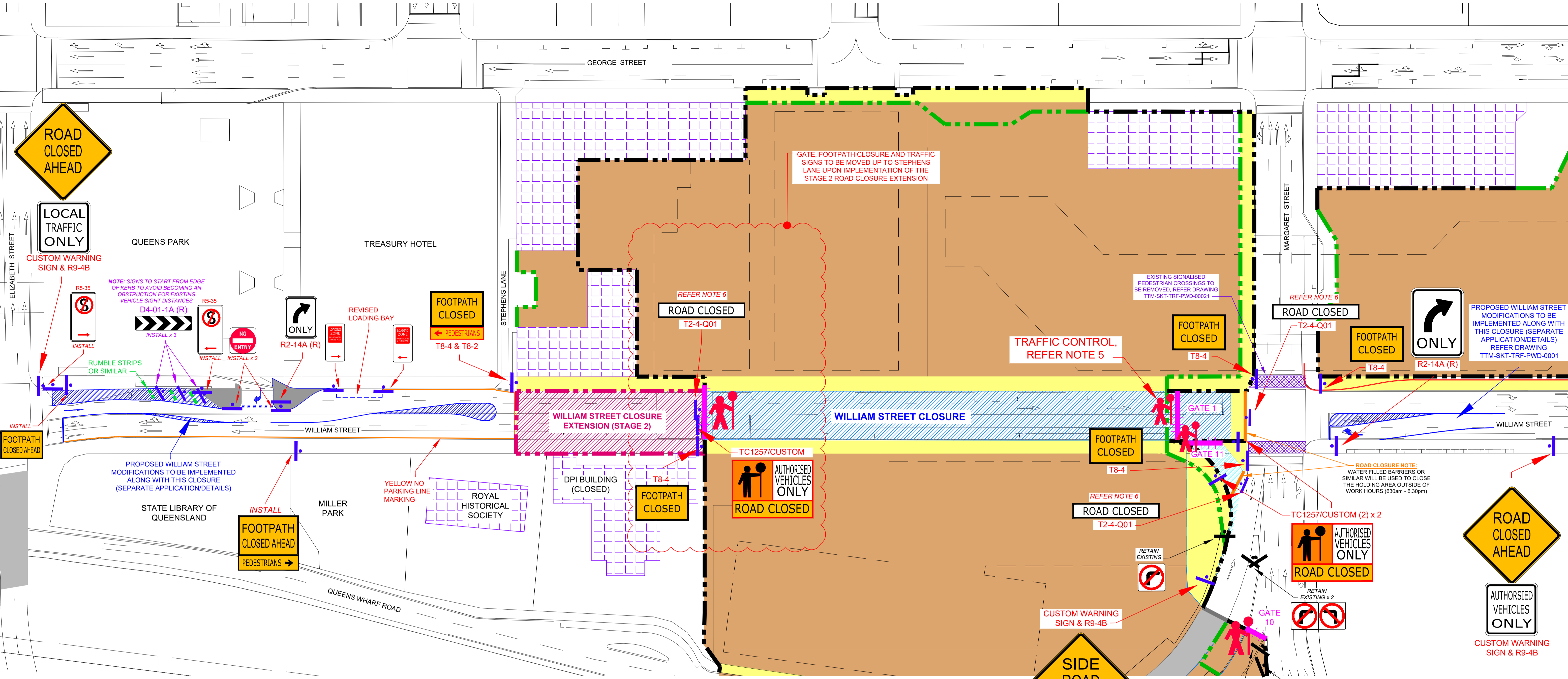


WILLIAM STREET CLOSURE

ISSUED FOR APPROVAL



TRAFFIC MANAGEMENT DETAILS

LOCATION: WILLIAM STREET
BRISBANE QLD 4000

TYPE: LONG TERM - ROAD CLOSURE:
Two way undivided dual carriageway road (low speed)

POSTED SPEED LIMIT: 40 km/h

MUTCD REF: CUSTOM CLOSURE

PRINCIPAL CONSULTANT
ILONA BLACKBURN RPEQ 16879
APPROVED 13 DECEMBER 2016

NOTES

- CONTACT THE AUTHOR, TTM ON 07 3327 9500 FOR FURTHER QUERIES.
- IMPLEMENTATION OF THIS PLAN IS THE RESPONSIBILITY OF THE PRIMARY CONTRACTOR.
- LONG TERM ROAD CLOSURE TO APPLY 24 HOURS/DAY.
- QUEENS WHARF ROAD CLOSURE TO COINCIDE WITH THIS ROAD CLOSURE. REFER DRAWING TTM-DRW-TRF-PWD-00031 FOR DETAILS.
- TRAFFIC CONTROLLERS TO MANAGE CLOSURE POINTS AND ENTERING/EXITING CONSTRUCTION VEHICLE ACCESS DURING CONSTRUCTION HOURS.
- CONSTRUCTION VEHICLE ACCESS POINTS TO BE CLOSED AFTER HOURS WITH A LARGE GATE OR SIMILAR TO BE SIGNED 'ROAD CLOSED'.
- ADDITIONAL 'ROAMING' TRAFFIC CONTROLLER CAN BE UTILISED ON SITE TO PROVIDE ADDITIONAL ASSISTANCE WHEN NEEDED, UP TO THE DISCRETION OF THE ON SITE MANAGER.
- MOST SIGNS TO BE INSTALLED IN A PERMANENT MANNER, ANY TEMPORARY SIGNS TO BE REMOVED OR COVERED AFTER HOURS.
- NO WORKS THAT REPRESENT A HAZARD TO VEHICULAR OR PEDESTRIAN MOVEMENT ARE TO OCCUR PRIOR TO THE ERECTION OF SIGNAGE OR CONTROL DEVICES DETAILED IN THIS PLAN. NO RELATED SIGNAGE OR CONTROL DEVICES ARE TO REMAIN ERECTED AFTER FINALISATION OF THE PROJECT.
- WHERE TEMPORARY TRAFFIC SIGNS CANNOT BE SAFELY ACCOMMODATED IN THE DESIRED LOCATION EG. 10 - 50M FROM WORK ZONE, THEY MAYBE PLACED IN THE MOST SAFE AND PRACTICABLE LOCATION AVAILABLE.
- SITE ACCESS WILL BE MODIFIED AT VARIOUS STAGES OF CONSTRUCTION, HOWEVER NO MODIFICATION WILL BE UNDERTAKEN WITHOUT CONSULTATION WITH THE TRAFFIC AND TRANSPORT WORKING GROUP.

DRAWING REFERENCE

- REFER TO DRAWING TTM-DRW-TRF-PWD-00101 & 00102 FOR EXISTING SIGN MODIFICATIONS
- REFER TO DRAWING TTM-DRW-TRF-PWD-00032 FOR SITE WIDE TRAFFIC MANAGEMENT APPROACH SIGNS

LEGEND

- INDICATIVE DEMOLITION EXTENTS
- PROPOSED SITE FENCE/BOUNDARY
- TEMPORARY FENCING
- HERITAGE BUILDING
- ROAD CLOSURE
- FOOTPATH CLOSURE
- TRAFFIC CONTROL
- SITE ACCESS (GATE)
- TRAFFIC SIGN

PRE WORKS NOTE:

FOR ROAD CLOSURE TRAFFIC MANAGEMENT SETUP DETAILS REFER TO PLAN TTM-DRW-TRF-PWD-00033

STAGING NOTE

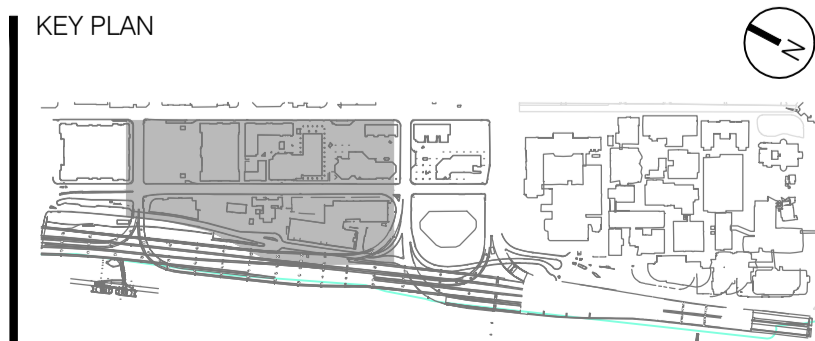
THE INITIAL WILLIAM STREET CLOSURE WILL BE STAGE 1 AS SHOW. THE EXTENSION OF THE CLOSURE (STAGE 2) ACROSS THE DPI AND TREASURY HOTEL FRONTAGES WILL BE INTRODUCED LATER IN THE PROJECT LIFECYCLE WHEN NECESSARY (DATES TO BE DETERMINED).

PLANS AND DOCUMENTS referred to in the PDA DEVELOPMENT APPROVAL

Approval no: DEV2016/816
Date: 19 DEC 2016



CONSULTANT
TTM CONSULTING PTY LTD
ABN 55 010 868 623
LEVEL 1, 128 GILGAN ROAD, WOOLLOONGABBA, QLD, 4102
P.O. BOX 1316, COORPAROO BC, QLD, 4115
T: (07) 3327 9500 F: (07) 3327 9501
E: ttm@ttmgroup.com.au W: www.ttmgroup.com.au



LEGEND
REFER TO LEGEND SHOWN ABOVE IN DRAWING.

NOTES
REFER TO NOTES SHOWN ABOVE IN DRAWING.

CLIENT
DESTINATION BRISBANE CONSORTIUM

REV	DESCRIPTION	DWN	CHK	DATE
E	CHANGES AS PER BCC FEEDBACK, ISSUED FOR APPROVAL	BW	IB	13.12.16
D	MINOR CHANGES, ISSUED FOR APPROVAL	BW	IB	21.11.16
C	WILLIAM STREET CLOSURE AREA STAGED	BW	BC	09.11.16
B	MINOR CHANGES, ISSUED FOR APPROVAL	BW	BC	06.10.16
A	ORIGINAL ISSUE	BW	BC	05.09.16

PROJECT
QUEENS WHARF BRISBANE

DRAWING TITLE
TRAFFIC GUIDANCE SCHEME
WILLIAM STREET ROAD CLOSURE

ISSUED: DECEMBER 13, 2016
FOR APPROVAL

PROJECT NO. 15BRT0531

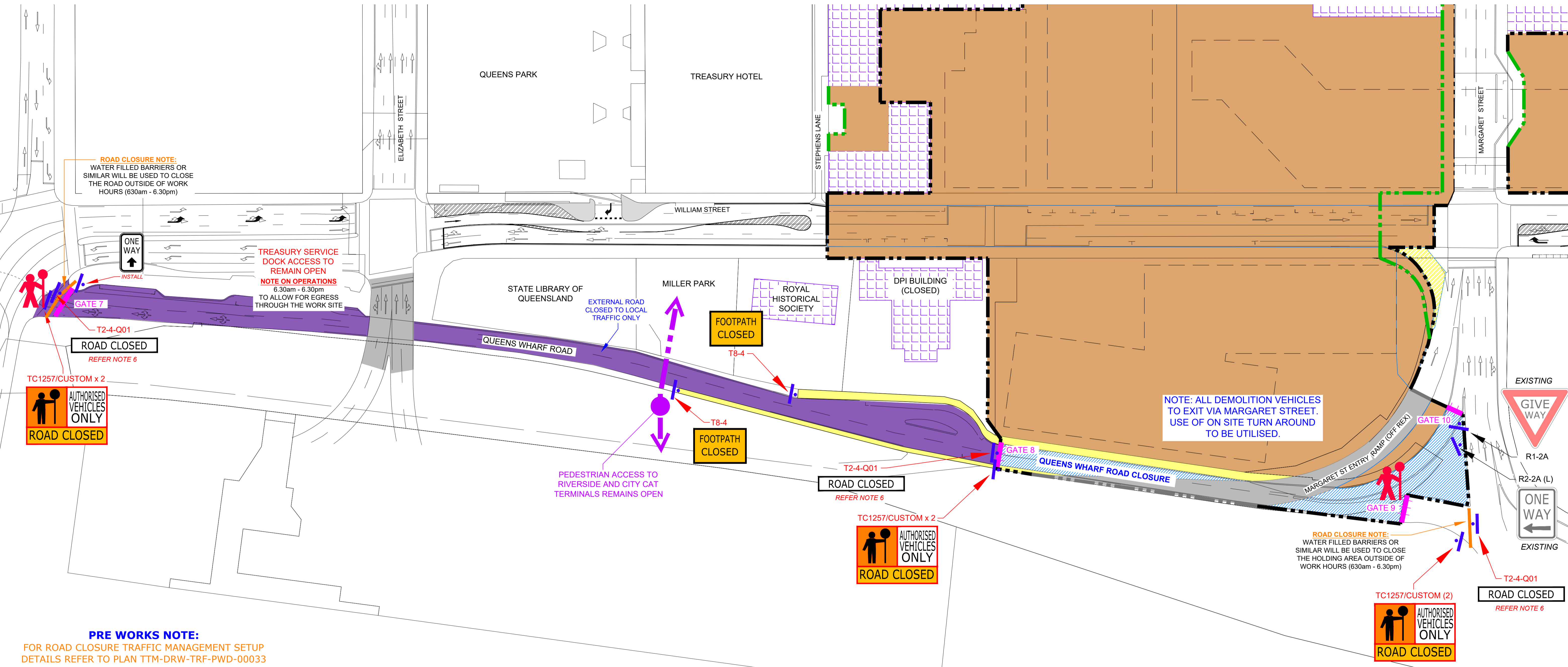
SCALE 1:500 @ A1 1:1000 @ A3

DRAWING NO. TTM-DRW-TRF-PWD-00030

REVISION E

QUEENS WHARF ROAD CLOSURE

ISSUED FOR APPROVAL



PRE WORKS NOTE:
FOR ROAD CLOSURE TRAFFIC MANAGEMENT SETUP
DETAILS REFER TO PLAN TTM-DRW-TRF-PWD-00033

TRAFFIC MANAGEMENT DETAILS

LOCATION: QUEENS WHARF ROAD
BRISBANE QLD 4000

TYPE: LONG TERM - ROAD CLOSURE:
Two way undivided single carriageway road (low speed)

POSTED SPEED LIMIT: 40 km/h

MUTCD REF: CUSTOM CLOSURE

ILONA BLACKBURN
PRINCIPAL CONSULTANT
ILONA BLACKBURN RPEQ 16879
APPROVED 13 DECEMBER 2016

- NOTES**
- CONTACT THE AUTHOR, TTM ON 07 3327 9500 FOR FURTHER QUERIES.
 - IMPLEMENTATION OF THIS PLAN IS THE RESPONSIBILITY OF THE PRIMARY CONTRACTOR.
 - LONG TERM ROAD CLOSURE TO APPLY 24 HOURS/DAY.
 - WILLIAM STREET ROAD CLOSURE TO COINCIDE WITH THIS ROAD CLOSURE. REFER DRAWING TTM-DRW-TRF-PWD-00030 FOR DETAILS.
 - TRAFFIC CONTROLLERS TO MANAGE CLOSURE POINTS AND ENTERING/EXITING CONSTRUCTION VEHICLE ACCESS DURING CONSTRUCTION HOURS.
 - CONSTRUCTION VEHICLE ACCESS POINTS TO BE CLOSED AFTER HOURS WITH A LARGE GATE OR SIMILAR TO BE SIGNED 'ROAD CLOSED'.
 - ADDITIONAL 'ROAMING' TRAFFIC CONTROLLER CAN BE UTILISED ON SITE TO PROVIDE ADDITIONAL ASSISTANCE WHEN NEEDED, UP TO THE DISCRETION OF THE ON SITE MANAGER.
 - MOST SIGNS TO BE INSTALLED IN A PERMANENT MANNER, ANY TEMPORARY SIGNS TO BE REMOVED OR COVERED AFTER HOURS.
 - NO WORKS THAT REPRESENT A HAZARD TO VEHICULAR OR PEDESTRIAN MOVEMENT ARE TO OCCUR PRIOR TO THE ERECTION OF SIGNAGE OR CONTROL DEVICES DETAILED IN THIS PLAN. NO RELATED SIGNAGE OR CONTROL DEVICES ARE TO REMAIN ERECTED AFTER FINALISATION OF THE PROJECT.
 - WHERE TEMPORARY TRAFFIC SIGNS CANNOT BE SAFETY ACCOMMODATED IN THE DESIRED LOCATION EG. 10 - 50M FROM WORK ZONE, THEY MAYBE PLACED IN THE MOST SAFE AND PRACTICABLE LOCATION AVAILABLE.
 - SITE ACCESS WILL BE MODIFIED AT VARIOUS STAGES OF CONSTRUCTION, HOWEVER NO MODIFICATION WILL BE UNDERTAKEN WITHOUT CONSULTATION WITH THE TRAFFIC AND TRANSPORT WORKING GROUP.

DRAWING REFERENCE

- * REFER TO DRAWING TTM-DRW-TRF-PWD-00101 & 00102 FOR EXISTING SIGN MODIFICATIONS
- * REFER TO DRAWING TTM-DRW-TRF-PWD-00032 FOR SITE WIDE TRAFFIC MANAGEMENT APPROACH SIGNS

LEGEND

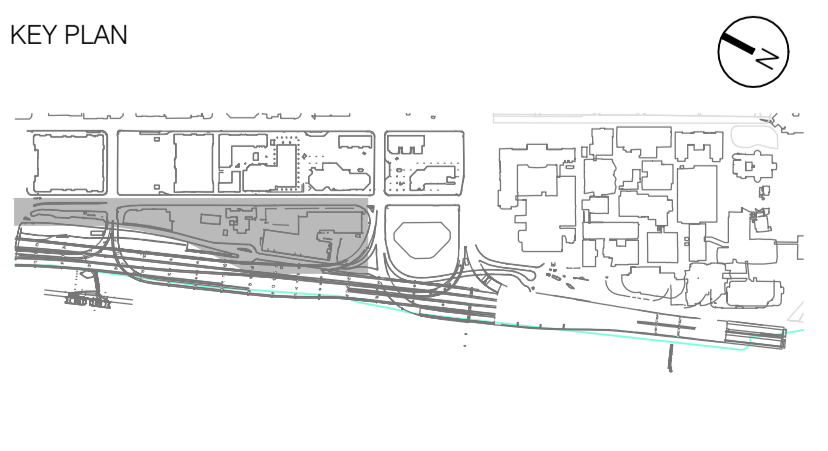
- INDICATIVE DEMOLITION EXTENTS
- PROPOSED SITE FENCE/BOUNDARY
- TEMPORARY FENCING
- HERITAGE BUILDING
- ROAD CLOSURE (INTERNAL, WITHIN SITE BOUNDARY)
- ROAD CLOSURE (EXTERNAL, OUTSIDE SITE BOUNDARY)
- FOOTPATH CLOSURE
- TRAFFIC CONTROL
- SITE ACCESS (GATE)
- TRAFFIC SIGN

PLANS AND DOCUMENTS referred to in the PDA DEVELOPMENT APPROVAL

Approval no: DEV2016/816
Date: 19 DEC 2016

CONSULTANT

TTM CONSULTING PTY LTD
ABN 55 010 868 621
LEVEL 1, 128 GILGAN ROAD, WOOLLOONGABBA, QLD, 4102
P.O. BOX 1316, COOMERABOO BC, QLD, 4151
T: (07) 3327 9500 F: (07) 3327 9501
E: ttm@ttmgroup.com.au W: www.ttmgroup.com.au



LEGEND
REFER TO LEGEND SHOWN ABOVE IN DRAWING.

NOTES
REFER TO NOTES SHOWN ABOVE IN DRAWING.

CLIENT

DESTINATION BRISBANE CONSORTIUM

REV	DESCRIPTION	DWN	CHK	DATE
D	CHANGES AS PER BCC FEEDBACK, ISSUED FOR APPROVAL	BW	IB	13.12.16
C	MINOR CHANGES, ISSUED FOR APPROVAL	BW	IB	21.11.16
B	MINOR CHANGES, ISSUED FOR APPROVAL	BW	BC	06.10.16
A	ORIGINAL ISSUE	BW	BC	05.09.16

PROJECT
QUEENS WHARF BRISBANE

DRAWING TITLE
**TRAFFIC GUIDANCE SCHEME
QUEENS WHARF ROAD - ROAD CLOSURE**

ISSUED: DECEMBER 13, 2016
FOR APPROVAL

SCALE
NOT TO SCALE

DRAWING NO.
TTM-DRW-TRF-PWD-00031

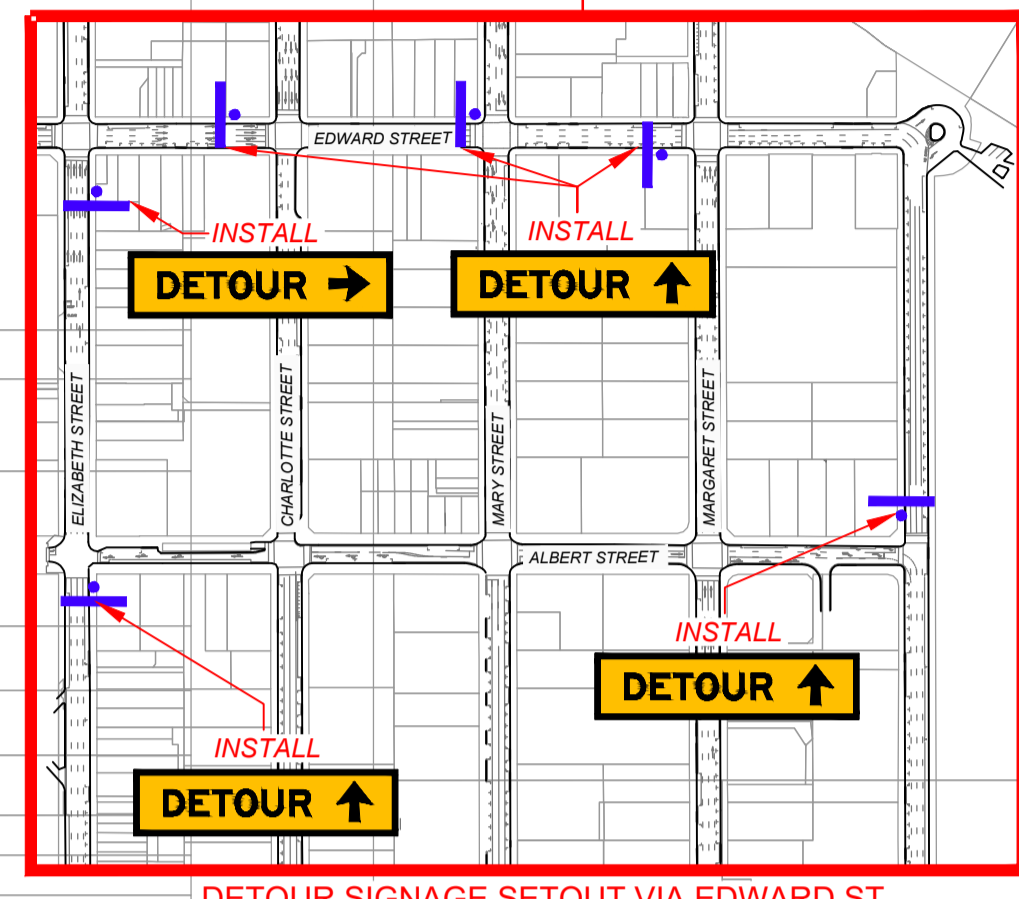
PROJECT NO.
15BRT0531

REVISION
D

Copyright by TTM Consulting Pty Ltd. This drawing, or parts thereof, may not be reproduced for any purpose without the consent of TTM Consulting Pty Ltd. It is implied and has legal backing.
The drawings are to be read in conjunction with the specification and any other written instructions issued. Any discrepancies shall be referred to the Superintendent for a written decision prior to ordering supply/ installation/ construction.

ROAD CLOSURE APPROACH SIGNS (WILLIAM ST & QUEENS WHARF RD)

ISSUED FOR APPROVAL



DETOUR SIGNAGE SETOUT VIA EDWARD ST

PLANS AND DOCUMENTS referred to in the PDA DEVELOPMENT APPROVAL

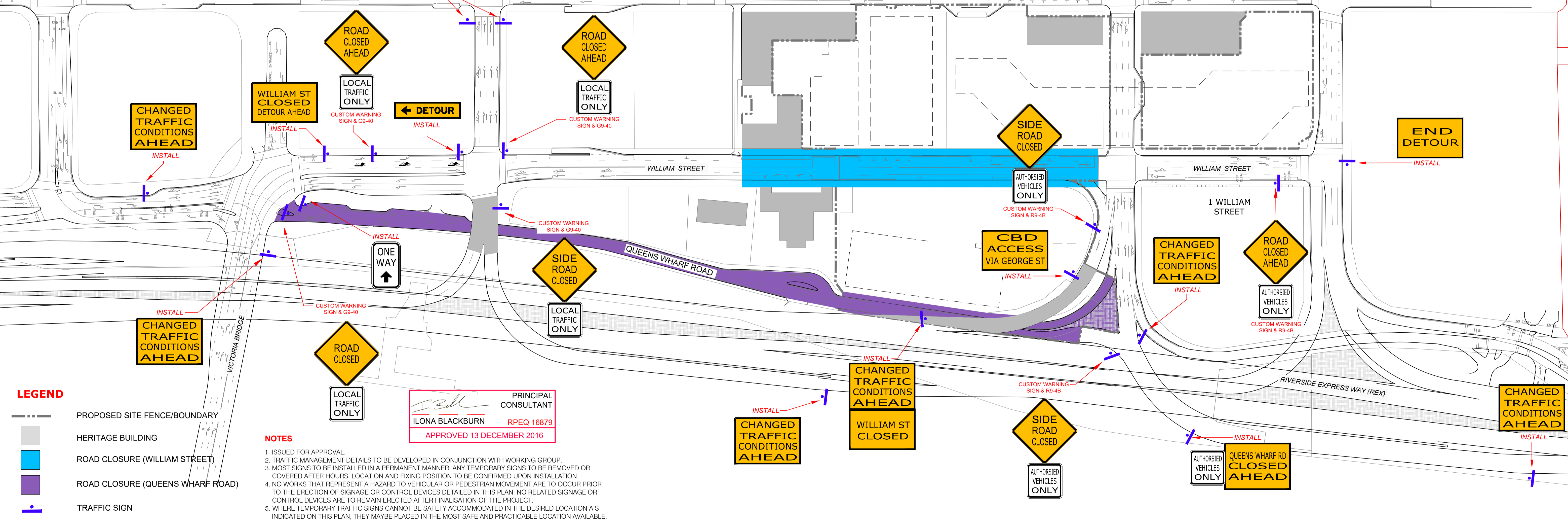
Approval no: DEV2016/816

Date: 19 DEC 2016



INSTALL x 2
CHANGED TRAFFIC CONDITIONS AHEAD

INSTALL x 2
CBD ACCESS VIA GEORGE ST



- LEGEND**
- PROPOSED SITE FENCE/BOUNDARY
 - HERITAGE BUILDING
 - ROAD CLOSURE (WILLIAM STREET)
 - ROAD CLOSURE (QUEENS WHARF ROAD)
 - TRAFFIC SIGN

- NOTES**
1. ISSUED FOR APPROVAL.
 2. TRAFFIC MANAGEMENT DETAILS TO BE DEVELOPED IN CONJUNCTION WITH WORKING GROUP.
 3. MOST SIGNS TO BE INSTALLED IN A PERMANENT MANNER. ANY TEMPORARY SIGNS TO BE REMOVED OR COVERED AFTER HOURS. LOCATION AND FIXING POSITION TO BE CONFIRMED UPON INSTALLATION.
 4. NO WORKS THAT REPRESENT A HAZARD TO VEHICULAR OR PEDESTRIAN MOVEMENT ARE TO OCCUR PRIOR TO THE ERECTION OF SIGNAGE OR CONTROL DEVICES DETAILED IN THIS PLAN. NO RELATED SIGNAGE OR CONTROL DEVICES ARE TO REMAIN ERECTED AFTER FINALISATION OF THE PROJECT.
 5. WHERE TEMPORARY TRAFFIC SIGNS CANNOT BE SAFELY ACCOMMODATED IN THE DESIRED LOCATION A S INDICATED ON THIS PLAN, THEY MAYBE PLACED IN THE MOST SAFE AND PRACTICABLE LOCATION AVAILABLE.

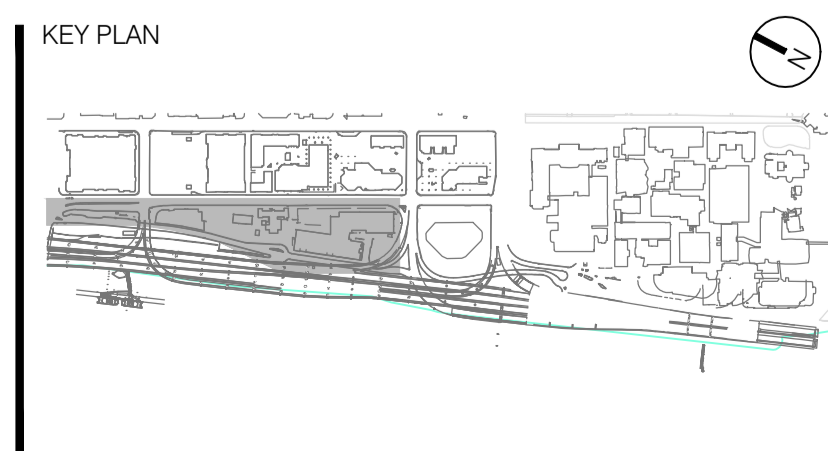
PRINCIPAL CONSULTANT
ILONA BLACKBURN RPEQ 16879
APPROVED 13 DECEMBER 2016

CONSULTANT

TTM CONSULTING PTY LTD

ABN 55 010 868 623
LEVEL 1, 128 LUGAN ROAD, WOOLLOONGABBA, QLD, 4102
P.O. BOX 1316, COORPAROO BC, QLD, 4151

T: (07) 3327 9500 F: (07) 3327 9501
E: ttm@ttmgroup.com.au W: www.ttmgroup.com.au



LEGEND

REFER TO LEGEND SHOWN ABOVE IN DRAWING.

NOTES

REFER TO NOTES SHOWN ABOVE IN DRAWING.

CLIENT

DESTINATION BRISBANE CONSORTIUM

REV	DESCRIPTION	DATE
B	CHANGES AS PER BCC FEEDBACK, ISSUED FOR APPROVAL	13.12.16
A	ORIGINAL ISSUE	21.11.16
REV		

PROJECT

QUEENS WHARF BRISBANE

DRAWING TITLE

**TRAFFIC GUIDANCE SCHEME
ROAD CLOSURE APPROACH SIGNS**

ISSUED: DECEMBER 13, 2016 FOR APPROVAL

PROJECT NO. 15BRT0531

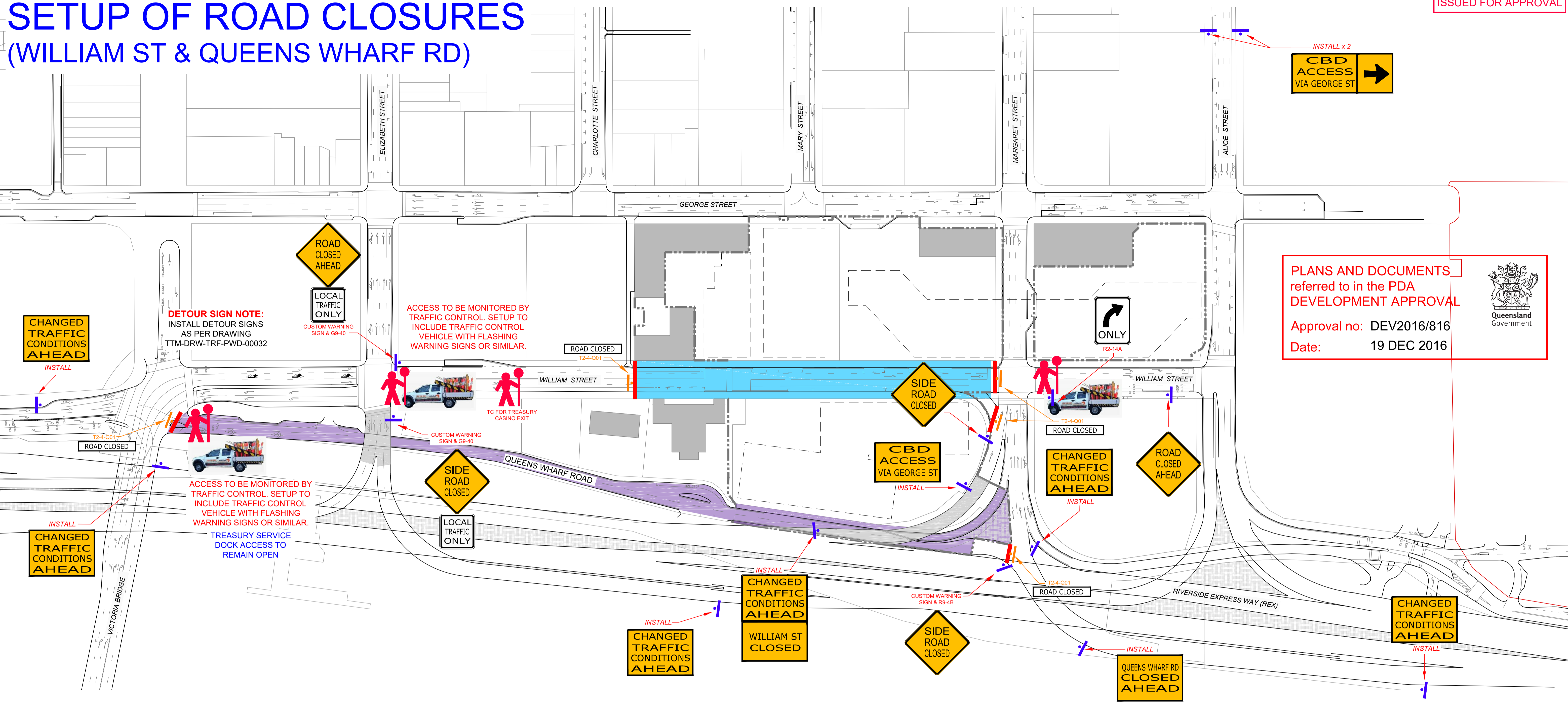
SCALE 1:1000 @ A1 1:2000 @ A3

DRAWING NO. **TTM-DRW-TRF-PWD-00032**

REVISION **B**


Copyright by TTM Consulting Pty Ltd. This drawing, or parts thereof, may not be reproduced for any purpose without the consent of TTM Consulting Pty Ltd. It is implied and has legal backing.
The drawings are to be read in conjunction with the specification and any other written instructions issued. Any discrepancies shall be referred to the Superintendent for a written decision prior to ordering supply. Installation construction.

SETUP OF ROAD CLOSURES (WILLIAM ST & QUEENS WHARF RD)



PLANS AND DOCUMENTS referred to in the PDA DEVELOPMENT APPROVAL

Approval no: DEV2016/816
Date: 19 DEC 2016



CHANGED TRAFFIC CONDITIONS AHEAD
INSTALL

CHANGED TRAFFIC CONDITIONS AHEAD
INSTALL

CHANGED TRAFFIC CONDITIONS AHEAD
INSTALL


- LEGEND**
-  PROPOSED SITE FENCE/BOUNDARY
 -  HERITAGE BUILDING
 -  ROAD CLOSURE (WILLIAM STREET)
 -  ROAD CLOSURE (QUEENS WHARF ROAD)
 -  WATER FILLED BARRIERS OR SIMILAR
 -  TRAFFIC CONTROL
 -  TRAFFIC SIGN

TABLE 1: SCHEDULE OF ALL TRAFFIC MANAGEMENT WORKS

DATE	TRAFFIC MANAGEMENT ACTIVITIES
DECEMBER 26th - DECEMBER 31st 2016	<ul style="list-style-type: none"> • SIGNAGE SHOWN ON THIS PLAN TO BE INSTALLED AND LEFT COVERED • WATER FILLED BARRIERS SHOWN AT ROAD CLOSURE LOCATIONS TO BE LOADED ONTO THE ADJACENT FOOTPATHS
JANUARY 1st 2017	<ul style="list-style-type: none"> • TRAFFIC SIGNS UNCOVERED • WATER FILLED BARRIERS PLACED ACROSS ROADWAY • TRAFFIC CONTROLLERS AT ACCESS POINTS ON WILLIAM STREET AND QUEENS WHARF ROAD TO CONTROL LOCAL TRAFFIC
JANUARY 3rd - JANUARY 14th 2017	<ul style="list-style-type: none"> • REFER TO PLAN TTM-DRW-PWS-034 FOR DETAILS
JANUARY 22nd 2017 - 2022	<ul style="list-style-type: none"> • REFER TO PLAN FINAL TMP AND ASSOCIATED PLANS

- NOTES**
1. ISSUED FOR APPROVAL.
 2. TRAFFIC MANAGEMENT DETAILS TO BE DEVELOPED IN CONJUNCTION WITH WORKING GROUP.
 3. THIS PLAN DOES NOT TAKE INTO CONSIDERATION ANY TRAFFIC SIGNS OR DEVICES LOCATED WITHIN THE DESIGNATED ROAD CLOSURE AREAS.
 4. THIS PLAN ONLY INDICATES THE ROAD CLOSURE SET UP SIGNAGE REQUIREMENTS. ADDITIONAL TRAFFIC MANAGEMENT SIGNS SUCH AS TRUCK AND ROAD WORK WARNING SIGNS ARE TO BE INSTALLED UPON COMMENCEMENT OF CONSTRUCTION ACTIVITY.
 5. MOST SIGNS TO BE INSTALLED IN A PERMANENT MANNER. ANY TEMPORARY SIGNS TO BE REMOVED OR COVERED AFTER HOURS. LOCATION AND FIXING POSITION TO BE CONFIRMED UPON INSTALLATION.
 6. NO WORKS THAT REPRESENT A HAZARD TO VEHICULAR OR PEDESTRIAN MOVEMENT ARE TO OCCUR PRIOR TO THE ERECTION OF SIGNAGE OR CONTROL DEVICES DETAILED IN THIS PLAN. NO RELATED SIGNAGE OR CONTROL DEVICES ARE TO REMAIN ERECTED AFTER FINALISATION OF THE PROJECT.
 7. WHERE TEMPORARY TRAFFIC SIGNS CANNOT BE SAFELY ACCOMMODATED IN THE DESIRED LOCATION EG. 10 - 50M FROM WORK ZONE, THEY MAYBE PLACED IN THE MOST SAFE AND PRACTICABLE LOCATION AVAILABLE.

ROAD CLOSED SIGN NOTE:

T2-4-Q01
ROAD CLOSED

ROAD CLOSURE SIGNS TO BE TEMPORARILY INSTALLED ON WATER FILLED BARRIERS AT ROAD CLOSURE POINTS. THESE SIGNS WILL THEN BE RELOCATED ON SITE GATES ONCE INSTALLATION OF HOARDING AND GATES HAS BEEN FINALISED.

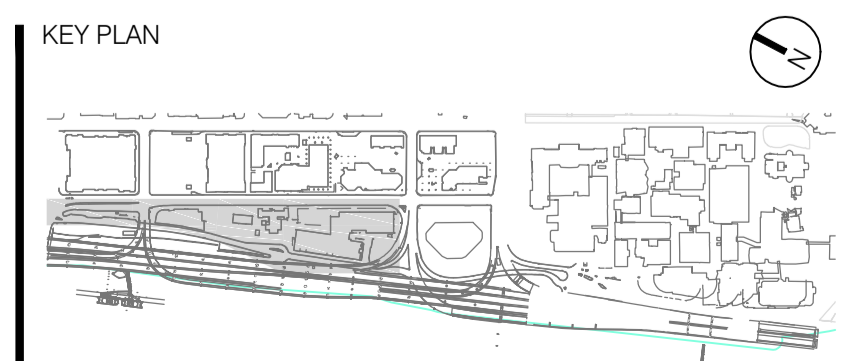
WATER FILLED BARRIER NOTE:

BARRIERS TO BE INSTALLED AT INTERSECTION POINTS OR AS SHOWN IN THIS PLAN. THESE TEMPORARY BARRIERS WILL BE REMOVED ONCE THE SITE HOARDING AND GATES ARE INTERNALLY PUT INTO PLACE.

WATER FILLED BARRIER SYSTEMS TO COMPLY WITH THE TMR DOCUMENT 'ROAD SAFETY BARRIER SYSTEMS & END TREATMENTS' WHICH IS COMPLIANT WITH AS3845:1999. BARRIER SYSTEM TO BE USED IN THIS APPLICATION IS THE TRITON TL1 CRASH BARRIER COMPLIANT TO SHIELD WORKSITES FOR SPEEDS UP TO 70km/h.


ILONA BLACKBURN
PRINCIPAL CONSULTANT
RPEQ 16879
APPROVED 13 DECEMBER 2016

CONSULTANT
TTM CONSULTING PTY LTD
ABN 55 010 868 623
LEVEL 1, 128 GOSMAN ROAD, WOOLLOONGABBA, QLD, 4102
P.O. BOX 1310, COORPAROO BC, QLD, 4151
T: (07) 3327 9500 F: (07) 3327 9501
E: ttm@ttmgroup.com.au W: www.ttmgroup.com.au

LEGEND
REFER TO LEGEND SHOWN ABOVE IN DRAWING.

NOTES
REFER TO NOTES SHOWN ABOVE IN DRAWING.

CLIENT
 DESTINATION BRISBANE CONSORTIUM

REV	DESCRIPTION	BW	BC	17.11.16	DATE
A	ORIGINAL ISSUE				

PROJECT
QUEENS WHARF BRISBANE

DRAWING TITLE
**TRAFFIC GUIDANCE SCHEME
SETUP OF LONG TERM ROAD CLOSURES**

ISSUED: NOVEMBER 17, 2016
FOR APPROVAL

PROJECT NO.
15BRT0531

SCALE
1:1000 @ A1 1:2000 @ A3

DRAWING NO.
TTM-DRW-TRF-PWD-00033

REVISION
A

Copyright by TTM Consulting Pty Ltd. This drawing, or parts thereof, may not be reproduced for any purpose without the consent of TTM Consulting Pty Ltd. It is implied and has legal backing.
The drawings are to be read in conjunction with the specification and any other written instructions issued. Any discrepancies shall be referred to the Superintendent for a written decision prior to ordering supply/ installation/ construction.