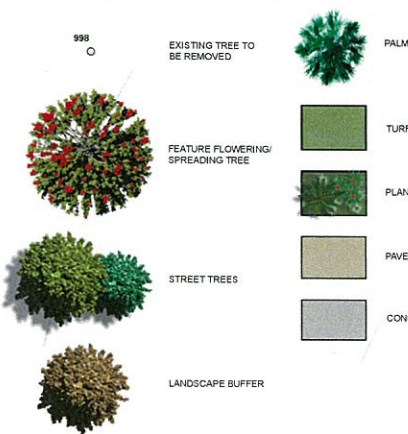


LEGEND



EXISTING TREES

Tree No.	DBH	Height	Spread	Type
280	MULTI	8.0	10.0	TREE
281	0.4	8.0	8.0	TREE
282	MULTI	8.0	10.0	TREE
283	0.25	8.0	6.0	PALM
284	0.25	8.0	6.0	PALM
285	0.25	8.0	6.0	PALM
286	0.25	8.0	6.0	PALM
287	0.25	8.0	6.0	PALM
288	0.25	8.0	6.0	PALM
305	0.3	8.0	6.0	TREE
306	0.3	8.0	6.0	TREE
307	0.3	8.0	6.0	TREE
308	0.5	8.0	10.0	TREE
309	0.3	8.0	6.0	TREE
310	0.3	8.0	6.0	TREE
500	0.05	2.0	1.0	TREE
501	0.3	5.0	3.0	TREE
502	0.05	1.5	0.5	TREE
562	MULTI	8	8	TREE
609	1.0	15.0	15.0	TREE
610	MULTI	15.0	6.0	PALM
611	0.8	15.0	10.0	TREE
612	1.0	15.0	10.0	TREE
613	0.3	8.0	3.0	PALM
614	0.25	8.0	3.0	TREE
615	0.4	8.0	5.0	TREE
616	0.3	5.0	6.0	TREE
617	0.4	6.0	3.0	PALM
618	0.3	6.0	3.0	PALM
619	0.3	6.0	3.0	PALM
620	0.3	6.0	3.0	PALM
676	0.3	6.0	4.0	TREE
677	MULTI	6.0	6.0	PALM
678	0.3	6.0	3.0	PALM
679	0.3	6.0	3.0	PALM
680	0.3	6.0	3.0	PALM
681	0.3	6.0	3.0	PALM
682	MULTI	4.0	3.0	PALM
683	MULTI	5.0	3.0	PALM
684	MULTI	5.0	3.0	PALM
744	0.3	6.0	3.0	PALM
891	0.3	4.0	3.0	TREE
892	0.3	8.0	4.0	PALM
893	0.3	8.0	4.0	PALM
894	0.3	8.0	4.0	PALM
895	0.3	8.0	4.0	PALM
896	0.3	8.0	4.0	PALM
897	0.3	8.0	4.0	PALM
898	0.3	8.0	4.0	PALM
899	0.3	8.0	4.0	PALM
900	0.4	8.0	4.0	PALM
901	0.3	8.0	4.0	PALM
902	0.3	8.0	4.0	PALM
956	1.4	10.0	10.0	TREE
957	0.5	6.0	8.0	TREE
988	0.3	8.0	4.0	PALM
989	MULTI	8.0	6.0	PALM
990	MULTI	6.0	6.0	TREE
991	0.3	4.0	5.0	TREE
992	0.35	8.0	4.0	PALM
993	0.35	8.0	4.0	PALM
994	0.3	8.0	4.0	PALM
995	0.3	8.0	4.0	PALM
996	0.3	8.0	4.0	PALM
997	0.3	8.0	4.0	PALM
998	0.3	8.0	4.0	PALM
999	0.3	8.0	4.0	PALM
1000	0.3	8.0	4.0	PALM
1022	0.25	6.0	3.0	PALM
1023	0.25	6.0	3.0	PALM
1024	0.25	6.0	3.0	PALM
1025	MULTI	5.0	4.0	TREE

LINE OF BASEMENT BELOW SHOWN DASHED

PEDESTRIAN ENTRY FROM STREET

CLIMBING PLANTS TO TRELLIS AND PERGOLA OVER

NEW LANDSCAPE BUFFER TO ROAD BOUNDARY CONSISTING OF TREES AND LOW UNDERSTORY PLANTING IN FORMAL LAYOUT TO PROVIDE APPROPRIATE CONTEXT TO HISTORICAL BUILDING

FORMAL GARDEN SURROUNDING HERITAGE HOUSE

FEATURE SPREADING TREE TO BUILDING FORECOURT PLANTED IN DEEP GROUND (EXTENT INDICATED BY RED LINE)

PEDESTRIAN ENTRY FROM STREET

PEDESTRIAN ENTRY FROM STREET

TALL COLUMNAR TREE AND ORNAMENTAL UNDERSTORY PLANTING TO MARK PEDESTRIAN ENTRY

CLIMBING PLANTS TO TRELLIS AND PERGOLA OVER

STREETSCAPE IN ACCORDANCE WITH COUNCIL STREETSCAPE GUIDELINES - SUBTROPICAL BOULEVARD (OUT OF CENTRE) TO INCLUDE:

- MIX OF TREE SPECIES LAID OUT IN AN INFORMAL MANNER WITH CLUSTERS OF TREES AT 2-6m CENTRES.
- TURF TO ROAD VERGE.
- 1.8m WIDE FOOTPATH.



Australian Institute of Landscape Architects

FOR APPROVAL

citicene
your project | our priority

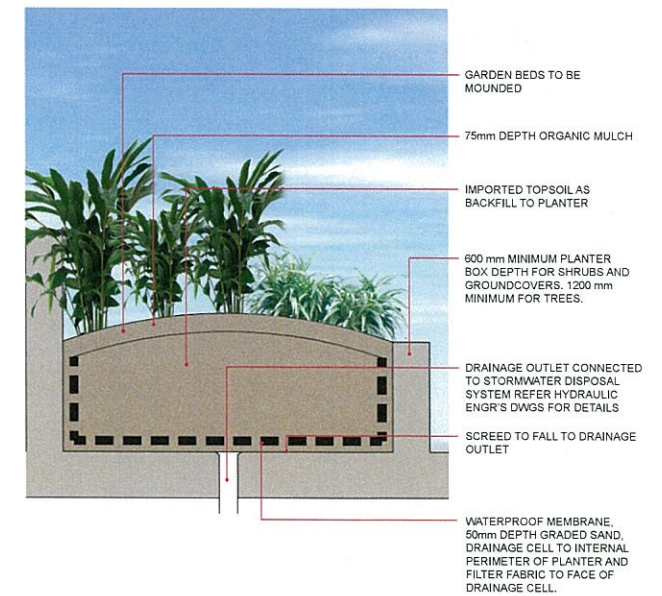
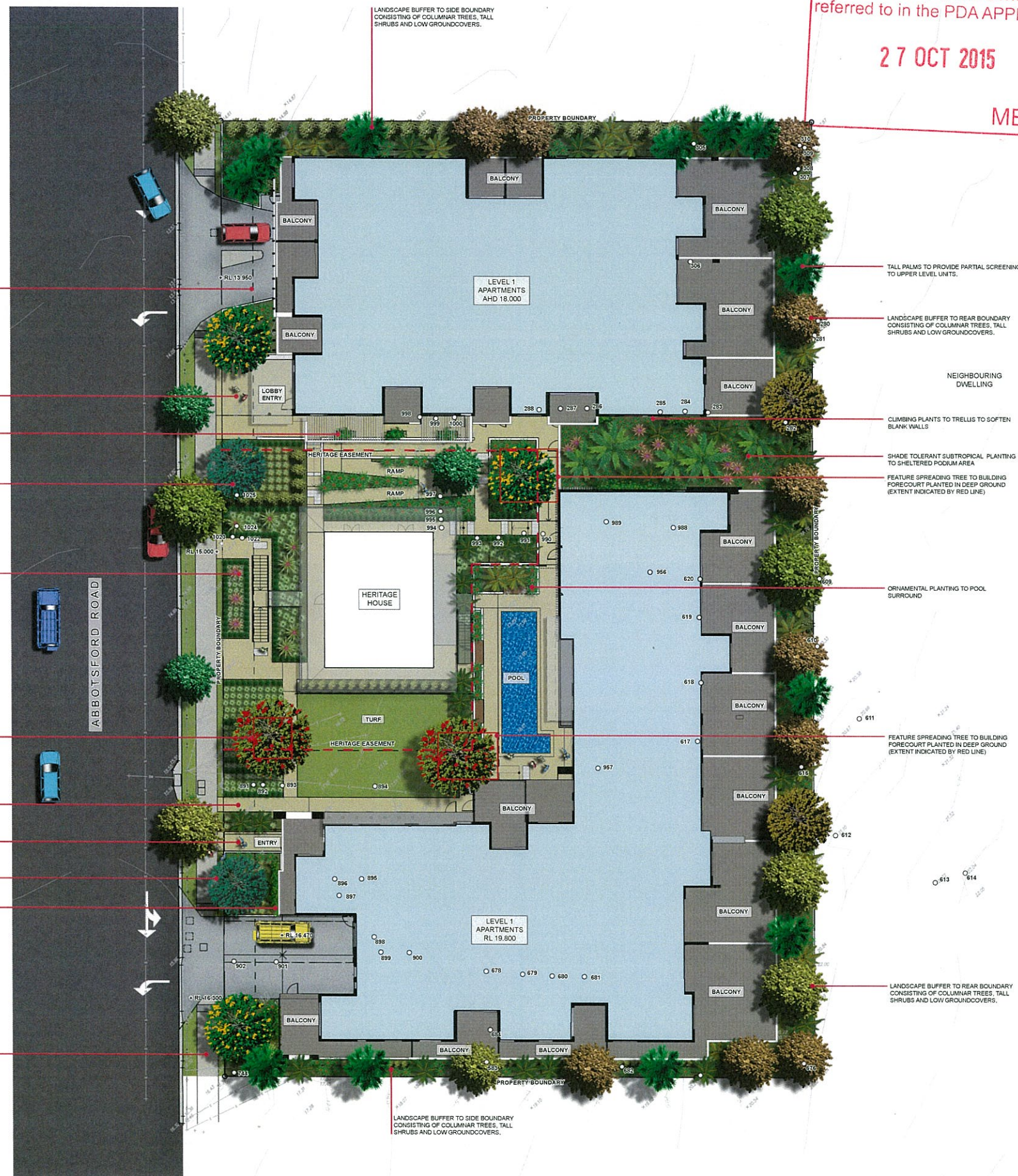
LANDSCAPE CONCEPT PLAN

Mixed Use Development
23 - 39 Abbotsford Road, Bowen Hills, Queensland, 4001

PLANS AND DOCUMENTS referred to in the PDA APPROVAL

27 OCT 2015

MEDQ



SECTION A TYPICAL PODIUM PLANTER

VERTICAL LANDSCAPES



DATE: 02.12.2014
APPROVED: DR
DRAWN: RC

citicene
office: 07 3161 6420
email: mail@citicene.com.au
web: citicene.com.au



40-744-SD002 B

Copyright: ©
JULY 2015
SCALE: 1:200 @ A1