

PLANS AND DOCUMENTS  
referred to in the PDA APPROVAL  
26 MAR 2015  
MEDQ

AMENDED IN RED  
26 MAR 2015  
By: BRIANNA FYFFE (name)  
MEDQ



# CAMPBELL ST HOTEL

## landscape design intent

PLACE  
DESIGN GROUP 





## INTRODUCTION

As part of a collaborative design team, PLACE Design Group have explored the Urban Design and Landscape Architectural elements for Campbell St Hotel- a 20 Storey short term accommodation tower in Bowen Hills, Qld. In accordance with the Bowen Hills Urban Development Area Development Scheme and Brisbane City Council guidelines, the proposed landscape and urban design elements within this intent document are focussed on providing superior design outcomes, that reinforce those of the buildings overall construction based philosophies and ESD initiatives.

### NOTES

The landscape and urban design has taken into account the following codes and guidelines:

- Bowen Hills Urban Development Area - Development Scheme
- BCC City Plan 2014
- BCC Streetscape Design Manual
- Crime Prevention through Environmental Design - Guidelines for Queensland



## CONTEXT

### Site Description

The site is situated within the Bowen Hills Urban Development Area (UDA), on the corner of Campbell and Wren St's, at the bottom of a small hill. Its eastern boundary is defined by the Inner City Bypass (ICB), along which a public bikeway provides a ground level connection to O'Connell Terrace to the south of the site.

Currently the site houses a mechanical workshop and has been levelled to accommodate the use. The northern interface along Campbell St is relatively level however, from the Campbell Street frontage the site and adjacent eastern bikeway slope uphill along Wren Street to the southern boundary of the site.

The site is positioned within walking distance to the Royal Brisbane Hospital, and in close proximity to public transport facilities that allow quick and easy access to the CBD and surrounding suburbs.

Some new development has occurred locally with the site being to the lower side of future RNA development along O'Connell Terrace. As part of the Bowen Hills UDA, it is understood that most of the surrounding areas will be developed into the future.



LOCATION AND CONTEXT PLAN

## CONTEXT

### OPPORTUNITIES AND CONSTRAINTS

#### SITE TOPOGRAPHY - OPPORTUNITIES AND LIMITATIONS

The topography of the site and the current use, mean that the Wren St interface having limited street presence, and little activation. The existing bikeway location along the rear of the existing buildings, combined with steep grades, large trees and limited surveillance give an impression of perceived hazard.

#### PROJECT OPPORTUNITY

The even grade of Campbell St frontage gives the safest vehicular access point for the development. The potential activation of this frontage for commercial opportunities is obvious. In contrast the relatively steep grade on the Wren Street frontage offers more interesting opportunities for activation. Linkages into the site from Wren Street will be elevated relative to the Campbell Street frontage and provide a more interesting street outlook and connection. This sense of separation also allows differing uses to be incorporated into the development.

#### ACCESS, CONNECTIVITY AND ACTIVATION (VISUAL AND PHYSICAL)

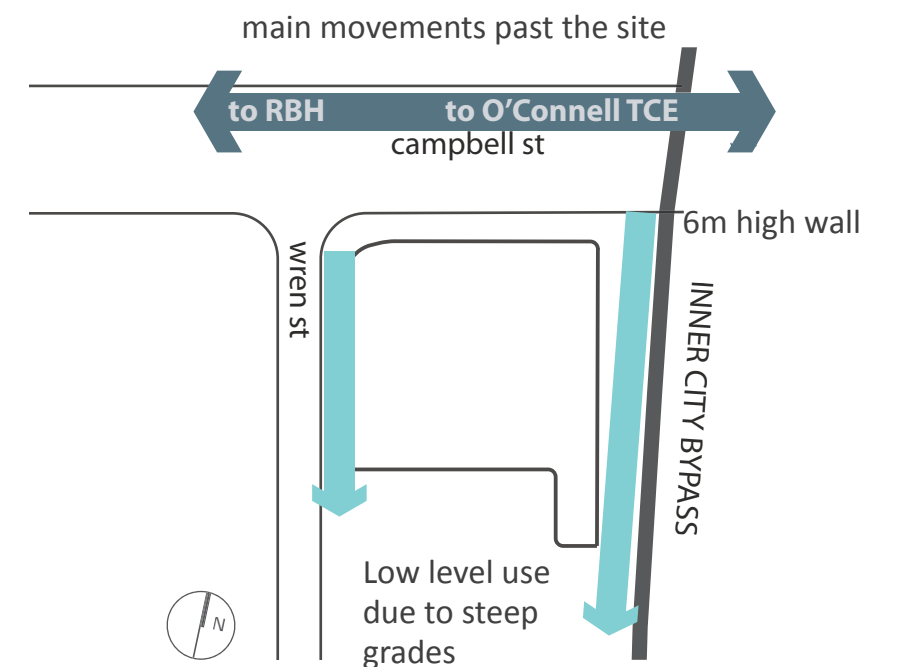
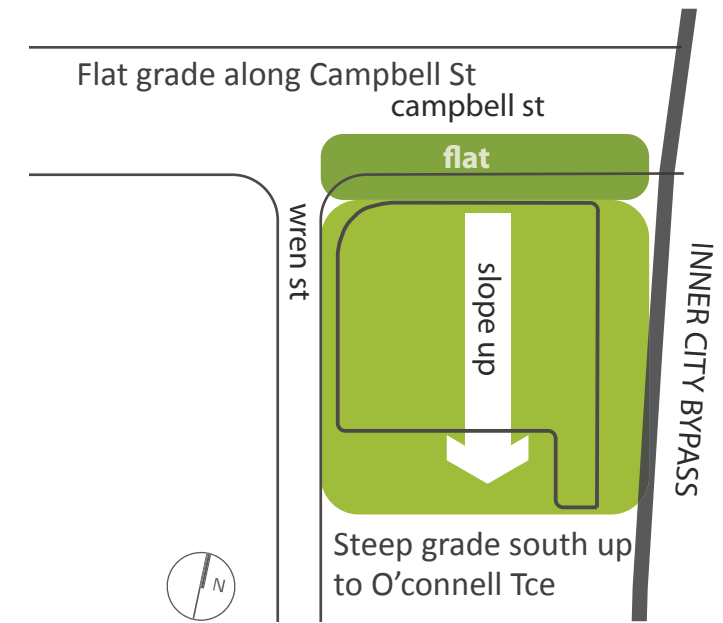
The current site activity has made limited use of street access on both frontages however the nature of the present use results in no connectivity to the east. The existing bikeway to the east is steep and rarely used. The steep grade of Wren St is also discouraging to pedestrians, while the major pathway along Campbell St is on the opposite side of the road.

#### PROJECT OPPORTUNITY

Greater connectivity makes places more accessible providing increased connectivity. Connectivity means a high number of movement and access connections between places. Only places which are highly accessible to people can offer them maximum choices.

Through the redevelopment of this site to provide commercial activity at both street levels increased opportunities are available for connectivity. Promoting the ground level along Campbell Street as a useable public space and providing passive recreation opportunities the space will be more energised.

The incorporation of street awnings in conjunction with the sculptural building facade will enhance visual interest and stimulate intrigue and exploration. Addressing the retaining wall, and the current visual barrier of the ICB will further promote these ideas and encourage more frequent use of the existing bikeway infrastructure.



## CONTEXT OPPORTUNITIES AND CONSTRAINTS

### CLIMATIC EXPOSURE

The current site use, the ICB and large fig trees to the east present this one storey building with limited or no morning sun. Presently very exposed and even brutal frontages along Campbell and Wren Streets discourage activation and provide little attraction for pedestrian interest.

### PROJECT OPPORTUNITY

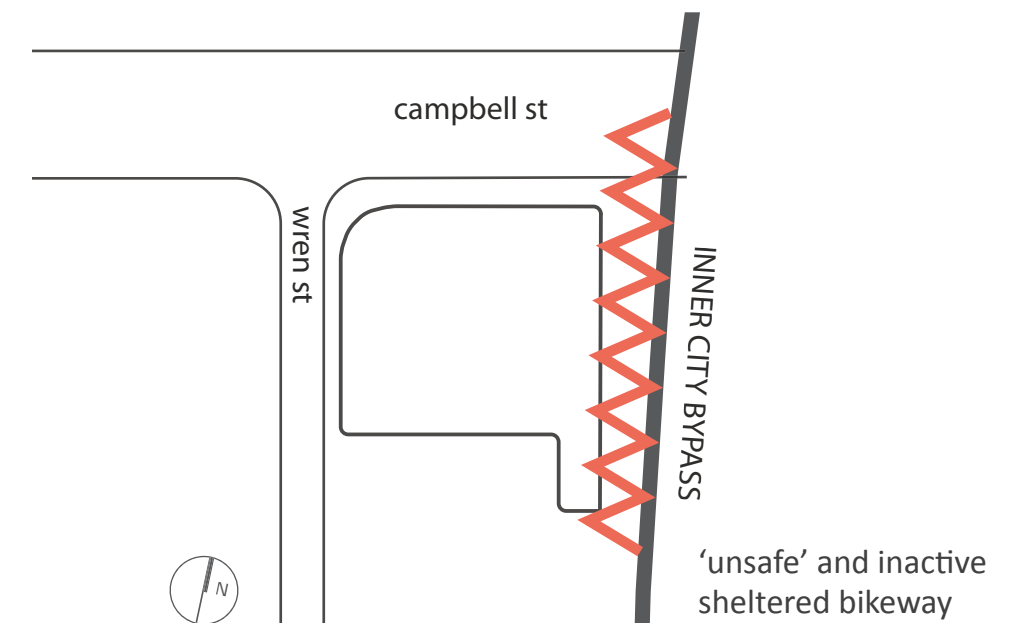
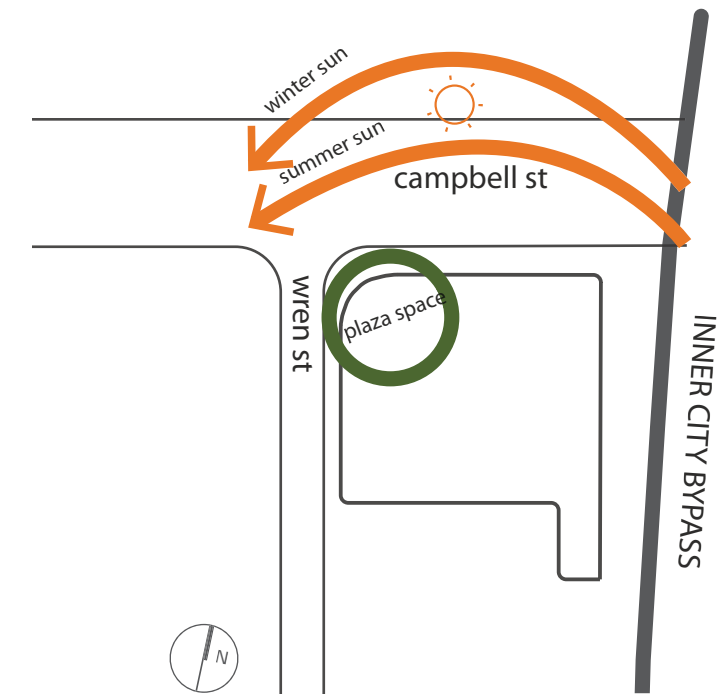
The corner of Wren and Campbell St is North facing and should be used to optimise solar access with planting and building awning combining to provide climatic refuge as required. Embracing the eastern, western and northern facades by providing pedestrian connections and sheltered, human scaled environments, the orientation of the site can be used to it's maximum potential.

### SAFETY AND SURVEILLANCE

Currently the site is a bit of a dead end. The current use, the visual dominance of the overhead ICB bridge and dense vegetation along the bikeway do not promote it as an activated and safe environment. The dominance of the bridge footings and blank walls to the street, and lack of light due to large existing trees make it appear unsafe.

### PROJECT OPPORTUNITY

Designing a building for the site to promote active use and constant surveillance will increase the activity within and through the site. Realigning the bikeway and having outlook from the building over this area will assist in presenting it as more a desirable public space and will help lift the perceived safety of the area.





## LANDSCAPE DESIGN PHILOSOPHY

The ultimate goal of all urban landscape design is to create a 'good urban place'. A place in which the users feel comfortable and present. A space that provides a break from the everyday and an opportunity to reflect.

The design for this site must not only be localised to the site but sensitive to its role within the broader Bowen Hills and Brisbane area. The nature of the building dictates that the landscape design shall promote recuperation, rest and relaxation. It will become a bookend for the surrounding medical precinct on ground level to the west, and a gateway to the city, on ICB level to the east.

The landscape design will deliver

- Defined public space and community enhancement through greater connectivity, access, comprehensibility, human scale and richness
- Opportunities for street activation
- Safety through surveillance
- Places for private respite and healing
- Design with a climatic response
- Contribute to the urban ecology
- Environmental sensitivity and sustainability

The proposed landscape and urban design outcomes have been driven by the following principles, ideals and philosophies:

- Urban ecology and greenspace
- Environmental sensitivity and sustainability
- Healing value of a garden
- Variety and legibility
- Community enhancement scale and richness
- Safety and quality of edges and interfaces





## LANDSCAPE THEMING IMAGERY

## URBAN ECOLOGY AND GREENSPACE

The greenspace within the city is an integral part of the urban fabric. It needs to be a continuous medium rather than a local or site related plantscape enhancement. As the urban heat island effect comes under further recognition, it should be a core value of all urban buildings to add to the urban greenspace footprint by maximising opportunities to provide these spaces.

### PROJECT OPPORTUNITY

Green walls, roofs and ceilings in association with the built elements have been incorporated, with planting opportunities across all floor levels and some vertical surfaces. The promotion of the 'Urban Jungle' to the north and east of the site also provides more support, exploring initiatives of soil management, water filtration and micro climatic cooling.

## ENVIRONMENTAL SENSITIVITY AND SUSTAINABILITY

A good urban place is sensitive to the environment and the setting, be it natural or man made. This sensitivity needs to be considered at the local as well as global scale. By creating spaces that are climatically favourable to the end users and complement the surrounding environment, the importance of these principles are appreciated by the users. Very often sustainability is thought of largely only in terms of energy and greenhouse gasses. Urban sustainability encompasses not only energy but also economic, social, cultural and ecological terms.

### PROJECT OPPORTUNITY

The landscape design will reflect the Environmentally Sustainable Design (ESD) principles that drive the building design. Recycled water, passive cooling and heating, soil cells to maximise plant growth and stormwater runoff treatments for educational purposes will all be employed where possible within the design. The main value of the project will be it's contribution to greening the urban environment and its contribution to help counter the urban heat island phenomenon.

## HEALING VALUE OF A GARDEN

The idea that nature has a soothing, restorative effect is nothing new, and the therapeutic benefits of gardens is an increasingly and heavily researched phenomenon. The basic premise of healing garden design relates to the issue of stress and relaxation, as the relief of stress helps to bolster the immune system and stimulate the body's natural healing.

### PROJECT OPPORTUNITY

The buildings proximity to the Royal Brisbane Hospital makes this a vital element to the design. The incorporation of an 'Urban Jungle' in the external spaces of the ground level atrium will provide opportunities for rest, relaxation and contemplation for both hotel visitors, commercial patrons and the public. The extension of the 'Urban Jungle' into the bikeway corridor provides an additional layer to the 'Jungle'.

The use of healing pods, publically accessible to hotel visitors throughout the upper levels of the building will provide separate, more solitary opportunities for either individuals or small family groups.



living walls as sculptural elements



microclimatically appropriate planting to encourage biodiversity



urban rain gardens as educational tools

## VARIETY AND LEGIBILITY

Variety is an essential ingredient of good places, however the space must also be legible. We can take full advantage of a place only if we understand it, interpret it and it has meaning for use. We must feel comfortable there. Its layout must be such that we can construct clear mental maps of it. Locating clear reference points, landmarks, and spaces scaled for their use all contribute to this.

### PROJECT OPPORTUNITY

A holistic design approach incorporating legibility and variety will allow this goal to be achieved. The 'Urban Jungle' to the north and east facades will reduce the scale of the built form giving a more human scale. This planting will also marry the bike path easement into this space and provide activation and variation of use along this boundary as well as reducing the scale of the ICB structure adjacent.

Users of the commercial space fronting Wren Street will be more elevated so their experience will be closer to the canopy of trees and palms. This will result in a more intimate scale of the spaces here.

The open nature of the Campbell and Wren Street frontages provides opportunity for activity and interaction. Paths and seating opportunities through the space give variety to the interactions available within it.

## SAFETY AND QUALITY OF EDGES AND INTERFACES

How well a public space works will be largely determined by the arrangement of, and around, its edges. A dynamic and interesting space is likely to have active edges that convey the feeling of safety and security whilst using the space

### PROJECT OPPORTUNITY

The design of all areas ensures that the physical layouts comply with all Australian Standards and relevant Acts, such as ramp gradients, fall heights and slip resistance.

CPTED initiatives are applied to the spaces, however simply through activation and passive surveillance the area will be perceived as safer. Glass walls, balustrades and doors on ground level as well as upper levels balcony spaces in conjunction with trees positioning allows sight lines to be maintained for passive surveillance. Quality of lighting will be to relevant standards to ensure visibility at night.

## COMMUNITY ENHANCEMENT, SCALE AND RICHNESS

A good urban place is one which enhances the sense of the community, social interaction and strengthens the self-image and identity of the people who use it. While acknowledging differences, it will focus on the shared and the common. The evidence and use of the human dimensions helps us to relate to, interpret and appreciate the built environment. A good urban place affirms the centrality of human beings.

### PROJECT OPPORTUNITY

By promoting the ground floor space as an inviting area of public access, the development will be more welcoming and increase its social value. The development of the 'urban jungle' on the Campbell Street frontage and its visual link with the bikeway to the east further enhancing the activity of the site.



modular gardens to fill the vertical face of the built form and act as respite spaces



structural soils under pavements to promote full growth of the urban jungle



## LANDSCAPE AND URBAN DESIGN OUTCOMES

The interaction of ground floor activation with the need for areas of quiet reflection, solitude and healing, will create a unique outcome for the development. The social, ecological and environmental importance of such a space to the wider city collective are considerable. The development presents a versatile urban destination accepting of current need and aware of future vision.

A multi faceted public place with a 4 storey high subtropical 'Urban jungle', an urban interpretation of a subtropical rainforest, are the face of the development on the ground level. This bold design reinforces the need for generous and well thought out garden spaces and urban REST STOPS within the human scale. Balcony spaces and sublevel healing pods are offered as spaces throughout the remaining floors for personal contemplation and healing or small group interactions. These gardens will provide vertical green spines running up and down the eastern and western facades of the built form.

As a whole unit, the landscape will present as an interactive sculptural mass, reflecting the shapes and styles of the building facades and architectural elements. An integrated design solution with green walls and roofs, art walls and planter walls, complemented by ground level planting and ground surface treatments, all combine to offer a strong development identity and unique experience for users.

The importance and social value of such buildings to accommodate the growing need for support of hospital outpatients within such proximity to the Royal Brisbane Hospital is apparent and considered as a key driver of the development.

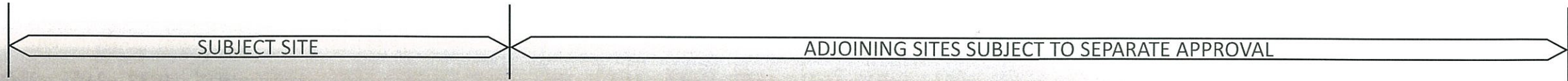
The Campbell St Hotel will provide a bookend to the medical precinct and greater amenity to Campbell and Wren Streets. The north facing 'Urban Jungle' courtyard will provide opportunities for street activation and safety through passive surveillance, particularly to the adjacent bikeway. Designed as a sensitive response to the local environment, the collective ESD principles of the building will positively contribute to the urban ecology and ensure sustainable and viable options for the future.

Considering the site and its individual opportunities and constraints, the design outcomes of the landscape and urban design elements of the development are noted as follows:

- Streetscape and public realm
- Urban jungle
- Living walls, roofs, ceilings and facades
- Healing pods
- Innovation breeds activation
- Education develops understanding and implementation



AMENDED IN RED  
26 MAR 2015  
By: BRIANNA FYFFE (name)  
MEDQ



**EXTENDED SITE PLAN**





GREEN TO SOFTEN THE HARDSTAND ON GROUND LEVEL AND PROMOTE A PLEASANT ENTRANCE TO THE BUILDING



FORMED CONCRETE AND NATURAL TIMBER SEATING ELEMENTS FOR BOTH SCULPTURE AND FUNCTION



MODULAR PLANTERS EXTENDING UP THE FACADE OF THE BUILDING



MODULAR PLANTING SYSTEMS TO CREATE VERTICAL INTEREST



VARIATION IN PATTERN AND TEXTURE OF PAVEMENT TREATMENTS



LIGHTING AND SEATING TO PROMOTE SAFE AND PUBLIC USE OF DEVELOPMENT SPACES



CREEPERS AND TRELLISES TO GROW INTO GREEN WALLS



SOFTEN THE BUILDING EDGES WITH PLANTING

## CHARACTER IMAGERY

## STREETSCAPE AND PUBLIC REALM

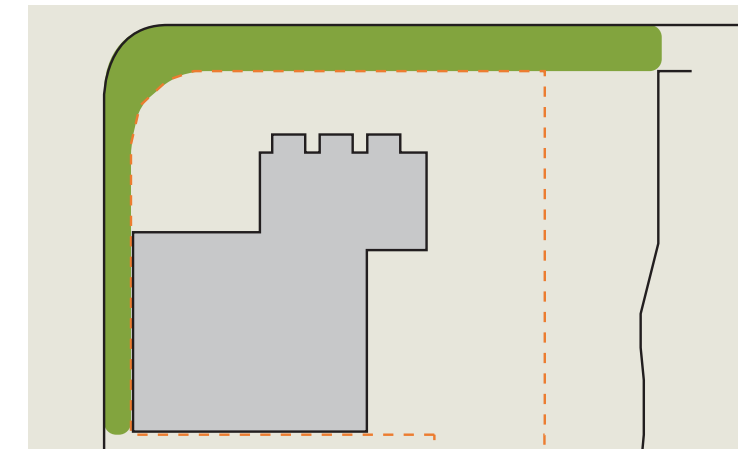
### PROJECT OPPORTUNITY

A key design outcome for the development is that hotel guests, commercial patrons and the general public to develop a perceived ownership of the ground level facilities. The 'Urban Jungle' provides a perceived extension of the streetscape within the ground floor lobby space. This open atrium will be accessible to all. Public users will be provided opportunity for interaction and relaxation with the space via linkage pathways and a variety of seating opportunities through the space. Users of the commercial space have elevated experience of the 'Urban Jungle', the floor level in this area being higher and thus closer to the canopy of of the planting.

Both Campbell and Wren St's are classified as City Street Minor under BCC Streetscape Design Manual. The importance of this street type as a key pedestrian route linking destinations has been incorporated into the design by retaining a clear and legible thoroughfare.

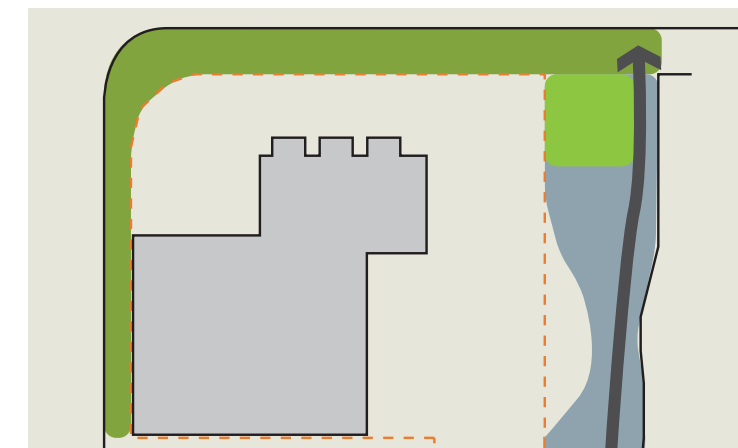
The bikeway connection from Cambell Street to O'Connell Street will be retained, however realigned to suit the new easement and building footprint. The reinstated path will follow similar gradients to the existing. It will be well lit and more open to allow for increased passive surveillance from the surrounding land uses.

Green Zone	% of Site Area
Streetscape	12%
Bikeway	17.5%
'Urban Jungle'	16.5%
Total	46%



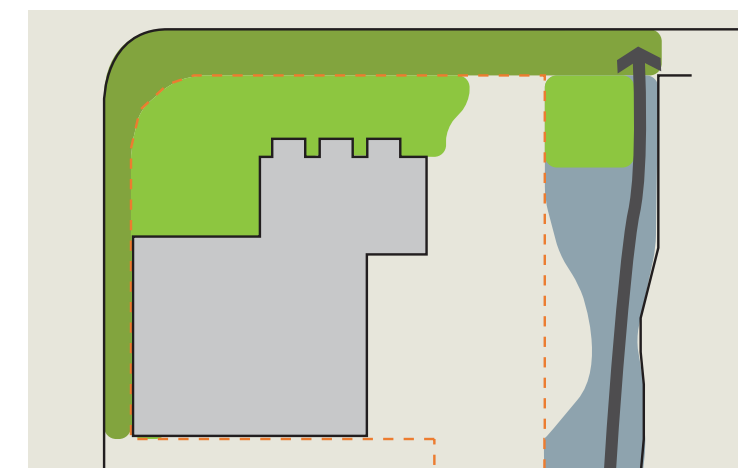
**12% OF TOTAL SITE AREA**

**STREETSCAPE**



**29.5% OF TOTAL SITE AREA**

**STREETSCAPE AND BIKEWAY**



**46% OF TOTAL SITE AREA**

**URBAN JUNGLE + BIKEWAY + STREETSCAPE**



### URBAN JUNGLE

At ground level the design deliberately amplifies on-ground pedestrian routes, movements and experiences. 'Urban Jungle' planting of high canopy palm and tree species will dominate the upper storey of the ground plane creating a living ceiling and enclosing the space. On ground level undulating garden beds and organic seating elements provide opportunities for interaction at a human scale.

The urban jungle creates a sculptural juxtaposition to the building form, providing a unique urban environment. Elements of the jungle will wrap and fold around the ceiling spaces and awning structures, balancing transparency and screening where required. Its height and generosity of floor area and undersurface soil treatments will ensure healthy, vibrant plant growth that will reflect and amplify the desired subtropical character of Brisbane.

### LIVING WALLS AND ROOFS

The use of traditionally under-utilised urban spaces is encouraged through the development. Although not a new ideal, the use of green walls, roofs and ceilings is developing throughout Australia as a major catalyst to increasing the general health and well being of urban environments. Greening the facades and roofs of the development will soften the built form, creating a development with an inherently strong identity delivering an abundance of urban landscape and vegetation, cleaner air, reduced noise and potential for habitat creation.

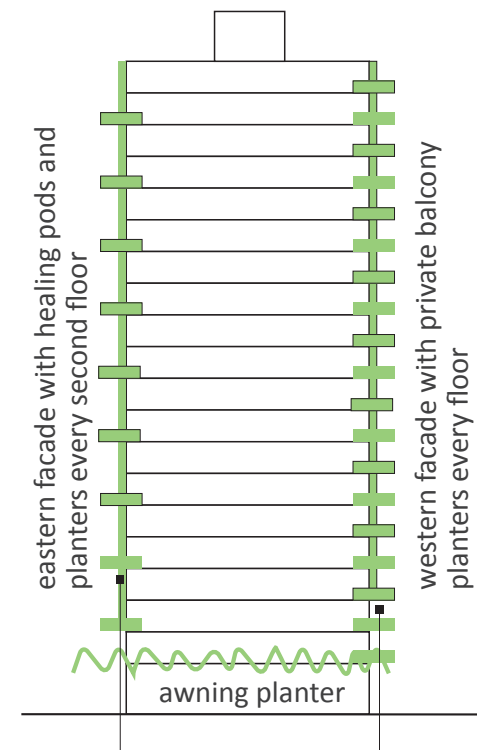
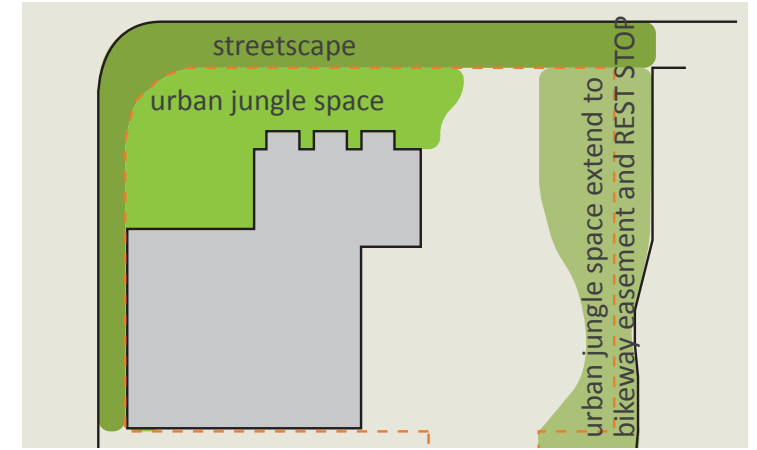
The roof over the lobby will allow for increased light levels through to the roof plane to the 'Urban Jungle'. Filtered light through the roof then the canopy will provide a more interesting street level experience for pedestrians rather than the usual sun or shade. Seasonal changes to the canopy will affect the feeling of the 'Urban Jungle' and how it is used throughout the year.

Modular planting areas and elevated trellises provide opportunities to extend the understorey up the face of the building. This in turn provides textural variety in the vertical plane and relief from the built form.

### HEALING PODS

Designed to promote individual or small group interactions, the healing pods read as sky gardens that climb the facades of the building. Their function is both aesthetic and therapeutic and will assist in promoting the building intentions as recuperation environment.

Pods will exist on the upper floors of the development from level 2 to the roof. These balcony spaces and sublevel healing pods are offered as spaces for personal contemplation and healing or small group interactions.



trellis planting to extend height of building

## INNOVATION BREEDS ACTIVATION

The ground floor spaces blur the lines of public and private ownership to encourage the maximum interaction and create a development with an inherently strong community identity. The space will be versatile and provide for both commercial and public uses.

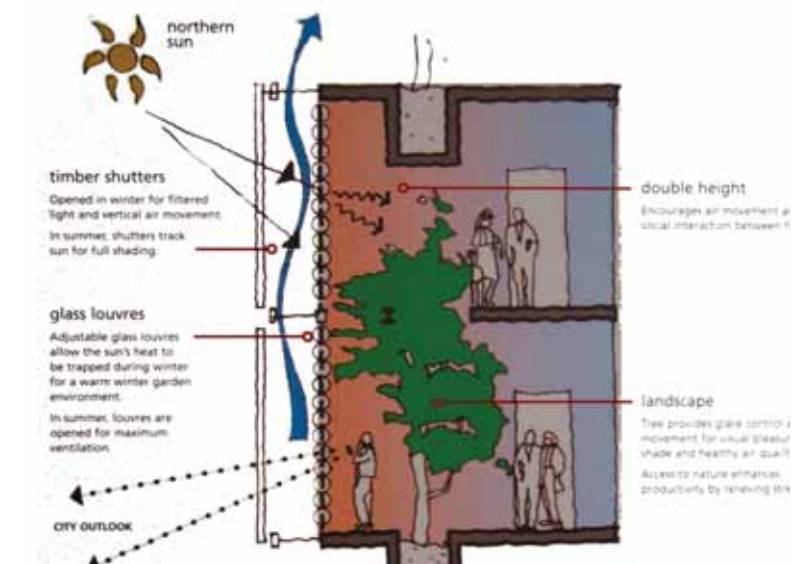
The public domain dominates the ground plane landscape, activated by dynamic edges, offering various visual and physical experiences. These edges, including the bikeway and commercial opportunities, will act as catalysts to draw people through and into the space.

The variation within the types of ground floor spaces (the urban jungle, the bikeway enhancement and commercial tenancy opportunities) manipulate the scale of the space. This manipulation provides highly legible spaces with plentiful interactive opportunities for both building occupants and local pedestrian traffic.

The high level of variation within the design offers experiences that encourages social interaction. The high levels of interaction modelled for the site will encourage social acceptance of the development as a singularly identifiable piece of the Bowen Hills UDA and the surrounding medical precinct alike.

## EDUCATION DEVELOPS UNDERSTANDING + IMPLEMENTATION

The sustainability initiatives incorporated into the site will be illustrated through innovative displays within the landscape of the 'Urban Jungle' and lobby area of the building. These educational diagrams and explanatory notes can be used to track the performance of the buildings operations over time and showcase the success of the development. The availability of this type of information will foster a greater understanding of the buildings goals and how it is actually sustainable. By providing simple information on how it creates its own energy, adds to health and well being of the street and city collective, how it recycles its own water, its microclimatic heating and cooling ideals and other ESD principles this gives a high level of public appreciation and acceptance of sustainability, and a tangible example of these initiatives in practice.



diagrammatic information signage



**STREET TREES:**  
Proposed street trees with understorey planting, in accordance with the BCC Streetscape Design Guidelines

modular green wall to existing ICB retaining wall  
potential position for public art or sculpture  
REST STOP space

*Bikeway subject to compliance assessment*

bike safety slow down device  
palm planting to match Urban Jungle

realign bikeway, grade consistently to meet existing and connect to

**AMENDED IN RED**  
**26 MAR 2015**  
By: BRIANNA PYFFE (name)  
MEDQ

minimum 1m wide garden bed and balustrade to top of driveway wall for cyclist safety

minimum 1m wide, low planting to ICB retaining wall

small tree/shrub planting to visually prompt cyclist to slow down

**GROUND FLOOR PLAN**



new corner truncation and pram ramp

low planting to boundary

on grade access point to tenancy

**INNER CITY BYPASS**

**NEIGHBOURING PROPERTY**

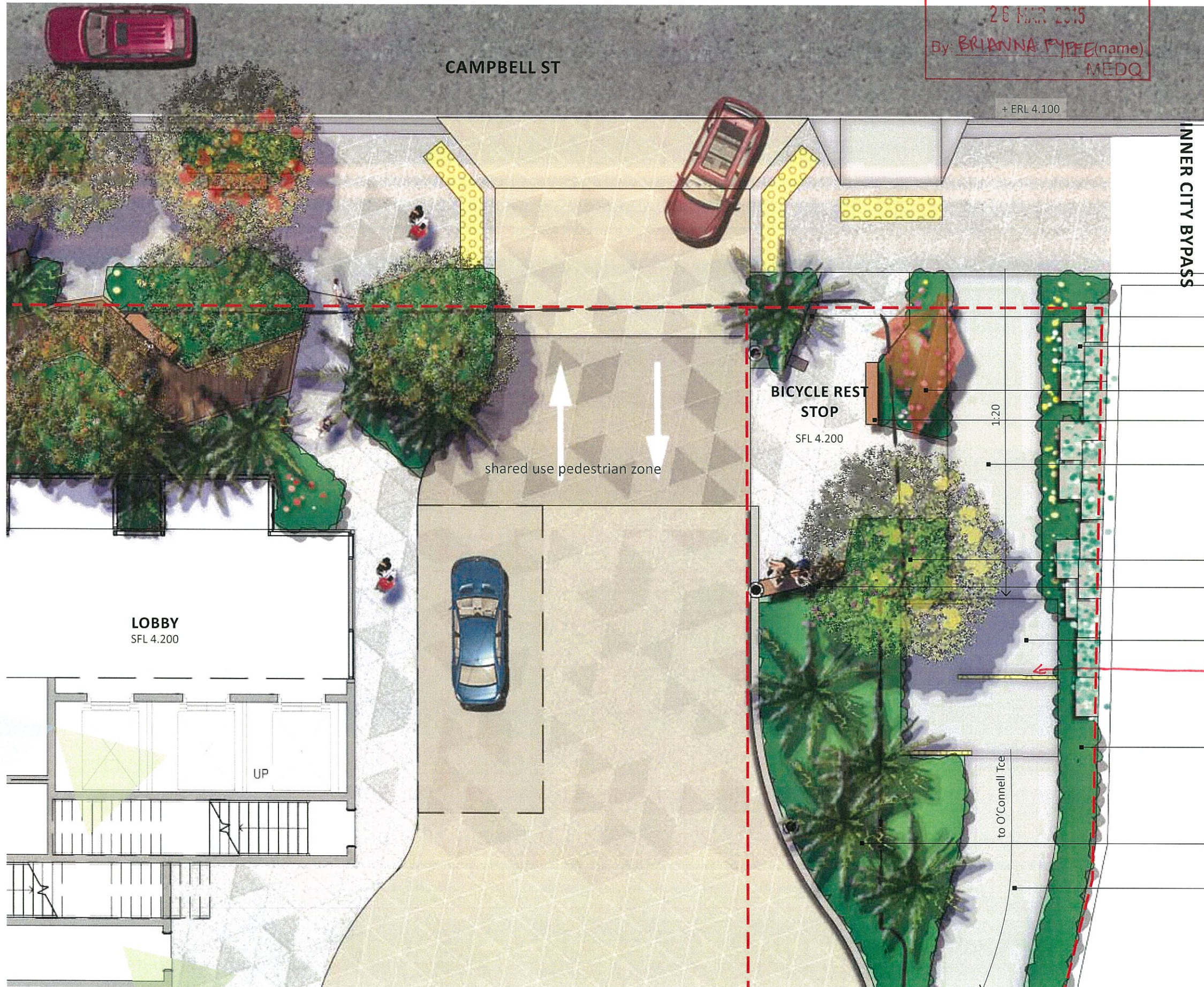


*The urban jungle creates a sculptural juxtaposition to the building form, providing a distinctive complement. Elements of the jungle will wrap and fold around the ceiling spaces and awning structures, balancing transparency and screening where required. Its height and generosity of floor area and undersurface soil treatments will ensure healthy, vibrant plant growth that will reflect and amplify the desired subtropical character of Brisbane.*

- secondary entry point from Campbell St
- 1.4m wide pathway with seating nooks and informational diagrammatic signage through urban jungle planting
- main entry point from Campbell St
- drop off zone



AMENDED IN RED  
 26 MAR 2015  
 By: BRIANNA FYFFE (name)  
 MEDQ



The bikeway connection from  
 will be retained, however realigned to  
 suit the new easement and building  
 footprint. The reinstated path will  
 follow similar gradients to the  
 existing. It will be well lit and more  
 open to allow for increased passive  
 surveillance from the surrounding  
 land uses.

- water bubbler & air compressor for bicycle riders
- modular green wall to existing ICB retaining wall
- possible sculpture location
- bicycle rest stop seating
- realigned 2.4m wide bikepath, seperated from REST STOP space with planter beds
- feature tree
- seat to REST STOP edge
- new 4x4m bike slow down device
- minimum 1m wide, low planting to ICB retaining wall
- palm and understorey planting to match Urban Jungle
- realign bikeway, grade consistently to meet existing and connect to

*Bikeway subject to compliance assessment*

**BIKEWAY AND REST STOP**  
 0 1 2 3 4 5m / 1:100 @ A3



activated and elevated dining terrace with passive surveillance to street and urban jungle

activated street frontage

*CPTED initiatives are applied to the spaces, however simply through activation and passive surveillance the area will be perceived as safer. Glass walls, balustrades and doors on ground level as well as upper levels balcony spaces in conjunction with trees positioning allows sight lines to be maintained for passive surveillance. Quality of lighting will be to relevant standards to ensure visibility at night and CCTV cameras will be utilised at specific locations.*

- the design allows for activated spaces and passive surveillance opportunities from both ground and upper levels of the building
- CCTV to provide full coverage to external areas of lobby, urban jungle and rest stop - full extent of system to be determined by a specialist consultant as part of future works
- Lighting to provide sufficient levels of illumination to external areas of lobby urban jungle and rest stop - full extent of system to be determined by a specialist consultant as part of future works

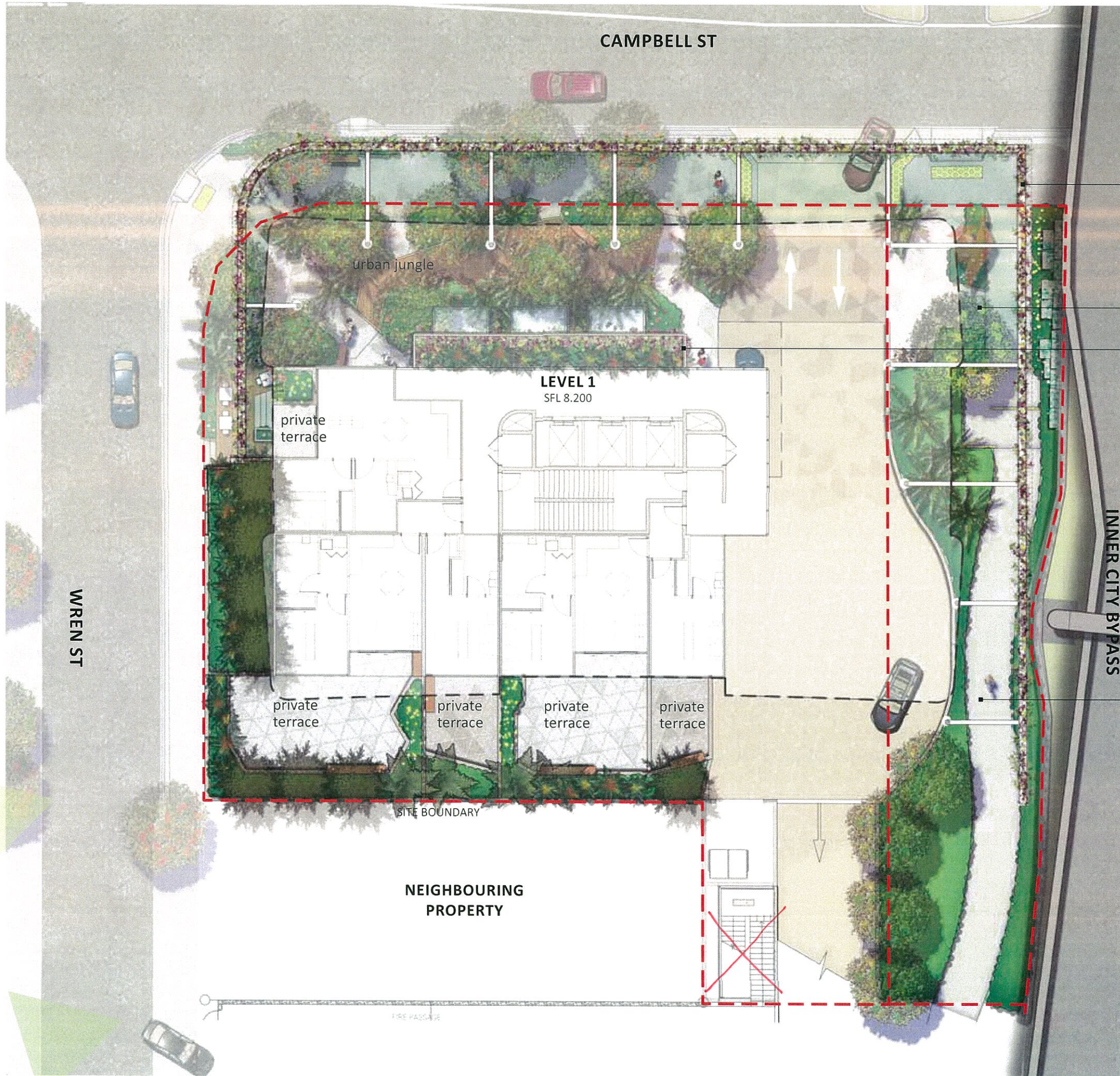
line of awning over

AMENDED IN RED  
26 MAR 2015  
By: BRIANNA FYFFE (name)  
MEDQ



0 2 4 6 8 10M/ 1:200@A3

**CPTED**



awning with 600mm deep planter box and trellis to create

REST STOP space under

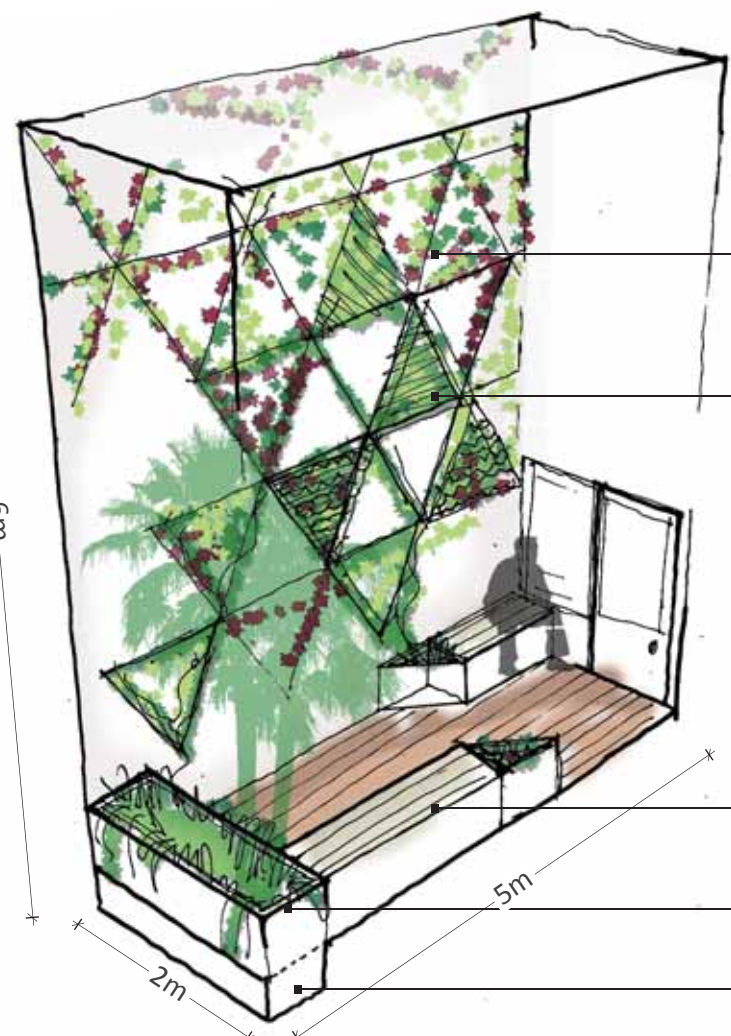
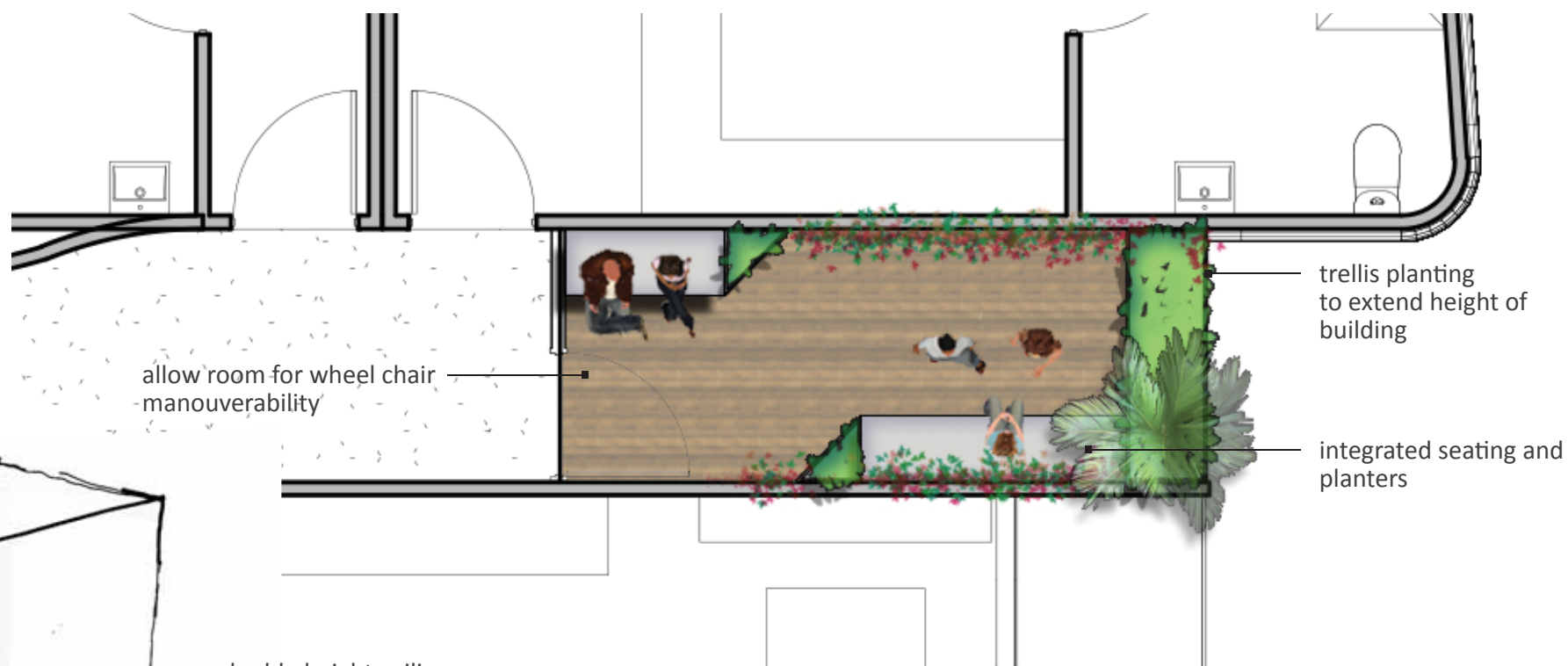
shallow green roof over lobby

bikeway under building awning

AMENDED IN RED  
 26 MAR 2015  
 By: BRIANNA FYFFE(name)  
 MEDQ

**FIRST FLOOR PLAN**  
 0 2 4 6 8 10m / 1:200 @ A3





**PERSPECTIVE**

- allow room for wheel chair manouverability
- double height ceiling
- planted trellis to match shape and size of patterned building wrap, planter to encourage growth up wall and across ceiling of pod
- integrated seating and planters
- low planting to allow light into space
- 1m deep x .6m wide planter to building edge, planter to recess below floor level

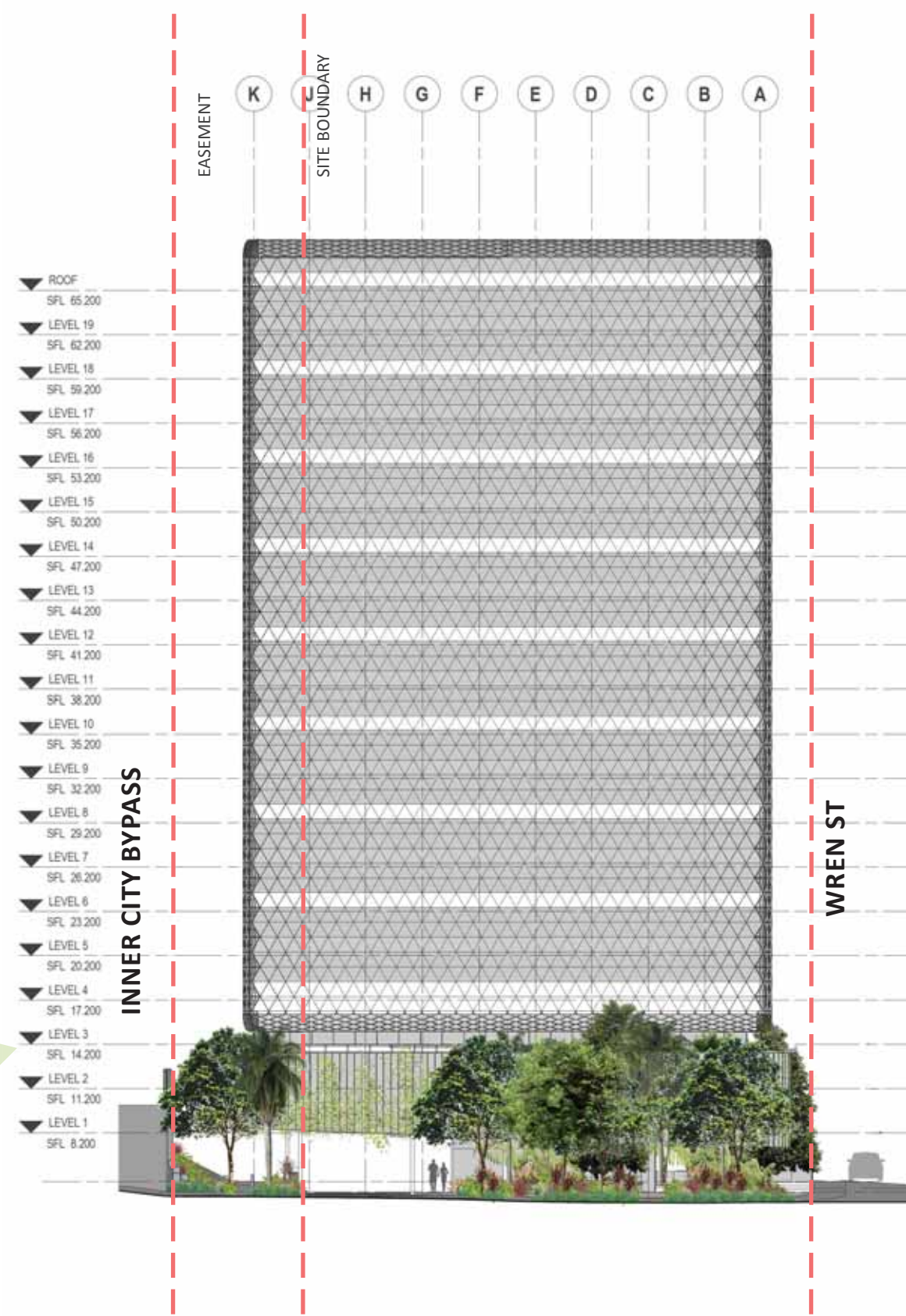


**PLAN**

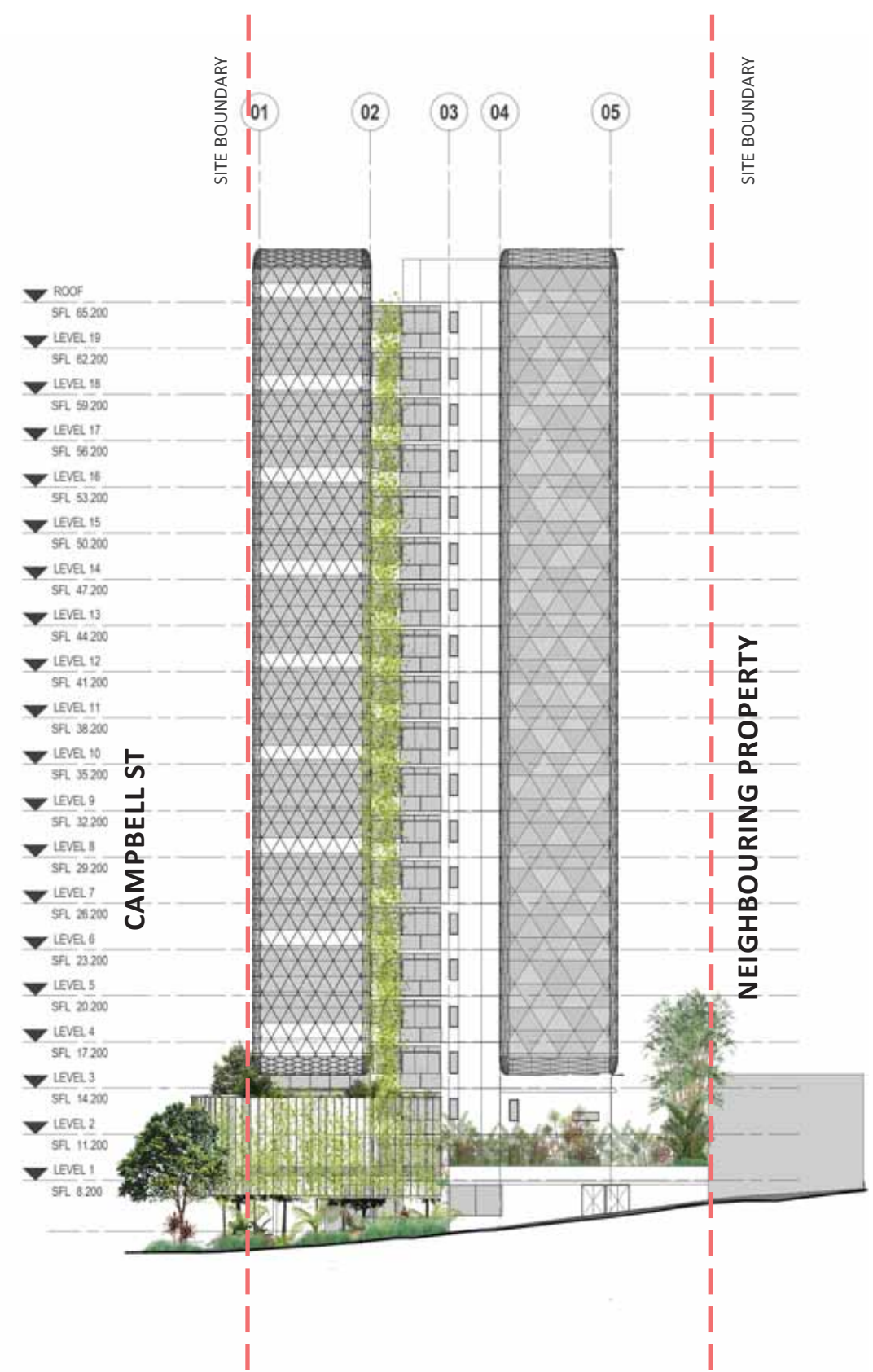
5m / 1:100 @ A3

*Designed to promote individual or small group interactions, the healing pods read as sky gardens that climb the facades of the building. Their function is both aesthetic and therapeutic and will assist in promoting the building intentions as recuperation environment.*

**HEALING PODS**



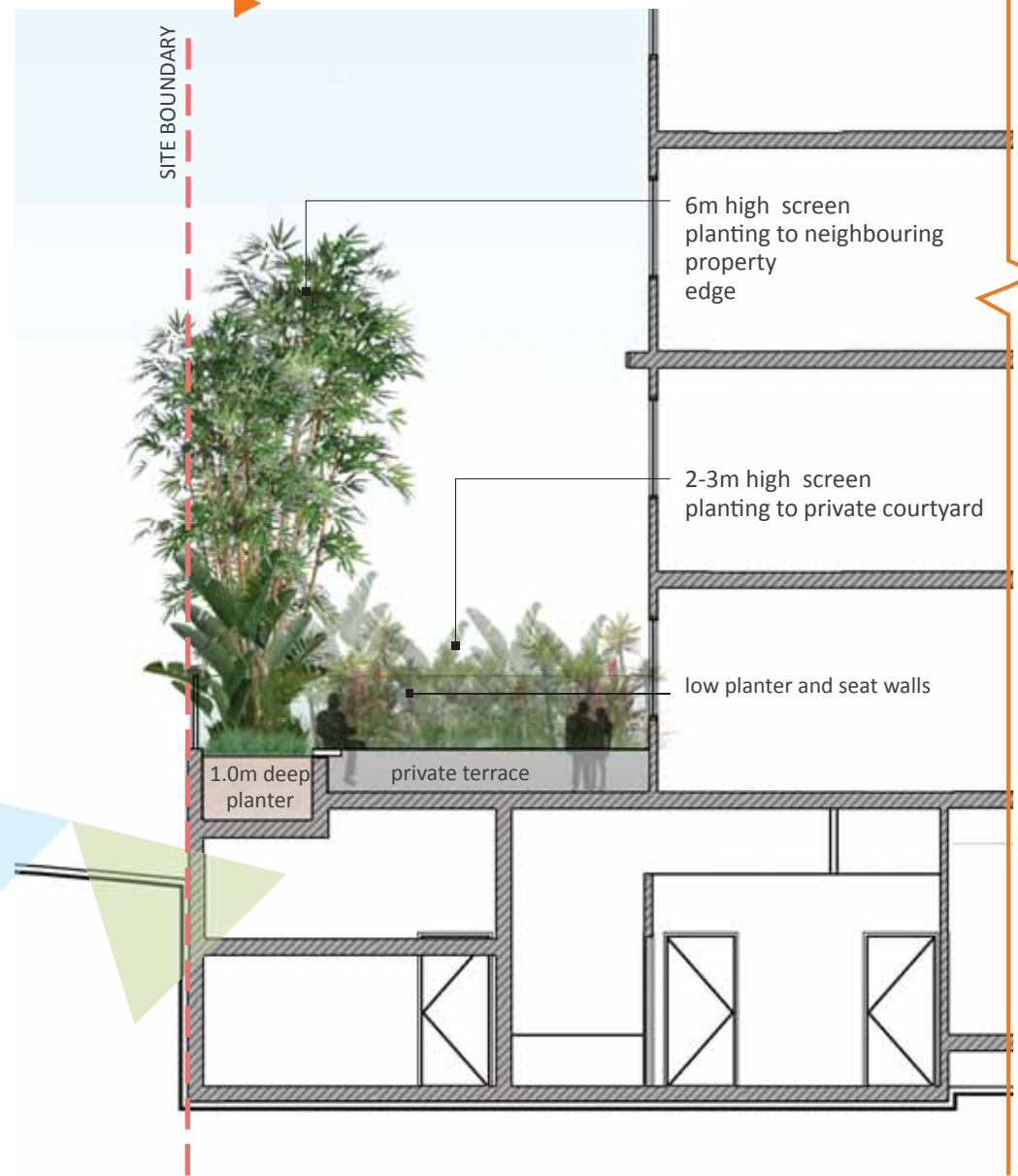
**CAMPBELL ST ELEVATION**



**WREN ST ELEVATION**



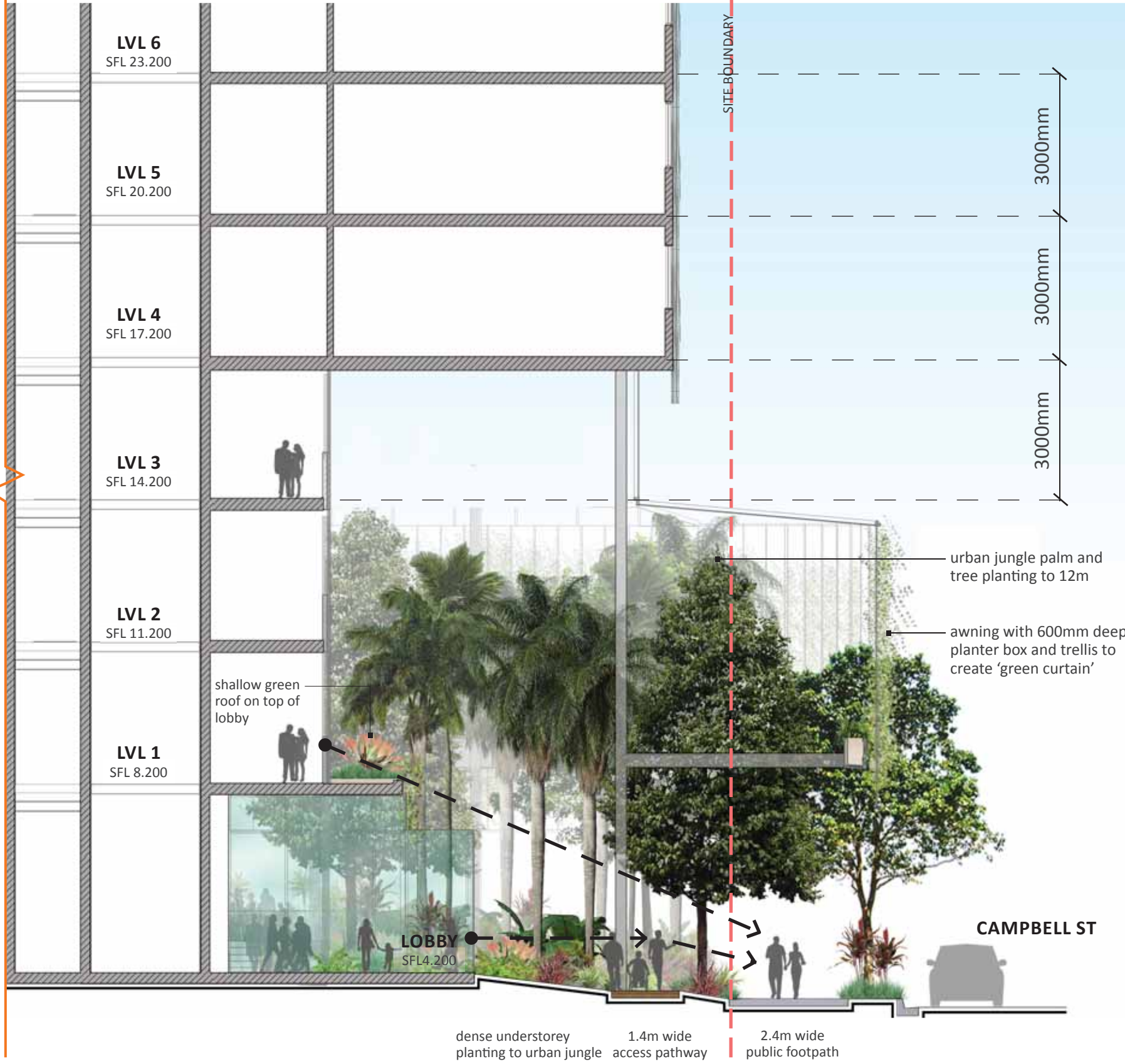
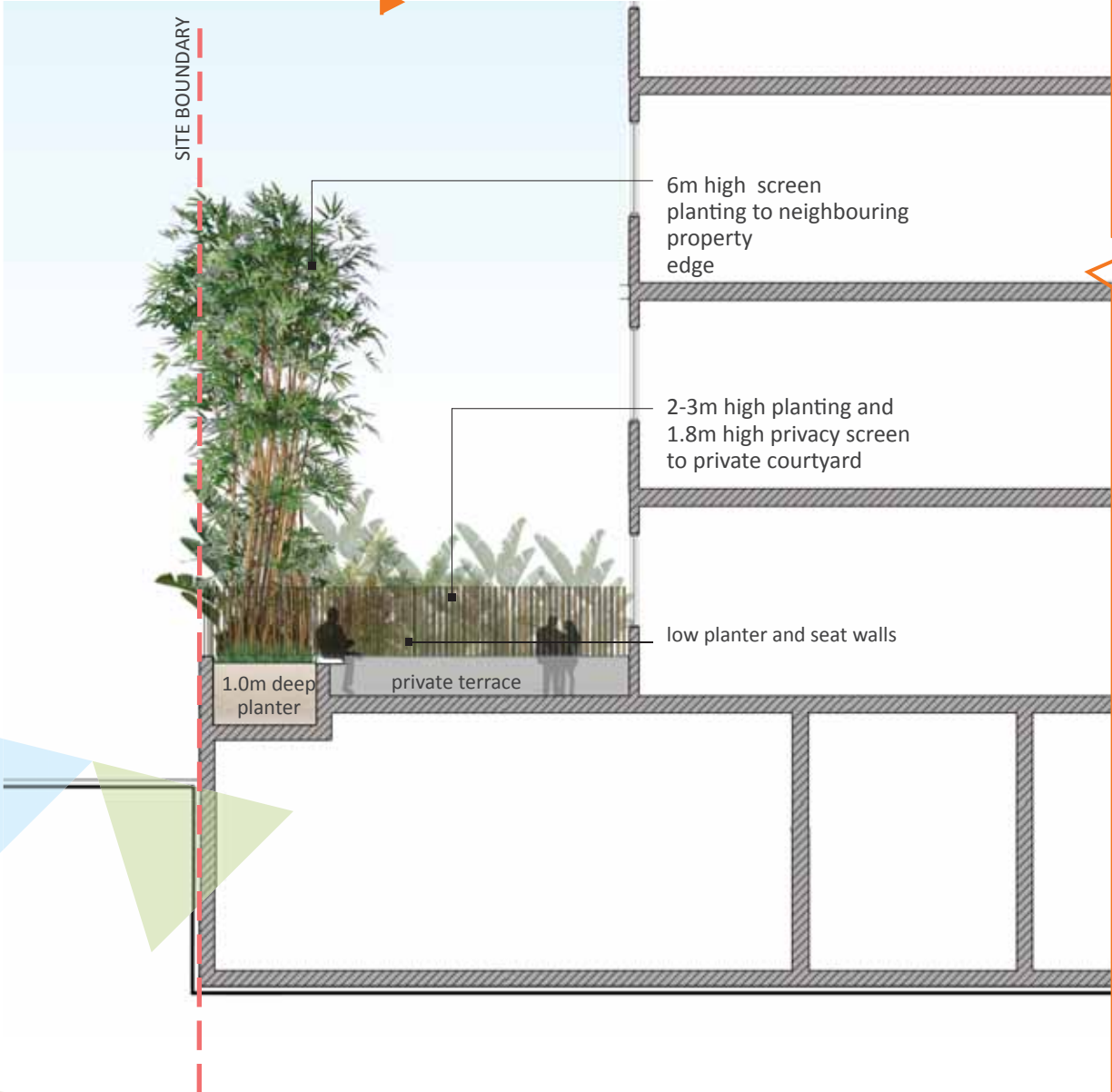
# KEY PLAN A



## SECTION A



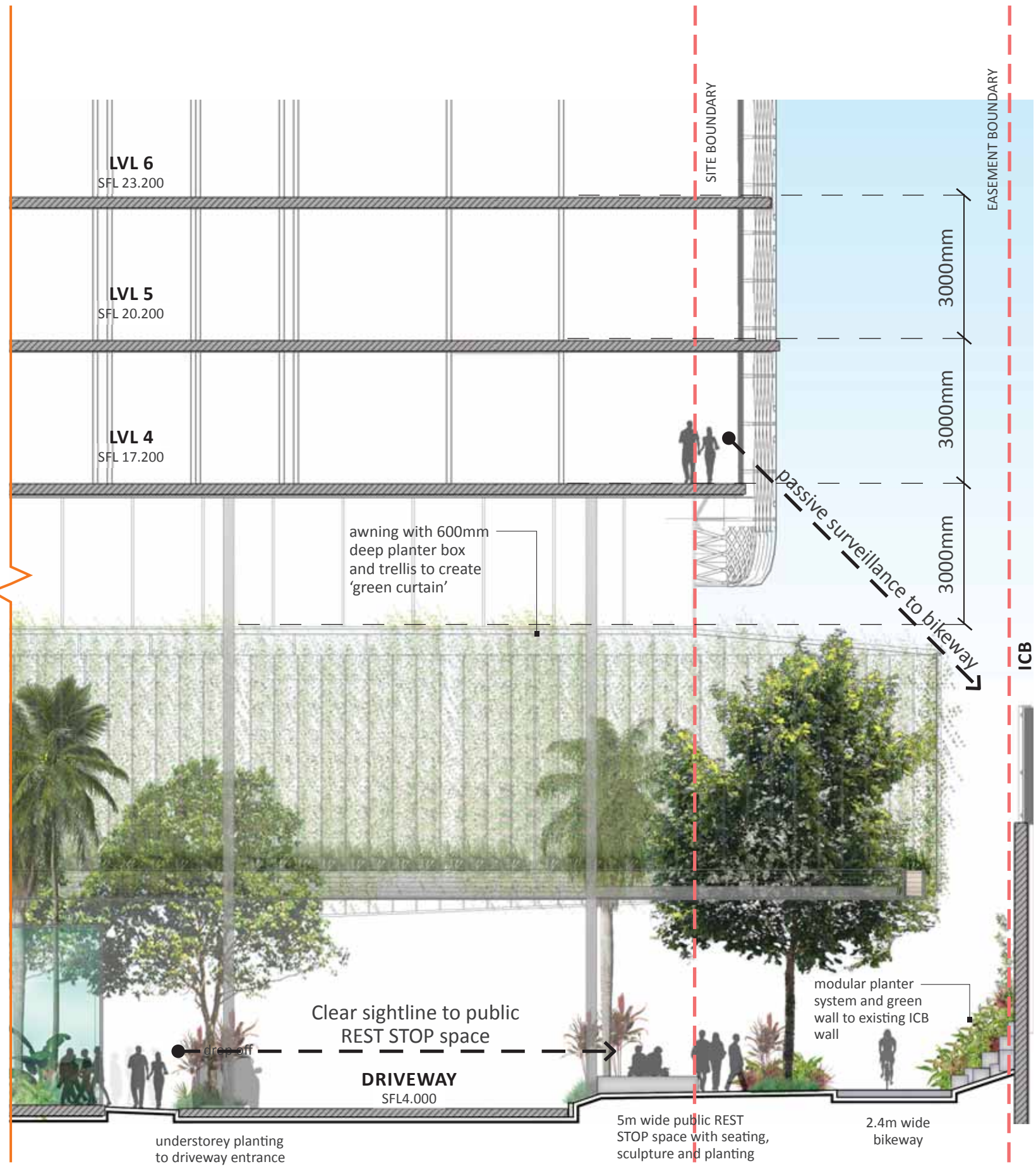
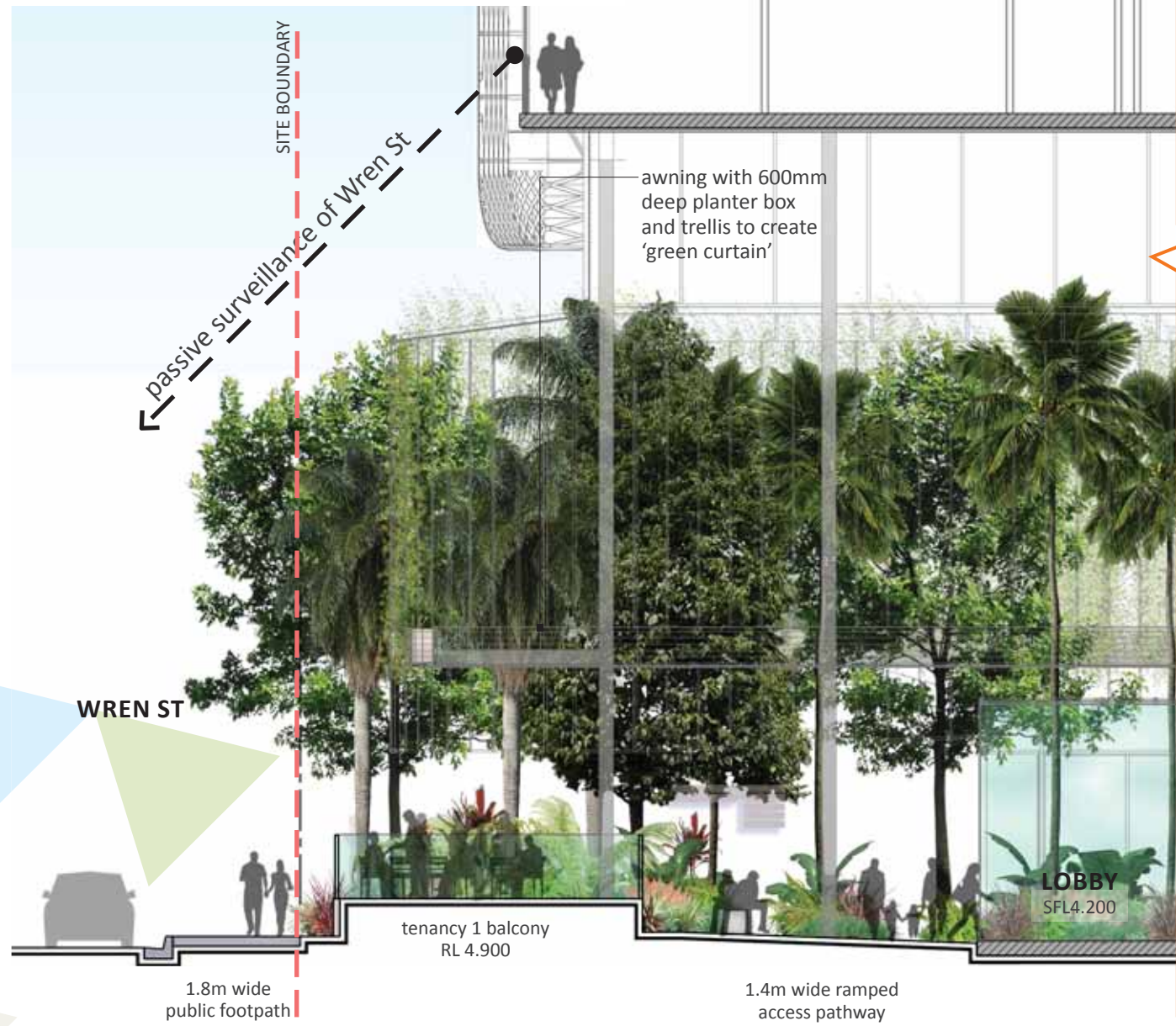
# KEY PLAN



## SECTION B



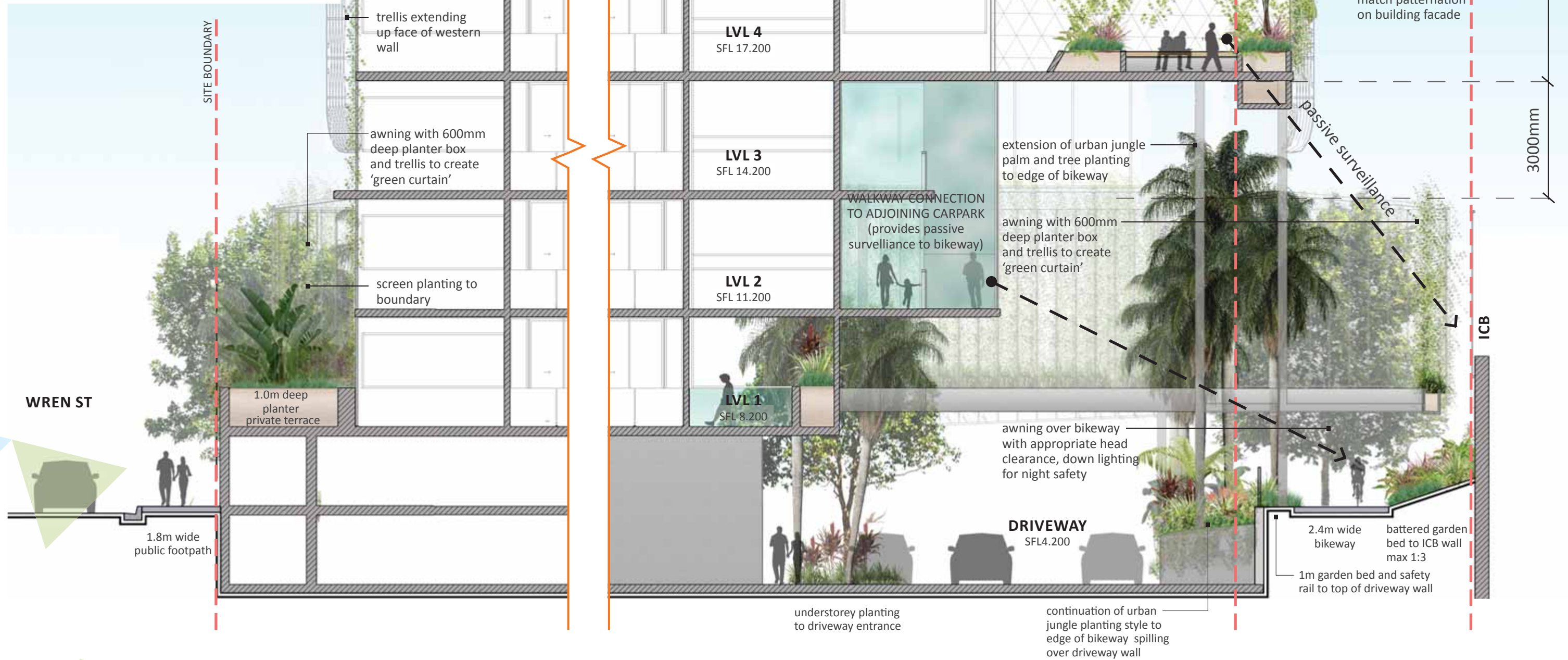
# KEY PLAN



## SECTION C



# KEY PLAN



## SECTION D



**TYPICAL STREETScape PLANT SCHEDULE**

**TREES**

**BOTANICAL NAME**

*CUPANIOPSIS anacardiodes*

*HARPULIA pendula*

**GRASSES**

*CORDYLINE sp*

*LIRIOPE 'evergreen giant'*

*LIRIOPE 'stripey white'*

*TRACHELOSPERMUM jasminoides*

**COMMON NAME**

Tuckeroo

Harpulia

Palm Lily

Evergreen Giant

Stripey White

Star Jasmine



*CUPANIOPSIS anacardiodes*



*HARPULLIA pendula*



*LIRIOPE evergreen giant*



*LIRIOPE stripey white*



*TRACHELOSPERMUM jasminoides*

**TYPICAL GREEN WALL + ROOF PLANT SCHEDULE**  
**GRASSES AND GROUNDCOVERS**

<i>BOTANICAL name</i>	<b>COMMON NAME</b>
<i>ACACIA cognata</i>	Limelight bower wattle
<i>ADIANTUM species</i>	Maidenhair Fern
<i>AESCHYNANTHUS radicans</i>	Lipstick Plant
<i>ASPLENIUM species</i>	Birds Nest Fern
<i>BLECHNUM species</i>	Silver Lady Fern
<i>CALATHEA zebrina</i>	Zebra plant
<i>COTYLEDON orbiculata</i>	Silver Waves
<i>CRASSULA falcata</i>	Propeller Plant
<i>CRASSULA tetragona</i>	Bonsai Pine
<i>DAVALLIA pyxidata</i>	Hares Foot Fern
<i>DENDROBIUM speciosum</i>	Native Orchids
<i>DIANELLA species</i>	Dianella
<i>DRACAENA reflexa</i>	Song of India
<i>EPIPREMNUM aureum</i>	Native monstera
<i>ENSETE ventricosum</i>	Ethiopian Bannana
<i>FICUS pumila</i>	Wild Iris
<i>GREVILLEA lanigera</i>	Wooly Grevillea
<i>HEMIGRAPHIS colorata</i>	Purple Waffle Plant
<i>HOSTA species</i>	Mighty Mouse
<i>LOMANDRA species</i>	Mat Rush
<i>MYOPORUM parvifolium</i>	Creeping Boobialla
<i>NANDINA domestica</i>	Heavenly Bamboo
<i>NEPHROLEPIS species</i>	Boston Fern
<i>PANDOREA jasminoides</i>	Bromeliad Gypsy Lady
<i>PHILODENDRON imperial red</i>	Imperial Red
<i>PHONTINIA fraseri</i>	Red Robin
<i>TRACHELOSPERMUM jasminoides</i>	Star Jasmine
<i>TRADESCANTIA pallida 'Purpurea'</i>	Tradescantia
<i>SENECIO spathulatus</i>	Coast Groundsel



*AESCHYNANTHUS radicans*



*ASPLENIUM species*



*CALATHEA zebrina*



*DIANELLA species*



*EPIPREMNUM aureum*



*ENSETE ventricosum*



*HEMIGRAPHIS colorata*



*PHONTINIA fraseri*



*TRACHELOSPERMUM jasminoides*

## TYPICAL INTERNAL PLANT SCHEDULE

### TREES AND PALMS

#### BOTANICAL NAME

*ARCHONTOPHOENIX Cunninghamiana*

*CHAMAEDOREA elegans*

*ELAEOCARPUS eumudii*

*ELAEOCARPUS obovatus*

*HARPULIA pendula*

*RHAPIS excelsa*

*WODYETIA bifurcata*

#### COMMON NAME

Bangalow Palm

Parlor Palm

Blue Quandong

Hard Quandong

Harpulia

Lady Palm

Foxtail Palm

#### SHRUBS

#### BOTANICAL NAME

*AECHEMA blanchetina*

*ALCANTAREA imperialis 'Rubra'*

*ALPINIA caerulea*

*ALPINIA caerulea 'Red Black'*

*ALPINIA zerumbet*

*ALOCASIA brisbanensis*

*CALADIUM bicolor 'rosebud'*

*CHAMAEDOREA elegans*

*CORDYLINE petiolaris*

*CORDYLINE fruticosa 'Electric Pink'*

*COTYLEDON orbiculata*

*CORDYLINE fruticosa 'Kirkii'*

*CYCAS revoluta*

*CYATHEA cooperii*

*DIEFFENBACHIA amoena*

*EPIPREMNUM aureum*

*HEDERA helix*

*NEPHROLEPIS exaltata*

*PHILODENDRON 'Imperial Green'*

*PHILODENDRON 'Imperial Red'*

*PHILODENDRON Xanadu*

*PHLEBODIUM aureum*

*RHAPHIS excelsa*

*STRELITZIA reginae*

*STRELITZIA nicolai*

*SYZYGIUM spp.*

*THYSANOLAENA maxima*

*ZAMIA furfuracea*

#### COMMON NAME

Orange Bromeliad

Giant Bromeliad

Native Ginger

Red Black Ginger

Variiegated Shell Ginger

Cunjevoi

Fancy leaved caladium

Bamboo Palm

Broad Leaf Palm Lily

Electric Pink

Silver Waves

Kirkii

Cycad

Australian Tree Fern

Dumbcane

Native Monstera

English ivy

Boston Fern

Imperial Green

Imperial Red

Xanadu

Blue Star Fern

Lady Finger Palm

Bird of Paradise

Giant Bird of Paradise

Lilly Pilly

Tiger Grass

Cardboard Fern



*AECHEMA blanchetina*



*ALCANTAREA imperialis 'Rubra'*



*ALPINIA caerulea 'Red Back'*



*CHAMAEDOREA elegans*



*CORDYLINE 'Electric Pink'*



*PHILODENDRON 'Imperial Red'*



*STRELITZIA reginae*



*SYZYGIUM spp.*



*THYSANOLENA maxima*

**TYPICAL INTERNAL PLANT SCHEDULE**

**GRASSES AND GROUNDCOVERS**

**BOTANICAL NAME**

*CALATHEA zebrina*

*CTENANTHE setosa*

*DIANELLA 'Little Jess'*

*DIANELLA 'Silver Streak'*

*GARDENIA radicans*

*GREVILLEA nudiflora*

*HEMIGRAPHIS colorata*

*HYMENOCALLIS littoralis*

*LIROPE muscari*

*MELAEUCA thymifolia*

*MYOPORUM parviflorum*

*NEOREGELIA cv 'Bleeding Heart'*

*NEOREGELIA cv 'Grand Slam'*

*NEOREGELIA cv 'Gypsy Lady'*

*SAGINA subulata*

*SCAEVOLA aemula*

*TULBAGHIA violacea*

*TRACHELOSPERMUM jasminoides*

*TRACHELOSPERMUM 'tricolour'*

*VIOLA hederacea*

*VRIESEA cv 'Kiwi Dusk'*

*VRIESEA cv 'Kiwi Sunset'*

*ZOYSIA tenuifolia*

**COMMON NAME**

Zebra Plant

Grey Star

Little Jess

Silver Border

Dwarf Gardenia

Curvy Tops

Purple Waffle Plant

Spider Lilly

Evergreen Giant

Thyme Leaf Honey Myrtle

Creeping Booblia

Bleeding Heart

Grand Slam

Gypsy Lady

Irish Moss

Half Flower

Society Garlic

Star Jasmine

Tri Colour Jasmine

Native Violet

Bromeliad Kiwi Dusk

Bromeliad Kiwi Sunset

Korean Carpet Grass



*CALATHEA zebrina*



*CTENANTHE setosa*



*DIANELLA 'Little Jess'*



*GARDENIA radicans*



*GREVILLEA nudiflora*



*HEMIGRAPHIS colorata*



*SAGINA subulata*



*SCAEVOLA aemula*



*TRACHELOSPERMUM jasminoides*