

PLANS AND DOCUMENTS  
referred to in the PDA APPROVAL

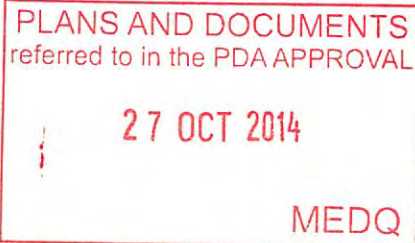
27 OCT 2014

MEDQ

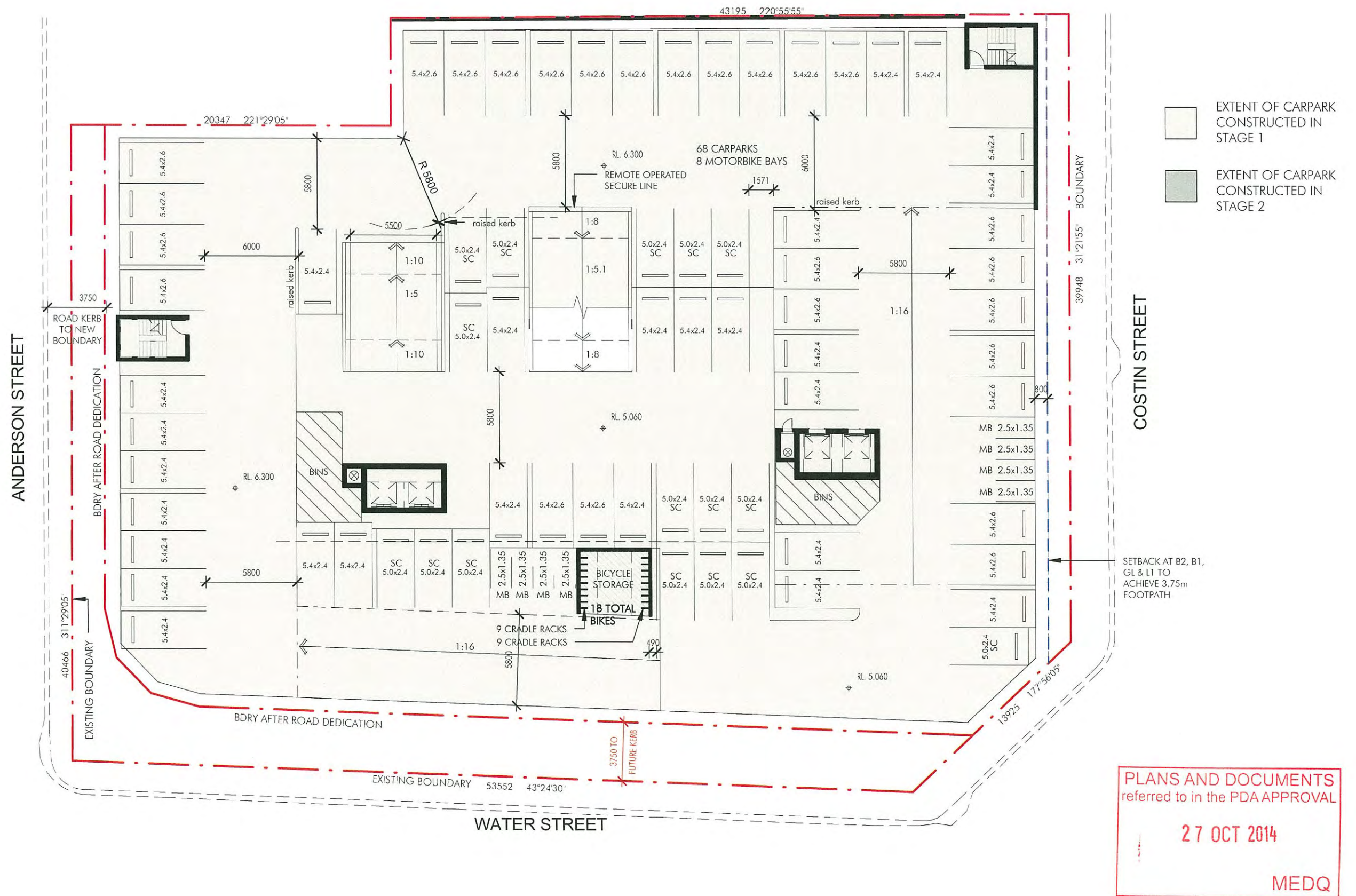










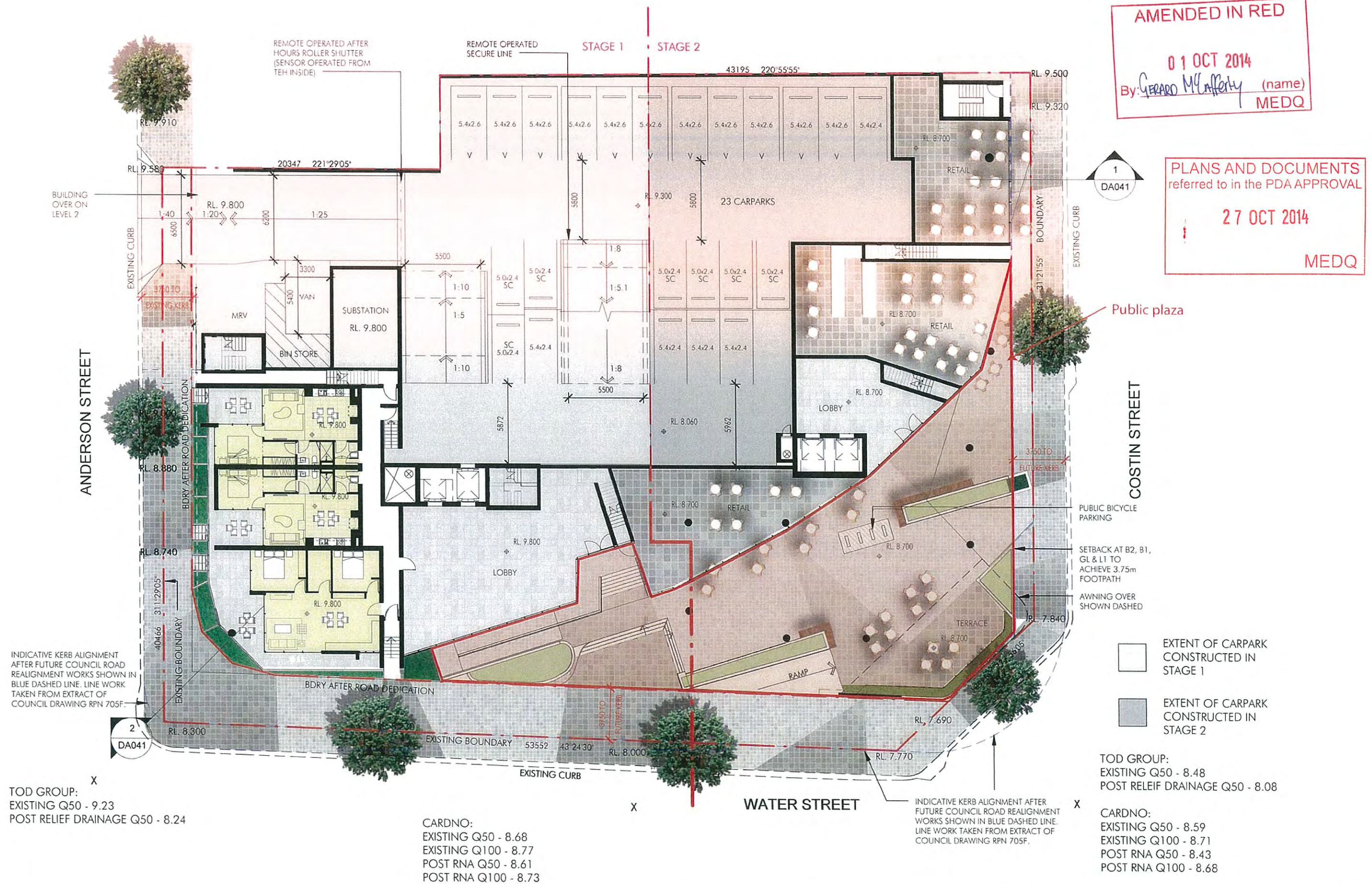




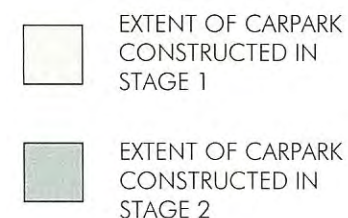
01 OCT 2014  
By: GERARD McAfferty (name)  
MEDQ

27 OCT 2014

MEDQ

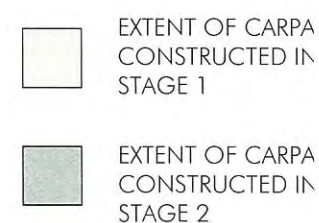








MEDQ





PWD  
UNIT TYPE B

DA041

COSTIN STREET

STAGE 1 STAGE 2

STORMWATER RETENTION TANK  
STORMWATER QUALITY

LOW HEIGHT AREA  
UNDER POOL SHELL  
- POOL PUMP ROOM  
\* 1200MM  
CLEARANCE  
UNDER POOL

23 CARPARKS  
+ 1 TANDEM

11 PENNY  
FARTHING  
CRADLE RACKS

EXTENT OF CARPARK  
CONSTRUCTED IN  
STAGE 1

EXTENT OF CARPARK  
CONSTRUCTED IN  
STAGE 2

WATER STREET

ANDERSON STREET

PWD  
UNIT TYPE A

2  
DA041





PWD  
UNIT TYPE A  
LEVEL 4 - 10

ANDERSON STREET



STAGE 1 STAGE 2

GYM

A

① TYPICAL COURTYARD SECTION

COSTIN STREET

PWD  
UNIT TYPE B  
LEVEL 4 - 15

PLANS AND DOCUMENTS  
referred to in the PDA APPROVAL  
27 OCT 2014  
MEDQ

WATER STREET





PWD  
UNIT TYPE A  
LEVEL 4 - 10



PWD  
UNIT TYPE B  
LEVEL 4 - 15

PLANS AND DOCUMENTS  
referred to in the PDA APPROVAL

27 OCT 2014

MEDQ





PWD  
UNIT TYPE A  
LEVEL 4 - 10

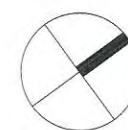


PWD  
UNIT TYPE B  
LEVEL 4 - 15

PLANS AND DOCUMENTS  
referred to in the PDA APPROVAL

27 OCT 2014

MEDQ





PWD  
UNIT TYPE A  
LEVEL 4 - 10



PWD  
UNIT TYPE B  
LEVEL 4 - 15

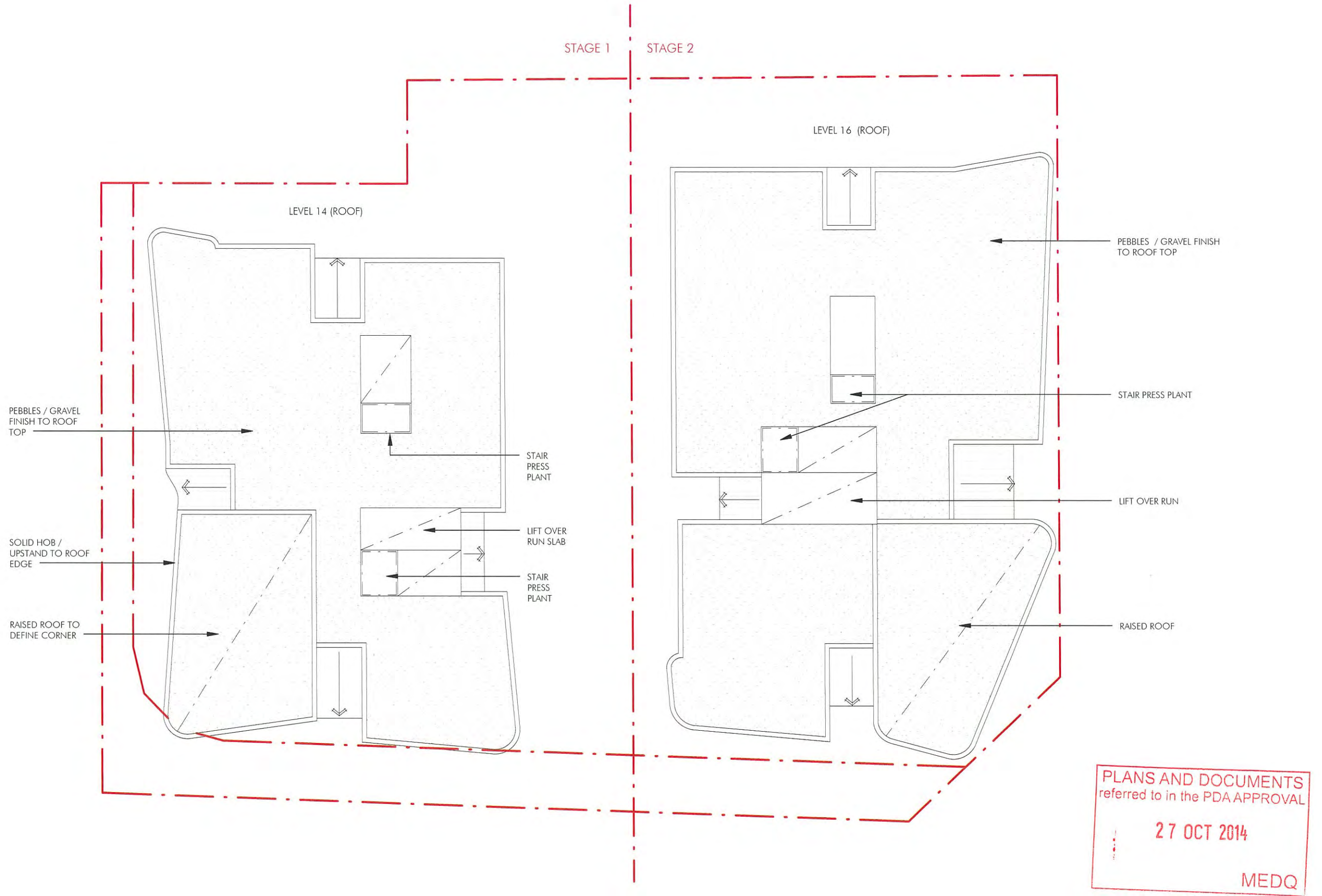
PLANS AND DOCUMENTS  
referred to in the PDA APPROVAL

27 OCT 2014

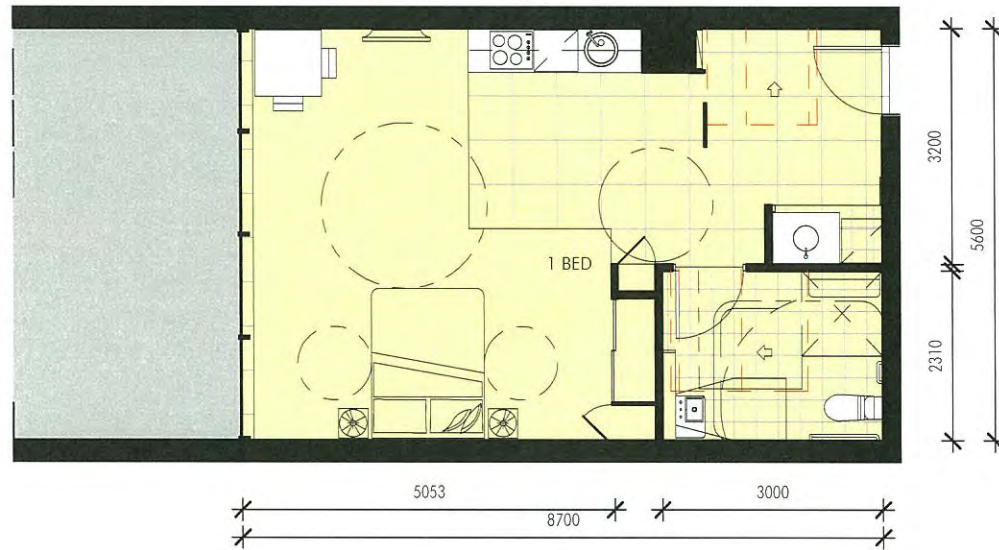
MEDQ











1 PWD UNIT TYPE A  
1 : 100



2 PWD UNIT TYPE B  
1 : 100

PLANS AND DOCUMENTS  
referred to in the PDA APPROVAL  
  
27 OCT 2014  
  
MEDQ





Client

**Propertylink**  
thinking property

Project

Residential Development  
15 Anderson Street, Fortitude Valley

Title

ELEVATIONS - ANDERSON STREET

Scale

1:300

Date

11/06/14

Number

3400\_DA28

© copyright nettleton tribe partnership Pty Ltd

Architectural Consultant

**nt**  
nettletontribe

nettleton tribe partnership Pty Ltd ABN 58 161 693 122  
Level 5, 344 Queen Street Brisbane QLD 4000  
t 07 3239 2444 f 07 3239 2455  
e brisbane@nettletontribe.com.au w nettletontribe.com.au



27 OCT 2014

MEDQ



Client



Project

Residential Development  
15 Anderson Street, Fortitude Valley

Title

ELEVATIONS - WATER STREET

Scale

1:300

Date

11/06/14

Number

3400\_DA29

© copyright nettleton tribe partnership Pty Ltd





PLANS AND DOCUMENTS  
referred to in the PDA APPROVAL

27 OCT 2014

MEDQ





PLANS AND DOCUMENTS  
referred to in the PDA APPROVAL

27 OCT 2014

MEDQ

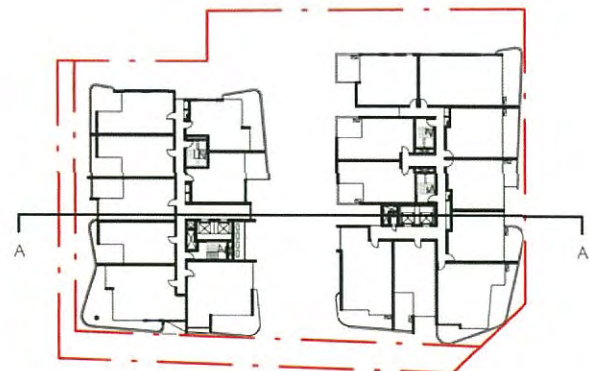
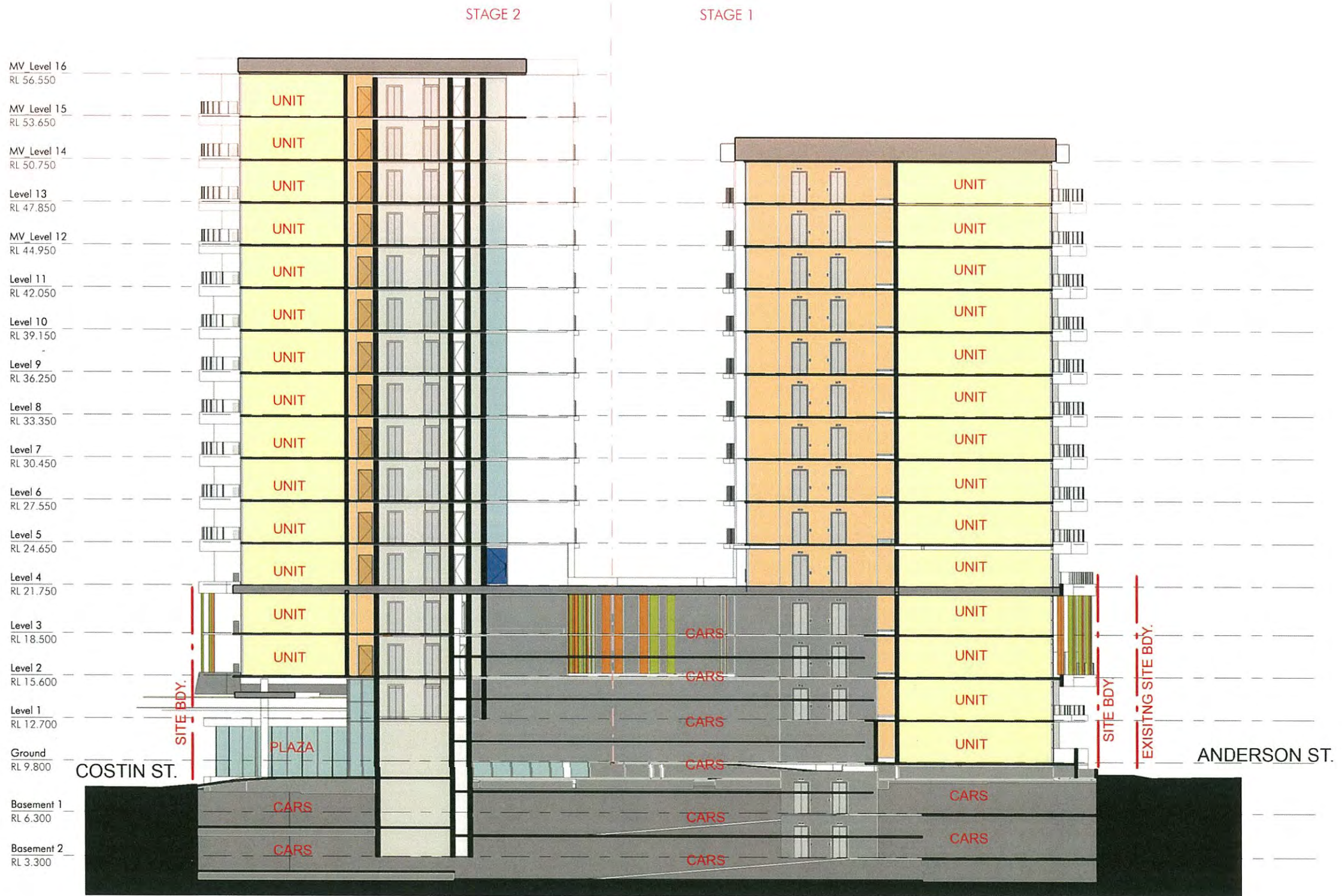




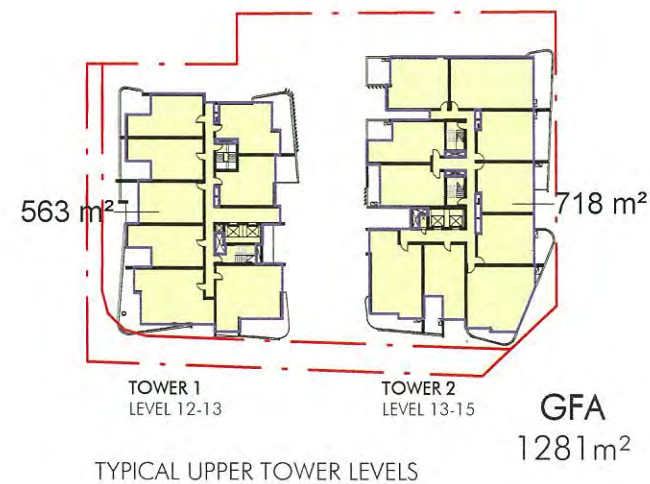
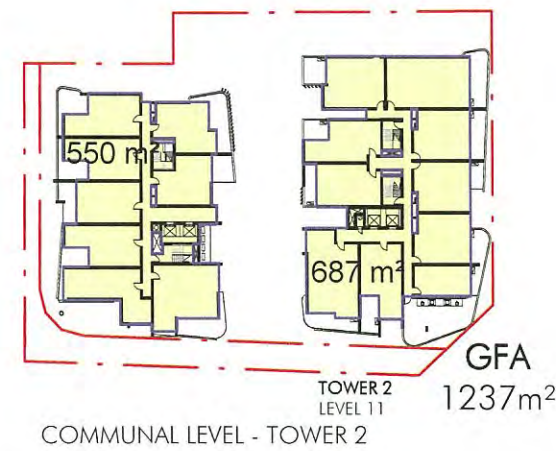
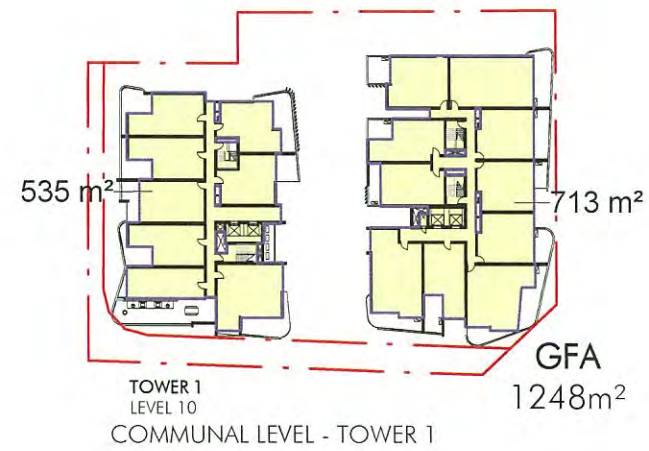
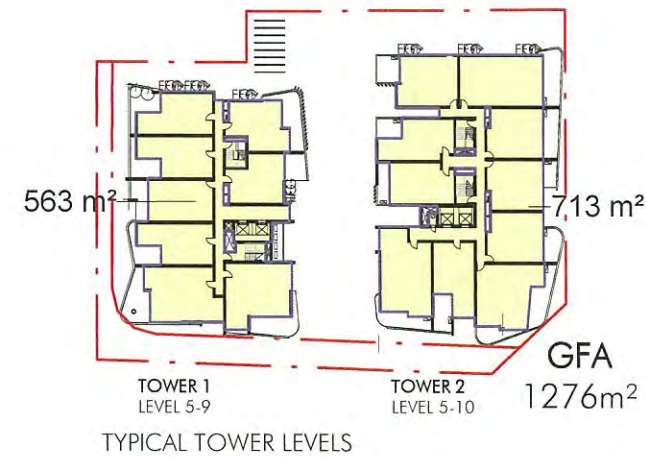
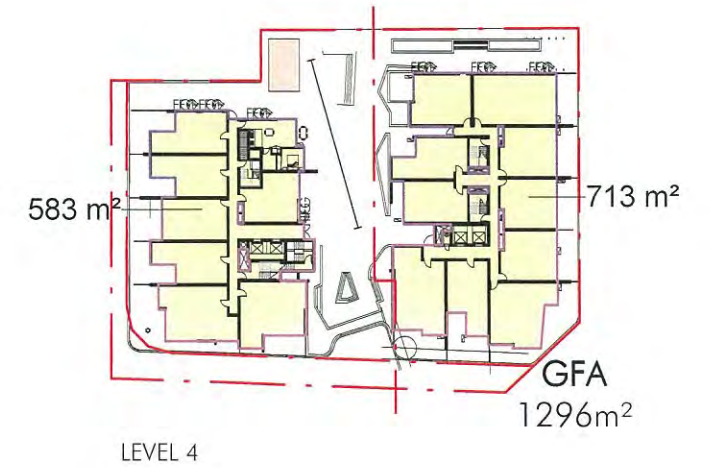
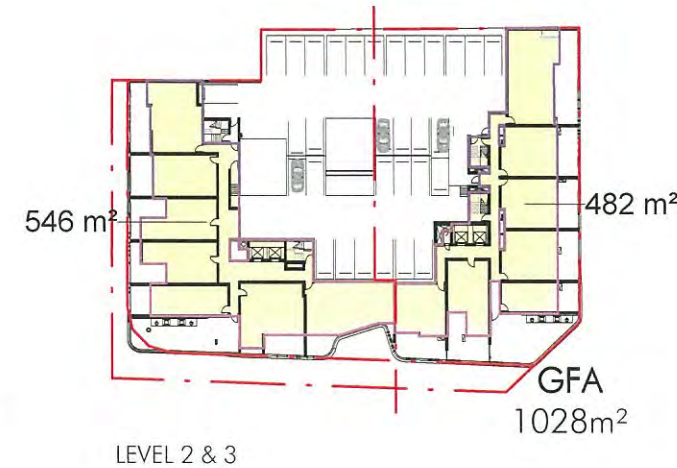
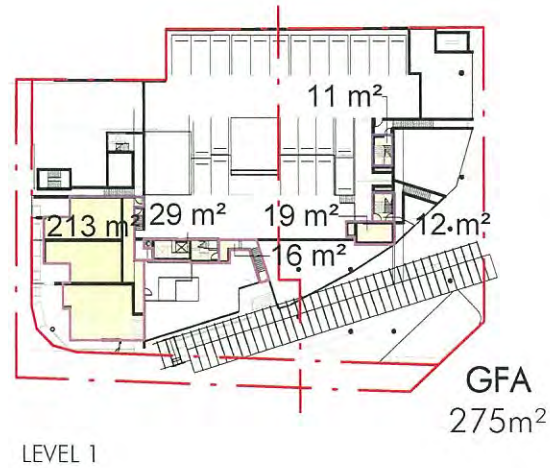
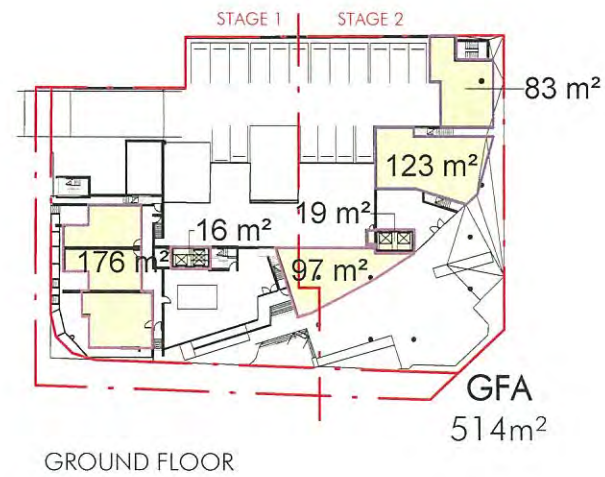
PLANS AND DOCUMENTS  
referred to in the PDA APPROVAL

27 OCT 2014

MEDQ







PLANS AND DOCUMENTS  
referred to in the PDA APPROVAL

27 OCT 2014

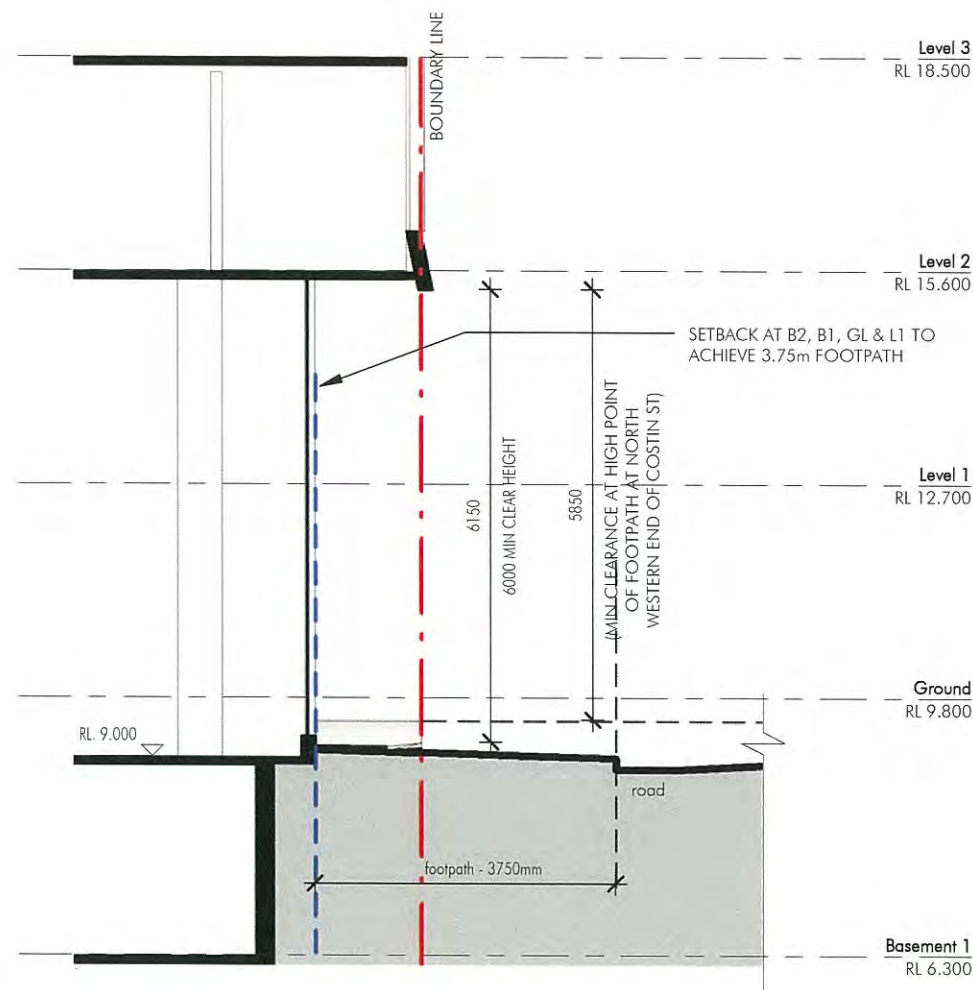
MEDQ



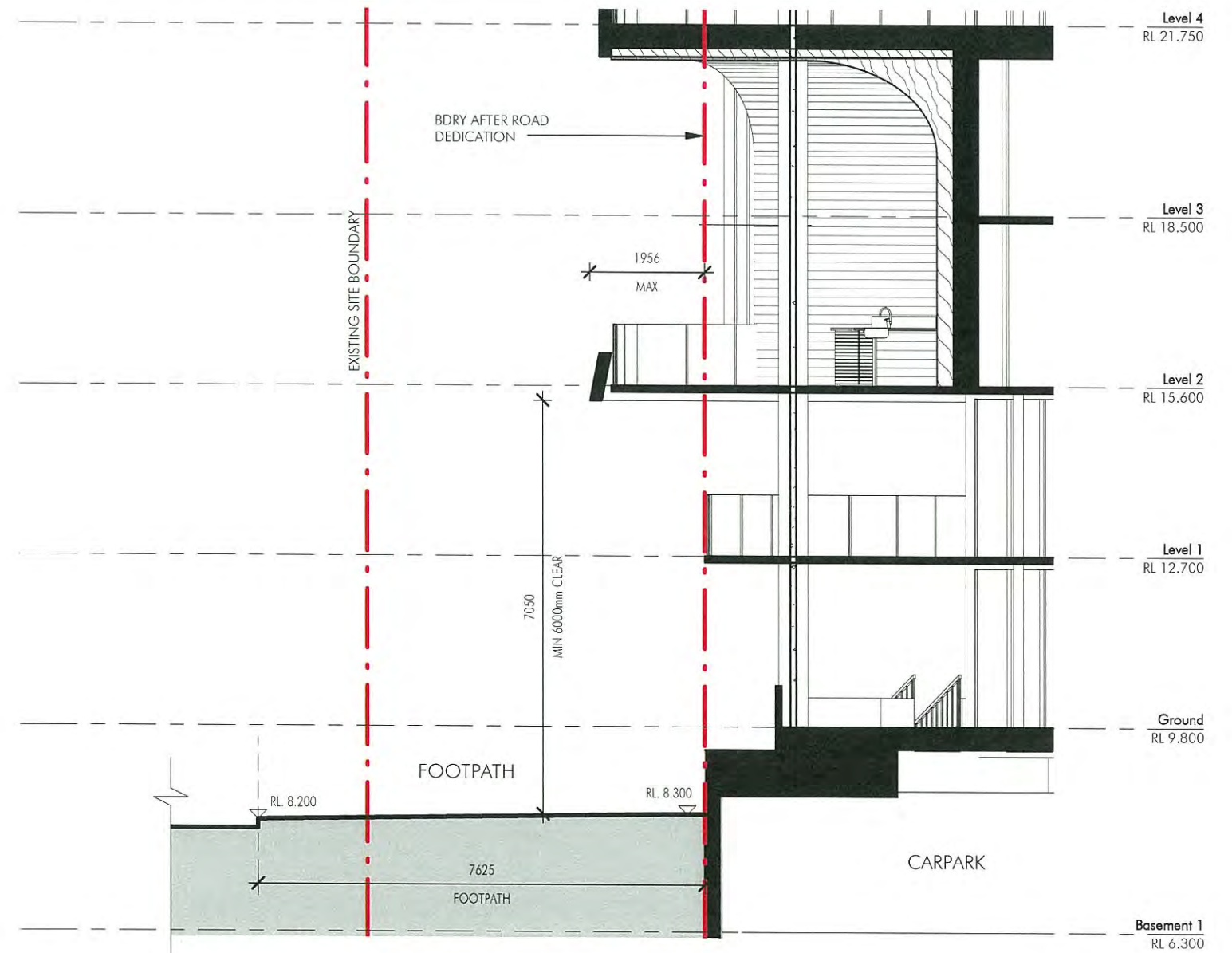
PLANS AND DOCUMENTS  
referred to in the PDA APPROVAL

27 OCT 2014

MEDQ



1 Costin Street Section  
1 : 100



2 Corner of Water Street and Anderson Street Section  
1 : 100





| Stage 1 Unit Areas |                  |       |               |          |               |        |               |
|--------------------|------------------|-------|---------------|----------|---------------|--------|---------------|
| No. of Levels      | Level            | <60m2 | x No. of lvls | 60-100m2 | x No. of lvls | >100m2 | x No. of lvls |
| 8                  | Level 4-9, 12-13 | 6     | 48            | 2        | 16            | 0      | 0             |
| 1                  | Level 10         | 6     | 6             | 1        | 1             | 1      | 1             |
| 1                  | Level 11         | 6     | 6             | 1        | 1             | 0      | 0             |
| 1                  | Level 2          | 3     | 3             | 3        | 3             | 1      | 1             |
| 1                  | Level 3          | 3     | 3             | 3        | 3             | 0      | 0             |
| 2                  | Level 1 & Ground | 2     | 4             | 1        | 2             | 0      | 0             |
| TOTAL              |                  |       | 70            |          | 26            |        | 2             |
|                    |                  |       |               |          |               |        | 98            |

| Stage 2 Unit Areas |                   |       |               |          |               |        |               |
|--------------------|-------------------|-------|---------------|----------|---------------|--------|---------------|
| No. of Levels      | Level             | <60m2 | x No. of lvls | 60-100m2 | x No. of lvls | >100m2 | x No. of lvls |
| 10                 | Level 4-10, 13-15 | 6     | 60            | 4        | 40            | 0      | 0             |
| 1                  | Level 11          | 6     | 6             | 3        | 3             | 1      | 1             |
| 1                  | Level 12          | 6     | 6             | 3        | 3             | 0      | 0             |
| 1                  | Level 2           | 5     | 5             | 1        | 1             | 1      | 1             |
| 1                  | Level 3           | 5     | 5             | 1        | 1             | 0      | 0             |
| 2                  | Level 1 & Ground  | 0     | 0             | 0        | 0             | 0      | 0             |
| TOTAL              |                   |       | 82            |          | 48            |        | 2             |
|                    |                   |       |               |          |               |        | 132           |

PLANS AND DOCUMENTS  
referred to in the PDA APPROVAL

27 OCT 2014

MEDQ





Architectural site plan for a building project, showing a yellow building footprint, parking areas, and landscaping. The plan includes labels for "ANDERSON STREET" and "WATER STREET". A red dashed line divides the plan into "STAGE 1" and "STAGE 2". Key features include a "SUBSTATION", "MRV", "BIN STORE", "VAN", "LOBBY", "RAMP", "Timber seating", "Jasmine on stainless wires above", "Raised planters", and "Green roof above". Elevation markers like "RL 9.800" and "RL 8.060" are present. A north arrow is located in the top right corner.

COSTIN STREET

— Feature Alcantarea

27 OCT 2014

MEDQ

CARDNO:  
EXISTING Q50 - 8.68  
EXISTING Q100 - 8.77  
POST RNA Q50 - 8.61  
POST RNA Q100 - 8.73

TOD GROUP:  
EXISTING Q50 - 8.48  
POST RELEIF DRAINAGE Q50 - 8.08

CARDNO:  
EXISTING Q50 - 8.59  
EXISTING Q100 - 8.71  
POST RNA Q50 - 8.43  
POST RNA Q100 - 8.68



ANDERSON STREET



WATER STREET



## Landscape Intent Podium floor plan

30564-LI-02  
Date: 21 March 2014  
Issue: A

COSTIN STREET

PLANS AND DOCUMENTS  
referred to in the PDA APPROVAL

27 OCT 2014

MEDQ





# Landscape Intent Plant palette

30564-LI-03  
Date: 21 March 2014  
Issue: A

## TREES



Waterhousia floribunda



Pandanus pedunculatus

## MATERIALS



Nambucca river rock



Exposed Aggregate



Stainless steel wires with jasmine



Timber seats

## SHRUBS and GROUNDCOVERS



Magnolia grandiflora 'Little Gem'



Rhapis excelsa



Thysanolaena maxima



Liriope Stripey white



Liriope Evergreen giant



Calathea zebrina



Alcantarea imperialis rubra



Philodendron Xanadu



Cordyline rubra



Bromeliad species



Feature green walls

PLANS AND DOCUMENTS  
referred to in the PDA APPROVAL

27 OCT 2014

MEDQ