

Integrated perspective

Arqus Design Pty Ltd
 ABN 68 135 616 303
 Level 2 15 Malt Street
 Fortitude Valley Qld 4006
 PO Box 2455
 New Farm Qld 4005

Registration:
 Nominated Architect: Scott Peabody
 QLD: 2644
 NSW: 9038
 VIC: 800111 (Arqus Design 600035)

mail@arqusdesign.com.au Phone 07 3358 0888
 www.arqusdesign.com.au Fax 07 3358 0899

Arqus Design acknowledges the Traditional Owners of Country on which we live, work and design and pay our respects to their Elders, past and present.

NOTES

Contractors are to verify all dimensions on site before commencing any work or producing shop drawings.

These drawings are protected by the laws of copyright and may not be copied or reproduced without the written permission of Arqus Design.

Detail applicable to the scale of the drawing published.

DATE	REVISION	ISSUE
29/05/24	FOR INFORMATION	A
30/05/24	FOR INFORMATION	B
04/07/24	FOR INFORMATION	C
18/07/24	SITE PLAN- UPDATE	D
19/07/24	PRELIMINARY DA PACKAGE	E
23/07/24	PRELIMINARY DA PACKAGE-UPDATED	F
31/07/24	SITE PLAN-UPDATE	G
20/08/24	SITE PLAN- UPDATE	H
21/08/24	PRELIMINARY DA PACKAGE	I
23/08/24	DA PACKAGE	J
26/09/24	COMMUNAL OPEN SPACE AMENDMENT	K
14/10/24	FOR INFORMATION	L
20/06/25	FOR INFORMATION	M
05/08/25	DA PACKAGE UPDATE	N
06/08/25	DA PACKAGE UPDATE	O
10/09/25	DA PACKAGE UPDATE	P
10/10/25	DA PACKAGE UPDATE	Q

NOTES:
 REFER REFERENCED DRAWINGS BELOW FOR THE RELEVANT CONSULTANT INFORMATION FOR CIVIL INFRASTRUCTURE, LOT BOUNDARIES, LANDSCAPE DETAILS, LEVELS AND FALLS.
 VERIFY ALL REFERENCED INFORMATION ON THIS PLAN WITH THE RELEVANT CONSULTANT DRAWINGS AND NOTIFY OF NEW INFORMATION MADE AVAILABLE OR OF ANY DISCREPANCIES.

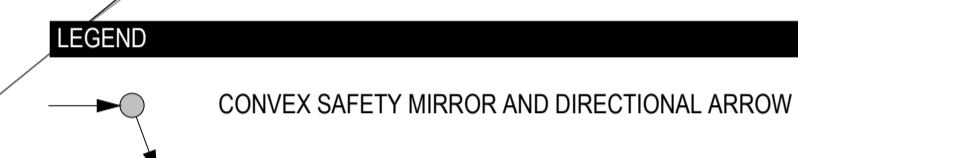
REFERENCED DRAWINGS:
 LANDPARTNERS- BUILT ENVIRONMENT CONSULTANTS
 DETAIL SURVEY
 PLAN REFERENCE BRSS8271-000-3-1

CIVIL- HURLEY CONSULTING ENGINEERS
 CONCEPT BULK EARTHWORKS LAYOUT PLAN
 PLAN REFERENCE C24004A-SK-C100 REVISION B

RPS GROUP
 SITE MASTERPLAN
 PLAN REFERENCE 004868 OXLEY RESIDENTIAL VERSION C

ABBREVIATIONS

CODE	DESCRIPTION
------	-------------



CLIENT



PROJECT

OXLEY RESIDENTIAL DEVELOPMENT
 10 HONEYEATER CIRCUIT, OXLEY
 LOT 302 ON SP326512

Country: Yugara & Yugarabul
 DRAWING

SITE PLAN-GROUND FLOOR

JOB NUMBER	DESIGN	DRAWN	CHECKED
23-0069	SP	KF	AA

SCALE	DATE CREATED	NORTH
1 : 250	29/02/24	
@A1		
@A3		

DRAWING NUMBER

A1-1-01

ISSUED FOR

DA PACKAGE

1 SITE PLAN - GROUND FLOOR - DEEP PLANTING
 1 : 250

HONEYEATER CIRCUIT



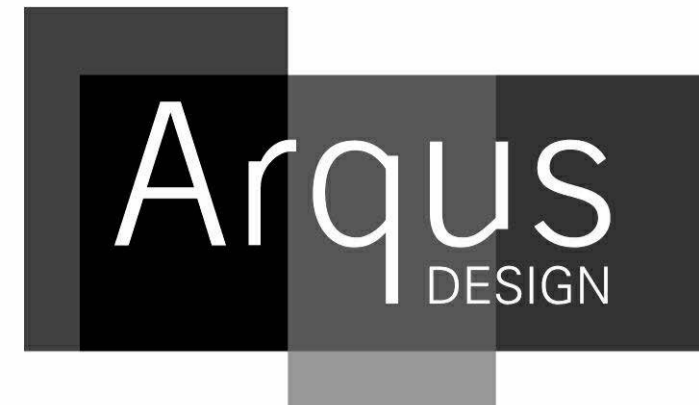
NOTES:
 REFER REFERENCED DRAWINGS BELOW FOR THE RELEVANT CONSULTANT INFORMATION FOR CIVIL INFRASTRUCTURE, LOT BOUNDARIES, LANDSCAPE DETAILS, LEVELS AND FALLS.
 VERIFY ALL REFERENCED INFORMATION ON THIS PLAN WITH THE RELEVANT CONSULTANT DRAWINGS AND NOTIFY OF NEW INFORMATION MADE AVAILABLE OR OF ANY DISCREPANCIES.

REFERENCED DRAWINGS:

LANDPARTNERS- BUILT ENVIRONMENT CONSULTANTS
 DETAIL SURVEY
 PLAN REFERENCE BRSS8271-000-3-1

CIVIL- HURLEY CONSULTING ENGINEERS
 CONCEPT BULK EARTHWORKS LAYOUT PLAN
 PLAN REFERENCE C24004A-SK-C100 REVISION B

RPS GROUP
 SITE MASTERPLAN
 PLAN REFERENCE 004868 OXLEY RESIDENTIAL VERSION C



Integrated perspective

Arqus Design Pty Ltd
 ABN 68 135 616 303

Level 2 15 Malt Street
 Fortitude Valley Qld 4006
 PO Box 2455
 New Farm Qld 4005

Registration:
 Nominated Architect: Scott Peabody
 QLD: 2644
 NSW: 9038
 VIC: 800111 (Arqus Design 600035)

mail@arqudesign.com.au Phone 07 3358 0888
 www.arqudesign.com.au Fax 07 3358 0899

Arqus Design acknowledges the Traditional Owners of Country on which we live, work and design and pay our respects to their Elders, past and present.

NOTES
 Contractors are to verify all dimensions on site before commencing any work or producing shop drawings.

These drawings are protected by the laws of copyright and may not be copied or reproduced without the written permission of Arqus Design.

Detail applicable to the scale of the drawing published.

DATE	REVISION	ISSUE
29/05/24	FOR INFORMATION	A
30/05/24	FOR INFORMATION	B
04/07/24	FOR INFORMATION	C
19/07/24	PRELIMINARY DA PACKAGE	D
23/07/24	PRELIMINARY DA PACKAGE-UPDATED	E
31/07/24	SITE PLAN-UPDATE	F
21/08/24	PRELIMINARY DA PACKAGE	G
23/08/24	DA PACKAGE	H
26/09/24	COMMUNAL OPEN SPACE AMENDMENT	I
20/06/25	FOR INFORMATION	J
05/08/25	DA PACKAGE UPDATE	K
06/08/25	DA PACKAGE UPDATE	L
10/09/25	DA PACKAGE UPDATE	M
10/10/25	DA PACKAGE UPDATE	N

CLIENT



PROJECT

OXLEY RESIDENTIAL DEVELOPMENT
 10 HONEYEATER CIRCUIT, OXLEY
 LOT 302 ON SP326512

Country: Yugara & Yugarabul
 DRAWING

SITE PLAN-LEVEL 1

JOB NUMBER	DESIGN	DRAWN	CHECKED
23-0069	SP	KF	AA

SCALE	DATE CREATED	NORTH
1 : 250 @A1 @A3	29/02/24	

DRAWING NUMBER

A1-1-02

ISSUED FOR
DA PACKAGE

ISSUED FOR 10/10/2025 10:11:24 AM

Integrated perspective

Arqus Design Pty Ltd
 ABN 68 135 616 303

Level 2 15 Malt Street
 Fortitude Valley Qld 4006
 PO Box 2455
 New Farm Qld 4005

Registration:
 Nominated Architect: Scott Peabody
 QLD: 2644
 NSW: 9038
 VIC: 800111 (Arqus Design 600035)

mail@arqudesign.com.au Phone 07 3358 0888
 www.arqudesign.com.au Fax 07 3358 0899

Arqus Design acknowledges the Traditional Owners of Country on which we live, work and design and pay our respects to their Elders, past and present.

NOTES

Contractors are to verify all dimensions on site before commencing any work or producing shop drawings.

These drawings are protected by the laws of copyright and may not be copied or reproduced without the written permission of Arqus Design.

Detail applicable to the scale of the drawing published.

DATE	REVISION	ISSUE
29/05/24	FOR INFORMATION	A
30/05/24	FOR INFORMATION	B
04/07/24	FOR INFORMATION	C
19/07/24	PRELIMINARY DA PACKAGE	D
23/07/24	PRELIMINARY DA PACKAGE-UPDATED	E
31/07/24	SITE PLAN-UPDATE	F
21/08/24	PRELIMINARY DA PACKAGE	G
23/08/24	DA PACKAGE	H
26/09/24	COMMUNAL OPEN SPACE AMENDMENT	I
20/06/25	FOR INFORMATION	J
05/08/25	DA PACKAGE UPDATE	K
06/08/25	DA PACKAGE UPDATE	L
10/09/25	DA PACKAGE UPDATE	M
10/10/25	DA PACKAGE UPDATE	N

CLIENT



PROJECT

OXLEY RESIDENTIAL DEVELOPMENT
 10 HONEYEATER CIRCUIT, OXLEY
 LOT 302 ON SP326512

Country: Yugara & Yugarabul
 DRAWING

SITE PLAN-LEVEL 2

JOB NUMBER	DESIGN	DRAWN	CHECKED
23-0069	SP	KF	AA

SCALE	DATE CREATED	NORTH
1 : 250 @A1 @A3	29/02/24	

DRAWING NUMBER

A1-1-03

ISSUED FOR

DA PACKAGE



NOTES:
 REFER REFERENCED DRAWINGS BELOW FOR THE RELEVANT CONSULTANT INFORMATION FOR CIVIL INFRASTRUCTURE, LOT BOUNDARIES, LANDSCAPE DETAILS, LEVELS AND FALLS.
 VERIFY ALL REFERENCED INFORMATION ON THIS PLAN WITH THE RELEVANT CONSULTANT DRAWINGS AND NOTIFY OF NEW INFORMATION MADE AVAILABLE OR OF ANY DISCREPANCIES.

REFERENCED DRAWINGS:

LANDPARTNERS- BUILT ENVIRONMENT CONSULTANTS
 DETAIL SURVEY
 PLAN REFERENCE BRSS8271-000-3-1

CIVIL- HURLEY CONSULTING ENGINEERS
 CONCEPT BULK EARTHWORKS LAYOUT PLAN
 PLAN REFERENCE C24004A-SK-C100 REVISION B

RPS GROUP
 SITE MASTERPLAN
 PLAN REFERENCE 004868 OXLEY RESIDENTIAL VERSION C

Integrated perspective

Arqus Design Pty Ltd
 ABN 68 135 616 303

Level 2 15 Malt Street
 Fortitude Valley Qld 4006
 PO Box 2455
 New Farm Qld 4005

Registration:
 Nominated Architect: Scott Peabody
 QLD: 2644
 NSW: 9038
 VIC: 800111 (Arqus Design 600035)

mail@arqudesign.com.au Phone 07 3358 0888
 www.arqudesign.com.au Fax 07 3358 0899

Arqus Design acknowledges the Traditional Owners of Country on which we live, work and design and pay our respects to their Elders, past and present.

NOTES

Contractors are to verify all dimensions on site before commencing any work or producing shop drawings.

These drawings are protected by the laws of copyright and may not be copied or reproduced without the written permission of Arqus Design.

Detail applicable to the scale of the drawing published.

DATE	REVISION	ISSUE
29/05/24	FOR INFORMATION	A
30/05/24	FOR INFORMATION	B
04/07/24	FOR INFORMATION	C
19/07/24	PRELIMINARY DA PACKAGE	D
23/07/24	PRELIMINARY DA PACKAGE-UPDATED	E
31/07/24	SITE PLAN-UPDATE	F
21/08/24	PRELIMINARY DA PACKAGE	G
23/08/24	DA PACKAGE	H
26/09/24	COMMUNAL OPEN SPACE AMENDMENT	I
20/06/25	FOR INFORMATION	J
05/08/25	DA PACKAGE UPDATE	K
06/08/25	DA PACKAGE UPDATE	L
10/09/25	DA PACKAGE UPDATE	M
10/10/25	DA PACKAGE UPDATE	N

CLIENT



PROJECT

OXLEY RESIDENTIAL DEVELOPMENT
10 HONEYEATER CIRCUIT, OXLEY
LOT 302 ON SP326512

Country: Yugara & Yugarabul
 DRAWING

SITE PLAN-ROOF

JOB NUMBER	DESIGN	DRAWN	CHECKED
23-0069	SP	KF	AA

SCALE	DATE CREATED	NORTH
1:250 @A1 @A3	29/02/24	

DRAWING NUMBER

A1-1-04 **N**

ISSUED FOR

DA PACKAGE



NOTES:
 REFER REFERENCED DRAWINGS BELOW FOR THE RELEVANT CONSULTANT INFORMATION FOR CIVIL INFRASTRUCTURE, LOT BOUNDARIES, LANDSCAPE DETAILS, LEVELS AND FALLS.
 VERIFY ALL REFERENCED INFORMATION ON THIS PLAN WITH THE RELEVANT CONSULTANT DRAWINGS AND NOTIFY OF NEW INFORMATION MADE AVAILABLE OR OF ANY DISCREPANCIES.

REFERENCED DRAWINGS:

LANDPARTNERS- BUILT ENVIRONMENT CONSULTANTS
 DETAIL SURVEY
 PLAN REFERENCE BRSS8271-000-3-1

CIVIL- HURLEY CONSULTING ENGINEERS
 CONCEPT BULK EARTHWORKS LAYOUT PLAN
 PLAN REFERENCE C24004A-SK-C100 REVISION B

RPS GROUP
 SITE MASTERPLAN
 PLAN REFERENCE 004868 OXLEY RESIDENTIAL VERSION C

Integrated perspective

Arqus Design Pty Ltd
 ABN 68 135 616 303

Level 2 15 Malt Street
 Fortitude Valley Qld 4006
 PO Box 2455
 New Farm Qld 4005

Registration:
 Nominated Architect: Scott Peabody
 QLD: 2644
 NSW: 9038
 VIC: 800111 (Arqus Design 600035)

mail@arqudesign.com.au Phone 07 3358 0888
 www.arqudesign.com.au Fax 07 3358 0899

Arqus Design acknowledges the Traditional Owners of Country on which we live, work and design and pay our respects to their Elders, past and present.

NOTES

Contractors are to verify all dimensions on site before commencing any work or producing shop drawings.

These drawings are protected by the laws of copyright and may not be copied or reproduced without the written permission of Arqus Design.

Detail applicable to the scale of the drawing published.

DATE	REVISION	ISSUE
19/07/24	PRELIMINARY DA PACKAGE	A
23/07/24	PRELIMINARY DA PACKAGE-UPDATED	B
21/08/24	PRELIMINARY DA PACKAGE	C
23/08/24	DA PACKAGE	D
26/09/24	COMMUNAL OPEN SPACE AMENDMENT	E
05/08/25	DA PACKAGE UPDATE	F
06/08/25	DA PACKAGE UPDATE	G
10/09/25	DA PACKAGE UPDATE	H
10/10/25	DA PACKAGE UPDATE	I

CLIENT



PROJECT

OXLEY RESIDENTIAL DEVELOPMENT
10 HONEYEATER CIRCUIT, OXLEY
LOT 302 ON SP326512

Country: Yugara & Yugarabul
 DRAWING

OVERALL SITE COVER

JOB NUMBER	DESIGN	DRAWN	CHECKED
23-0069	SP	KF	AA

SCALE	DATE CREATED	NORTH
As indicated @A1 @A3	29/02/24	

DRAWING NUMBER

A1-2-01

ISSUED FOR

DA PACKAGE



SITE COVERAGE

TOTAL BUILDING SITE COVER	4479.44 m ²
TOTAL SITE AREA	9643.236 m ²
SITE COVERAGE	46.45%

Integrated perspective

Arqus Design Pty Ltd
ABN 68 135 616 303

Level 2 15 Malt Street
Fortitude Valley Qld 4006
PO Box 2455
New Farm Qld 4005

Registration:
Nominated Architect: Scott Peabody
QLD: 2644
NSW: 9038
VIC: 800111 (Arqus Design 600035)

mail@arqudesign.com.au Phone 07 3358 0888
www.arqudesign.com.au Fax 07 3358 0899

Arqus Design acknowledges the Traditional Owners of Country on which we live, work and design and pay our respects to their Elders, past and present.

NOTES
Contractors are to verify all dimensions on site before commencing any work or producing shop drawings.

These drawings are protected by the laws of copyright and may not be copied or reproduced without the written permission of Arqus Design.

Detail applicable to the scale of the drawing published.

DATE	REVISION	ISSUE
19/07/24	PRELIMINARY DA PACKAGE	A
23/07/24	PRELIMINARY DA PACKAGE-UPDATED	B
21/08/24	PRELIMINARY DA PACKAGE	C
23/08/24	DA PACKAGE	D
26/09/24	COMMUNAL OPEN SPACE AMENDMENT	E
05/08/25	DA PACKAGE UPDATE	F
06/08/25	DA PACKAGE UPDATE	G
10/09/25	DA PACKAGE UPDATE	H
10/10/25	DA PACKAGE UPDATE	I



1 SITE PLAN - GFA GROUND FLOOR
1 : 500



2 SITE PLAN - GFA LEVEL 1
1 : 500



3 SITE PLAN - GFA LEVEL 2
1 : 500

GROUND GFA		
NAME	AREA	
BUILDING 1		
GFA GROUND 1B	98.16 m ²	
GFA GROUND 2B	96.84 m ²	
GFA GROUND 3B	96.48 m ²	
GFA GROUND 4B	98.17 m ²	
BUILDING 2		
GFA GROUND 5B	97.76 m ²	
GFA GROUND 6B	96.43 m ²	
GFA GROUND 7B	97.84 m ²	
BUILDING 3		
GFA GROUND 8B	95.92 m ²	
GFA GROUND 9B	96.88 m ²	
BUILDING 4		
GFA GROUND 10B	95.40 m ²	
GFA GROUND 11B	99.26 m ²	
GFA GROUND 12B	99.31 m ²	
GFA GROUND 13B	95.70 m ²	
BUILDING 5		
GFA GROUND 14D	58.92 m ²	
GFA GROUND 15D	57.86 m ²	
GFA GROUND 16D	58.77 m ²	
BUILDING 6		
GFA GROUND 17D	58.80 m ²	
GFA GROUND 18D	57.85 m ²	
GFA GROUND 19D	58.75 m ²	
BUILDING 7		
GFA GROUND 20E	59.47 m ²	
GFA GROUND 21E	59.53 m ²	
BUILDING 8		
GFA GROUND 22A	68.77 m ²	
GFA GROUND 23A	68.67 m ²	
GFA GROUND 24A	68.83 m ²	
BUILDING 9		
GFA GROUND 25A	68.88 m ²	
GFA GROUND 26A	68.82 m ²	
BUILDING 10		
GFA GROUND 27A	68.60 m ²	
GFA GROUND 28A	68.89 m ²	
BUILDING 11		
GFA GROUND 29B	96.04 m ²	
GFA GROUND 30B	96.09 m ²	
GFA GROUND 31B	98.25 m ²	
BUILDING 12		
GFA GROUND 32E	59.47 m ²	
GFA GROUND 33E	59.54 m ²	
GFA GROUND 34E	59.52 m ²	
COMMUNITY CENTRE		
GFA COMMUNITY CENTRE GROUND	159.64 m ²	
RESIDENTIAL COMMUNAL FACILITIES		
GFA RESIDENTIAL COMMUNAL FACILITIES GROUND	92.56 m ²	
Grand total	2935.65 m ²	

LVL 01 GFA		
NAME	AREA	
BUILDING 1		
GFA LVL 01 1B	91.31 m ²	
GFA LVL 01 2B	90.27 m ²	
GFA LVL 01 3B	90.65 m ²	
GFA LVL 01 4B	91.19 m ²	
BUILDING 2		
GFA LVL 01 5B	90.08 m ²	
GFA LVL 01 6B	90.56 m ²	
GFA LVL 01 7B	89.83 m ²	
BUILDING 3		
GFA LVL 01 8B	90.41 m ²	
GFA LVL 01 9B	90.52 m ²	
BUILDING 4		
GFA LVL 01 10B	90.68 m ²	
GFA LVL 01 11B	90.32 m ²	
GFA LVL 01 12B	90.73 m ²	
GFA LVL 01 13B	90.29 m ²	
BUILDING 5		
GFA LVL 01 14D	60.82 m ²	
GFA LVL 01 15D	60.52 m ²	
GFA LVL 01 16D	60.81 m ²	
BUILDING 6		
GFA LVL 01 17D	60.82 m ²	
GFA LVL 01 18D	60.52 m ²	
GFA LVL 01 19D	60.81 m ²	
BUILDING 7		
GFA LVL 01 20E	61.17 m ²	
GFA LVL 01 21E	61.16 m ²	
BUILDING 8		
GFA LVL 01 22A	90.35 m ²	
GFA LVL 01 23A	90.47 m ²	
GFA LVL 01 24A	90.21 m ²	
BUILDING 9		
GFA LVL 01 25A	90.36 m ²	
GFA LVL 01 26A	90.35 m ²	
BUILDING 10		
GFA LVL 01 27A	90.35 m ²	
GFA LVL 01 28A	90.36 m ²	
BUILDING 11		
GFA LVL 01 29B	90.33 m ²	
GFA LVL 01 30B	90.27 m ²	
GFA LVL 01 31B	90.40 m ²	
BUILDING 12		
GFA LVL 01 32E	61.05 m ²	
GFA LVL 01 33E	60.46 m ²	
GFA LVL 01 34E	61.12 m ²	
Grand total	2749.56 m ²	

LVL 02 GFA		
NAME	AREA	
BUILDING 5		
GFA LVL 02 14D	78.79 m ²	
GFA LVL 02 15D	79.09 m ²	
GFA LVL 02 16D	78.86 m ²	
BUILDING 6		
GFA LVL 02 17D	78.79 m ²	
GFA LVL 02 18D	78.96 m ²	
GFA LVL 02 19D	78.86 m ²	
BUILDING 7		
GFA LVL 02 20E	78.50 m ²	
GFA LVL 02 21E	78.28 m ²	
BUILDING 12		
GFA LVL 02 32E	78.27 m ²	
GFA LVL 02 33E	77.84 m ²	
GFA LVL 02 34E	78.47 m ²	
Grand total	864.73 m ²	

TOTAL GFA	
TOTAL GFA	6,560.56 m ²

CLIENT
HONEYCOMBES PROPERTY GROUP

PROJECT
**OXLEY RESIDENTIAL DEVELOPMENT
10 HONEYEATER CIRCUIT, OXLEY
LOT 302 ON SP326512**

Country: Yugara & Yugarabul
DRAWING

GFA SCHEDULE

JOB NUMBER	DESIGN	DRAWN	CHECKED
23-0069	SP	KF	AA

SCALE	DATE CREATED	NORTH
As indicated @A1 @A3	29/02/24	

DRAWING NUMBER
A1-2-02

ISSUED FOR
DA PACKAGE

Integrated perspective

Arqus Design Pty Ltd
 ABN 68 135 616 303

Level 2 15 Malt Street
 Fortitude Valley Qld 4006
 PO Box 2455
 New Farm Qld 4005

Registration:
 Nominated Architect: Scott Peabody
 QLD: 2644
 NSW: 9038
 VIC: 800111 (Arqus Design 600035)

mail@arqudesign.com.au Phone 07 3358 0888
 www.arqudesign.com.au Fax 07 3358 0899

Arqus Design acknowledges the Traditional Owners of Country on which we live, work and design and pay our respects to their Elders, past and present.

NOTES

Contractors are to verify all dimensions on site before commencing any work or producing shop drawings.

These drawings are protected by the laws of copyright and may not be copied or reproduced without the written permission of Arqus Design.

Detail applicable to the scale of the drawing published.

DATE	REVISION	ISSUE
29/05/24	SITE PLAN- COMMUNAL OPEN SPACE	A
30/05/24	FOR INFORMATION	B
21/08/24	PRELIMINARY DA PACKAGE	C
23/08/24	DA PACKAGE	D
26/09/24	COMMUNAL OPEN SPACE AREA AMENDMENT	E
26/09/24	COMMUNAL OPEN SPACE AMENDMENT	F
27/09/24	COMMUNAL OPEN SPACE AMENDMENT	G
17/10/24	FOR INFORMATION	H
06/08/25	DA PACKAGE UPDATE	I
10/09/25	DA PACKAGE UPDATE	J
10/10/25	DA PACKAGE UPDATE	K



2 AREA CALCULATION- COMMUNAL OPEN SPACE
 1 : 1000

OPEN SPACE LEGEND	
	COMMUNAL OPEN SPACE

PERCENTAGE COMMUNAL OPEN SPACE	
SITE AREA	8681.78 M²
COMMUNAL OPEN SPACE	1382.88 M²
COMMUNAL OPEN SPACE & COMMUNITY CENTRE	16%

COMMUNAL OPEN SPACE m2

NAME	AREA
COMMUNAL OPEN SPACE	1356.14 m²
COMMUNAL OPEN SPACE	26.75 m²
TOTAL	1382.88 m²



CLIENT



PROJECT

OXLEY RESIDENTIAL DEVELOPMENT
10 HONEYEATER CIRCUIT, OXLEY
LOT 302 ON SP326512

Country: Yugara & Yugarabul
 DRAWING

SITE PLAN-COMMUNAL OPEN SPACE EXCLUDING COMMUNITY CENTRE

JOB NUMBER	DESIGN	DRAWN	CHECKED
23-0069	SP	KF	AA

SCALE	DATE CREATED	NORTH
As indicated @A3	29/02/24	

DRAWING NUMBER **A1-2-03** ISSUE **K**

ISSUED FOR **DA PACKAGE**

Integrated perspective

Arqus Design Pty Ltd
 ABN 68 135 616 303

Level 2 15 Malt Street
 Fortitude Valley Qld 4006
 PO Box 2455
 New Farm Qld 4005

Registration:
 Nominated Architect: Scott Peabody
 QLD: 2644
 NSW: 9038
 VIC: 800111 (Arqus Design 600035)

mail@arqudesign.com.au Phone 07 3358 0888
 www.arqudesign.com.au Fax 07 3358 0899

Arqus Design acknowledges the Traditional Owners of Country on which we live, work and design and pay our respects to their Elders, past and present.

NOTES

Contractors are to verify all dimensions on site before commencing any work or producing shop drawings.

These drawings are protected by the laws of copyright and may not be copied or reproduced without the written permission of Arqus Design.

Detail applicable to the scale of the drawing published.

DATE	REVISION	ISSUE
28/05/24	SITE PLAN- COMMUNAL & PRIVATE OPEN SPACE	A
30/05/24	FOR INFORMATION	B
19/07/24	PRELIMINARY DA PACKAGE	C
23/07/24	PRELIMINARY DA PACKAGE-UPDATED	D
21/08/24	PRELIMINARY DA PACKAGE	E
23/08/24	DA PACKAGE	F
26/09/24	COMMUNAL OPEN SPACE AMENDMENT	G
05/08/25	DA PACKAGE UPDATE	H
06/08/25	DA PACKAGE UPDATE	I
10/09/25	DA PACKAGE UPDATE	J
10/10/25	DA PACKAGE UPDATE	K



2 PRIVATE OPEN SPACE- GROUND FLOOR
 1:500

PRIVATE OPEN SPACE

Name	Area
------	------

BUILDING 1	
PRIVATE OPEN SPACE-UNIT 1B	40.89 m ²
PRIVATE OPEN SPACE-UNIT 2B	36.03 m ²
PRIVATE OPEN SPACE-UNIT 3B	35.93 m ²
PRIVATE OPEN SPACE-UNIT 4B	42.75 m ²
BUILDING 2	
PRIVATE OPEN SPACE-UNIT 5B	67.43 m ²
PRIVATE OPEN SPACE-UNIT 6B	46.61 m ²
PRIVATE OPEN SPACE-UNIT 7B	53.70 m ²
BUILDING 3	
PRIVATE OPEN SPACE-UNIT 8B	49.72 m ²
PRIVATE OPEN SPACE-UNIT 9B	45.82 m ²
BUILDING 4	
PRIVATE OPEN SPACE-UNIT 10B	49.90 m ²
PRIVATE OPEN SPACE-UNIT 11B	45.06 m ²
PRIVATE OPEN SPACE-UNIT 12B	45.25 m ²
PRIVATE OPEN SPACE-UNIT 13B	49.18 m ²
BUILDING 5	
PRIVATE OPEN SPACE-UNIT 14D	26.23 m ²
PRIVATE OPEN SPACE-UNIT 15D	21.92 m ²
PRIVATE OPEN SPACE-UNIT 16D	26.47 m ²
BUILDING 6	
PRIVATE OPEN SPACE-UNIT 17D	26.73 m ²
PRIVATE OPEN SPACE-UNIT 18D	22.11 m ²
PRIVATE OPEN SPACE-UNIT 19D	26.80 m ²
BUILDING 7	
PRIVATE OPEN SPACE-UNIT 20E	17.45 m ²
PRIVATE OPEN SPACE-UNIT 21E	17.04 m ²
BUILDING 8	
PRIVATE OPEN SPACE-UNIT 22A	28.07 m ²
PRIVATE OPEN SPACE-UNIT 23A	23.56 m ²
PRIVATE OPEN SPACE-UNIT 24A	25.38 m ²
BUILDING 9	
PRIVATE OPEN SPACE-UNIT 25A	27.50 m ²
PRIVATE OPEN SPACE-UNIT 26A	25.39 m ²
BUILDING 10	
PRIVATE OPEN SPACE-UNIT 27A	29.96 m ²
PRIVATE OPEN SPACE-UNIT 28A	29.96 m ²
BUILDING 11	
PRIVATE OPEN SPACE-UNIT 29B	29.30 m ²
PRIVATE OPEN SPACE-UNIT 30B	24.83 m ²
PRIVATE OPEN SPACE-UNIT 31B	29.18 m ²
BUILDING 12	
PRIVATE OPEN SPACE-UNIT 32E	17.43 m ²
PRIVATE OPEN SPACE-UNIT 33E	14.34 m ²
PRIVATE OPEN SPACE-UNIT 34E	17.48 m ²
TOTAL	1115.40 m ²



1 PRIVATE OPEN SPACE- LEVEL 1
 1:500

PRIVATE OPEN SPACE LEVEL 1

Name	Area
------	------

BUILDING 1	
PRIVATE OPEN SPACE LEVEL 1 - UNIT 1B	6.16 m ²
PRIVATE OPEN SPACE LEVEL 1 - UNIT 2B	12.10 m ²
PRIVATE OPEN SPACE LEVEL 1 - UNIT 3B	6.16 m ²
PRIVATE OPEN SPACE LEVEL 1 - UNIT 4B	12.09 m ²
BUILDING 2	
PRIVATE OPEN SPACE LEVEL 1 - UNIT 6B	12.84 m ²
PRIVATE OPEN SPACE LEVEL 1 - UNIT 7B	12.90 m ²
BUILDING 3	
PRIVATE OPEN SPACE LEVEL 1 - UNIT 8B	12.19 m ²
PRIVATE OPEN SPACE LEVEL 1 - UNIT 9B	12.04 m ²
BUILDING 4	
PRIVATE OPEN SPACE LEVEL 1 - UNIT 10B	12.29 m ²
PRIVATE OPEN SPACE LEVEL 1 - UNIT 11B	12.07 m ²
PRIVATE OPEN SPACE LEVEL 1 - UNIT 12B	12.10 m ²
PRIVATE OPEN SPACE LEVEL 1 - UNIT 13B	12.00 m ²
BUILDING 5	
PRIVATE OPEN SPACE LEVEL 1 - UNIT 14D	8.15 m ²
PRIVATE OPEN SPACE LEVEL 1 - UNIT 14D	12.38 m ²
PRIVATE OPEN SPACE LEVEL 1 - UNIT 15D	8.15 m ²
PRIVATE OPEN SPACE LEVEL 1 - UNIT 15D	12.38 m ²
PRIVATE OPEN SPACE LEVEL 1 - UNIT 16D	8.15 m ²
PRIVATE OPEN SPACE LEVEL 1 - UNIT 16D	12.51 m ²
BUILDING 6	
PRIVATE OPEN SPACE LEVEL 1 - UNIT 17D	8.12 m ²
PRIVATE OPEN SPACE LEVEL 1 - UNIT 17D	12.39 m ²
PRIVATE OPEN SPACE LEVEL 1 - UNIT 18D	8.15 m ²
PRIVATE OPEN SPACE LEVEL 1 - UNIT 18D	12.39 m ²
PRIVATE OPEN SPACE LEVEL 1 - UNIT 19D	8.17 m ²
PRIVATE OPEN SPACE LEVEL 1 - UNIT 19D	12.51 m ²
BUILDING 7	
PRIVATE OPEN SPACE LEVEL 1 - UNIT 20E	12.33 m ²
PRIVATE OPEN SPACE LEVEL 1 - UNIT 20E	6.41 m ²
PRIVATE OPEN SPACE LEVEL 1 - UNIT 21E	12.30 m ²
PRIVATE OPEN SPACE LEVEL 1 - UNIT 21E	6.23 m ²
BUILDING 12	
PRIVATE OPEN SPACE LEVEL 1 - UNIT 32E	12.30 m ²
PRIVATE OPEN SPACE LEVEL 1 - UNIT 32E	6.63 m ²
PRIVATE OPEN SPACE LEVEL 1 - UNIT 33E	12.36 m ²
PRIVATE OPEN SPACE LEVEL 1 - UNIT 33E	6.46 m ²
PRIVATE OPEN SPACE LEVEL 1 - UNIT 34E	12.37 m ²
PRIVATE OPEN SPACE LEVEL 1 - UNIT 34E	6.45 m ²
TOTAL	352.24 m ²

OPEN SPACE LEGEND

PRIVATE OPEN SPACE

PERCENTAGE PRIVATE OPEN SPACE PER TYPE

TYPE A	12.95%
TYPE B	56.28%
TYPE D	18.67%
TYPE E	12.12%

NOTE: PRIVATE OPEN SPACE % BASE ON INDIVIDUAL FOOTPRINT PER UNIT TYPE

CLIENT



PROJECT

OXLEY RESIDENTIAL DEVELOPMENT
10 HONEYEATER CIRCUIT, OXLEY
LOT 302 ON SP326512

Country: Yugara & Yugarabul

DRAWING

SITE PLAN-PRIVATE OPEN SPACE

JOB NUMBER	DESIGN	DRAWN	CHECKED
23-0069	SP	ZC	SP

SCALE	DATE CREATED	NORTH
As indicated @A3	29/02/24	

DRAWING NUMBER	ISSUE
A1-2-04	K

ISSUED FOR
DA PACKAGE

Integrated perspective

Arqus Design Pty Ltd
 ABN 68 135 616 303

Level 2 15 Malt Street
 Fortitude Valley Qld 4006
 PO Box 2455
 New Farm Qld 4005

Registration:
 Nominated Architect: Scott Peabody
 QLD: 2644
 NSW: 9038
 VIC: 800111 (Arqus Design 600035)

mail@arqudesign.com.au Phone 07 3358 0888
 www.arqudesign.com.au Fax 07 3358 0899

Arqus Design acknowledges the Traditional Owners of Country on which we live, work and design and pay our respects to their Elders, past and present.

NOTES

Contractors are to verify all dimensions on site before commencing any work or producing shop drawings.

These drawings are protected by the laws of copyright and may not be copied or reproduced without the written permission of Arqus Design.

Detail applicable to the scale of the drawing published.

DATE	REVISION	ISSUE
30/05/24	FOR INFORMATION	A
19/07/24	PRELIMINARY DA PACKAGE	B
23/07/24	PRELIMINARY DA PACKAGE-UPDATED	C
21/08/24	PRELIMINARY DA PACKAGE	D
23/08/24	DA PACKAGE	E
05/08/25	DA PACKAGE UPDATE	F
06/08/25	DA PACKAGE UPDATE	G
10/09/25	DA PACKAGE UPDATE	H
10/10/25	DA PACKAGE UPDATE	I



1 BUILDING TYPES LAYOUT
 1:500

UNIT TYPES		
	TYPE A TWO STOREY, 3 BED, + MPR	6
	TYPE A TWO STOREY, 4 BED	1
	TYPE B TWO STOREY, 3 BED, + MPR	13
	TYPE B TWO STOREY, 4 BED	3
	TYPE D THREE STOREY, 3 BED, + MPR	6
	TYPE E THREE STOREY, 3 BED, + MPR	5
		34



2 BUILDING GOLD & SILVER
 1:500

UNIT CLASSIFICATION		
	SILVER LEVEL (34 UNITS)	100 %

CLIENT



PROJECT

OXLEY RESIDENTIAL DEVELOPMENT
10 HONEYEATER CIRCUIT, OXLEY
LOT 302 ON SP326512

Country: Yugara & Yugarabul
 DRAWING

BUILDING TYPES LAYOUT

JOB NUMBER	DESIGN	DRAWN	CHECKED
23-0069	SP	KF	AA

SCALE	DATE CREATED	NORTH
As indicated @A3	29/02/24	

DRAWING NUMBER	ISSUE
A1-2-05	I

ISSUED FOR
DA PACKAGE



1 SITE PLAN - GROUND FLOOR - DEEP PLANTING
1:250

DEEP PLANTING LEGEND

- RESIDENTIAL PRECINCT - DEEP PLANTING
- DEEP PLANTING (TURF IN NATURAL GROUND CONTIGUOUS ITH DEEP PLANTING)
- DEEP PLANTING (SUPPORTIVE PLANTING)
- COMMUNITY PRECINCT - DEEP PLANTING

RESIDENTIAL PRECINCT DEEP PLANTING AREA

NAME	AREA
DEEP PLANTING	524.24 m ²
DEEP PLANTING (SUPPORTIVE PLANTING)	26.75 m ²
LAWN (TURF IN NATURAL GROUND CONTIGUOUS WITH DEEP PLANTING)	409.41 m ²
TOTAL	960.39 m²

COMMUNITY CENTRE PRECINCT DEEP PLANTING AREA

NAME	AREA
DEEP PLANTING (SUPPORTIVE PLANTING)	61.27 m ²
DEEP PLANTING - REC	65.75 m ²
TOTAL	127.02 m²

RESIDENTIAL PRECINCT - DEEP PLANTING AREA

SITE AREA (RESIDENTIAL PRECINCT)	8681.78 m ²	
DEEP PLANTING	526.67 m ²	6% OF SITE AREA
DEEP PLANTING (SUPPORTIVE)	26.75 m ²	0.3% OF SITE AREA
LAWN (TURF IN NATURAL GROUND CONTIGUOUS WITH DEEP PLANTING)	409.41 m ²	4.7% OF SITE AREA

COMMUNITY CENTRE PRECINCT DEEP PLANTING AREA

SITE AREA (COMMUNITY PRECINCT)	961.452 m ²	
DEEP PLANTING (SUPPORTIVE)	64.49 m ²	6.7% OF SITE AREA
DEEP PLANTING	85.54 m ²	8% OF SITE AREA

TOTAL SITE DEEP PLANTING AREA

SITE AREA TOTAL (OVERALL)	9 643.232 m ²	
TOTAL DEEP PLANTING (SUPPORTIVE)	91.24 m ²	4.7% OF SITE AREA
TOTAL DEEP PLANTING	612.21 m ²	6% OF SITE AREA
TOTAL DEEP PLANTING OVERALL SITE	703.45 m²	7% OF SITE AREA



Integrated perspective

Arqus Design Pty Ltd
ABN 68 135 616 303

Level 2 15 Malt Street
Fortitude Valley Qld 4006
PO Box 2455
New Farm Qld 4005

Registration:
Nominated Architect: Scott Peabody
QLD: 2644
NSW: 9038
VIC: 800111 (Arqus Design 600035)

mail@arqudesign.com.au Phone 07 3358 0888
www.arqudesign.com.au Fax 07 3358 0899

Arqus Design acknowledges the Traditional Owners of Country on which we live, work and design and pay our respects to their Elders, past and present.

NOTES

Contractors are to verify all dimensions on site before commencing any work or producing shop drawings.

These drawings are protected by the laws of copyright and may not be copied or reproduced without the written permission of Arqus Design.

Detail applicable to the scale of the drawing published.

DATE	REVISION	ISSUE
14/10/24	FOR INFORMATION	A
17/10/24	FOR INFORMATION	B
05/08/25	DA PACKAGE UPDATE	C
06/08/25	DA PACKAGE UPDATE	D
10/09/25	DA PACKAGE UPDATE	E
10/10/25	DA PACKAGE UPDATE	F

CLIENT



PROJECT

OXLEY RESIDENTIAL DEVELOPMENT
10 HONEYEATER CIRCUIT, OXLEY
LOT 302 ON SP326512

Country: Yugara & Yugarabul

DRAWING

SITE PLAN-DEEP PLANTING

JOB NUMBER	DESIGN	DRAWN	CHECKED
23-0069	SP	GS	SP

SCALE	DATE CREATED	NORTH
As indicated @A3	14/10/2024	

DRAWING NUMBER	ISSUE
A1-2-06	F

ISSUED FOR
DA PACKAGE

Integrated perspective

Arqus Design Pty Ltd
 ABN 68 135 616 303

Level 2 15 Malt Street
 Fortitude Valley Qld 4006
 PO Box 2455
 New Farm Qld 4005

Registration:
 Nominated Architect: Scott Peabody
 QLD: 2644
 NSW: 9038
 VIC: 800111 (Arqus Design 600035)

mail@arqudesign.com.au Phone 07 3358 0888
 www.arqudesign.com.au Fax 07 3358 0899

Arqus Design acknowledges the Traditional Owners of Country on which we live, work and design and pay our respects to their Elders, past and present.

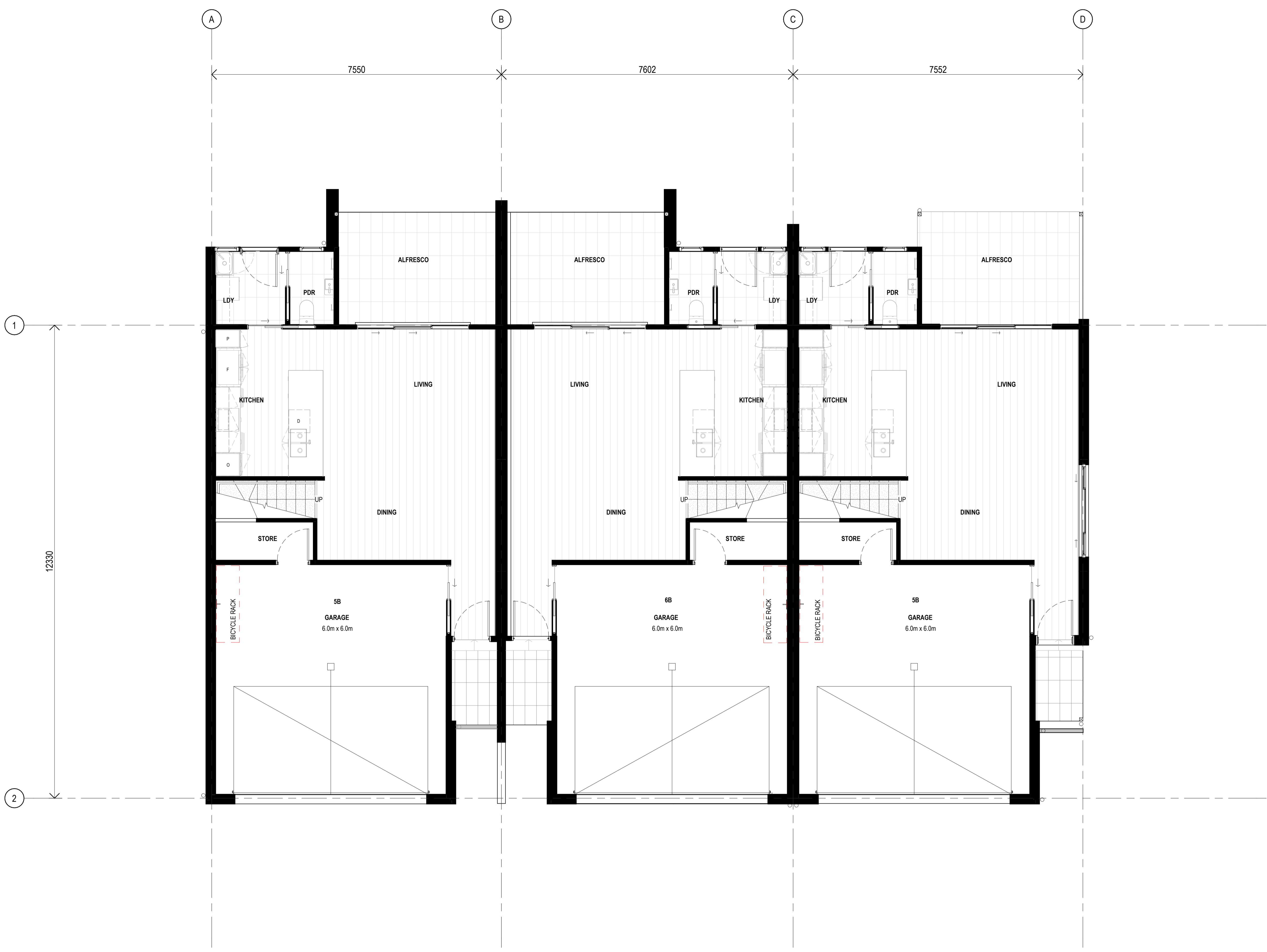
NOTES

Contractors are to verify all dimensions on site before commencing any work or producing shop drawings.

These drawings are protected by the laws of copyright and may not be copied or reproduced without the written permission of Arqus Design.

Detail applicable to the scale of the drawing published.

DATE	REVISION	ISSUE
30/05/24	FOR INFORMATION	A
19/17/24	PRELIMINARY DA PACKAGE	B
21/08/24	PRELIMINARY DA PACKAGE	C
23/08/24	DA PACKAGE	D
10/10/25	DA PACKAGE UPDATE	E



1 GROUND FLOOR - GA PLAN
 A5-2-03 1:50

CLIENT



PROJECT

OXLEY RESIDENTIAL DEVELOPMENT
 10 HONEYEATER CIRCUIT, OXLEY
 LOT 302 ON SP326512

Country: Yugara & Yugarabul

DRAWING

BUILDING 2-GENERAL
ARRANGEMENT - TYPE B-UNIT 5, 6 & 7
- GROUND FLOOR

JOB NUMBER	DESIGN	DRAWN	CHECKED
23-0069	SP	KF	AA

SCALE	DATE CREATED	NORTH
1:50 @A1	12/03/24	
1:200 @A3		

DRAWING NUMBER

A5-1-01 **E**

ISSUED FOR

DA PACKAGE

Integrated perspective

Arqus Design Pty Ltd
 ABN 68 135 616 303
 Level 2 15 Malt Street
 Fortitude Valley Qld 4006
 PO Box 2455
 New Farm Qld 4005

Registration:
 Nominated Architect: Scott Peabody
 QLD: 2644
 NSW: 9038
 VIC: 800111 (Arqus Design 600035)

mail@arqudesign.com.au Phone 07 3358 0888
 www.arqudesign.com.au Fax 07 3358 0899

Arqus Design acknowledges the Traditional Owners of Country on which we live, work and design and pay our respects to their Elders, past and present.

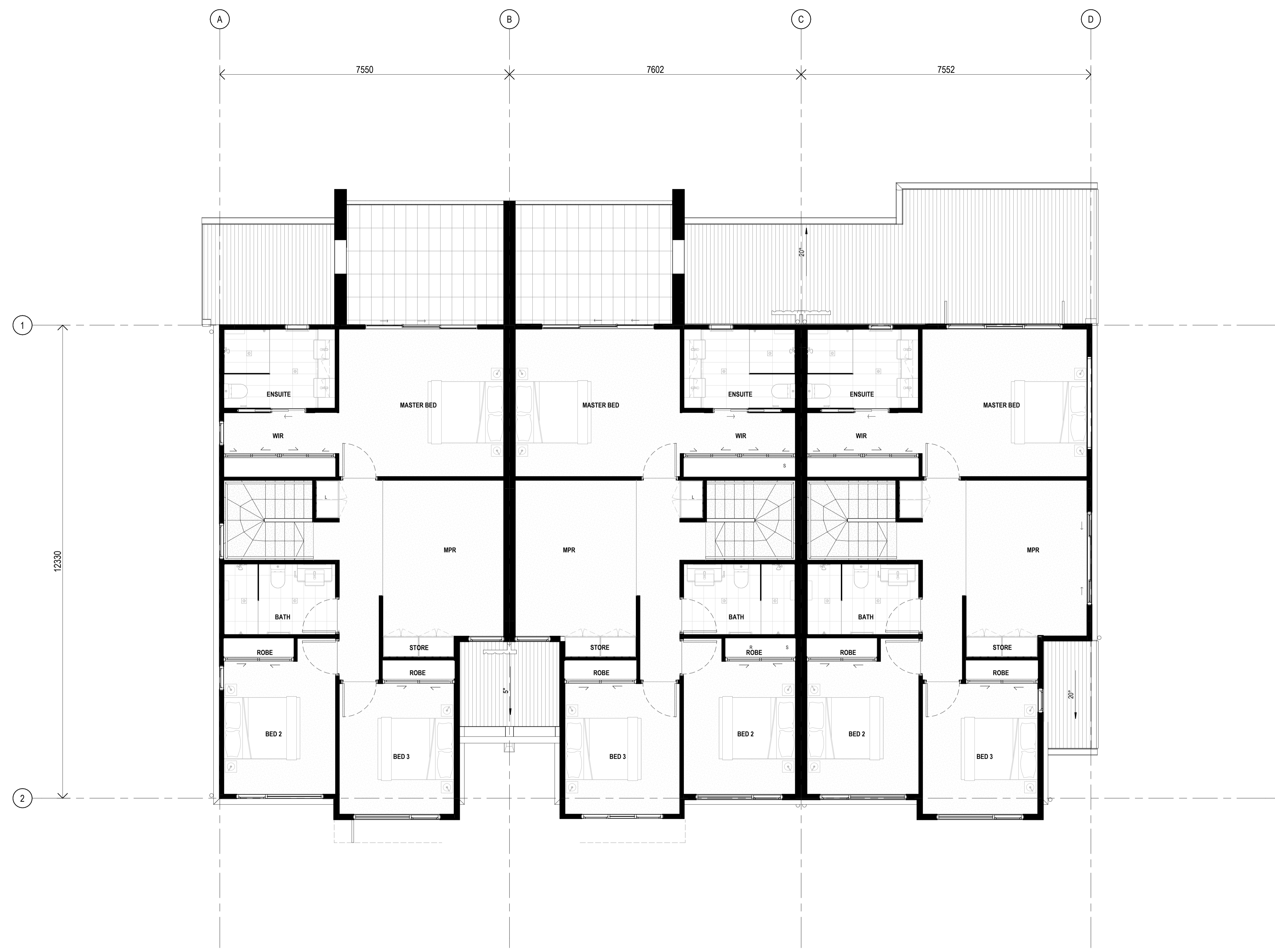
NOTES

Contractors are to verify all dimensions on site before commencing any work or producing shop drawings.

These drawings are protected by the laws of copyright and may not be copied or reproduced without the written permission of Arqus Design.

Detail applicable to the scale of the drawing published.

DATE	REVISION	ISSUE
30/05/24	FOR INFORMATION	A
19/17/24	PRELIMINARY DA PACKAGE	B
21/08/24	PRELIMINARY DA PACKAGE	C
23/08/24	DA PACKAGE	D
10/10/25	DA PACKAGE UPDATE	E



1 LEVEL 01 - GA PLAN
 A5-2-03 1:50

CLIENT



PROJECT

OXLEY RESIDENTIAL DEVELOPMENT
 10 HONEYEATER CIRCUIT, OXLEY
 LOT 302 ON SP326512

Country: Yugara & Yugarabul
 DRAWING

BUILDING 2-GENERAL
ARRANGEMENT - TYPE B-UNIT 5, 6 & 7
- LEVEL 1

JOB NUMBER	DESIGN	DRAWN	CHECKED
23-0069	SP	KF	AA

SCALE	DATE CREATED	NORTH
1:50 @A1	12/03/24	
1:200 @A3		

DRAWING NUMBER

A5-1-02

ISSUE

E

ISSUED FOR

DA PACKAGE

Integrated perspective

Arqus Design Pty Ltd
 ABN 68 135 616 303
 Level 2 15 Malt Street
 Fortitude Valley Qld 4006
 PO Box 2455
 New Farm Qld 4005

Registration:
 Nominated Architect: Scott Peabody
 QLD: 2644
 NSW: 9038
 VIC: 800111 (Arqus Design 600035)

mail@arqudesign.com.au Phone 07 3358 0888
 www.arqudesign.com.au Fax 07 3358 0899

Arqus Design acknowledges the Traditional Owners of Country on which we live, work and design and pay our respects to their Elders, past and present.

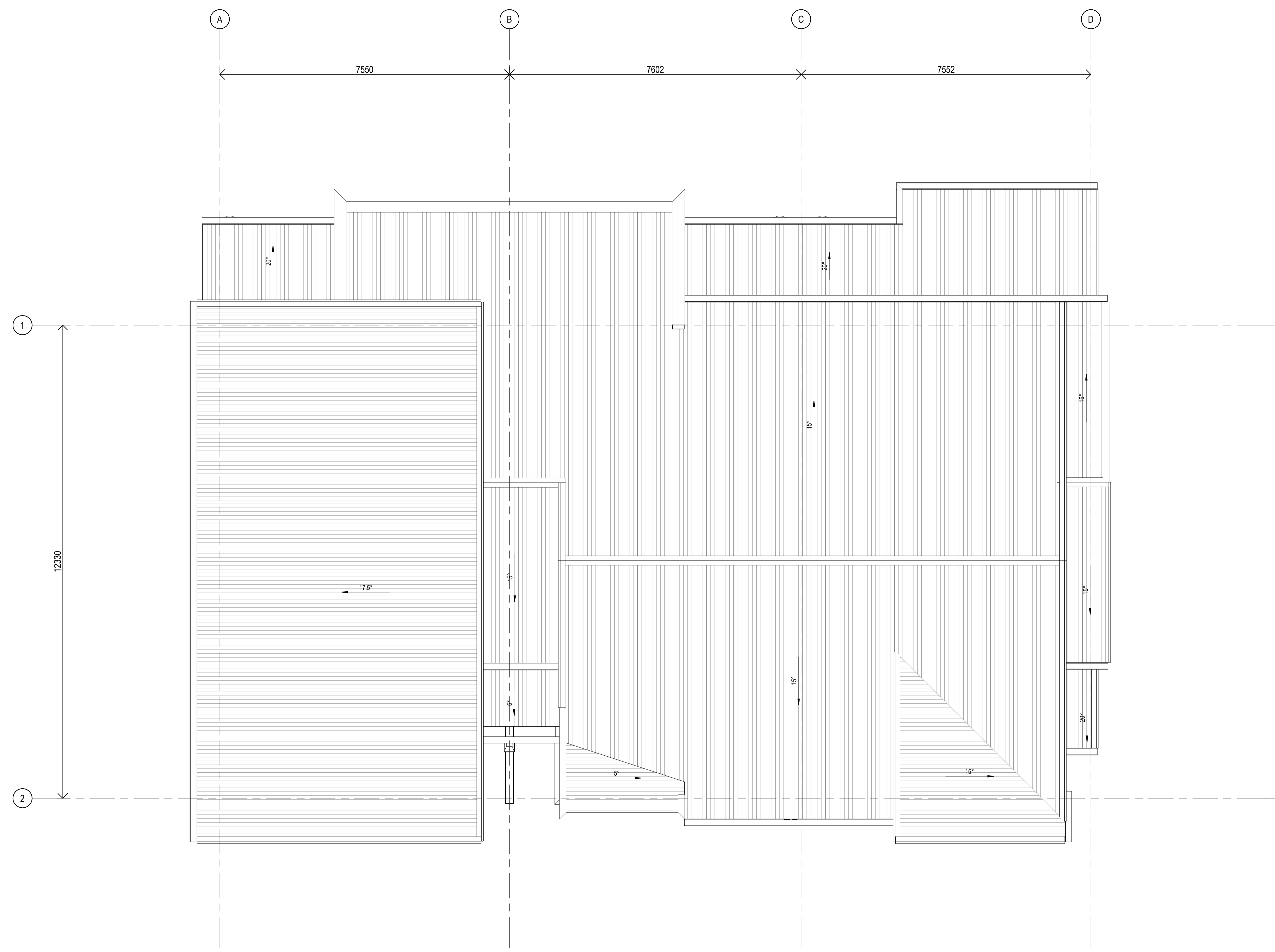
NOTES

Contractors are to verify all dimensions on site before commencing any work or producing shop drawings.

These drawings are protected by the laws of copyright and may not be copied or reproduced without the written permission of Arqus Design.

Detail applicable to the scale of the drawing published.

DATE	REVISION	ISSUE
30/05/24	FOR INFORMATION	A
19/17/24	PRELIMINARY DA PACKAGE	B
21/08/24	PRELIMINARY DA PACKAGE	C
23/08/24	DA PACKAGE	D
10/10/25	DA PACKAGE UPDATE	E



1 ROOF PLAN
 A5-2-03 1:50

CLIENT



PROJECT

OXLEY RESIDENTIAL DEVELOPMENT
 10 HONEYEATER CIRCUIT, OXLEY
 LOT 302 ON SP326512

Country: Yugara & Yugarabul

DRAWING

BUILDING 2-GENERAL
ARRANGEMENT - TYPE B-UNIT 5, 6 & 7
- ROOF PLAN

JOB NUMBER	DESIGN	DRAWN	CHECKED
23-0069	SP	KF	AA

SCALE	DATE CREATED	NORTH
1:50 @A1	12/03/24	
1:200 @A3		

DRAWING NUMBER

A5-1-03 **E**

ISSUED FOR

DA PACKAGE

Integrated perspective

Arqus Design Pty Ltd
 ABN 68 135 616 303

Level 2 15 Malt Street
 Fortitude Valley Qld 4006
 PO Box 2455
 New Farm Qld 4005

Registration:
 Nominated Architect: Scott Peabody
 QLD: 2644
 NSW: 9038
 VIC: 800111 (Arqus Design 600035)

mail@arqudesign.com.au Phone 07 3358 0888
 www.arqudesign.com.au Fax 07 3358 0899

Arqus Design acknowledges the Traditional Owners of Country on which we live, work and design and pay our respects to their Elders, past and present.

NOTES

Contractors are to verify all dimensions on site before commencing any work or producing shop drawings.

These drawings are protected by the laws of copyright and may not be copied or reproduced without the written permission of Arqus Design.

Detail applicable to the scale of the drawing published.

DATE	REVISION	ISSUE
30/05/24	FOR INFORMATION	A
19/17/24	PRELIMINARY DA PACKAGE	B
21/08/24	PRELIMINARY DA PACKAGE	C
23/08/24	DA PACKAGE	D
10/10/25	DA PACKAGE UPDATE	E



1 NORTH ELEVATION COLOURED
 A1-3-01/ 1:50

ID	IMAGE	DESCRIPTION
1A		<varies> FINE TEXTURE CLADDING WITH SNOWY MOUNTAIN HALF PAINT
1B		FINE TEXTURE CLADDING WITH NARROW NECK HALF PAINT
1L		FINE TEXTURE CLADDING WITH DRIVE TIME PAINT
2A		LINEA WEATHERBOARD CLADDING WITH SNOWY MOUNTAINS HALF PAINT
2J		LINEA WEATHERBOARD CLADDING WITH SIMONE WEIL PAINT
3A		AXON CLADDING WITH SNOWY MOUNTAINS HALF PAINT
5B		RENDERED WALL WITH NARROW NECK PAINT
5L		RENDERED WALL WITH DRIVE TIME PAINT
10		METAL ROOF SHEETING WITH COLORBOND SURFMIST
13		DOOR WITH PAINTED COLORBOND BASALT
14		POWDERCOAT WINDOW AND DOOR FRAMING WITH COLORBOND MONUMENT
15		DOOR WITH TIMBER NORDIK OAK
16		DOOR WITH TIMBER FINISH SILVER WATTLE



2 SOUTH ELEVATION COLOURED
 A1-3-01/ 1:50

NOTES:
 SURROUNDING EXTERNAL WORK (INCLUDING ROADS, BUILDING PADS, AND LANDSCAPE AREAS) IS NOT SHOWN FOR CLARITY OF BUILDING ELEVATIONS. REFER TO SITE PLANS, CIVIL, AND LANDSCAPE DRAWING FOR DETAILS.

CLIENT



PROJECT

OXLEY RESIDENTIAL DEVELOPMENT
10 HONEYEATER CIRCUIT, OXLEY
LOT 302 ON SP326512

Country: Yugara & Yugarabul

DRAWING
BUILDING 2 - TYPE B-UNIT 5, 6 & 7
-COLOURED ELEVATIONS

JOB NUMBER DESIGN DRAWN CHECKED
 23-0069 SP KF AA

SCALE DATE CREATED NORTH
 1:50 @A1 12/03/24
 @A3

DRAWING NUMBER ISSUE
A5-2-03 E

ISSUED FOR
DA PACKAGE

Integrated perspective

Arqus Design Pty Ltd
 ABN 68 135 616 303

Level 2 15 Malt Street
 Fortitude Valley Qld 4006
 PO Box 2455
 New Farm Qld 4005

Registration:
 Nominated Architect: Scott Peabody
 QLD: 2644
 NSW: 9038
 VIC: 800111 (Arqus Design 600035)

mail@arquusdesign.com.au Phone 07 3358 0888
 www.arquusdesign.com.au Fax 07 3358 0899

Arqus Design acknowledges the Traditional Owners of Country on which we live, work and design and pay our respects to their Elders, past and present.

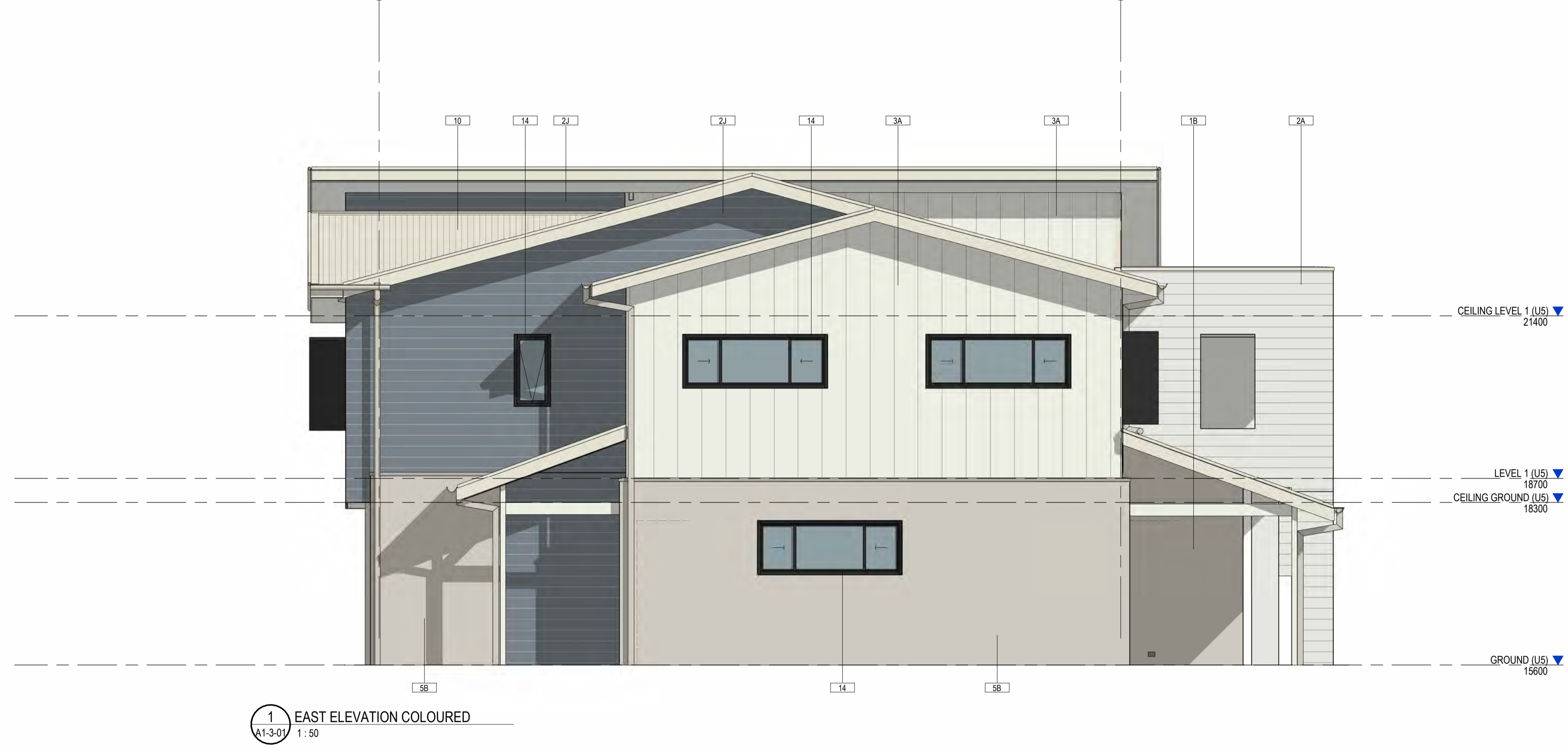
NOTES

Contractors are to verify all dimensions on site before commencing any work or producing shop drawings.

These drawings are protected by the laws of copyright and may not be copied or reproduced without the written permission of Arqus Design.

Detail applicable to the scale of the drawing published.

DATE	REVISION	ISSUE
30/05/24	FOR INFORMATION	A
19/17/24	PRELIMINARY DA PACKAGE	B
21/08/24	PRELIMINARY DA PACKAGE	C
23/08/24	DA PACKAGE	D
10/10/25	DA PACKAGE UPDATE	E



ID	IMAGE	DESCRIPTION
<varies>		
1A		FINE TEXTURE CLADDING WITH SNOWY MOUNTAIN HALF PAINT
1B		FINE TEXTURE CLADDING WITH NARROW NECK HALF PAINT
1L		FINE TEXTURE CLADDING WITH DRIVE TIME PAINT
2A		LINEA WEATHERBOARD CLADDING WITH SNOWY MOUNTAINS HALF PAINT
2J		LINEA WEATHERBOARD CLADDING WITH SIMONE WEIL PAINT
3A		AXON CLADDING WITH SNOWY MOUNTAINS HALF PAINT
5B		RENDERED WALL WITH NARROW NECK PAINT
5L		RENDERED WALL WITH DRIVE TIME PAINT
10		METAL ROOF SHEETING WITH COLORBOND SURFMIST
13		DOOR WITH PAINTED COLORBOND BASALT
14		POWDERCOAT WINDOW AND DOOR FRAMING WITH COLORBOND MONUMENT
15		DOOR WITH TIMBER NORDIK OAK
16		DOOR WITH TIMBER FINISH SILVER WATTLE

NOTES:
 SURROUNDING EXTERNAL WORK (INCLUDING ROADS, BUILDING PADS, AND LANDSCAPE AREAS) IS NOT SHOWN FOR CLARITY OF BUILDING ELEVATIONS. REFER TO SITE PLANS, CIVIL, AND LANDSCAPE DRAWING FOR DETAILS.

CLIENT



PROJECT

OXLEY RESIDENTIAL DEVELOPMENT
 10 HONEYEATER CIRCUIT, OXLEY
 LOT 302 ON SP326512

Country: Yugara & Yugarabul
 DRAWING

BUILDING 2 - TYPE B-UNIT 5, 6 & 7
-COLOURED ELEVATIONS

JOB NUMBER 23-0069 DESIGN SP DRAWN KF CHECKED AA

SCALE 1:50 @A1 DATE CREATED 12/03/24 NORTH @A3

DRAWING NUMBER **A5-2-04** ISSUE **E**

ISSUED FOR **DA PACKAGE**

Integrated perspective

Arqus Design Pty Ltd
 ABN 68 135 616 303

Level 2 15 Malt Street
 Fortitude Valley Qld 4006
 PO Box 2455
 New Farm Qld 4005

Registration:
 Nominated Architect: Scott Peabody
 QLD: 2644
 NSW: 9038
 VIC: 800111 (Arqus Design 600035)

mail@arqudesign.com.au Phone 07 3358 0888
 www.arqudesign.com.au Fax 07 3358 0899

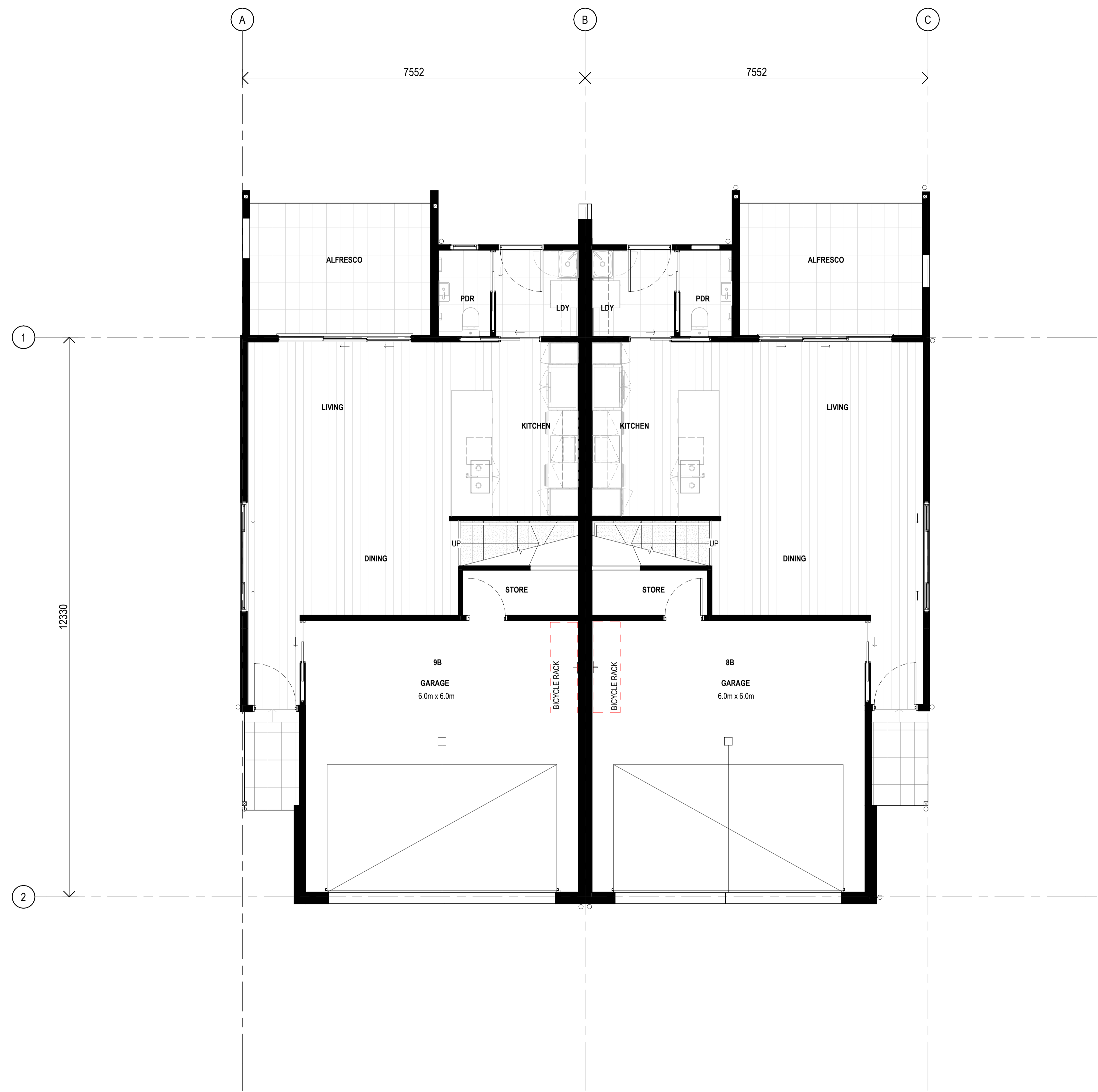
Arqus Design acknowledges the Traditional Owners of Country
 on which we live, work and design and pay our respects to their
 Elders, past and present.

NOTES
 Contractors are to verify all dimensions on site before commencing
 any work or producing shop drawings.

These drawings are protected by the laws of copyright and may not be
 copied or reproduced without the written permission of Arqus Design.

Detail applicable to the scale of the drawing published.

DATE	REVISION	ISSUE
30/05/24	FOR INFORMATION	A
19/17/24	PRELIMINARY DA PACKAGE	B
21/08/24	PRELIMINARY DA PACKAGE	C
23/08/24	DA PACKAGE	D
09/10/25	DA PACKAGE UPDATE	E



1 GROUND FLOOR - GA PLAN
 A6-2-03 1:50

CLIENT



PROJECT

OXLEY RESIDENTIAL DEVELOPMENT
 10 HONEYEATER CIRCUIT, OXLEY
 LOT 302 ON SP326512

Country: Yugara & Yugarabul

DRAWING

**BUILDING 3-GENERAL
 ARRANGEMENT - TYPE B-UNIT 8 & 9 -
 GROUND FLOOR**

JOB NUMBER	DESIGN	DRAWN	CHECKED
23-0069	SP	KF	AA

SCALE	DATE CREATED	NORTH
1:50 @A1	12/03/24	
1:200 @A3		

DRAWING NUMBER

A6-1-01

ISSUE

E

ISSUED FOR
DA PACKAGE

Integrated perspective

Arqus Design Pty Ltd
 ABN 68 135 616 303

Level 2 15 Malt Street
 Fortitude Valley Qld 4006
 PO Box 2455
 New Farm Qld 4005

Registration:
 Nominated Architect: Scott Peabody
 QLD: 2644
 NSW: 9038
 VIC: 800111 (Arqus Design 600035)

mail@arqudesign.com.au Phone 07 3358 0888
 www.arqudesign.com.au Fax 07 3358 0899

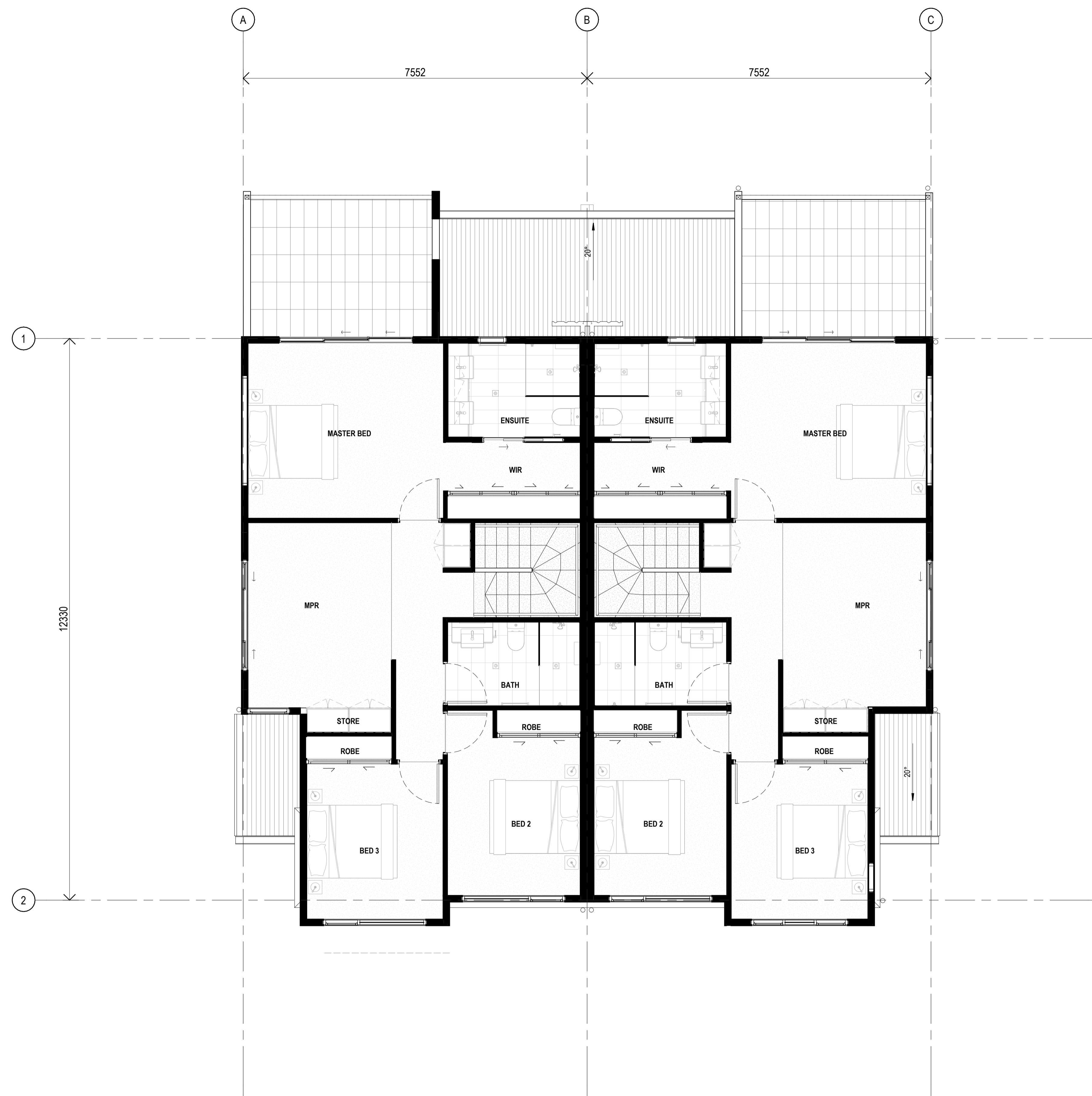
Arqus Design acknowledges the Traditional Owners of Country on which we live, work and design and pay our respects to their Elders, past and present.

NOTES
 Contractors are to verify all dimensions on site before commencing any work or producing shop drawings.

These drawings are protected by the laws of copyright and may not be copied or reproduced without the written permission of Arqus Design.

Detail applicable to the scale of the drawing published.

DATE	REVISION	ISSUE
30/05/24	FOR INFORMATION	A
19/17/24	PRELIMINARY DA PACKAGE	B
21/08/24	PRELIMINARY DA PACKAGE	C
23/08/24	DA PACKAGE	D
09/10/25	DA PACKAGE UPDATE	E



1 LEVEL 01 - GA PLAN
 A6-2-03 1:50

CLIENT



PROJECT

OXLEY RESIDENTIAL DEVELOPMENT
 10 HONEYEATER CIRCUIT, OXLEY
 LOT 302 ON SP326512

Country: Yugara & Yugarabul

DRAWING
BUILDING 3-GENERAL
ARRANGEMENT - TYPE B-UNIT 8 & 9 -
LEVEL 1

JOB NUMBER	DESIGN	DRAWN	CHECKED
23-0069	SP	KF	AA

SCALE	DATE CREATED	NORTH
1:50 @A1	12/03/24	
1:200 @A3		

DRAWING NUMBER

A6-1-02

ISSUED FOR

DA PACKAGE

ISSUE
E

10/10/2025 9:28:09 AM

Integrated perspective

Arqus Design Pty Ltd
 ABN 68 135 616 303

Level 2 15 Malt Street
 Fortitude Valley Qld 4006
 PO Box 2455
 New Farm Qld 4005

Registration:
 Nominated Architect: Scott Peabody
 QLD: 2644
 NSW: 9038
 VIC: 800111 (Arqus Design 600035)

mail@arqudesign.com.au Phone 07 3358 0888
 www.arqudesign.com.au Fax 07 3358 0899

Arqus Design acknowledges the Traditional Owners of Country on which we live, work and design and pay our respects to their Elders, past and present.

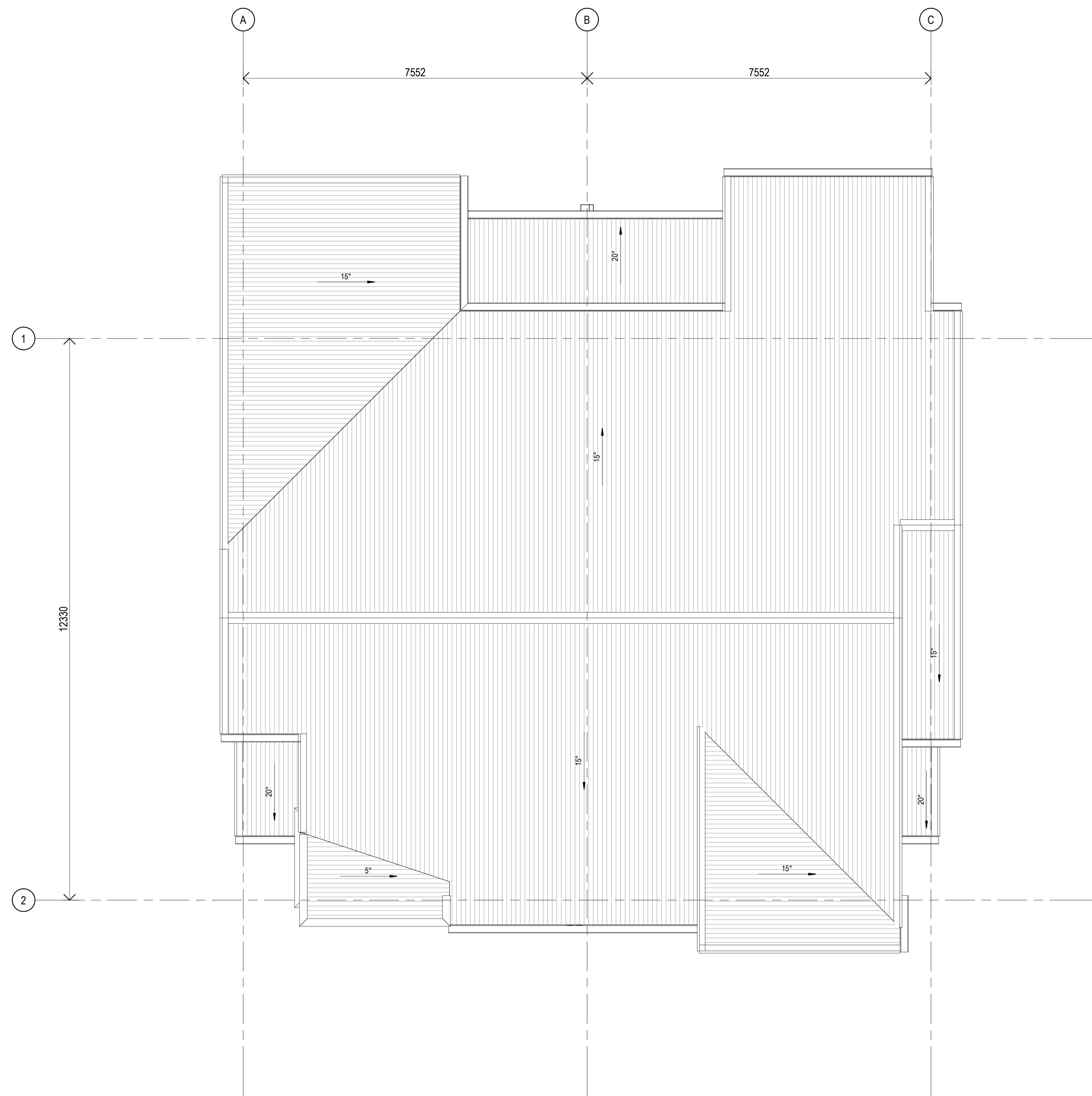
NOTES

Contractors are to verify all dimensions on site before commencing any work or producing shop drawings.

These drawings are protected by the laws of copyright and may not be copied or reproduced without the written permission of Arqus Design.

Detail applicable to the scale of the drawing published.

DATE	REVISION	ISSUE
30/05/24	FOR INFORMATION	A
19/17/24	PRELIMINARY DA PACKAGE	B
21/08/24	PRELIMINARY DA PACKAGE	C
23/08/24	DA PACKAGE	D
09/10/25	DA PACKAGE UPDATE	E



1 ROOF PLAN
 A6-2-03 1:50

CLIENT



PROJECT

OXLEY RESIDENTIAL DEVELOPMENT
10 HONEYEATER CIRCUIT, OXLEY
LOT 302 ON SP326512

Country: Yugara & Yugarabul

DRAWING

BUILDING 3-GENERAL
ARRANGEMENT - TYPE B-UNIT 8 & 9 -
ROOF PLAN

JOB NUMBER	DESIGN	DRAWN	CHECKED
23-0069	SP	KF	AA

SCALE	DATE CREATED	NORTH
1:50 @A1	12/03/24	
1:200 @A3		

DRAWING NUMBER

A6-1-03

ISSUE

E

ISSUED FOR

DA PACKAGE

Integrated perspective

Arqus Design Pty Ltd
 ABN 68 135 616 303

Level 2 15 Malt Street
 Fortitude Valley Qld 4006
 PO Box 2455
 New Farm Qld 4005

Registration:
 Nominated Architect: Scott Peabody
 QLD: 2644
 NSW: 9038
 VIC: 800111 (Arqus Design 600035)

mail@arqudesign.com.au Phone 07 3358 0888
 www.arqudesign.com.au Fax 07 3358 0899

Arqus Design acknowledges the Traditional Owners of Country
 on which we live, work and design and pay our respects to their
 Elders, past and present.

NOTES

Contractors are to verify all dimensions on site before commencing
 any work or producing shop drawings.

These drawings are protected by the laws of copyright and may not be
 copied or reproduced without the written permission of Arqus Design.

Detail applicable to the scale of the drawing published.

DATE	REVISION	ISSUE
30/05/24	FOR INFORMATION	A
19/17/24	PRELIMINARY DA PACKAGE	B
21/08/24	PRELIMINARY DA PACKAGE	C
23/08/24	DA PACKAGE	D
09/10/25	DA PACKAGE UPDATE	E

MATERIALS		
ID	IMAGE	DESCRIPTION
<varies>		
1A		FINE TEXTURE CLADDING WITH SNOWY MOUNTAIN HALF PAINT
1B		FINE TEXTURE CLADDING WITH NARROW NECK HALF PAINT
2A		LINEA WEATHERBOARD CLADDING WITH SNOWY MOUNTAINS HALF PAINT
2J		LINEA WEATHERBOARD CLADDING WITH SIMONE WEIL PAINT
2L		LINEA WEATHERBOARD CLADDING WITH DRIVE TIME PAINT
5B		RENDERED WALL WITH NARROW NECK PAINT
5L		RENDERED WALL WITH DRIVE TIME PAINT
10		METAL ROOF SHEETING WITH COLORBOND SURFMIST
14		POWDERCOAT WINDOW AND DOOR FRAMING WITH COLORBOND MONUMENT
15		DOOR WITH TIMBER NORDIK OAK
16		DOOR WITH TIMBER FINISH SILVER WATTLE

CLIENT



PROJECT

OXLEY RESIDENTIAL DEVELOPMENT
10 HONEYEATER CIRCUIT, OXLEY
LOT 302 ON SP326512

Country: Yugara & Yugarabul

DRAWING
BUILDING 3 - TYPE B-UNIT 8 & 9 -
COLOURED ELEVATIONS

JOB NUMBER DESIGN DRAWN CHECKED
 23-0069 SP KF AA

SCALE DATE CREATED NORTH
 1:50 @A1 12/03/24
 @A3

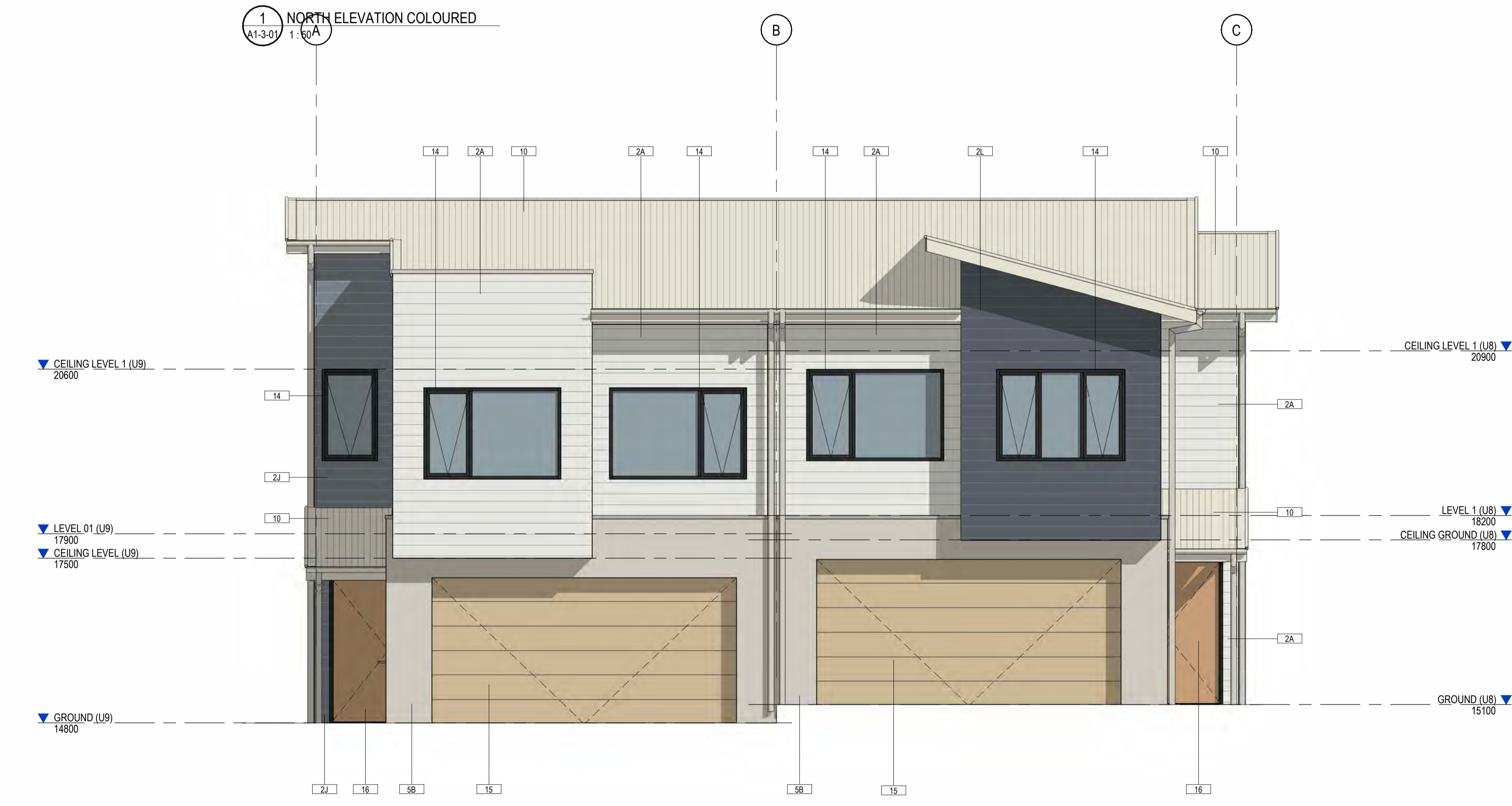
DRAWING NUMBER ISSUE
A6-2-03 E

ISSUED FOR
DA PACKAGE

NOTES:
 SURROUNDING EXTERNAL WORK (INCLUDING ROADS, BUILDING
 PADS, AND LANDSCAPE AREAS) IS NOT SHOWN FOR CLARITY OF
 BUILDING ELEVATIONS. REFER TO SITE PLANS, CIVIL, AND
 LANDSCAPE DRAWING FOR DETAILS.



1 NORTH ELEVATION COLOURED
 A1-3-01 1:50



2 SOUTH ELEVATION COLOURED
 A1-3-01 1:50

Integrated perspective

Arqus Design Pty Ltd
 ABN 68 135 616 303

Level 2 15 Malt Street
 Fortitude Valley Qld 4006
 PO Box 2455
 New Farm Qld 4005

Registration:
 Nominated Architect: Scott Peabody
 QLD: 2644
 NSW: 9038
 VIC: 800111 (Arqus Design 600035)

mail@arqudesign.com.au Phone 07 3358 0888
 www.arqudesign.com.au Fax 07 3358 0899

Arqus Design acknowledges the Traditional Owners of Country on which we live, work and design and pay our respects to their Elders, past and present.

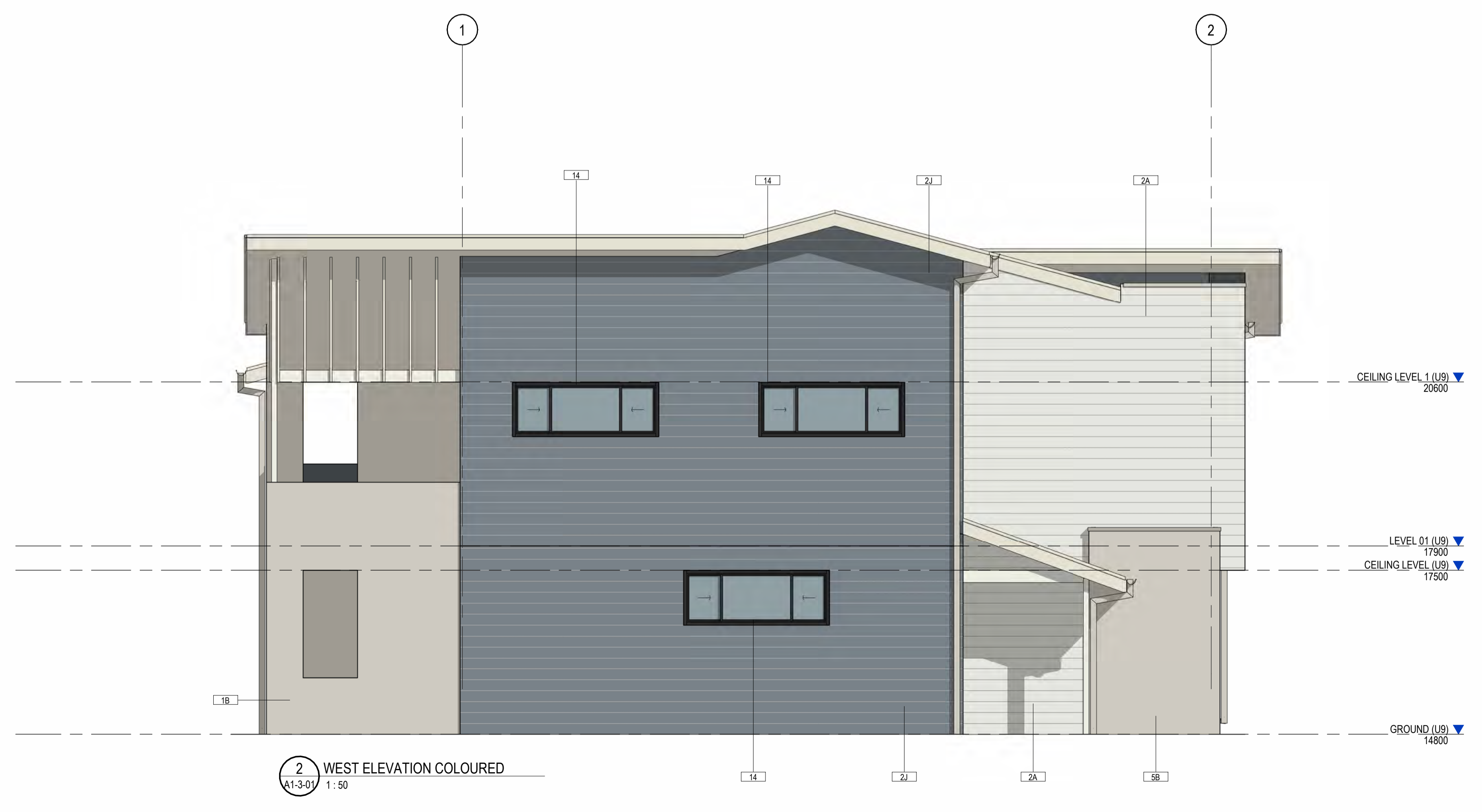
NOTES

Contractors are to verify all dimensions on site before commencing any work or producing shop drawings.

These drawings are protected by the laws of copyright and may not be copied or reproduced without the written permission of Arqus Design.

Detail applicable to the scale of the drawing published.

DATE	REVISION	ISSUE
30/05/24	FOR INFORMATION	A
19/17/24	PRELIMINARY DA PACKAGE	B
21/08/24	PRELIMINARY DA PACKAGE	C
23/08/24	DA PACKAGE	D
09/10/25	DA PACKAGE UPDATE	E



ID	IMAGE	DESCRIPTION
<varies>		
1A		FINE TEXTURE CLADDING WITH SNOWY MOUNTAIN HALF PAINT
1B		FINE TEXTURE CLADDING WITH NARROW NECK HALF PAINT
2A		LINEA WEATHERBOARD CLADDING WITH SNOWY MOUNTAINS HALF PAINT
2J		LINEA WEATHERBOARD CLADDING WITH SIMONE WEIL PAINT
2L		LINEA WEATHERBOARD CLADDING WITH DRIVE TIME PAINT
5B		RENDERED WALL WITH NARROW NECK PAINT
5L		RENDERED WALL WITH DRIVE TIME PAINT
10		METAL ROOF SHEETING WITH COLORBOND SURFMIST
14		POWDERCOAT WINDOW AND DOOR FRAMING WITH COLORBOND MONUMENT
15		DOOR WITH TIMBER NORDIK OAK
16		DOOR WITH TIMBER FINISH SILVER WATTLE

NOTES:
 SURROUNDING EXTERNAL WORK (INCLUDING ROADS, BUILDING PADS, AND LANDSCAPE AREAS) IS NOT SHOWN FOR CLARITY OF BUILDING ELEVATIONS. REFER TO SITE PLANS, CIVIL, AND LANDSCAPE DRAWING FOR DETAILS.

CLIENT



PROJECT

OXLEY RESIDENTIAL DEVELOPMENT
10 HONEYEATER CIRCUIT, OXLEY
LOT 302 ON SP326512

Country: Yugara & Yugarabul

DRAWING
BUILDING 3 - TYPE B-UNIT 8 & 9 -
COLOURED ELEVATIONS

JOB NUMBER DESIGN DRAWN CHECKED
 23-0069 SP KF AA

SCALE DATE CREATED NORTH
 1:50 @A1 12/03/24
 @A3

DRAWING NUMBER ISSUE
A6-2-04 E

ISSUED FOR
DA PACKAGE

Integrated perspective

Arqus Design Pty Ltd
 ABN 68 135 616 303

Level 2 15 Malt Street
 Fortitude Valley Qld 4006
 PO Box 2455
 New Farm Qld 4005

Registration:
 Nominated Architect: Scott Peabody
 QLD: 2644
 NSW: 9038
 VIC: 800111 (Arqus Design 600035)

mail@arqudesign.com.au Phone 07 3358 0888
 www.arqudesign.com.au Fax 07 3358 0899

Arqus Design acknowledges the Traditional Owners of Country on which we live, work and design and pay our respects to their Elders, past and present.

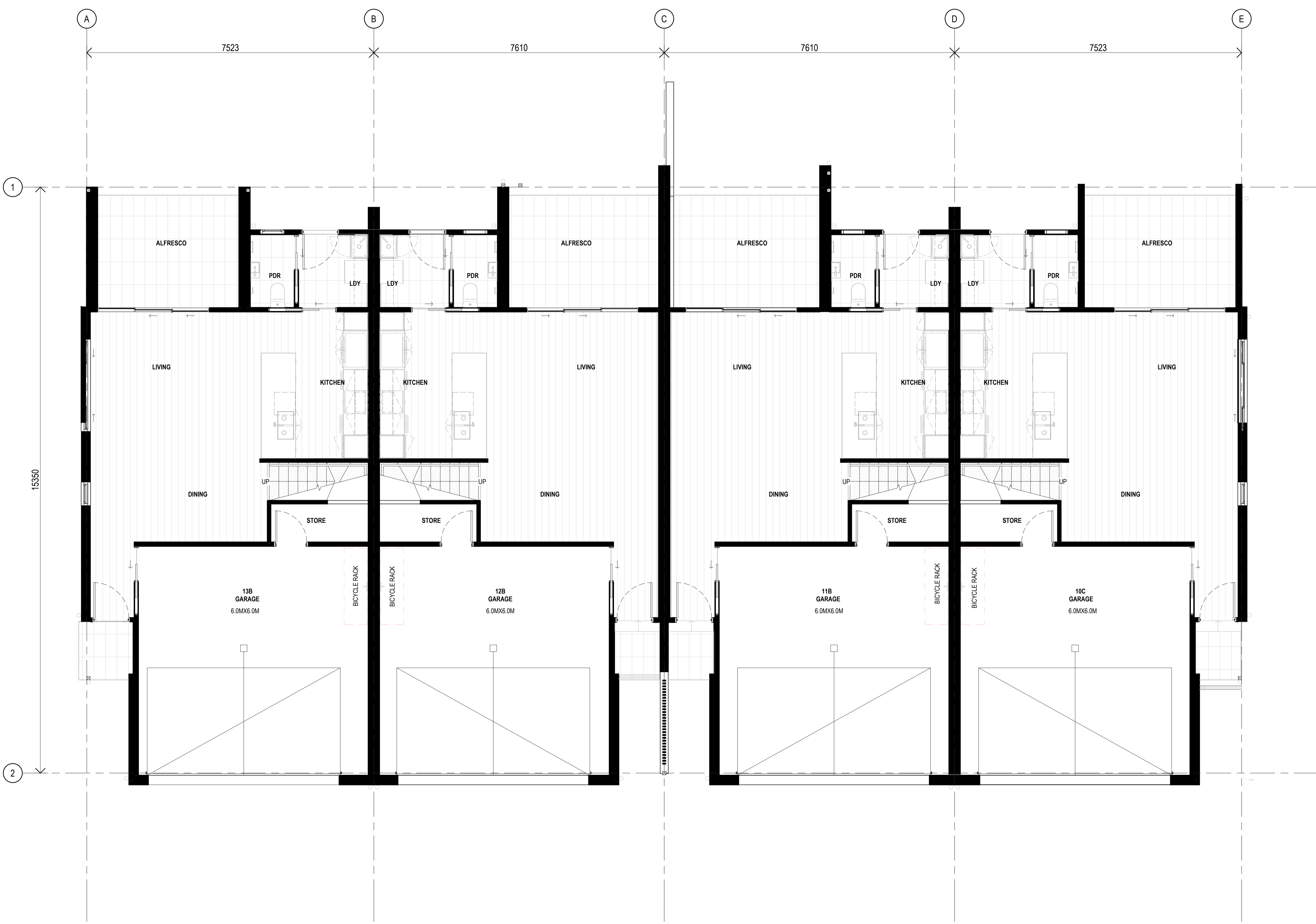
NOTES

Contractors are to verify all dimensions on site before commencing any work or producing shop drawings.

These drawings are protected by the laws of copyright and may not be copied or reproduced without the written permission of Arqus Design.

Detail applicable to the scale of the drawing published.

DATE	REVISION	ISSUE
30/05/24	FOR INFORMATION	A
19/07/24	PRELIMINARY DA PACKAGE	B
21/08/24	PRELIMINARY DA PACKAGE	C
23/08/24	DA PACKAGE	D
10/10/25	DA PACKAGE UPDATE	E



1 GROUND FLOOR - GA PLAN
 A7-2-01 1:50

CLIENT



PROJECT

OXLEY RESIDENTIAL DEVELOPMENT
 10 HONEYEATER CIRCUIT, OXLEY
 LOT 302 ON SP326512

Country: Yugara & Yugarabul

DRAWING

BUILDING 4-GENERAL
ARRANGEMENT - TYPE B- UNIT
10,11,12&13-GROUND FLOOR

JOB NUMBER	DESIGN	DRAWN	CHECKED
23-0069	SP	KF	AA

SCALE	DATE CREATED	NORTH
1:50 @A1	13/03/24	
1:200 @A3		

DRAWING NUMBER

A7-1-01

ISSUED FOR

DA PACKAGE

Integrated perspective

Arqus Design Pty Ltd
 ABN 68 135 616 303

Level 2 15 Malt Street
 Fortitude Valley Qld 4006
 PO Box 2455
 New Farm Qld 4005

Registration:
 Nominated Architect: Scott Peabody
 QLD: 2644
 NSW: 9038
 VIC: 800111 (Arqus Design 600035)

mail@arqudesign.com.au Phone 07 3358 0888
 www.arqudesign.com.au Fax 07 3358 0899

Arqus Design acknowledges the Traditional Owners of Country on which we live, work and design and pay our respects to their Elders, past and present.

NOTES

Contractors are to verify all dimensions on site before commencing any work or producing shop drawings.

These drawings are protected by the laws of copyright and may not be copied or reproduced without the written permission of Arqus Design.

Detail applicable to the scale of the drawing published.

DATE	REVISION	ISSUE
30/05/24	FOR INFORMATION	A
19/07/24	PRELIMINARY DA PACKAGE	B
21/08/24	PRELIMINARY DA PACKAGE	C
23/08/24	DA PACKAGE	D
05/08/25	DA PACKAGE UPDATE	E
10/10/25	DA PACKAGE UPDATE	F

CLIENT



PROJECT

OXLEY RESIDENTIAL DEVELOPMENT
 10 HONEYEATER CIRCUIT, OXLEY
 LOT 302 ON SP326512

Country: Yugara & Yugarabul

DRAWING

BUILDING 4-GENERAL
ARRANGEMENT - TYPE B- UNIT
10,11,12&13-LEVEL 1

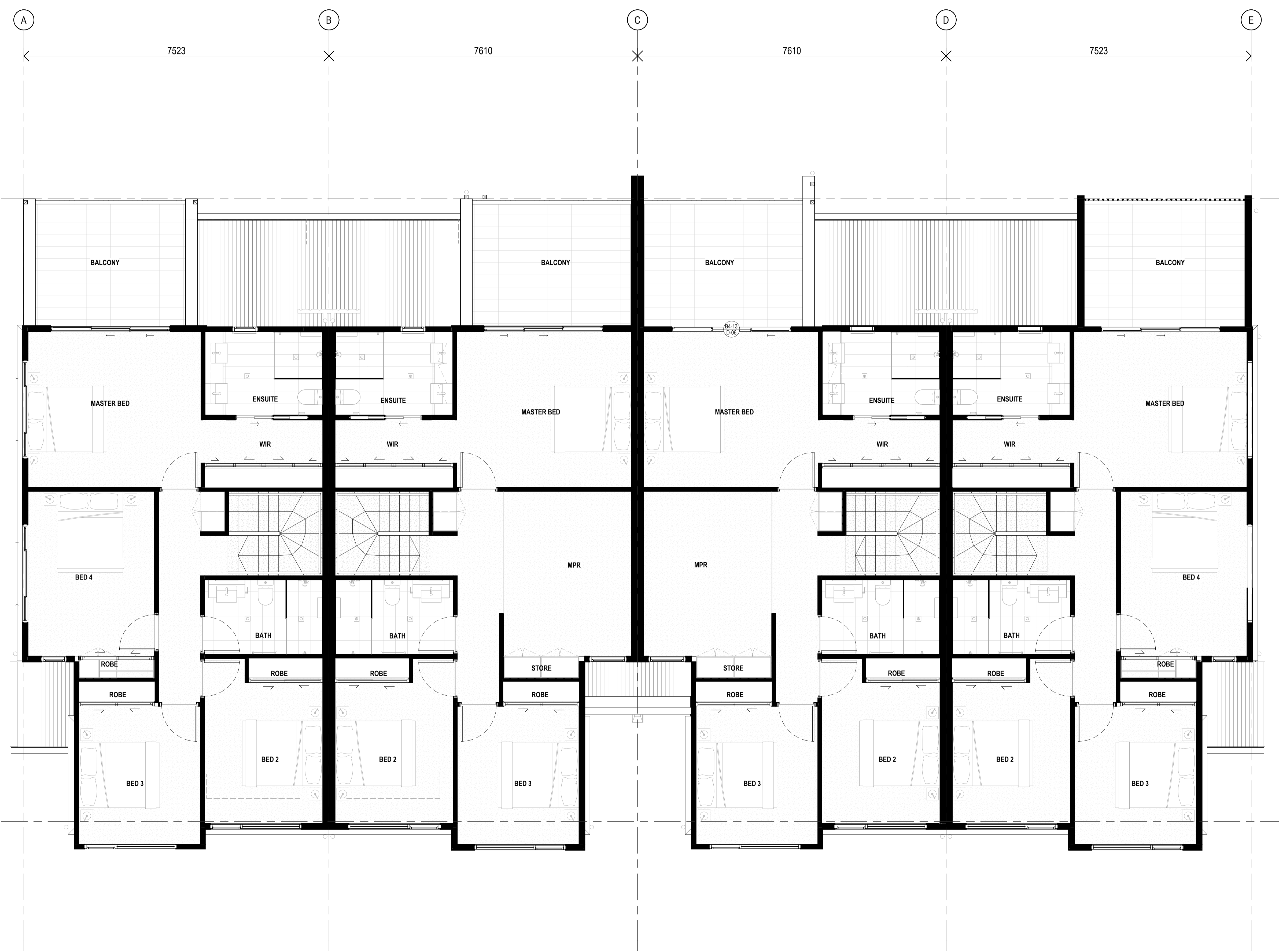
JOB NUMBER	DESIGN	DRAWN	CHECKED
23-0069	SP	KF	AA

SCALE	DATE CREATED	NORTH
1:50 @A1	13/03/24	
1:200 @A3		

DRAWING NUMBER	ISSUE
A7-1-02	F

ISSUED FOR

DA PACKAGE



1 LEVEL 1 - GA PLAN
 A7-2-01 1:50

Integrated perspective

Arqus Design Pty Ltd
 ABN 68 135 616 303

Level 2 15 Malt Street
 Fortitude Valley Qld 4006
 PO Box 2455
 New Farm Qld 4005

Registration:
 Nominated Architect: Scott Peabody
 QLD: 2644
 NSW: 9038
 VIC: 800111 (Arqus Design 600035)

mail@arqudesign.com.au Phone 07 3358 0888
 www.arqudesign.com.au Fax 07 3358 0899

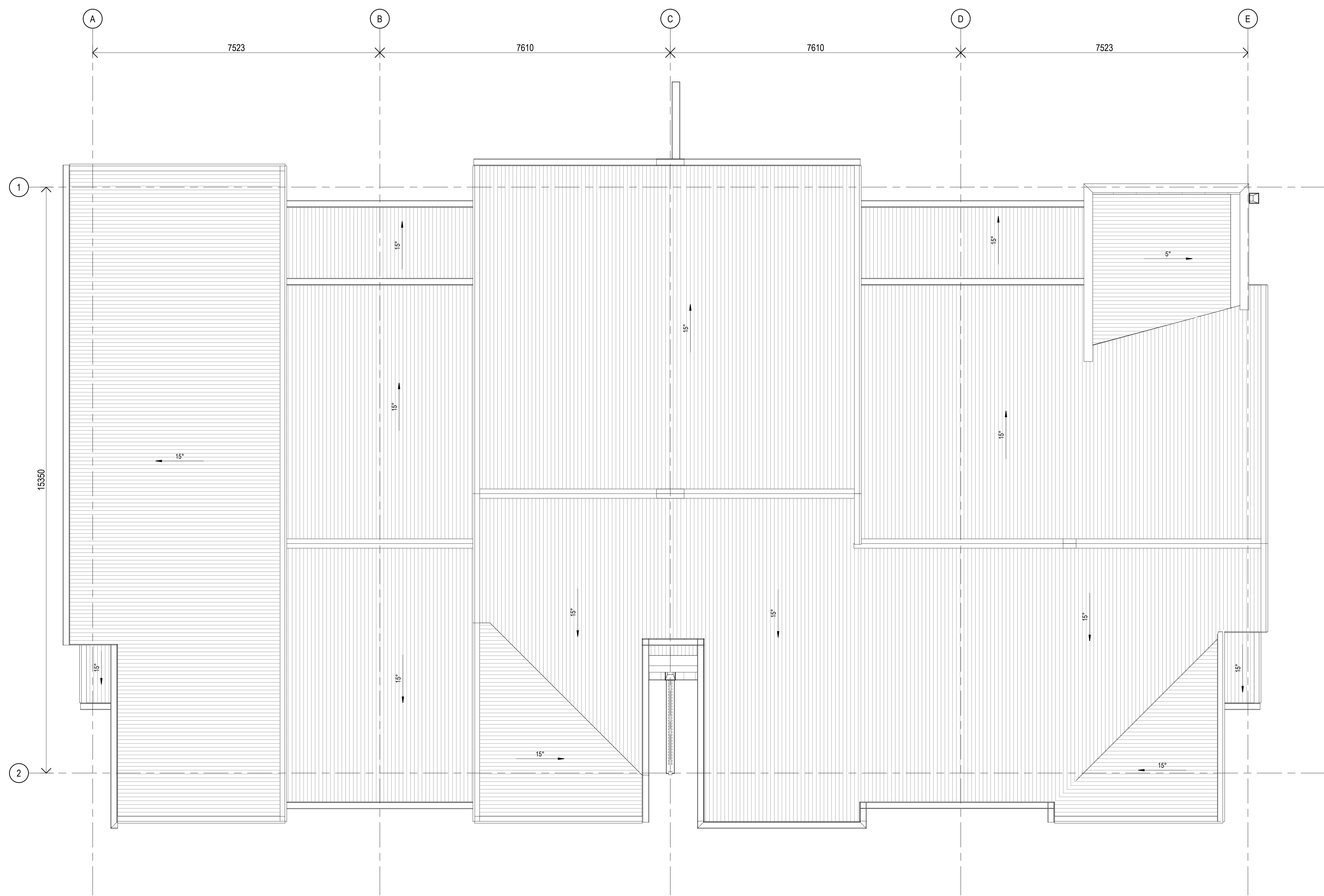
Arqus Design acknowledges the Traditional Owners of Country on which we live, work and design and pay our respects to their Elders, past and present.

NOTES
 Contractors are to verify all dimensions on site before commencing any work or producing shop drawings.

These drawings are protected by the laws of copyright and may not be copied or reproduced without the written permission of Arqus Design.

Detail applicable to the scale of the drawing published.

DATE	REVISION	ISSUE
30/05/24	FOR INFORMATION	A
19/07/24	PRELIMINARY DA PACKAGE	B
21/08/24	PRELIMINARY DA PACKAGE	C
23/08/24	DA PACKAGE	D
10/10/25	DA PACKAGE UPDATE	E



CLIENT



PROJECT

OXLEY RESIDENTIAL DEVELOPMENT
10 HONEYEATER CIRCUIT, OXLEY
LOT 302 ON SP326512

Country: Yugara & Yugarabul

DRAWING
BUILDING 4-GENERAL
ARRANGEMENT -TYPE B-UNIT
10,11,12&13- ROOF PLAN

JOB NUMBER	DESIGN	DRAWN	CHECKED
23-0069	SP	KF	AA

SCALE	DATE CREATED	NORTH
1:50 @A1	13/03/24	
1:200 @A3		

DRAWING NUMBER

A7-1-03

ISSUE

E

ISSUED FOR

DA PACKAGE

1 ROOF PLAN
 A7-2-01 1:50

Integrated perspective

Arqus Design Pty Ltd
 ABN 68 135 616 303
 Level 2 15 Malt Street
 Fortitude Valley Qld 4006
 PO Box 2455
 New Farm Qld 4005

Registration:
 Nominated Architect: Scott Peabody
 QLD: 2644
 NSW: 9038
 VIC: 800111 (Arqus Design 600035)

mail@arqudesign.com.au Phone 07 3358 0888
 www.arqudesign.com.au Fax 07 3358 0899
 Arqus Design acknowledges the Traditional Owners of Country
 on which we live, work and design and pay our respects to their
 Elders, past and present.

NOTES

Contractors are to verify all dimensions on site before commencing any work or producing shop drawings.

These drawings are protected by the laws of copyright and may not be copied or reproduced without the written permission of Arqus Design.

Detail applicable to the scale of the drawing published.

DATE	REVISION	ISSUE
30/05/24	FOR INFORMATION	A
19/07/24	PRELIMINARY DA PACKAGE	B
21/08/24	PRELIMINARY DA PACKAGE	C
23/08/24	DA PACKAGE	D
10/10/25	DA PACKAGE UPDATE	E



1 NORTH ELEVATION COLOURED
 1:50

MATERIALS			MATERIALS			MATERIALS		
ID	IMAGE	DESCRIPTION	ID	IMAGE	DESCRIPTION	ID	IMAGE	DESCRIPTION
1B		FINE TEXTURE CLADDING WITH NARROW NECK HALF PAINT	2A		LINEA WEATHERBOARD CLADDING WITH SNOWY MOUNTAIN HALF PAINT	13		DOOR WITH PAINTED COLORBOND BASALT
1J		FINE TEXTURE CLADDING WITH SIMONE WEIL PAINT	5B		RENDERED WALL WITH NARROW NECK HALF PAINT	14		POWDERCOAT WINDOW AND DOOR FRAMING WITH COLORBOND MONUMENT
1L		FINE TEXTURE CLADDING WITH DRIVE TIME PAINT	5L		RENDERED WALL WITH DRIVE TIME PAINT	15		DOOR WITH TIMBER NORDIK OAK
			10		METAL ROOF SHEETING WITH COLORBOND SURFMIST	16		DOOR WITH TIMBER FINISH SILVER WATTLE



2 SOUTH ELEVATION COLOURED
 1:50

NOTES:
 SURROUNDING EXTERNAL WORK (INCLUDING ROADS, BUILDING PADS, AND LANDSCAPE AREAS) IS NOT SHOWN FOR CLARITY OF BUILDING ELEVATIONS. REFER TO SITE PLANS, CIVIL, AND LANDSCAPE DRAWING FOR DETAILS.

CLIENT

PROJECT

OXLEY RESIDENTIAL DEVELOPMENT
 10 HONEYEATER CIRCUIT, OXLEY
 LOT 302 ON SP326512

Country: Yugara & Yugarabul

DRAWING

BUILDING 4 - TYPE B - UNIT
10,11,12&13-COLOURED ELEVATIONS

JOB NUMBER	DESIGN	DRAWN	CHECKED
23-0069	SP	KF	AA

SCALE	DATE CREATED	NORTH
1:50	13/03/24	

DRAWING NUMBER

A7-2-03

ISSUED FOR

DA PACKAGE

10/10/2025 9:26:08 AM

Integrated perspective

Arqus Design Pty Ltd
 ABN 68 135 616 303

Level 2 15 Malt Street
 Fortitude Valley Qld 4006
 PO Box 2455
 New Farm Qld 4005

Registration:
 Nominated Architect: Scott Peabody
 QLD: 2644
 NSW: 9038
 VIC: 800111 (Arqus Design 600035)

mail@arqudesign.com.au Phone 07 3358 0888
 www.arqudesign.com.au Fax 07 3358 0899

Arqus Design acknowledges the Traditional Owners of Country on which we live, work and design and pay our respects to their Elders, past and present.

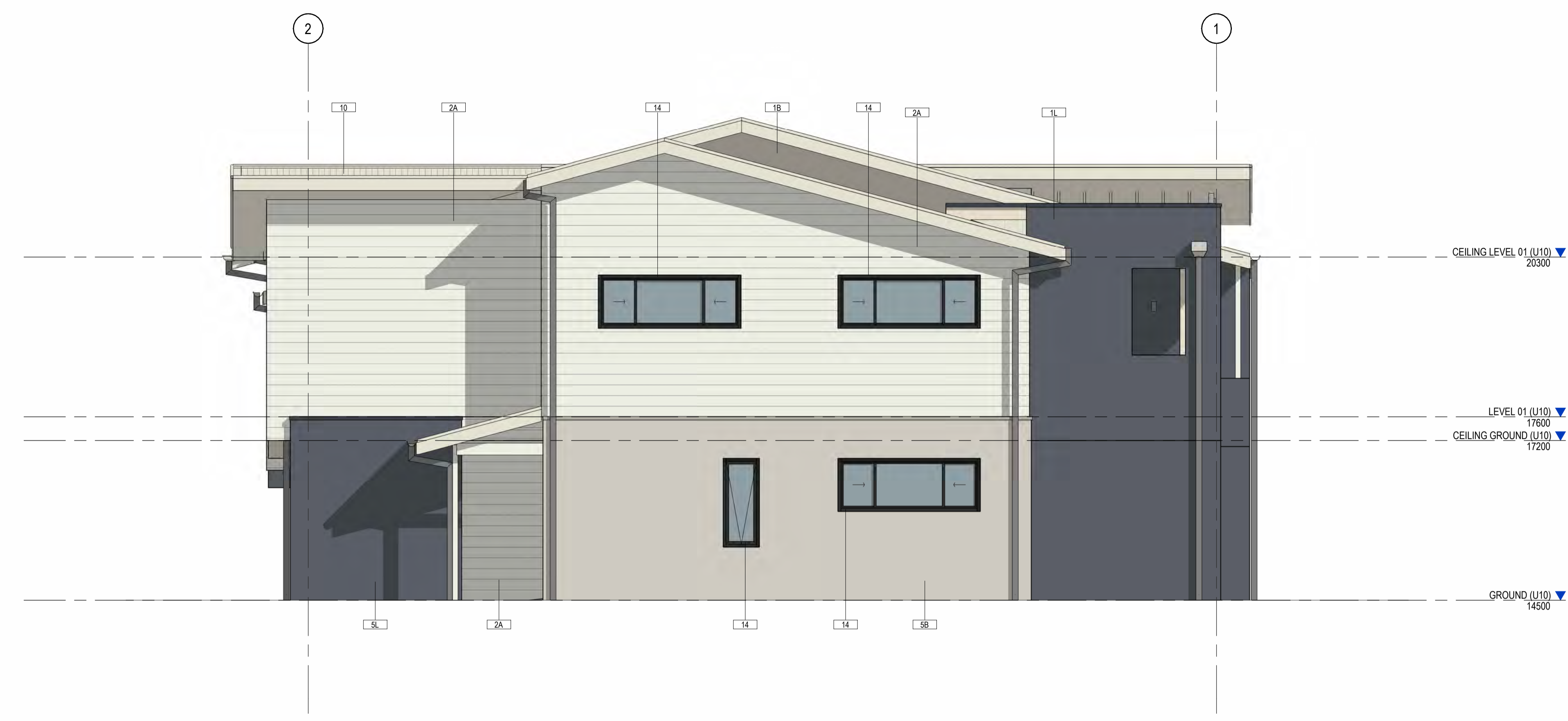
NOTES

Contractors are to verify all dimensions on site before commencing any work or producing shop drawings.

These drawings are protected by the laws of copyright and may not be copied or reproduced without the written permission of Arqus Design.

Detail applicable to the scale of the drawing published.

DATE	REVISION	ISSUE
30/05/24	FOR INFORMATION	A
19/07/24	PRELIMINARY DA PACKAGE	B
21/08/24	PRELIMINARY DA PACKAGE	C
23/08/24	DA PACKAGE	D
10/10/25	DA PACKAGE UPDATE	E



1 EAST ELEVATION COLOURED
 1:50



2 WEST ELEVATION COLOURED
 1:50

MATERIALS		
ID	IMAGE	DESCRIPTION
<varies>		
1B		FINE TEXTURE CLADDING WITH NARROW NECK HALF PAINT
1J		FINE TEXTURE CLADDING WITH SIMONE WEIL PAINT
1L		FINE TEXTURE CLADDING WITH DRIVE TIME PAINT
2A		LINEA WEATHERBOARD CLADDING WITH SNOWY MOUNTAIN HALF PAINT
5B		RENDERED WALL WITH NARROW NECK HALF PAINT
5L		RENDERED WALL WITH DRIVE TIME PAINT
10		METAL ROOF SHEETING WITH COLORBOND SURFMIST
13		DOOR WITH PAINTED COLORBOND BASALT
14		POWDERCOAT WINDOW AND DOOR FRAMING WITH COLORBOND MONUMENT
15		DOOR WITH TIMBER NORDIK OAK
16		DOOR WITH TIMBER FINISH SILVER WATTLE

NOTES:
 SURROUNDING EXTERNAL WORK (INCLUDING ROADS, BUILDING PADS, AND LANDSCAPE AREAS) IS NOT SHOWN FOR CLARITY OF BUILDING ELEVATIONS. REFER TO SITE PLANS, CIVIL, AND LANDSCAPE DRAWING FOR DETAILS.

CLIENT



PROJECT

OXLEY RESIDENTIAL DEVELOPMENT
10 HONEYEATER CIRCUIT, OXLEY
LOT 302 ON SP326512

Country: Yugara & Yugarabul

DRAWING
BUILDING 4 - TYPE B - UNIT
10,11,12&13-COLOURED ELEVATIONS

JOB NUMBER 23-0069 DESIGN SP DRAWN KF CHECKED AA

SCALE 1:50 @A1 @A3 DATE CREATED 13/03/24 NORTH

DRAWING NUMBER **A7-2-04** ISSUE **E**

ISSUED FOR **DA PACKAGE**