

WALKABILITY CATCHMENT PLAN/ CONTEXT ANALYSIS

NOT TO BE USED FOR ENGINEERING DESIGN OR CONSTRUCTION

NOTES

This plan was prepared as a provisional layout to accompany a development application. The information on this plan is not suitable for any other purpose.

Property dimensions, areas, numbers of lots and contours and other physical features shown have been compiled from existing information and may not have been verified by field survey. These may need verification if the development application is approved and development proceeds, and may change when a full survey is undertaken or in order to comply with development approval conditions.

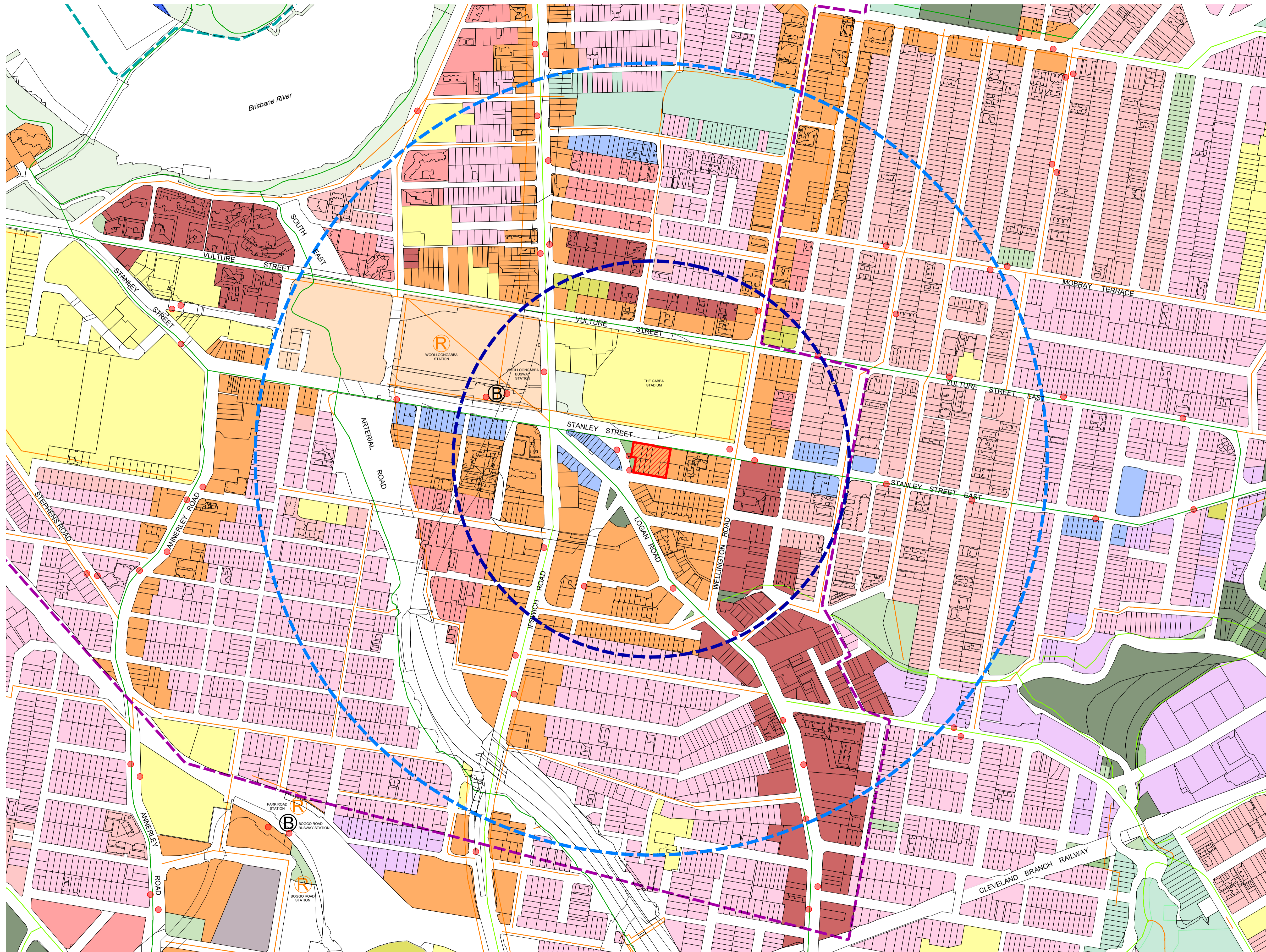
No reliance should be placed on the information on this plan for detailed subdivision design or for any financial dealings involving the land.

Pavements and centrelines shown are indicative only and are subject to Engineering Design.

Saunders Havill Group therefore disclaims any liability for any loss or damage whatsoever or howsoever incurred, arising from any party using or relying upon this plan for any purpose other than as a document prepared for the sole purpose of accompanying a development application and which may be subject to alteration beyond the control of the Saunders Havill Group. Unless a development approval states otherwise, this is not an approved plan.

DCDB © State of Queensland (Department of Natural Resources and Mines) 2019.
Lidar Data © State of Queensland (Department of Natural Resources and Mines) 2018.

* This note is an integral part of this plan/data. Reproduction of this plan or any part of it without this note being included in full will render the information shown on such reproduction invalid and not suitable for use.



LEGEND

- Site Boundary
- 400m Catchment
- 800m Catchment
- Bikeway - Primary
- Bikeway - Secondary
- Bikeway - Local
- Veloway 1
- Busway Station
- Bus Stop
- Railway Station
- City Frame
- City Core

ZONING

- BCC - Community Facilities
- BCC - Centre
- BCC - Sport & Recreation
- BCC - Mixed Use
- BCC - Open Space (Metro)
- BCC - Open Space (Local)
- BCC - Open Space
- BCC - Open Space (District)
- BCC - Special Purposes (Utility Service)
- BCC - Character Residential
- BCC - Low-Medium Density Residential
- BCC - Medium Density Residential
- BCC - High Density Residential
- BCC - Low Impact Industry
- BCC - Emerging Community
- BCC - Specialised Centre

Note: The layer includes future Cross River Rail Stations & other key Queensland Rail Infrastructure (eg Depots).

RP DESCRIPTION: Lot 3 & 4 on RP59481, Lot 19, 45 & 46 on RP11809, Lot 47 on RP110862 and Lot 2 on SP288089

