

# Parkside Yeronga

Lot 101

Landscape Concept Report

Issue : [D]

d: 29.07.25

Prepared by:



PLANS AND DOCUMENTS  
referred to in the PDA  
DEVELOPMENT APPROVAL

Approval no: DEV2025/1674

Date: 15 September 2025



CUS-LA-RPT-00001

marchesepartners

 retireaustralia





Document Control Sheet

Project: Parkside Yeronga Lot 101  
Report Title: Landscape Concept Report

Authors: Nilesch Patel, Louise Thynne, Ben Hindley, Milkana Kirova  
Approved by: Nilesch Patel

File Location: Z:\Synergy\Projects\24\24126 Lot 1 Parkside Yeronga Green Spine Extension\03 Working\02 InDesign

Revision	Date	Approved
Rev A	18 July 2025	NP
Rev B	22 July 2025	NP
Rev C	24 July 2025	NP
Rev D	29 July 2025	NP





CONTENTS

1.0  
Landscape Context .....4

2.0  
Open Space Connections.....5

3.0  
Parkside Yeronga Masterplan .....6

4.0  
Landscape Design Principles .....7

5.0  
Landscape Design Intent..... 11

6.0  
Landscape Concept Plan ..... 12

7.0  
Landscape Sections ..... 13

8.0  
Landscape Sections ..... 14

9.0  
Materials Palette ..... 15

10.0  
Planting Palette..... 16

11.0  
Movement Strategy..... 18

12.0  
Landscape Area..... 19

PLANS AND DOCUMENTS  
referred to in the PDA  
DEVELOPMENT APPROVAL

Approval no: DEV2025/1674

Date: 15 September 2025

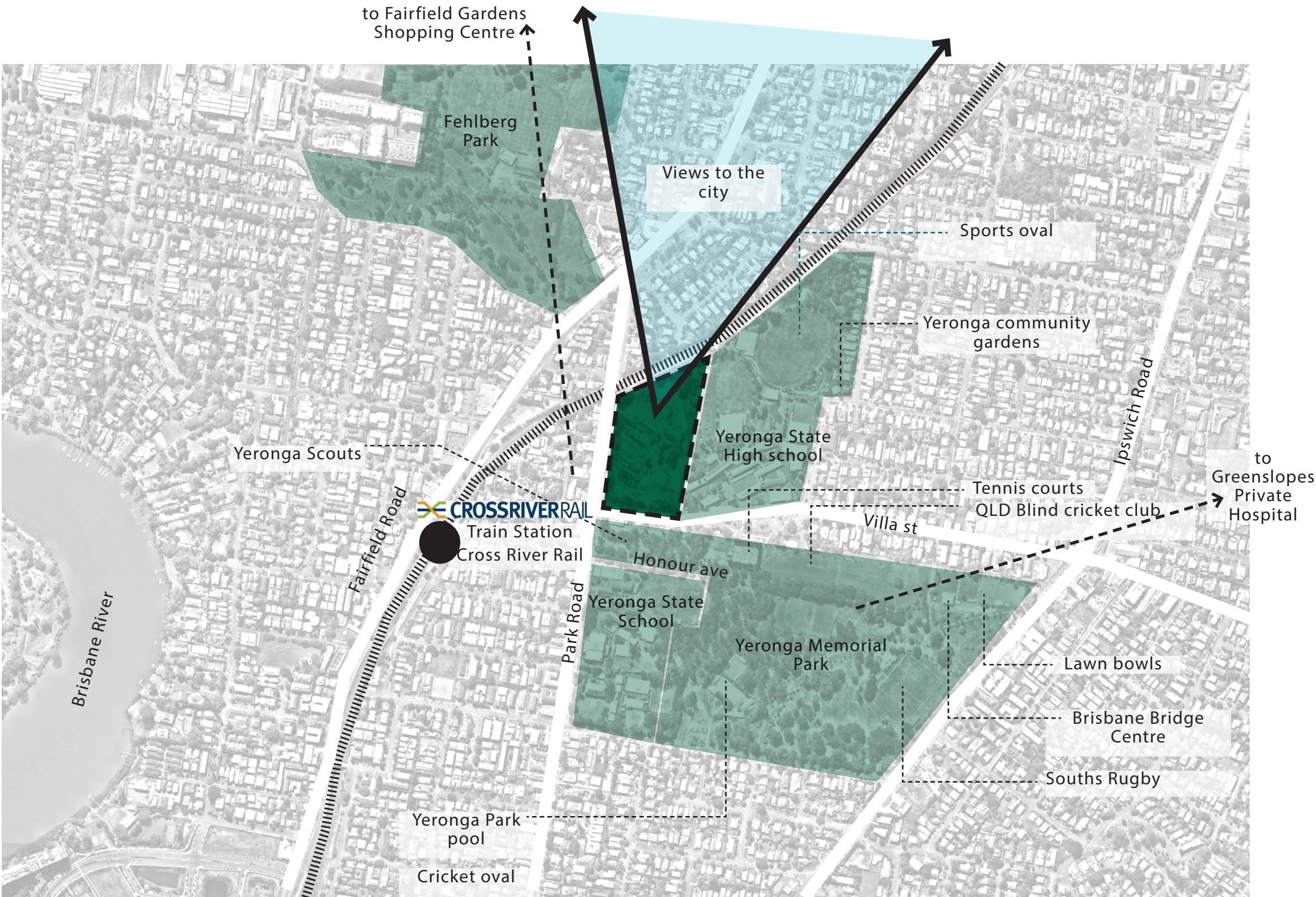


Queensland  
Government








# 1.0 Landscape Context



LEGEND

-  YERONGA HEART
-  TRAIN LINE
-  PUBLIC OPEN SPACE

Parkside Yeronga community is situated on a former TAFE College campus at the heart of Yeronga, a leafy riverside suburb approximately 5km south of Brisbane's CBD. Lot 101 lies to the south-west corner of the the broader Parkside Yeronga community and is bounded by Park Road to the west, Villa Street to the south and Currawong Crescent to the north.

Surrounded by key community assets including Yeronga State School , Yeronga State High School and several key sporting / recreation clubs, the site strategic location creates an ideal location for community living. Wide city views are possible from the centre of the site and upper level at Villa Street. The site is directly adjacent to the large heritage-listed Yeronga Memorial Park. Fehlborg Park and major green open space are also located within walking distance across Fairfield Road. It's strategic location provides the ideal opportunity for community living surrounded by a new sub tropical landscape.

Yeronga train station on the Beenleigh-Gold Coast rail corridor and the new Cross River Rail station are short walking distance. The site is strategically connected to major arterial roads - Ipswich Road and Fairfield Road.



# 2.0 Open Space Connections

- LEGEND
- PARKSIDE PUBLIC OPEN SPACE
  - GREEN CONNECTIONS



PLANS AND DOCUMENTS referred to in the PDA DEVELOPMENT APPROVAL

Approval no: DEV2025/1674

Date: 15 September 2025

Queensland Government






# 3.0 Parkside Yeronga Masterplan

PLANS AND DOCUMENTS  
referred to in the PDA  
DEVELOPMENT APPROVAL

Approval no: DEV2025/1674  
Date: 15 September 2025



Queensland  
Government

The concept for Lot 101 will respond to the design of the Parkside Yeronga Retire Australia site and the Green Spine to incorporate the core design principles and direction of the Masterplan. This will ensure a cohesive development for the entire precinct.

The design principles of the Masterplan bring together the “Q Design” principles endorsed by the Queensland Government, overlaid by the subtropical living guidelines “Buildings that Breathe” endorsed by the Brisbane City Council.

The extracts below outline the above principles and key design responses from the Masterplan.

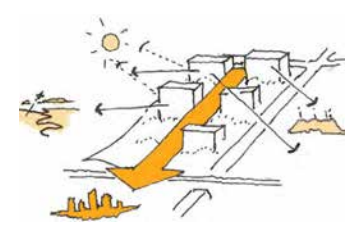
## Q Design (Queensland Government)

- 01 Be climate responsive
- 02 Be inspired by local place, character, form & culture
- 03 Work with & enhance natural systems, landscape character & biodiversity
- 04 Create well defined, legible & connected streets & spaces
- 05 Create great places for people to live
- 06 Deliver diverse development forms & density
- 07 Embed opportunities for adaptation & change over time
- 08 Lead by example
- 09 Engage effectively

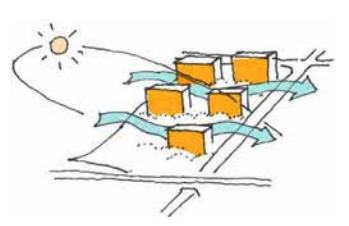
## Buildings that Breathe (Brisbane City Council)

- 01 Orientate yourself
- 02 Occupy Outdoor Spaces
- 03 Illuminate with Daylight
- 04 Natural Air and Ventilation
- 05 Shade and Protect
- 06 Living Greenery
- 07 identity matters
- 08 Reduce Energy and Waste


### Extract from "Preliminary Approval Development Application Master Plan Report" (Section 1.1)




**Open to the View & Daylight**  
Good site ingredients enable good orientation, and distant views.



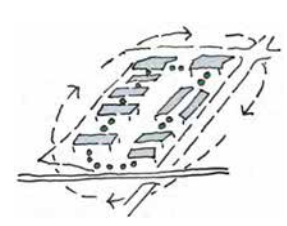
**Orientation**  
Stepping down the slope provides a good fit with topography in addition to optimising space between buildings to promote good environmental performance.



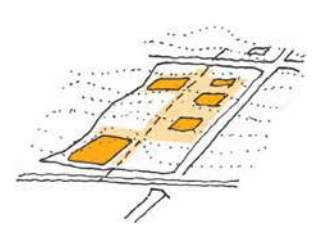
**Spine and focus**  
A central green spine organises the built form and provides a clear axis to the site.



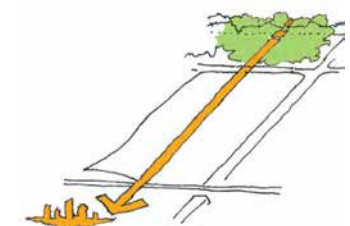
**Connectivity**  
Public pedestrian pathways connect the precinct with the wider neighborhood and extends the open space network.



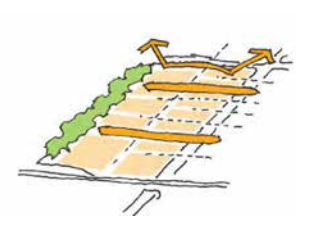
**Primed for networking and adaptation**  
The precinct has the ingredients for the upgrading and networking of systems over time.



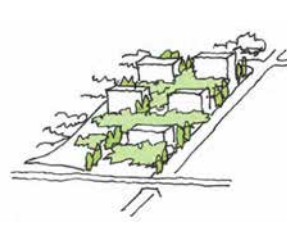
**Deep Soil Network**  
There is a robust strategy for integrated deep soil reservoirs for significant, long lived trees - a legacy green grid.



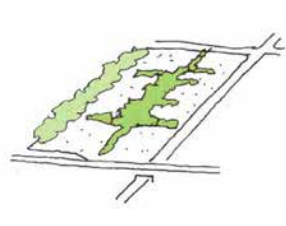
**Link Forever the Parkland to the City**  
The proposal makes a strong link Memorial Park through the site to the CBD skyline.




**Respond to Adjoining Urban Conditions**  
The proposal recognises the adjoining scale and grain of the city with residential scale and form along Park Road and a civic scale along Villa Street towards the edge to the school.




**Cooling Green Canopy**  
Integrate a variety of significant vegetation to provide shade and cooling micro-climates



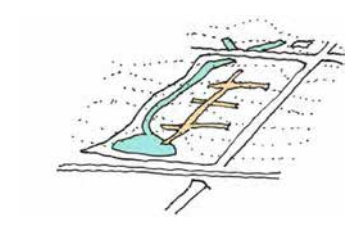
**Community Catalyst at the Core**  
Locate the community catalyst centrally to the scheme with multiple connections throughout - touch everyone.



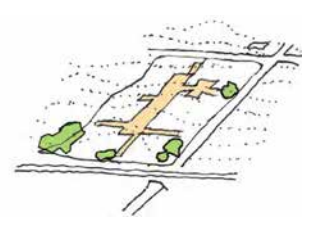
**Growing over time**  
Our aim is to enable community led programs and activities to strengthen community ties and demonstrate resilience through cooperation.



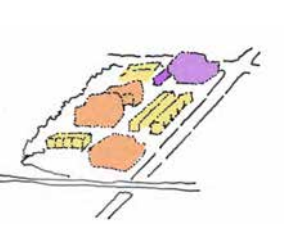
**Catalyst**  
Community facilities will provide important community functions and create new stories.




**Water Naturally**  
The site accommodate the natural flow of water, integrate into open space strategy, enhance through Water sensitive Urban Design network.




**Existing Trees Retained**  
Existing significant trees will be preserved where possible with additional planting integrating into the open space strategy.



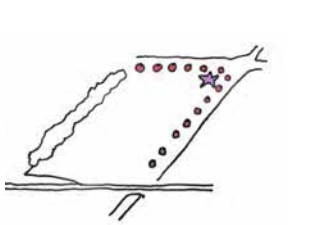
**Diversity built in**  
The range of tenancies and typologies provides affordability through housing choice.



**Diverse but connected**  
Open space is intended to unite residents and provide an opportunity for engagement.



**Outreach**  
Community services will provide important point of connection and engagement with the wider community.



**Street address**  
Street facing lots and buildings will ensure that streets feel active and secure.



# 4.0 Landscape Design Principles

PLANS AND DOCUMENTS  
referred to in the PDA  
DEVELOPMENT APPROVAL

Approval no: DEV2025/1674

Date: 15 September 2025



The Landscape Design Principles set out key themes for the integration of the Lot 101 site into Yeronga Parkside and the wider community.

## Connection | Engagement | Environment

### Connection

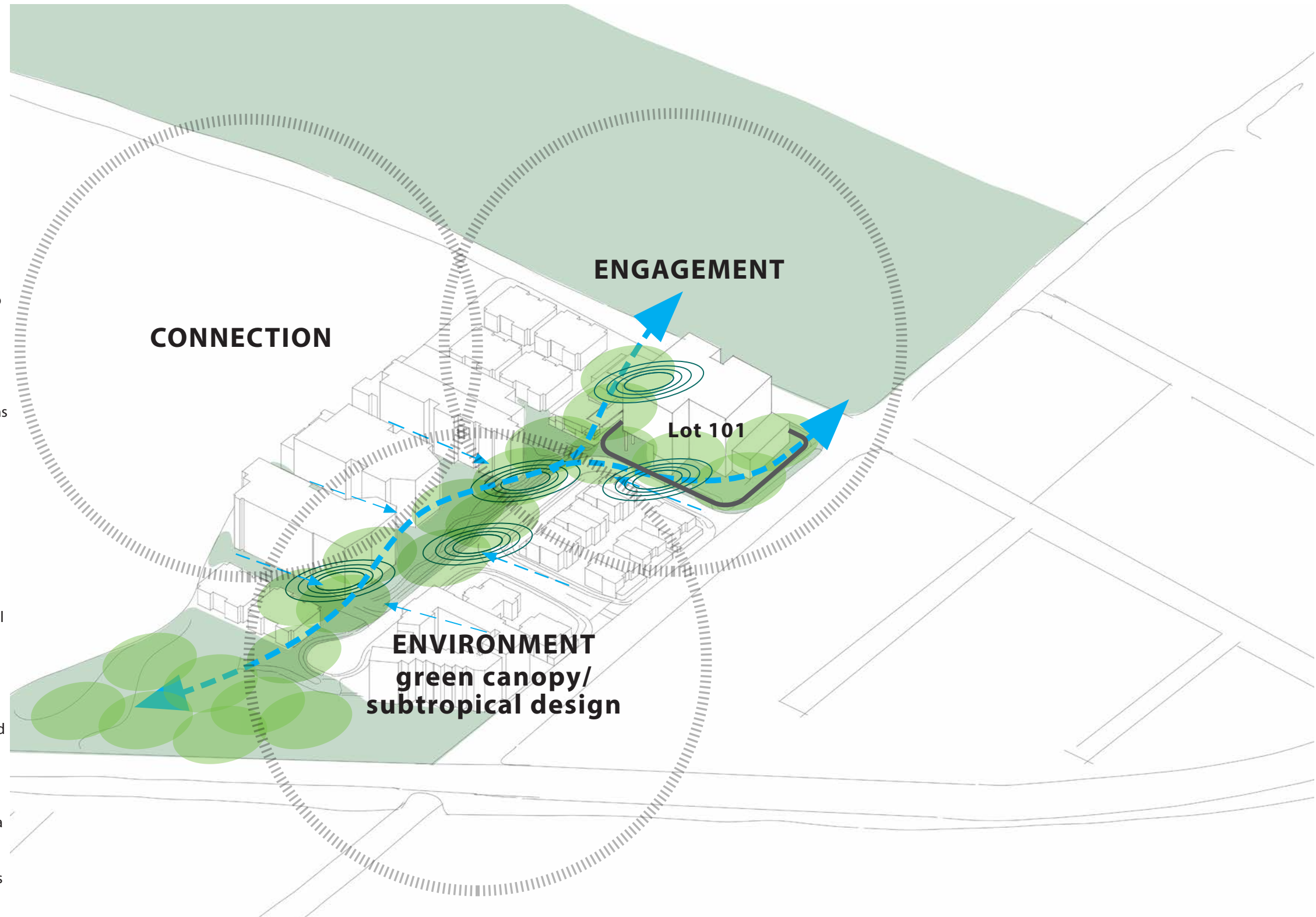
The landscape design at establishes a seamless link between the neighbourhood through a green spine that connects directly to Yeronga Memorial Park and reveals expansive Brisbane city views. Tree-lined avenues like Honour Avenue's fig trees and the sculptural palm walk reinforce civic and memorial identity, anchoring the site in its historical and cultural context. Accessible pedestrian routes ensure intuitive movement through Lot 101 and into surrounding parklands, offering both physical and visual connection.

### Engagement

Interactive, community-focused spaces invite daily participation and meaningful use. interactive gardens with herb gardens, fruit trees, and bush tucker planting create opportunities for shared learning, harvesting, and intergenerational activity. These gardens are strategically located along the central spine to support wayfinding and encourage casual encounters between neighbours. Small seating areas and gathering nodes provide space for rest, conversation, and informal gatherings — activating the landscape as a social connector. Engagement is driven by both activity and curiosity, supported by interpretive planting and tactile, edible, and seasonal garden experiences.

### Environment

The landscape embraces the subtropical identity of Yeronga through layered and climate-responsive planting. Ficus microcarpa hillii, Livistona decora, and Grevillea species provide shade, texture and habitat, while subtropical garden rooms offer cool, green spaces for retreat. Zones of bush tucker planting and spectacle gardens showcase biodiversity and seasonal interest, drawing inspiration from local flora and First Nations knowledge systems. Sustainability is embedded through low-maintenance plant palettes, emphasis on native species. These elements collectively support the urban cooling effect.



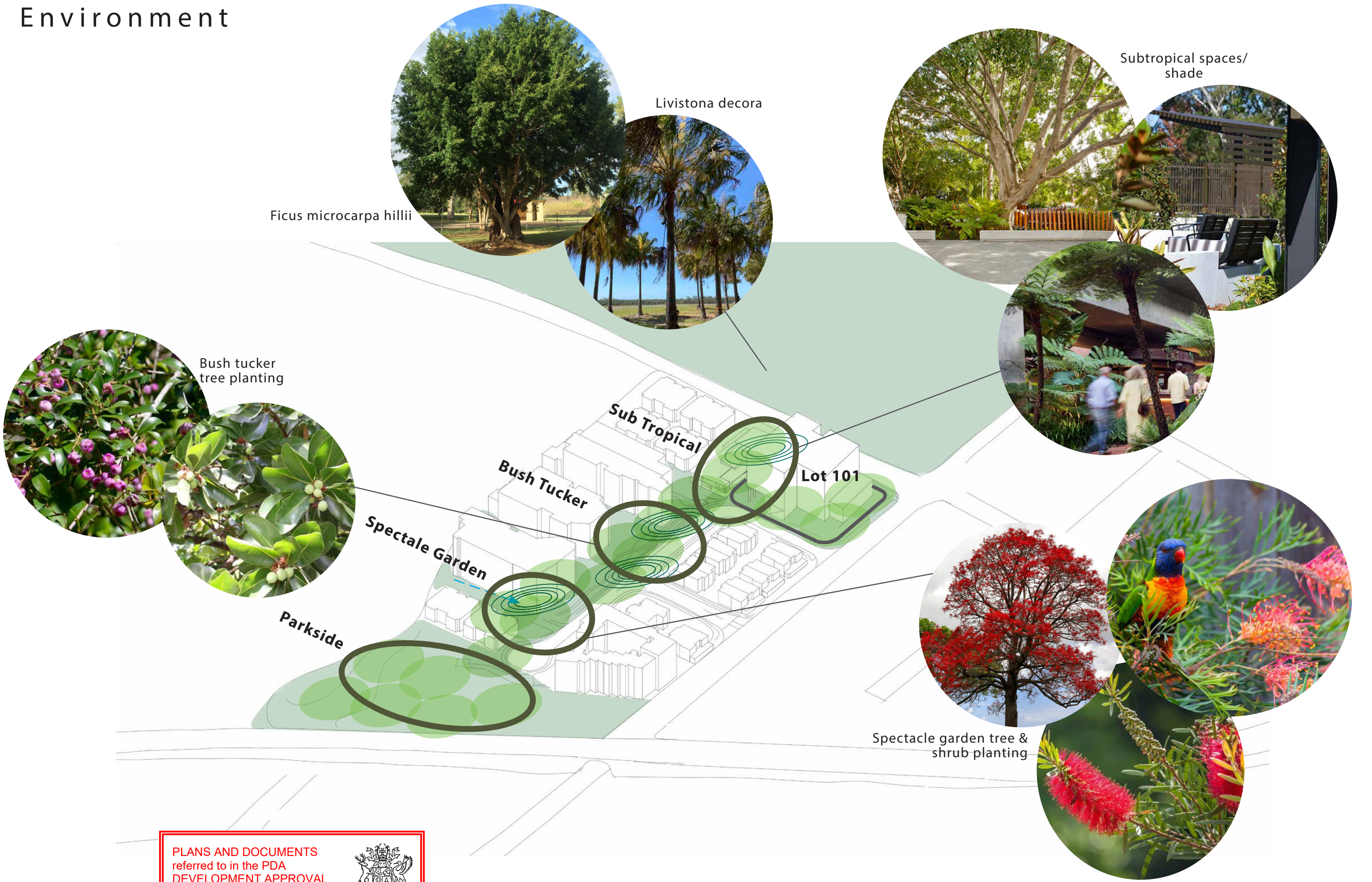


# Connection





Environment



PLANS AND DOCUMENTS  
referred to in the PDA  
DEVELOPMENT APPROVAL

Approval no: DEV2025/1674  
Date: 15 September 2025

Queensland  
Government



# Engagement

The interactive garden design will create a dynamic, engaging spaces that invite people to connect with nature through sensory and participatory experiences. This approach will incorporate elements like traditional herbs to pick, interpretive signage, paving patterns and planting species to touch, feel and interact with. Creating gardens which go beyond simply looking at, it can foster opportunities for human interaction and deeper appreciation for ecology, promote well-being, and create inclusive environments for all ages. The gardens could evolve with the seasons and respond to the needs of the community.

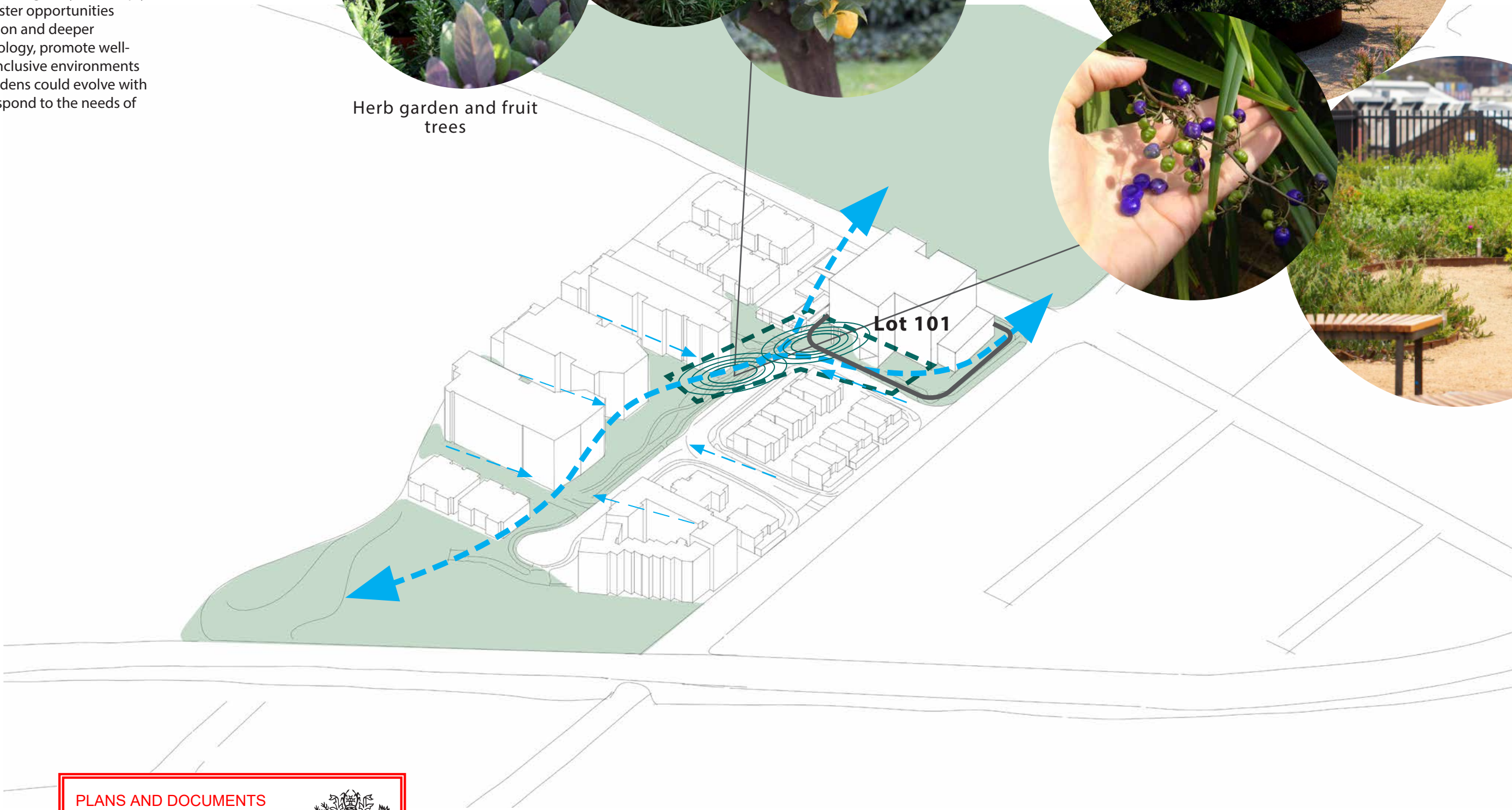
## Interactive Gardens



Herb garden and fruit trees



Sustainable bush tucker species





# 5.0 Landscape Design Intent

The landscape design intent is to create a highly activated public realm anchored by two distinct plaza spaces adjacent to Villa Street and Currawong Crescent. Each plaza offers a unique identity designed with curved forms to create spaces that look inwards to foster opportunities for community interaction and connection. These plazas feature generous seating opportunities through integrated walls and benches, providing shaded places to sit, gather, and engage. Clear wayfinding will be established through accessible ramps and stairs, enabling intuitive navigation across the site's level changes. At the centre of the site, a large seating terrace is directly connected to the community centre, offering a welcoming gathering space with expansive district views. High-canopy trees and shaded undercroft areas with sub-tropical planting will frame visual connections through the landscape, balancing openness with comfort and enhancing the site's overall legibility and usability.

## Topography and Natural Forms

Inspired by the natural topography of the site, the design integrates curved paths and seating walls. These elements guide movement and define spaces, creating a sense of rhythm and openness while softening the urban environment. The curved seating walls will create playful and adaptable spaces to rest, sit or gather together.

## Interactive Planting

Tactile, aromatic and edible plants such as rosemary and native herbs will be introduced to engage the senses and invite exploration. The planting will provide opportunities for informal community connection in the landscape — aligning with SEQ's outdoor lifestyle.

## Shelter and Microclimate

The shade structure in Currawong Crescent Plaza, broad shade trees and layered planting will reduce radiant heat and enhance usability throughout the day. Materials and structures will be selected for durability and low maintenance under subtropical conditions.

## Comfort and Seating

Benches will be designed with comfort considerations and placed to take advantage of shade from existing trees, building overhang and shelter from western sun where possible. This will support opportunities for lingering, gathering, and socialising in a relaxed setting.

## Shade and Canopy

Existing mature trees will be retained and celebrated, providing vital shade and habitat. New tree planting will be selected for clear trunk, canopy spread, climate resilience, and contribution to SEQ's subtropical identity — including species like Lophostemon, and Tristaniopsis that offer structure, shade, and seasonal interest.

## Sustainable and Regional Planting Palette

The planting strategy will favour sub-tropical low-maintenance, drought-tolerant species adapted to SEQ's climate. A mix of native grasses, groundcovers, and flowering shrubs will provide visual appeal, habitat value, and water efficiency. Seasonal colour and texture will ensure the landscape is dynamic year-round.



FLOWING FORMS



SEAT WALLS



COMFORT



EPIPHYTIC



SEASONAL



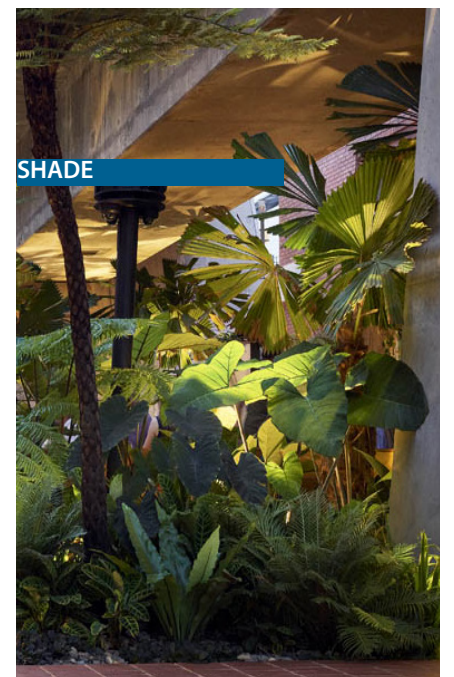
SUB TROPICAL



SHELTER



INTERACTIVE



SHADE

PLANS AND DOCUMENTS  
referred to in the PDA  
DEVELOPMENT APPROVAL

Approval no: DEV2025/1674

Date: 15 September 2025



Queensland  
Government



## LEGEND

- ① SEATING WALL - INSITU CONCRETE
- ② PLANTING
- ③ SCREEN PLANTING
- ④ LANDSCAPE TERRACES SANDSTONE WALLS
- ⑤ RAMP & HANDRAIL
- ⑥ STAIR
- ⑦ FALL HEIGHT BALUSTRADE WITH TOP RAIL
- ⑧ RETAINING WALL WITH FALL HEIGHT BARRIER
- ⑨ EXISTING HOOP PINES TO BE RETAINED
- ⑩ ARCHITECTURAL COLUMN
- ⑪ TERRACE WITH CITY VIEWS
- ⑫ BIN STORE
- ⑬ 1.8m STREETSCAPE PATH
- ⑭ APPLIED TREATMENT TO PAVEMENT CONNECTION TO GREEN SPINE
- ⑮ DRIVEWAY PAVEMENT SURFACE TREATMENT
- ⑯ WAYFINDING SIGNAGE
- PLAZA AREA
- - - PROPERTY BOUNDARY

PARK ROAD

MODEL  
TRAIN  
CLUB

COMMUNITY  
CENTRE

PMT

LOWER PLAZA  
130m<sup>2</sup>

UPPER PLAZA  
253m<sup>2</sup>

+RL18.00

+RL19.143

+RL18.54

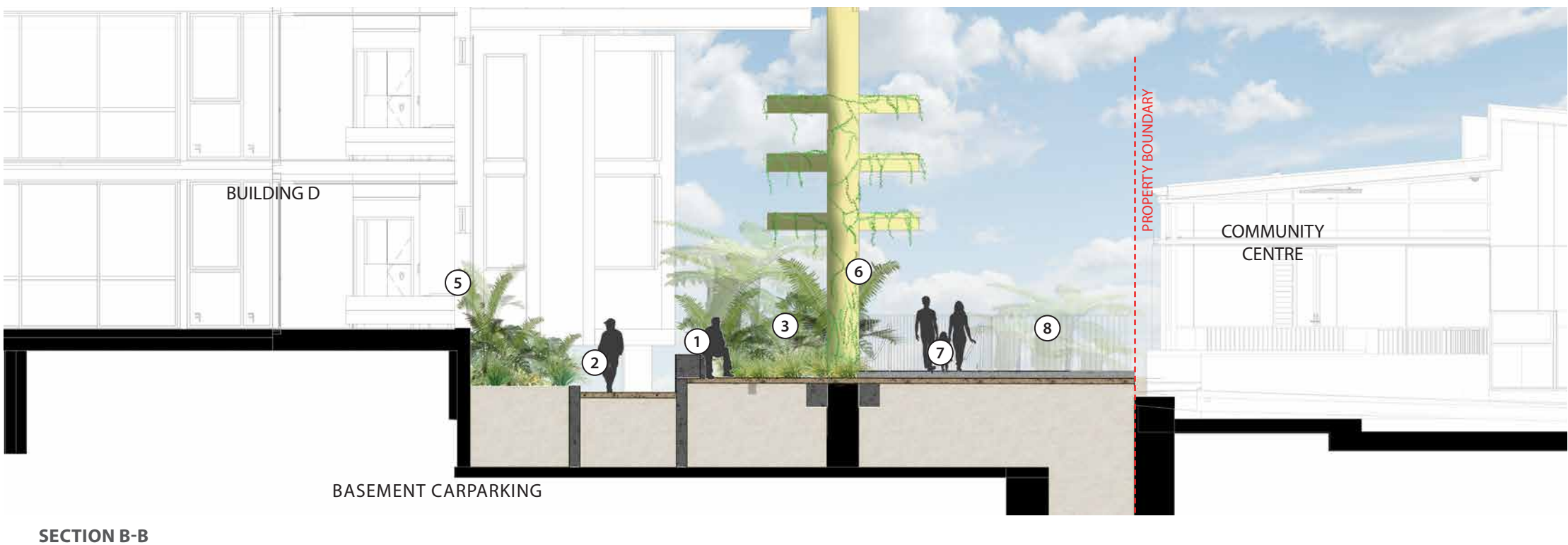
+RL20.010

+RL20.95

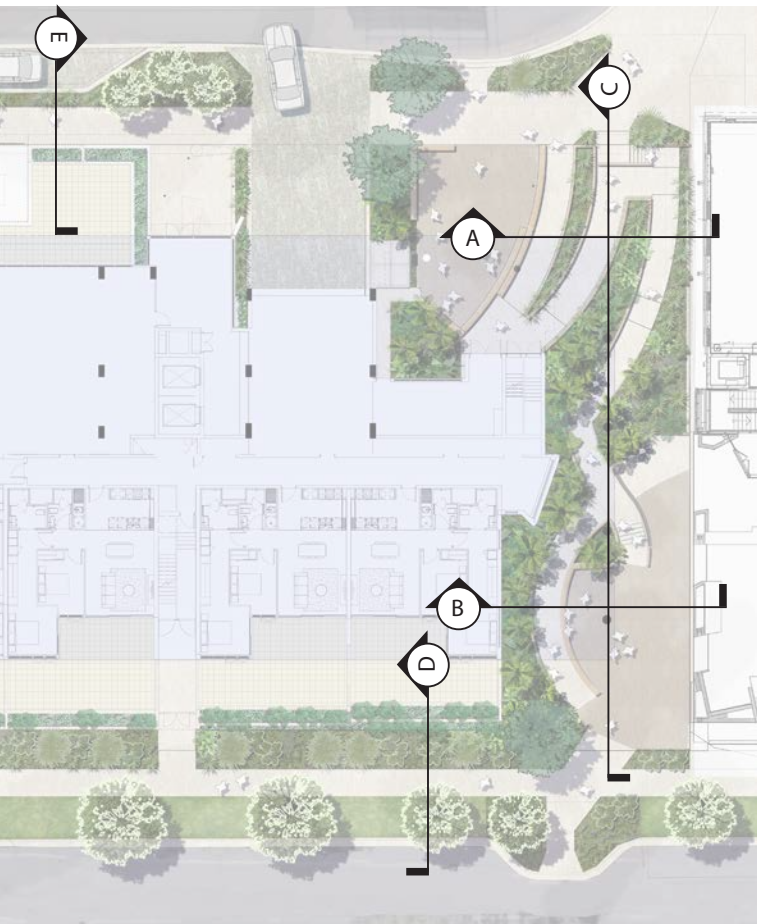
VILLA STREET



# 7.0 Landscape Sections

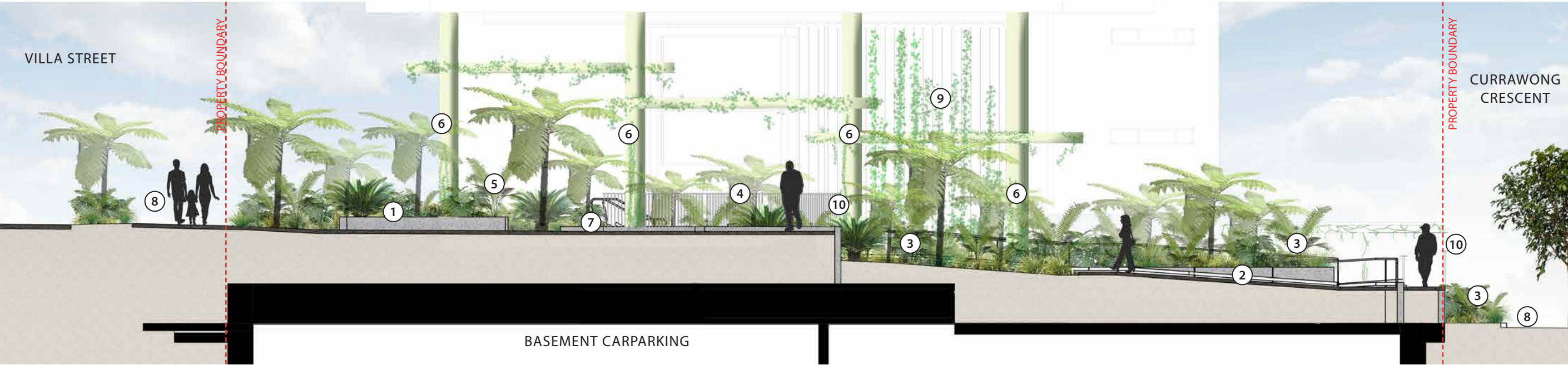


- LEGEND**
- ① SEATING WALL
  - ② 1:20 RAMP
  - ③ SUB-TROPICAL PLANTING
  - ④ RETAINING WALL WITH FALL HEIGHT BARRIER
  - ⑤ SCREEN PLANTING
  - ⑥ ARCHITECTURAL COLUMN WITH CLIMBERS
  - ⑦ STAIR CONNECTION
  - ⑧ TERRACE WITH CITY VIEWS
  - ⑨ 1:15 RAMP WITH HANDRAILS

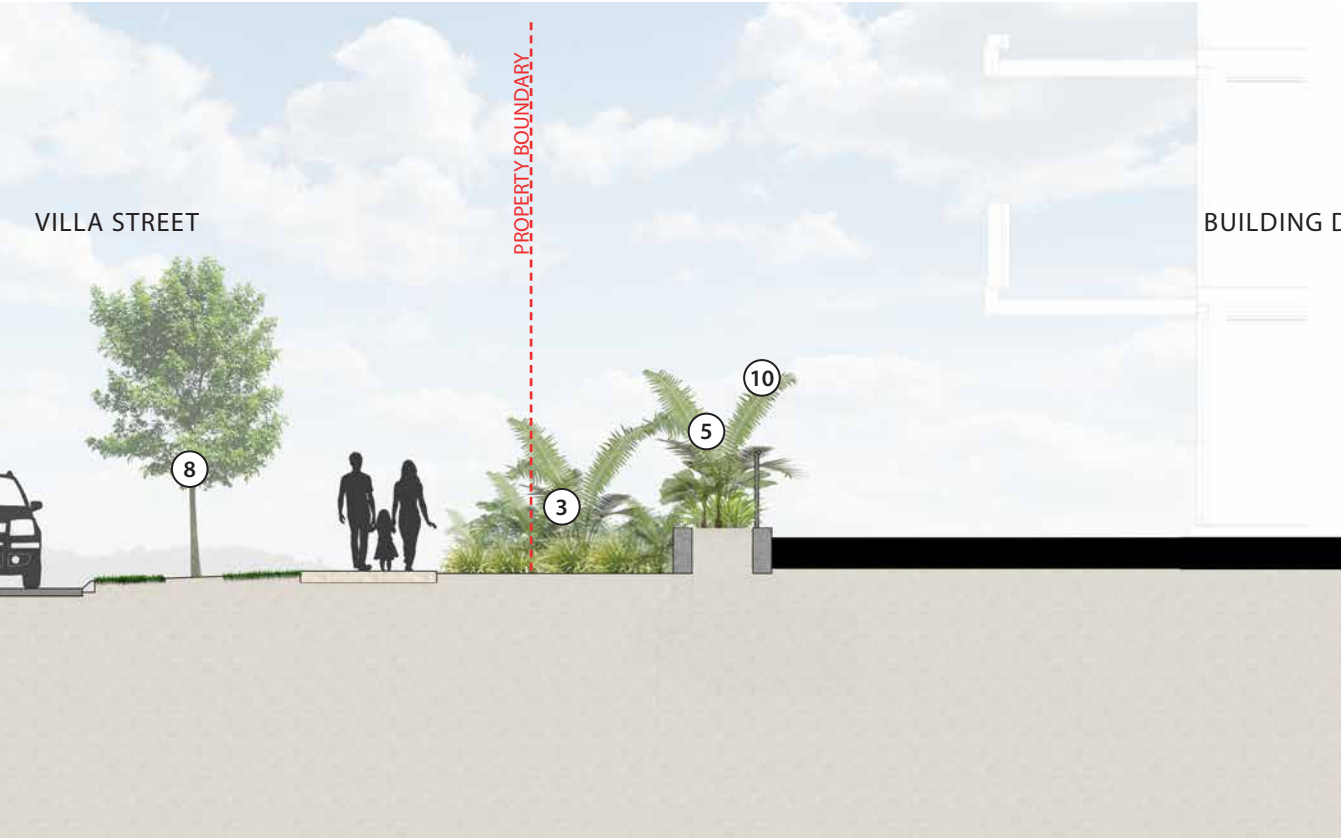




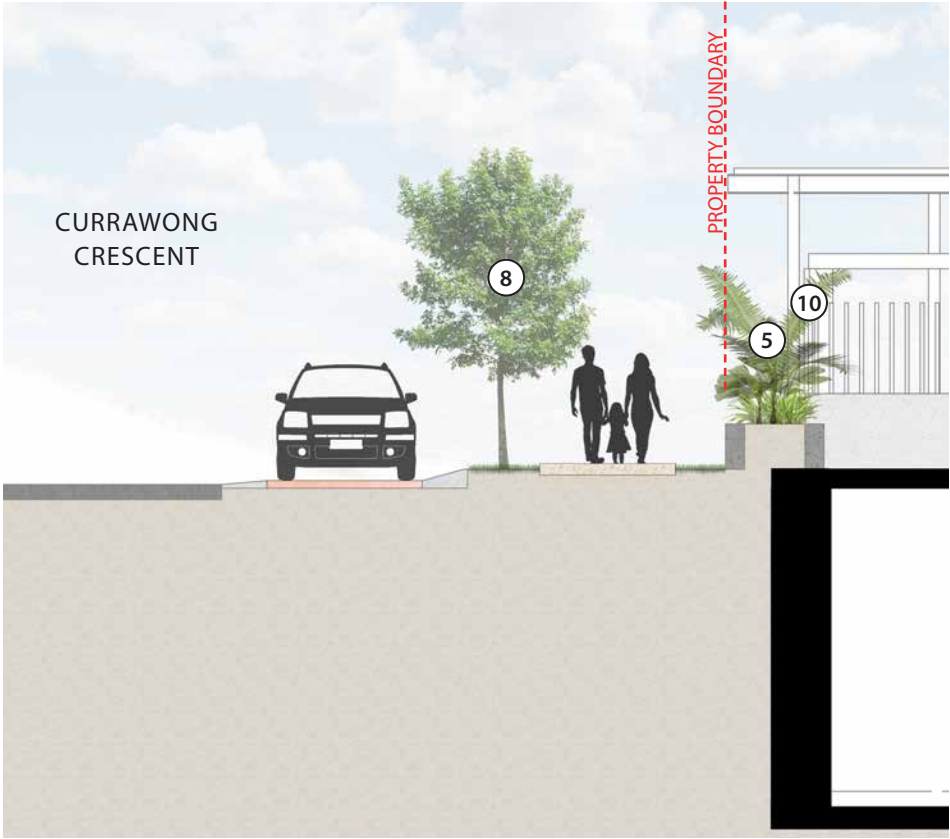
# 8.0 Landscape Sections



SECTION C-C



SECTION D-D

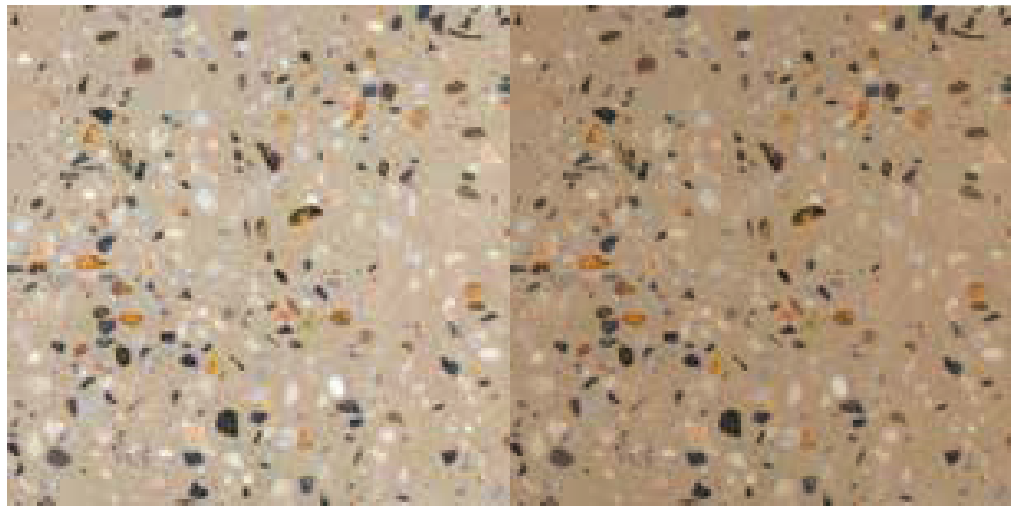


SECTION E-E

- LEGEND**
- ① SEATING WALL
  - ② 1:15 RAMP & HANDRAIL
  - ③ SUB-TROPICAL PLANTING
  - ④ VIEWING TERRACE WITH FALL HEIGHT BALUSTRADE WITH TOP RAIL
  - ⑤ SCREEN PLANTING
  - ⑥ ARCHITECTURAL COLUMN AND TRELLIS WITH CLIMBING VINES
  - ⑦ STAIR
  - ⑧ STREETSCAPE
  - ⑨ CLIMBING VINES TO TRELLIS ON WALL
  - ⑩ BALUSTRADE



# 9.0 Materials Palette



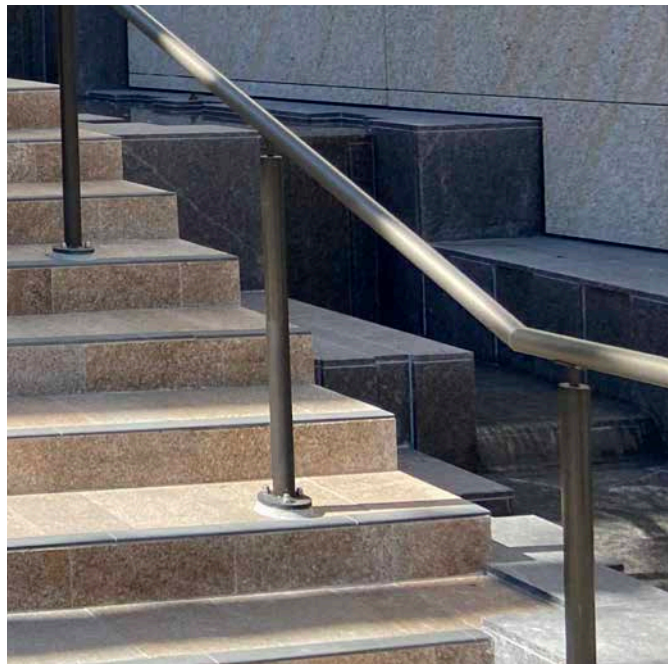
PLAZA, RAMP AND WALKWAY PAVEMENT  
Exposed insitu coloured concrete to match green spine



TACTILE GROUND SURFACE INDICATORS (TGSIs)  
300x300mm concrete paver - Chelmstone precast concrete hazard TGSi



SEATING WALLS  
Instiu concrete seat with honed top and  
anti skate notches



STAIR HANDRAIL  
Powercoat finish to compliment architecture



# 10.0 Planting Palette

TREES & PALMS		
1	<i>Acmena hemilampra</i>	Broad-leaved lilly pilly
2	<i>Cupaniopsis anacardioides</i>	Tuckeroo
3	<i>Cyathea cooperi</i>	Tree fern
4	<i>Elaeocarpus eumundi</i>	Quandong
5	<i>Tristaniopsis laurina</i>	Water Gum
6	<i>Waterhousia floribunda</i>	Weeping Lilly Pilly



SHRUBS		
7	<i>Alcantarea brasiliana</i>	Giant Bromeliad
8	<i>Alpinia nutans</i>	Dwarf Cardomom
9	<i>Asplenium australasicum</i>	Birds Nest Fern
10	<i>Cordyline petiolaris</i>	Broad-leaved Palm Lily
11	<i>Lepidozamia peroffskyana</i>	Scaly Zamia
12	<i>Lomandra longifolia</i>	Spiny-Head Mat-Rush
13	<i>Monstera deliciosa</i>	Swiss Cheese Plant
14	<i>Philodendron xanadu</i>	Xanadu
15	<i>Rhapis excelsa</i>	Fan Palm
16	<i>Strelitzia nicolai</i>	White Bird of Paradise
17	<i>Westringia fruticosa</i>	Coastal Rosemary
18	<i>Zamia furfuracea</i>	Cardboard Palm



Note: Tree planting to be installed at a minium 200ltr pot size.



GROUNDCOVERS		
1	Adiantum aethiopicum	Maidenhair Fern
2	Aspidistra elatior	Cast-iron Plan
3	Blechnum gibbum	Silver Lady Fern
4	Casuarina glauca	Cousin It
5	Gazania tomentosa	Silver Leaf Gazania
6	Hibbertia scandens	Golden Guinea Vine
7	Lomandra fluviatilis 'Shara'	Lomandra Shara
8	Liriope Evergreen Giant	Evergreen Giant
9	Neomarica gracilis	Wandering Iris
10	Plectranthus australis	Swedish Ivy
11	Rosmarinus officinalis	Rosemary
12	Salvia officinalis	Sage
13	Senecio mandraliscae	Blue Chalk Sticks
14	Viola hederacea	Native violet

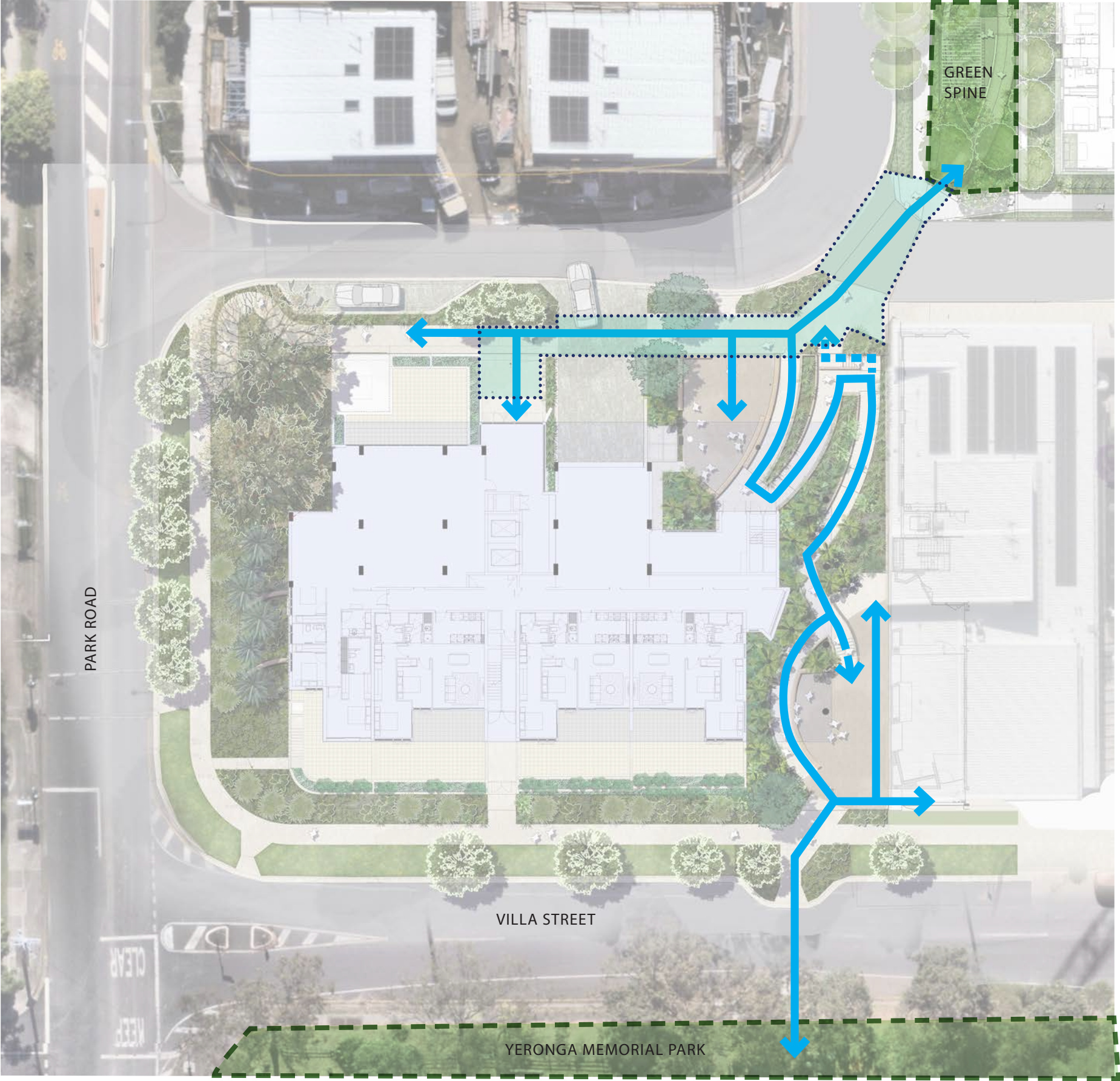






CLIMBERS		
15	Ficus pumila	Climbing Fig
16	Pandorea jasminoides	Bower vine
17	Thunbergia mysorensis	Trumpet vine
18	Trachelospermum jasminoides	Star Jasmine





# 11.0 Movement Strategy



- LEGEND**
-  PRIMARY CIRCULATION  
(DDA COMPLIANT RAMP)
  -  SECONDARY CIRCULATION  
(DDA COMPLIANT STAIR)
  -  OPEN SPACE
  -  APPLIED TREATMENT TO  
PAVEMENT CONNECTION  
TO GREEN SPINE



# 12.0 Landscape area

PLANS AND DOCUMENTS  
referred to in the PDA  
DEVELOPMENT APPROVAL

Approval no: DEV2025/1674

Date: 15 September 2025

