



CONTENTS

| | |
|---------------------------------|-------|
| LOCATION PLAN | SD-02 |
| LANDSCAPE PLAN - GROUND LEVEL | SD-03 |
| LANDSCAPE PLAN - LEVEL 01 | SD-04 |
| LANDSCAPE PLAN - LEVELS 02 - 08 | SD-05 |
| LANDSCAPE PLAN - LEVELS 09 - 11 | SD-06 |
| LANDSCAPE PLAN - ROOFTOP | SD-07 |
| LANDSCAPE ANALYSIS | SD-08 |
| FIRST NATIONS | SD-09 |
| LANDSCAPE SECTIONS | SD-10 |
| LANDSCAPE SECTIONS | SD-11 |
| LANDSCAPE SECTIONS | SD-12 |
| LANDSCAPE SECTIONS | SD-13 |
| LANDSCAPE DETAILS - SOIL DEPTHS | SD-14 |
| PLANTER MAINTENANCE PLAN | SD-15 |
| LANDSCAPE CHARACTER | SD-16 |
| INDICATIVE MATERIALS PALETTE | SD-17 |
| INDICATIVE PLANTING PALETTE | SD-18 |

SCHEMATIC DESIGN

330 MacArthur Ave on part of Lot 6 on SP326594

PLANS AND DOCUMENTS
referred to in the PDA
DEVELOPMENT APPROVAL

Approval no: DEV2024/1581/3
Date: 14/08/2025

Queensland
Government



PLANS AND DOCUMENTS
referred to in the PDA
DEVELOPMENT APPROVAL

Approval no: DEV2024/1581/3

Date: 14/08/2025



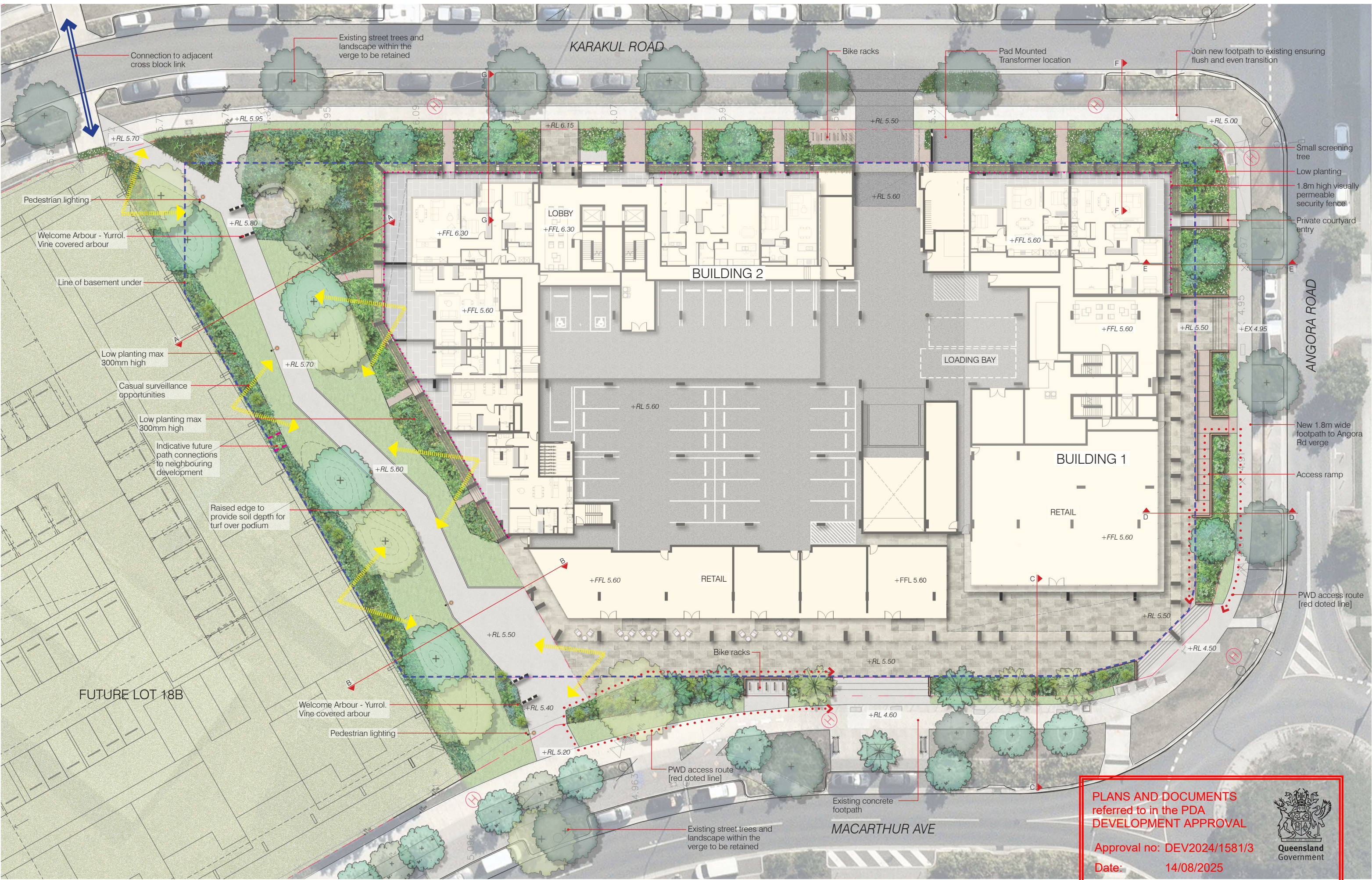
LOCATION PLAN

SCHEMATIC DESIGN | LOT 18A HAMILTON



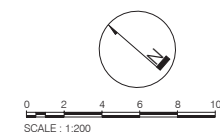
DUNN MORAN
LANDSCAPE ARCHITECTS

2404600 SD-02
2025-07-18 ISSUE C
Copyright by Dunn + Moran Landscape Architects Pty Ltd. This drawing or parts thereof may not be reproduced for any purpose without the consent of Dunn + Moran Landscape Architects.



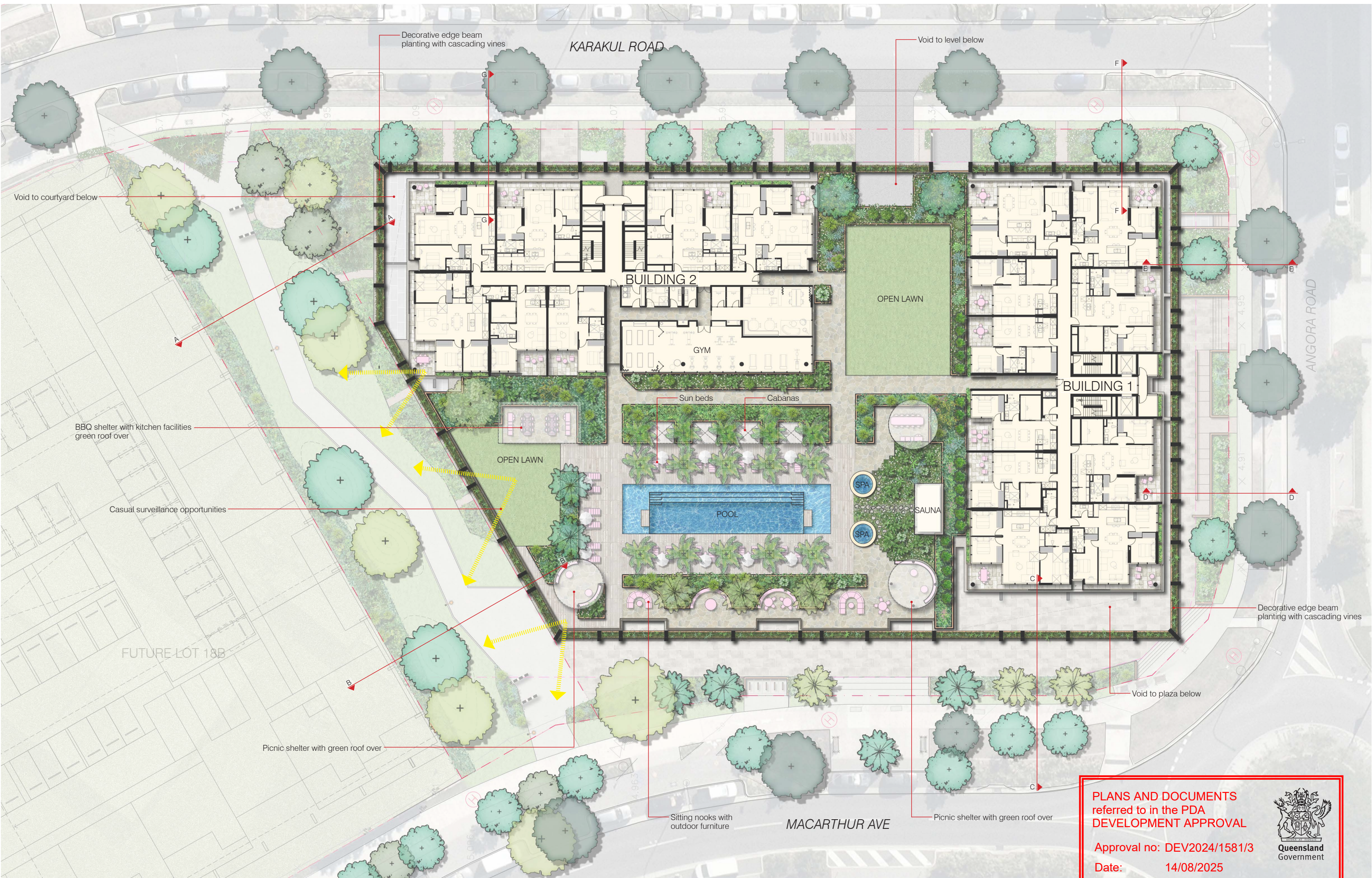
LANDSCAPE PLAN - GROUND LEVEL

SCHEMATIC DESIGN | LOT 18A HAMILTON



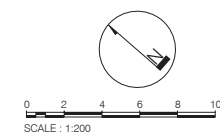
DUNN MORAN
LANDSCAPE ARCHITECTS

2404600 SD-03
2025-07-18 ISSUE C
Copyright by Dunn + Moran Landscape Architects Pty Ltd. This drawing or parts thereof may not be reproduced for any purpose without the consent of Dunn + Moran Landscape Architects.



LANDSCAPE PLAN - LEVEL 01

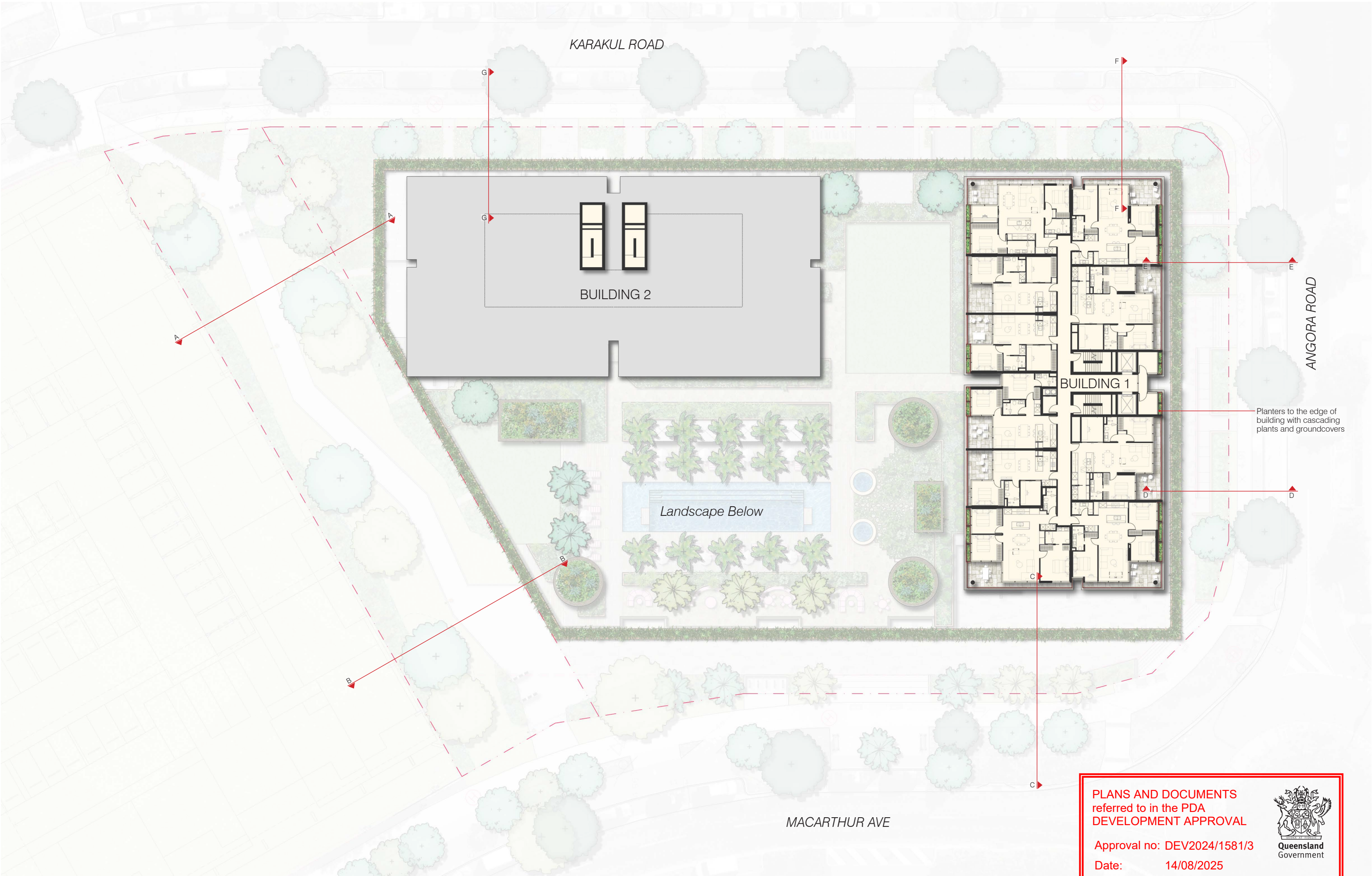
SCHEMATIC DESIGN | LOT 18A HAMILTON



DUNN MORAN
LANDSCAPE ARCHITECTS

2404600 SD-04
2025-07-18 ISSUE C
Copyright by Dunn + Moran Landscape Architects Pty Ltd. This drawing or parts thereof may not be reproduced for any purpose without the consent of Dunn + Moran Landscape Architects.





PLANS AND DOCUMENTS
referred to in the PDA
DEVELOPMENT APPROVAL

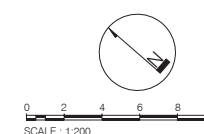
Approval no: DEV2024/1581/3

Date: 14/08/2025

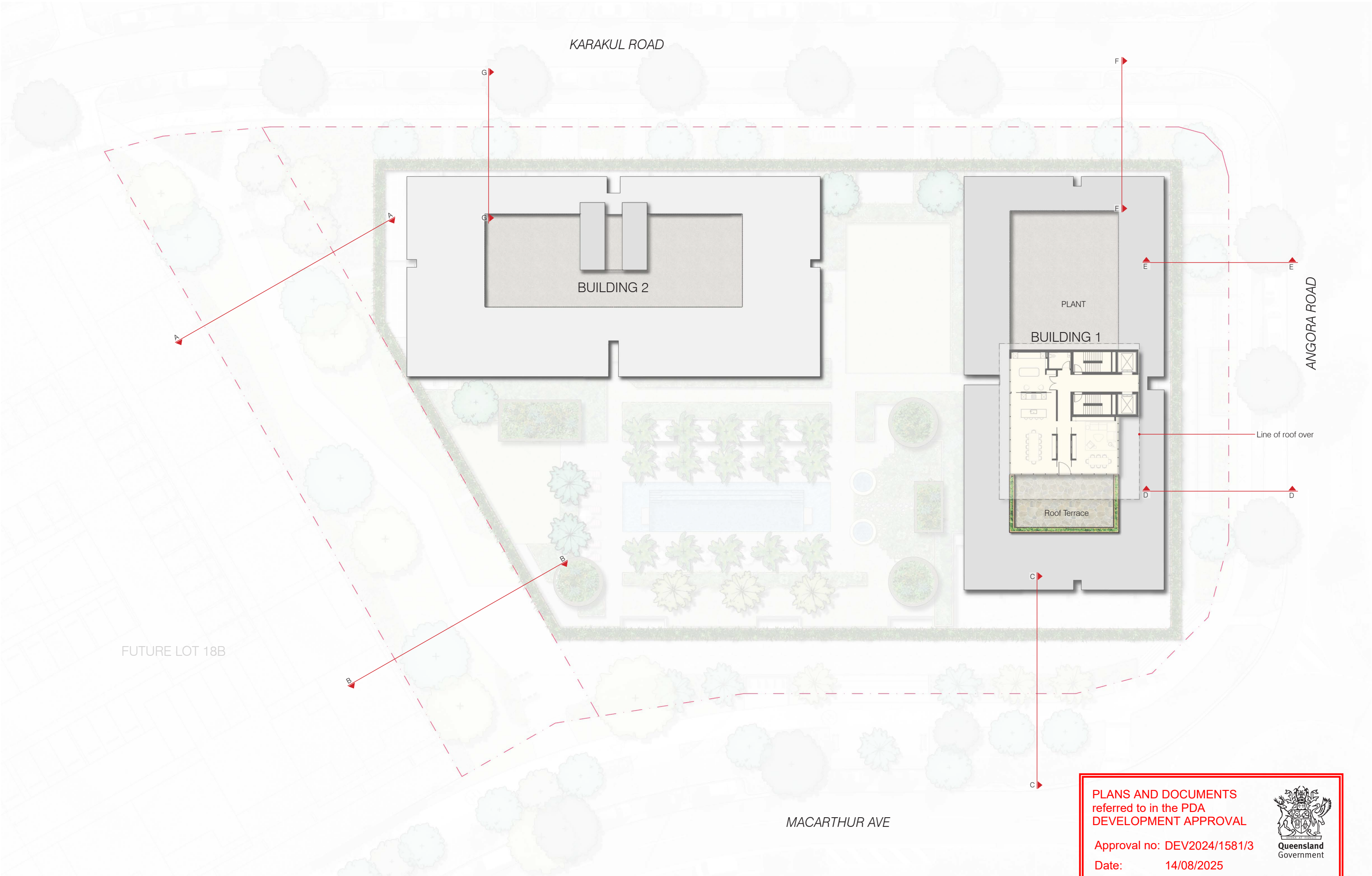


LANDSCAPE PLAN - LEVELS 09 - 11

SCHEMATIC DESIGN | LOT 18A HAMILTON

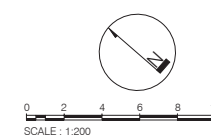


2404600 SD-06
2025-07-18 ISSUE C
Copyright by Dunn + Moran Landscape Architects Pty Ltd. This drawing or parts thereof may not be reproduced for any purpose without the consent of Dunn + Moran Landscape Architects.



LANDSCAPE PLAN - ROOF TERRACE

SCHEMATIC DESIGN | LOT 18A HAMILTON



DUNN MORAN
LANDSCAPE ARCHITECTS

2404600 SD-07
2025-07-18 ISSUE C
Copyright by Dunn + Moran Landscape Architects Pty Ltd. This drawing or parts thereof may not be reproduced for any purpose without the consent of Dunn + Moran Landscape Architects.



LANDSCAPE ANALYSIS

SCHEMATIC DESIGN | LOT 18A HAMILTON



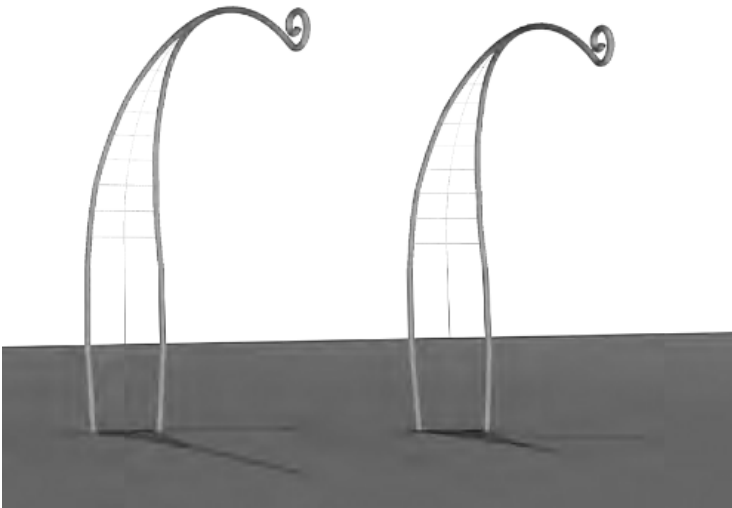
DUNN
MORAN

LANDSCAPE ARCHITECTS

2404600 SD-08
2025-07-18 ISSUE C
Copyright by Dunn + Moran Landscape Architects Pty Ltd. This drawing or parts thereof may not be reproduced for any purpose without the consent of Dunn + Moran Landscape Architects.



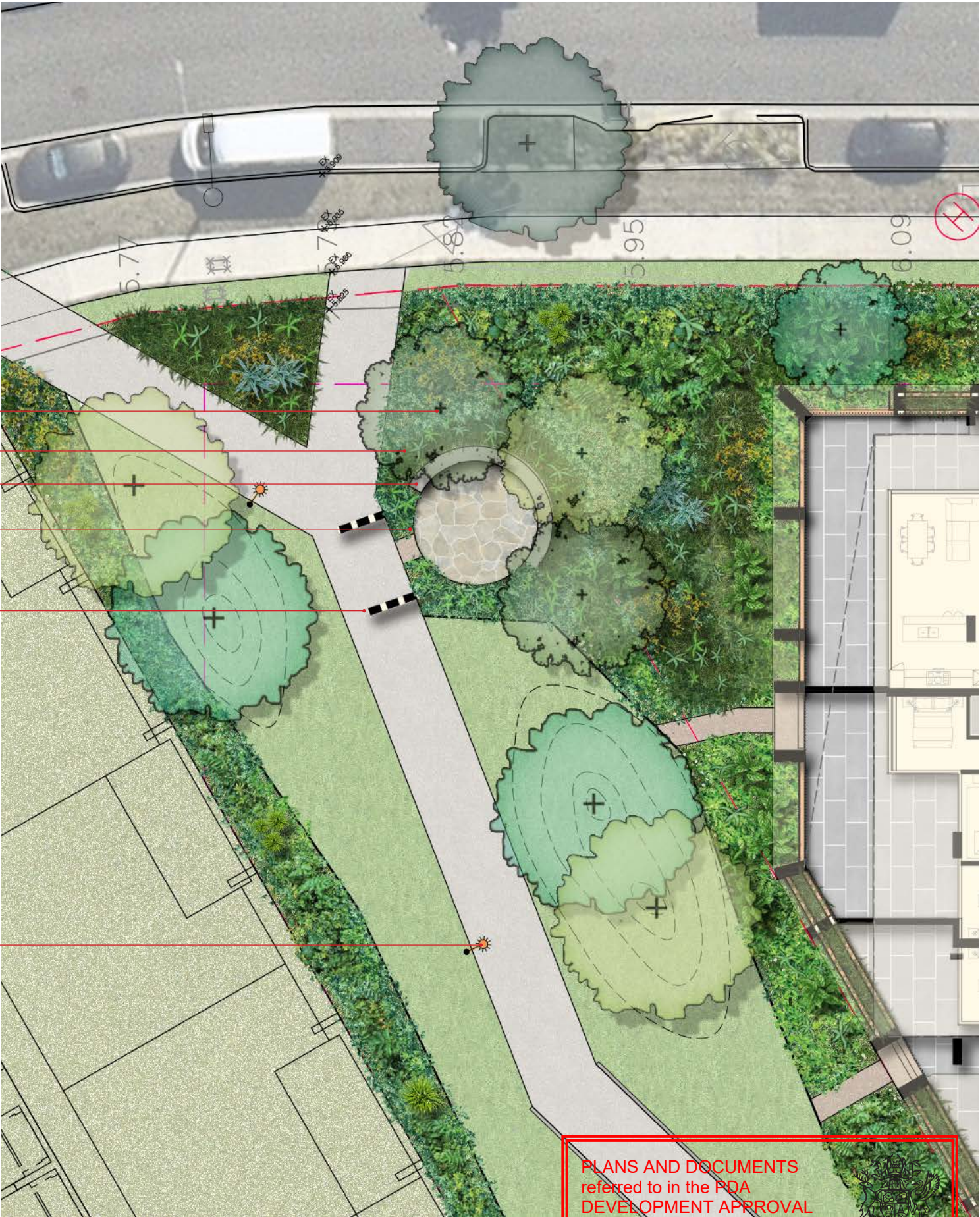
Yurrol Vine (*Flagellaria indica*)



Yurrol arbors
 - 2 x freestanding formed steel tube expressing the Yurrol vine leaf shape
 - Provides support for the Yurrol (*Flagellaria indica*)

- Song Grove with 3 x endemic feature tree species
- Low native groundcover planting
- Sandstone block terraced seating wall
- Interpretive sign location with digital link to indigenous song
- Yurrol vine arbours

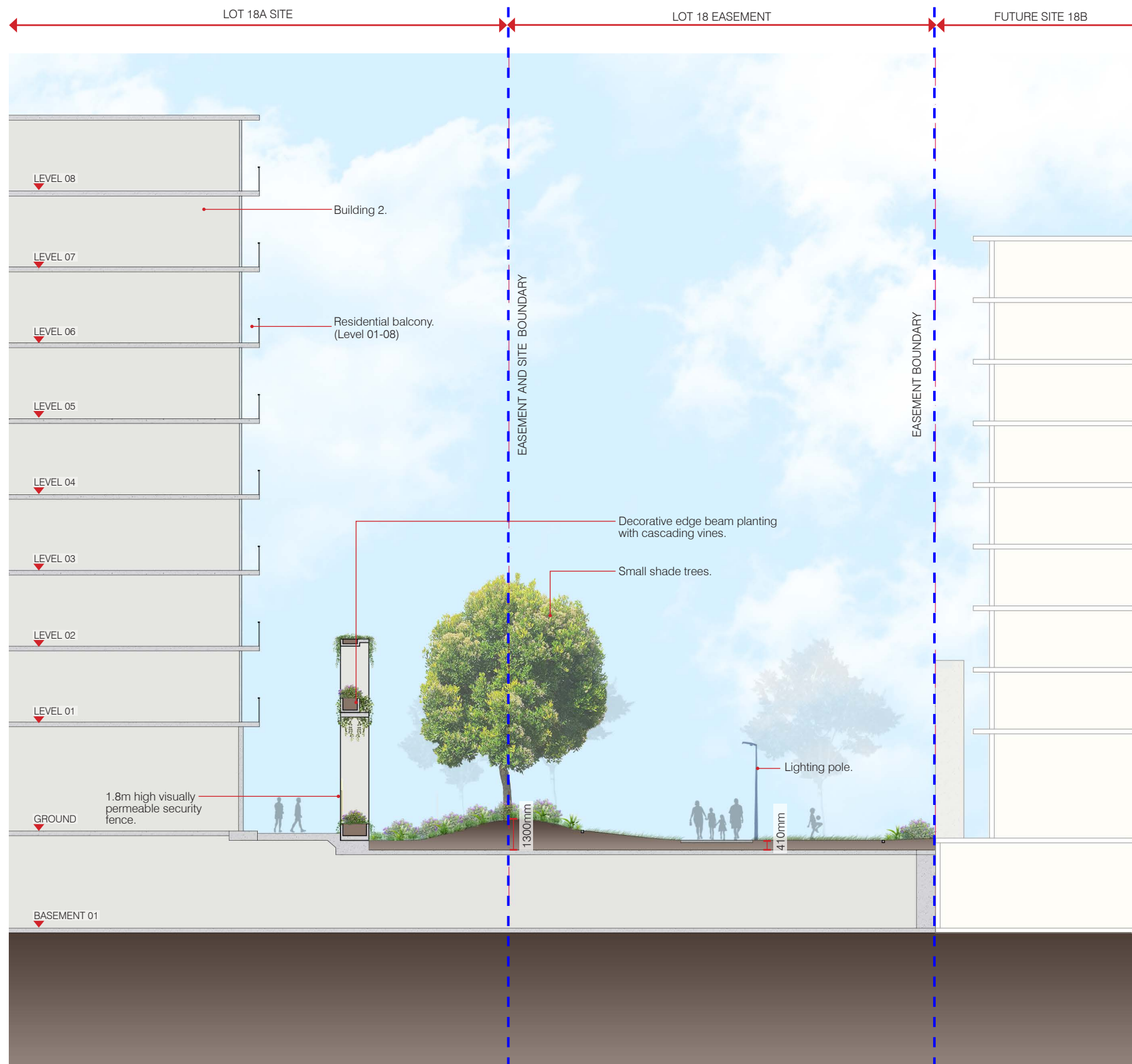
Pedestrian lighting



N.T.S

PLANS AND DOCUMENTS
 referred to in the PDA
 DEVELOPMENT APPROVAL

Approval no: DEV2024/1581/3
 Date: 14/08/2025



SECTION A
1:100 @ A1

PLANS AND DOCUMENTS
referred to in the PDA
DEVELOPMENT APPROVAL

Approval no: DEV2024/1581/3

Date: 14/08/2025



LANDSCAPE SECTIONS

SCHEMATIC DESIGN | LOT 18A HAMILTON

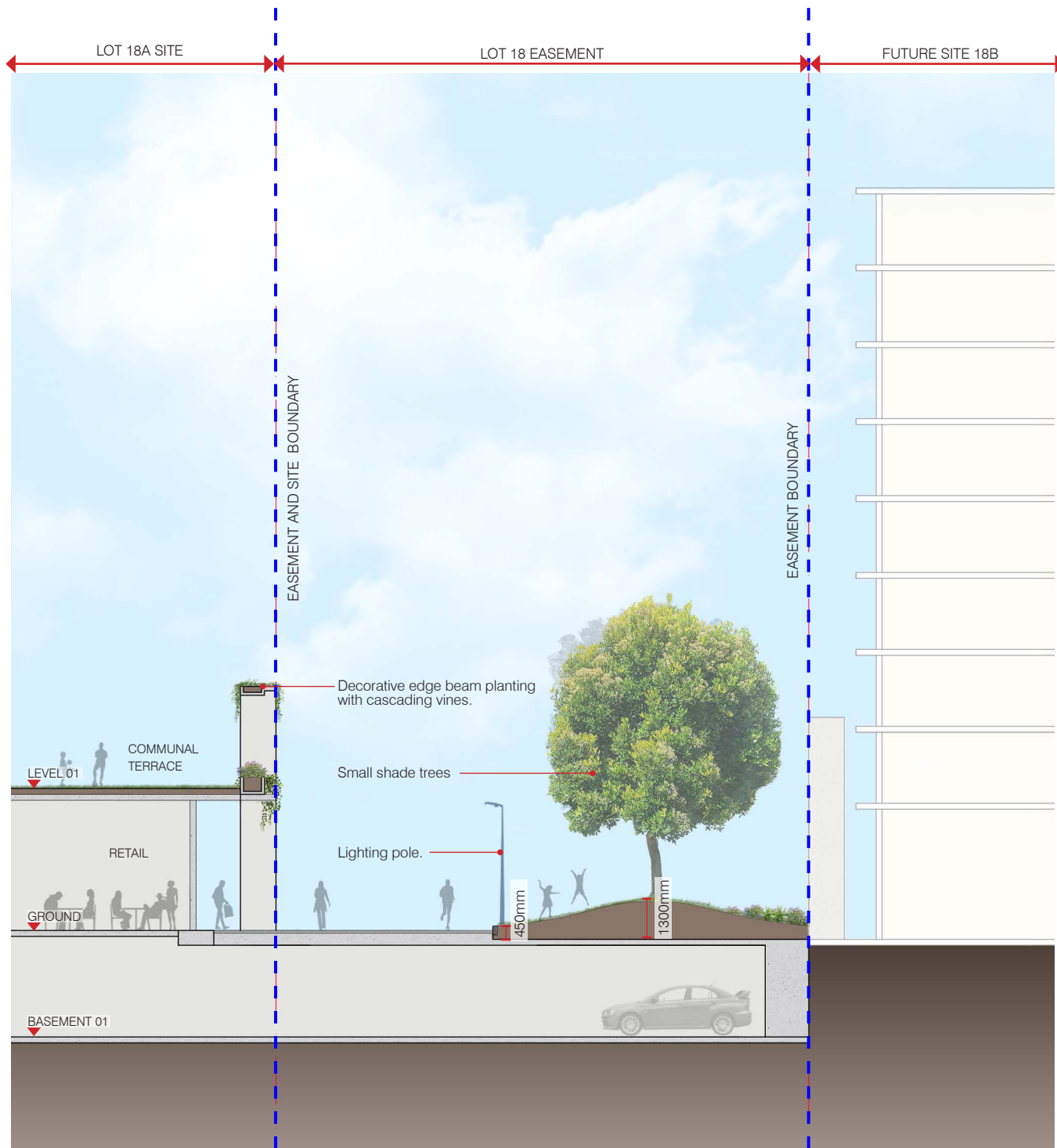
PLANS AND DOCUMENTS
referred to in the PDA
DEVELOPMENT APPROVAL

Approval no: DEV2024/1581/3

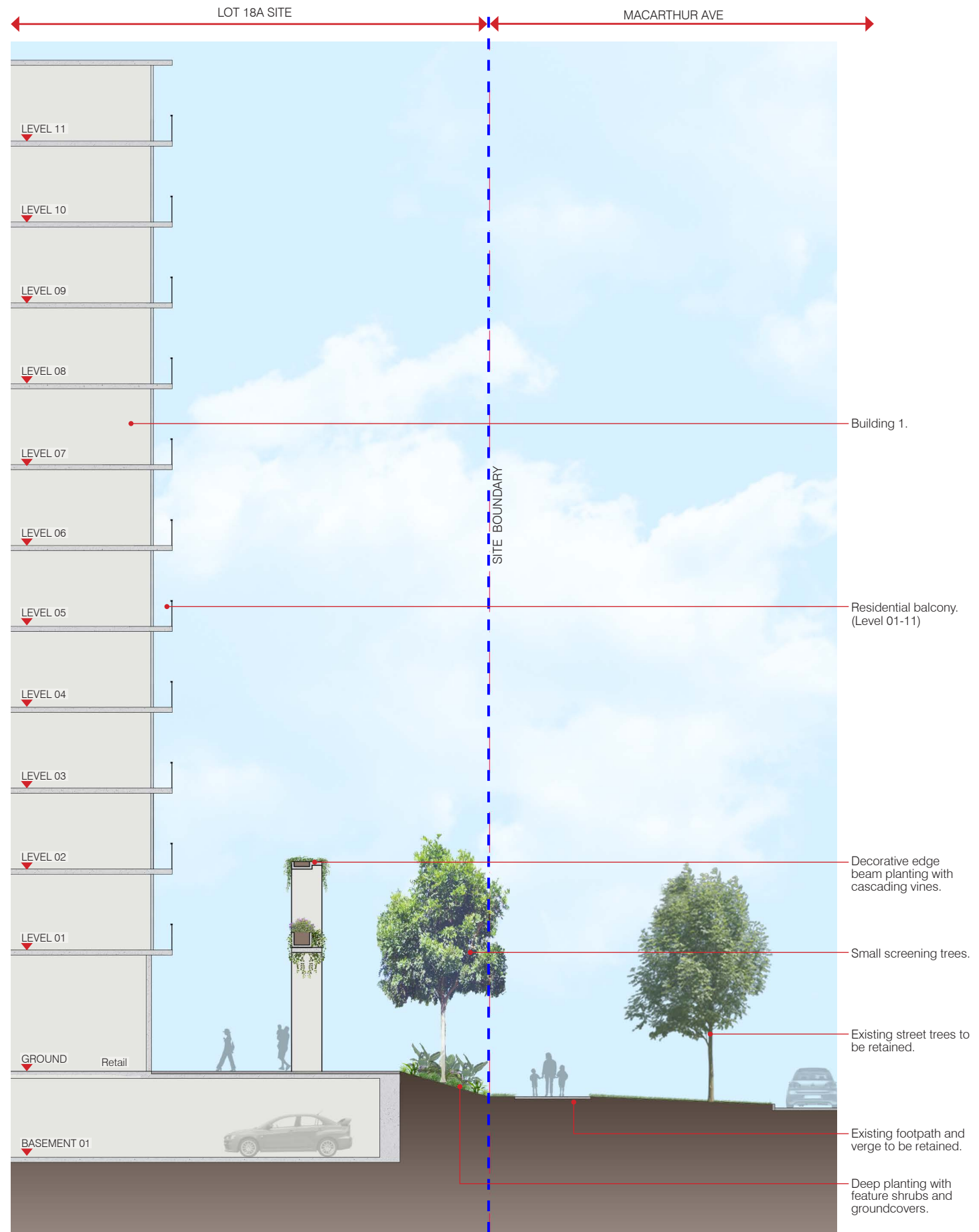
Date: 14/08/2025



Queensland
Government



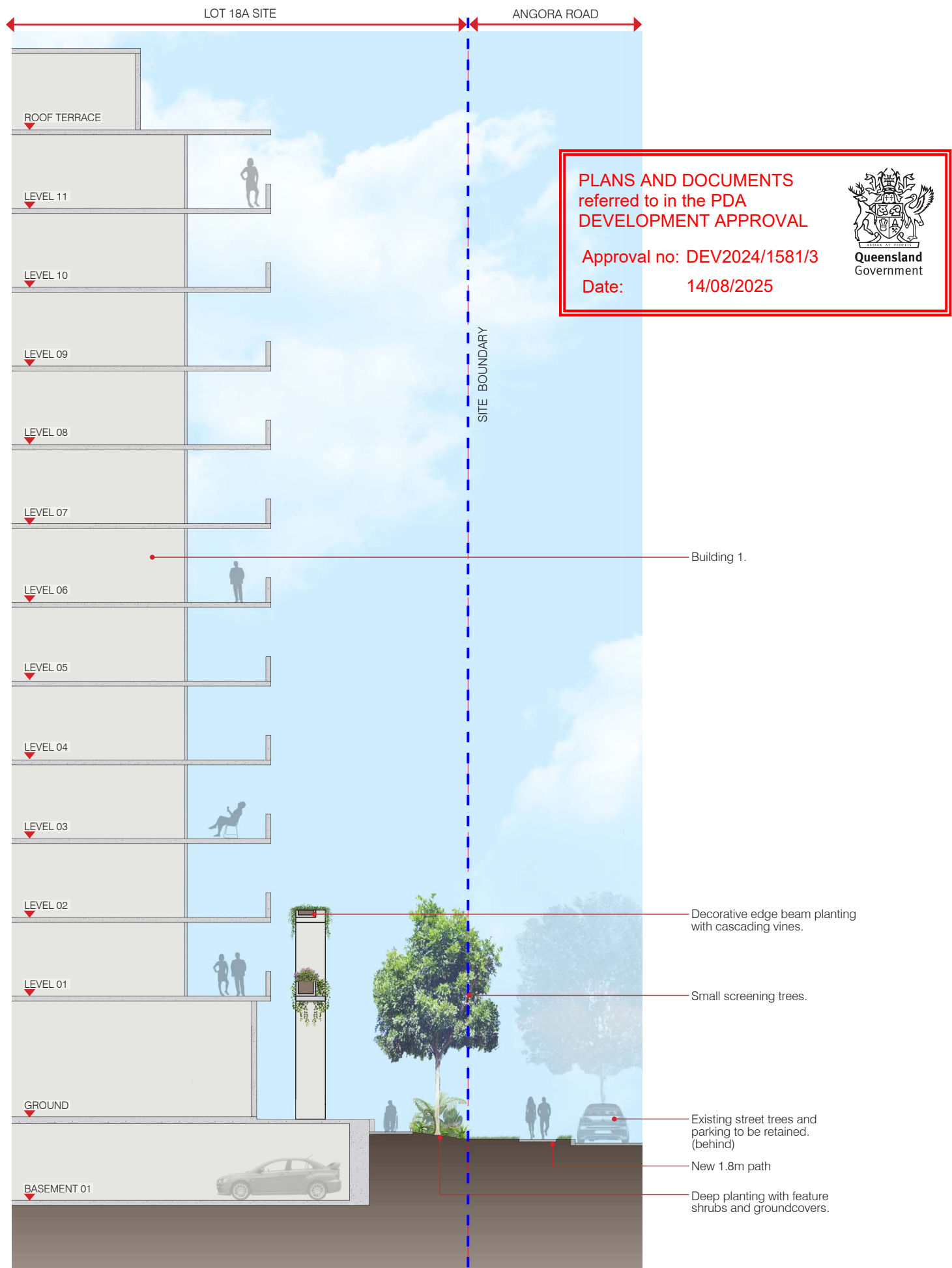
SECTION B
1:100 @ A1



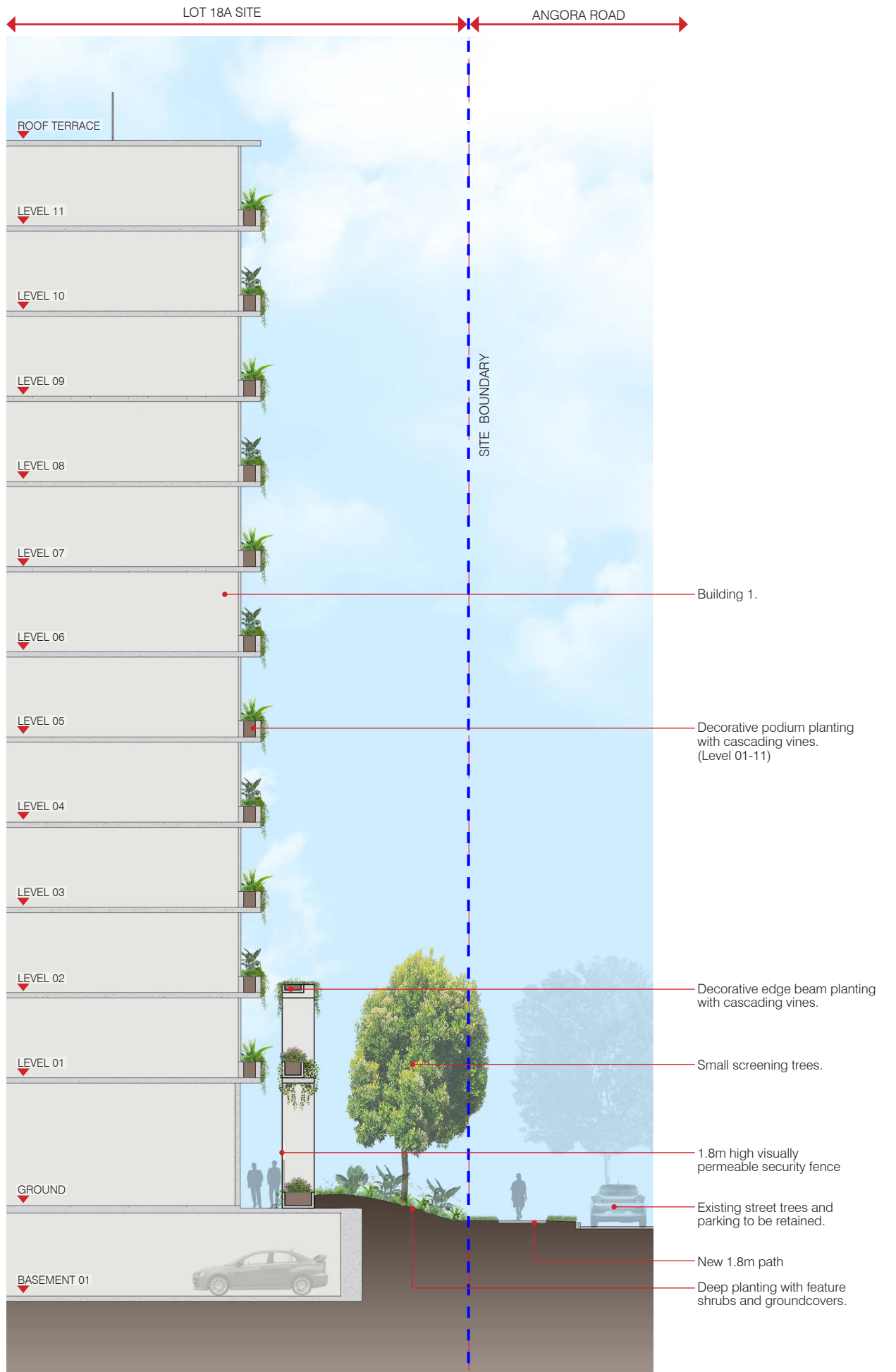
SECTION C
1:100 @ A1

LANDSCAPE SECTIONS

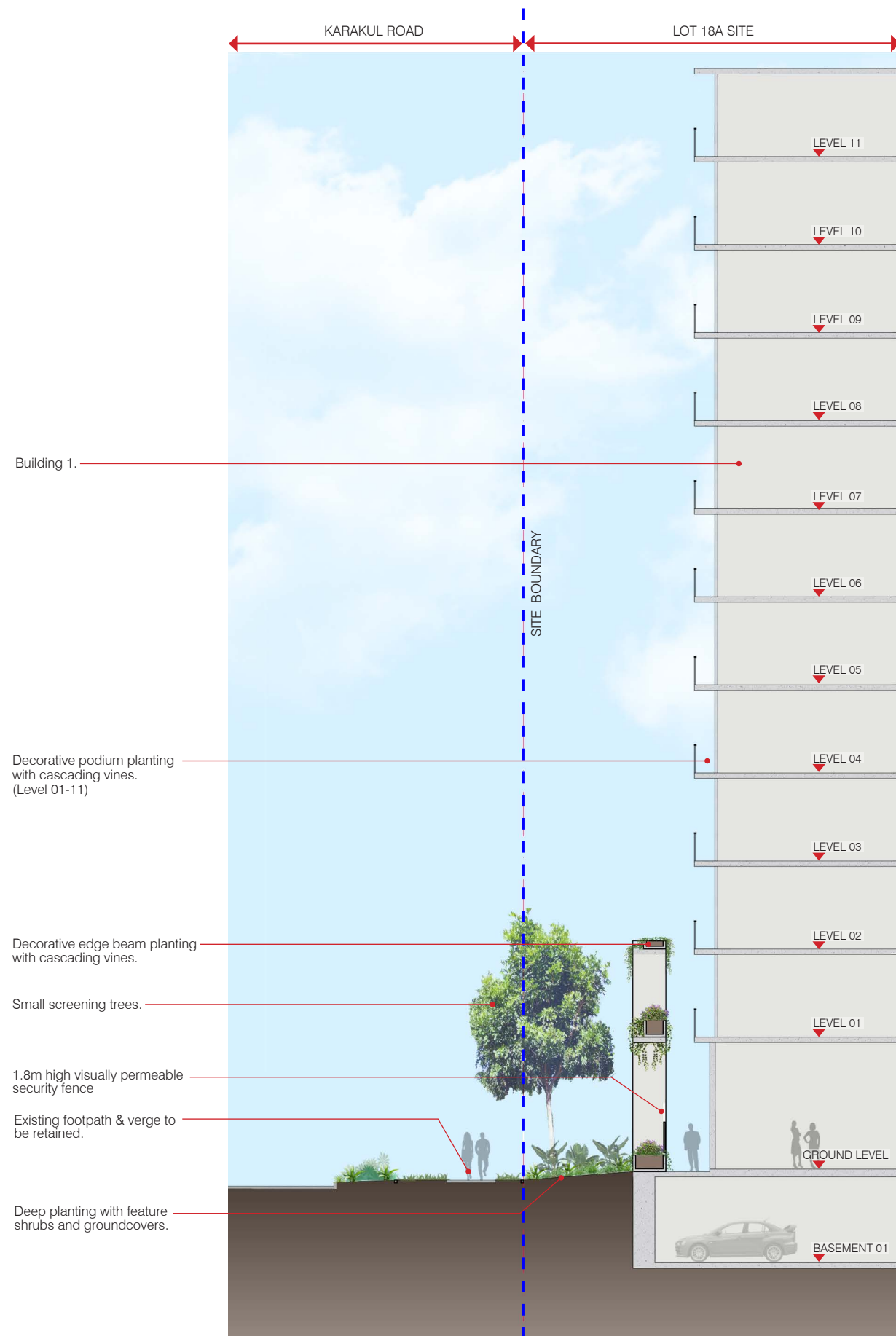
SCHEMATIC DESIGN | LOT 18A HAMILTON



SECTION D
1:100 @ A1




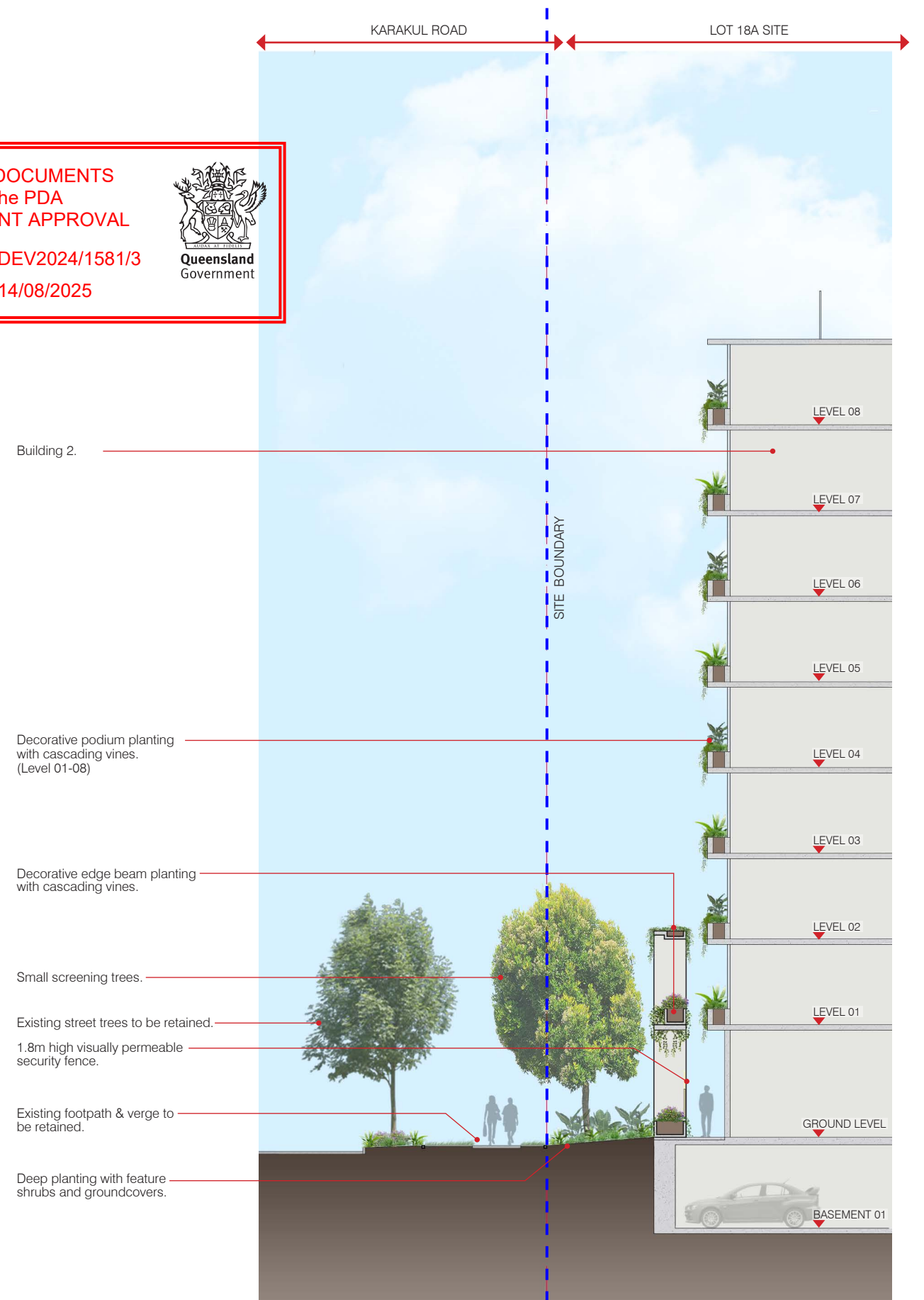
SECTION E
1:100 @ A1



SECTION F
1:100 @ A1

PLANS AND DOCUMENTS
referred to in the PDA
DEVELOPMENT APPROVAL

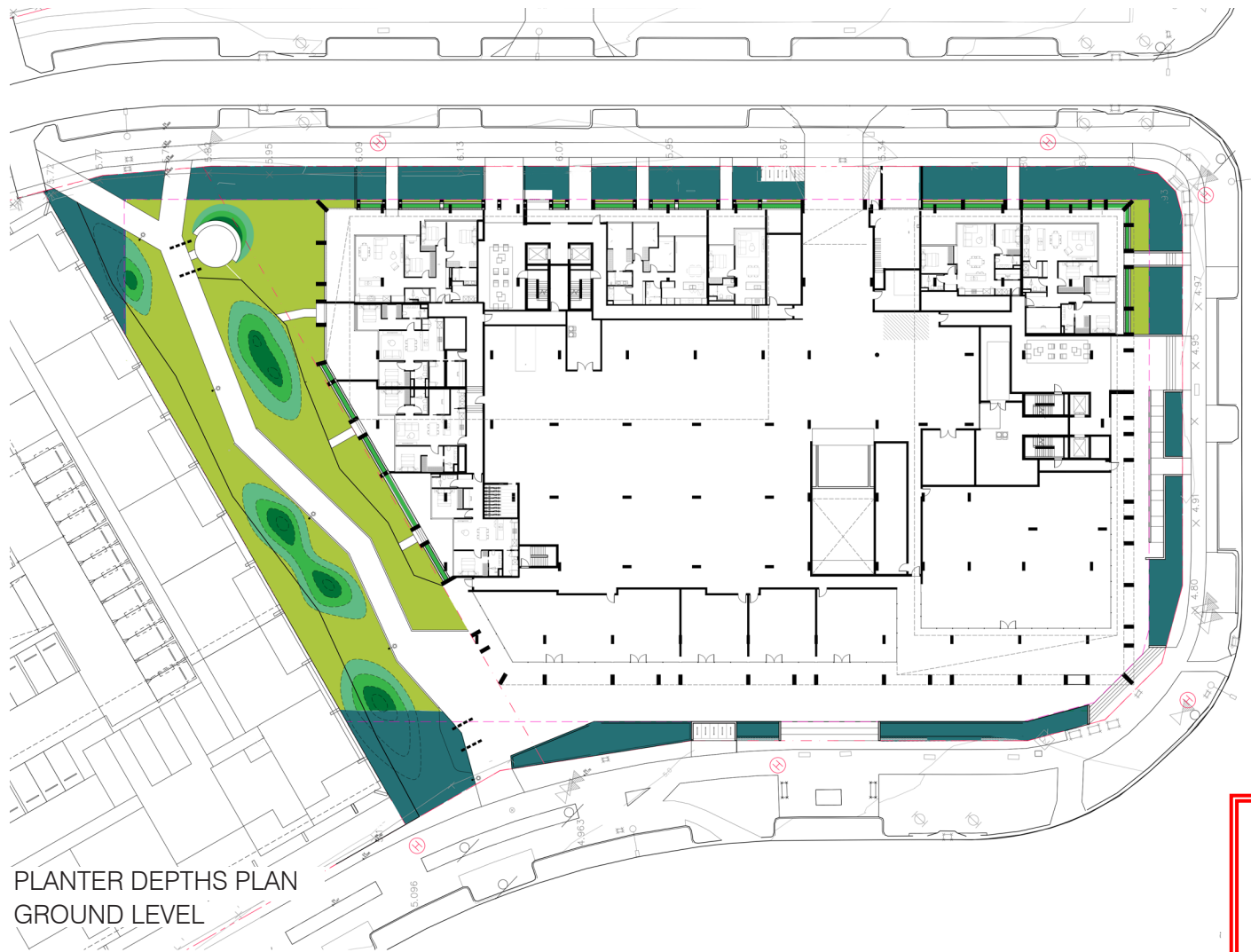
Approval no: DEV2024/1581/3
Date: 14/08/2025

SECTION G
1:100 @ A1

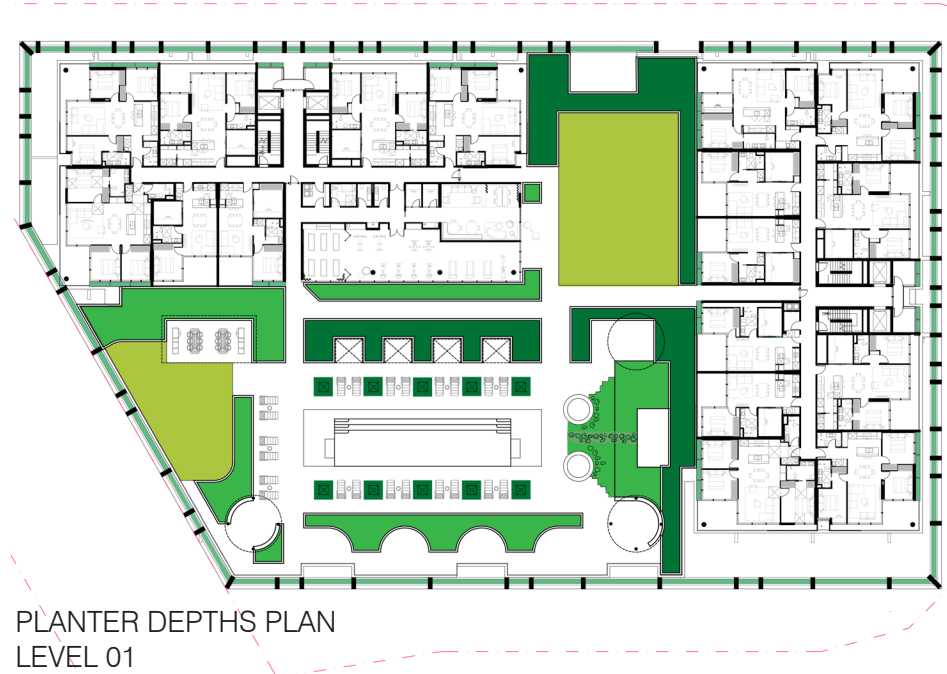
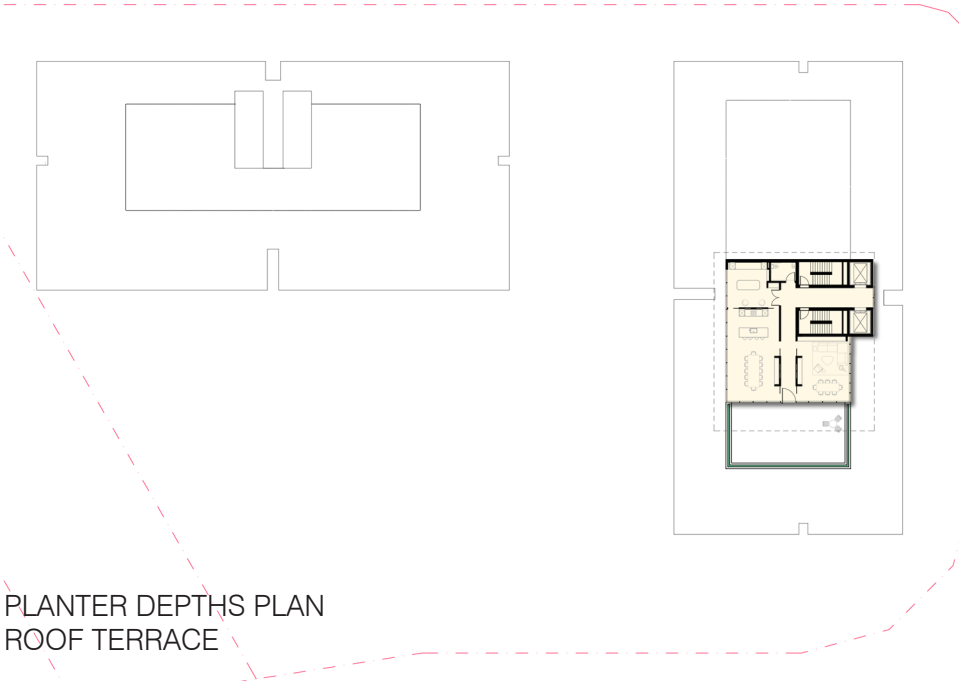
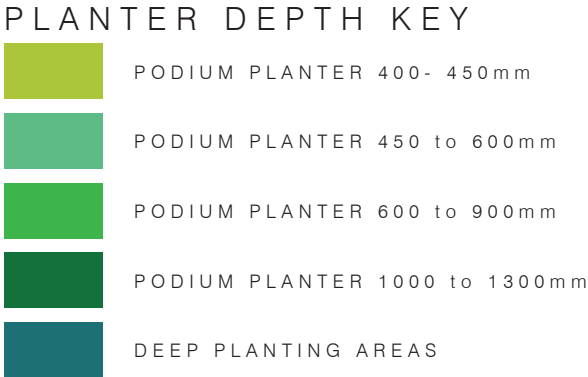
LANDSCAPE SECTIONS

SCHEMATIC DESIGN | LOT 18A HAMILTON



PLANS AND DOCUMENTS
referred to in the PDA
DEVELOPMENT APPROVAL

Approval no: DEV2024/1581/3
Date: 14/08/2025



PLANTER MAINTENANCE

- On Grade planter access + maintenance
- Balcony planter accessed via adjacent balcony "On Grade"
- Access planter at level with horizontal cable/harness safety system

ACCESS NOTES :

- All garden beds noted as 'ON GRADE ACCESS' to be maintained from adjacent 'on grade' pathways, terraces and garden beds within safely reached areas.
- All garden beds maintained 'off grade' will be maintained from appropriate anchor connections, safely accessed from on grade areas or abseil system.
- All balcony plants in units will be maintained by Body Corporate with access through private units.

MAINTENANCE NOTES :

- Maintenance to all planters shown on plans are to be managed through Body Corporate controls.
- Garden maintenance schedule is to be arranged between Body Corporate and the Garden Maintenance Team to ensure gardens are kept to required standards.
- Maintenance schedule may include these tasks:
 - Debris and litter control
 - Weeding
 - Plant pruning
 - Plant replacement
 - Vine leader training and trellis inspection
 - Pest and disease inspection
 - Fertilising
 - Mulch inspection and topping up
 - Soil level control
 - Soil testing
 - Irrigation inspection and testing

IRRIGATION DESIGN

Approximate location of Irrigation Tanks [Located in void area under L1]
Tank to be minimum 90kL storage

IRRIGATION NOTES :

- GENERAL: Design, supply and install a fully automatic irrigation system to all podium planters. The expected operable life of the system and it's fittings is a minimum of 10 years.
- APPROVALS: All necessary plumbing approvals shall be achieved prior to commencement of Irrigation works.
- RPZ: Assembly is to be provided at designated location and contractor shall be responsible for seeking all necessary local authority approvals.
- VALVES + VALVE BOXES: All solenoid and isolating valves are to be housed in trafficable valve boxes. If valve boxes are located in pavement, infill lids shall be supplied and installed with pavement to match adjacent. Valve boxes located in planting areas shall have a minimum of 200mm deep compacted clean/washed gravel at base. Valve boxes located in pavement shall have a flush finish, trip hazards are unacceptable.
- SOURCE: Source shall be harvested rainwater stored in nominated rainwater tank suitable to store up to four weeks of irrigation at a minimum.

IRRIGATION CALCULATIONS :

LANDSCAPE podium AREA TOTAL: 2038m2
(GROUND LEVEL: 64m2 + LEVEL 01: [810 planting + 360 turf] =1170m2 +
LEVEL 02-08 : 721m2 + LEVEL 09-11 : 78m2 + ROOFTOP: 5m2)

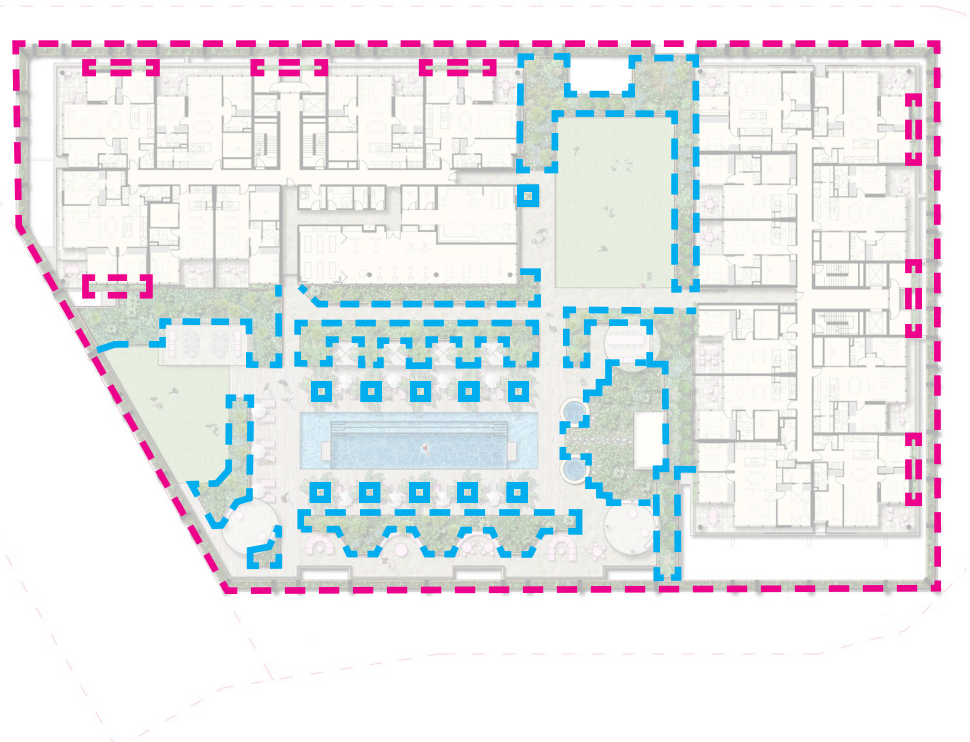
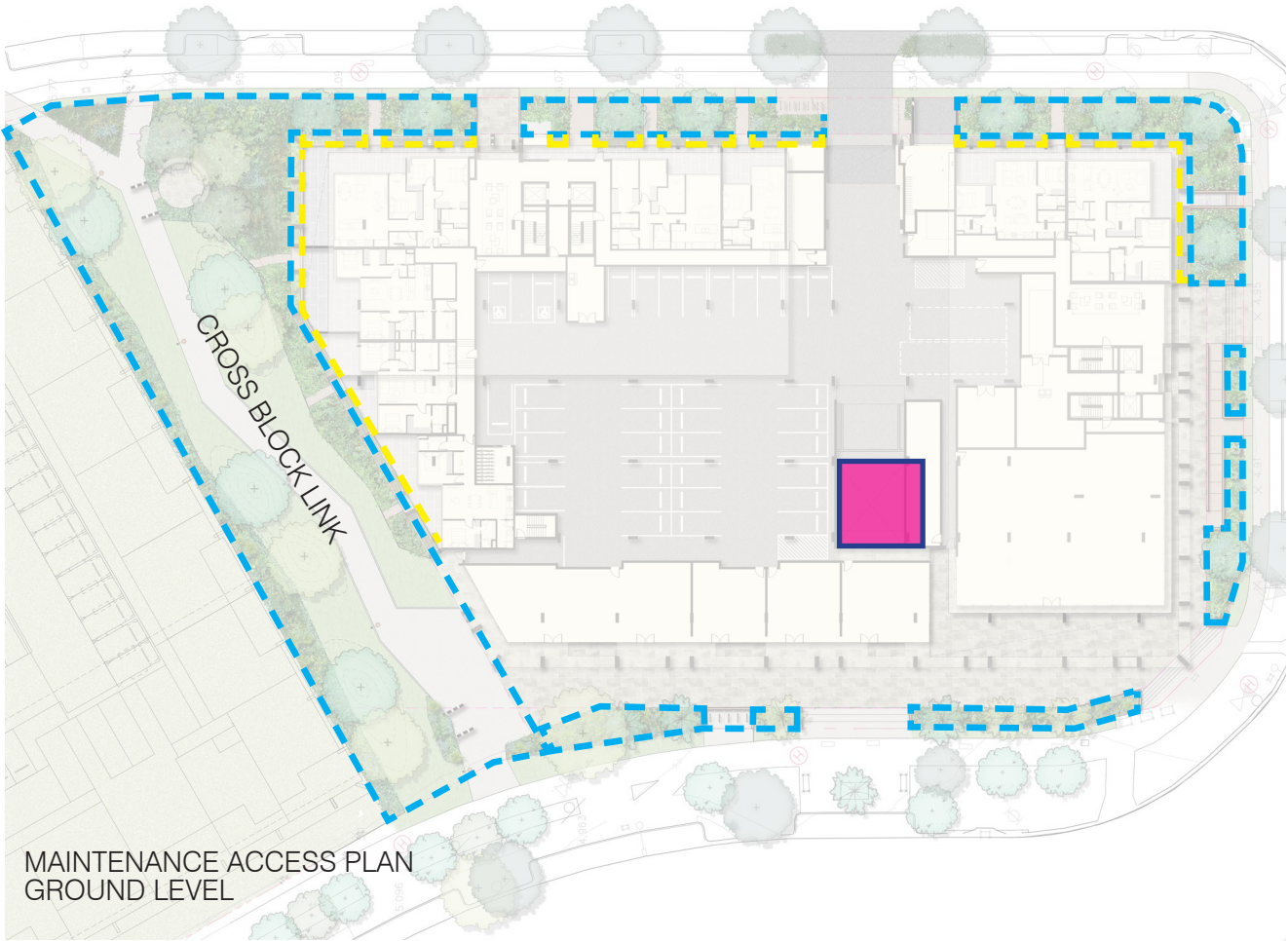
2038 x 0.75 = 1529
1529 x 0.025 = 38.2kL
38.2 x 2 weeks = 77kL TANK

EASEMENT LANDSCAPE AREA 415m2 (turf area not included [596m2])

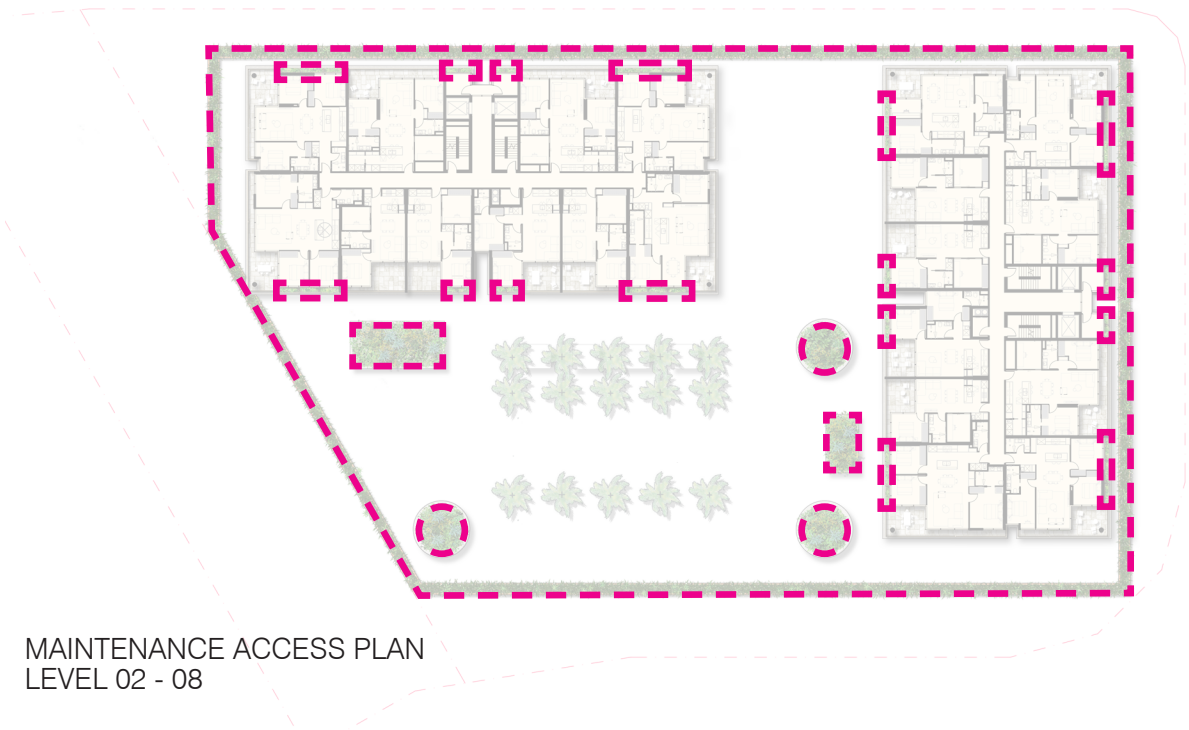
415 x 0.75 = 312
312 x 0.025 = 7.8kL
7.8 x 2 weeks = 16kL TANK

PLANS AND DOCUMENTS
referred to in the PDA
DEVELOPMENT APPROVAL

Approval no: DEV2024/1581/3
Date: 14/08/2025



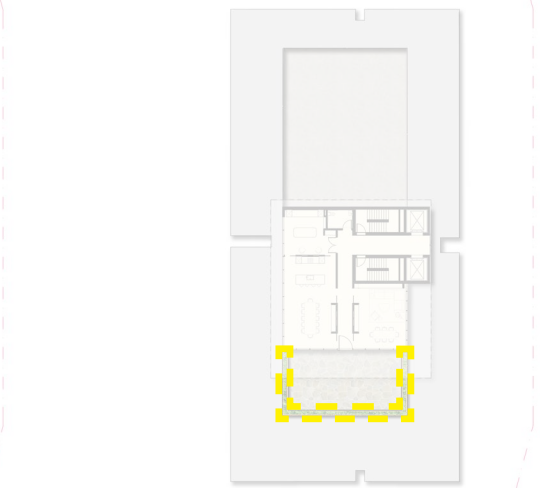
MAINTENANCE ACCESS PLAN
LEVEL 01



MAINTENANCE ACCESS PLAN
LEVEL 02 - 08

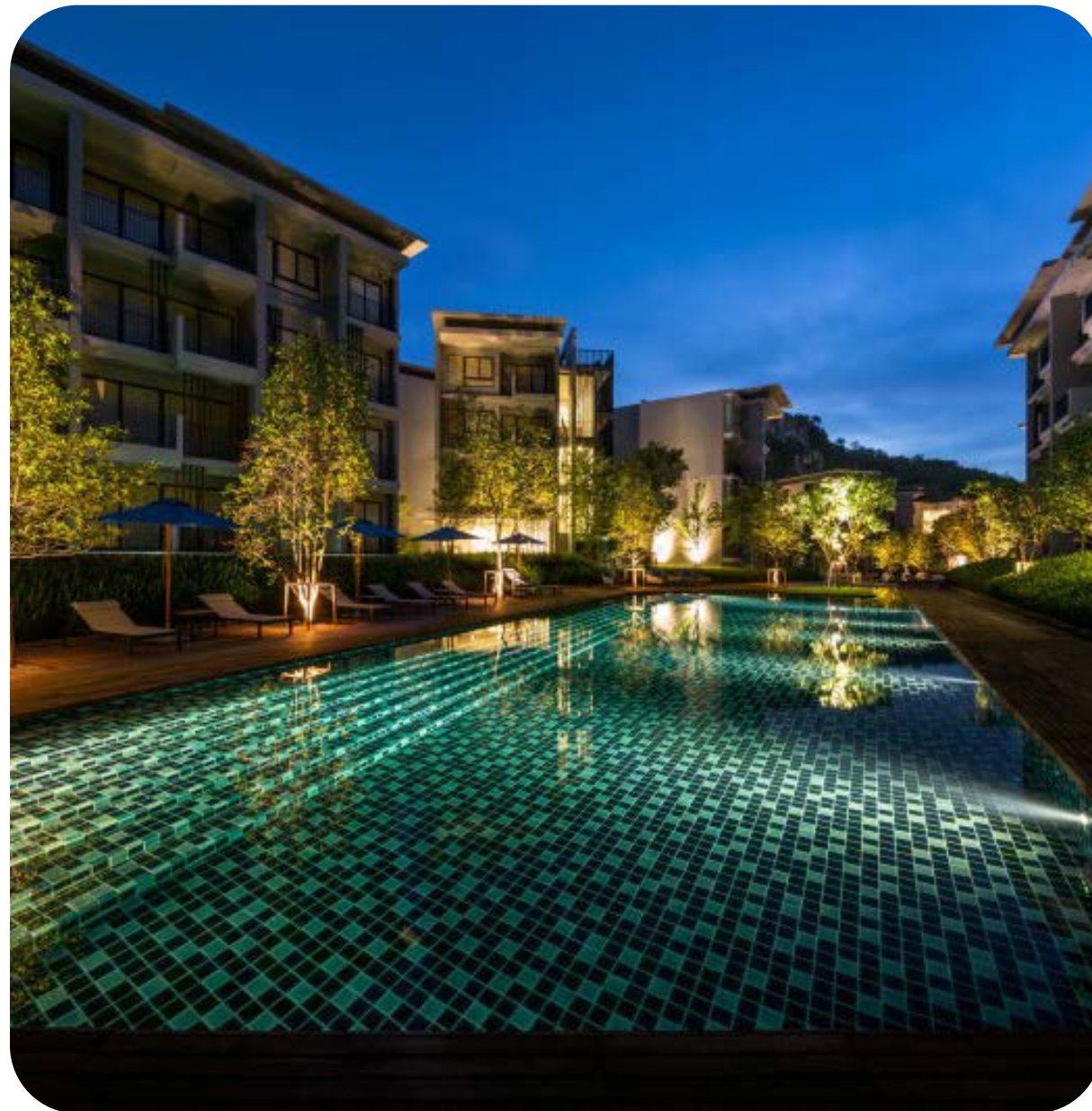


MAINTENANCE ACCESS PLAN
LEVELS 09 - 11



MAINTENANCE ACCESS PLAN
ROOF TERRACE





INDICATIVE LANDSCAPE CHARACTER

SCHEMATIC DESIGN | LOT 18A HAMILTON

PLANS AND DOCUMENTS
referred to in the PDA
DEVELOPMENT APPROVAL

Approval no: DEV2024/1581/3

Date: 14/08/2025



DUNN MORAN
LANDSCAPE ARCHITECTS

2404600 SD-016
2025-07-18 ISSUE C
Copyright by Dunn + Moran Landscape Architects Pty Ltd. This drawing or parts thereof may not be reproduced for any purpose without the consent of Dunn + Moran Landscape Architects.

Roof Terrace, Colour Palette



Timber roof & batten panelling



Natural look stone wall



Overhead planters



Lighting



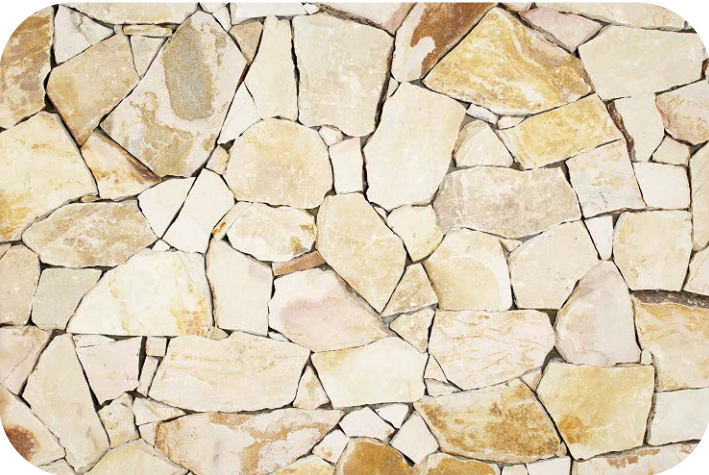
Travertine floor tile



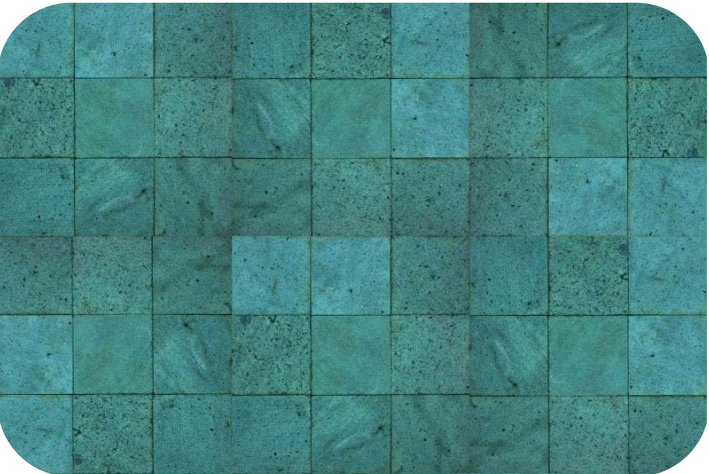
Sandstone sitting elements [Cross Block Link]



Travertine floor tile



Freeform stone floor tile



Pool tile



Pool tile



Pool coping tile



Walling

INDICATIVE MATERIALS PALETTE
SCHEMATIC DESIGN | LOT 18A HAMILTON

PLANS AND DOCUMENTS
referred to in the PDA
DEVELOPMENT APPROVAL

Approval no: DEV2024/1581/3

Date: 14/08/2025



2404600 SD-017
2025-07-18 ISSUE C
Copyright by Dunn + Moran Landscape Architects Pty Ltd. This drawing or parts thereof may not be reproduced for any purpose without the consent of Dunn + Moran Landscape Architects.



ACMENA hemilampra



ATRACTOCARPUS fitzalanii



LIVISTONA australis



ELAEOCARPUS eumundii



CRASSULA ovata

INTERNAL SITE PLANTING

TREES

| SPECIES | COMMON NAME |
|--------------------------|-----------------|
| ATRACTOCARPUS fitzalanii | Native Gardenia |
| ELAEOCARPUS eumundii | Smooth Quandong |
| LIVISTONA australis | Cabbage Palm |

SHRUBS

| SPECIES | COMMON NAME |
|-----------------------------------|------------------|
| CASUARINA glauca 'Greenwave' | Green Wave |
| CRASSULA ovata | Jade plant |
| KALANCHOE 'Silver Spoons' | Silver Spoons |
| RHIPSALIS teres f. heteroclada | Mistletoe Cactus |
| WESTRINGIA fruticosa 'Jervis Gem' | Jervis Gem |

GROUNDCOVERS

| SPECIES | COMMON NAME |
|------------------------------|---------------------|
| APTENIA cordifolia | Heartleaf Ice Plant |
| AUSTROMYRTUS dulcis | Midgen Berry |
| CARPOBROTUS 'Aussie Rambler' | Pig Face |
| DICHONDRA 'Emerald Falls' | Emerald Falls |
| GOODENIA ovata | Hop Goodenia |
| JUNCUS usitatus | Common Rush |
| MYOPORUM parvifolium | Creeping Boobialla |
| VIOLA hederacea | Native Violet |



WESTRINGIA Jervis Gem



AUSTROMYRTUS dulcis



GOODENIA ovata



MYOPORUM parvifolium



VIOLA hederacea

PLANS AND DOCUMENTS referred to in the PDA DEVELOPMENT APPROVAL

Approval no: DEV2024/1581/3
Date: 14/08/2025



CALATHEA zebrina



DIANELLA brevipedunculata



LIRIOPE Evergreen Giant



TRACHELOSPERMUM jasminoides



CRINUM pedunculatum

EASEMENT PLANTING

| SPECIES | COMMON NAME |
|-----------------------|-------------------|
| FICUS coronata | Sandpaper Fig |
| ELAEOCARPUS grandis | Blue Quandong |
| FLINDERSIA schottiana | Cudgeri |
| CRINUM pedunculatum | Swamp Lily |
| MYOPORUM ellipticum | Coastal Boobialla |