

South Maclean Early Learning Centre

Lot 553 on SP341905, South Maclean Landscape Concepts - Development Approval

Daleford Property Pty Ltd

PLANS AND DOCUMENTS referred to in the PDA DEVELOPMENT APPROVAL

Approval no: DEV2025/1592
Date: 6 August 2025



RPD Lot 553 on SP341905, South Maclean
Client Daleford Property Pty Ltd
Architect elevation architecture
Landscape Architect SLR Consulting Australia

DRAWING REGISTER

620.V13637.00001-001	Coversheet and Locality Plan
620.V13637.00001-002	Landscape Concept Plan - Ground Floor and Planting
620.V13637.00001-003	Landscape Concept Plan - Indicative Fencing Plan and Character Images
620.V13637.00001-004	Landscape Concept Plan - Plant Species Schedule and Images 1 of 2
620.V13637.00001-004	Landscape Concept Plan - Plant Species Schedule and Images 2 of 2

REVISION HISTORY

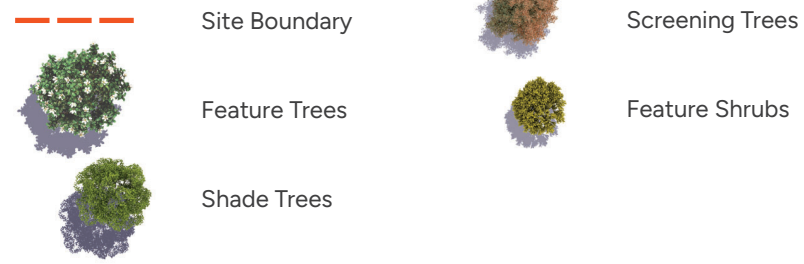
Draft	26 November 2024	Draft For Discussion	Chloe Wegener
A	29 November 2024	Issue for Approval	Chloe Wegener
B	20 January 2025	Issue for Approval	Chloe Wegener
C	16 May 2025	Revised Issue for Approval	Chloe Wegener
D	03 June 2025	Revised Issue for Approval	Chloe Wegener



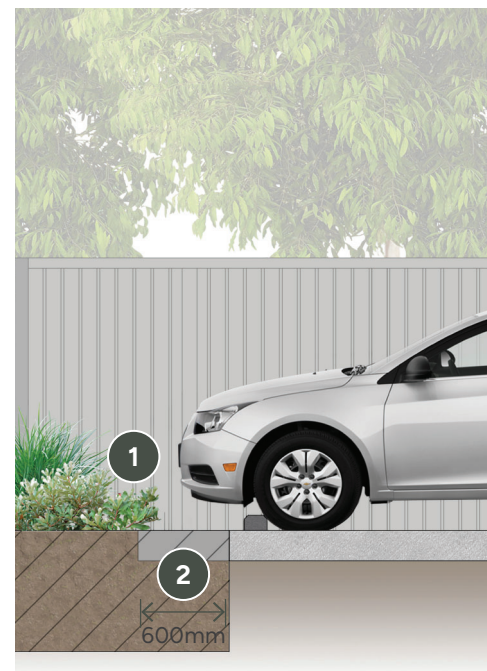
 LOCALITY PLAN
1:2500 @ A3



LEGEND



- | | |
|--|---|
| 1. Existing Flourish streetscape to be retained | 13. Low feature groundcover planting area |
| 2. Driveway entry | 14. Outdoor play space to be designed in future project detailed design phase |
| 3. Driveway exit | 15. Fence alignment, refer to indicative fencing plan |
| 4. Feature shade tree | 16. Egress access gate |
| 5. Pedestrian site entry | 17. Pathway (to Architects Detail) |
| 6. Opticomm unit | 18. Garden bed to perimeter of play space. Providing buffet to road, to be planted with layer landscape including shade trees, screening shrubs, groundcovers and sensory species |
| 7. Secure building entry point | 19. Feature planting area to streetscape frontage, planted with a mix of feature trees, shade trees screening shrubs and groundcovers |
| 8. Feature screen planting area, with groundcovers | 20. Garden beds installed adjoining buildings to include a 300mm wide minimum edged gravel strip with geofabric wrapped drainage, connect to stormwater network |
| 9. Carpark (to Civil Engineers Detail) | 21. Shrub and Groundcover planting area only |
| 10. 600mm wide permeable open graded asphalt | |
| 11. PMT site | |
| 12. 1m wide Feature screen planting area, with groundcovers to property boundary. Refer to Typical Carpark Landscape Interface Detail. | |



TYPICAL CARPARK SECTION
1:50 @ A3



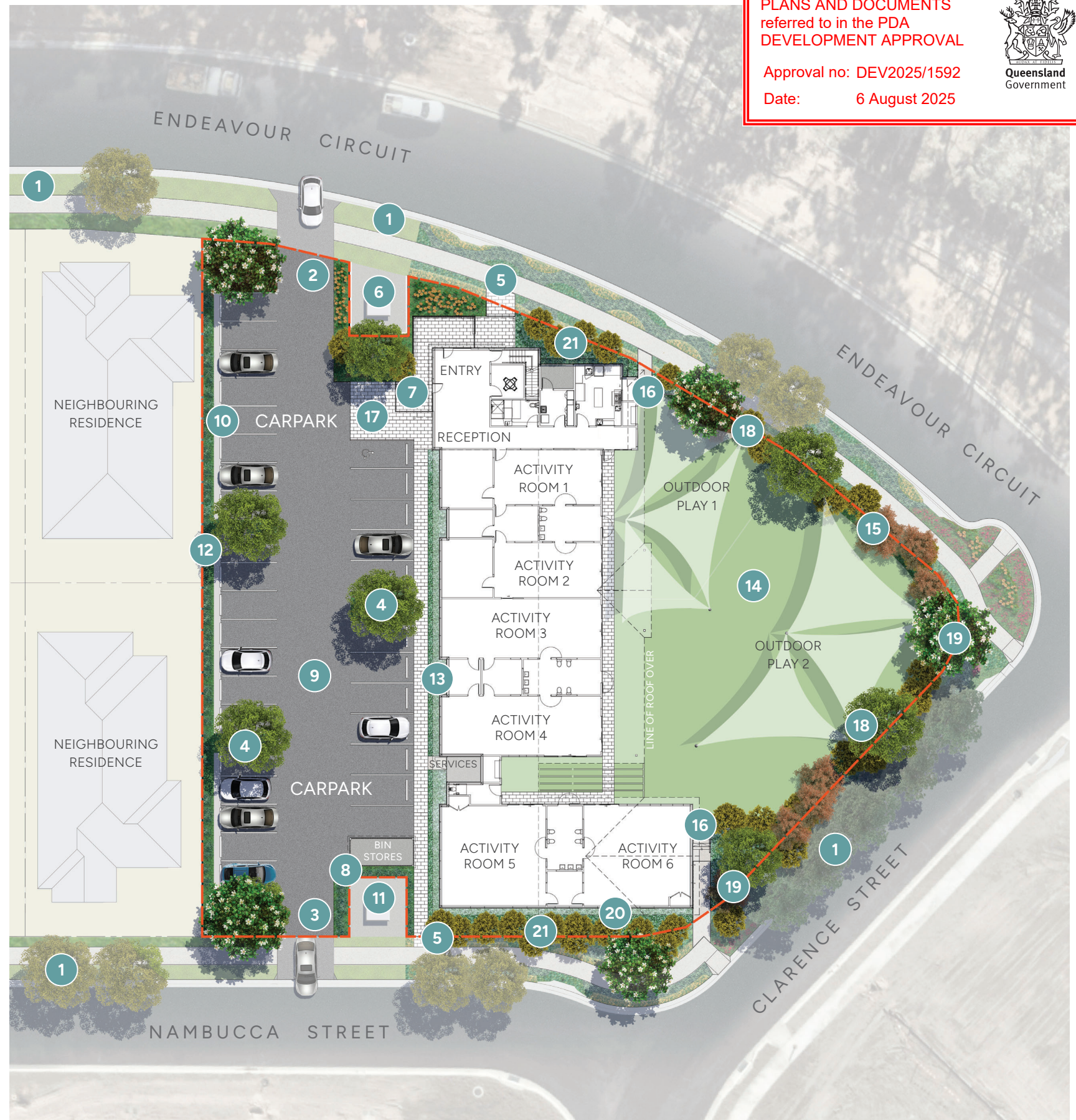
TYPICAL CARPARK LANDSCAPE INTERFACE
1:100 @ A3



1. 1m wide feature screen planting to property boundary
2. Permeable open graded asphalt
3. Wheel stops installed at the closed end of the parking space - Refer to Civil Engineers' Drawings for construction details and set out.

PLANS AND DOCUMENTS referred to in the PDA DEVELOPMENT APPROVAL






Approval no: DEV2025/1592
Date: 6 August 2025



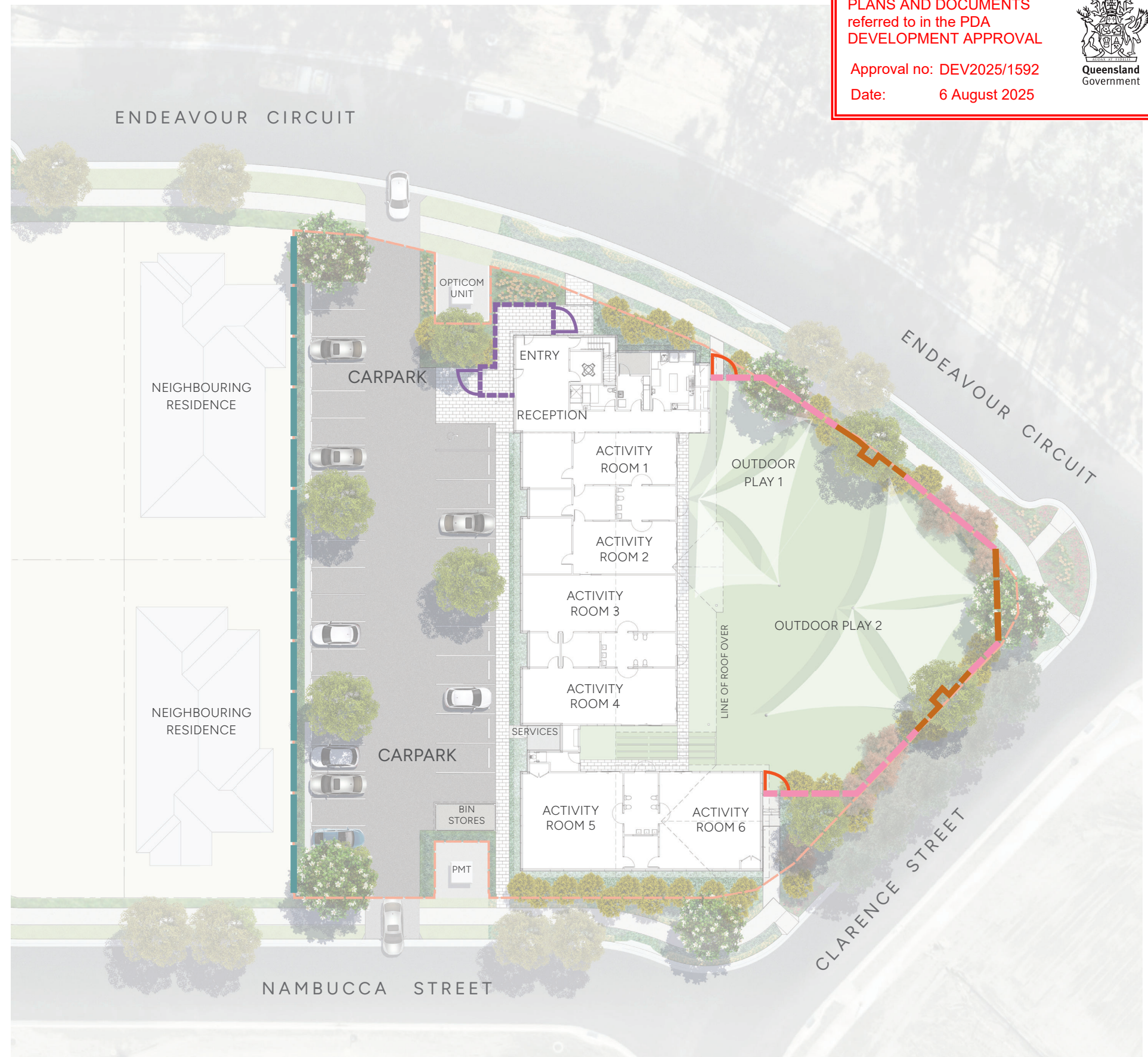
LANDSCAPE CONCEPT PLAN
1:400 @ A3



LEGEND

-  **Fence Type 1**
Acoustic fence (refer to acoustic report)
-  **Fence Type 2**
1.5m high feature semi-transparent entry fence
-  **Fence Type 4**
2.0m high semi-transparent fence
-  **Fence Type 5**
2m high light weight solid fence
-  Egress gate

CHARACTER IMAGES



INDICATIVE FENCING PLAN
1:400 @ A3

0 2 4 6 10 20m
SCALE 1:400 @ A3

FEATURE TREES



Elaeocarpus reticulatus



Lagerstroemia indica



Magnolia grandifolia
'Little Gem'



Magnolia grandiflora
'Teddy Bear'



Waterhousea floribunda

SHADE TREES



Acmena hemilepra



Cupaniopsis anacardioides



Tristaniopsis laurina



Xanthostemon chrysanthus

SCREENING TREES



Backhousia citriodora



Elaeocarpus Eumundi



Lophostemon confertus

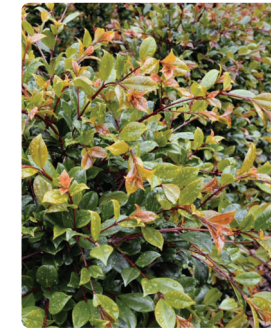
SCREENING SHRUBS



Acmena smithii minor



Grevillea 'Superb'



Syzygium australe
'Resilience'

FEATURE SHRUBS



Banksia spinulosa
var. *collina*



Ficus microcarpa



Grevillea banksii
x *pteridifolia*



Grevillea banksii

PLANT SCHEDULE

SPECIES	COMMON NAME	SIZE AT MATURITY	MINIMUM POT SUPPLY SIZE
FEATURE TREES			
<i>Elaeocarpus reticulatus</i>	Prima Donna' Blueberry Ash	4-7m high x 3m wide	45L
<i>Lagerstroemia indica</i>	Crepe Myrtle	2-3m high x 2-3m wide	45L
<i>Magnolia grandifolia</i> 'Little Gem'	Little Gem	4-5m high x 2-3m wide	100L
<i>Magnolia grandiflora</i> 'Teddy Bear'	Teddy Bear	4m high x 3m wide	100L
<i>Waterhousea floribunda</i>	Weeping Lilly Pilly	15-20m high x 5-10m wide	45L
SHADE TREES			
<i>Acmena hemilampra</i>	Broad-Leaved Lilly Pilly	5-8m high x 2-5m wide	45L
<i>Cupaniopsis anacardioides</i>	Tuckeroo	5-8m high x 5-7m wide	45L
<i>Tristaniopsis laurina</i>	Water Gum	10-15m high x 5-10m wide	45L
<i>Xanthostemon chrysanthus</i>	Golden Penda	10-15m high x 5-12m wide	45L
SCREENING TREES			
<i>Backhousia citriodora</i>	Lemon Scented Myrtle	2-8m high x 4-6m wide	25L
<i>Elaeocarpus Eumundi</i>	Quandong	7m high x 2m wide	25L
<i>Lophostemon confertus</i>	Brush Box	10-15m high x 5-10m wide	25L
SCREENING SHRUBS			
<i>Acmena smithii minor</i>	Lilly Pilly	2-3m high x 1-2m wide	25L
<i>Grevillea 'Superb'</i>	Grevillea	2m high x 2m wide	25L
<i>Syzygium australe 'Resilience'</i>	Lilly Pilly	5m high x 2m wide	25L
FEATURE SHRUBS			
<i>Banksia spinulosa</i> var. <i>collina</i>	Hairpin Banksia	3m high x 1.5-2m wide	140mm
<i>Ficus microcarpa</i>	Green Island'	1m high x 1m wide	140mm
<i>Grevillea banksii</i> x <i>pteridifolia</i>	Honey Gem	4m high x 3m wide	140mm
<i>Grevillea banksii</i>	Red Flowered Silky Oak	3m high x 1.5-2m wide	140mm

PLANS AND DOCUMENTS
referred to in the PDA
DEVELOPMENT APPROVAL

Approval no: DEV2025/1592

Date: 6 August 2025



GROUNDCOVERS



Austromyrtus dulcis



Banksia spinulosa
'Birthday Candles'



Banksia spinulosa
'Coastal Cushion'



Casurina glauca 'Cousin It'



Dianella caerulea



Diets bicolor



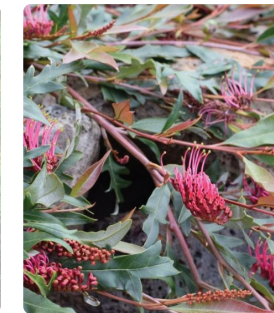
Goodenia ovata 'Prostrate'



Grevillea 'Bronze Rambler'



Grevillea 'Gin Gin Gem'



Grevillea 'Royal Mantle'



Liriope muscari



Lomandra
'Evergreen Baby'



Poa Labillardieri

SENSORY PLANTING



Aloe barbadensis miller



Anethum graveolens



Helichrysum italicum



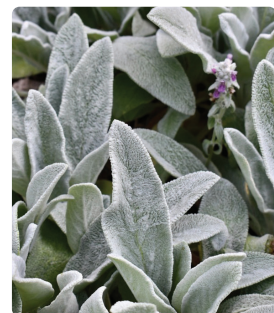
Lavender



Ocimum basilicum



Rosmarinus officinalis
Prostrata



Stachys byzantina



Tagetes patula



Thymus vulgaris

PLANT SCHEDULE

SPECIES	COMMON NAME	SIZE AT MATURITY	MINIMUM POT SUPPLY SIZE
GROUNDCOVERS			
<i>Austromyrtus dulcis</i>	Midgenberry	0.5-1m high x 1m wide	140mm
<i>Banksia spinulosa</i> 'Birthday Candles'	Birthday Candles	0.5m high x 1m wide	140mm
<i>Banksia spinulosa</i> 'Coastal Cushion'	Banksia Coastal Cushion	0.8m high x 1m wide	140mm
<i>Casurina glauca</i> 'Cousin It'	She-oak	0.5m high x 1-1.5m wide	140mm
<i>Dianella caerulea</i>	Blue Flax Lily	0.6-1.5m high x 0.5-1m wide	140mm
<i>Diets bicolor</i>	African iris	1m high x 2m wide	140mm
<i>Goodenia ovata</i> 'Prostrate'	Goodenia	0.3m high x 1m wide	140mm
<i>Grevillea</i> 'Bronze Rambler'	Bronze Rambler	0.5m high x 5m wide	140mm
<i>Grevillea</i> 'Gin Gin Gem'	Gin Gin Gem	0.5m high x 3m wide	140mm
<i>Grevillea</i> 'Royal Mantle'	Royal Mantle	0.5m high x 5m wide	140mm
<i>Liriope muscari</i>	Evergreen Giant	0.5-1m high x 0.5-1m wide	140mm
<i>Lomandra</i> 'Evergreen Baby'	Lomandra	0.5m high x 0.5m wide	140mm
<i>Poa Labillardieri</i>	Tussock Grass	0.5-1m high x 0.5m wide	140mm
SENSORY PLANTING			
<i>Aloe barbadensis miller</i>	Aloe vera	0.2-0.5m high x 0.2-0.5m wide	50mm
<i>Anethum graveolens</i>	Dill	0.5-1m high x 0.1-0.5m wide	50mm
<i>Helichrysum italicum</i>	Curry plant	0.2-0.5m high x 0.5-1m wide	50mm
<i>Lavender</i>	Lavender	0.5-1m high x 0.1-0.5m wide	50mm
<i>Ocimum basilicum</i>	Sweet Basil	0.5m high x 0.2-0.5m wide	50mm
<i>Rosmarinus officinalis Prostrata</i>	Rosemary	0.6m high x 1-2m wide	50mm
<i>Stachys byzantina</i>	Lamb's ears	0.1-0.5m high x 0.5-1m wide	50mm
<i>Tagetes patula</i>	Marigold	0.2-0.5m high x 0.2-0.5m wide	50mm
<i>Thymus vulgaris</i>	Thyme	0.3m high x 0.3m wide	50mm

PLANS AND DOCUMENTS
referred to in the PDA
DEVELOPMENT APPROVAL

Approval no: DEV2025/1592

Date: 6 August 2025

