

BRISBANE CITY COUNCIL

7-15 WREN STREET, BOWEN HILLS 4006

LOT 23 on RP9941 & LOT 24 on SP276528



SITE LOCATION
NTS

DRAWING INDEX		
DRAWING No.	DRAWING TITLE	REVISION
2303-010-SK001	COVER SHEET & DRAWING INDEX	C
2303-010-SK002	LOWER GROUND FLOOR PLANTING PLAN	C
2303-010-SK003	GROUND FLOOR LOBBY PLANTING PLAN	C
2303-010-SK004	LEVEL 5 - PARKING PLANTING PLAN	C
2303-010-SK005	LEVEL 6 TO 7 - PARKING PLANTING PLAN	C
2303-010-SK006	LEVEL 8 TO 9 - UNITS & CARPARKS PLANTING PLAN	C
2303-010-SK007	LEVEL 10 - CARPARKS & STAGE 1 ROOF PLANTING PLAN	C
2303-010-SK008	LEVEL 11 - UNITS & COMMUNAL AREAS PLANTING PLAN	C
2303-010-SK009	LEVEL 12 - UNITS & COMMUNAL AREAS PLANTING PLAN	C
2303-010-SK010	LEVEL 30 - SKY GARDEN PLANTING PLAN	C
2303-010-SK020	PODIUM PLANTER STRUCTURE DIAGRAMS - SHEET 1 OF 2	C
2303-010-SK021	PODIUM PLANTER STRUCTURE DIAGRAMS - SHEET 2 OF 2	C
2303-010-SK022	TYPICAL PODIUM PLANTER DETAILS	C
2303-010-SK030	SECTIONS	C
2303-010-SK040	PLANTING SPECIES SCHEDULES, IMAGES & NOTES	C

PRELIMINARY			
C	REVISED ISSUE	JC	14.11.24
B	REVISED ISSUE	JC	01.09.23
rev	description	drawn	date
WREN STREET HEALTH INVESTMENTS PTY LTD 7-15 WREN STREET, BOWEN HILLS LANDSCAPE CONCEPT PLAN COVER SHEET & DRAWING INDEX			



LAUD ink
landscape architecture and urban design



Office 7, 915 Ann Street, Fortitude Valley, QLD 4006
E: eleas@laudink.com.au / jane@laudink.com.au
W: www.laudink.com.au

ABN 80 169 838 144

Conditions of Use: This document may only be used by LAUD ink's client (and any other person who LAUD ink has agreed can use this document) for the purpose for which it was prepared and must not be used by any other person or for any other purpose.

scale	NTS	for A1	job no.	2303-010
date	NOV 2024		rev no.	C

approved E. NICHOLAOU* SK001

All new planting on the ground level should be limit to 0.5m in mature height to allow for clear view lines along the bikeway to ensure CPTED principles are maintained.

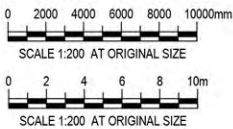
AMENDED IN RED

By: Elrico Koeberg
Date: 20 May 2025



- LEGEND
- EXISTING TREES TO BE RETAINED
 - PROPOSED SHADE TREES
 - PROPOSED SHRUB AND LOW LEVEL PLANTING
 - PROPOSED GROUNDCOVER PLANTING
 - PROPOSED CASCADING PLANTING
 - APPROXIMATE EXTENT OF EXISTING HARDSTAND - REFER TO SITE SURVEY FOR DETAILS
 - APPROXIMATE EXTENT OF EXISTING VEGETATION - REFER TO SITE SURVEY FOR DETAILS
 - HARDSTAND SURFACE FINISH TO PEDESTRIAN PRIORITY PATHWAY
 - CONCRETE AREA - REFER CIVIL ENGINEERS DRGS FOR DETAILS
 - PAVED AREA - REFER ARCHITECTS DRGS FOR DETAILS
 - BUILDING LINE OVER
 - PROPERTY BOUNDARY
 - PROPOSED LEVEL
 - EXISTING SURVEY LEVEL
 - EXISTING BIKE PATH LIGHTPOLES

- NOTES
- REFER TO DRG 2303-010-SK040 FOR PLANT SPECIES SCHEDULE, IMAGES AND GENERAL NOTES
 - REFER ARCHITECTS DRGS FOR ALL FENCE / BALUSTRADE DETAILS
 - REFER TO DRG 2303-010-SK020 -SK22 FOR PODIUM PLANTER DETAILS



PRELIMINARY

C	REVISED ISSUE	JC	14.11.24
B	REVISED ISSUE	JC	01.09.23
rev	description	drawn	date

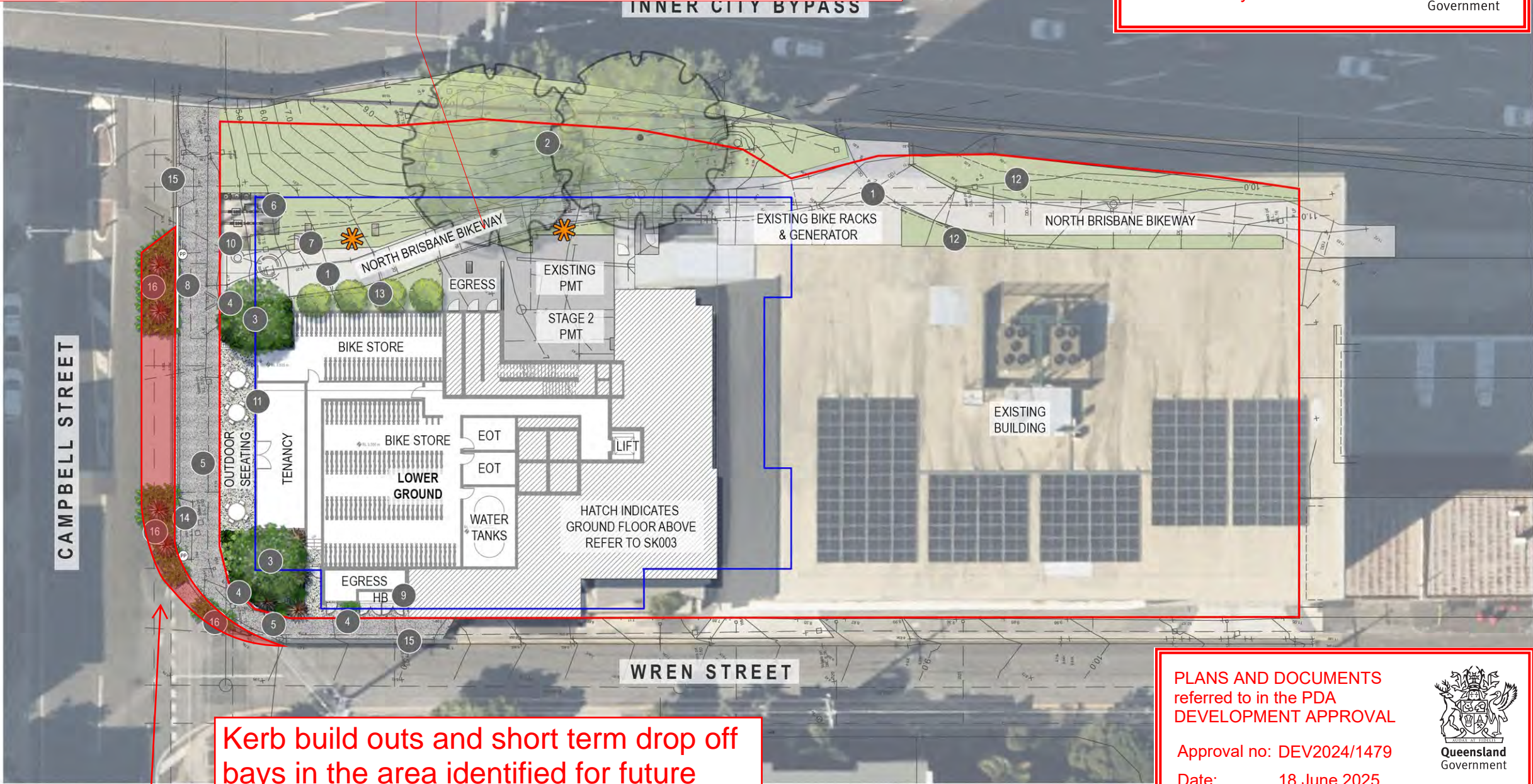
WREN STREET HEALTH INVESTMENTS PTY LTD
7-15 WREN STREET, BOWEN HILLS
LANDSCAPE CONCEPT PLAN
LOWER GROUND FLOOR PLANTING PLAN



Conditions of Use: This document may only be used by LAUD ink's client (and any other person who LAUD ink has agreed can use this document) for the purpose for which it was prepared and must not be used by any other person or for any other purpose.

scale 1:200 for A1 job no. 2303-010
date NOV 2024 rev no. C

approved E. NICHOLAOU* SK002



Kerb build outs and short term drop off bays in the area identified for future road widening is not approved as part of this development.

ANNOTATION NOTES

- EXISTING BIKE PATH TO BE RETAINED. MAKE GOOD IF DAMAGED
- EXISTING MATURE FIG TREES TO BE RETAINED SUBJECT TO ARBORIST REPORT AND ON SITE CONFIRMATION DURING CONSTRUCTION. SUPPLEMENTARY LOW MAINTENANCE SHRUBS AND SPREADING GROUNDCOVERS TO BE INSTALLED TO FULL EXTENT OF GARDEN BEDS IF REQUIRED (SUBJECT TO EXTENT OF WORKS)
- LARGE SUB TROPICAL SHADE TREES WAT flo TO BUFFER EXISTING BIKE PATH AND SOFTEN CAMPBELL STREET FRONTAGE. TREE TO BE UNDERPLANTED WITH SHRUBS ALO cal, ALP mut, CAR mac, COR rub AND GROUNDCOVERS CAR gla, DIE gra, SEN man AND ZOY ten
- CASCADING GROUNDCOVERS CAS CI AND DIC SF TO BE POSITIONED AT EDGE OF PLANTER TO CASCADE OVER SOFTENING STREETSCAPE INTERFACE
- PROPOSED FULL WIDTH PAVEMENT VICTORIA FALLS EXPOSED AGGREGATE (HANSON, BORAL OR APPROVED EQUIVALENT) AS PER BCC STREETSCAPE HIERARCHY REQUIREMENTS - CENTRE STREET MINOR
- EXISTING WATER MAINS AND METERS
- EXISTING STORMWATER PIT
- EXISTING FENCE
- PROPOSED HYDRANT BOOSTER
- EXISTING SEWER MANHOLE
- INDICATIVE OUTDOOR SEATING TO LOWER GROUND TENANCY AT STREET LEVEL TO ACTIVATE CAMPBELL STREET FRONTAGE AND PROVIDE AMENITY TO STREETSCAPE CHARACTER
- EXISTING BUFFER VEGETATION INSTALLED AS PART OF STAGE 1 WORKS TO NORTH BRISBANE BIKEWAY TO BE RETAINED
- PROPOSED COLUMNAR SCREENING TREES ELA eum TO BUFFER DEVELOPMENT AND NORTH BRISBANE BIKEWAY INTERFACE. SUPPLEMENTARY LOW MAINTENANCE SHRUBS AND SPREADING GROUNDCOVERS TO BE INSTALLED TO FULL EXTENT OF GARDEN BEDS
- EXISTING STORMWATER GULLY PIT TO BE REPLACED AND RELOCATED - REFER TO CIVIL ENGINEERS DRGS FOR DETAILS
- EXISTING KERB AND CHANNEL - REFER TO CIVIL ENGINEERS DRGS FOR DETAILS
- LOW SHRUBS / GROUNDCOVERS PHI XAN

CHARACTER REFERENCE IMAGES



1. EXISTING BIKE PATH VIEWED FROM CAMPBELL STREET FRONTAGE

Mature Fig Trees to be retained

All new planting on the ground level should be limit to 0.5m in mature height to allow for clear view lines along the bikeway to ensure CPTED principles are maintained.

Kerb build outs and short term drop off bays in the area identified for future road widening is not approved as part of this development.

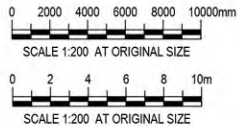
- LEGEND
- PROPOSED FEATURE TREES
- PROPOSED SHRUB AND LOW LEVEL PLANTING
- PROPOSED GROUNDCOVER PLANTING
- PROPOSED CASCADING PLANTING
- HARDSTAND SURFACE FINISH TO PEDESTRIAN PRIORITY PATHWAY
- CONCRETE AREA - REFER CIVIL ENGINEERS DRGS FOR DETAILS
- PAVED AREA - REFER ARCHITECTS DRGS FOR DETAILS
- BUILDING LINE OVER
- PROPERTY BOUNDARY

AMENDED IN RED

By: Elrico Koeberg
Date: 20 May 2025



- NOTES
1. REFER TO DRG 2303-010-SK040 FOR PLANT SPECIES SCHEDULE, IMAGES AND GENERAL NOTES
2. REFER ARCHITECTS DRGS FOR ALL FENCE / BALUSTRADE DETAILS
3. REFER TO DRG 2303-010-SK020 -SK22 FOR PODIUM PLANTER DETAILS



PRELIMINARY

C	REVISED ISSUE	JC	14.11.24
B	REVISED ISSUE	JC	01.09.23
rev	description	drawn	date

WREN STREET HEALTH INVESTMENTS PTY LTD
7-15 WREN STREET, BOWEN HILLS
LANDSCAPE CONCEPT PLAN
GROUND FLOOR LOBBY PLANTING PLAN

LAUDink

landscape architecture and urban design

Office 7, 915 Ann Street, Fortitude Valley, QLD 4006
E: elias@laudink.com.au / jane@laudink.com.au
W: www.laudink.com.au
ABN 80 169 838 144

Conditions of Use: This document may only be used by LAUD ink's client (and any other person who LAUD ink has agreed can use this document) for the purpose for which it was prepared and must not be used by any other person or for any other purpose.

scale | 1:200 | for A1 | job no. | 2303-010
date | NOV 2024 | rev no. | C

approved | E. NICHOLAOU* | SK003

ANNOTATION NOTES

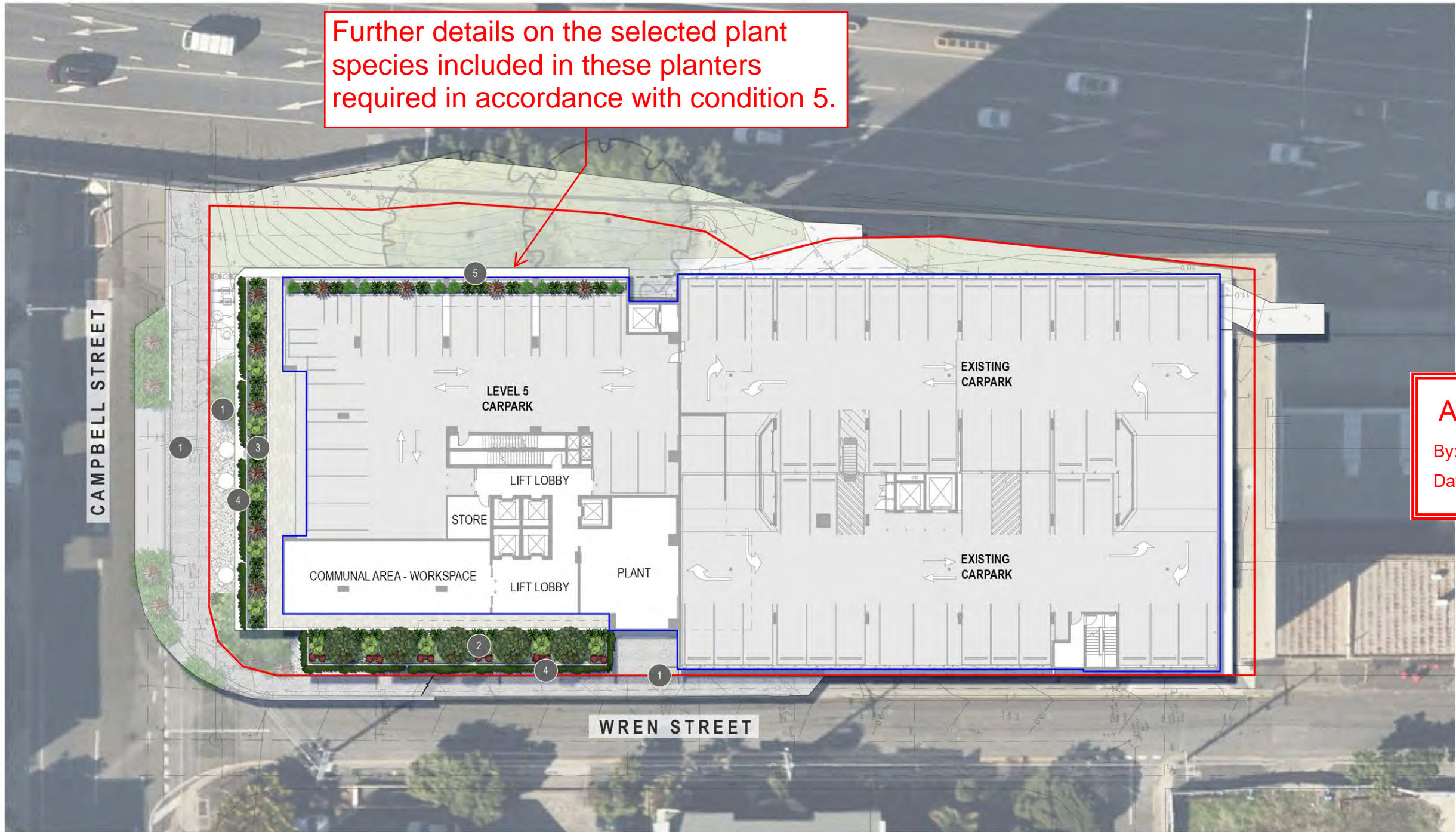
- 1 REFER TO DRAWING 2303-010-SK002 FOR LOWER GROUND FLOOR PLANTING PLAN DETAILS
- 2 MAIN PEDESTRIAN ENTRY / EXIT
- 3 PROPOSED FULL WIDTH PAVEMENT VICTORIA FALLS EXPOSED AGGREGATE (HANSON, BORAL OR APPROVED EQUIVALENT) AS PER BCC STREETScape HIERARCHY REQUIREMENTS - CENTRE STREET MINOR. CROSSOVER FINISHES TO MATCH
- 4 REFER TO CIVIL ENGINEERS DRGS FOR CROSSOVER DETAILS
- 5 BALCONY PODIUM PLANTER TO INCLUDE SHRUBS PHI XAN AND ZAM fur WITH GROUNDCOVERS LIR JR AND SEN man
- 6 CASCADING SPECIES APT cor AND CAS CI TO BE POSITIONED AT EDGE OF BALCONY PLANTERS TO SOFTEN STREETScape INTERFACE AND BUILT FORM
- 7 FEATURE PALMS LIC gra TO DEFINE MAIN ENTRANCE AND SOFTEN HARDSTAND. PALMS TO BE UNDERPLANTED WITH SHRUBS ALO cal, ASP ela, PHI XAN, PIT MM AND ZAM fur, AND GROUNDCOVERS APT cor, CAR gla, CRA und, LIR JR AND OPH NAN
- 8 SMALL SHADE TREES RAN fit TO BUFFER WREN STREET FRONTAGE AND SOFTEN BUILT FORM. TREES TO BE UNDERPLANTED WITH SHRUBS ALO cal, ASP ela, PHI XAN, PIT MM AND ZAM fur, AND GROUNDCOVERS APT cor, CAR gla, CRA und, LIR JR AND OPH NAN

PLAN
SCALE 1:200

CHRACTER REFERENCE IMAGES



1. FEATURE PALMS LIC gra WITH LUSH TROPICAL UNDERPLANTING TO BE PLANTED IN RAISED PLANTER WITH CASCADING PLANTS TO SOFTEN WALLS AND DEFINING MAIN PEDESTRIAN ENTRANCE
2. BALCONY PLANTERS TO FEATURE CASCADING SPECEIS POSITIONED AT EDGE OF PLANTER TO SOFTEN TENANCY BELOW AND STREETScape INTERFACE



- LEGEND
- PROPOSED FEATURE TREES
 - PROPOSED SHRUB AND LOW LEVEL PLANTING
 - PROPOSED GROUNDCOVER PLANTING
 - PROPOSED CASCADING PLANTING
 - CONCRETE AREA - REFER CIVIL ENGINEERS DRGS FOR DETAILS
 - PAVED AREA - REFER ARCHITECTS DRGS FOR DETAILS
 - BUILDING LINE OVER
 - PROPERTY BOUNDARY

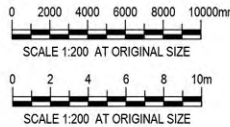
AMENDED IN RED

By: Elrico Koeberg

Date: 20 May 2025



- NOTES
- REFER TO DRG 2303-010-SK040 FOR PLANT SPECIES SCHEDULE, IMAGES AND GENERAL NOTES
 - REFER ARCHITECTS DRGS FOR ALL FENCE / BALUSTRADE DETAILS
 - REFER TO DRG 2303-010-SK020 -SK22 FOR PODIUM PLANTER DETAILS



PRELIMINARY

C	REVISED ISSUE	JC	14.11.24
B	REVISED ISSUE	JC	01.09.23
rev	description	drawn	date

WREN STREET HEALTH INVESTMENTS PTY LTD
7-15 WREN STREET, BOWEN HILLS
LANDSCAPE CONCEPT PLAN
LEVEL 5 - PARKING PLANTING PLAN

LAUD ink
landscape architecture and urban design

Office 7, 915 Ann Street, Fortitude Valley, QLD 4006
E: elaas@laudink.com.au / jane@laudink.com.au
W: www.laudink.com.au

ABN 80 169 838 144

Conditions of Use: This document may only be used by LAUD ink's client (and any other person who LAUD ink has agreed can use this document) for the purpose for which it was prepared and must not be used by any other person or for any other purpose.

scale | 1:200 for A1 job no. | 2303-010
date | NOV 2024 rev no. | C

approved | E. NICHOLAOU* SK004

ANNOTATION NOTES

- REFER TO DRAWING 2303-010-SK002 - SK003 FOR LEVELS BELOW DETAILS
- PODIUM PLANTER TO BE PLANTED WITH COLMUNAR TREES ELA eum TO SOFTEN BUILT FORM AND PROVIDE AMENITY TO COMMUNAL AREA WORKSPACE. TREES TO BE UNDERPLANTED WITH LOW MAINTENANCE AND HARDY SHRUBS AND GROUNDCOVERS AS PER DRG 2303-010-SK040
- PODIUM PLANTER TO INCLUDE A COMBINATION OF LOW MAINTENANCE AND HARDY SHRUBS ALO MG, CAR mac, CRA ova, PHI XAN AND PIT MM WITH GROUNDCOVERS CRA und, LIR JR, SAN tri AND SEN man
- CASCADING / SPREADING GROUNDCOVERS CAR gla, CAS Cl, CIS ant AND DIC SF TO BE POSITIONED AT EDGE OF PODIUM PLANTER TO CASCADE OVER SOFTENING BUILDING FACADE
- HARDY LOW MAINTENANCE SHADE TOLERANT SHRUBS ALC RUB, COR rub, MON del, PHI XAN AND PEP obt TO BE PLANTED TO INTERNAL CARPARK PODIUM PLANTER

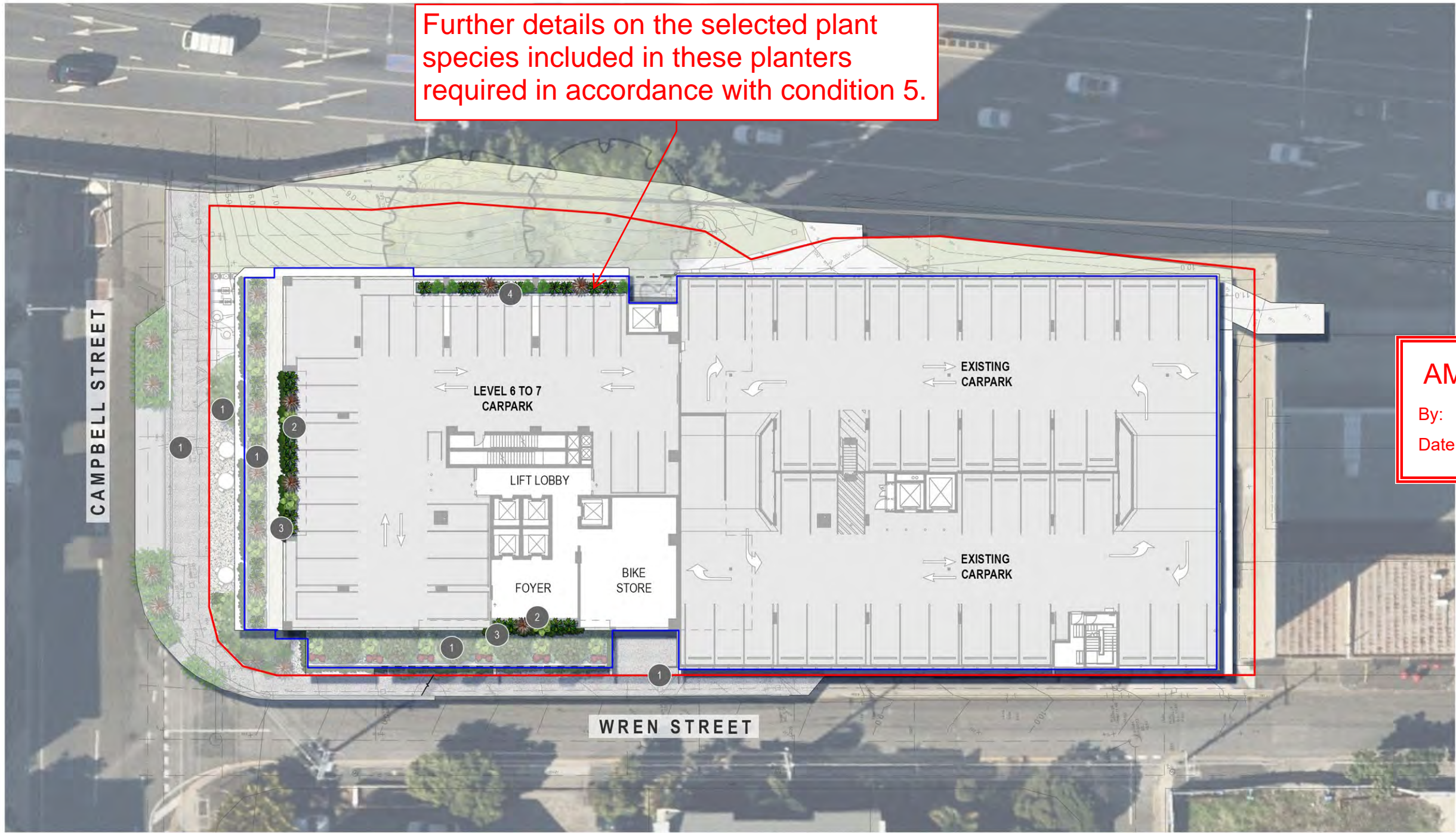
PLAN
SCALE 1:200

PLANS AND DOCUMENTS
referred to in the PDA
DEVELOPMENT APPROVAL

Approval no: DEV2024/1479

Date: 18 June 2025





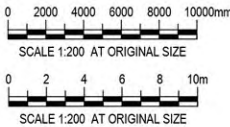
- LEGEND
- PROPOSED SHRUB AND LOW LEVEL PLANTING
 - PROPOSED GROUNDCOVER PLANTING
 - PROPOSED CASCADING PLANTING
 - CONCRETE AREA - REFER CIVIL ENGINEERS DRGS FOR DETAILS
 - PAVED AREA - REFER ARCHITECTS DRGS FOR DETAILS
 - BUILDING LINE OVER
 - PROPERTY BOUNDARY

AMENDED IN RED

By: Elrico Koeberg
Date: 20 May 2025



- NOTES
- REFER TO DRG 2303-010-SK040 FOR PLANT SPECIES SCHEDULE, IMAGES AND GENERAL NOTES
 - REFER ARCHITECTS DRGS FOR ALL FENCE / BALUSTRADE DETAILS
 - REFER TO DRG 2303-010-SK020 -SK22 FOR PODIUM PLANTER DETAILS



PRELIMINARY

C	REVISED ISSUE	JC	14.11.24
B	REVISED ISSUE	JC	01.09.23
rev	description	drawn	date

WREN STREET HEALTH INVESTMENTS PTY LTD
7-15 WREN STREET, BOWEN HILLS
LANDSCAPE CONCEPT PLAN
LEVEL 6 TO 7 - PARKING PLANTING PLAN

LAUD ink
landscape architecture and urban design

Office 7, 915 Ann Street, Fortitude Valley, QLD 4006
E: elaas@laudink.com.au / jane@laudink.com.au
W: www.laudink.com.au
ABN 80 169 838 144

Conditions of Use: This document may only be used by LAUD ink's client (and any other person who LAUD ink has agreed can use this document) for the purpose for which it was prepared and must not be used by any other person or for any other purpose.

scale 1:200 for A1 job no. 2303-010
date NOV 2024 rev no. C

approved E. NICHOLAOU* SK005

ANNOTATION NOTES

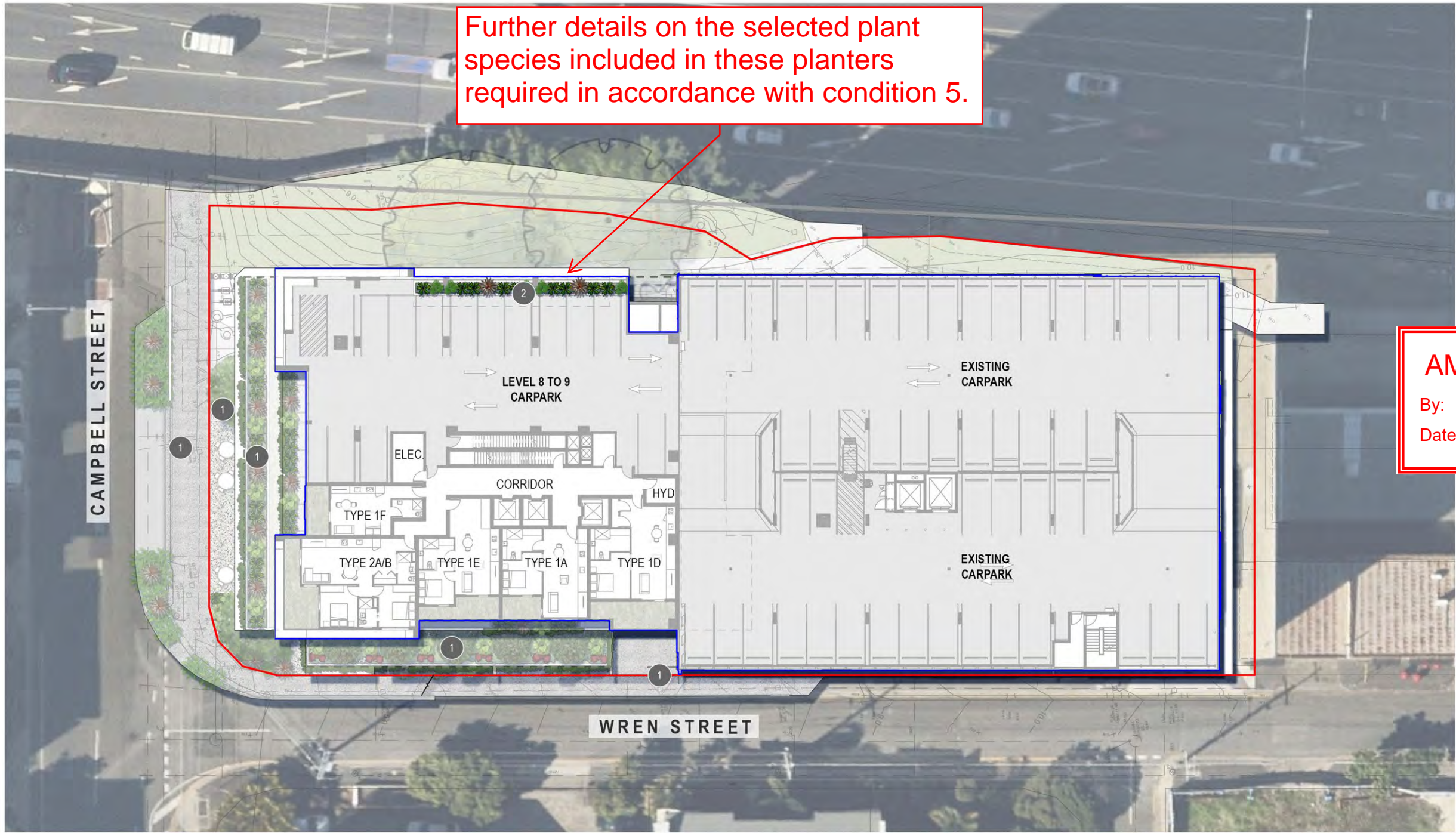
- REFER TO DRAWING 2303-010-SK002 - SK004 FOR LEVELS BELOW DETAILS
- PODIUM PLANTER TO INCLUDE A COMBINATION OF LOW MAINTENANCE AND HARDY SHRUBS ALO MG, CAR mac, CRA ova, PHI XAN AND PIT MM WITH GROUNDCOVERS CRA und, LIR JR, SAN tri AND SEN man
- CASCADING / SPREADING GROUNDCOVERS CAR gla, CAS CI, CIS ant AND DIC SF TO BE POSITIONED AT EDGE OF PODIUM PLANTER TO CASCADE OVER SOFTENING BUILDING FACADE
- HARDY LOW MAINTENANCE SHADE TOLERANT SHRUBS ALC RUB, COR rub, MON del, PHI XAN AND PEP obt TO BE PLANTED TO INTERNAL CARPARK PODIUM PLANTER

PLAN
SCALE 1:200

PLANS AND DOCUMENTS
referred to in the PDA
DEVELOPMENT APPROVAL

Approval no: DEV2024/1479
Date: 18 June 2025





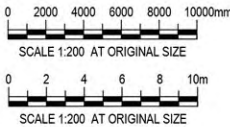
- LEGEND
- PROPOSED SHRUB AND LOW LEVEL PLANTING
 - PROPOSED GROUNDCOVER PLANTING
 - PROPOSED CASCADING PLANTING
 - CONCRETE AREA - REFER CIVIL ENGINEERS DRGS FOR DETAILS
 - PAVED AREA - REFER ARCHITECTS DRGS FOR DETAILS
 - BUILDING LINE OVER
 - PROPERTY BOUNDARY

AMENDED IN RED

By: Elrico Koeberg
Date: 20 May 2025



- NOTES
- REFER TO DRG 2303-010-SK040 FOR PLANT SPECIES SCHEDULE, IMAGES AND GENERAL NOTES
 - REFER ARCHITECTS DRGS FOR ALL FENCE / BALUSTRADE DETAILS
 - REFER TO DRG 2303-010-SK020 -SK22 FOR PODIUM PLANTER DETAILS



PRELIMINARY

C	REVISED ISSUE	JC	14.11.24
B	REVISED ISSUE	JC	01.09.23
rev	description	drawn	date

WREN STREET HEALTH INVESTMENTS PTY LTD
7-15 WREN STREET, BOWEN HILLS
LANDSCAPE CONCEPT PLAN
LEVEL 8 TO 9 - UNITS & CARPARKS PLANTING PLAN

LAUD ink
landscape architecture and urban design

Office 7, 915 Ann Street, Fortitude Valley, QLD 4006
E: elaas@laudink.com.au / jane@laudink.com.au
W: www.laudink.com.au
ABN 80 169 838 144

Conditions of Use: This document may only be used by LAUD ink's client (and any other person who LAUD ink has agreed can use this document) for the purpose for which it was prepared and must not be used by any other person or for any other purpose.

scale 1:200 for A1 job no. 2303-010
date NOV 2024 rev no. C

approved E. NICHOLAOU* SK006

ANNOTATION NOTES

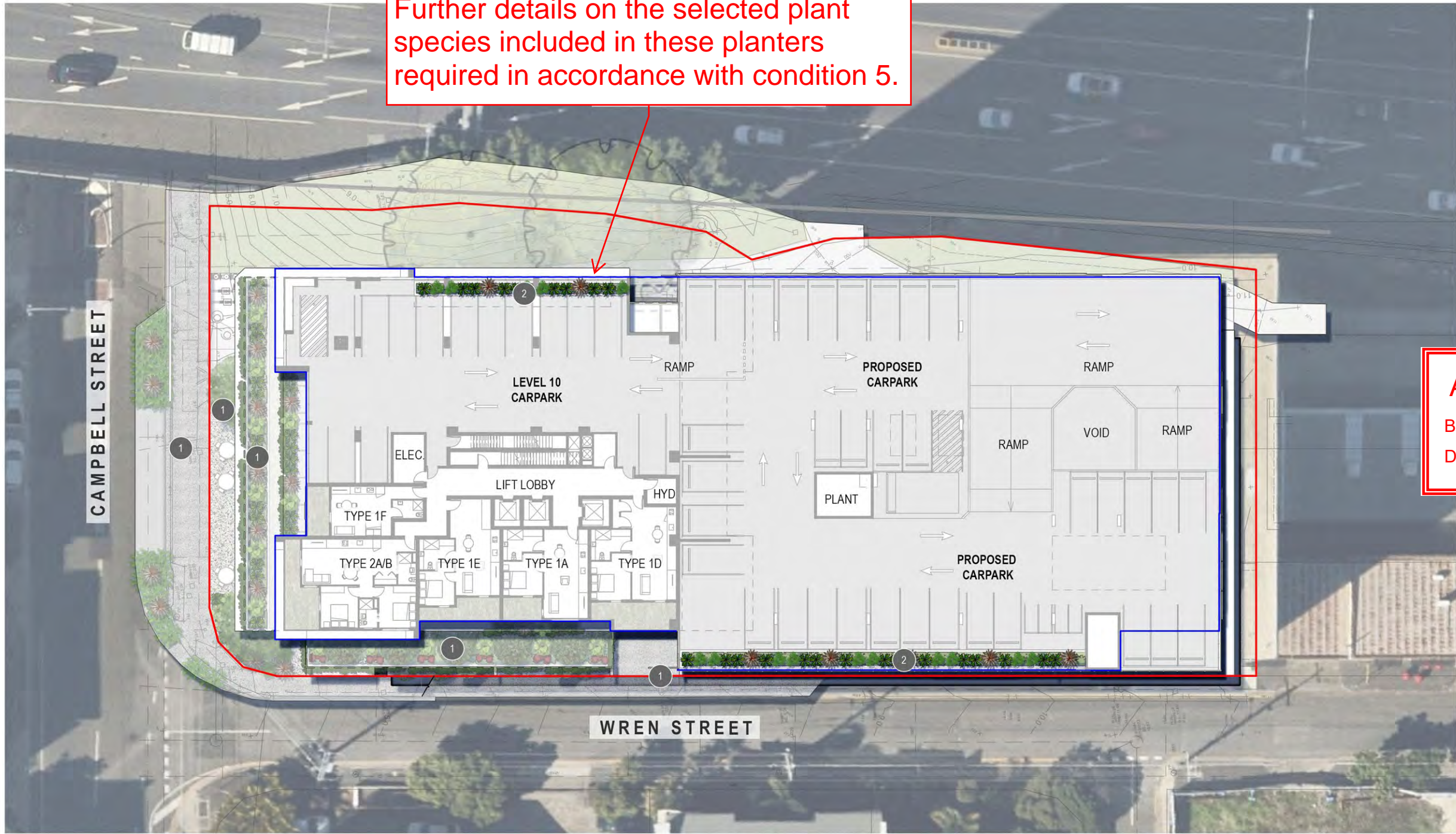
- REFER TO DRAWING 2303-010-SK002 - SK005 FOR LEVELS BELOW DETAILS
- HARDY LOW MAINTENANCE SHADE TOLERANT SHRUBS ALC RUB, COR rub, MON del, PHI XAN AND PEP obt TO BE PLANTED TO INTERNAL CARPARK PODIUM PLANTER

PLAN
SCALE 1:200

PLANS AND DOCUMENTS
referred to in the PDA
DEVELOPMENT APPROVAL

Approval no: DEV2024/1479
Date: 18 June 2025





Further details on the selected plant species included in these planters required in accordance with condition 5.

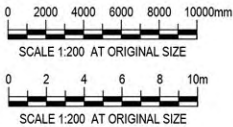
- LEGEND
- PROPOSED SHRUB AND LOW LEVEL PLANTING
 - PROPOSED GROUNDCOVER PLANTING
 - PROPOSED CASCADING PLANTING
 - CONCRETE AREA - REFER CIVIL ENGINEERS DRGS FOR DETAILS
 - PAVED AREA - REFER ARCHITECTS DRGS FOR DETAILS
 - BUILDING LINE OVER
 - PROPERTY BOUNDARY

AMENDED IN RED

By: Elrico Koeberg
Date: 20 May 2025



- NOTES
- REFER TO DRG 2303-010-SK040 FOR PLANT SPECIES SCHEDULE, IMAGES AND GENERAL NOTES
 - REFER ARCHITECTS DRGS FOR ALL FENCE / BALUSTRADE DETAILS
 - REFER TO DRG 2303-010-SK020 -SK22 FOR PODIUM PLANTER DETAILS



PLAN
SCALE 1:200

ANNOTATION NOTES

- 1 REFER TO DRAWING 2303-010-SK002 - SK006 FOR LEVELS BELOW DETAILS
- 2 HARDY LOW MAINTENANCE SHADE TOLERANT SHRUBS ALC RUB, COR rub, MON del, PHI XAN AND PEP obt TO BE PLANTED TO INTERNAL CARPARK PODIUM PLANTER

PLANS AND DOCUMENTS referred to in the PDA DEVELOPMENT APPROVAL
Approval no: DEV2024/1479
Date: 18 June 2025



PRELIMINARY

C	REVISED ISSUE	JC	14.11.24
B	REVISED ISSUE	JC	01.09.23
rev	description	drawn	date

WREN STREET HEALTH INVESTMENTS PTY LTD
7-15 WREN STREET, BOWEN HILLS
LANDSCAPE CONCEPT PLAN
LEVEL 10 - CARPARKS & STAGE 1 ROOF PLANTING PLAN

LAUD ink
landscape architecture and urban design

Office 7, 915 Ann Street, Fortitude Valley, QLD 4006
E: elaas@laudink.com.au / jane@laudink.com.au
W: www.laudink.com.au
ABN 80 169 838 144

Conditions of Use: This document may only be used by LAUD ink's client (and any other person who LAUD ink has agreed can use this document) for the purpose for which it was prepared and must not be used by any other person or for any other purpose.

scale 1:200 for A1 job no. 2303-010
date NOV 2024 rev no. C

approved E. NICHOLAOU* SK007



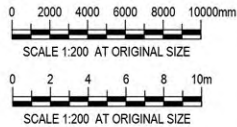
- LEGEND**
- PROPOSED SHRUB AND LOW LEVEL PLANTING
 - PROPOSED GROUNDCOVER PLANTING
 - PROPOSED CASCADING PLANTING
 - CONCRETE AREA - REFER CIVIL ENGINEERS DRGS FOR DETAILS
 - PAVED AREA - REFER ARCHITECTS DRGS FOR DETAILS
 - BUILDING LINE OVER
 - PROPERTY BOUNDARY

PLANS AND DOCUMENTS
referred to in the PDA
DEVELOPMENT APPROVAL

Approval no: **DEV2024/1479**
Date: **18 June 2025**



- NOTES**
- REFER TO DRG 2303-010-SK040 FOR PLANT SPECIES SCHEDULE, IMAGES AND GENERAL NOTES
 - REFER ARCHITECTS DRGS FOR ALL FENCE / BALUSTRADE DETAILS
 - REFER TO DRG 2303-010-SK020 -SK22 FOR PODIUM PLANTER DETAILS



PRELIMINARY

C	REVISED ISSUE	JC	14.11.24
B	REVISED ISSUE	JC	01.09.23
rev	description	drawn	date

WREN STREET HEALTH INVESTMENTS PTY LTD
7-15 WREN STREET, BOWEN HILLS
LANDSCAPE CONCEPT PLAN
LEVEL 11 - UNITS & COMMUNAL AREAS PLANTING PLAN

LAUD ink
landscape architecture and urban design

Office 7, 915 Ann Street, Fortitude Valley, QLD 4006
E: elaas@laudink.com.au / jane@laudink.com.au
W: www.laudink.com.au

ABN 80 169 838 144

Conditions of Use: This document may only be used by LAUD ink's client (and any other person who LAUD ink has agreed can use this document) for the purpose for which it was prepared and must not be used by any other person or for any other purpose.

scale | 1:200 | for A1 | job no. | 2303-010
date | NOV 2024 | rev no. | C

approved | E. NICHOLAOU* | **SK008**

ANNOTATION NOTES

- REFER TO DRAWING 2303-010-SK002 - SK007 FOR LEVELS BELOW DETAILS
- HARDY LOW MAINTENANCE SHADE TOLERANT SHRUBS ALC RUB, COR rub, MON del, PHI XAN AND PEP obt TO BE PLANTED TO PODIUM PLANTER WITH BUILDING / ROOF OVER
- PODIUM PLANTER TO INCLUDE A COMBINATION OF LOW MAINTENANCE AND HARDY SHRUBS ALO MG, CAR mac, CRA ova, PHI XAN AND PIT MM WITH GROUNDCOVERS CRA und, LIR JR, SAN tri AND SEN man
- SMALL FEATURE TREES RAN fit TO PROVIDE AMENITY TO OUTDOOR SEATING AREA. TREES TO BE UNDERPLANTED WITH LOW MAINTENANCE SHRUBS AND GROUNDCOVERS
- CASCADING / SPREADING GROUNDCOVERS CAR gla, CAS CI, CIS ant AND DIC SF TO BE POSITIONED AT EDGE OF PODIUM PLANTER TO CASCADE OVER SOFTENING BUILDING FACADE

CHARACTER REFERENCE IMAGES



1. FEATURE SCREENING TROPICAL SHRUBS WITH CASCADING SPECIES IN PODIUM PLANTER TO PROVIDE BUFFERING AND SOFTEN HARDSTAND OF OUTDOOR SEATING AREA
2. A COMBINATION OF TROPICAL SHRUBS TO CREATE A LAYERED AND TEXTURED LANDSCAPE BUFFER AND VISUAL AMENITY TO POOL
3. CASCADING SPECIES TO SOFTEN PLANTER WALLS AND CASCADE OVER BUILDING EDGE TO PROVIDE VERTICAL GREENING / SOFTENING



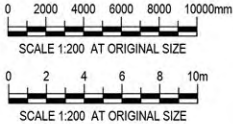
- LEGEND**
- PROPOSED FEATURE TREES
 - PROPOSED SCREENING TREES
 - PROPOSED SHRUB AND LOW LEVEL PLANTING
 - PROPOSED GROUNDCOVER PLANTING
 - PROPOSED BUFFER PLANTING
 - PROPOSED CASCADING PLANTING
 - SYNTHETIC TURF
 - PAVED AREA - REFER ARCHITECTS DRGS FOR DETAILS
 - BUILT-IN TIMBER BENCH SEATING
 - BUILDING LINE OVER
 - PROPERTY BOUNDARY

PLANS AND DOCUMENTS
referred to in the PDA
DEVELOPMENT APPROVAL

Approval no: **DEV2024/1479**
Date: **18 June 2025**



- NOTES**
- REFER TO DRG 2303-010-SK040 FOR PLANT SPECIES SCHEDULE, IMAGES AND GENERAL NOTES
 - REFER ARCHITECTS DRGS FOR ALL FENCE / BALUSTRADE DETAILS
 - REFER TO DRG 2303-010-SK020 -SK22 FOR PODIUM PLANTER DETAILS



PRELIMINARY

C	REVISED ISSUE	JC	14.11.24
B	REVISED ISSUE	JC	01.09.23
rev	description	drawn	date

WREN STREET HEALTH INVESTMENTS PTY LTD
7-15 WREN STREET, BOWEN HILLS
LANDSCAPE CONCEPT PLAN
LEVEL 12 - UNITS & COMMUNAL AREAS PLANTING PLAN

LAUD ink
landscape architecture and urban design

Office 7, 915 Ann Street, Fortitude Valley, QLD 4006
E: elaas@laudink.com.au / jane@laudink.com.au
W: www.laudink.com.au
ABN 80 169 838 144

Conditions of Use: This document may only be used by LAUD ink's client (and any other person who LAUD ink has agreed can use this document) for the purpose for which it was prepared and must not be used by any other person or for any other purpose.

scale | 1:200 | for A1 | job no. | 2303-010
date | NOV 2024 | rev no. | C

approved | E. NICHOLAOU* | **SK009**

ANNOTATION NOTES

- REFER TO DRAWING 2303-010-SK002 - SK008 FOR LOWER LEVEL PLANTING PLAN DETAILS
- COLUMNAR SCREENING TREES ELA eum TO BUFFER INTERFACE BETWEEN UNIT POS AND COS PROVIDING AMENITY AND MAINTAINING PRIVACY. SHRUBS TO BE UNDERPLANTED WITH A COMBINATION OF LUSH TROPICAL SHRUBS AND GROUNDCOVERS AS PER DRG 2303-010-SK040 TO CREATE A DENSE GREEN SCREEN
- A COMBINATION OF TROPICAL SHRUBS ALC rub, ALO ca, ALP mut, CAR mac, STR reg AND ZAM fur TO DEFINE COMMUNAL OPEN SPACE AND SOFTEN HARDSTAND. SHRUBS TO BE UNDERPLANTED WITH GROUNDCOVERS CAR gla, CRA und, SEN cra, SEN man AND ZOY ten
- SMALL FEATURE TREES RAN fit TO DEFINE COS AND PROVIDE SHADED AMENITY. TREES TO BE UNDERPLANTED WITH GROUNDCOVERS DIC SF, SEN man AND ZOY ten
- TERRACED PLANTERS TO BE PLANTED WITH FEATURE SHRUBS ALO cal, CAR mac, ASP ela AND PIT mm WITH GROUNDCOVERS CAR gla, DIE gra, OPH nan AND PEP obt TO ENSURE DENSE, TIERED BUFFER BETWEEN UNIT POS AND COS
- SMALL PLANTERS TO BE PLANTED WITH LOW MAINTENANCE AND HARDY SHRUBS ALC rub, ALP mut, CAR mac AND CRA ova WITH GROUNDCOVERS APT cor, CRA gla, CRA und, SAN tri and SEN cra. CLIMBING SPECIES CIS ant TO BE TRAINED TO PERGOLA TO PROVIDE VERTICAL GREENING
- PERGOLA WITH OUTDOOR DINING / SEATING
- CASCADING / SPREADING GROUNDCOVERS CAR gla, CAS ci, CIS ant AND DIC SF TO BE POSITIONED AT EDGE OF PODIUM PLANTER TO CASCADE OVER SOFTENING BUILDING FACADE
- INDICATIVE OUTDOOR SEATING / TABLES

CHARACTER REFERENCE IMAGES



- RAISED PLANTERS WITH BUILT IN SEATING TO CREATE POCKETS OF SPACES TO CATER FOR VARIOUS GROUP SIZES AND NEEDS E.G. FULL SUN AREAS AND DAPPLED SHADE AREAS
- MULTI PURPOSE LAWN AREAS (SYNTHETIC TURF) WITH MOVEABLE SEATING TO PROVIDE OPPORTUNITIES FOR RECREATION AND SOCIALISATION E.G. OUTDOOR CINEMA, YOGA LAWN AND BOARD GAMES
- A COMBINATION OF CASUAL SEATING AND DINING AREAS WITH TROPICAL PLANTING TO CREATE A LUSH AND SHADED ENVIRONMENT

Refer to approved "Level 30 Plan - Sky Garden" prepared by Thomson Adsett as amended in red 20/05/2025, Document no DA02.14 Rev 7, dated 19/05/2025 for the updated layout of the rooftop communal open space.

LEGEND

PROPOSED SHRUB AND LOW LEVEL PLANTING

PROPOSED GROUNDCOVER PLANTING

PROPOSED CASCADING PLANTING

PAVED AREA - REFER ARCHITECTS DRGS FOR DETAILS

BUILDING LINE OVER

PROPERTY BOUNDARY

AMENDED IN RED

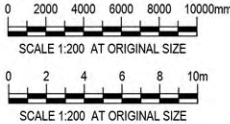
By: Elrico Koeberg
Date: 20 May 2025



- NOTES
1. REFER TO DRG 2303-010-SK040 FOR PLANT SPECIES SCHEDULE, IMAGES AND GENERAL NOTES

2. REFER ARCHITECTS DRGS FOR ALL FENCE / BALUSTRADE DETAILS

3. REFER TO DRG 2303-010-SK020 -SK22 FOR PODIUM PLANTER DETAILS



PRELIMINARY

C	REVISED ISSUE	JC	14.11.24
B	REVISED ISSUE	JC	01.09.23
rev	description	drawn	date

WREN STREET HEALTH INVESTMENTS PTY LTD
7-15 WREN STREET, BOWEN HILLS
LANDSCAPE CONCEPT PLAN
LEVEL 30 - SKY GARDEN PLANTING PLAN

LAUDink

landscape architecture and urban design

Office 7, 915 Ann Street, Fortitude Valley, QLD 4006
E: elaas@laudink.com.au / jane@laudink.com.au
W: www.laudink.com.au

ABN 80 169 838 144

N

Conditions of Use: This document may only be used by LAUD ink's client (and any other person who LAUD ink has agreed can use this document) for the purpose for which it was prepared and must not be used by any other person or for any other purpose.

scale | 1:200 for A1 job no. | 2303-010
date | NOV 2024 rev no. | C

approved | E. NICHOLAOU* SK010

PLAN
SCALE 1:200

ANNOTATION NOTES

- 1

REFER TO DRAWINGS 2303-010-SK002 - SK009 FOR LOWER LEVEL DETAILS
- 2

PODIUM PLANTERS TO BE PLANTED WITH HARDY SHRUBS CAR mac, PHI XAN, PIT MM, ZAM fur AND A COMBINATION OF SUCCULENTS ALO hyb, CRA ova, CRA und, SAN tri, SEN cra AND SEN man
- 3

PODIUM PLANTERS AT OUTDOOR BAR TO BE PLANTED WITH FEATURE SHRUBS CAR mac, PIT MM, STR reg AND A COMBINATION OF SUCCULENTS ALO hyb, CRA ova, CRA und, SAN tri, SEN cra AND SEN man
- 4

CASCADING SPECIES APT cor AND CAS CI TO BE POSITIONED AT EDGE OF PLANTER TO SOFTEN BUILDING FACADE
- 5

INDICATIVE OUTDOOR FURNITURE - REFER TO ARCHITECT DRAWINGS FOR OUTDOOR BAR DETAILS

CHRACTER REFERENCE IMAGES



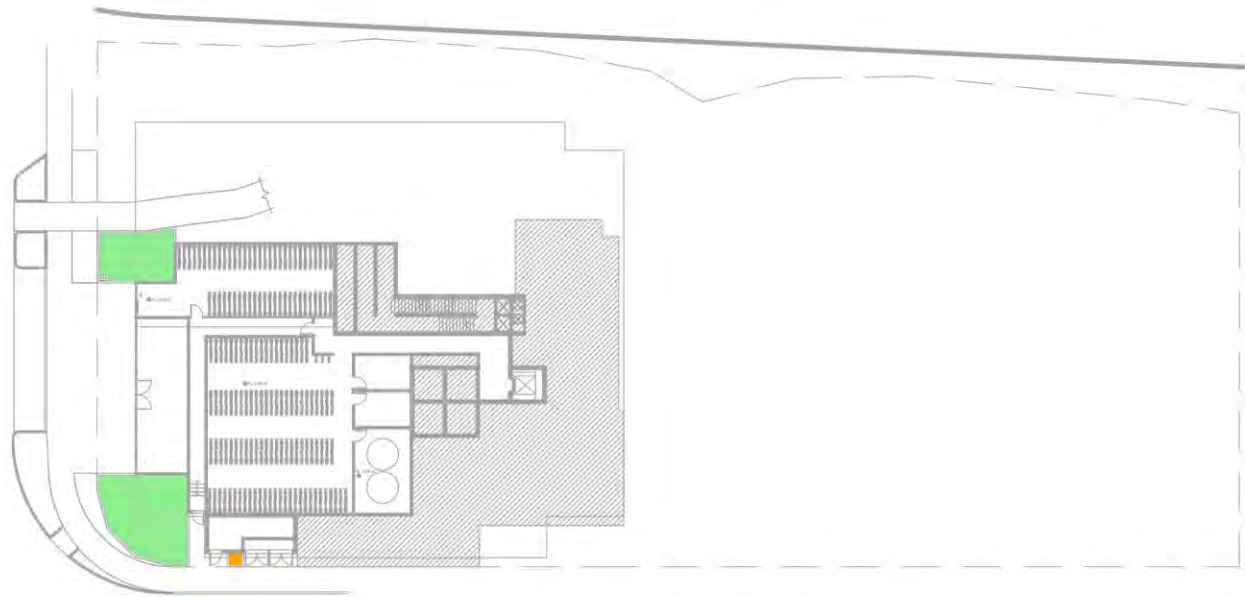
1. CASCADING SPECIES AT EDGE OF PLANTER TO SOFTEN BUILDING FACADE



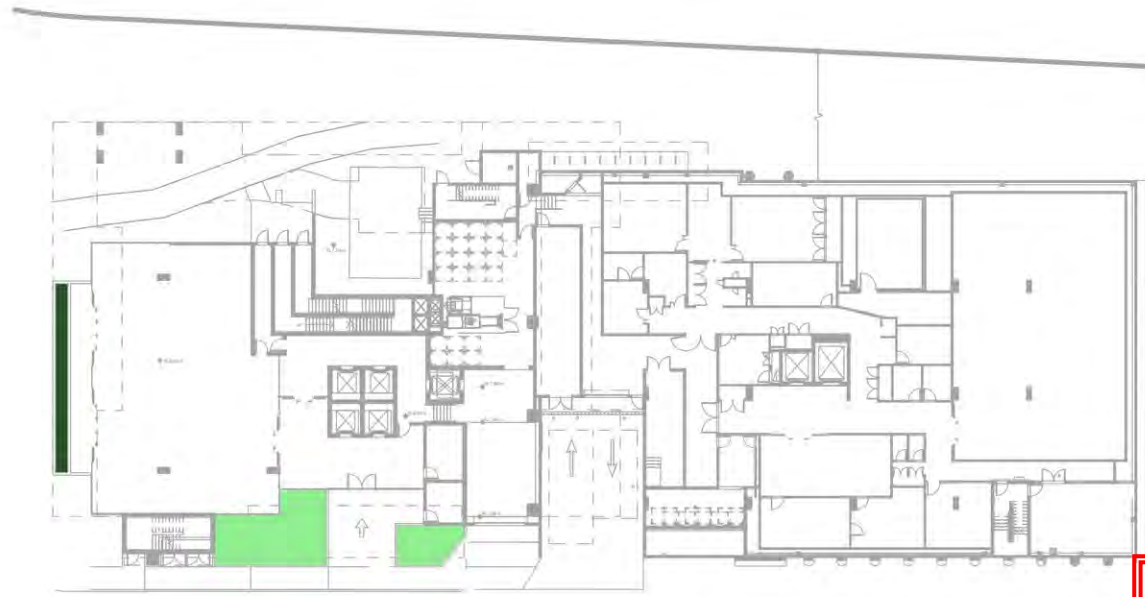
2. PODIUM PLANTERS TO BE PLANTED WITH A COMBINATION OF LOW MAINTENANCE NAD HARDLY SUCCULENTS TO PROVIDE SOFTENING WHILE ENSURING CITY VIEWS ARE MAINTAINED



3. DESIGN INTENT FOR ROOFTOP BAR AND PODIUM PLANTERS



LOWER GROUND FLOOR
NTS



GROUND FLOOR LOBBY
NTS

- LEGEND
- 600mm DEEP PLANTER
 - 1000mm DEEP PLANTER
 - 1200mm DEEP PLANTER
 - DEEP PLANTING IN NATURAL GROUND

PLANS AND DOCUMENTS
referred to in the PDA
DEVELOPMENT APPROVAL

Approval no: DEV2024/1479

Date: 18 June 2025



LEVEL 5 - PARKING
NTS



LEVEL 6 TO 7 - PARKING
NTS

- NOTES
- REFER TO DRGS 2303-010-SK002-SK010 FOR LANDSCAPE CONCEPT PLANS
 - REFER TO DRGS 2303-010-SK022 FOR TYPICAL PODIUM PLANTER DETAILS
 - REFER TO DRG 2303-010-SK040 FOR PLANT SPECIES SCHEDULE, IMAGES AND GENERAL NOTES

PRELIMINARY

C	REVISED ISSUE	JC	14.11.24
B	REVISED ISSUE	JC	01.09.23
rev	description	drawn	date

WREN STREET HEALTH INVESTMENTS PTY LTD
7-15 WREN STREET, BOWEN HILLS
LANDSCAPE CONCEPT PLAN
PODIUM PLANTER STRUCTURE DIAGRAMS - SHEET 1 OF 2

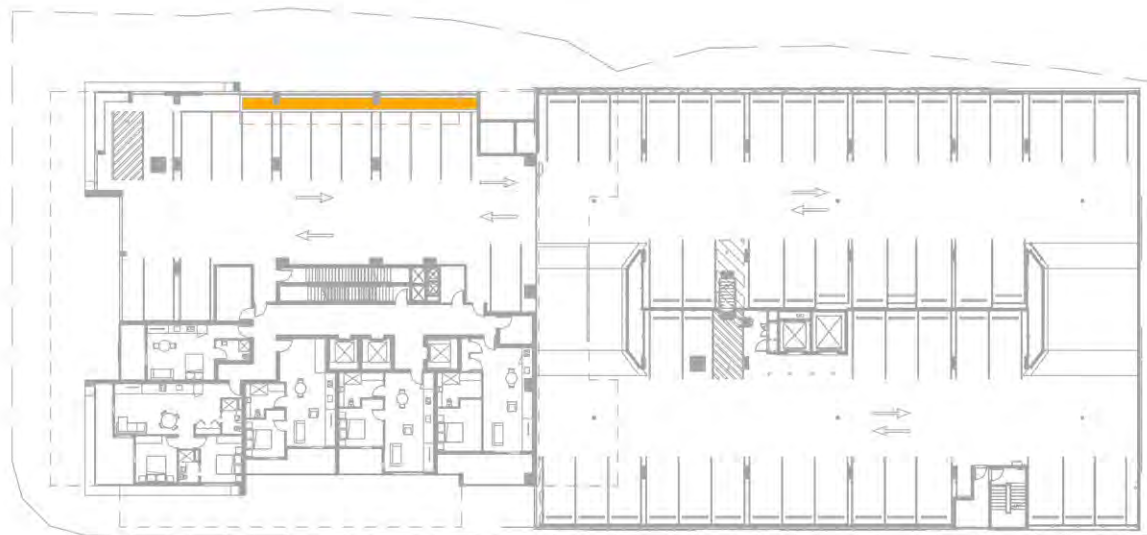
LAUD ink
landscape architecture and urban design

Office 7, 915 Ann Street, Fortitude Valley, QLD 4006
E ela@laudink.com.au / jane@laudink.com.au
W www.laudink.com.au
ABN 80 169 838 144

Conditions of Use: This document may only be used by LAUD ink's client (and any other person who LAUD ink has agreed can use this document) for the purpose for which it was prepared and must not be used by any other person or for any other purpose.

scale NTS for A1 job no. 2303-010
date NOV 2024 rev no. C

approved E. NICHOLAOU* SK020



LEVEL 8 TO 9 - UNITS & CARPARKS
NTS



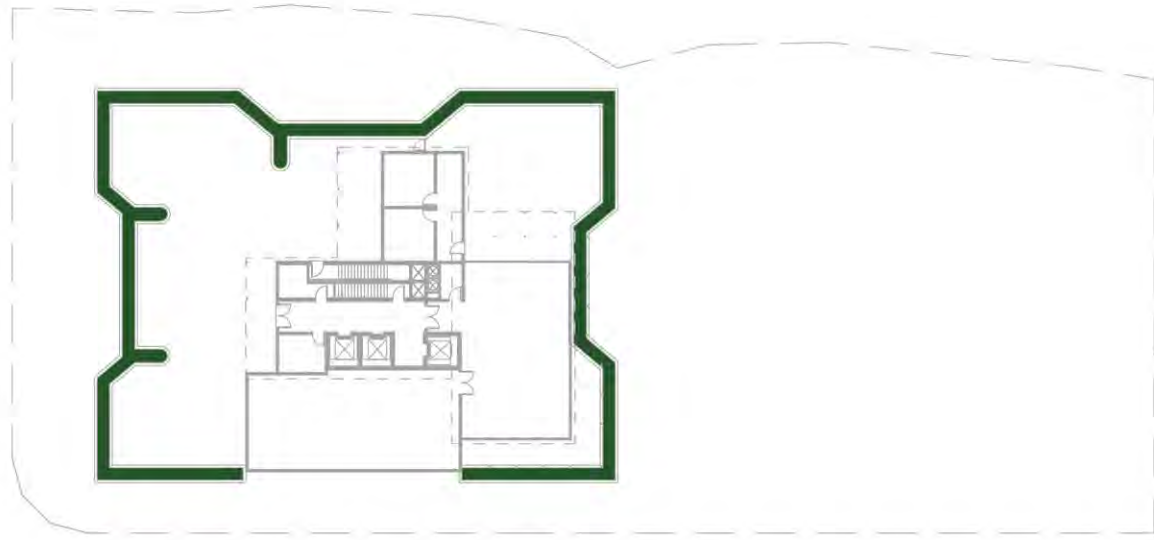
LEVEL 10 - UNITS, CARPARKS & STAGE 1 ROOF
NTS



LEVEL 11 - UNITS & COMMUNAL AREAS
NTS



LEVEL 12 - UNITS & COMMUNAL AREAS
NTS



LEVEL 30 - SKY GARDEN
NTS

LEGEND

600mm DEEP PLANTER


1000mm DEEP PLANTER

1200mm DEEP PLANTER

PLANS AND DOCUMENTS
referred to in the PDA
DEVELOPMENT APPROVAL

Approval no: DEV2024/1479

Date: 18 June 2025



Queensland
Government

- NOTES
- 1. REFER TO DRGS 2303-010-SK002-SK010 FOR LANDSCAPE CONCEPT PLANS
 - 2. REFER TO DRGS 2303-010-SK022 FOR TYPICAL PODIUM PLANTER DETAILS
 - 3. REFER TO DRG 2303-010-SK040 FOR PLANT SPECIES SCHEDULE, IMAGES AND GENERAL NOTES

PRELIMINARY			
C	REVISED ISSUE	JC	14.11.24
B	REVISED ISSUE	JC	01.09.23
rev	description	drawn	date
WREN STREET HEALTH INVESTMENTS PTY LTD 7-15 WREN STREET, BOWEN HILLS LANDSCAPE CONCEPT PLAN PODIUM PLANTER STRUCTURE DIAGRAMS - SHEET 2 OF 2			

LAUDink

landscape architecture and urban design

Office 7, 915 Ann Street, Fortitude Valley, QLD 4006
E elias@laudink.com.au / jane@laudink.com.au
W www.laudink.com.au

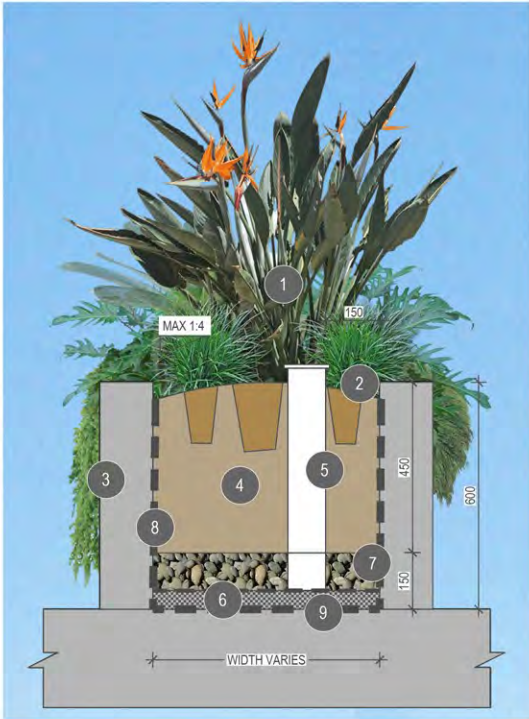
ABN 80 169 838 144



scale	NTS	for A1	job no.	2303-010
date	NOV 2024		rev no.	C
approved	E. NICHOLAOU*			SK021



TYPICAL SHRUBS IN PODIUM DETAIL
SCALE 1:10



TYPICAL SHRUBS IN PODIUM DETAIL
SCALE 1:10



TYPICAL TREE IN PODIUM DETAIL
SCALE 1:10



TYPICAL PALM IN PODIUM DETAIL
SCALE 1:10


TYPICAL PODIUM PLANTER ANNOTATION

- 1 TREES, FEATURE PLANTING AND GROUNDCOVERS AS SPECIFIED
- 2 100mm DEPTH ORGANIC MULCH LAYER, TO FINISH 25mm BELOW TOP OF ADJACENT WALL WITH PLANTING MEDIA TO BE MOUNDED (MAX GRADE 1:4)
- 3 REFER ARCHITECTS PROJECT FINISHES AND FITMENTS SCHEDULE FOR PLANTER WALL FINISHES DETAILS
- 4 PLANTING MEDIA SHALL BE MINERAL BASED WITH LOW ORGANIC MATTER AND SHALL COMPLY WITH TABLE 1, "AS4419-2003" SOILS FOR LANDSCAPING AND GARDEN USE". PLANTING MEDIA MIX 1 TO HAVE 5-10% ORGANIC MATTER
- 5 INSPECTION OPENING - 100 PVC PIPE WITH CAP
- 6 GEOTEXTILE MEMBRANE
- 7 MINIMUM 100mm WASHED COARSE RIVER SAND
- 8 WATER PROOFING MEMBRANE
- 9 30mm DRAINAGE CELL - CONNECTED TO DRAINAGE SYSTEM. REFER TO HYDRAULIC DRAWINGS FOR POINT OF CONNECTION
- 10 PLANTING MEDIA MIX TYPE 2 TO COMPLY WITH THE ABOVE STANDARDS AND TO HAVE AN ORGANIC MATTER LESS THAN 5%


PRELIMINARY

C	REVISED ISSUE	JC	14.11.24
B	REVISED ISSUE	JC	01.09.23
rev	description	drawn	date

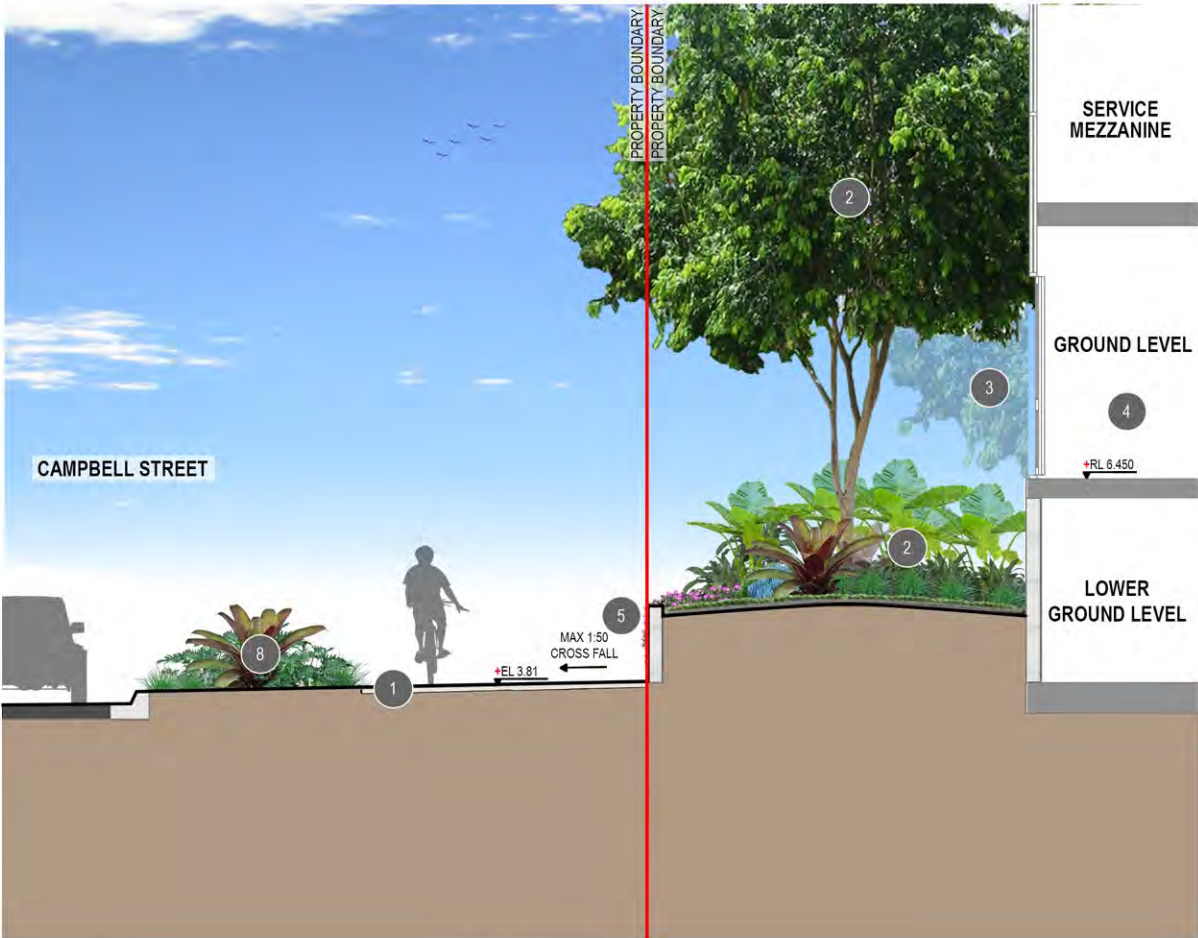
WREN STREET HEALTH INVESTMENTS PTY LTD
7-15 WREN STREET, BOWEN HILLS
LANDSCAPE CONCEPT PLAN
TYPICAL PODIUM PLANTER DETAILS


landscape architecture and urban design

Office 7, 915 Ann Street, Fortitude Valley, QLD 4006
E: elaas@laudink.com.au / jane@laudink.com.au
W: www.laudink.com.au
ABN 80 169 838 144


SCALE 1:10 AT ORIGINAL SIZE

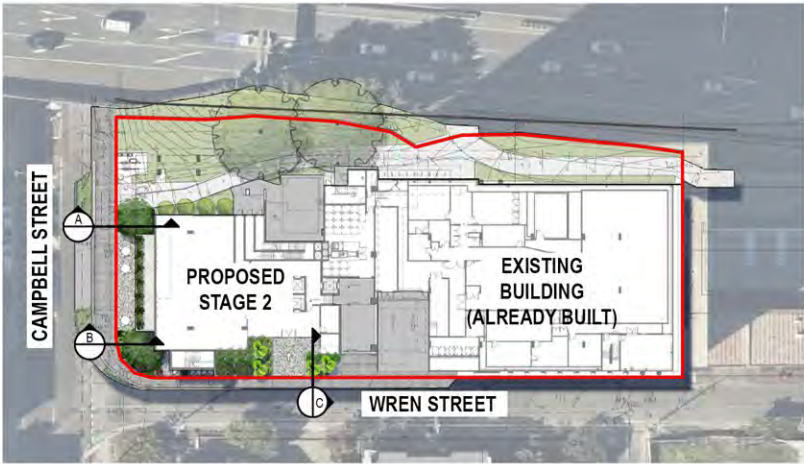
scale	1:10	for A1	job no.	2303-010
date	NOV 2024	rev no.	C	
approved	E. NICHOLAOU*			SK022



SECTION A
SCALE 1:50



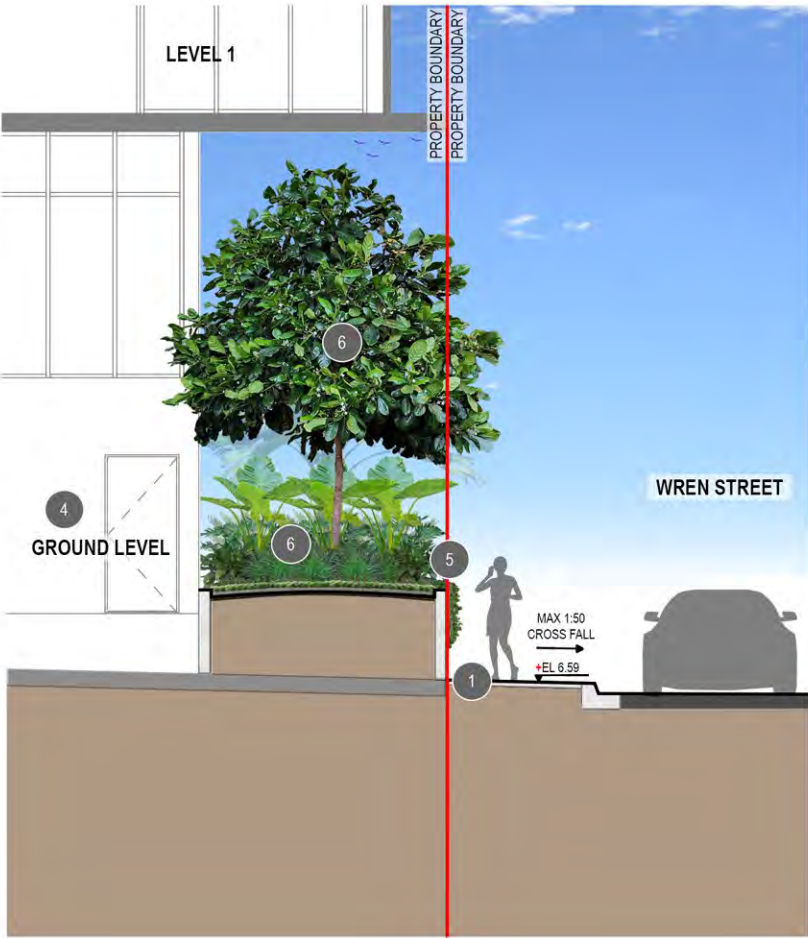
SECTION B
SCALE 1:50



KEY PLAN
NTS

PLANS AND DOCUMENTS
referred to in the PDA
DEVELOPMENT APPROVAL

Approval no: DEV2024/1479
Date: 18 June 2025



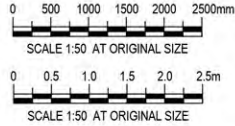
SECTION C
SCALE 1:50

ANNOTATION NOTES

1. PROPOSED PAVEMENT VICTORIA FALLS EXPOSED AGGREGATE (HANSON, BORAL OR APPROVED EQUIVALENT) AS PER BCC STREETSCAPE HIERARCHY REQUIREMENTS - CENTRE STREET MINOR
2. LARGE SUB TROPICAL SHADE TREES WAT flo TO BUFFER EXISTING BIKE PATH AND SOFTEN CAMPBELL STREET FRONTAGE. TREE TO BE UNDERPLANTED WITH SHRUBS ALO cal, ALP mut, CAR mac, COR rub AND GROUNDCOVERS CAR gla, DIE gra, SEN man AND ZOY ten
3. EXISTING VEGETATION TO BE RETAINED AND REINSTATED WHERE IMPACTED BY BUILDING WORKS. REINSTATED VEGETATION TO CONSIST OF SHRUBS CAR mac AND PHI XAN WITH GROUNDCOVERS DIE gra, LIR JR AND LOM TC TO PROVIDE FULL COVERAGE OF GARDEN BEDS. GARDEN BEDS TO BE REMULCHED WHERE REQUIRED
4. REFER TO ARCHITECTS DRAWINGS FOR INTERNAL DETAILS
5. CASCADING SPECIES TO BE POSITIONED AT EDGE OF PLANTERS TO SOFTEN STREETSCAPE INTERFACE AND BUILT FORM
6. PSOPOSED SMALL TREE RAN fit TO DEFINE MAIN ENTRANCE AND SOFTEN HARDSTAND. PALMS TO BE UNDERPLANTED WITH SHRUBS ALO cal, ASP ela, PHI XAN, PIT MM AND ZAM fur, AND GROUNDCOVERS APT cor, CAR gla, CRA und, LIR JR AND OPH NAN
7. BALCONY PODIUM PLANTER TO INCLUDE SHRUBS PHI XAN AND ZAM fur WITH GROUNDCOVERS CAR gla, LIR JR, SEN man
8. LOW SHRUBS AND GROUNDCOVERS TO SOFTEN HARDSTAND

NOTES

1. REFER TO DRGS 2303-010-SK002-SK010 FOR LANDSCAPE CONCEPT PLANS
2. REFER TO DRGS 2303-010-SK022 FOR TYPICAL PODIUM PLANTER DETAILS
3. REFER TO DRG 2303-010-SK040 FOR PLANT SPECIES SCHEDULE, IMAGES AND GENERAL NOTES



PRELIMINARY

C	REVISED ISSUE	JC	14.11.24
B	REVISED ISSUE	JC	01.09.23
rev	description	drawn	date

WREN STREET HEALTH INVESTMENTS PTY LTD
7-15 WREN STREET, BOWEN HILLS
LANDSCAPE CONCEPT PLAN
SECTIONS

LAUD ink
landscape architecture and urban design

Office 7, 915 Ann Street, Fortitude Valley, QLD 4006
E: elias@laudink.com.au / jane@laudink.com.au
W: www.laudink.com.au
ABN 80 169 838 144

Conditions of Use: This document may only be used by LAUD ink's client (and any other person who LAUD ink has agreed can use this document) for the purpose for which it was prepared and must not be used by any other person or for any other purpose.

scale 1:50 for A1 job no. 2303-010
date NOV 2024 rev no. C

approved E. NICHOLAOU* SK030

PROPOSED PLANT SPECIES IMAGES

TREES



CUPANIOPSIS anacardioides



ELAEOCARPUS eumundii



LICUALA grandis



RANDIA fitzalanii



WATERHOUSEA floribunda

SHRUBS



ALCANTAREA imperialis rubra



ALOCASIA calidora



ALPINIA mutica



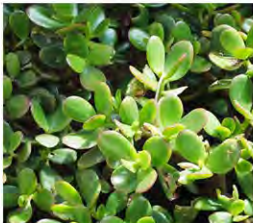
ASPIDISTRA elatior



CARISSA macrocarpa



CORDYLINE fruticosa 'Rubra'



CRASSULA ovata



HELICONIA bihai x caribaea
'Hot Rio Nights'



MONSTERA deliciosa



PHILODENDRON 'Xanadu'



PITTOSPORUM 'Miss Muffet'



RHAPIS excelsa



STRELITZIA reginae



SYZYGium australe
'Straight and Narrow'



ZAMIA furfuracea

PLANS AND DOCUMENTS
referred to in the PDA
DEVELOPMENT APPROVAL

Approval no: DEV2024/1479

Date: 18 June 2025



Queensland
Government

GROUNDCOVERS



ALOE hybrid
'Mighty Gold'



APTENIA cordifolia



CARPOBROTUS glaucescens



CASUARINA glauca



CISSUS antarctica



CRASSULA arborescens
undulatifolia



DICHONDRA 'Silver Falls'



DIETES grandiflora



LIRIOPE muscari 'Just Right'



LOMANDRA 'Tropic Cascade'



OPHIOPOGON japonicus
'Nanus'



PEPEROMIA obtusifolia



SANSEVIERIA trifasciata



SENEIO crassissimus



SENEIO mandraliscae



ZOYSIA tenuifolia

AMENDED IN RED

By: Elrico Koeberg

Date: 20 May 2025



Queensland
Government

PROPOSED PLANT SPECIES SCHEDULE

CODE	PLANT SPECIES	COMMON NAME	CENTRES (mm)	POT SIZE	APPROX. HEIGHT (AT MATURITY) (H x W)
TREES					
CUP ana	CUPANIOPSIS anacardioides	Tuckeroo	AS SHOWN	25L	10m x 4m
ELA eum	ELAEOCARPUS eumundii	Eumundii Quandong	AS SHOWN	25L	8-10m x 3-5m
LIC gra	LICUALA grandis	Ruffled Fan Palm	AS SHOWN	25L	2-4m x 2-4m
RAN fit	RANDIA fitzalanii	Native Gardenia	AS SHOWN	25L	6-10m x 2-4m
WAT flo	WATERHOUSEA floribunda	Weeping Lilly Pilly	AS SHOWN	25L	10m - 8m
SHRUBS					
ALC RUB	ALCANTAREA imperialis 'Rubra'	Imperial Bromeliad	750mm	200mm	
ALO cal	ALOCASIA calidora	Dwarf Elephant Ears	1000mm	200mm	
ALP mut	ALPINIA mutica	False Cardamom Ginger	700mm	200mm	
ASP ela	ASPIDISTRA elatior	Cast-Iron Plant	700mm	200mm	
CAR mac	CARISSA macrocarpa	Desert Star	500mm	300mm	
COR RUB	CORDYLINE fruticosa 'Rubra'	Cordyline Rubra	700mm	200mm	
CRA ova	CRASSULA ovata	Jade Plant	500mm	300mm	
HEL HRN	HELICONIA bihai x caribaea 'Hot Rio Nights'	Heliconia Hot Rio Nights	1000mm	200mm	
MON del	MONSTERA deliciosa	Swiss Cheese Plant	700mm	200mm	
PHI XAN	PHILODENDRON 'Xanadu'	Xanadu	500mm	300mm	
PIT MM	PITTOSPORUM tobria 'Miss Muffet'	Miss Muffet	500mm	300mm	
RHA exc	RHAPIS excelsa	Lady Palm	750mm	200mm	
STR reg	STRELITZIA reginae	Bird of Paradise	750mm	200mm	
SYZ SN	SYZYGium australe 'Straight & Narrow' - 'SAN01'	Straight and Narrow	1000mm	300mm	
ZAM fur	ZAMIA furfuracea	Cardboard Palm	750mm	200mm	
GROUND COVER					
ALO MG	ALOE hybrid 'Mighty Gold'	Mighty Gold	500mm	300mm	
APT cor	APTENIA cordifolia	Baby Sunrose	350mm	200mm	
CAR gla	CARPOBROTUS glaucescens	Pigface	500mm	140mm	
CAS Ci	CASUARINA glauca 'Cousin It'	Cousin It	350mm	140mm	
CIS ant	CISSUS antarctica	Kangaroo Vine	500mm	140mm	
CRA und	CRASSULA arborescens undulatifolia	Ripple Jade	500mm	140mm	
DIC SF	DICHONDRA 'Silver Falls'	Silver Falls	350mm	140mm	
DIE gra	DIETES grandiflora	Large Wild Iris	500mm	140mm	
LIR JR	LIRIOPE muscari 'Just Right' - 'LIRJ'	Just Right	500mm	140mm	
LOM TC	LOMANDRA hystrix 'Tropic Cascade' - 'LMWP'	Tropic Cascad Mat Rush	500mm	140mm	
OPH NAN	OPHIOPOGON japonicus 'Nanus'	Mondo Grass Dwarf	250mm	140mm	
PEP obt	PEPEROMIA obtusifolia	Baby Rubber Plant	350mm	140mm	
SAN tri	SANSEVIERIA trifasciata	Mother-in-law's tongue	500mm	140mm	
SEN cra	SENECIO crassicaulis	Vertical Leaf	500mm	300mm	
SEN man	SENECIO mandraliscae	Blue Chalk Sticks	500mm	140mm	
ZOY ten	ZOYSIA tenuifolia	Korean Velvet Grass	250mm	140mm	

NOTES

- REFER TO LANDSCAPE CONCEPT PLANS 2303-010-SK002 TO SK006 FOR PROPOSED PLANTING DESIGN
- REFER TO CIVIL ENGINEERS DRAWINGS FOR DRIVEWAY AND CROSSOVER DETAILS
- REFER TO ARCHITECTS DRAWINGS FOR ALL FENCE DETAILS
- LANDSCAPE DETAILED DESIGN IS TO BE COORDINATED WITH HYDRAULIC AND ENGINEERING DESIGN TO CONFIRM LOCATIONS OF UNDERGROUND SERVICES PRIOR TO CONSTRUCTION
- LANDSCAPE GENERAL STANDARDS.
 - CULTIVATION MINIMUM DEPTH 150mm FOR TURFED AREAS AND PLANTING AREAS
 - IMPORTED TOPSOIL TO AS 4419. MINIMUM DEPTHS, GRASSED AREAS (TURF) 100mm, PLANTING AREAS 300mm.
 - MULCH TO AS 4454 PROVIDE MULCH WHICH IS FREE OF DELETERIOUS AND EXTRANEIOUS MATTER SUCH AS SOIL, WEEDS AND STICKS.
 - STAKE SIZES FOR PLANTS 1-2.5m HEIGHT TWO 50 x 50 x 1800mm STAKES PER PLANT PROVIDE TIES FIXED SECURELY TO THE STAKES, ONE TIE AT HALF THE HEIGHT OF THE MAIN STEM, OTHERS AS NECESSARY TO STABILISE PLANT. FOR PLANTS <2.5m HIGH 50mm HESSIAN WEBBING STAPLED TO THE STAKES.
- FOR ALL STREETScape WORKS REFER TO THE FOLLOWING BRISBANE CITY COUNCIL STANDARD DRAWINGS FOR LANDSCAPE CONSTRUCTION DETAILS:
 - SOFTWARES:
 - 1.1 BSD-9051 PLANTING GENERAL NOTES SHEET 1
 - 1.2 BSD-9051 PLANTING GENERAL NOTES SHEET 2
 - 1.3 BSD-9052 PLANTING MEDIA PROFILES (TURF AND GARDEN)
 - 1.4 BSD-9053 PLANTING - TYPICAL TREE, SHRUB & TUBE STOCK
 - 1.5 BSD-9082 ROOT DEFLECTOR INSTALLATION ADJACENT TO EXISTING ROAD AND STRUCTURES
 - ALL BCC STANDARD DRAWINGS ARE TO BE READ IN CONJUNCTION WITH THE FOLLOWING BRISBANE CITY COUNCIL TECHNICAL REFERENCE SPECIFICATIONS:
 - 1.1 S190 LANDSCAPING

PRELIMINARY

C	REVISED ISSUE	JC	14.11.24
B	REVISED ISSUE	JC	01.09.23
rev	description	drawn	date

WREN STREET HEALTH INVESTMENTS PTY LTD
7-15 WREN STREET, BOWEN HILLS
LANDSCAPE CONCEPT PLAN
PLANTING SPECIES SCHEDULES, IMAGES & NOTES



Office 7, 915 Ann Street, Fortitude Valley, QLD 4006
E: elrico@laudink.com.au / jane@laudink.com.au
W: www.laudink.com.au

ABN 80 169 838 144

Conditions of Use: This document may only be used by LAUD ink's client (and any other person who LAUD ink has agreed can use this document) for the purpose for which it was prepared and must not be used by any other person or for any other purpose.

scale NTS for A1 job no. 2303-010
date NOV 2024 rev no. C

approved E. NICHOLAOU* SK040