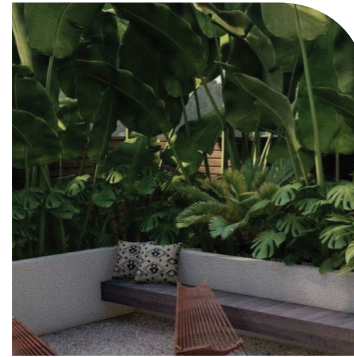
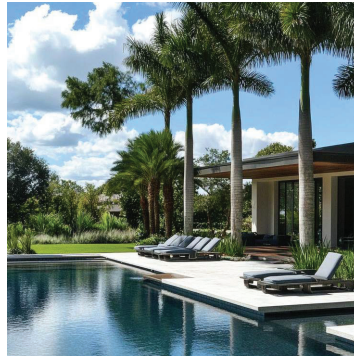


PLANS AND DOCUMENTS  
referred to in the PDA  
DEVELOPMENT APPROVAL

Approval no: DEV2025/1602  
Date: 27 May 2025



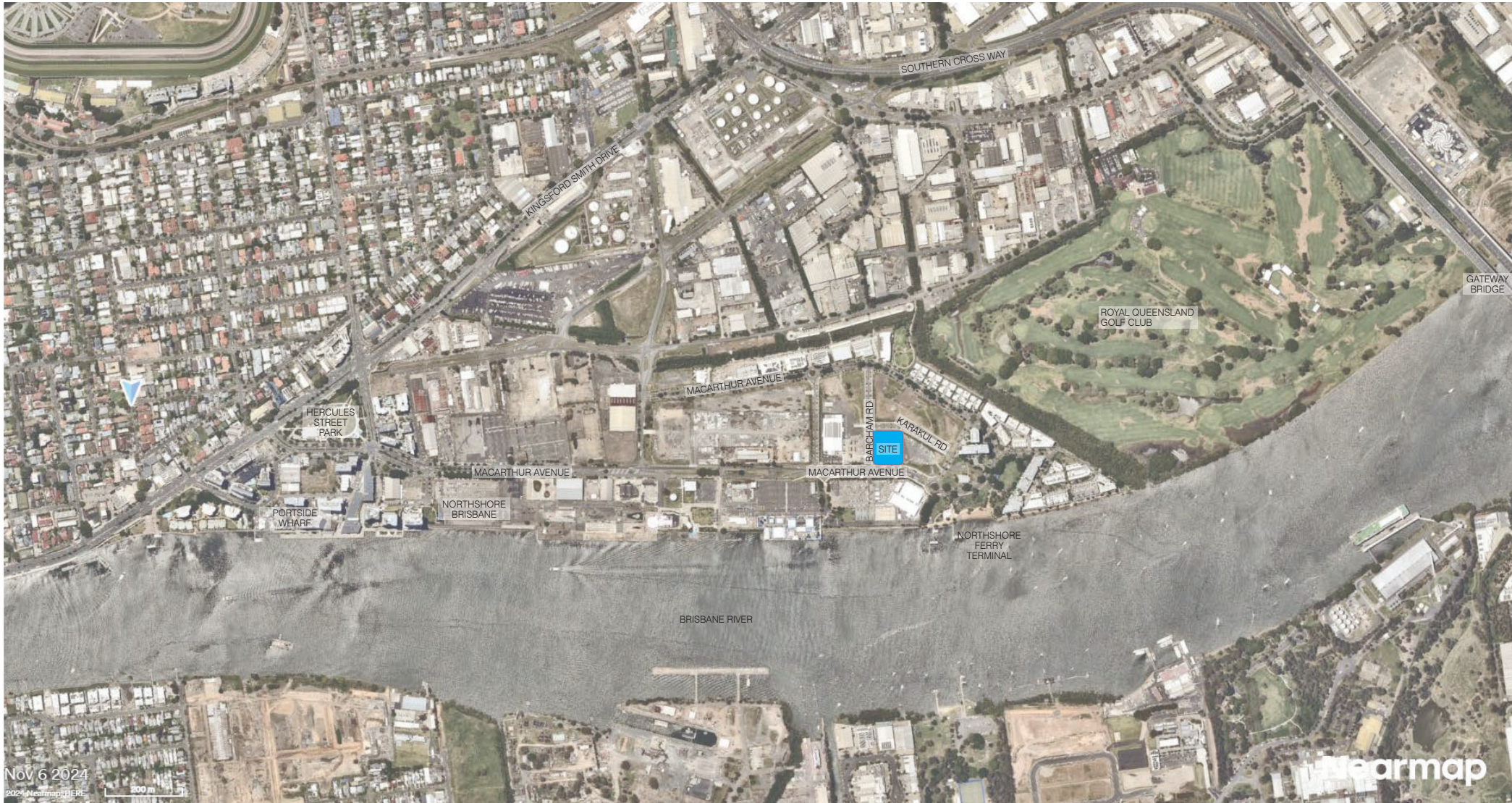
## CONTENTS

LOCATION PLAN	SD-02
PRECINCT MASTERPLAN	SD-03
LANDSCAPE PLAN - GROUND LEVEL	SD-04
LANDSCAPE PLAN - LEVEL 01	SD-05
LANDSCAPE PLAN - LEVEL 02	SD-06
LANDSCAPE PLAN - LEVELS 03 - 16	SD-07
LANDSCAPE PLAN - ROOF TERRACE	SD-08
LANDSCAPE ANALYSIS	SD-09
LANDSCAPE SECTIONS	SD-10
LANDSCAPE SECTIONS	SD-11
LANDSCAPE DETAILS - SOIL DEPTHS	SD-12
PLANTER MAINTENANCE PLAN	SD-13
LANDSCAPE CHARACTER	SD-14
INDICATIVE MATERIALS PALETTE	SD-15
INDICATIVE PLANTING PALETTE	SD-16

# SCHEMATIC DESIGN

330 MacArthur Ave on part of Lot 6 on SP326594





# LOCATION PLAN

SCHEMATIC DESIGN | LOT 18B HAMILTON



**DUNN  
MORAN**  
LANDSCAPE ARCHITECTS

2404601 SD-02  
2025-03-12 ISSUE D  
Copyright by Dunn + Moran Landscape Architects Pty Ltd. This drawing or parts thereof may not be reproduced for any purpose without the consent of Dunn + Moran Landscape Architects.





# PRECINCT MASTERPLAN

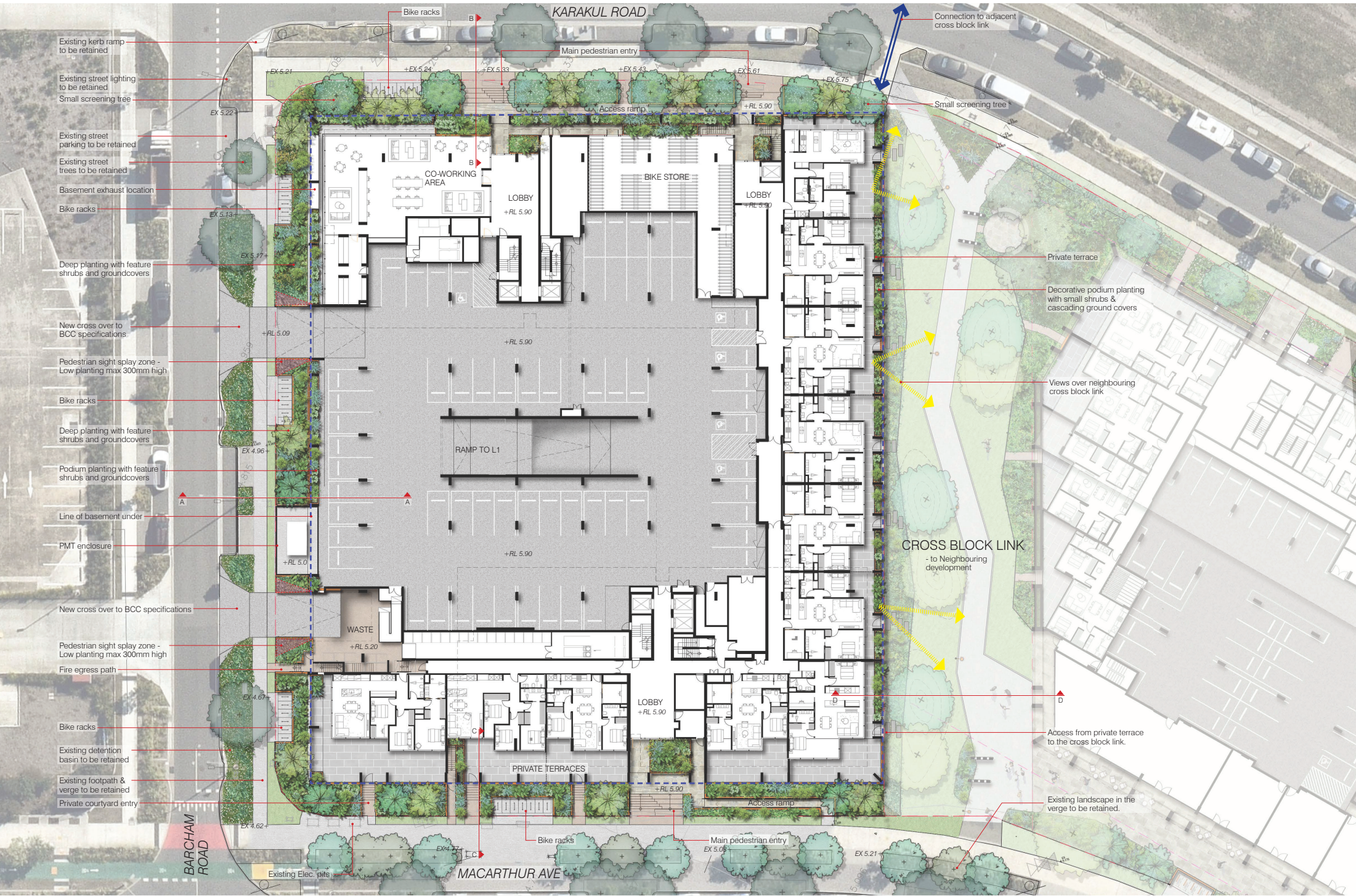
SCHEMATIC DESIGN | LOT 18B HAMILTON



**DUNN MORAN**  
LANDSCAPE ARCHITECTS

2404601 SD-03  
2025-03-12 ISSUE D  
Copyright by Dunn + Moran Landscape Architects Pty Ltd. This drawing or parts thereof may not be reproduced for any purpose without the consent of Dunn + Moran Landscape Architects.

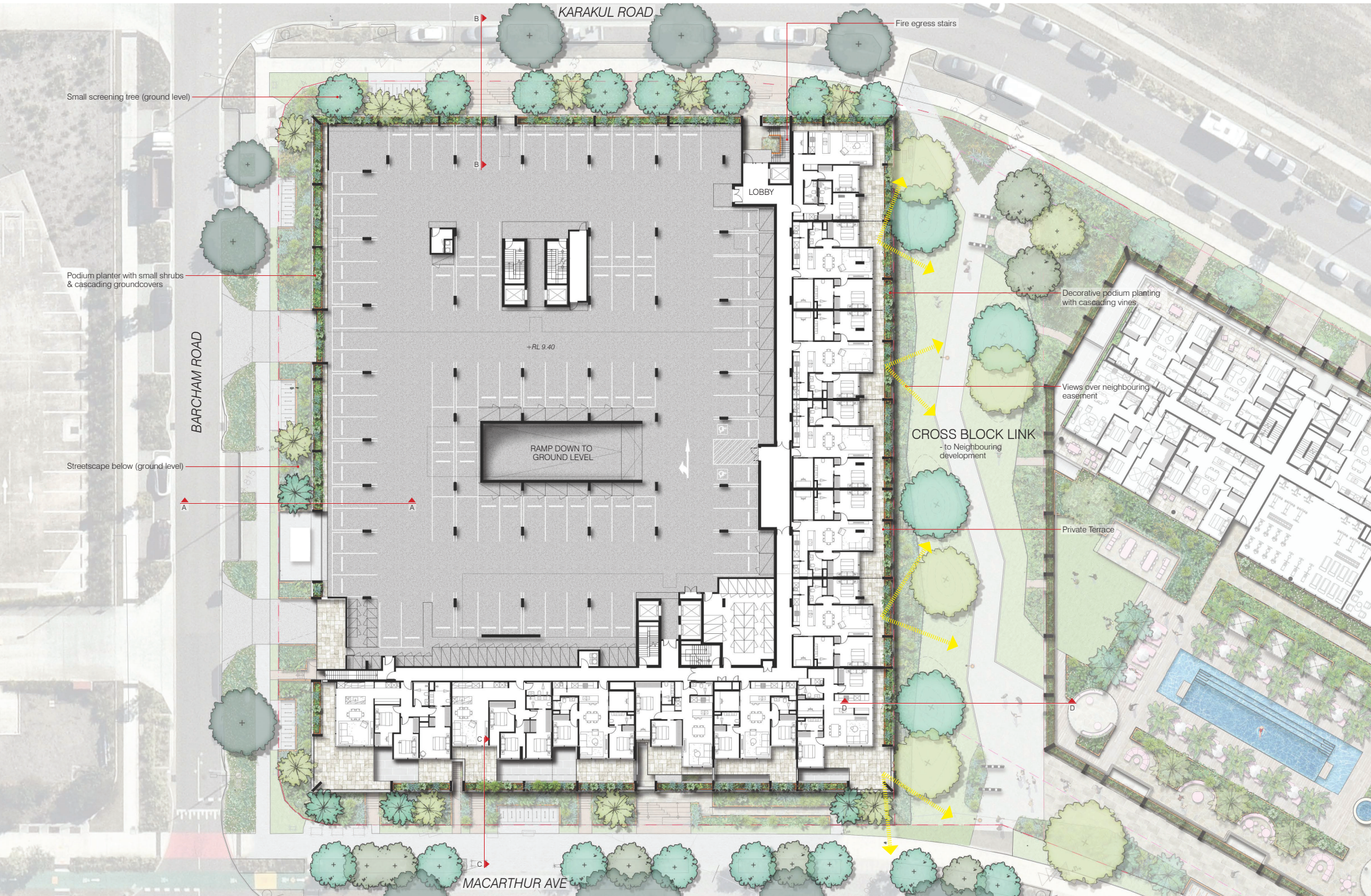




LANDSCAPE PLAN - GROUND LEVEL

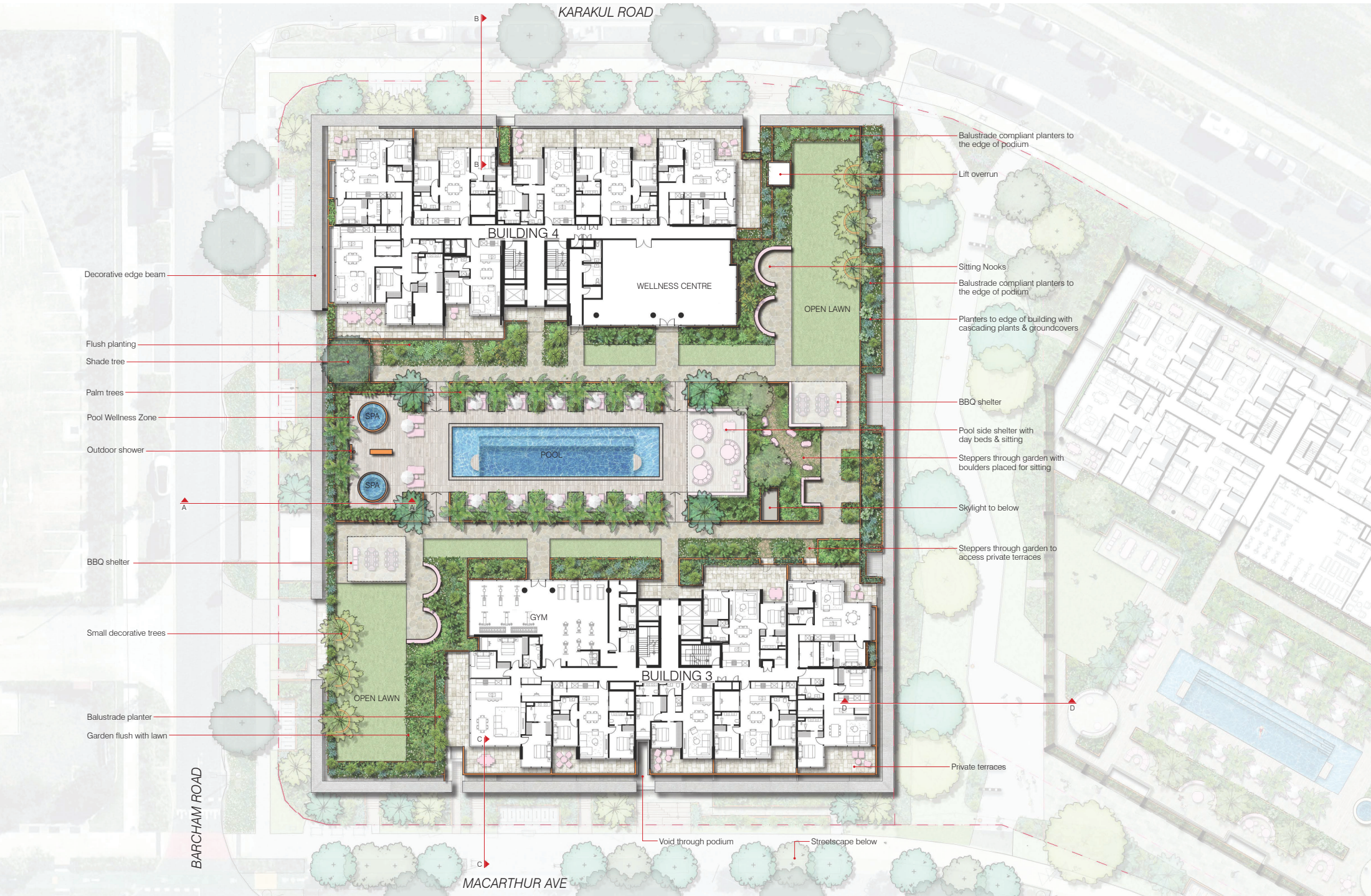
SCHEMATIC DESIGN | LOT 18B HAMILTON





LANDSCAPE PLAN - LEVEL 01 - PODIUM  
SCHEMATIC DESIGN | LOT 18B HAMILTON





LANDSCAPE PLAN - LEVEL 02 - PODIUM  
SCHEMATIC DESIGN | LOT 18B HAMILTON



BARHAM ROAD

KARAKUL ROAD

MACARTHUR AVE

BUILDING 4

BUILDING 3

Decorative podium planting with cascading groundcovers

Private balcony

Green roof to BBQ shelter

Green roof to pool shelter

Decorative podium planting with cascading groundcovers

Green roof to BBQ shelter

A

C

D

# LANDSCAPE PLAN - LEVELS 03 - 16 - TYPICAL

SCHEMATIC DESIGN | LOT 18B HAMILTON



**DUNN MORAN**  
LANDSCAPE ARCHITECTS

2404601 SD-07  
2025-03-12 ISSUE D  
Copyright by Dunn + Moran Landscape Architects Pty Ltd. This drawing or parts thereof may not be reproduced for any purpose without the consent of Dunn + Moran Landscape Architects.



KARAKUL ROAD

Plant area  
Lift overrun  
Roof below

BARHAM ROAD

BUILDING 4

Roof below  
Roof top spill out area  
Balustrade compliant planter  
Shelter over

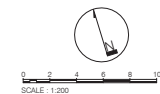
BUILDING 3

Plant area

MACARTHUR AVE

# LANDSCAPE PLAN - ROOF TERRACE

SCHEMATIC DESIGN | LOT 18B HAMILTON



**DUNN MORAN**  
LANDSCAPE ARCHITECTS

2404601 SD-08  
2025-03-12 ISSUE D  
Copyright by Dunn + Moran Landscape Architects Pty Ltd. This drawing or parts thereof may not be reproduced for any purpose without the consent of Dunn + Moran Landscape Architects.



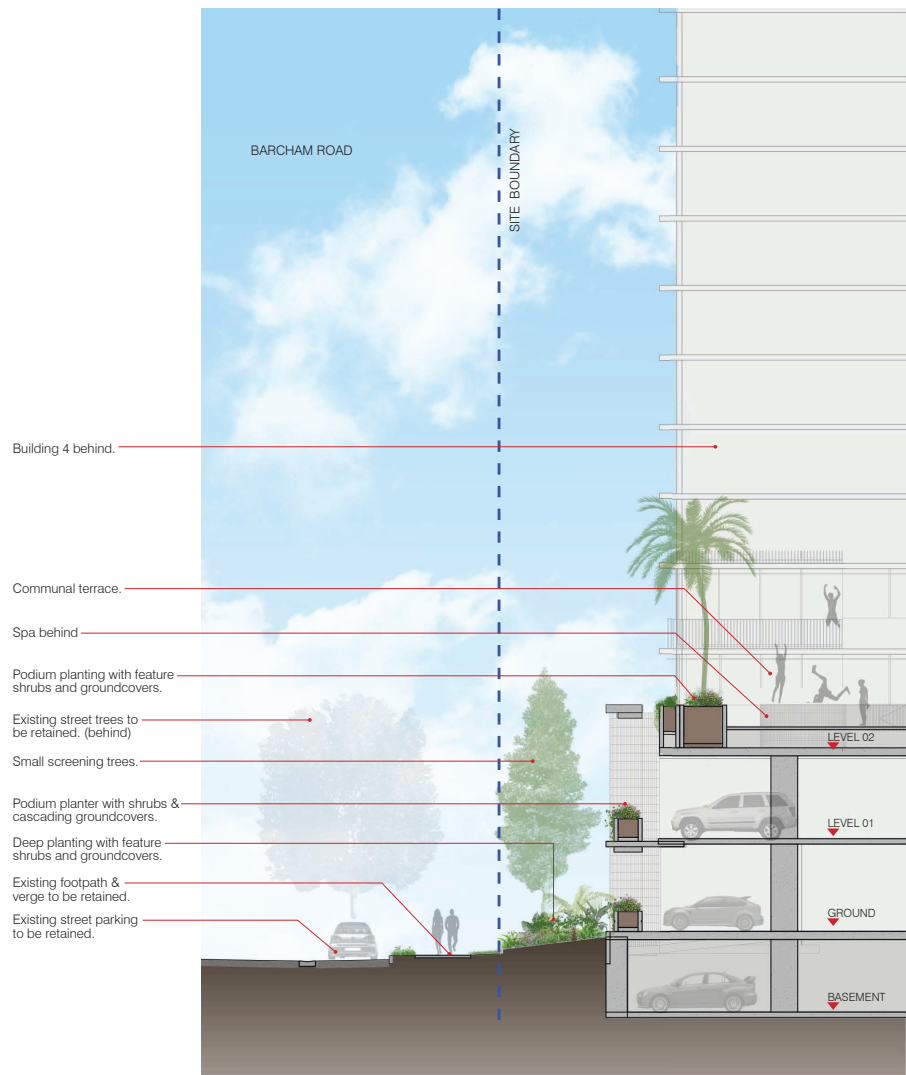


ANALYSIS KEY

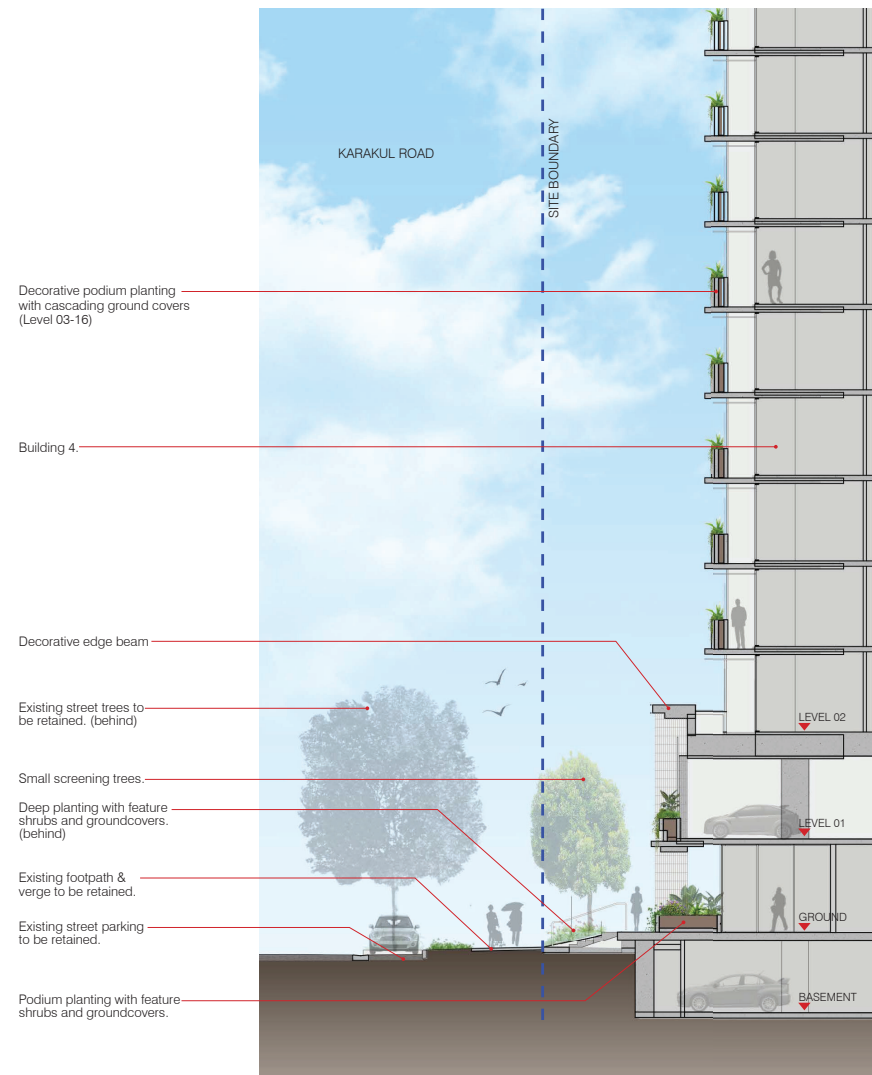
- PUBLIC MOVEMENT
- COMMUNAL CIRCULATION (LVL2)
- COMMUNAL CONNECTIONS (LVL 2)
- PRIVATE CONNECTIONS (GROUND)
- MAIN SITE ENTRANCES (GROUND)
- CASUAL SURVEILLANCE
- 18m WIDE CROSS BLOCK LINK
- PLACES OF INTEREST







SECTION A  
1:100 @ A1

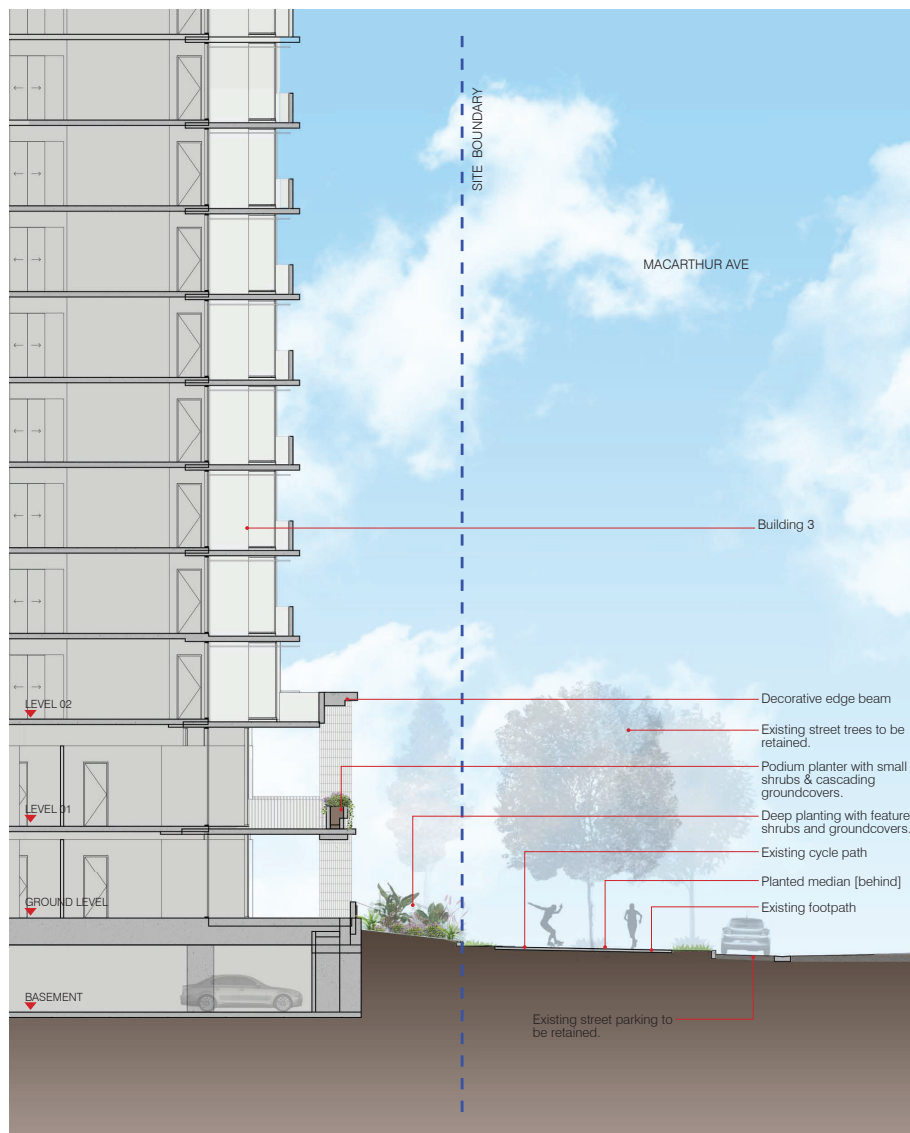


SECTION B  
1:100 @ A1

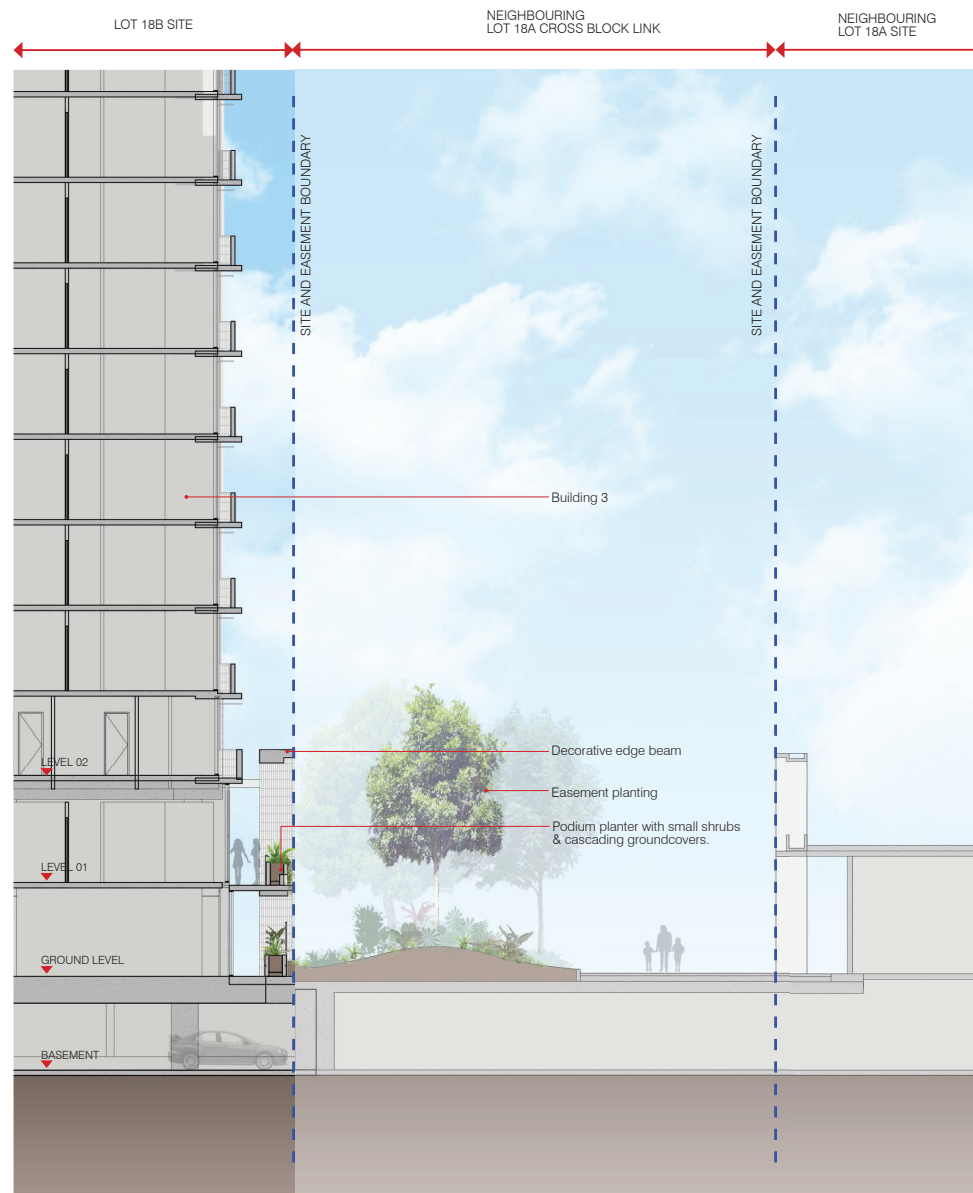
# LANDSCAPE SECTIONS

## SCHEMATIC DESIGN | LOT 18B HAMILTON





SECTION C  
1:100 @ A1








SECTION D  
1:100 @ A1

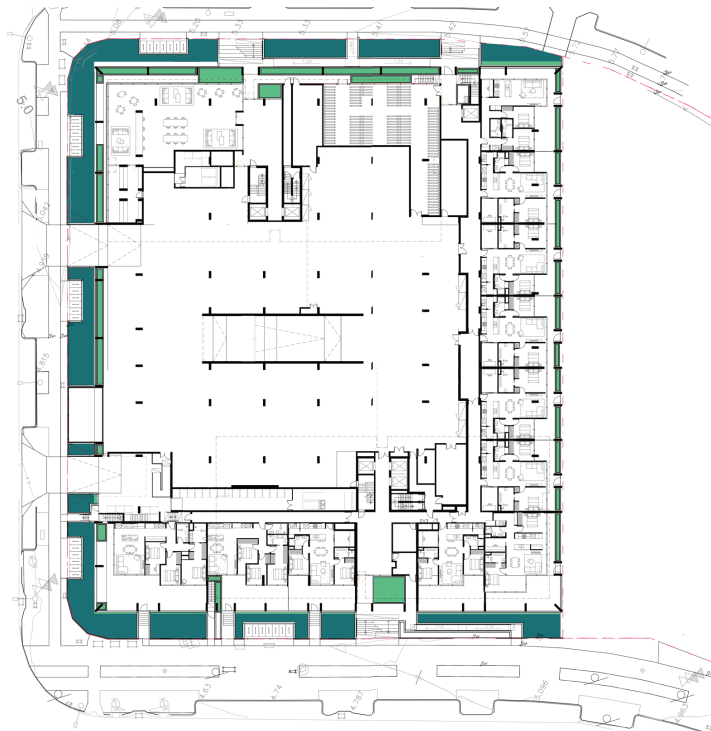
# LANDSCAPE SECTIONS

SCHEMATIC DESIGN | LOT 18B HAMILTON

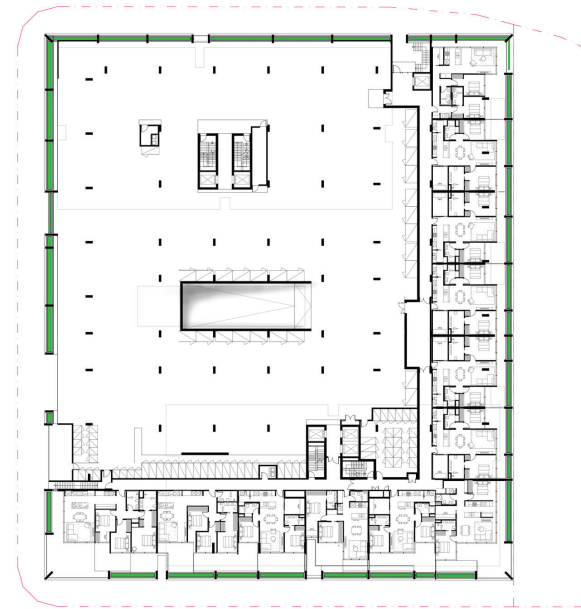


## PLANTER DEPTH KEY

	PODIUM PLANTER 200 to 400mm
	PODIUM PLANTER 450 to 600mm
	PODIUM PLANTER 600 to 900mm
	PODIUM PLANTER 1000 to 1200mm
	DEEP PLANTING AREAS



PLANTER DEPTHS PLAN  
GROUND LEVEL



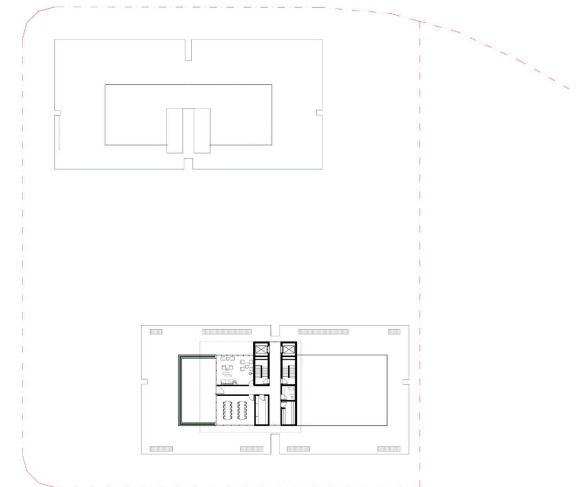
PLANTER DEPTHS PLAN  
LEVEL 01



PLANTER DEPTHS PLAN  
LEVEL 02



PLANTER DEPTHS PLAN  
LEVELS 03-16



PLANTER DEPTHS PLAN  
ROOF TERRACE

# LANDSCAPE DETAILS - SOIL DEPTHS

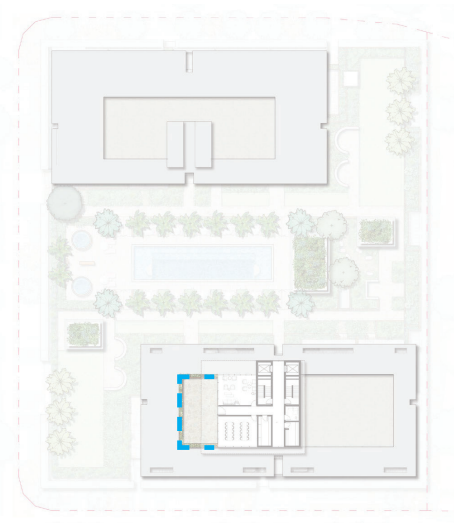
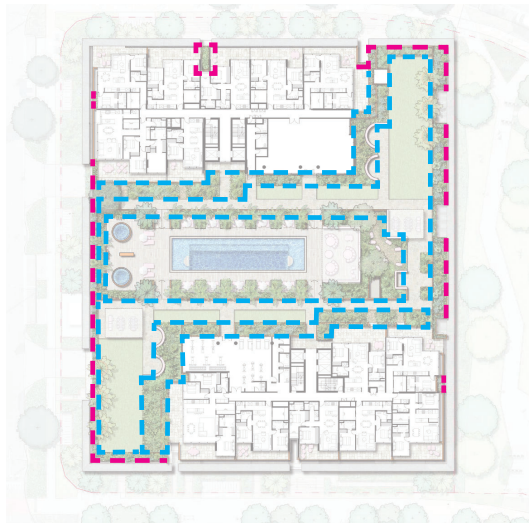
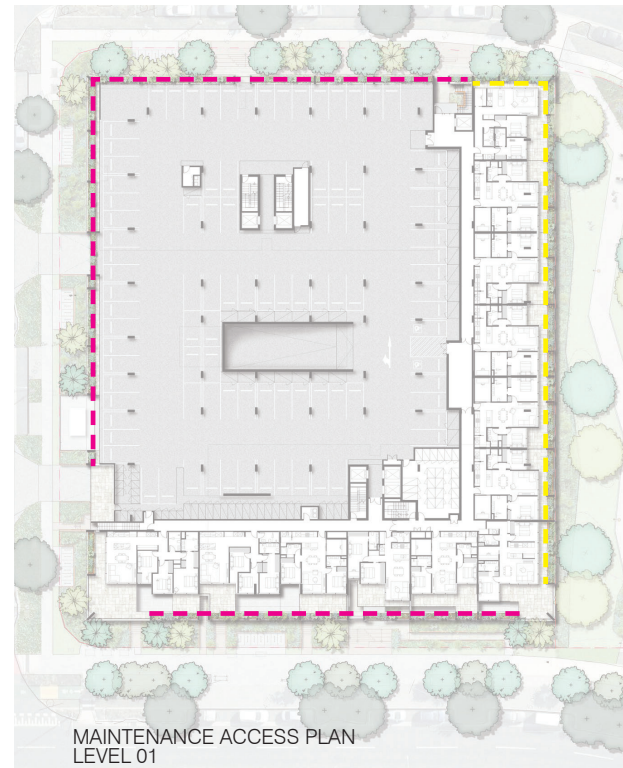
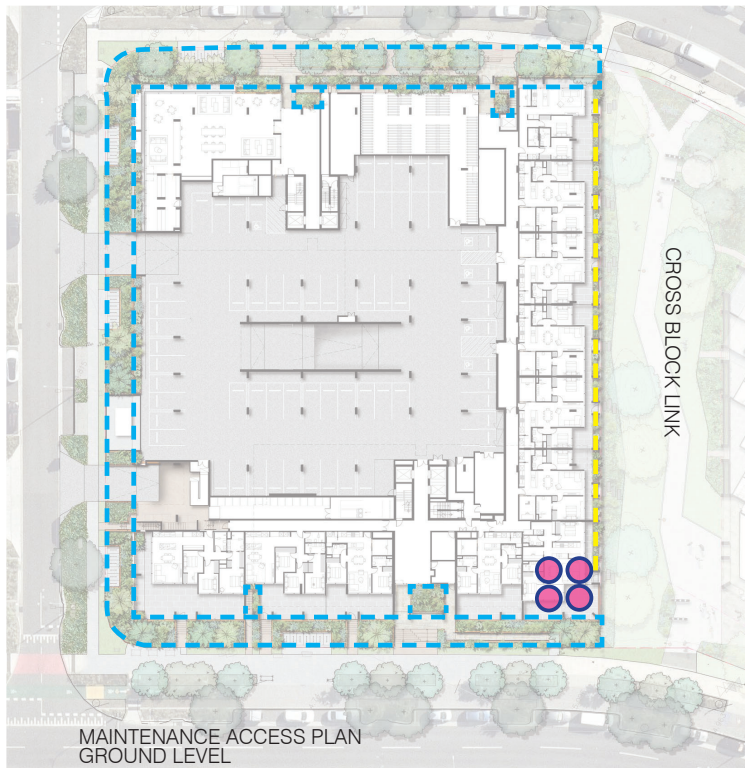
SCHEMATIC DESIGN | LOT 18B HAMILTON



**DUNN MORAN**  
LANDSCAPE ARCHITECTS

2404601 SD-012  
2025-03-12 ISSUE D  
Copyright by Dunn + Moran Landscape Architects Pty Ltd. This drawing or parts thereof may not be reproduced for any purpose without the consent of Dunn + Moran Landscape Architects.





## PLANTER MAINTENANCE

- On Grade planter access + maintenance
- Balcony planter accessed via adjacent balcony "On Grade"
- Access planter at level with horizontal cable/harness safety system

### ACCESS NOTES :

- All garden beds noted as 'ON GRADE ACCESS' to be maintained from adjacent 'on grade' pathways, terraces and garden beds within safely reached areas.
- All garden beds maintained 'off grade' will be maintained from appropriate anchor connections, safely accessed from on grade areas or abseil system.
- All balcony plants in units will be maintained by Body Corporate with access through private units.

### MAINTENANCE NOTES :

- Maintenance to all planters shown on plans are to be managed through Body Corporate controls.
- Garden maintenance schedule is to be arranged between Body Corporate and the Garden Maintenance Team to ensure gardens are kept to required standards.
- Maintenance schedule may include these tasks:
  - Debris and litter control
  - Weeding
  - Plant pruning
  - Plant replacement
  - Vine leader training and trellis inspection
  - Pest and disease inspection
  - Fertilising
  - Mulch inspection and topping up
  - Soil level control
  - Soil testing
  - Irrigation inspection and testing

## IRRIGATION DESIGN

- Approximate location of Irrigation Tanks Below [Located in corner of basement under Tanks to be 4 x 22,500L Poly Tanks = 90kL storage

### IRRIGATION NOTES :

- GENERAL: Design, supply and install a fully automatic irrigation system to all podium planters. The expected operable life of the system and it's fittings is a minimum of 10 years.
- APPROVALS: All necessary plumbing approvals shall be achieved prior to commencement of Irrigation works.
- RPZ: Assembly is to be provided at designated location and contractor shall be responsible for seeking all necessary local authority approvals.
- VALVES + VALVE BOXES: All solenoid and isolating valves are to be housed in trafficable valve boxes. If valve boxes are located in pavement, infill lids shall be supplied and installed with pavement to match adjacent. Valve boxes located in planting areas shall have a minimum of 200mm deep compacted clean/washed gravel at base. Valve boxes located in pavement shall have a flush finish, trip hazards are unacceptable.
- SOURCE: Source shall be harvested rainwater stored in nominated rainwater tank suitable to store up to four weeks of irrigation at a minimum.

### IRRIGATION CALCULATIONS :

LANDSCAPE podium AREA TOTAL: 2236m<sup>2</sup>  
(GROUND LEVEL: 660m<sup>2</sup> [Podium 144m<sup>2</sup> + deep planting 516m<sup>2</sup>] + LEVEL 01: 123m<sup>2</sup> + LEVEL 02: 1435m<sup>2</sup> [945 planting + 490 turf] + LEVEL 03-16: 12m<sup>2</sup> + ROOFTOP: 6m<sup>2</sup>)

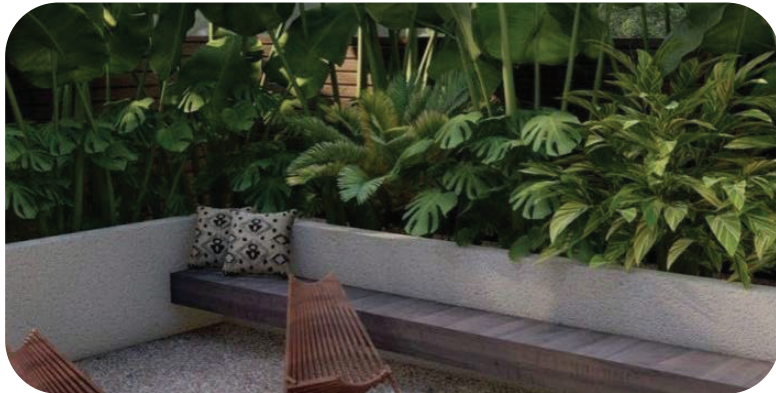
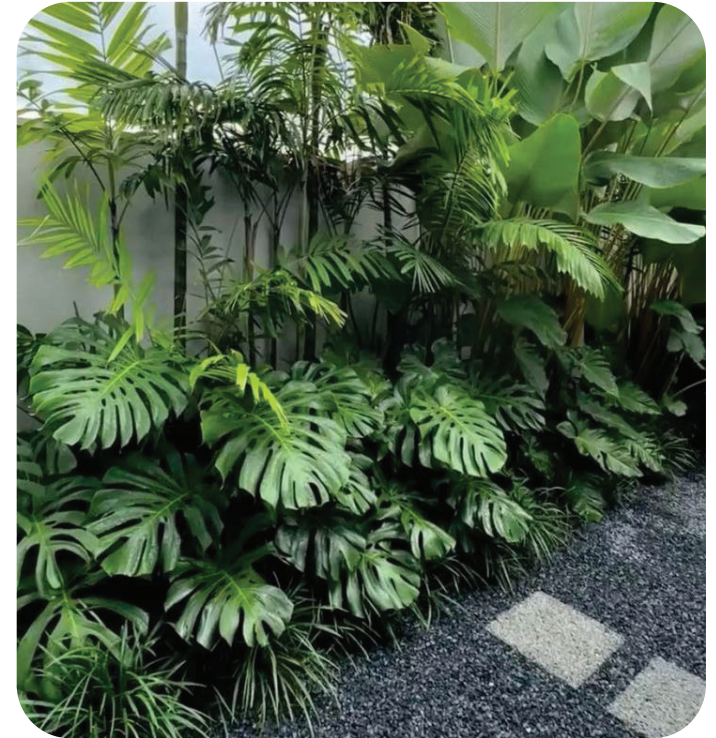
2236 x 0.75 = 1677  
1677 x 0.025 = 42kL  
42 x 2 weeks = 84kL TANK

# PLANTER MAINTENANCE PLAN

SCHEMATIC DESIGN | LOT 18B HAMILTON







# INDICATIVE LANDSCAPE CHARACTER

SCHEMATIC DESIGN | LOT 18B HAMILTON



# Roof Terrace, Colour Palette



Timber roof & batten panelling



Natural look stone wall



Overhead planters



Lighting



Travertine floor tile



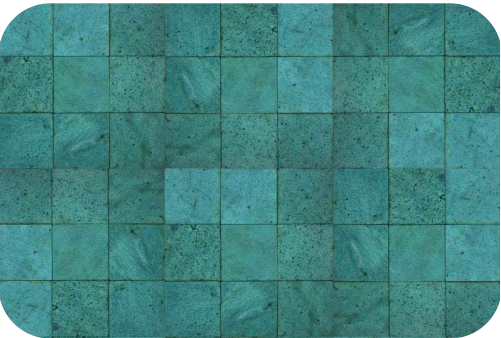
Sandstone sitting elements [Cross Block Link]



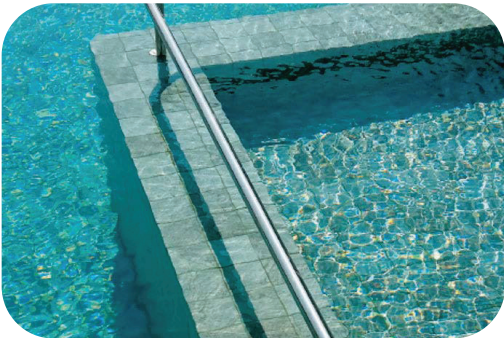
Travertine floor tile



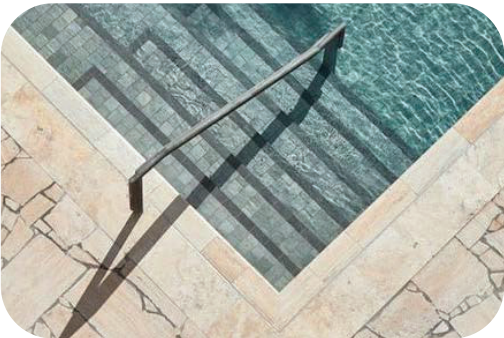
Freeform stone floor tile



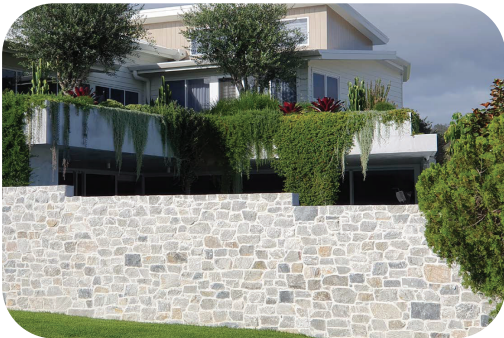
Pool tile



Pool tile



Pool coping tile



Walling





ACMENA hemilampra



ATRACTOCARPUS fitzalanii



LIVISTONA australis



ELAEOCARPUS eumundii



CRASSULA ovata

## INTERNAL SITE PLANTING

### TREES

SPECIES  
ATRACTOCARPUS fitzalanii  
ELAEOCARPUS eumundii  
LIVISTONA australis

COMMON NAME  
Native Gardenia  
Smooth Quandong  
Cabbage Palm

### SHRUBS

SPECIES  
CASUARINA glauca 'Greenwave'  
CRASSULA ovata  
KALANCHOE 'Silver Spoons'  
RHIPSALIS teres f. heteroclada  
WESTRINGIA fruticosa 'Jervis Gem'

COMMON NAME  
Green Wave  
Jade plant  
Silver Spoons  
Mistletoe Cactus  
Jervis Gem

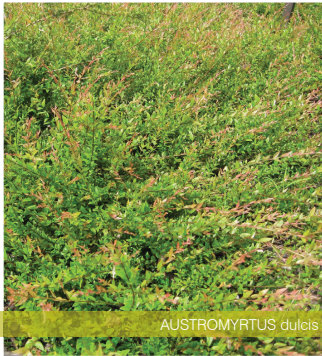
### GROUNDCOVERS

SPECIES  
APTENIA cordifolia  
AUSTROMYRTUS dulcis  
CARPOBROTUS 'Aussie Rambler'  
DICHONDRA 'Emerald Falls'  
GOODENIA ovata  
JUNCUS usitatus  
MYOPORUM parvifolium  
VIOLA hederacea

COMMON NAME  
Heartleaf Ice Plant  
Midgen Berry  
Pig Face  
Emerald Falls  
Hop Goodenia  
Common Rush  
Creeping Boobialla  
Native Violet



WESTRINGIA Jervis Gem



AUSTROMYRTUS dulcis



GOODENIA ovata



MYOPORUM parvifolium



VIOLA hederacea