



CONTENTS

LOCATION PLAN	SD-02
LANDSCAPE PLAN - GROUND LEVEL	SD-03
LANDSCAPE PLAN - LEVEL 01	SD-04
LANDSCAPE PLAN - LEVELS 02 - 08	SD-05
LANDSCAPE PLAN - LEVELS 09 - 11	SD-06
LANDSCAPE PLAN - ROOFTOP	SD-07
LANDSCAPE ANALYSIS	SD-08
FIRST NATIONS	SD-09
LANDSCAPE SECTIONS	SD-10
LANDSCAPE SECTIONS	SD-11
LANDSCAPE SECTIONS	SD-12
LANDSCAPE SECTIONS	SD-13
LANDSCAPE DETAILS - SOIL DEPTHS	SD-14
PLANTER MAINTENANCE PLAN	SD-15
LANDSCAPE CHARACTER	SD-16
INDICATIVE MATERIALS PALETTE	SD-17
INDICATIVE PLANTING PALETTE	SD-18



PLANS AND DOCUMENTS
referred to in the PDA
DEVELOPMENT APPROVAL

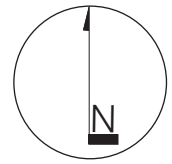
Approval no: DEV2024/1581

Date: 8 May 2025



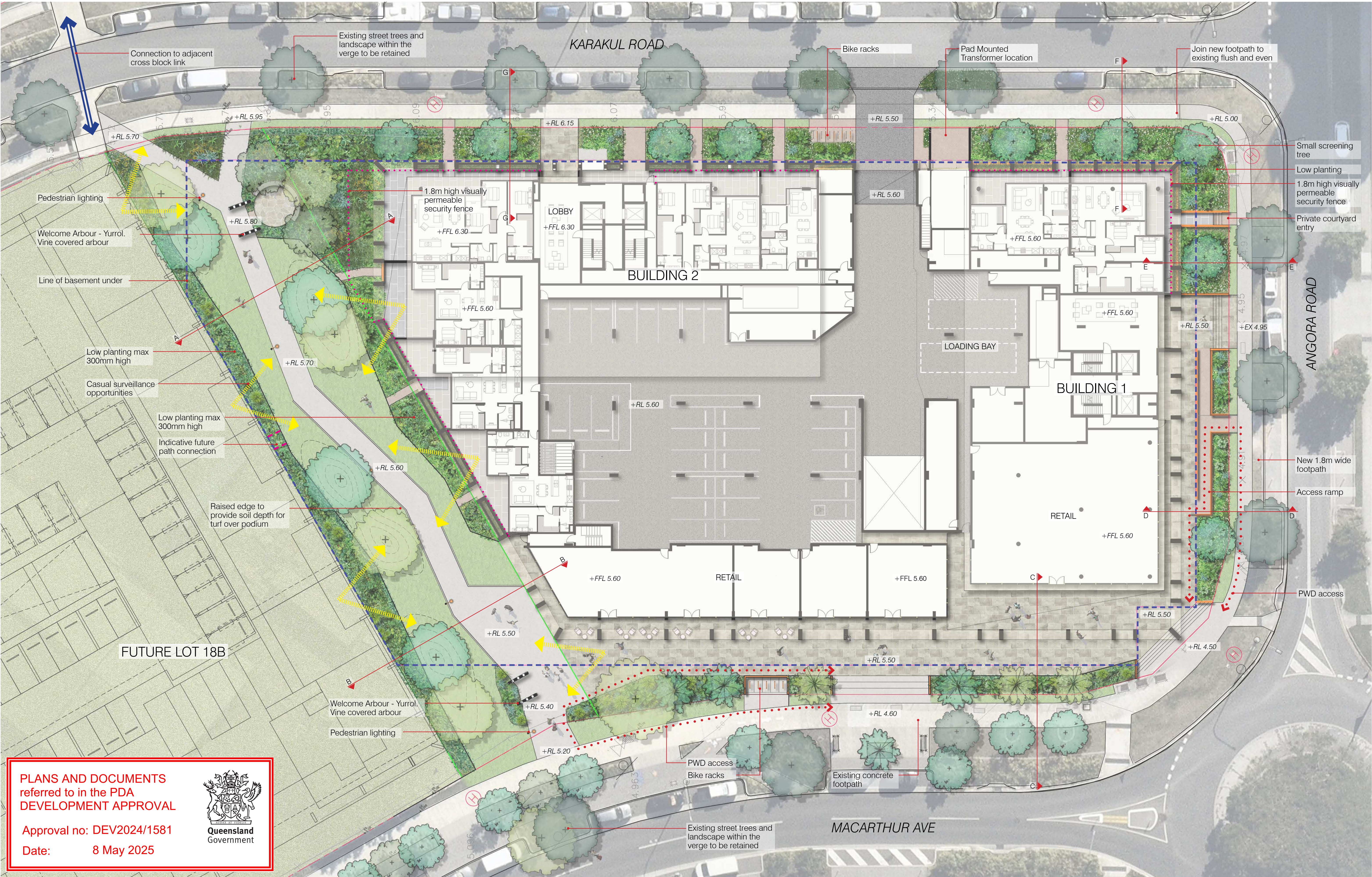
LOCATION PLAN

SCHEMATIC DESIGN | LOT 18A HAMILTON



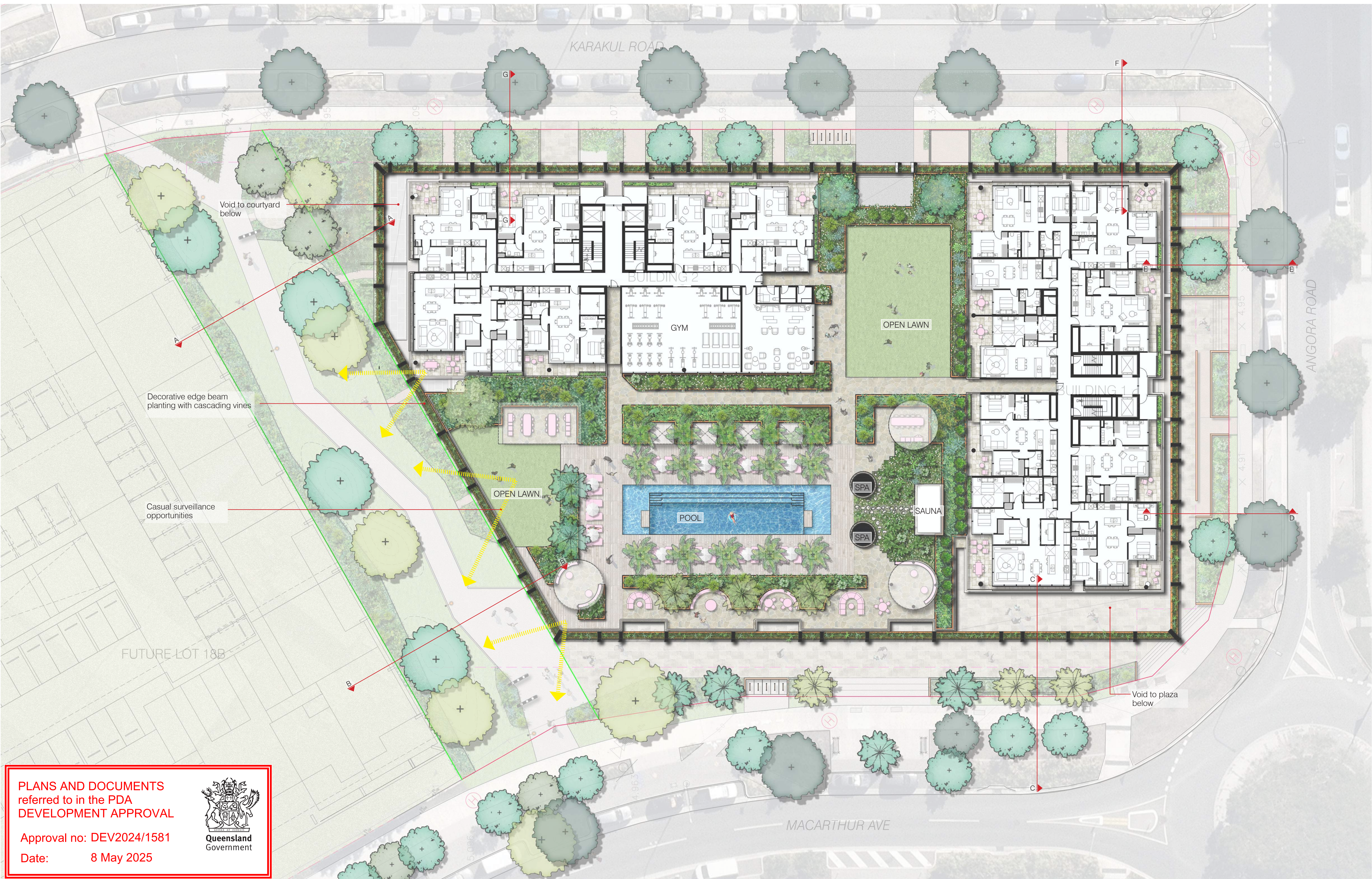
**DUNN
MORAN**
LANDSCAPE ARCHITECTS

2404600 SD-02
2025-03-12 ISSUE C
Copyright by Dunn + Moran Landscape
Architects Pty Ltd. This drawing or parts
there of may not be reproduced for any
purpose without the consent of Dunn +
Moran Landscape Architects.



LANDSCAPE PLAN - GROUND LEVEL

SCHEMATIC DESIGN | LOT 18A HAMILTON



PLANS AND DOCUMENTS
referred to in the PDA
DEVELOPMENT APPROVAL

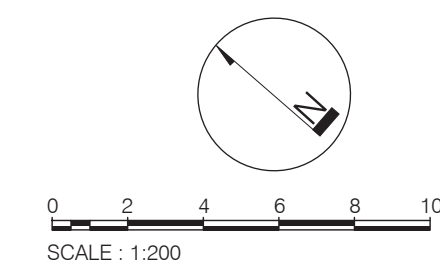
Approval no: DEV2024/1581

Date: 8 May 2025



LANDSCAPE PLAN - LEVEL 01

SCHEMATIC DESIGN | LOT 18A HAMILTON

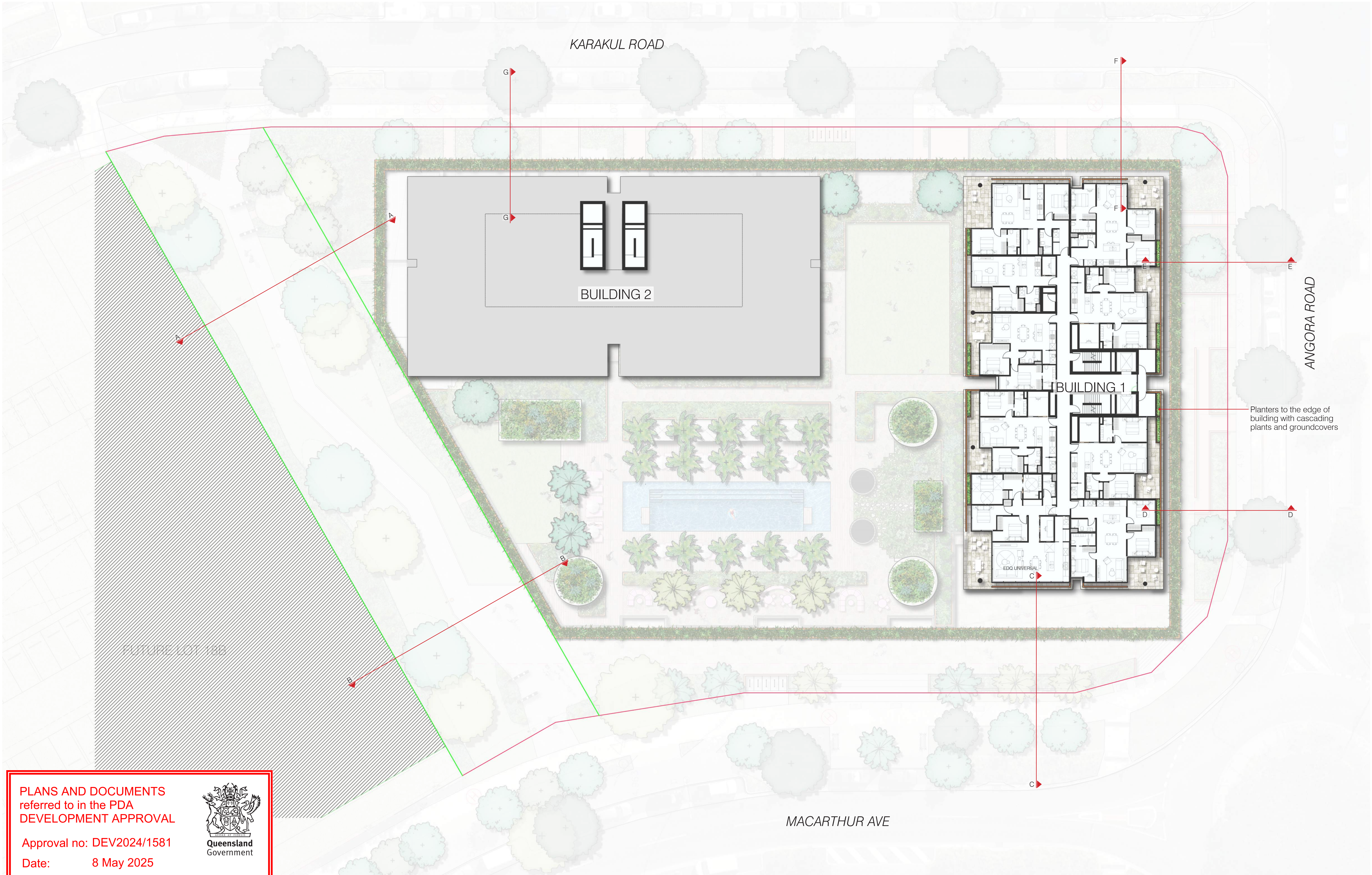


2404600 SD-04
2025-03-12 ISSUE C
Copyright by Dunn + Moran Landscape
Architects Pty Ltd. This drawing or parts
thereof may not be reproduced for any
purpose without the consent of Dunn +
Moran Landscape Architects.



LANDSCAPE PLAN - LEVELS 02 - 08

SCHEMATIC DESIGN | LOT 18A HAMILTON



PLANS AND DOCUMENTS
referred to in the PDA
DEVELOPMENT APPROVAL

Approval no: DEV2024/1581

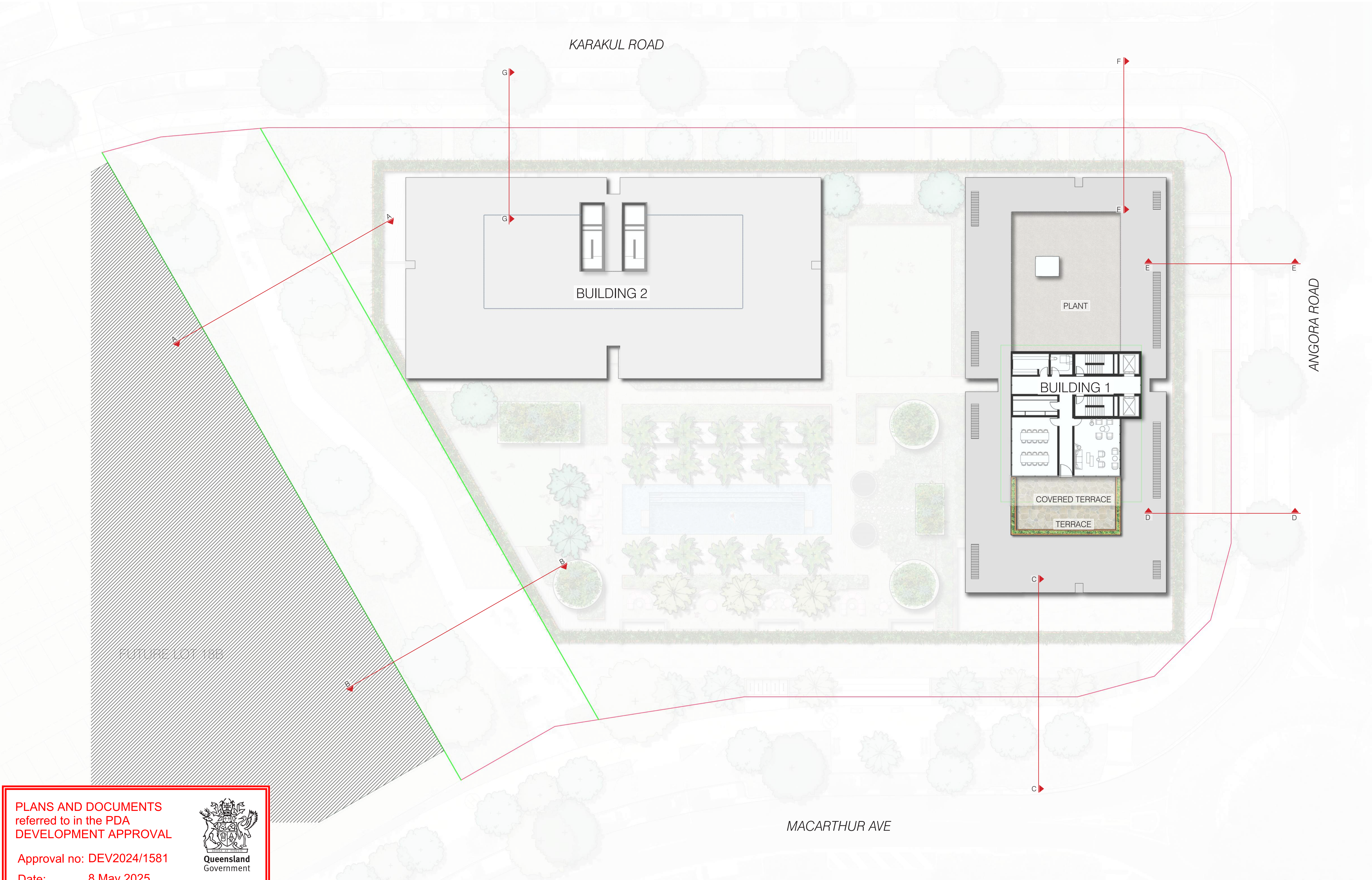
Date: 8 May 2025



Queensland
Government

LANDSCAPE PLAN - LEVELS 09 - 11

SCHEMATIC DESIGN | LOT 18A HAMILTON



PLANS AND DOCUMENTS
referred to in the PDA
DEVELOPMENT APPROVAL

Approval no: DEV2024/1581

Date: 8 May 2025



LANDSCAPE PLAN - ROOF TERRACE

SCHEMATIC DESIGN | LOT 18A HAMILTON

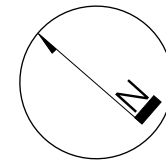


ANALYSIS KEY

- PUBLIC MOVEMENT
- COMMUNAL CIRCULATION (LVL1)
- COMMUNAL CONNECTIONS (LVL 1)
- PRIVATE CONNECTIONS (GROUND)
- MAIN SITE ENTRANCES (GROUND)
- CASUAL SURVEILLANCE
- 18m WIDE CROSS BLOCK LINK
- PLACES OF INTEREST

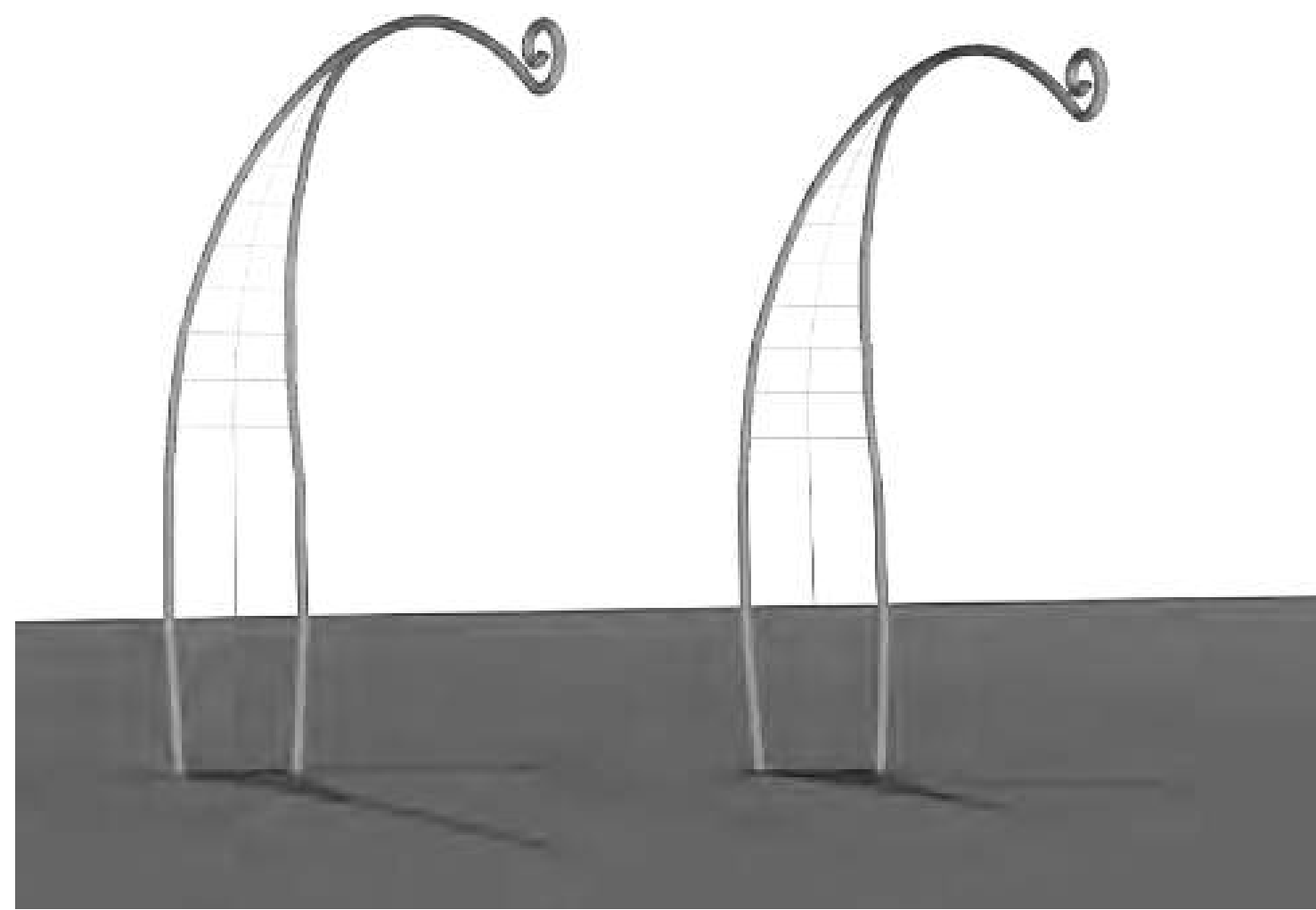
LANDSCAPE ANALYSIS

SCHEMATIC DESIGN | LOT 18A HAMILTON





Yurrol Vine (*Flagellaria indica*)



Yurrol arbors
- 2 x freestanding formed steel tube expressing the Yurrol vine leaf shape
- Provides support for the Yurrol (*Flagellaria indica*)

Song Grove with 3 x endemic
feature tree species

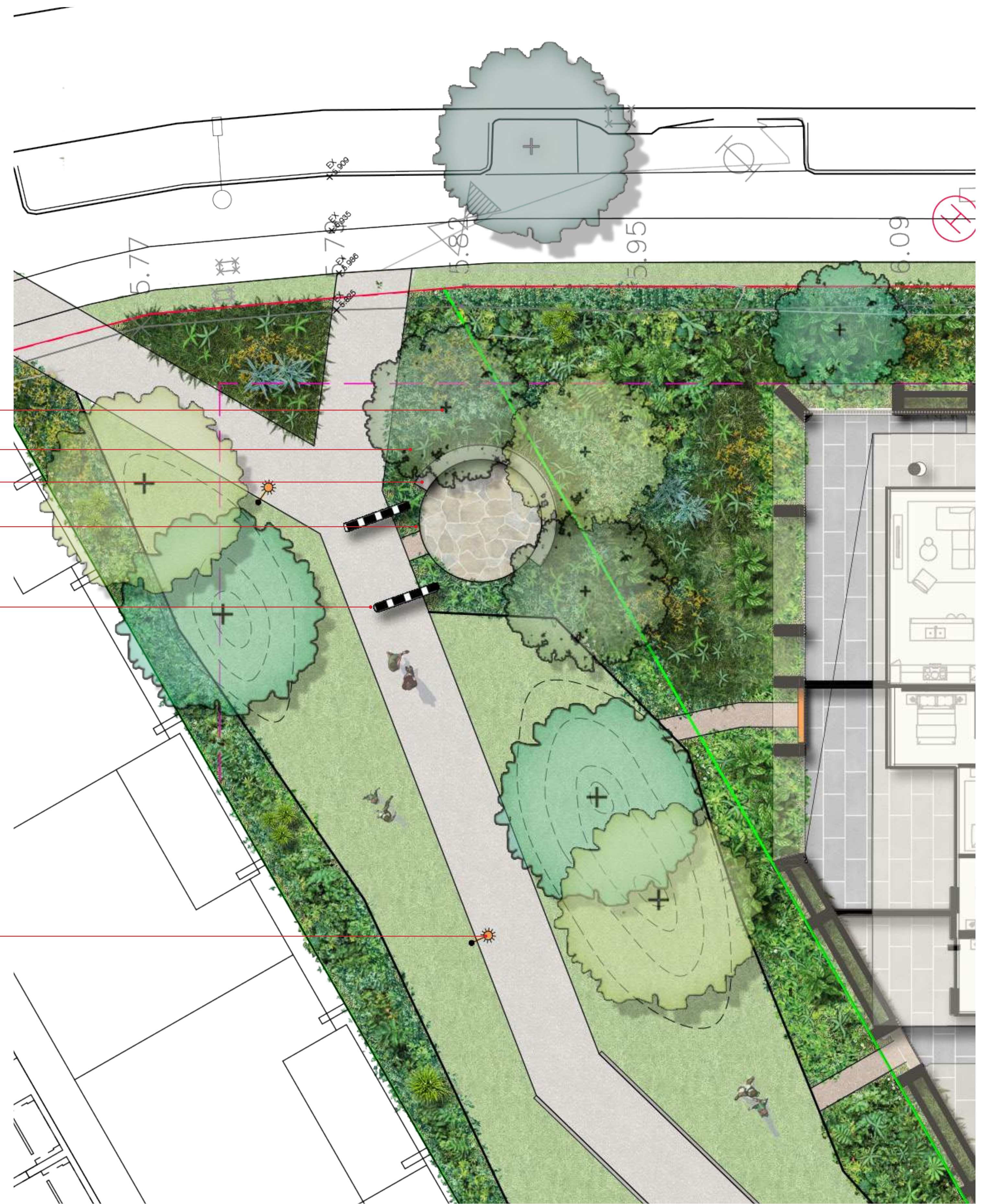
Low native groundcover planting

Sandstone block terraced
seating wall

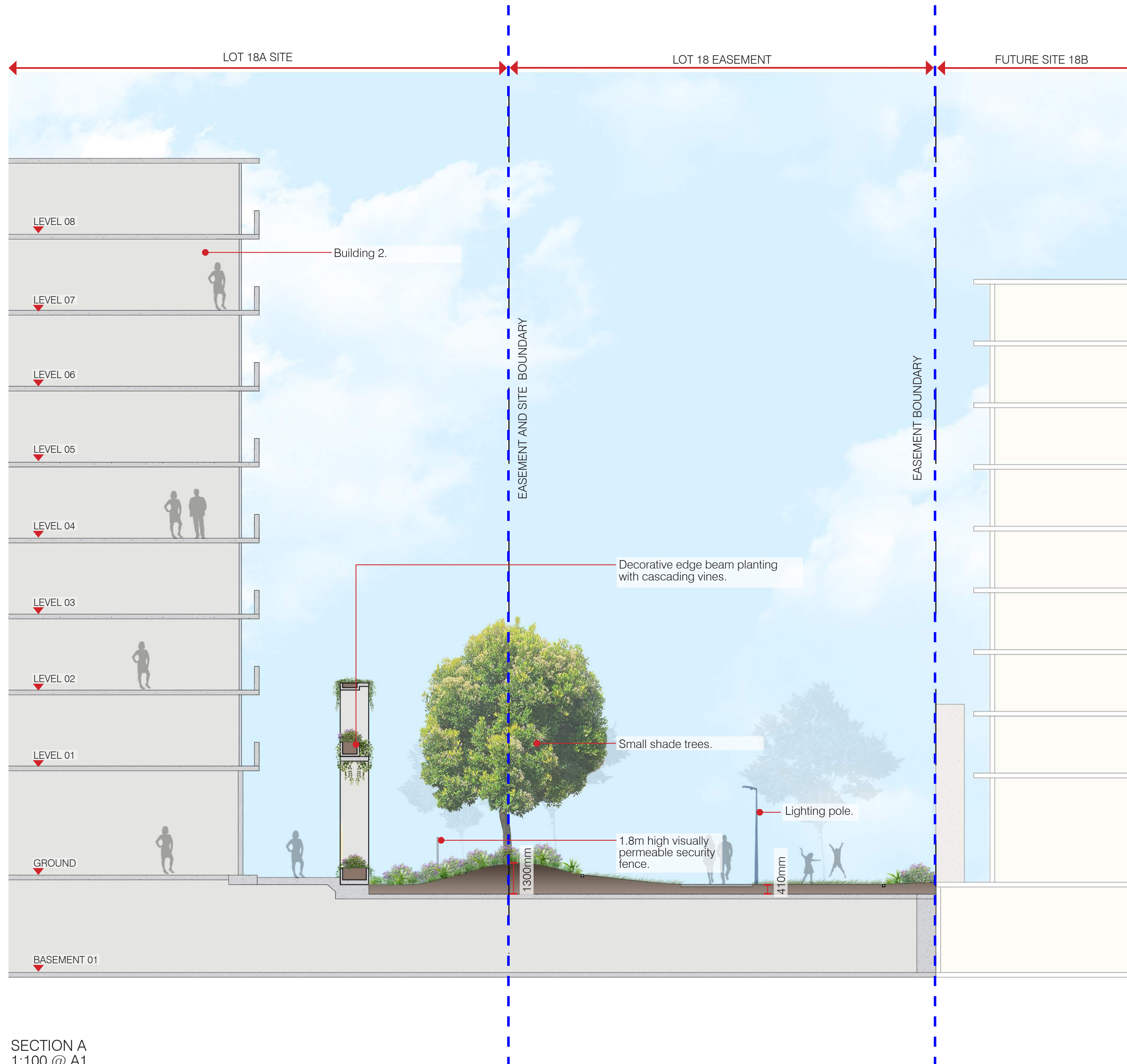
Interpretive sign location with
digital link to indigenous song

Yurrol vine arbours

Pedestrian lighting



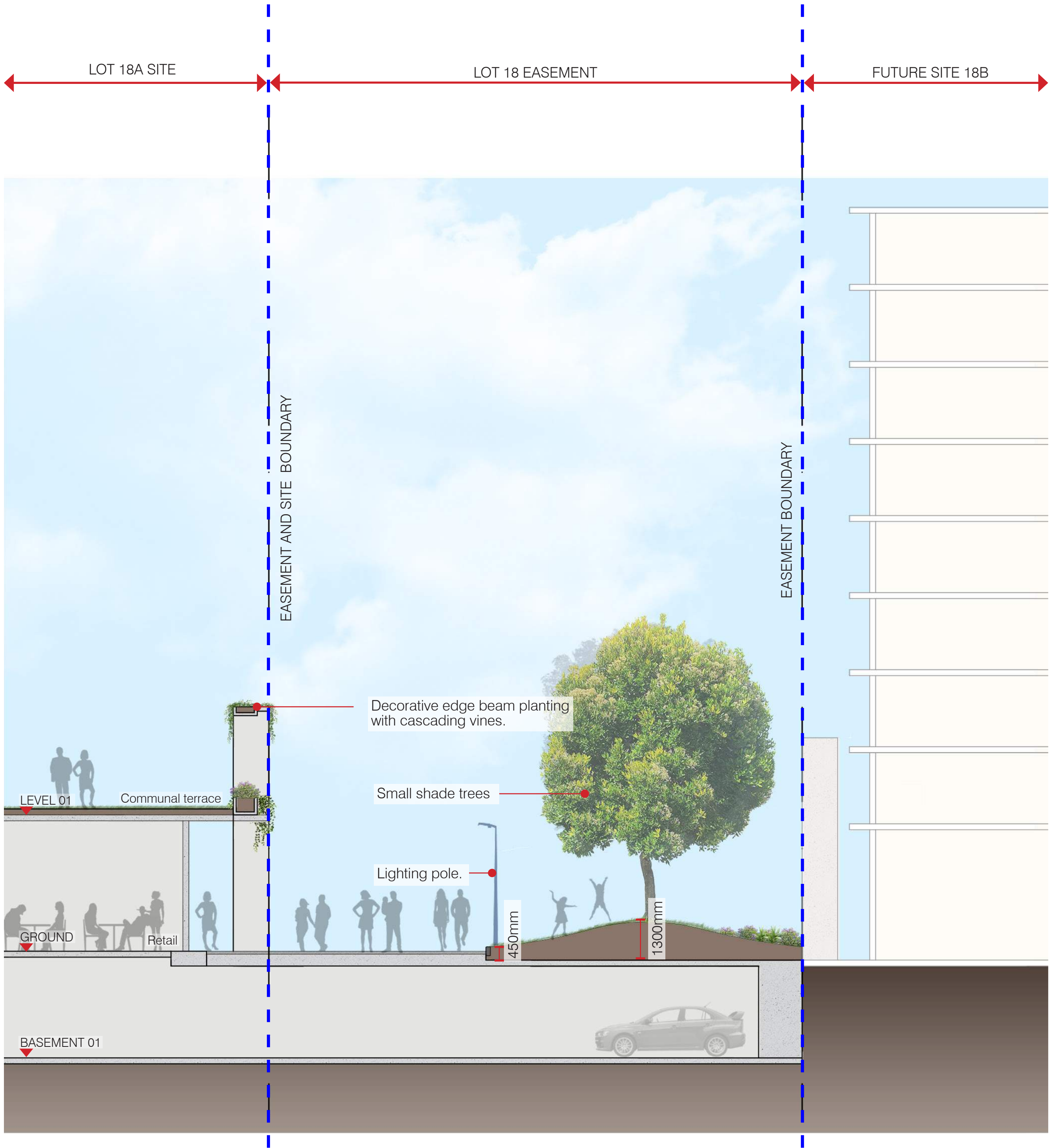
N.T.S



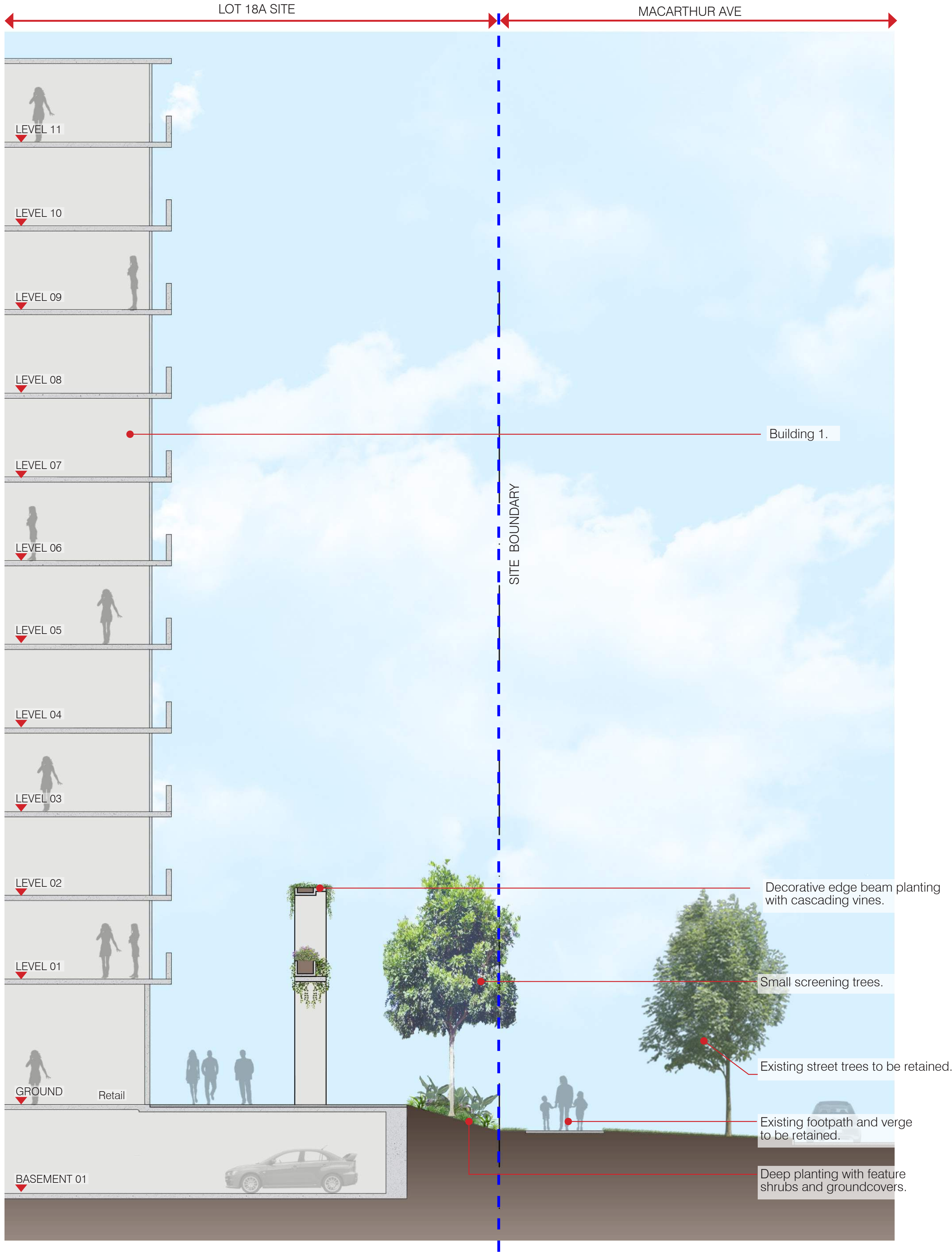
SECTION A
1:100 @ A1

LANDSCAPE SECTIONS

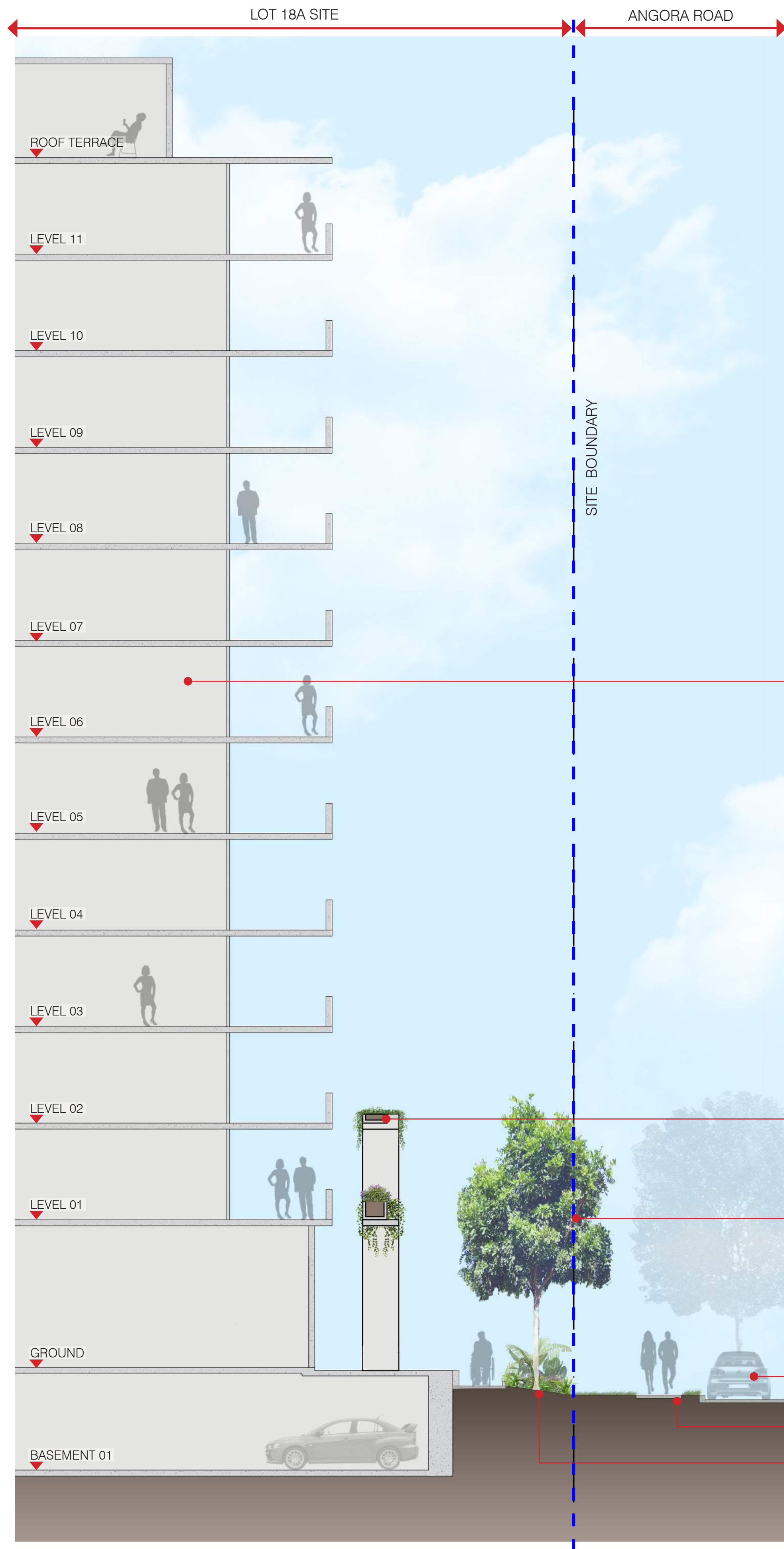
SCHEMATIC DESIGN | LOT 18A HAMILTON



SECTION B
1:100 @ A1



SECTION C
1:100 @ A1

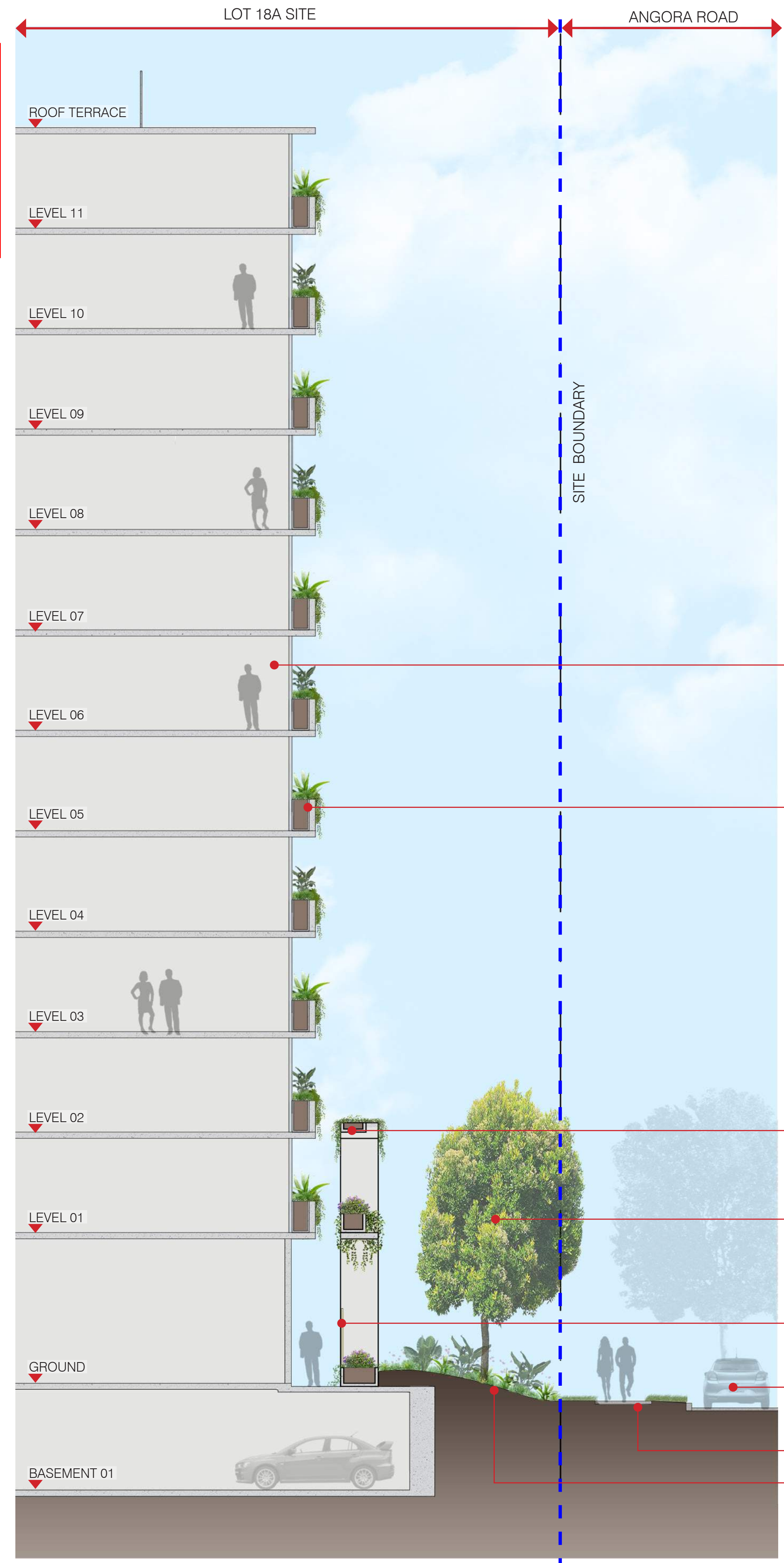


SECTION D
1:100 @ A1

PLANS AND DOCUMENTS
referred to in the PDA
DEVELOPMENT APPROVAL

Approval no: DEV2024/1581

Date: 8 May 2025



SECTION E
1:100 @ A1


LANDSCAPE SECTIONS

SCHEMATIC DESIGN | LOT 18A HAMILTON

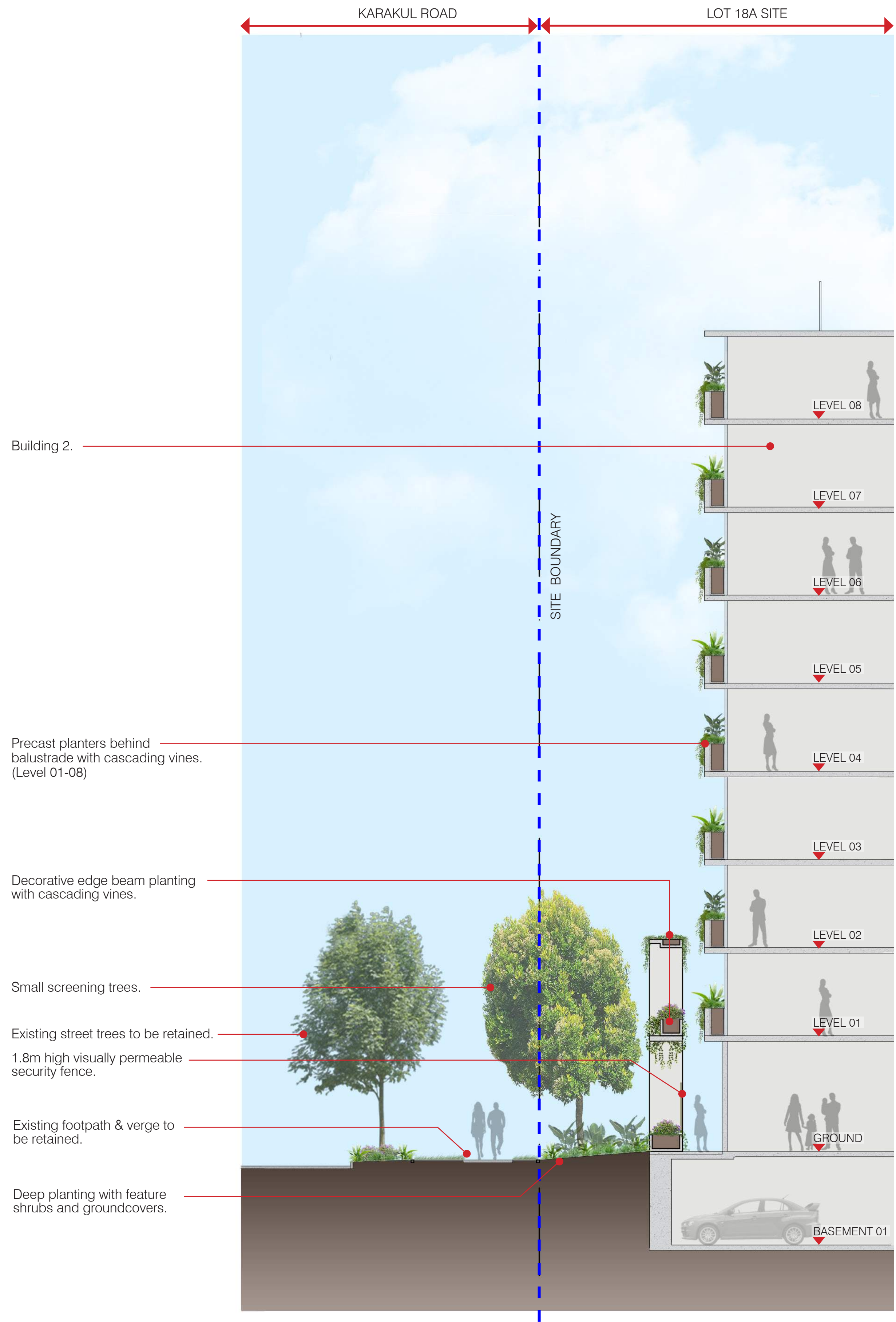
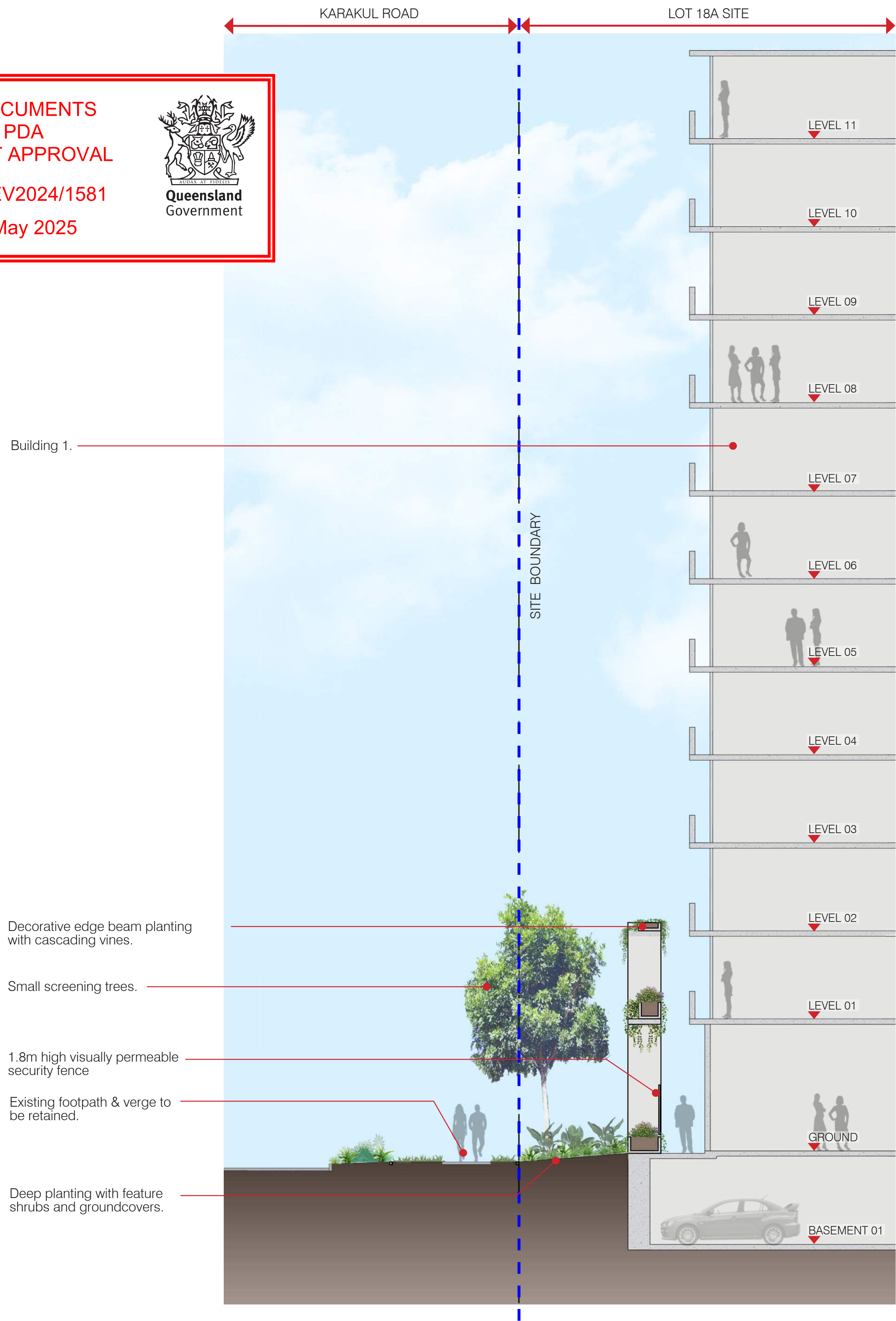
PLANS AND DOCUMENTS
referred to in the PDA
DEVELOPMENT APPROVAL

Approval no: DEV2024/1581

Date: 8 May 2025



Queensland
Government






PLANTER DEPTHS PLAN
GROUND LEVEL

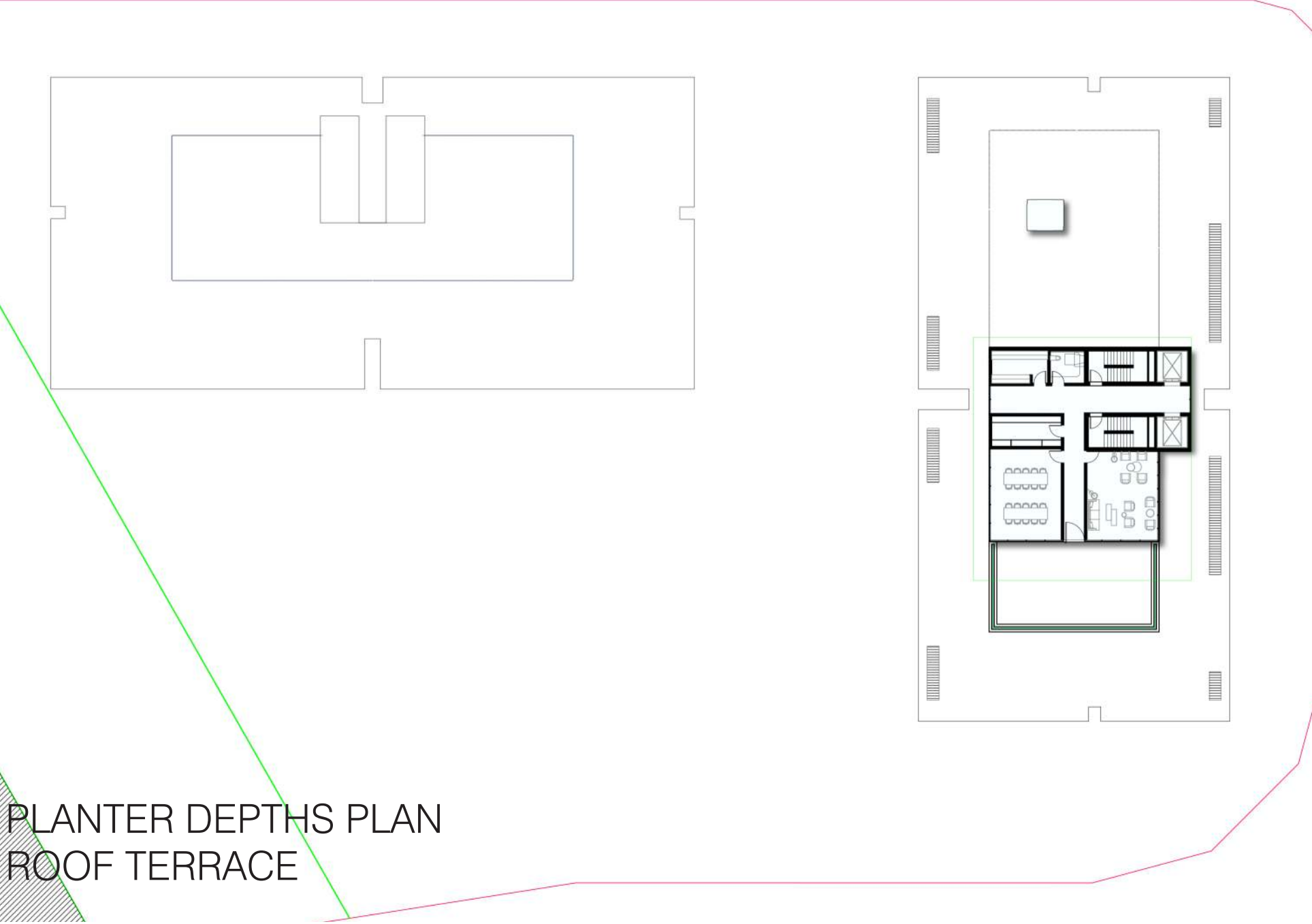
PLANS AND DOCUMENTS
referred to in the PDA
DEVELOPMENT APPROVAL

Approval no: DEV2024/1581
Date: 8 May 2025

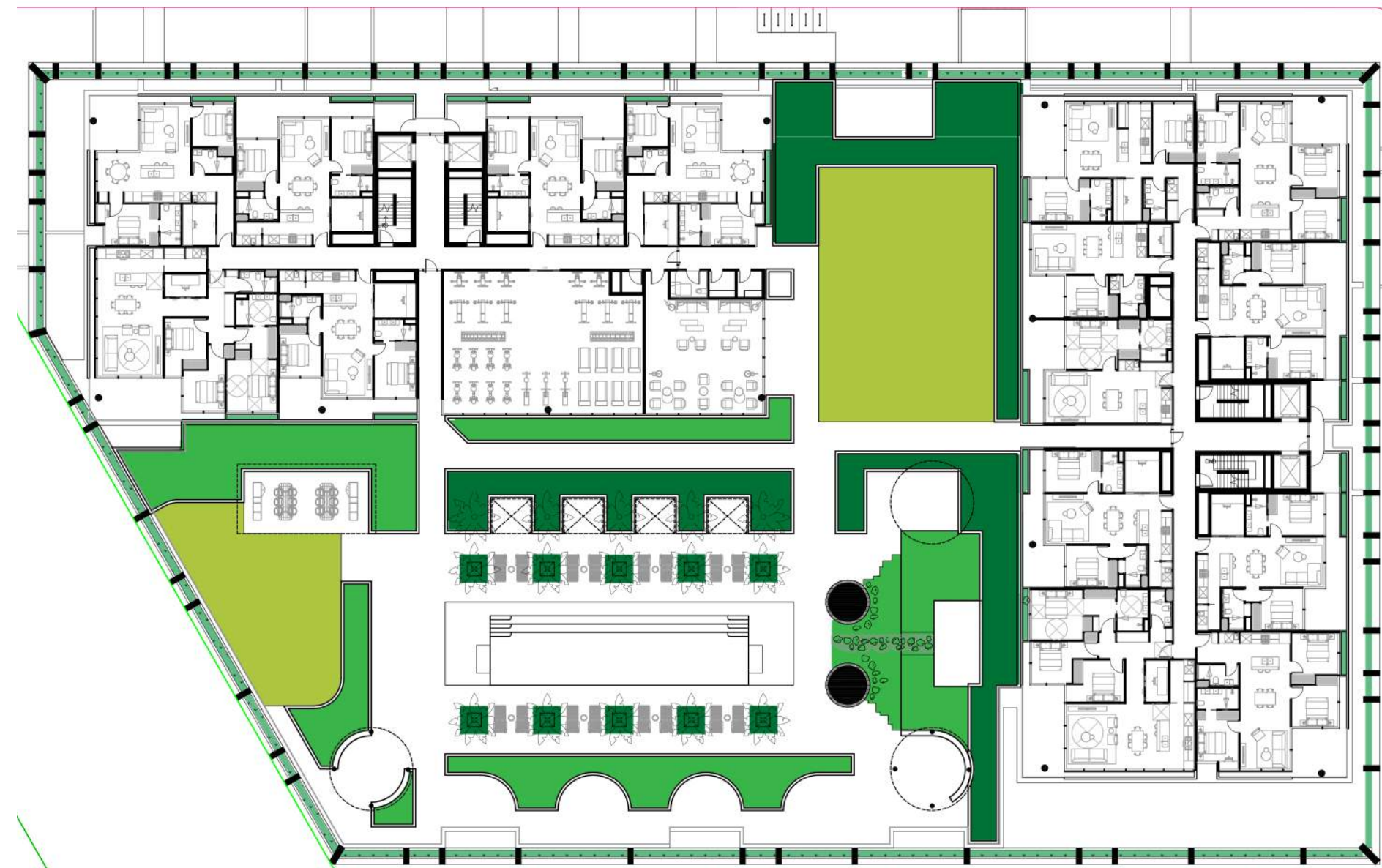


Queensland
Government

- PLANTER DEPTH KEY
- PODIUM PLANTER 400- 450mm
 - PODIUM PLANTER 450 to 600mm
 - PODIUM PLANTER 600 to 900mm
 - PODIUM PLANTER 1000 to 1300mm
 - DEEP PLANTING AREAS



PLANTER DEPTHS PLAN
ROOF TERRACE



PLANTER DEPTHS PLAN
LEVEL 01



PLANTER DEPTHS PLAN
LEVELS 02 - 08



PLANTER DEPTHS PLAN
LEVELS 09 - 11

PLANTER MAINTENANCE

- On Grade planter access + maintenance
- Balcony planter accessed via adjacent balcony "On Grade"
- Access planter at level with horizontal cable/harness safety system

- ACCESS NOTES :
- All garden beds noted as 'ON GRADE ACCESS' to be maintained from adjacent 'on grade' pathways, terraces and garden beds within safely reached areas.
 - All garden beds maintained 'off grade' will be maintained from appropriate anchor connections, safely accessed from on grade areas or abseil system.
 - All balcony plants in units will be maintained by Body Corporate with access through private units.

- MAINTENANCE NOTES :
- Maintenance to all planters shown on plans are to be managed through Body Corporate controls.
 - Garden maintenance schedule is to be arranged between Body Corporate and the Garden Maintenance Team to ensure gardens are kept to required standards.
 - Maintenance schedule may include these tasks:
 - Debris and litter control
 - Weeding
 - Plant pruning
 - Plant replacement
 - Vine leader training and trellis inspection
 - Pest and disease inspection
 - Fertilising
 - Mulch inspection and topping up
 - Soil level control
 - Soil testing
 - Irrigation inspection and testing

IRRIGATION DESIGN

- Approximate location of Irrigation Tanks [Located in void area under L1]
Tank to be minimum 90kL storage

- IRRIGATION NOTES :
- GENERAL: Design, supply and install a fully automatic irrigation system to all podium planters. The expected operable life of the system and it's fittings is a minimum of 10 years.
 - APPROVALS: All necessary plumbing approvals shall be achieved prior to commencement of Irrigation works.
 - RPZ: Assembly is to be provided at designated location and contractor shall be responsible for seeking all necessary local authority approvals.
 - VALVES + VALVE BOXES: All solenoid and isolating valves are to be housed in trafficable valve boxes. If valve boxes are located in pavement, infill lids shall be supplied and installed with pavement to match adjacent. Valve boxes located in planting areas shall have a minimum of 200mm deep compacted clean/washed gravel at base. Valve boxes located in pavement shall have a flush finish, trip hazards are unacceptable.
 - SOURCE: Source shall be harvested rainwater stored in nominated rainwater tank suitable to store up to four weeks of irrigation at a minimum.

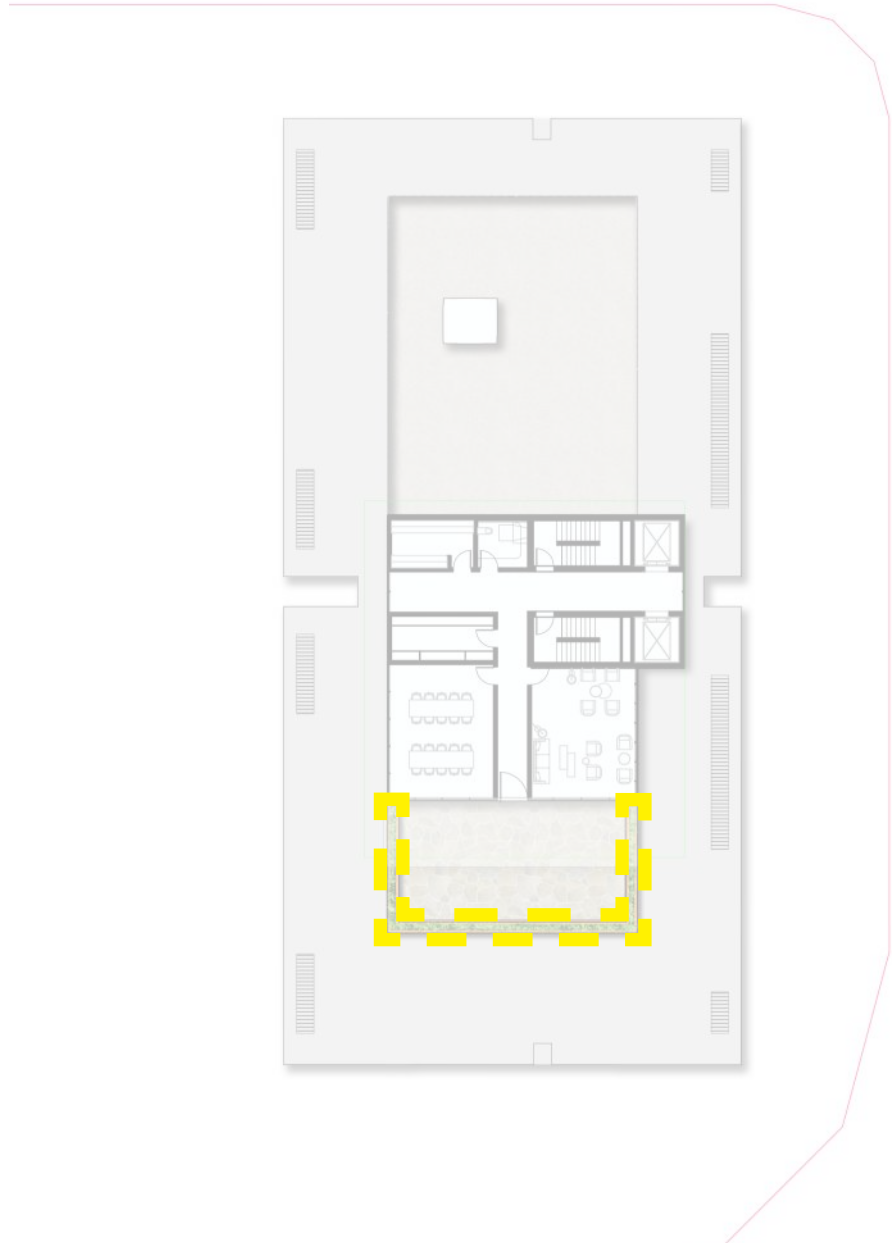
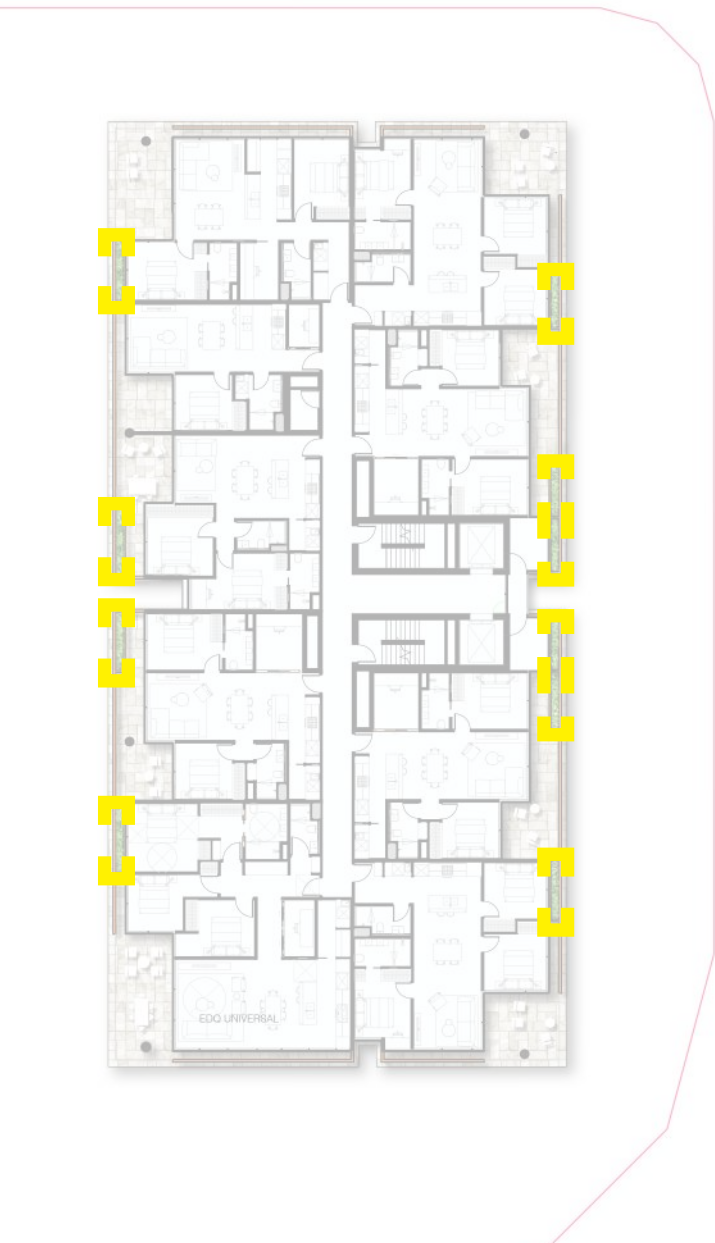
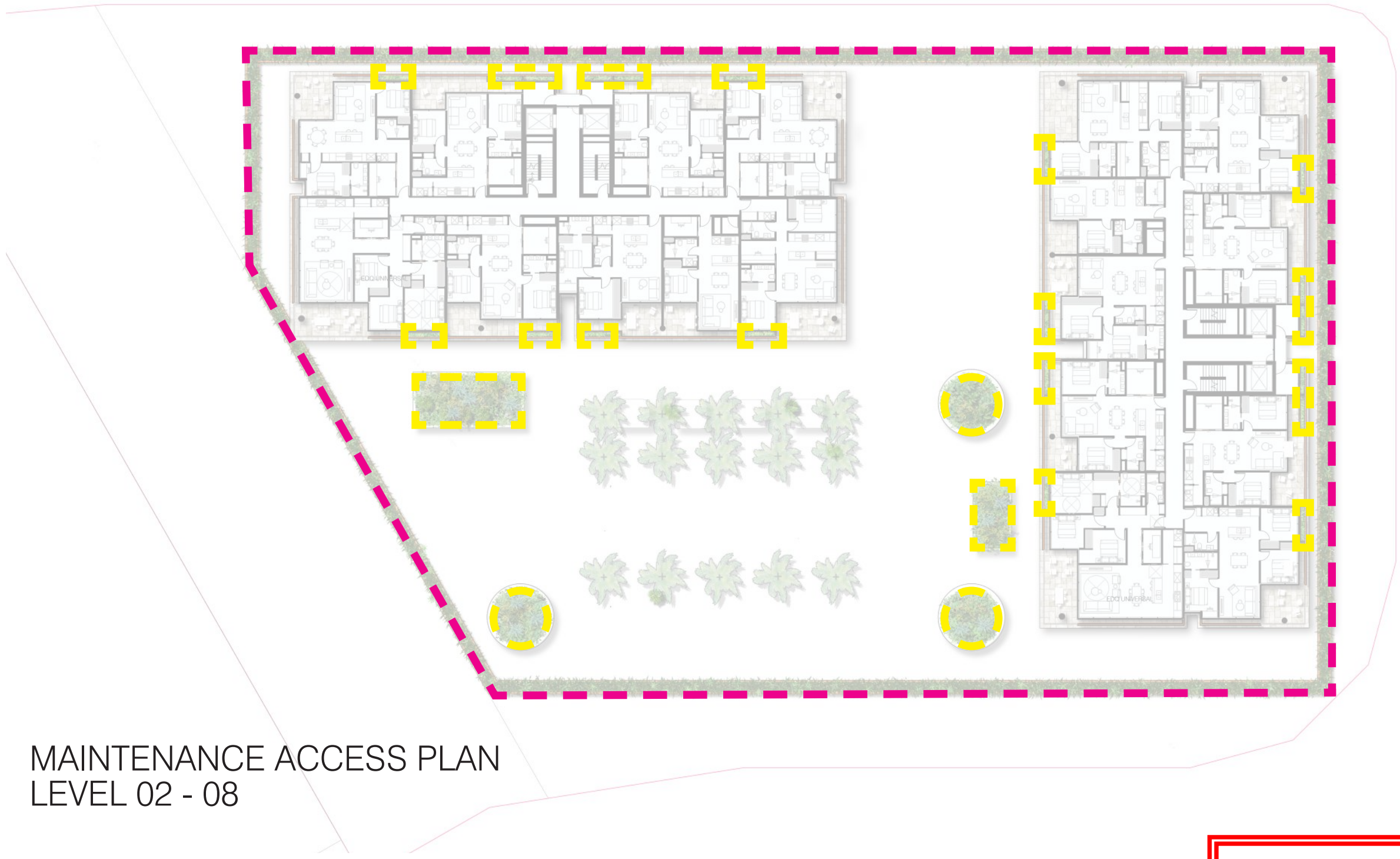
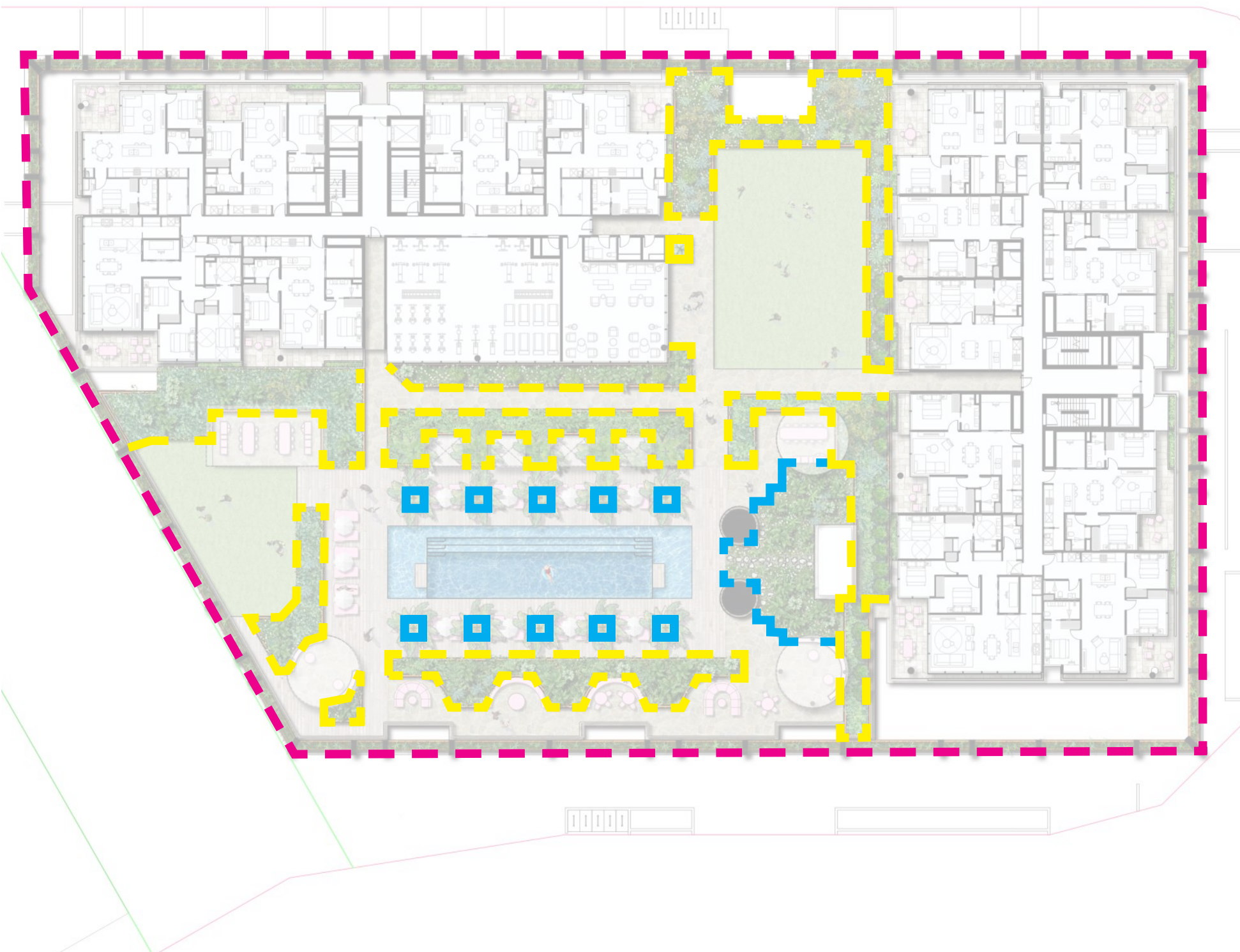
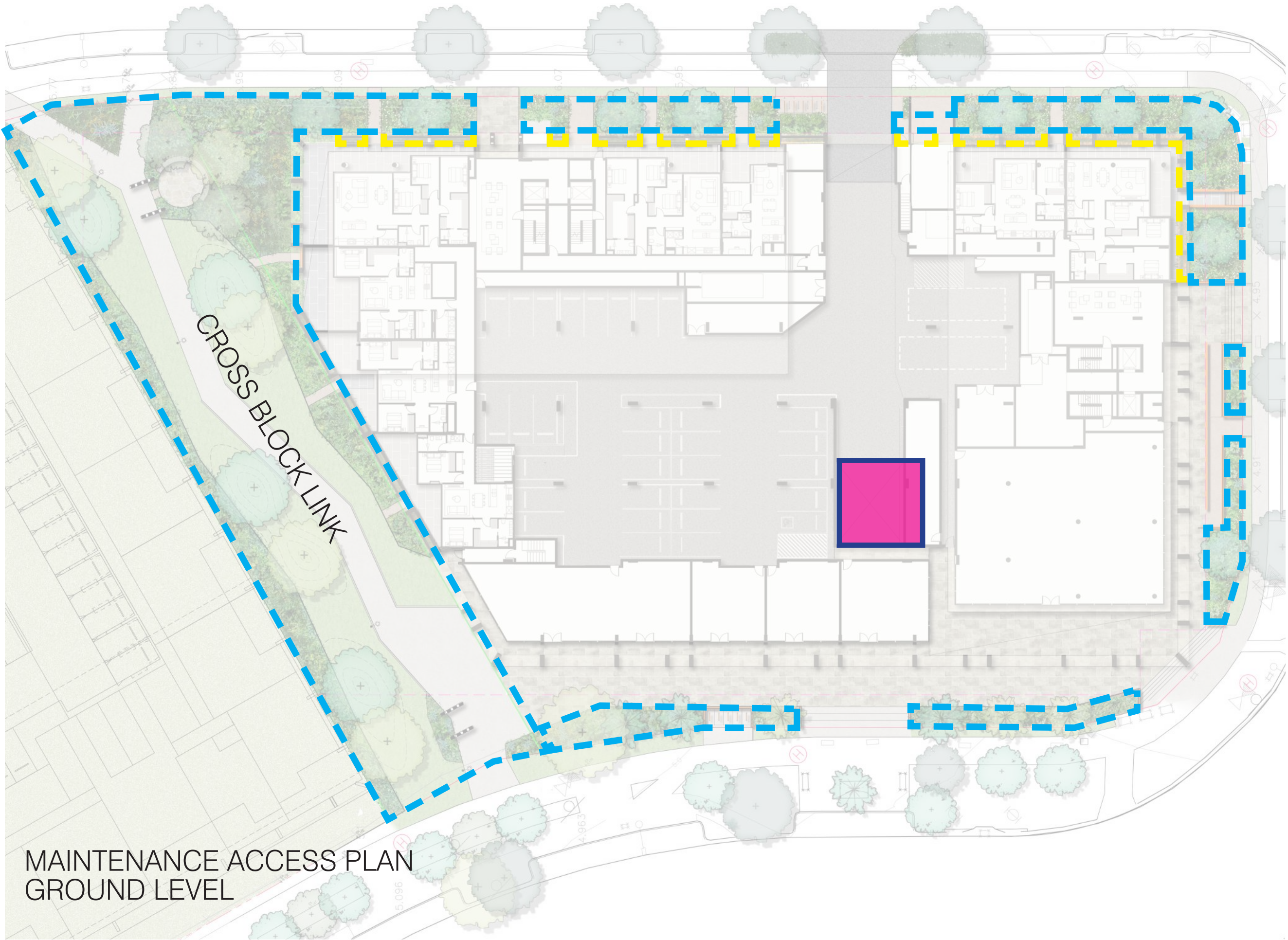
IRRIGATION CALCULATIONS :

LANDSCAPE podium AREA TOTAL: 2038m2
(GROUND LEVEL: 64m2 + LEVEL 01: [810 planting + 360 turf] = 1170m2 +
LEVEL 02-08 : 721m2 + LEVEL 09-11 : 78m2 + ROOFTOP: 5m2)

2038 x 0.75 = 1529
1529 x 0.025 = 38.2kL
38.2 x 2 weeks = 77kL TANK

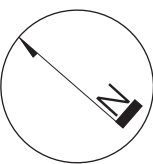
EASEMENT LANDSCAPE AREA 415m2 (turf area not included [596m2])

415 x 0.75 = 312
312 x 0.025 = 7.8kL
7.8 x 2 weeks = 16kL TANK



PLANTER MAINTENANCE PLAN
SCHEMATIC DESIGN | LOT 18A HAMILTON

PLANS AND DOCUMENTS
referred to in the PDA
DEVELOPMENT APPROVAL
Approval no: DEV2024/1581
Date: 8 May 2025



2404600 SD-015
2025-03-12 ISSUE C
Copyright by Dunn + Moran Landscape Architects Pty Ltd. This drawing or parts thereof may not be reproduced for any purpose without the consent of Dunn + Moran Landscape Architects.



INDICATIVE LANDSCAPE CHARACTER

SCHEMATIC DESIGN | LOT 18A HAMILTON

PLANS AND DOCUMENTS
referred to in the PDA
DEVELOPMENT APPROVAL

Approval no: DEV2024/1581

Date: 8 May 2025



DUNN
MORAN
LANDSCAPE ARCHITECTS

2404600 SD-016
2025-03-12 ISSUE C
Copyright by Dunn + Moran Landscape Architects Pty Ltd. This drawing or parts thereof may not be reproduced for any purpose without the consent of Dunn + Moran Landscape Architects.

Roof Terrace, Colour Palette



PLANS AND DOCUMENTS
referred to in the PDA
DEVELOPMENT APPROVAL

Approval no: DEV2024/1581

Date: 8 May 2025



Queensland
Government



Timber roof & batten panelling



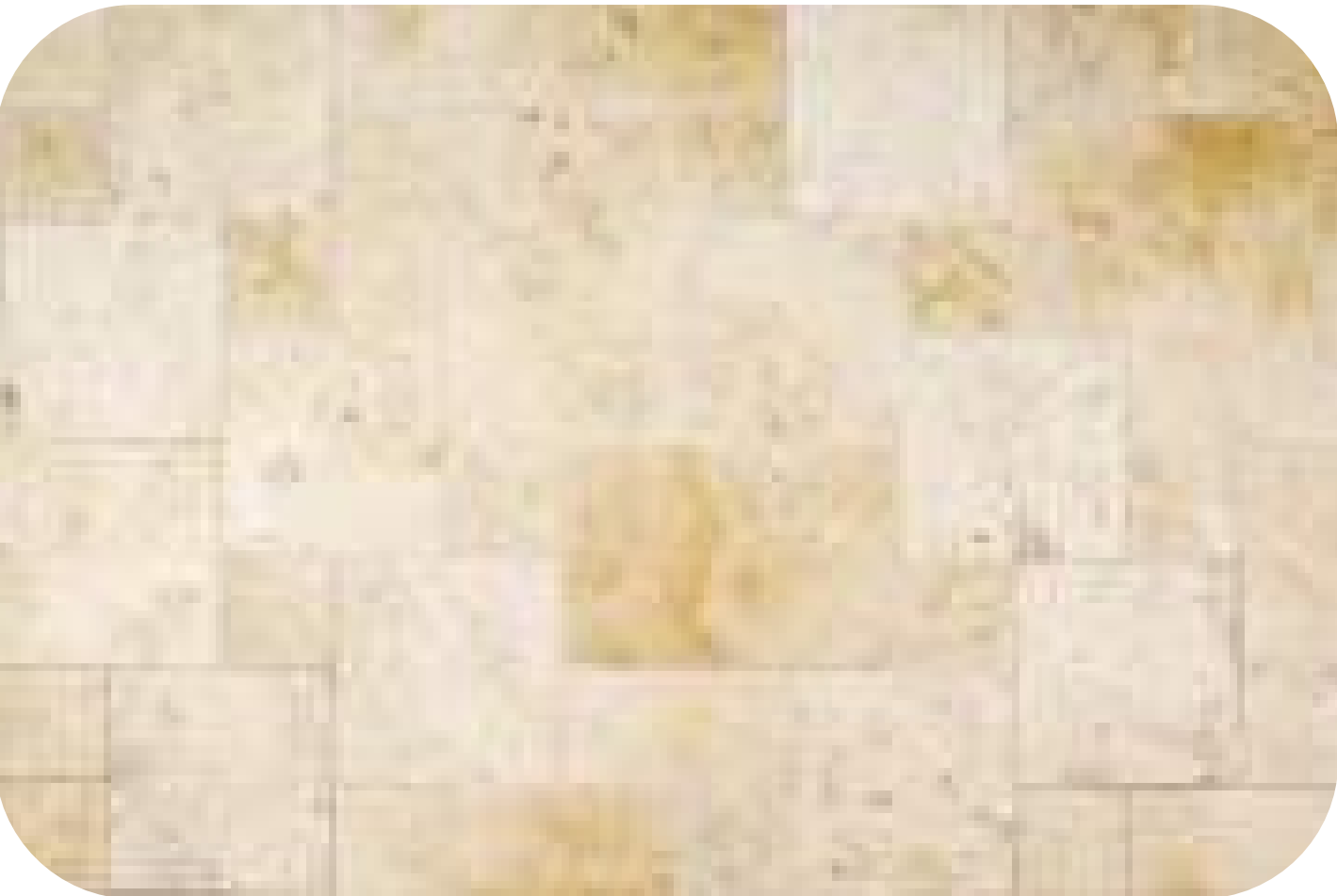
Natural look stone wall



Overhead planters



Lighting



Travertine floor tile



Sandstone sitting elements [Cross Block Link]



Travertine floor tile



Freeform stone floor tile



Pool tile



Pool tile



Pool coping tile



Walling



ACMENA hemilampra



ATRACTOCARPUS fitzalanii



LIVISTONA australis



ELAEOCARPUS eumundii



CRASSULA ovata

INTERNAL SITE PLANTING

TREES

SPECIES	COMMON NAME
ATRACTOCARPUS fitzalanii	Native Gardenia
ELAEOCARPUS eumundi	Smooth Quandong
LIVISTONA australis	Cabbage Palm

SHRUBS

SPECIES	COMMON NAME
CASUARINA glauca 'Greenwave'	Green Wave
CRASSULA ovata	Jade plant
KALANCHOE 'Silver Spoons'	Silver Spoons
RHIPSALIS teres f. heteroclada	Mistletoe Cactus
WESTRINGIA fruticosa 'Jervis Gem'	Jervis Gem

GROUNDCOVERS

SPECIES	COMMON NAME
APTENIA cordifolia	Heartleaf Ice Plant
AUSTROMYRTUS dulcis	Midgen Berry
CARPOBROTUS 'Aussie Rambler'	Pig Face
DICHONDRA 'Emerald Falls'	Emerald Falls
GOODENIA ovata	Hop Goodenia
JUNCUS usitatus	Common Rush
MYOPORUM parvifolium	Creeping Boobialla
VIOLA hederacea	Native Violet



WESTRINGIA Jervis Gem



AUSTROMYRTUS dulcis



GOODENIA ovata



MYOPORUM parvifolium



VIOLA hederacea

PLANS AND DOCUMENTS
referred to in the PDA
DEVELOPMENT APPROVAL

Approval no: DEV2024/1581
Date: 8 May 2025



CALATHEA zebrina



DIANELLA brevipedunculata



LIRIOPE Evergreen Giant



TRACHELOSPERMUM jasminoides



CRINUM pedunculatum

EASEMENT PLANTING

SPECIES	COMMON NAME
FICUS coronata	Sandpaper Fig
ELAEOCARPUS grandis	Blue Quandong
FLINDERSIA schottiana	Cudgeri
CRINUM pedunculatum	Swamp Lily
MYOPORUM ellipticum	Coastal Boobialla