

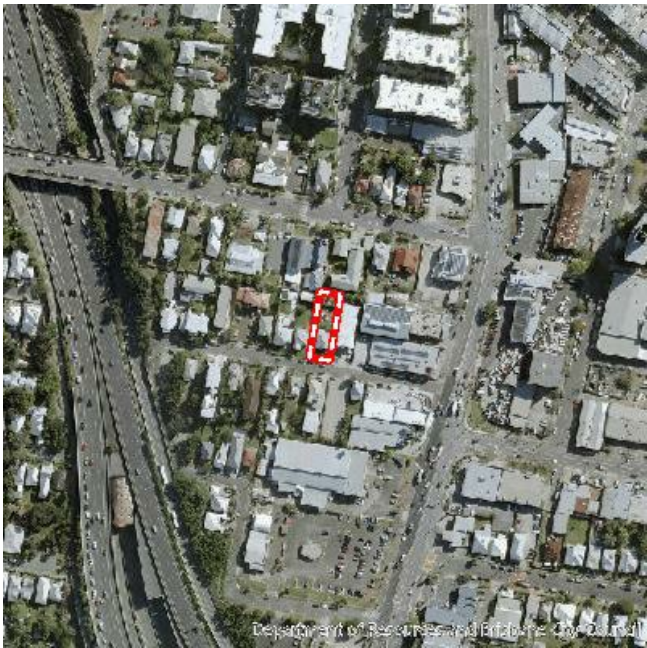
The property holding report shows the zone/s, neighbourhood plan/s, overlays and related information that apply to all lots associated with the property holding.

Property Address

9 WILTON ST WOOLLOONGABBA 4102

Parcel Details

**Full Property Holding:**  
Lot 45 on RP12250  
**Title Area \*:** 759 m<sup>2</sup>  
**Ward:** THE GABBA  
**PDF Maps GRID Reference:** Map 28  
\* refer NOTES below  
[Open CityPlan.Brisbane.qld.gov.au](https://cityplan.brisbane.qld.gov.au)



Zones

Name	Description
MU1 Mixed use (Inner city)	The purpose of the Mixed use zone code is to provide for a mixture of development that may include business, retail, residential, tourist accommodation and associated services, service industry and low impact industrial uses. Refer to Part 6 in the City Plan 2014 and the Factsheets.

Neighbourhood Plans

Name	Description
Woolloongabba centre neighbourhood plan	Neighbourhood Plans provide detailed guidance for development on sites within a Neighbourhood Plan boundary. Refer to the Woolloongabba centre neighbourhood plan codea>.
Ipswich Road and Stanley Street corridor precinct - NPP-003	Ipswich Road and Stanley Street corridor precinct - NPP-003 of the Woolloongabba centre neighbourhood plan.

Overlays

Name	Description
Airport environs overlay	The Airport environs overlay deals with issues of State Interest. It may also include locally identified issues that relate to airport environments. Refer to Part 8 in the City Plan 2014.
OLS - Horizontal limitation surface boundary	OLS – Horizontal limitation surface boundary sub-categories of the Airport environs overlay. NOTE: Where development intrudes into an airport’s OLS or PANS-OPS, advice from the Civil Aviation Safety Authority should be sought.
Procedures for air navigation surfaces (PANS)	Procedures for air navigation surfaces (PANS) sub-categories of the Airport environs overlay. NOTE: Where development intrudes into an airport’s OLS or PANS-OPS, advice from the Civil Aviation Safety Authority should be sought.
BBS zone - Distance from airport 8-13km	BBS zone - Distance from airport 8-13km sub-categories of the Airport environs overlay.

Name	Description
Community purposes network overlay	<p>The Community purposes network overlay implements the policy direction in the Strategic framework with respect to Brisbane's coordinated infrastructure planning and delivery, identifying land within the Community purposes network. Refer to Part 8, Part 10 Other Plans, Part 10.3.1 long term infrastructure plans for the Community Purpose Network in the City Plan 2014 and the Factsheets.</p> <p>The Community purposes network overlay includes the following sub-categories:</p> <ul style="list-style-type: none"><li>• Existing trunk park sub-category</li><li>• Existing non-trunk park sub-category</li><li>• Existing community facilities and land for community facilities sub-category</li><li>• LGIP planned land for community facilities specific location sub-category</li><li>• LGIP planned park acquisition specific location sub-category</li><li>• LGIP planned park upgrade specific location sub-category</li><li>• LGIP planned park embellishment specific location sub-category</li><li>• LGIP planned corridor park specific location sub-category</li><li>• Long term land for community facilities specific location sub-category</li><li>• Long term park specific location sub-category</li><li>• Long term corridor park specific location sub-category</li></ul> <p>Refer to the Community purposes network map to see which sub-categories are relevant to specific properties.</p> <p>For property enquiries relating to long term infrastructure contact Council via the Pre-lodgement advice service.</p>
Critical infrastructure and movement network overlay	<p>The Critical infrastructure and movement network overlay identifies critical assets and movement networks. Refer to Part 8 in the City Plan 2014.</p> <p>The Critical infrastructure and movement network overlay includes:</p> <ul style="list-style-type: none"><li>• Critical assets sub-category</li><li>• Critical infrastructure and movement planning area sub-category</li></ul> <p>Refer to the overlay map to see which sub-categories are relevant to specific properties.</p>
Critical assets sub-category	<p>Critical assets sub-category of the Critical infrastructure and movement network overlay.</p>
Critical infrastructure and movement planning area sub-category	<p>Critical infrastructure and movement planning area sub-category of the Critical infrastructure and movement network overlay.</p>
Heritage overlay	<p>The Heritage overlay deals with areas or sites identified as having local or state heritage significance and properties that adjoin such sites. Refer to Part 8 in the City Plan 2014 and the Factsheets.</p>
Area adjoining heritage sub-category	<p>Area adjoining heritage sub-category of the Heritage overlay.</p>
Potential and actual acid sulfate soils overlay	<p>The Potential and actual acid sulfate soils overlay deals with issues of State Interest. It may include areas of land identified within Brisbane as having potential or actual acid sulfate soils. Refer to Part 8 in the City Plan 2014.</p>
Potential and actual acid sulfate soils sub-category	<p>Potential and actual acid sulfate soils sub-category of the Potential and actual acid sulphate soils overlay.</p>
Land above 5m AHD and below 20m AHD sub-category	<p>Land above 5m AHD and below 20m AHD sub-category of the Potential and actual acid sulphate soils overlay.</p>

Name	Description
Road hierarchy overlay	<p>The Road hierarchy overlay applies to the existing and future road networks, including state controlled roads. Refer to Part 8 and Part 10 Other Plans, Part 10.3.3 long term infrastructure plans (corridor plan) for the road network in the City Plan 2014 and the Factsheets.</p> <p>The Road hierarchy overlay includes:</p> <ul style="list-style-type: none"> <li>• Motorways sub-category</li> <li>• Arterial roads sub-category</li> <li>• Suburban roads sub-category</li> <li>• District roads sub-category</li> <li>• Neighbourhood roads sub-category</li> <li>• Future motorway sub-category</li> <li>• Future arterial road sub-category</li> <li>• Future suburban road sub-category</li> <li>• Future district road sub-category</li> <li>• Primary freight routes sub-category</li> <li>• Primary freight access sub-category</li> </ul> <p>Refer to the overlay map to see which sub-categories are relevant to specific properties.</p> <p>NOTE: Land that adjoins land where an overlay sub-category applies, is within the overlay sub-category.</p>
Streetscape hierarchy overlay	<p>The Streetscape hierarchy overlay identifies the various functions of the streetscape network and determines how development is assessed to ensure high quality subtropical streetscape outcomes are achieved. Refer to Part 8 in the City Plan 2014. The Streetscape hierarchy overlay includes:</p> <ul style="list-style-type: none"> <li>• Subtropical boulevard - in centre verge width 6m sub-category</li> <li>• Subtropical boulevard - in centre verge width 5m sub-category</li> <li>• Subtropical boulevard - in centre verge width 3.75m/4.25m sub-category</li> <li>• Subtropical boulevard - out of centre verge width 6m sub-category</li> <li>• Subtropical boulevard - out of centre verge width 5m sub-category</li> <li>• Subtropical boulevard - out of centre verge width 3.75m/4.25m sub-category</li> <li>• Centre street major sub-category</li> <li>• Centre street minor sub-category</li> <li>• Neighbourhood street major subcategory</li> <li>• Neighbourhood street minor sub-category</li> <li>• Industrial street sub-category</li> <li>• Pathway link sub-category</li> <li>• Corner land dedication sub-category</li> <li>• Locality street subcategory</li> <li>• Laneway sub-category</li> <li>• Wildlife movement solution sub-category</li> </ul> <p>Refer to the overlay map to see which sub-categories are relevant to specific properties.</p> <p>NOTE: Land that adjoins land where an overlay sub-category applies, is within the overlay sub-category.</p>
Transport noise corridor overlay	<p>The Transport noise corridor overlay deals with areas of land identified as being affected by transport noise as established under Chapter 8B of the Building Act 1975. It may include areas of land affected by noise from:</p> <ul style="list-style-type: none"> <li>• State controlled roads (State mapping)</li> <li>• Franchised roads</li> <li>• Local government controlled roads</li> <li>• Railway land (State mapping)</li> </ul>
<p>Noise corridor - Brisbane: Queensland Development Code MP4.4 Noise Category 1 sub-category</p> <p>Designated State Noise corridor - State controlled road (MANDATORY area): Category 0: Noise Level &lt; 58 dB(A)</p>	<p>Queensland Development Code MP4.4 Noise Category 1 sub-category of the Transport noise corridor overlay.</p> <p>Designated State Noise corridor - State-controlled road (MANDATORY area): Category 0: Noise Level &lt; 58 dB(A) of the Transport noise corridor overlay.</p>

Name	Description
Designated State Noise corridor - State controlled road (MANDATORY area): Category 1: 58 dB(A) - 63 dB(A)	Designated State Noise corridor - State-controlled road (MANDATORY area): Category 1: 58 dB(A) - 63 dB(A) of the Transport noise corridor overlay.

## Local Government Infrastructure Plan

Name	Description
INCLUDED in Priority Infrastructure Area Note. - some properties may be only partly included in the Priority Infrastructure Area.	The priority infrastructure area identifies the areas that the local government prioritises in order to provide trunk infrastructure for urban development. The purpose of the priority infrastructure area is to align the footprint for development with the plans for trunk infrastructure. LGIP maps are referenced in Part 4 of City Plan 2014. Local Government Infrastructure Plan mapping and support material are in Schedule 3 of City Plan 2014. Refer to Factsheets.
Plans for Trunk Infrastructure (PFTI) PFTI Map Grid Reference Map Grid 213 All networks applicable	All Networks. The Plans for Trunk Infrastructure maps (Schedule 3) have been grouped by map tile. Please also refer to the map indexes relevant to each of the networks: Transport network (pathway network and ferry terminals network) maps; Public parks and land for community facilities network maps; Transport network (road network) maps; Stormwater network maps; NOTE: The water supply network and sewerage network related information is now included in Queensland Urban Utilities (QUU) water netserv plan. Further details can be obtained from QUU.

## Other Plans

Name	Description
Stormwater network	<p>The Stormwater Code and the Long term infrastructure plans Other plan map for the Stormwater network implements the policy direction in the Strategic framework with respect to a coordinated infrastructure planning and delivery, identifying land within the Stormwater network. Refer to Part 9, Part 10 Other Plans, Part 10.3.2 long term infrastructure plans for the Stormwater network in the City Plan 2014 and the Factsheets.</p> <p>The Long term infrastructure plans Other plan map for the Stormwater network includes the following types of items:</p> <ul style="list-style-type: none"><li>• Bioretention swale</li><li>• Land</li><li>• Natural channel</li><li>• Pipe (new)</li><li>• Pipe (relief drainage)</li><li>• Culvert</li><li>• Stormwater quality improvement device</li><li>• Rehabilitation</li><li>• Backflow prevention device</li></ul> <p>Refer to the Other plan map for Stormwater network to see which items are relevant to specific properties.</p> <p>For property enquiries relating to long term infrastructure contact Council via the Pre-lodgement advice service.</p>

Regard must be had to the *Brisbane City Plan 2014* when interpreting this property report (*this Report*). Some information relating to overlays and neighbourhood plans may not be shown in the Report.

#### NOTES


- a) Areas shown in this Report are approximate only.
- b) Contour information shown is from Council's 2002 Contour records.
- c) Further information on mining tenements issued under the Mineral Resources Act 1989 can be obtained from the Queensland State Government.
- d) A [Temporary Local Planning Instrument \(TLPI\)](#) may affect a particular property. TLPIs are not identified in this report. Visit the Temporary Local Planning Instrument page at [www.Brisbane.qld.gov.au](http://www.Brisbane.qld.gov.au) to confirm whether this property is included in a TLPI.
- e) Users of the information recorded in this document (the **Information**) accept all responsibility and risk associated with the use of the Information and acknowledge that regard must be had to the planning scheme provisions in interpreting the Information. Council gives no warranty in relation to the Information (including accuracy, reliability, completeness, currency or suitability) and accepts no liability (including without limitation, liability in negligence) for any loss, damage or costs (including consequential damage), relating to any use of this Information.

© Copyright Brisbane City Council 2023

**Area adjoining heritage**

 Area adjoining heritage

**Local Government Authorities**

 LGA boundary

**Property boundaries holding**

 Property Holding