

ROCKPOOL HAMILTON NORTH

280 MacArthur Avenue Hamilton 4007

Landscape Architectural DA Submission 21.09.24

PLANS AND DOCUMENTS
referred to in the PDA
DEVELOPMENT APPROVAL

Approval no: DEV2024/1529/2
Date: 07 March 2025

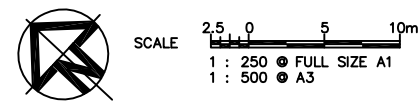


AMENDED IN RED

By: Elrico Koeberg
Date: 13/02/2025



Drawing No.	Title
FIGURE 1	Site Plan & Drawing Index
FIGURE 2	Open Space Areas - Ground Floor
FIGURE 3	Open Space Areas - Level 1
FIGURE 4	Concept Plan - Ground Floor
FIGURE 5	Concept Plan - Level 1
FIGURE 6	Elevations - Sheet 1 of 2
FIGURE 7	Elevations - Sheet 2 of 2
FIGURE 8	Sections Plan
FIGURE 9	Pavement & Edging Details
FIGURE 10	Fencing Details
FIGURE 11	General Planting Details
FIGURE 12	General Planting Notes & Schedule
FIGURE 13	Resident Garden Detail
FIGURE 14	Wanderer's Courtyard Detail
<p>ADDITIONAL INFORMATION</p> <p>CONCEPT SECTION - RESIDENT GARDEN DETAIL</p> <p>CONCEPT SECTION - WANDERER'S COURTYARD</p>	



LEVEL 1 SOFTSCAPE



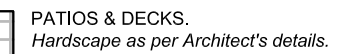
ANGORA ROAD



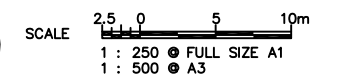
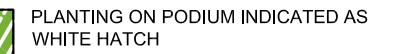
SCALE 2.5 0 5 10m
1 : 250 ● FULL SIZE A1
1 : 500 ● A3

			© Butler and Webb Pty Ltd All Rights Reserved 2024. Copyright of this drawing and designs belongs to Butler and Webb Pty Ltd and may not be copied, used, sold, transferred, or reproduced in whole or in part in any form, without prior agreement with Butler and Webb Pty Ltd. Do not scale from this Drawing, use dimensions provided, if in doubt please enquire. All dimensions and levels to be verified on site.	DESIGNED: JB DRAWN: CJ CHECKED: JB	A1	DATUM: A.H.D.	Butler and Webb MASTERPLANNING ARCHITECTURAL MODELMAKING LANDSCAPE ARCHITECTURE CULTURAL RESOURCE MANAGEMENT	Brisbane Office: P.O. Box 181 Scarborough Qld. 4030 Phone: 07 3142 4834 Email: webbnbt@ozemail.com.au			NORTHSHORE AGED CARE for ROCKPOOL Pty Ltd CNR MACARTHUR AVE AND ANGORA RD, HAMILTON LANDSCAPE WORKS OPEN SPACE AREAS - LEVEL 1	DATE: 24.07.24 DRAWING No: FIGURE 3	A Rv
A	26.06.24	ORIGINAL ISSUE											
Rv	DATE	REVISIONS		RECOMMENDED: PROJ. MAN.	APPROVED: PROJ. DIR.								

HARDSCAPE



GENERAL LANDSCAPE TREATMENT
Layered plantings of shrubs, clumping and groundcovers - max. height 1.0m. Eg species:
 Alcalpha reptans, Carpobrotus glaucescens,
 Crassula ovata, Gardenia spp., Gazania rigens,
 Hymenocallis sp., Melaleuca 'Claret Tops',
 Nandina spp., Ophiopogon 'Stripie White',
 Strelitzia regina, Viola banksii, Zamia fureurea,
 Zamiculcas zamifolia, & Zoysia tenuifolia.

[illegible]



<div style="display: flex; justify-content: space-between;"> <div> <p>A 26.06.24</p> <p>Rv DATE</p> </div> <div> <p>ORIGINAL ISSUE</p> <p>REVISIONS</p> </div> </div>			<p>© Butler and Webb Pty Ltd All Rights Reserved 2024. Copyright of this drawing and designs belongs to Butler and Webb Pty Ltd and may not be copied, used, sold, transferred or reproduced in whole or in part in any form, without prior agreement with Butler and Webb Pty Ltd. Do not scale from this Drawing, use dimensions provided, if in doubt please enquire. All dimensions and levels to be verified on site.</p>		<div style="display: flex; flex-direction: column;"> <div> <p>DESIGNED: JB</p> <p>DRAWN: CJ</p> <p>CHECKED: JB</p> </div> <div> <p>RECOMMENDED: PROJ. MAN.</p> </div> </div>		<div style="display: flex; flex-direction: column;"> <div> <p>A1</p> <p>A.H.D.</p> </div> <div> <p>APPROVED: PROJ. DIR.</p> </div> </div>		<div style="display: flex; justify-content: space-between;"> <div> <p>Butler and Webb</p> <p>MASTERPLANNING ARCHITECTURAL MODELMAKING</p> <p>LANDSCAPE ARCHITECTURE CULTURAL RESOURCE MANAGEMENT</p> </div> <div> <p>BRISBANE OFFICE P.O. Box 181 Scarborough Qld. 4020 Phone: 07 3142 4834 Email: webbnet@icemail.com.au</p> </div> </div>		<div style="display: flex; justify-content: space-around;">   </div>		<p>NORTHSHORE AGED CARE for ROCKPOOL Pty Ltd</p> <p>CNR MACARTHUR AVE AND ANGORA RD, HAMILTON</p> <p>LANDSCAPE WORKS</p> <p>ELEVATIONS - SHEET 1 OF 2</p>		<div style="display: flex; justify-content: space-between;"> <div> <p>DATE: 24.07.24</p> <p>DRAWING No: FIGURE 6</p> </div> <div> <p>A</p> <p>Rv</p> </div> </div>	
--	--	--	--	--	--	--	---	--	--	--	--	--	---	--	--	--



 **KARAKUL ROAD ELEVATION**
SCALE 1:250 @ A1



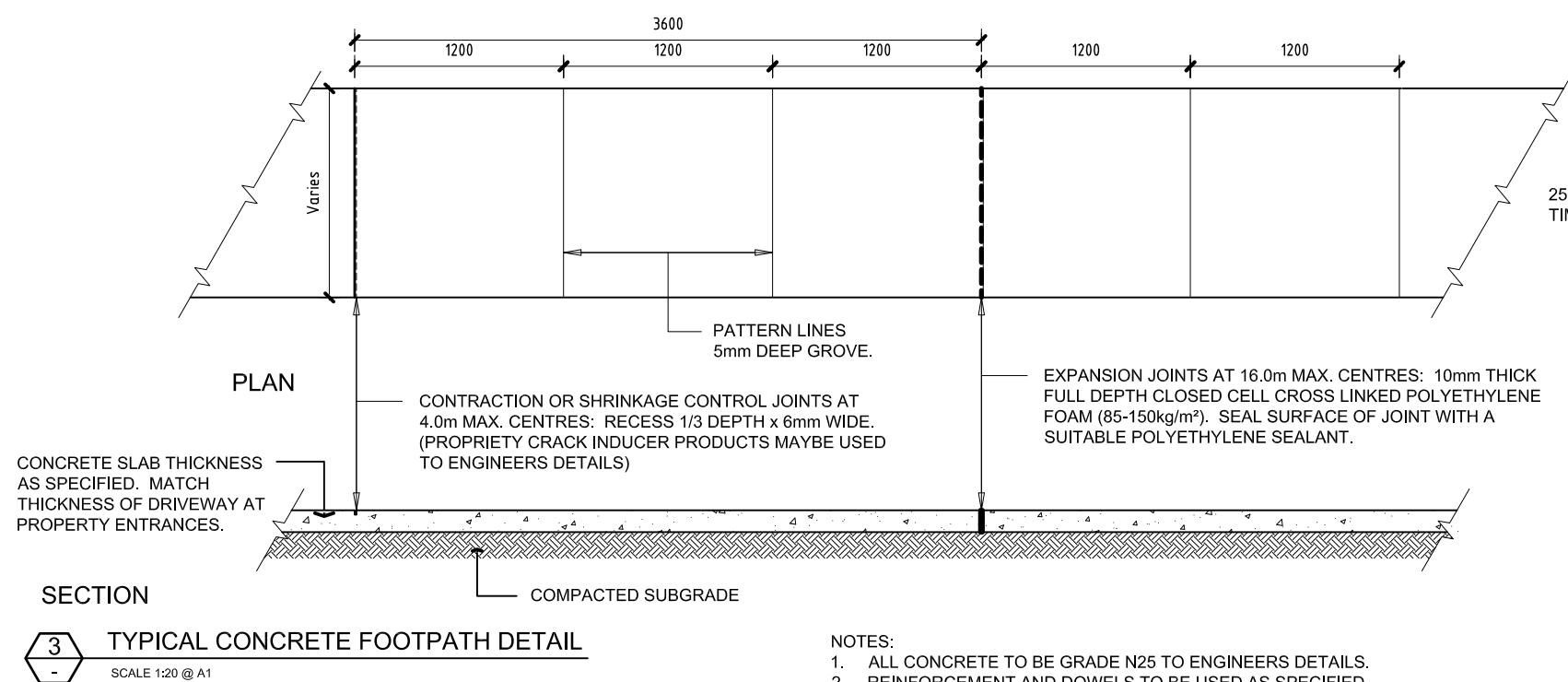
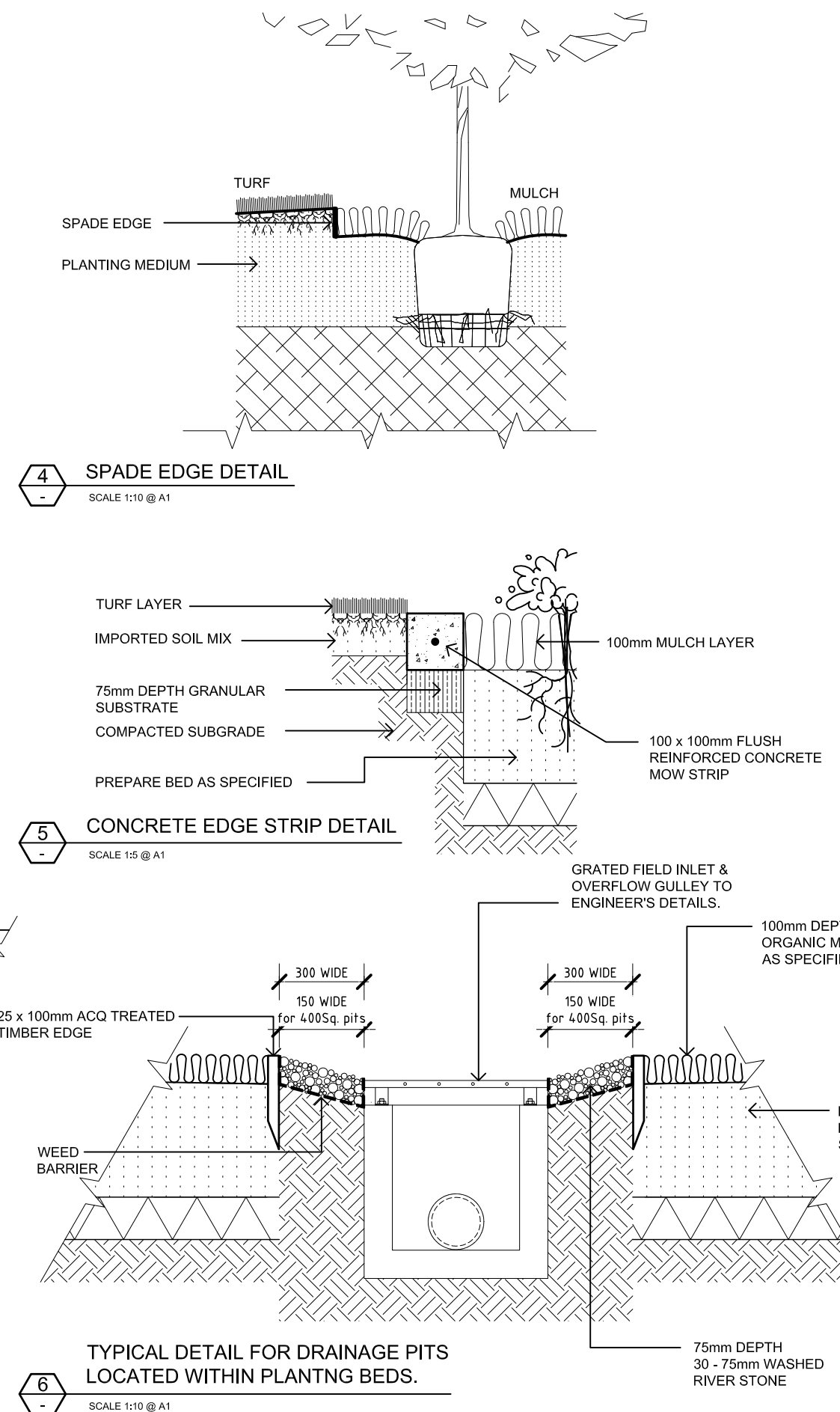
 **NORTHWESTERN ELEVATION (FROM NEIGHBOUR)**
SCALE 1:250 @ A1

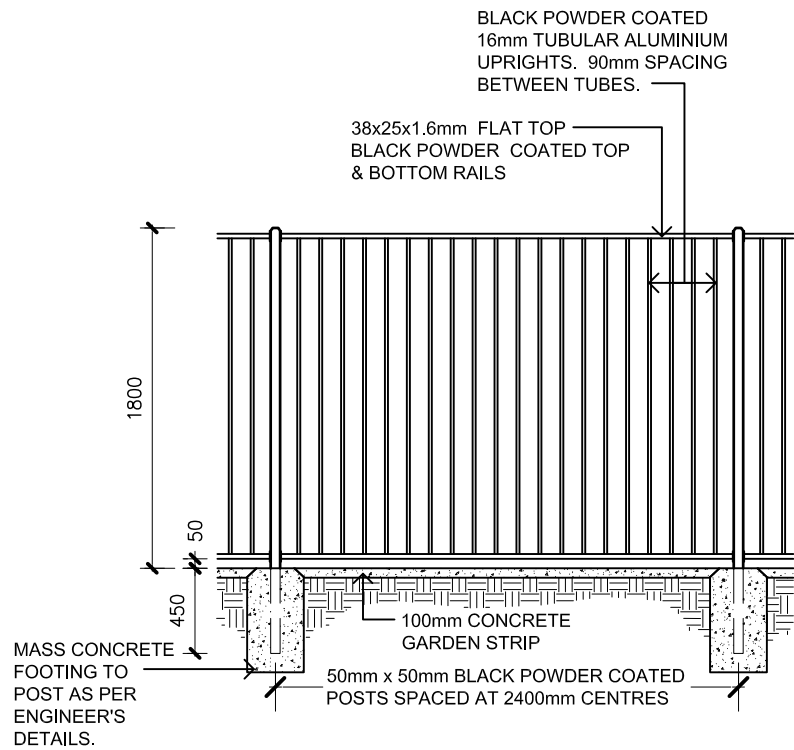


SECTION B
SCALE 1:250 @ A1



SECTION A
SCALE 1:250 @ A1



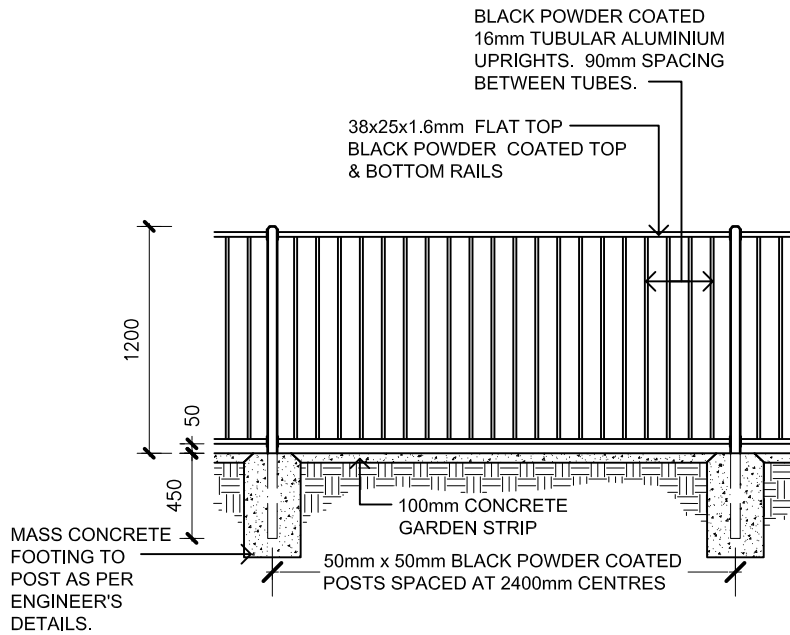


ELEVATION

1800 HIGH BLACK 'FLAT TOP' POOL
FENCE WITH ALUMINUM POSTS DETAIL



SCALE 1:20 @ A1

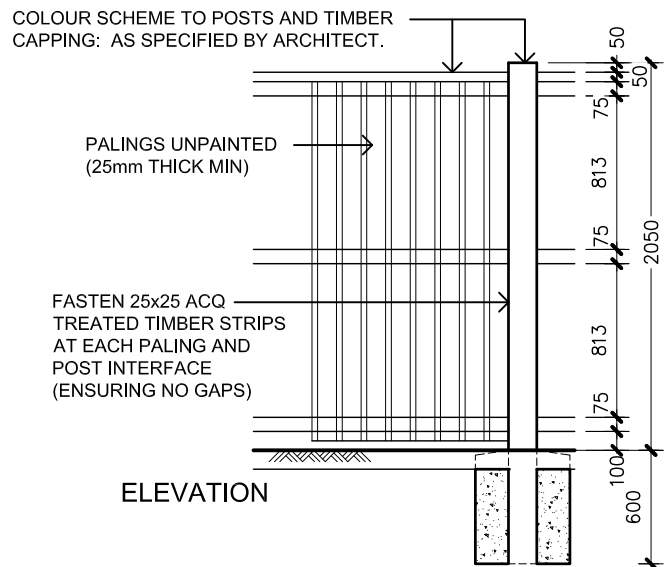


ELEVATION

1200 HIGH BLACK 'FLAT TOP' POOL
FENCE WITH ALUMINUM POSTS DETAIL



SCALE 1:20 @ A1

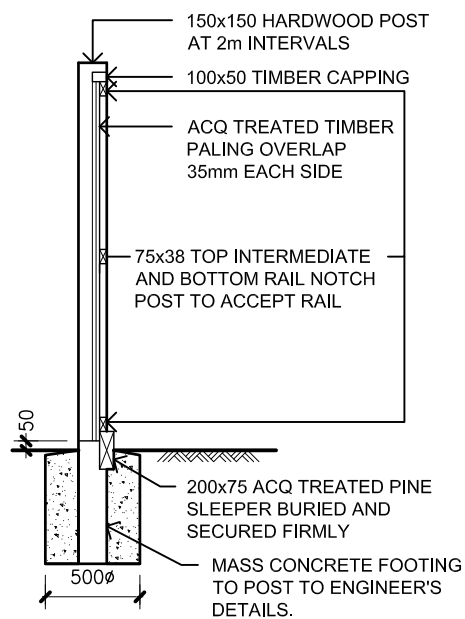


ELEVATION

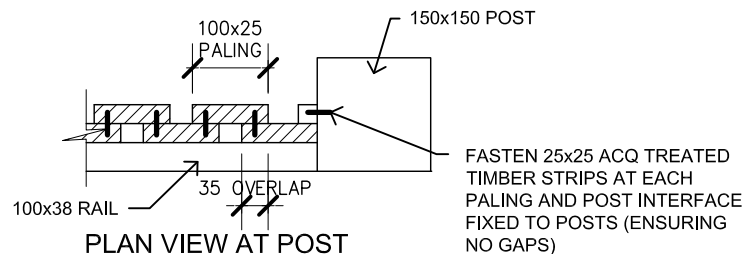
2000mm HIGH TIMBER
ACOUSTIC FENCE DETAIL



SCALE 1:20 @ A1



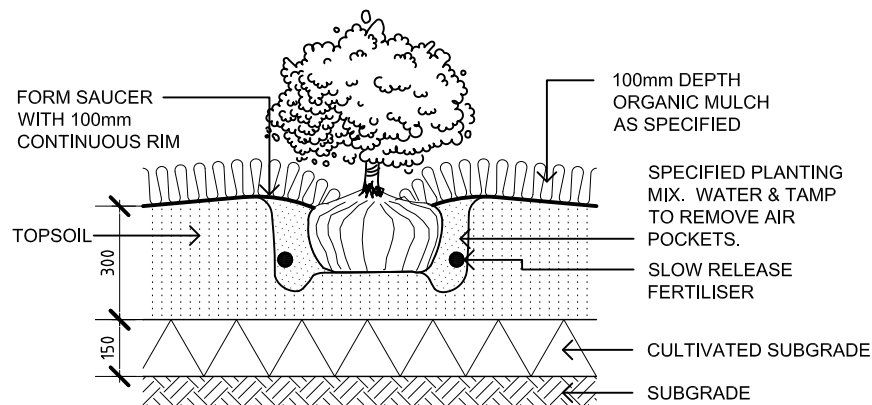
SECTION



PLAN VIEW AT POST
ACOUSTIC FENCE DETAIL



SCALE 1:5 @ A1



1 GROUNDCOVER / SHRUB PLANTING DETAIL
SCALE 1:10 @ A1

REMOVE ALL STAKING AS SOON AS THE TREE HAS GROWN SUFFICIENT ROOTS TO OVERCOME THE PROBLEM THAT REQUIRED THE TREE TO BE STAKED, STAKES SHALL BE REMOVED NO LATER THAN THE END OF THE FIRST GROWING SEASON AFTER PLANTING. TREES NORMALLY DO NOT NEED TO BE STAKED AND STAKING CAN BE HARMFUL TO THE TREE, STAKING SHOULD BE DONE ONLY WITH THE APPROVAL OF THE LANDSCAPE ARCHITECT IF IT IS EXPECTED THAT THE TREE WILL NOT BE ABLE TO SUPPORT ITSELF. THE FOLLOWING ARE REASONS WHY TREES DO NOT REMAIN STRAIGHT:

- TREES WITH POOR QUALITY ROOT BALLS OR ROOT BALLS THAT HAVE BEEN CRACKED OR DAMAGED, REJECT RATHER THAN STAKE.
- TREES THAT HAVE GROWN TOO CLOSE TOGETHER IN THE NURSERY, RESULTING IN WEAK TRUNKS, REJECT RATHER THAN STAKE.
- PLANTING PROCEDURES THAT DO NOT ADEQUATELY TAMP SOILS AROUND THE ROOT BALL, CORRECT THE PLANTING PROCEDURE.
- ROOT BALLS PLACED ON SOFT SOIL, TAMP SOILS UNDER ROOT BALL PRIOR TO PLANTING.
- ROOT BALLS WITH VERY SANDY SOIL OR VERY WET CLAY SOIL, STAKING ADVISABLE.
- TREES LOCATED IN A PLACE OF EXTREMELY WINDY CONDITIONS, STAKING ADVISABLE.

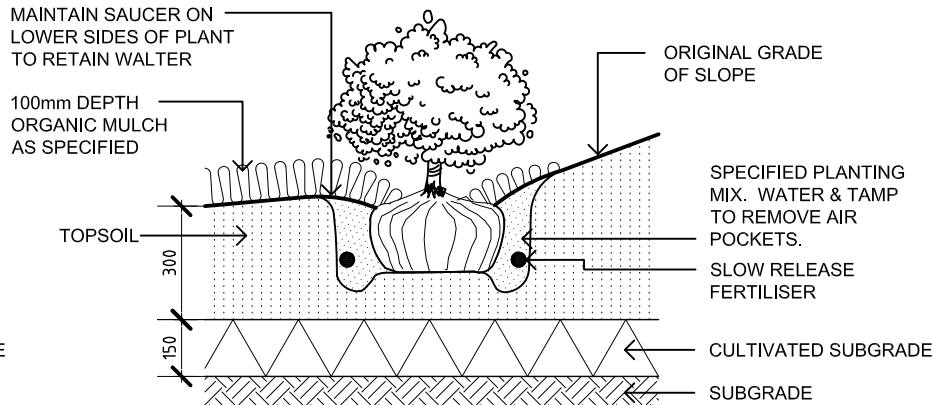
SET TOP OF ROOTBALL FLUSH TO GRADE OR 25-50mm IN SLOWLY DRAINING SOILS. TREE MUST BE PLANTED SUCH THAT THE TRUNK FLARE IS VISIBLE AT THE TOP OF THE ROOT BALL. TREES WHERE THE TRUNK FLARE IS NOT VISIBLE SHALL BE REJECTED. DO NOT COVER THE TOP OF THE ROOT BALL.

50mm WIDE HESSIAN SECURED LOOSELY TO TREE & FIXED TO STAKE WITH FLATHEAD GALV. NAIL OR STAPLES. HEIGHT OF HESSIAN TIE TO BE ONE THIRD TO ONE HALF OF OVERALL TREE HEIGHT.

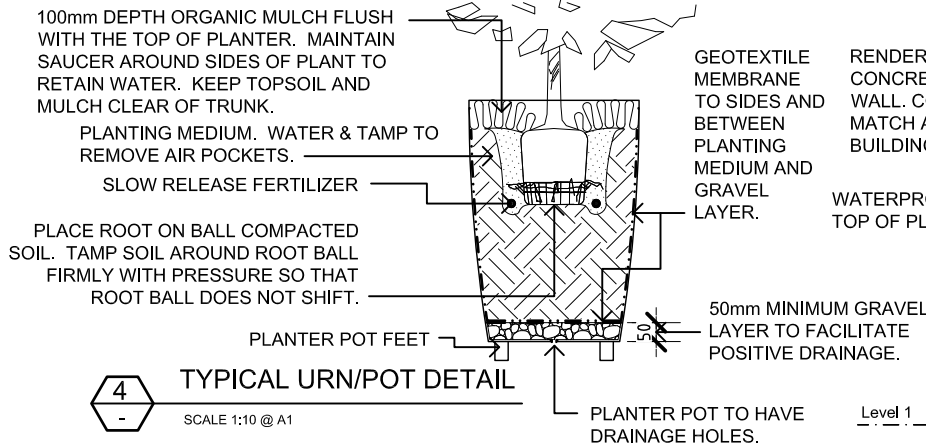
MOUND TOPSOIL OVER ROOTBALL AS SHOWN. KEEP TOPSOIL AND MULCH CLEAR OF TRUNK
PLANTING MEDIUM
100mm DEPTH ORGANIC MULCH AS SPECIFIED

NOTE:
ALL TREE STOCK TO COMPLY WITH AUSTRALIAN STANDARD AS2303:2015 TREE STOCK FOR LANDSCAPE USE.

3 TREE PLANTING DETAIL
SCALE 1:10 @ A1



2 SHRUB PLANTING ON SLOPES DETAIL
SCALE 1:10 @ A1



4 TYPICAL URN/POT DETAIL
SCALE 1:10 @ A1

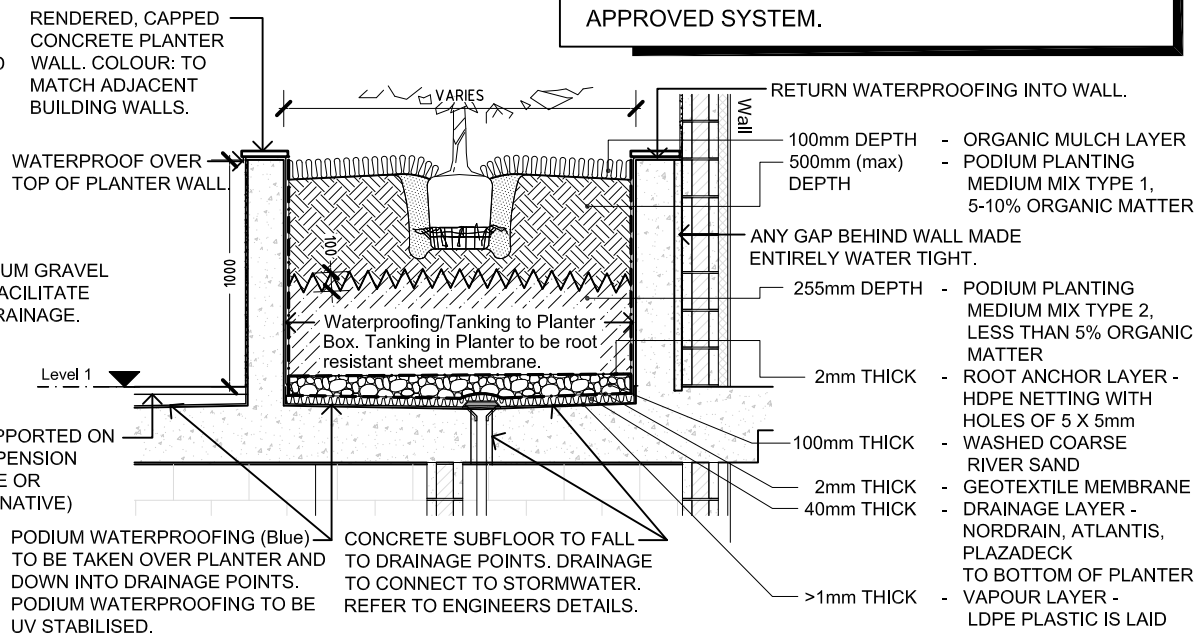
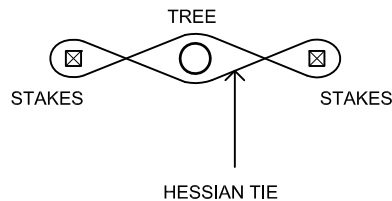
DO NOT HEAVILY PRUNE THE TREE AT PLANTING. PRUNE ONLY CROSSOVER LIMBS, CO-DOMINANT LEADERS, AND BROKEN OR DEAD BRANCHES. SOME INTERIOR TWIGS AND LATERAL BRANCHES MAY BE PRUNED; HOWEVER, DO NOT REMOVE THE TERMINAL BUDS OF BRANCHES THAT EXTEND TO THE EDGE OF THE CROWN.

2 No. 50x50x2100mm F14 NON-TREATED HARDWOOD STAKES FREE FROM KNOTS & WARPS ETC. STAKES TO BE DRIVEN INTO A DEPTH TO ENSURE STAKE DOES NOT DAMAGE LOWER LATERAL LIMBS. STAKES TO BE CENTRALLY POINTED & DRIVEN VERTICALLY INTO GROUND OUTSIDE OF ROOTBALL.

SLOW RELEASE FERTILISER

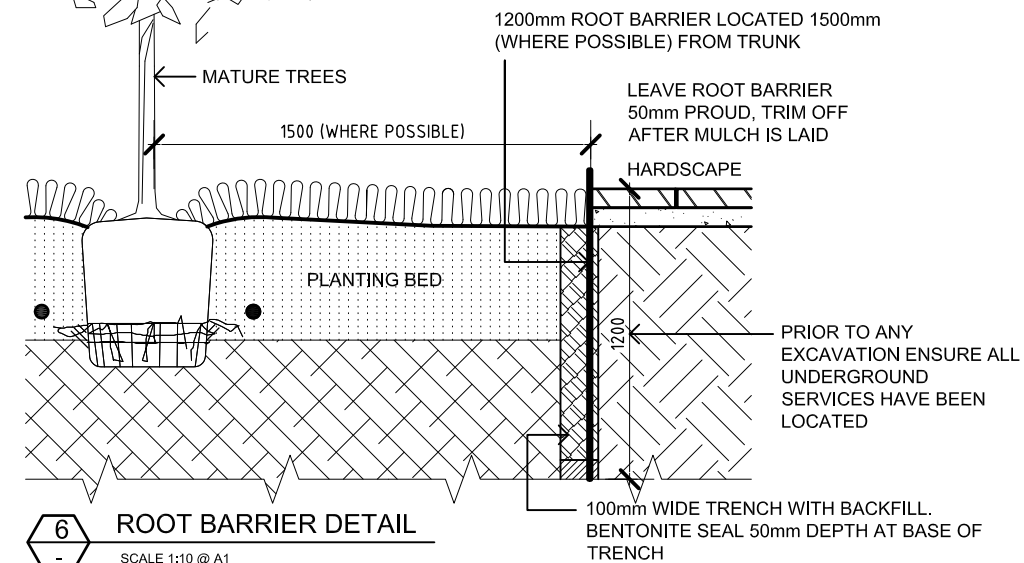
COMPACTED PLANTING MEDIUM

PLACE ROOT BALL ON COMPACTED SOIL. TAMP SOIL AROUND ROOT BALL FIRMLY WITH FOOT PRESSURE SO THAT ROOT BALL DOES NOT SHIFT.



5 LEVEL 1 PLANTING DETAIL - ON PODIUM
SCALE 1:20 @ A1

FOR FULL INSTALLATION GUIDES REFER TO www.rootbarrier.com.au



6 ROOT BARRIER DETAIL
SCALE 1:10 @ A1

PLANTING NOTES

EXISTING VEGETATION PROTECTION

PROTECTION OF EXISTING VEGETATION TO REMAIN SHALL COMPLY WITH AS 4970-2009 PROTECTION OF TREES ON DEVELOPMENT SITES.

EXCAVATION

PRIOR TO ANY EXCAVATION ENSURE ALL UNDERGROUND SERVICES HAVE BEEN LOCATED. REMOVE SOIL, GRASS, WEEDS, ROOTS AND OTHER DEBRIS TO 300mm BELOW THE TOP OF ADJACENT KERBS, HARD SURFACED MARGINS, AND FINISHED GROUND LEVELS. REMOVE FROM SITE AS DIRECTED.

SUB SOIL CULTIVATION

CULTIVATE THE REDUCED SUB-SOIL TO A DEPTH OF 300mm, BREAK UP SUB-SOIL BY MECHANICAL RIPPING AND DIGGING TO ASSIST DRAINAGE AND AERATION.

TOPSOIL MIXTURE

PLACE WEEDFREE AND SCREENED TOPSOIL MIXTURE. CONTRACTOR TO PROVIDE SOIL TEST TO DEMONSTRATE COMPLIANCE WITH AUSTRALIAN STANDARDS AS 4419.

ORGANIC MULCH

SUPPLY AND PLANCE 100mm MINIMUM DEPTH OF 25mm HOOP PINE 'NO FINES' MULCH TO COMPLY WITH AUSTRALIAN STANDARDS AS 4454.

FERTILISER

AN APPROVED 10GM SLOW RELEASE FERTILISER TABLET SUCH AS SIERRA CHEMICAL COMPANY 'AGRIFORM' PLANTING TABLETS, USED IN ACCORDANCE WITH MANUFACTURER'S RECOMMENDATIONS. A SURFACE DRESSING OF 'BLOOD AND BONE' FERTILISER SHALL BE PLACED ON THE SOIL WITHIN 300mm DIA. OF EACH PLANT AT MANUFACTURER'S RECOMMENDED RATE.

SUBSOIL DRAINAGE

SUPPLY AND INSTALL SUBSOIL DRAINAGE TO ALL GARDEN BEDS AND TREE PLANTING HOLES TO ENSURE EFFECTIVE DRAINAGE TO AS 3500. PROVIDE SUBSOIL DRAINS AS SPECIFIED WHERE NECESSARY TO INTERCEPT GROUND WATER SEEPAGE AND PREVENT WATER BUILDUP BEHIND RETAINING WALLS AND UNDER PAVEMENT. CONNECT SUBSOIL DRAINS TO STORMWATER DRAINAGE SYSTEM. OBTAIN DRAINAGE PLANS FROM OWNER OR OWNERS REPRESENTATIVE WHICH ARE NECESSARY FOR THE CONNECTION TO STORMWATER DRAINS. WHERE CONNECTION INTO AN EXISTING DRASIN IS REQUIRED, CARRY OUT THE EXCAVATION NECESSARY TO LOCATE AND EXPOSE THE CONNECTION POINT. ON COMPLETION REINSTATE THE SURFACES AND ELEMENTS WHICH HAVE BEEN DISCTURBED SUCH AS ROADS, PAVEMENTS, KERBS, FOOTPATHS AND VERGES.

DRAINAGE / SERVICES

REFER TO ENGINEER'S DRAWINGS FOR GRADING, DRAINAGE AND SERVICE INFORMATION.

IRRIGATION

CONTRACTOR TO PROVIDE DESIGN / BUILD SERVICE FOR AUTOMATIC SUB-MULCH DRIP IRRIGATION SYSTEM TO ALL LANDSCAPED PLANTING AREAS. CONTRACTOR TO ALLOW FOR ALL COMMERCIAL BACKFLOW PREVENTION DEVICES, ELECTRICAL AND WATER CONNECTIONS REQUIRED. CONTRACTOR TO CONTACT PROJECT HYDRAULIC / CIVIL ENGINEERS FOR INFRASTRUCTURE PROVIDED. CONTROLLER TO BE LOCATED IN FACILITY MAINTENANCE ROOM IN A LOCKABLE BOX. KEYS TO BE HELD BY COMPLEX MAINTENANCE PERSON OR OTHERS APPOINTED BY CLIENT. ALL FITTINGS TO BE COMMERCIAL GRADE. CONTRACTOR TO SUPPLY SHOP DRAWINGS FOR APPROVAL AND ISSUE A SET OF AS BUILT DRAWINGS TO CLIENT AFTER SUCCESSFUL COMMISSIONING OF SYSTEM. CONTRACTOR TO ENSURE TO SATISFACTION OF OWNER, NO OVERSPRAY TO HARD SURFACES WHICH COULD POTENTIALLY CAUSE A TRIP HAZARD.

MAINTENANCE

ALL LANDSCAPE AREAS (HARDSCAPE AND SOFTSCAPE) TO BE MAINTAINED FOR A PERIOD OF 26 WEEKS. CONTRACTOR RESPONSIBLE AT HIS/HER COST FOR REPLACEMENT OF ANY PLANTING MATERIALS NOT IN GOOD GROWING CONDITION AT END OF 26 WEEK PERIOD. ANY DEAD PLANT MATERIAL TO BE REPLACED WITHIN A 7 DAY PERIOD. ALLOW FOR A WEEKLY MAINTENANCE SCHEDULE DURING THE 26 WEEK PERIOD.

ADVANCED TREE PLANTING

ALL TREE STOCK TO COMPLY WITH AUSTRALIAN STANDARD AS2303:2015 TREE STOCK FOR LANDSCAPE USE.

EXCAVATE A SQUARE HOLE TWICE THE WIDTH OF THE ROOT BALL. CULTIVATE BASE OF HOLE TO A FURTHER DEPTH OF 100mm. LOOSED COMPACTED SIDES OF HOLE.

FILL HOLE WITH WATER AND LET DRAIN THOROUGHLY PRIOR TO PLANTING. NOTIFY CLIENT'S REPRESENTATIVE IF DRAINAGE PROBLEMS FROM THE HOLES ARE EXISTENT DUE TO EXISTING ROCK CONDITIONS DRAINAGE MAY BE REQUIRED FROM TREE PITS.

NAIL TIES TO APPROXIMATELY 300mm FROM TOP END. DRIVE IN STAKES AS SPECIFIED. POSITION THE TREE SO THAT THE TOPSOIL LEVEL OF THE ROOT BALL IS LEVEL WITH THE SURROUNDING FINISHED SURFACE. WHERE POSSIBLE POSITION THE TREE SO THAT THE BRANCHES DO NOT RUB AGAINST STAKES OR WILL IN FUTURE, CONFLICT WITH BUILDINGS OR OVERHEAD WIRES.

BACKFILL WITH AN EVEN MIXTURE OF EXCAVATED MATERIAL AND IMPORTED TOPSOIL. PLACE SLOW RELEASE FERTILISER TABLETS AT QUATER THE DEPTH OF THE ROOT BALL. DO NOT ALLOW TABLETS TO COME INTO CONTACT WITH ROOTS.

TAMP BACKFILL LIGHTLY AND FORM A TEMPORARY WATERING RING. FINISH SURFACE TREATMENT WITH 100mm DEPTH OF 25mm HOOP PINE 'NO FINES' MULCH.

WATER TREE THOROUGHLY TO ELIMINATE AIR POCKETS.

TURFING

OBTAIN TURF FROM A SPECIALIST TURF GROWER. PROVIDE TURF OF EVEN THICKNESS, FREE FROM WEEDS AND OTHER FOREIGN MATTER. DELIVER THE TURF WITHIN 24 HOURS OF CUTTING, AND LAY IT WITHIN 36 HOURS OF CUTTING. PREVENT IT FROM DRYING OUT BETWEEN CUTTING AND LAYING.

FERTILISING

MIX THE FERTILISER THOROUGHLY INTO THE TOPSOIL BEFORE PLACING THE TURF. APPLY LAWN FERTILISER AT THE COMPLETION OF THE FIRST AND LAST MOWINGS, AND AT OTHER TIMES REQUIRED TO MAINTAIN HEALTHY GRASS COVER.

LAYING

GENERAL

LAY THE TURF IN THE FOLLOWING MANNER:

- IN STRETCHER PATTERN WITH THE JOINTS STAGGERED AND CLOSE BUTTED.
- PARALLEL WITH THE LONG SIDES OF LEVEL AREAS, AND WITH CONTOURS ON SLOPES.
- FINISH FLUSH, AFTER TAMPING, WITH ADJACENT FINISHED SURFACES OF GROUND, PAVING AREAS, OR GRASS SEEDED AREAS.

STRIP TURF LAYING: CLOSE BUTT THE END JOINTS AND SPACE THE STRIPS 300mm APART. APPLY A LAYER OF TOP DRESSING BETWEEN THE STRIPS OF TURF. FINISH WITH AN EVEN SURFACE.

TAMPING: LIGHTLY TAMP TO AN EVEN SURFACE IMMEDIATELY AFTER LAYING, DO NOT USE A ROLLER.

PEGGING: ON STEEP SLOPES PEG TURF TO PREVENT DOWNSLOPE MOVEMENT. REMOVE PEGS WHEN THE TURF IS ESTABLISHED.

WATERING

WATER IMMEDIATELY AFTER LAYING UNTIL THE TOPSOIL IS MOISTENED TO ITS FULL DEPTH. CONTINUE WATERING TO MAINTAIN MOISTURE TO THIS DEPTH. KEEP THE GRASS IN A HEALTHY CONDITION.

MAINTENANCE

GENERAL: MAINTAIN TURFED AREAS UNTIL THE ATTAINMENT OF A DENSE CONTINUOUS SWARD OF HEALTHY GRASS OVER THE WHOLE TURFED AREA, EVENLY GREEN AND OF A CONSISTENT HEIGHT.

FAILED TURF: LIFT FAILED TURF AND RELAY WITH NEW TURF.

LEVELS: WHERE LEVELS HAVE DEVIATED FROM THE DESIGN LEVELS AFTER PLACING AND WATERING, LIFT TURF AND REGRADE TOPSOIL TO ACHIEVE DESIGN LEVELS.

TOP DRESSING

WHEN TURF IS ESTABLISHED MOW, REMOVE CUTTINGS AND LIGHTLY TOP DRESS TO A DEPTH OF 10mm. RUB THE DRESSING WELL INTO THE JOINTS AND CORRECT ANY UNEVENNESS IN THE TURF SURFACE.

INDICATIVE PLANTING SCHEDULE

TREES

Botanical Name	Common Name	Size	Planting Notes
Agathis robusta	Kauri Pine	100 Litre	Plant as shown.
Cupaniopsis anacardioides	Tuckeroo	200 Litre	Plant as shown.
Delonix regia	Poinciana	X-Ground 4x4m	Plant as shown.
Elaeocarpus eumundii	Eumundi Quandong	100 Litre	Plant as shown.
Harpulia pendula	Tulipwood	200 Litre	Plant as shown.
Lagerstroemia 'Natchez'	Compact White Crepe Myrtle	200 Litre	Plant as shown.
Lagerstroemia 'Tuscarora'	Compact Pink Crepe Myrtle	200 Litre	Plant as shown.
Polyalthia longifolia	Indian Mast Tree	100 Litre	Plant as shown.
Plumeria obtusa	Evergreen Frangipani	X-Ground 3x3m	Plant as shown.

SHRUBS / G'COVERS

Botanical Name	Common Name	Size	Planting Notes
Acalpha reptans	Cat's Tails	140mm pots	Plant at 400mm centres.
Acmena spp.	Lilly Pilly	300mm pots	Plant at 1.0m centres.
Asplenium australasicum	Crow's Nest	300mm pots	Plant at 800mm centres
Callistemon 'Slim'	Narrow Bottlebrush	300mm pots	Plant at 1.0m centres.
Carpobrotus glaucescens	Pig Face	140mm pots	Plant at 600mm centres.
Casuarina 'Cousin It'	Cousin It	140mm pots	Plant at 500mm centres.
Clivia minata	Kaffir Lily	200mm pots	Plant at 400mm centres.
Crassula ovata	Jade Plant	300mm pots	Plant at 800mm centres.
Gardenia radicans	Prostrate Gardenia	140mm pots	Plant at 400mm centres.
Gazania rigens	Gazania	140mm pots	Plant at 400mm centres.
Grevillea 'Royal Mantle'	Prostrate Grevillea	200mm pots	Plant at 1.0m centres.
Hedera helix	Ivy	140mm pots	Plant at 500mm centres.
Hymenocallis speciosa	Spider Lily	200mm pots	Plant at 600mm centres.
Mandevilla 'Red Fantasy'	Mandevilla (red)	125mm pots	Plant at 500mm centres.
Mandevilla 'White Fantasy'	Mandevilla (white)	125mm pots	Plant at 500mm centres.
Melaleuca 'Claret Tops'	Dwarf Paper Bark	200mm pots	Plant at 600mm centres.
Metrosideros spp.	New Zealand Xmas Bush	300mm pots	Plant at 1.0m centres.
Myoporum 'Yarennia'	Creeping Boobialla	140mm pots	Plant at 1.0m centres.
Nandina domestica 'Nana'	Heavenly Bamboo	200mm pots	Plant at 600mm centres.
Ophiopogon 'Stripey White'	Variegated Mondo Grass	140mm ptos	Plant at 400mm centres.
Panorea jasminoides	Bower of Beauty	125mm pots	Plant at 500mm centres.
Philodendron 'Xanadu'	Xanadu	200mm pots	Plant at 1.0m centres.
Photinia 'Red Robbin'	Red Tips	300mm pots	Plant at 1.0m centres.
Rhapis execelsa	Lady Palm	300mm pots	Plant at 1.5m centres.
Strelitzia reginae	Bird of Paradise	300mm pots	Plant at 1.0m centres
Syzygium 'Cascade'	Weeping Lilly Pilly	Viro-cell	Plant at 1.0m centres
Syzygium 'Elite'	Narrow Lilly Pilly	300mm pots	Plant at 1.0m centres.
Syzygium 'Pinnacle'	Narrow Lilly Pilly	300mm pots	Plant at 1.0m centres.
Syzygium 'Resilience'	Lilly Pilly Resilience	300mm pots	Plant at 1.0m centres.
Trachelospermum jasminoidies	Star Jasmine	125mm pots	Plant at 500mm centres.
Viburnum tinus	Sweet Viburnum	300mm pots	Plant at 1.0m centres.
Viola banksii	Native Violet	125mm pots	Plant at 300mm centres.
Zamia furfurea	Cardboard Palm	300mm pots	Plant at 800mm centres.
Zamioculcas zamiifolia	ZZ Plant	300mm pots	Plant at 1.0m centres.
Zoysia tenuifolia	Temple Grass	125mm pots	Plant at 300mm centres.

			© Butler and Webb Pty Ltd All Rights Reserved 2024. Copyright of this drawing and designs belongs to Butler and Webb Pty Ltd and may not be copied, used, sold, transferred, or reproduced in whole or in part in any form, without prior agreement with Butler and Webb Pty Ltd. Do not scale from this Drawing, use dimensions provided, if in doubt please enquire. All dimensions and levels to be verified on site.		DESIGNED: JB DRAWN: C.J CHECKED: JB	A1	DATUM: A.H.D.	Butler and Webb	Brisbane Office: P.O. Box 181 Scarborough Qls 4020 Phone: 07 3142 4834 Email: webbnet@comnet.com.au			NORTHSHORE AGED CARE for ROCKPOOL Pty Ltd		DATE: 14.08.24 DRAWING No: FIGURE 12	A Rv
A	26.06.24	ORIGINAL ISSUE		RECOMMENDED: PROJ. MAN.	APPROVED: PROJ. DIR.		MASTERPLANNING ARCHITECTURAL MODELMAKING LANDSCAPE ARCHITECTURE CULTURAL RESOURCE MANAGEMENT					CNR MACARTHUR AVE AND ANGORA RD, HAMILTON LANDSCAPE WORKS GENERAL PLANTING NOTES & INDICATIVE SCHEDULE			
Rv	DATE	REVISIONS													

INDICATIVE PLANTING SPECIES - FEATURE TREES

Plant species selected have been chosen for their robustness, colour, form, commercial availability, maintenance requirements and proven performance.

Feature Trees (all forms - large, spreading, small)

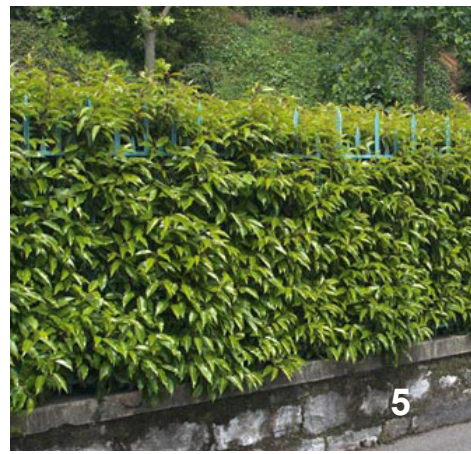
- 1 Agathis robusta (Queensland Kauri Pine) - Columnar Feature
- 2 Cupaniopsis anacardioides (Tuckeroo) - Spreading Feature
- 3 Eleocarpus eumundii (Eumundii Quandong) - Columnar Feature
- 4 Harpullia pendula (Tulipwood) - Spreading Feature
- 5 Lagerstroemia 'Natchez' (Crepe Myrtle) - Spreading Feature
- 6 Plumeria obtusa (Frangipani) - Spreading Feature
- 7 Polyalthia longifolia (Indian Mast Tree) - Columnar Feature
- 8 Waterhousis floribunda (Weeping Lilly Pilly) - Spreading Feature



Screening Shrubs

Shrubs will be utilised to provide screening to adjacent properties in addition to being a strong backdrop for smaller shrubs and groundcover plantings. Narrow varieties such as the Callistemon 'Slim' will be used in space restricted areas.

- | | |
|---------------------------|------------------------------|
| 1. Callistemon 'Slim' | (Narrow Bottlebrush) |
| 2. Metrosideros spp. | (New Zealand Xmas Bush) |
| 3. Photinia x fraseri | (Photinia) |
| 4. Syzygium 'Cascade' | (Weeping Lilly Pilly) |
| 5. Syzygium 'Resilience' | (Lilly Pilly - psyllid free) |
| 6. Viburnum odoratissimum | (Sweet Viburnum) |



INDICATIVE PLANTING SPECIES - CLUMPING PLANTS, GROUNDCOVERS & CLIMBERS

Shrubs/Groundcovers

1. *Acalpha reptans*

2. *Carrisa "Desert Star"*

3. *Clivea minata*

4. *Dianella "Silver Streak"*

5. *Dichondra "Silver Falls"*

6. *Dietes grandiflora*

7. *Gardenia spp*

8. *Gazania rigens*

9. *Hymenocallis speciosa*

10. *Nandina domestica "Blush"*

11. *Plumeria pudica*

12. *Strelizia reginae*

13. *Viola hederacea "Alba"*

14. *Zamia furfurea*

15. *Zamiocalasa zamifolia*

16. *Zoysia tenuifolia*

(Catstail)

(Natal Plum)

(Clivea)

(Variegated Flax Lily)

(Silver Dichondra)

(Spanish Iris)

(Prostrate and Shrub Gardenia)

(Gazania)

(Spider Lily)

(Heavenly Bamboo)

(Bridal Boquet)

(Bird of Paradise)

(Native Violet)

(Cardboard Palm)

(ZZ Plant)

(No Mow Grass)

Smaller shrubs and groundcovers have been chosen to provide seasonal colour, mild fragrance, strong visual forms and are commercially proven as strong, cpnistent growers.

Climbers

The climbers that are proposed have been selected for their proven growth performance, seasonal colour and changing flower form. Generally two or three varieties willbe utilised in a planting scheme to ensure constant visual interest for the residents and their guests.

1. *Mandevillea 'Alice du Pont'*

2. *Mandevillea 'Red Fantasy'*

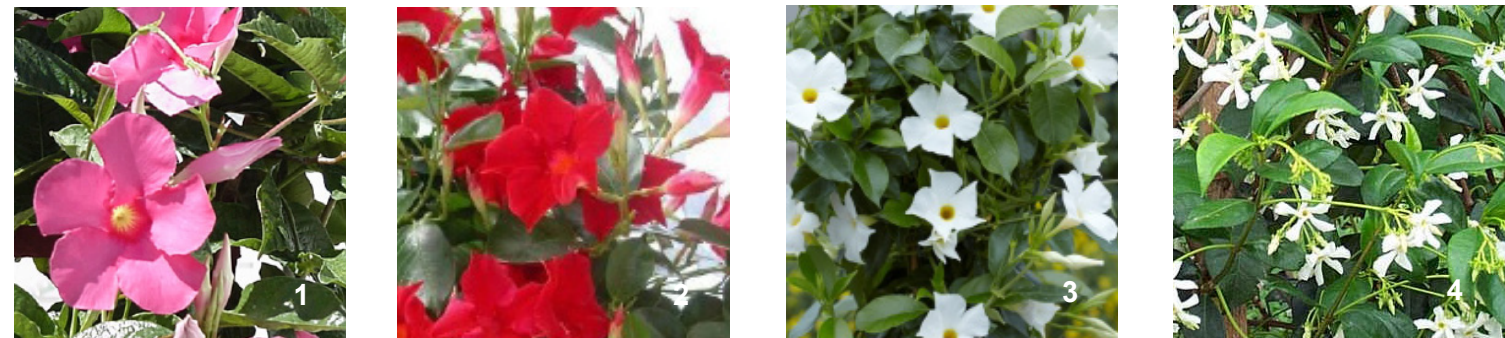
3. *Mandevillea 'White Fantasy'*

4. *Trachelospermum jasminoides*
- (Pink Mandevillea)

(Red Mandevillea)

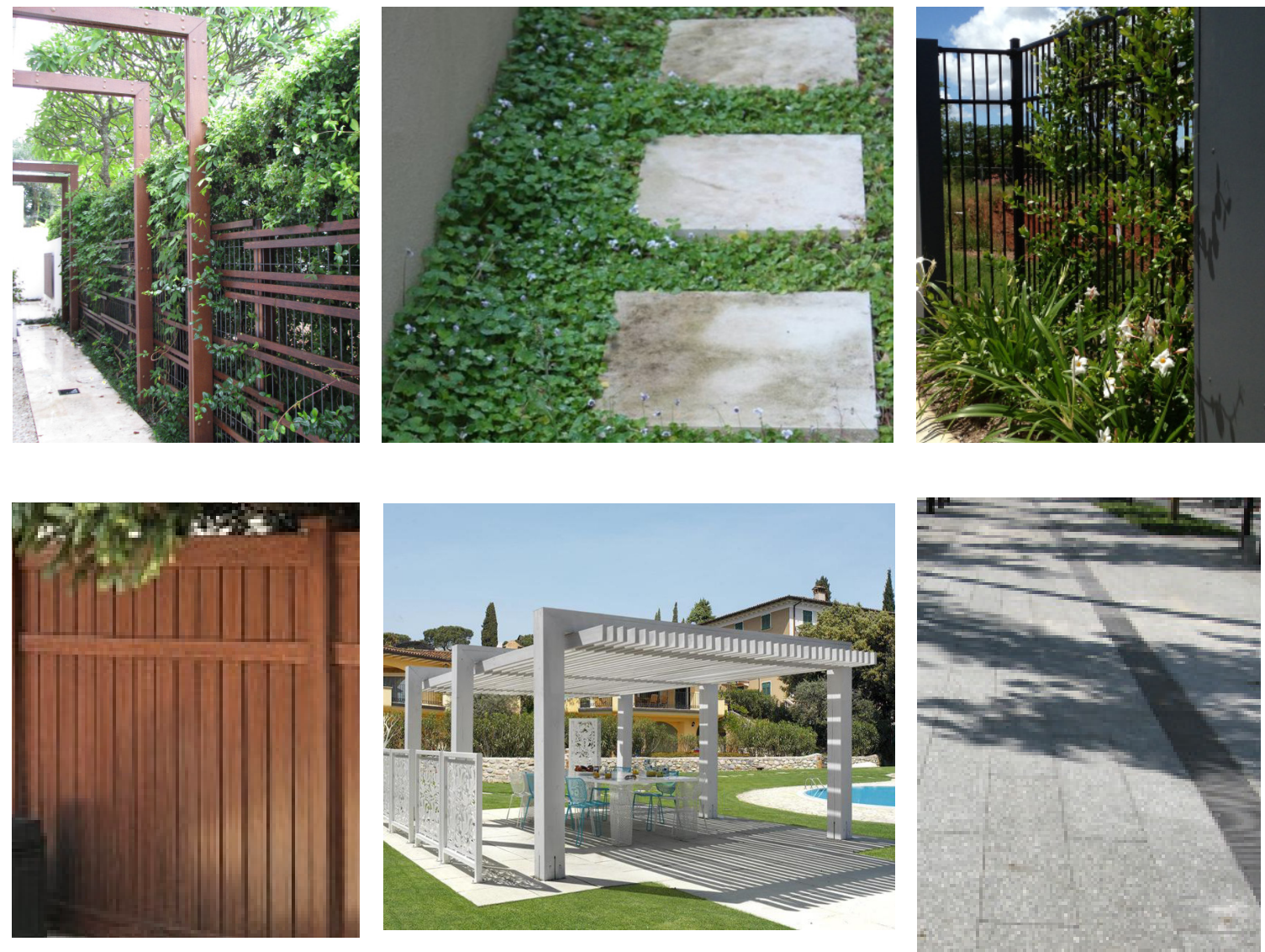
(White Mandevillea)

(Star Jasmine)



Hardscape Palette/Imagery

Natural materials are favoured such as metals, concretes and minimal use of timber as accents. Fencing types will provide for resident privacy to courtyards and semi-transparency to the street presentation. Lighting will be used to ensure security for the residents provide sufficient directed light for safe movement at all times. .



Hardscape Palette/Imagery

Several elements will be integrated throughout the project to provide visual variety, reduce the mass of building walls and provide flexible outdoor space for special events within the facility.

