

CONTENTS

LOCATION PLAN	SD-02
LANDSCAPE PLAN - GROUND LEVEL	SD-03
LANDSCAPE PLAN - LEVEL 01	SD-04
LANDSCAPE PLAN - LEVELS 02 - 08	SD-05
LANDSCAPE PLAN - LEVELS 09 - 11	SD-06
LANDSCAPE PLAN - ROOFTOP	SD-07
LANDSCAPE ANALYSIS	SD-08
FIRST NATIONS	SD-09
LANDSCAPE SECTIONS	SD-10
LANDSCAPE SECTIONS	SD-11
LANDSCAPE SECTIONS	SD-12
LANDSCAPE SECTIONS	SD-13
LANDSCAPE DETAILS - PODIUM PLANTER	SD-14
LANDSCAPE DETAILS - SOIL DEPTHS	SD-15
PLANTER MAINTENANCE PLAN	SD-16
LANDSCAPE CHARACTER	SD-17
INDICATIVE MATERIALS PALETTE	SD-18
INDICATIVE PLANTING PALETTE	SD-19

SCHEMATIC DESIGN

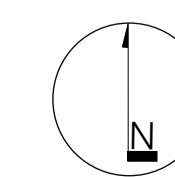
330 MacArthur Ave on part of Lot 6 on SP326594

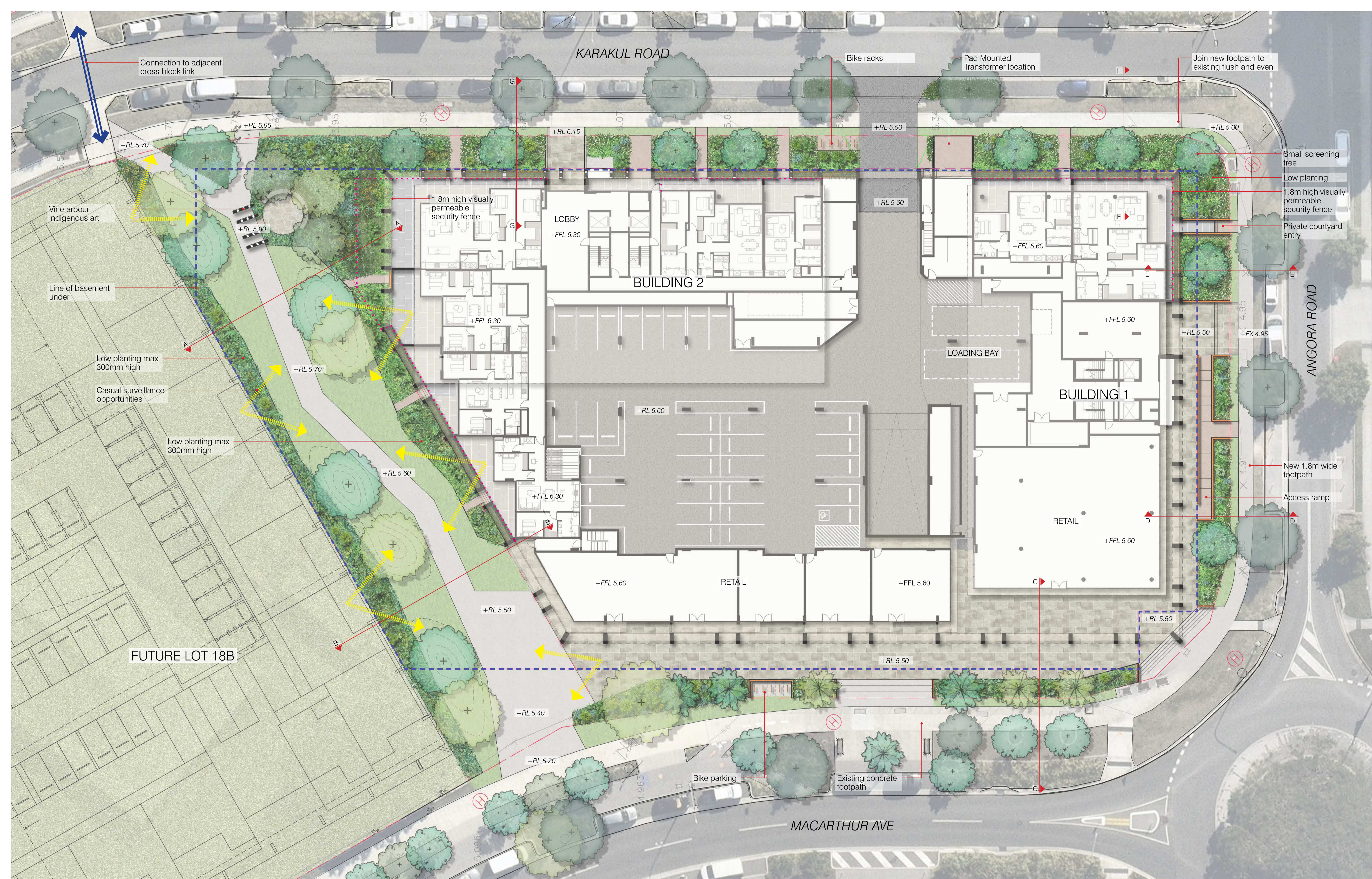


2404600 SD-01
 2024-12-16 ISSUE A
 Copyright by Dunn + Moran Landscape Architects Pty Ltd. This drawing or parts thereof may not be reproduced for any purpose without the consent of Dunn + Moran Landscape Architects.



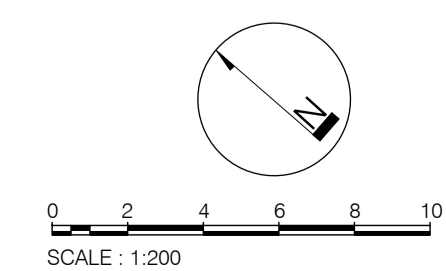
LOCATION PLAN
 SCHEMATIC DESIGN | LOT 18A HAMILTON





LANDSCAPE PLAN - GROUND LEVEL

SCHEMATIC DESIGN | LOT 18A HAMILTON

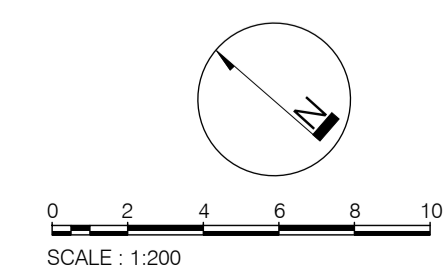


DUNN MORAN
LANDSCAPE ARCHITECTS

2404600 SD-03
2024-12-16 ISSUE A
Copyright by Dunn + Moran Landscape Architects Pty Ltd. This drawing or parts thereof may not be reproduced for any purpose without the consent of Dunn + Moran Landscape Architects.



LANDSCAPE PLAN - LEVEL 01
 SCHEMATIC DESIGN | LOT 18A HAMILTON



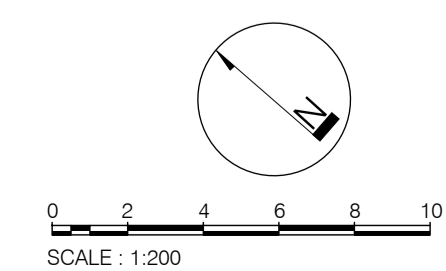
DUNN MORAN
 LANDSCAPE ARCHITECTS

2404600 SD-04
 2024-12-16 ISSUE A
 Copyright by Dunn + Moran Landscape Architects Pty Ltd. This drawing or parts thereof may not be reproduced for any purpose without the consent of Dunn + Moran Landscape Architects.



LANDSCAPE PLAN - LEVELS 02 - 08

SCHEMATIC DESIGN | LOT 18A HAMILTON



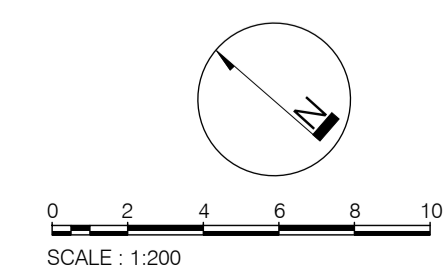
DUNN MORAN
LANDSCAPE ARCHITECTS

2404600 SD-05
2024-12-16 ISSUE A
Copyright by Dunn + Moran Landscape Architects Pty Ltd. This drawing or parts thereof may not be reproduced for any purpose without the consent of Dunn + Moran Landscape Architects.

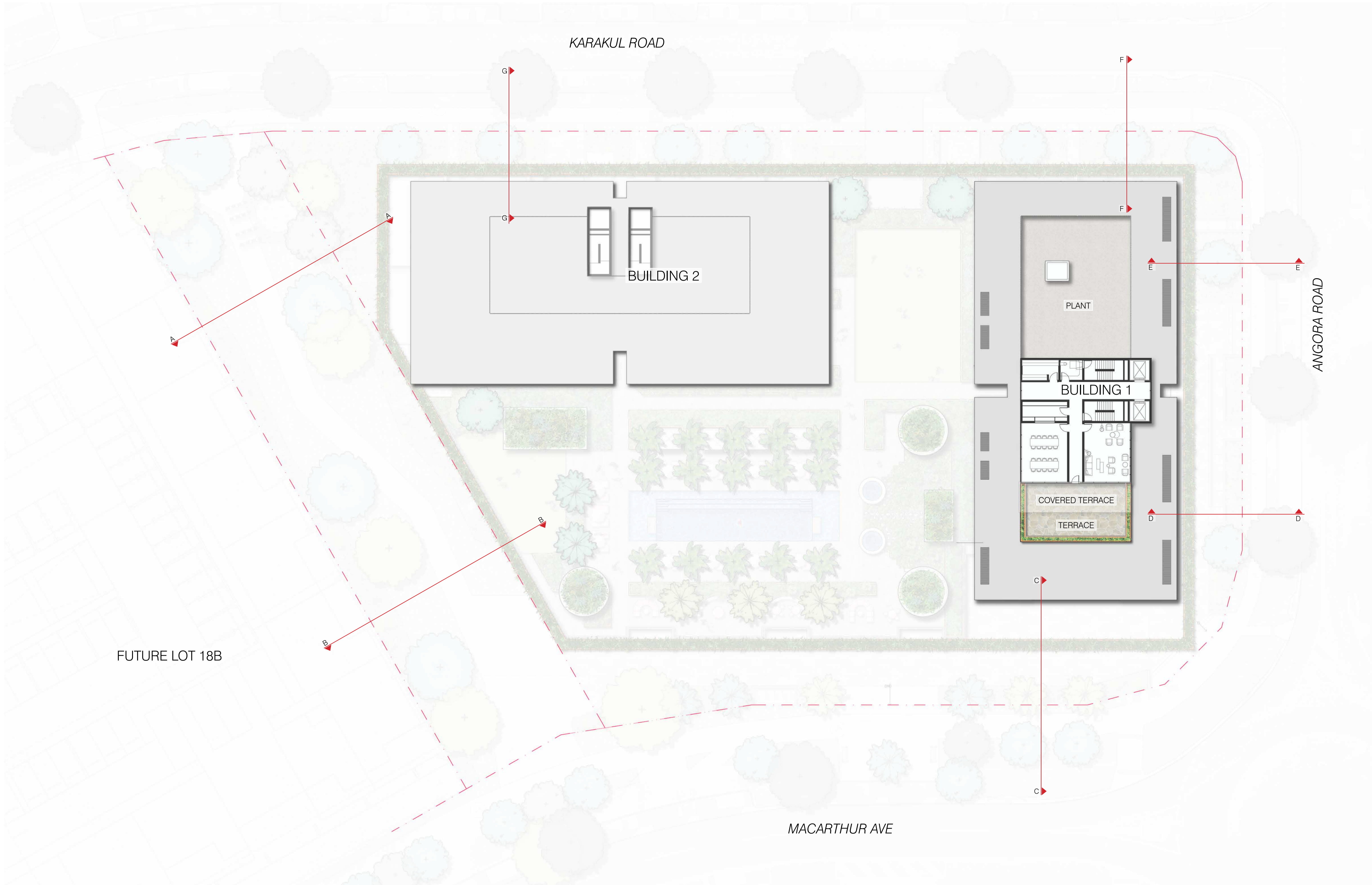


LANDSCAPE PLAN - LEVELS 09 - 11

SCHEMATIC DESIGN | LOT 18A HAMILTON

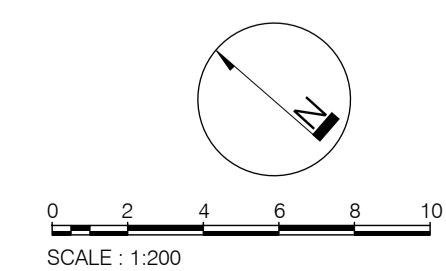


2404600 SD-06
 2024-12-16 ISSUE A
 Copyright by Dunn + Moran Landscape Architects Pty Ltd. This drawing or parts thereof may not be reproduced for any purpose without the consent of Dunn + Moran Landscape Architects.

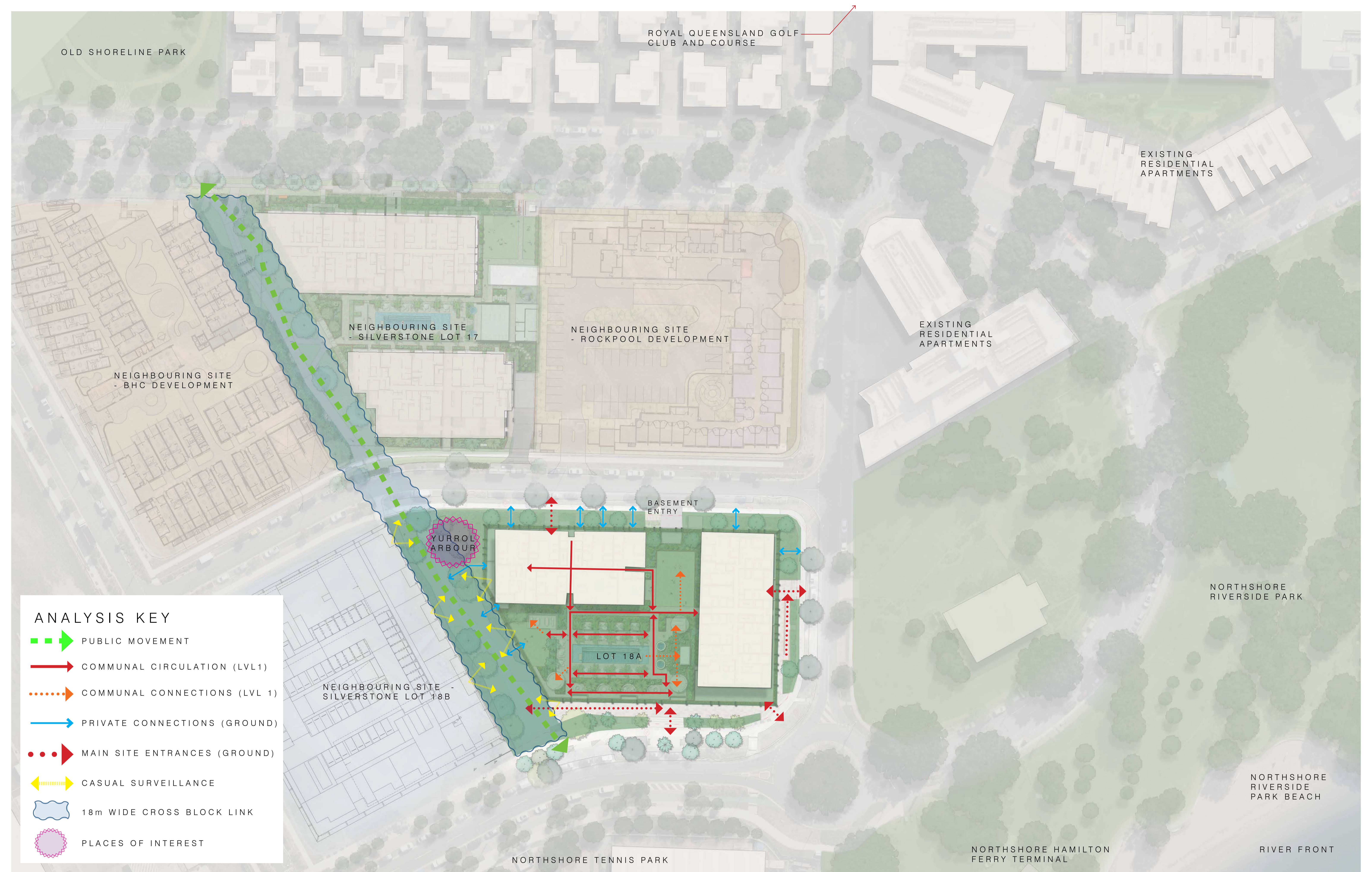


LANDSCAPE PLAN - ROOF TERRACE

SCHEMATIC DESIGN | LOT 18A HAMILTON



2404600 SD-07
 2024-12-16 ISSUE A
 Copyright by Dunn + Moran Landscape Architects Pty Ltd. This drawing or parts thereof may not be reproduced for any purpose without the consent of Dunn + Moran Landscape Architects.



ANALYSIS KEY

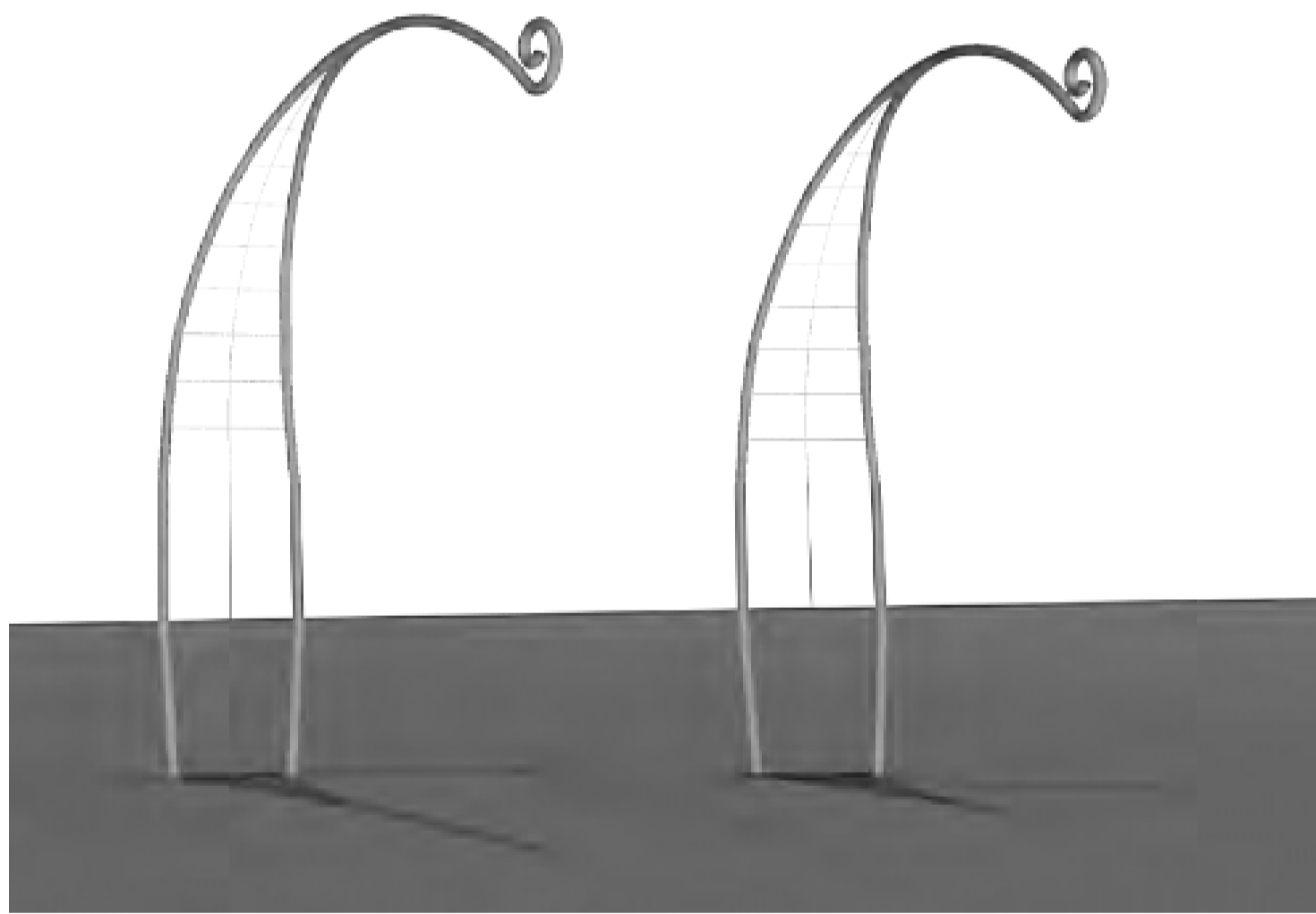
- - - - - ➔ PUBLIC MOVEMENT
- — — — — ➔ COMMUNAL CIRCULATION (LVL1)
- ➔ COMMUNAL CONNECTIONS (LVL 1)
- — — — — ➔ PRIVATE CONNECTIONS (GROUND)
- ▶ MAIN SITE ENTRANCES (GROUND)
- - - - - ➔ CASUAL SURVEILLANCE
- ~ ~ ~ ~ ~ 18m WIDE CROSS BLOCK LINK
- ⊗ PLACES OF INTEREST

LANDSCAPE ANALYSIS

SCHEMATIC DESIGN | LOT 18A HAMILTON



Yurrol Vine (*Flagellaria indica*)

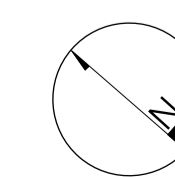


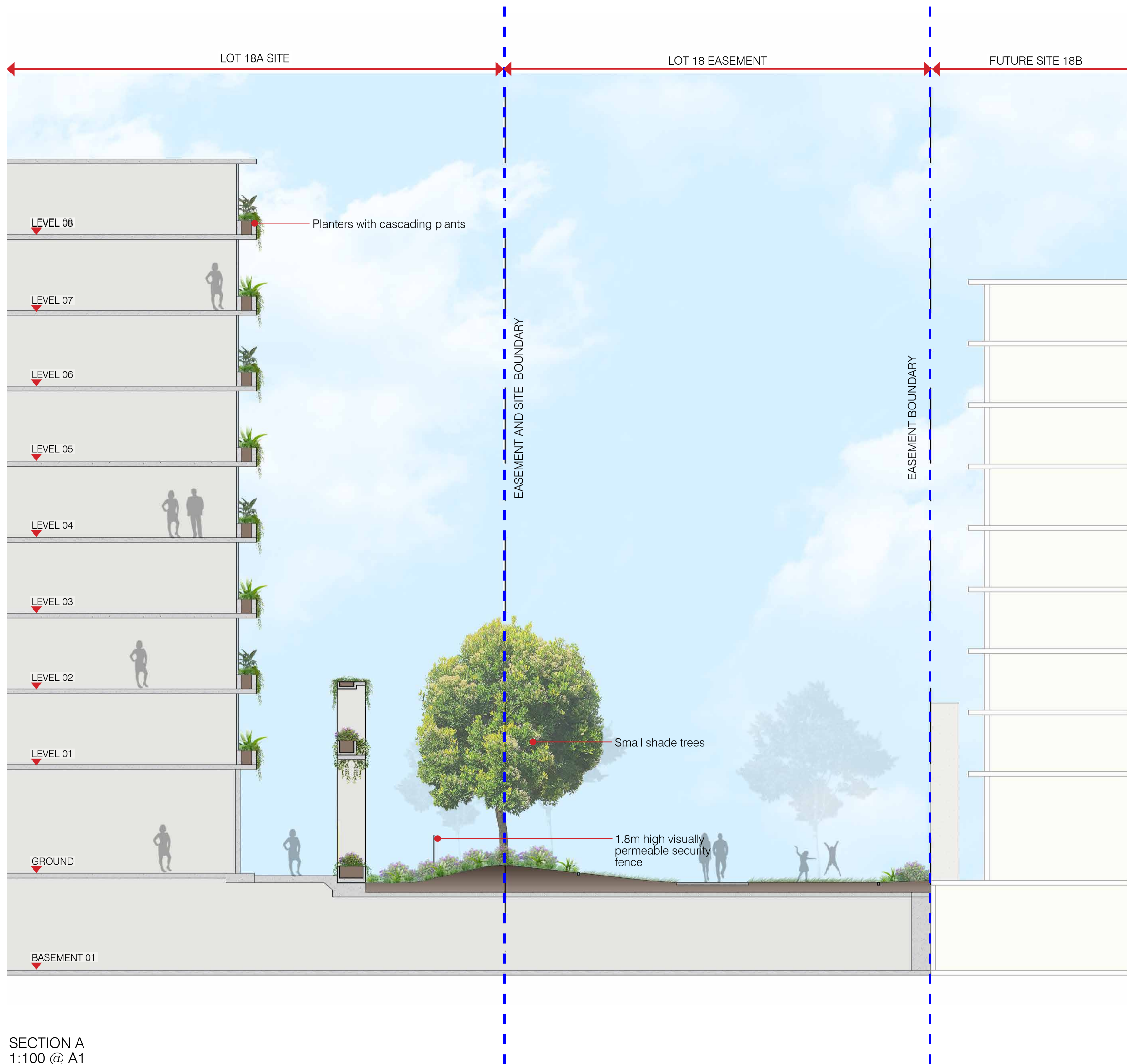
Yurrol arbors
 - 2 x freestanding formed steel tube expressing the Yurrol vine leaf shape
 - Provides support for the Yurrol (*Flagellaria indica*)

- Song Grove with 3 x endemic feature tree species
- Low native groundcover planting
- Sandstone block terraced seating wall
- Interpretive sign location with digital link to indigenous song
- Yurrol vine arbours



N.T.S

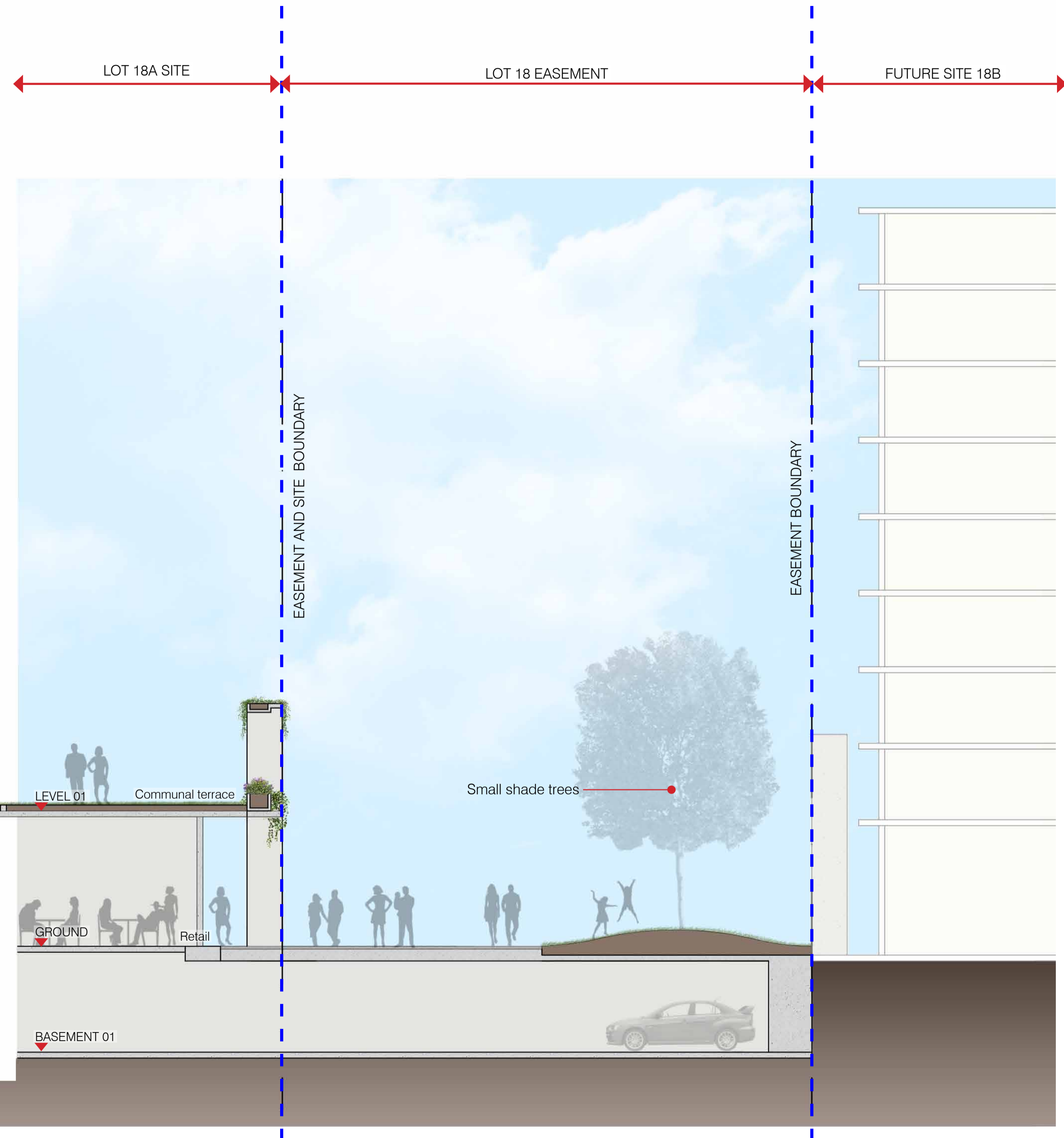




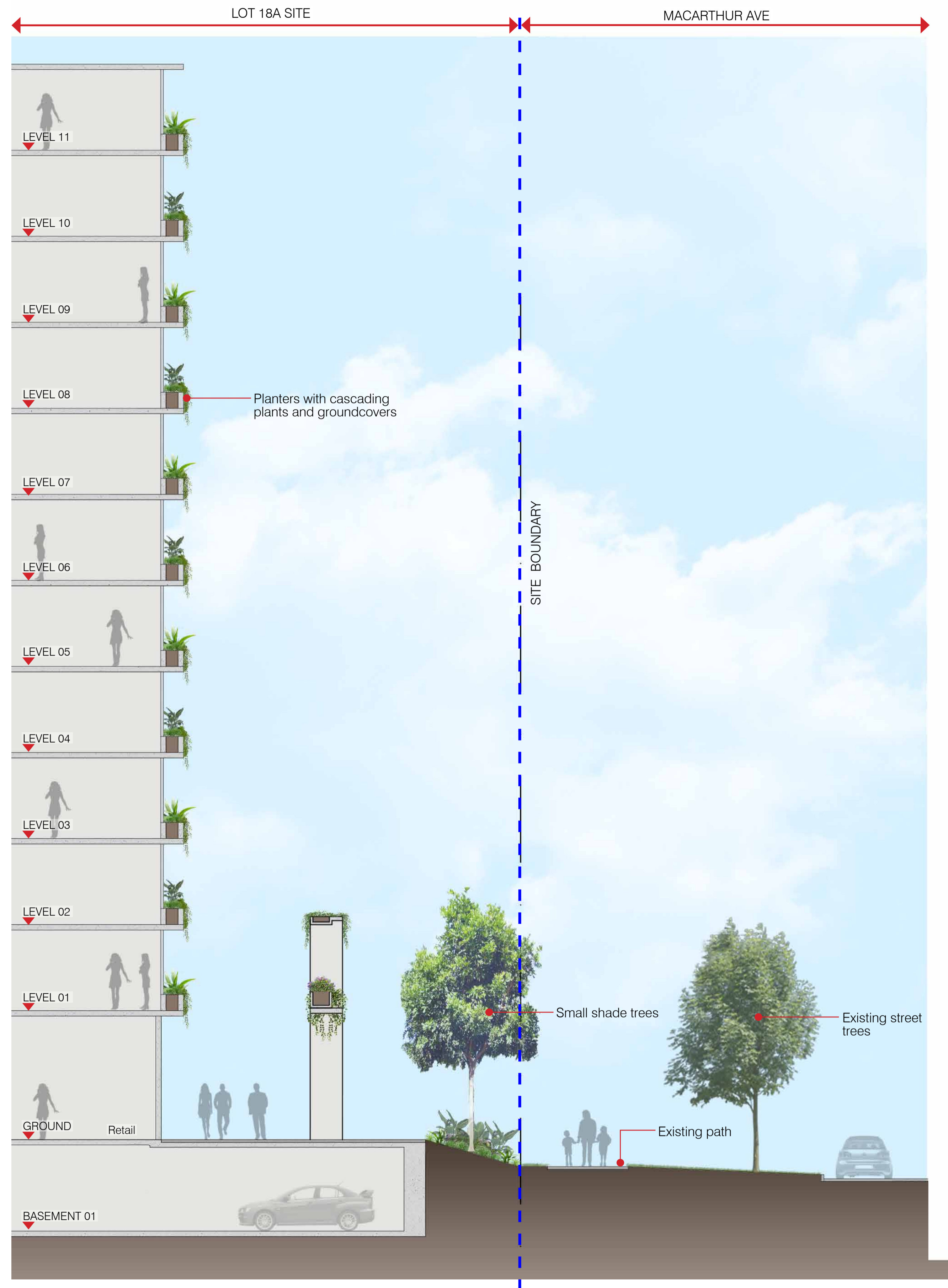
SECTION A
1:100 @ A1

LANDSCAPE SECTIONS

SCHEMATIC DESIGN | LOT 18A HAMILTON



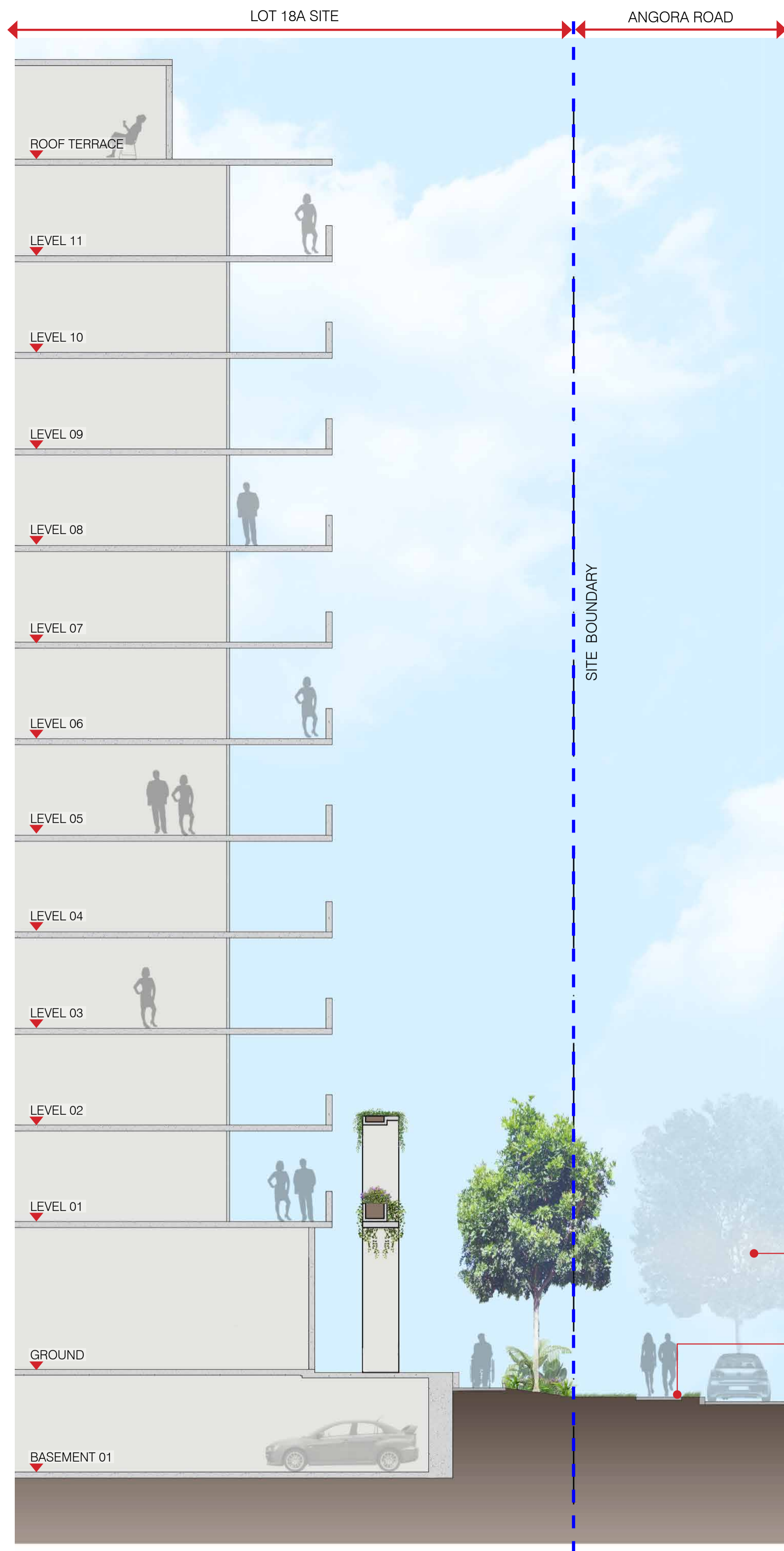
SECTION B
1:100 @ A1



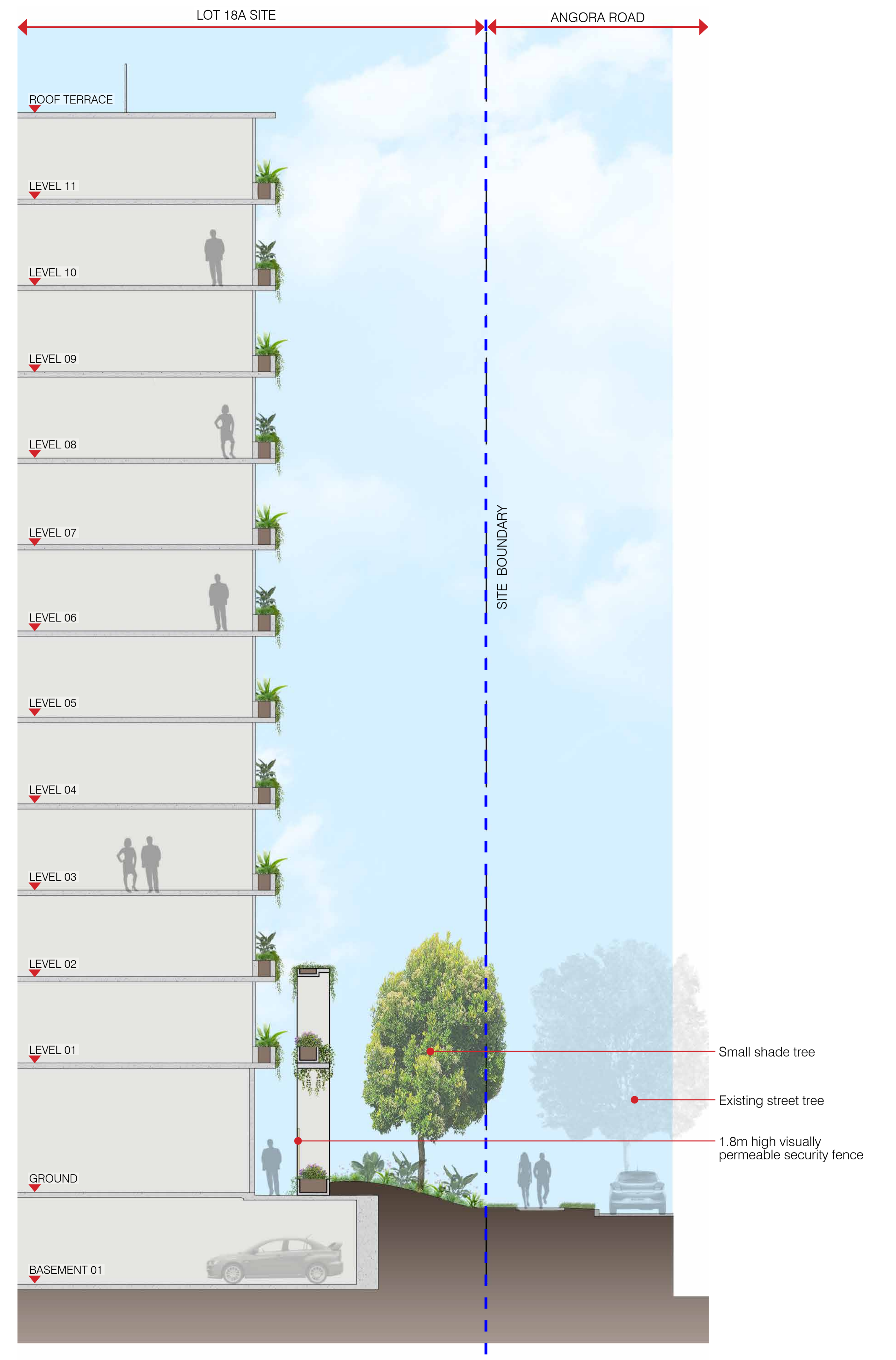
SECTION C
1:100 @ A1

LANDSCAPE SECTIONS

SCHEMATIC DESIGN | LOT 18A HAMILTON



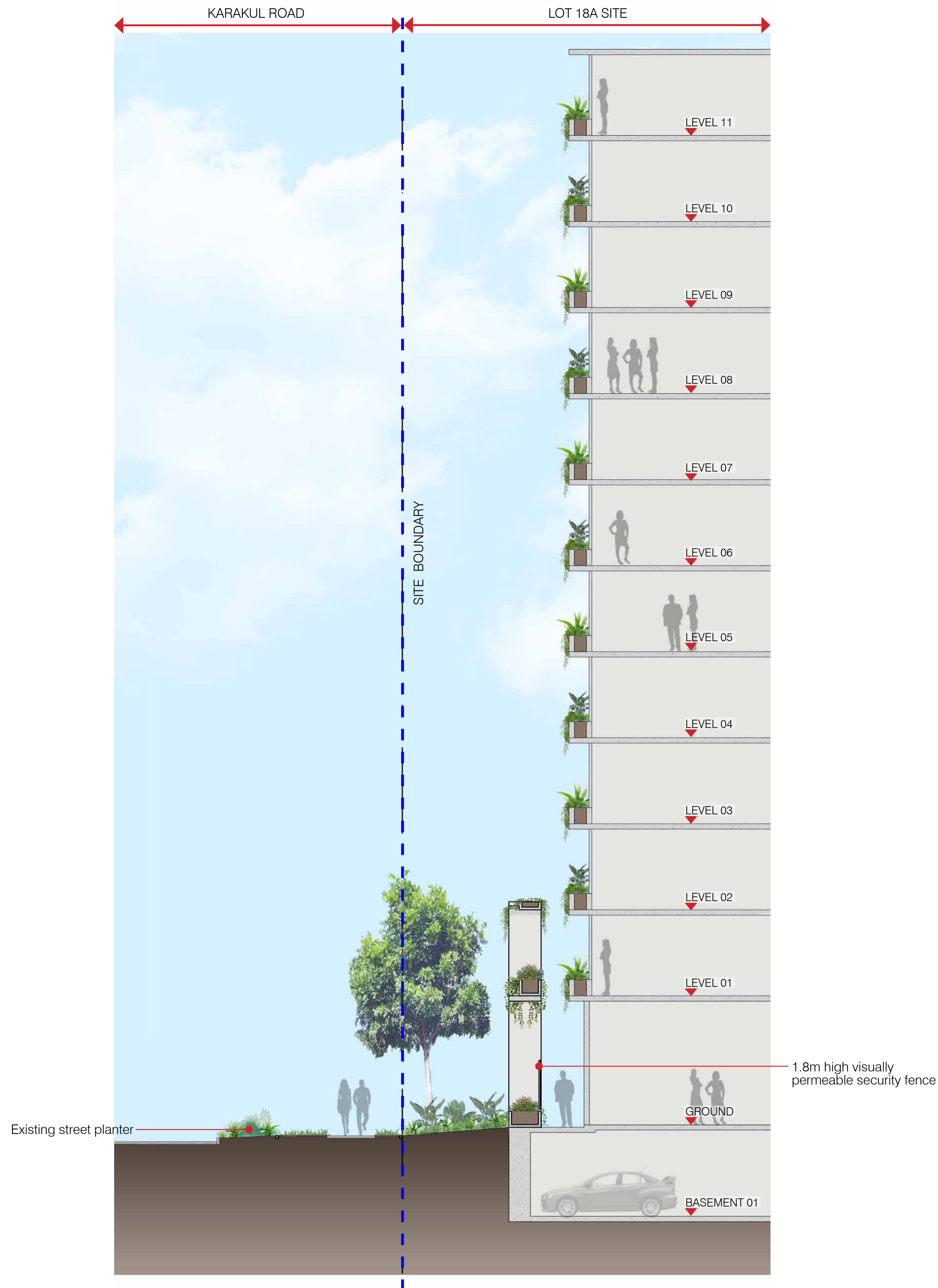
SECTION D
1:100 @ A1



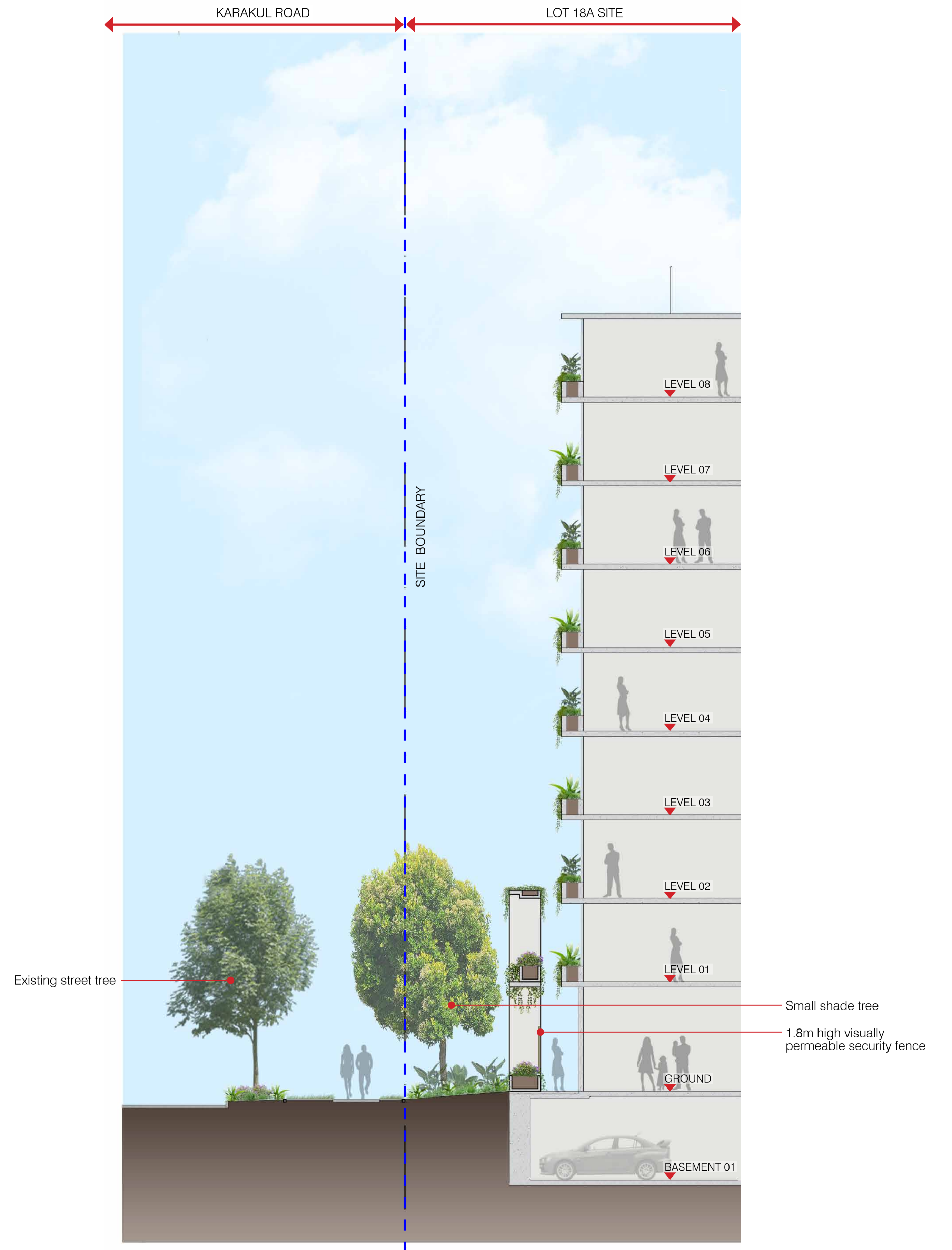
SECTION E
1:100 @ A1

LANDSCAPE SECTIONS

SCHEMATIC DESIGN | LOT 18A HAMILTON



SECTION F
1:100 @ A1



SECTION G
1:100 @ A1

LANDSCAPE SECTIONS

SCHEMATIC DESIGN | LOT 18A HAMILTON

30% SAND
BASED

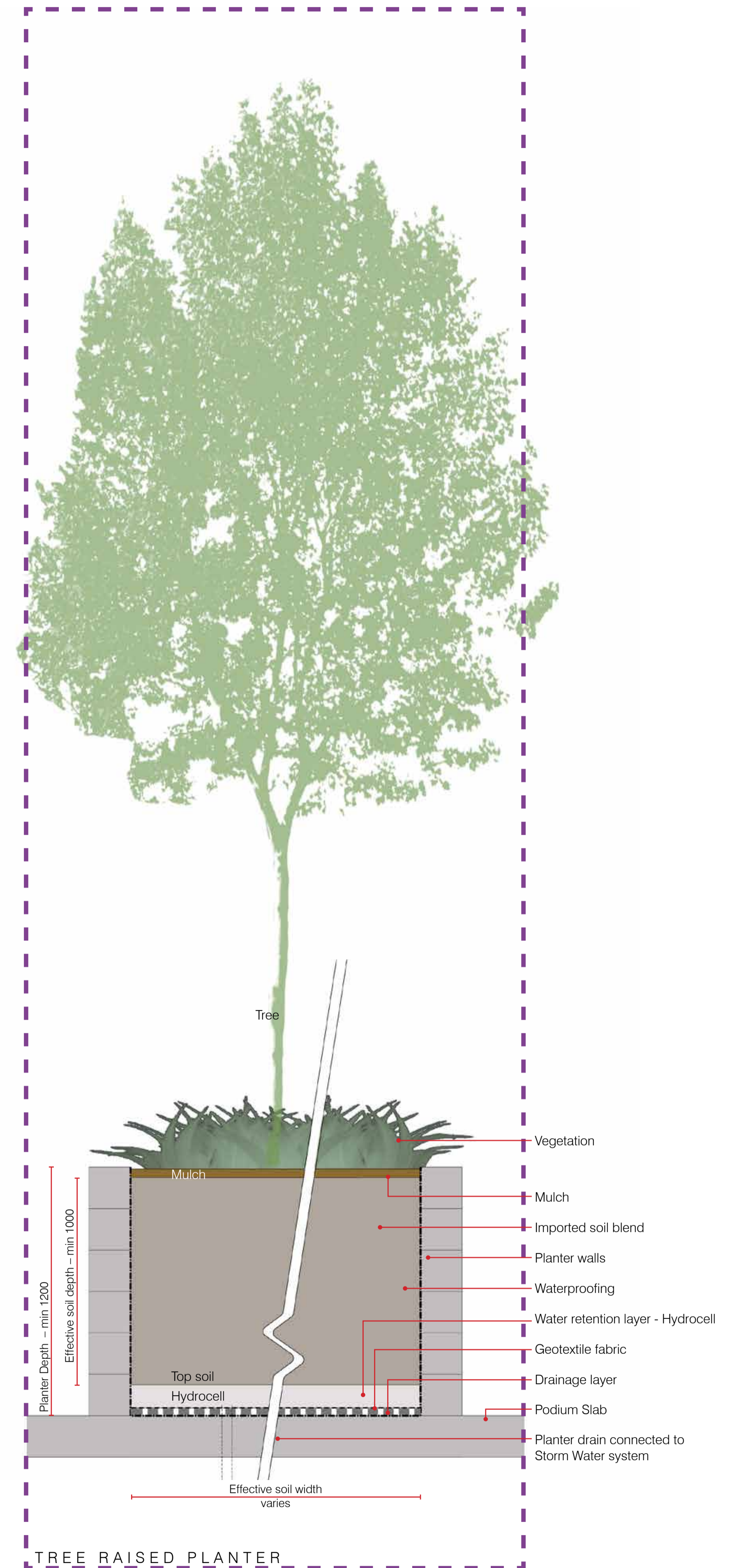
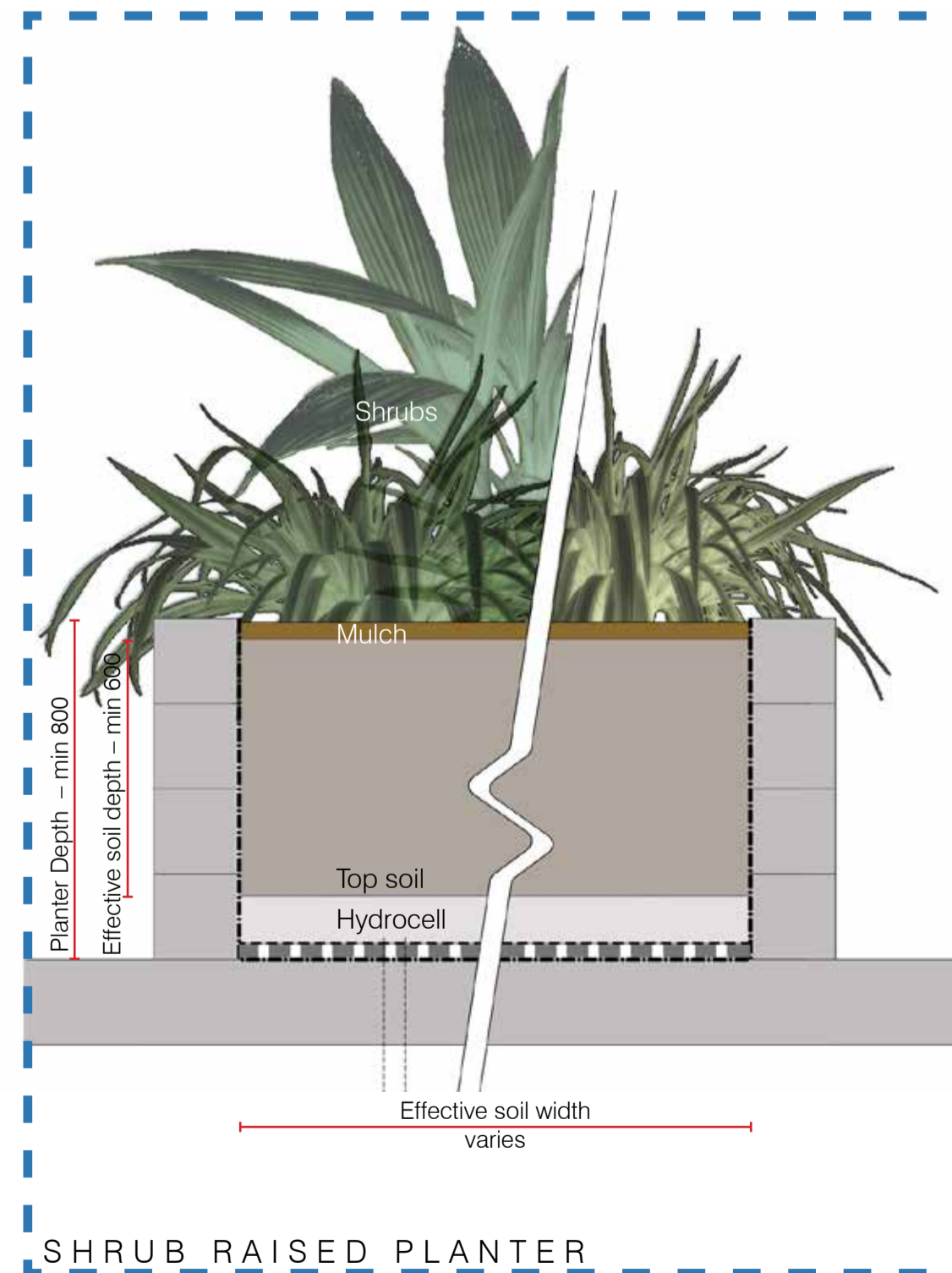
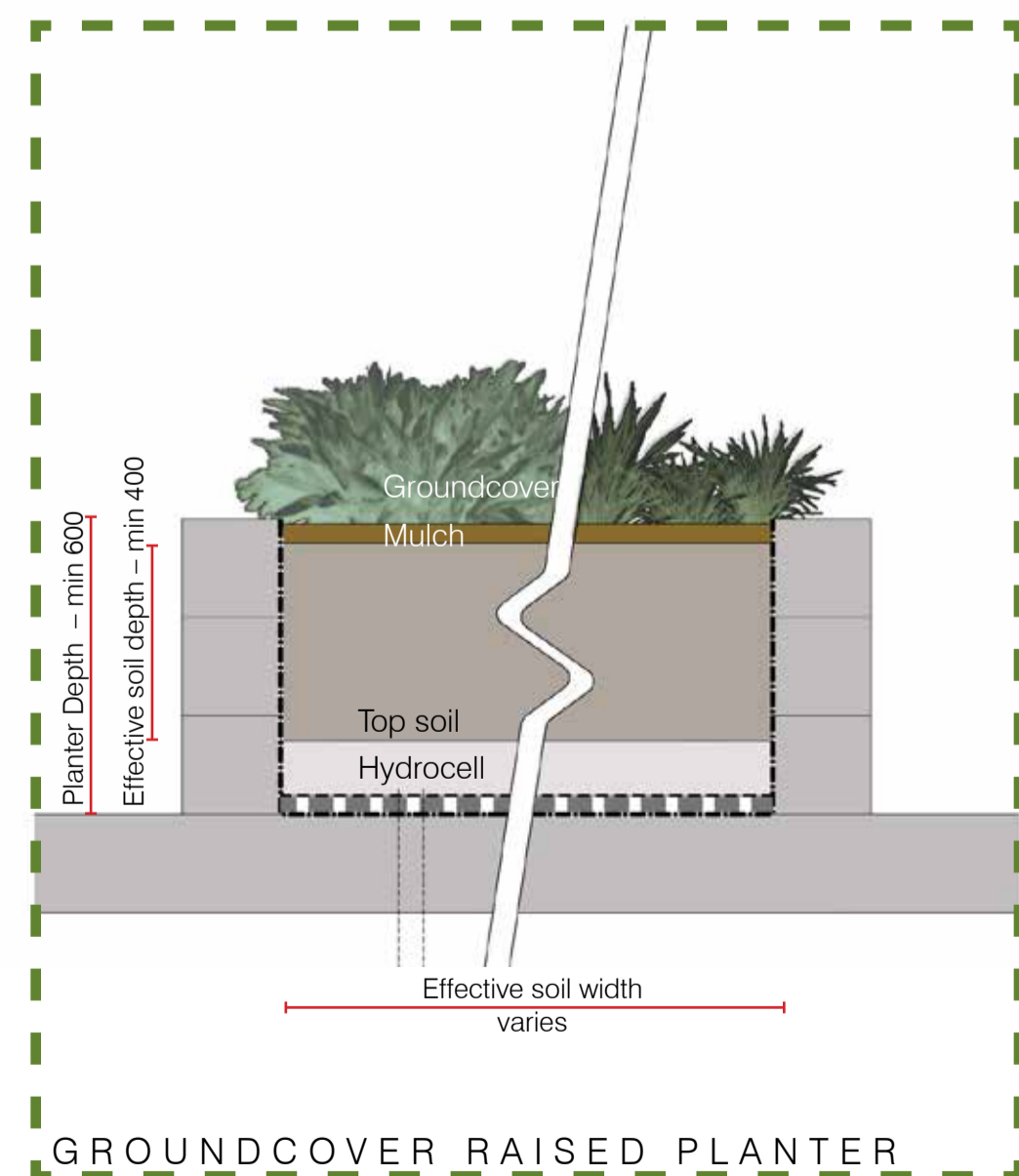
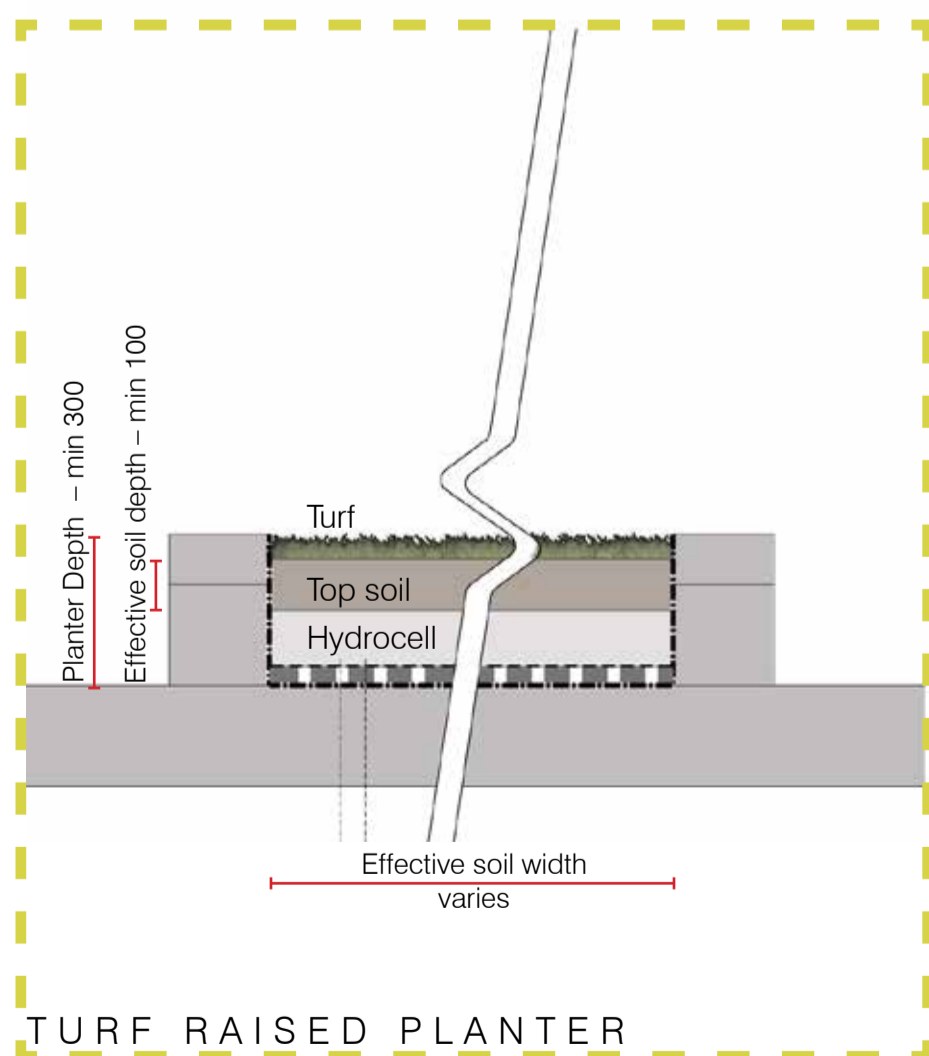
LIGHT WEIGHT ROOF GARDEN GUIDELINES

Fytogreen Australia's lightweight roof garden system works to the following depth and saturated weight guidelines. The soil mix is 30% washed sand, 40% Hydrocell flakes, 20% 14mm scoria and 10% composted pine bark by volume. Saturated bulk density is 1150 kg/m3.

			SHRUBS	TREES To approximately 12 metres
		GROUNDCOVERS		
Soil Mix	TURF			
	100mm depth	400mm depth	600mm depth	1000mm depth
Layer 5:	115kg/sqm	460kg/sqm	690kg/sqm	1150kg/sqm
Layer 4:	Hydrocell Hardfoam RG30 - 100mm thick. 84kg/m2 (80kg water and 4kg hardfoam) Compressive strength 23, 000kg/sqm. Product life 25 years without maintenance.			
Layer 3:	Geotextile Membrane - Various types such as Bidim A14G. Thickness 2mm, weight negligible			
Layer 2:	Drainage Layer - Allow 20mm for Fytonop 20			
Layer 1:	Vapour Layer - LDPE plastic is laid as extra protection above the waterproofed roof. Thickness 0.02mm, weight negligible.			
Total Depth:	300mm	600mm	800mm	1200mm
Total Weight:	199kg/sqm	796kg/sqm	1194kg/sqm	1990kg/sqm

Please Note: The weight shown does not include plants. For example rolled turf weighs approximately 15kg/sqm

Disclaimer: This information is supplied in good faith and trials are recommended by the user to test the suitability of procedure in their climatic region. The system now covers 2.8 million square metres of roof garden in Europe since 1985 and 55,000m2 in Australia since 2002. No liability will be accepted by Fytogreen Australia or it's representatives as the the final performance based on this information.



LANDSCAPE DETAILS - PODIUM PLANTER

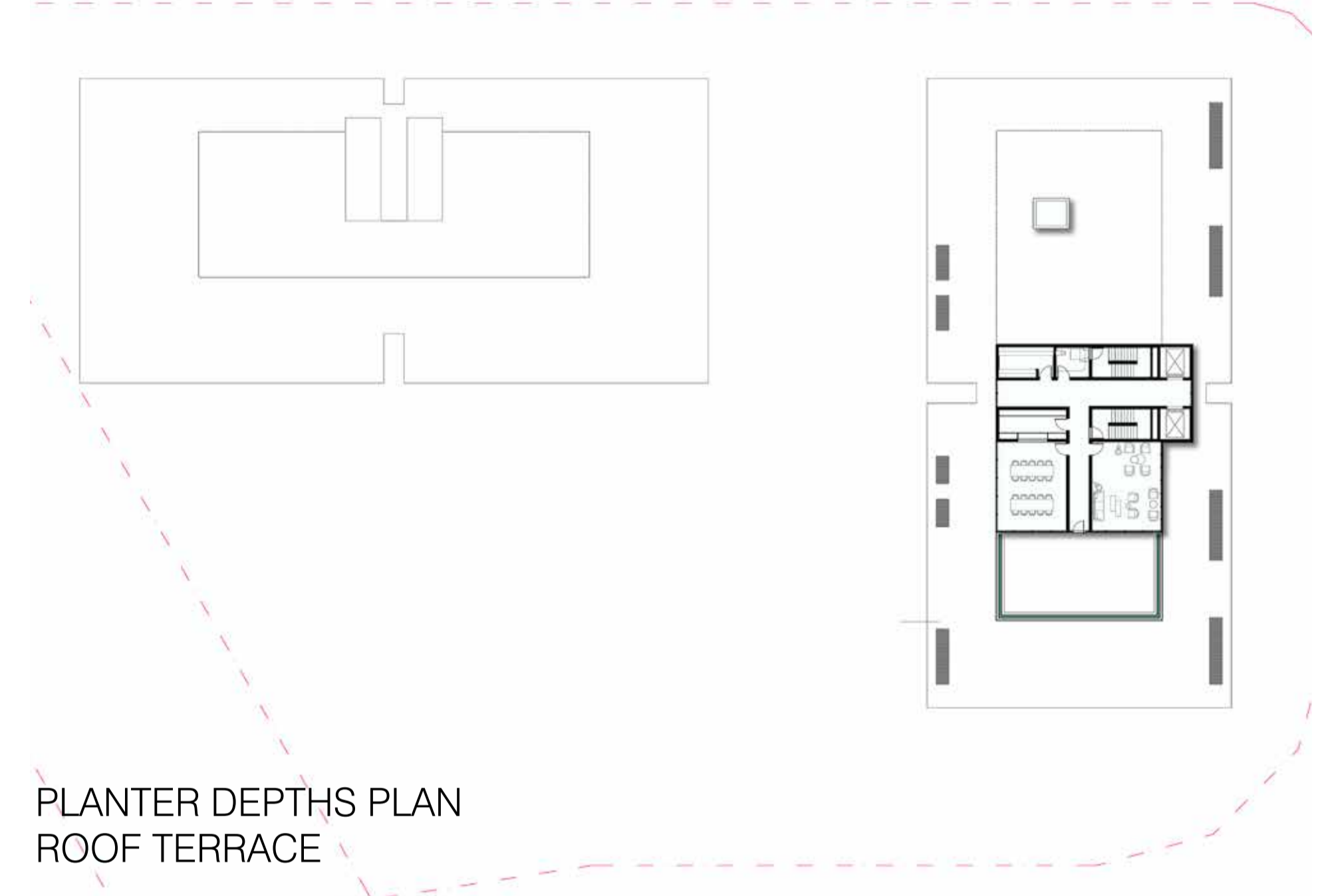
SCHEMATIC DESIGN | LOT 18A HAMILTON



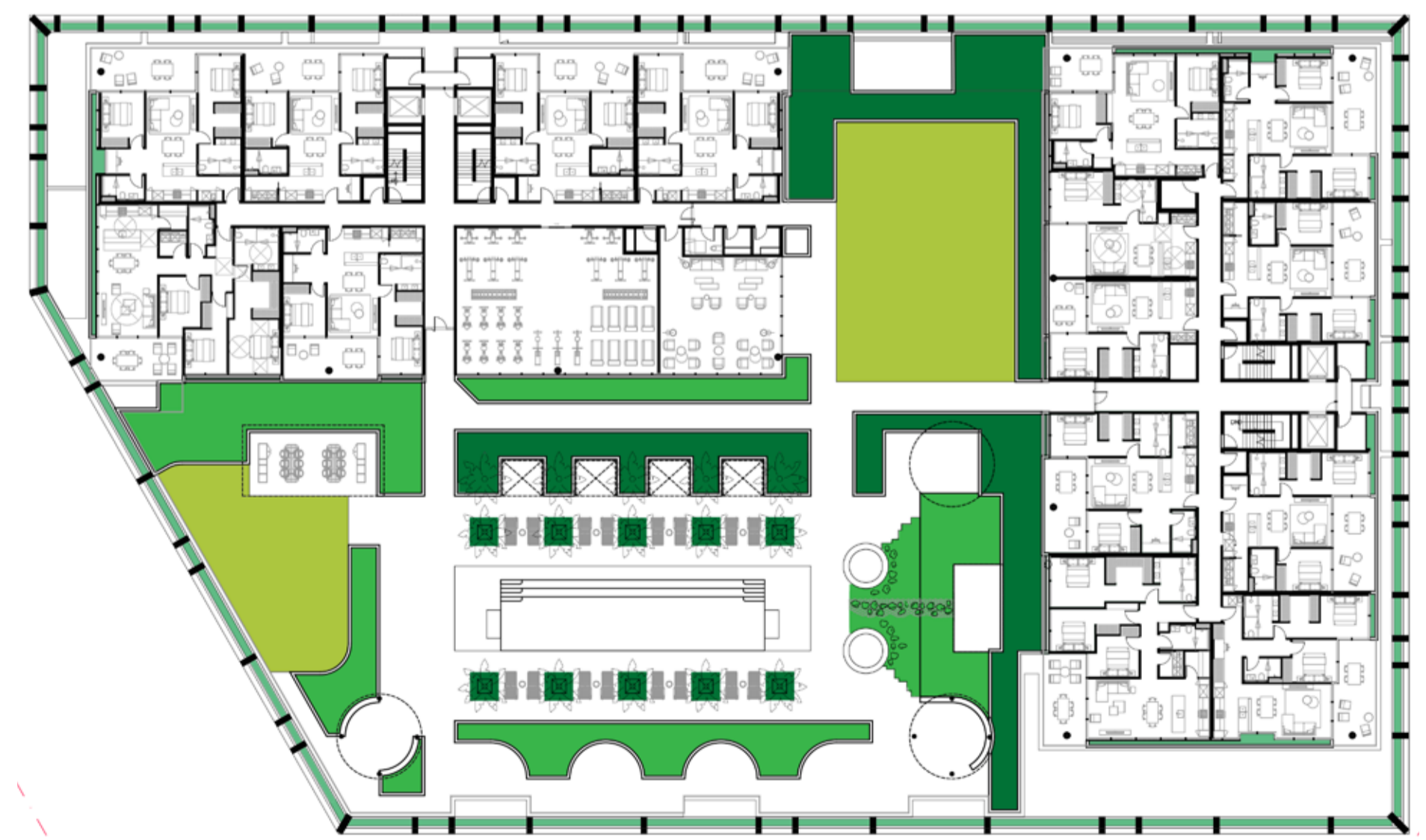
PLANTER DEPTHS PLAN
GROUND LEVEL

PLANTER DEPTH KEY

- PODIUM PLANTER 200 to 400mm
- PODIUM PLANTER 450 to 600mm
- PODIUM PLANTER 600 to 900mm
- PODIUM PLANTER 1000 to 1200mm
- DEEP PLANTING AREAS



PLANTER DEPTHS PLAN
ROOF TERRACE



PLANTER DEPTHS PLAN
LEVEL 01



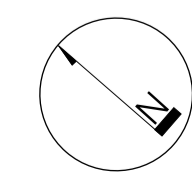
PLANTER DEPTHS PLAN
LEVELS 02 - 08



PLANTER DEPTHS PLAN
LEVELS 09 - 11

LANDSCAPE DETAILS - SOIL DEPTHS

SCHEMATIC DESIGN | LOT 18A HAMILTON



2404600 SD-015
2024-12-16 ISSUE A
Copyright by Dunn + Moran Landscape Architects Pty Ltd. This drawing or parts thereof may not be reproduced for any purpose without the consent of Dunn + Moran Landscape Architects.

PLANTER MAINTENANCE

- On Grade planter access + maintenance
- - - Balcony planter accessed via adjacent balcony "On Grade"
- - - Access planter at level with horizontal cable/harness safety system

ACCESS NOTES :

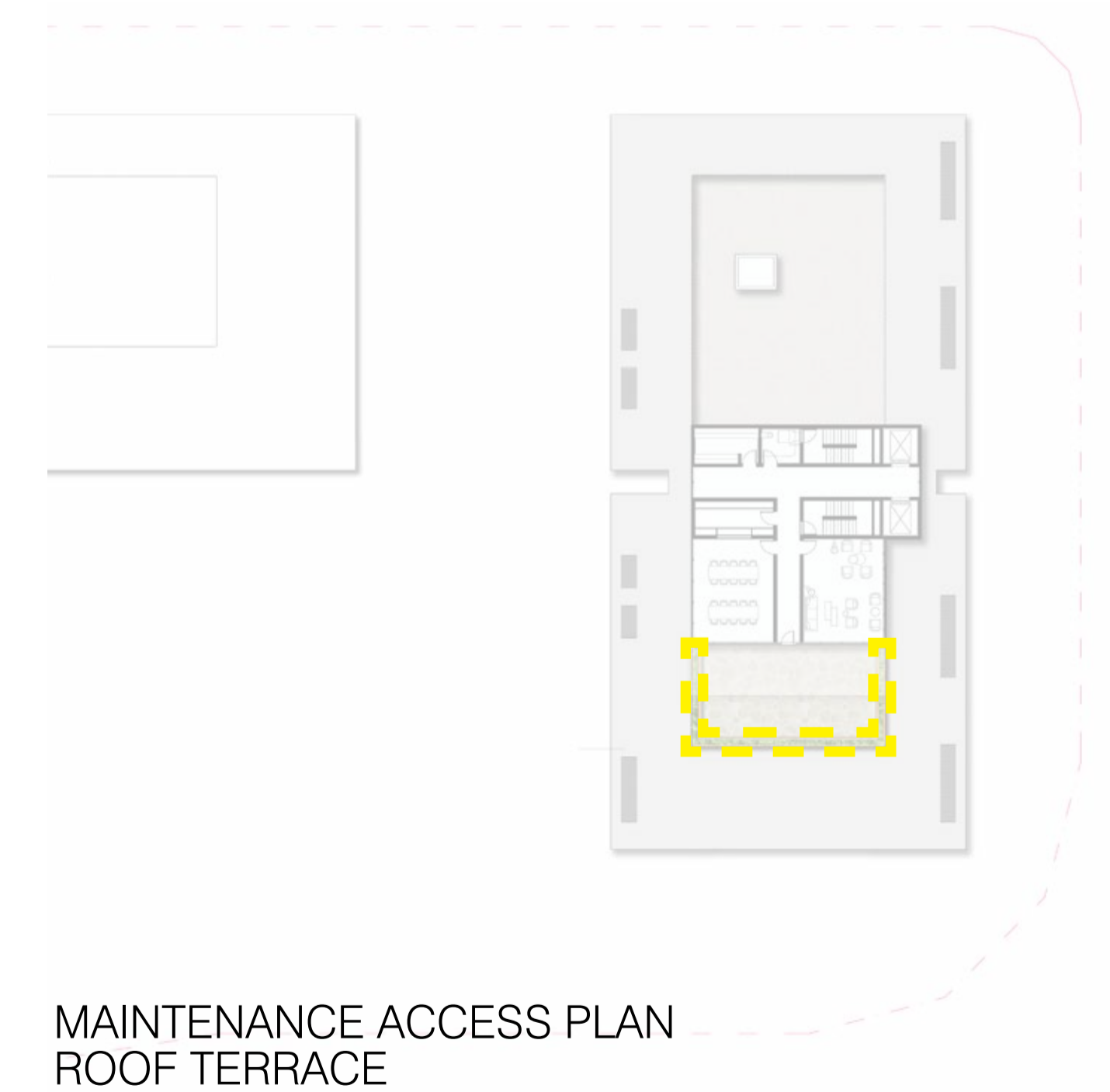
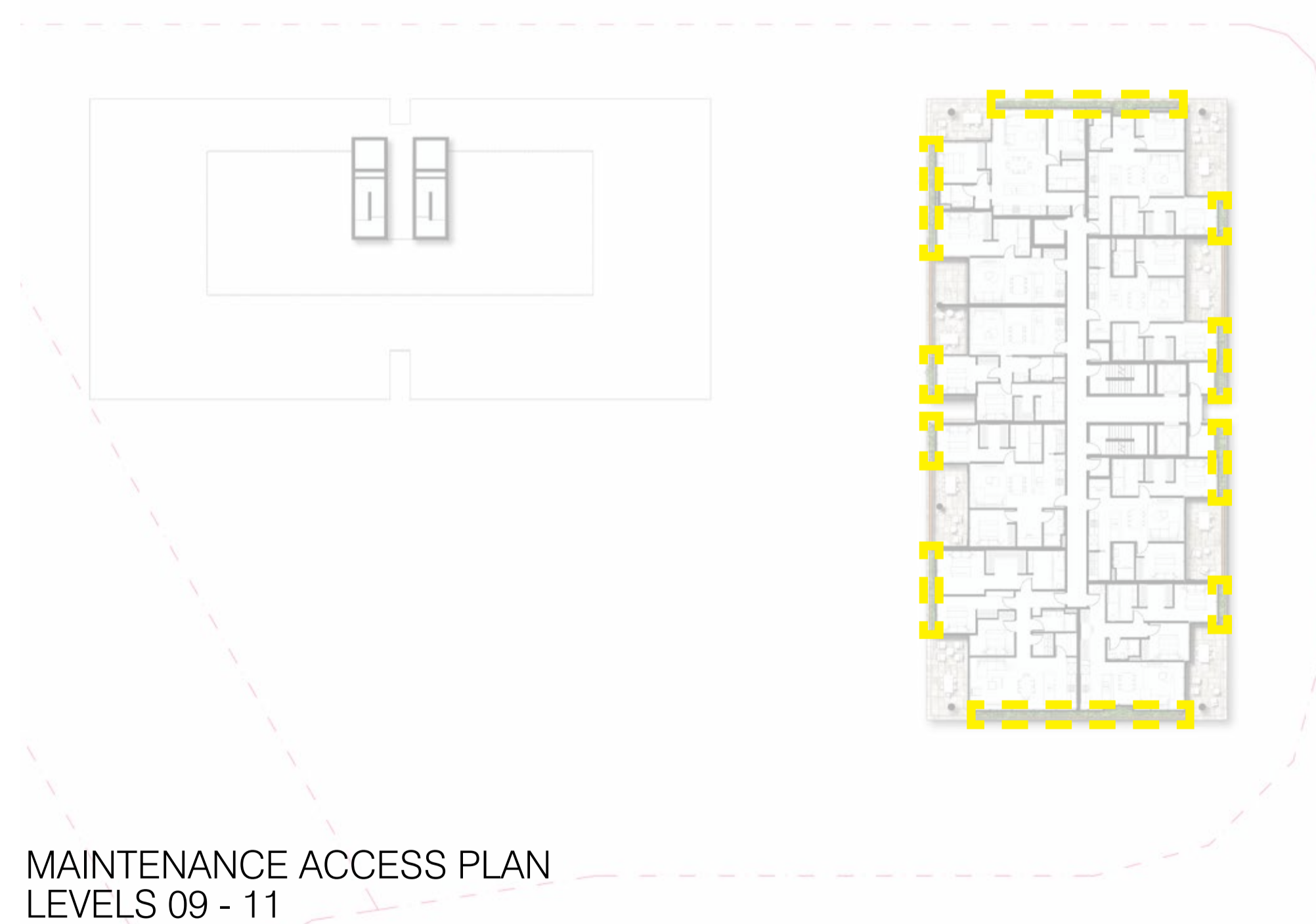
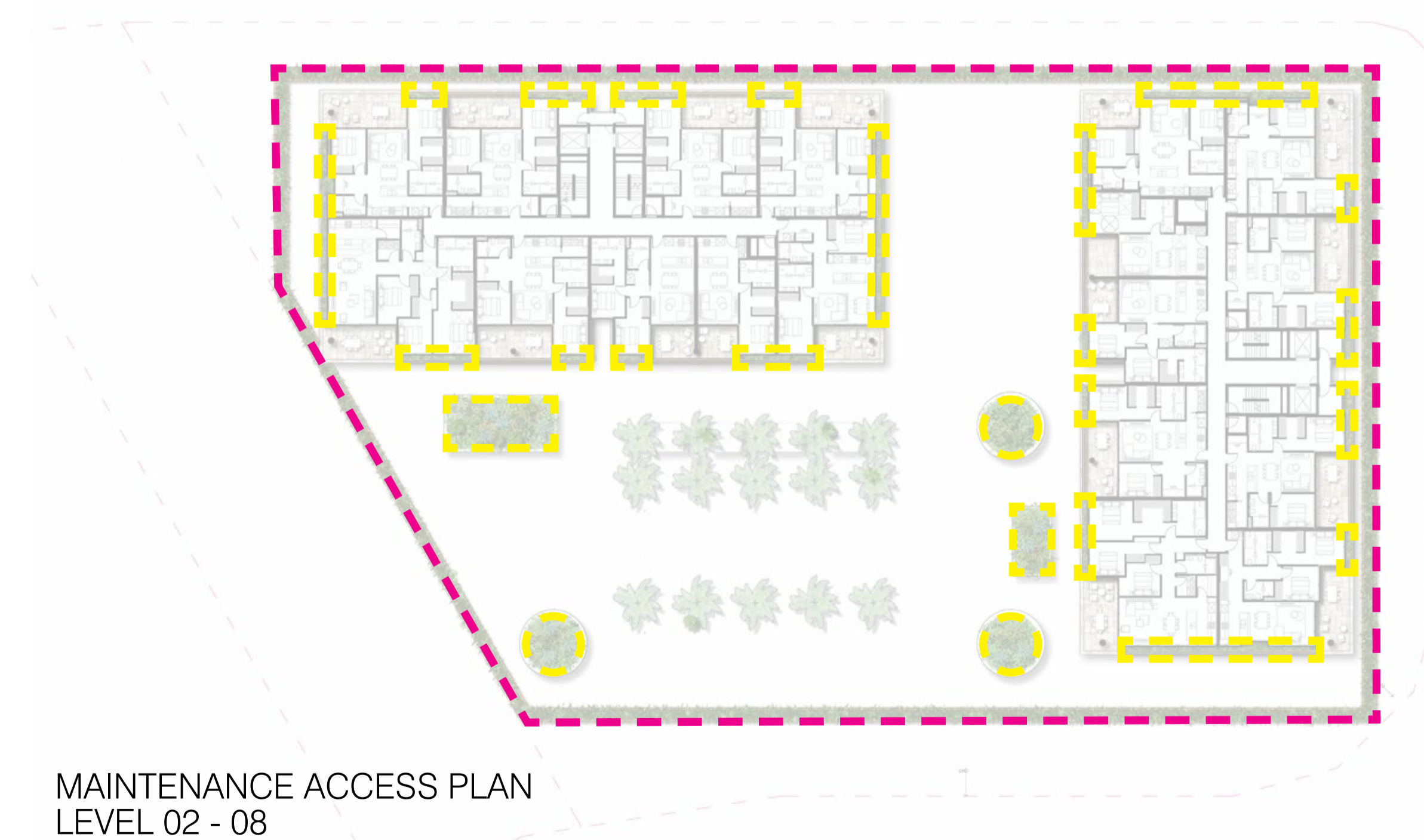
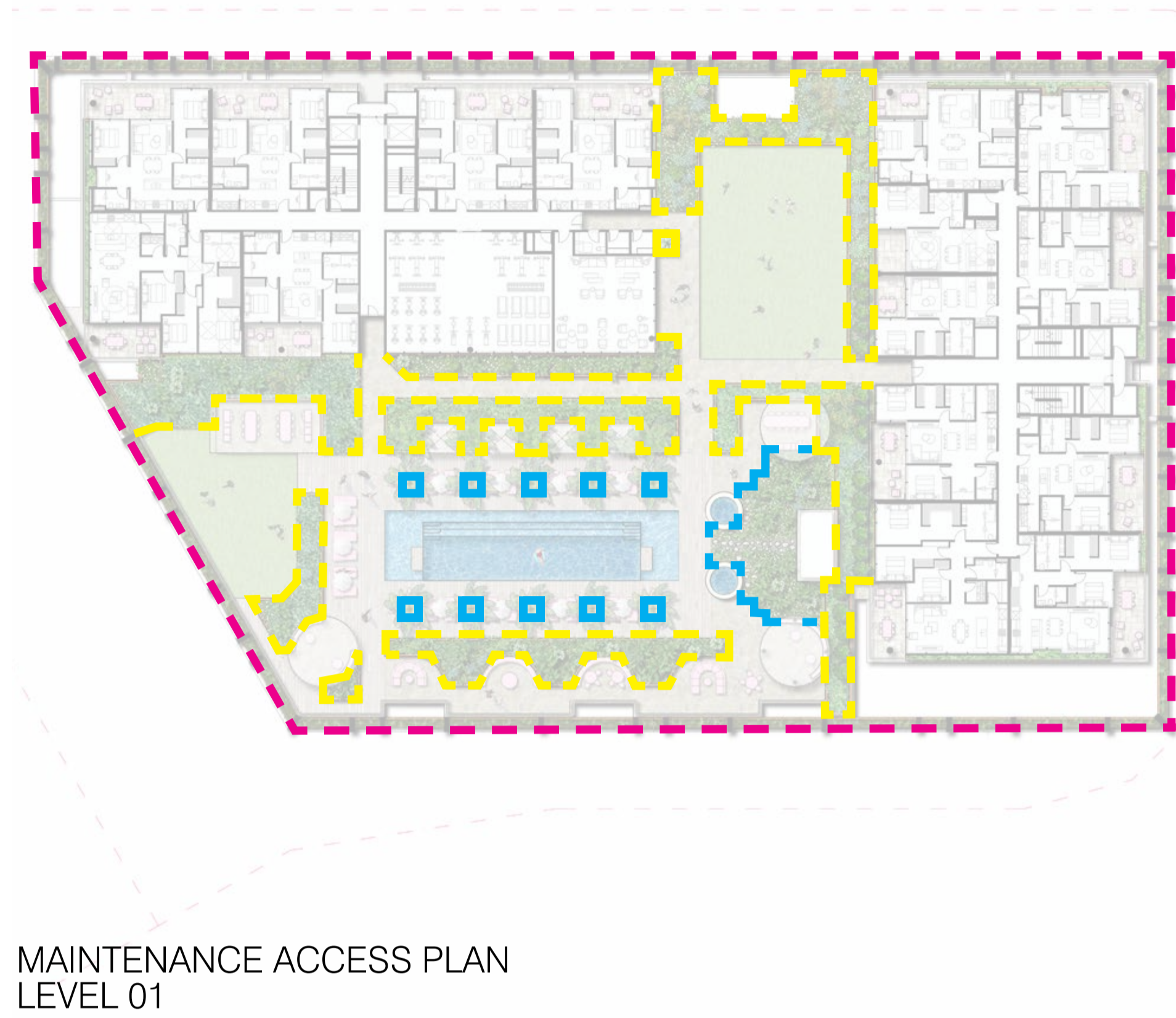
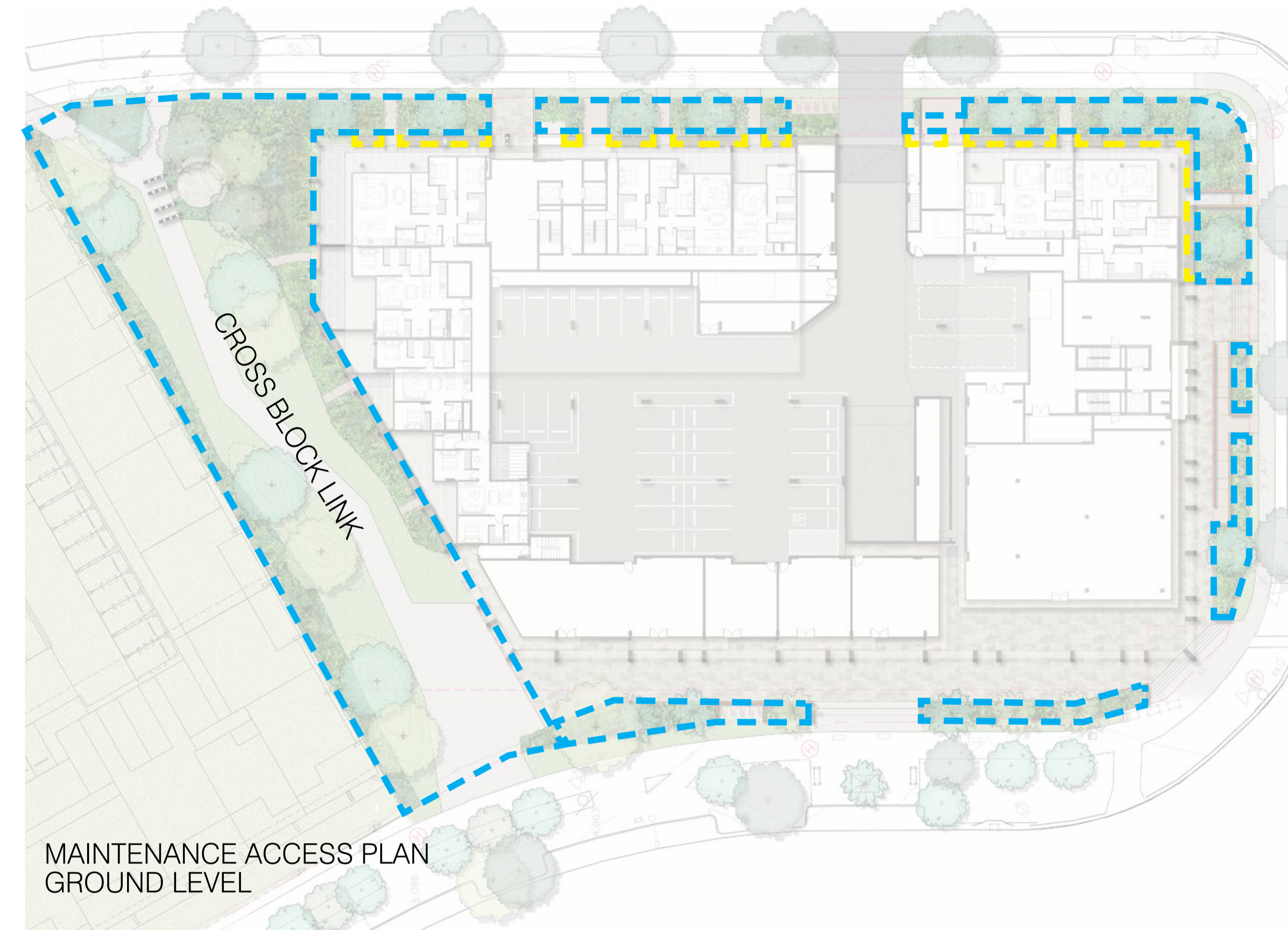
- All garden beds noted as 'ON GRADE ACCESS' to be maintained from adjacent 'on grade' pathways, terraces and garden beds within safely reached areas.
- All garden beds maintained 'off grade' will be maintained from appropriate anchor connections, safely accessed from on grade areas or abseil system.
- All balcony plants in units will be maintained by Body Corporate with access through private units.

MAINTENANCE NOTES :

- Maintenance to all planters shown on plans are to be managed through Body Corporate controls.
- Garden maintenance schedule is to be arranged between Body Corporate and the Garden Maintenance Team to ensure gardens are kept to required standards.
- Maintenance schedule may include these tasks:
 - Debris and litter control
 - Weeding
 - Plant pruning
 - Plant replacement
 - Vine leader training and trellis inspection
 - Pest and disease inspection
 - Fertilising
 - Mulch inspection and topping up
 - Soil level control
 - Soil testing
 - Irrigation inspection and testing

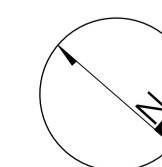
IRRIGATION NOTES :

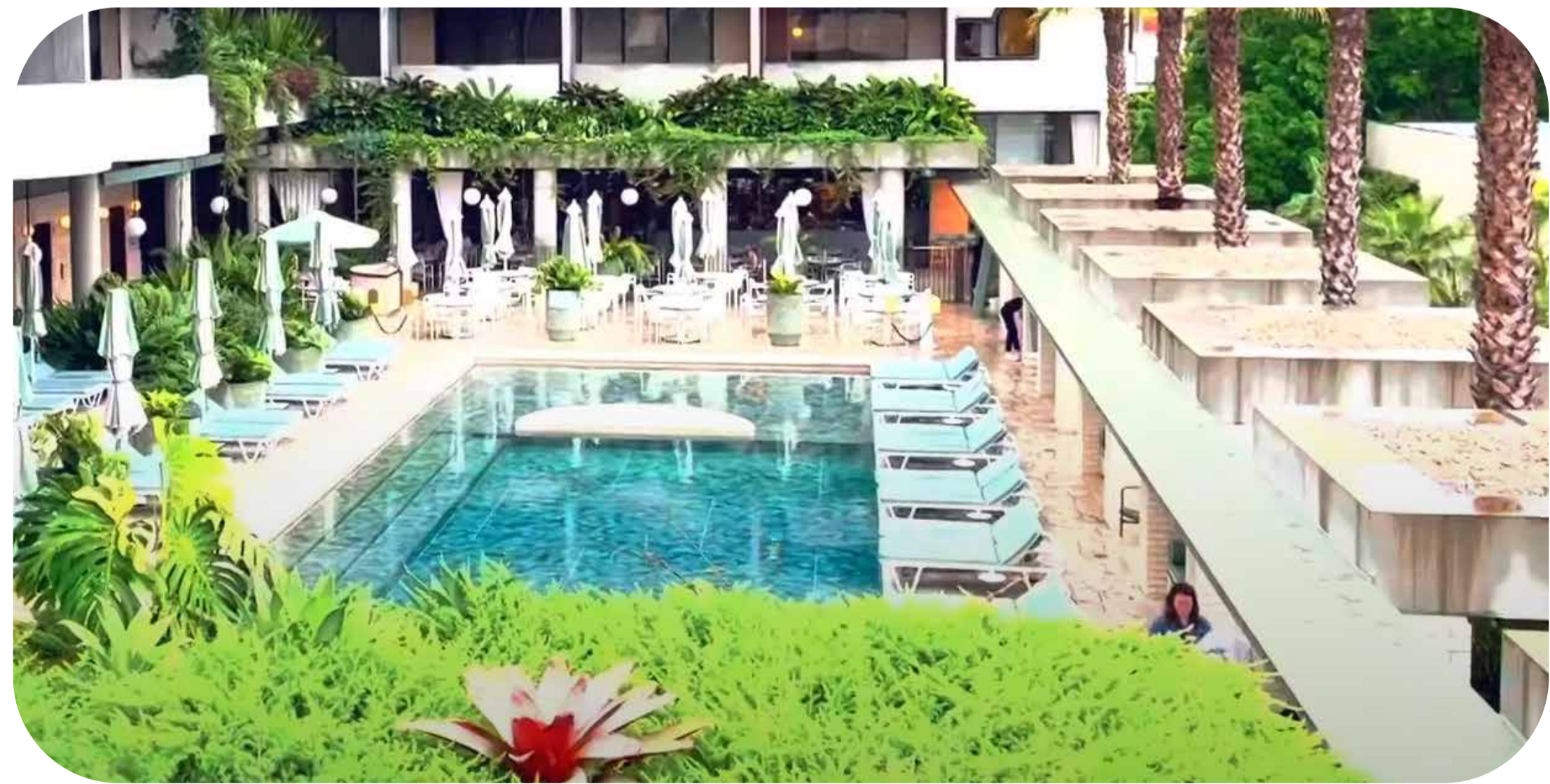
- GENERAL: Design, supply and install a fully automatic irrigation system to all podium planters. The expected operable life of the system and it's fittings is a minimum of 10 years.
- APPROVALS: All necessary plumbing approvals shall be achieved prior to commencement of Irrigation works.
- RPZ: Assembly is to be provided at designated location and contractor shall be responsible for seeking all necessary local authority approvals.
- VALVES + VALVE BOXES: All solenoid and isolating valves are to be housed in trafficable valve boxes. If valve boxes are located in pavement, infill lids shall be supplied and installed with pavement to match adjacent. Valve boxes located in planting areas shall have a minimum of 200mm deep compacted clean/washed gravel at base. Valve boxes located in pavement shall have a flush finish, trip hazards are unacceptable.
- SOURCE: Source shall be harvested rainwater stored in nominated rainwater tank suitable to store up to four weeks of irrigation at a minimum.



PLANTER MAINTENANCE PLAN

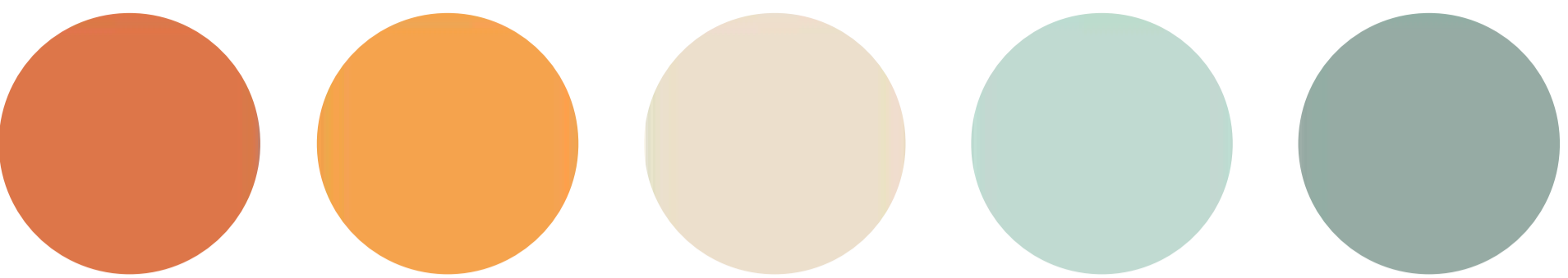
SCHEMATIC DESIGN | LOT 18A HAMILTON





INDICATIVE LANDSCAPE CHARACTER
SCHEMATIC DESIGN | LOT 18A HAMILTON

Roof Terrace, Colour Palette



Timber roof & batten panelling



Natural look stone wall



Overhead planters



Lighting



Travertine floor tile



Sandstone sitting elements [Cross Block Link]



Travertine floor tile



Freeform stone floor tile



Pool tile



Pool tile



Pool coping tile



Walling

INDICATIVE MATERIALS PALETTE

SCHEMATIC DESIGN | LOT 18A HAMILTON



ACMENA hemilampra



ATRACTOCARPUS fitzalanii



LIVISTONA australis



ELAEOCARPUS eumundii



CRASSULA ovata

INTERNAL SITE PLANTING

TREES

SPECIES	COMMON NAME
ATRACTOCARPUS fitzalanii	Native Gardenia
ELAEOCARPUS eumundi	Smooth Quandong
LIVISTONA australis	Cabbage Palm

SHRUBS

SPECIES	COMMON NAME
CASUARINA glauca 'Greenwave'	Green Wave
CRASSULA ovata	Jade plant
KALANCHOE 'Silver Spoons'	Silver Spoons
RHIPSALIS teres f. heteroclada	Mistletoe Cactus
WESTRINGIA fruticosa 'Jervis Gem'	Jervis Gem

GROUNDCOVERS

SPECIES	COMMON NAME
APTENIA cordifolia	Heartleaf Ice Plant
AUSTROMYRTUS dulcis	Midgen Berry
CARPOBROTUS 'Aussie Rambler'	Pig Face
DICHONDRA 'Emerald Falls'	Emerald Falls
GOODENIA ovata	Hop Goodenia
JUNCUS usitatus	Common Rush
MYOPORUM parvifolium	Creeping Boobialla
VIOLA hederacea	Native Violet



WESTRINGIA Jervis Gem



AUSTROMYRTUS dulcis



GOODENIA ovata



MYOPORUM parvifolium



VIOLA hederacea



CALATHEA zebrina



DIANELLA brevipedunculata



LIRIOPE Evergreen Giant



TRACHELOSPERMUM jasminoides



CRINUM pedunculatum

EASEMENT PLANTING

SPECIES	COMMON NAME
FICUS coronata	Sandpaper Fig
ELAEOCARPUS grandis	Blue Quandong
FLINDERSIA schottiana	Cudgeri
CRINUM pedunculatum	Swamp Lily
MYOPORUM ellipticum	Coastal Boobialla