

*Peg placed at all subject corners unless otherwise stated.*  
*Original information compiled from SP326594 in the Department of Resources.*  
*For Reference and Permanent Mark Tables see sheet 5.*

LandPartners Pty Ltd (ACN 118 146 008) hereby certify that the land comprised in this plan was surveyed by the corporation, by David WELLINGTON, cadastral surveyor for whose work the corporation accepts responsibility and that the plan is accurate, that the said survey was performed in accordance with the Survey and Mapping Infrastructure Act 2003 and Surveyors Act 2003 and associated Regulations and Standards and that the said survey was completed on 29/08/2022.

*[Signature]*  
Director

*[Signature]*  
Director

07/09/2022  
Date

0m 75m 150m 225m  
0 50mm 100mm 150mm State copyright reserved.

**Plan of Easements A-D**  
in Lots 7, 901, 5 & 6 on SP326594 respectively

Scale: 1:1500  
Format: STANDARD

LOCAL GOVERNMENT: BRISBANE C.C. LOCALITY: HAMILTON  
Meridian: SP326594

Survey Records: No



SP338461

**WARNING : Folded or Mutilated Plans will not be accepted.**  
**Plans may be rolled.**  
**Information may not be placed in the outer margins.**

(Dealing No.)

4. Lodged by

(Include address, phone number, email, reference, and Lodger Code)

Existing		Created		
Title Reference	Description	New Lots	Road	Secondary Interests
	Lot 7 on SP326594	—	—	Emt A
	Lot 901 on SP326594	—	—	Emt B
	Lot 5 on SP326594	—	—	Emt C
	Lot 6 on SP326594	—	—	Emt D

SP326594 must register prior to the lodgment of this plan.

**Reinstatement Report**

Sufficient original marks and original reference marks found to reinstate boundaries as per SP326594 and IS278746.

Lots	Orig

2. Orig Grant Allocation :

3. References :  
Dept File :  
Local Govt :  
Surveyor : BRMM7695.000

5. Passed & Endorsed :

By: LandPartners Pty Ltd  
Date: 08/09/2022  
Signed: *Alma PD*  
Designation: Liaison Officer

6. Building Format Plans only.

I certify that :  
\* As far as it is practical to determine, no part of the building shown on this plan encroaches onto adjoining lots or road;  
\* Part of the building shown on this plan encroaches onto adjoining \* lots and road

.....  
Cadastral Surveyor/Director \* Date  
\* delete words not required

7. Lodgement Fees :

Survey Deposit	\$	.....
Lodgement	\$	.....
.....New Titles	\$	.....
Photocopy	\$	.....
Postage	\$	.....
TOTAL	\$	.....

8. Insert Plan Number **SP338461**

SCALE 1: 200

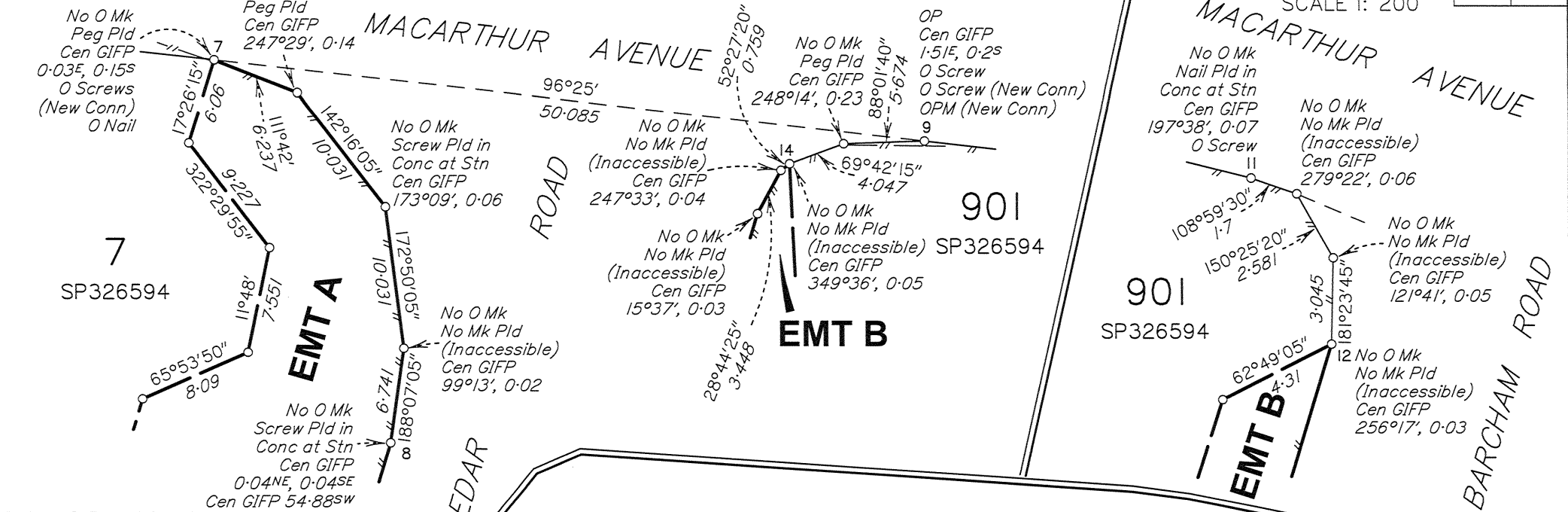


DIAGRAM A  
SCALE 1: 400

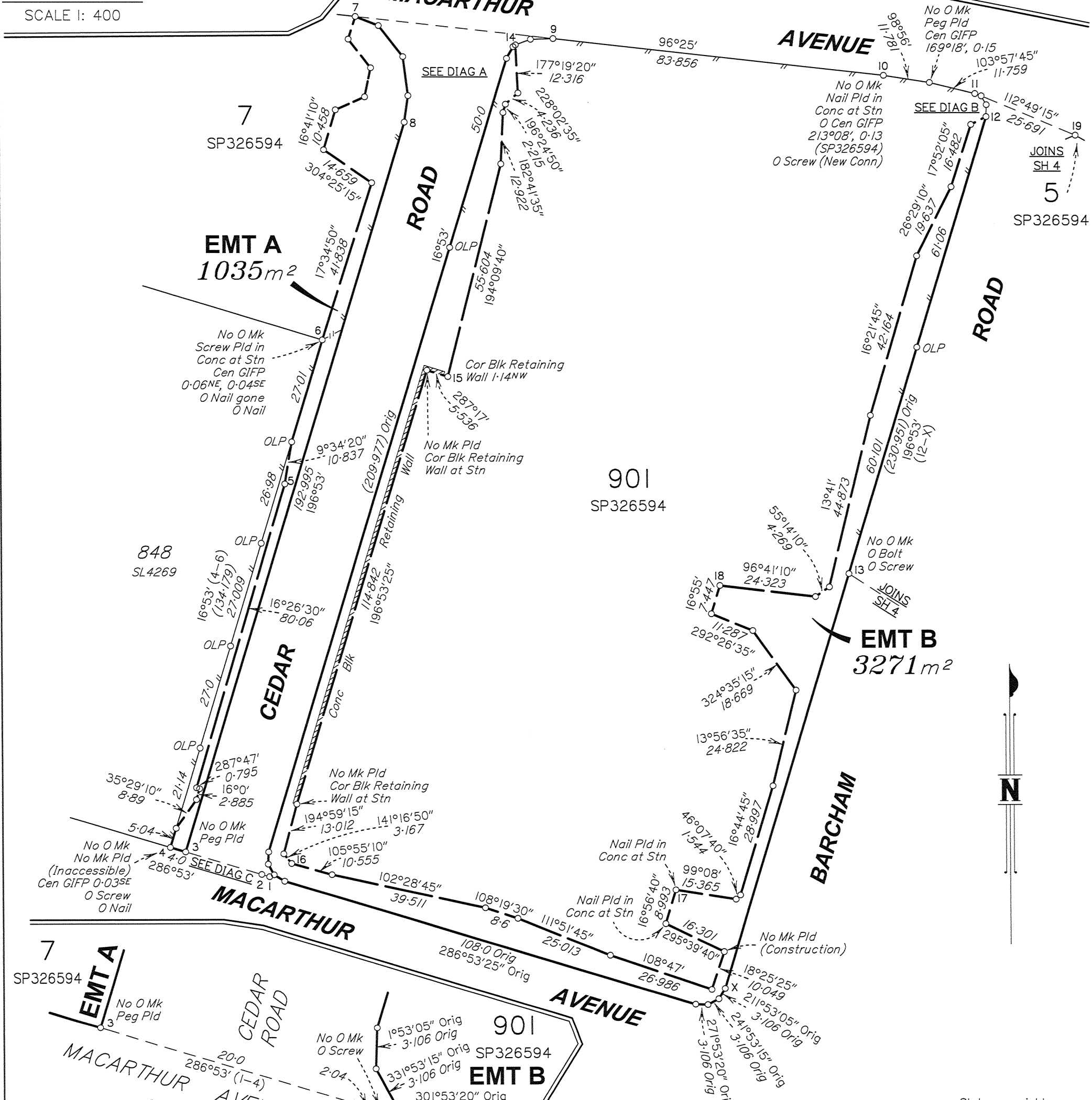
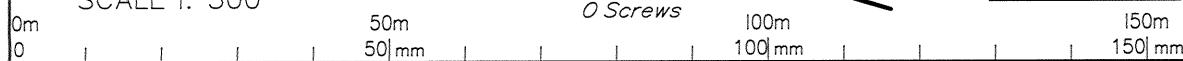


DIAGRAM C  
SCALE 1: 300

SCALE 1: 1000

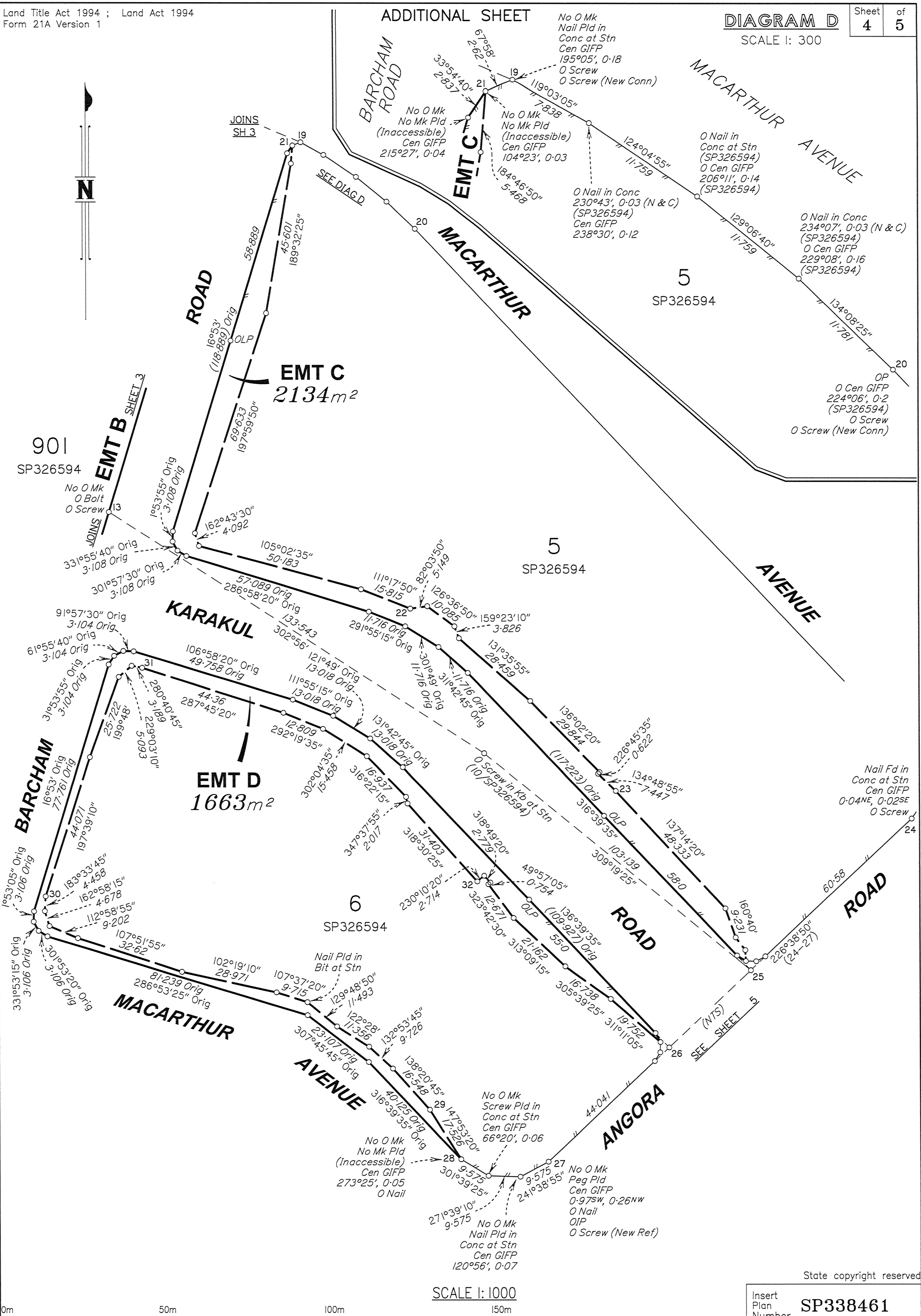
State copyright reserved

Insert Plan Number  
**SP338461**



BRMM7695\_000\_229\_1 SP338461

SCALE I: 300



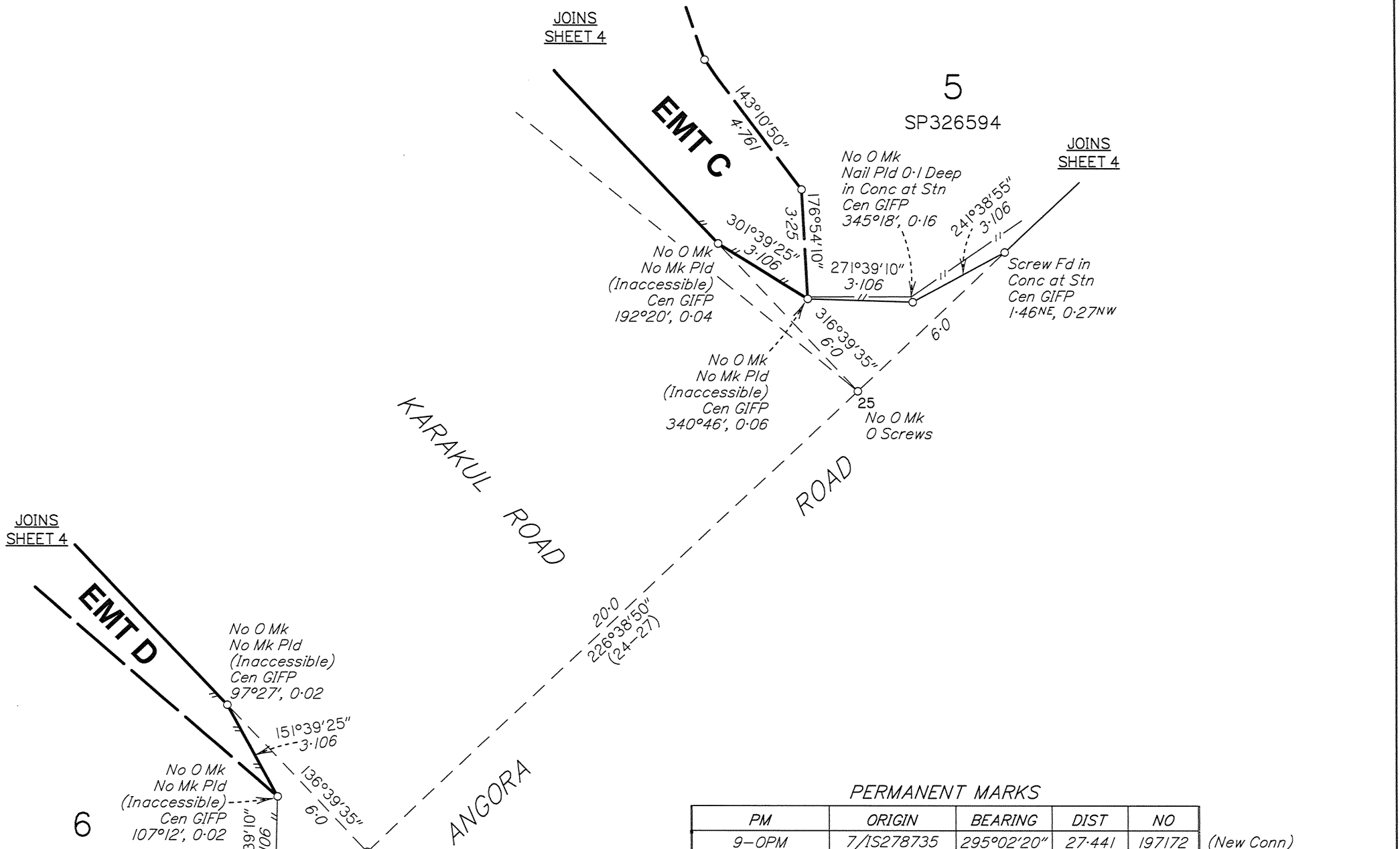
SCALE I: 1000

State copyright reserved

Insert Plan Number **SP338461**

0m 50m 100m 150m  
0 50mm 100mm 150mm

BRMM7695\_000\_229\_I\_SP338461



PERMANENT MARKS

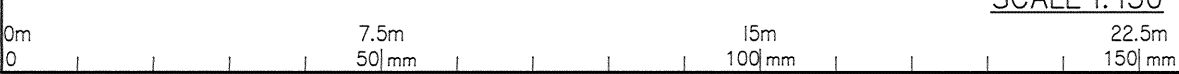
PM	ORIGIN	BEARING	DIST	NO
9-OPM	7/1S278735	295°02'20"	27.441	197172 (New Conn)

REFERENCE MARKS

STN	TO	ORIGIN	BEARING	DIST
1	O Screw in Kb	5/1S278746	176°09'15"	54.782
2	O Screw in Conc	2/SP326594	239°36'	1.471
2	O Screw in Kb	2/SP326594	156°29'20"	14.477
3	Screw in Conc		128°22'	4.545
4	O Screw in Bit	1/SP326594	201°04'	43.13
4	O GI Nail in Bit	6/1S278746	204°43'30"	48.185
5	Screw in Kb		136°16'	10.499
6	O Nail gone	5/1S272980	329°28'	4.758
6	O GI Nail in Bit	7/1S278746	247°07'	8.242
6	Screw in Conc		76°42'40"	7.708
7	O Screw in Conc	6/1S278735	52°03'40"	4.227 (New Conn)
7	I Pin		294°27'35"	5.722
7	O Nail in Conc	32/SP326594	67°08'55"	23.402
7	O Screw in Conc	6/1S278735	73°21'	24.111 (New Conn)
8	Screw in M/H		47°35'	3.639
9	O Screw in Kb	27/SP326594	280°44'35"	13.291
9	O Screw in Conc	9/1S278735	8°17'	29.662 (New Conn)
10	O Screw in Conc	20/1S219532	6°28'20"	3.076 (New Conn)
11	O Screw in Kb	20/SP326594	74°49'	9.26
12	Screw in M/H		48°35'	1.64
13	O Bolt in Kb	22/SP326594	146°54'50"	9.033
13	O Screw in Conc	22/SP326594	161°07'50"	11.772
14	Screw in Conc		324°10'	1.251
15	Nail in Conc		150°27'	3.935
16	I Pin		269°28'	2.507
17	Nail in Conc		304°55'15"	6.626
18	Nail in Conc		123°41'	1.157
19	O Screw in Kb	18/SP326594	332°05'	7.928
19	O Screw in Conc	12/1S278735	42°45'45"	27.878 (New Conn)
20	O Screw in Conc	17/SP326594	333°54'30"	9.948
20	O Screw in Conc	13/1S278735	35°59'15"	27.669 (New Conn)
21	Screw in Conc		318°09'	2.166
22	I Pin		32°03'	3.084
23	Nail in Conc		341°51'35"	5.104
24	O Screw in Conc	15/1S278735	77°26'15"	4.85
25	O Screw in Kb	9/SP326594	148°32'15"	5.87
25	O Screw in Kb	9/SP326594	177°24'05"	17.005
26	O Screw in Kb	8/SP326594	142°49'10"	6.452
27	Screw in Kb		180°37'20"	8.141
27	O Nail in Conc	7/SP326594	150°20'30"	18.344
27	OIP	7/SP326594	149°24'30"	19.195
27	O Screw in Kb	7/SP326594	67°49'05"	35.554 (New Ref)
28	Screw in Conc		134°02'15"	4.914
28	O Nail in Conc	6/SP326594	151°33'	28.528
29	Nail in Conc		143°16'35"	6.783
30	I Pin		196°03'	2.652
31	Nail in Conc		199°30'	1.854
32	Nail in Conc		132°10'	1.129



SCALE 1:150



State copyright reserved

Insert Plan Number **SP338461**

BRMM7695\_000\_229\_1 SP338461