

# OXLEY TOWNHOUSE DEVELOPMENT

## LANDSCAPE SCHEMATIC DESIGN REPORT

PLANS AND DOCUMENTS  
referred to in the PDA  
DEVELOPMENT APPROVAL

Approval no:

Date:



23 08 2024  
[ISSUE C]

[C]	23/08/2024	CT	EF
[B]	26/07/2024	CT	EF
[A]	30/04/2024	JM	EF
Revision	Date	Prepared by	Approved by

Prepared for:  
Honeycombs Property Group

Prepared by:  
RPS Australia East

Telephone: +61 7 3124 9300 Facsimile: +61 7 3124 9399

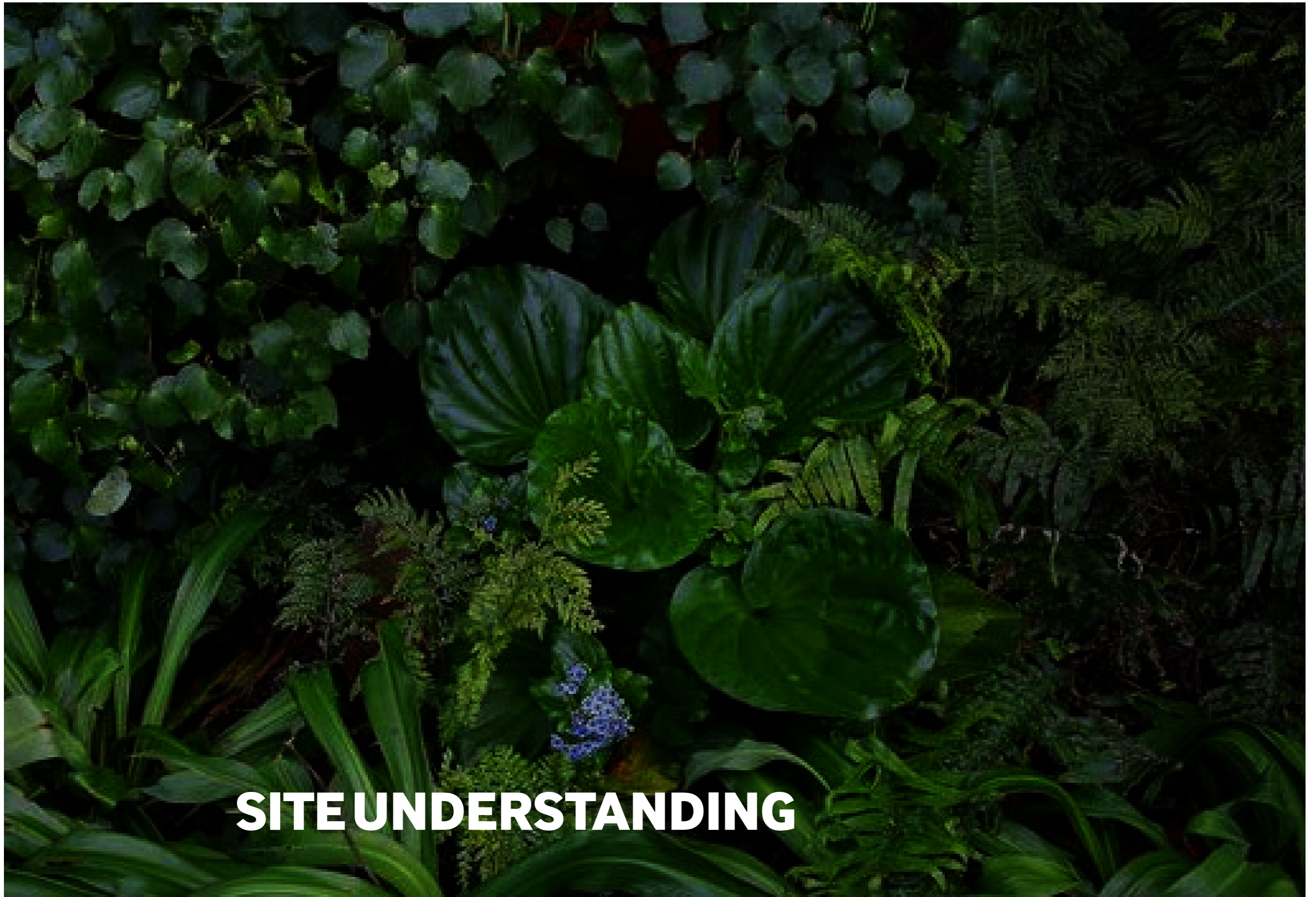
[www.rpsgroup.com.au](http://www.rpsgroup.com.au)

ABN 81 591 046 588



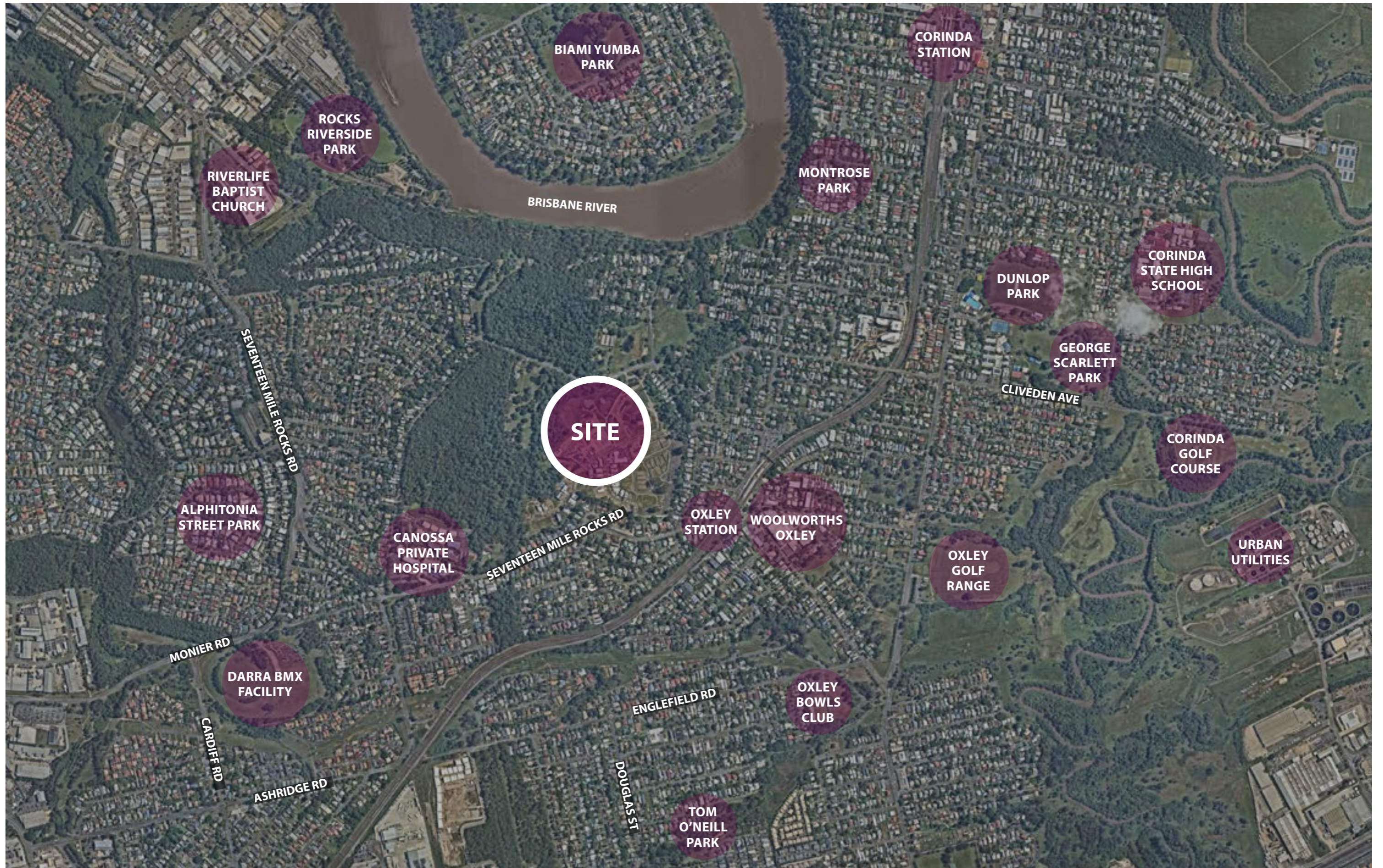
© RPS 2020

The information contained in this document produced by RPS is solely for the use of for the purpose for which it has been prepared and RPS undertakes no duty to or accepts any responsibility to any third party who may rely upon this document. All rights reserved. No section or element of this document may be removed from this document, reproduced, electronically stored or transmitted in any form without the written permission of RPS.

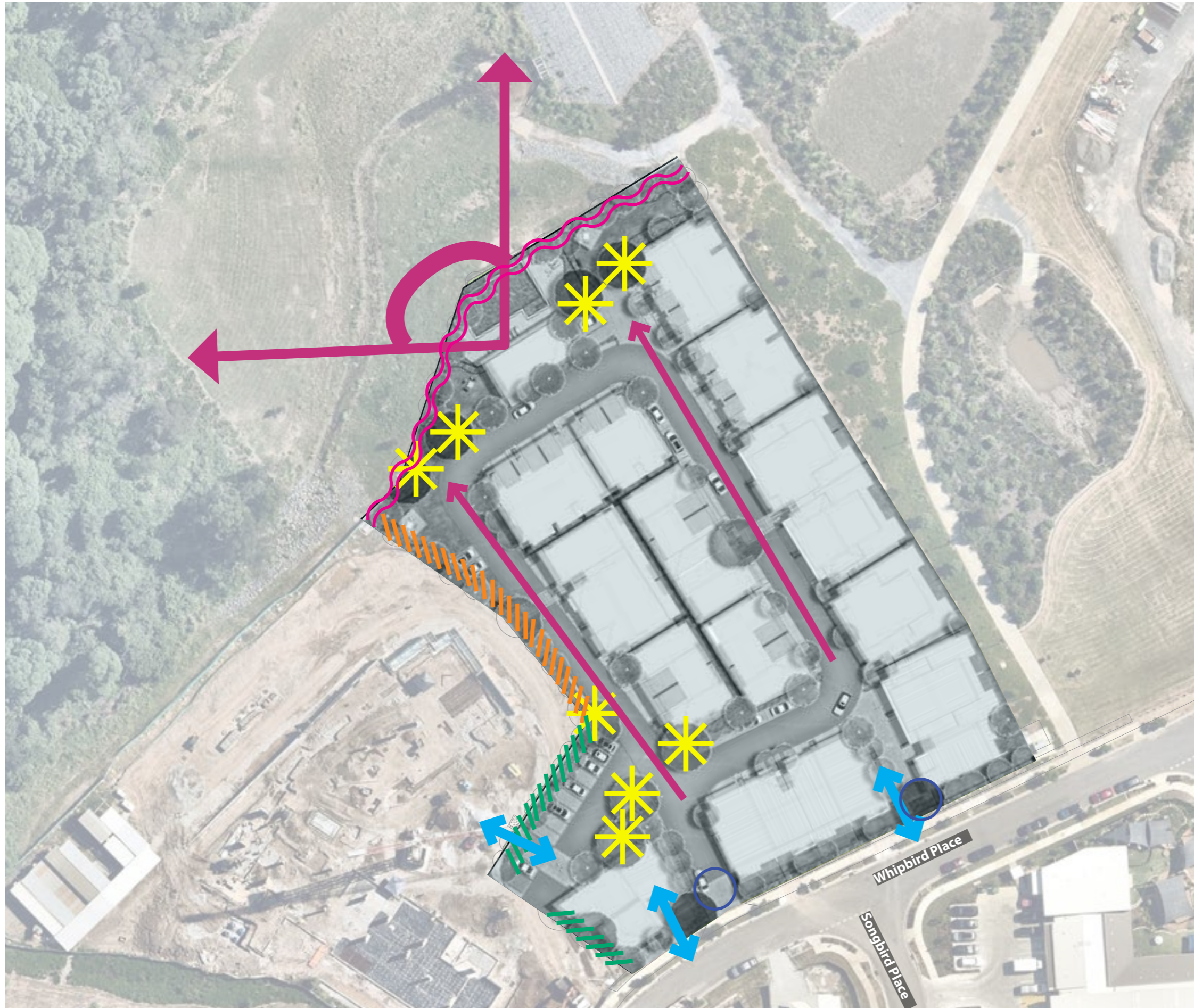


# **SITE UNDERSTANDING**









# CONTEXT MAP



# SITE



## LEGEND

-  Pedestrian connections
-  Key visual corners
-  Open views to creek corridor (To be maintained)
-  Screen neighbouring development for privacy
-  Green interface to Community Centre
-  Long views to creek corridor
-  Borrowed view to creek protected and celebrated
-  Gateways





**VISIONING**

# LANDSCAPE CHARACTER



23 August 2024

Version C

004868 Oxley Residential

Pg 7 of 13



**CONCEPT DESIGN**



# 3.1 SITE MASTERPLAN



## LEGEND

- ① Feature trees to entry to creating entry landmark
  - ② Pavement threshold treatment to signify slow down areas and break up expanse of pavement. Adjacent planting low maintain sight lines.
  - ③ Bike parking
  - ④ Tree avenue maximising shade and amenity to the streetscape.
  - ⑤ Pedestrian entry
  - ⑥ Large trees to frame views to the creek corridor
  - ⑦ Open planting to create filtered views out over the creek corridor.
  - ⑧ Multi-use lawn area for events and passive recreation like community long table dinners, friendly games of boccie.
  - ⑨ Seating nodes for small social gatherings, outdoor office opportunities
  - ⑩ Pool area overlooking existing creek corridor
  - ⑪ Carwash bay
  - ⑫ Community centre
  - ⑬ BBQ pavilion
  - ⑭ Carparks
  - ⑮ Bin pads
  - ⑯ Small street trees
  - ⑰ General planting
  - ⑱ Planting to the streetscape to soften the rear of lot fences and provide privacy.
  - ⑲ 600mm max high planting to visual splay lines to maintain pedestrian view lines
- Bin collection points.

SCALE 1:100 @ A3





# PLANTING PALETTE

## ENTRY TREE



CUPANIOPSIS ANACARDIoidES



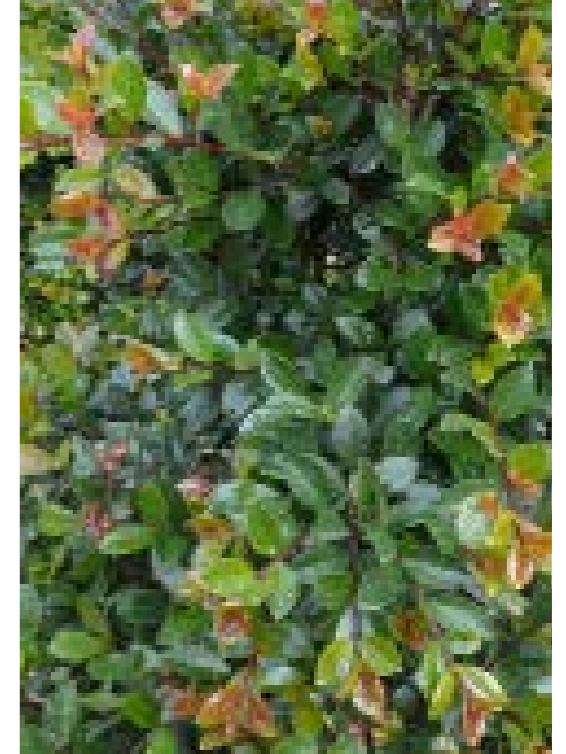
## SCREENING & TALL SHRUBS



RADERMACHERA SUMMERSCENT'



WESTRINGIA FRUTICOSA



SYZYGIUM ELITE

## GENERAL TREES



ELAEOCARPUS RETICULATUS



RANDIA FITZALANII



LOPHOSTEMON CONFERTUS



WATERHOUSEA FLORIBUNDA

## SMALL SHRUBS AND GROUNDCOVER



GOODENIA OVATA



CRASSULA OVATA



NEOMARICA GRACILIS



DICHONDRA SILVER FALLS



FICUS GREEN ISLAND



HYMENOCALLIS LITTORALIS



ALTERNANTHERA DENTATA



MYOPORUM PARVIFOLIUM



WESTRINGIA MUNDI



XANTHOSTEMON CHRYSANTHUS



LIRIOPE MUSCARI



CRASSULA OVATA



SENECIO SERPENS



ALPINIA MUTICA



PHYLLANTHUS MYR

