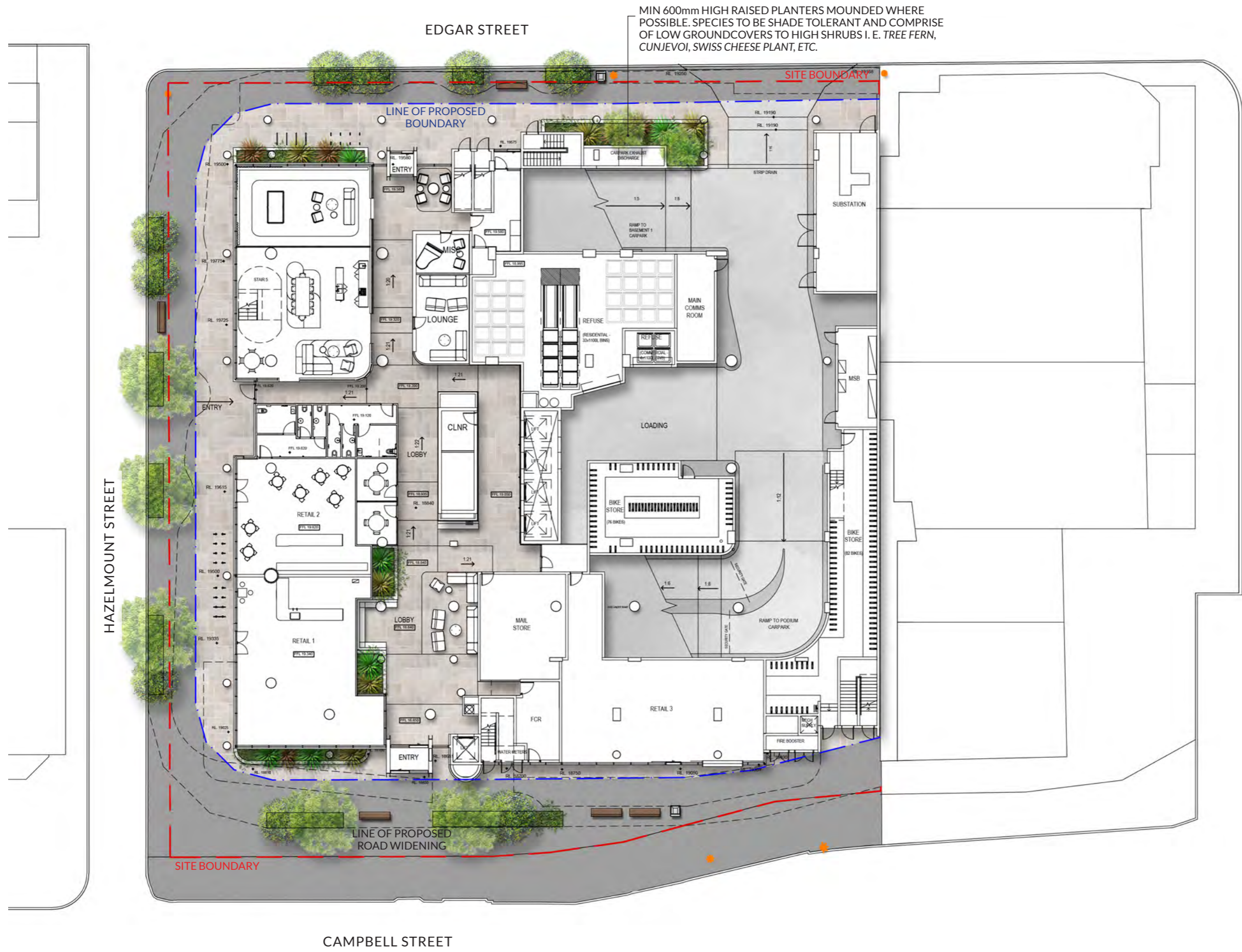


An aerial photograph of a modern, multi-story building with a glass facade. The building features several levels of green roofs, each with a white, curved, wave-like edge. The roofs are densely planted with various green plants, including palm trees and other tropical foliage. The building is situated in an urban environment, with a street and other buildings visible in the background. The overall scene is vibrant and green.

# 19-25 CAMPBELL STREET, BOWEN HILLS





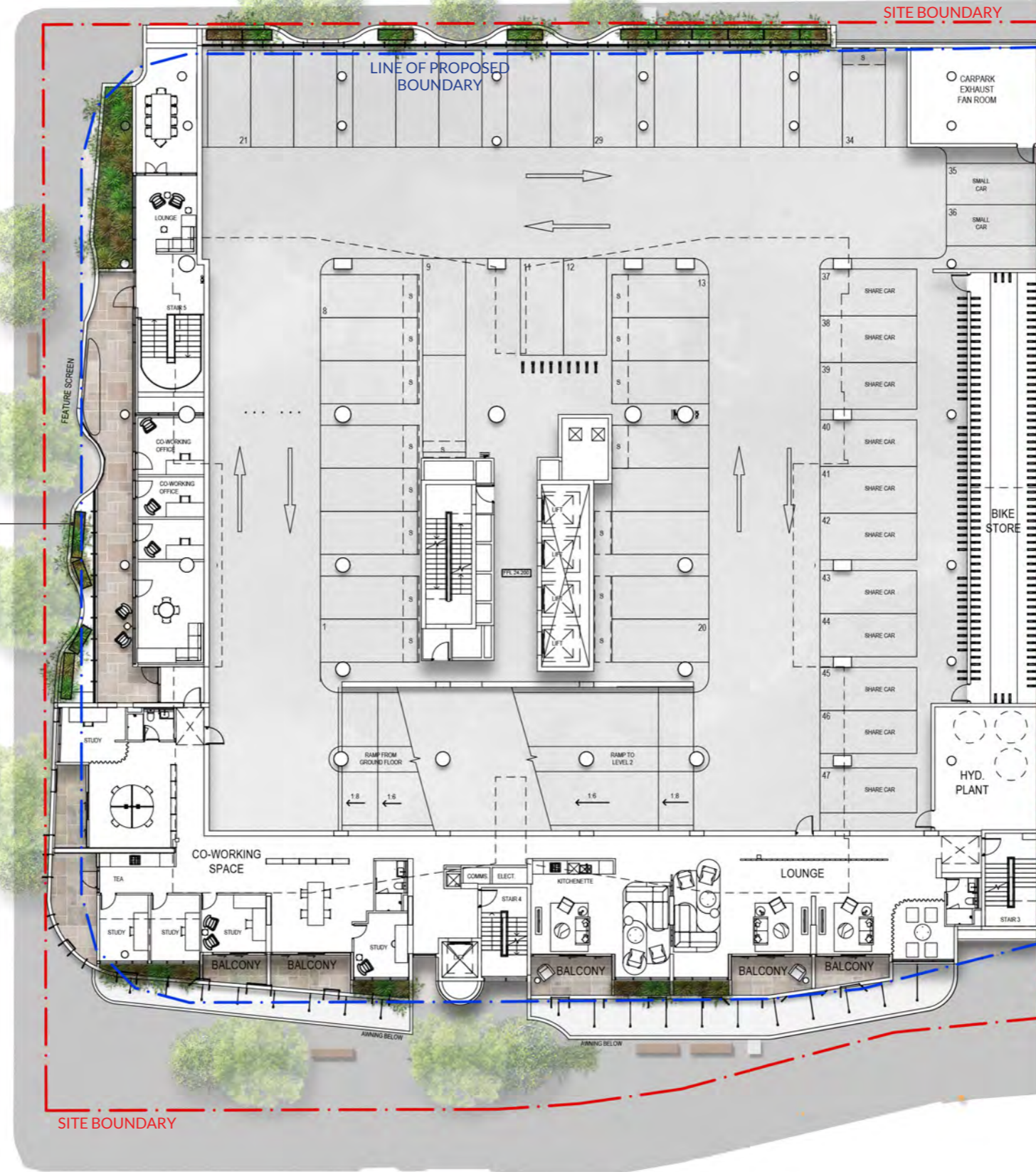
EDGAR STREET

SITE BOUNDARY

PLANTERS TO BE MIN 600-1000mm DEPTH AND COMPRISE OF SHRUBS AND GROUNDCOVERS ONLY. CASCADING GROUNDCOVERS ALSO DRAPE OVER THE EDGE OF THE PLANTERS THERE IS ALSO POTENTIAL TO HAVE CLIMBERS/ VINES UP THE MESH SCREEN.

ALL PLANTERS TO BE ACCESSIBLE THROUGH MESH SCREEN AND ANCHOR POINTS PROVIDED ALONG PLANTER EDGE FOR MAINTENANCE PURPOSES.

HAZELMOUNT STREET



SITE BOUNDARY

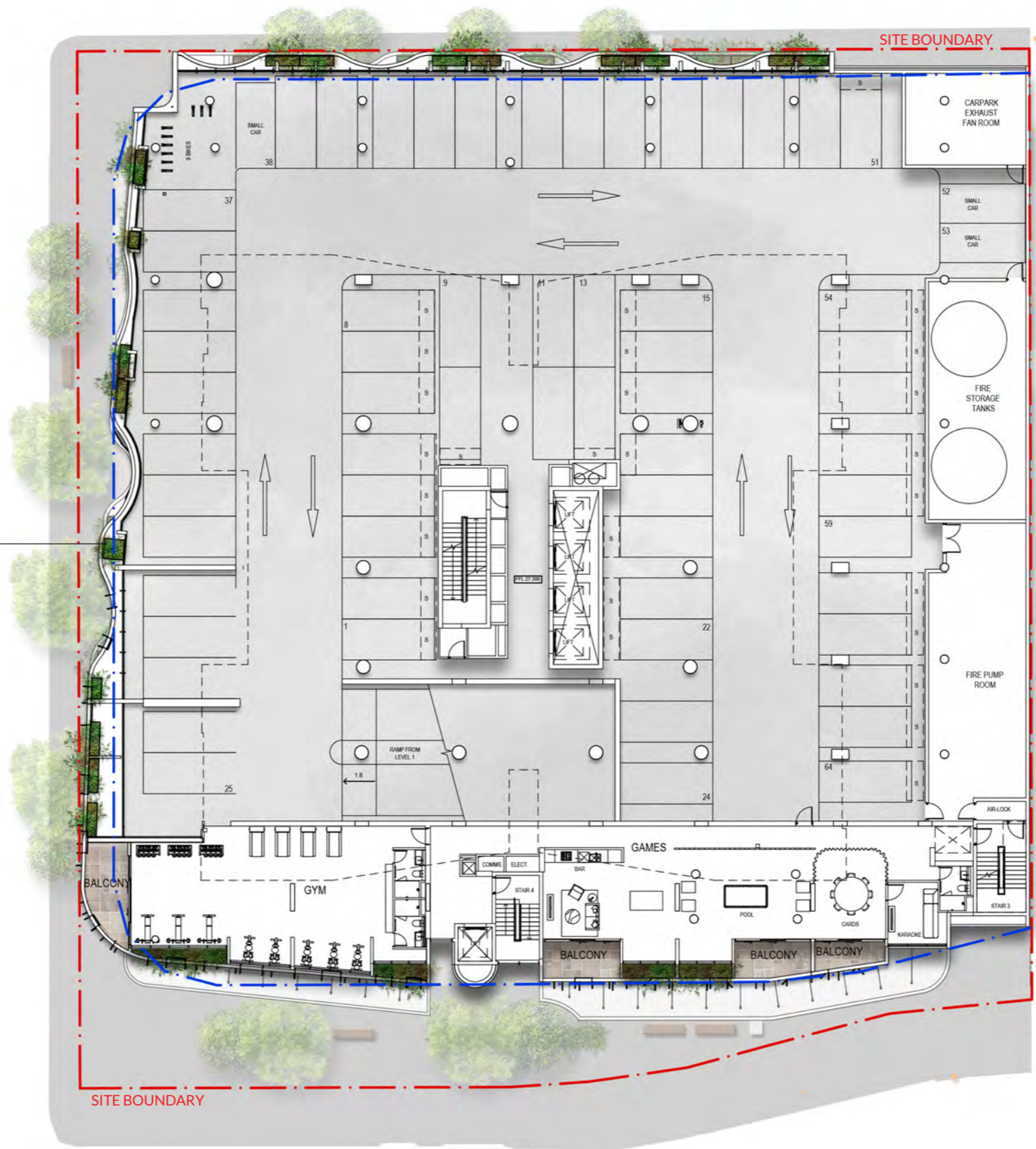
CAMPBELL STREET

# 19-25 CAMPBELL STREET, BOWEN HILLS

2018-L-SD3 - LEVEL 1 FLOOR PLAN - REV03

SCALE: 1:300 @ A3

PLANTER REQUIREMENTS  
AS PER LEVEL 1



# 19-25 CAMPBELL STREET, BOWEN HILLS

2018-L-SD4 - LEVEL 2 FLOOR PLAN - REV03

SCALE: 1:300 @ A3



# 19-25 CAMPBELL STREET, BOWEN HILLS

2018-L-SD5 - LEVEL 3 PODIUM LEVEL - REV03

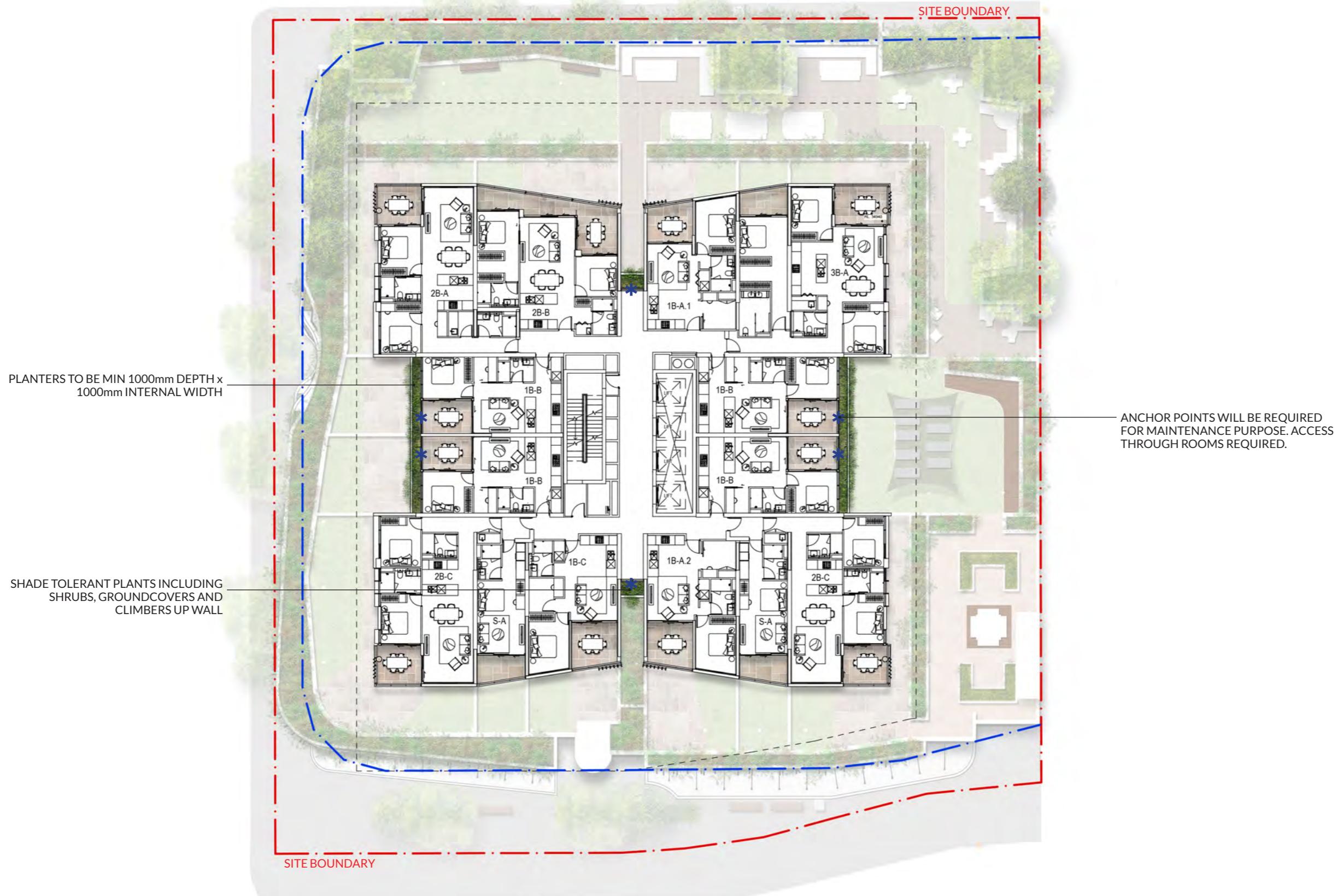
SCALE: 1:300 @ A3



# 19-25 CAMPBELL STREET, BOWEN HILLS

2018-L-SD6 - PODIUM LEVEL CHARACTER IMAGES - REV02

SCALE: NTS

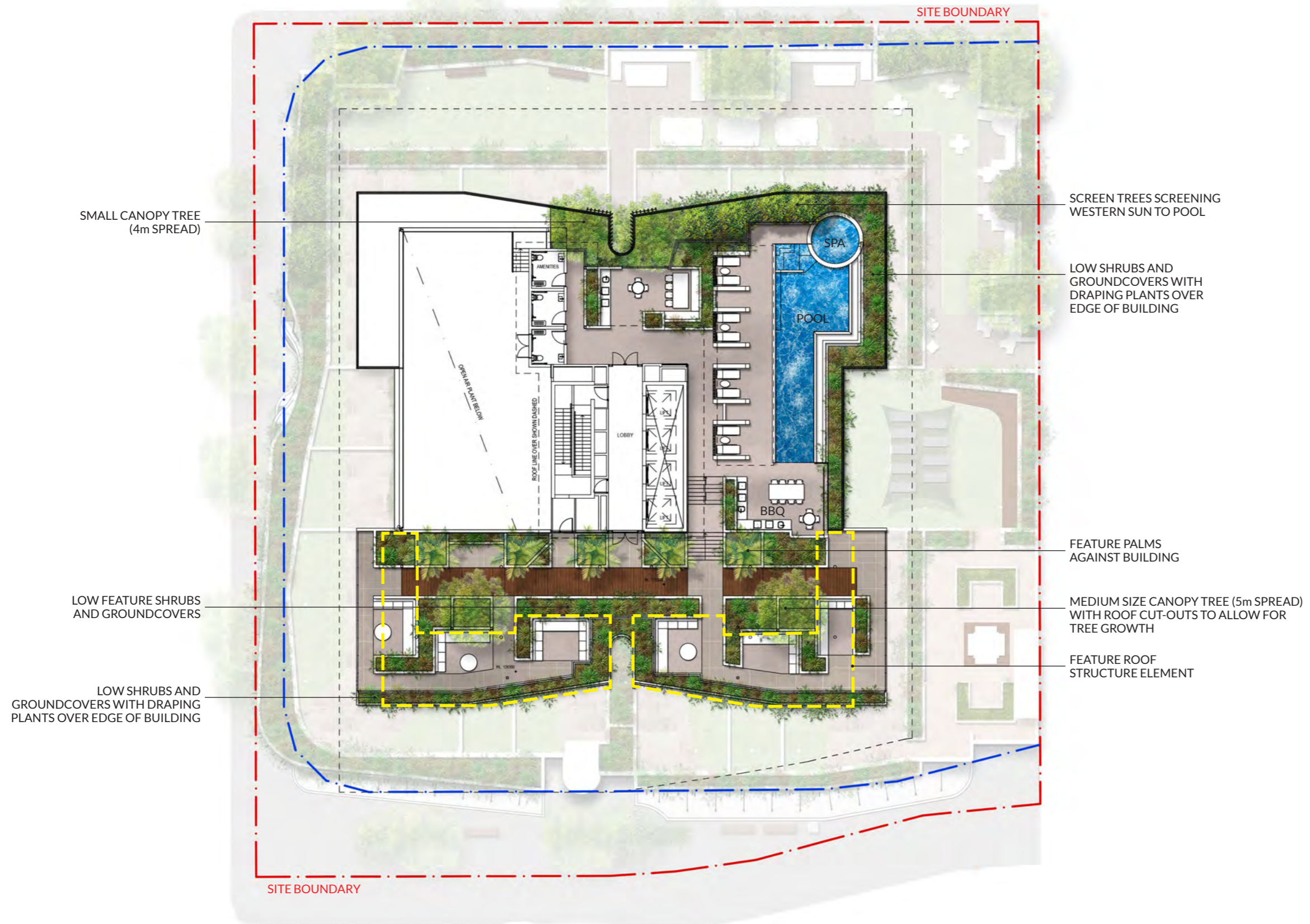


# 19-25 CAMPBELL STREET, BOWEN HILLS

2018-L-SD7 - TYPICAL (EVEN) LEVEL 4-33 FLOOR PLAN - REV03

SCALE: 1:300 @ A3

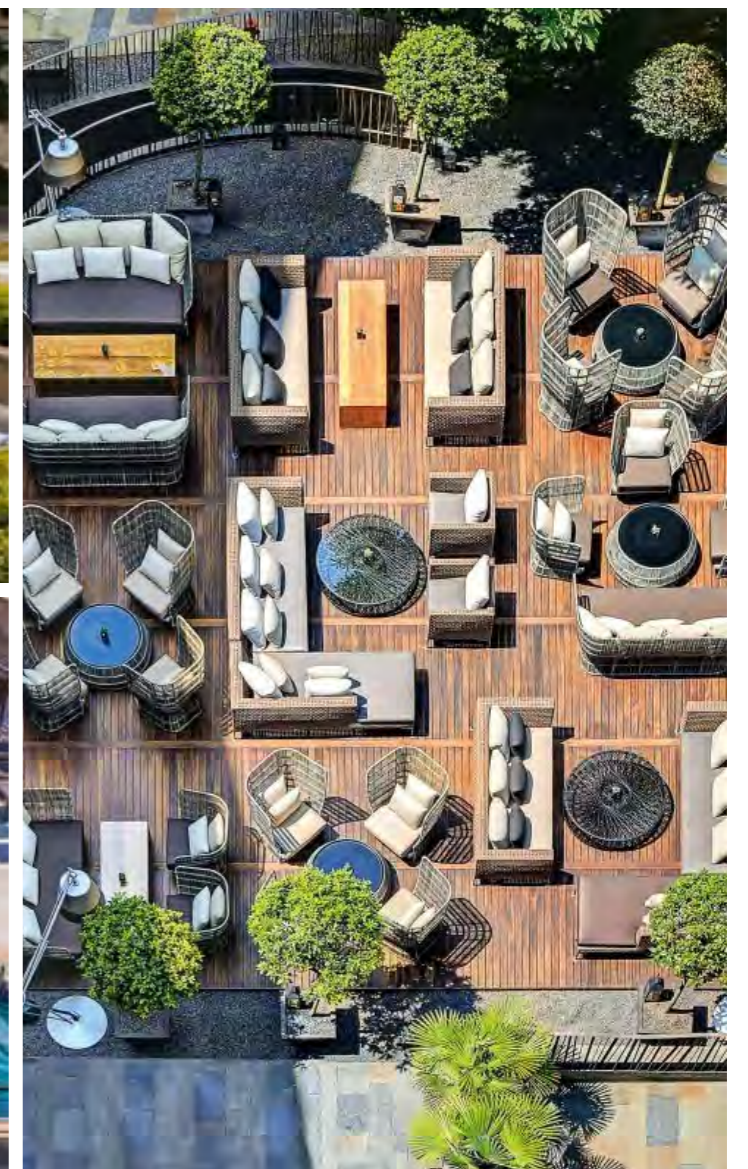




# 19-25 CAMPBELL STREET, BOWEN HILLS

2018-L-SD8 - ROOF LEVEL (UPPER & LOWER) - REV02

SCALE: 1:300 @ A3



# 19-25 CAMPBELL STREET, BOWEN HILLS

2018-L-SD9 - ROOF LEVEL CHARACTER IMAGES - REV01

SCALE: 1:300 @ A3



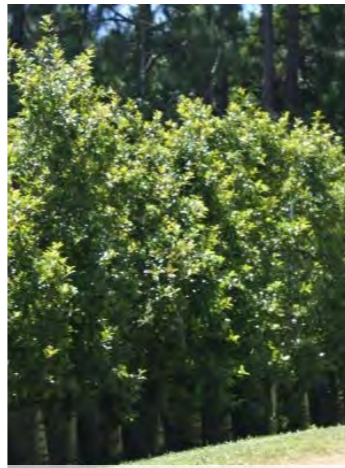
XANTHOSTEMON chrysanthus  
Golden Penda



ALPINIA zerumbet  
Shell Ginger



AGAVE attenuata  
Fox Tail Agave



SYZYGium australe 'Resilience'  
Lillypilly 'Resilience'



RHOEO  
Moses in a Cradle



ELAEOCARPUS eumundi  
Smooth-Leaved Quandong



PHILODENDRON 'Rojo Congo'  
Rojo Congo Philodendron



PHILODENDRON selloum 'Hope'  
Philodendron Hope



TRISTANIOPSIS laurina 'Luscious'  
Water Gum



DAVALLIA fejeensis  
Rabbit's Foot Fern



MYOPORUM parvifolium  
Creeping Boobialla



HYMENOCALLIS littoralis  
Spider Lily



PHILODENDRON xanadu  
Philodendron Xanadu



CYATHEA cooperi  
Australian Tree Fern



CARISSA grandiflora  
Desert Star



LIRIOPE muscari  
Liriope Evergreen Giant



WATERHOUSEIA floribunda  
Weeping Lilly Pilly



ALOCASIA macrorrhiza  
Giant Taro



EPIPREMNUM aureum  
Devil's Ivy



CISSUS 'Ellen Danica'  
Kangaroo Vine



ZAMIA furfuracea  
Cardboard Palm



LIRIOPE 'Stripey White'  
Stripey White



MONSTERA Deliciosa  
Swiss Cheese Plant



PANDOREA jasminoides  
Bower Vine



CUPANOPSIS anacardioides  
Tuckeroo



CISSUS antarctica  
Kangaroo Vine



TARLMOUNIA elliptica  
Curtain Creeper

# 19-25 CAMPBELL STREET, BOWEN HILLS

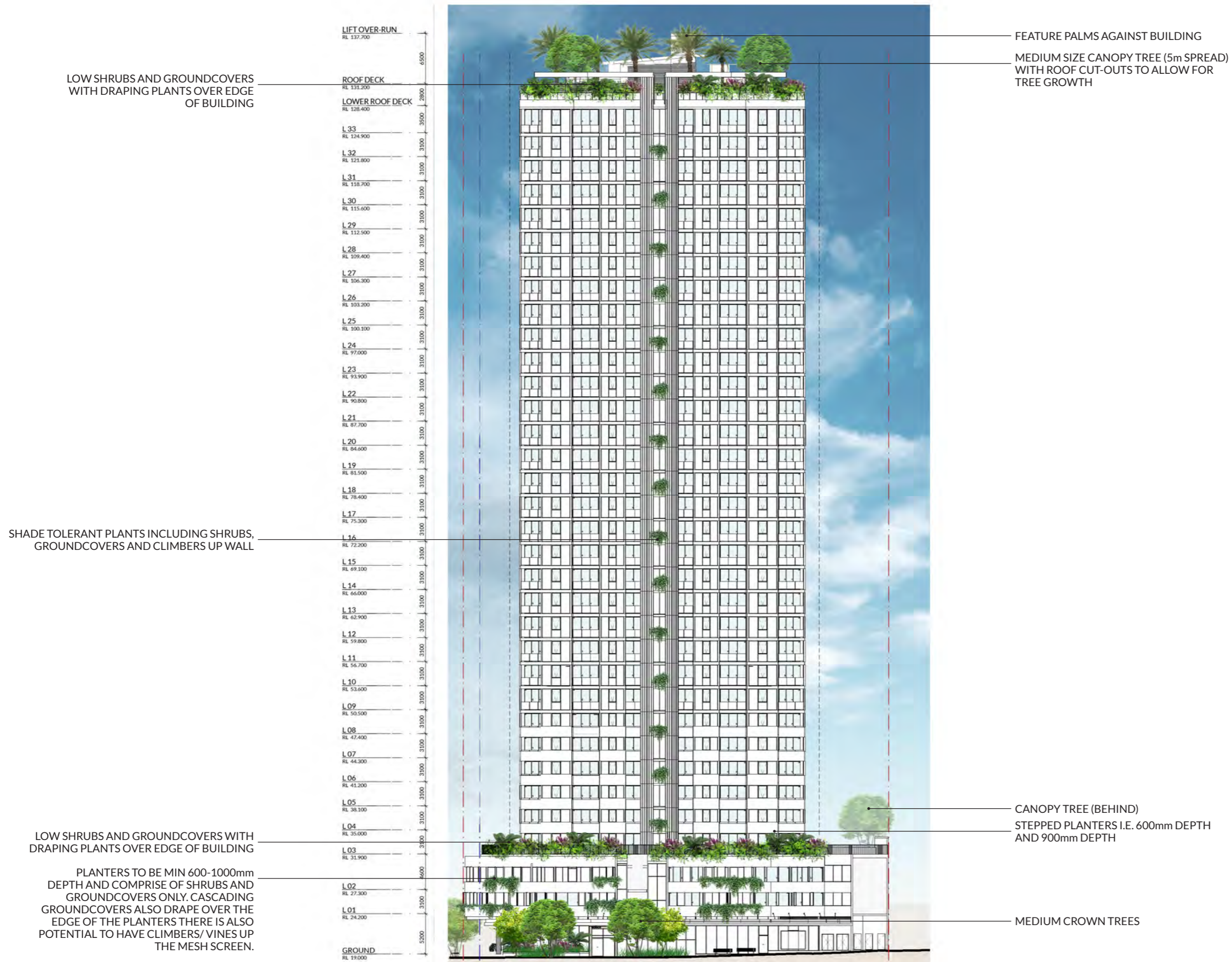
2018-L-SD10 - PROPOSED PLANT PALETTE - REV01  
SCALE: NTS



# 19-25 CAMPBELL STREET, BOWEN HILLS

2018-L-SD11 - NORTH ELEVATION - EDGAR STREET - REV02

SCALE: 1:500 @ A3



# 19-25 CAMPBELL STREET, BOWEN HILLS

2018-L-SD12 - SOUTH ELEVATION - CAMPBELL STREET - REV02

SCALE: 1:500 @ A3



# 19-25 CAMPBELL STREET, BOWEN HILLS

2018-L-SD13 - EAST ELEVATION - REV02

SCALE: 1:500 @ A3



# 19-25 CAMPBELL STREET, BOWEN HILLS

2018-L-SD14 - WEST ELEVATION - REV02

SCALE: 1:500 @ A3