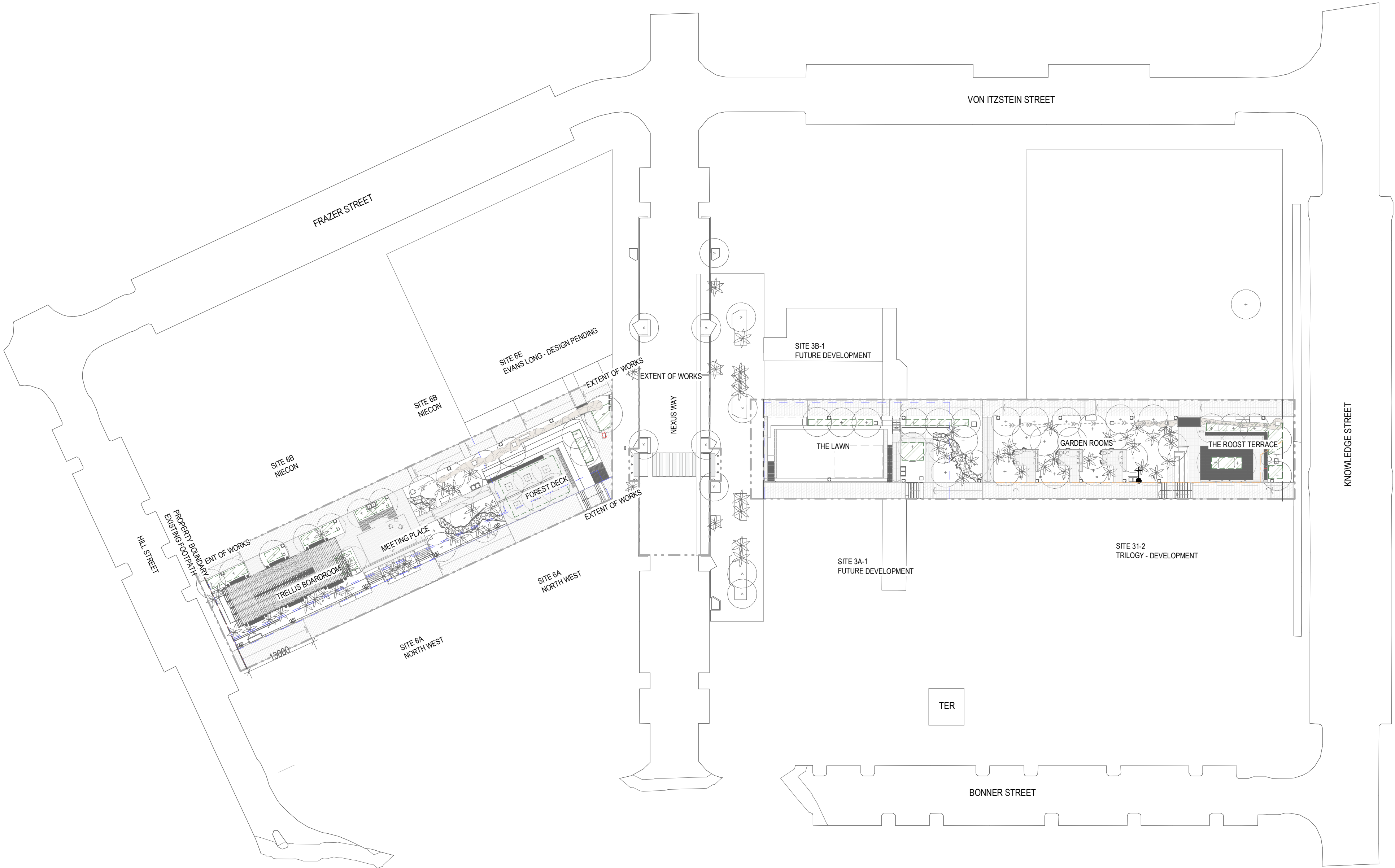


NOTES

1. REFER TO DRAWING H-0001 FOR LEGEND AND GENERAL NOTES

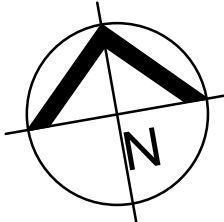


DESIGN DEVELOPMENT

NOT TO BE USED FOR CONSTRUCTION

COPYRIGHT OF THIS DRAWING IS VESTED IN INTROBA. THE DRAWING SHALL NOT BE REPRODUCED OR COPIED IN WHOLE OR IN PART IN ANY FORM WITHOUT THE PRIOR WRITTEN APPROVAL OF INTROBA.

CONTRACTOR MUST VISIT SITE BEFORE TENDERING



No.	DATE	REVISION	BY
1	06-04-23	50% DESIGN DEVELOPMENT DRAFT	DDS
2	18-04-23	50% DESIGN DEVELOPMENT	DDS
3	17-05-23	90% DESIGN DEVELOPMENT	VL
4	26-05-23	95% DESIGN DEVELOPMENT CLIENT ISSUE	VL
5	21-07-23	100% DESIGN DEVELOPMENT ISSUE	VL

Client:



Queensland
Government

Economic Development Queensland (EDQ)

Architect:



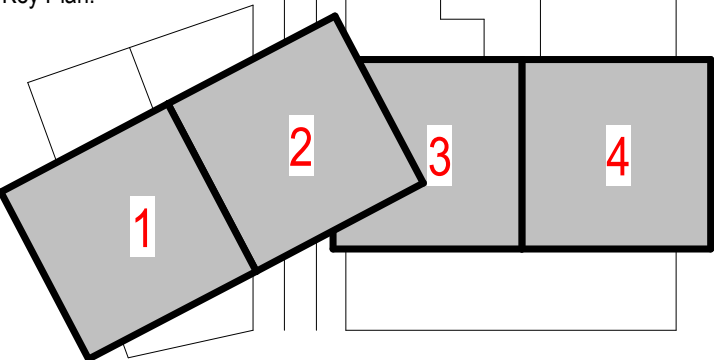
Hassell

Hassell LTD ABN 24 007 711 435
Level2, Pier 8/9,23 Hickson Rd
Sydney NSW 2000 Australia
T +61 2 9101 2000
F +61 2 9101 2100
sydney@hassellstudio.com

REFERENCE MODEL RECEIVED DATE:

Architecture Model 1 Received on: 17-07-23

Key Plan:





Introba

Brisbane
Level 7, 200 Creek Street
Brisbane, QLD 4000

hello@introba.com
www.introba.com

LUMINA OPEN SPACE

SOUTHPORT, QLD 4215

HYDRAULIC SERVICES SITE PLAN

DRAWING REPRODUCTION

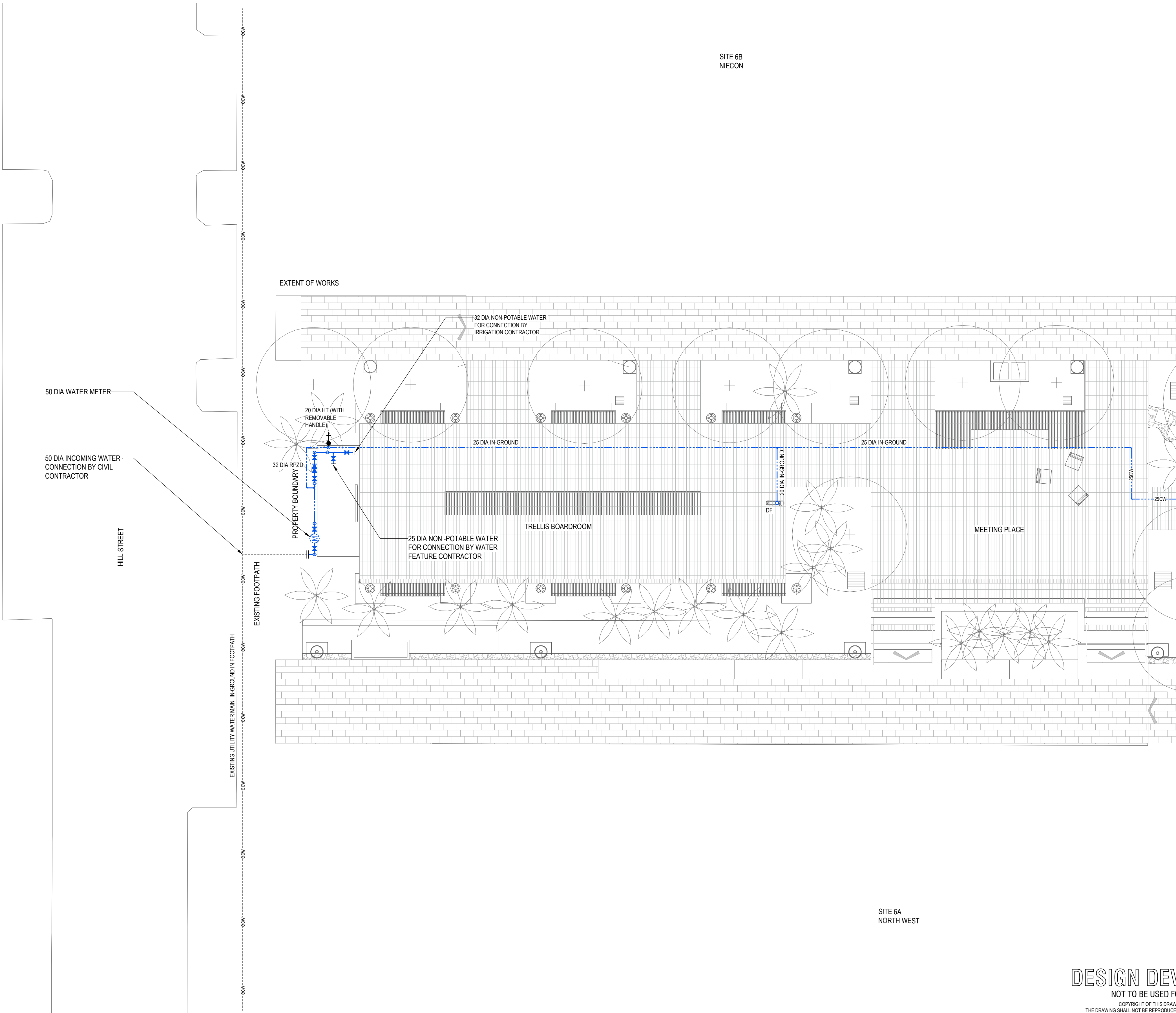
THIS SET OF DOCUMENTS CONTAINS DRAWINGS THAT HAVE BEEN CREATED IN COLOUR. REPRODUCTIONS MUST BE MADE IN COLOUR TO AVOID LOSS OF INFORMATION. FOR BLACK & WHITE PRINTING PLEASE CONTACT INTROBA FOR A REVISED SET OF BLACK & WHITE SPECIFIC DOCUMENTS.

DRAWN	CS	DATE	21-07-23
DESIGN	AK	SCALE	N.T.S
CHECKED	JDG	PLOT RATIO	1 / A1
APPROVED	DS	PROJECT No	62.0010071
62.0010071-H-0100			5

21/07/2023 16:42:05 Autodesk Docs://62.0010071 - Lumina Open Space/62.0010071_MEP_R22.rvt

NOTES

1. REFER TO DRAWING H-0001 FOR LEGEND AND GENERAL NOTES

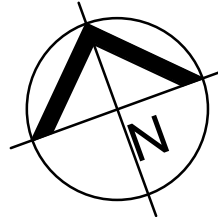


DESIGN DEVELOPMENT

NOT TO BE USED FOR CONSTRUCTION

COPYRIGHT OF THIS DRAWING IS VESTED IN INTROBA. THE DRAWING SHALL NOT BE REPRODUCED OR COPIED IN WHOLE OR IN PART IN ANY FORM WITHOUT THE PRIOR WRITTEN APPROVAL OF INTROBA.

CONTRACTOR MUST VISIT SITE BEFORE TENDERING



No.	DATE	REVISION	BY
1	06-04-23	50% DESIGN DEVELOPMENT DRAFT	DDS
2	18-04-23	50% DESIGN DEVELOPMENT	DDS
3	17-05-23	90% DESIGN DEVELOPMENT	VL
4	26-05-23	95% DESIGN DEVELOPMENT CLIENT ISSUE	VL
5	21-07-23	100% DESIGN DEVELOPMENT ISSUE	VL

Client:



Economic Development Queensland (EDQ)

Architect:



Hassell
Hassell LTD ABN 24 007 711 435
Level2, Pier 8/9,23 Hickson Rd
Sydney NSW 2000 Australia
T +61 2 9101 2000
F +61 2 9101 2100
sydney@hassellstudio.com

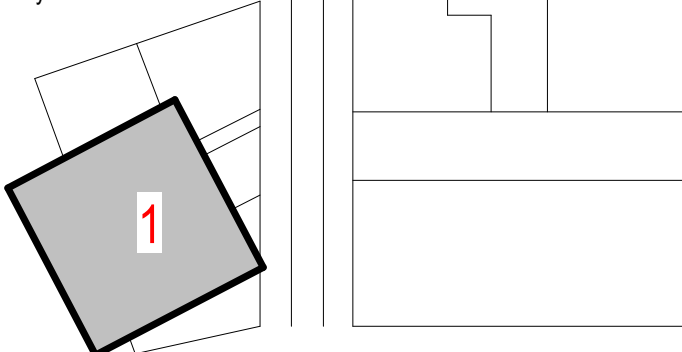
Scale 1:100



REFERENCE MODEL RECEIVED DATE:

Architecture Model 1 Received on: 17-07-23

Key Plan:



Brisbane
Level 7, 200 Creek Street
Brisbane, QLD 4000

hello@introba.com
www.introba.com

LUMINA OPEN SPACE

SOUTHPORT, QLD
4215

HYDRAULIC SERVICES
WATER LAYOUT SHEET 1

DRAWING REPRODUCTION

THIS SET OF DOCUMENTS CONTAINS DRAWINGS THAT HAVE BEEN CREATED IN COLOUR. REPRODUCTIONS MUST BE MADE IN COLOUR TO AVOID LOSS OF INFORMATION. FOR BLACK & WHITE PRINTING PLEASE CONTACT INTROBA FOR A REVISED SET OF BLACK & WHITE SPECIFIC DOCUMENTS.

DRAWN	CS	DATE	21-07-23
DESIGN	AK	SCALE	1 : 100 @A1
CHECKED	JDG	PLOT RATIO	1 / A1
APPROVED	DS	PROJECT No	62.0010071

62.0010071-H-1001

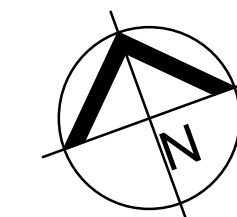
5

SITE 6E
EVANS LONG - DESIGN PENDING



FOR CONTINUATION REFER TO DRAWING H-1003

NOT TO BE USED FOR CONSTRUCTION
COPYRIGHT OF THIS DRAWING IS VESTED IN INTROBA.
THE DRAWING SHALL NOT BE REPRODUCED OR COPIED IN WHOLE OR IN PART IN ANY
FORM, WITHOUT THE PRIOR WRITTEN APPROVAL OF INTROBA.
CONTRACTOR MUST VISIT SITE BEFORE TENDERING



Client:



Queensland
Government

Economic Development Queensland (EDQ)

H



Key Plan:

A key plan diagram showing a site layout. A central rectangular area is shaded gray and labeled with a red '2'. This area is surrounded by other rectangular plots, some of which are also shaded gray. The layout is oriented diagonally on the page.

Introba
Brisbane
Level 7, 200 Creek Street
Brisbane, QLD 4000

**LUMINA OPEN
SPACE**
SOUTHPORT, QLD
4215

HYDRAULIC SERVICES
WATER LAYOUT SHEET 2

DRAWING REPRODUCTION
 SET OF DOCUMENTS CONTAINS DRAWINGS THAT HAVE BEEN CREATED IN COLOUR. REPRODUCTIONS MUST BE MADE IN COLOUR TO AVOID LOSS OF INFORMATION.
 FOR BLACK & WHITE PRINTING PLEASE CONTACT INTEGRA FOR A REVISION.
 BLACK & WHITE SPECIFIC DOCUMENTS

DRAWN	CS	DATE	21-07-23
DESIGN	AK	SCALE	1 : 100 @A1
CHECKED	JDG	PLOT RATIO	1 / A1
APPROVED	DS	PROJECT No	62.001007/1
62.001007/1-H-1002			5

1. REFER TO DRAWING H-0001 FOR LEGEND AND GENERAL NOTES




FOR CONTINUATION REFER TO DRAWING H-1004

Client:


Queensland
Government

Economic Development Queensland (EDQ)

Scale 1:100



A bar chart with a horizontal axis labeled 0, 1, 2, and 5. There are three black bars: the first from 0 to 1, the second from 1 to 2, and the third from 2 to 5.

REFERENCE MODEL RECEIVED DATE:

Architecture Model 1 Received on: 17-07-23

 **Introba**
Brisbane
Level 7, 200 Creek Street
Brisbane, QLD 4000

hello@introba.com
www.introba.com

HYDRAULIC SERVICES

WATER LAYOUT SHEET 3

DRAWING REPRODUCTION

THIS SET OF DOCUMENTS CONTAINS DRAWINGS THAT HAVE BEEN CREATED IN COLOUR.
REPRODUCTIONS MUST BE MADE IN COLOUR TO AVOID LOSS OF INFORMATION.

FOR BLACK & WHITE PRINTING PLEASE CONTACT INTROBA FOR A REVISED SET OF
BLACK & WHITE SPECIFICATIONS

DRAWN	CS	DATE	21-07-23
DESIGN	AK	SCALE	1 : 100 @A1
CHECKED	JDG	PLOT RATIO	1 / A1
APPROVED	DS	PROJECT No	62.0010071
62.0010071-H-1003			5

1. REFER TO DRAWING H-0001 FOR LEGEND AND GENERAL NOTES

FOR CONTINUATION REFER TO DRAWING H-1003

+
GARDEN ROOMS

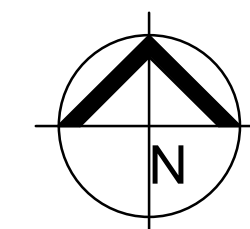
25 DIA NON-POTABLE WATER
FOR CONNECTION BY
IRRIGATION CONTRACTOR

THE ROOST TERRACE

KNOWLEDGE STREET

SITE 31-2
TRILOGY - DEVELOPMENT

NOT TO BE USED FOR CONSTRUCTION
COPYRIGHT OF THIS DRAWING IS VESTED IN INTROBA.
THE DRAWING SHALL NOT BE REPRODUCED OR COPIED IN WHOLE OR IN PART IN ANY
FORM, WITHOUT THE PRIOR WRITTEN APPROVAL OF INTROBA.
CONTRACTOR MUST VISIT SITE BEFORE TENDERING



No.	DATE	REVISION	BY
1	08-04-23	50% DESIGN DEVELOPMENT DRAFT	DOS
2	18-04-23	80% DESIGN DEVELOPMENT	DOS
3	17-05-23	90% DESIGN DEVELOPMENT	VL
4	26-05-23	95% DESIGN DEVELOPMENT CLIENT ISSUE	VL
5	21-07-23	100% DESIGN DEVELOPMENT ISSUE	VL

Client:



Economic Development Queensland (EDQ)

Architect:

**Hassell**

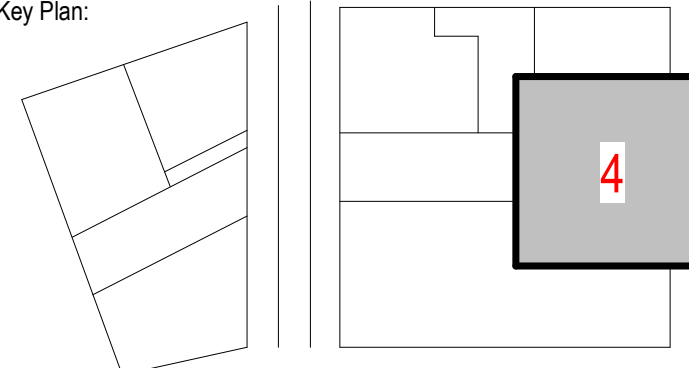
Hassell LTD ABN 24 007 711 435
Level2, Pier 8/9,23 Hickson Rd
Sydney NSW 2000 Australia
T +61 2 9101 2000
F +61 2 9101 2100
sydney@hassellstudio.com

Scale 1:1000

REFERENCE MODEL RECEIVED DATE:

Architecture Model 1 Received on: 17-07-23

Key Plan:



Brisbane
Level 7, 200 Creek Street
Brisbane, QLD 4000

hello@introba.com
www.introba.com

**LUMINA OPEN
SPACE**

SOUTHPORT, QLD
4215

HYDRAULIC SERVICES
WATER LAYOUT SHEET 4

DRAWING REPRODUCTION

THIS SET OF DOCUMENTS CONTAINS DRAWINGS THAT HAVE BEEN CREATED IN COLOUR.
REPRODUCTIONS MUST BE MADE IN COLOUR TO AVOID LOSS OF INFORMATION.

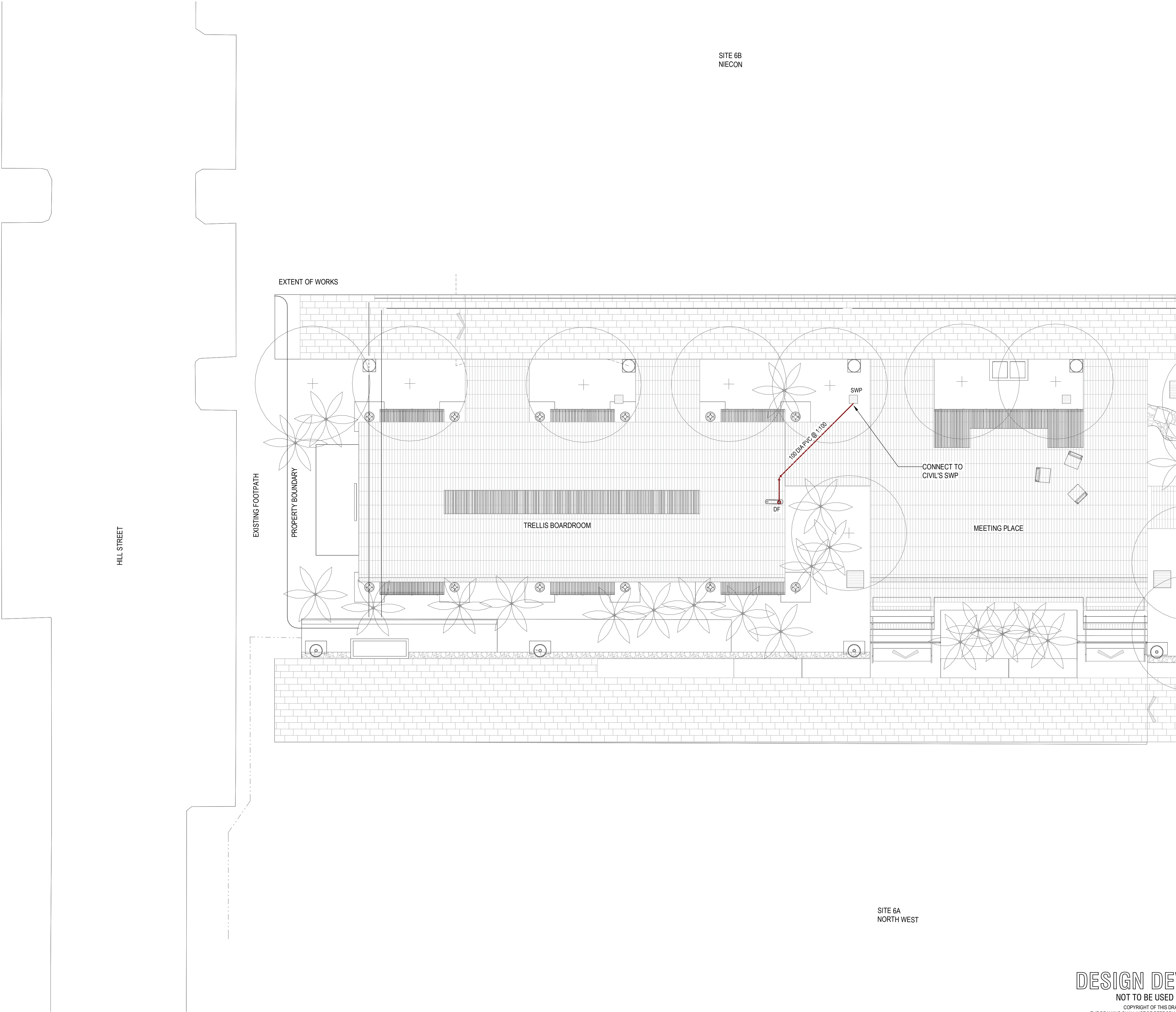
FOR BLACK & WHITE PRINTING PLEASE CONTACT INTROBA FOR A REVISED SET OF
BLACK & WHITE SPECIFIC DOCUMENTS.

DRAWN	CS	DATE	21-07-23
DESIGN	AK	SCALE	1 : 100 @A1
CHECKED	JDG	PLOT RATIO	1 / A1
APPROVED	DS	PROJECT No	62.0010071
62.0010071-H-1004			5

21/07/2023 16:42:39 Autodesk Docs://62.0010071 - Lumina Open Space/62.0010071_MEP_R22.rvt

NOTES

1. REFER TO DRAWING H-0001 FOR LEGEND AND GENERAL NOTES



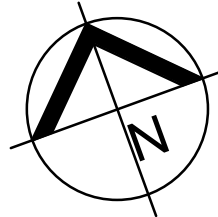
FOR CONTINUATION REFER TO DRAWING H-2002

DESIGN DEVELOPMENT

NOT TO BE USED FOR CONSTRUCTION

COPYRIGHT OF THIS DRAWING IS VESTED IN INTROBA. THE DRAWING SHALL NOT BE REPRODUCED OR COPIED IN WHOLE OR IN PART IN ANY FORM, WITHOUT THE PRIOR WRITTEN APPROVAL OF INTROBA.

CONTRACTOR MUST VISIT SITE BEFORE TENDERING



No.	DATE	REVISION	BY
1	06-04-23	50% DESIGN DEVELOPMENT DRAFT	DDS
2	18-04-23	50% DESIGN DEVELOPMENT	DDS
3	17-05-23	90% DESIGN DEVELOPMENT	VL
4	26-05-23	95% DESIGN DEVELOPMENT CLIENT ISSUE	VL
5	21-07-23	100% DESIGN DEVELOPMENT ISSUE	VL

Client:



Economic Development Queensland (EDQ)

Architect:



Hassell

Hassell LTD ABN 24 007 711 435
Level2, Pier 8/9,23 Hickson Rd
Sydney NSW 2000 Australia
T +61 2 9101 2000
F +61 2 9101 2100
sydney@hassellstudio.com

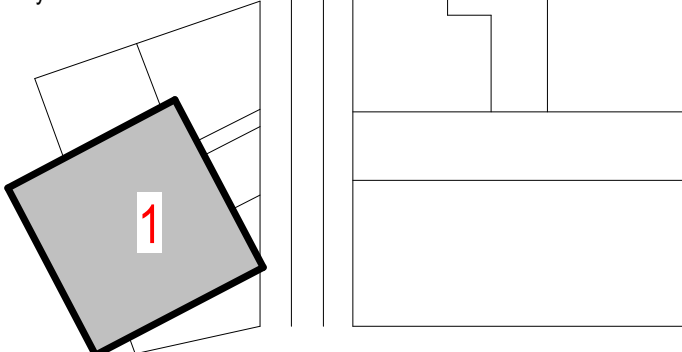
Scale 1:100



REFERENCE MODEL RECEIVED DATE:

Architecture Model 1 Received on: 17-07-23

Key Plan:



Brisbane
Level 7, 200 Creek Street
Brisbane, QLD 4000

hello@introba.com
www.introba.com

LUMINA OPEN SPACE

SOUTHPORT, QLD
4215

HYDRAULIC SERVICES
DRAINAGE LAYOUT SHEET 1

DRAWING REPRODUCTION

THIS SET OF DOCUMENTS CONTAINS DRAWINGS THAT HAVE BEEN CREATED IN COLOUR. REPRODUCTIONS MUST BE MADE IN COLOUR TO AVOID LOSS OF INFORMATION. FOR BLACK & WHITE PRINTING PLEASE CONTACT INTROBA FOR A REVISED SET OF BLACK & WHITE SPECIFIC DOCUMENTS.

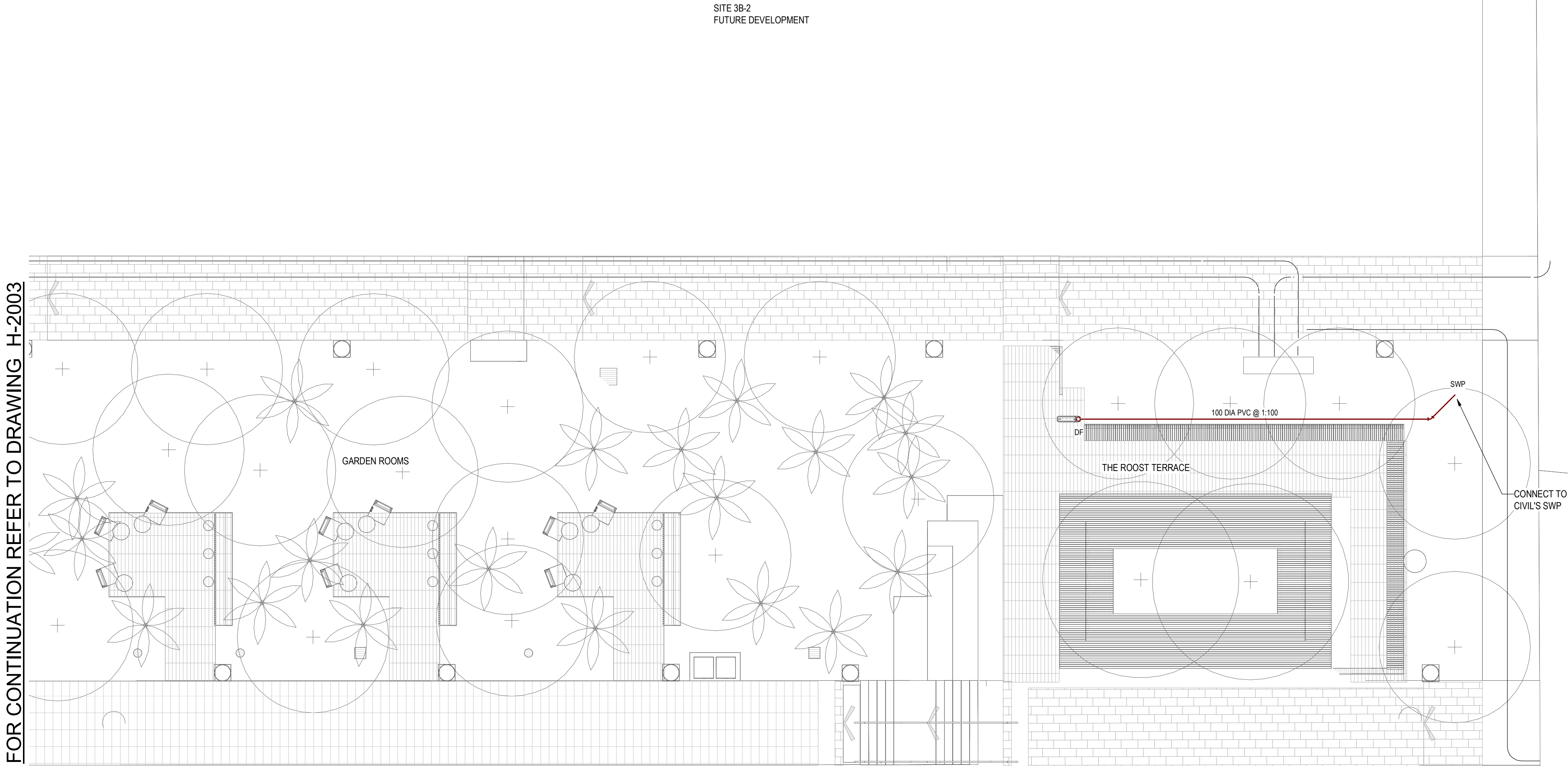
DRAWN	CS	DATE	21-07-23
DESIGN	AK	SCALE	1 : 100 @A1
CHECKED	JDG	PLOT RATIO	1 / A1
APPROVED	DS	PROJECT No	62.0010071

62.0010071-H-2001

5

NOTES

1. REFER TO DRAWING H-0001 FOR LEGEND AND GENERAL NOTES

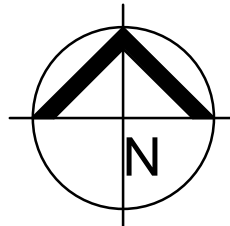


DESIGN DEVELOPMENT

NOT TO BE USED FOR CONSTRUCTION

COPYRIGHT OF THIS DRAWING IS VESTED IN INTROBA.
THE DRAWING SHALL NOT BE REPRODUCED OR COPIED IN WHOLE OR IN PART IN ANY FORM WITHOUT THE PRIOR WRITTEN APPROVAL OF INTROBA.

CONTRACTOR MUST VISIT SITE BEFORE TENDERING



No.	DATE	REVISION	BY
1	06-04-23	50% DESIGN DEVELOPMENT DRAFT	DDS
2	18-04-23	50% DESIGN DEVELOPMENT	DDS
3	17-05-23	90% DESIGN DEVELOPMENT	VL
4	26-05-23	95% DESIGN DEVELOPMENT CLIENT ISSUE	VL
5	21-07-23	100% DESIGN DEVELOPMENT ISSUE	VL

Client:



Economic Development Queensland (EDQ)

Architect:



Hassell

Hassell LTD ABN 24 007 711 435
Level 2, Pier 8/9, 23 Hickson Rd
Sydney NSW 2000 Australia
T +61 2 9101 2000
F +61 2 9101 2100
sydney@hassellstudio.com

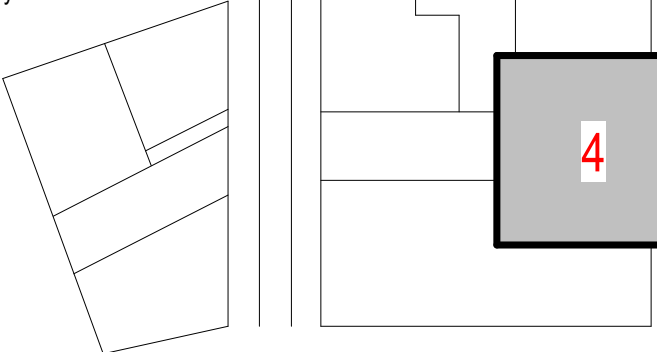
Scale 1:100



REFERENCE MODEL RECEIVED DATE:

Architecture Model 1 Received on: 17-07-23

Key Plan:



Brisbane
Level 7, 200 Creek Street
Brisbane, QLD 4000

hello@introba.com
www.introba.com

LUMINA OPEN SPACE

SOUTHPORT, QLD
4215

HYDRAULIC SERVICES
DRAINAGE LAYOUT SHEET 4

DRAWING REPRODUCTION

THIS SET OF DOCUMENTS CONTAINS DRAWINGS THAT HAVE BEEN CREATED IN COLOUR.
REPRODUCTIONS MUST BE MADE IN COLOUR TO AVOID LOSS OF INFORMATION.
FOR BLACK & WHITE PRINTING PLEASE CONTACT INTROBA FOR A REVISED SET OF
BLACK & WHITE SPECIFIC DOCUMENTS.

DRAWN	CS	DATE	21-07-23
DESIGN	AK	SCALE	1 : 100 @A1
CHECKED	JDG	PLOT RATIO	1 / A1
APPROVED	DS	PROJECT No	62.0010071

62.0010071-H-2004

5