

P1 CSR 1086 FRL 120/120/120 RW 54
SIDE ONE: 2 x 16mm Gyprock Fyrchek MR Plasterboard
STUD: 92mm w/ 11kg m² Insulation
SIDE TWO: 2 x 16mm Gyprock Fyrchek Plasterboard

P2 CSR 1065 FRL 60/60/60 RW 47
SIDE ONE: 1 x 16mm Gyprock Fyrchek Plasterboard
STUD: 92mm w/ 11kg m² Insulation
SIDE TWO: 1 x 16mm Gyprock Fyrchek Plasterboard

ALL NEW PARTITIONS FULL HEIGHT TO UNDERSIDE
OF EXISTING SOFFIT & FULL SEAL TO ALL EXISTING
SERVICES PASSING THROUGH WALL.

P4 CSR 1078
SIDE ONE: 2 x 13mm Gyprock Fyrchek MR Plasterboard
STUD: 92mm w/ 60 Soundscreen Acoustic Insulation
SIDE TWO: 2 x 13mm Gyprock Fyrchek Plasterboard

P5 CSR 1040
SIDE ONE: 1 x 13mm Gyprock Standard Plasterboard
STUD: 92mm w/ 60 Soundscreen Acoustic Insulation
SIDE TWO: 2 x 13mm Gyprock Standard Plasterboard

BLK 190mm CONCRETE BLOCK CORE FILLED
FRL 240/240/240 FIRE RATED SEAL TO ALL
PENETRATIONS

LEGEND

CT CERAMIC TILE AS SELECTED
PBP PLASTERBOARD LINING - PAINT FINISH
TS TIMBER SKIRTING 90x10mm - PAINT FINISH
FRD FIRE RATED DOOR
SCD SOLID CORE DOOR
FH FIRE HYDRANT
FHR FIRE HOSE REEL
BOLL 1350mm HIGH STEEL BOLLARD. 140mm DIA.
YELLOW PAINT FINISH. SURFACE MOUNT.

A PYROPANEL DUAL SWING FIRE
RATED DOORS -/120/60 RATINGS
E EXIT
HE HORIZONTAL EXIT
VSF VINYL SHEET FLOORING
THR THRESHOLD STRIP RP98.
19mm RISE OVER 150mm
LEVEL TRANSITION
THROUGH DOORWAY

BASEMENT - D.09						
DOOR NO.	LEVEL	LOCATION	Operation	DIMENSIONS		REMARKS
				HEIGHT	WIDTH	
B.11	BASEMENT		ROLLER SHUTTER DOOR	2350	4500	C.O.S

NOTE 1. CEMENTITIOUS TOPPING TO BE
APPLIED TO TENANCY AREA TO ACHIEVE
LEVEL FLOOR SURFACE TO ROOMS AS NOTED.

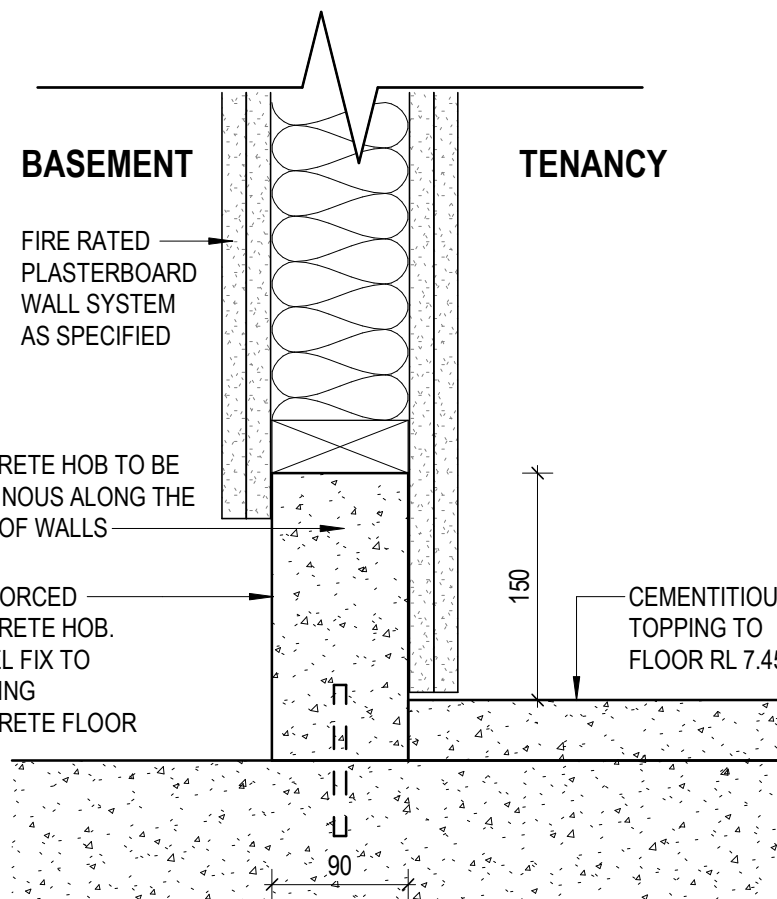
NOTE 2. NON-SLIP PAINT FINISH

NOTE 3. MOTORISED ROLLER SHUTTER WITH
ACCESS CONTROL & FAIL SAFE RELEASABLE.
REFER ELECTRICAL CONSULTANT
DOCUMENTS.

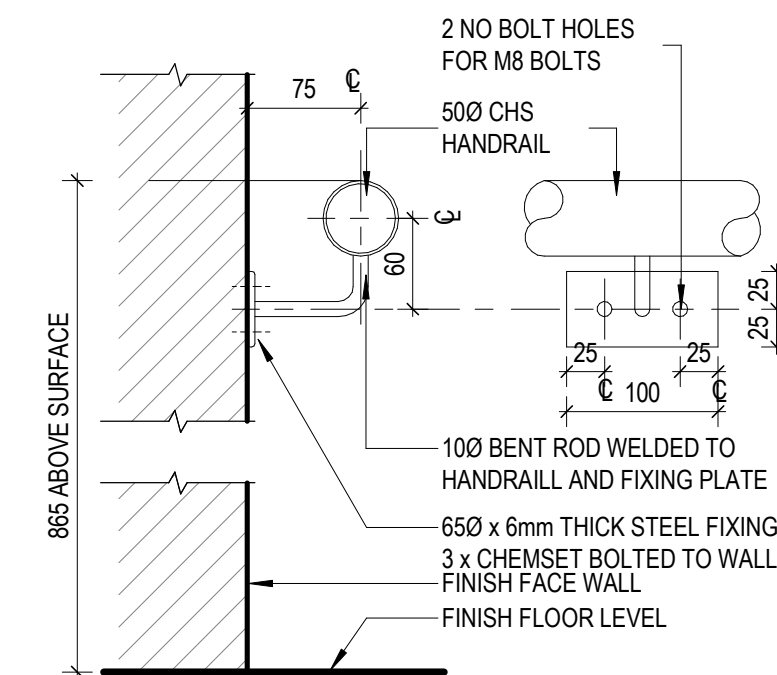
BASEMENT - D.01							
DOOR NO.	LEVEL	LOCATION	Operation	DIMENSIONS		REMARKS	HARDWARE
				HEIGHT	WIDTH		
B.09	BASEMENT	MED GAS STORE	SWING, SINGLE RD	2040	920	TO SUIT WALL WITH FRL 240/240/240	

BASEMENT - D.02							
DOOR NO.	LEVEL	LOCATION	Operation	DIMENSIONS			REMARKS
				HEIGHT	LEAF 1	LEAF 2	
B.02	BASEMENT	STORE	FRD, SWING, DOUBLE	2040	920	920	TO SUIT WALL WITH FRL 60/60/60
B.03	BASEMENT		FRD, SWING, DOUBLE	2040	920	920	TO SUIT WALL WITH FRL 60/60/60
B.04	BASEMENT	NEW TENANCY PLANT	FRD, SWING, DOUBLE	2040	920	920	TO SUIT WALL WITH FRL 60/60/60
B.10	BASEMENT	MED GAS STORE	FRD, SWING, DOUBLE	2040	920	920	TO SUIT WALL WITH FRL 240/240/240
B.34	BASEMENT	STORE	FRD, SWING, DOUBLE	2040	920	920	

BASEMENT - D.07							
DOOR NO.	LEVEL	LOCATION	Operation	DIMENSIONS			REMARKS
				HEIGHT	LEAF 1	LEAF 2	
B.08	BASEMENT	TENANCY 1	SLIDING, SINGLE (O)	2500			
5	BASEMENT	TENANCY 1	AUTO SLIDING, DOUBLE	2350			NOTE: CLEARANCE FOR EQUIPMENT 2.0m WIDE x 2.2m HIGH THROUGH OPENING REQUIRED.

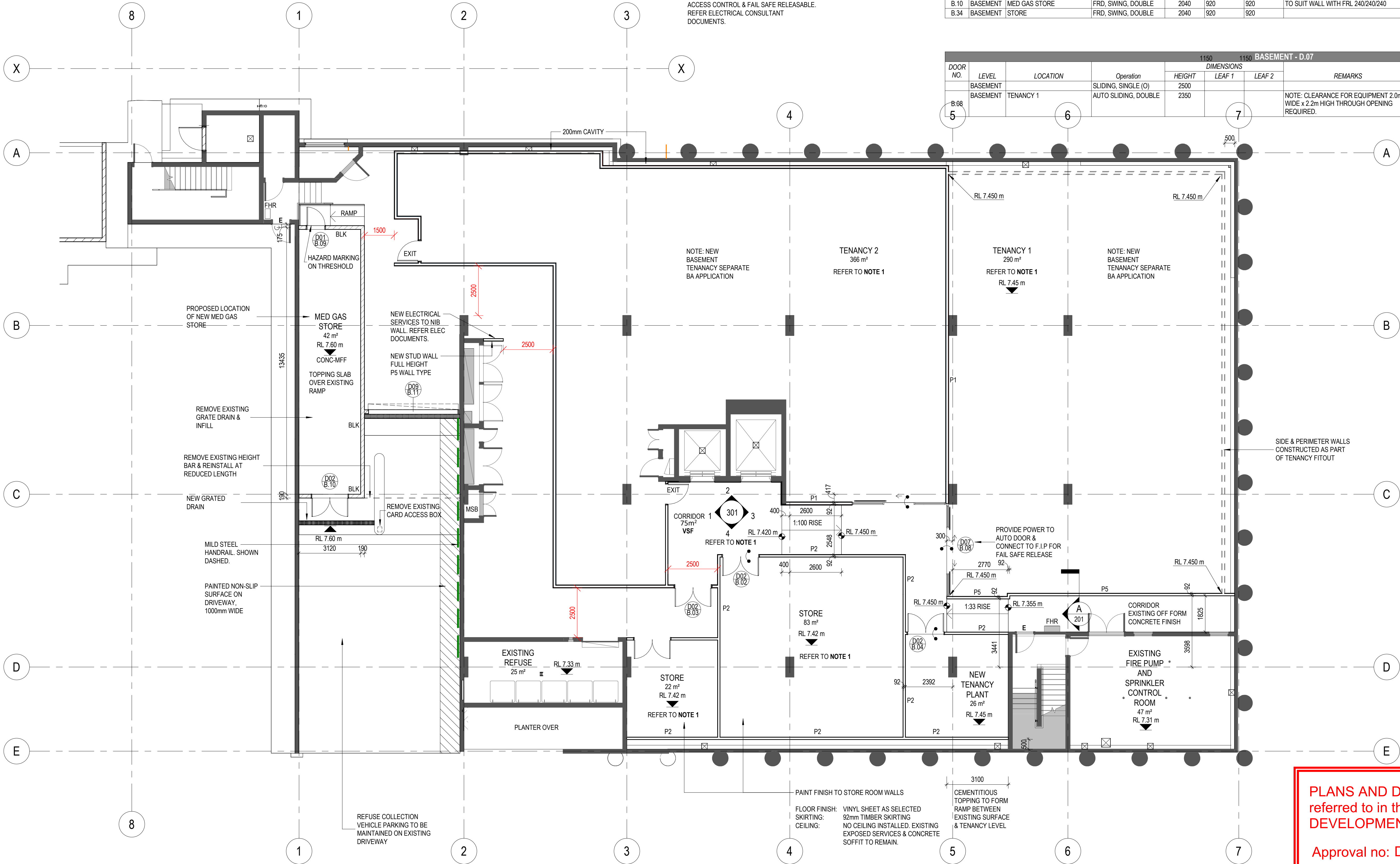


A CONCRETE HOB DETAIL
1:5

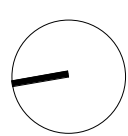


NOTE: ALL STELL HOT
DIPPED GALVANISED
FINISH

B HANDRAIL BRACKET DETAIL
1:5



0 1 2 3 5 10m



4 23.04.2024 BASEMENT TENANCY 2 UPDATE PG
3 05.04.2024 BASEMENT UPDATE PG
2 06.03.2024 CD ISSUE - UPDATE PG
1 29.02.2024 CD ISSUE PG

WREN STREET MIXED USE DEVELOPMENT

7, 7A & 9-13 Wren St, Bowen Hills, QLD

WREN STREET HEALTH INVESTMENTS PTY LTD

© Copyright
These drawings and designs and the copyright
thereof are the property of Thomson Adsett Pty
Ltd and must not be used, retained or copied
without written permission of Thomson Adsett
Pty Ltd. ABN 76 105 314 654 Trading as
ThomsonAdsett. Dimensions take precedence
over scaling. Do not measure off drawings as
print sizes may vary

Telephone +61 7 3840 9999
bne@thomsonadsett.com
128 Robertson Street
Fortitude Valley
Qld 4006 Australia
thomsonadsett.com

thomson
adsett

TA # 23.0144.17

FLOOR PLAN - BASEMENT

As indicated @ A1

CD-201

23.04.2024

rev. 4

PLANS AND DOCUMENTS
referred to in the PDA
DEVELOPMENT APPROVAL

Approval no: DEV2014/635/23
Date: 11 September 2024

