

BRISBANE CITY COUNCIL

7-15 WREN STREET, BOWEN HILLS 4006

LOT 23 on RP9941 & LOT 24 on SP276528



SITE LOCATION
NTS

DRAWING INDEX		
DRAWING No.	DRAWING TITLE	REVISION
2303-010-SK001	COVER SHEET & DRAWING INDEX	B
2303-010-SK002	LOWER GROUND FLOOR PLANTING PLAN	B
2303-010-SK003	GROUND FLOOR LOBBY PLANTING PLAN	B
2303-010-SK004	LEVEL 11 - UNITS & COMMUNAL AREAS PLANTING PLAN	B
2303-010-SK005	LEVEL 12 - UNITS & COMMUNAL AREAS PLANTING PLAN	B
2303-010-SK006	LEVEL 30 - SKY GARDEN PLANTING PLAN	B
2303-010-SK010	PODIUM PLANTER STRUCTURE DIAGRAMS	B
2303-010-SK011	TYPICAL PODIUM PLANTER DETAILS	B
2303-010-SK020	SECTIONS	B
2303-010-SK030	PLANTING SPECIES SCHEDULES, IMAGES & NOTES	B

PRELIMINARY

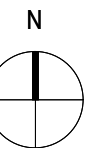
rev	description	drawn	date
B	REVISED ISSUE	JC	01.09.23
A	INITIAL ISSUE	JC	30.08.23

WREN STREET HEALTH INVESTMENTS PTY LTD
7-15 WREN STREET, BOWEN HILLS
LANDSCAPE CONCEPT PLAN
COVER SHEET & DRAWING INDEX

LAUD ink
landscape architecture and urban design

Office 7, 915 Ann Street, Fortitude Valley, QLD 4006
E: elaas@laudink.com.au / jane@laudink.com.au
W: www.laudink.com.au

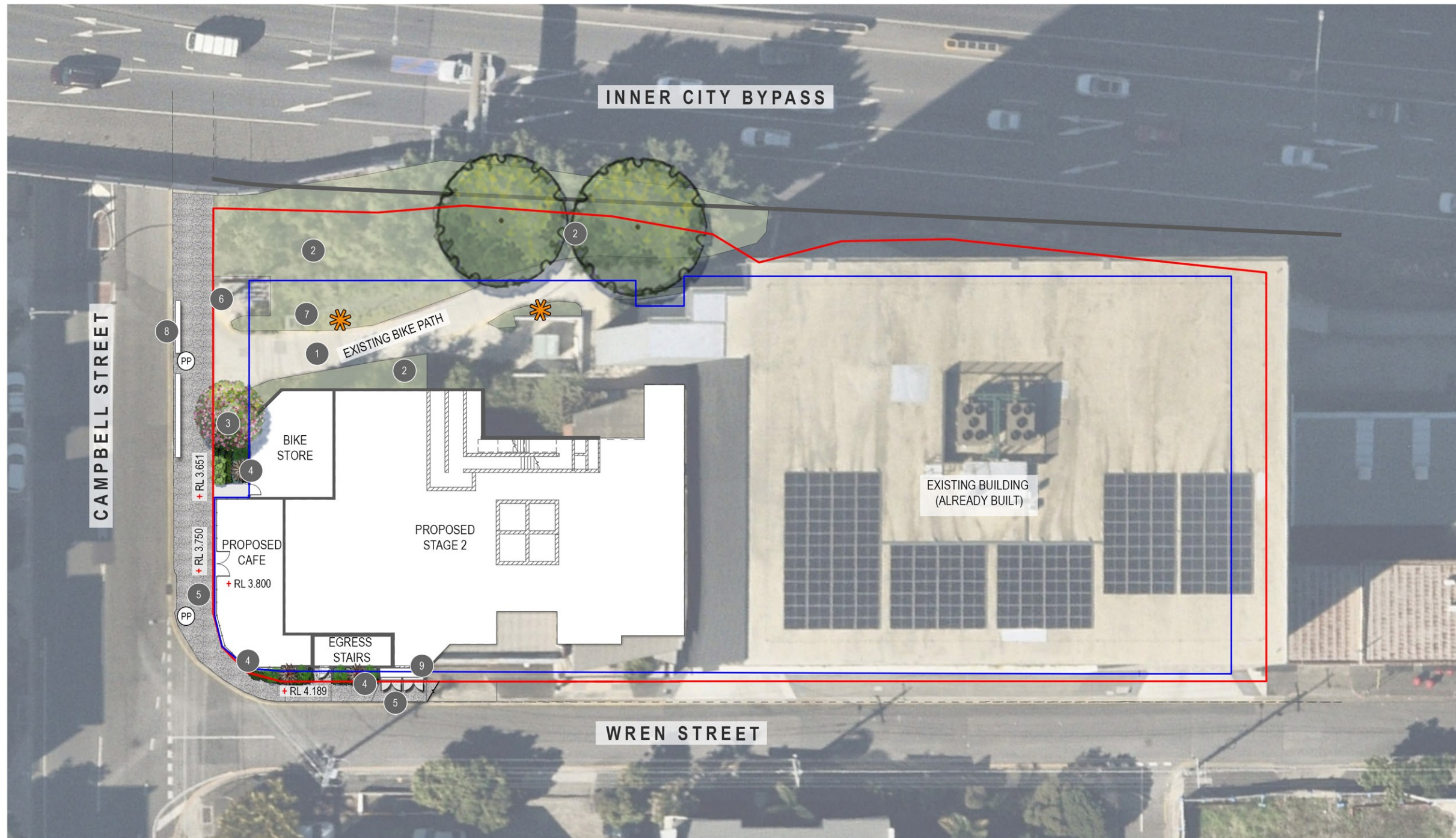
ABN 80 169 838 144



Conditions of Use: This document may only be used by LAUD ink's client (and any other person who LAUD ink has agreed can use this document) for the purpose for which it was prepared and must not be used by any other person or for any other purpose.

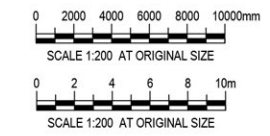
scale | NTS for A1 job no. | 2303-010
date | SEP 2023 rev no. | B

approved... E. NICHOLAOU* SK001



- LEGEND**
- EXISTING TREES
 - PROPOSED FEATURE TREES
 - PROPOSED SHRUB AND LOW LEVEL PLANTING
 - PROPOSED GROUNDCOVER PLANTING
 - PROPOSED CASCADING PLANTING
 - BUILDING LINE OVER
 - PROPERTY BOUNDARY
 - + RL 14.800 PROPOSED LEVEL
 - x 18.56 EXISTING SURVEY LEVEL
 - EXISTING BIKE PATH LIGHTPOLES

- NOTES**
1. REFER TO DRG 2303-010-SK030 FOR PLANT SPECIES SCHEDULE, IMAGES AND GENERAL NOTES
 2. REFER ARCHITECTS DRGS FOR ALL FENCE DETAILS
 3. REFER CIVIL ENGINEERS DRGS FOR ALL RETAINING WALL DETAILS



PRELIMINARY

B	REVISED ISSUE	JC	01.09.23
A	INITIAL ISSUE	JC	30.08.23
rev	description	drawn	date

WREN STREET HEALTH INVESTMENTS PTY LTD
 7-15 WREN STREET, BOWEN HILLS
LANDSCAPE CONCEPT PLAN
LOWER GROUND FLOOR PLANTING PLAN

LAUD ink
 landscape architecture and urban design

Office 7, 915 Ann Street, Fortitude Valley, QLD 4006
 E: elias@laudink.com.au / jane@laudink.com.au
 W: www.laudink.com.au
 ABN 80 169 838 144

Conditions of Use: This document may only be used by LAUD ink's client (and any other person who LAUD ink has agreed can use this document) for the purpose for which it was prepared and must not be used by any other person or for any other purpose.

scale | 1:200 for A1 job no. | 2303-010
 date | SEP 2023 rev no. | B

approved E. NICHOLAOU* **SK002**

ANNOTATION NOTES

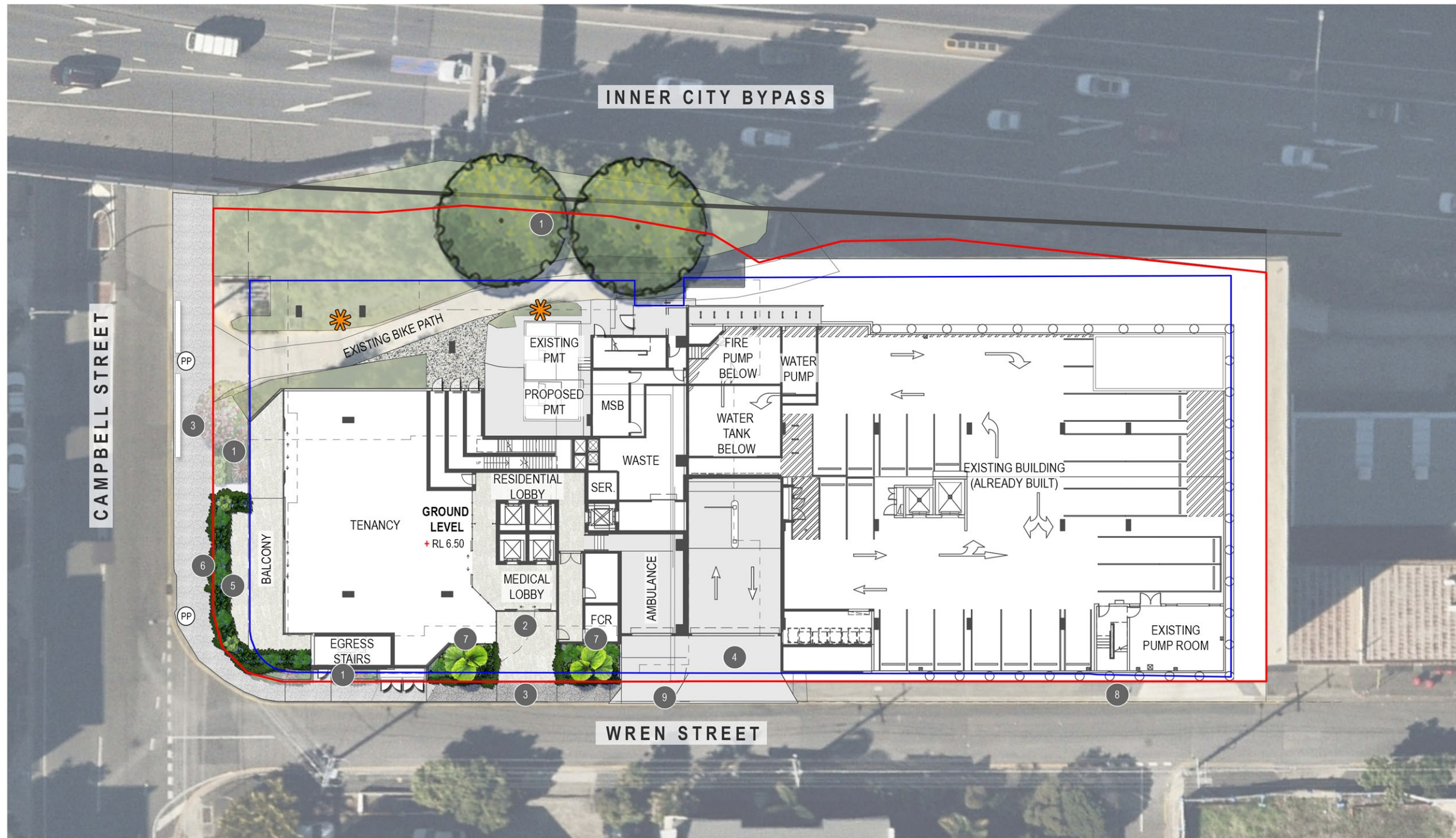
- 1 EXISTING BIKE PATH TO BE RETAINED. MAKE GOOD IF DAMAGED
- 2 EXISTING VEGETATION TO BE REINSTATED WHERE IMPACTED BY BUILDING WORKS. REINSTATED VEGETATION TO CONSIST OF SHADE TOLERANT SHRUBS ASP ela, MON del, PHI XAN AND RHA exc WITH GROUNDCOVERS CIS ant TO PROVIDE FULL COVERAGE OF GARDEN BEDS. GARDEN BEDS TO BE REMULCHED WHERE REQUIRED
- 3 FEATURE TREE TAB pal TO BUFFER EXISTING BIKE PATH AND SOFTEN CAMPBELL STREET FRONTAGE. TREE TO BE UNDERPLANTED WITH SHRUBS ALO cal, ALP mut, CAR mac, COR rub AND GROUNDCOVERS CAR gla, DIE gra, SEN man AND ZOY ten
- 4 PODIUM PLANTER TO INCLUDE SHRUBS ALC RUB, HEL HRN WITH CASCADING GROUNDCOVERS CAS CI AND DIC SF
- 5 PROPOSED FULL WIDTH PAVEMENT VICTORIA FALLS EXPOSED AGGREGATE (HANSON, BORAL OR APPROVED EQUIVALENT) AS PER BCC STREETScape HIERARCHY REQUIREMENTS - CENTRE STREET MINOR
- 6 EXISTING WATER MAINS AND METERS
- 7 EXISTING STORMWATER PIT
- 8 EXISTING FENCE
- 9 PROPOSED HYDRANT BOOSTER

PLAN
 SCALE 1:200

CHARACTER REFERENCE IMAGES

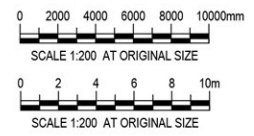


1. EXISTING BIKE PATH VIEWED FROM CAMPBELL STREET FRONTAGE



- LEGEND**
- PROPOSED FEATURE TREES
 - PROPOSED SHRUB AND LOW LEVEL PLANTING
 - PROPOSED GROUNDCOVER PLANTING
 - PROPOSED CASCADING PLANTING
 - HARDSTAND SURFACE FINISH TO PEDESTRIAN PRIORITY PATHWAY
 - CONCRETE AREA - REFER CIVIL ENGINEERS DRGS FOR DETAILS
 - PAVED AREA - REFER ARCHITECTS DRGS FOR DETAILS
 - BUILDING LINE OVER
 - PROPERTY BOUNDARY
 - + RL 14.800 PROPOSED LEVEL
 - x 18.56 EXISTING SURVEY LEVEL

- NOTES**
1. REFER TO DRG 2303-010-SK030 FOR PLANT SPECIES SCHEDULE, IMAGES AND GENERAL NOTES
 2. REFER ARCHITECTS DRGS FOR ALL FENCE DETAILS
 3. REFER TO DRG 2303-010-SK011 FOR TYPICAL PODIUM PLANTER DETAILS



PRELIMINARY

B	REVISED ISSUE	JC	01.09.23
A	INITIAL ISSUE	JC	30.08.23
rev	description	drawn	date

WREN STREET HEALTH INVESTMENTS PTY LTD
 7-15 WREN STREET, BOWEN HILLS
LANDSCAPE CONCEPT PLAN
GROUND FLOOR LOBBY PLANTING PLAN

LAUD ink
 landscape architecture and urban design

Office 7, 915 Ann Street, Fortitude Valley, QLD 4006
 E. ela@laudink.com.au / jane@laudink.com.au
 W www.laudink.com.au

ABN 80 169 838 144

Conditions of Use: This document may only be used by LAUD ink's client (and any other person who LAUD ink has agreed can use this document) for the purpose for which it was prepared and must not be used by any other person or for any other purpose.

scale | 1:200 for A1 job no. | 2303-010
 date | SEP 2023 rev no. | B

approved E. NICHOLAOU* **SK003**

ANNOTATION NOTES

- 1 REFER TO DRAWING 2303-010-SK002 FOR LOWER GROUND FLOOR PLANTING PLAN DETAILS
- 2 MAIN PEDESTRIAN ENTRY / EXIT
- 3 PROPOSED FULL WIDTH PAVEMENT VICTORIA FALLS EXPOSED AGGREGATE (HANSON, BORAL OR APPROVED EQUIVALENT) AS PER BCC STREETScape HIERARCHY REQUIREMENTS - CENTRE STREET MINOR
- 4 REFER TO CIVIL ENGINEERS DRAWINGS FOR EXISTING CROSSOVER TO BE RETAINED DETAILS
- 5 BALCONY PODIUM PLANTER TO INCLUDE SHRUBS PHI XAN AND ZAM fur WITH GROUNDCOVERS LIR JR AND SEN man
- 6 CASCADING SPECIES APT cor AND CAS CI TO BE POSITIONED AT EDGE OF BALCONY PLANTERS TO SOFTEN STREETScape INTERFACE AND BUILT FORM
- 7 FEATURE PALMS LIC gra TO DEFINE MAIN ENTRANCE AND SOFTEN HARDSTAND. PALMS TO BE UNDERPLANTED WITH SHRUBS ALO cal, ASP ela, PHI XAN, PIT MM AND ZAM fur, AND GROUNDCOVERS APT cor, CAR gla, CRA und, LIR JR AND OPH NAN
- 8 EXISTING FULL WIDTH PAVEMENT FOOTPATH AND CROSSOVER TO BE RETAINED
- 9 PROPOSED CROSSOVER EXTENSION FOR AMBLUANCE STOPPING BAY - REFER TO CIVIL DRAWINGS FOR DETAILS

PLAN
 SCALE 1:200



CHRACTER REFERENCE IMAGES



1. FEATURE PALMS LIC gra WITH LUSH TROPICAL UNDERPLANTING TO BE PLANTED IN RAISED PLANTER WITH CASCADING PLANTS TO SOFTEN WALLS AND DEFINING MAIN PEDESTRIAN ENTRANCE
2. BALCONY PLANTERS TO FEATURE CASCADING SPECEIS POSITIONED AT EDGE OF PLANTER TO SOFTEN TENANCY BELOW AND STREETScape INTERFACE

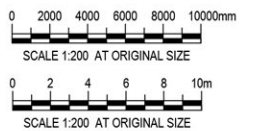


LEGEND

-  PROPOSED SHRUB AND LOW LEVEL PLANTING
-  PROPOSED GROUNDCOVER PLANTING
-  PROPOSED BUFFER PLANTING
-  PROPOSED CASCADING PLANTING
-  PAVED AREA - REFER ARCHITECTS DRGS FOR DETAILS
-  BUILDING LINE OVER
-  PROPERTY BOUNDARY
-  + RL 14.800 PROPOSED LEVEL

NOTES

1. REFER TO DRG 2303-010-SK030 FOR PLANT SPECIES SCHEDULE, IMAGES AND GENERAL NOTES
2. REFER ARCHITECTS DRGS FOR ALL FENCE DETAILS
3. REFER TO DRG 2303-010-SK011 FOR TYPICAL PODIUM PLANTER DETAILS



PRELIMINARY

B	REVISED ISSUE	JC	01.09.23
A	INITIAL ISSUE	JC	30.08.23
rev	description	drawn	date

WREN STREET HEALTH INVESTMENTS PTY LTD
 7-15 WREN STREET, BOWEN HILLS
LANDSCAPE CONCEPT PLAN
 LEVEL 11 - UNITS & COMMUNAL AREAS PLANTING PLAN

LAUD ink
 landscape architecture and urban design

Office 7, 915 Ann Street, Fortitude Valley, QLD 4006
 E: enquiries@laudink.com.au / jane@laudink.com.au
 W: www.laudink.com.au

ABN 80 169 838 144



Conditions of Use: This document may only be used by LAUD ink's client (and any other person who LAUD ink has agreed can use this document) for the purpose for which it was prepared and must not be used by any other person or for any other purpose.

scale | 1:200 for A1 job no. | 2303-010
 date | SEP 2023 rev no. | B

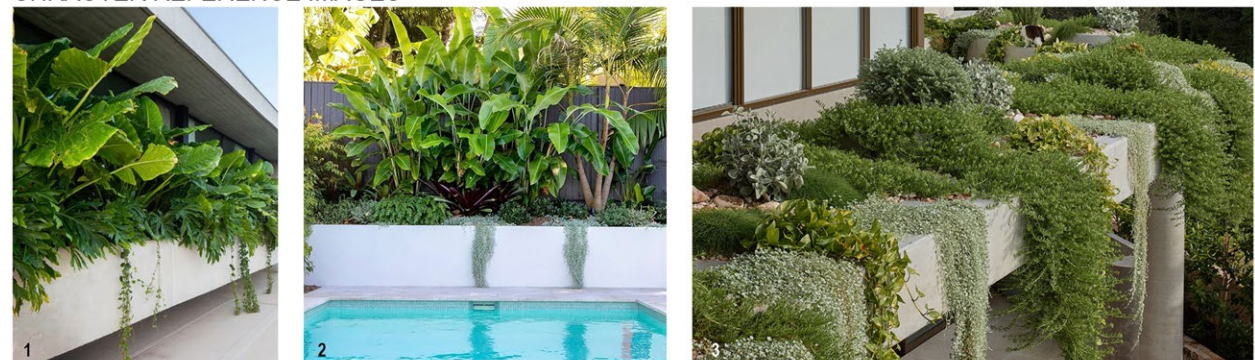
approved E. NICHOLAOU* **SK004**

PLAN
 SCALE 1:200

ANNOTATION NOTES

- 1 REFER TO DRAWING 2303-010-SK002 - SK003 FOR LOWER LEVEL PLANTING PLAN DETAILS
- 2 FEATURE SCREENING SHRUBS ALO cal AND HEL HRN TO DEFINE LOWER COMMUNAL OPEN SPACE AND PROVIDE GREEN SCREEN TO PLANT / BUFFER BUILT FORM. SHRUBS TO BE UNDERPLANTED WITH PHI XAN AND CASCADING SPECIES CAS CI AND DIC SF TO SOFTEN PLANTER WALLS
- 3 A COMBINATION OF TROPICAL SHRUBS ALC rub, ALO ca, ALP mut, CAR mac, CRA ova, STR reg AND ZAM fur TO DEFINE POOL AND SOFTEN HARDSTAND. SHRUBS TO BE UNDERPLANTED WITH GROUNDCOVERS CAR glau, CRA und, SEN cra, SEN man AND ZOY ten
- 4 INDICATIVE OUTDOOR FURNITURE TO ACTIVATE LOWER COMMUNAL OPEN SPACE PROVIDING OPPORTUNITIES FOR SOCIALISATION, RELAXATION AND RECREATION

CHARACTER REFERENCE IMAGES

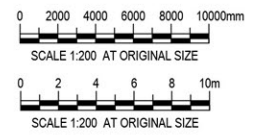


1. FEATURE SCREENING TROPICAL SHRUBS WITH CASCADING SPECIES IN PODIUM PLANTER TO PROVIDE BUFFERING AND SOFTEN HARDSTAND
2. A COMBINATION OF TROPICAL SHRUBS TO CREATE A LAYERED AND TEXTURED LANDSCAPE BUFFER AND VISUAL AMENITY TO POOL
3. CASCADING SPECIES TO SOFTEN PLANTER WALLS AND CASCADE OVER BUILDING EDGE TO PROVIDE VERTICAL GREENING / SOFTENING



- LEGEND**
- PROPOSED FEATURE TREES
 - PROPOSED SHRUB AND LOW LEVEL PLANTING
 - PROPOSED GROUNDCOVER PLANTING
 - PROPOSED BUFFER PLANTING
 - PROPOSED CASCADING PLANTING
 - SYNTHETIC TURF
 - PAVED AREA - REFER ARCHITECTS DRGS FOR DETAILS
 - BUILT-IN TIMBER BENCH SEATING
 - BUILDING LINE OVER
 - PROPERTY BOUNDARY
 - + RL 14.800 PROPOSED LEVEL

- NOTES**
1. REFER TO DRG 2303-010-SK030 FOR PLANT SPECIES SCHEDULE, IMAGES AND GENERAL NOTES
 2. REFER ARCHITECTS DRGS FOR ALL FENCE DETAILS
 3. REFER TO DRG 2303-010-SK011 FOR TYPICAL PODIUM PLANTER DETAILS



PRELIMINARY

B	REVISED ISSUE	JC	01.09.23
A	INITIAL ISSUE	JC	30.08.23
rev	description	drawn	date

WREN STREET HEALTH INVESTMENTS PTY LTD
 7-15 WREN STREET, BOWEN HILLS
LANDSCAPE CONCEPT PLAN
 LEVEL 12 - UNITS & COMMUNAL AREAS PLANTING PLAN

LAUD ink
 landscape architecture and urban design

Office 7, 915 Ann Street, Fortitude Valley, QLD 4006
 E. eilas@laudink.com.au / jane@laudink.com.au
 W www.laudink.com.au

ABN 80 169 838 144

Conditions of Use: This document may only be used by LAUD ink's client (and any other person who LAUD ink has agreed can use this document) for the purpose for which it was prepared and must not be used by any other person or for any other purpose.

scale 1:200 for A1 job no. 2303-010
 date SEP 2023 rev no. B

approved E. NICHOLAOU* **SK005**

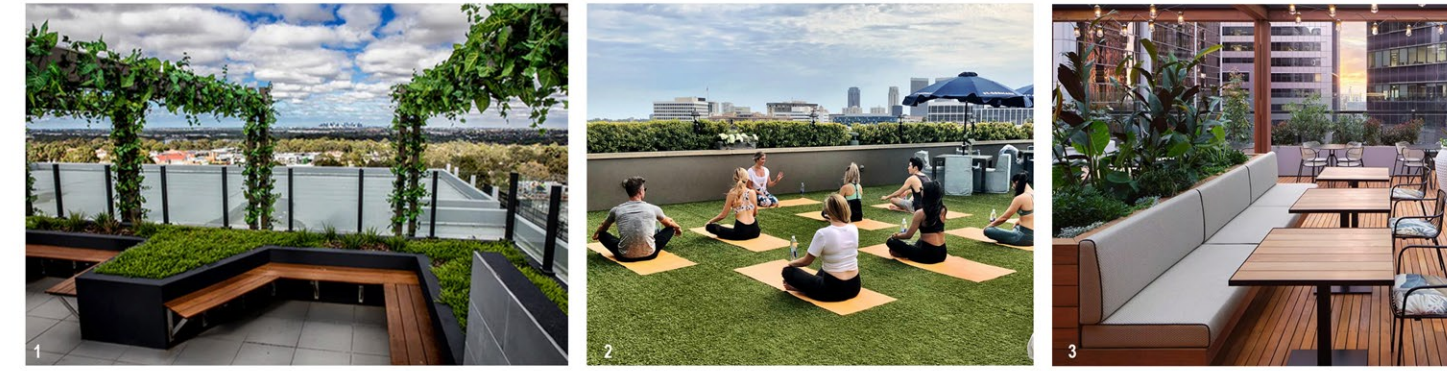
ANNOTATION NOTES

- 1 REFER TO DRAWING 2303-010-SK002 - SK004 FOR LOWER LEVEL PLANTING PLAN DETAILS
- 2 FEATURE SCREENING PALMS LIC gra AND SHRUBS HEL HRN TO BUFFER INTERFACE BETWEEN UNIT POS AND COS PROVIDING AMENITY AND MAINTAINING PRIVACY. SHRUBS TO BE UNDERPLANTED WITH PHI XAN AND DIC SF TO ENSURE DENSE, GREEN SCREEN
- 3 A COMBINATION OF TROPICAL SHRUBS ALC rub, ALO ca, ALP mut, CAR mac, STR reg AND ZAM fur TO DEFINE COMMUNAL OPEN SPACE AND SOFTEN HARDSTAND. SHRUBS TO BE UNDERPLANTED WITH GROUNDCOVERS CAR gla, CRA und, SEN cra, SEN man AND ZOY ten
- 4 SMALL FEATURE TREES RAN fit TO DEFINE COS AND PROVIDE SHADED AMENITY. TREES TO BE UNDERPLANTED WITH GROUNDCOVERS DIC SF, SEN man AND ZOY ten

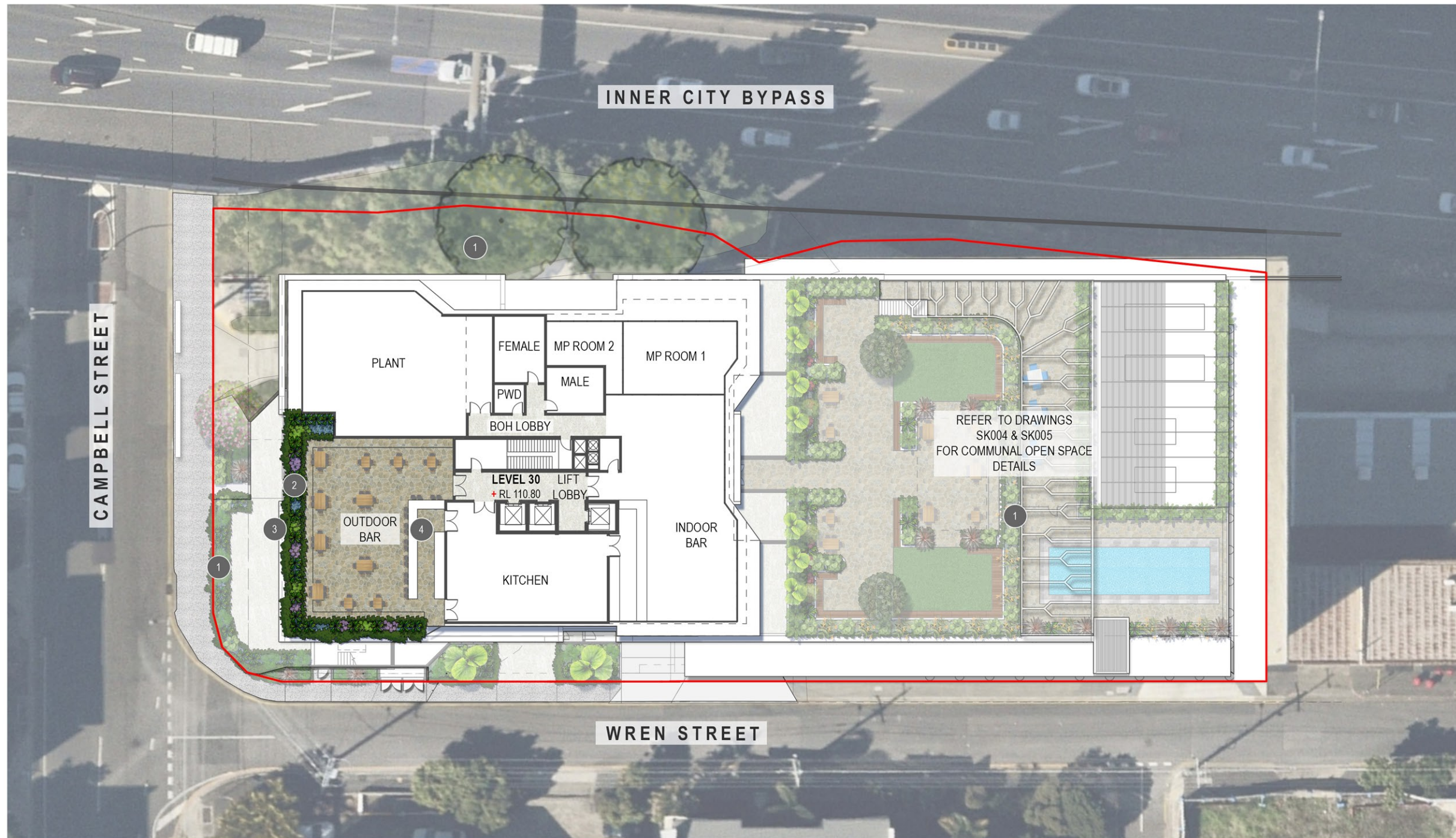
PLAN
 SCALE 1:200

- 5 TERRACED PLANTERS TO BE PLANTED WITH FEATURE SHRUBS ALO cal, CAR mac, ASP ela AND PIT MM WITH GROUNDCOVERS CAR gla, DIE gra, OPH nan AND PEP obt TO ENSURE DENSE, TIERED BUFFER BETWEEN UNIT POS AND COS
- 6 SMALL PLANTERS TO BE PLANTED WITH LOW MAINTENANCE AND HARDY SHRUBS ALC rub, ALP mut, CAR mac AND CRA ova WITH GROUNDCOVERS APT cor, CRA gla, CRA und, SAN tri and SEN cra. CLIMBING SPECIES CIS ant TO BE TRAINED TO PERGOLA TO PROVIDE VERTICAL GREENING
- 7 PERGOLA WITH OUTDOOR DINING / SEATING




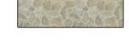


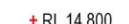
CHARACTER REFERENCE IMAGES



1. RAISED PLANTERS WITH BUILT IN SEATING TO CREATE POCKETS OF SPACES TO CATER FOR VARIOUS GROUP SIZES AND NEEDS E.G. FULL SUN AREAS AND DAPPLED SHADE AREAS
2. MULTI PURPOSE LAWN AREAS (SYNTHETIC TURF) WITH MOVEABLE SEATING TO PROVIDE OPPORTUNITIES FOR RECREATION AND SOCIALISATION E.G. OUTDOOR CINEMA, YOGA LAWN AND BOARD GAMES
3. A COMBINATION OF CASUAL SEATING AND DINING AREAS WITH TROPICAL PLANTING TO CREATE A LUSH AND SHADED ENVIRONMENT

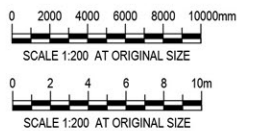


LEGEND

-  PROPOSED SHRUB AND LOW LEVEL PLANTING
-  PROPOSED GROUNDCOVER PLANTING
-  PROPOSED CASCADING PLANTING
-  PAVED AREA - REFER ARCHITECTS DRGS FOR DETAILS
-  BUILDING LINE OVER
-  PROPERTY BOUNDARY
-  + RL 14.800 PROPOSED LEVEL

NOTES

1. REFER TO DRG 2303-010-SK030 FOR PLANT SPECIES SCHEDULE, IMAGES AND GENERAL NOTES
2. REFER ARCHITECTS DRGS FOR ALL FENCE DETAILS
3. REFER TO DRG 2303-010-SK011 FOR TYPICAL PODIUM PLANTER DETAILS



PRELIMINARY

B	REVISED ISSUE	JC	01.09.23
A	INITIAL ISSUE	JC	30.08.23
rev	description	drawn	date

WREN STREET HEALTH INVESTMENTS PTY LTD
 7-15 WREN STREET, BOWEN HILLS
LANDSCAPE CONCEPT PLAN
LEVEL 30 - SKY GARDEN PLANTING PLAN

LAUD ink
 landscape architecture and urban design

Office 7, 915 Ann Street, Fortitude Valley, QLD 4006
 E: elias@laudink.com.au / jane@laudink.com.au
 W: www.laudink.com.au
 ABN 80 169 838 144



Conditions of Use: This document may only be used by LAUD ink's client (and any other person who LAUD ink has agreed can use this document) for the purpose for which it was prepared and must not be used by any other person or for any other purpose.

scale | 1:200 for A1 job no. | 2303-010
 date | SEP 2023 rev no. | B

approved E. NICHOLAOU* **SK006**

PLAN
 SCALE 1:200

ANNOTATION NOTES

- 1 REFER TO DRAWINGS 2303-010-SK002 TO SK005 FOR LOWER LEVEL DETAILS
- 2 PODIUM PLANTERS TO BE PLANTED WITH A COMBINATION OF SUCCULENTS ALO hyb, CRA ova, CRA und, SAN tri, SEN cra AND SEN man
- 3 CASCADING SPECIES APT cor AND CAS CI TO BE POSITIONED AT EDGE OF PLANTER TO SOFTEN BUILDING FACADE
- 4 INDICATIVE OUTDOOR FURNITURE - REFER TO ARCHITECT DRAWINGS FOR OUTDOOR BAR DETAILS

CHARACTER REFERENCE IMAGES



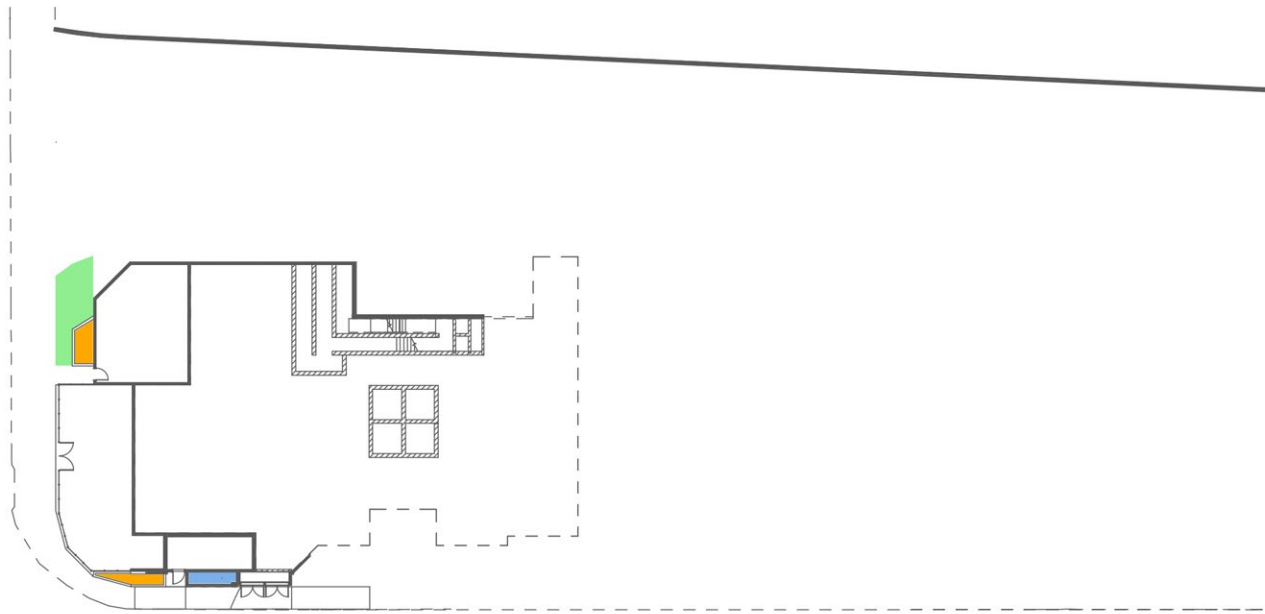
1. CASCADING SPECIES AT EDGE OF PLANTER TO SOFTEN BUILDING FACADE



2. PODIUM PLANTERS TO BE PLANTED WITH A COMBINATION OF LOW MAINTENANCE AND HARDY SUCCULENTS TO PROVIDE SOFTENING WHILE ENSURING CITY VIEWS ARE MAINTAINED

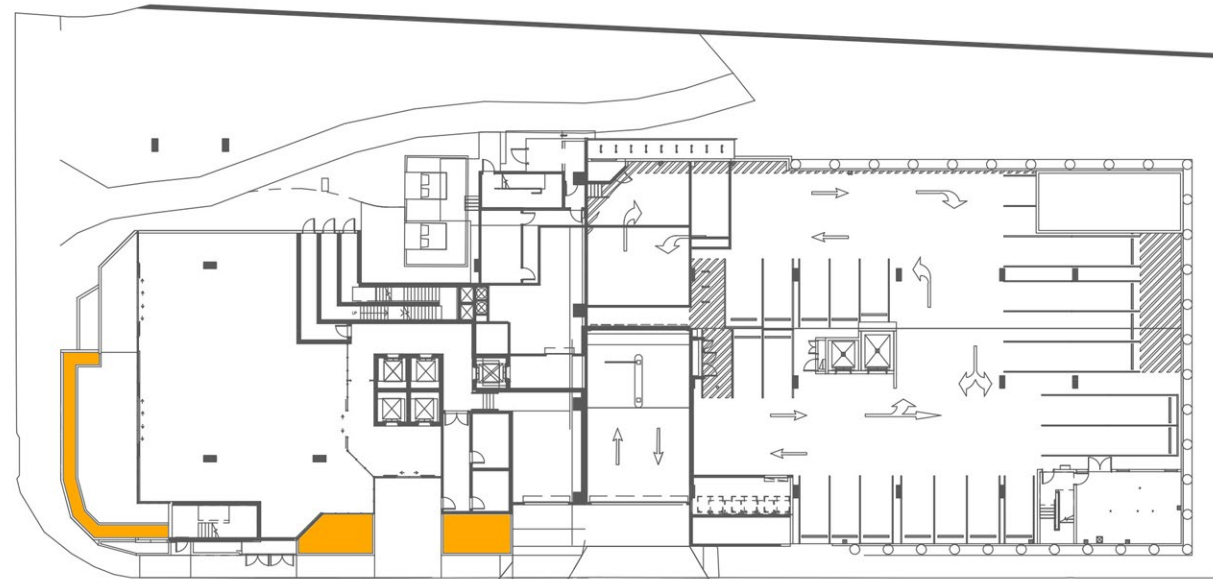


3. DESIGN INTENT FOR ROOFTOP BAR AND PODIUM PLANTERS



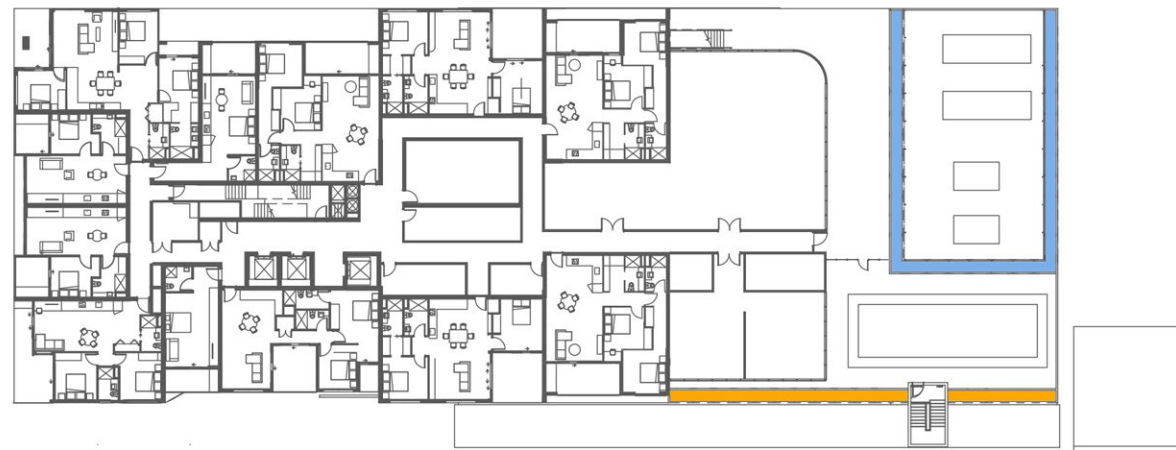
LOWER GROUND FLOOR

NTS



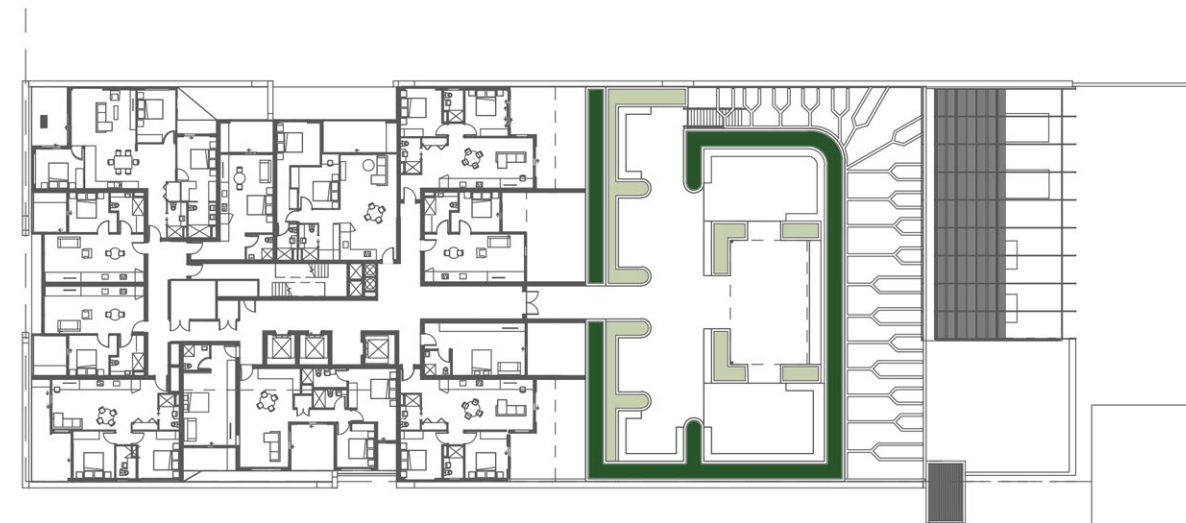
GROUND FLOOR LOBBY

NTS



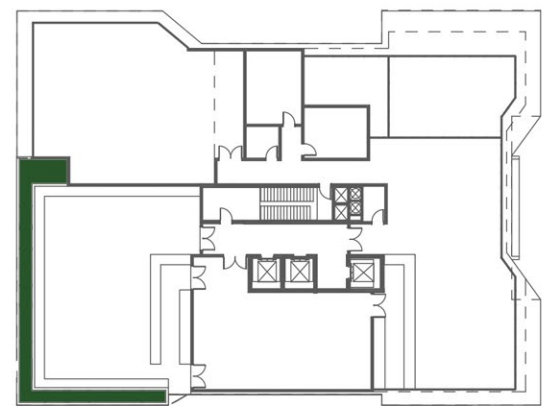
LEVEL 11 - UNITS & COMMUNAL AREAS

NTS



LEVEL 12 - UNITS & COMMUNAL AREAS

NTS



LEVEL 30 - SKY GARDEN

NTS

LEGEND

- 600mm DEEP PLANTER
- 900mm DEEP PLANTER
- 1000mm DEEP PLANTER
- 1200mm DEEP PLANTER
- PLANTING IN NATURAL GROUND

PRELIMINARY

rev	description	drawn	date
B	REVISED ISSUE	JC	01.09.23
A	INITIAL ISSUE	JC	30.08.23

WREN STREET HEALTH INVESTMENTS PTY LTD
 7-15 WREN STREET, BOWEN HILLS
LANDSCAPE CONCEPT PLAN
PODIUM PLANTER STRUCTURE DIAGRAMS

LAUD ink
 landscape architecture and urban design

Office 7, 915 Ann Street, Fortitude Valley, QLD 4006
 E: elias@laudink.com.au / jane@laudink.com.au
 W: www.laudink.com.au

ABN 80 169 838 144

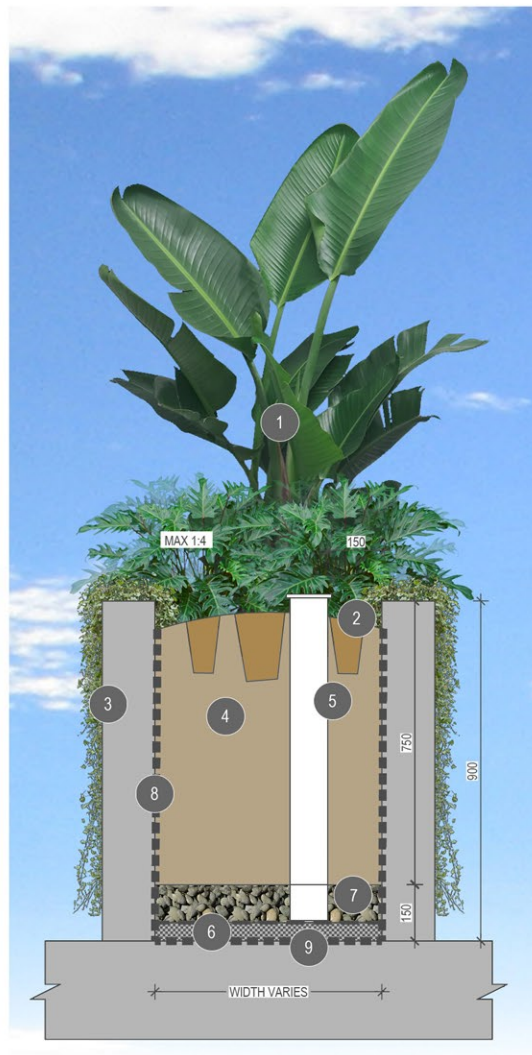
NOTES

- REFER TO DRGS 2303-010-SK002-SK006 FOR LANDSCAPE CONCEPT PLANS
- REFER TO DRGS 2303-010-SK011 FOR TYPICAL PODIUM PLANTER DETAILS
- REFER TO DRG 2303-010-SK030 FOR PLANT SPECIES SCHEDULE, IMAGES AND GENERAL NOTES

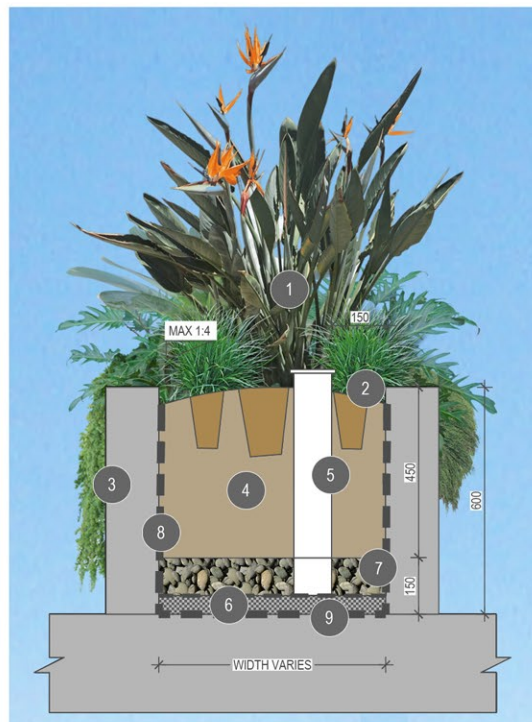
Conditions of Use: This document may only be used by LAUD ink's client (and any other person who LAUD ink has agreed can use this document) for the purpose for which it was prepared and must not be used by any other person or for any other purpose.

scale | NTS for A1 job no. | 2303-010
 date | SEP 2023 rev no. | B

approved | E. NICHOLAOU* **SK010**



TYPICAL SHRUBS IN PODIUM DETAIL
SCALE 1:10



TYPICAL SHRUBS IN PODIUM DETAIL
SCALE 1:10



TYPICAL TREE IN PODIUM DETAIL
SCALE 1:10



TYPICAL PALM IN PODIUM DETAIL
SCALE 1:10

TYPICAL PODIUM PLANTER ANNOTATION

- 1 TREES, FEATURE PLANTING AND GROUNDCOVERS AS SPECIFIED
- 2 100mm DEPTH ORGANIC MULCH LAYER, TO FINISH 25mm BELOW TOP OF ADJACENT WALL WITH PLANTING MEDIA TO BE MOUNDED (MAX GRADE 1:4)
- 3 REFER ARCHITECTS PROJECT FINISHES AND FITMENTS SCHEDULE FOR PLANTER WALL FINISHES DETAILS
- 4 PLANTING MEDIA SHALL BE MINERAL BASED WITH LOW ORGANIC MATTER AND SHALL COMPLY WITH TABLE 1, "AS4419-2003" SOILS FOR LANDSCAPING AND GARDEN USE". PLANTING MEDIA MIX 1 TO HAVE 5-10% ORGANIC MATTER
- 5 INSPECTION OPENING - 100 PVC PIPE WITH CAP
- 6 GEOTEXTILE MEMBRANE
- 7 MINIMUM 100mm WASHED COARSE RIVER SAND
- 8 WATER PROOFING MEMBRANE
- 9 30mm DRAINAGE CELL - CONNECTED TO DRAINAGE SYSTEM. REFER TO HYDRAULIC DRAWINGS FOR POINT OF CONNECTION
- 10 PLANTING MEDIA MIX TYPE 2 TO COMPLY WITH THE ABOVE STANDARDS AND TO HAVE AN ORGANIC MATTER LESS THAN 5%

PRELIMINARY

rev	description	drawn	date
B	REVISED ISSUE	JC	01.09.23
A	INITIAL ISSUE	JC	30.08.23

WREN STREET HEALTH INVESTMENTS PTY LTD
7-15 WREN STREET, BOWEN HILLS
LANDSCAPE CONCEPT PLAN
TYPICAL PODIUM PLANTER DETAILS

LAUD ink
landscape architecture and urban design

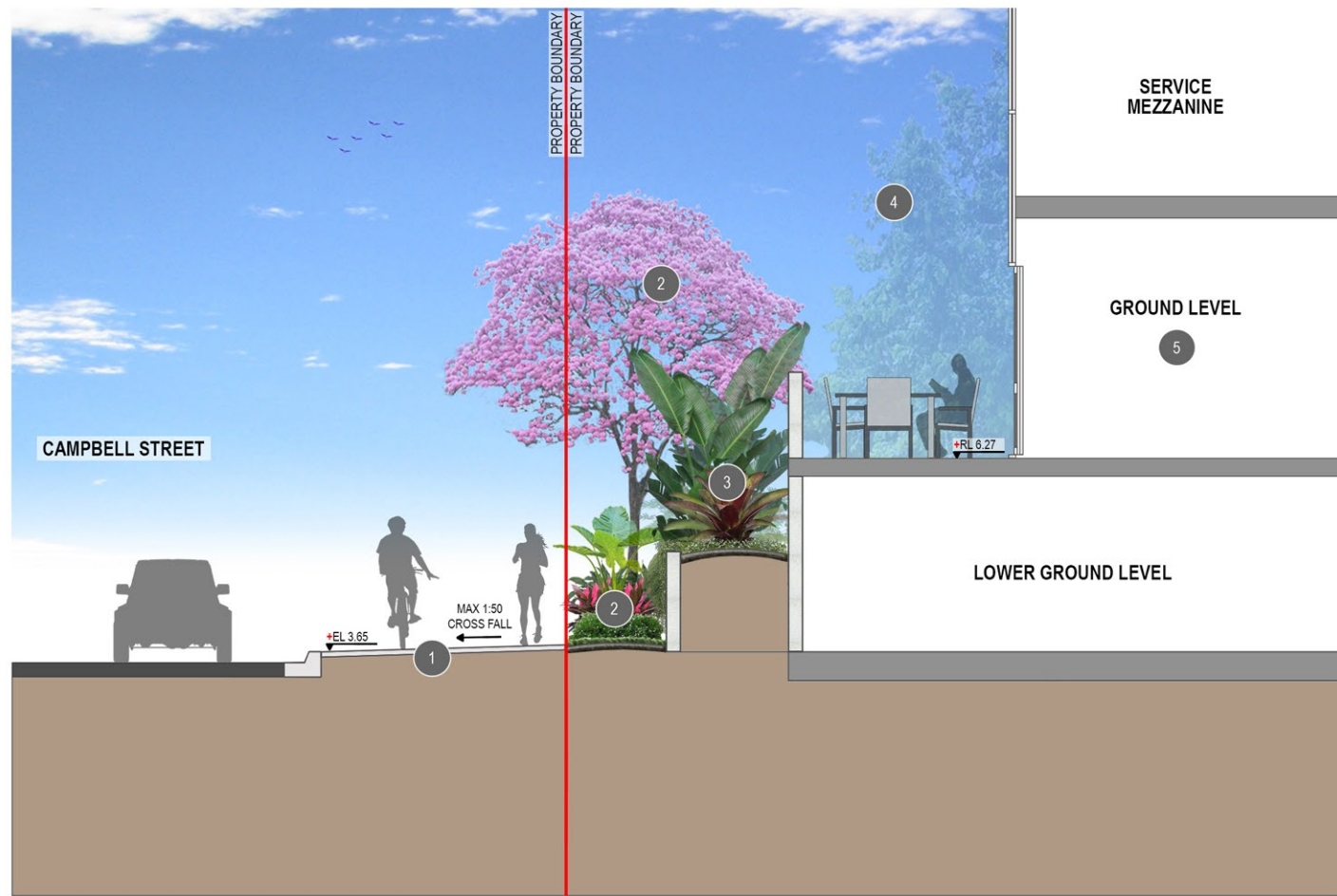
Office 7, 915 Ann Street, Fortitude Valley, QLD 4006
E: elias@laudink.com.au / jane@laudink.com.au
W: www.laudink.com.au
ABN 80 169 838 144



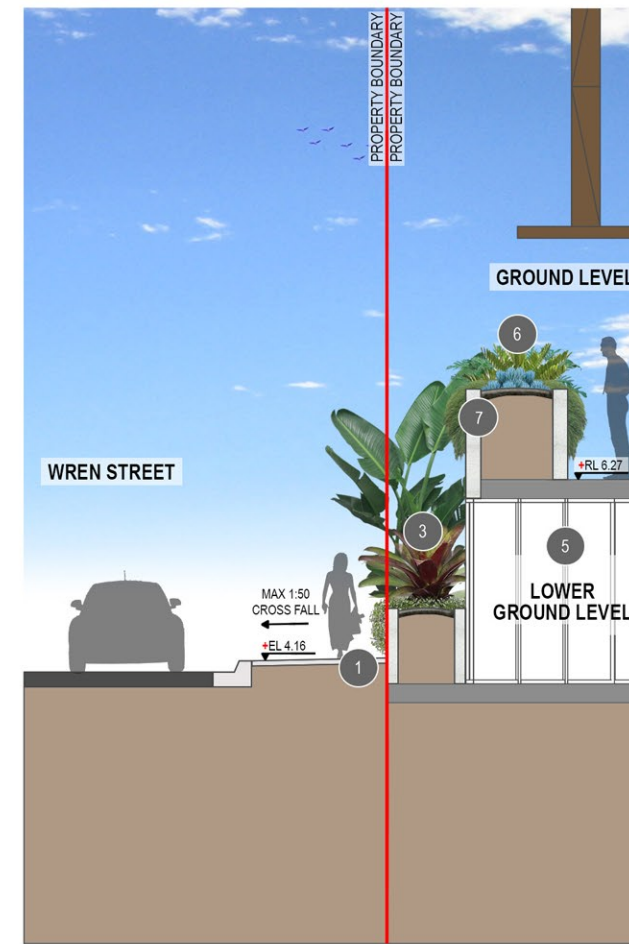
Conditions of Use: This document may only be used by LAUD ink's client (and any other person who LAUD ink has agreed can use this document) for the purpose for which it was prepared and must not be used by any other person or for any other purpose.

scale 1:10 for A1 job no. 2303-010
date SEP 2023 rev no. B

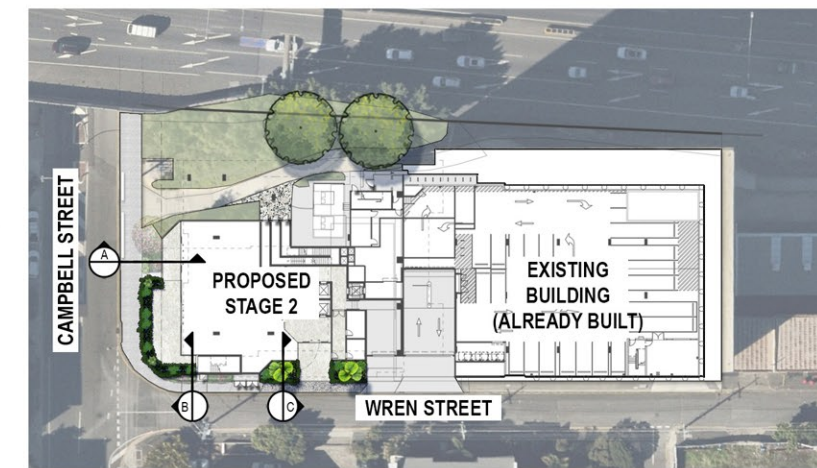
approved E. NICHOLAOU* SK011



SECTION A
SCALE 1:50



SECTION B
SCALE 1:50



KEY PLAN
NTS



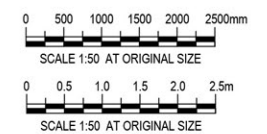
SECTION C
SCALE 1:50

ANNOTATION NOTES

- 1 PROPOSED FULL WIDTH PAVEMENT VICTORIA FALLS EXPOSED AGGREGATE (HANSON, BORAL OR APPROVED EQUIVALENT) AS PER BCC STREETScape HIERARCHY REQUIREMENTS - CENTRE STREET MINOR
- 2 FEATURE TREE TAB pal TO BUFFER EXISTING BIKE PATH AND SOFTEN CAMPBELL STREET FRONTAGE. TREE TO BE UNDERPLANTED WITH SHRUBS ALO cal, ALP mut, CAR mac, COR rub AND GROUNDCOVERS CAR gla, DIE gra, SEN man AND ZOY ten
- 3 PODIUM PLANTER TO INCLUDE SHRUBS ALC RUB, HEL HRN WITH CASCADING GROUNDCOVERS CAS CI AND DIC SF
- 4 EXISTING VEGETATION TO BE RETAINED AND REINSTATED WHERE IMPACTED BY BUILDING WORKS. REINSTATED VEGETATION TO CONSIST OF SHRUBS CAR mac AND PHI XAN WITH GROUNDCOVERS DIE gra, LIR JR AND LOM TC TO PROVIDE FULL COVERAGE OF GARDEN BEDS. GARDEN BEDS TO BE REMULCHED WHERE REQUIRED
- 5 REFER TO ARCHITECTS DRAWINGS FOR INTERNAL DETAILS
- 6 BALCONY PODIUM PLANTER TO INCLUDE SHRUBS PHI XAN AND ZAM fur WITH GROUNDCOVERS LIR JR AND SEN man
- 7 CASCADING SPECIES APT cor AND CAS CI TO BE POSITIONED AT EDGE OF BALCONY PLANTERS TO SOFTEN STREETScape INTERFACE AND BUILT FORM
- 8 FEATURE PALMS LIC gra TO DEFINE MAIN ENTRANCE AND SOFTEN HARDSTAND. PALMS TO BE UNDERPLANTED WITH SHRUBS ALO cal, ASP ela, PHI XAN, PIT MM AND ZAM fur, AND GROUNDCOVERS APT cor, CAR gla, CRA und, LIR JR AND OPH NAN

NOTES

- 1. REFER TO DRAWING 2303-010-SK030 FOR PLANT SPECIES SCHEDULE, IMAGES GENERAL NOTES
- 2. REFER TO DRAWING 2303-010-SK010 FOR PODIUM PLANTER STRUCTURE DIAGRAMS
- 3. REFER TO DRAWING 2303-010-SK011 FOR TYPICAL PODIUM PLANTER DETAILS



PRELIMINARY

B	REVISED ISSUE	JC	01.09.23
A	INITIAL ISSUE	JC	30.08.23
rev	description	drawn	date

WREN STREET HEALTH INVESTMENTS PTY LTD
7-15 WREN STREET, BOWEN HILLS
LANDSCAPE CONCEPT PLAN SECTIONS



Office 7, 915 Ann Street, Fortitude Valley, QLD 4006
E: elias@laudink.com.au / jane@laudink.com.au
W: www.laudink.com.au
ABN 80 169 838 144

Conditions of Use: This document may only be used by LAUD ink's client (and any other person who LAUD ink has agreed can use this document) for the purpose for which it was prepared and must not be used by any other person or for any other purpose.

scale | 1:50 for A1 job no. | 2303-010
date | SEP 2023 rev no. | B

approved E. NICHOLAOU* SK020

PROPOSED PLANT SPECIES IMAGES

TREES



CUPANIOPSIS anacardioides ELAEOCARPUS eumundii LICUALA grandis RANDIA fitzalanii TABEBUIA palmeri

SHRUBS



ALCANTAREA imperialis rubra ALOCASIA calidora ALPINIA mutica ASPIDISTRA elatior CARISSA macrocarpa CORDYLINE fruticosa 'Rubra'



CRASSULA ovata HELICONIA bihai x caribaea 'Hot Rio Nights' MONSTERA deliciosa PHILODENDRON 'Xanadu' PITTOSPORUM 'Miss Muffett' RHAPIS excelsa



STRELITZIA reginae SYZYGIVM australe 'Straight and Narrow' ZAMIA furfuracea

GROUNDCOVERS



ALOE hybrid 'Mighty Gold' APTENIA cordifolia CARPOBROTUS glaucescens CASUARINA glauca CISSUS antarctica CRASSULA arborescens undulatifolia



DIETES grandiflora LIRIOPE muscari 'Just Right' LOMANDRA 'Tropic Cascade' OPHIOPOGON japonicus 'Nanus' PEPEROMIA obtusifolia SANSEVIERIA trifasciata



SENECIO crassissimus SENECIO mandraliscae ZOYSIA tenuifolia

PROPOSED PLANT SPECIES SCHEDULE

CODE	PLANT SPECIES	COMMON NAME	CENTRES (mm)	POT SIZE	APPROX. HEIGHT (AT MATURITY) (H x W)
TREES					
CUP ana	CUPANIOPSIS anacardioides	Tuckeroo	AS SHOWN	25L	10m x 4m
ELA eum	ELAEOCARPUS eumundii	Eumundii Quandong	AS SHOWN	25L	8-10m x 3-5m
LIC gra	LICUALA grandis	Ruffled Fan Palm	AS SHOWN	25L	
RAN fit	RANDIA fitzalanii	Native Gardenia	AS SHOWN	25L	6-10m x 2-4m
TAB pal	TABEBUIA palmeri	Pink Trumpet Tree	AS SHOWN	25L	10m x 6m
SHRUBS					
ALC RUB	ALCANTAREA imperialis 'Rubra'	Imperial Bromeliad	750mm	200mm	
ALO cal	ALOCASIA calidora	Dwarf Elephant Ears	1000mm	200mm	
ALP mut	ALPINIA mutica	False Cardamom Ginger	700mm	200mm	
ASP ela	ASPIDISTRA elatior	Cast-Iron Plant	700mm	200mm	
CAR mac	CARISSA macrocarpa	Desert Star	500mm	300mm	
COR RUB	CORDYLINE fruticosa 'Rubra'	Cordyline Rubra	700mm	200mm	
CRA ova	CRASSULA ovata	Jade Plant	500mm	300mm	
HEL HRN	HELICONIA bihai x caribaea 'Hot Rio Nights'	Heliconia Hot Rio Nights	1000mm	200mm	
MON del	MONSTERA deliciosa	Swiss Cheese Plant	700mm	200mm	
PHI XAN	PHILODENDRON 'Xanadu'	Xanadu	500mm	300mm	
PIT MM	PITTOSPORUM tobria 'Miss Muffet'	Miss Muffet	500mm	300mm	
RHA exc	RHAPIS excelsa	Lady Palm	750mm	200mm	
STR reg	STRELITZIA reginae	Bird of Paradise	750mm	200mm	
SYZ SN	SYZYGIVM australe 'Straight & Narrow' - 'SAN01'	Straight and Narrow	1000mm	300mm	
ZAM fur	ZAMIA furfuracea	Cardboard Palm	750mm	200mm	
GROUNDCOVER					
ALO MG	ALOE hybrid 'Mighty Gold'	Mighty Gold	500mm	300mm	
APT cor	APTENIA cordifolia	Baby Sunrose	350mm	200mm	
CAR gla	CARPOBROTUS glaucescens	Pigface	500mm	140mm	
CAS CI	CASUARINA glauca 'Cousin It'	Cousin It	350mm	140mm	
CIS ant	CISSUS antarctica	Kangaroo Vine	500mm	140mm	
CRA und	CRASSULA arborescens undulatifolia	Ripple Jade	500mm	140mm	
DIC SF	DICHONDRA 'Silver Falls'	Silver Falls	350mm	140mm	
DIE gra	DIETES grandiflora	Large Wild Iris	500mm	140mm	
LIR JR	LIRIOPE muscari 'Just Right' - 'LIRJ'	Just Right	500mm	140mm	
LOM TC	LOMANDRA hystrix 'Tropic Cascade' - 'LMWP'	Tropic Cascad Mat Rush	500mm	140mm	
OPH NAN	OPHIOPOGON japonicus 'Nanus'	Mondo Grass Dwarf	250mm	140mm	
PEP obt	PEPEROMIA obtusifolia	Baby Rubber Plant	350mm	140mm	
SAN tri	SANSEVIERIA trifasciata	Mother-in-law's tongue	500mm	140mm	
SEN cra	SENECIO crassicaulis	Vertical Leaf	500mm	300mm	
SEN man	SENECIO mandraliscae	Blue Chalk Sticks	500mm	140mm	
ZOY ten	ZOYSIA tenuifolia	Korean Velvet Grass	250mm	140mm	

NOTES

- REFER TO LANDSCAPE CONCEPT PLANS 2303-010-SK002 TO SK006 FOR PROPOSED PLANTING DESIGN
- REFER TO CIVIL ENGINEERS DRAWINGS FOR DRIVEWAY AND CROSSOVER DETAILS
- REFER TO ARCHITECTS DRAWINGS FOR ALL FENCE DETAILS
- LANDSCAPE DETAILED DESIGN IS TO BE COORDINATED WITH HYDRAULIC AND ENGINEERING DESIGN TO CONFIRM LOCATIONS OF UNDERGROUND SERVICES PRIOR TO CONSTRUCTION
- LANDSCAPE GENERAL STANDARDS.
 - CULTIVATION MINIMUM DEPTH 150mm FOR TURFED AREAS AND PLANTING AREAS
 - IMPORTED TOPSOIL TO AS 4419. MINIMUM DEPTHS, GRASSED AREAS (TURF) 100mm, PLANTING AREAS 300mm.
 - MULCH TO AS 4454 PROVIDE MULCH WHICH IS FREE OF DELETERIOUS AND EXTRANEIOUS MATTER SUCH AS SOIL, WEEDS AND STICKS.
 - STAKE SIZES FOR PLANTS 1-2.5m HEIGHT TWO 50 x 50 x 1800mm STAKES PER PLANT PROVIDE TIES FIXED SECURELY TO THE STAKES, ONE TIE AT HALF THE HEIGHT OF THE MAIN STEM, OTHERS AS NECESSARY TO STABILISE PLANT. FOR PLANTS <2.5m HIGH 50mm HESSIAN WEBBING STAPLED TO THE STAKES.
- FOR ALL STREETScape WORKS REFER TO THE FOLLOWING BRISBANE CITY COUNCIL STANDARD DRAWINGS FOR LANDSCAPE CONSTRUCTION DETAILS:
 - SOFTWARES:
 - 1.1 BSD-9051 PLANTING GENERAL NOTES SHEET 1
 - 1.2 BSD-9051 PLANTING GENERAL NOTES SHEET 2
 - 1.3 BSD-9052 PLANTING MEDIA PROFILES (TURF AND GARDEN)
 - 1.4 BSD-9053 PLANTING - TYPICAL TREE, SHRUB & TUBE STOCK
 - 1.5 BSD-9082 ROOT DEFLECTOR INSTALLATION ADJACENT TO EXISTING ROAD AND STRUCTURES
- ALL BCC STANDARD DRAWINGS ARE TO BE READ IN CONJUNCTION WITH THE FOLLOWING BRISBANE CITY COUNCIL TECHNICAL REFERENCE SPECIFICATIONS:
 - S190 LANDSCAPING

PRELIMINARY

rev	description	drawn	date
B	REVISED ISSUE	JC	01.09.23
A	INITIAL ISSUE	JC	30.08.23

WREN STREET HEALTH INVESTMENTS PTY LTD
7-15 WREN STREET, BOWEN HILLS
LANDSCAPE CONCEPT PLAN
PLANTING SPECIES SCHEDULES, IMAGES & NOTES



Office 7, 915 Ann Street, Fortitude Valley, QLD 4006
E: clients@laudink.com.au / jane@laudink.com.au
W: www.laudink.com.au
ABN 80 169 838 144

Conditions of Use: This document may only be used by LAUD ink's client (and any other person who LAUD ink has agreed can use this document) for the purpose for which it was prepared and must not be used by any other person or for any other purpose.

scale NTS for A1 job no. 2303-010
date SEP 2023 rev no. B

approved E. NICHOLAOU* SK030