

Archipelago

5 Hercules Street, Hamilton

Landscape statement of design intent

The Cullen

HERCULES STREET · HAMILTON

—CONTACT

Dominic Powell

Principal Landscape Architecture,
Archipelago Architects Pty Ltd
Mezzanine Floor / 33 Queen St,
Brisbane City
QLD 4000
T— +61 411 527 343
E— dp@archipelago.com.au

—DOCUMENT ISSUE RECORD

Client:	Limitless	
Report:	5 Hercules Street Hamilton	
	Statement of Landscape intent	
File:	J:\Projects\22010_HSH_Hercules Street Hamilton	
Date:	Issue:	Checked:
06/07/22	Issued for DA_A	DP
19/12/23	Issued for DA_B	DP

© ARCHIPELAGO. All Rights Reserved

This work is copyright and cannot be reproduced or copied by any means without written permission of Archipelago Architects Pty Ltd. Any license, express or implied, to use this document for any purpose whatsoever is restricted to the terms of the agreement between Archipelago Architects Pty Ltd and the instructing party.

Design Approach	5
Landscape Design - Ground Level	6
Landscape Design - Level 1	9
Landscape Design - Level 2	10
Landscape Design - Level 3	11
Landscape Design - Level 4	13
Landscape Design - Level 4 Pool	15
Landscape Design - Level 22	17
Landscape Design - Rooftop	19
Landscape Design - Level 5 - 11	21
Landscape Design - Level 12	21
Landscape Design - Level 13-21	22
Landscape Design - Typical planter detail	23
Landscape Design - Proposed media depths	24
Appendix A - Irrigation Strategy report	27

Landscape Design - Master Plan



NTS 

Design Approach

The landscape design for “The Cullen” will deliver a lush subtropical haven for residents and their guests whilst concurrently contributing significantly to the local streetscape through character amenity and visual engagement.

For the Hercules Street frontage a richly textured public realm composition that embraces the sites heritage through the integration of historic wharf timber in a bespoke arbor structure engaging with the local neighbourhood to draw people in and energise their walking and cycling journeys.

Complementing the architectural facade along the lower levels a contemporary yet timeless palette of brown porphyry, olive trees and lush leafy subtropical and sculptural under-story planting in conjunction with the re-purposed historic timber features will realise a unique and visually activated frontage.

Cascading down from both the precast concrete facades at the upper level a diverse mix of attractive trailing plants within a sequence of planters will add an organic texture whilst simultaneously visually elevating the green of the ground-plane to contribute to the wider neighbourhood character.

Landscape Design - Ground Level



Legend

- | | | | |
|---|--|---------------------|----------------------------------|
| 1. Pavement type 1 - Feature paving | 5. Subtropical mass planting | 8. Security gate | 12. Heritage wharf timber arbor |
| 2. Pavement type 2 - Natural broom finish | 6. Entry statement with feature planting, sculptural garden and integrated art | 9. Shade planting | 13. Heritage wharf timber totems |
| 3. Raised Planter | 7. Sculptural furniture | 10. Bicycle parking | |
| 4. Planting on natural ground | | 11. Visitor parking | |



Ground Level

The public realm at ground level has been curated to celebrate both the sites unique location and its visual and physical role as an entry moment marker into the Portside precinct by creating a vibrant and engaging entry experience.

Hardscape treatments, and landscape embellishments have been designed to integrate with the built form, reference the sites history through material choices, reinforce the existing local landscape character, and contribute to the public streetscape.

In partnership with the buildings articulated and contemporary yet timeless architectural presence, the public realm deliberately blends the public realm in a seamless subtropical manner with an eclectic planting palette featuring richly textured sculptural ground-covers in partnership with the refined elegance of semi-mature olives tree resting resplendently within an elegant natural porphyry stone pavement.

A bespoke heritage wharf timber arbor featuring climbing species and cultural heritage signage will be a distinctive feature of the ground level frontage creating the possibility for a true local place to evolve through community engagement with the activated building ground floor.

Landscape palette

1. Exemplar entry statement landscape
2. Mixed agave species and creeping ground covers to create textural interest
3. Planted arbor adopting heritage wharf timbers
4. Feature pavement - Crazy Pave
5. Ficus pumila - Creeping fig
6. Subtropical shade planting mixed species
7. Heritage wharf timber totems
8. Feature seating - Pico Pebble seat



Ground Level - Sections

The ground level landscape is designed to celebrate the sites unique location as the secondary entry moment into the Portside precinct by creating a vibrant and engaging entry statement.

Hardscape treatments, and landscape embellishments have been designed to integrate with the built form and existing landscape character, contribute to the local streetscape and enhance the sub-tropical qualities of the site.



Entry statement feature planting, sculptural garden and integrated art

Bespoke heritage wharf timber arbor



Section A - Main Street streetscape - Entry

Landscape Design - Level 1



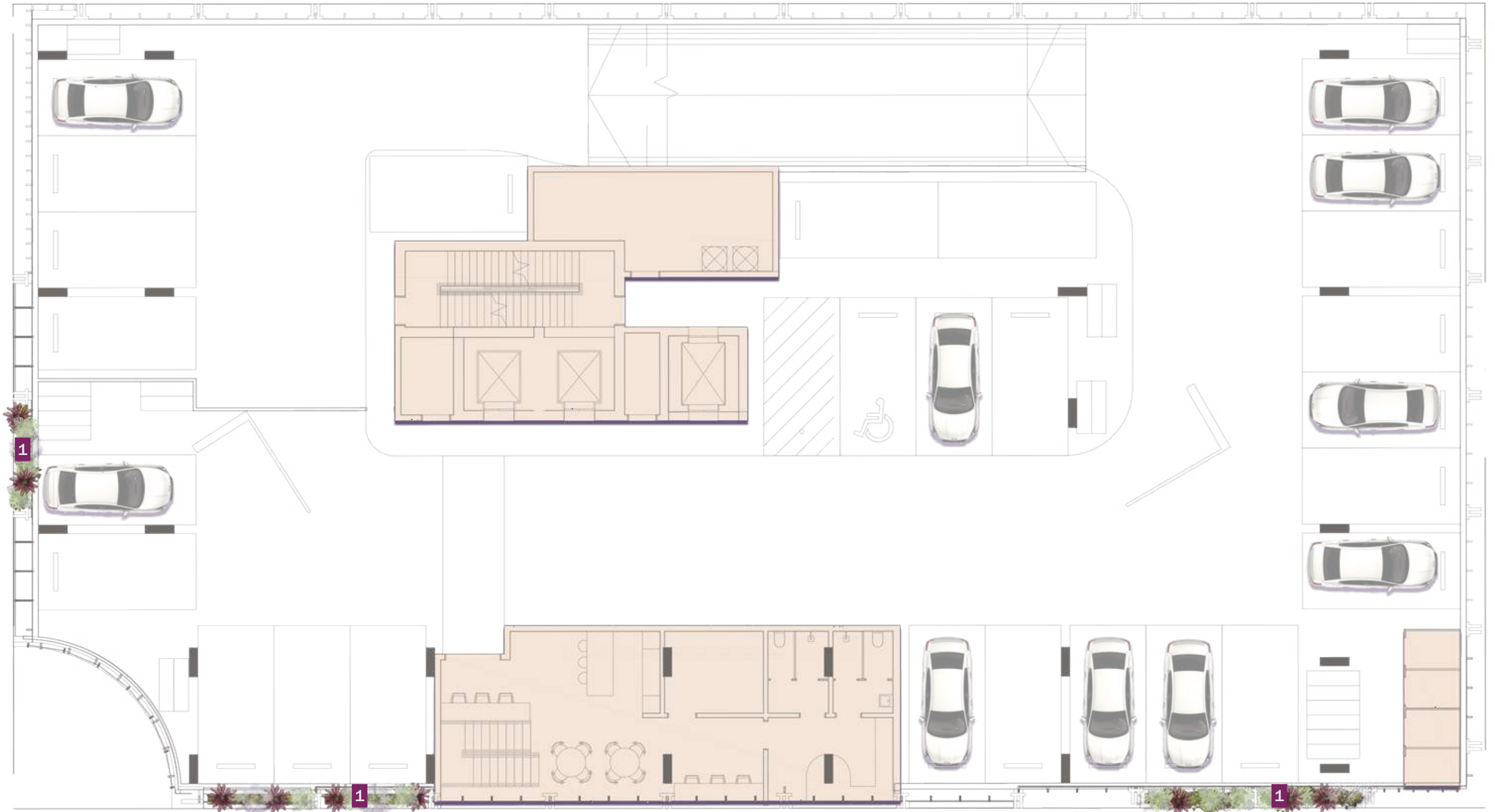
Legend

- 1. Subtropical feature podium planting

NTS 

A

Landscape Design - Level 2



Legend

- 1. Subtropical feature podium planting

Landscape Design - Level 3 Outdoor Terrace



Legend

- 1. Subtropical feature podium planting
- 2. Casual dining area for small groups

NTS 

A

Level 3 Outdoor Terrace

The recreation deck has been inspired by it's industrial location and brings together a combination of boutique industrial design and luxury to create a recreational space that users will want to be in.

A shaded oasis, the Level 4 amenities include a resort-style pool, cooking facilities, casual eating areas and a gym and fitness space for yoga and Pilates for residents to enjoy at their leisure.

Planting palette

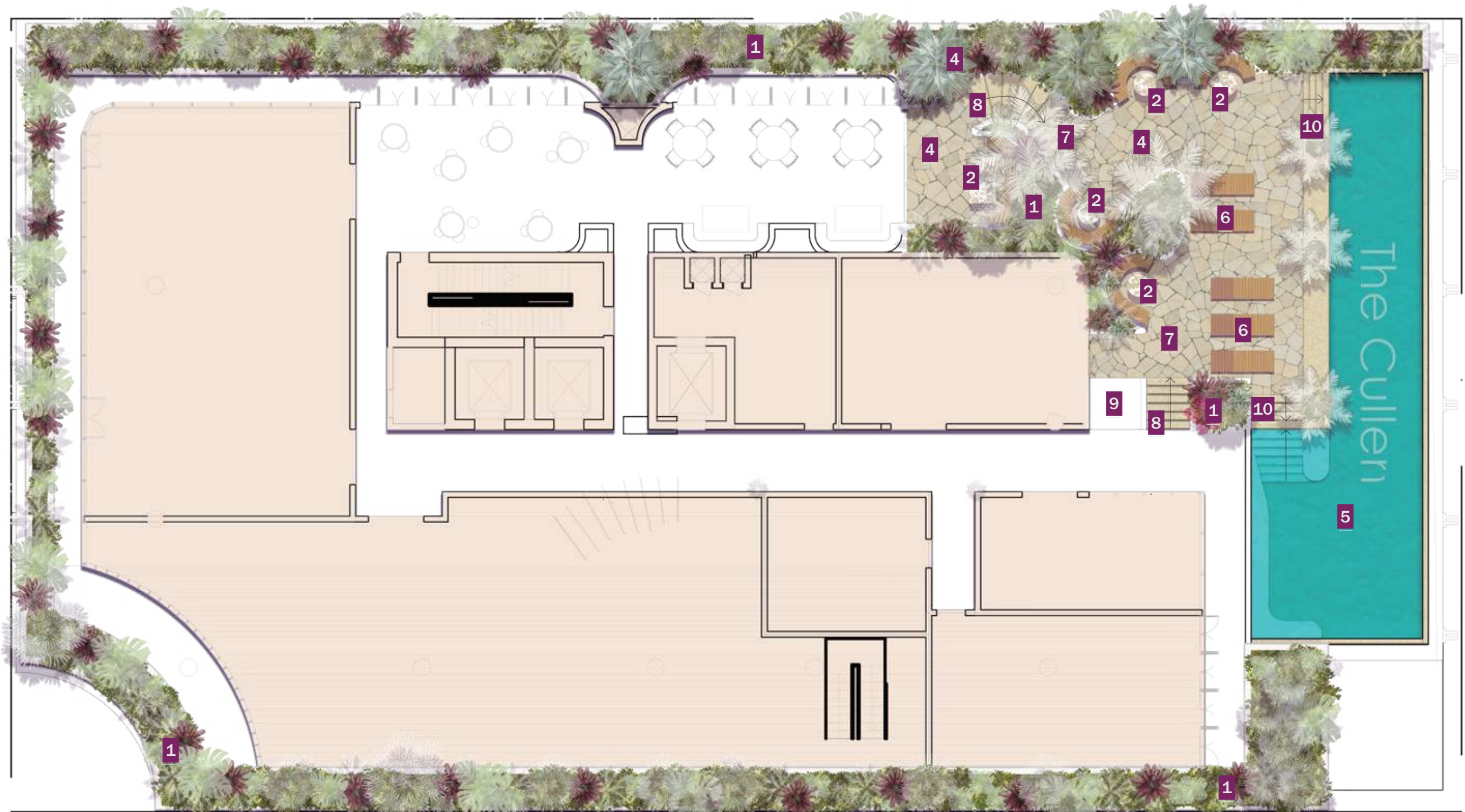
Exposed to the elements with a constrained soil profile, the species chosen are tested in these conditions to complement the luxurious setting. A sample of proposed plant species is listed below.

Planting (Indicative)

1.	<i>Alocasia macrorrhizos</i>	Giant Taro
2.	<i>Alcantarea Imerialis 'Rubra'</i>	Imperial Bromeliad
3.	<i>Zamia furfuracea</i>	Cardboard Palm
4.	<i>Mesembryanthemum cordifolia</i>	Baby sun rose
5.	<i>Casuarina glauca</i>	Casuarina Cousin It
6.	<i>Dichondra argentea</i>	Silver Falls
7.	<i>Philodendron congo</i>	Rojo
8.	<i>Rhapis excelsa</i>	Lady Palm



Landscape Design - Level 4 Recreation



Legend

- | | | |
|--|--------------------------|---|
| 1. Subtropical feature podium planting | 5. Pool | 8. Stairs up from (19.1 - 20.150m FSL) |
| 2. Casual seating areas for small groups | 6. Poolside Lounge | 9. Wheelchair lift |
| 4. Feature pavement | 7. Pool fencing and gate | 10. Steps up to pool (20.15 - 20.60m FSL) |

NTS 

A

Level 4 Recreation

The recreation deck has been inspired by it's industrial location and brings together a combination of boutique industrial design and luxury to create a recreational space that users will want to be in.

The Level 4 amenities include a resort-style pool, casual eating areas and a gym and fitness space for residents to enjoy at their leisure.

Planting palette

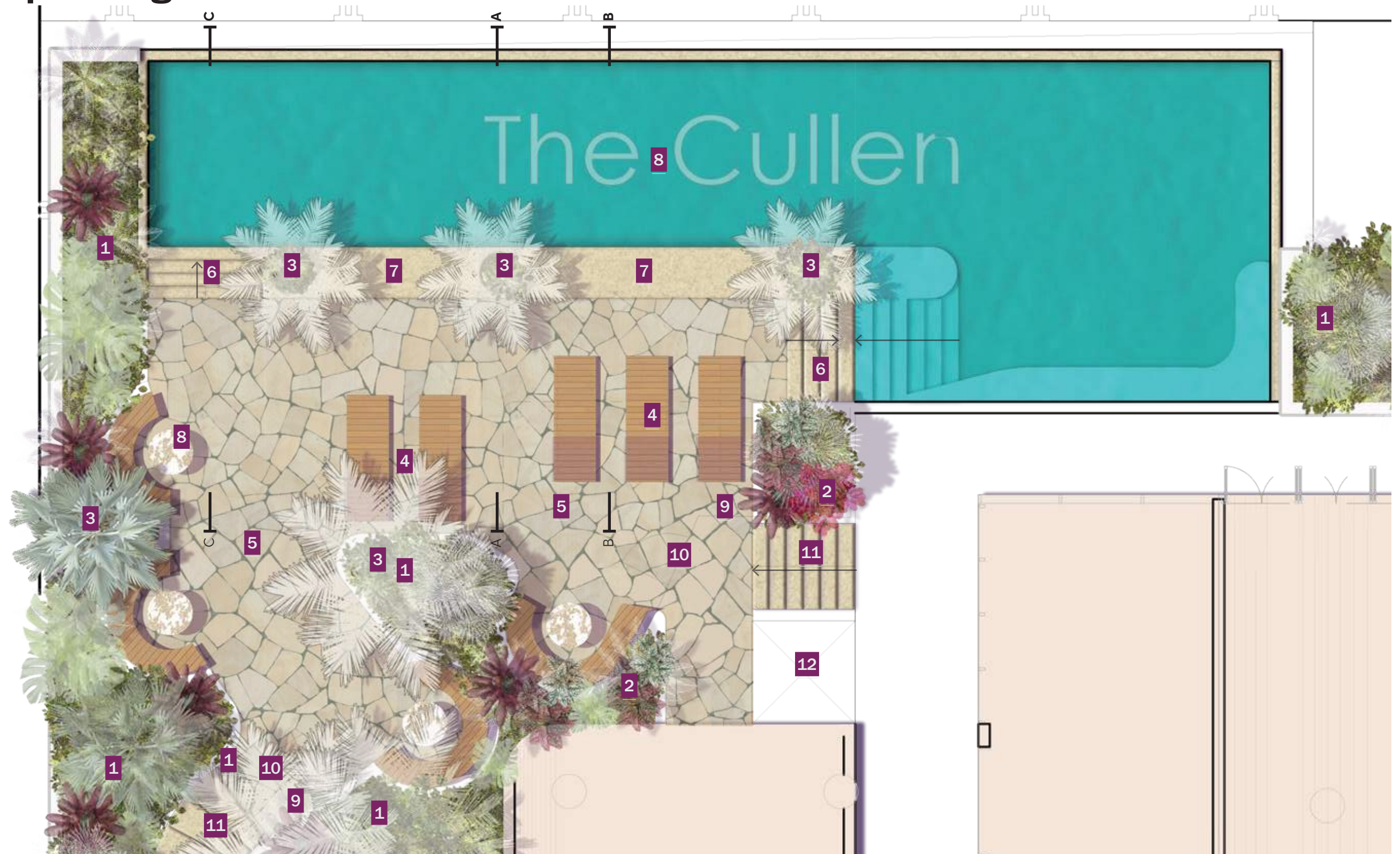
Exposed to the elements with a constrained soil profile, the species chosen are tested in these conditions to complement the luxurious setting. A sample of proposed plant species is listed below.

Planting (Indicative)

- | | | |
|----|--|--------------------|
| 1. | <i>Alocasia macrorrhizos</i> | Giant Taro |
| 2. | <i>Alcantarea Imerialis 'Rubra'</i> | Imperial Bromeliad |
| 3. | <i>Zamia furfuracea</i> | Cardboard Palm |
| 4. | <i>Anthurium Great Red</i> | Flamingo Lilly |
| 5. | <i>Rosmarinus officinalis 'Prostratus'</i> | Prostrate Rosemary |
| 6. | <i>Trachelospermum</i> | Star jasmine |
| 7. | Bismarck Palm | Bismarck Palm |
| 8. | <i>Rhapis excelsa</i> | Lady Palm |



Landscape Design - Level 4 Pool



Legend

1.	Podium planting	5.	Feature paving	9.	Pool fence
2.	Podium shade planting	6.	Pool entry stairs up (20.15 - 20.60m FSL)	10.	Pool Gate
3.	Palm planting	7.	0.9m Pool seating ledge	11.	Stairs up from (19.1 - 20.150m FSL)
4.	Day bed	8.	Pool	12.	Wheelchair lift

Level 4 Pool

Planting surrounding the pool will be in planters flush with the pool coping with edge protection through a glass balustrade to give a sense of expansiveness. Planting will cascade from the pool edge over the facade to soften the built form edge whilst providing a green skirt to the recreation terraces viewlines out.

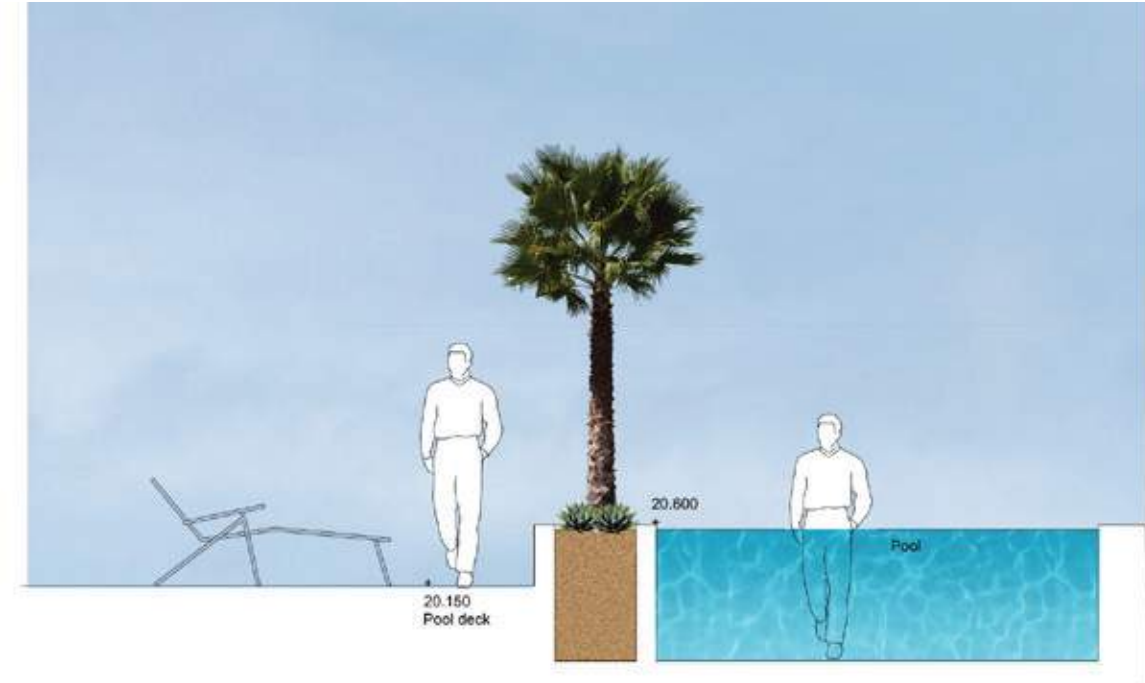
The pool has been articulated to provide for 20m lap and casual swimming

Planting palette

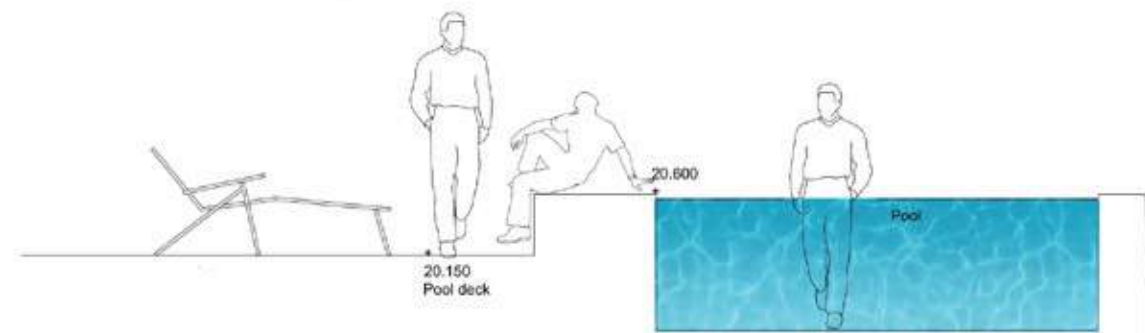
Pool friendly plants will be chosen for their low maintenance, drought tolerance, non invasive roots and ability to cope with the challenges of pool adjacency.

Planting (Indicative)

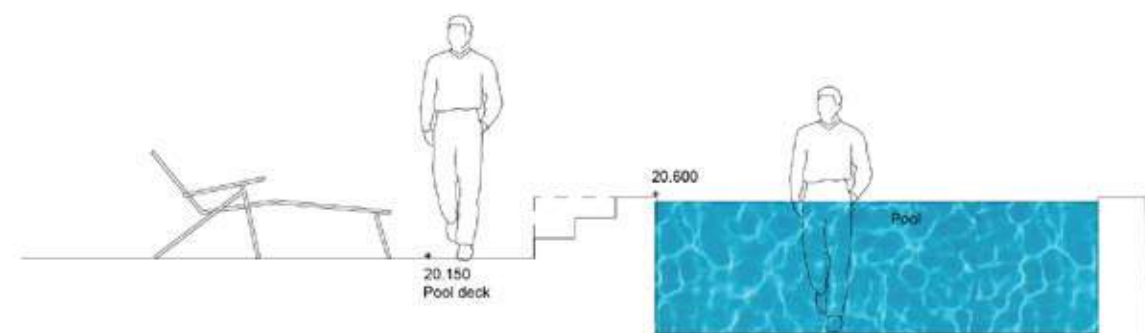
1.	<i>Livistona australis</i>	Cabbage Palm
.	<i>Phoenix canariensis</i>	Canary Island date pal
.	<i>Philodendron 'xanadu'</i>	Xanadu
.	<i>Senecio serpens</i>	Blue chalk sticks
.	<i>Dichondra argentea</i>	Silver Falls
2.	Mixed shade species (<i>Epipremnum aureum</i> , <i>Peperomia obtusifolia</i> , <i>Syngonium podophyllum</i>)	



Section AA



Section BB



Section CC

Landscape Design - Level 22



Legend

- 1. Penthouse open plan outdoor terrace
- 2. Integrated seating
- 3. Outdoor kitchen
- 4. Podium planting mixed species

Level 22

The Penthouse Terraces provide the opportunity to experience local and long views from behind a parapet of subtropical planting. The edge planters will provide a safe sold “green” edge with low ground-covers and cascading planting softening the roof profile whilst also providing a sense of prospect and refuge - allowing the viewer to see but not feel exposed.

Planting palette

The planting palette for the roof text will feature a diversity of native and exotic species suited to the challenging conditions present on higher building levels.

Planting (Indicative)

- | | |
|-----------------------------------|---------------------|
| 1. <i>Russelia equisetiformis</i> | Fire cracker fern |
| 2. <i>Casuarina glauca</i> | Casuarina Cousin It |
| 3. <i>Carpobrotus glaucencens</i> | Pig face |
| 4. <i>Brachyscome multifida</i> | Native Daisy |
| 5. <i>Dichondra argentea</i> | Silver Falls |
| 6. <i>Epipremnum aureum</i> | Devils ivy |
| 7. <i>Senecio serpens</i> | Blue Chalk Sticks |
| 8. <i>Westringia fruticosa</i> | Native Rosemary |



Planting character image



Landscape Design - Level 23 Rooftop



Legend

- 1. Pavement
- 2. Decorative Gravel
- 3. Solar panel
- 4. Fytogreen extensive green roof system
- 5. Urban Bee hives

Level 23 Rooftop

The Roof top offers the opportunity for the integration of solar panels with a extensive green roof system (Fytogreen), creating a biosolar rooftop.

Planting palette

The planting palette for the roof will be designed with Fytogreen.

Planting (Indicative)

- 1. Sedum Sp.



Biosolar rooftop exemplar



Exemplar Urban Beekeeping



Exemplar rooftop planting



Exemplar rooftop planting

Landscape Design - Upper Levels

Levels 5-11

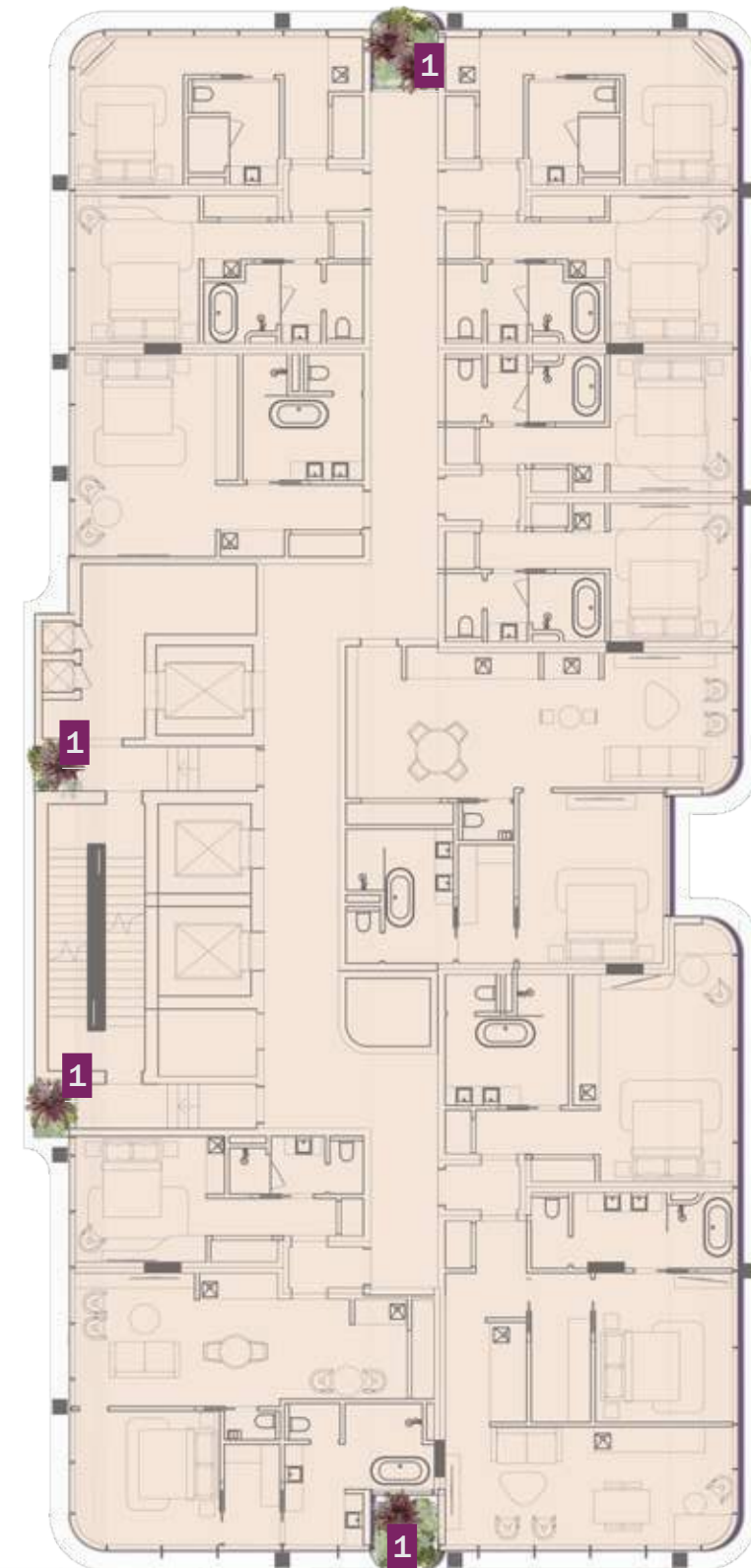


Legend

- 1. Podium edge planting
- 2. Extensive green roof system (Fytogreen). to Level 4 Rooftop with intergrated signage



Levels 12



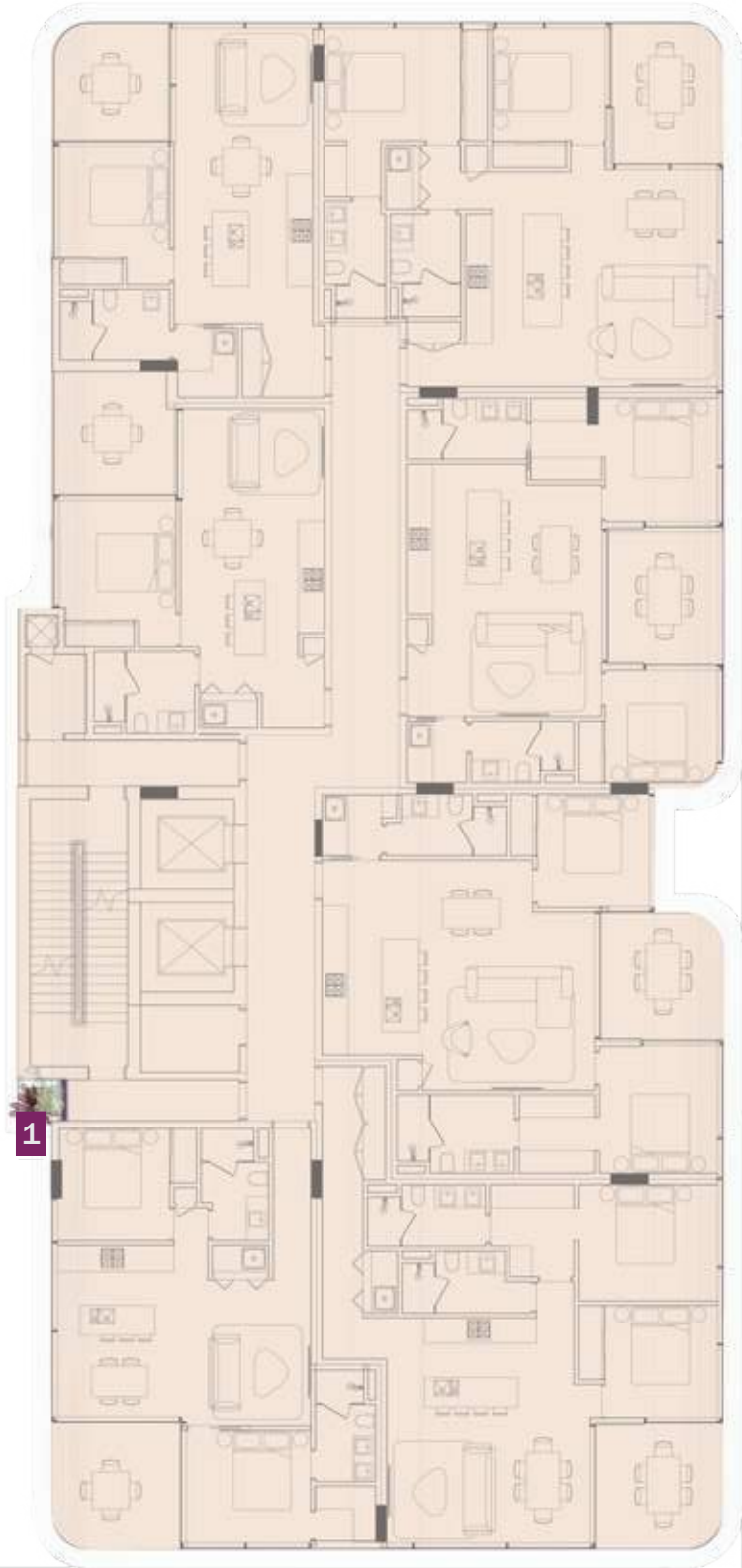
Legend

- 1. Podium edge planting



Landscape Design - Upper Levels

Levels 13-21



Legend

- 1. Podium edge planting



Planting palette

Cascading plants

1. *Convolvulus sabatius*
2. *Rosmarinus Prostrate Rosemary*
3. *Epopremnum 'devils ivy'*
4. *Dichondra 'Silver Falls'*

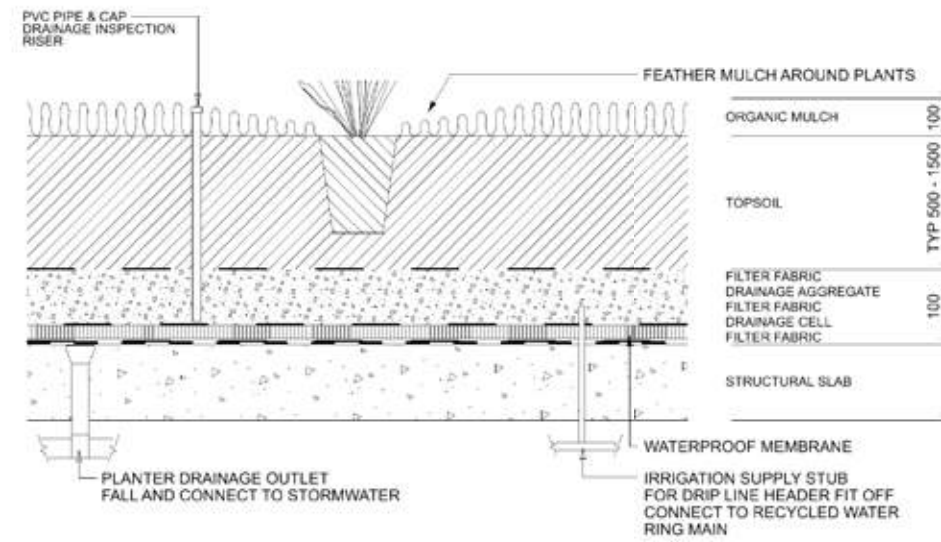


Climbers

5. *Stephanotis floribunda*
6. *Ficus pumila*
7. *Monstera deliciosa*
8. *Chonemorpha fragrans*



Typical planter detail



Legend

1. Podium edge planting
2. Feature podium planting

Landscape Design - Media depths



Ground Floor

NTS

Legend

- Podium planting 600mm depth
- Planting on natural ground

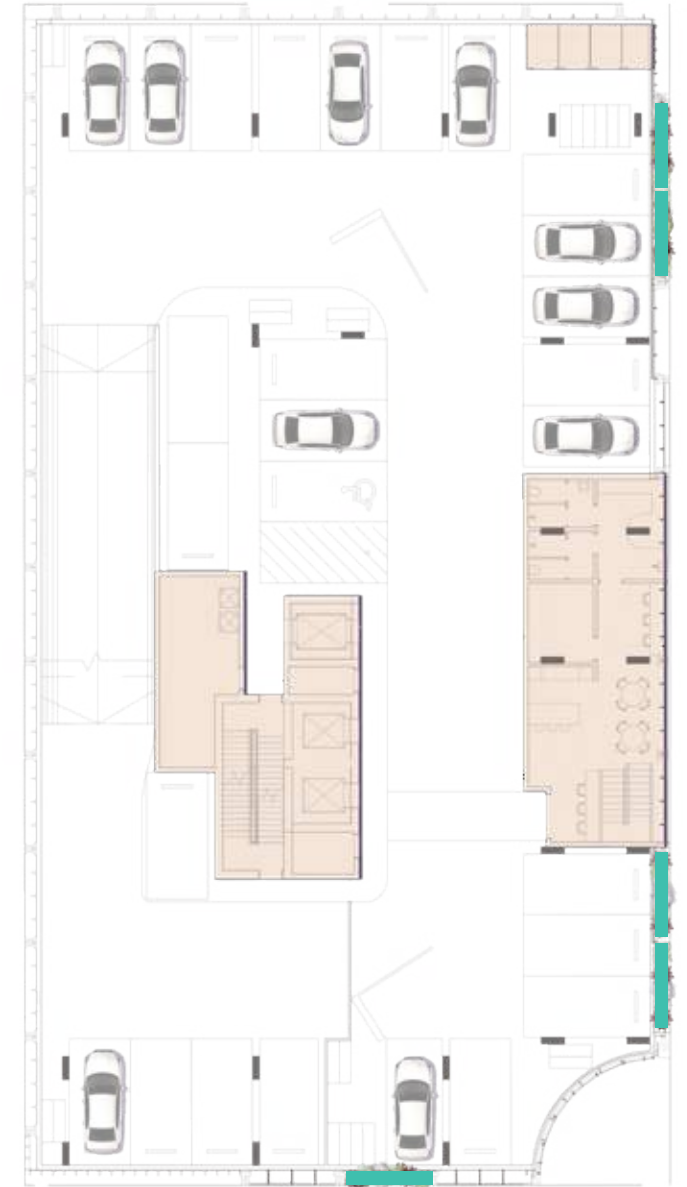


On Podium planting - levels 01.

NTS

Legend

- Podium planting 600mm depth



On Podium planting - Level 2

NTS

Legend

- Podium planting 600mm depth



On Podium planting - Level 4

NTS

Legend

- Podium planting 600mm depth
- Podium planting 1200mm depth



On Podium planting - Level 05-11

NTS

Legend

- Podium planting 600mm depth
- Podium planting 200mm depth (Fytogreen system) to level



On Podium planting - Level 12

NTS

Legend

- Podium planting 600mm depth
- Podium planting 200mm depth (Fytogreen system)

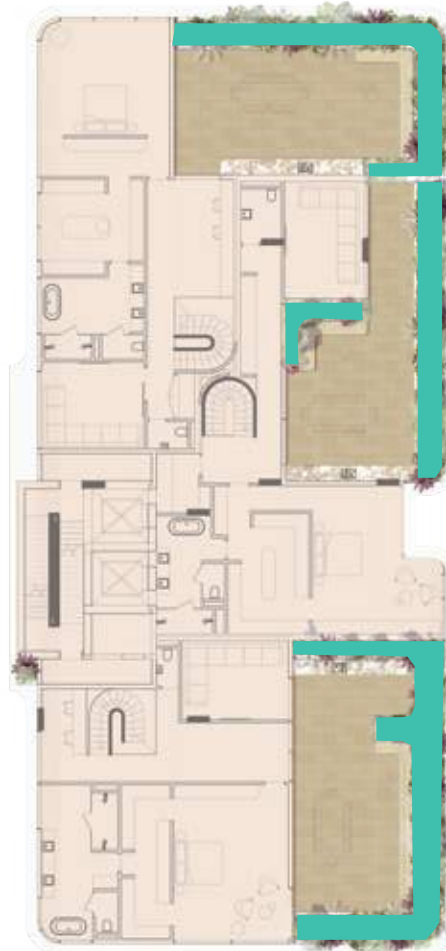


On Podium planting - Level 13-21

NTS 

Legend

 Podium planting 600mm depth

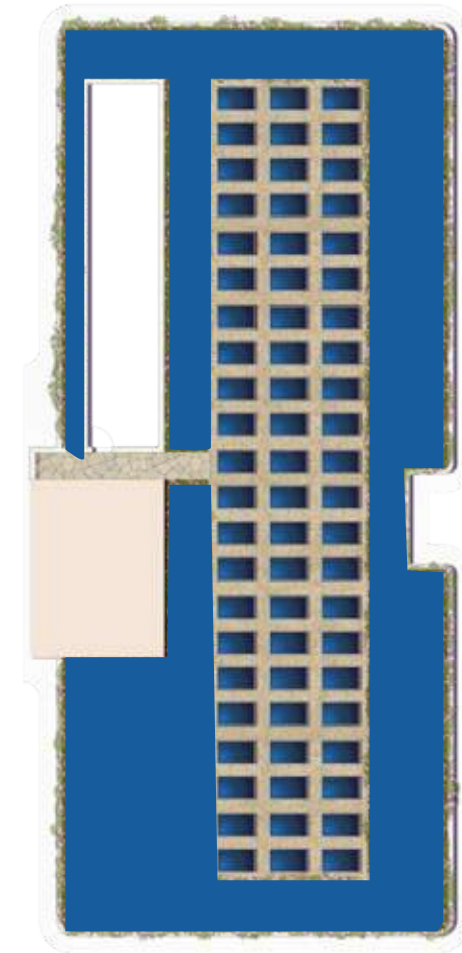


On Podium planting - Level 22

NTS 

Legend

 Podium planting 600mm depth



On Podium planting - Level 23

NTS 

Legend

 Podium planting 200mm depth (Fytogreen system)



Irrigation Design Australia

5 Hercules Street Hamilton

Irrigation Strategy Report

