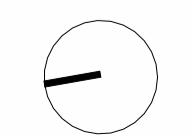
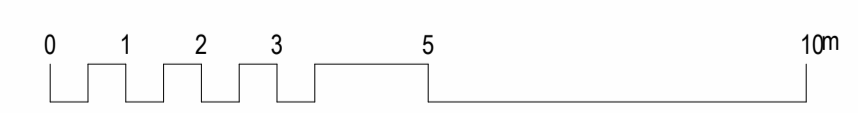


BASEMENT - D.01									
DOOR NO.	LEVEL	LOCATION	Operation	DIMENSIONS		REMARKS	HARDWARE		
				HEIGHT	WIDTH				
B.05	BASEMENT	MEDICAL GASES	FRD, SWING, SINGLE	2440	920	TO SUIT WALL WITH FRL 120/120/120	MORTICE LOCK STORE ROOM FUNCTION AND LEVER FURNITURE; DOOR CLOSER AND RAVEN SMOKE SEALS TO PERIMETER		

BASEMENT - D.02									
DOOR NO.	LEVEL	LOCATION	Operation	DIMENSIONS		REMARKS	HARDWARE		
				HEIGHT	WIDTH				
B.01	BASEMENT	BASEMENT CARPARKING	FRD, SWING, DOUBLE	2040	920	TO SUIT WALL WITH FRL 120/120/120	MORTICE LOCK STORE ROOM FUNCTION AND LEVER FURNITURE DOOR CLOSER TO ACTIVE LEAF. TOP AND BOTTOM DROP BOLTS TO FIXED LEAF		
B.02	BASEMENT	STORE	FRD, SWING, DOUBLE	2040	920	TO SUIT WALL WITH FRL 60/60/60	MORTICE LOCK STORE ROOM FUNCTION AND LEVER FURNITURE; DOOR CLOSER AND RAVEN SMOKE SEALS TO PERIMETER		
B.03	BASEMENT	STORE	FRD, SWING, DOUBLE	2040	920	TO SUIT WALL WITH FRL 60/60/60	MORTICE LOCK STORE ROOM FUNCTION AND LEVER FURNITURE DOOR CLOSER TO ACTIVE LEAF. TOP AND BOTTOM DROP BOLTS TO FIXED LEAF		
B.04	BASEMENT	STORE	FRD, SWING, DOUBLE	2040	920	TO SUIT WALL WITH FRL 60/60/60	MORTICE LOCK STORE ROOM FUNCTION AND LEVER FURNITURE DOOR CLOSER TO ACTIVE LEAF. TOP AND BOTTOM DROP BOLTS TO FIXED LEAF		
B.06	BASEMENT	BASEMENT CARPARKING	FRD, SWING, DOUBLE	2040	920	TO SUIT WALL WITH FRL 120/120/120	MORTICE LOCK STORE ROOM FUNCTION AND LEVER FURNITURE DOOR CLOSER TO ACTIVE LEAF. TOP AND BOTTOM DROP BOLTS TO FIXED LEAF		

PLANS AND DOCUMENTS
referred to in the PDA
DEVELOPMENT APPROVAL

Approval no: DEV2014/635/22
Date: 02 February 2024



27.11.2023 DA ISSUE - REVISION
22.11.2023 DA ISSUE
10.11.2023 DA ISSUE

PG
PG
PG

WREN STREET MIXED USE DEVELOPMENT
7, 7A & 9-13 Wren St, Bowen Hills, QLD

WREN STREET HEALTH INVESTMENTS PTY LTD

© Copyright
These drawings and designs and the copyright thereof are the property of Thomson Adsett Pty Ltd and must not be used, retained or copied without written permission of Thomson Adsett Pty Ltd. ABN 76 105 314 654 Trading as ThomsonAdsett. Dimensions take precedence over scaling. Do not measure off drawings as print sizes may vary

Telephone +61 7 3840 9999
bne@thomsonadsett.com
128 Robertson Street
Fortitude Valley
Qld 4006 Australia
thomsonadsett.com

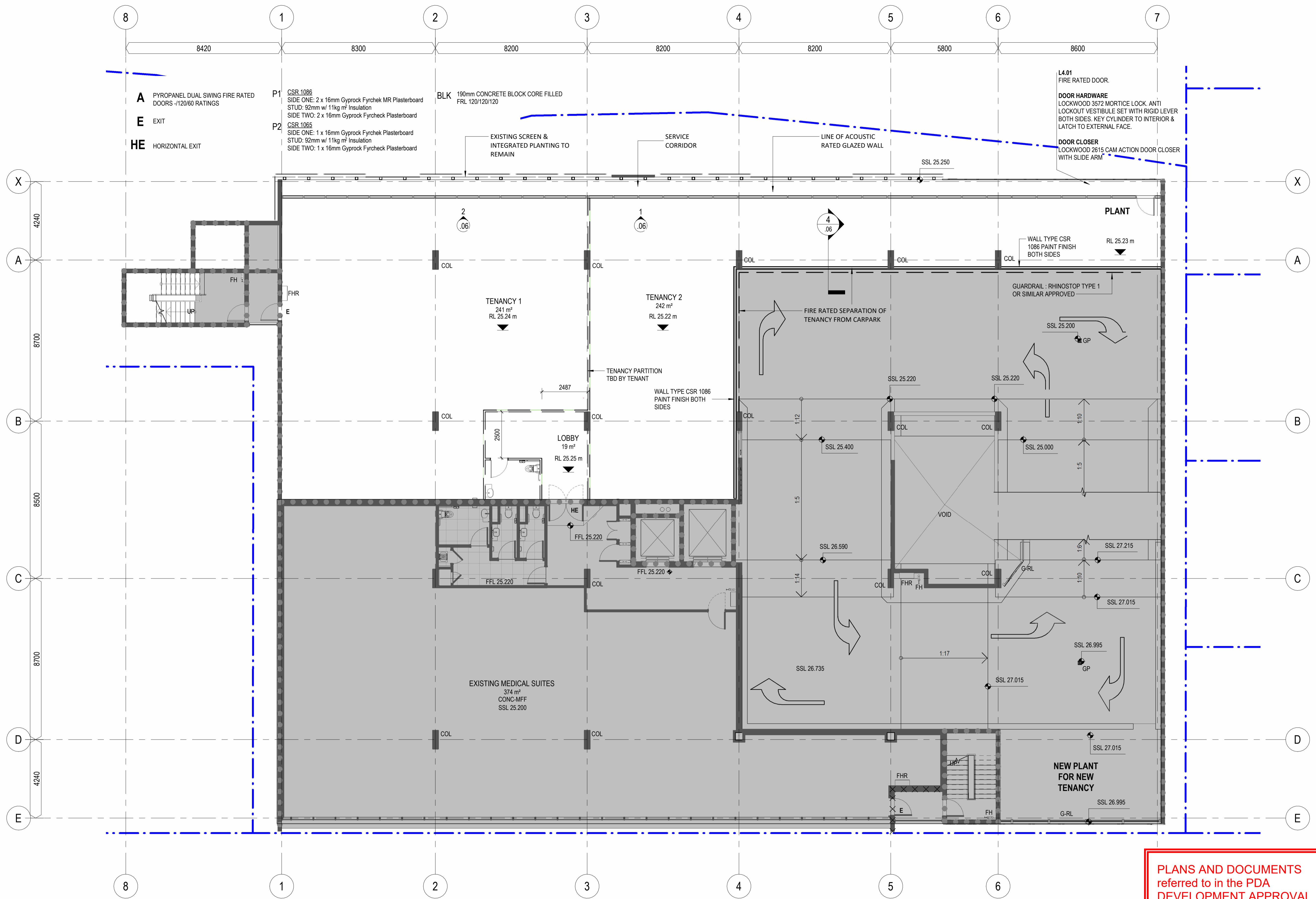


TA # 23.0144.17

FLOOR PLAN - BASEMENT

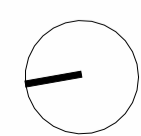
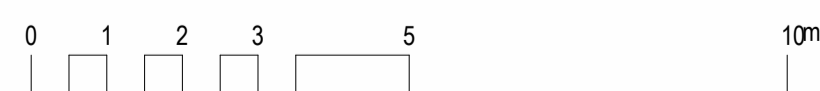
1: 100 @ A1

AA.04



PLANS AND DOCUMENTS
referred to in the PDA
DEVELOPMENT APPROVAL

Approval no: DEV2014/635/22
Date: 02 February 2024



27.11.2023 DA ISSUE - REVISION
22.11.2023 DA ISSUE

PG
PG

WREN STREET MIXED USE DEVELOPMENT
7, 7A & 9-13 Wren St, Bowen Hills, QLD

WREN STREET HEALTH INVESTMENTS PTY LTD

© Copyright
These drawings and designs and the copyright thereof are the property of Thomson Adsett Pty Ltd and must not be used, retained or copied without written permission of Thomson Adsett Pty Ltd. ABN 76 105 314 654 Trading as ThomsonAdsett. Dimensions take precedence over scaling. Do not measure off drawings as print sizes may vary

Telephone +61 7 3840 9999
bne@thomsonadsett.com
128 Robertson Street
Fortitude Valley
Qld 4006 Australia
thomsonadsett.com

**thomson
adsett**

TA # 23.0144.17

FLOOR PLAN - LEVEL 4

1: 100 @ A1

A.05