

LEGEND

SF

TEMPORARY SILT FENCE
FOR SEDIMENT CONTROL

SANDBAGS

GEOTEXTILE SEDIMENT TRAPS
AT PROPOSED STORMWATER PIT

TEMPORARY CONSTRUCTION
ACCESS AND SHAKEDOWN GRID

024812

1:200 (A1); 1:400 (A3)

100mm ON ORIGINAL DRAWING - DO NOT SCALE DRAWING

SHEET SIZE
A1

COORDS:
DATUM:
SCALE:
SURVEYED:
SURVEY DATE:
APPROVED / PROJECT LEADER
TOM OLIVER

C	AMENDED TO SUIT ARCHITECTURAL CHANGE	24.10.23	DC	DC
B	ISSUED FOR APPROVAL	29.08.23	DC	DC
A	ISSUED FOR COORDINATION	18.08.23	DC	DC
REV	AMENDMENT / REASON FOR ISSUE	DATE	DES.	DWN.

PUBLIC UTILITIES:
THE SERVICES SHOWN ARE DERIVED FROM PLANS OBTAINED FROM THE RELEVANT SERVICE AUTHORITIES. IT IS THE RESPONSIBILITY OF THE CONTRACTOR TO ARRANGE WITH THE RELEVANT SERVICE AUTHORITIES FOR CONFIRMATION OF SERVICES AND THEIR LOCATION BEFORE EXCAVATION WORK COMMENCES.

tonkin

tonkin.com.au

NOT FOR CONSTRUCTION

COAST2BAY
BANYA SOCIAL HOUSING
CONCEPT EROSION AND SEDIMENT CONTROL PLAN

FILENAME:
230845-ESC PLAN.DWG

PROJECT NUMBER
230845

DRAWING NUMBER
C010

REVISION
C

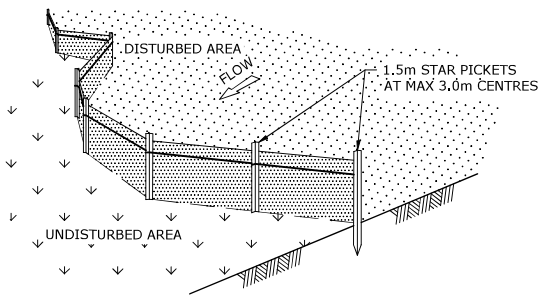
PLANS AND DOCUMENTS
referred to in the PDA
DEVELOPMENT APPROVAL

Approval no: DEV2023/1435
Date: 31 October 2023

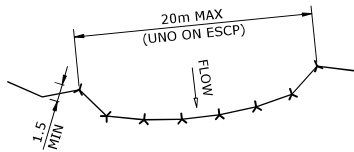
THIS DRAWING IS TO BE VIEWED IN COLOUR AS SOME FEATURES / SYMBOLS ARE DIFFERENTIATED BY COLOUR. DRAWING NOT TO BE RELIED ON IF PRINTED IN GREYSKALE.

© TONKIN CONSULTING

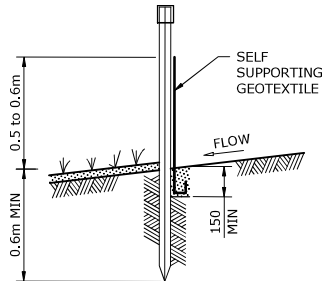
T:\2023\230845 BANYA SOCIAL HOUSING DEVELOPMENT - COAST2BAY HOUSING GROUP\4_WORKING\1 CAD\230845-ESC PLAN.DWG -C010 CONCEPT ESC PLAN- (25-10-23 9:15:56AM)



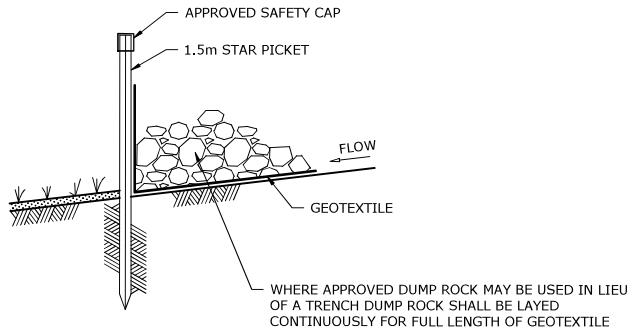
DETAIL - 1



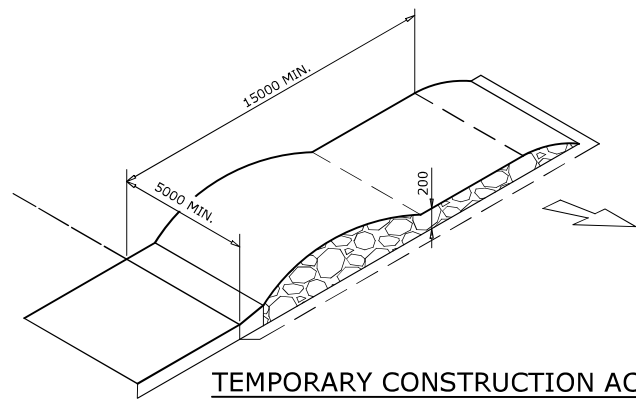
DETAIL - 2



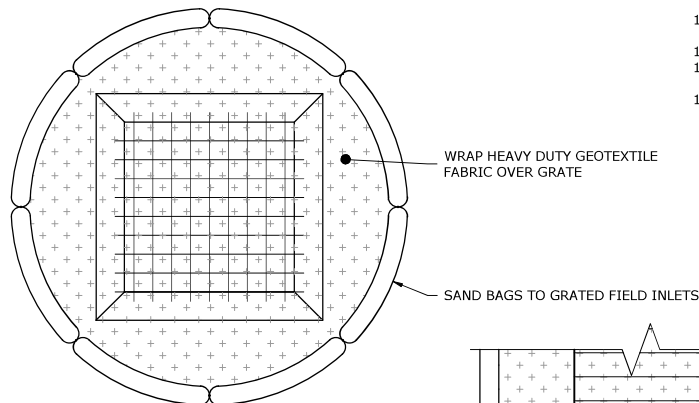
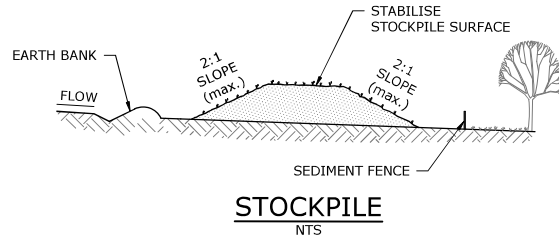
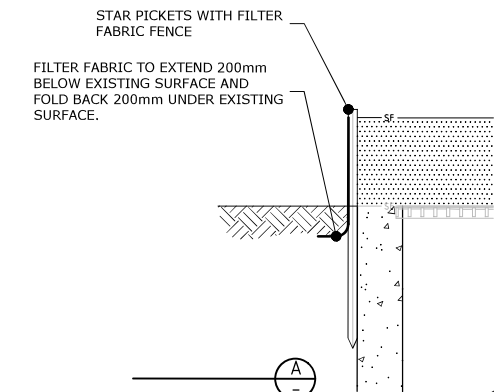
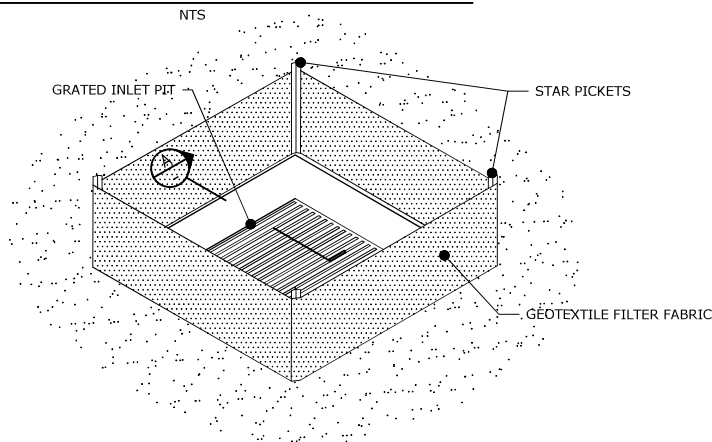
STANDARD FENCE INSTALLATION & ANCHOR DETAIL



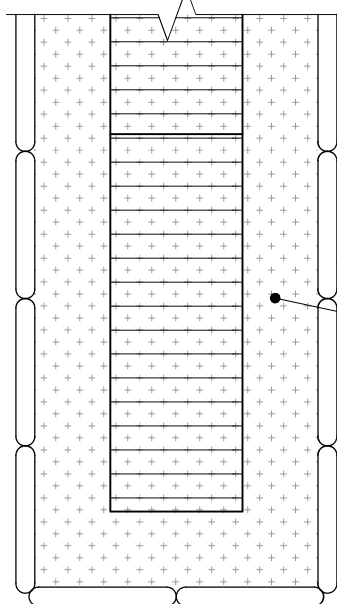
ALTERNATIVE FENCE INSTALLATION AND ANCHOR DETAIL



TEMPORARY CONSTRUCTION ACCESS



INLET GRATED SEDIMENT BARRIER



TYPICAL INLET GRATED DRAINS SEDIMENT BARRIER

SEDIMENT FENCE CONSTRUCTION NOTES:

1. CONSTRUCT ALL SEDIMENT CONTROL FENCES ALONG THE CONTOUR WHERE POSSIBLE.
2. WHERE SEDIMENT CONTROL FENCES ARE NOT CONSTRUCTED ALONG THE CONTOUR INCORPORATE RETURN PANELS AT REGULAR INTERVALS NOT EXCEEDING 20m.
3. ALL STAR PICKETS SHALL INCORPORATE APPROVED SAFETY CAPS.
4. DIG A 150mm DEEP TRENCH ALONG THE UPSLOPE LINE OF THE FENCE FOR THE BOTTOM OF THE FABRIC TO BE ENTRENCHED, BACKFILL TRENCH OVER BASE FABRIC, FIX SELF-SUPPORTING GEOTEXTILE TO UPSLOPE SIDE OF POSTS WITH WIRE TIES OR AS RECOMMENDED BY GEOTEXTILE MANUFACTURER. JOIN SECTIONS OF FABRIC AT A SUPPORT POST WITH A 150mm OVERLAP.
5. WHERE APPROVED BY THE SUPERINTENDENT DUMP ROCK MAY BE USED TO ANCHOR THE GEOTEXTILE IN LIEU OF A TRENCH.

NOTES

1. ALL WORK SHALL BE GENERALLY CARRIED OUT IN ACCORDANCE WITH LOCAL AUTHORITY REQUIREMENTS AND SUNSHINE COAST COUNCIL GUIDELINES.
2. EROSION AND SEDIMENT CONTROL DRAWINGS AND NOTES ARE PROVIDED FOR THE WHOLE OF THE EXTENT OF WORKS. STAGING THESE WORKS MAY REQUIRE THE DESIGN TO BE MODIFIED AND VARIATION TO THESE DETAILS MAY REQUIRE APPROVAL BY RELEVANT AUTHORITIES.
3. ALL EROSION AND SEDIMENT CONTROL DEVICES TO BE MAINTAINED TO THE SATISFACTION OF THE SUPERINTENDENT AND THE LOCAL AUTHORITY.
4. ALL VEHICLES SHALL ONLY ENTER AND EXIT THE SITE VIA THE NOMINATED TEMPORARY CONSTRUCTION ACCESS.
5. ALL EXITING VEHICLES SHALL BE CLEANED AND INSPECTED BEFORE EXITING.
6. ATTEMPT TO BE MADE TO MINIMISE THE AREA OF SITE BEING DISTURBED AT ANY ONE TIME.
7. FOLLOWING CONSTRUCTION OF STORMWATER PITS, PREVENT SITE RUNOFF ENTERING THE PITS UNLESS SILT FENCES ARE ERECTED AROUND PITS.
8. ALL STOCKPILES OF MATERIALS TO BE PROTECTED FROM SCOUR AND EROSION. STOCKPILES OF LOOSE MATERIALS SHOULD BE AVOIDED NEAR ANY DRAINAGE PITS, ROADWAYS AND NEAR IN WATERCOURSES.
9. CONTRACTOR TO ENSURE ALL NOMINATED DEVICES TO BE REINSTALLED FOLLOWING CLOSURE OF WORKING DAY, MODIFIED AS REQUIRED TO SUIT THE BEST SITE CONDITIONS AT THE TIME.
10. WATER FROM UPSTREAM OF THE SITE TO BE CONTROLLED SUCH THAT IT DOES NOT ENTER THE DISTURBED SITE.
11. MAINTAIN ALL STORMWATER PIPES AND PITS CLEAR OF DEBRIS AND SEDIMENT.
12. STORMWATER SYSTEM AND ALL DEVICES TO BE INSPECTED AND CLEANED OUT AS REQUIRED AFTER EACH STORM EVENT.
13. WATER QUALITY TESTING MUST BE UNDERTAKEN BY SUITABLY QUALIFIED ENVIRONMENTAL CONSULTANT PRIOR TO ANY DISCHARGE OF SITE STORMWATER, GROUNDWATER AND SEEPAGE WATER.
- 13.1. ENVIRONMENTAL CONSULTANT TO OUTLINE PROPOSED AND ONGOING MONITORING MEASURES THAT WILL BE MONITORING THE QUALITY OF WATER DISCHARGED FROM THE SITE. FREQUENCY, VALIDATION, AND ALL CONTINGENCIES TO BE OUTLINED BY CONSULTANT.
- 13.2. ALL REMEDIAL MEASURES AS NOMINATED BY ENVIRONMENTAL CONSULTANT TO BE APPLIED BY CONTRACTOR.
- 13.3. TESTING AND REPORTING TO BE IN COMPLIANCE WITH ALL RELEVANT AUSTRALIAN STANDARDS AND GUIDELINES.

PLANS AND DOCUMENTS referred to in the PDA DEVELOPMENT APPROVAL
Approval no: DEV2023/1435
Date: 31 October 2023



WARNING

BEWARE OF OVERHEAD AND UNDERGROUND SERVICES

THE LOCATION OF OVERHEAD AND UNDERGROUND SERVICES ARE APPROXIMATE ONLY AND THEIR EXACT POSITION SHOULD BE PROVEN ON SITE
NO GUARANTEE IS GIVEN THAT ALL SERVICES ARE SHOWN
REFER TO ASSET OWNER FOR THEIR CLEARANCE AND APPROACH REQUIREMENTS

THIS DRAWING IS TO BE VIEWED IN COLOUR AS SOME FEATURES / SYMBOLS ARE DIFFERENTIATED BY COLOUR. DRAWING NOT TO BE RELIED ON IF PRINTED IN GREYSKALE.

NOT FOR CONSTRUCTION

tonkin

tonkin.com.au

COAST2BAY

BANYA SOCIAL HOUSING
CONCEPT EROSION AND SEDIMENT CONTROL
NOTES & DETAILS

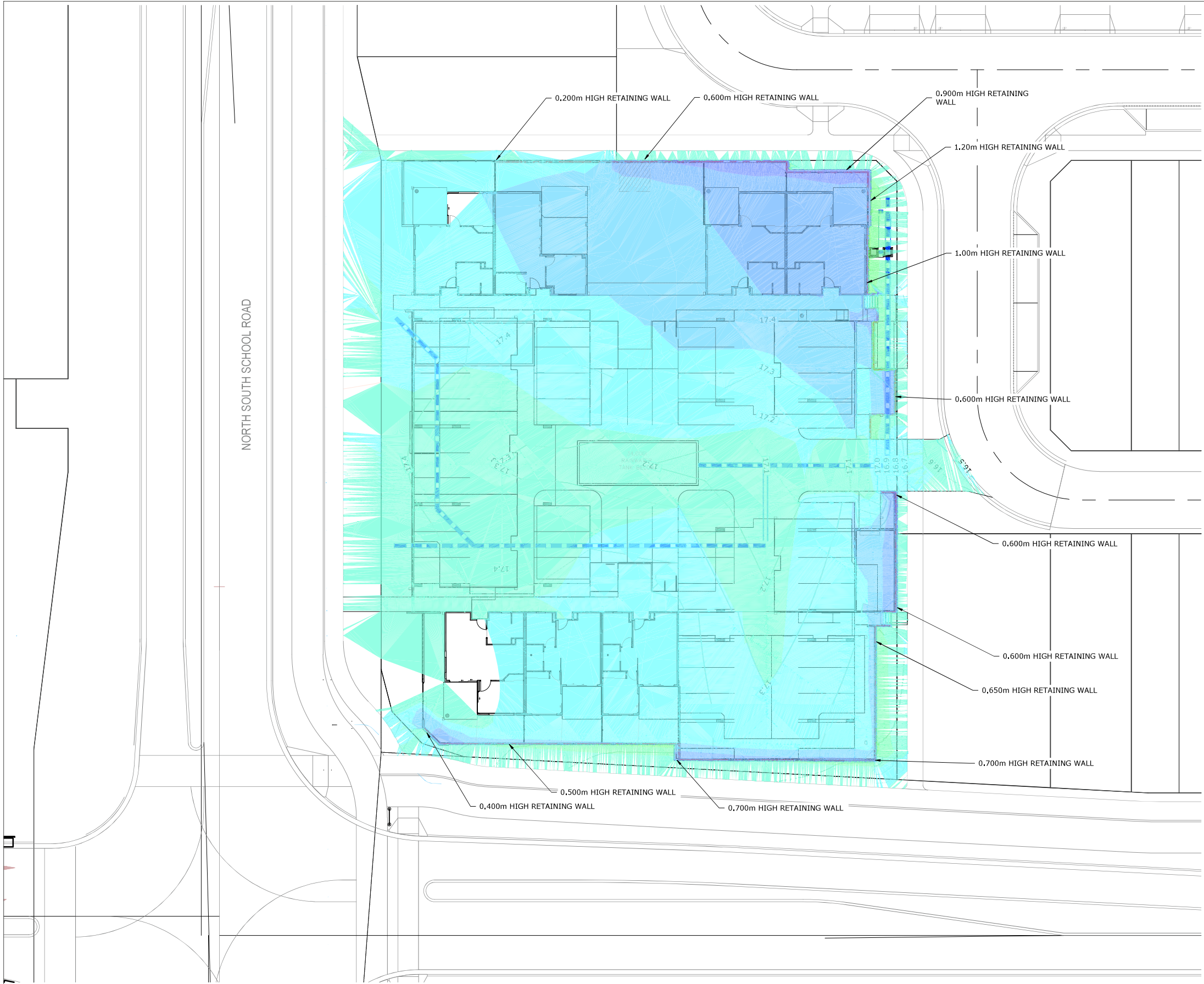
FILENAME: 230845-ESC NOTES AND DETAILS.DWG PROJECT NUMBER: 230845 DRAWING NUMBER: C011 REVISION: C

SHEET SIZE				
A1				
100mm ON ORIGINAL DRAWING - DO NOT SCALE DRAWING				
REV	AMENDMENT / REASON FOR ISSUE	DATE	DES.	DWN.
C	AMENDED TO SUIT ARCHITECTURAL CHANGE	24.10.23	DC	DC
B	ISSUED FOR APPROVAL	29.08.23	DC	DC
A	ISSUED FOR COORDINATION	18.08.23	DC	DC
COORDS:	TOM OLIVER			
DATUM:				
SCALE:				
SURVEYED:				
SURVEY DATE:				
APPROVED / PROJECT LEADER				



PUBLIC UTILITIES:

THE SERVICES SHOWN ARE DERIVED FROM PLANS OBTAINED FROM THE RELEVANT SERVICE AUTHORITIES. IT IS THE RESPONSIBILITY OF THE CONTRACTOR TO ARRANGE WITH THE RELEVANT SERVICE AUTHORITIES FOR CONFIRMATION OF SERVICES AND THEIR LOCATION BEFORE EXCAVATION WORK COMMENCES.



LEGEND

PROPOSED RETAINING WALL

LEGEND - CUT / FILL				Colour
Lower_value	Upper_value			
-1.4	to	-1.2	m	CUT
-1.2	to	-1.0	m	
-1.0	to	-0.8	m	
-0.8	to	-0.6	m	
-0.6	to	-0.4	m	
-0.4	to	-0.2	m	
-0.2	to	0.0	m	
0.0	to	0.2	m	FILL
0.2	to	0.4	m	
0.4	to	0.6	m	
0.6	to	0.8	m	
0.8	to	1.0	m	
1.0	to	1.2	m	
1.2	to	1.4	m	
1.4	to	1.6	m	

EARTHWORKS NOTES

INDICATIVE CUT & FILL VOLUMES:	
TOTAL CUT	~67 m³
TOTAL FILL	343m³
TOTAL BALANCE	276 m³ (FILL)

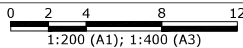
1. VOLUMES HAVE BEEN CALCULATED TO THE FINISHED SURFACE.
2. VOLUMES DO NOT TAKE INTO ACCOUNT ANY BULKING OR COMPACTION OF ANY SOILS.
3. VOLUMES DO NOT TAKE INTO ACCOUNT CONTRACTIBILITY.
4. VOLUMES DO NOT TAKE INTO ACCOUNT SERVICE TRENCHES.
5. VOLUMES DO NOT TAKE INTO ACCOUNT CLEARING AND GRUBBING OF SITE.
6. CONTRACTOR TO MAKE AN ALLOWANCE AS REQUIRED TO SUIT MATERIAL AND COMPACTION METHODOLOGY.
7. CONTRACTOR TO COORDINATE TRANSFER AND STOCKPILING OF EXCESS CUT WITH THE PRINCIPAL.
8. REFER TO TECHNICAL SPECIFICATION FOR SITE PREPARATION AND EARTHWORKS REQUIREMENTS.
9. IT IS THE CONTRACTORS RESPONSIBILITY TO PROVIDE ADEQUATE SEDIMENT AND EROSION CONTROL FOR THE DURATION OF CONSTRUCTION WORKS.
10. VOLUMES ARE CALCULATED BASED ON DESIGN INFORMATION FOR SUB-DIVISION CIVIL WORKS.

PLANS AND DOCUMENTS referred to in the PDA DEVELOPMENT APPROVAL

Approval no: DEV2023/1435
Date: 31 October 2023



THIS DRAWING IS TO BE VIEWED IN COLOUR AS SOME FEATURES / SYMBOLS ARE DIFFERENTIATED BY COLOUR. DRAWING NOT TO BE RELIED ON IF PRINTED IN GREYSCALE.



100mm ON ORIGINAL DRAWING - DO NOT SCALE DRAWING

SHEET SIZE
A1



						COORDS: DATUM:
						SCALE:
						SURVEYED: SURVEY DATE:
						APPROVED / PROJECT LEADER
						TOM OLIVER
REV	AMENDMENT / REASON FOR ISSUE	DATE	DES.	DWN.		
C	AMENDED TO SUIT ARCHITECTURAL CHANGE	24.10.23	DC	DC		
B	ISSUED FOR APPROVAL	29.08.23	DC	DC		
A	ISSUED FOR COORDINATION	18.08.23	DC	DC		

PUBLIC UTILITIES:
THE SERVICES SHOWN ARE DERIVED FROM PLANS OBTAINED FROM THE RELEVANT SERVICE AUTHORITIES. IT IS THE RESPONSIBILITY OF THE CONTRACTOR TO ARRANGE WITH THE RELEVANT SERVICE AUTHORITIES FOR CONFIRMATION OF SERVICES AND THEIR LOCATION BEFORE EXCAVATION WORK COMMENCES.

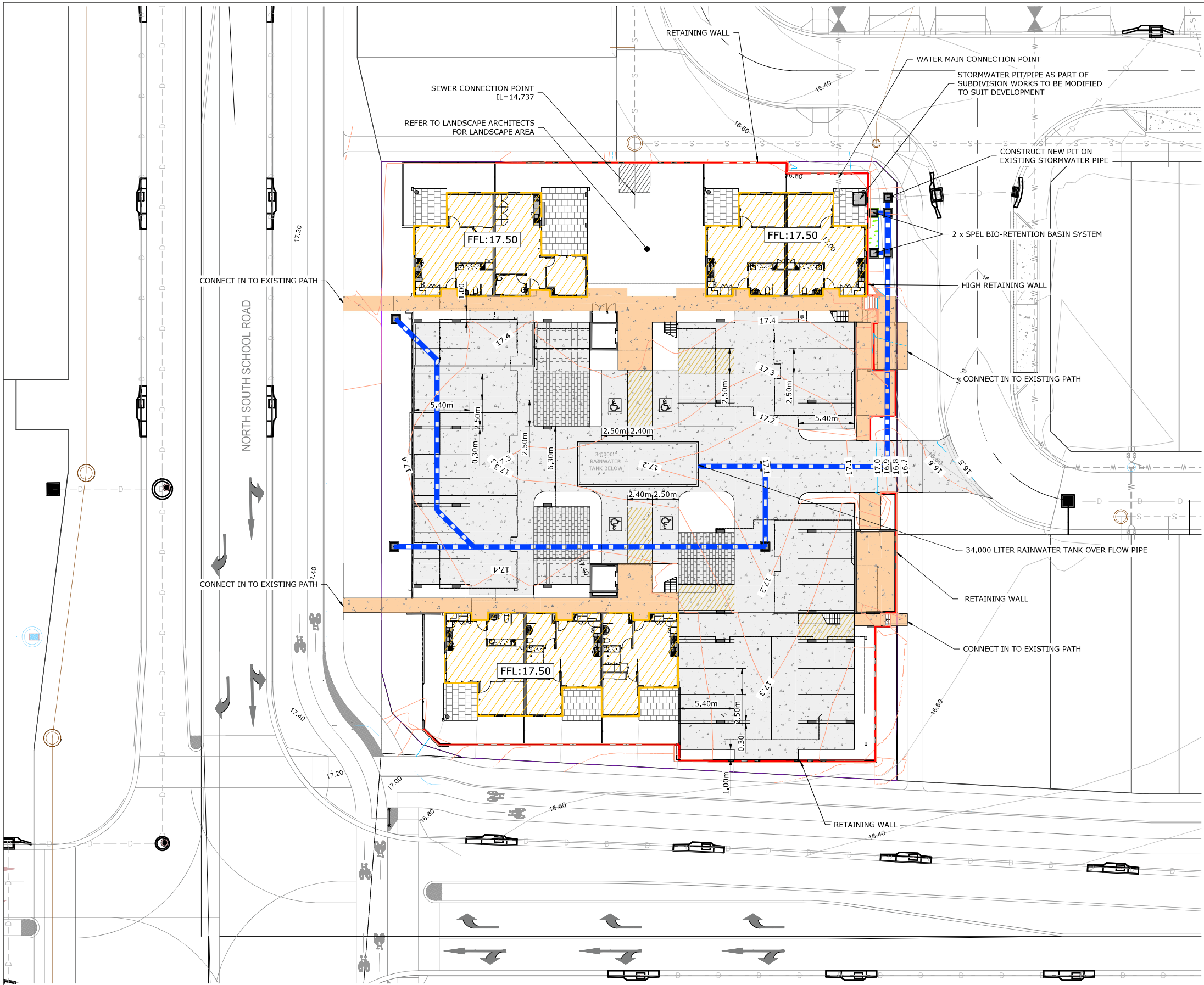


tonkin.com.au

NOT FOR CONSTRUCTION

COAST2BAY
BANYA SOCIAL HOUSING
BULK EARTHWORKS LAYOUT PLAN

FILENAME:	PROJECT NUMBER	DRAWING NUMBER	REVISION
230845-BULK EARTHWORKS.DWG	230845	C050	C



- LEGEND**
- PROPOSED RETAINING WALL
 - CONCRETE PAVEMENT
 - CONCRETE FOOTPATH PAVEMENT
 - PERMEABLE PAVER PAVEMENT
 - PROPOSED BUILDING PAD
 - PROPOSED STORMWATER DRAINAGE
 - PROPOSED STORMWATER PIT
 - EXISTING WATER MAIN
 - EXISTING SEWER MAIN
 - EXISTING STORMWATER DRAINAGE

PLANS AND DOCUMENTS
referred to in the PDA
DEVELOPMENT APPROVAL
Approval no: DEV2023/1435
Date: 31 October 2023

NOTE:
ALL ROOF WATER TO BE DIRECTED INTO RAIN WATER TANK

THIS DRAWING IS TO BE VIEWED IN COLOUR AS
SOME FEATURES / SYMBOLS ARE DIFFERENTIATED
BY COLOUR. DRAWING NOT TO BE RELIED ON IF
PRINTED IN GREYSKALE.

NOT FOR CONSTRUCTION

COAST2BAY
BANYA SOCIAL HOUSING
GENERAL CONSTRUCTION LAYOUT PLAN



tonkin.com.au

FILENAME: 230845-GENCON.DWG PROJECT NUMBER: 230845 DRAWING NUMBER: C100 REVISION: C

SHEET SIZE
A1



PUBLIC UTILITIES:
THE SERVICES SHOWN ARE DERIVED FROM PLANS OBTAINED FROM
THE RELEVANT SERVICE AUTHORITIES. IT IS THE RESPONSIBILITY
OF THE CONTRACTOR TO ARRANGE WITH THE RELEVANT SERVICE
AUTHORITIES FOR CONFIRMATION OF SERVICES AND THEIR
LOCATION BEFORE EXCAVATION WORK COMMENCES.

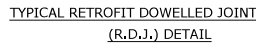
0 2 4 8 12
1:200 (A1); 1:400 (A3)

100mm ON ORIGINAL DRAWING - DO NOT SCALE DRAWING

REV	AMENDMENT / REASON FOR ISSUE	DATE	DES.	DWN.	COORDS: DATUM: SCALE: SURVEYED: SURVEY DATE: APPROVED / PROJECT LEADER TOM OLIVER
C	AMENDED TO SUIT ARCHITECTURAL CHANGE	24.10.23	DC	DC	
B	ISSUED FOR APPROVAL	29.08.23	DC	DC	
A	ISSUED FOR COORDINATION	18.08.23	DC	DC	



(ALTERNATIVE TO RETAINING WALL WHERE LEVELS ALLOW)



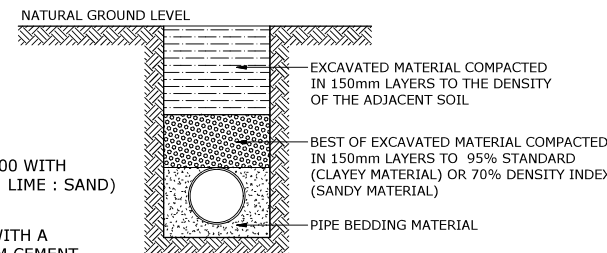
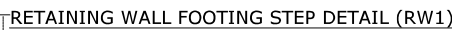
1. ALL THICKNESSES QUOTED ARE COMPACTED,
2. SUBGRADE DESIGN CBR
3. PROVIDE ET1 JOINTING TO ALL SLAB EDGES TYPICAL UNLESS NOTED OTHERWISE
4. REFER LANDSCAPE ARCHITECT FOR FINISHES
5. PROVIDE EJ JOINT TO ALL DOOR THRESHOLDS TO BUILDINGS, PROVIDE IJ ELSEWHERE.



1. ALL THICKNESSES QUOTED ARE COMPACTED,
2. SUBGRADE DESIGN CBR
3. PROVIDE ET1 JOINTING TO ALL SLAB EDGES TYPICAL UNLESS NOTED OTHERWISE
4. REFER LANDSCAPE ARCHITECT FOR FINISHES
5. PROVIDE EJ JOINT TO ALL DOOR THRESHOLDS TO BUILDINGS. PROVIDE IJ ELSEWHERE.

PAVEMENT NOTE

THE CONTRACTOR IS TO COMPLETE SUBGRADE CBR TESTING IN ORDER TO CONFIRM THAT THIS PAVEMENT IS APPROPRIATE. THE EXISTING SUBGRADE WILL NEED TO BE COMPACTED AND PASS AN APPROPRIATE PROOF ROLL AS PER SPECIFICATIONS ON DRAWING C001. ANY SOFT SPOTS WOULD NEED TO BE REPLACED.



SCALE 1:20

TYPICAL STORMWATER DETAILS



RETAINING WALL TYPE 1A

TYPICAL RETAINING WALL DETAILS

RETAINING WALL SCHEDULE FOR TYPE 1A									
WALL TYPE	HEIGHT 'H1' (mm)	HEIGHT 'H2' 300 SERIES (mm)	BASE WIDTH 'B' (mm)	SHEAR 'KEY' DEPTH 'D' (mm)	WALL STARTER BARS	COG 'L'	WALL VERTICAL BARS	FOOTING TOP BARS	MINIMUM SABB (kPa)
1A	1000	-	1050	-	N12-400	300	N12-400	N12-200	100
1A	1200	-	1100	-	N12-400	300	N12-400	N12-200	100
1A	1400	-	1150	-	N16-400	300	N12-400	N12-200	100
1A	1600	-	1200	300	N16-400	300	N12-400	N12-200	125

4. BLOCKS SHALL BE GRADE 15
5. MORTAR SHALL BE CLASS M3 TO AS3700 WITH MIX PROPORTIONS 1 : 1 : 6 (CEMENT : LIME : SAND) USE EFFLORESCENCE INHIBITOR
6. FILL ALL CORES WITH 20MPa GROUT WITH A FLOWABLE CONSISTENCY & A MINIMUM CEMENT CONTENT OF 300kg PER CUBIC METRE
7. PROVIDE BLOCKWORK CONTROL JOINTS AT MAX. 8m CRS U.N.O
8. TOLERANCE ON POSITION OF VERTICAL BARS IN WALL IS ± 5 mm

RETAINING WALL NOTES

DESIGN ASSUMPTIONS.

- MAXIMUM SURCHARGE LOADING ON BACKFILL: 5kPa
- MAXIMUM BACKFILL SLOPE BEHIND & IN FRONT OF WALLS: 1 IN 25
- MAXIMUM FENCE HEIGHT: 1.8M
- WIND DESIGN CRITERIA REGION B, IMPORTANCE FACTOR 1.0

TERRAIN CATEGORY 2.5

REFER SCHEDULE FOR MINIMUM SAFE ALLOWABLE BEARING PRESSURE (SABP) TO U/S OF FOOTING. ENGAGE A GEOTECHNICAL ENGINEER TO VERIFY BEARING PRESSURE CAN BE ACHIEVED CONCRETE SHALL BE GRADE N25

						SHEET SIZE	
						A1	
100mm ON ORIGINAL DRAWING - DO NOT SCALE DRAWING							
						COORDS:	
						DATUM:	
						SCALE:	
						SURVEYED:	
C	AMENDED TO SUIT ARCHITECTURAL CHANGE	24.10.23	DC	DC		SURVEY DATE:	
B	ISSUED FOR APPROVAL	29.08.23	DC	DC		APPROVED / PROJECT LEADER	
A	ISSUED FOR COORDINATION	18.08.23	DC	DC			
REV	AMENDMENT / REASON FOR ISSUE	DATE	DES.	DWN.		TOM OLIVER	



PUBLIC UTILITIES:

THE SERVICES SHOWN ARE DERIVED FROM PLANS OBTAINED FROM THE RELEVANT SERVICE AUTHORITIES. IT IS THE RESPONSIBILITY OF THE CONTRACTOR TO ARRANGE WITH THE RELEVANT SERVICE AUTHORITIES FOR CONFIRMATION OF SERVICES AND THEIR LOCATION BEFORE EXCAVATION WORK COMMENCES.

tonkin 

tonkin.com.au

COAST2BAY

BANYA SOCIAL HOUSING

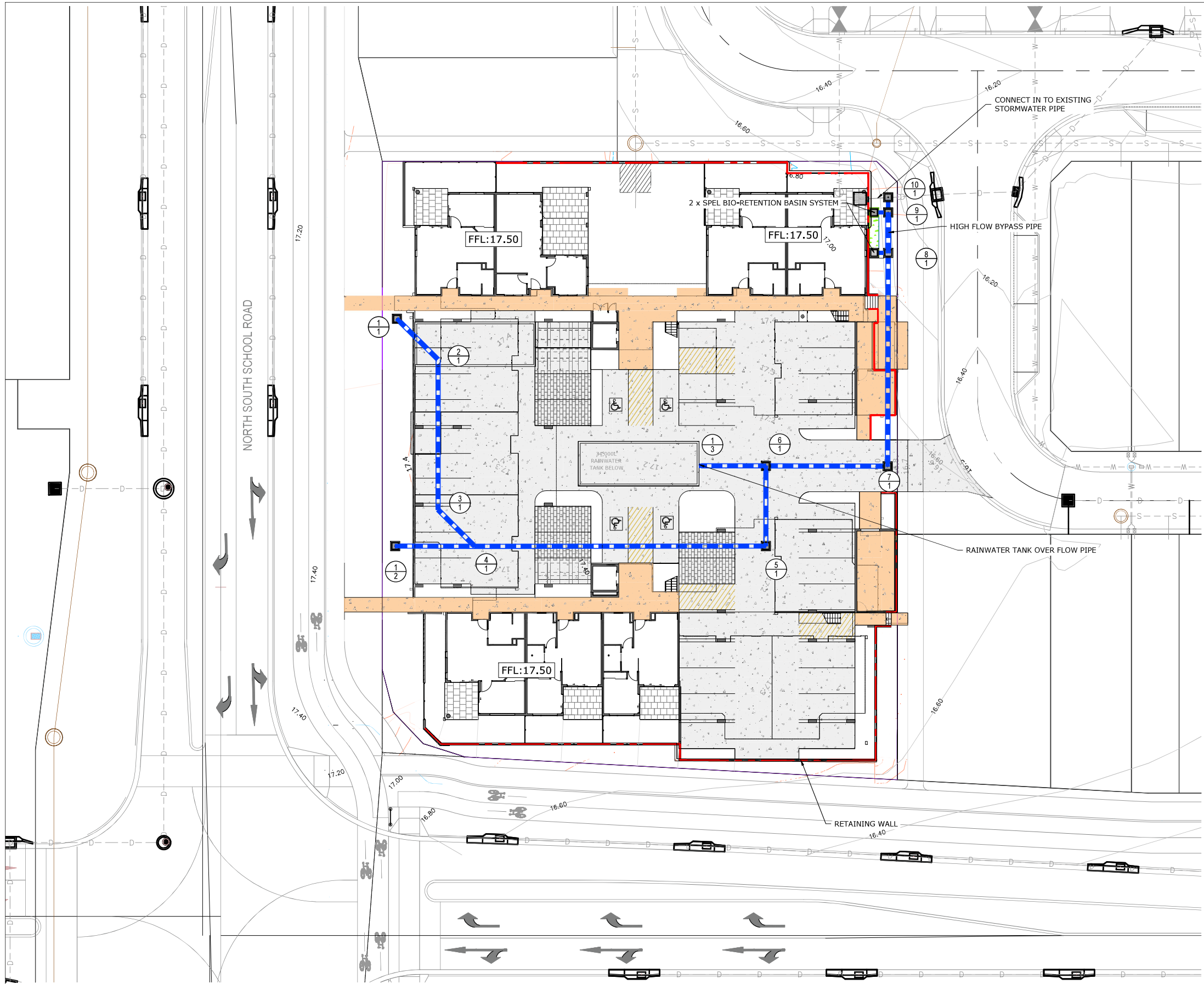
GENERAL CONSTRUCTION NOTES & DETAILS

FILENAME:	PROJECT NUMBER	DRAWING NUMBER	REVISION
230845-CON DETAILS.DWG	230845	C110	C

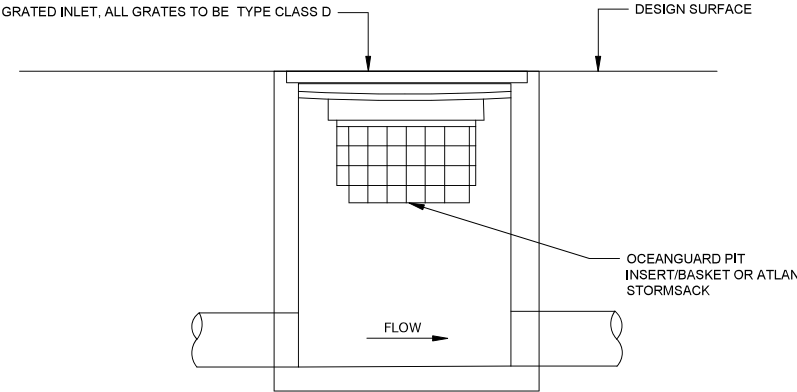
THIS DRAWING IS TO BE VIEWED IN COLOUR AS SOME FEATURES / SYMBOLS ARE DIFFERENTIATED BY COLOUR. DRAWING NOT TO BE RELIED ON IF PRINTED IN GREYSCALE.

NOT FOR CONSTRUCTION

T:\2023\230845 BANYA SOCIAL HOUSING DEVELOPMENT - COAST2BAY HOUSING GROUP\4 WORKING\1 CAD\230845-CON DETAILS.DWG -C110 GENERAL CONSTRUCTION NOTES AND DETAILS- (25-10-23 9:16:45AM)



- LEGEND**
- PROPOSED RETAINING WALL
 - CONCRETE PAVEMENT
 - CONCRETE FOOTPATH PAVEMENT
 - BIO-RETENTION BASIN
 - STORMWATER STRUCTURE ID
 - PROPOSED STORMWATER DRAINAGE
 - PROPOSED STORMWATER PIT
 - EXISTING WATER MAIN
 - EXISTING SEWER MAIN
 - EXISTING STORMWATER DRAINAGE



GTP STORMWATER PIT
REFER TO OCEANGUARD
TECHNICAL MANUAL FOR DETAILS

PLANS AND DOCUMENTS
referred to in the PDA
DEVELOPMENT APPROVAL
Approval no: DEV2023/1435
Date: 31 October 2023



- NOTE:**
- ALL STORMWATER PITS TO BE INSTALLED WITH OCEAN GUARD PIT INSERT/BASKET.REFER TO OCEAN PROTECT FOR DETAILS.
 - REFER ARCHITECTURAL AND LANDSCAPE ARCHITECTURAL DRAWINGS FOR ALL DETAIL LEVELS AND SURFACE FINISHES
 - ALL ROOF WATER TO BE DIRECTED INTO RAIN WATER TANK

THIS DRAWING IS TO BE VIEWED IN COLOUR AS SOME FEATURES / SYMBOLS ARE DIFFERENTIATED BY COLOUR. DRAWING NOT TO BE RELIED ON IF PRINTED IN GREYSKALE.

0 2 4 8 12
1:200 (A1); 1:400 (A3)

100mm ON ORIGINAL DRAWING - DO NOT SCALE DRAWING

SHEET SIZE
A1

						COORDS: DATUM:
						SCALE:
						SURVEYED: SURVEY DATE:
						APPROVED / PROJECT LEADER
						TOM OLIVER
C	AMENDED TO SUIT ARCHITECTURAL CHANGE	24.10.23	DC	DC		
B	ISSUED FOR APPROVAL	29.08.23	DC	DC		
A	ISSUED FOR COORDINATION	18.08.23	DC	DC		
REV	AMENDMENT / REASON FOR ISSUE	DATE	DES.	DWN.		



PUBLIC UTILITIES:
THE SERVICES SHOWN ARE DERIVED FROM PLANS OBTAINED FROM THE RELEVANT SERVICE AUTHORITIES. IT IS THE RESPONSIBILITY OF THE CONTRACTOR TO ARRANGE WITH THE RELEVANT SERVICE AUTHORITIES FOR CONFIRMATION OF SERVICES AND THEIR LOCATION BEFORE EXCAVATION WORK COMMENCES.

tonkin

tonkin.com.au

COAST2BAY
BANYA SOCIAL HOUSING
STORMWATER DRAINAGE LAYOUT PLAN

FILENAME: 230845-DRAINAGE.DWG PROJECT NUMBER: 230845 DRAWING NUMBER: C200 REVISION: C

