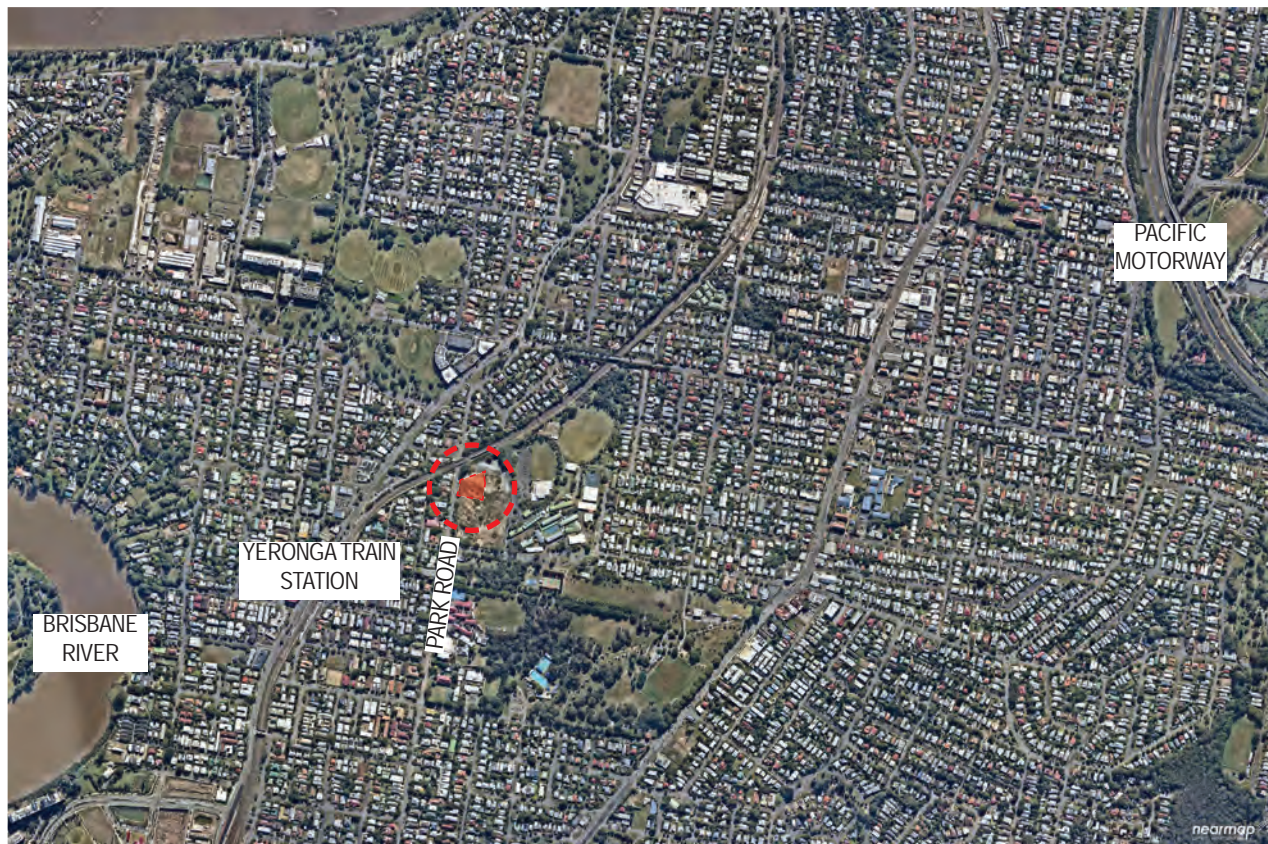


# Affordable Housing Development, Park Road, Yeronga

## Brisbane Housing Company

Landscape DA Approval




► SITE CONTEXT AERIAL NTS



► SITE LOCATION AERIAL NTS

**PLANS AND DOCUMENTS**  
referred to in the PDA  
**DEVELOPMENT APPROVAL**

Approval no: DEV2023/1367  
Date: 21 September 2023



Queensland  
Government





# Overall Site Plan

## LEGEND

- 1 BHC Site
- 2 Adjacent Future Open Space
- 3 Neighbouring Development
- 4 East Road
- 5 Park Road
- 6 North Road
- 7 Train Line
- 8 Planted Riparian Basin
- 9 Planted Batters
- 10 Existing Trees to be Protected
- 11 Tiered Sandstone Seating
- 12 Look out Seating
- 13 Pedestrian Path 1.5m wide





# Basement Level Landscape Plan

## LEGEND

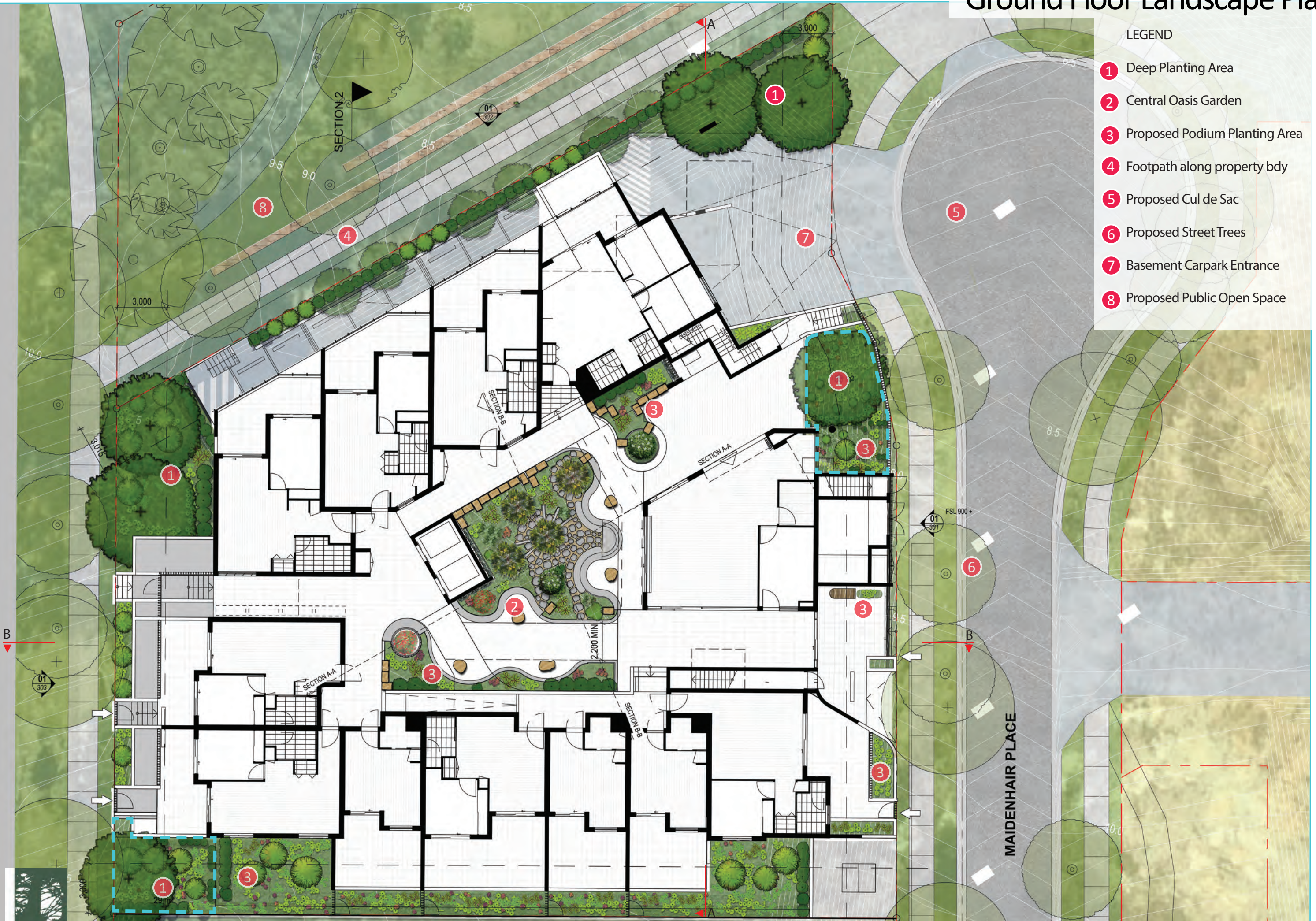
- 1 Deep Planting Area
- 2 Central Oasis Garden
- 3 Screening Planting
- 4 Footpath along property bdy
- 5 Proposed Cul de Sac
- 6 Proposed Street Trees
- 7 Basement Carpark Entrance
- 8 Proposed Public Open Space





# Ground Floor Landscape Plan

- LEGEND
- 1 Deep Planting Area
  - 2 Central Oasis Garden
  - 3 Proposed Podium Planting Area
  - 4 Footpath along property bdy
  - 5 Proposed Cul de Sac
  - 6 Proposed Street Trees
  - 7 Basement Carpark Entrance
  - 8 Proposed Public Open Space





# Central Oasis Planting Area- Sketch Design

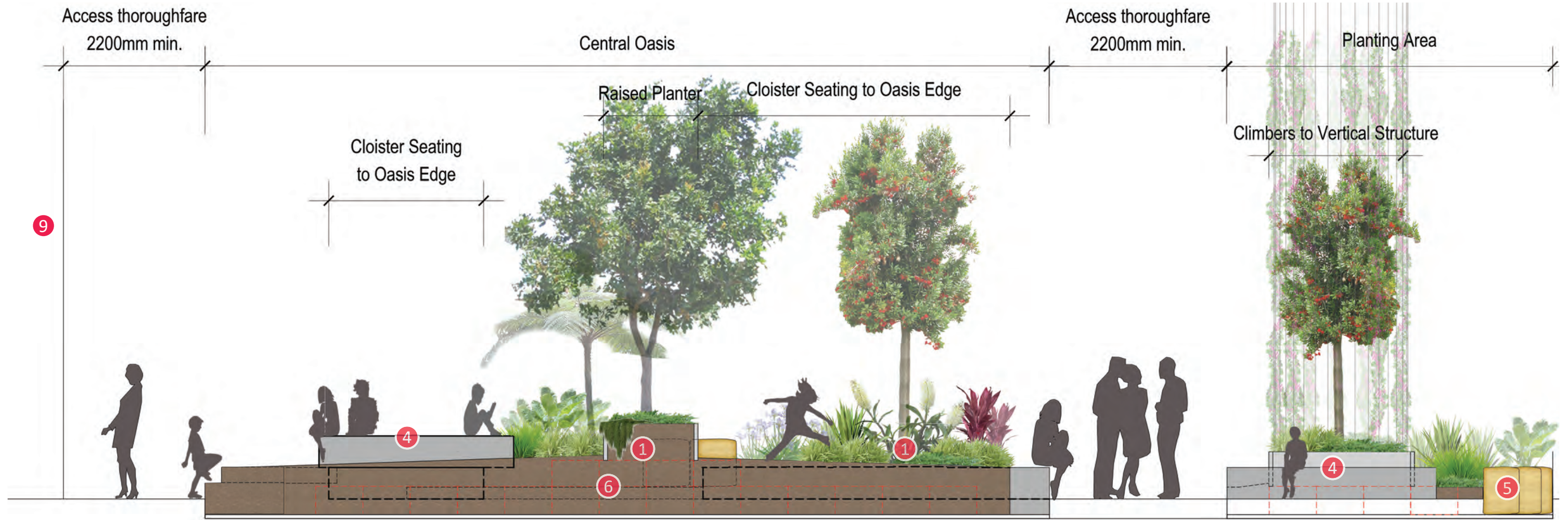


- LEGEND
- 1 Raised Planters
  - 2 Stepper Access
  - 3 Concrete Cloister Seating
  - 4 Feature Sandstone Blocks
  - 5 Feature Natural Rocks
  - 6 Podium Planting Area
  - 7 Climbers to Vertical Structure
  - 8 Timber Finish Access Thoroughfare
  - 9 Columnar Tree through Void above

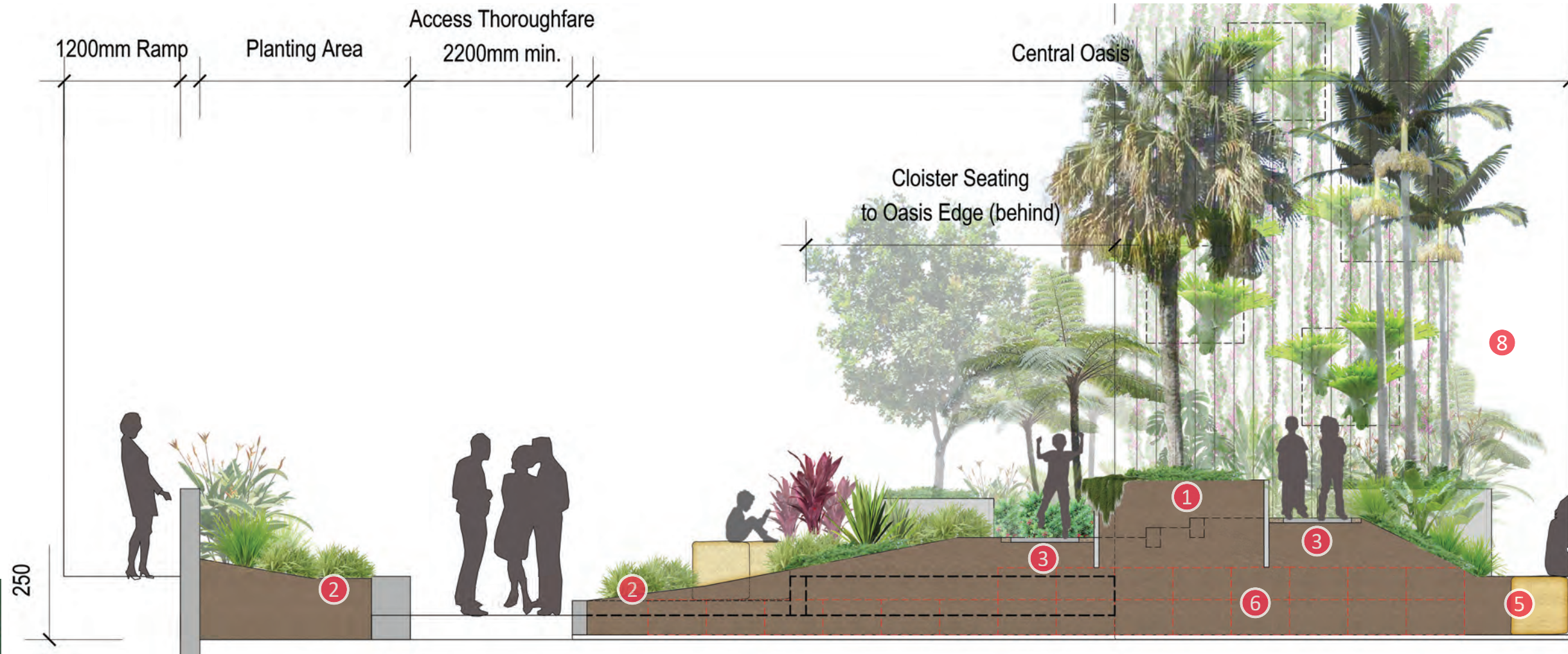




# Central Oasis Planting Area - Sectional Elevations



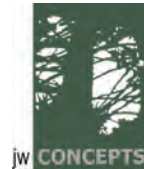
TYPICAL SECTIONAL ELEVATION A-A



TYPICAL SECTIONAL ELEVATION B-B

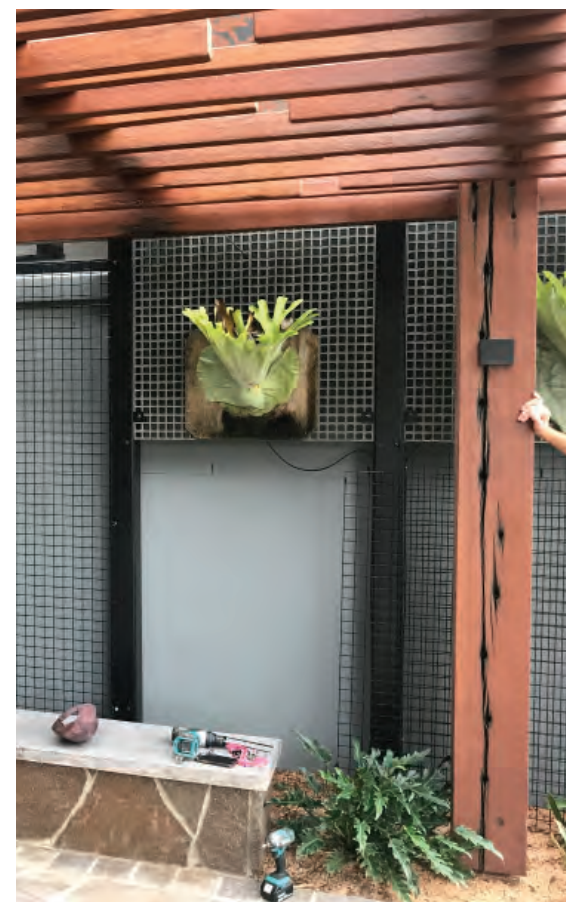
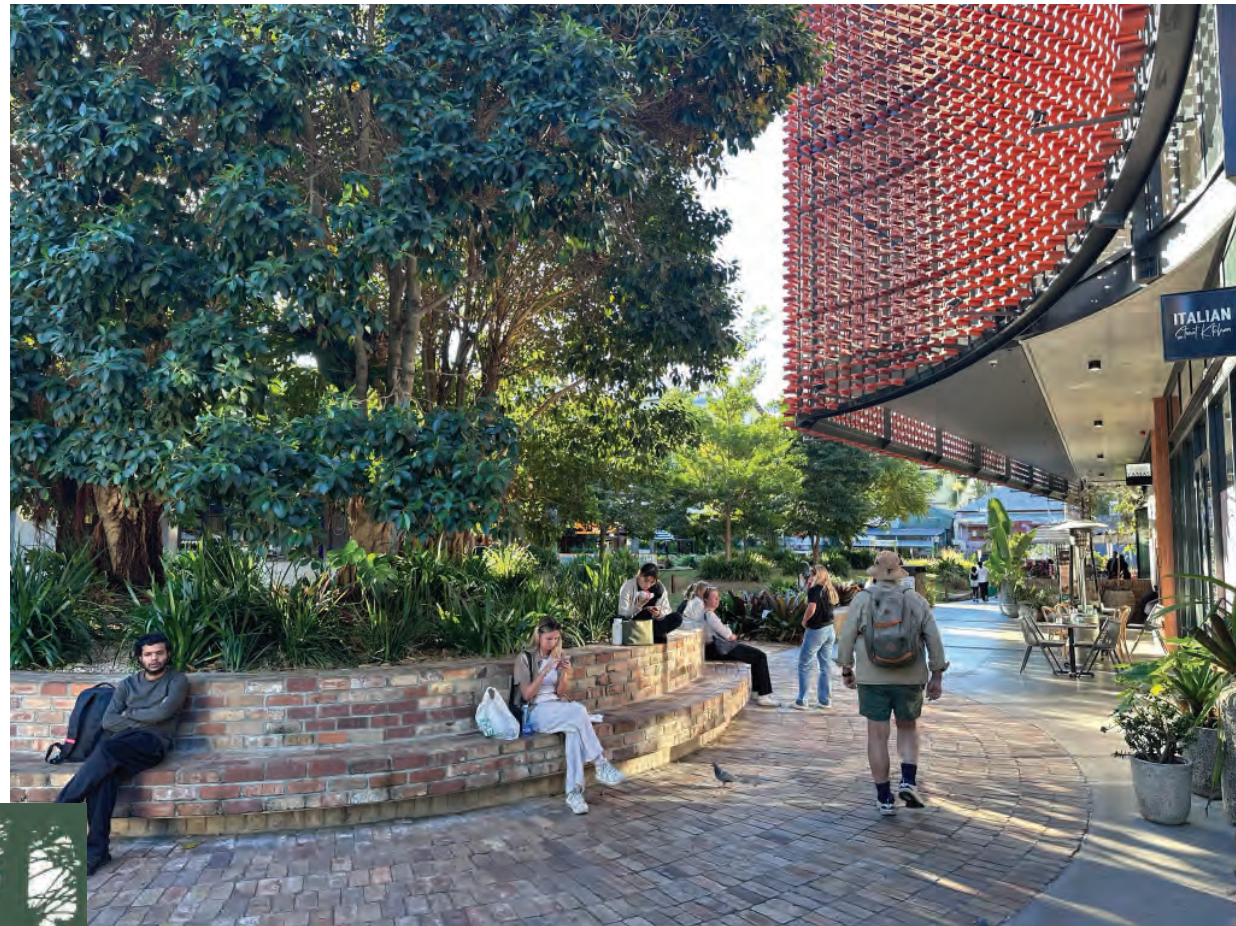
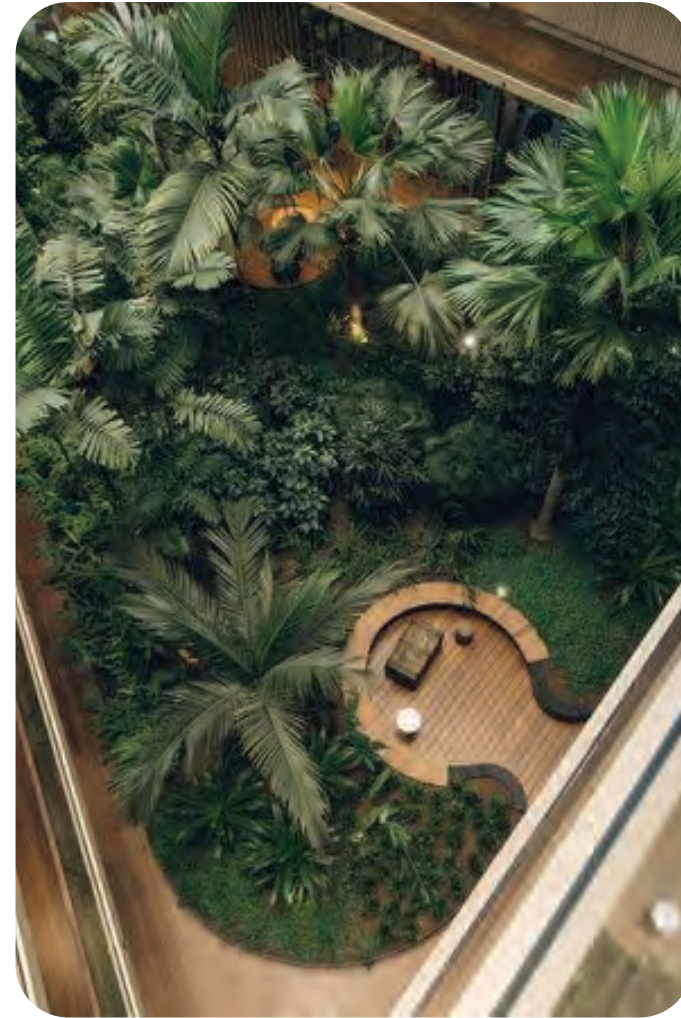
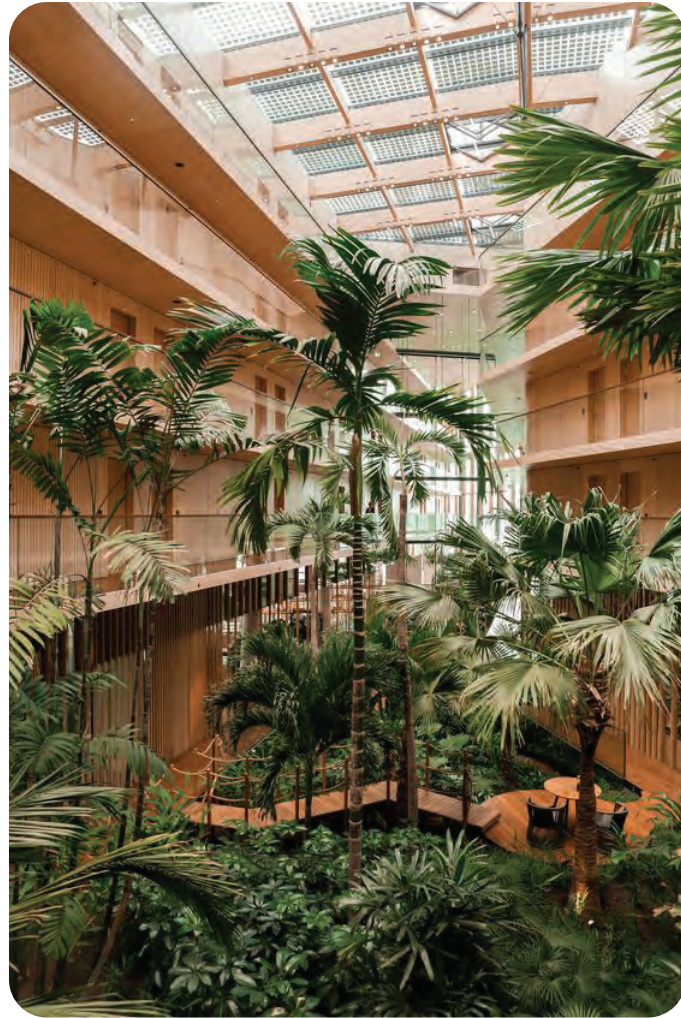
## LEGEND

- 1 Planters on "Terravault" sub-structure
- 2 Low Planting towards Access Areas
- 3 Stepper Access
- 4 Concrete Cloister Seating
- 5 Feature Sandstone Blocks
- 6 Indicative Terravault Cells
- 7 Timber Finish Access Thoroughfare
- 8 Climbers to Lift Shaft Behind
- 9 Community Recreation



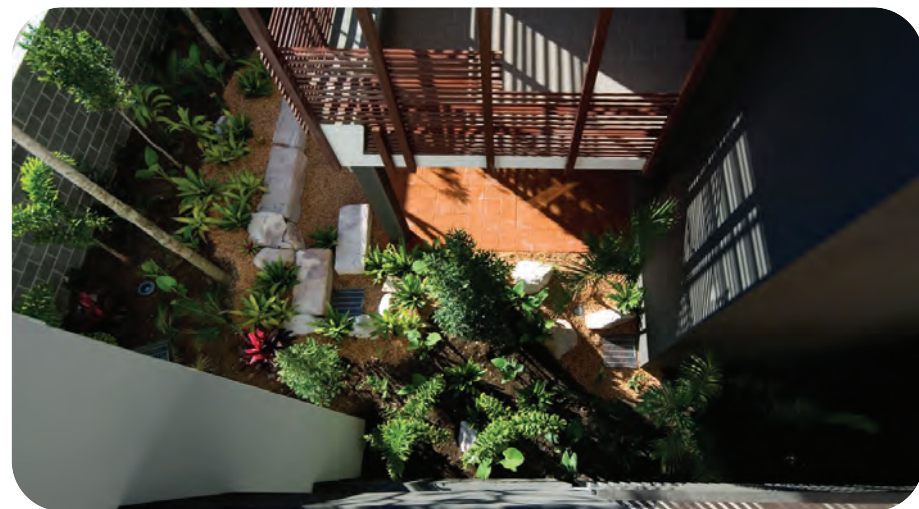


# Central Oasis - Typical Character Imagery





# Central Oasis - Typical Character Imagery

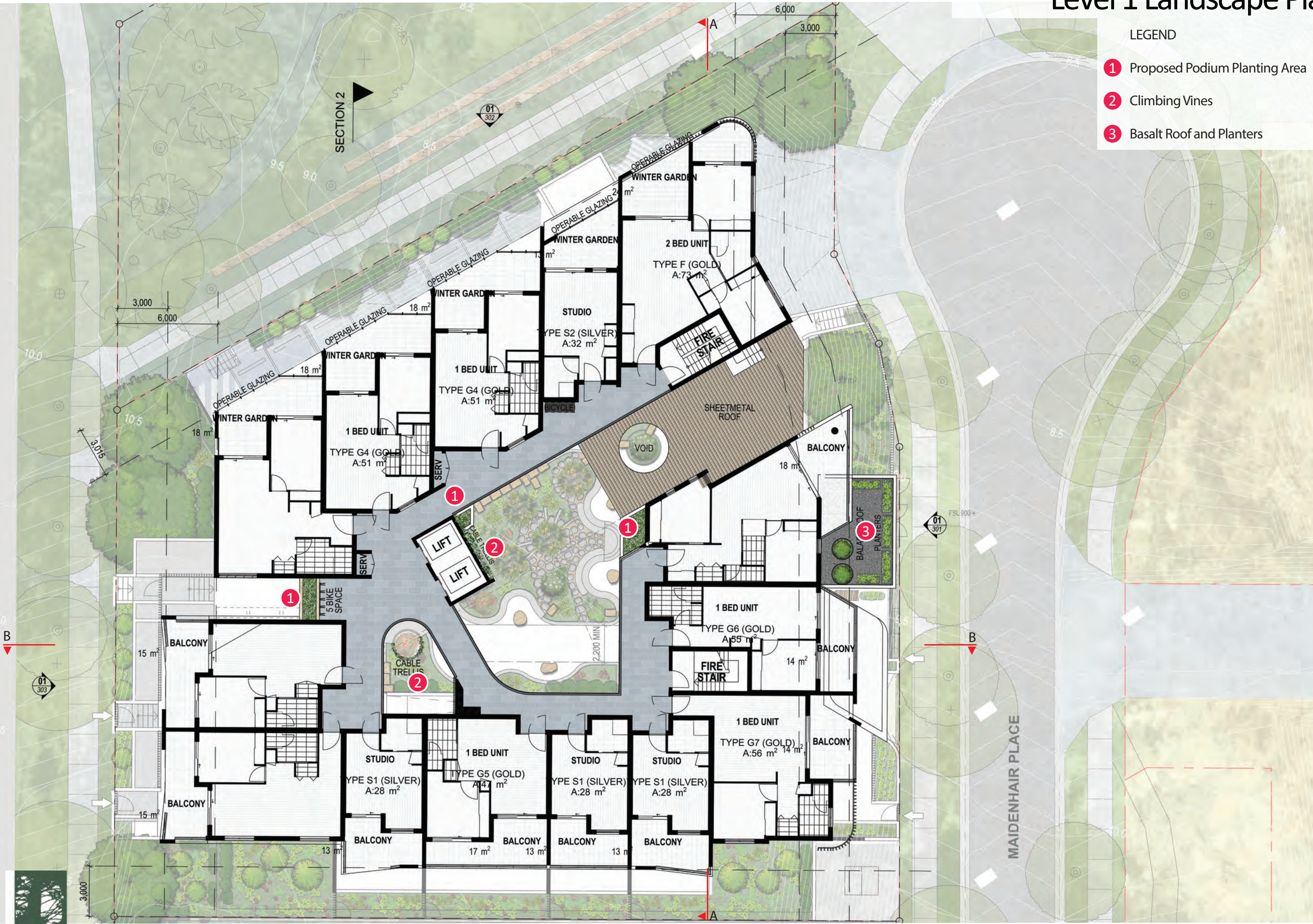




# Level 1 Landscape Plan

## LEGEND

- ① Proposed Podium Planting Area
- ② Climbing Vines
- ③ Basalt Roof and Planters

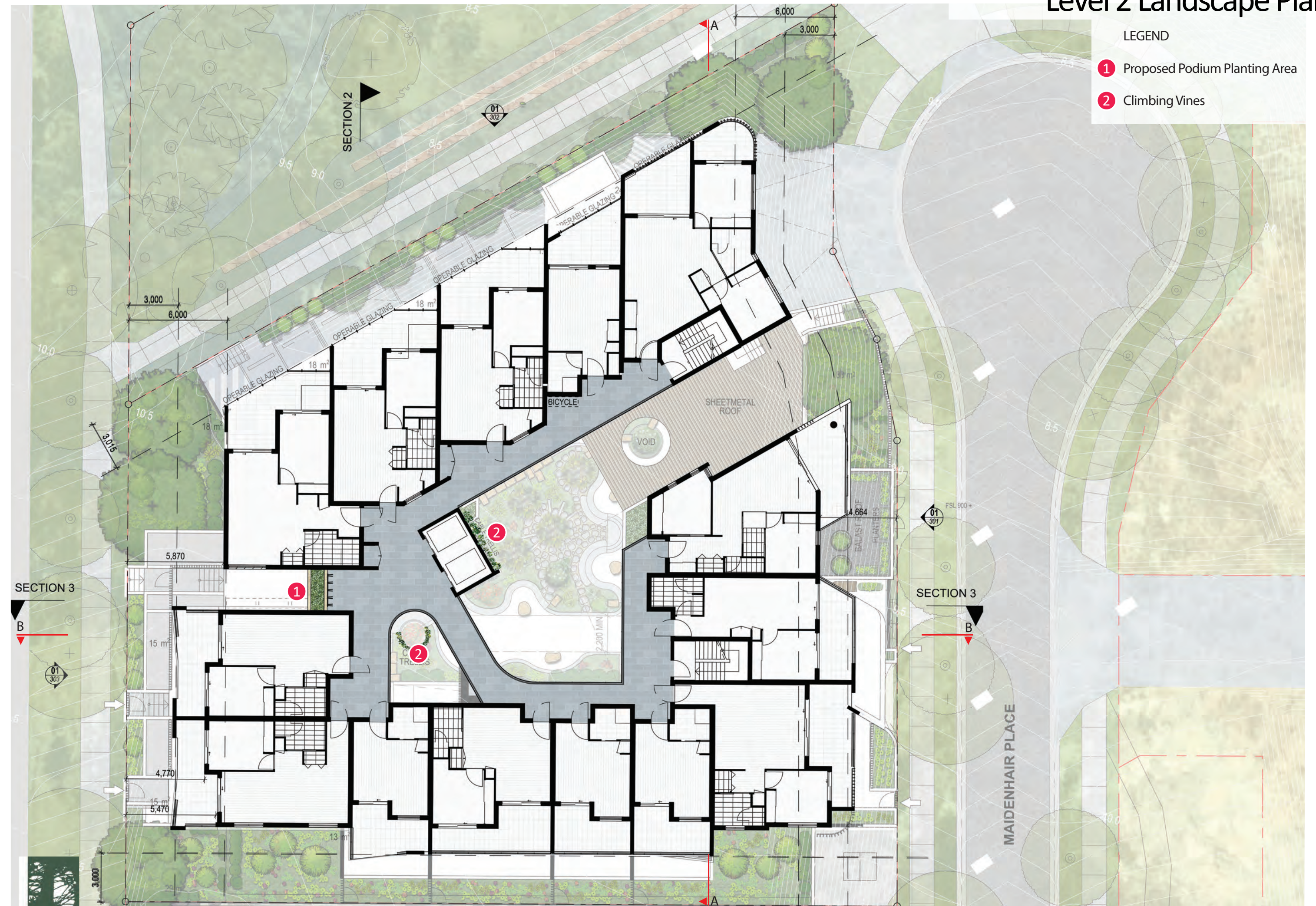




# Level 2 Landscape Plan

## LEGEND

- 1 Proposed Podium Planting Area
- 2 Climbing Vines

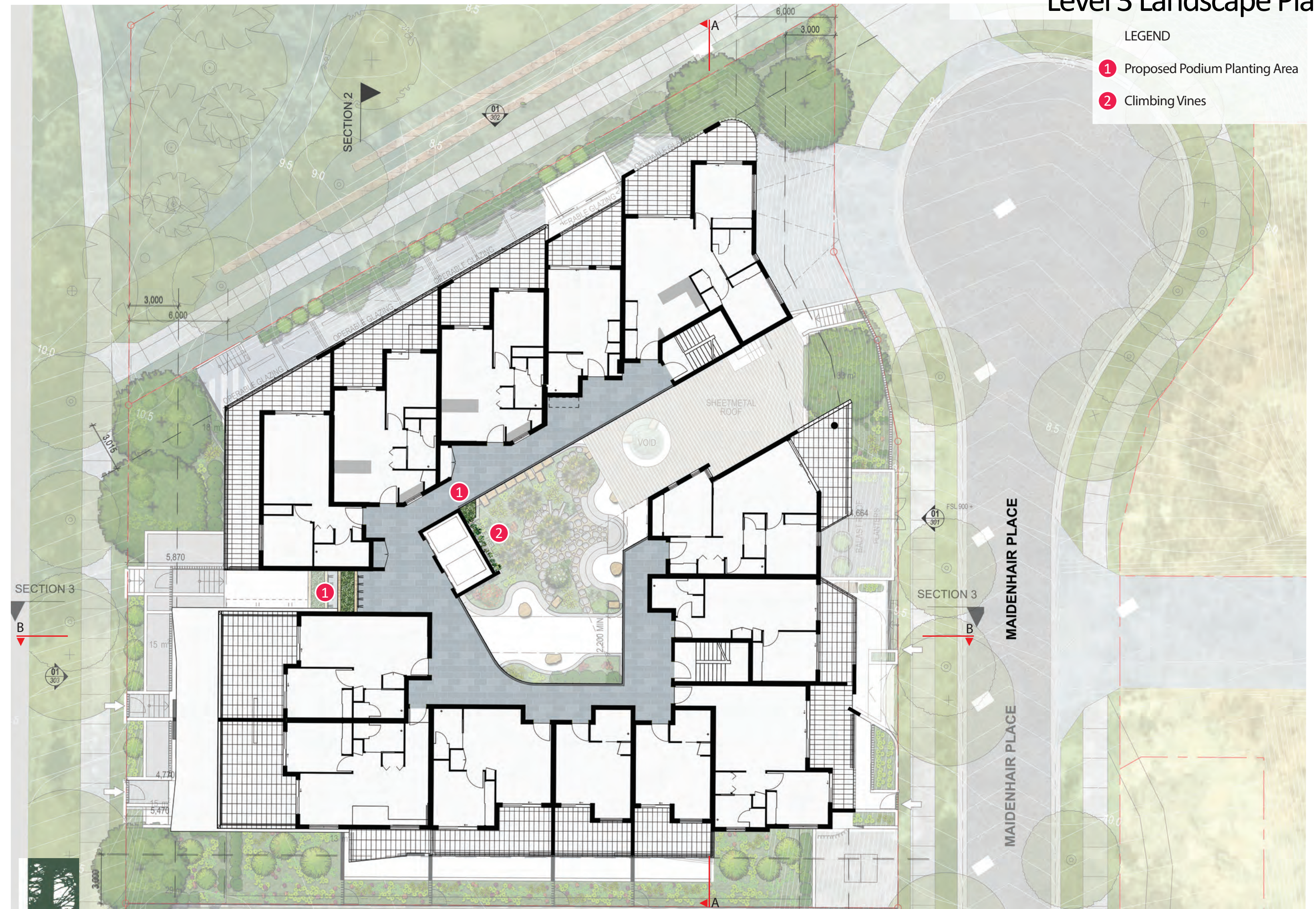




# Level 3 Landscape Plan

## LEGEND

- ① Proposed Podium Planting Area
- ② Climbing Vines

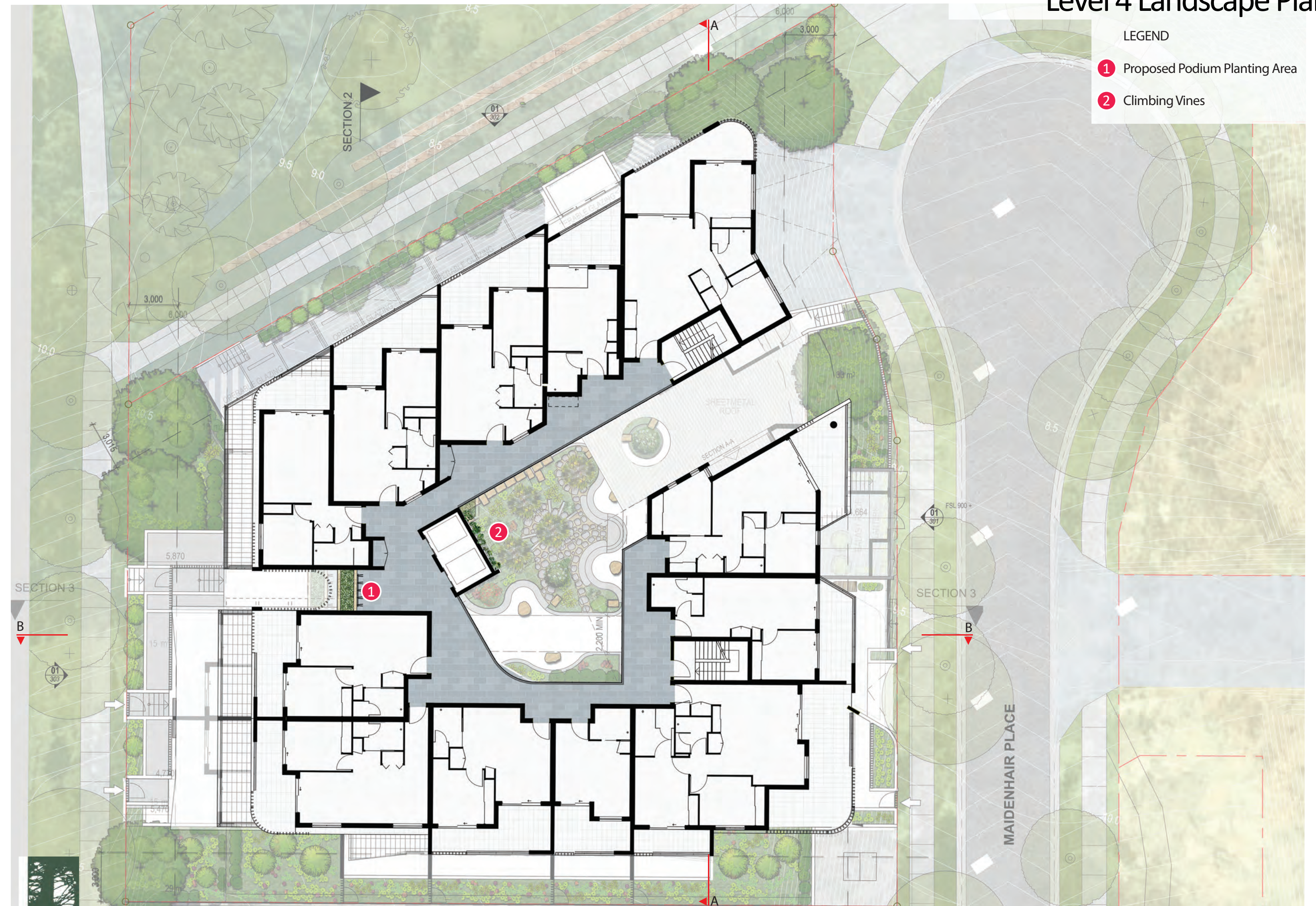




# Level 4 Landscape Plan

## LEGEND

- 1 Proposed Podium Planting Area
- 2 Climbing Vines

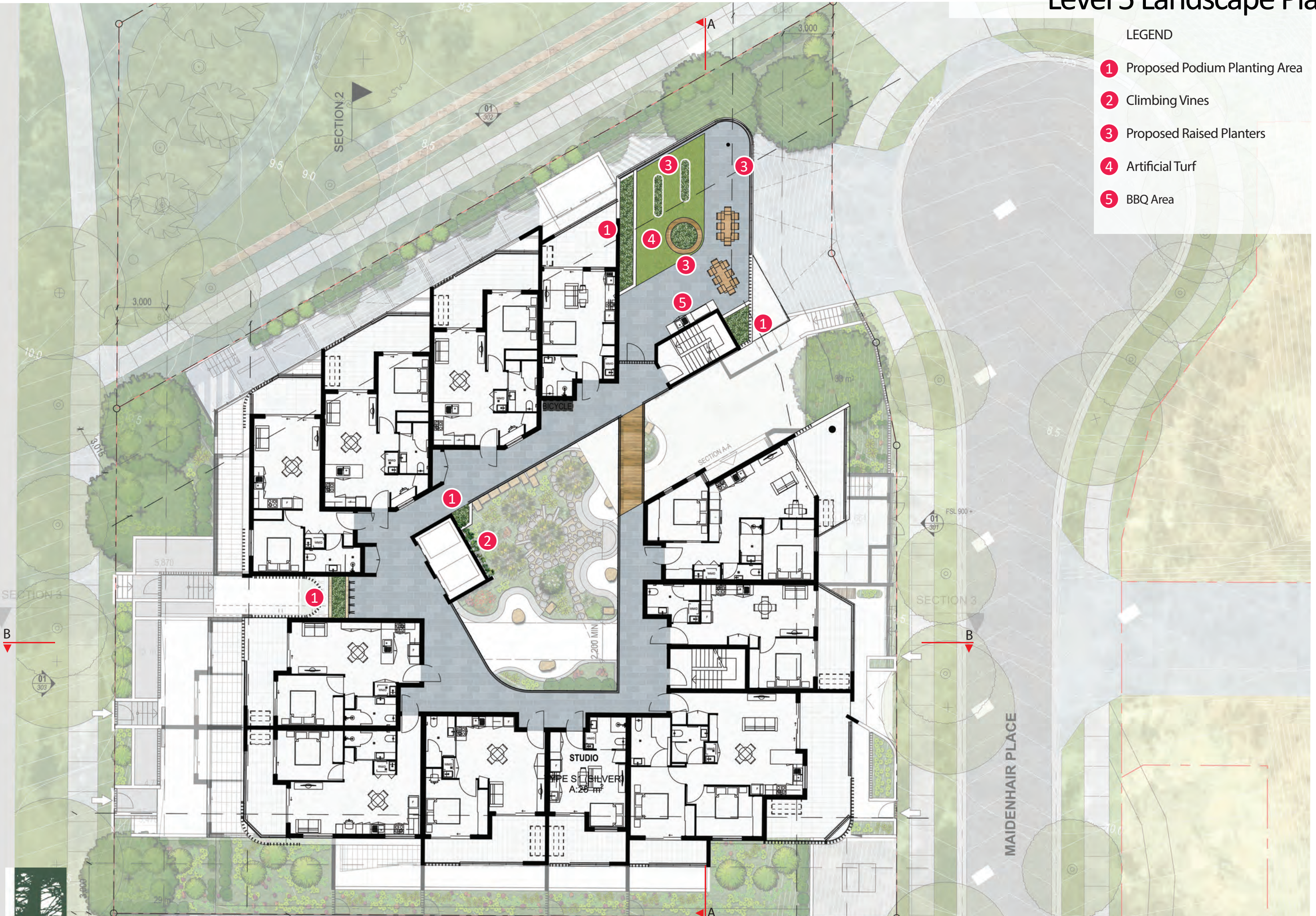




# Level 5 Landscape Plan

## LEGEND

- 1 Proposed Podium Planting Area
- 2 Climbing Vines
- 3 Proposed Raised Planters
- 4 Artificial Turf
- 5 BBQ Area





## LEGEND

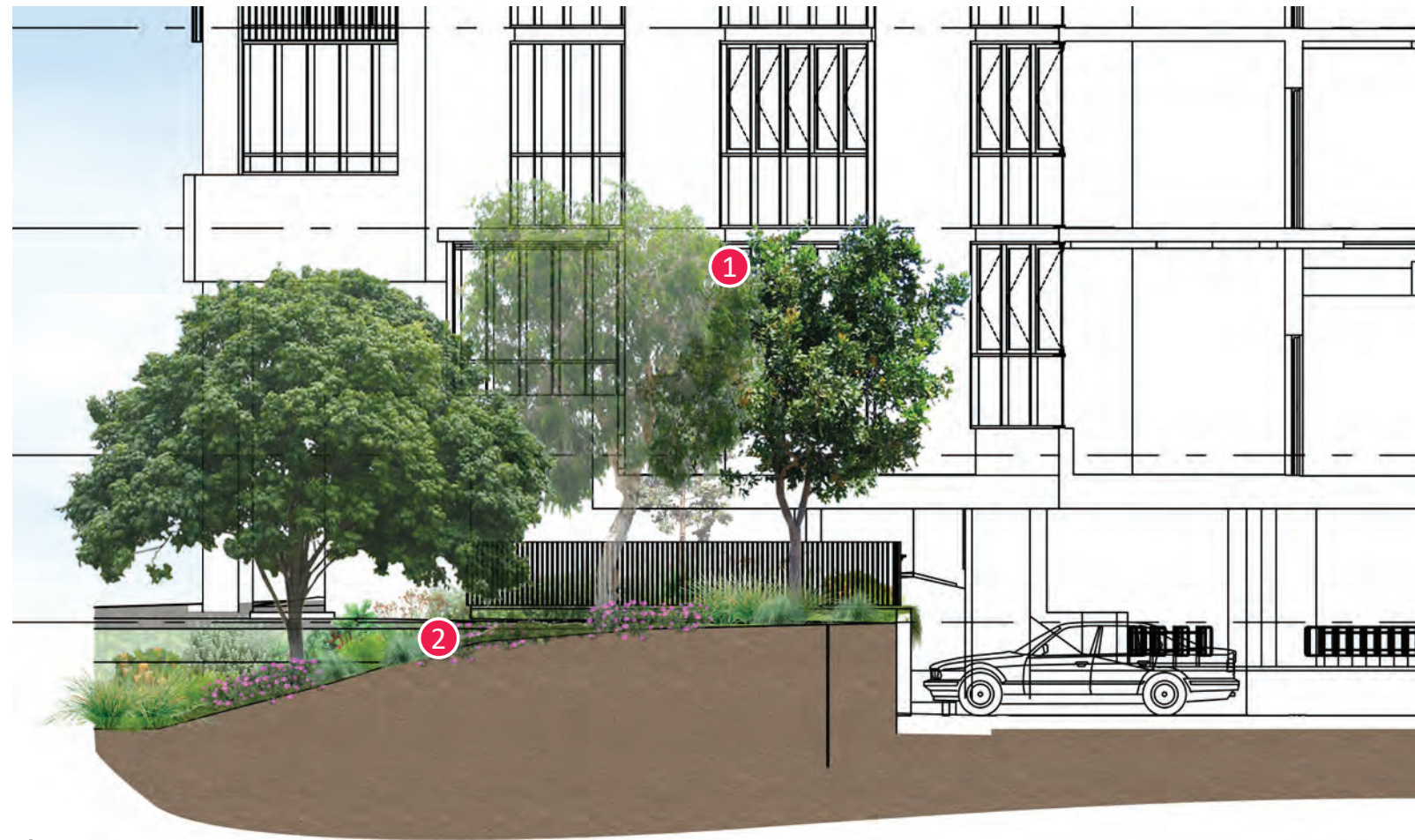
- ① Building
- ② Deep Planting Garden Area
- ③ Boundary Screening
- ④ Neighbouring Property



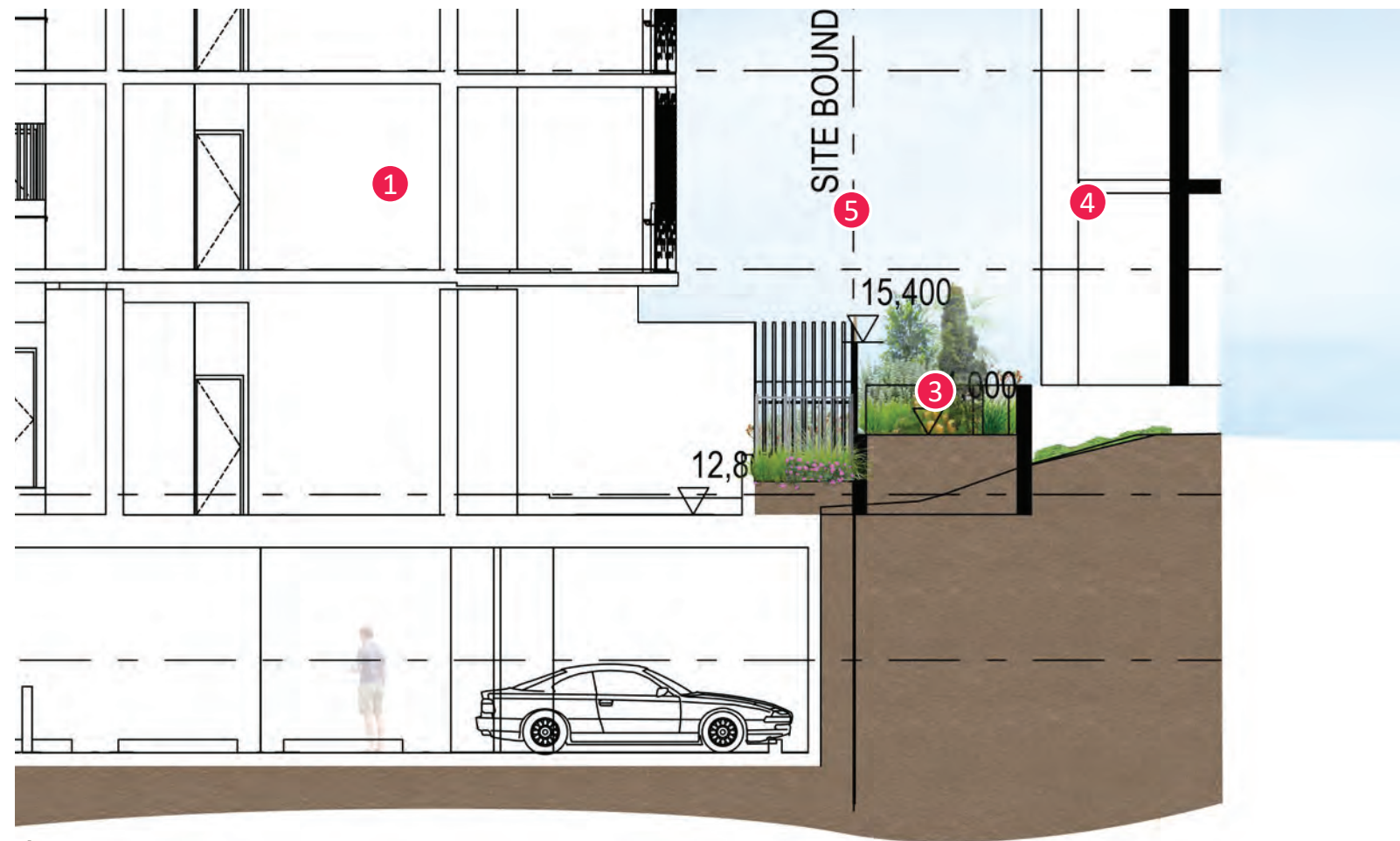


LEGEND

- ① Building
- ② Deep Planting Garden Area
- ③ Boundary Screening
- ④ Neighbouring Property
- ⑤ 1400H Fence to Eastern Bdy



Typical Section A1

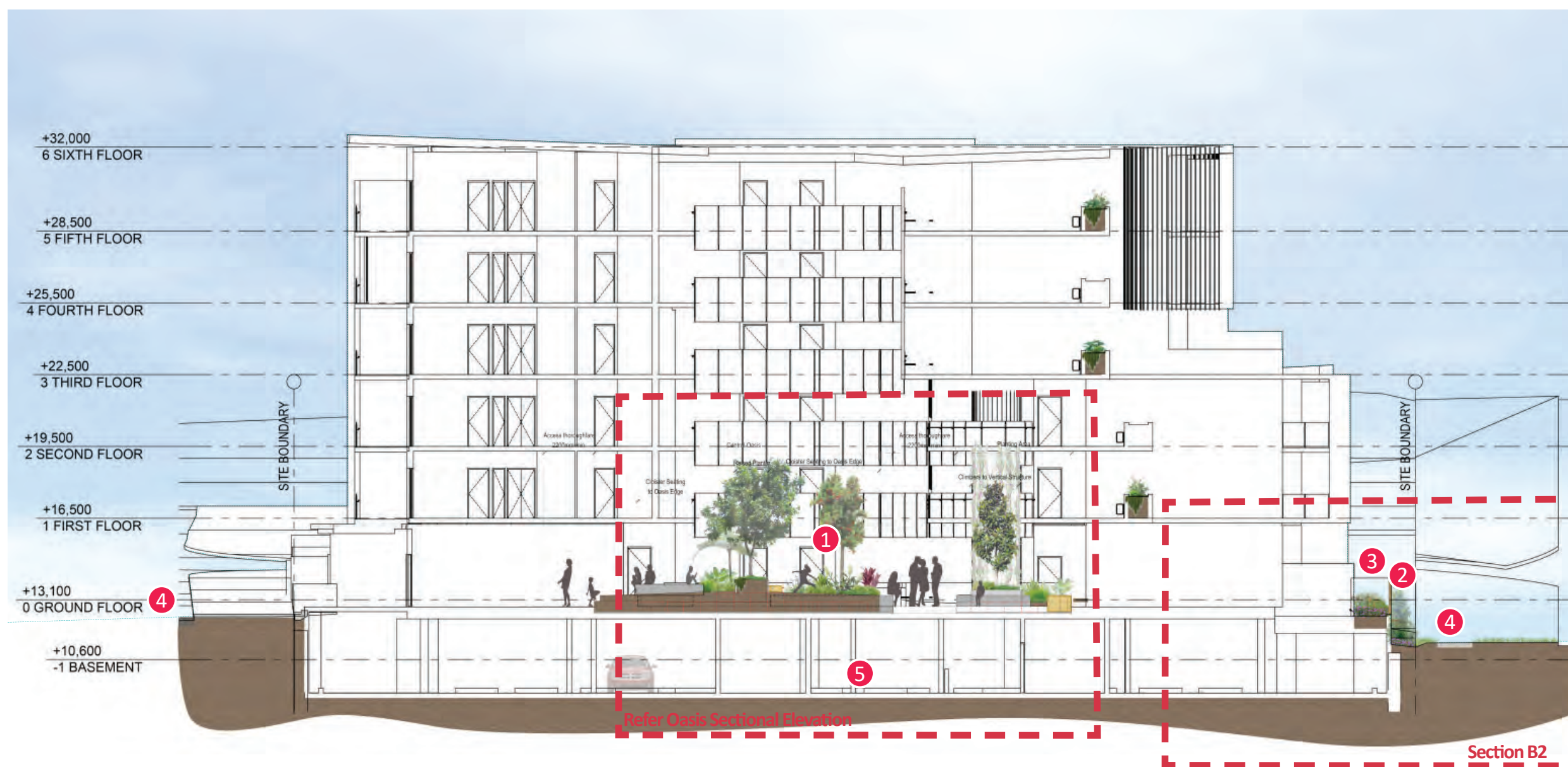


Typical Section A2



## LEGEND

- 1 Central Oasis Garden - Refer p5 & p6
- 2 Boundary Screening - Deep Planting
- 3 Boundary Screening - Podium Planting
- 4 Street
- 5 Underground Carpark





# Planting Species List

PROPOSED PLANTING PALETTE			
Project Name: BHC YERONGA			
Project No: 202219			
Code	Scientific Name	Common Name	POT SIZE
Basement and Ground Level			
<b>Trees</b>			
ACM hem	<i>ACMENA hemilampra</i>	Blush Satin Ash	100l
BAC cit	<i>BACKHOUSIA citriodora</i>	Lemon Myrtle	100l
CYA coo	<i>CYATHEA Cooperi</i>	Tree Fern	100l
HYM fla	<i>HYMENOSPORUM flavum</i>	Native Frangipani	100l
LIV aus	<i>LIVISTONA australis</i>	Cabbage-tree Palm	200l
MAC moo	<i>MACROZAMIA moorei</i>	Cycad Palm	200l
ATT fit	<i>ATTRACTOCARPUS fitzalanii</i>	Brown Gardenia	100l
STE sin	<i>STENOCARPUS sinuatus</i>	The Firewheel Tree	100l
SYZ leu	<i>SYZYGIVM luehmannii</i>	Riberry Lilly Pilly	100l
TRI lau	<i>TRISTANIOPSIS lauruna 'Luscious'</i>	Water Gum	100l
WAT flo	<i>WATERHOUSEA floribunda 'Sweeper'</i>	Weeping Lilly Pilly	100l
XAN chr	<i>XANTHOSTEMON crysanthus</i>	Golden Penda	100l
<b>Shrubs</b>			
ASP nid	<i>ASPLENIUM nidus</i>	Bird's Nest Fern	200mm
ALC imp	<i>ALCANTERIA imperialis 'Rubra'</i>	Bromeliad Cultivar	200mm
ALO bri	<i>ALOCASIA brisbanensis</i>	Native Lily	200mm
ALP cae	<i>ALPINIA caerulea</i>	Purple Native Ginger	200mm
CAL LJ	<i>CALLISTEMON "Little John"</i>	Bottlebrush	200mm
CAR ova	<i>CARISSA ovata 'Desert Star'</i>	Carissa cultivar	200mm
CRA ova	<i>CRASSULA ovata</i>	Money Tree	200mm
COR rub	<i>CORDYLINE rubra</i>	Cordyline	200mm
DEN spe	<i>DENDROBIUM speciosum</i>	King Orchid	200mm
HEL G.T.	<i>HELICONIA "Golden Torch"</i>	Golden Torch	300mm
MEL CT	<i>MELALEUCA linariifolia Claret Tops</i>	Honey Myrtle	200mm
MET L.D	<i>METROSIDEROS "Little Dugald"</i>	Little Dugald	200mm
MON del	<i>MONSTERA deliciosa</i>	Swiss-Cheese Plant	200mm
PHI xan	<i>PHILODENDRON xanadu</i>	Winterbourn	200mm
PIT MM	<i>PITTOSPORUM 'Miss Muffet'</i>	Dwarf Pittosporum	200mm
PLA sup	<i>PLATYCERIUM superbum</i>	Elk Horn	200mm
RHA exc	<i>RHAPIS excelsa</i>	Broadleaf Lady Palm	200mm
STR reg	<i>STRELITZIA reginae</i>	Bird of Paradise	200mm
SYZ CAS	<i>SYZYGIVM Cascade</i>	Weeping Lilly Pilly	200mm
SYZ leu	<i>SYZYGIVM leumannii</i>	Lilly Pilly	200mm
SYZ SAN	<i>SYZYGIVM Straight and Narrow</i>	Lilly Pilly	200mm
ZAM fur	<i>ZAMIA furfuracea</i>	Cardboard Plant	200mm

Groundcovers			
CAR gla	<i>CARPOBROTUS glaucescens</i>	Pigface	140mm
CAS C.I.	<i>CASUARINA Cousin IT</i>	Cousin It	140mm
CIR cap	<i>CIRCULIGO capitulata</i>	Palm Grass	140mm
CIS ant	<i>CISSUS antarctica</i>	Kangaroo Vine	140mm
CIS ED	<i>CISSUS rhombifolia 'Ellen Danica'</i>	Grape Vine	140mm
CLI min	<i>CLIVIA miniata</i>	Kaffir Lily	140mm
DIA bre	<i>DIANELLA brevipedunculata</i>	Blue Flax Lily	140mm
DIC SF	<i>DICHONDRA 'Silver Falls'</i>	Dichondra Cultivar	140mm
FIC GI	<i>FICUS microcarpa Green Island</i>	Green Island Fig	140mm
HYM lit	<i>HYMENOCALLIS littoralis</i>	Beach Spider Lily	140mm
LIR mus	<i>LIRIOPE muscari "Evergreen Giant"</i>	Lirope Isabella	140mm
LOM lon	<i>LOMANDRA longifolia</i>	Spiny-headed Mat Rush	140mm
LOM hys	<i>LOMANDRA hystrix</i>	Mat Rush	140mm
LOM til	<i>LOMANDRA tilga</i>	Mat Rush	140mm
MYO par	<i>MYOPORUM parvifolium</i>	Fine Leaf Myoporum	140mm
SAN tri	<i>SANSEVIERIA trifasciata</i>	Mother-in-law's Tongue	140mm
SEN man	<i>SENECIO mandraliscae</i>	Blue Chalk Sticks	140mm
SPA wal	<i>SPATHIPHYLLUM wallisii</i>	Peace Lily	140mm
VIO hed	<i>VIOLA hederacea</i>	Native Violet	140mm
ZOY ten	<i>ZOYSIA tenuifolia</i>	No-Mow Grass	140mm
Climbers			
CIS ant	<i>CISSUS antarctica</i>	Kangaroo Vine	140mm
CIS ED	<i>CISSUS rhombifolia 'Ellen Danica'</i>	Grape Vine	140mm
EPI aur	<i>EPIPREMNUM aureum</i>	Pothos	140mm
PAN pan	<i>PANDOREA pandorana</i>	Wonga Wonga Vine	140mm
STE sp.	<i>STEPHANOTIS sp.</i>	Madagascar Jasmine	140mm
TRA jas	<i>TRACHELOSPERMUM jasminoides</i>	Star Jasmine	140mm

First - Fifth Floor			
Shrubs and Feature Plants			
CAR des	<i>CARISSA Desert Star</i>	Desert Star	300mm
DOR pal	<i>DORYANTHES palmerii</i>	Palm lilly	300mm
HEL G.T.	<i>HELICONIA "Golden Torch"</i>	Golden Torch	300mm
MET L.D.	<i>METROSIDEROS "Little Dugald"</i>	Little Dugald	300mm
PHI con	<i>PHILODENDRON congo</i>	Rojo Philodendron	300mm
RHA exc	<i>RHAPIS excelsa</i>	Broadleaf Lady Palm	300mm
STR reg	<i>STRELITZIA reginae</i>	Bird of Paradise	300mm
WES fru	<i>WESTRINGIA fruticosa</i>	Native Rosemary	300mm
ZAM fur	<i>ZAMIA furfuracea</i>	Cardboard Plant	300mm
Groundcovers			
CAS C.I.	<i>CASUARINA Cousin IT</i>	Cousin It	140mm
CAR gla	<i>CARPOBROTUS glaucescens</i>	Pig Face	140mm
CIS ED	<i>CISSUS rhombifolia 'Ellen Danica'</i>	Grape Vine	140mm
LOM lon	<i>LOMANDRA longifolia</i>	Spiny-headed mat rush	140mm
LOM hys	<i>LOMANDRA hystrix</i>	Mat Rush	140mm
LOM til	<i>LOMANDRA tilga</i>	Mat Rush	140mm
PHI xan	<i>PHILODENDRON xanadu</i>	Winterbourn	140mm
SEN man	<i>SENECIO mandraliscae</i>	Blue Chalk Sticks	140mm
ZOY ten	<i>ZOYSIA tenuifolia</i>	No-Mow Grass	140mm





# Typical Planting

TREES



*ATRACTOCARPUS fitzalanii*



*DRACAENA draco*



*LIVISTONA australis*



*MACROZAMIA moorei*



*STENOCARPUS sinuatus*



*SYZYGIUM luehmannii*



*TRISTANIOPSIS laurina*



*ARCONTOPHOENIX cunninghamii*

SHRUBS



*XANTHOSTEMON chrysanthus*



*BACKHOUSIA citriodora*



*ALCANTARIA imperialis 'Rubra'*



*ALPINIA nutans*



*ALOCASIA brisbanensis*



*ALPINIA zerumbet*



*CRASSULA grandiflora*



*CARISSA ovata*

SHRUBS



*CORDYLINAE fruticosa 'Rubra'*



*DORYANTHES palmeri*



*HELICONIA 'Golden Torch'*



*METROSIDEROS sp. 'Little Dugald'*



*MONSTERA deliciosa*



*PHILODENDRON congo*



*PITTOSPORUM 'miss muffed'*



*RHAPIS excelsa*



*STRELITZIA nicolai*



*STRELITZIA reginae*



*ZAMIA furfuracea*



*PLATYNERIUM bifurcatum*



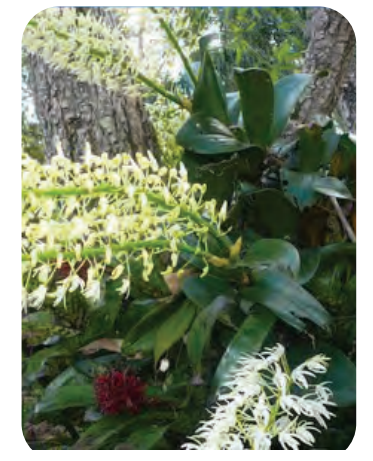
*PLATYNERIUM superbum*



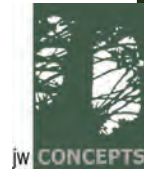
*CYATHEA cooperi*



*ASPENIUM nidus*



*DENDROBIUM speciosa*





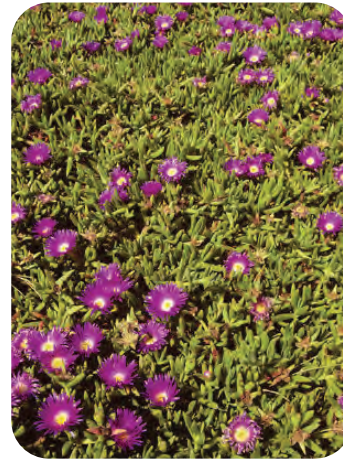
GROUNDCOVERS



*ASPIDISTRA elatior*



*CASUARINA glauca*



*CARPOBROTUS glaucescens*



*CIRCULIGO capitulata*



*CISSUS antartica*



*CISSUS rhombifolia ellen danica*



*CLIVIA miniata*



*EPIPRENUM aureum*



*EUPHORBIA tirucalli*



*HYMENOCALLIS littoralis*



*KALANCHOE luciae*



*LIRIOPE muscari*



*LOMANDRA longifolia*



*LOMANDRA hystrix*



*LOMANDRA tilga*



*NEOMARICA northiana*



*PHILODENRON xanadu*



*RHOEO discolor 'Hawaiian Dwarf'*



*SANSEVIERIA trifasciata*



*SANSEVIERIA cylindrica*



*SENECIO mandraliscae*



*SPATHIPHYLLUM wallisii*



*VIOLA hederacea*



*ZOYSIA tenuifolia*

CLIMBERS



*CISSUS antartica*



*CISSUS rhombifolia Ellen Danica*



*FICUS pumila*



*STEPHANOTIS sp.*



*PANDOREA pandorana*



*TRACHELOSPERMUM jasminoides*