

LANDSCAPE CONCEPT PLAN

- 1** PROPOSED STREET TREES
Street tree in accordance with Council's Street Tree Planting Guidelines;
Refer Proposed Planting Schedule (ie: *Buckinghamia celsissima*)
- 2** LARGE FEATURE SHADE/ SCREEN TREE
Large canopied rounded tree species to provide shade, visual and climatic amenity, and landscape softening of the property;
Refer Proposed Planting Schedule (ie: *Cupaniopsis anacardioides*)
- 3** MEDIUM CARPARK TREES
Medium sized trees that assist in the landscape presentation of neighbouring property; provides visual and climatic amenity, as well as primary screening; Refer Proposed Planting Schedule (ie: *Tristanopsis laurina* Luscious)
- 4** SHRUBS AND GROUNDCOVERS
Mass planting to assist in building presentation to the streetscape and to provide visual amenity;
Refer Proposed Planting Schedule

LEGEND

--- PROPOSED GARDEN EDGE
To future detail

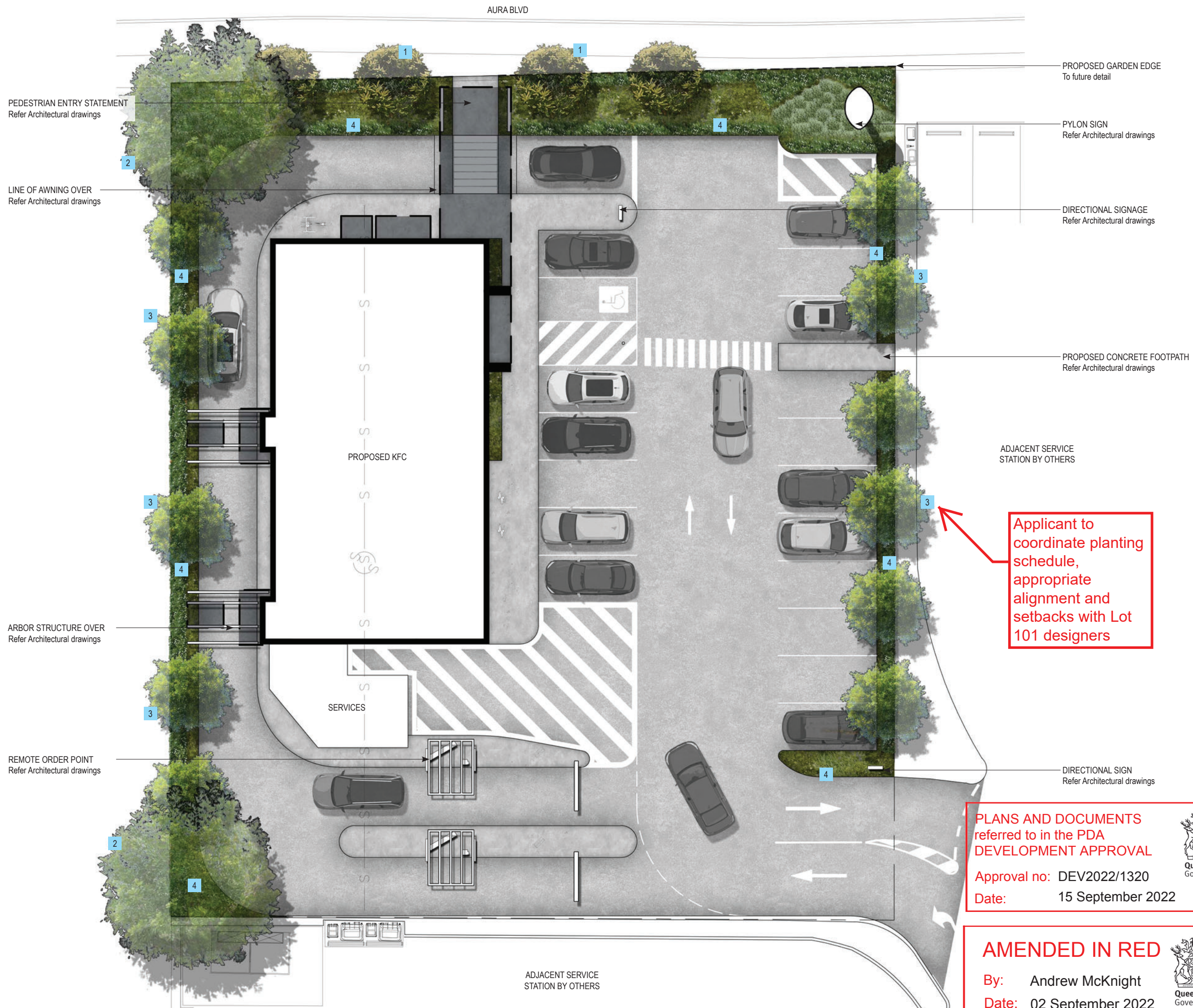
ISSUE	DATE	REASON
E	05/08/22	REMOVED TREE
D	04/08/22	REVISIONS
C	07/04/22	REVISIONS
B	22/03/22	FOR SUBMISSION TO SCC
A	08/03/22	DRAFT FOR REVIEW

1:200@A3	0 1 2 3 4 5 10m	
JOB NUMBER 22.058	SHEET NO. 1	ISSUE E
		DRAWN BY AG/ JD

THESE DRAWINGS ARE AT A PRELIMINARY STAGE AND NOT A FULLY DETAILED AND CHECKED DESIGN READY FOR CONSTRUCTION. THIS DRAWING HAS BEEN PREPARED WITH ALL CARE FROM BASE INFORMATION AVAILABLE AT THE TIME OF PREPARATION. AGLA CAN NOT BE LIABLE OR RESPONSIBLE FOR ANY LIABILITIES, CLAIM OR LOSSES ARISING FROM RELIANCE FOR CONSTRUCTION.

PLEASE NOTE THESE DRAWINGS (E.G. VISUAL REPRESENTATIONS, ILLUSTRATIONS, PHOTOGRAPHS, ART RENDERINGS, AND OTHER GRAPHIC REPRESENTATIONS AND REFERENCES) ARE AN ARTIST'S IMPRESSION FOR ILLUSTRATION PURPOSES ONLY. THEY CANNOT BE REGARDED AS REPRESENTATION OF FACT OR THE INTENDED FINAL PRODUCT. CHANGES MAY BE MADE DURING THE FURTHER PLANNING OR DEVELOPMENT STAGES OF THE PROJECT AND DIMENSIONS, FITTINGS, FINISHES, ONGOING COSTS AND SPECIFICATIONS AND REPRESENTATIONS ETC. ARE SUBJECT TO CHANGE WITHOUT NOTICE.

PLANT AND TREE SIZES ARE INDICATIVE TO SUPPORT THE GRAPHIC NATURE OF THE REPRESENTATION AND ARE TYPICALLY SHOWN AT FULL MATURITY RATHER THAN INSTALLATION SIZE. FINAL PLANT AND TREE DENSITIES/ SIZES ARE DEPENDENT ON A RANGE OF FACTORS CONFIRMED DURING THE DETAILED DESIGN AND CONSTRUCTION PHASE.



PLANS AND DOCUMENTS
referred to in the PDA
DEVELOPMENT APPROVAL

Approval no: DEV2022/1320

Date: 15 September 2022



AMENDED IN RED

By: Andrew McKnight

Date: 02 September 2022



NORTH ELEVATION (FROM ADJACENT SERVICE STATION)

SCALE 1:200 @ A3



LANDSCAPE ELEVATIONS

- 1

PROPOSED STREET TREES
Street tree in accordance with Council's Street Tree Planting Guidelines;
Refer Proposed Planting Schedule
(ie: *Buckinghamia celsissima*)
- 2

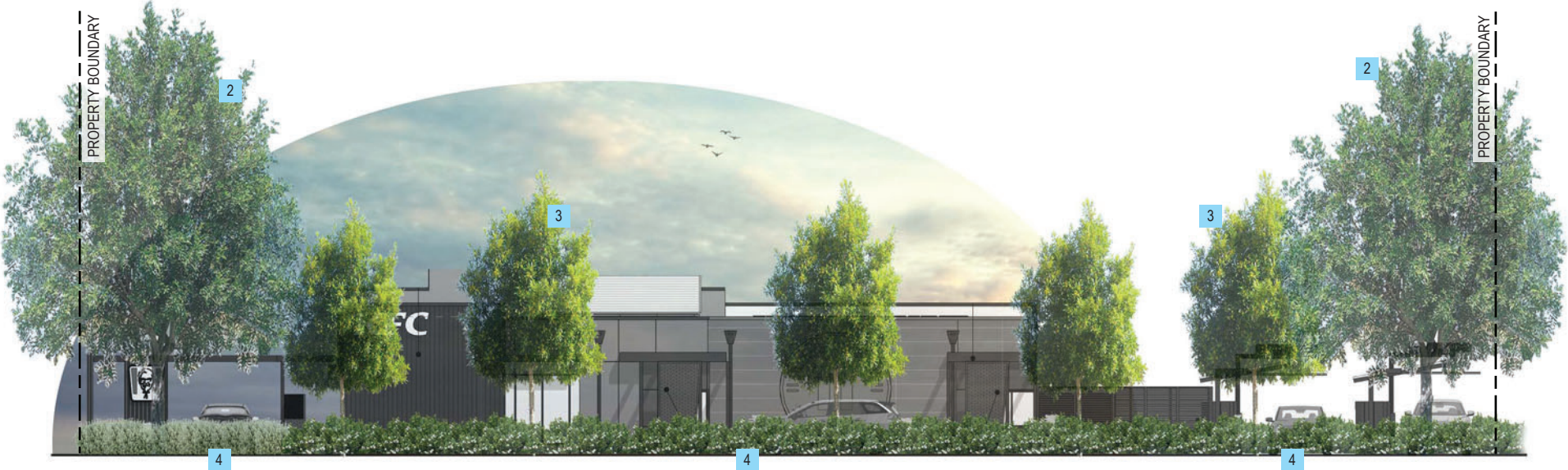
LARGE FEATURE SHADE/ SCREEN TREE
Large canopied rounded tree species to provide shade, visual and climatic amenity, and landscape softening of the property;
Refer Proposed Planting Schedule
(ie: *Cupaniopsis anacardiodes*)
- 3

MEDIUM CARPARK TREES
Medium sized trees that assist in the landscape presentation of neighbouring property; provides visual and climatic amenity, as well as primary screening; Refer Proposed Planting Schedule
(ie: *Tristaniopsis laurina* Luscious)
- 4

SHRUBS AND GROUNDCOVERS
Mass planting to assist in building presentation to the streetscape and to provide visual amenity;
Refer Proposed Planting Schedule

SOUTH ELEVATION (FROM NEIGHBOURING PROPERTY)

SCALE 1:200 @ A3



E	05/08/22	REMOVED TREE
D	04/08/22	REVISIONS
C	07/04/22	REVISIONS
B	22/03/22	FOR SUBMISSION TO SCC
A	08/03/22	DRAFT FOR REVIEW
ISSUE	DATE	REASON

1:200@A3

0 1 2 3 4 5 10m

JOB NUMBER	SHEET NO.	ISSUE	DRAWN BY
22.058	2	E	AG/ JD

PLANS AND DOCUMENTS
referred to in the PDA
DEVELOPMENT APPROVAL

Approval no: DEV2022/1320
Date: 15 September 2022



THESE DRAWINGS ARE AT A PRELIMINARY STAGE AND NOT A FULLY DETAILED AND CHECKED DESIGN READY FOR CONSTRUCTION. THIS DRAWING HAS BEEN PREPARED WITH ALL CARE FROM BASE INFORMATION AVAILABLE AT THE TIME OF PREPARATION. AGLA CAN NOT BE LIABLE OR RESPONSIBLE FOR ANY LIABILITIES, CLAIM OR LOSSES ARISING FROM RELIANCE FOR CONSTRUCTION.

PLEASE NOTE THESE DRAWINGS (E.G. VISUAL REPRESENTATIONS, ILLUSTRATIONS, PHOTOGRAPHS, ART RENDERINGS, AND OTHER GRAPHIC REPRESENTATIONS AND REFERENCES) ARE AN ARTIST'S IMPRESSION FOR ILLUSTRATION PURPOSES ONLY. THEY CANNOT BE REGARDED AS REPRESENTATION OF FACT OR THE INTENDED FINAL PRODUCT. CHANGES MAY BE MADE DURING THE FURTHER PLANNING OR DEVELOPMENT STAGES OF THE PROJECT AND DIMENSIONS, FITTINGS, FINISHES, ONGOING COSTS AND SPECIFICATIONS AND REPRESENTATIONS ETC. ARE SUBJECT TO CHANGE WITHOUT NOTICE.

PLANT AND TREE SIZES ARE INDICATIVE TO SUPPORT THE GRAPHIC NATURE OF THE REPRESENTATION AND ARE TYPICALLY SHOWN AT FULL MATURITY RATHER THAN INSTALLATION SIZE. FINAL PLANT AND TREE DENSITIES/ SIZES ARE DEPENDENT ON A RANGE OF FACTORS CONFIRMED DURING THE DETAILED DESIGN AND CONSTRUCTION PHASE.

EAST ELEVATION (FROM ADJACENT SERVICE STATION)

SCALE 1:200 @ A3



LANDSCAPE ELEVATIONS

- 1

PROPOSED STREET TREES
Street tree in accordance with Council's Street Tree Planting Guidelines;
Refer Proposed Planting Schedule
(ie: *Buckinghamia celsissima*)
- 2

LARGE FEATURE SHADE/ SCREEN TREE
Large canopied rounded tree species to provide shade, visual and climatic amenity, and landscape softening of the property;
Refer Proposed Planting Schedule
(ie: *Cupaniopsis anacardiodes*)
- 3

MEDIUM CARPARK TREES
Medium sized trees that assist in the landscape presentation of neighbouring property; provides visual and climatic amenity, as well as primary screening; Refer Proposed Planting Schedule
(ie: *Tristaniopsis laurina* Luscious)
- 4

SHRUBS AND GROUNDCOVERS
Mass planting to assist in building presentation to the streetscape and to provide visual amenity;
Refer Proposed Planting Schedule

WEST ELEVATION (FROM AURA BLVD)

SCALE 1:200 @ A3



E	05/08/22	REMOVED TREE
D	04/08/22	REVISIONS
C	07/04/22	REVISIONS
B	22/03/22	FOR SUBMISSION TO SCC
A	08/03/22	DRAFT FOR REVIEW
ISSUE	DATE	REASON

1:200@A3

01234510m

JOB NUMBER	SHEET NO.	ISSUE	DRAWN BY
22.058	3	E	AG/ JD

PLANS AND DOCUMENTS
referred to in the PDA
DEVELOPMENT APPROVAL

Approval no: DEV2022/1320
Date: 15 September 2022



Queensland
Government

THESE DRAWINGS ARE AT A PRELIMINARY STAGE AND NOT A FULLY DETAILED AND CHECKED DESIGN READY FOR CONSTRUCTION. THIS DRAWING HAS BEEN PREPARED WITH ALL CARE FROM BASE INFORMATION AVAILABLE AT THE TIME OF PREPARATION. AGLA CAN NOT BE LIABLE OR RESPONSIBLE FOR ANY LIABILITIES, CLAIM OR LOSSES ARISING FROM RELIANCE FOR CONSTRUCTION.

PLEASE NOTE THESE DRAWINGS (E.G. VISUAL REPRESENTATIONS, ILLUSTRATIONS, PHOTOGRAPHS, ART RENDERINGS, AND OTHER GRAPHIC REPRESENTATIONS AND REFERENCES) ARE AN ARTIST'S IMPRESSION FOR ILLUSTRATION PURPOSES ONLY. THEY CANNOT BE REGARDED AS REPRESENTATION OF FACT OR THE INTENDED FINAL PRODUCT. CHANGES MAY BE MADE DURING THE FURTHER PLANNING OR DEVELOPMENT STAGES OF THE PROJECT AND DIMENSIONS, FITTINGS, FINISHES, ONGOING COSTS AND SPECIFICATIONS AND REPRESENTATIONS ETC. ARE SUBJECT TO CHANGE WITHOUT NOTICE.

PLANT AND TREE SIZES ARE INDICATIVE TO SUPPORT THE GRAPHIC NATURE OF THE REPRESENTATION AND ARE TYPICALLY SHOWN AT FULL MATURITY RATHER THAN INSTALLATION SIZE. FINAL PLANT AND TREE DENSITIES/ SIZES ARE DEPENDENT ON A RANGE OF FACTORS CONFIRMED DURING THE DETAILED DESIGN AND CONSTRUCTION PHASE.

PROPOSED PLANTING
SCHEDULE



CODE	SPECIES	COMMON NAME	SIZE**	SPACING	HEIGHT(m)	WIDTH(m)
1 PROPOSED STREET TREE						
1.1	Buckinghamia celssisima	Ivory Curl	100L	as shown	8	4
2 PROPOSED LARGE FEATURE SHADE/ SCREEN TREE						
2.1	Cupaniopsis anacardioides	Tuckeroo	100L	as shown	15	10
3 PROPOSED MEDIUM CARPARK TREES						
3.1	Elaeocarpus reticulatus Prima Donna	Blueberry Ash	100L	as shown	8-10	3-4
3.2	Tristaniopsis laurina Luscious	Water gum	100L	as shown	10	5

**PLANT CONTAINER SIZE:

100L 100 Litre container stock min Min. height at time of planting: 2.4m

The spacing of plants shown on plan have been derived as a compromise between growth rate, anticipated size, and the ability to provide a good vegetative cover within a reasonable space of time.

E	05/08/22	REMOVED TREE
D	04/08/22	REVISIONS
C	07/04/22	REVISIONS
B	22/03/22	FOR SUBMISSION TO SCC
A	08/03/22	DRAFT FOR REVIEW
ISSUE	DATE	REASON

JOB NUMBER	SHEET NO.	ISSUE	DRAWN BY
22.058	4	E	AG/ JD

PLANS AND DOCUMENTS
referred to in the PDA
DEVELOPMENT APPROVAL

Approval no: DEV2022/1320
Date: 15 September 2022



THESE DRAWINGS ARE AT A PRELIMINARY STAGE AND NOT A FULLY DETAILED AND CHECKED DESIGN READY FOR CONSTRUCTION. THIS DRAWING HAS BEEN PREPARED WITH ALL CARE FROM BASE INFORMATION AVAILABLE AT THE TIME OF PREPARATION. AGLA CAN NOT BE LIABLE OR RESPONSIBLE FOR ANY LIABILITIES, CLAIM OR LOSSES ARISING FROM RELIANCE FOR CONSTRUCTION.

PLEASE NOTE THESE DRAWINGS (E.G. VISUAL REPRESENTATIONS, ILLUSTRATIONS, PHOTOGRAPHS, ART RENDERINGS, AND OTHER GRAPHIC REPRESENTATIONS AND REFERENCES) ARE AN ARTIST'S IMPRESSION FOR ILLUSTRATION PURPOSES ONLY. THEY CANNOT BE REGARDED AS REPRESENTATION OF FACT OR THE INTENDED FINAL PRODUCT. CHANGES MAY BE MADE DURING THE FURTHER PLANNING OR DEVELOPMENT STAGES OF THE PROJECT AND DIMENSIONS, FITTINGS, FINISHES, ONGOING COSTS AND SPECIFICATIONS AND REPRESENTATIONS ETC. ARE SUBJECT TO CHANGE WITHOUT NOTICE.

PLANT AND TREE SIZES ARE INDICATIVE TO SUPPORT THE GRAPHIC NATURE OF THE REPRESENTATION AND ARE TYPICALLY SHOWN AT FULL MATURITY RATHER THAN INSTALLATION SIZE. FINAL PLANT AND TREE DENSITIES/ SIZES ARE DEPENDENT ON A RANGE OF FACTORS CONFIRMED DURING THE DETAILED DESIGN AND CONSTRUCTION PHASE.

PROPOSED PLANTING
SCHEDULE



CODE	SPECIES	COMMON NAME	SIZE**	SPACING(m)	HEIGHT(m)	WIDTH(m)
4	PROPOSED SHRUBS AND GROUNDCOVERS					
4.1	Babingtonia virgata	Howie's Sweet Midget	140mm	1	0.5-1	0.5-1
4.2	Carissa grandiflora	Desert Star	200mm	0.7	1	1
4.3	Carpobrotus rossii	White Hot	140mm	0.8	0.2-0.4	1
4.4	Casuarina glauca prostrate	Shagpile	140mm	1	0.1-0.2	1 - 1.5
4.5	Melaleuca thymifolia	White Lace	140mm	1	1-1.2	1-2
4.6	Westringia Flat n Fruity	Prostrate Native Rosemary	140mm	1	0.3	2
4.7	Westringia Zena	Dwarf Rosemary	140mm	0.9	1	1

**PLANT CONTAINER SIZE:

200mm	200mm dia minimum pot size
140mm	140mm dia minimum pot size

The spacing of plants shown on plan have been derived as a compromise between growth rate, anticipated size, and the ability to provide a good vegetative cover within a reasonable space of time.

E	05/08/22	REMOVED TREE
D	04/08/22	REVISIONS
C	07/04/22	REVISIONS
B	22/03/22	FOR SUBMISSION TO SCC
A	08/03/22	DRAFT FOR REVIEW
ISSUE	DATE	REASON

JOB NUMBER	SHEET NO.	ISSUE	DRAWN BY
22.058	5	E	AG/ JD

PLANS AND DOCUMENTS
referred to in the PDA
DEVELOPMENT APPROVAL

Approval no: DEV2022/1320
Date: 15 September 2022



THESE DRAWINGS ARE AT A PRELIMINARY STAGE AND NOT A FULLY DETAILED AND CHECKED DESIGN READY FOR CONSTRUCTION. THIS DRAWING HAS BEEN PREPARED WITH ALL CARE FROM BASE INFORMATION AVAILABLE AT THE TIME OF PREPARATION. AGLA CAN NOT BE LIABLE OR RESPONSIBLE FOR ANY LIABILITIES, CLAIM OR LOSSES ARISING FROM RELIANCE FOR CONSTRUCTION.

PLEASE NOTE THESE DRAWINGS (E.G. VISUAL REPRESENTATIONS, ILLUSTRATIONS, PHOTOGRAPHS, ART RENDERINGS, AND OTHER GRAPHIC REPRESENTATIONS AND REFERENCES) ARE AN ARTIST'S IMPRESSION FOR ILLUSTRATION PURPOSES ONLY. THEY CANNOT BE REGARDED AS REPRESENTATION OF FACT OR THE INTENDED FINAL PRODUCT. CHANGES MAY BE MADE DURING THE FURTHER PLANNING OR DEVELOPMENT STAGES OF THE PROJECT AND DIMENSIONS, FITTINGS, FINISHES, ONGOING COSTS AND SPECIFICATIONS AND REPRESENTATIONS ETC. ARE SUBJECT TO CHANGE WITHOUT NOTICE.

PLANT AND TREE SIZES ARE INDICATIVE TO SUPPORT THE GRAPHIC NATURE OF THE REPRESENTATION AND ARE TYPICALLY SHOWN AT FULL MATURITY RATHER THAN INSTALLATION SIZE. FINAL PLANT AND TREE DENSITIES/ SIZES ARE DEPENDENT ON A RANGE OF FACTORS CONFIRMED DURING THE DETAILED DESIGN AND CONSTRUCTION PHASE.