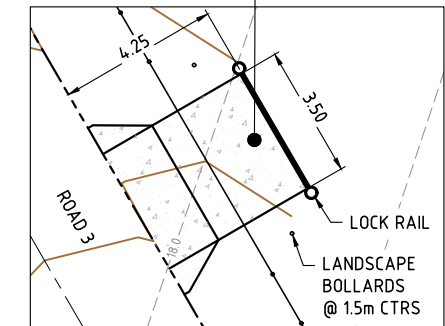


NOTE
REFER PLAN KN DWG 19-173-202 FOR
TYPICAL RETAINING WALL DETAILS

REFER BCC STD DWG BSD-2021 TYPE
A VEHICLE CROSSOVER, BSD-7054
AND BSD-7093 FOR DETAILS



DRIVEWAY DETAIL A
SCALE 1:250

NOT APPROVED

DO NOT SCALE THIS DRAWING
IF IN DOUBT - ASK!



LOCALITY PLAN

REVISIONS

No	Description	Date	By
A	ISSUED FOR APPROVAL	31.05.2021	CDB
B	EDQ RFI RESPONSE	03.09.2021	CDB

Associated Consultants

Client

**ECONOMIC
DEVELOPMENT
QUEENSLAND (EDQ)**

Project

**OXLEY SECONDARY
COLLEGE REDEVELOPMENT
STAGE 2**

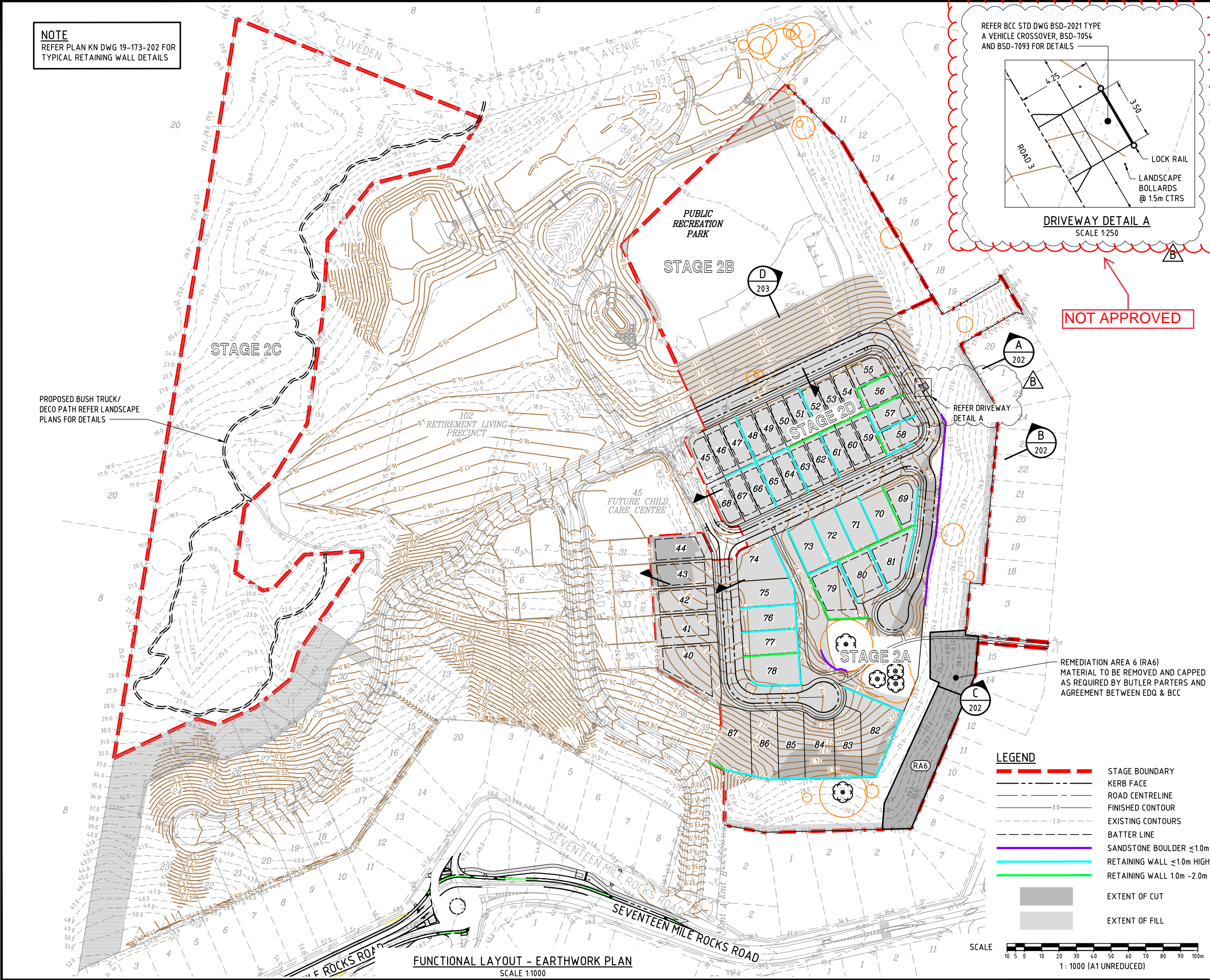
ABN 35 112 53 611
L1, 62 Astor Tce
Spring Hill Q 4000
07 3017 1900
www.kngroup.com.au

Approved

Drawing Title
**FUNCTIONAL LAYOUT
EARTHWORKS PLAN**

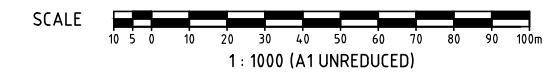
Drawn CDB	Designed JB	Checked GBG	Date MAY 21
Scale AS SHOWN	Drawing No 19-173-201		Sheet 1 of 12
A1		Revision B	

C:\Users\kda\AppData\Local\Temp\kda\Temp\kda\19-173-201-202-EDW.dwg Plotfile by: DS on 27/10/2021 12:50 PM



FUNCTIONAL LAYOUT - EARTHWORK PLAN
SCALE 1:1000

- LEGEND**
- STAGE BOUNDARY
 - KERB FACE
 - ROAD CENTRELINE
 - FINISHED CONTOUR
 - EXISTING CONTOURS
 - BATTER LINE
 - SANDSTONE BOULDER ≤1.0m
 - RETAINING WALL ≤1.0m HIGH
 - RETAINING WALL 1.0m - 2.0m
 - EXTENT OF CUT
 - EXTENT OF FILL



DO NOT SCALE THIS DRAWING
IF IN DOUBT - ASK!

LOCALITY PLAN

REVISIONS

No	Description	Date	By
A	ISSUED FOR APPROVAL	31.05.2021	CDB
B	EDQ RFI RESPONSE	03.09.2021	CDB

Associated Consultants

Client

ECONOMIC DEVELOPMENT QUEENSLAND (EDQ)

Project

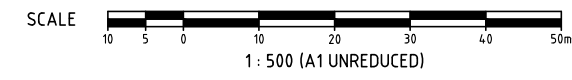
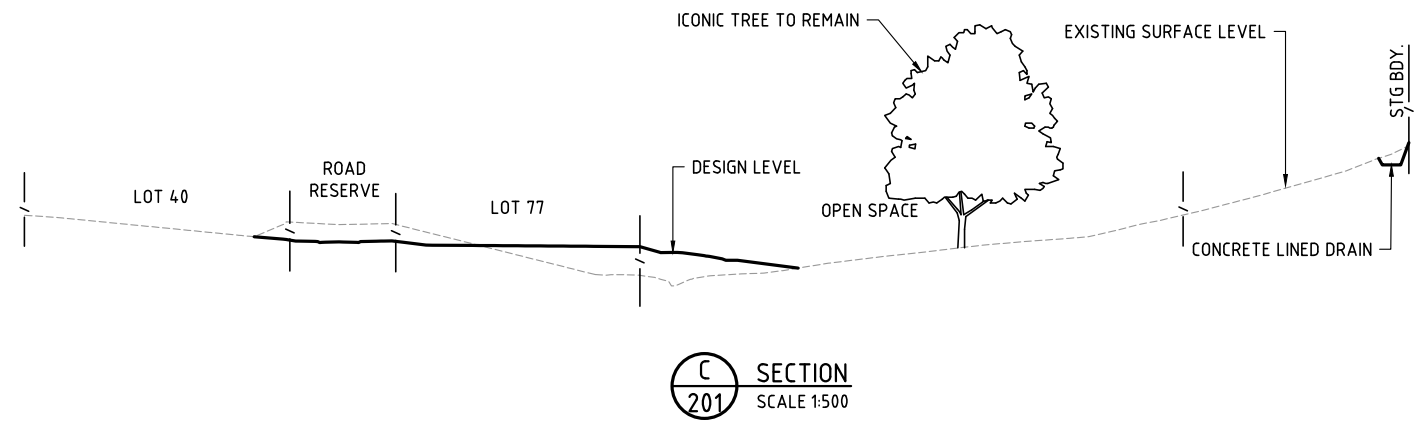
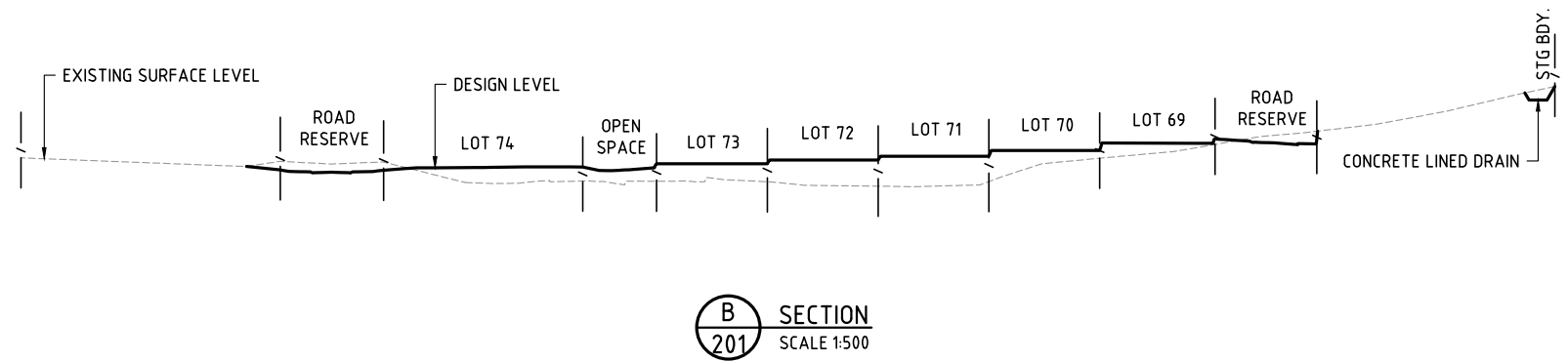
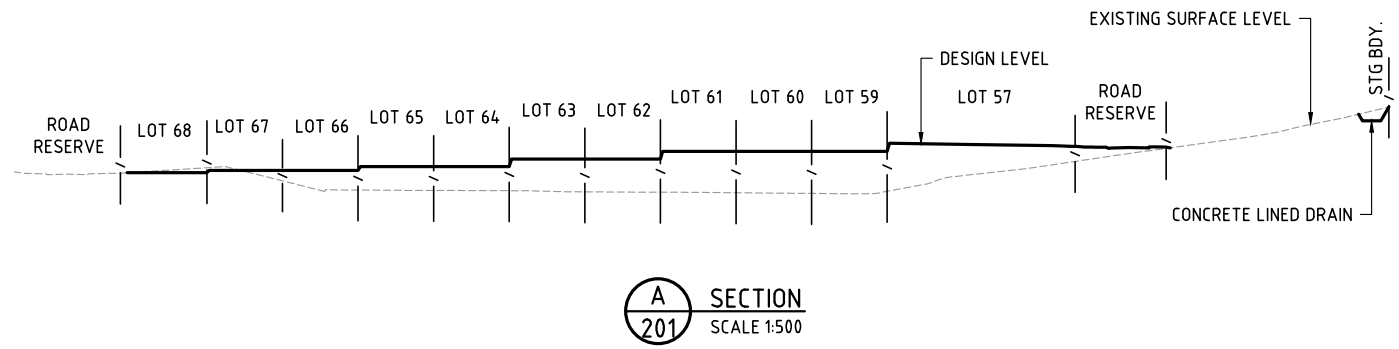
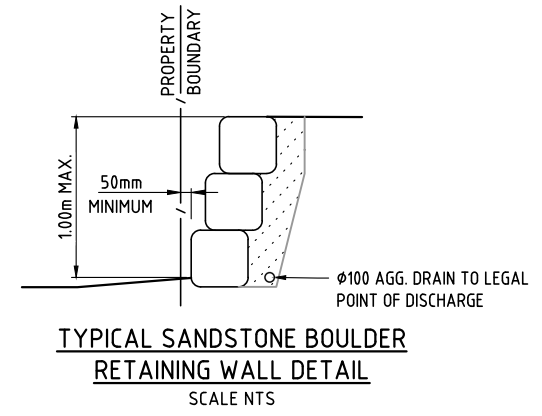
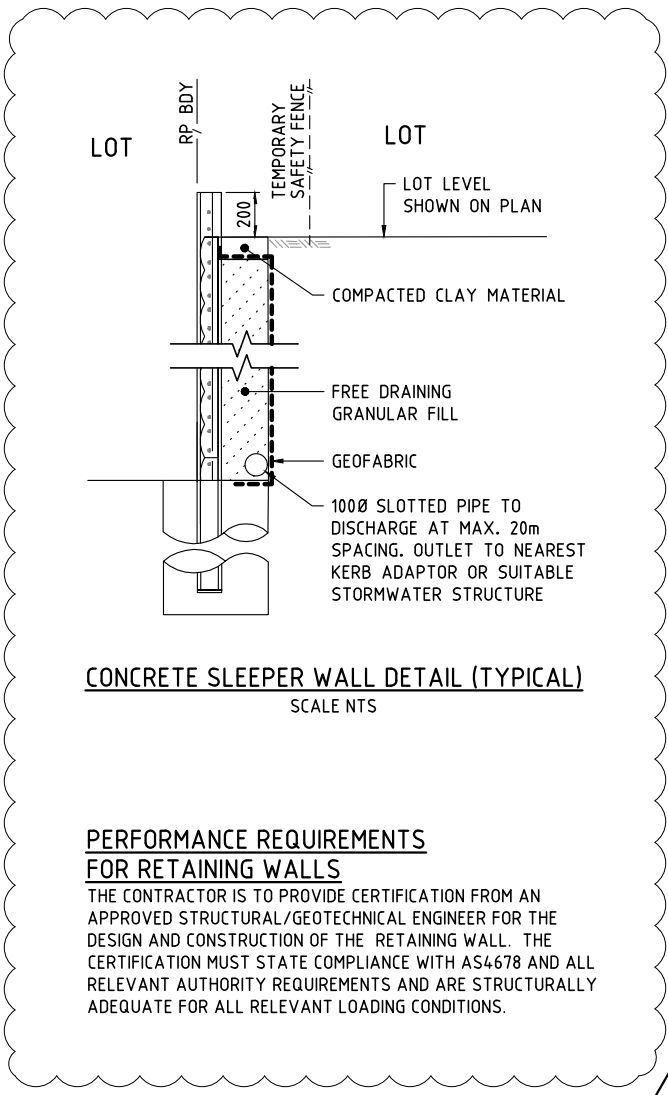
OXLEY SECONDARY COLLEGE REDEVELOPMENT STAGE 2



Approved

Drawing Title
FUNCTIONAL LAYOUT
EARTHWORKS PLAN
SECTIONS - SHEET 1

Drawn CDB	Designed JB	Checked GBG	Date MAY 21
Scale AS SHOWN	Drawing No 19-173-202	Sheet 2 of 12	Revision B



C:\Users\ads\AppData\Local\Temp\AcPublish_870A19-173-202-EDQ.dwg Plotred by: DS on 27/10/2021 12:51 PM

DO NOT SCALE THIS DRAWING
IF IN DOUBT - ASK!

LOCALITY PLAN

REVISIONS

No	Description	Date	By
A	ISSUED FOR APPROVAL	31.05.2021	CDB
B	EDQ RFI RESPONSE	03.09.2021	CDB
C	REVISED DRAINAGE CHANNEL	12.10.2021	CDB
D	REVISED DRAINAGE CHANNEL	27.10.2021	DES

Associated Consultants

Client

ECONOMIC
DEVELOPMENT
QUEENSLAND (EDQ)

Project

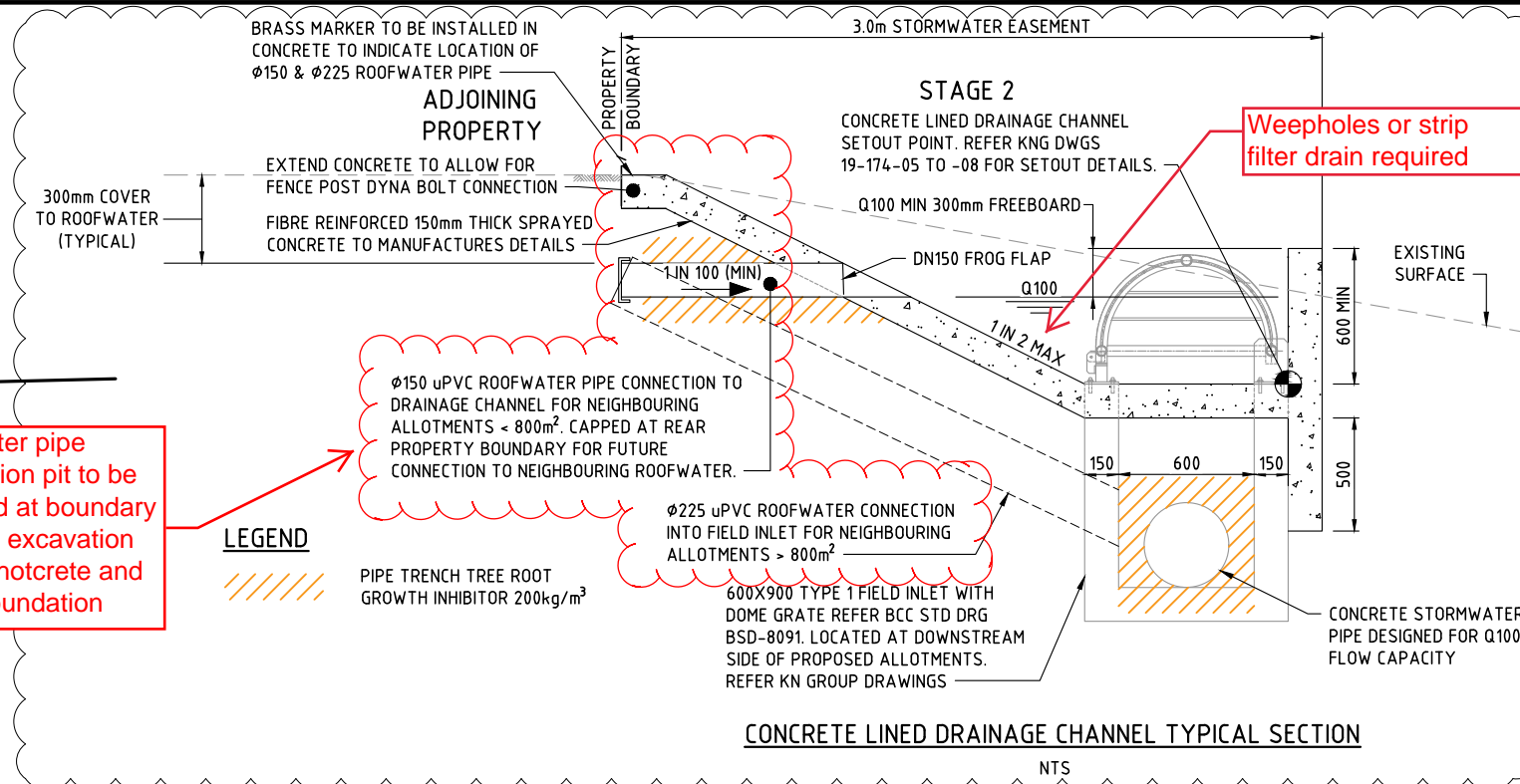
OXLEY SECONDARY
COLLEGE REDEVELOPMENT
STAGE 2

kn group
ABN 35 112 53 611
L1, 62 Astor Tce
Spring Hill Q 4000
07 3017 1900
www.kngroup.com.au

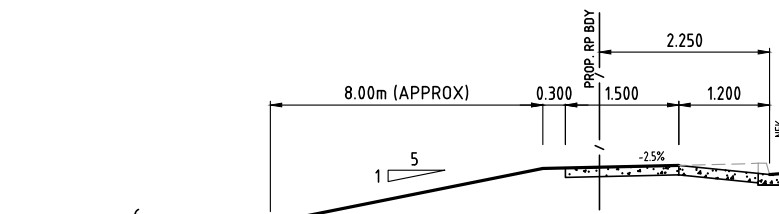
Approved

Drawing Title
FUNCTIONAL LAYOUT
EARTHWORKS PLAN
SECTIONS - SHEET 2

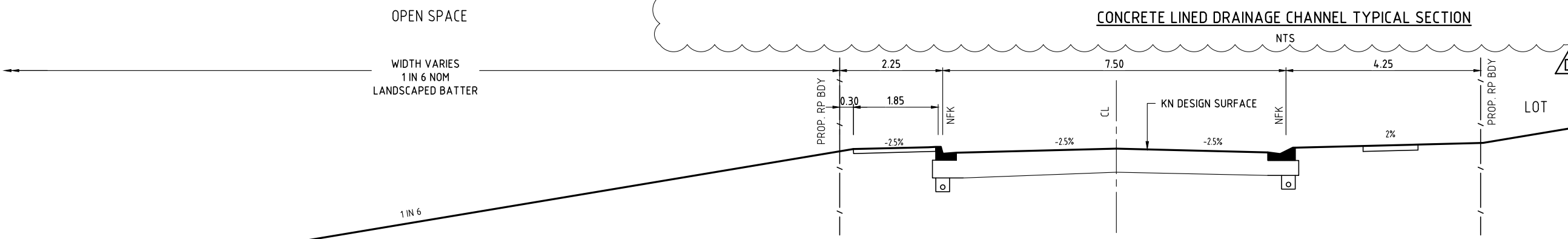
Drawn CDB	Designed JB	Checked GBG	Date MAY 21
Scale AS SHOWN	Sheet 3 of 12		Revision D
A1		Drawing No 19-173-203	



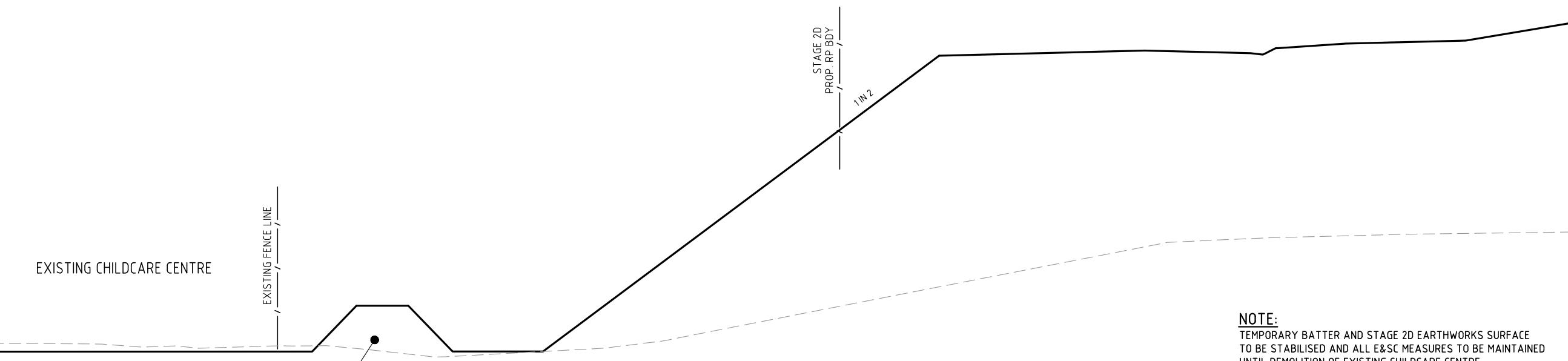
Roofwater pipe connection pit to be provided at boundary to avoid excavation under shotcrete and fence foundation



LOCALISED WIDENING
@ KERB RAMP
SCALE NTS

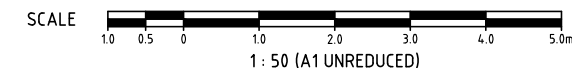


D 201
ULTIMATE EARTHWORKS SECTION
SCALE 1:50



D 201
TEMPORARY EARTHWORKS SECTION - STAGE 2D
SCALE 1:50

NOTE:
TEMPORARY BATTER AND STAGE 2D EARTHWORKS SURFACE TO BE STABILISED AND ALL E&SC MEASURES TO BE MAINTAINED UNTIL DEMOLITION OF EXISTING CHILDCARE CENTRE.



C:\Users\ds\AppData\Local\Temp\AcPublish_870A19-173-203-203-Edwg Plot.dwg Plot.dwg by DS on 27/10/2021 12:28:52 PM

DO NOT SCALE THIS DRAWING
IF IN DOUBT - ASK!



LOCALITY PLAN

REVISIONS

No	Description	Date	By
A	ISSUED FOR APPROVAL	31.05.2021	CDB
B	EDQ RFI RESPONSE	03.09.2021	CDB

Associated Consultants

Client

ECONOMIC
DEVELOPMENT
QUEENSLAND (EDQ)

Project

OXLEY SECONDARY
COLLEGE REDEVELOPMENT
STAGE 2

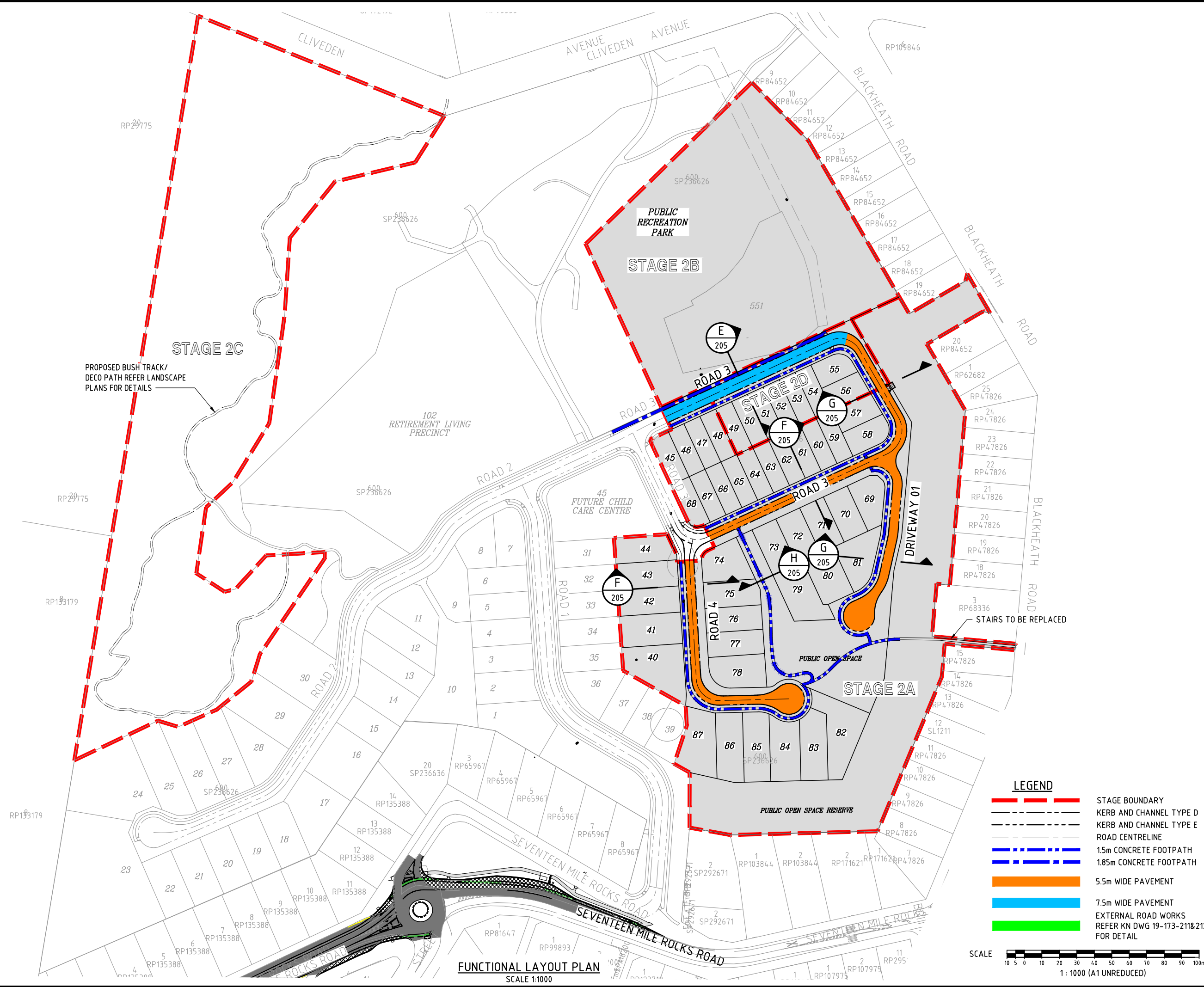


ABN 35 112 53 611
L1, 62 Astor Terrace
Spring Hill Q 4000
07 3017 1900
www.kngroup.com.au

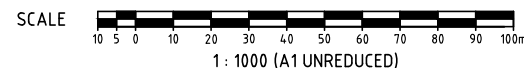
Approved

Drawing Title
FUNCTIONAL LAYOUT
ROAD WORKS

Drawn CDB	Designed JB	Checked GBG	Date MAY 21
Scale AS SHOWN	Drawing No 19-173-204	Sheet 4 of 12	Revision B



- LEGEND**
- STAGE BOUNDARY
 - KERB AND CHANNEL TYPE D
 - KERB AND CHANNEL TYPE E
 - ROAD CENTRELINE
 - 1.5m CONCRETE FOOTPATH
 - 1.85m CONCRETE FOOTPATH
 - 5.5m WIDE PAVEMENT
 - 7.5m WIDE PAVEMENT
 - EXTERNAL ROAD WORKS
REFER KN DWG 19-173-211&212
FOR DETAIL



FUNCTIONAL LAYOUT PLAN
SCALE 1:1000

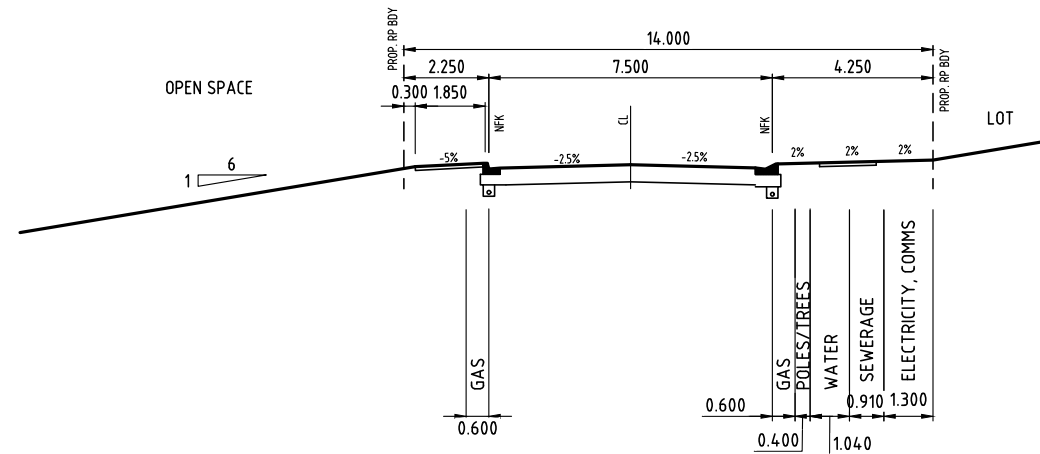
M:\2019\19173 Oxley Secondary College Redevelopment DA\Engineering\Asst\FUNCTIONAL\2021-19-173-204-205-ROAD_LAYOUT.dwg Plotted by DS on 27/10/2021 1:28:57 PM

DO NOT SCALE THIS DRAWING
IF IN DOUBT - ASK!

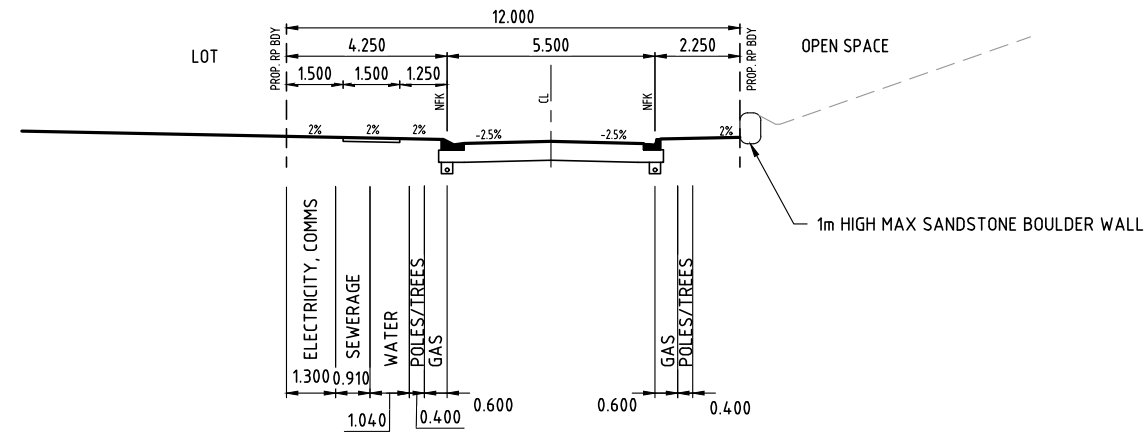
LOCALITY PLAN

REVISIONS

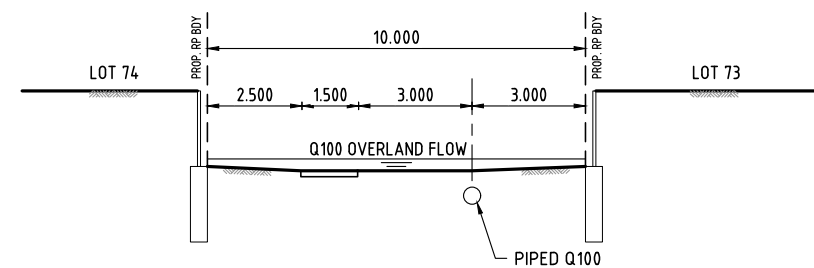
No	Description	Date	By
A	ISSUED FOR APPROVAL	31.05.2021	CDB
B	EDQ RFI RESPONSE	03.09.2021	CDB
C	REVISED TYPICAL SECTION	14.10.2021	CDB



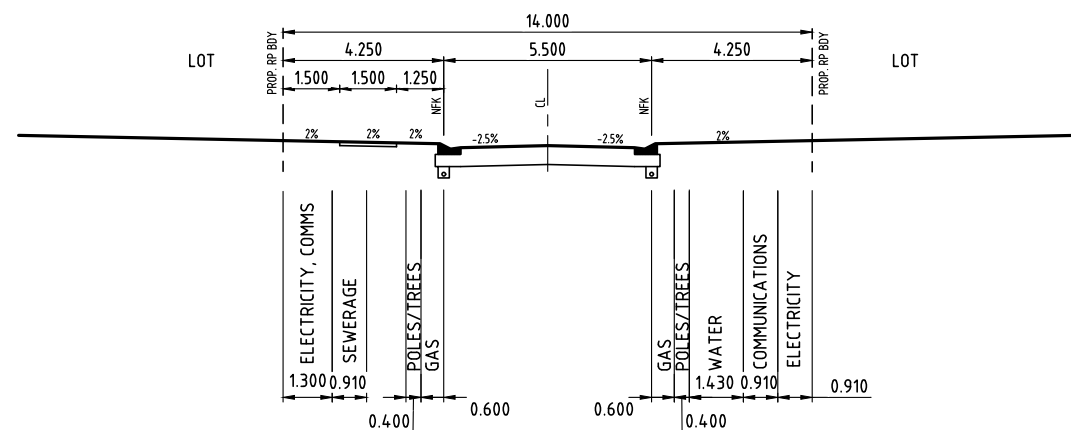
E SECTION
204 SCALE 1:100



G SECTION
204 SCALE 1:100



H SECTION
204 SCALE NTS



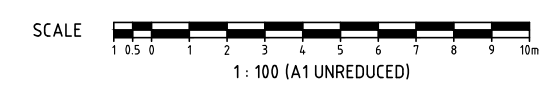
F SECTION
204 SCALE 1:100

TYPICAL GRASS LINED SWALE SECTION
NTS
NB: FOR SURFACE TREATMENT REFER LANDSCAPE ARCHITECTS DRAWINGS

SWALE BETWEEN LOTS 86 & 87

GRADE	= 1 in 4
MANNINGS n	= 0.035
WIDTH (x)	= 0.600m
SLOPE (y)	= 1 in 4
REQUIRED CAPACITY (Q)	= ~0.11m ³ /sec
THEREFORE, DEPTH (dg)	= 0.100m
WITH A VELOCITY	= 1.29m/sec
AND dgV	= 0.129m ² /sec

Diagram labels: 3.00m width, Q100 LEVEL, SLOPE (y), WIDTH (x), (dg), 200mm FREE BOARD.



M:\2019\19173 Oxley Secondary College Redevelopment DA\Engineering\Aerial\FUNCTIONAL\50219-173-204-205-ROAD_LAYOUT.dwg Plotted by DS on 27/10/2021 1:28:58 PM

Associated Consultants

Client

ECONOMIC DEVELOPMENT QUEENSLAND (EDQ)

Project

OXLEY SECONDARY COLLEGE REDEVELOPMENT STAGE 2

ABN 35 112 53 611
L1, 62 Astor Tce
Spring Hill Q 4000
07 3017 1900
www.kngroup.com.au

Approved

Drawing Title
FUNCTIONAL LAYOUT TYPICAL SECTIONS

Drawn	Designed	Checked	Date
CDB	JB	GBG	MAY 21
Scale AS SHOWN			Sheet 5 of 12
A1	19-173-205	Revision	C



LOCALITY PLAN

REVISIONS

No	Description	Date	By
A	ISSUED FOR APPROVAL	31.05.2021	CDB
B	EDQ RFI RESPONSE	25.08.2021	CDB

Associated Consultants

Client
ECONOMIC DEVELOPMENT
QUEENSLAND (EDQ)

Project
OXLEY SECONDARY
COLLEGE REDEVELOPMENT
STAGE 2












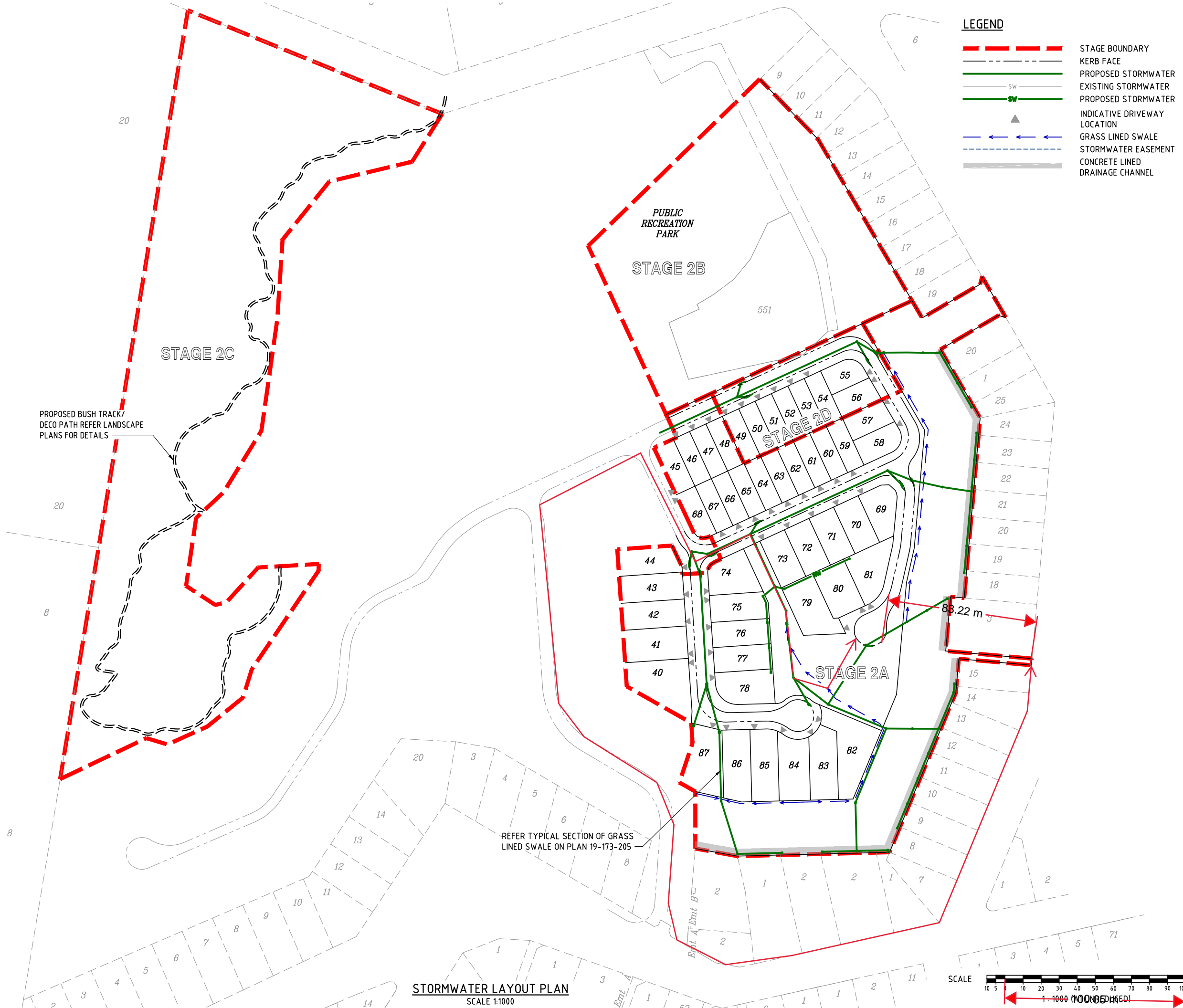
Approved

Drawing Title
FUNCTIONAL LAYOUT
STORMWATER

Drawn CDB	Designed JB	Checked GBG	Date MAY 21
Scale AS SHOWN			Sheet 6 of 12
A1	Drawing No 19-173-206		Revision B

LEGEND

-  STAGE BOUNDARY
-  KERB FACE
-  PROPOSED STORMWATER
-  EXISTING STORMWATER
-  PROPOSED STORMWATER
-  INDICATIVE DRIVEWAY LOCATION
-  GRASS LINED SWALE
-  STORMWATER EASEMENT
-  CONCRETE LINED DRAINAGE CHANNEL



STORMWATER LAYOUT PLAN
SCALE 1:1000

DO NOT SCALE THIS DRAWING
IF IN DOUBT - ASK!



LOCALITY PLAN

REVISIONS

No	Description	Date	By
A	ISSUED FOR APPROVAL	31.05.2021	CDB

Associated Consultants

Client

ECONOMIC DEVELOPMENT QUEENSLAND (EDQ)

Project

OXLEY SECONDARY COLLEGE REDEVELOPMENT STAGE 2



ABN 35 112 53 611
L1, 62 Astor Tce
Spring Hill Q 4000
07 3017 1900
www.kngroup.com.au

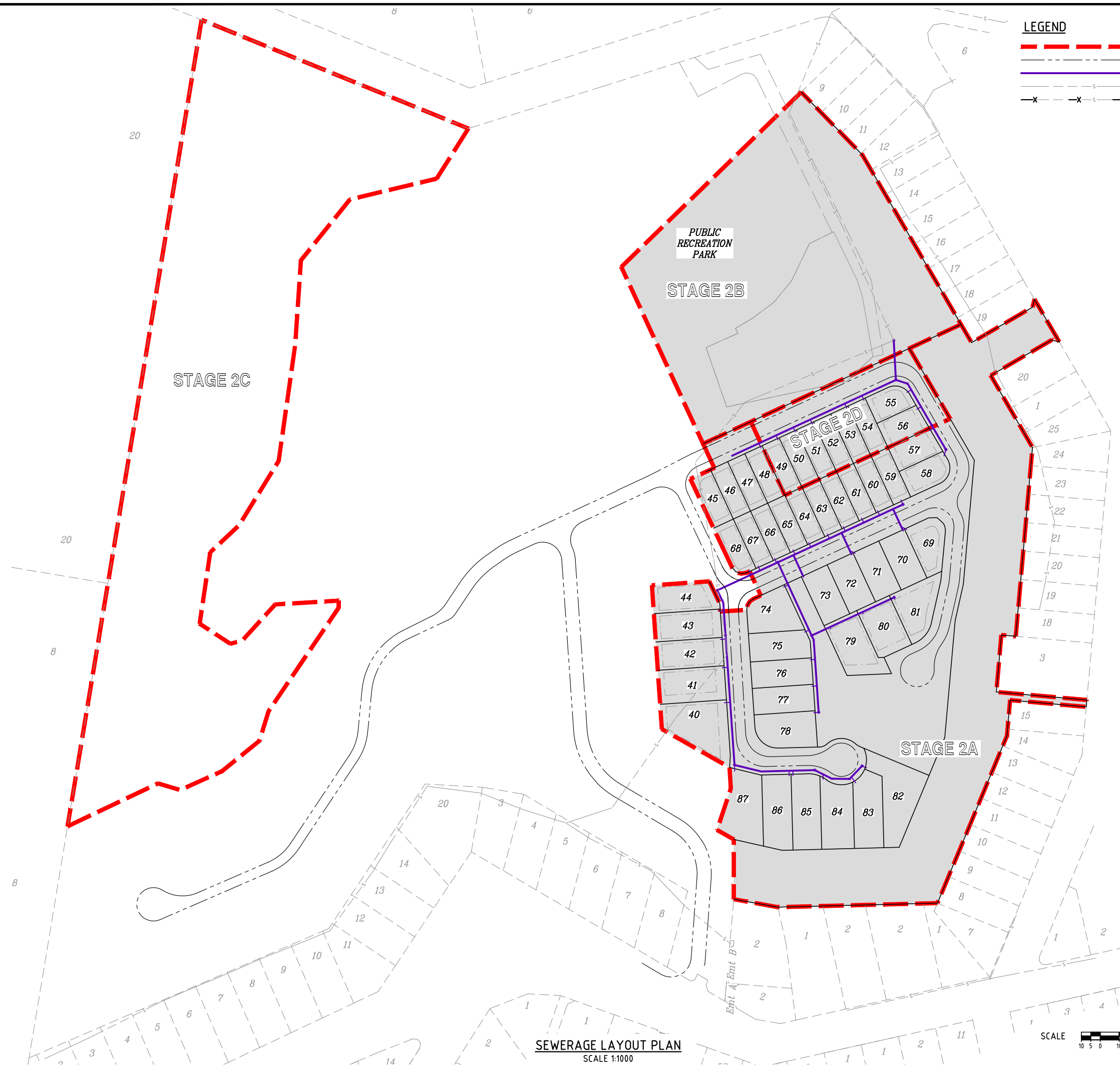
Approved

Drawing Title
**FUNCTIONAL LAYOUT
SEWERAGE LAYOUT PLAN**

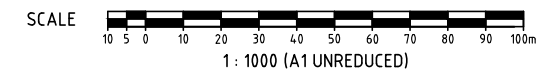
Drawn RW	Designed DJS	Checked GBG	Date MAY 21
Scale AS SHOWN		Sheet 7 of 12	
Drawing No A1		Revision A	

LEGEND

- STAGE BOUNDARY
- KERB FACE
- PROPOSED SEWER RETICULATION
- EXISTING Ø150 SEWER RETICULATION
- SEWER TO BE ABANDONED

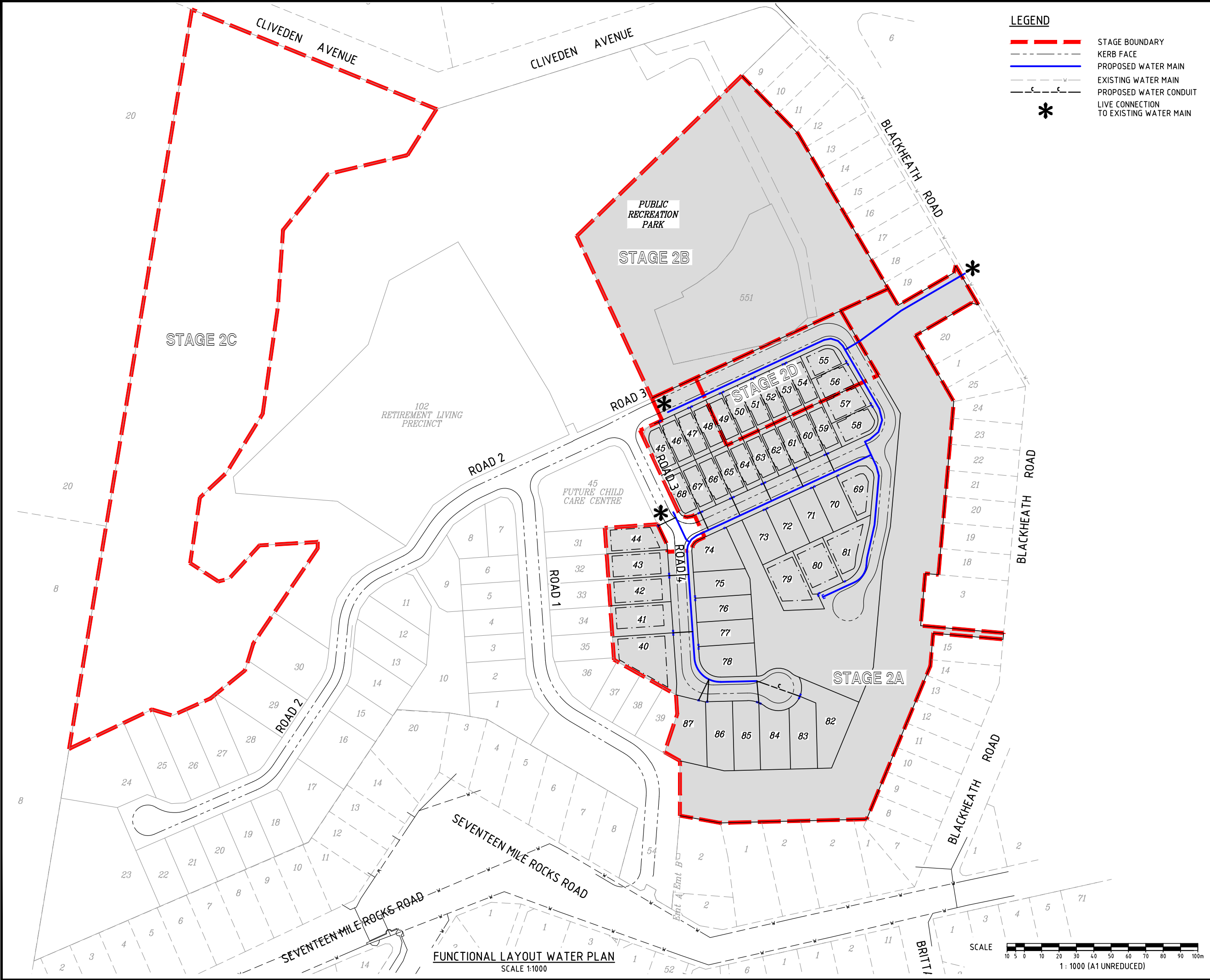


SEWERAGE LAYOUT PLAN
SCALE 1:1000



M:\2019\19173 Oxley Secondary College Redevelopment DA\Engineering\Aval\FUNCTIONAL\50219-173-207_SEWER.dwg Plotted by: DS on 27/10/2021 12:07 PM

M:\2019\19173 Oxley Secondary College Redevelopment DA\Engineering\Asst\FUNCTIONAL\50219-173-208_WATER.dwg Plotted by: DS on 27/10/2021 12:29:11 PM



LEGEND

- STAGE BOUNDARY
- KERB FACE
- PROPOSED WATER MAIN
- EXISTING WATER MAIN
- PROPOSED WATER CONDUIT
- * LIVE CONNECTION TO EXISTING WATER MAIN

DO NOT SCALE THIS DRAWING IF IN DOUBT - ASK!



LOCALITY PLAN

REVISIONS			
No	Description	Date	By
A	ISSUED FOR APPROVAL	31.05.2021	CDB

Associated Consultants

Client
ECONOMIC DEVELOPMENT QUEENSLAND (EDQ)

Project
OXLEY SECONDARY COLLEGE REDEVELOPMENT STAGE 2

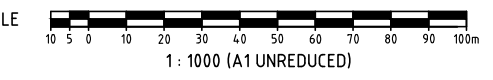


Approved

Drawing Title
FUNCTIONAL LAYOUT WATER RETICULATION

Drawn RW	Designed DJS	Checked GBG	Date MAY 21
Scale AS SHOWN	Drawing No 19-173-208		Sheet 8 of 12
A1	Revision A		

FUNCTIONAL LAYOUT WATER PLAN
SCALE 1:1000



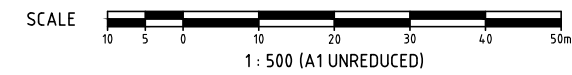
FOR CONTINUATION REFER KNG DWG No 19-173-210



OVERALL SERVICES LAYOUT PLAN
SCALE 1:500

LEGEND

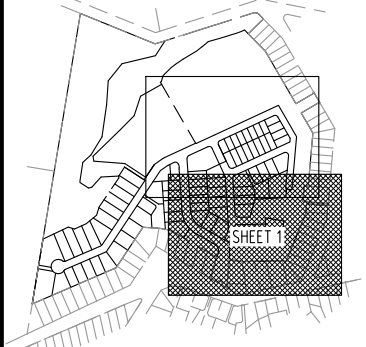
	STAGE BOUNDARY
	KERB AND CHANNEL TYPE D
	KERB AND CHANNEL TYPE E
	PROPOSED STORMWATER
	PROPOSED SEWER RETICULATION
	PROPOSED WATER RETICULATION
	EXISTING STORMWATER
	EXISTING SEWER RETICULATION
	EXISTING WATER RETICULATION
	PROPOSED WATER SERVICE
	PROPOSED WATER CONDUIT
	INDICATIVE DRIVEWAY LOCATION
	GRASS LINED SWALE
	CONCRETE LINED DRAINAGE CHANNEL



DO NOT SCALE THIS DRAWING
IF IN DOUBT - ASK!



LOCALITY PLAN



REVISIONS

No	Description	Date	By
A	ISSUED FOR APPROVAL	31.05.2021	CDB
B	EDQ RFI RESPONSE	25.08.2021	CDB

Associated Consultants

Client

ECONOMIC DEVELOPMENT QUEENSLAND (EDQ)

Project

OXLEY SECONDARY COLLEGE REDEVELOPMENT STAGE 2

kngroup
ABN 35 112 53 611
L1, 62 Astor Tce
Spring Hill Q 4000
07 3017 1900
www.kngroup.com.au

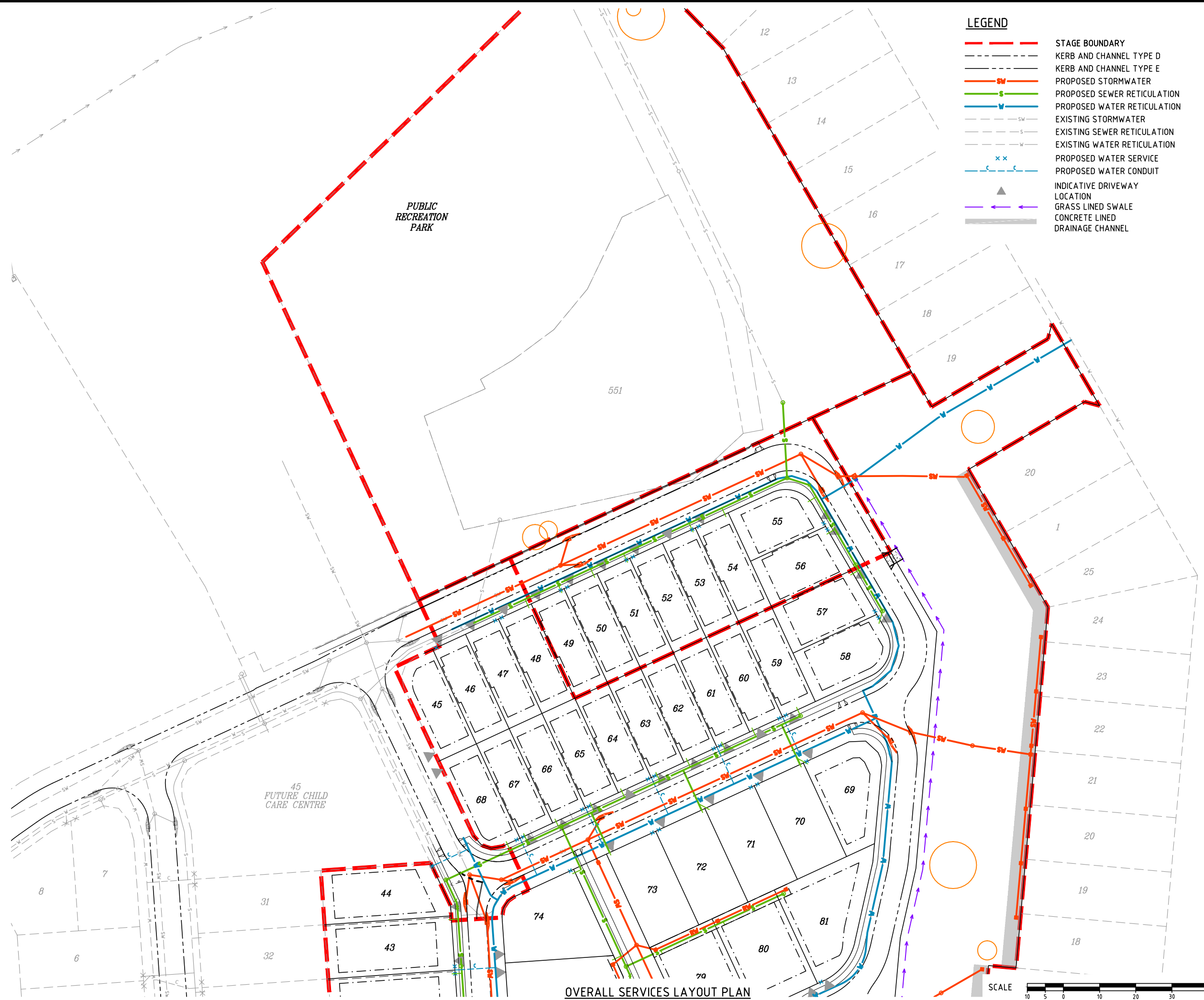
Approved

Drawing Title
FUNCTIONAL LAYOUT OVERALL SERVICES SHEET 1

Drawn CDB	Designed JB	Checked GBG	Date MAY 21
Scale AS SHOWN			Sheet 9 of 12
A1	Drawing No 19-173-209	Revision B	

M:\2019\19173 Oxley Secondary College Redevelopment DA\Engineering\Asst\FUNCTIONAL\19-173-209_210-SERV-ALL.dwg Plotted by: DS on 27/10/2021 1:29:16 PM

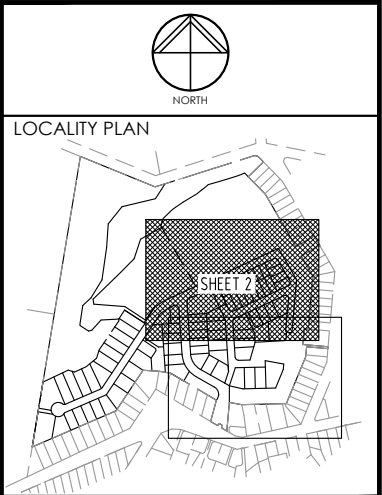
M:\2019\19173 Oxley Secondary College Redevelopment DA\Engineering\Aerial\FUNCTIONAL\50219-173-209_210-SERV-ALL.dwg Plotted by: DS on 27/10/2021 1:29:17 PM



LEGEND

- STAGE BOUNDARY
- KERB AND CHANNEL TYPE D
- KERB AND CHANNEL TYPE E
- PROPOSED STORMWATER
- PROPOSED SEWER RETICULATION
- PROPOSED WATER RETICULATION
- EXISTING STORMWATER
- EXISTING SEWER RETICULATION
- EXISTING WATER RETICULATION
- x x PROPOSED WATER SERVICE
- PROPOSED WATER CONDUIT
- ▲ INDICATIVE DRIVEWAY LOCATION
- GRASS LINED SWALE
- CONCRETE LINED DRAINAGE CHANNEL

DO NOT SCALE THIS DRAWING IF IN DOUBT - ASK!



REVISIONS

No	Description	Date	By
A	ISSUED FOR APPROVAL	31.05.2021	CDB
B	EDQ RFI RESPONSE	25.08.2021	CDB

Associated Consultants

Client

ECONOMIC DEVELOPMENT QUEENSLAND (EDQ)

Project

OXLEY SECONDARY COLLEGE REDEVELOPMENT STAGE 2



ABN 35 112 53 611
L1, 62 Astor Tce
Spring Hill Q 4000
07 3017 1900
www.kngroup.com.au

Approved

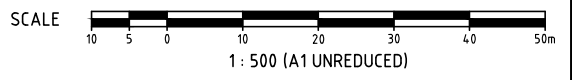
Drawing Title

FUNCTIONAL LAYOUT OVERALL SERVICES SHEET 2

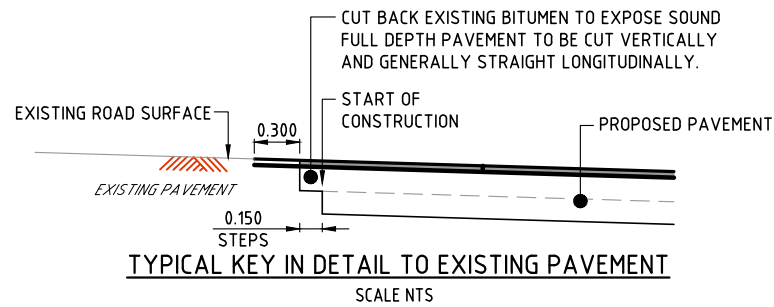
Drawn	Designed	Checked	Date
CDB	JB	GBG	MAY 21
Scale	Drawing No	Sheet	Revision
AS SHOWN	A1	10 of 12	B

FOR CONTINUATION REFER KNG DWG No 19-173-209

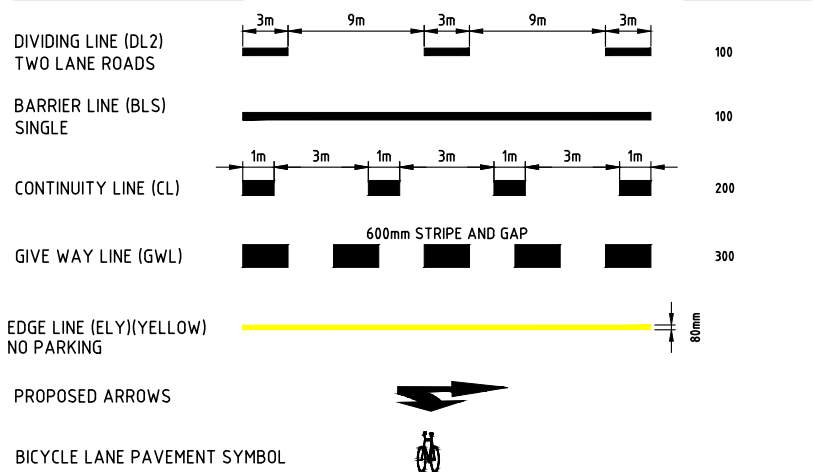
OVERALL SERVICES LAYOUT PLAN
SCALE 1:500



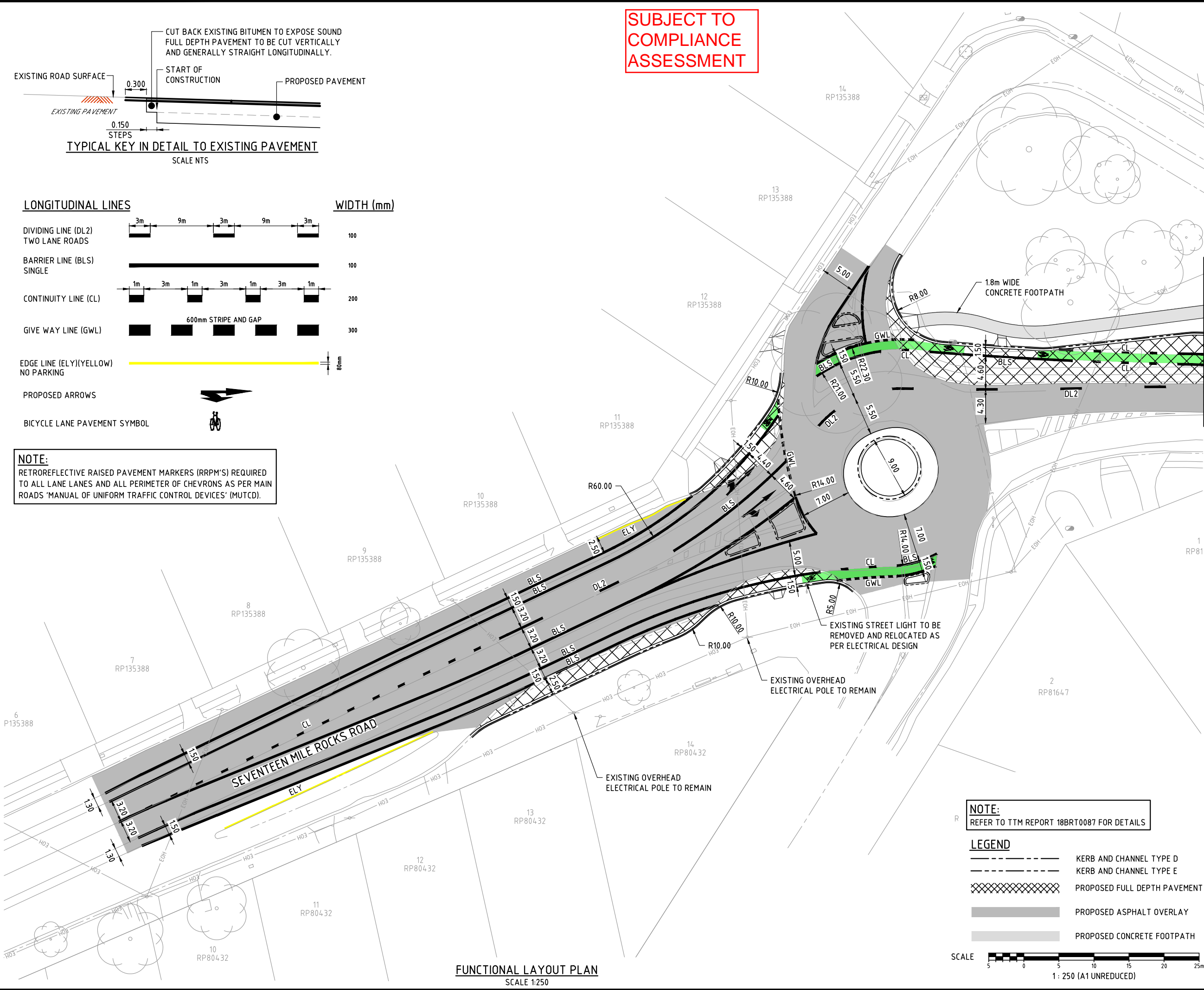
SUBJECT TO COMPLIANCE ASSESSMENT



LONGITUDINAL LINES



NOTE:
RETROREFLECTIVE RAISED PAVEMENT MARKERS (RRPM'S) REQUIRED TO ALL LANE LINES AND ALL PERIMETER OF CHEVRONS AS PER MAIN ROADS 'MANUAL OF UNIFORM TRAFFIC CONTROL DEVICES' (MUTCD).

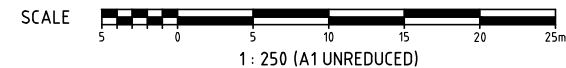


FUNCTIONAL LAYOUT PLAN
SCALE 1:250

NOTE:
REFER TO TTM REPORT 18BRT0087 FOR DETAILS

LEGEND

	KERB AND CHANNEL TYPE D
	KERB AND CHANNEL TYPE E
	PROPOSED FULL DEPTH PAVEMENT
	PROPOSED ASPHALT OVERLAY
	PROPOSED CONCRETE FOOTPATH



DO NOT SCALE THIS DRAWING IF IN DOUBT - ASK!



LOCALITY PLAN

REVISIONS

No	Description	Date	By
A	ISSUED FOR APPROVAL	31.05.2021	CDB
B	EDQ RFI RESPONSE	03.09.2021	CDB
C	EDQ RFI RESPONSE	15.10.2021	CDB

Associated Consultants

Client

ECONOMIC DEVELOPMENT QUEENSLAND (EDQ)

Project

OXLEY SECONDARY COLLEGE REDEVELOPMENT STAGE 2



Approved

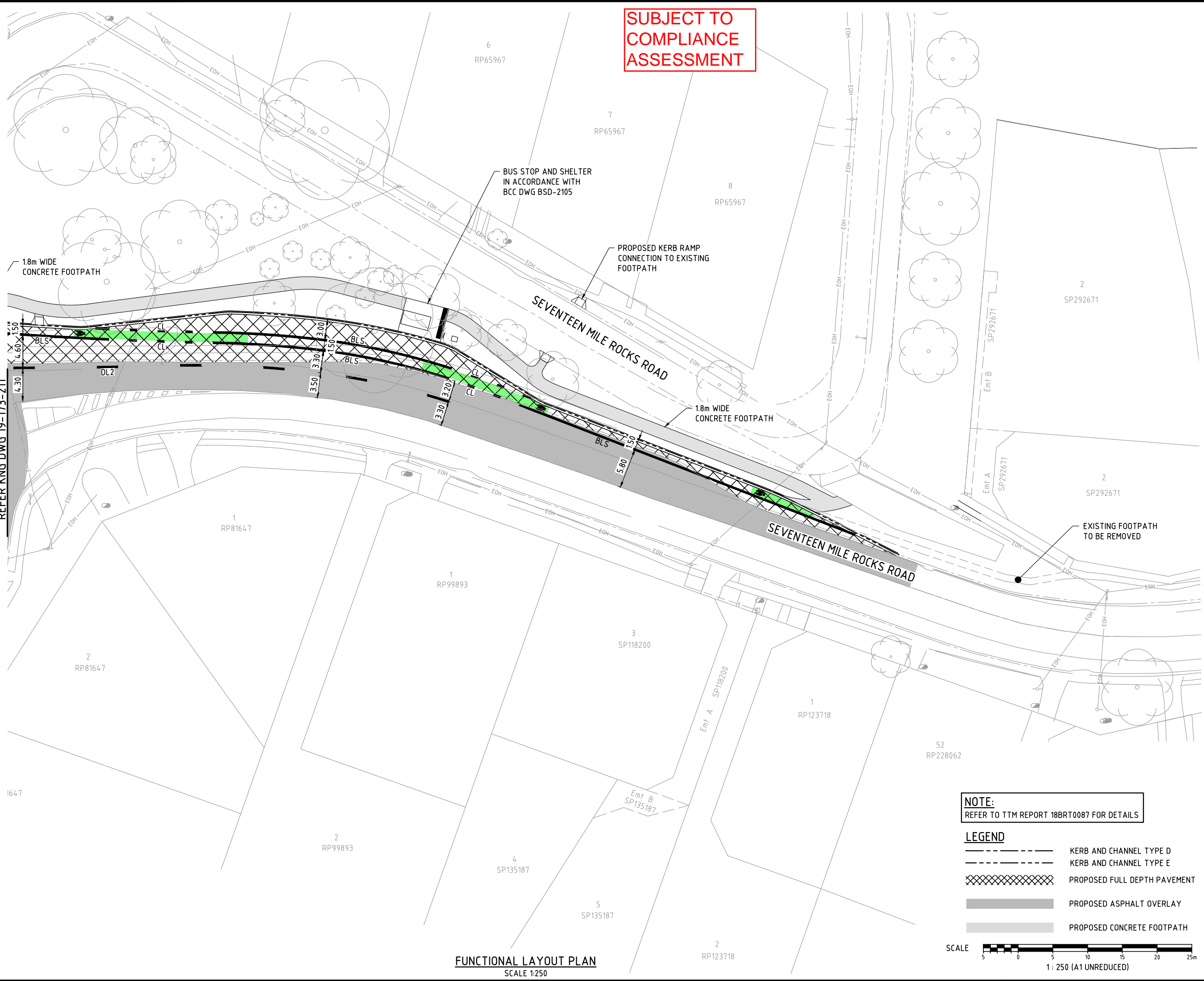
Drawing Title
FUNCTIONAL LAYOUT EXTERNAL WORKS SHEET 1

Drawn CDB	Designed JB	Checked GBG	Date MAY 21
Scale AS SHOWN	Drawing No 19-173-211		Sheet 11 of 12
A1		Revision C	

M:\2019\19173 Oxley Secondary College Redevelopment DA\Engineering\Asst\FUNCTIONAL\19-173-211-EXTERNAL ROAD WORKS.dwg Plotted by: DS on 27/10/2021 12:22:22 PM

M:\2019\19173 Oxley Secondary College Redevelopment DA\Engineering\Asst\FUNCTIONAL\502\19-173-212-EXTERNAL ROAD WORKS.dwg Plotted by: DS on 27/10/2021 12:29:23 PM

REFER KING DWG 19-173-211

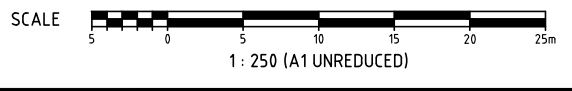


FUNCTIONAL LAYOUT PLAN
SCALE 1:250

NOTE:
REFER TO TTM REPORT 18BRT0087 FOR DETAILS

LEGEND

	KERB AND CHANNEL TYPE D
	KERB AND CHANNEL TYPE E
	PROPOSED FULL DEPTH PAVEMENT
	PROPOSED ASPHALT OVERLAY
	PROPOSED CONCRETE FOOTPATH



DO NOT SCALE THIS DRAWING IF IN DOUBT - ASK!



LOCALITY PLAN

REVISIONS

No	Description	Date	By
A	ISSUED FOR APPROVAL	31.05.2021	CDB
B	EDQ RFI RESPONSE	03.09.2021	CDB
C	EDQ RFI RESPONSE	15.10.2021	CDB

Associated Consultants

Client
ECONOMIC DEVELOPMENT QUEENSLAND (EDQ)

Project
OXLEY SECONDARY COLLEGE REDEVELOPMENT STAGE 2

ABN 35 112 53 611
L1, 62 Astor Tce
Spring Hill Q 4000
07 3017 1900
www.knigroup.com.au

Approved

Drawing Title
FUNCTIONAL LAYOUT EXTERNAL WORKS SHEET 2

Drawn CDB	Designed JB	Checked GBG	Date MAY 21
Scale AS SHOWN	Drawing No 19-173-212		Sheet 12 of 12
A1	Revision C		