

APPENDIX B

BOAT PARKING FACILITIES BY CALIBRE

WEINAM CREEK PDA

REDLAND BAY

PRECINCT 3A BOAT RAMP ACCESS - CIVIL WORKS FOR REDLAND INVESTMENT CORPORATION

REDLAND
INVESTMENT CORPORATION



LOCALITY PLAN
N.T.S

DRAWING INDEX

GENERAL

- 100 COVER SHEET AND DRAWING INDEX
- 200 DEMOLITION PLAN

ROADWORKS

- 300 ROADWORKS AND DRAINAGE LAYOUT PLAN
- 310 ROAD WORKS CROSS SECTION
- 350 SIGNAGE AND LINEMARKING LAYOUT PLAN
- 360 PAVEMENT DETAIL PLAN
- 370 TURNING TEMPLATE LAYOUT PLAN

WATER RETICULATION

- 600 WATER RETICULATION LAYOUT PLAN

REDLANDS SHIRE COUNCIL

SURVEYOR

CONTOUR & FEATURE SURVEY

DATUM LEVEL

P.S.M. 203153

RL 6.31 AHD

PLANS AND DOCUMENTS
referred to in the PDA
DEVELOPMENT APPROVAL



Approval no: DEV2020/1143

Date: 22-Dec-2021

CONSTRUCTION HOLD POINT

ONCE THE BASE OF MANHOLES, INSPECTION PITS, GULLIES AND FIELD INLETS FOR STORMWATER DRAINAGE AND SEWER RETICULATION HAVE BEEN POURED, FURTHER CONSTRUCTION SHALL NOT PROCEED UNTIL THE SUPERINTENDENT AND OR ENGINEER HAVE INSPECTED THE WORKS FOR FINISHED LEVELS AND APPROVED CONSTRUCTION TO CONTINUE.

CONSTRUCTION NOTES:

THESE DRAWINGS ARE TO BE READ IN CONJUNCTION WITH:

- CALIBRE PROFESSIONAL SERVICES STANDARD SPECIFICATIONS AND JOB SPECIFICATIONS
- SEDIMENT AND EROSION HAZARD ASSESSMENT AND CONTROL PLAN (TO BE PREPARED BY CONTRACTOR)
- ACID SULPHATES SOILS REPORT (PREPARED BY XXXX)
- GEOTECHNICAL REPORT (PREPARED BY XXXX)
- VEGETATION MANAGEMENT PLAN (VMP) (PREPARED BY XXXX)
- ENVIRONMENTAL MANAGEMENT PLAN (EMP) (PREPARED BY XXXX)

CONSTRUCTION HOLD POINT

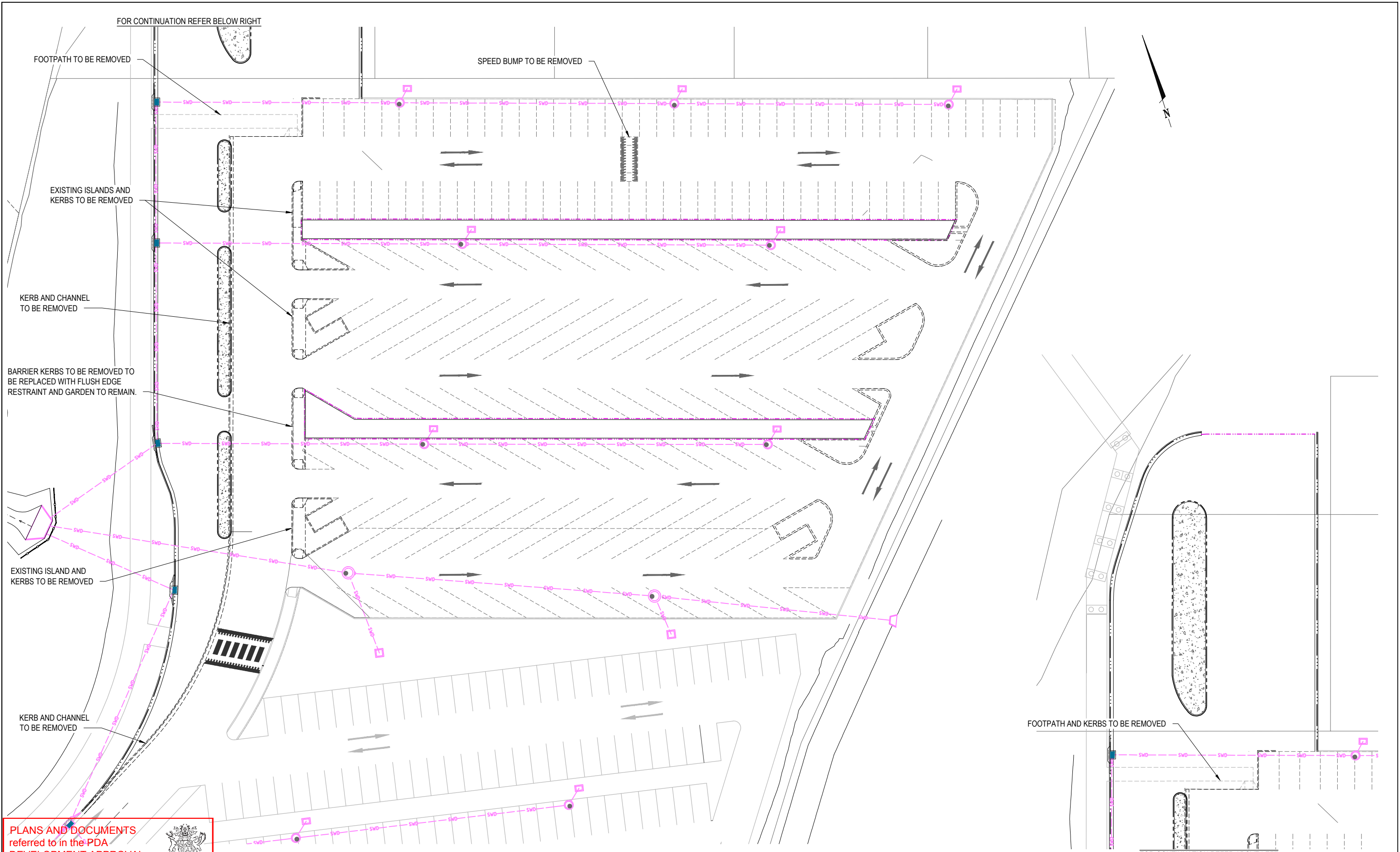
PRIOR TO CONSTRUCTION THE CONTRACTOR SHALL VERIFY LEVELS OF ALL EXISTING CROSSINGS AND CONNECTION POINTS.

WEINAM CREEK

PRECINCT 3A - BOAT RAMP ACCESS

EDQ REF NO. DEV2020/1143

Project No.:	Stage:	Milestone:	Revision Date.:	Drawing No.:	Revision:
18.003166	PRECINCT 1A	DEVELOPMENT APPLICATION	24.06.21	100	1



PLANS AND DOCUMENTS referred to in the PDA DEVELOPMENT APPROVAL

Approval no: DEV2020/1143

Date: 22-Dec-2021



REVISION	DATE	ISSUE DETAILS
1		

DRAWN	DESIGN	DRAWN	STATUS
RT	CH		

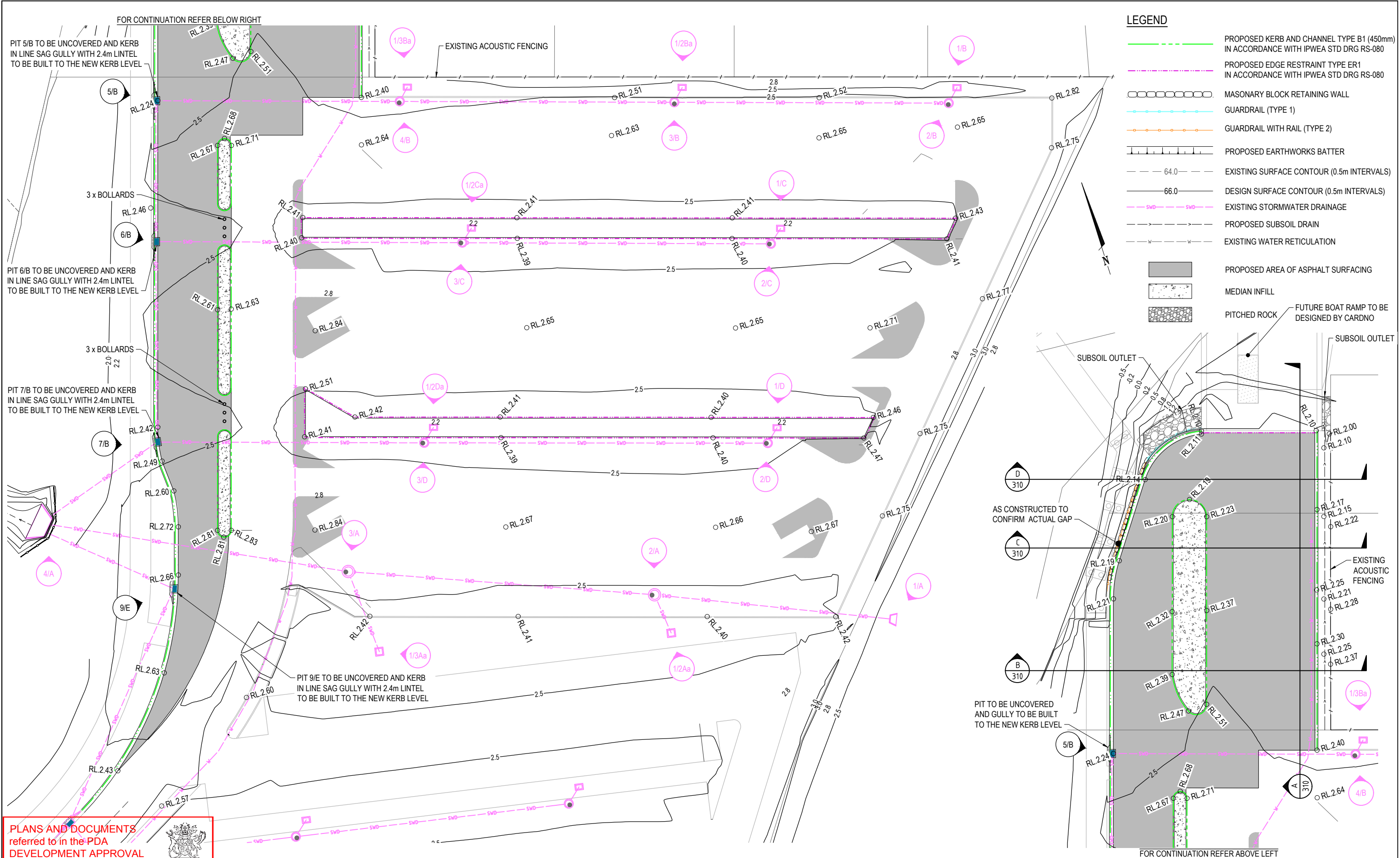
FOR DEVELOPMENT APPLICATION NOT FOR CONSTRUCTION	
DESIGN	APPROVED

SCALE
1:250 5 0 5 10m A1
1:500

CLIENT
REDLAND INVESTMENT CORPORATION
REDLAND INVESTMENT CORPORATION

PROJECT
WEINAM CREEK PRECINCT 3A BOAT RAMP ACCESS
DISCLAIMER ALL DIMENSIONS TO BE CHECKED ON SITE BY CONTRACTOR PRIOR TO CONSTRUCTION. USE WRITTEN DIMENSIONS ONLY. DO NOT SCALE.

DRAWING TITLE
DEMOLITION LAYOUT PLAN
PROJECT No. 18-003166
DRAWING No. 200
REVISION 1



PLANS AND DOCUMENTS referred to in the PDA DEVELOPMENT APPROVAL

Approval no: DEV2020/1143

Date: 22-Dec-2021



REVISION	DATE	ISSUE DETAILS
1		

DRAWN	DESIGN	DRAWN	STATUS
RT	CH		

FOR DEVELOPMENT APPLICATION
NOT FOR CONSTRUCTION

SCALE

1:250 5 0 5 10m A1
1:500

CLIENT

REDLAND
INVESTMENT CORPORATION
REDLAND INVESTMENT CORPORATION

PROJECT

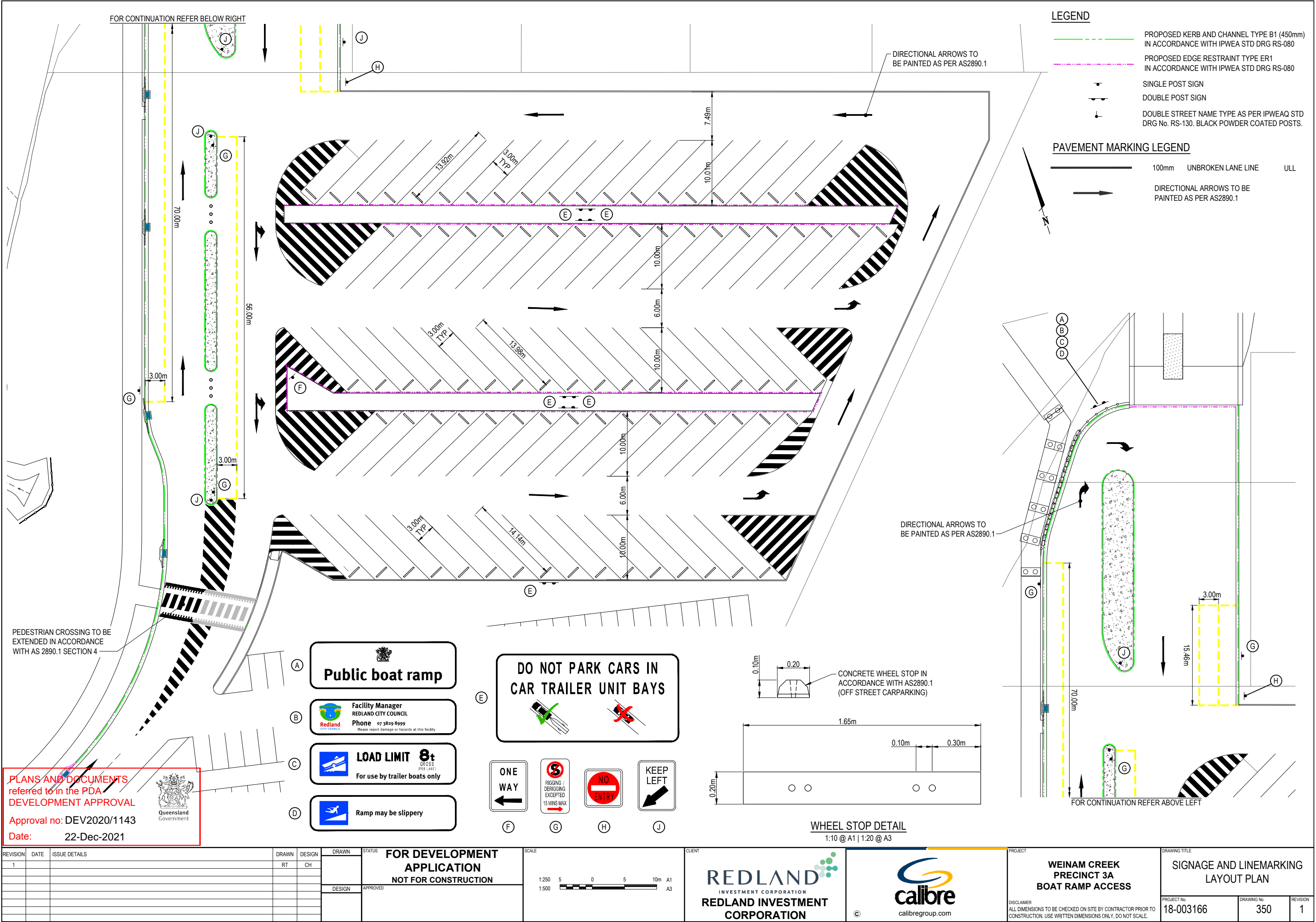
WEINAM CREEK PRECINCT 3A BOAT RAMP ACCESS

DISCLAIMER
ALL DIMENSIONS TO BE CHECKED ON SITE BY CONTRACTOR PRIOR TO CONSTRUCTION. USE WRITTEN DIMENSIONS ONLY. DO NOT SCALE.

DRAWING TITLE

ROADWORKS AND DRAINAGE LAYOUT PLAN

PROJECT No.	DRAWING No.	REVISION
18-003166	300	1



LEGEND

- PROPOSED KERB AND CHANNEL TYPE B1 (450mm) IN ACCORDANCE WITH IPWEA STD DRG RS-080
- PROPOSED EDGE RESTRAINT TYPE ER1 IN ACCORDANCE WITH IPWEA STD DRG RS-080
- SINGLE POST SIGN
- DOUBLE POST SIGN
- DOUBLE STREET NAME TYPE AS PER IPWEAQ STD DRG No. RS-130. BLACK POWDER COATED POSTS.

PAVEMENT MARKING LEGEND

- 100mm UNBROKEN LANE LINE ULL
- DIRECTIONAL ARROWS TO BE PAINTED AS PER AS2890.1

PEDESTRIAN CROSSING TO BE EXTENDED IN ACCORDANCE WITH AS 2890.1 SECTION 4

PLANS AND DOCUMENTS referred to in the PDA DEVELOPMENT APPROVAL

Approval no: DEV2020/1143
Date: 22-Dec-2021



Public boat ramp

Facility Manager
REDLAND CITY COUNCIL
Phone 07 3829 8999
Please report damage or hazards at this facility.

LOAD LIMIT 8t
GROSS
For use by trailer boats only

Ramp may be slippery

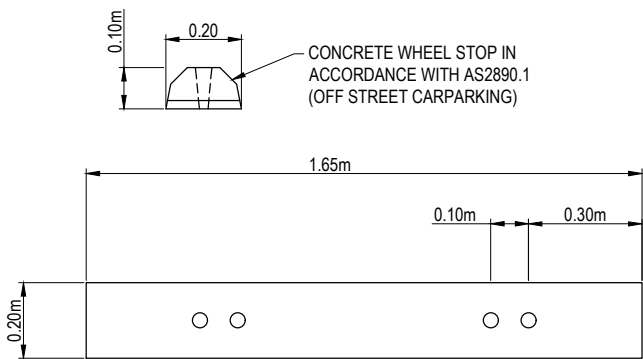
DO NOT PARK CARS IN CAR TRAILER UNIT BAYS

ONE WAY

RIGGING / DERIGGING EXCEPTED 15 MINS MAX

NO ENTRY

KEEP LEFT

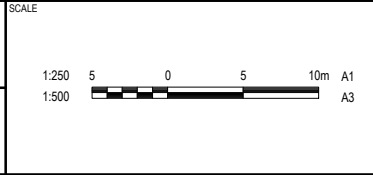


WHEEL STOP DETAIL
1:10 @ A1 | 1:20 @ A3

REVISION	DATE	ISSUE DETAILS
1		

DRAWN	DESIGN
RT	CH

DRAWN	STATUS
	FOR DEVELOPMENT APPLICATION NOT FOR CONSTRUCTION
DESIGN	APPROVED



CLIENT

REDLAND
INVESTMENT CORPORATION
REDLAND INVESTMENT CORPORATION

calibre
calibregroup.com

PROJECT

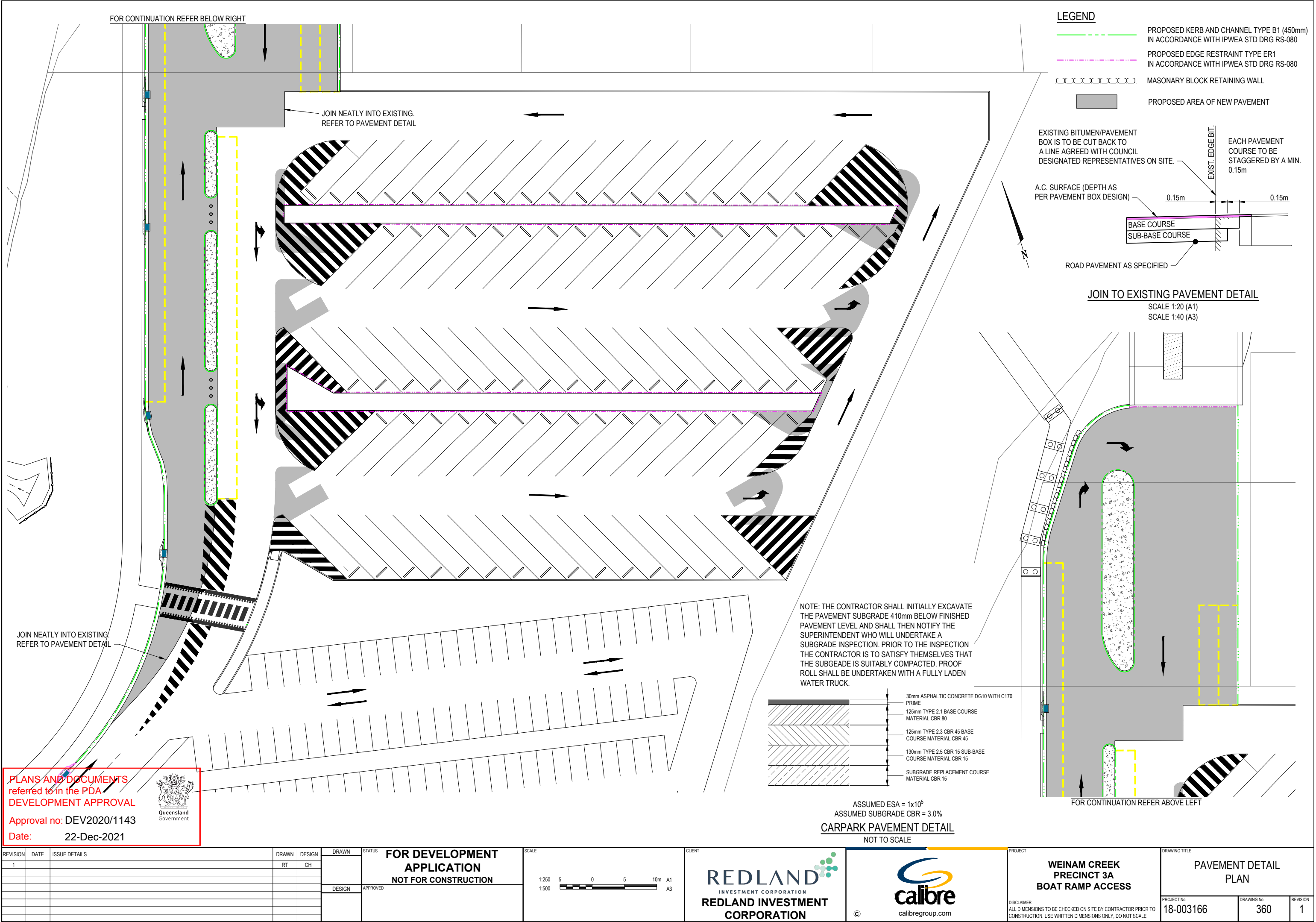
**WEINAM CREEK
PRECINCT 3A
BOAT RAMP ACCESS**

DISCLAIMER
ALL DIMENSIONS TO BE CHECKED ON SITE BY CONTRACTOR PRIOR TO CONSTRUCTION. USE WRITTEN DIMENSIONS ONLY. DO NOT SCALE.

DRAWING TITLE

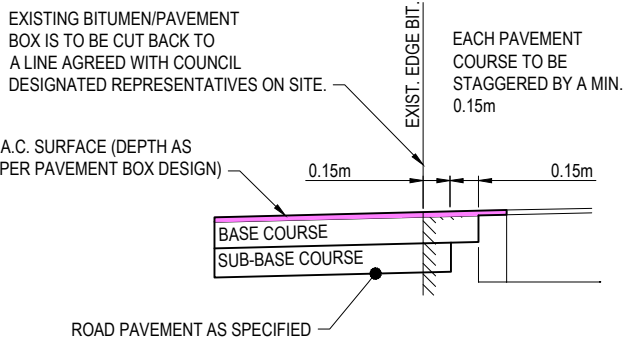
**SIGNAGE AND LINEMARKING
LAYOUT PLAN**

PROJECT No.	DRAWING No.	REVISION
18-003166	350	1

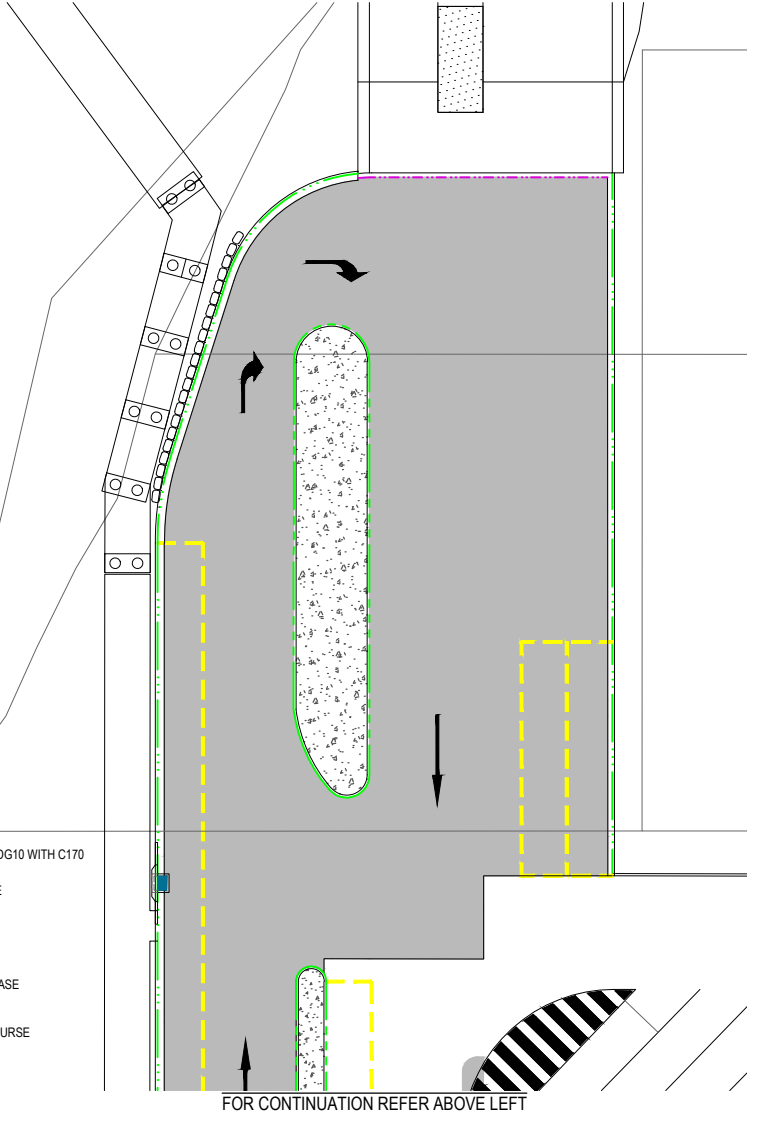


LEGEND

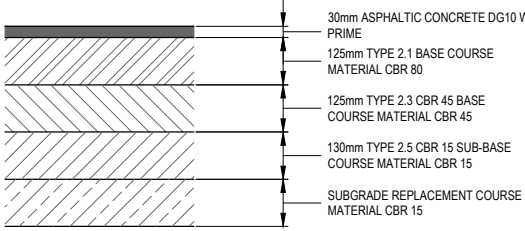
- PROPOSED KERB AND CHANNEL TYPE B1 (450mm) IN ACCORDANCE WITH IPWEA STD DRG RS-080
- PROPOSED EDGE RESTRAINT TYPE ER1 IN ACCORDANCE WITH IPWEA STD DRG RS-080
- MASONRY BLOCK RETAINING WALL
- PROPOSED AREA OF NEW PAVEMENT



JOIN TO EXISTING PAVEMENT DETAIL
SCALE 1:20 (A1)
SCALE 1:40 (A3)



NOTE: THE CONTRACTOR SHALL INITIALLY EXCAVATE THE PAVEMENT SUBGRADE 410mm BELOW FINISHED PAVEMENT LEVEL AND SHALL THEN NOTIFY THE SUPERINTENDENT WHO WILL UNDERTAKE A SUBGRADE INSPECTION. PRIOR TO THE INSPECTION THE CONTRACTOR IS TO SATISFY THEMSELVES THAT THE SUBGRADE IS SUITABLY COMPACTED. PROOF ROLL SHALL BE UNDERTAKEN WITH A FULLY LADEN WATER TRUCK.



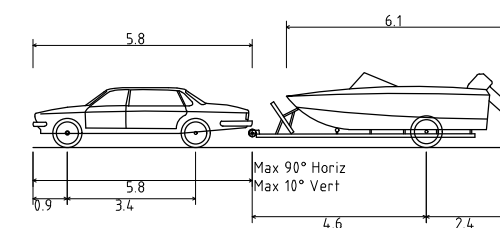
ASSUMED ESA = 1x10⁵
ASSUMED SUBGRADE CBR = 3.0%
CARPAK PAVEMENT DETAIL
NOT TO SCALE

PLANS AND DOCUMENTS referred to in the PDA DEVELOPMENT APPROVAL

Approval no: DEV2020/1143

Date: 22-Dec-2021

REVISION	DATE	ISSUE DETAILS	DRAWN	DESIGN	DRAWN	STATUS	FOR DEVELOPMENT APPLICATION NOT FOR CONSTRUCTION	SCALE	CLIENT	PROJECT	DRAWING TITLE
1			RT	CH				1:250 1:500	REDLAND INVESTMENT CORPORATION	WEINAM CREEK PRECINCT 3A BOAT RAMP ACCESS	PAVEMENT DETAIL PLAN
								DISCLAIMER ALL DIMENSIONS TO BE CHECKED ON SITE BY CONTRACTOR PRIOR TO CONSTRUCTION. USE WRITTEN DIMENSIONS ONLY, DO NOT SCALE.			
								PROJECT No. 18-003166 DRAWING No. 360 REVISION 1			



12.800m
2.400m
1.987m
0.273m
2.400m
4.00s
7.300m



Queensland
Government

[illegible]

