

12-16 THOMPSON ST, BOWEN HILLS 4006 - TOWER 1 LIGHTING DESIGN

APRIL 2021



LIGHTING DESIGN PLAN

With a creative use of lighting, Bowen Hills new health and business precinct will invigorate the existing industrial urban fabric. The urban precinct will activate, excite and contribute to the city of lights of Bowen Hills.

Lighting is provided for precinct identity, occasion and inspiring discovery. This is implemented in a considered manner through up lighting, crown lighting, feature blade lighting, feature lighting, vegetation lighting and plaza seat lighting.

These lighting principles have been integrated into the overall building and architectural design in a subtle and effective way. The urban precinct lighting will ensure an activated, exciting, secure and meaningful precinct for all occupants using the space.

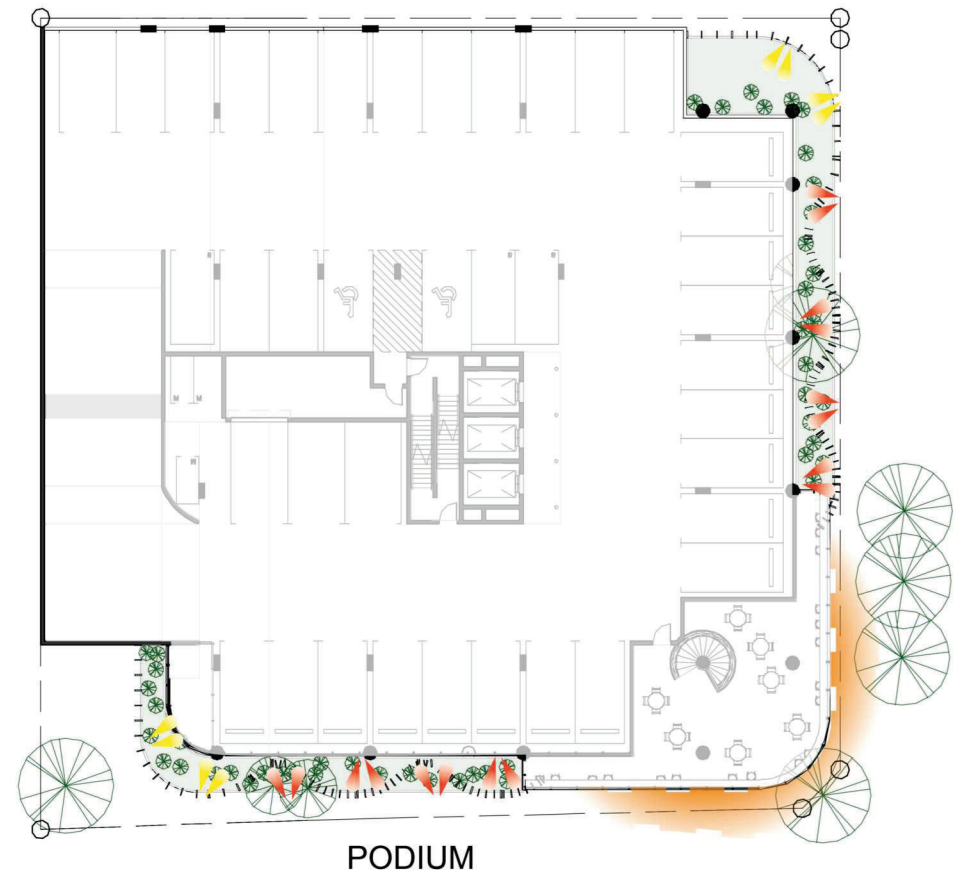
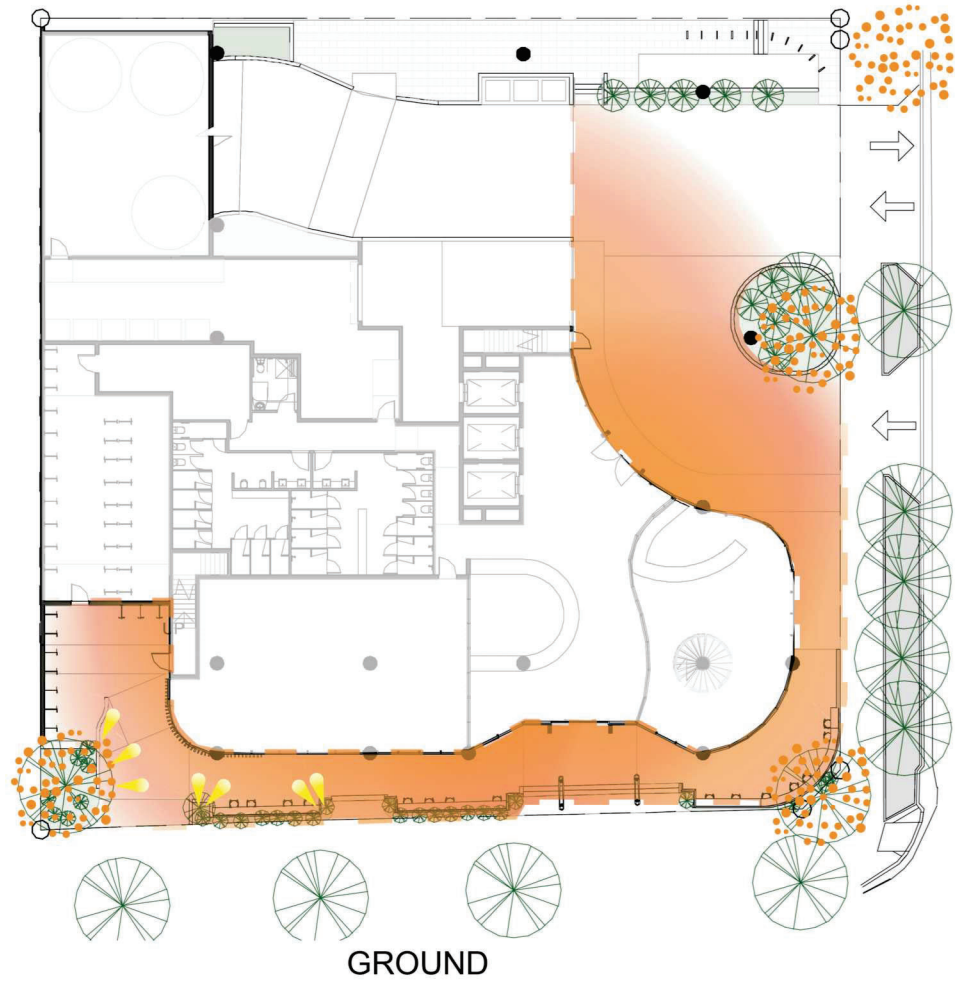
Precise matters will be resolved in detailed design with an electrical engineer.

PLANS AND DOCUMENTS
referred to in the PDA
DEVELOPMENT APPROVAL

Approval no: DEV2020/1124

Date: 22 December 2021





lighting for occasion

- Street level lighting from the building and trees contribute to the vibrant precinct at night.



lighting for identity

- Building fronts facing towards open parks and surrounding buildings.

- Bud lighting to larger trees at podium and roof levels.

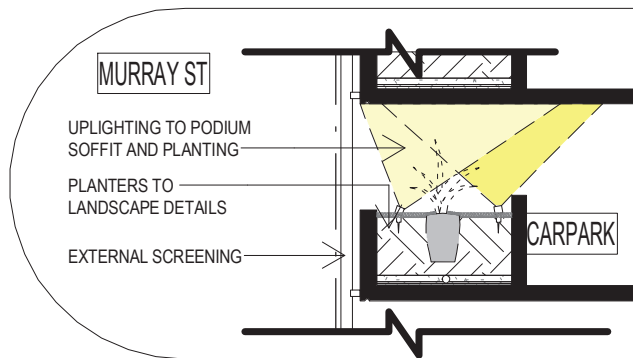
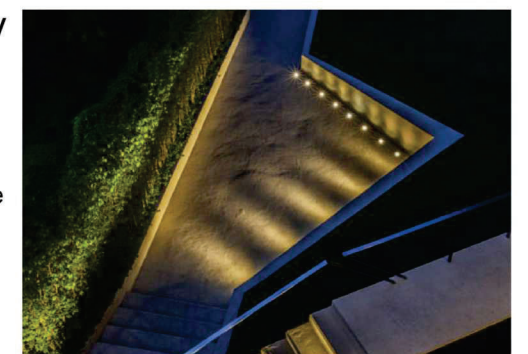
- Active lighting to building podium (first four storey) frontages.



lighting for discovery

- Activate spaces through creative lighting.

- Lighting used for wayfinding, to help first-time visitors navigate and experience the site without confusions.



2 TYPICAL PODIUM LIGHT - SECTION
1 : 100@A3

PLANS AND DOCUMENTS referred to in the PDA DEVELOPMENT APPROVAL

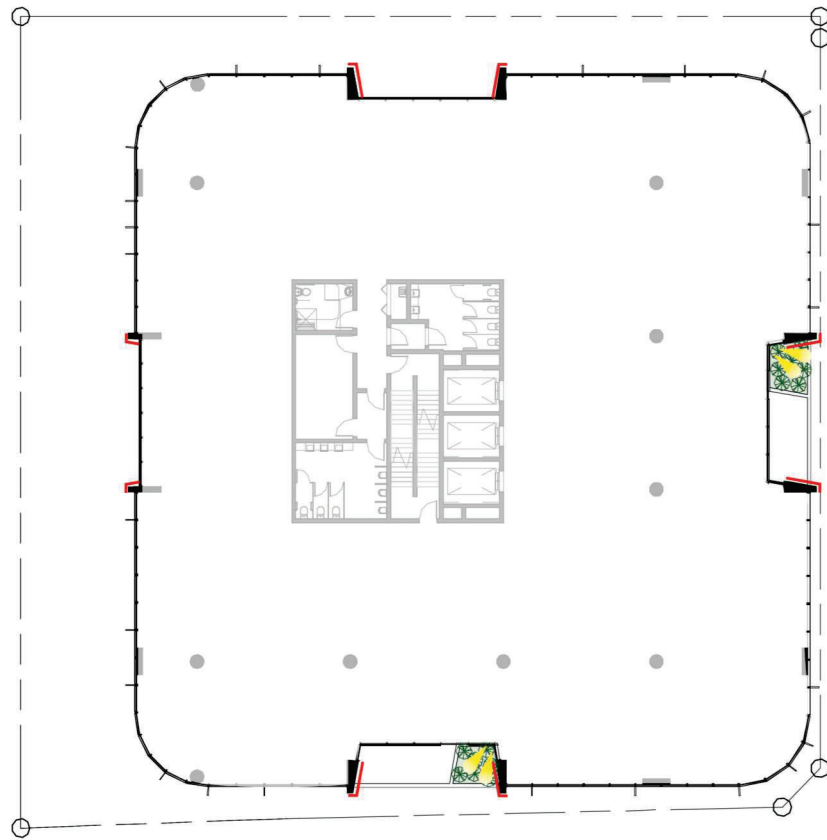
Approval no: DEV2020/1124

Date: 22 December 2021

LEGEND:

- uplighting to facade
- lighting to podium landscaping
- bud lighting to ground level trees
- building vertical edges
- blade lights





TOWER

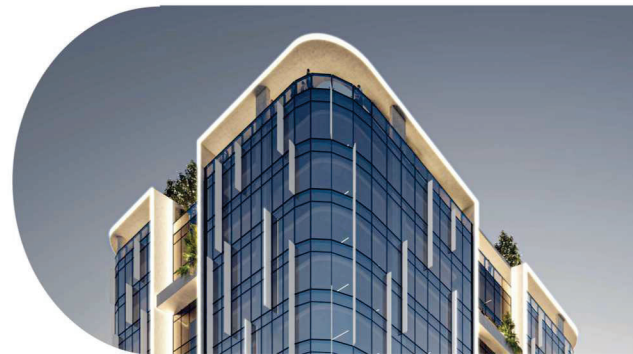


ROOF



lighting for occasion

- Key structures illuminated at night contribute to the active and vibrant precinct



lighting for identity

- Lighting of Building Crown and Blade walls identify the building and the precinct

- Building fronts viewable from long distances when looking towards the city from key approaches or locations.

- Enrich the visual appeal of Bowen Hills and Newstead.



lighting for discovery

- Creative use of lighting to roof top terraces enrich the experience users in the outdoor spaces

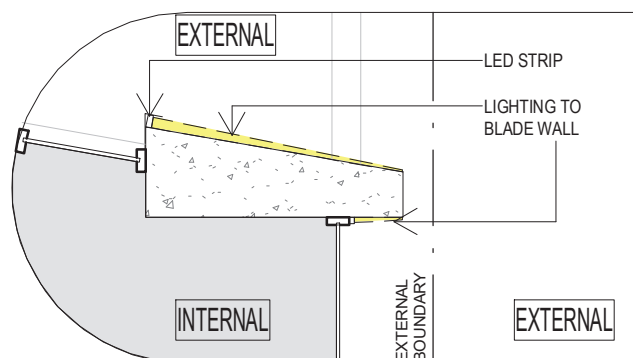
- Lighting of the Building Crown showcases hidden spaces above ground



PLANS AND DOCUMENTS referred to in the PDA **DEVELOPMENT APPROVAL**

Approval no: DEV2020/1124

Date: 22 December 2021



2 TYPICAL BLADE WALL LIGHT - PLAN
1:50@A3

LEGEND:

- uplighting to facade
- lighting to podium landscaping
- bud lighting to roof level trees
- building vertical edges
- blade lights

