

OPEN CHANNEL DESIGN - LOT 19

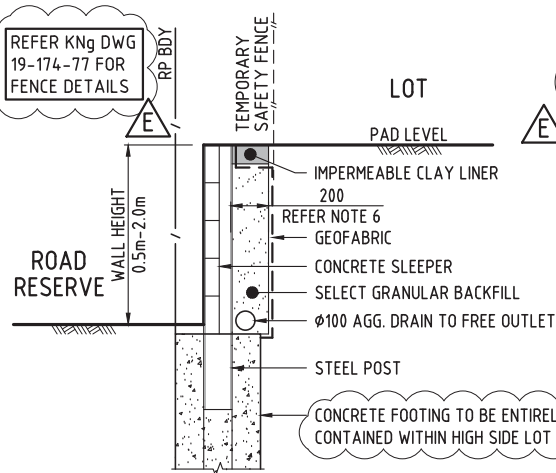
Q100 FLOW Qcap = 0.529 m³/s
Qreqd = 0.522 m³/s

DEPTH = 0.18m (0.30m TOTAL)
n = 0.035 (GRASS)
s = 11% (AVERAGE)
x = 0.6
A = 0.24m² WP = 2.08 V = 2.23 m/s

OPEN CHANNEL DESIGN - LOT 14

Q100 FLOW Qcap = 0.435 m³/s
Qreqd = 0.434 m³/s

DEPTH = 0.14m (0.30m TOTAL)
n = 0.035 (GRASS)
s = 21% (AVERAGE)
x = 0.6
A = 0.16m² WP = 1.75 V = 2.68 m/s



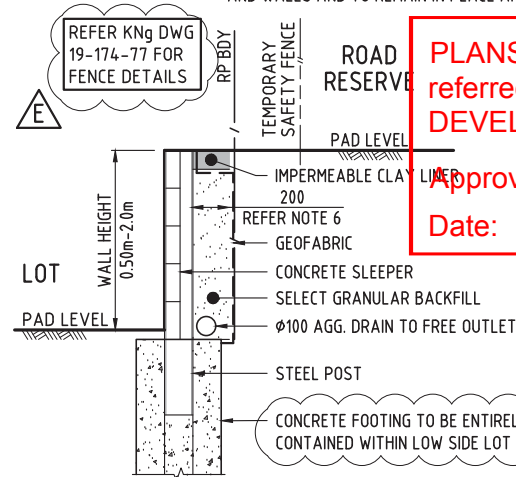
I-BEAM SLEEPER WALL DETAIL - ABOVE ADJACENT ROAD RESERVE

SECTION B
SCALE NTS

NOTE:
REFER MANUFACTURERS SPECIFICATIONS FOR CONSTRUCTION DETAILS

I-BEAM SLEEPER WALL DETAIL - BETWEEN LOTS WALL LOCATED IN HIGHER LOT

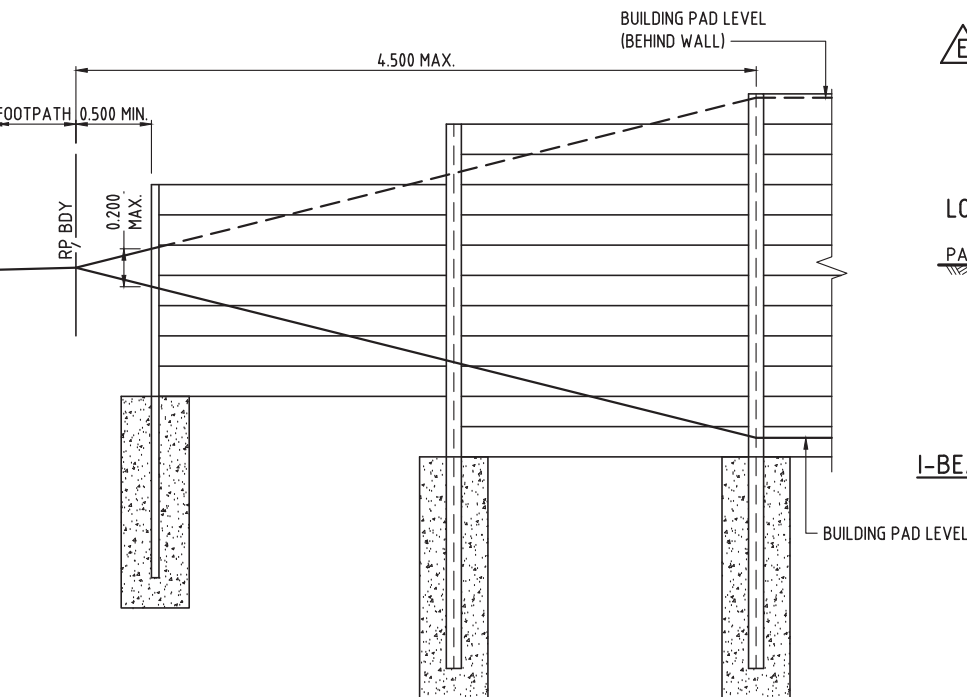
SECTION A
SCALE NTS



I-BEAM SLEEPER WALL DETAIL - BETWEEN LOTS WALL LOCATED IN HIGHER LOT

SECTION C
SCALE NTS

NOTE
REFER 19-174-15 FOR LEGEND AND NOTES



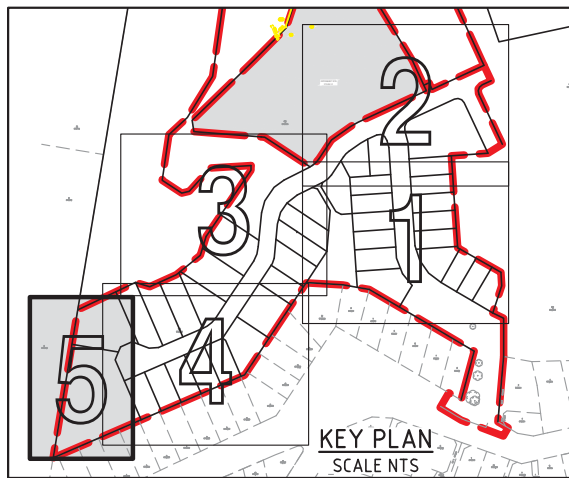
TYPICAL RETAINING WALL (DESIGNED BY OTHERS) SIDE BOUNDARY ELEVATION AT FRONT OF ALLOTMENTS

SCALE 1:25

SCALE 1:25 (A1 UNREDUCED)

NOTE

- ALL WALLS TO HAVE SUITABLE DRAINAGE DESIGN (IN ACCORDANCE WITH MANUFACTURERS SPECIFICATIONS) INCLUDED WITH SLOTTED PIPE CONNECTIONS TO THE STORMWATER SYSTEM. IF NO STORMWATER PIT IS ADJACENT TO THE OUTLET, CONNECT TO KERB ADAPTOR.
- END OF WALL LOCATIONS HAVE BEEN SHOWN DIAGRAMMATICALLY, HOWEVER FINAL LENGTH TO BE DETERMINED BY THE SUPERINTENDENT'S REPRESENTATIVE WHERE THE HEIGHT DIFFERENCE FROM TOP AND BOTTOM OF BATTER EXCEEDS 400mm.
- CONTRACTOR TO ENSURE ALL BATTERS ARE TO BE 1:2 MAX SLOPE (1:1 ACCEPTABLE FOR WITHIN ROCK).
- THE CONTRACTOR IS RESPONSIBLE FOR DESIGN AND CONSTRUCTION CERTIFICATION OF RETAINING WALLS BY AN APPROPRIATELY QUALIFIED AND REGISTERED PROFESSIONAL ENGINEER OF QUEENSLAND (RPEQ), INCLUDING PROVISION OF CERTIFIED FORMS 15 AND 16 (INCLUDING FENCE BRACKETS AND SLEEVES). DESIGN CERTIFICATION TO BE PROVIDED TO THE SUPERINTENDENT A MINIMUM OF TWO WEEKS PRIOR TO COMMENCEMENT OF CONSTRUCTION. WALL CONSTRUCTION SHALL NOT COMMENCE UNTIL INSTRUCTIONS TO PROCEED ARE RECEIVED FROM THE SUPERINTENDENT.
- ALL RETAINING WALLS TO BE DESIGNED AND CONSTRUCTED AS CONCRETE SLEEPER WALLS UNLESS NOTED OTHERWISE, OR EQUIVALENT WHERE ALTERNATIVE PRODUCTS ARE PROPOSED, DETAILS ARE TO BE SUBMITTED TO SUPERINTENDENT PRIOR TO ORDERING.
- FINAL WALL OFFSET TO SUIT WALL HEIGHT AND DEPTH OF NO FINES INFILL IN ACCORDANCE WITH MANUFACTURERS SPECIFICATIONS AND TO BE CONFIRMED BY SUPERINTENDENT PRIOR TO CONSTRUCTION.
- CONTRACTOR IS RESPONSIBLE FOR PLACEMENT OF SAFETY FENCING COMPLIANT WITH CURRENT SPECIFICATION AT THE TOP OF ALL BATTERS AND WALLS AND TO REMAIN IN PLACE AFTER CONSTRUCTION.



PLANS AND DOCUMENTS referred to in the PDA DEVELOPMENT APPROVAL

Approval no: DEV2020/1099

Date: 12 November 2021

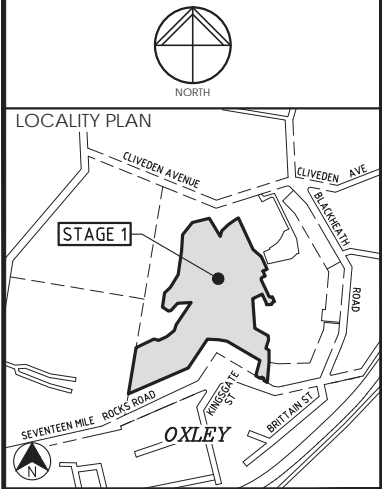


SCALE 1:250 (A1 UNREDUCED)

EARTHWORKS SPOT LEVELS PLAN SCALE 1:250

REFER KN DWG 19-174-18

DO NOT SCALE THIS DRAWING IF IN DOUBT - ASK!



REVISIONS			
No	Description	Date	By
A	FOR TENDER	30.07.20	DES
B	ISSUED FOR APPROVAL	05.02.21	DES
C	SECTION C ADDED	16.06.21	DES
D	REVISED OPEN CHANNEL	20.08.21	DES
E	NOTES ADDED	25.10.21	SA

ECONOMIC DEVELOPMENT QUEENSLAND (EDQ)

OXLEY SECONDARY COLLEGE REDEVELOPMENT STAGE 1

kn group
ABN 35 112 53 611
L1, 62 Astor Tce
Spring Hill Q 4000
07 3017 1900
www.kngroup.com.au

Approved
Robert William Mander
BEng(Civil), CPEng.
RPEQ:12805
2021.10.25 17:15:36 +10'00'

Drawing Title
EARTHWORKS
SPOT LEVELS PLAN
SHEET 5

Drawn DES	Designed JS	Checked SM	Date AUG '21
Scale AS SHOWN	Drawing No 19-174-19	Sheet 19 of 77	Revision E