

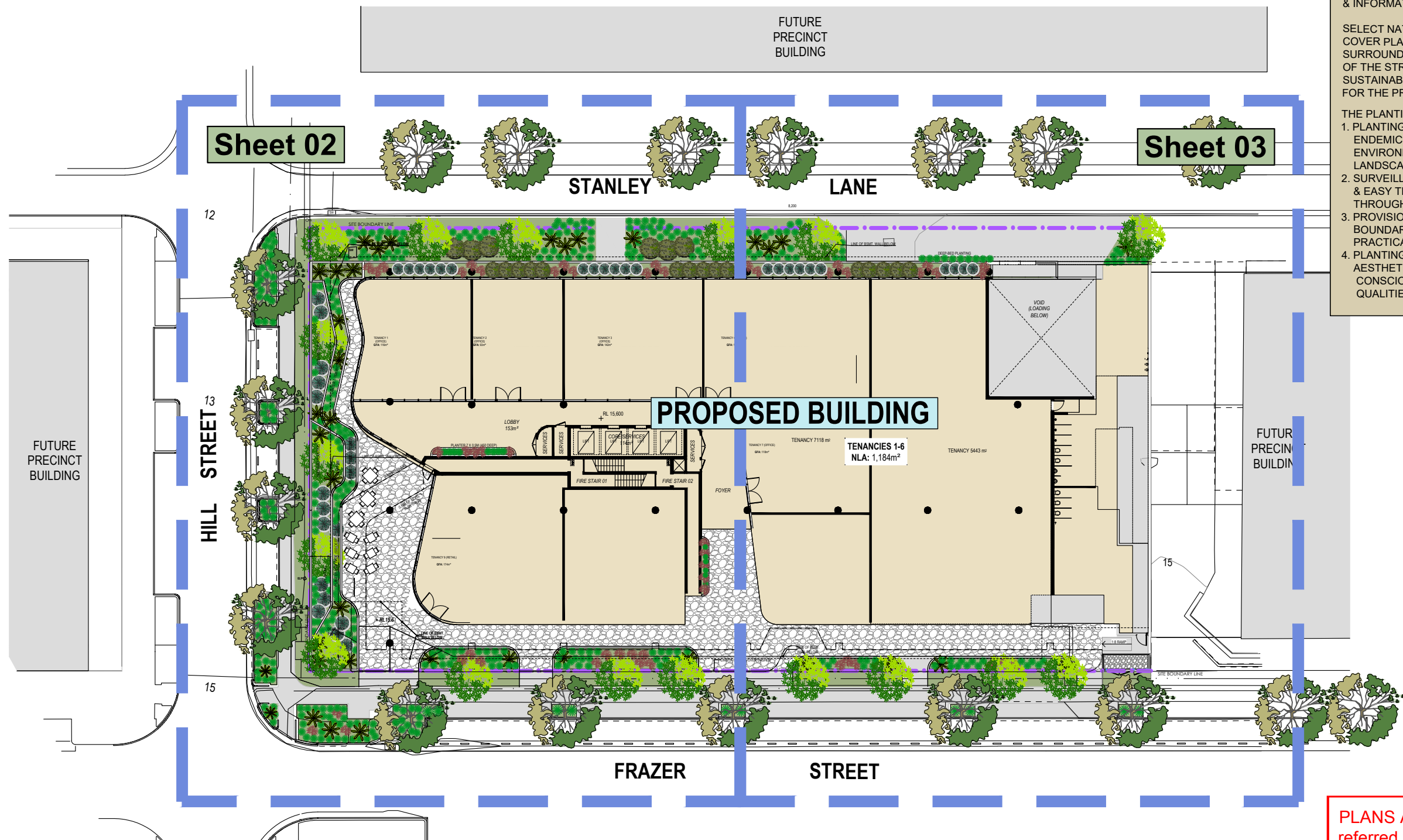
DESIGN APPROACH -

THE PROPOSED DESIGN APPROACH FOR THIS PROJECT IS ONE OF PRACTICAL DESIGN SOLUTIONS FOR A SUSTAINABLE AND AESTHETIC OUTCOME. THIS WILL BE ACHIEVED VIA THE FOLLOWING NOTES & INFORMATION.

SELECT NATIVE TREES, SHRUBS AND GROUND-COVER PLANTINGS TO PROPOSED BUILDINGS SURROUNDING AREAS TO SOFTEN THE BUILT FORM OF THE STRUCTURE & ASSIST IN CREATING A SUSTAINABLE, SAFE & FUNCTIONAL ENVIRONMENT FOR THE PROPOSED DEVELOPMENT.

THE PLANTING DESIGN WILL INCORPORATE -

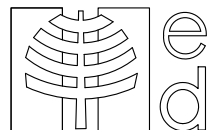
1. PLANTINGS TO BE PREDOMINANTLY NATIVE ENDEMIC SPECIES TO COMPLIMENT THE EXISTING ENVIRONMENT & LOCAL COUNCILS LANDSCAPE DESIGN POLICY.
2. SURVEILLANCE & SIGHTLINE CRITERIA FOR SAFE & EASY TRAVEL FOR USERS OF THE BUILDING THROUGH THE DEVELOPMENT SITE.
3. PROVISION OF TREE PLANTINGS TO DEEP PLANTING BOUNDARY AREAS AND DRIVEWAYS, WHERE PRACTICAL & POSSIBLE.
4. PLANTING SPECIES WILL BE CHOSEN FOR THEIR AESTHETIC VALUE, SUSTAINABILITY DURING WATER CONSCIOUS PERIODS AND LOW MAINTENANCE QUALITIES.



SHEET 01 - LANDSCAPE OVERALL SITE PLAN - MCU APPLICATION - HEALTH AND KNOWLEDGE PRECINT - GOLD COAST.

PLANS AND DOCUMENTS
referred to in the PDA
DEVELOPMENT APPROVAL

Approval no: DEV2020/1133
Date: 2-Jun-2021



AMENDMENTS

Issue	date	description
A	19.06.20	ISSUE FOR REVIEW
B	02.02.21	REDESIGN WORKS - ISSUE FOR REVIEW

Copyright in the whole and every part of this document belongs to ELEMENT DESIGN QLD PTY LTD and may not be used, sold, transferred, copied or reproduced in whole or in part in any manner or form or in or on any media to any person without the prior written consent of ELEMENT DESIGN QLD PTY LTD.



element design landscape architecture

MASTER PLANNING • SUBDIVISIONS •
COMMERCIAL DEVELOPMENTS • RESORTS •
PARKLANDS • REVEGETATION • MULTI-UNITS

151 Brisbane Rd. Mooloolaba
Phone 07 5444 6155 Fax 07 5444 6055
PO Box 1546, Buderim QLD 4556
admin@elementdesign.net.au

PROJECT PROXIMA, GOLD COAST
HEALTH & KNOWLEDGE PRECINT

CLIENT EVANS LONG

DWG TITLE LANDSCAPE CONCEPT PLAN

ED 20266 MCU - 01



Date FEBRUARY 2021

Scale 1:400 @ A3

Design NH Drawn NH

Sheet 01 OF 08

Issue

B

SELECT FEATURE SHRUB AND GROUND COVER PLANTINGS TO DESIGNED RAISED AND GROUND PLANTING AREAS IN ACCORDANCE WITH GCCC LANDSCAPE CODE AND SPECIES REQUIREMENTS

PROVIDE FEATURE NATIVE STREET TREES AND GROUND COVER UNDER PLANTINGS TO THE STREETSCAPE IN ACCORDANCE WITH GCCC LANDSCAPE CODE AND SPECIES REQUIREMENTS

ADJACENT PRECINCT STREET TREES AND UNDER PLANTINGS


SELECT FEATURE SHRUB AND GROUND COVER PLANTINGS TO DESIGNED RAISED AND GROUND PLANTING AREAS IN ACCORDANCE WITH GCCC LANDSCAPE CODE AND SPECIES REQUIREMENTS

SELECT FEATURE SHRUB AND GROUND COVER PLANTINGS TO DESIGNED RAISED AND GROUND PLANTING AREAS IN ACCORDANCE WITH GCCC LANDSCAPE CODE AND SPECIES REQUIREMENTS

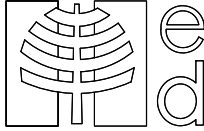
PLANS AND DOCUMENTS referred to in the PDA DEVELOPMENT APPROVAL

Approval no: DEV2020/1133

Date: 2-Jun-2021






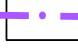

Queensland Government


SHEET 02 - GROUND FLOOR - LANDSCAPE CONCEPT PLAN - MCU APPLICATION -



AMENDMENTS	
Rev	Description
A	19.06.20 ISSUE FOR REVIEW
B	02.02.21 REDESIGN WORKS - ISSUE FOR REVIEW

Copyright in the whole and every part of this document belongs to ELEMENT DESIGN QLD PTY LTD and may not be used, sold, transferred, copied or reproduced in whole or in part in any manner or form or in or on any media to any person without the prior written consent of ELEMENT DESIGN QLD PTY LTD.

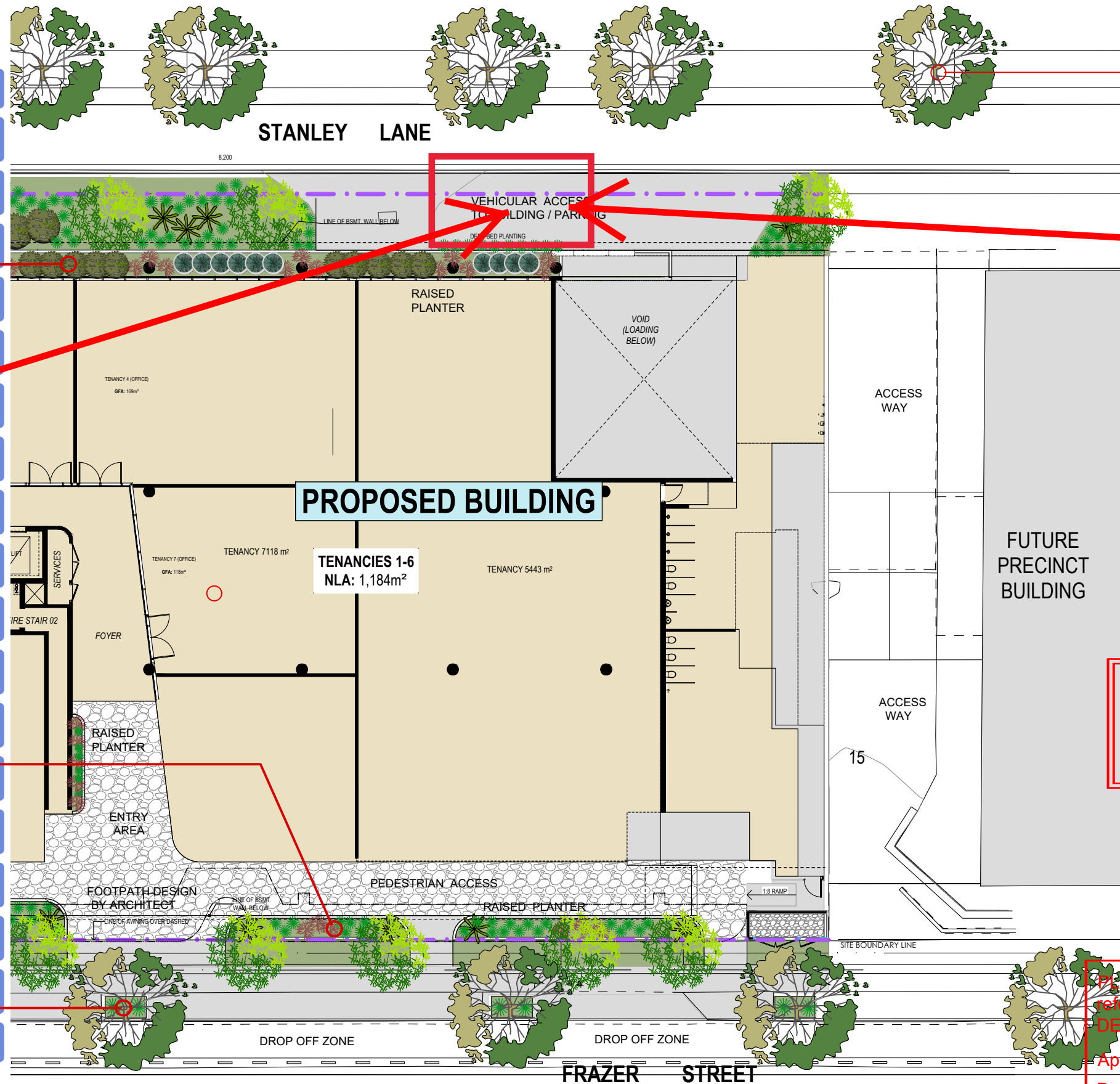
LEGEND	
	TREE PLANTING
	SMALL FEATURE TREE PLANTINGS
	SHRUB PLANTINGS
	ACCENT PLANTING
	FOOTPATH TO ARCHITECTS DESIGN
	BOUNDARY


element design

element design landscape architecture
MASTER PLANNING • SUBDIVISIONS • COMMERCIAL DEVELOPMENTS • RESORTS • PARKLANDS • REVEGETATION • MULT-UNITS
151 Brisbane Rd., Mooloolaba
Phone 07 5444 6155 Fax 07 5444 6055
PO Box 1546, Buderim QLD 4556
admin@elementdesign.net.au

PROJECT: PROXIMA , GOLD COAST HEALTH & KNOWLEDGE PRECINT	
CLIENT	EVANS LONG
DWG TITLE	LANDSCAPE CONCEPT PLAN
ED 20266 MCU - 02	

Date	FEBRUARY 2021
Scale	1:250 @ A3
Design	NH
Drawn	NH
Sheet	02 OF 08
issue	B



ADJACENT PRECINCT STREET TREES AND UNDER PLANTINGS

SELECT FEATURE SHRUB AND GROUND COVER PLANTINGS TO DESIGNED RAISED AND GROUND PLANTING AREAS IN ACCORDANCE WITH GCCC LANDSCAPE CODE AND SPECIES REQUIREMENTS

Provision of treatment to visually define the two driveways from the rest of the verge.

SELECT FEATURE SHRUB AND GROUND COVER PLANTINGS TO DESIGNED RAISED AND GROUND PLANTING AREAS IN ACCORDANCE WITH GCCC LANDSCAPE CODE AND SPECIES REQUIREMENTS

PROVIDE FEATURE NATIVE STREET TREES AND GROUND COVER UNDER PLANTINGS TO THE STREETSCAPE IN ACCORDANCE WITH GCCC LANDSCAPE CODE AND SPECIES REQUIREMENTS

Each crossover shall be independent, and the splays shall not overlap.

AMENDED IN RED

By: K McGill
Date: 28 April 2021



PLANS AND DOCUMENTS referred to in the PDA DEVELOPMENT APPROVAL

Approval no: DEV2020/1133
Date: 2-Jun-2021



SHEET 03 - GROUND FLOOR - LANDSCAPE CONCEPT PLAN - MCU APPLICATION -

AMENDMENTS	
Issue	Description
A	19.06.20 ISSUE FOR REVIEW
B	02.02.21 REDESIGN WORKS - ISSUE FOR REVIEW

LEGEND

	TREE PLANTING		ACCENT PLANTING		FOOTPATH TO ARCHITECTS DESIGN		BOUNDARY
	SMALL FEATURE TREE PLANTINGS		SHRUB PLANTINGS				

element design
landscape architecture

MASTER PLANNING • SUBDIVISIONS • COMMERCIAL DEVELOPMENTS • RESORTS • PARKLANDS • REVEGETATION • MULTIHUNTS

151 Brisbane Rd. Mooloolaba
Phone 07 5444 6155 Fax 07 5444 6055
PO Box 1546, Buderim QLD 4556
admin@elementdesign.net.au

PROXIMA, GOLD COAST HEALTH & KNOWLEDGE PRECINCT

CLIENT: **EVANS LONG**

DWG TITLE: **LANDSCAPE CONCEPT PLAN**

ED 20266 MCU - 03

North arrow

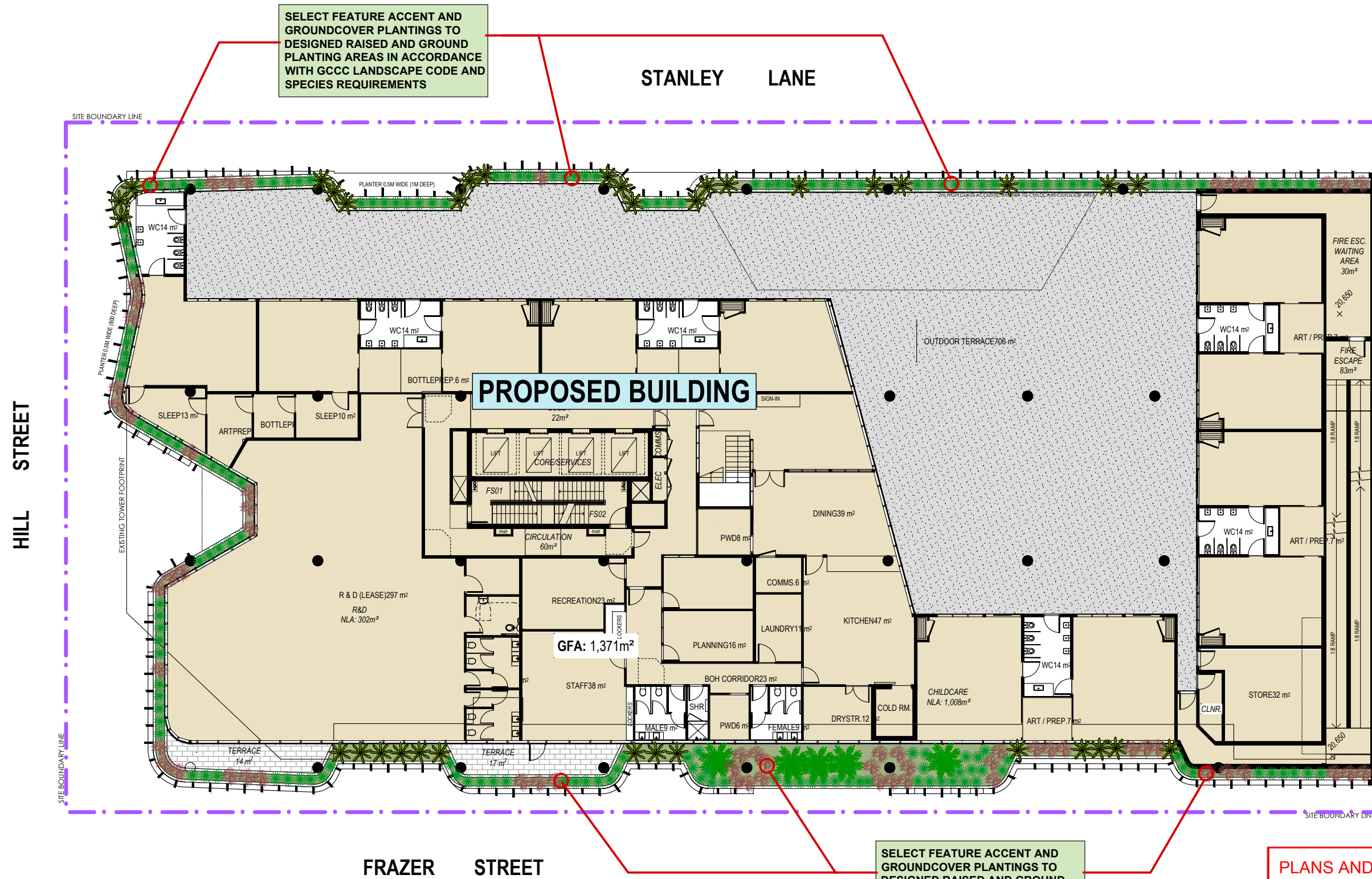
Date: FEBRUARY 2021

Scale: 1:250 @ A3

Design: NH Drawn: NH

Sheet: 03 OF 08

Issue: **B**



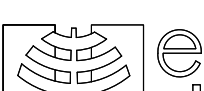





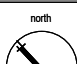
SHEET 04 - LEVEL 01 - LANDSCAPE CONCEPT PLAN - MCU APPLICATION -

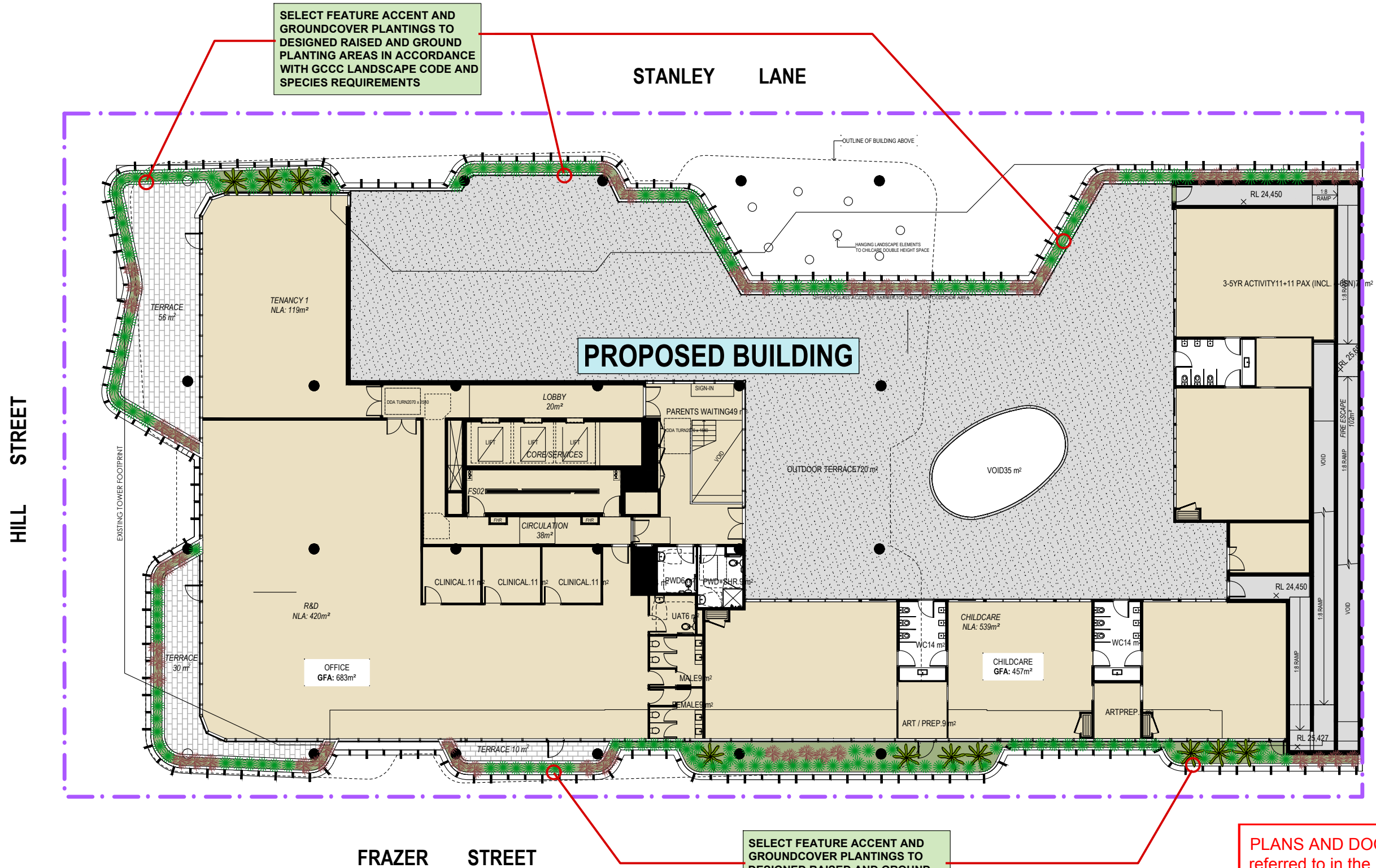
PLANS AND DOCUMENTS
referred to in the PDA
DEVELOPMENT APPROVAL

Approval no: DEV2020/1133

Date: 2-Jun-2021



	AMENDMENTS	LEGEND	 TREE PLANTING	 ACCENT PLANTING	 FOOTPATH TO ARCHITECTS DESIGN	 BOUNDARY		element design landscape architecture MASTER PLANNING • SUBDIVISIONS • COMMERCIAL DEVELOPMENTS • RESORTS • PARKLANDS • REVEGETATION • MULTI-UNITS 151 Brisbane Rd. Mooloolaba Phone 07 5444 6155 Fax 07 5444 6055 PO Box 1546, Buderim QLD 4556 admin@elementdesign.net.au	PROJECT PROXIMA , GOLD COAST HEALTH & KNOWLEDGE PRECINCT	
	<small>Issue</small> <small>Date</small> <small>Description</small>									
	A 19.06.20 ISSUE FOR REVIEW									
	B 02.02.21 REDESIGN WORKS - ISSUE FOR REVIEW									



PLANS AND DOCUMENTS referred to in the PDA DEVELOPMENT APPROVAL

Approval no: DEV2020/1133

Date: 2-Jun-2021



SHEET 05 - LEVEL 02 - LANDSCAPE CONCEPT PLAN - MCU APPLICATION -

	AMENDMENTS <table><tr><th>issue</th><th>date</th><th>description</th></tr><tr><td>A</td><td>19.06.20</td><td>ISSUE FOR REVIEW</td></tr><tr><td>B</td><td>02.02.21</td><td>REDESIGN WORKS - ISSUE FOR REVIEW</td></tr><tr><td> </td><td> </td><td> </td></tr><tr><td> </td><td> </td><td> </td></tr><tr><td> </td><td> </td><td> </td></tr></table> <p>Copyright in the whole and every part of this document belongs to ELEMENT DESIGN QLD PTY LTD and may not be used, sold, transferred, copied or reproduced in whole or in part in any manner or form or in or on any media to any person without the prior written consent of ELEMENT DESIGN QLD PTY LTD.</p>	issue	date	description	A	19.06.20	ISSUE FOR REVIEW	B	02.02.21	REDESIGN WORKS - ISSUE FOR REVIEW										LEGEND	TREE PLANTING	ACCENT PLANTING	FOOTPATH TO ARCHITECTS DESIGN	BOUNDARY
	issue	date	description																					
	A	19.06.20	ISSUE FOR REVIEW																					
	B	02.02.21	REDESIGN WORKS - ISSUE FOR REVIEW																					
SMALL FEATURE TREE PLANTINGS																								
SHRUB PLANTINGS																								

element design
landscape architecture

MASTER PLANNING • SUBDIVISIONS •
COMMERCIAL DEVELOPMENTS • RESORTS •
PARKLANDS • REVEGETATION • MULTI-UNITS

151 Brisbane Rd. Mooloolaba
Phone 07 5444 6155 Fax 07 5444 6055
PO Box 1546, Buderim QLD 4556
admin@elementdesign.net.au

PROJECT: **PROXIMA , GOLD COAST
HEALTH & KNOWLEDGE PRECINCT**

CLIENT: **EVANS LONG**

DWG TITLE: **LANDSCAPE CONCEPT PLAN**

ED 20266 MCU - 05

Date: **FEBRUARY 2021**

Scale: **1:250 @ A3**

Design: **NH** Drawn: **NH**

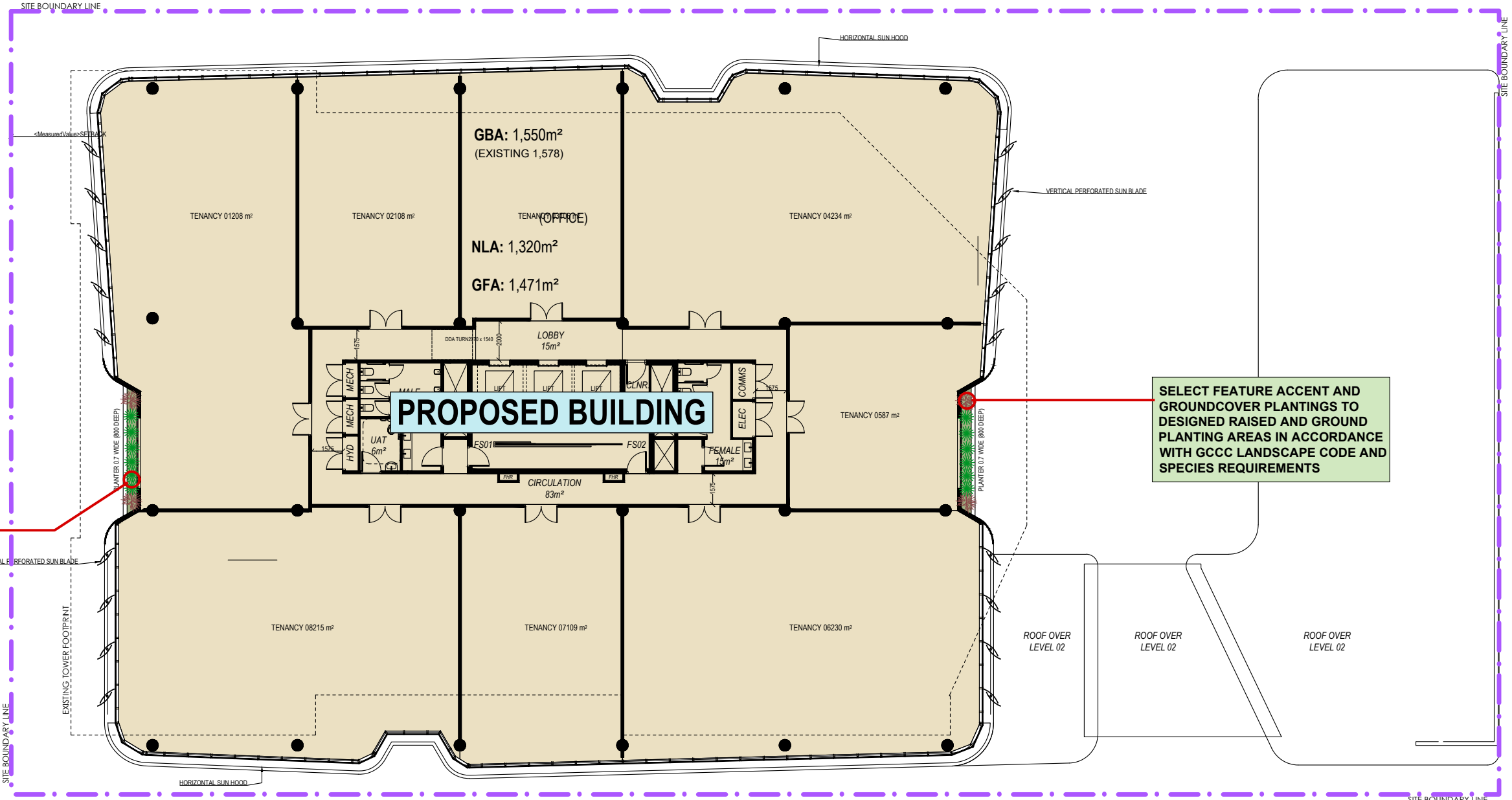
Sheet: **05 OF 08**

issue **B**

STANLEY LANE

HILL STREET

FRAZER STREET



SELECT FEATURE ACCENT AND GROUND COVER PLANTINGS TO DESIGNED RAISED AND GROUND PLANTING AREAS IN ACCORDANCE WITH GCCC LANDSCAPE CODE AND SPECIES REQUIREMENTS

SELECT FEATURE ACCENT AND GROUND COVER PLANTINGS TO DESIGNED RAISED AND GROUND PLANTING AREAS IN ACCORDANCE WITH GCCC LANDSCAPE CODE AND SPECIES REQUIREMENTS

PLANS AND DOCUMENTS referred to in the PDA DEVELOPMENT APPROVAL

Approval no: DEV2020/1133

Date: 2-Jun-2021



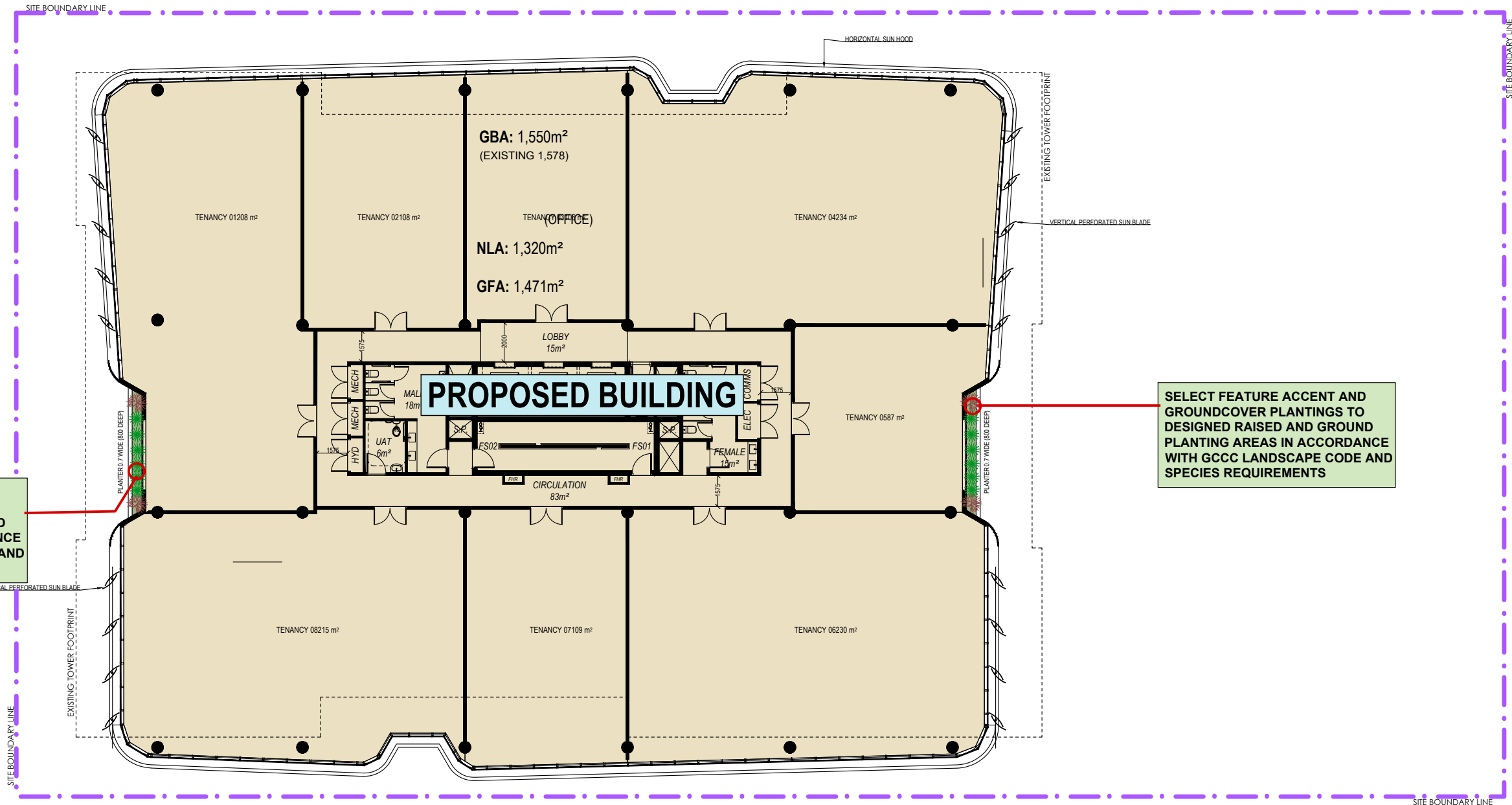
SHEET 06 - LEVEL 03 - LANDSCAPE CONCEPT PLAN - MCU APPLICATION -

	AMENDMENTS		TREE PLANTING		ACCENT PLANTING		FOOTPATH TO ARCHITECT'S DESIGN		BOUNDARY
	A 19.06.20 ISSUE FOR REVIEW		B 02.02.21 REDESIGN WORKS - ISSUE FOR REVIEW						
LEGEND			SMALL FEATURE TREE PLANTINGS		SHRUB PLANTINGS		FOOTPATH TO ARCHITECT'S DESIGN		BOUNDARY
Copyright in the whole and every part of this document belongs to ELEMENT DESIGN QLD PTY LTD and may not be used, sold, transferred, copied or reproduced in whole or in part in any manner or form or in or on any media to any person without the prior written consent of ELEMENT DESIGN QLD PTY LTD.									
		element design landscape architecture		MASTER PLANNING • SUBDIVISIONS • COMMERCIAL DEVELOPMENTS • RESORTS • PARKLANDS • REVEGETATION • MULT-UNITS		151 Brisbane Rd. Mooloolaba Phone 07 5444 6155 Fax 07 5444 6055 PO Box 1546, Buderim QLD 4556 admin@elementdesign.net.au		PROJECT PROXIMA , GOLD COAST HEALTH & KNOWLEDGE PRECINT	
		CLIENT EVANS LONG		DATE FEBRUARY 2021		Scale 1:250 @ A3		Design NH Drawn NH	
		DWG TITLE LANDSCAPE CONCEPT PLAN		Sheet 06 OF 08		ED 20266 MCU - 06		issue B	

STANLEY LANE

HILL STREET

FRAZER STREET



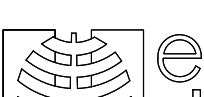



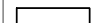

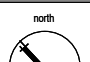

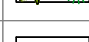
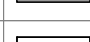
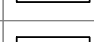

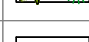
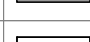
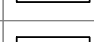

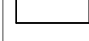
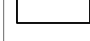
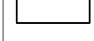

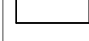
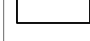
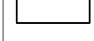

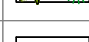
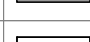
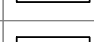

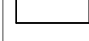
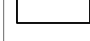
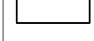
SHEET 07 - LEVEL 04-07 - LANDSCAPE CONCEPT PLAN - MCU APPLICATION -

PLANS AND DOCUMENTS
referred to in the PDA
DEVELOPMENT APPROVAL

Approval no: DEV2020/1133

Date: 2-Jun-2021



	AMENDMENTS	LEGEND	 TREE PLANTING	 ACCENT PLANTING	 FOOTPATH TO ARCHITECTS DESIGN	 BOUNDARY	 <div>element design landscape architecture</div> <div>MASTER PLANNING • SUBDIVISIONS • COMMERCIAL DEVELOPMENTS • RESORTS • PARKLANDS • REVEGETATION • MULTI-UNITS</div> <div>151 Brisbane Rd. Mooloolaba Phone 07 5444 6155 Fax 07 5444 6055 PO Box 1546, Buderim QLD 4556 admin@elementdesign.net.au</div>	<div>PROJECT PROXIMA , GOLD COAST HEALTH & KNOWLEDGE PRECINT</div> <div>CLIENT EVANS LONG</div> <div>DWG TITLE LANDSCAPE CONCEPT PLAN</div> <div>ED 20266 MCU - 07</div>	<div></div> <div>Date FEBRUARY 2021</div> <div>Scale 1:250 @ A3</div> <div>Design NH Drawn NH</div> <div>Sheet 07 OF 08</div> <div>issue B</div>																													
	<table><tr><td>Rev</td><td>Date</td><td>Description</td></tr><tr><td>A</td><td>19.06.20</td><td>ISSUE FOR REVIEW</td></tr><tr><td>B</td><td>02.02.21</td><td>REDESIGN WORKS - ISSUE FOR REVIEW</td></tr><tr><td> </td><td> </td><td> </td></tr><tr><td> </td><td> </td><td> </td></tr><tr><td> </td><td> </td><td> </td></tr><tr><td> </td><td> </td><td> </td></tr></table>		Rev	Date	Description	A				19.06.20	ISSUE FOR REVIEW	B	02.02.21	REDESIGN WORKS - ISSUE FOR REVIEW													<table><tr><td></td><td>SMALL FEATURE TREE PLANTINGS</td><td></td><td></td><td></td></tr></table>		SMALL FEATURE TREE PLANTINGS				<table><tr><td></td><td>SHRUB PLANTINGS</td><td></td><td></td><td></td></tr></table>		SHRUB PLANTINGS			
	Rev		Date	Description																																		
	A		19.06.20	ISSUE FOR REVIEW																																		
	B		02.02.21	REDESIGN WORKS - ISSUE FOR REVIEW																																		
	SMALL FEATURE TREE PLANTINGS																																					
	SHRUB PLANTINGS																																					
Copyright in the whole and every part of this document belongs to ELEMENT DESIGN QLD PTY LTD and may not be used, sold, transferred, copied or reproduced in whole or in part in any manner or form or in or on any media to any person without the prior written consent of ELEMENT DESIGN QLD PTY LTD.																																						

INDICATIVE PLANT SCHEDULE

TREE & PALM SPECIES		
Code	Botanical Name	Common Name
BAC cit	<i>Backhousia citriodora</i>	Lemon Scented Myrtle
CUP ana	<i>Cupaniopsis anacardiodes</i>	Tuckeroo
ELA eum	<i>Elaeocarpus Eumundi</i>	Eumundi
MAG LG	<i>Magnolia Little Gem</i>	Little Gem
SYZ hem	<i>Syzygium hemilampra</i>	Bush Satinash
TRI lus	<i>Tristania Luscious</i>	Luscious
XAN BP	<i>Xanthostemon Baby Penda</i>	Baby Penda

SHRUB SPECIES		
Code	Botanical Name	Common Name
ACM smi	<i>Acmena smithii</i>	Lilly Pilly
CAL 'LJ	<i>Callistemon 'Little John'</i>	Little John
DIA cae	<i>Dianella caerulea</i>	Dianella
FIC nod	<i>Ficinia nodosa</i>	Knobby Club Rush
HYM spe	<i>Hymenocallis speciosa</i>	Spider Lily
PHY mul	<i>Phyllanthus multiflora</i>	Green Waterfall
NAN nan	<i>Nandina domestica nana</i>	Dwarf Nandina
SYZ 'Cas'	<i>Syzygium 'Cascade'</i>	Weeping Lily Pilly
SYZ res	<i>Syzygium Resilience</i>	Resilience
STR reg	<i>Stelitzia reginae</i>	Bird of Paradise

GROUNDCOVER SPECIES		
Code	Botanical Name	Common Name
ALL ci	<i>Allocasuarina Cousin It</i>	Cousin It
AUS dul	<i>Austromyrtus dulcis</i>	Midgim
CAR gla	<i>Carpobrotus glaucescens</i>	Pigs Face
LIR var	<i>Liriope variagata</i>	Variagated Liriope
LIR EG	<i>Liriope Evergreen Giant</i>	Evergreen Giant
TRA Tri	<i>Trachelospermum jasminoides 'Tricolour'</i>	Tricolor Jasmine

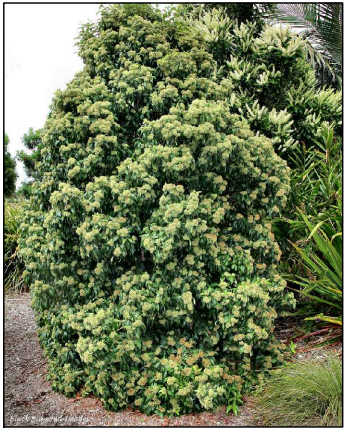
TREES



Syzygium hemilampra



Cupaniopsis anacardiodes



Backhousia citriodora



Elaeocarpus Eumundi



Tristania "Luscious"

SHRUBS & GROUNDCOVERS



Syzygium "Resilience"



Phyllanthus multiflora



Callistemon 'Great Balls of Fire'



Ficinia nodosa



Myoroum ellipitum'



Trachelospermum jasminoides
'Tricolour'



Casuarina 'Cousin It'



Dietes grandiflora



Dwarf Nandina nana



Philodendron Xanadu



Corbyline fruitcosa 'Rubra'



Red Bromiliad

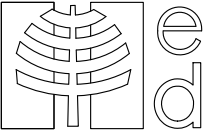
NOTE:
NOT ALL SPECIES SHOWN WILL BE NECESSARILY
UTILISED & NEW SPECIES COULD BE INCLUDED INTO
FINAL DESIGN AT OP.WORKS DOCUMENTATION STAGE

PLANS AND DOCUMENTS
referred to in the PDA
DEVELOPMENT APPROVAL

Approval no: DEV2020/1133
Date: 2-Jun-2021



SHEET 08 - PHOTO MONTAGE -



AMENDMENTS

Issue	Date	Description
A	19.06.20	ISSUE FOR REVIEW
B	02.02.21	REDESIGN WORKS - ISSUE FOR REVIEW

Copyright in the whole and every part of this document belongs to
ELEMENT DESIGN QLD PTY LTD and may not be used, sold,
transferred, copied or reproduced in whole or in part in any manner or
form or in or on any media to any person without the prior written
consent of ELEMENT DESIGN QLD PTY LTD.



element design
landscape architecture

MASTER PLANNING • SUBDIVISIONS •
COMMERCIAL DEVELOPMENTS • RESORTS •
PARKLANDS • REVEGETATION • MULTI-UNITS

151 Brisbane Rd. Mooloolaba
Phone 07 5444 6155 Fax 07 5444 6055
PO Box 1546, Buderim QLD 4556
admin@elementdesign.net.au

PROJECT PROXIMA , GOLD COAST
HEALTH & KNOWLEDGE PRECINT

CLIENT EVANS LONG

DWG TITLE PHOTO MONTAGE PLAN

ED 20266 MCU - 08

Date FEBRUARY 2021

Scale NO TO SCALE

Design NH Drawn NH

Sheet 08 OF 08

issue B