

THRIVE: NIRIMBA - COMMUNITY FACILITY

Aura Land Lease Community (Stockland)
Central Village (Precinct 10)

SITE AREA: 6229.34 m²
PLOT RATIO: 0.31

SCHEMATIC DESIGN DRAWING LIST		
Sheet Number	Sheet Name	Current Revision
A0000	COVER SHEET	1
A0001	CLUBHOUSE SITE PLAN	1
A0010	SHADOW STUDIES - SUMMER	1
A0011	SHADOW STUDIES - WINTER	1
A1000	GROUND FLOOR - GA FLOOR PLAN	1
A1021	CONFIGURATION 1 - EVERYDAY MODE	1
A1040	GROUND FLOOR FINISHES PLAN	1
A1050	ROOF PLAN	1
A1500	GROUND FLOOR - REFLECTED CEILING PLAN	1
A1600	CLUBHOUSE - ELEVATIONS & SECTIONS	1
A1601	CLUBHOUSE - ELEVATIONS & SECTIONS	1

PLANS AND DOCUMENTS
referred to in the PDA
DEVELOPMENT APPROVAL

Approval no: DEV2019/1082
Date: 4 FEB 2021



SCHEMATIC DESIGN

NOT FOR CONSTRUCTION

THE USE OF CAD BACKGROUND FILES IS FOR INFORMATION ONLY.
FILE MUST BE READ IN CONJUNCTION WITH FINAL PDF FORMAT
ISSUED DRAWING SHEETS

THE ARCHITECT IS NOT RESPONSIBLE FOR THE ACCURACY,
COMPLETENESS OR ANY CONTAMINATION OF
ELECTRONICALLY TRANSMITTED DATA



PERSPECTIVE -
CLUBHOUSE ARRIVAL



PERSPECTIVE -
EASTERN ELEVATION



30 Commercial Rd 6 Middlemiss St
Newstead QLD Lavender Bay NSW
4006 Australia 2060 Australia
07 3252 1188 02 9003 0633
ABN 63 145 153 215 ABN 74 613 313 009

www.dcbstudio.com
info@dcbstudio.com

Nominated Architect Richard Rizzali
QLD# 2885 NSW# 8853 ACT#2546

SCHEMATIC
DESIGN

CAD DISCLAIMER
ISSUED DRAWINGS TAKE PRECEDENCE OVER CAD
EXPORTS. READ DIGITAL FILES IN CONJUNCTION WITH
ISSUED DRAWINGS. VERIFY DIMENSIONS ON SITE PRIOR TO
PROCEEDING. FIGURED DIMENSIONS TAKE PRECEDENCE
OVER SCALE.
DRAWINGS MAY NOT BE COPIED, DISTRIBUTED OR
REPRODUCED WITHOUT THE WRITTEN PERMISSION OF THE
ARCHITECT.

Client:
STOCKLAND
Project:
THRIVE: NIRIMBA
Address:
NIRIMBA, QLD
Project Number:
STO011

Orientation

Rev.	Date	Amendment	By	Att.
1	20/08/27	FOR INFORMATION	MS	JC/CT

Drawn: MS
Approved: RR

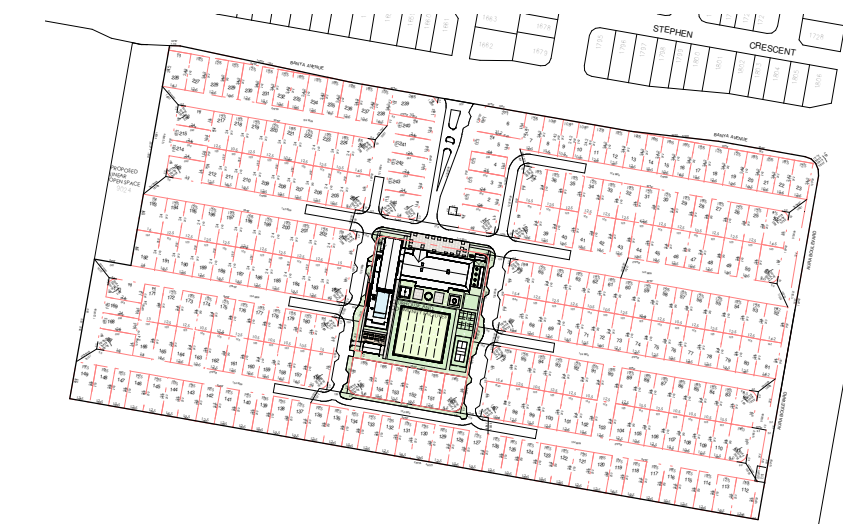
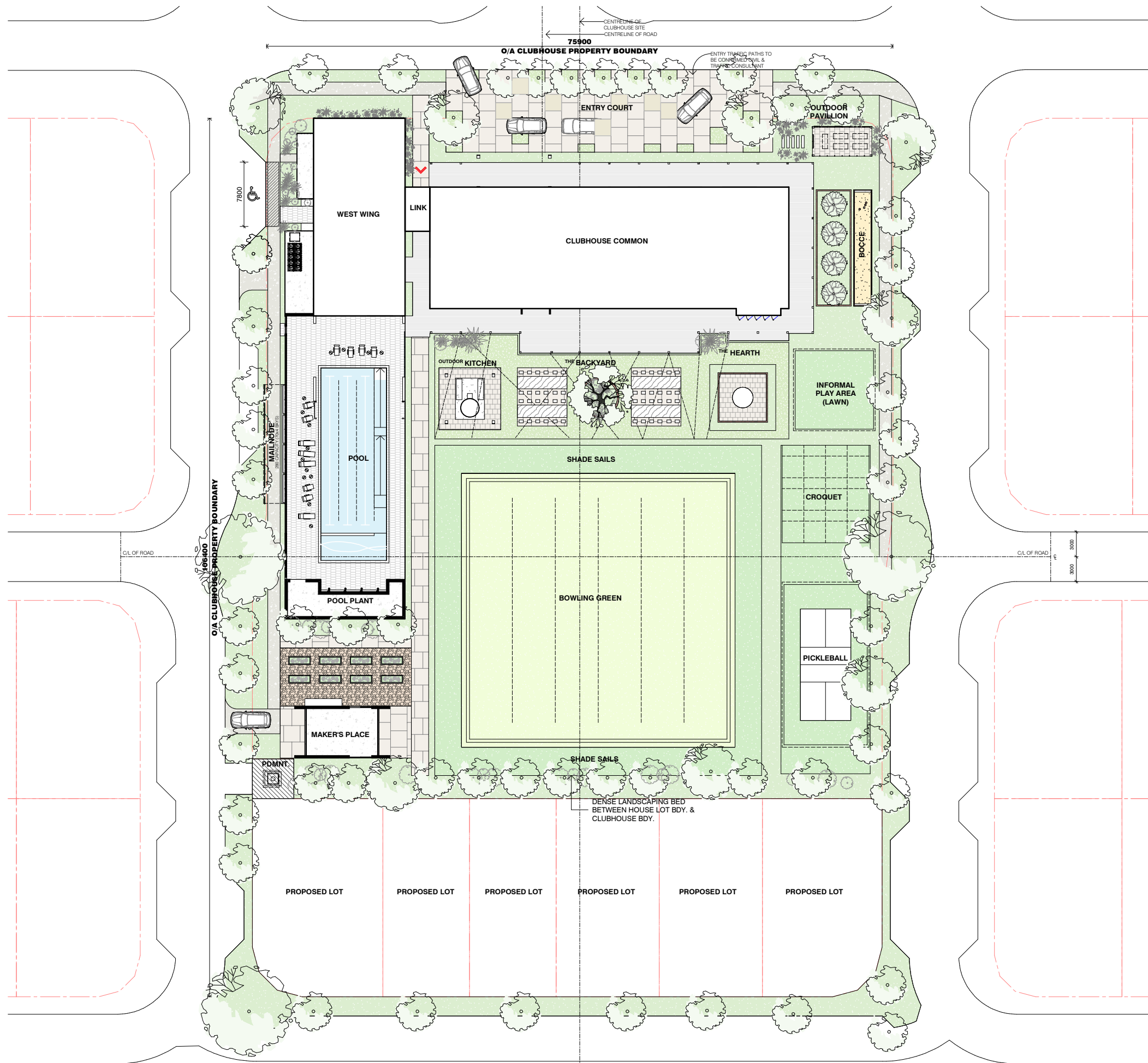
A3 Scale:

COVER SHEET

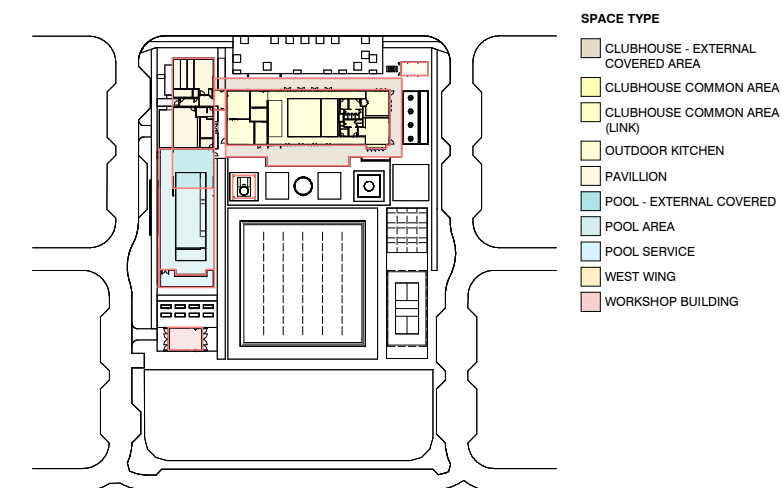
A0000

Revision: 1

4/09/2020 2:19:31 PM

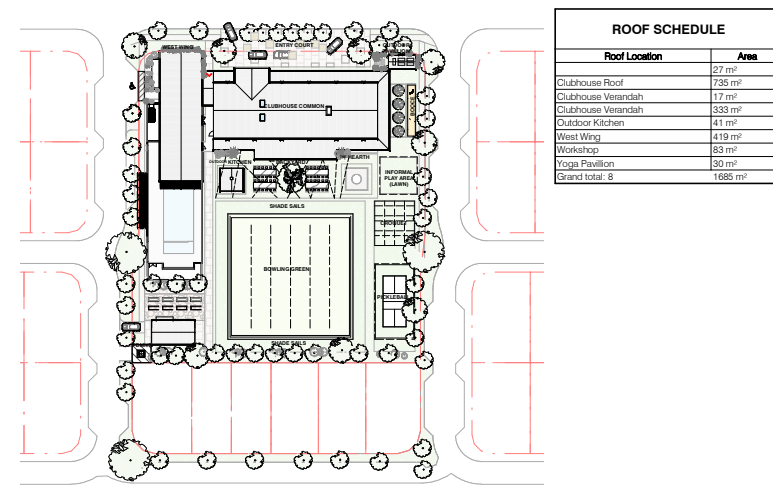


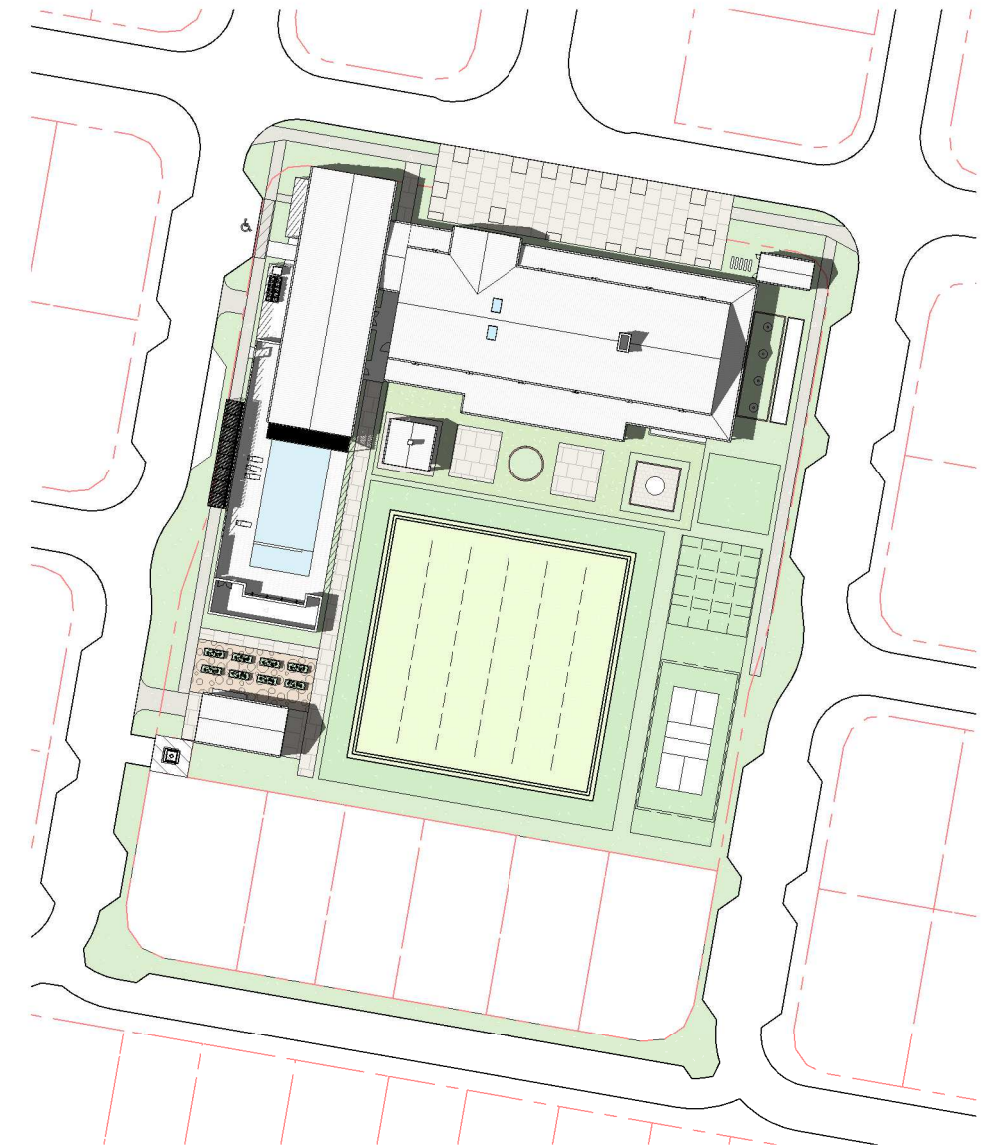
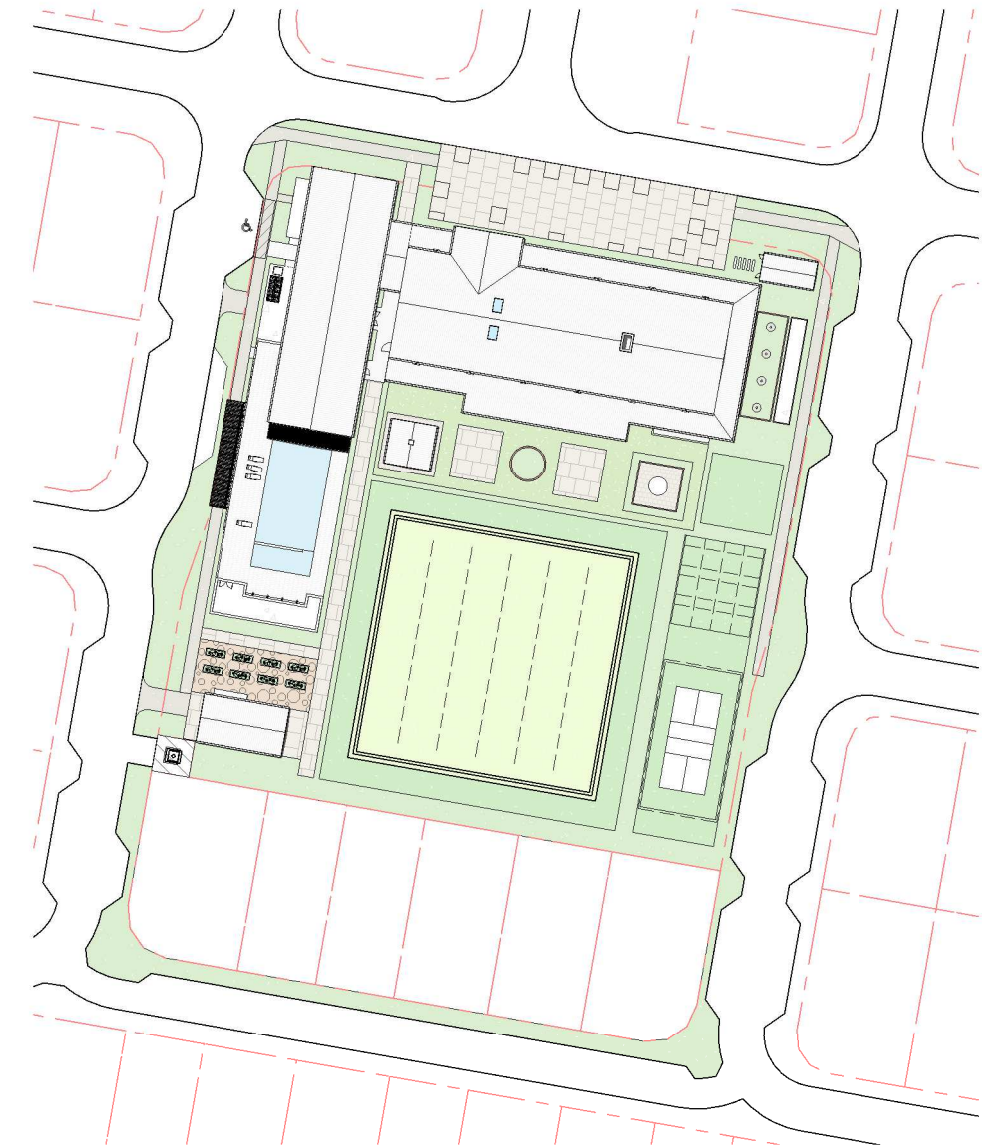
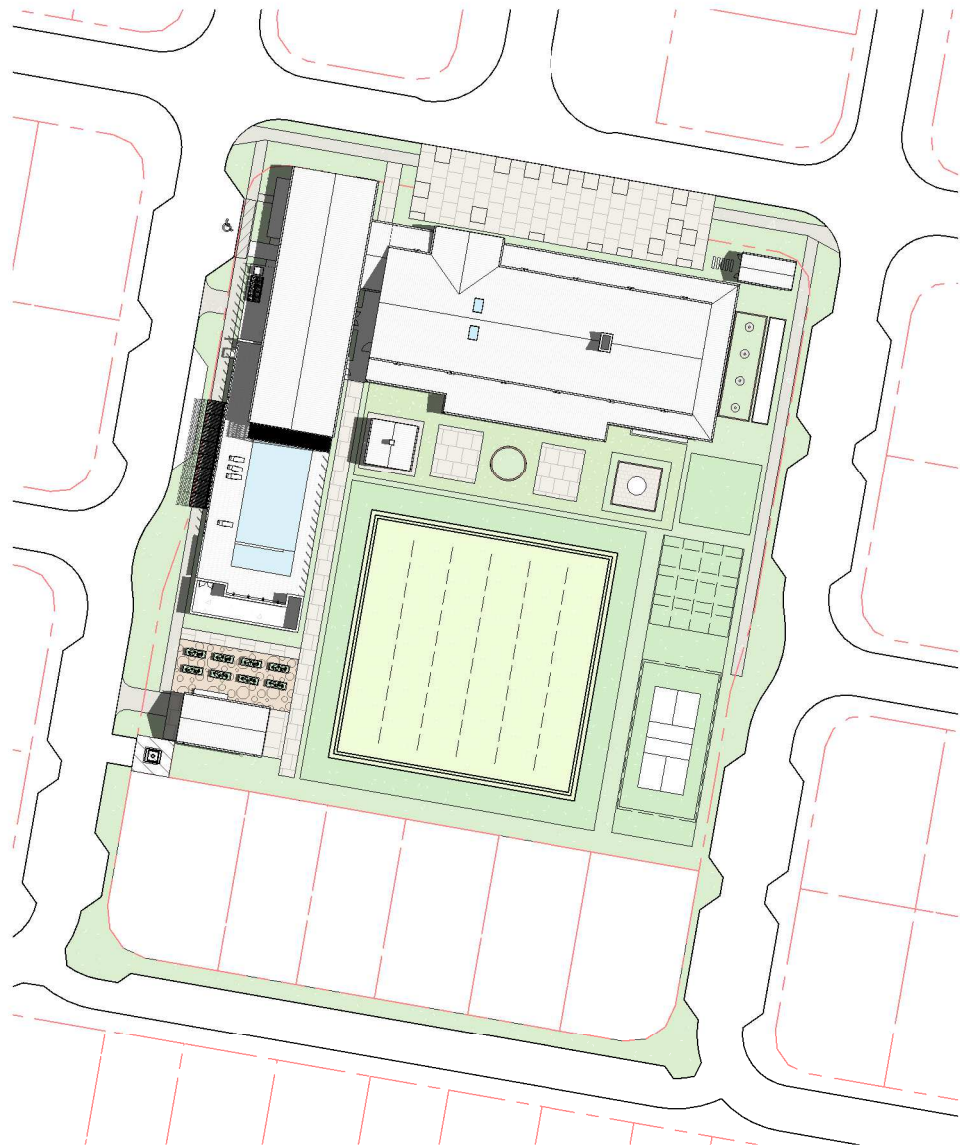
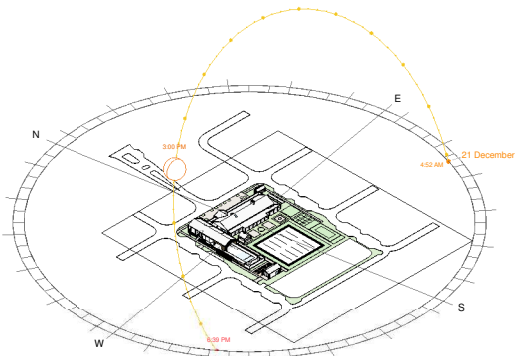
2 AURA LOCALITY PLAN - THRIVE (TRUE NORTH)
SCALE: 1 : 2500



3 AREA SUMMARY

CLUBHOUSE AREA SUMMARY		
BUILDING		AREA
CLUBHOUSE - EXTERNAL COVERED AREA		380 m²
CLUBHOUSE COMMON AREA		644 m²
CLUBHOUSE COMMON AREA (LINK)		16 m²
OUTDOOR KITCHEN		36 m²
PAVILLION		26 m²
POOL - EXTERNAL COVERED		116 m²
POOL AREA		360 m²
POOL SERVICE		58 m²
WEST WING		256 m²
WORKSHOP BUILDING		54 m²
		1816 m²





1

SUMMER - 9am

SCALE: 1 : 1000

2

SUMMER - 12pm

SCALE: 1 : 1000

3

SUMMER- 3pm

SCALE: 1 : 1000

DC8
STUDIO

30 Commercial Rd 6 Middlemiss St
Newstead QLD 4006 Australia
07 3252 1188 02 9003 0633
ABN 63 145 153 215 ABN 74 613 313 009

www.dcbstudio.com
info@dcbstudio.com

Nominated Architect Richard Rizzali
QLD# 2885 NSW# 8853 ACT#2546

SCHEMATIC DESIGN

CAD DISCLAIMER
ISSUED DRAWINGS TAKE PRECEDENCE OVER CAD
EXPORTS. READ DIGITAL FILES IN CONJUNCTION WITH
ISSUED DRAWINGS. VERIFY DIMENSIONS ON SITE PRIOR TO
PROCEEDING. FIGURED DIMENSIONS TAKE PRECEDENCE
OVER SCALE.

DRAWINGS MAY NOT BE COPIED, DISTRIBUTED OR
REPRODUCED WITHOUT THE WRITTEN PERMISSION OF THE
ARCHITECT.

Client:
STOCKLAND
Project:
THRIVE: NIRIMBA
Address:
NIRIMBA, QLD
Project Number:
STO011

Orientation



TRUE
NORTH



PROJECT
NORTH

Rev.	Date	Amendment	By	Att.
1	20/08/27	FOR INFORMATION	MS	JC/CT

SHADOW STUDIES - SUMMER

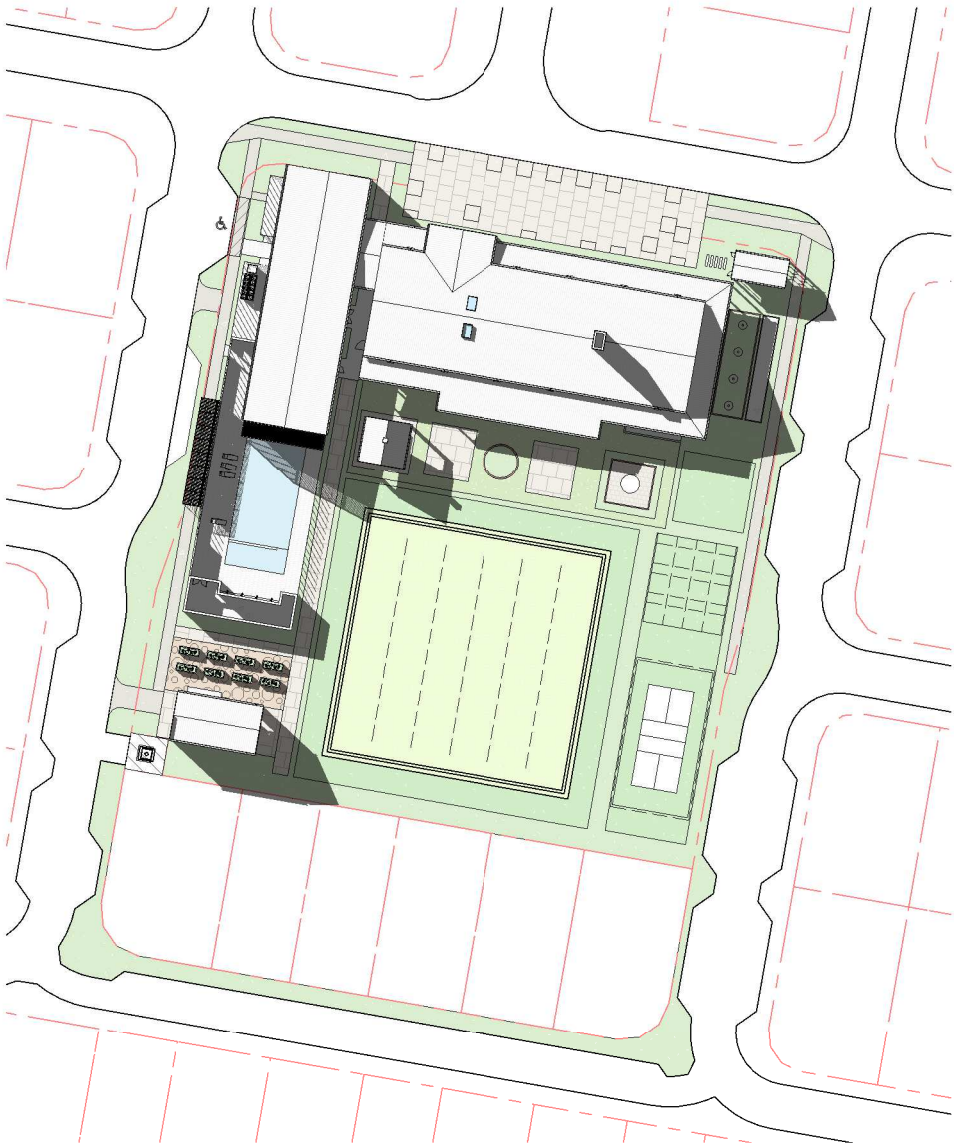
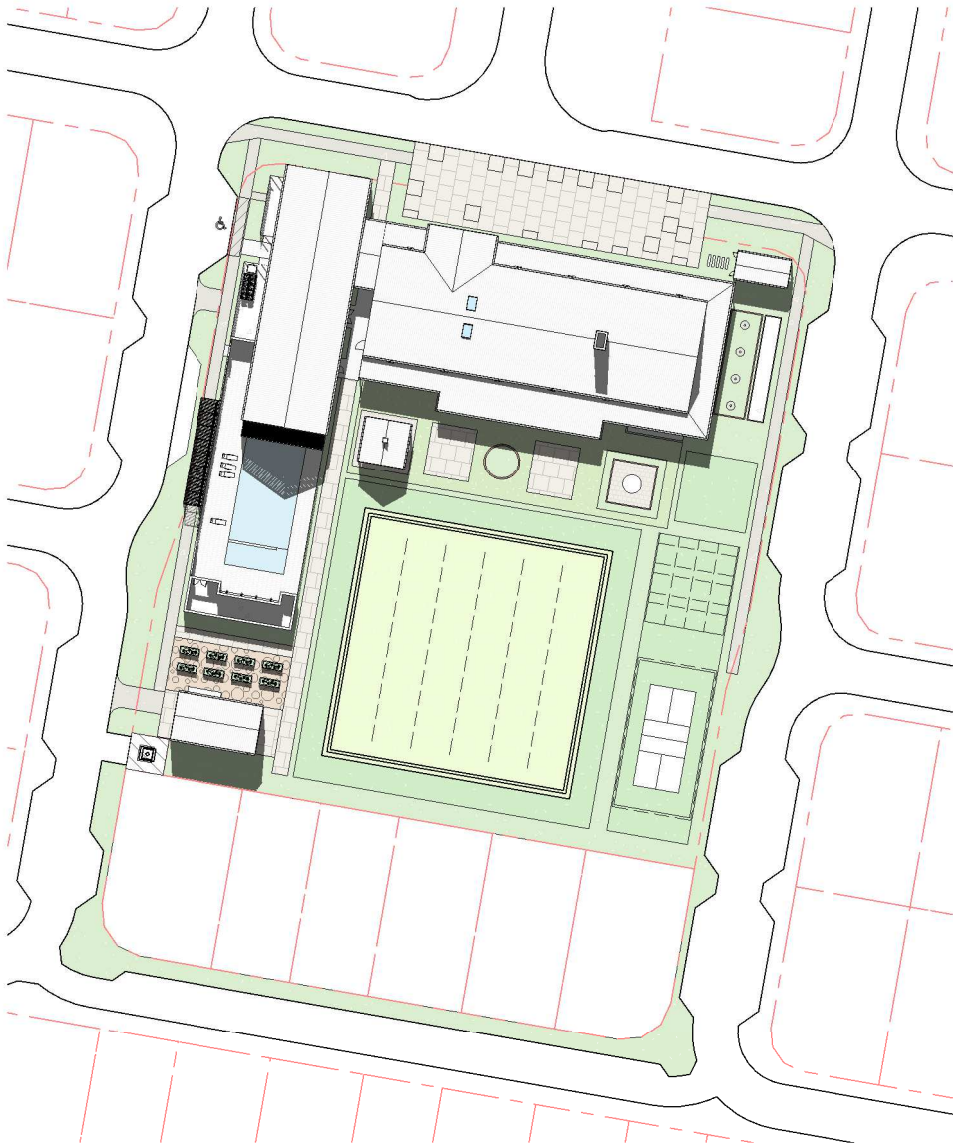
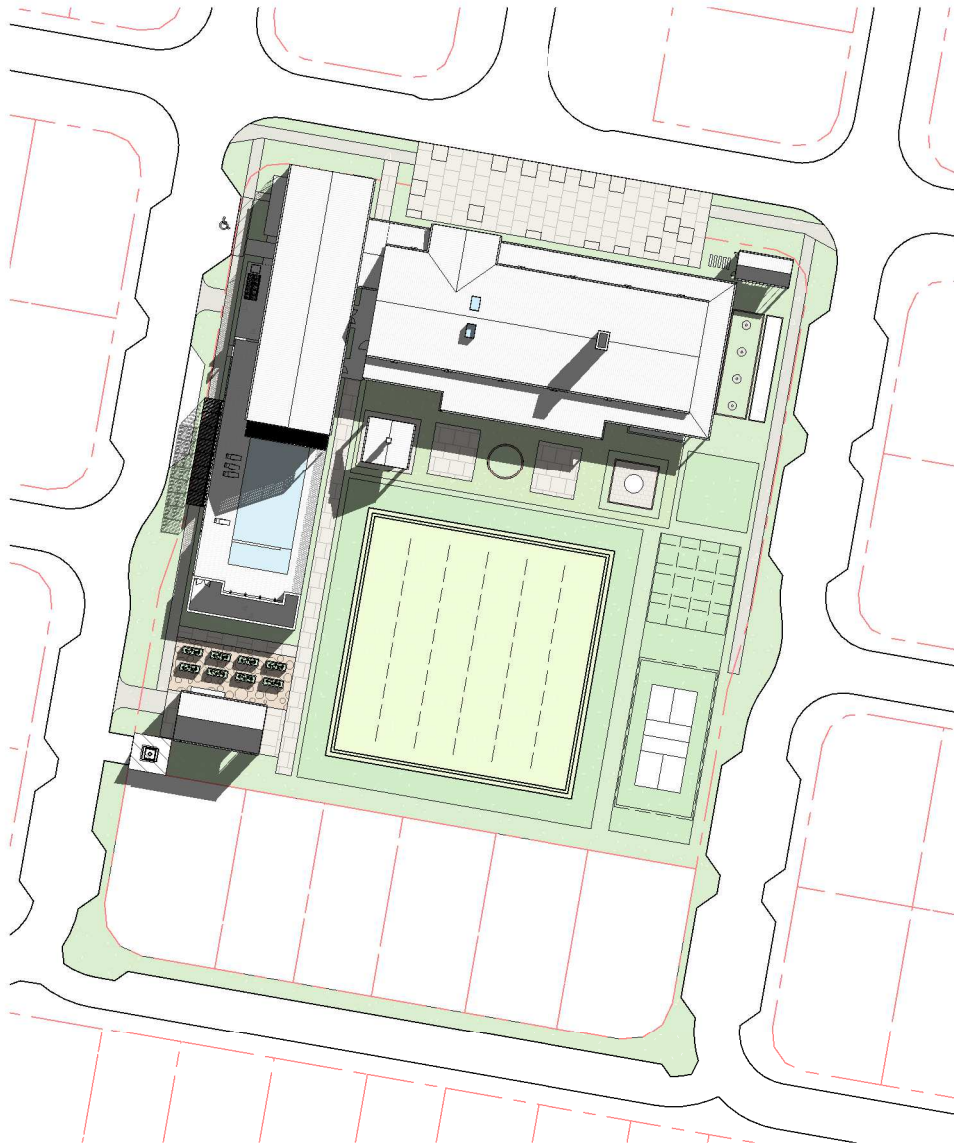
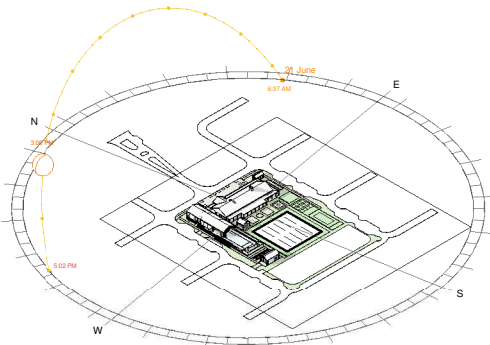
Drawn: MS
Approved: RR

A3 Scale: 1 : 1000

A0010

Revision: 1

4/09/2020 2:19:34 PM



1

WINTER - 9am
SCALE: 1 : 1000

2

WINTER - 12pm
SCALE: 1 : 1000

3

WINTER - 3pm
SCALE: 1 : 1000

DC8
STUDIO

30 Commercial Rd 6 Middlemiss St
Newstead QLD 4006 Australia
07 3252 1188 02 9003 0633
ABN 63 145 153 215 ABN 74 613 313 009

www.dcsstudio.com
info@dcsstudio.com

Nominated Architect Richard Rizzalli
QLD# 2885 NSW# 8853 ACT#2546

SCHEMATIC
DESIGN

CAD DISCLAIMER
ISSUED DRAWINGS TAKE PRECEDENCE OVER CAD
EXPORTS. READ DIGITAL FILES IN CONJUNCTION WITH
ISSUED DRAWINGS. VERIFY DIMENSIONS ON SITE PRIOR TO
PROCEEDING. FIGURED DIMENSIONS TAKE PRECEDENCE
OVER SCALE.

DRAWINGS MAY NOT BE COPIED, DISTRIBUTED OR
REPRODUCED WITHOUT THE WRITTEN PERMISSION OF THE
ARCHITECT.

Client:
STOCKLAND
Project:
THRIVE: NIRIMBA
Address:
NIRIMBA, QLD
Project Number:
STO011

Orientation



TRUE
NORTH



PROJECT
NORTH

Rev.	Date	Amendment	By	Att.
1	20/08/27	FOR INFORMATION	MS	JC/CT

Drawn: MS
Approved: RR

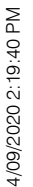
A3 Scale: 1 : 1000

SHADOW STUDIES - WINTER

A0011

Revision: 1

4/09/2020 2:19:37 PM



EVERYDAY MODE

INTERNAL
COUCHES: (2) 8 PERSONS
TABLES: (12) 60 PERSONS
KITCHEN: 9 PERSONS

TOTAL 85 PERSONS

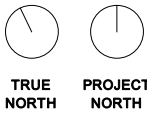
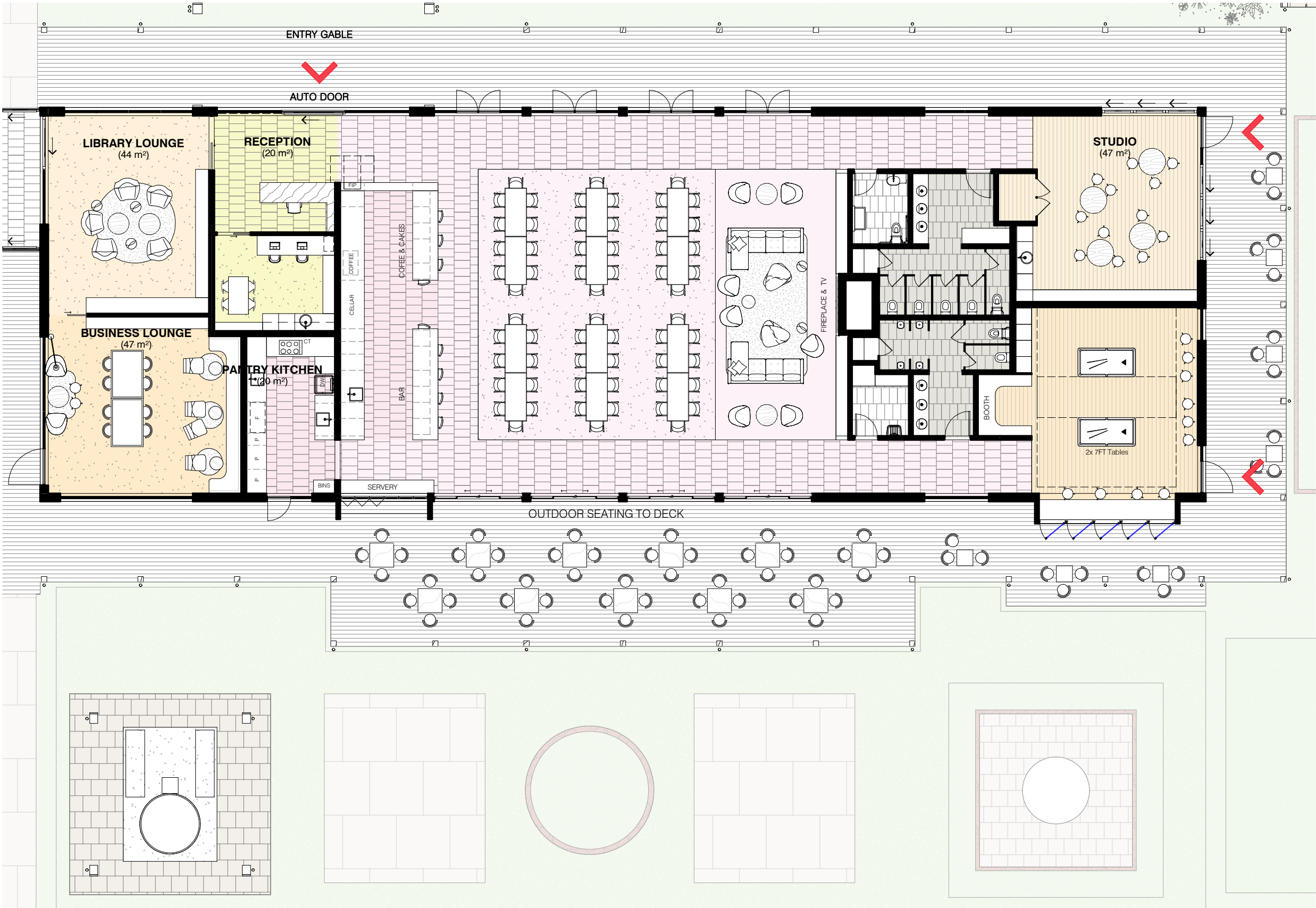
EXTERNAL
4-SEAT DECK TABLES: (11) 44 PERSONS
3-SEAT DECK TABLES: (7) 21 PERSONS
BACKYARD TABLES: (4) 48 PERSONS

GROSS TOTAL 198 PERSONS

NOT COUNTED:
FURNITURE INDICATED IN BILLIARDS & CRAFT

244 HOUSES at 1.6 PERSONS PER
HOUSEHOLD: 391 RESIDENTS APX.

- 50% OF TOTAL RESIDENTS



Rev.	Date	Amendment	By	Att.
1	20/08/27	FOR INFORMATION	MS	JC/CT

Drawn: MS
Approved: RR

A3 Scale: 1 : 150

FINISHES LEGEND

FINISH/MATERIALS TAG REFERENCE
REFER FF&E SCHEDULE FOR FURTHER DETAIL

FINISH **TIMBER**
TYPE 01

FLOOR FINISHES

TILE

CONCRETE

RUBBER

TIMBER
(COMPOSITE)

VINYL

CARPET

SCHEMATIC DESIGN

NOT FOR CONSTRUCTION

THE USE OF CAD BACKGROUND FILES IS FOR INFORMATION ONLY.
FILE MUST BE READ IN CONJUNCTION WITH FINAL PDF FORMAT
ISSUED DRAWING SHEETS.

THE ARCHITECT IS NOT RESPONSIBLE FOR THE ACCURACY,
COMPLETENESS OR ANY CONTAMINATION OF
ELECTRONICALLY TRANSMITTED DATA

DC8
STUDIO

30 Commercial Rd 6 Middlemiss St
Newstead QLD 4006 Australia
07 3252 1188
ABN 63 145 153 215

Lavender Bay NSW 2060 Australia
02 9003 0633
ABN 74 613 313 009

www.dc8studio.com
info@dc8studio.com

Nominated Architect Richard Rizzali
QLD# 2885 NSW# 8853 ACT#2546

SCHEMATIC
DESIGN

CAD DISCLAIMER
ISSUED DRAWINGS TAKE PRECEDENCE OVER CAD
EXPORTS. READ DIGITAL FILES IN CONJUNCTION WITH
ISSUED DRAWINGS. VERIFY DIMENSIONS ON SITE PRIOR TO
PROCEEDING. FIGURED DIMENSIONS TAKE PRECEDENCE
OVER SCALE.

DRAWINGS MAY NOT BE COPIED, DISTRIBUTED OR
REPRODUCED WITHOUT THE WRITTEN PERMISSION OF THE
ARCHITECT.

Client:
STOCKLAND
Project:
THRIVE: NIRIMBA
Address:
NIRIMBA, QLD
Project Number:
STO011

SCALE - 1:200@A3

Orientation

Rev.	Date	Amendment	By	Att.
1	20/08/27	FOR INFORMATION	MS	JC/CT

Drawn: MS
Approved: RR

A3 Scale: 1 : 200

GROUND FLOOR FINISHES
PLAN

A1040

Revision: 1

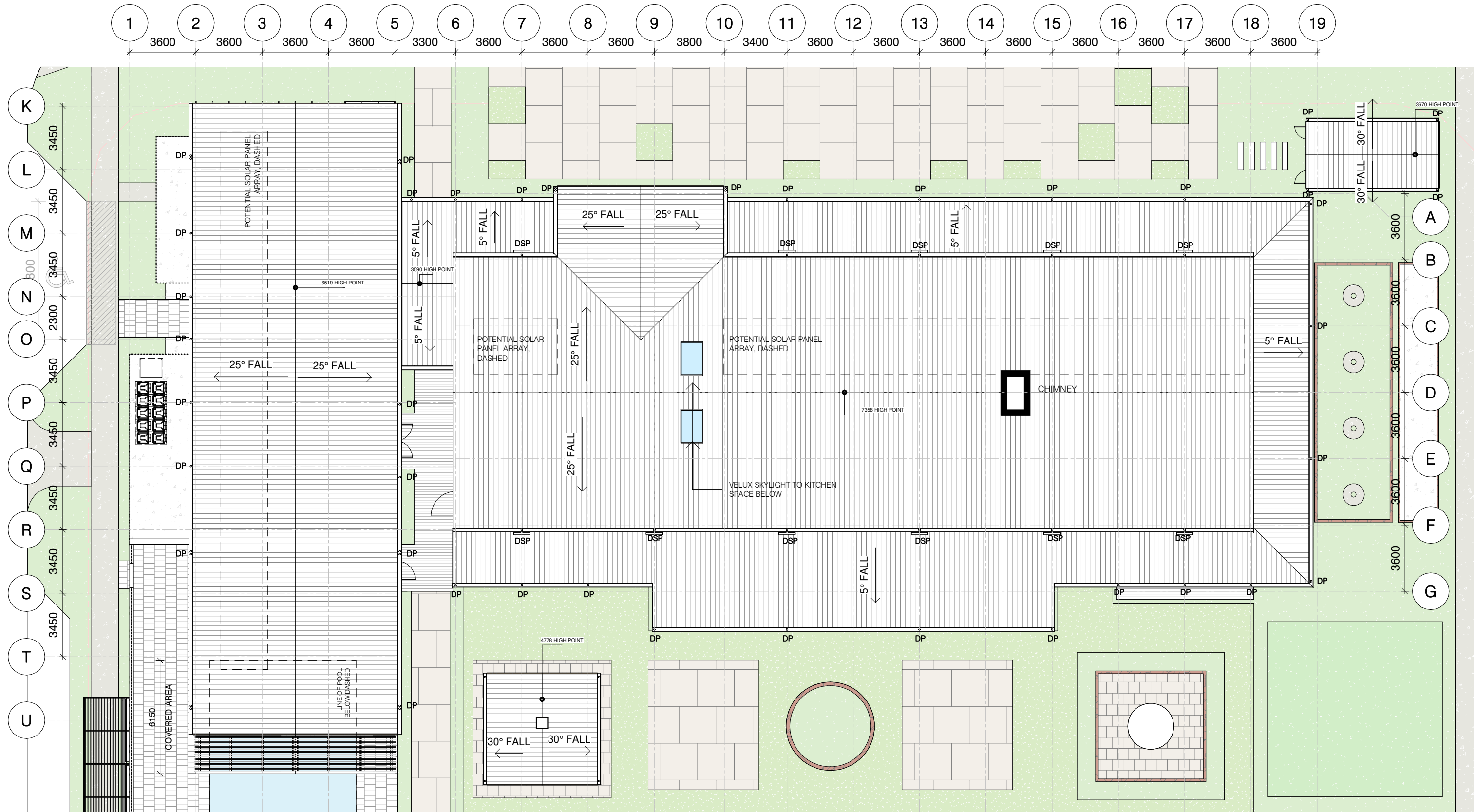
4/09/2020 2:19:44 PM

SCHEMATIC DESIGN

NOT FOR CONSTRUCTION

THE USE OF CAD BACKGROUND FILES IS FOR INFORMATION ONLY.
FILE MUST BE READ IN CONJUNCTION WITH FINAL PDF FORMAT
ISSUED DRAWING SHEETS.

THE ARCHITECT IS NOT RESPONSIBLE FOR THE ACCURACY,
COMPLETENESS OR ANY CONTAMINATION OF
ELECTRONICALLY TRANSMITTED DATA



4/09/2020 2:19:45 PM

DC8
STUDIO

30 Commercial Rd	6 Middlemiss St
Newstead QLD	Lavender Bay NSW
4006 Australia	2060 Australia
07 3252 1188	02 9003 0633
ABN 63 145 153 215	ABN 74 613 313 009

www.dc8studio.com
info@dc8studio.com

Nominated Architect Richard Rizzalli
QLD# 2885 NSW# 8653 ACT#2546

SCHEMATIC DESIGN

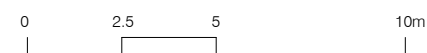
CAD DISCLAIMER

ISSUED DRAWINGS TAKE PRECEDENCE OVER CAD EXPORTS. READ DIGITAL FILES IN CONJUNCTION WITH ISSUED DRAWINGS. VERIFY DIMENSIONS ON SITE PRIOR TO PROCEEDING. FIGURED DIMENSIONS TAKE PRECEDENCE OVER SCALE.

DRAWINGS MAY NOT BE COPIED, DISTRIBUTED OR REPRODUCED WITHOUT THE WRITTEN PERMISSION OF THE ARCHITECT.

Client:
STOCKLAND
Project:
THRIVE: NIRIMBA
Address:
NIRIMBA, QLD
Project Number:
STO011

SCALE - 1:200@A3



Orientation



TRUE

PROJECT

Rev.	Date	Amendment	By	Att.
1	20/08/27	FOR INFORMATION	MS	JC/CT

Drawn: MS
Approved: RR

A3 Scale: 1 : 200

ROOF PLAN

A1050

Revision: 1

LEGEND - REFLECTED CEILING PLAN

HEIGHT
MATERIAL
& FINISH

2400
PB-PB#

CEILING HEIGHT/MATERIALS TAG
REFERENCE
DENOTES HEIGHT ABOVE FFL.
REFER FF&E SCHEDULE FOR DETAILS

ABBREVIATIONS

E-AP
ACP
FC
FC-VJ
MR-PB
PB
SCK

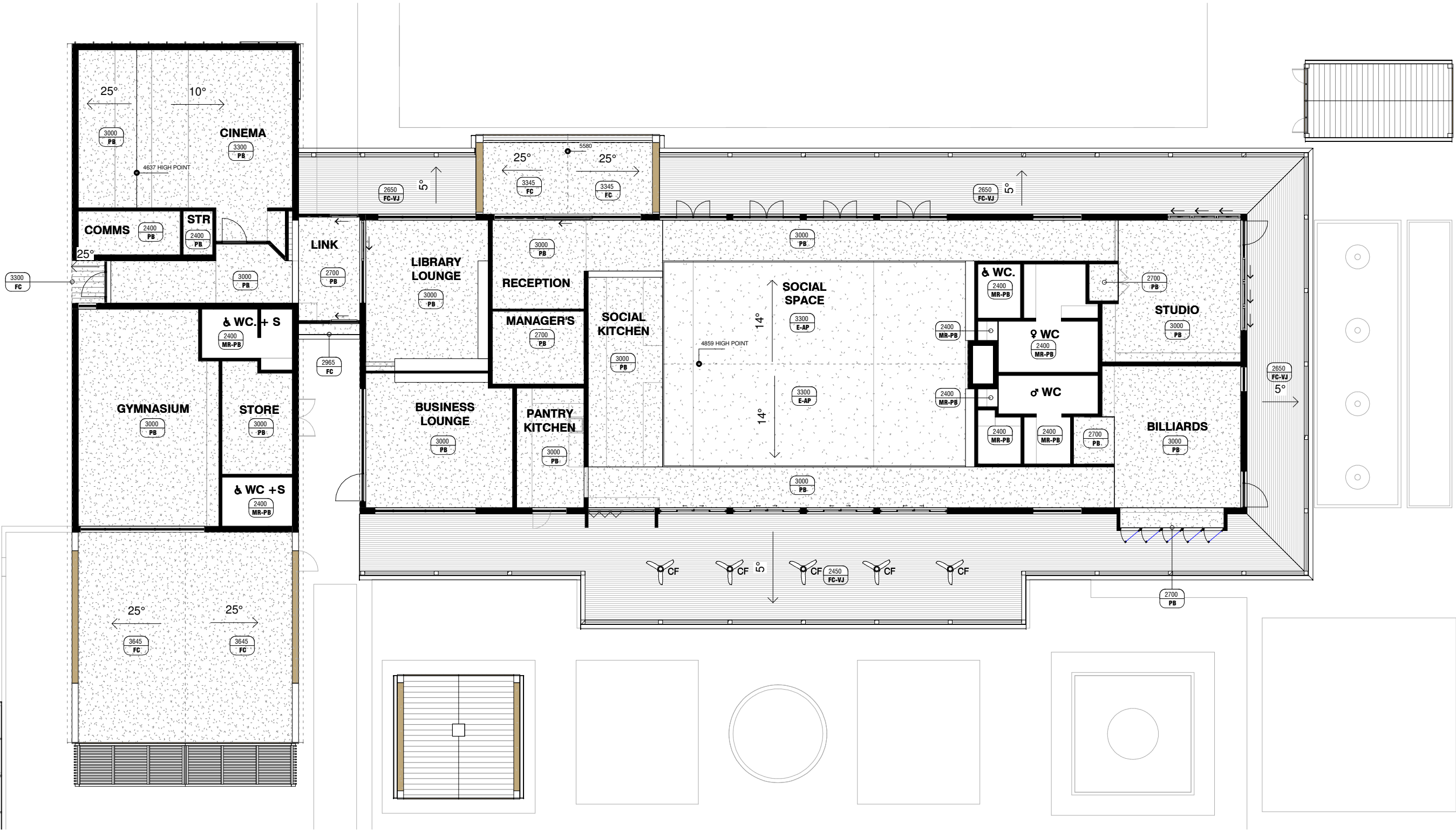
SELECTED ACOUSTIC PANEL
ACCESS PANEL
FIBRE CEMENT SHEETING
FIBRE CEMENT VJ SHEET PANEL
MOISTURE RESISTANT PLASTERBOARD
PLASTERBOARD
SOUNDCEK

SCHEMATIC DESIGN

NOT FOR CONSTRUCTION

THE USE OF CAD BACKGROUND FILES IS FOR INFORMATION ONLY.
FILE MUST BE READ IN CONJUNCTION WITH FINAL PDF FORMAT
ISSUED DRAWING SHEETS.

THE ARCHITECT IS NOT RESPONSIBLE FOR THE ACCURACY,
COMPLETENESS OR ANY CONTAMINATION OF
ELECTRONICALLY TRANSMITTED DATA

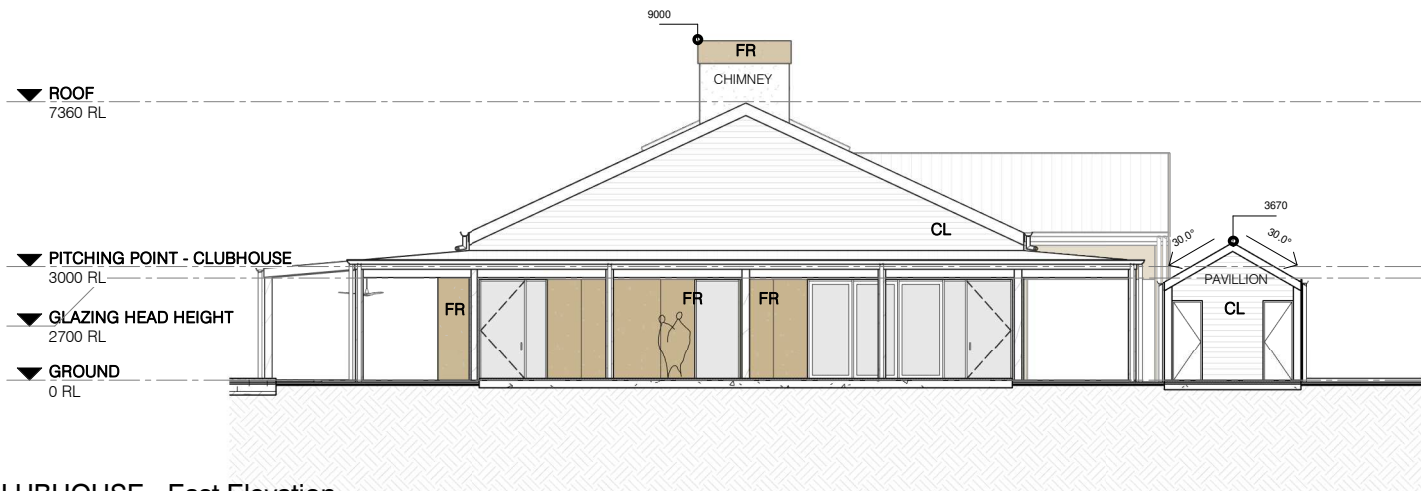


MATERIALS LEGEND - ELEVATIONS

ABBREVIATIONS

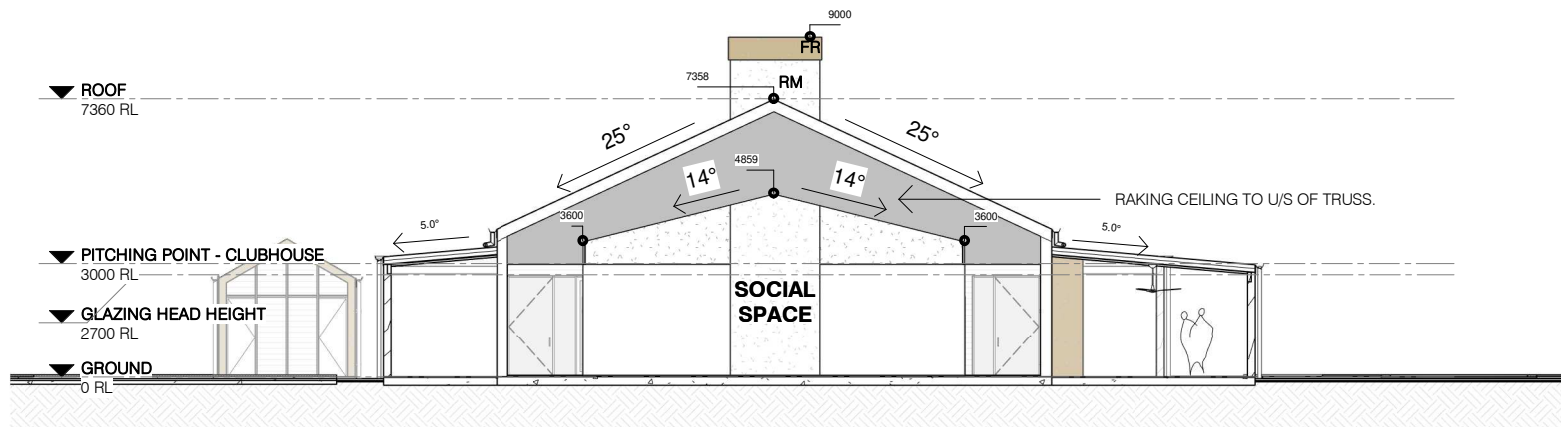
RF	LYSAGHT ENSEAM (SHALE GREY - MATT)
CL	SHIPLAP PROFILE TIMBER CLADDING (PAINTED WHITE)
FR	ROCKCOTE CERANO RENDER (PAINTED)
RM	MASONRY CEMENT STUCCO RENDER (PAINTED)
PF	PERFORATED METAL SHEET (POWDERCOAT WHITE)
EP	EXPRESSED PORTAL

- SELECTED MATERIAL DEFINED IN MATERIAL SCHEDULE.
ELEVATIONS & SECTIONS TO BE READ IN CONJUNCTION
WITH FINISHES SCHEDULE.
- ALL GUTTERS, DOWNPIPES AND FLASHINGS
COLOURBOND SURFMIST



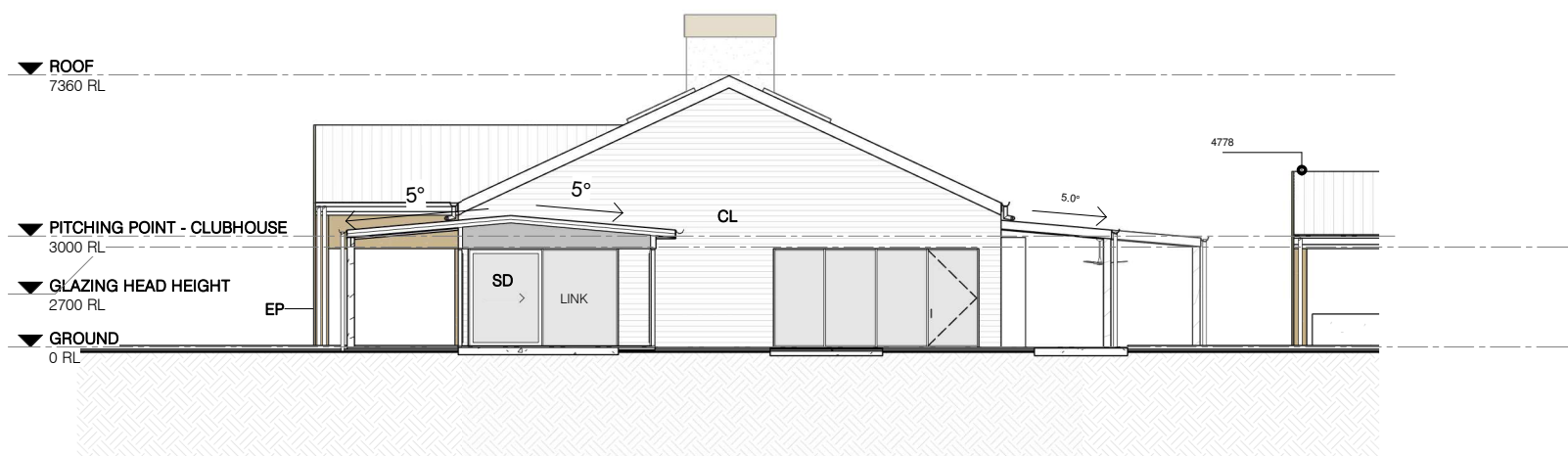
1 CLUBHOUSE - East Elevation

SCALE: 1 : 200



2 CLUBHOUSE - Section A-A

SCALE: 1 : 200



3 CLUBHOUSE - West Elevation

SCALE: 1 : 200

Rev.	Date	Amendment	By	Att.
1	20/08/27	FOR INFORMATION	MS	JC/CT

Drawn: MS
Approved: RR

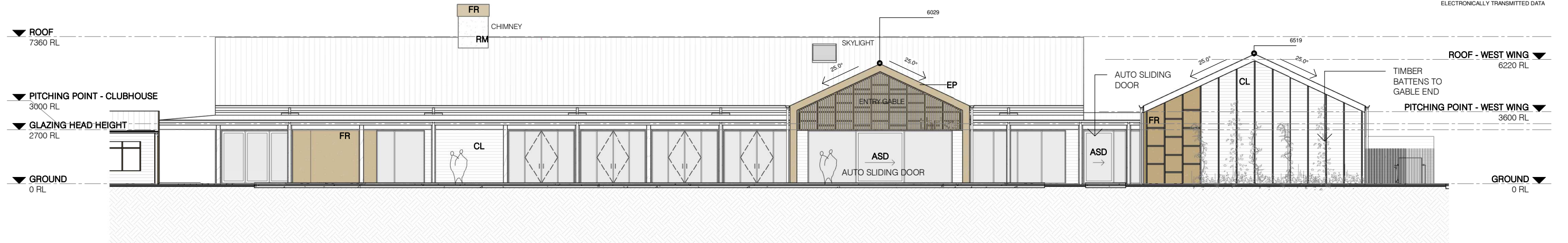
A3 Scale: 1 : 200

SCHEMATIC DESIGN

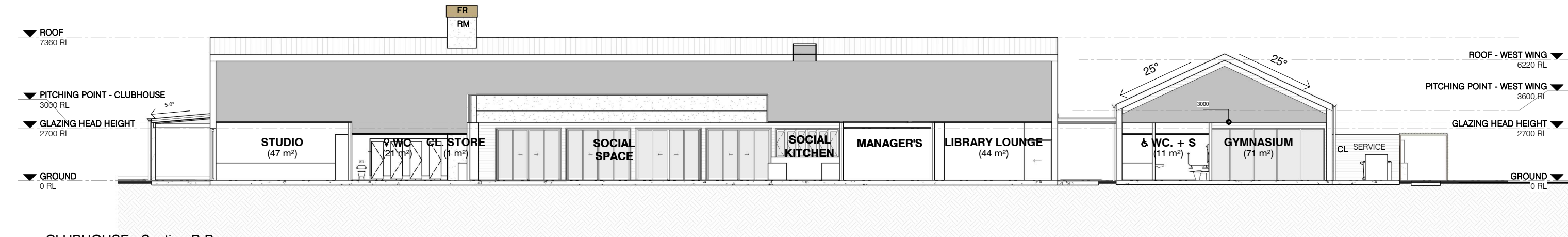
NOT FOR CONSTRUCTION

THE USE OF CAD BACKGROUND FILES IS FOR INFORMATION ONLY.
FILE MUST BE READ IN CONJUNCTION WITH FINAL PDF FORMAT
ISSUED DRAWING SHEETS.

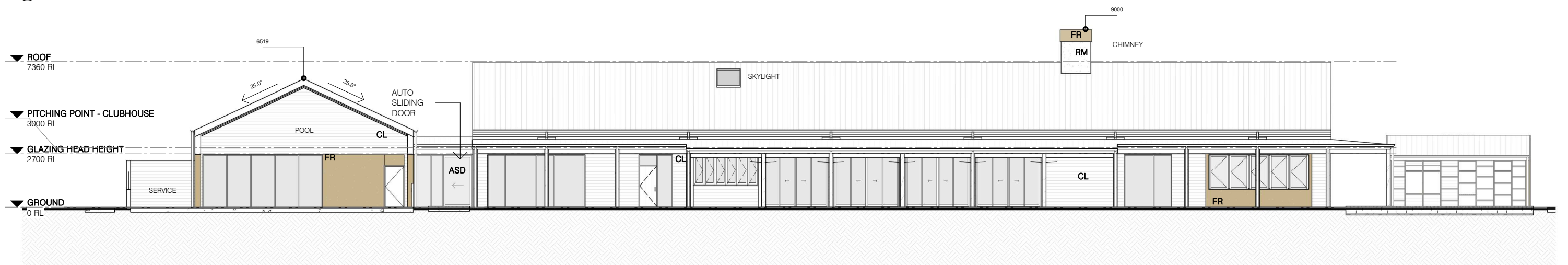
THE ARCHITECT IS NOT RESPONSIBLE FOR THE ACCURACY,
COMPLETENESS OR ANY CONTAMINATION OF
ELECTRONICALLY TRANSMITTED DATA



1 CLUBHOUSE - North Elevation
SCALE: 1 : 200



2 CLUBHOUSE - Section B-B
SCALE: 1 : 200



3 CLUBHOUSE - South Elevation
SCALE: 1 : 200

DC8
STUDIO

30 Commercial Rd 6 Middlemiss St
Newstead QLD 4006 Australia
07 3252 1188
ABN 63 145 153 215

Lavender Bay NSW 2060 Australia
02 9003 0633
ABN 74 613 313 009

www.dc8studio.com
info@dc8studio.com

Nominated Architect Richard Rizzalli
QLD# 2885 NSW# 8853 ACT#2546

SCHEMATIC DESIGN

CAD DISCLAIMER
ISSUED DRAWINGS TAKE PRECEDENCE OVER CAD
EXPORTS. READ DIGITAL FILES IN CONJUNCTION WITH
ISSUED DRAWINGS. VERIFY DIMENSIONS ON SITE PRIOR TO
PROCEEDING. FIGURED DIMENSIONS TAKE PRECEDENCE
OVER SCALE.

DRAWINGS MAY NOT BE COPIED, DISTRIBUTED OR
REPRODUCED WITHOUT THE WRITTEN PERMISSION OF THE
ARCHITECT.

Client:
STOCKLAND
Project:
THRIVE: NIRIMBA
Address:
NIRIMBA, QLD
Project Number:
STO011

SCALE - 1:200@A3

0 2.5 5 10m

Orientation

Rev.	Date	Amendment	By	Att.
1	20/08/27	FOR INFORMATION	MS	JC/CT

CLUBHOUSE - ELEVATIONS & SECTIONS

Drawn: MS
Approved: RR

A3 Scale: 1 : 200

A1601

Revision: 1

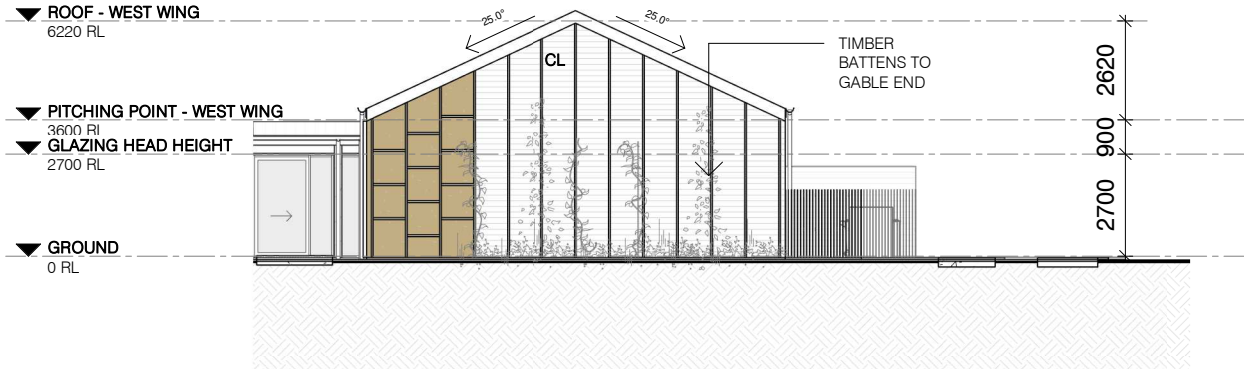
4/09/2020 2:19:50 PM

MATERIALS LEGEND - ELEVATIONS

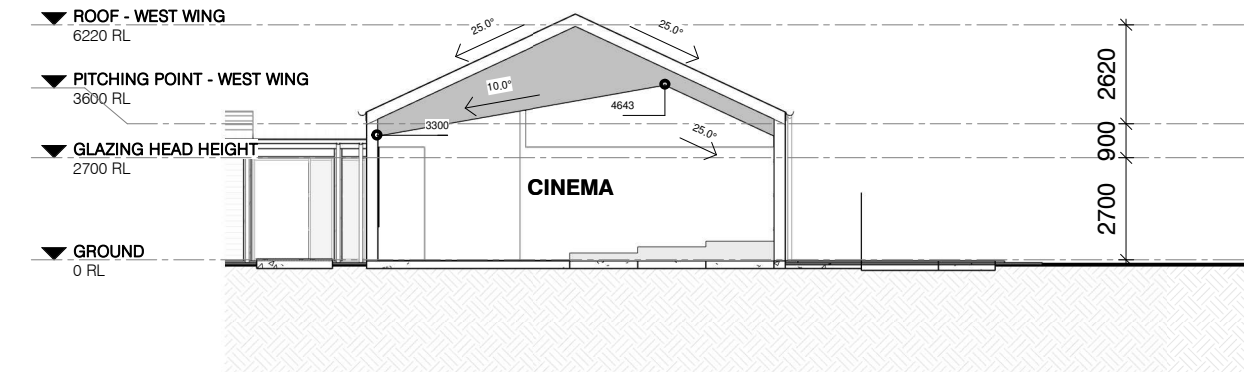
ABBREVIATIONS

- RF LYSAGHT ENSEAM (SHALE GREY - MATT)
CL SHIPLAP PROFILE TIMBER CLADDING (PAINTED WHITE)
FR ROCKCOTE CERANO RENDER (PAINTED)
RM MASONRY CEMENT STUCCO RENDER (PAINTED)
PF PERFORATED METAL SHEET (POWDERCOAT WHITE)
EP EXPRESSED PORTAL

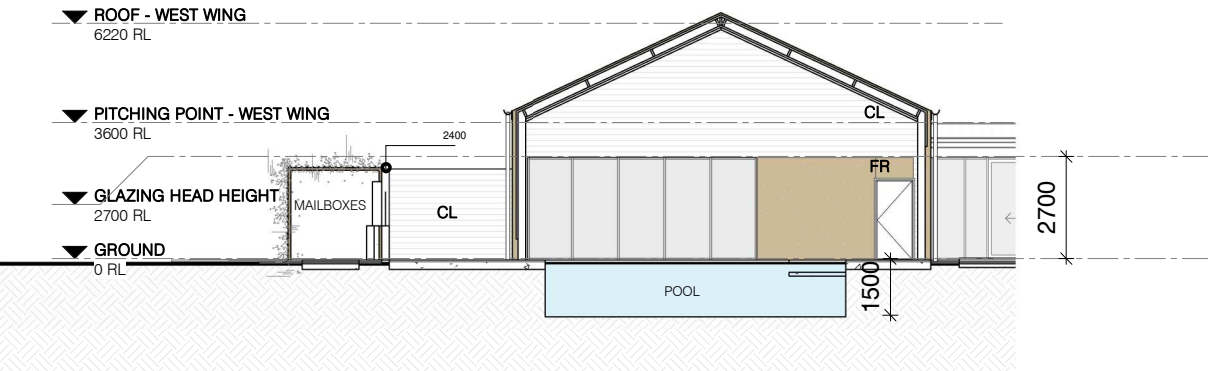
- SELECTED MATERIAL DEFINED IN MATERIAL SCHEDULE.
ELEVATIONS & SECTIONS TO BE READ IN CONJUNCTION
WITH FINISHES SCHEDULE.
- ALL GUTTERS, DOWNPIPES AND FLASHINGS
COLOURBOND SURFMIST



1 WEST WING - North Elevation
SCALE: 1 : 200



2 WEST WING - Cinema Section
SCALE: 1 : 200



3 WEST WING - South Elevation
SCALE: 1 : 200

SCHEMATIC DESIGN

NOT FOR CONSTRUCTION

THE USE OF CAD BACKGROUND FILES IS FOR INFORMATION ONLY.
FILE MUST BE READ IN CONJUNCTION WITH FINAL PDF FORMAT
ISSUED DRAWING SHEETS.

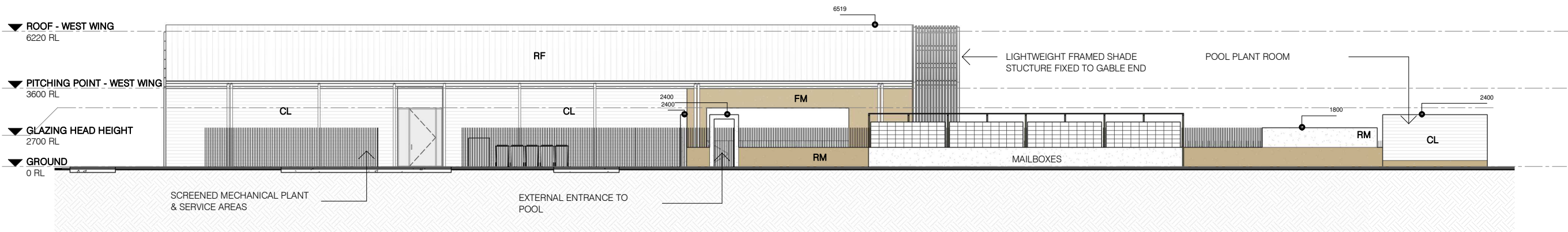
THE ARCHITECT IS NOT RESPONSIBLE FOR THE ACCURACY,
COMPLETENESS OR ANY CONTAMINATION OF
ELECTRONICALLY TRANSMITTED DATA

MATERIALS LEGEND - ELEVATIONS

ABBREVIATIONS

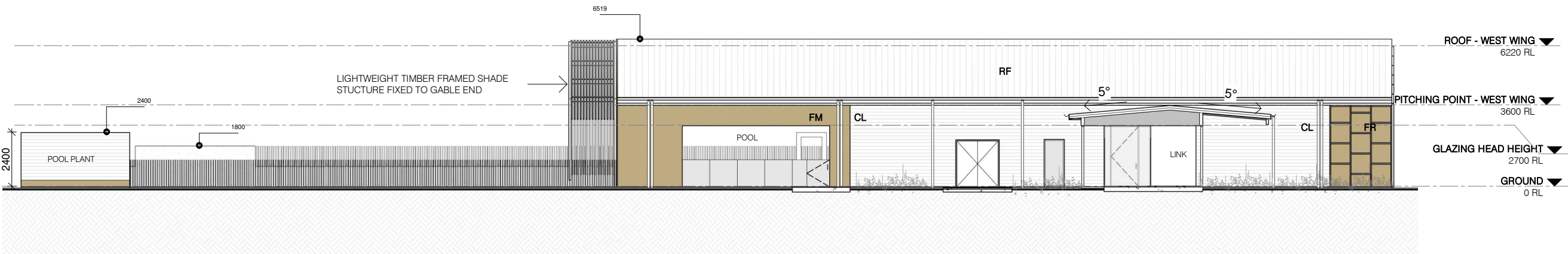
- RF LYSAGHT ENSEAM (SHALE GREY - MATT)
CL SHIPLAP PROFILE TIMBER CLADDING (PAINTED WHITE)
FR ROCKCOTE CERANO RENDER (PAINTED)
RM MASONRY CEMENT STUCCO RENDER (PAINTED)
PF PERFORATED METAL SHEET (POWDERCOAT WHITE)
EP EXPRESSED PORTAL

- SELECTED MATERIAL DEFINED IN MATERIAL SCHEDULE.
ELEVATIONS & SECTIONS TO BE READ IN CONJUNCTION
WITH FINISHES SCHEDULE.
- ALL GUTTERS, DOWNPIPES AND FLASHINGS
COLOURBOND SURFMIST



1 WEST WING - West Elevation

SCALE: 1 : 200



2 WEST WING - East Elevation

SCALE: 1 : 200

DC8
STUDIO

30 Commercial Rd 6 Middlemiss St
Newstead QLD 4006 Australia
07 3252 1188
ABN 63 145 153 215

Lavender Bay NSW 2060 Australia
02 9003 0633
ABN 74 613 313 009

www.dcbstudio.com
info@dcbstudio.com

Nominated Architect Richard Rizzali
QLD# 2885 NSW# 8853 ACT#2546

SCHEMATIC
DESIGN

CAD DISCLAIMER
ISSUED DRAWINGS TAKE PRECEDENCE OVER CAD
EXPORTS. READ DIGITAL FILES IN CONJUNCTION WITH
ISSUED DRAWINGS. VERIFY DIMENSIONS ON SITE PRIOR TO
PROCEEDING. FIGURED DIMENSIONS TAKE PRECEDENCE
OVER SCALE.

DRAWINGS MAY NOT BE COPIED, DISTRIBUTED OR
REPRODUCED WITHOUT THE WRITTEN PERMISSION OF THE
ARCHITECT.

Client:
STOCKLAND
Project:
THRIVE: NIRIMBA
Address:
NIRIMBA, QLD
Project Number:
STO011

SCALE - 1:200@A3

0 2.5 5 10m

Orientation

Rev. Date Amendment By Att.

Drawn: Author
Approved: Checker

A3 Scale: 1 : 200

WEST WING - ELEVATIONS &
SECTIONS

A1603

Revision: _____

4/09/2020 2:19:52 PM

SCHEMATIC DESIGN

NOT FOR CONSTRUCTION

THE USE OF CAD BACKGROUND FILES IS FOR INFORMATION ONLY.
FILE MUST BE READ IN CONJUNCTION WITH FINAL PDF FORMAT
ISSUED DRAWING SHEETS.

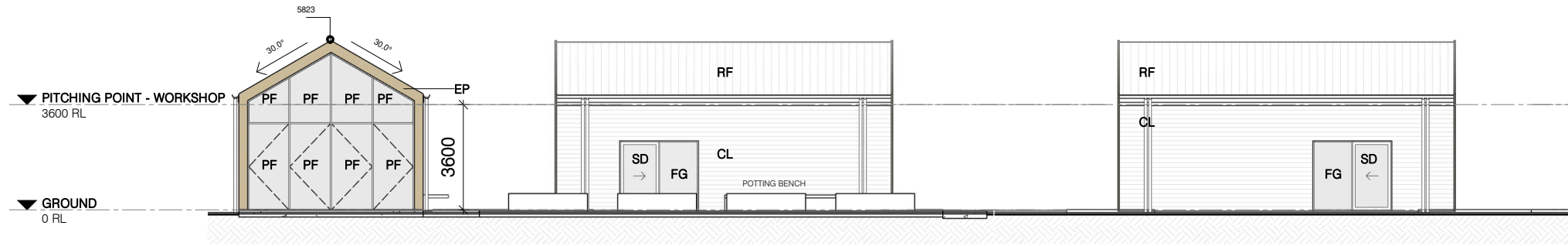
THE ARCHITECT IS NOT RESPONSIBLE FOR THE ACCURACY,
COMPLETENESS OR ANY CONTAMINATION OF
ELECTRONICALLY TRANSMITTED DATA

MATERIALS LEGEND - ELEVATIONS

ABBREVIATIONS

RF LYSAGHT ENSEAM (SHALE GREY - MATT)
CL SHIPLAP PROFILE TIMBER CLADDING (PAINTED WHITE)
FR ROCKCOTE CERANO RENDER (PAINTED)
RM MASONRY CEMENT STUCCO RENDER (PAINTED)
PF PERFORATED METAL SHEET (POWDERCOAT WHITE)
EP EXPRESSED PORTAL

- SELECTED MATERIAL DEFINED IN MATERIAL SCHEDULE.
ELEVATIONS & SECTIONS TO BE READ IN CONJUNCTION
WITH FINISHES SCHEDULE.
- ALL GUTTERS, DOWNPIPES AND FLASHINGS
COLOURBOND SURFMIST

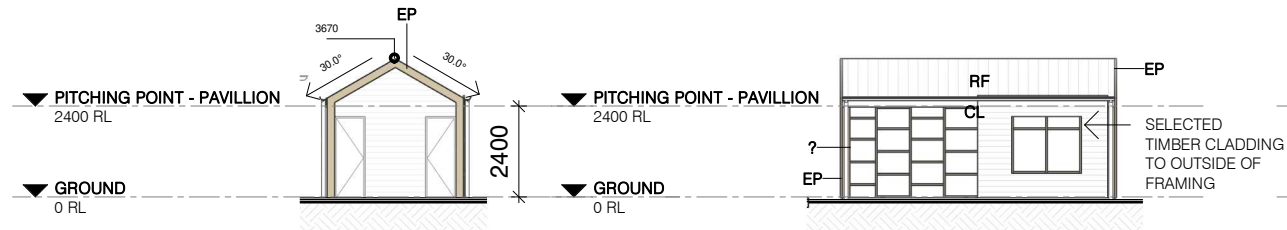


1 WORKSHOP - East Elevation
SCALE: 1 : 200

2 WORKSHOP - North Elevation
SCALE: 1 : 200

3 WORKSHOP - South Elevation
SCALE: 1 : 200

4 WORKSHOP - West Elevation
SCALE: 1 : 200

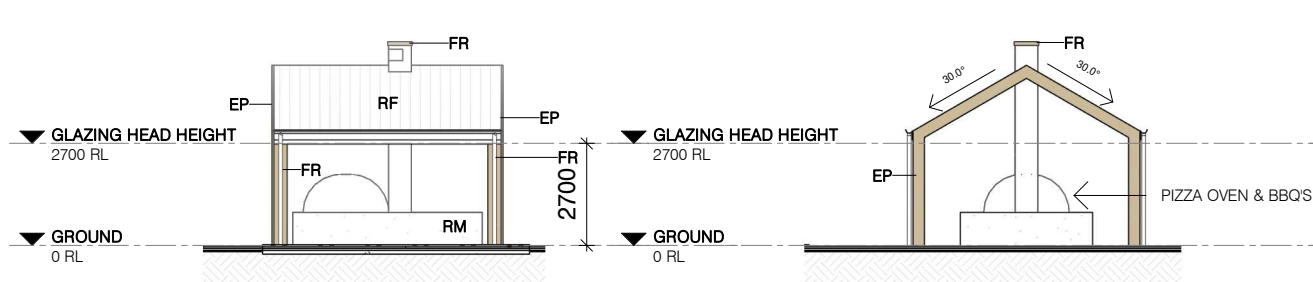


5 PAVILLION - East Elevation
SCALE: 1 : 200

6 PAVILLION - North Elevation
SCALE: 1 : 200

7 PAVILLION - South Elevation
SCALE: 1 : 200

8 PAVILLION - West Elevation
SCALE: 1 : 200



9 COOK'S QUARTERS - East Elevation
SCALE: 1 : 200

10 COOK'S QUARTERS - North Elevation
SCALE: 1 : 200

11 COOK'S QUARTERS - South Elevation
SCALE: 1 : 200

12 COOK'S QUARTERS - West Elevation
SCALE: 1 : 200

DC8
STUDIO

30 Commercial Rd 6 Middlemiss St
Newstead QLD 4006 Australia
07 3252 1188
ABN 63 145 153 215

Lavender Bay NSW 2060 Australia
02 9003 0633
ABN 74 613 313 009

www.dc8studio.com
info@dc8studio.com

Nominated Architect Richard Rizzali
QLD# 2885 NSW# 8853 ACT#2546

SCHEMATIC
DESIGN

CAD DISCLAIMER
ISSUED DRAWINGS TAKE PRECEDENCE OVER CAD
EXPORTS. READ DIGITAL FILES IN CONJUNCTION WITH
ISSUED DRAWINGS. VERIFY DIMENSIONS ON SITE PRIOR TO
PROCEEDING. FIGURED DIMENSIONS TAKE PRECEDENCE
OVER SCALE.

DRAWINGS MAY NOT BE COPIED, DISTRIBUTED OR
REPRODUCED WITHOUT THE WRITTEN PERMISSION OF THE
ARCHITECT.

Client:
STOCKLAND
Project:
THRIVE: NIRIMBA
Address:
NIRIMBA, QLD
Project Number:
STO011

SCALE - 1:200@A3

0 2.5 5 10m

Orientation



Rev.	Date	Amendment	By	Att.

Drawn: Author
Approved: Checker

A3 Scale: 1 : 200

ANCILLARY STRUCTURES -
ELEVATIONS

A1604

Revision:

4/09/2020 2:19:54 PM

SCHEMATIC DESIGN

NOT FOR CONSTRUCTION

THE USE OF CAD BACKGROUND FILES IS FOR INFORMATION ONLY.
FILE MUST BE READ IN CONJUNCTION WITH FINAL PDF FORMAT
ISSUED DRAWING SHEETS.

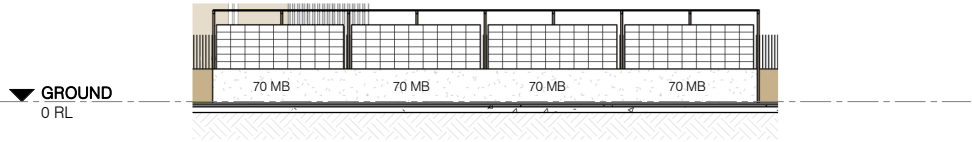
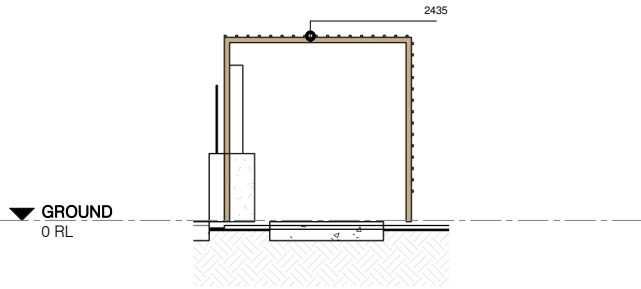
THE ARCHITECT IS NOT RESPONSIBLE FOR THE ACCURACY,
COMPLETENESS OR ANY CONTAMINATION OF
ELECTRONICALLY TRANSMITTED DATA

MATERIALS LEGEND - ELEVATIONS

ABBREVIATIONS

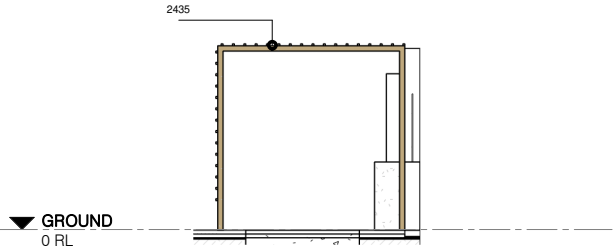
- RF LYSAGHT ENSEAM (SHALE GREY - MATT)
CL SHIPLAP PROFILE TIMBER CLADDING (PAINTED WHITE)
FR ROCKCOTE CERANO RENDER (PAINTED)
RM MASONRY CEMENT STUCCO RENDER (PAINTED)
PF PERFORATED METAL SHEET (POWDERCOAT WHITE)
EP EXPRESSED PORTAL

- SELECTED MATERIAL DEFINED IN MATERIAL SCHEDULE.
ELEVATIONS & SECTIONS TO BE READ IN CONJUNCTION
WITH FINISHES SCHEDULE.
- ALL GUTTERS, DOWNPIPES AND FLASHINGS
COLOURBOND SURFMIST



1 MAIL NODE - North Elevation
SCALE: 1 : 100

3 MAIL NODE - East Elevation
SCALE: 1 : 200



2 MAIL NODE - South Elevation
SCALE: 1 : 100

4 MAIL NODE - West Elevation
SCALE: 1 : 200

DC8
STUDIO

30 Commercial Rd 6 Middlemiss St
Newstead QLD 4006 Australia
07 3252 1188
ABN 63 145 153 215

Lavender Bay NSW 2060 Australia
02 9003 0633
ABN 74 613 313 009

www.dc8studio.com
info@dc8studio.com

Nominated Architect Richard Rizzalli
QLD# 2885 NSW# 8853 ACT#2546

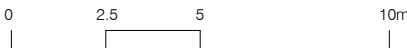
SCHEMATIC
DESIGN

CAD DISCLAIMER
ISSUED DRAWINGS TAKE PRECEDENCE OVER CAD
EXPORTS. READ DIGITAL FILES IN CONJUNCTION WITH
ISSUED DRAWINGS. VERIFY DIMENSIONS ON SITE PRIOR TO
PROCEEDING. FIGURED DIMENSIONS TAKE PRECEDENCE
OVER SCALE.

DRAWINGS MAY NOT BE COPIED, DISTRIBUTED OR
REPRODUCED WITHOUT THE WRITTEN PERMISSION OF THE
ARCHITECT.

Client:
STOCKLAND
Project:
THRIVE: NIRIMBA
Address:
NIRIMBA, QLD
Project Number:
STO011

SCALE - 1:200@A3



Orientation

Rev.	Date	Amendment	By	Att.

Drawn: Author
Approved: Checker

A3 Scale: As indicated

ANCILLARY STRUCTURES -
ELEVATIONS

A1605

Revision: _____

4/09/2020 2:19:55 PM