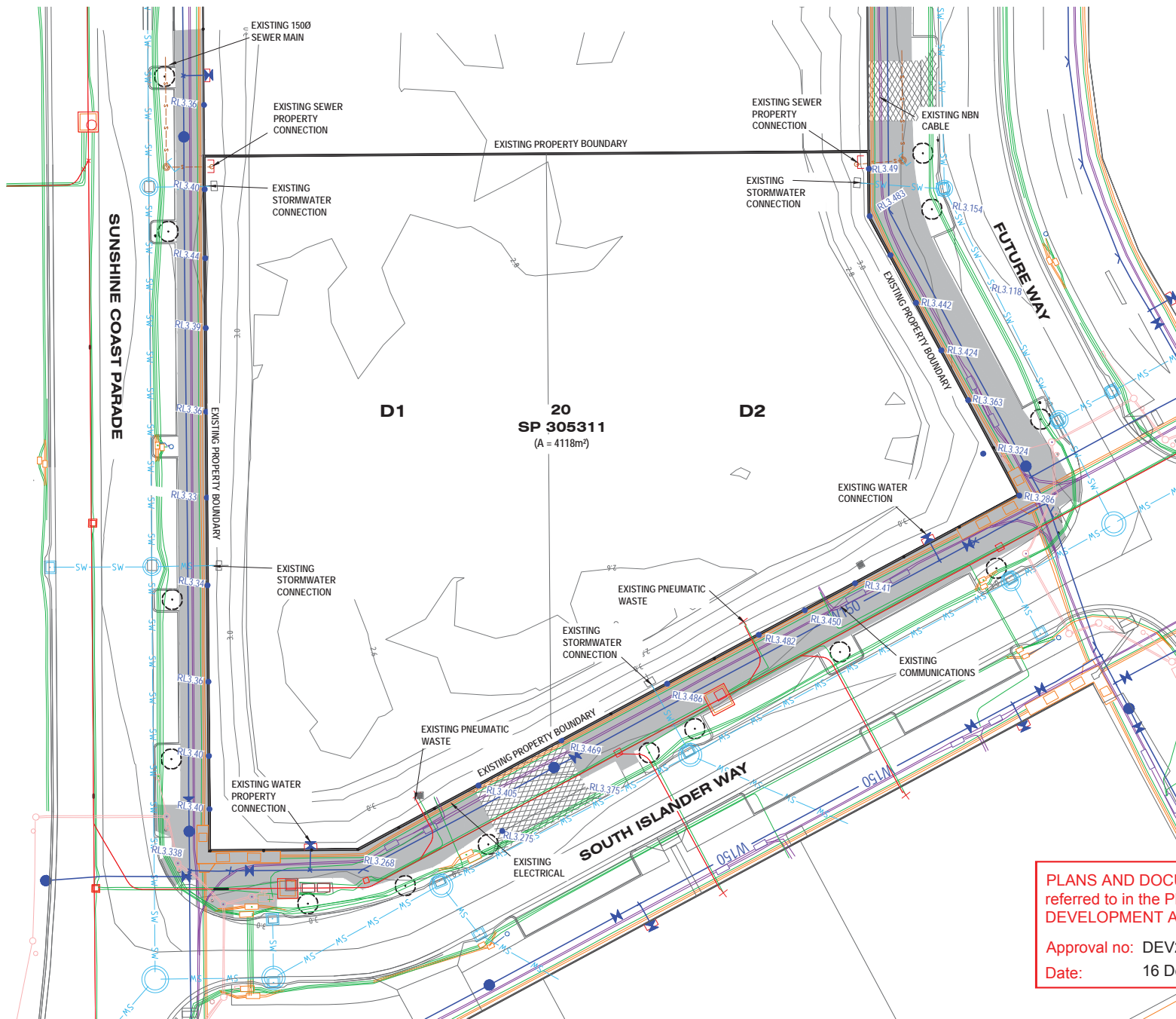




LEGEND

- SW — SW — EXISTING STORMWATER
- S150 — EXISTING SEWER MAIN
- W150 — EXISTING WATERMAIN
- — EXISTING ELECTRICITY - OVERHEAD
- — EXISTING NBN / COMMUNICATIONS
- — EXISTING SMARTCITY
- — EXISTING AWCS
- — EXISTING TRAFFIC ELEC
- — EXISTING SURFACE CONTOURS
- — EXISTING CONCRETE VERGE

NOTE:
EXISTING LEVELS AND SURVEY
INFORMATION SUPPLIED BY GEO
SURVEYING
PH: 5471 2277
LEVEL DATUM: AHD
ORIGIN: PM 198719 RL 4.008



PLANS AND DOCUMENTS
referred to in the PDA
DEVELOPMENT APPROVAL

Approval no: DEV2020/1121
Date: 16 December 2020



REV	DATE	DESCRIPTION	BY	CHKD	DRAWING DETAILS
A	14.05.20	ISSUE FOR APPROVAL	MB	TS	DATUM AHD
B	05-11-20	TO SUIT NEW ARCHITECTURAL DRAWINGS	LN	TS	DESIGN MB
					DESIGN CHECK TS
					DATE 14.05.20

SCALE
0 4 8 12 16 20m
SCALE 1:400 A3
This drawing is not to be copied or amended without written permission from Barlow Shelley Consulting Engineers

APPROVED
Tony Shelley
Director: TONY SHELLEY
(RPEQ 7736)
DRAWING STATUS
FOR APPROVAL

Barlow Shelley
CONSULTING ENGINEERS
P 07 5443 5285
E office@barlowshelley.com.au W www.barlowshelley.com.au
P O Box 899, Maroochydore, 4558 ABN 89 215 591 077

PROJECT: **PROPOSED MULTI STOREY DEVELOPMENT (THE CORSO)
FUTURE WAY, MAROOCHYDORE
FOR HABITAT DEVELOPMENT GROUP**

DRAWING TITLE:
EXISTING SITE CONDITIONS

JOB NUMBER 2014
SHEET: 1 OF 7
DRAWING NUMBER P01
REV B



LEGEND

- PROPOSED DRIVEWAY CROSS-OVER
- BIORETENTION BASIN AREA (62m² TOTAL)
- PROPOSED STORMWATER
- RL3.480 EXISTING LEVELS
- SW EXISTING STORMWATER
- S150 EXISTING SEWER MAIN
- W150 EXISTING WATERMAIN

PLANS AND DOCUMENTS
referred to in the PDA
DEVELOPMENT APPROVAL

Approval no: DEV2020/1121
Date: 16 December 2020



NOTE:
THIS PLAN IS CONCEPTUAL ONLY
AND IS SUBJECT TO
VARIATION AT THE OPERATIONAL WORKS
DESIGN PHASE.

REV	DATE	DESCRIPTION	BY	CHKD	DRAWING DETAILS		SCALE	APPROVED		PROJECT: PROPOSED MULTI STOREY DEVELOPMENT (THE CORSO) FUTURE WAY, MAROOCHYDORE FOR HABITAT DEVELOPMENT GROUP	JOB NUMBER 2014	
A	14.05.20	ISSUE FOR APPROVAL	MB	TS	DATUM AHD			 Director: TONY SHELLEY (RPEQ 7736) DRAWING STATUS FOR APPROVAL		SHEET: 2 OF 7	DRAWING NUMBER P02	REV B
B	05-11-20	TO SUIT NEW ARCHITECTURAL DRAWINGS	LN	TS	DESIGN	MB						
					DRAWN	MB						
					DESIGN CHECK	TS						
					DATE	14.05.20	This drawing is not to be copied or amended without written permission from Barlow Shelley Consulting Engineers					



LEGEND

- PROPOSED EARTHWORKS CUT
- PROPOSED EARTHWORKS FILL
- FFL 4.00 FINISH FLOOR LEVEL
- RL3.480 EXISTING LEVELS

PLANS AND DOCUMENTS
referred to in the PDA
DEVELOPMENT APPROVAL

Approval no: DEV2020/1121
Date: 16 December 2020



NOTE

- MINIMUM BUILDING FLOOR LEVEL TO BE RL3.60 AS PER SUNSHINE COAST COUNCIL FLOOD CERTIFICATE CER20/04633
- CUT AND FILL SHADING REPRESENTS EARTHWORKS BETWEEN NATURAL SURFACE AND FINISH FLOOR LEVELS
- THIS PLAN IS CONCEPTUAL ONLY AND IS SUBJECT TO VARIATION AT THE OPERATIONAL WORKS DESIGN PHASE.

SUNSHINE COAST PARADE

FUTURE WAY

SOUTH ISLANDER WAY

REV	DATE	DESCRIPTION	BY	CHKD	DRAWING DETAILS	SCALE	APPROVED	PROJECT:	JOB NUMBER
A	14.05.20	ISSUE FOR APPROVAL	MB	TS	DATUM	AHD		PROPOSED MULTI STOREY DEVELOPMENT (THE CORSO)	2014
B	05-11-20	TO SUIT NEW ARCHITECTURAL DRAWINGS	LN	TS	DESIGN	MB		FUTURE WAY, MAROOCHYDORE	SHEET: 3 OF 7
					DRAWN	MB		FOR HABITAT DEVELOPMENT GROUP	DRAWING NUMBER
					DESIGN CHECK	TS		PRELIMINARY EARTHWORKS PLAN	P03
					DATE	14.05.20			REV
									B

Director: TONY SHELLEY (RPEQ 7736)

DRAWING STATUS FOR APPROVAL

Barlow Shelley CONSULTING ENGINEERS

P 07 5443 5285

E office@barlowshelley.com.au W www.barlowshelley.com.au

4 PO Box 899, Maroochydore, 4558 ABN 89 215 591 077

PROJECT: PROPOSED MULTI STOREY DEVELOPMENT (THE CORSO)

FUTURE WAY, MAROOCHYDORE

FOR HABITAT DEVELOPMENT GROUP

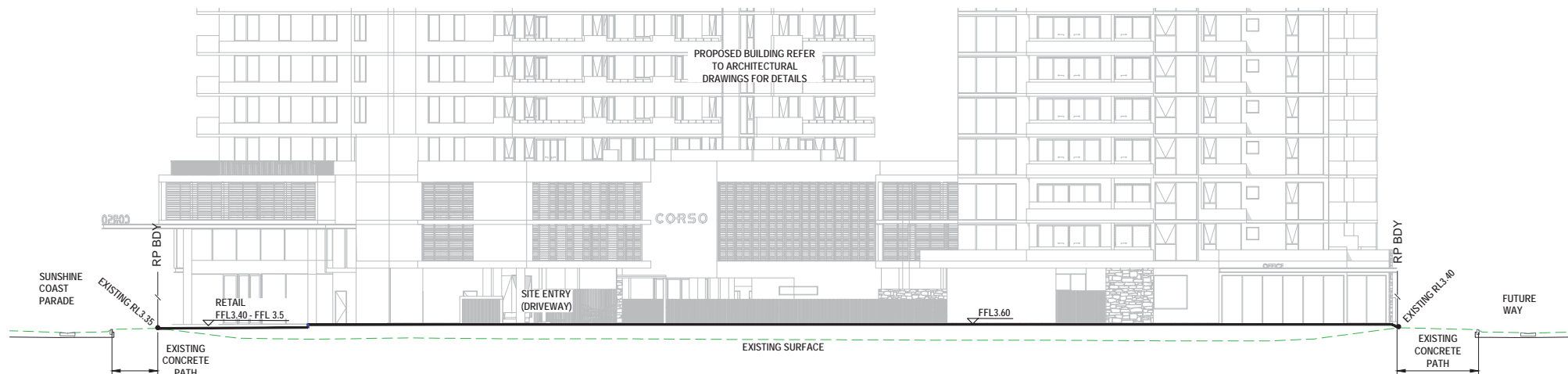
DRAWING TITLE: PRELIMINARY EARTHWORKS PLAN

SCALE 1:400 A3

0 4 8 12 16 20m

SCALE 1:400 A3

This drawing is not to be copied or amended without written permission from Barlow Shelley Consulting Engineers

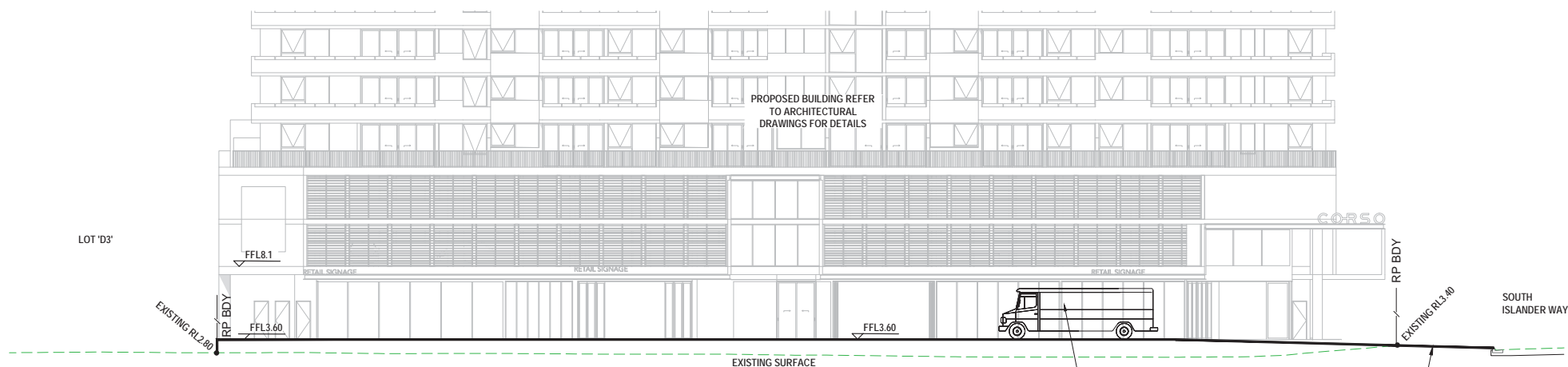


SECTION A
P03 1:250 (A3)

PLANS AND DOCUMENTS
referred to in the PDA
DEVELOPMENT APPROVAL

Approval no: DEV2020/1121

Date: 16 December 2020



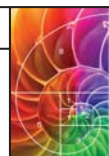
SECTION B
P03 1:400 (A3)

WCV 8.8m LONG & 3.0m HIGH
TO TRAVEL THROUGH
CARPARK FROM SOUTH
ISLANDER WAY AND EXIT VIA
FUTURE WAY

REV	DATE	DESCRIPTION	BY	CHKD	DRAWING DETAILS	SCALE	APPROVED	PROJECT:	JOB NUMBER
A	14.05.20	ISSUE FOR APPROVAL	MB	TS	DATUM	AHD		PROPOSED MULTI STOREY DEVELOPMENT (THE CORSO)	2014
B	05-11-20	TO SUIT NEW ARCHITECTURAL DRAWINGS	LN	TS	DESIGN	MB		FUTURE WAY, MAROOCHYDORE	SHEET: 4 OF 7
					DRAWN	MB		FOR HABITAT DEVELOPMENT GROUP	
					DESIGN CHECK	TS		DRAWING TITLE:	DRAWING NUMBER
					DATE	14.05.20		PRELIMINARY EARTHWORKS SECTIONS	P04
									REV
									B

This drawing is not to be copied or amended without written permission from Barlow Shelley Consulting Engineers

Director: TONY SHELLEY
(RPEQ 7736)
DRAWING STATUS
FOR APPROVAL

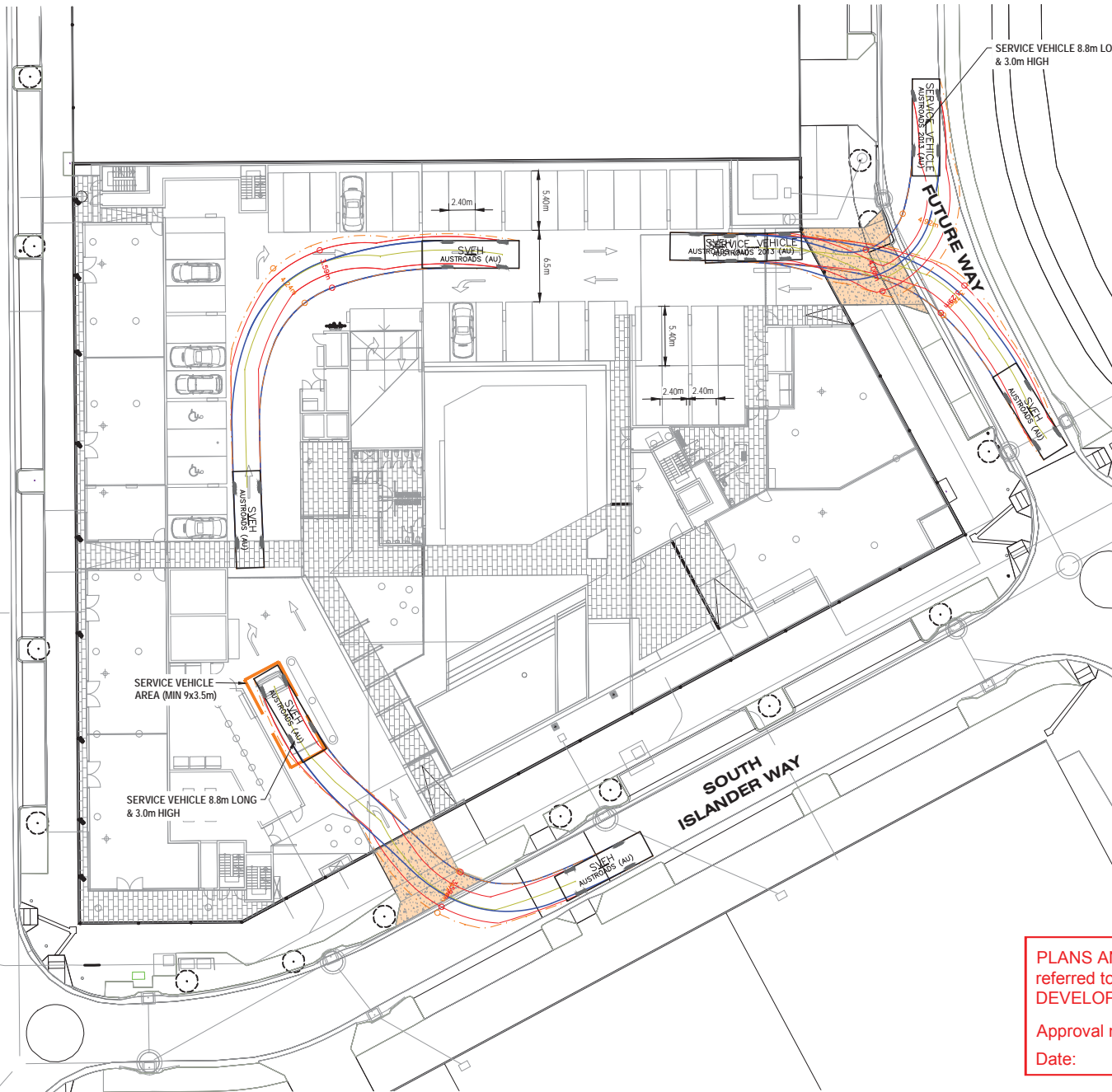


Barlow Shelley
CONSULTING ENGINEERS
P 07 5443 5285
E office@barlowshelley.com.au W www.barlowshelley.com.au
P0 Box 899, Maroochydore, 4558 ABN 89 215 591 077

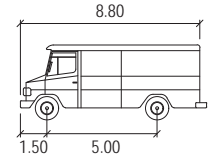
PROJECT:
PROPOSED MULTI STOREY DEVELOPMENT (THE CORSO)
FUTURE WAY, MAROOCHYDORE
FOR HABITAT DEVELOPMENT GROUP
DRAWING TITLE:
PRELIMINARY EARTHWORKS SECTIONS

JOB NUMBER
2014
SHEET: 4 OF 7
DRAWING NUMBER
P04
REV
B

SUNSHINE COAST PARADE



WCV 8.8m LONG & 3.0m HIGH
TO TRAVEL THROUGH
CARPARK FROM SOUTH
ISLANDER WAY AND EXIT VIA
FUTURE WAY



SERVICE VEHICLE meters
Width : 2.50
Track : 2.50
Lock to Lock Time : 6.0
Steering Angle : 38.7

PLANS AND DOCUMENTS
referred to in the PDA
DEVELOPMENT APPROVAL

Approval no: DEV2020/1121
Date: 16 December 2020



REV	DATE	DESCRIPTION	BY	CHKD	DRAWING DETAILS
A	14.05.20	ISSUE FOR APPROVAL	MB	TS	DATUM AHD
B	05.11.20	TO SUIT NEW ARCHITECTURAL DRAWINGS	LN	TS	DESIGN MB
C	03.12.20	VEHICLE TURNING PATH AMENDED	LN	TS	DRAWN MB
					DESIGN CHECK TS
					DATE 14.05.20

SCALE
0 4 8 12 16 20m
SCALE 1:400 A3

APPROVED
Tony Shelley
Director: TONY SHELLEY
(RPEQ 7736)
DRAWING STATUS
FOR APPROVAL

Barlow Shelley
CONSULTING ENGINEERS
P 07 5443 5285
E office@barlowshelley.com.au W www.barlowshelley.com.au
P.O. Box 899, Maroochydore, 4558, ABN 89 215 591 077

PROJECT: PROPOSED MULTI STOREY DEVELOPMENT (THE CORSO)
FUTURE WAY, MAROOCHYDORE
FOR HABITAT DEVELOPMENT GROUP
DRAWING TITLE: VEHICLE SWEEP PATHS

JOB NUMBER	2014
SHEET: 5 OF 7	
DRAWING NUMBER	P05
REV	C



LEGEND

- PROPOSED DRIVEWAY CROSS-OVER
- BIORETENTION BASIN AREA (62m² MIN)
- PROPOSED STORMWATER
- EXISTING STORMWATER
- FLOOD RL3.280
- Q100 LOCAL DRAINAGE RL'S (AS PER COUNCIL FLOOD CERTIFICATE)

NOTE:
THIS PLAN IS CONCEPTUAL ONLY
AND IS SUBJECT TO
VARIATION AT THE OPERATIONAL WORKS
DESIGN PHASE.

NOTE:
MIN BIO-RETENTION AREA AS PER TABLE B,
APPENDIX 2 OF QLD SPP (2017) =
4119m² x 1.5% = 62m²

PLANS AND DOCUMENTS
referred to in the PDA
DEVELOPMENT APPROVAL

Approval no: DEV2020/1121

Date: 16 December 2020



BIORETENTION BASIN
0.50m DEEP SANDY LOAM FILTER MEDIA
0.10m DEEP COARSE SAND LAYER
0.2m DEEP 5mm NOMINAL GRAVEL DRAINAGE LAYER

DEEP PLANTING:
REFER TO LANDSCAPING
DRAWINGS

RPB DY

EXISTING FOOTPATH

SOUTH ISLANDER WAY

EXISTING KERB & CHANNEL

SECTION A
1:100 (A3)

BIORETENTION TYPICAL SECTION

REV	DATE	DESCRIPTION	BY	CHKD	DRAWING DETAILS	SCALE	APPROVED	PROJECT:	JOB NUMBER
A	14.05.20	ISSUE FOR APPROVAL	MB	TS	DATUM	AHD	<i>Tony Shelley</i>	PROPOSED MULTI STOREY DEVELOPMENT (THE CORSO) FUTURE WAY, MAROOCHYDORE FOR HABITAT DEVELOPMENT GROUP	2014
B	05-11-20	TO SUIT NEW ARCHITECTURAL DRAWINGS	LN	TS	DESIGN	MB	Director: TONY SHELLEY (RPEQ 7736)	DRAWING TITLE:	SHEET: 6 OF 7
C	01-12-2020	BIO-RETENTION BASINS ADDED IN STAGE 1 & 2	LN	TS	DRAWN	TS	DRAWING STATUS	STORMWATER MANAGEMENT PLAN	DRAWING NUMBER
					DESIGN CHECK	TS	FOR APPROVAL	GROUND FLOOR - SHEET 1 OF 2	P06
					DATE	14.05.20			REV
									C

This drawing is not to be copied or amended without written permission from Barlow Shelley Consulting Engineers

PROJECT: PROPOSED MULTI STOREY DEVELOPMENT (THE CORSO)
FUTURE WAY, MAROOCHYDORE
FOR HABITAT DEVELOPMENT GROUP
DRAWING TITLE: STORMWATER MANAGEMENT PLAN
GROUND FLOOR - SHEET 1 OF 2
JOB NUMBER: 2014
SHEET: 6 OF 7
DRAWING NUMBER: P06
REV: C