

NOTE  
REFER VMP DRAWINGS FOR  
EXISTING TREE RETENTION

PLANS AND DOCUMENTS  
referred to in the PDA  
DEVELOPMENT APPROVAL

Approval no: DEV2020/1099

Date: 9 December 2020



DO NOT SCALE THIS DRAWING  
IF IN DOUBT - ASK!



LOCALITY PLAN

REVISIONS

No	Description	Date	By
A	FOR APPROVAL	18/02/2020	DJS
B	REISSUE FOR APPROVAL	21/02/2020	DES
C	REISSUE FOR APPROVAL	24/06/2020	SK
D	REISSUE FOR APPROVAL	19/08/2020	DES

Associated Consultants

Client

ECONOMIC  
DEVELOPMENT  
QUEENSLAND (EDQ)

Project

OXLEY SECONDARY  
COLLEGE REDEVELOPMENT  
STAGE 1

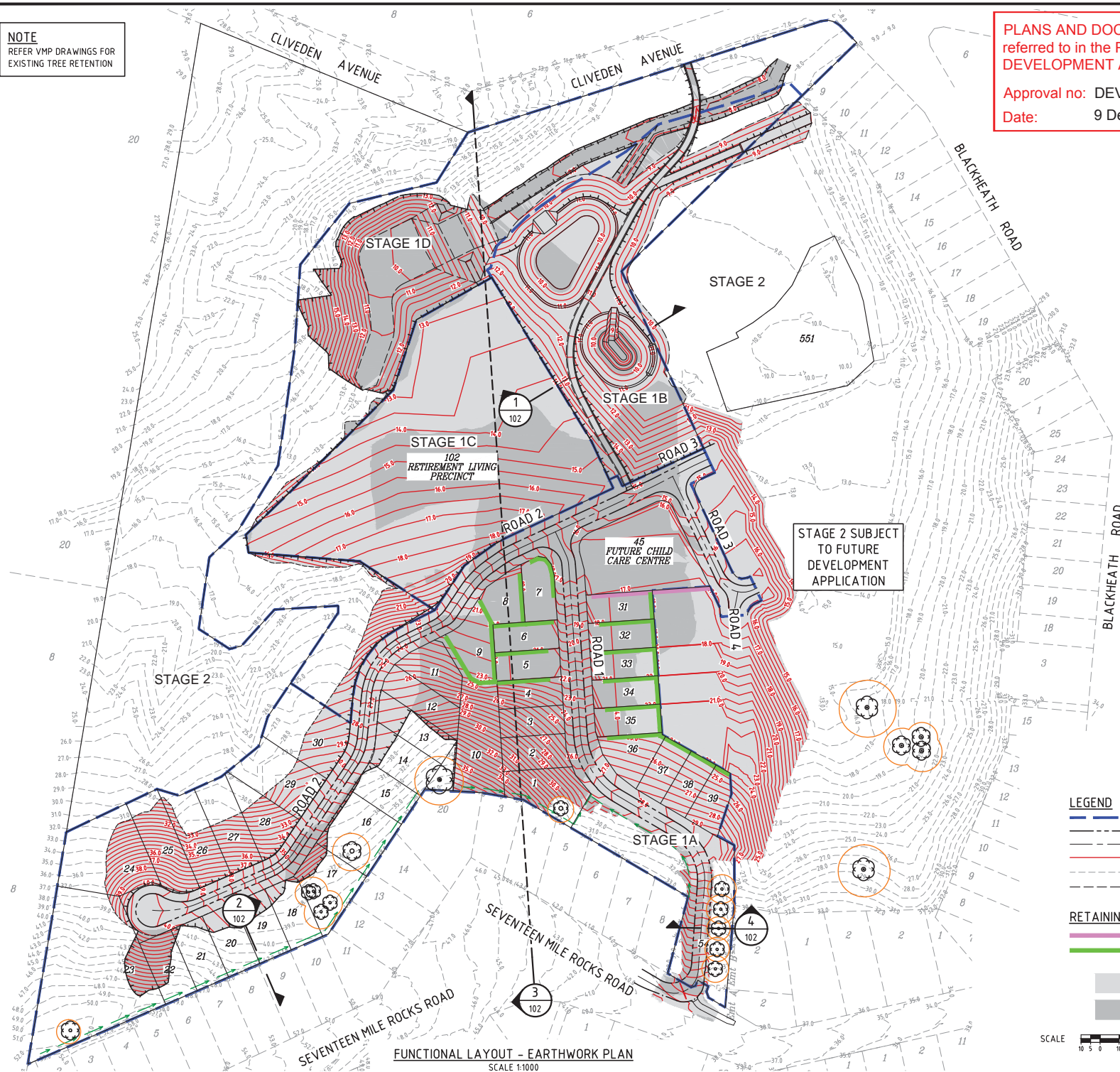


LEVEL 1 - 62 ASTOR TCE  
SPRING HILL, QLD 4000  
PHONE 07 3017 1900  
EMAIL kn@knpl.com.au  
ABN 35 112 053 611

Approved

Drawing title:  
FUNCTIONAL LAYOUT  
EARTHWORKS PLAN

Drawn	Designed	Checked	Date
RW	DJS	GBG	FEB 20
Scale	Sheet	Revision	
AS SHOWN	1 of 11		
A1	19-173-101	D	



LEGEND

- STAGE BOUNDARY
- KERB FACE
- ROAD CENTRELINE
- FINISHED CONTOUR
- EXISTING CONTOURS
- BATTER LINE

RETAINING WALLS

- RETAINING WALL <1.0m HIGH
- RETAINING WALL 1.0m - 2.0m

- EXTENT OF FILL
- EXTENT OF CUT

SCALE  
1:1000 (A1 UNREDUCED)

RETIREMENT VILLAGE  
PRECINCT BOUNDARY

PLANS AND DOCUMENTS  
referred to in the PDA  
DEVELOPMENT APPROVAL

Approval no: DEV2020/1099

Date: 9 December 2020



AMENDED IN RED

By: Jennifer Davison

Date: 23 November 2020



DO NOT SCALE THIS DRAWING  
IF IN DOUBT - ASK!

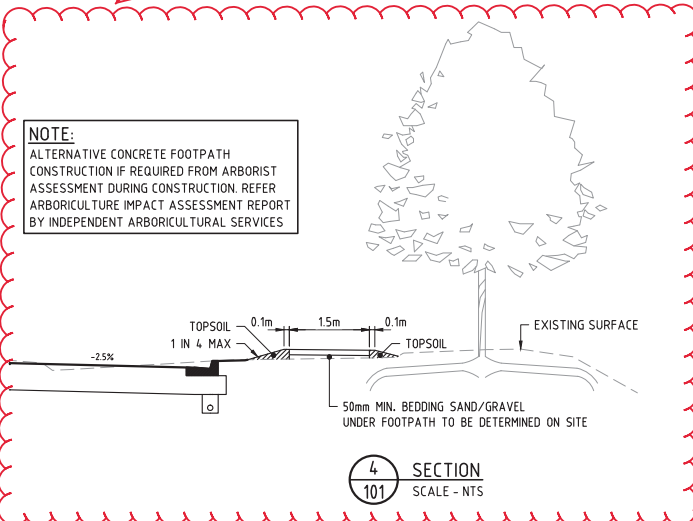


LOCALITY PLAN

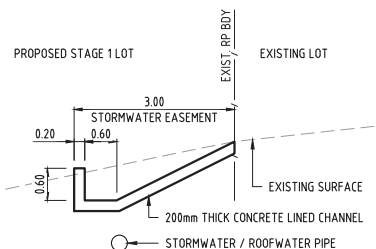
Amend in accordance with design  
endorsed by Compliance Assessment  
Condition 18

1 SECTION  
101 SCALE 1:100

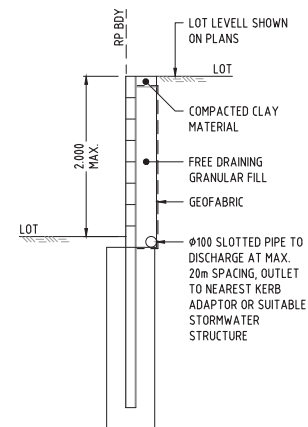
NOTE:  
ALTERNATIVE CONCRETE FOOTPATH  
CONSTRUCTION IF REQUIRED FROM ARBORIST  
ASSESSMENT DURING CONSTRUCTION. REFER  
ARBORICULTURE IMPACT ASSESSMENT REPORT  
BY INDEPENDENT ARBORICULTURAL SERVICES



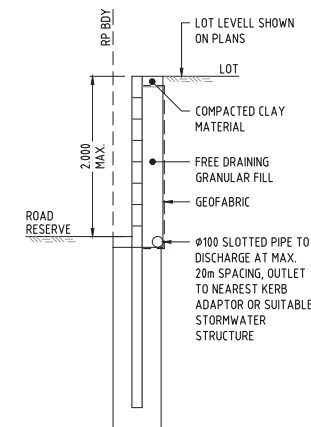
4 SECTION  
101 SCALE - NTS



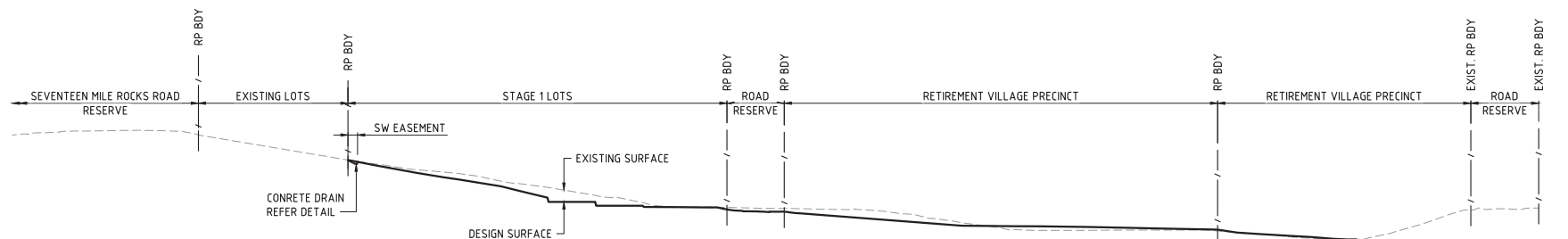
2 SECTION - TYPICAL  
101 SCALE 1:50



TYPICAL CONCRETE SLEEPER WALL DETAIL  
SCALE 1:25



TYPICAL CONCRETE SLEEPER WALL DETAIL  
- ADJACENT TO ROAD RESERVE  
SCALE 1:25



3 SECTION  
101 SCALE 1:50

SCALE 1:50 (A1 UNREDUCED)

SCALE 1:100 (A1 UNREDUCED)

REVISIONS

No	Description	Date	By
A	FOR APPROVAL	18/02/2020	DJS
B	REISSUE FOR APPROVAL	21/02/2020	DES
C	REISSUE FOR APPROVAL	19/08/2020	DES

Associated Consultants

Client

ECONOMIC  
DEVELOPMENT  
QUEENSLAND (EDQ)

Project

OXLEY SECONDARY  
COLLEGE REDEVELOPMENT  
STAGE 1

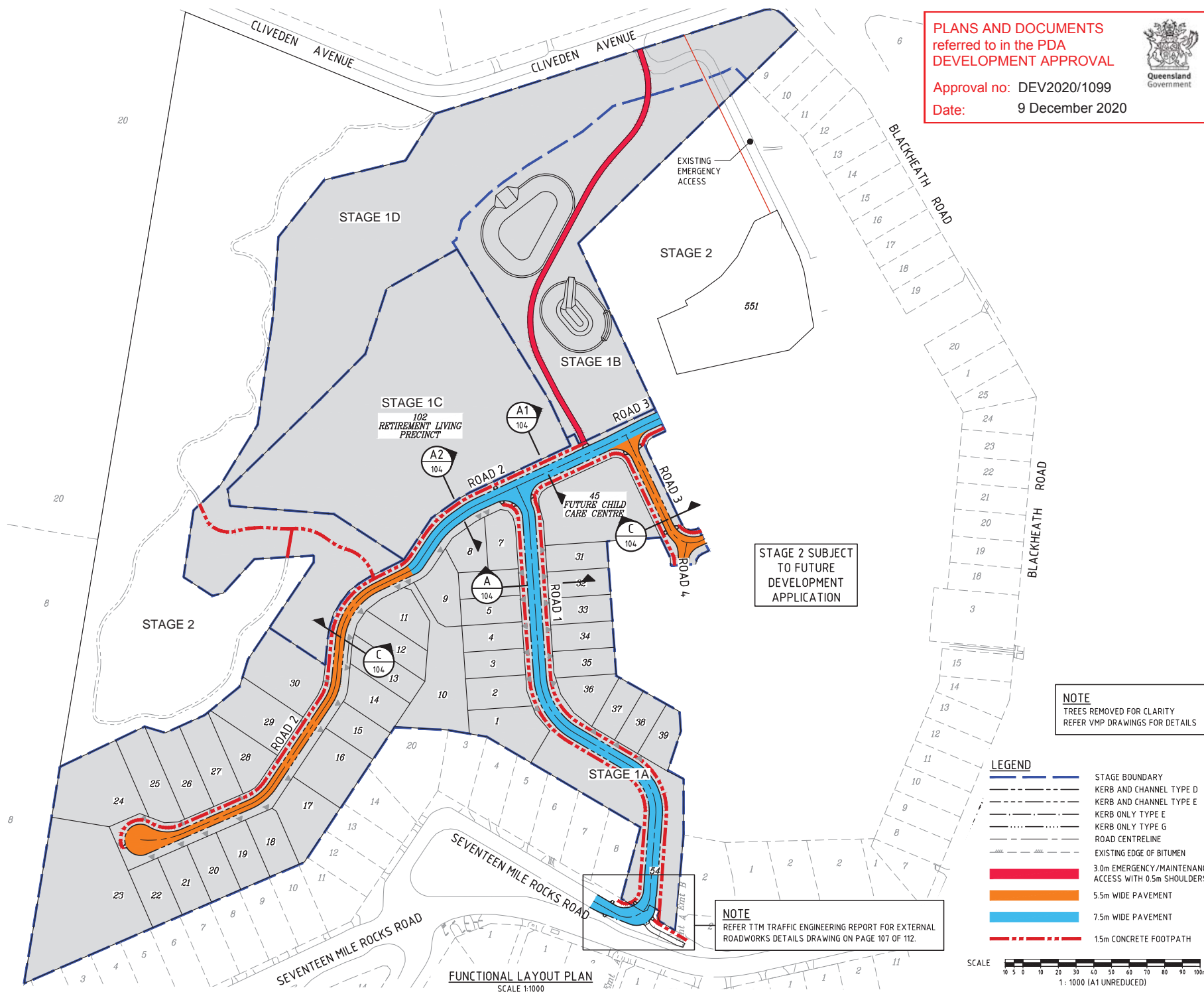


LEVEL 1 - 62 ASTOR TCE  
SPRING HILL, QLD 4000  
PHONE 07 3017 1900  
EMAIL kn@knpl.com.au  
ABN 35 112 053 611

Approved

Drawing title:  
FUNCTIONAL LAYOUT  
EARTHWORKS PLAN  
SECTIONS

Drawn	Designed	Checked	Date
RW	DJS	GBG	FEB 20
Scale	Sheet	Revision	
AS SHOWN	2 of 11		
A1	19-173-102	C	



Queensland  
Government

Drawn RW	Designed DJS	Checked GBG	Date FEB 20
Scale AS SHOWN			Sheet 3 of 1
A1	Drawing No 19-173-103		Revision D

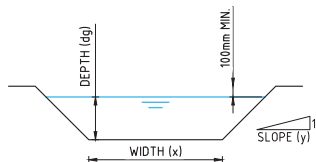


Queensland  
Government

Drawn RW	Designed DJS	Checked GBG	Date FEB 20
Scale AS SHOWN			Sheet 3 of 1
A1	Drawing No 19-173-103		Revision D







# OVERLAND FLOW CHANNEL - TYPICAL SECTION

NTS

NB: FOR DESIGN, CONSTRUCTION AND SURFACE TREATMENT DETAILS  
REFER STORMWATER MANAGEMENT PLAN BY DESIGNFLOW

## LEGEND

- STAGE BOUNDARY
- KERB FACE
- PROPOSED STORMWATER
- EXISTING STORMWATER
- INDICATIVE DRIVEWAY LOCATION
- PROPOSED ROOFWATER
- OVERLAND FLOW CHANNEL
- DRAINAGE SWALE (REFER SECTION 2 ON KN DWG 19-173-102)

## NOTE

TREES REMOVED FOR CLARITY  
REFER VMP DRAWINGS FOR DETAILS

**AMENDED IN RED**

By: Jennifer Davison

Date: 23 November 2020



**PLANS AND DOCUMENTS**  
referred to in the PDA  
**DEVELOPMENT APPROVAL**

Approval no: DEV2020/1099

Date: 9 December 2020



STAGE 2 SUBJECT  
TO FUTURE  
DEVELOPMENT  
APPLICATION

Amend in accordance with  
Condition 21

## STORMWATER LAYOUT PLAN

SCALE 1:1000

SCALE 1: 500 (A1 UNREDUCED)

DO NOT SCALE THIS DRAWING  
IF IN DOUBT - ASK!



## LOCALITY PLAN

## REVISIONS

No	Description	Date	By
A	FOR APPROVAL	18/02/2020	DJS
B	REISSUE FOR APPROVAL	21/02/2020	DES
C	REISSUE FOR APPROVAL	24/06/2020	SK
D	REISSUE FOR APPROVAL	19/08/2020	DES

Associated Consultants

Client

ECONOMIC  
DEVELOPMENT  
QUEENSLAND (EDQ)

Project

OXLEY SECONDARY  
COLLEGE REDEVELOPMENT  
STAGE 1



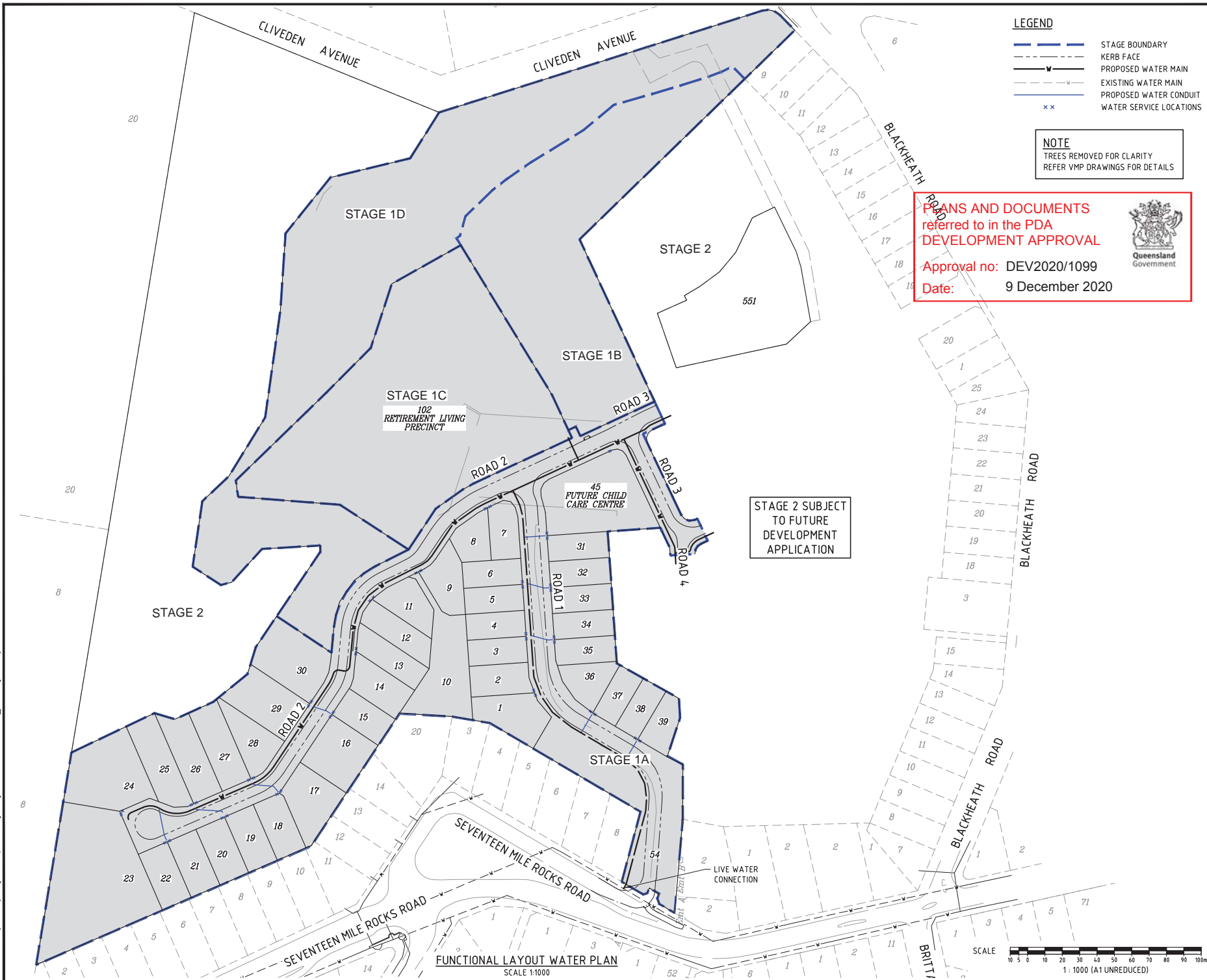
LEVEL 1 - 62 ASTOR TCE  
SPRING HILL, QLD 4000  
PHONE 07 3017 1900  
EMAIL kn@knpl.com.au  
ABN 35 112 053 611

Approved

Drawing title:  
**FUNCTIONAL LAYOUT  
STORMWATER**

Drawn	Designed	Checked	Date
RW	DJS	GBG	FEB 20
Scale	Sheet	Revision	
AS SHOWN	5 of 11		
A1	19-173-105	D	





DO NOT SCALE THIS DRAWING  
IF IN DOUBT - ASK!

LOCALITY PLAN

REVISIONS

No	Description	Date	By
A	FOR APPROVAL	18/02/2020	DJS
B	REISSUE FOR APPROVAL	21/02/2020	DES
C	REISSUE FOR APPROVAL	24/06/2020	SK
D	REISSUE FOR APPROVAL	19/08/2020	DES

Associated Consultants

Client

**ECONOMIC DEVELOPMENT QUEENSLAND (EDQ)**

Project

**OXLEY SECONDARY COLLEGE REDEVELOPMENT STAGE 1**

**KN GROUP PTY LTD**  
CONSULTING ENGINEERS

LEVEL 1 - 62 ASTOR TCE  
SPRING HILL, QLD 4000  
PHONE 07 3017 1900  
EMAIL kng@knpl.com.au  
ABN 35 112 053 611

Approved

Drawing title

**FUNCTIONAL LAYOUT WATER RETICULATION**

Drawn	Designed	Checked	Date
RW	DJS	GBG	FEB 20

Scale

AS SHOWN

Sheet 7 of 11

Drawing No

19-173-107

Revision

D

FOR CONTINUATION REFER KNG DWG No 19-173-110

PLANS AND DOCUMENTS  
referred to in the PDA  
DEVELOPMENT APPROVAL

Approval no: DEV2020/1099

Date: 9 December 2020



STAGE 2 SUBJECT  
TO FUTURE  
DEVELOPMENT  
APPLICATION

NOTE  
REFER VMP DRAWINGS FOR  
EXISTING TREE RETENTION

LEGEND

- STAGE BOUNDARY
- KERB FACE
- PROPOSED STORMWATER
- PROPOSED SEWER
- PROPOSED WATER RETICULATION
- EXISTING STORMWATER
- EXISTING SEWER
- FUTURE SEWER
- PROPOSED ELECTRICAL/COMMS/GAS ALIGNMENT
- PROPOSED ELECTRICAL PILLAR
- PROPOSED ELECTRICAL STREET LIGHT
- PROPOSED WATER SERVICE
- PROPOSED WATER CONDUIT
- INDICATIVE DRIVEWAY LOCATION
- PROPOSED SWALE
- PROPOSED BUILDING ENVELOPE
- PROPOSED STREET TREES

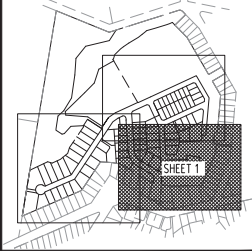
SCALE  
10 5 0 10 20 30 40 50m  
1 : 500 (A1 UNREDUCED)

OVERALL SERVICES LAYOUT PLAN  
SCALE 1:500

DO NOT SCALE THIS DRAWING  
IF IN DOUBT - ASK!



LOCALITY PLAN



REVISIONS

No	Description	Date	By
A	FOR APPROVAL	18/02/2020	DJS
B	REISSUE FOR APPROVAL	21/02/2020	DES
C	REISSUE FOR APPROVAL	24/06/2020	SLK
D	REISSUE FOR APPROVAL	19/08/2020	DES

Associated Consultants

Client

ECONOMIC  
DEVELOPMENT  
QUEENSLAND (EDQ)

Project

OXLEY SECONDARY  
COLLEGE REDEVELOPMENT  
STAGE 1



LEVEL 1 - 62 ASTOR TCE  
SPRING HILL, QLD 4000  
PHONE 07 3017 1900  
EMAIL kn@knpl.com.au  
ABN 35 112 053 611

Approved

Drawing title

FUNCTIONAL LAYOUT  
OVERALL SERVICES  
SHEET 1

Drawn RW	Designed DJS	Checked GBG	Date FEB 20
Scale AS SHOWN	Sheet 8 of 11	Revision	
A1	19-173-108	D	

FOR CONTINUATION REFER KNG DWG No 19-173-109



NOTE  
REFER VMP DRAWINGS FOR  
EXISTING TREE RETENTION

PLANS AND DOCUMENTS  
referred to in the PDA  
DEVELOPMENT APPROVAL

Approval no: DEV2020/1099

Date: 9 December 2020



STAGE 2

FOR CONTINUATION REFER KNG DWG No 19-173-110

FUTURE CHILD  
CARE CENTRE

FOR CONTINUATION REFER KNG DWG No 19-173-108

SEVENTEEN MILE ROCKS ROAD

OVERALL SERVICES LAYOUT PLAN  
SCALE 1:500

LEGEND

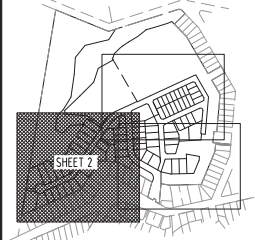
- STAGE BOUNDARY
- KERB FACE
- PROPOSED STORMWATER
- PROPOSED SEWER
- PROPOSED WATER RETICULATION
- EXISTING STORMWATER
- EXISTING SEWER
- FUTURE SEWER
- PROPOSED ELECTRICAL/COMMS/GAS ALIGNMENT
- PROPOSED ELECTRICAL PILLAR
- PROPOSED ELECTRICAL STREET LIGHT
- PROPOSED WATER SERVICE
- PROPOSED WATER CONDUIT
- INDICATIVE DRIVEWAY LOCATION
- PROPOSED SWALE
- PROPOSED BUILDING ENVELOPE
- PROPOSED STREET TREES

SCALE  
1 : 500 (A1 UNREDUCED)

DO NOT SCALE THIS DRAWING  
IF IN DOUBT - ASK!



LOCALITY PLAN



REVISIONS

No	Description	Date	By
A	FOR APPROVAL	18/02/2020	DJS
B	REISSUE FOR APPROVAL	21/02/2020	DES
C	REISSUE FOR APPROVAL	24/06/2020	SKX
D	REISSUE FOR APPROVAL	19/08/2020	DES

Associated Consultants

Client

ECONOMIC  
DEVELOPMENT  
QUEENSLAND (EDQ)

Project

OXLEY SECONDARY  
COLLEGE REDEVELOPMENT  
STAGE 1



LEVEL 1 - 62 ASTOR TCE  
SPRING HILL, QLD 4000  
PHONE 07 3017 1900  
EMAIL kn@knpl.com.au  
ABN 35 112 053 611


Approved

Drawing title

FUNCTIONAL LAYOUT  
OVERALL SERVICES  
SHEET 2

Drawn	Designed	Checked	Date
RW	DJS	GBG	FEB 20
Scale	Sheet	Revision	
AS SHOWN	9 of 11		
A1	19-173-109	D	



SCALE  1 : 500 (A1 UNREDUCED)

Drawn RW	Designed DJS	Checked GBG	Date FEB 20
Scale AS SHOWN			Sheet 10 of
A1	Drawing No 19-173-110	Revision D	

HA 13090 9173 Oxley Secondary College Redevelopment DA Engineering Asset Functional 19-173-111\_PARKING.dwg Printed by AK on 20/08/2020 5:52:21 PM

