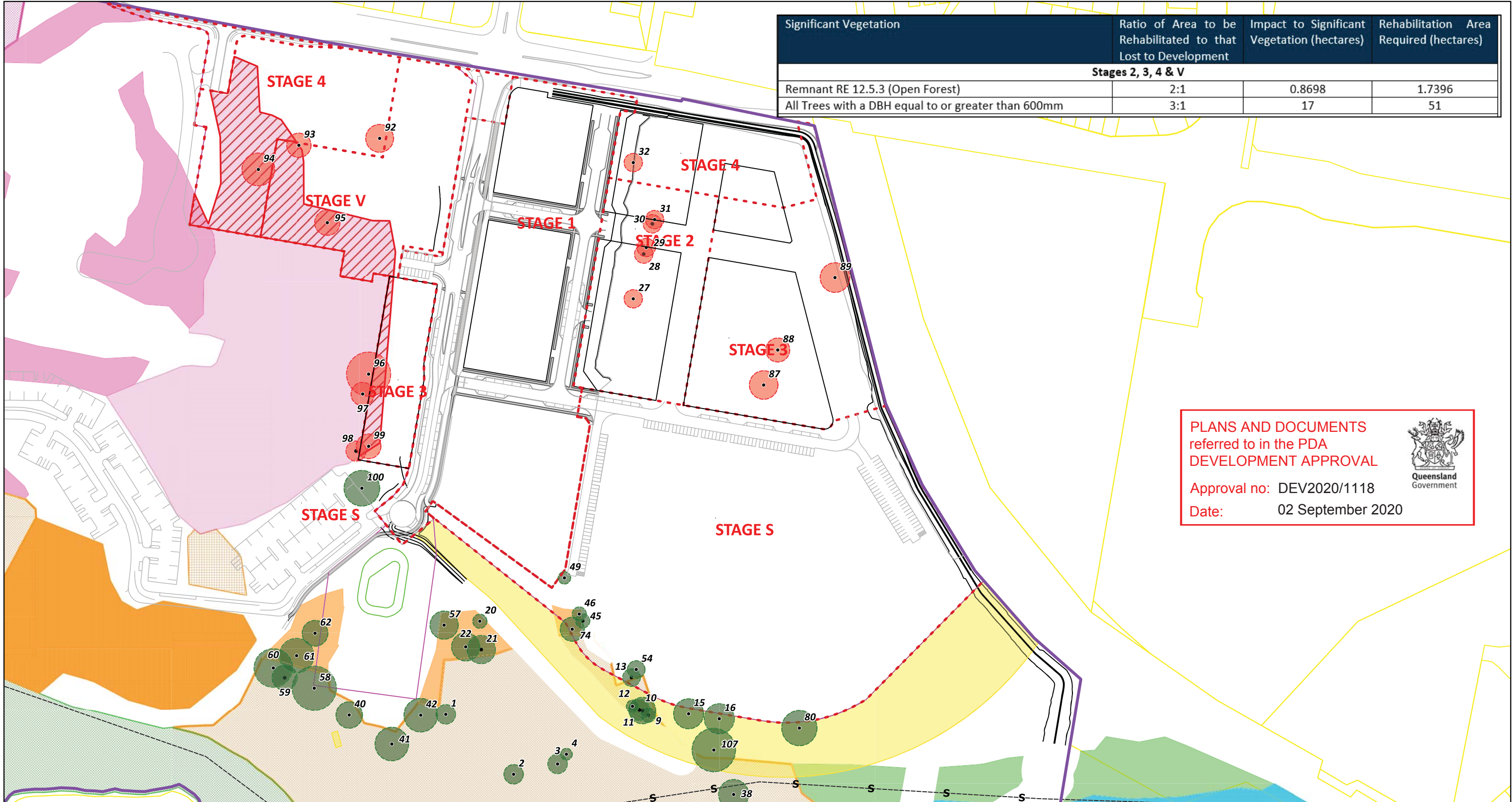


Significant Vegetation	Ratio of Area to be Rehabilitated to that Lost to Development	Impact to Significant Vegetation (hectares)	Rehabilitation Area Required (hectares)
Stages 2, 3, 4 & V			
Remnant RE 12.5.3 (Open Forest)	2:1	0.8698	1.7396
All Trees with a DBH equal to or greater than 600mm	3:1	17	51



PLANS AND DOCUMENTS referred to in the PDA DEVELOPMENT APPROVAL

Approval no: DEV2020/1118

Date: 02 September 2020




Carseldine Village - Ecological Restoration

Sheet 6 - Future Stages Impact Plan

28 South Project Ref: 2017-057

Data Sources: Nearmap Aerial Imagery (Nearmap July 2019); Digital Cadastre Database (Dept. Natural Resources and Mines, 2019); Roads (DNRME, 2018).



Legend

 Carseldine Village Site Boundary	 Property Boundaries	 6 Open Forest (Non-remnant)
 Stage Boundaries	Significant Vegetation	 7 Open Forest - Modified Understory (RE 12.3.11)
 Impact to Significant Vegetation	 1 Open Forest (RE 12.5.2)	 8 Riverine Open Forest (RE 12.3.7)
 Habitat trees (+600mm DBH)	 2 Open Forest (RE 12.5.3)	 9 Open Woodland (non-remnant)
 Tree Removed for Future Stages (17)	 3 Open Forest - Modified Understory (RE 12.5.3)	 10 Closed Forest (Non-remnant)
 Tree Retained	 4 Open Forest (RE 12.3.11)	
	 5 Open Forest - Modified Understory (RE 12.3.11)	

Issue Date	Dwg No.	Author
19 May 2020	2017-057-ERP-005	RF
Approved		Revision Note
MT		

(A3) GDA 94 MGA 56

1:2500

