

URBIS

PLANS AND DOCUMENTS  
referred to in the PDA  
DEVELOPMENT APPROVAL



Queensland  
Government

Approval no: DEV2020/1118

Date: 02 September 2020

# CARSELDINE URBAN VILLAGE STAGE 2 LANDSCAPE CONCEPT

PREPARED FOR

**ECONOMIC DEVELOPMENT QUEENSLAND**

REV B - 20 MAY 2020

FOR APPROVAL

© Urbis 2020

This publication is subject to copyright. Except as permitted under the *Copyright Act 1968*, no part of it may in any form or by any means (electronic, mechanical, photocopying, recording or otherwise) be reproduced, stored in a retrieval system or transmitted without prior written permission. Enquiries should be addressed to the publishers.

---

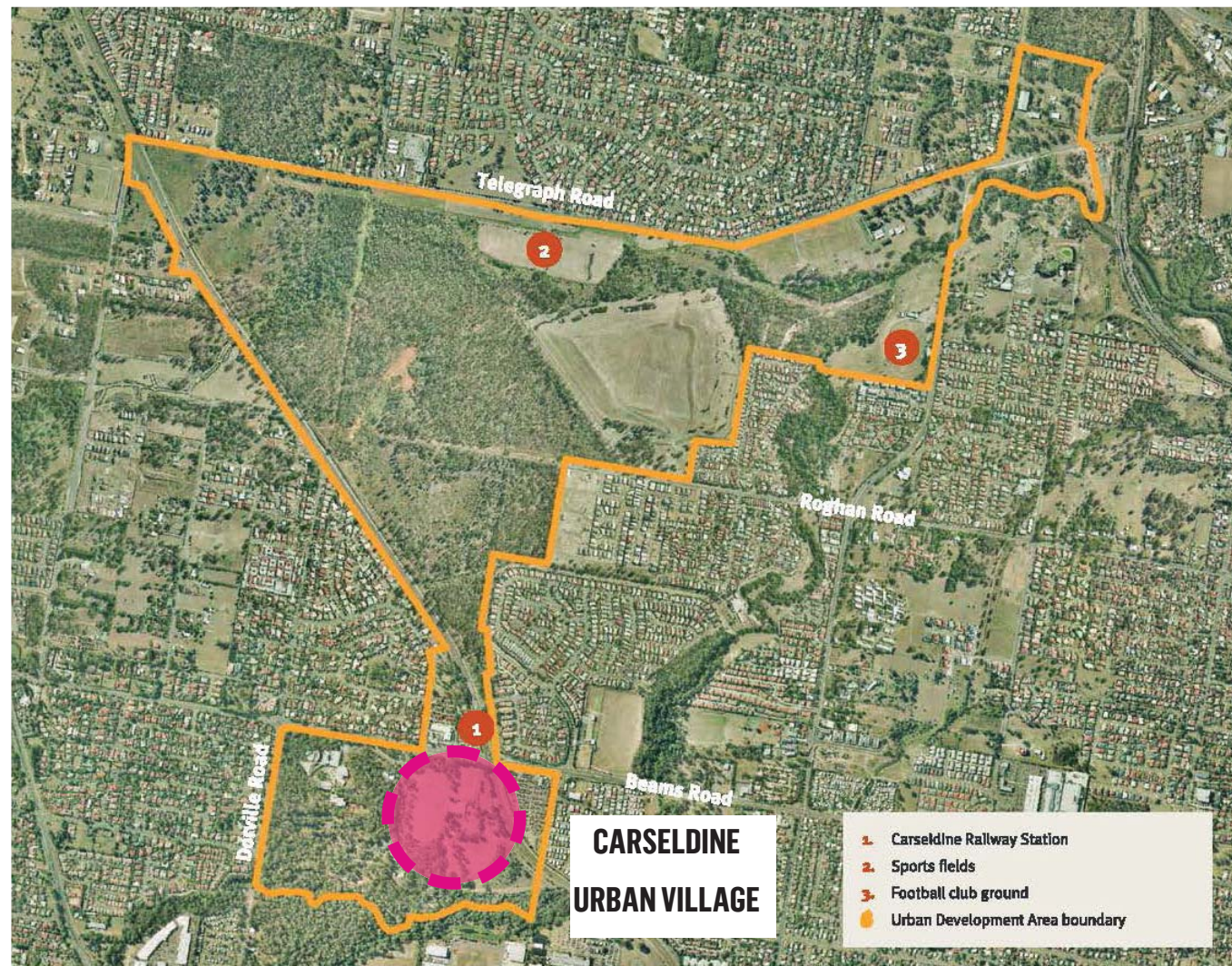
**URBIS.COM.AU**

# CONTENTS

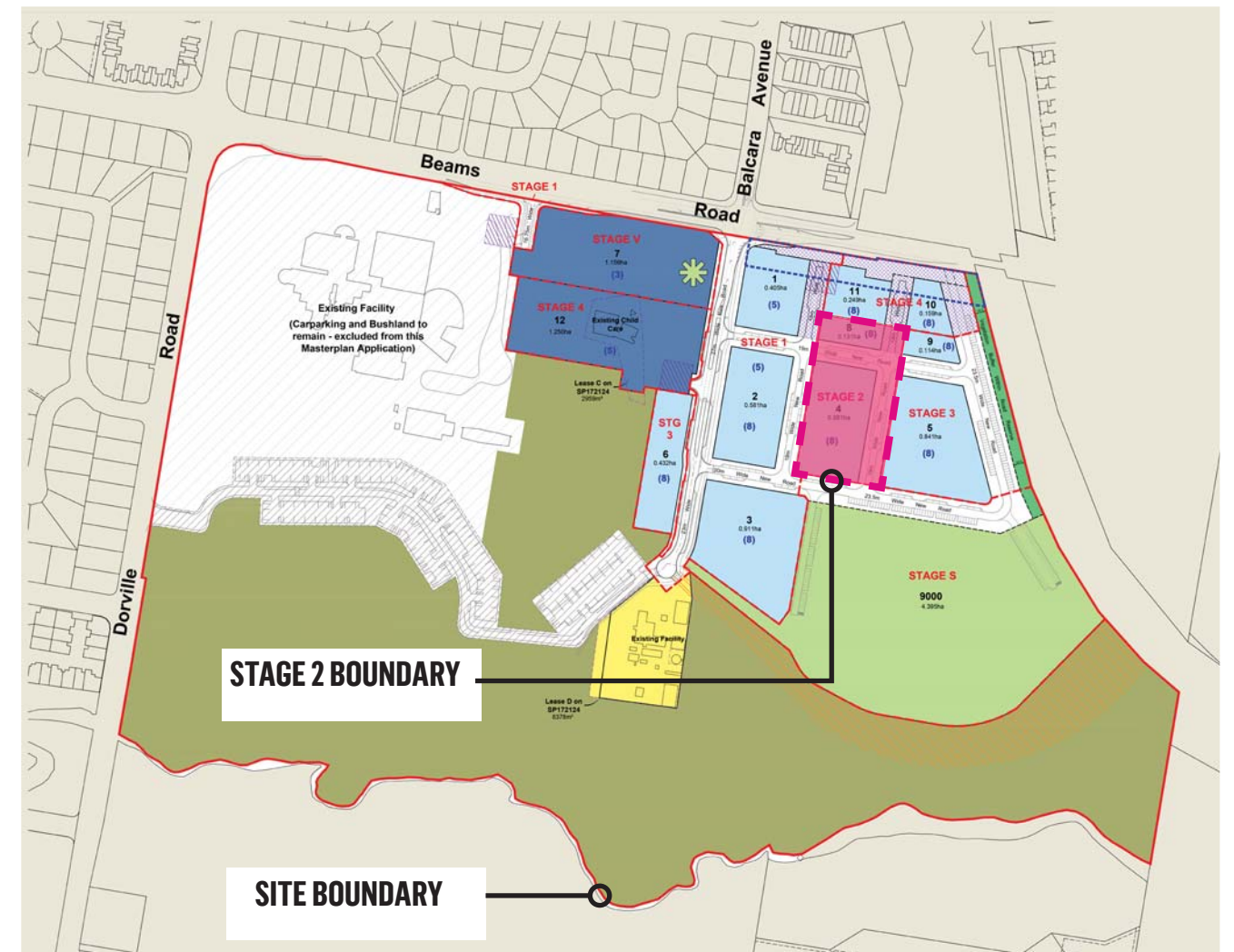
<b>1.0</b>	<b>CONTEXT</b>	<b>4</b>
<b>2.0</b>	<b>OVERALL MASTERPLAN</b>	<b>6</b>
<b>3.0</b>	<b>STAGE 2 MASTERPLAN</b>	<b>7</b>
<b>4.0</b>	<b>SECTIONS</b>	<b>8</b>
<b>5.0</b>	<b>PLANTING PALETTE</b>	<b>11</b>



# 1.0 CONTEXT



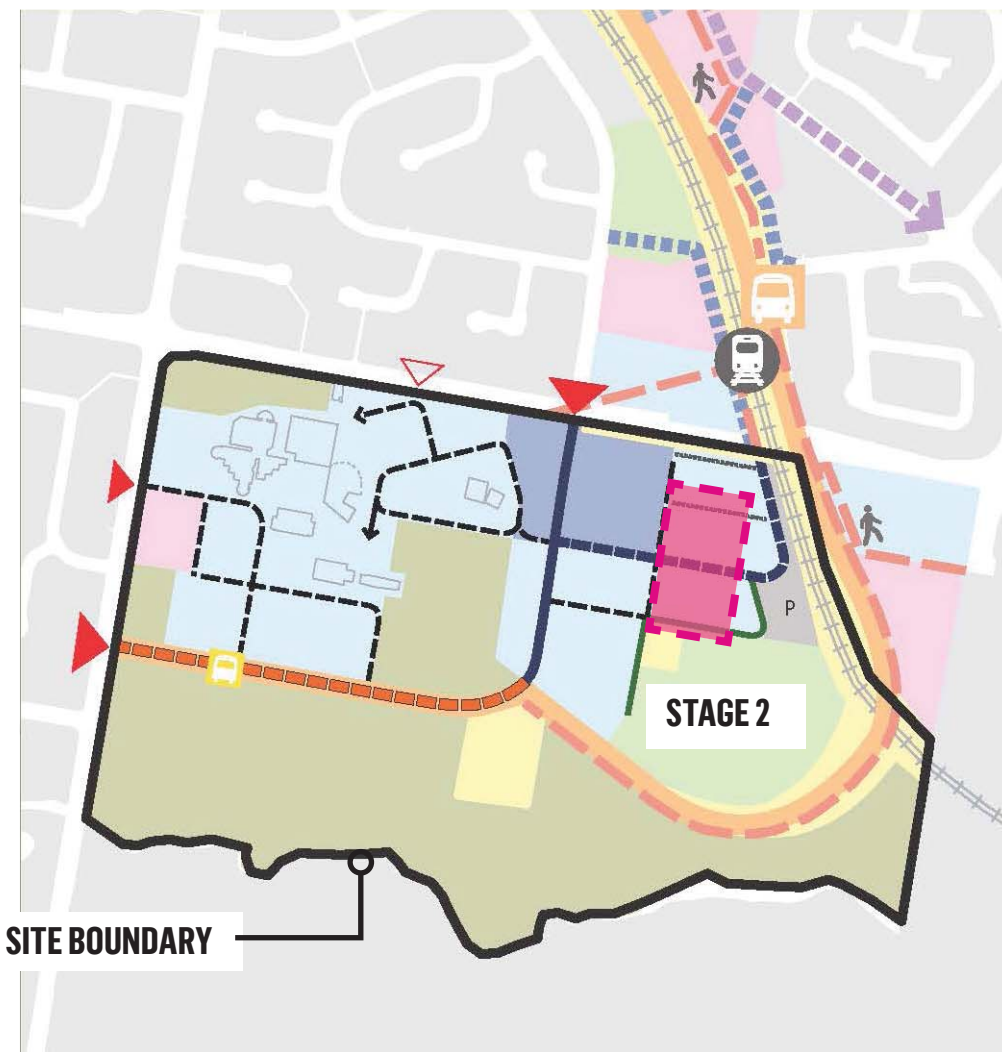
FITZGIBBON DEVELOPMENT AREA



CARSELDINE URBAN VILLAGE DEVELOPMENT AREA

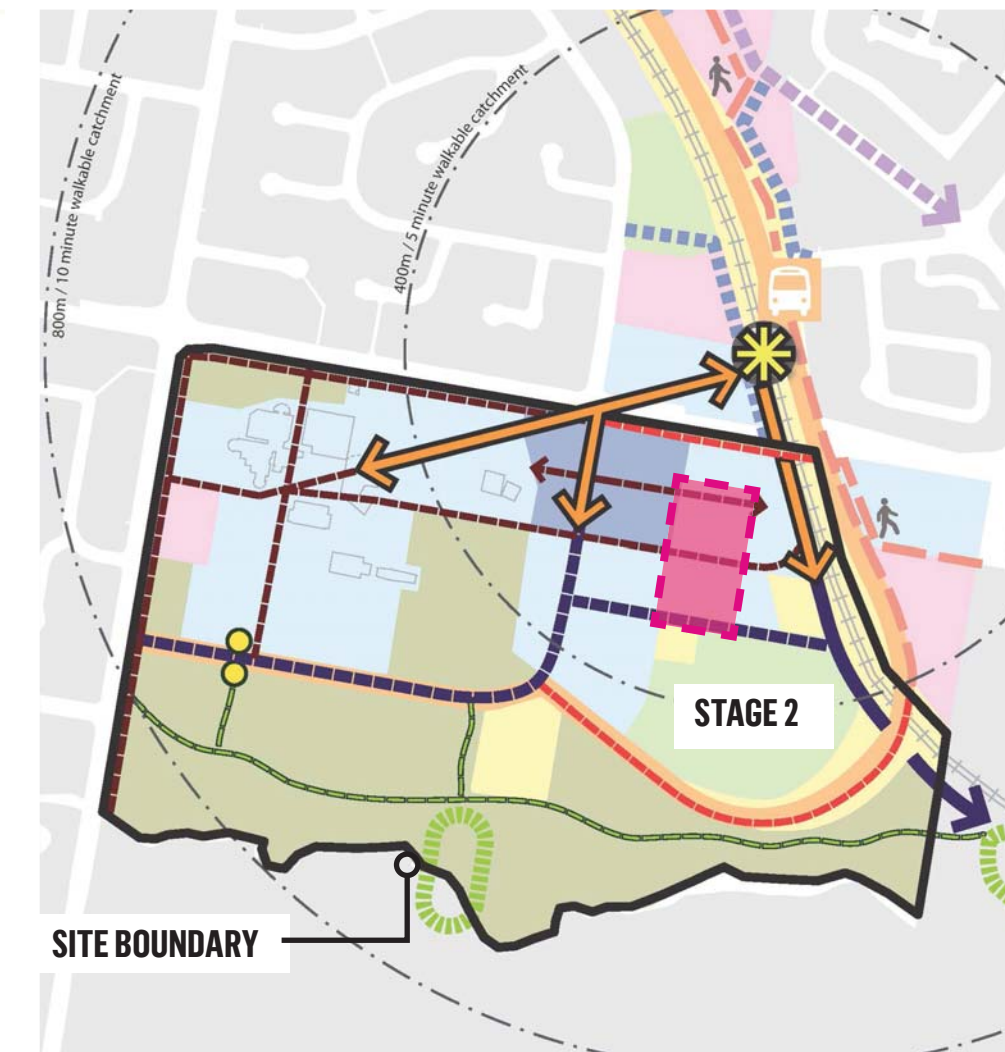


# ACCESS MOVEMENT AND CIRCULATION



CARSELDINE URBAN VILLAGE DEVELOPMENT AREA

# PEDESTRIAN AND CYCLE LINKS



CARSELDINE URBAN VILLAGE DEVELOPMENT AREA

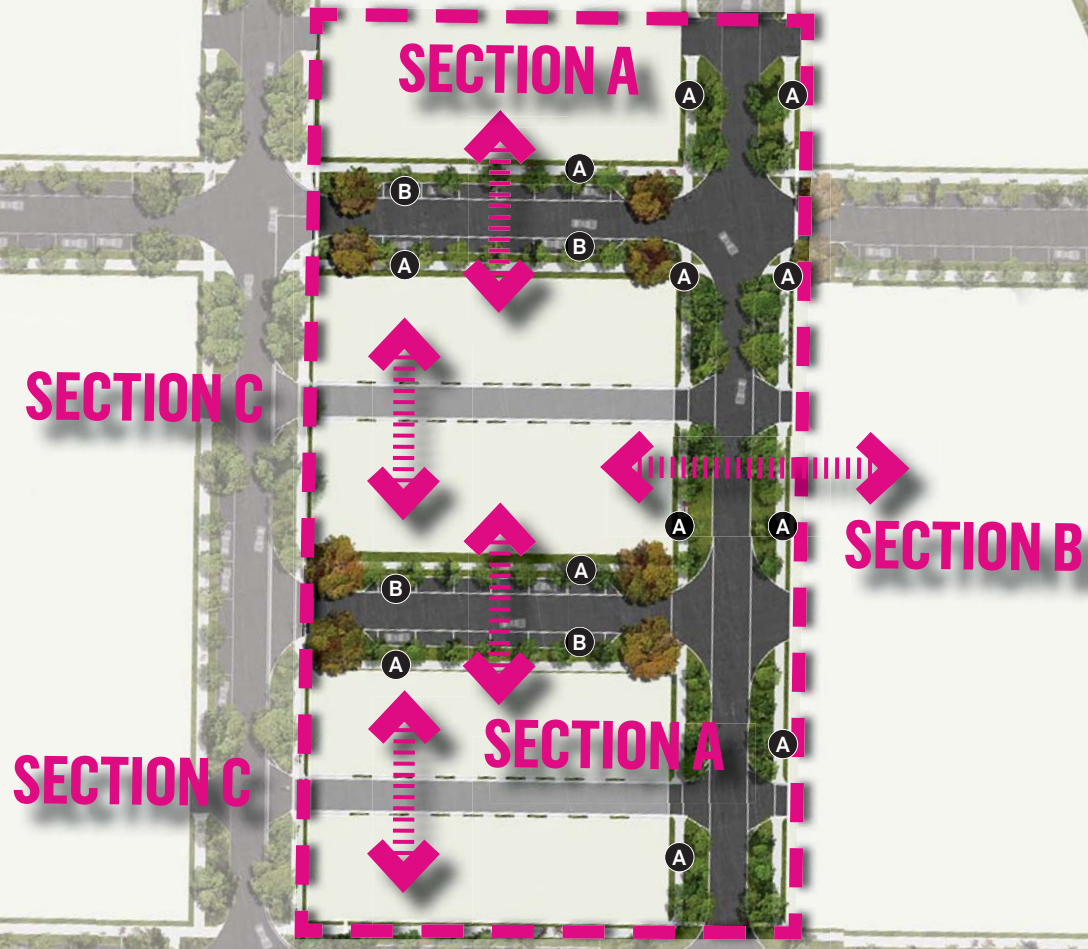


# 2.0 OVERALL MASTERPLAN





# 3.0 STAGE 2 MASTERPLAN



**LEGEND:**

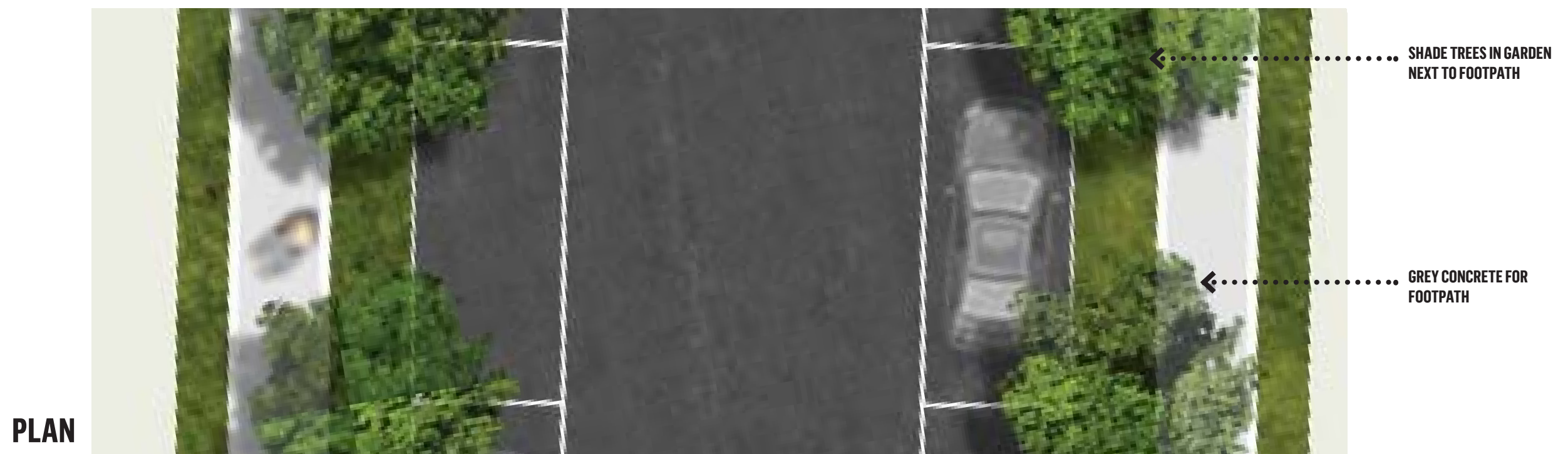
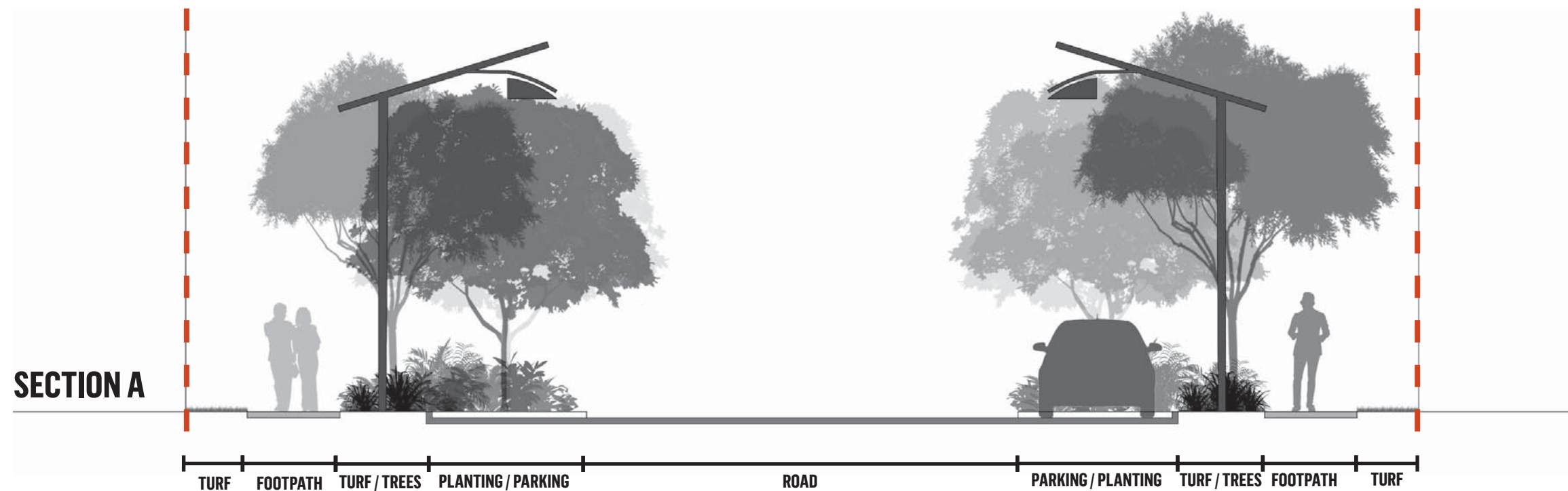
- A** PEDESTRIAN FOOTPATHS
- B** CAR PARKING

1:100 @ A3



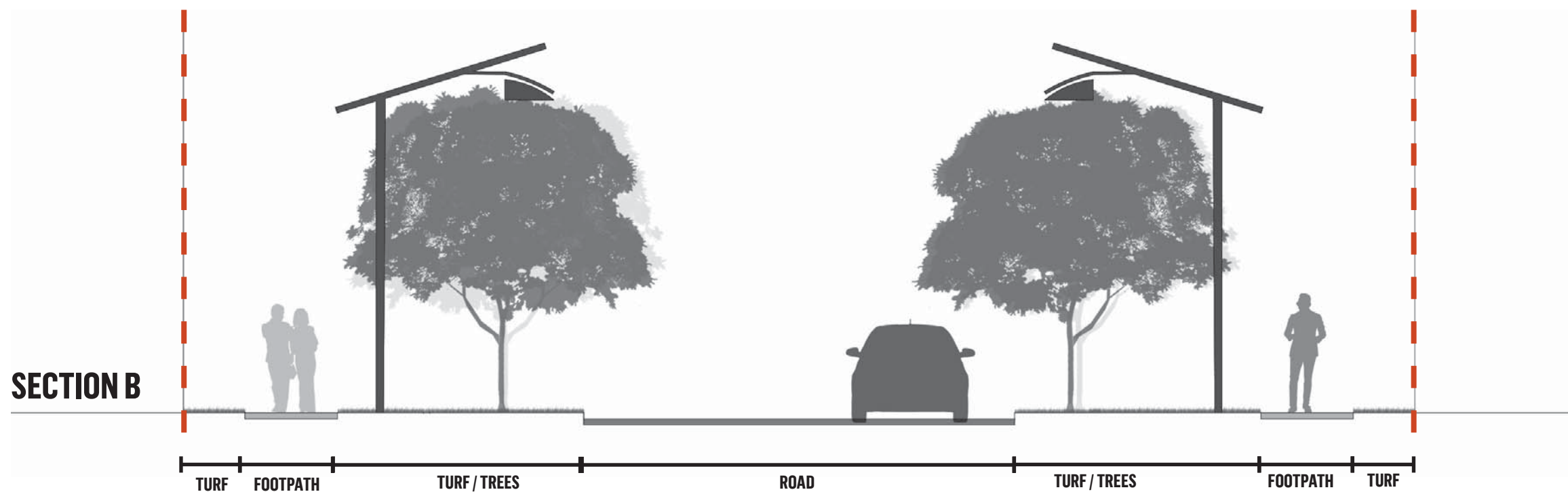
# 4.0 SECTION

## 4.1 ACCESS PLACE (19M WIDE ROAD RESERVE) - SECTION A



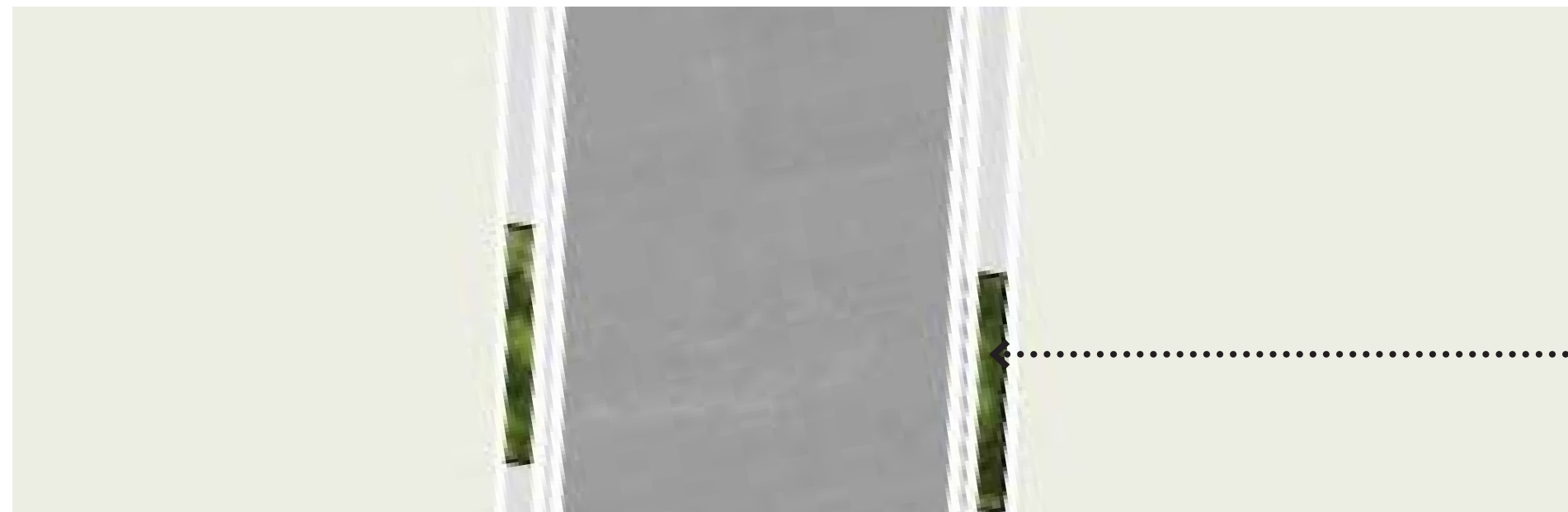
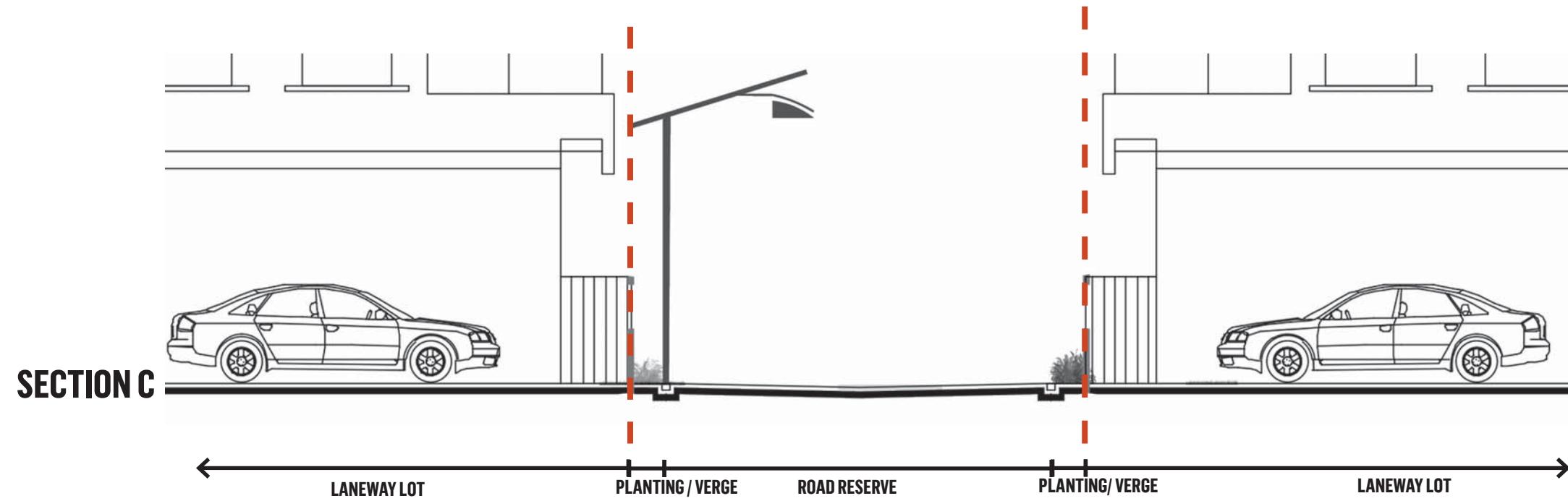


## 4.2 ACCESS PLACE (19M WIDE ROAD RESERVE) - SECTION B





### 4.3 LANEWAY (6.5M WIDE ROAD RESERVE) - SECTION C





# 5.0 PLANTING PALETTE

## 5.1 FEATURE TREES AT MAIN INTERSECTIONS

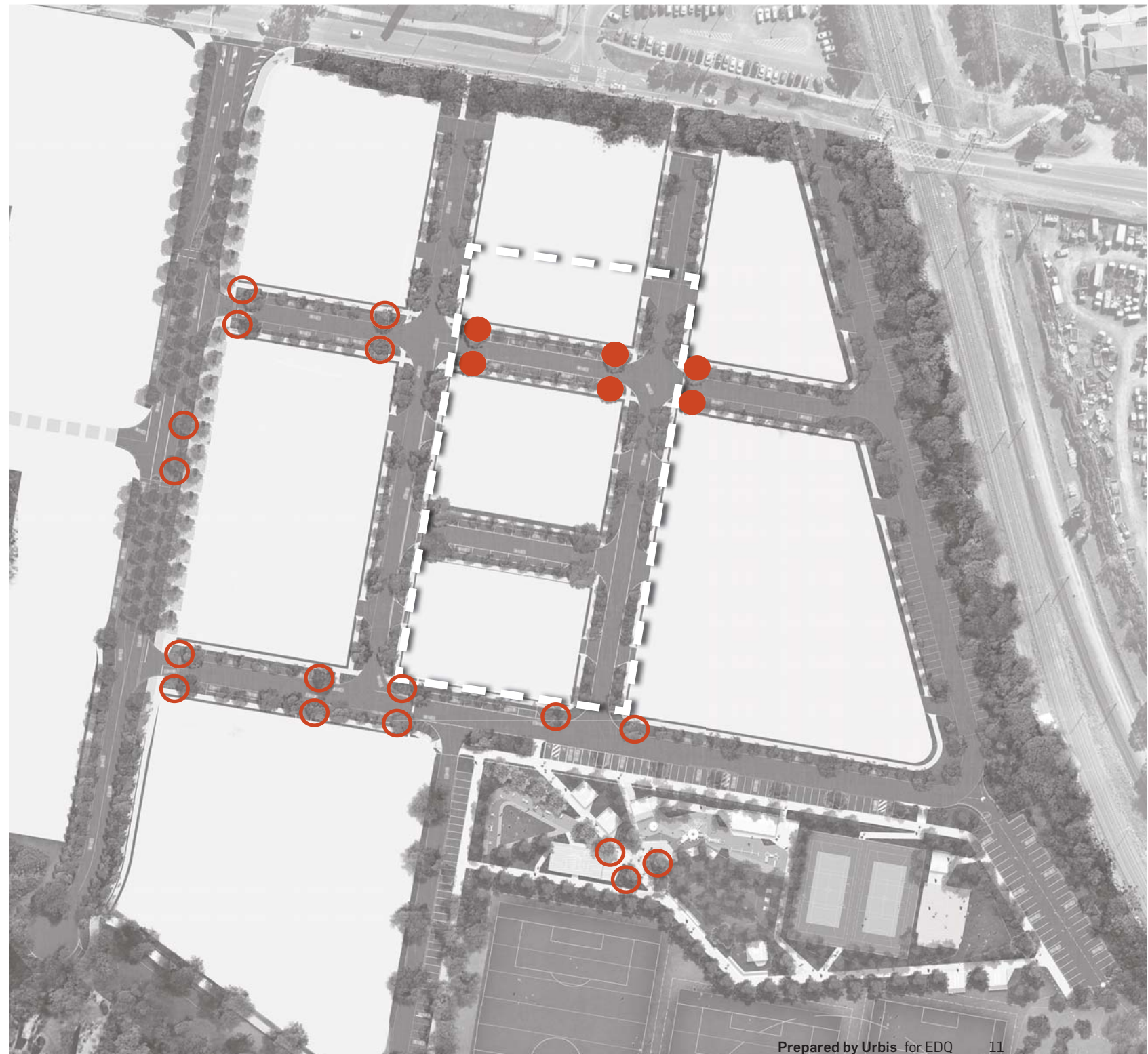


DELONIX REGIA AT DECISION MAKING POINTS

### Planting schedule

Botanical	Common		
FEATURE TREES			
● <i>Delonix regia</i>	Royal Poinciana	.....→	- STAGE 2
○ <i>Delonix regia</i>	Royal Poinciana	.....→	- EARLIER STAGES

**Note:** Street tree cells (stratavaults) are only proposed within the Main boulevard of the CUV – as such, they are not proposed within Stage 2.





## 5.2 TREES ON ACCESS PLACE



FLINDERSIA AUSTRALIS



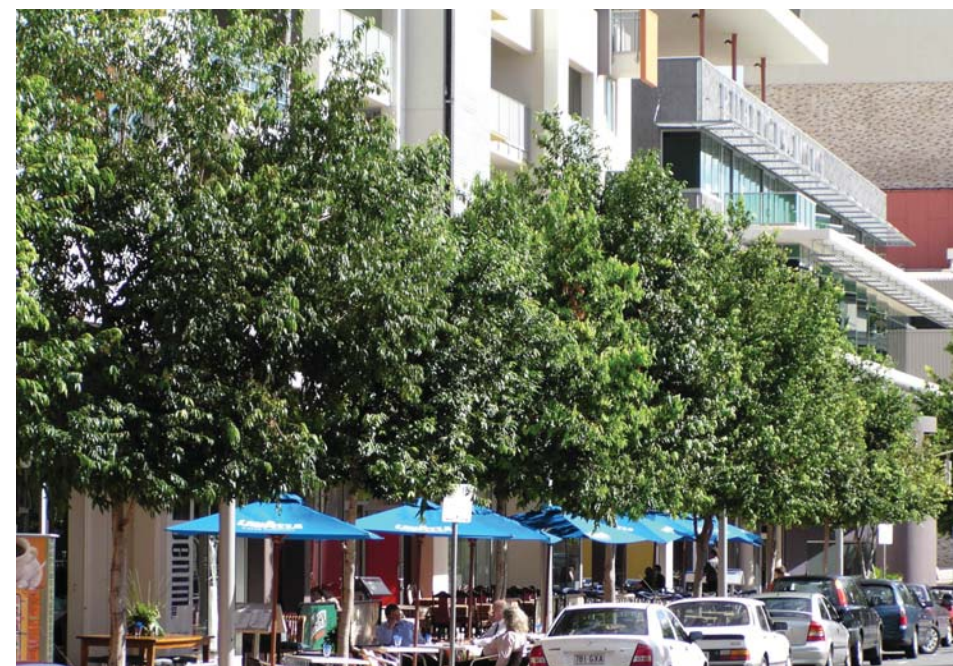
LOPHOSTEMON CONFERTUS



TRISTANIOPSIS LAURINA LUSCIOUS

### Planting schedule

Botanical	Common
TREES	
<i>Tristaniopsis laurina</i> 'Luscious'	Water Gum
<i>Buckinghamia celsissima</i>	Ivory Curl
<i>Flindersia australis</i>	Crow's Ash
<i>Lophostemon confertus</i>	Brush Box
<i>Waterhousia floribunda</i>	Weeping Lilli Pilli



WATERHOUSIA FLORIBUNDA



BUCKINGHAMIA CELSISSIMA



## 5.3 GROUNDCOVERS



### Planting schedule

Botanical	Common
GROUNDCOVERS	
<i>Alcantarea imperialis 'Rubra'</i>	Alcantarea imperialis 'Rubra'
<i>Crinum pedunculatum</i>	Swamp Lily
<i>Dietes bicolor</i>	Dietes
<i>Furcraea foetida</i>	Mauritius hemp
<i>Liriope muscari</i>	Evergreen Giant
<i>Lepidozamia peroffskyana</i>	Pineapple Zamia
<i>Molinieria capitata</i>	Palm grass
<i>Philodendron xanadu</i>	Xanadu Philodendron
<i>Phyllanthus myrtifolius</i>	Mousetail plant
<i>Rhapis excelsa</i>	Rhapis Palm
<i>Zamia furfuracea</i>	Cardboard Cycad





