



APPENDIX E

Landscape Concept Plans

Drawing No.: 9491 (Issue C)

Prepared by Saunders Havill Group
dated September 2019

PACIFIQ



MOUNT ELLIOT ROAD
FLINDERS LAKES

NEIGHBOURHOOD 3A & 3B

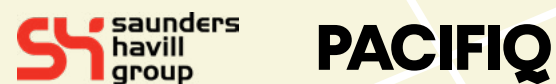
LANDSCAPE CONCEPT PLAN - 9491 SEPTEMBER 2019 - ISSUE C



FLINDERS
LAKES



MOUNT ELLIOT ROAD | FLINDERS LAKES



Mount Elliot Road - Flinders Lakes
Landscape Concept Package

Site:
Lot 3 Mount Elliot Road/Mount Flinders Lakes Drive
Flinders Lakes QLD 4285

Prepared by:
Saunders Havill Group
9 Thompson Street,
Bowen Hills Q 4006
T 1300 123 744
ABN 24 144 972 949

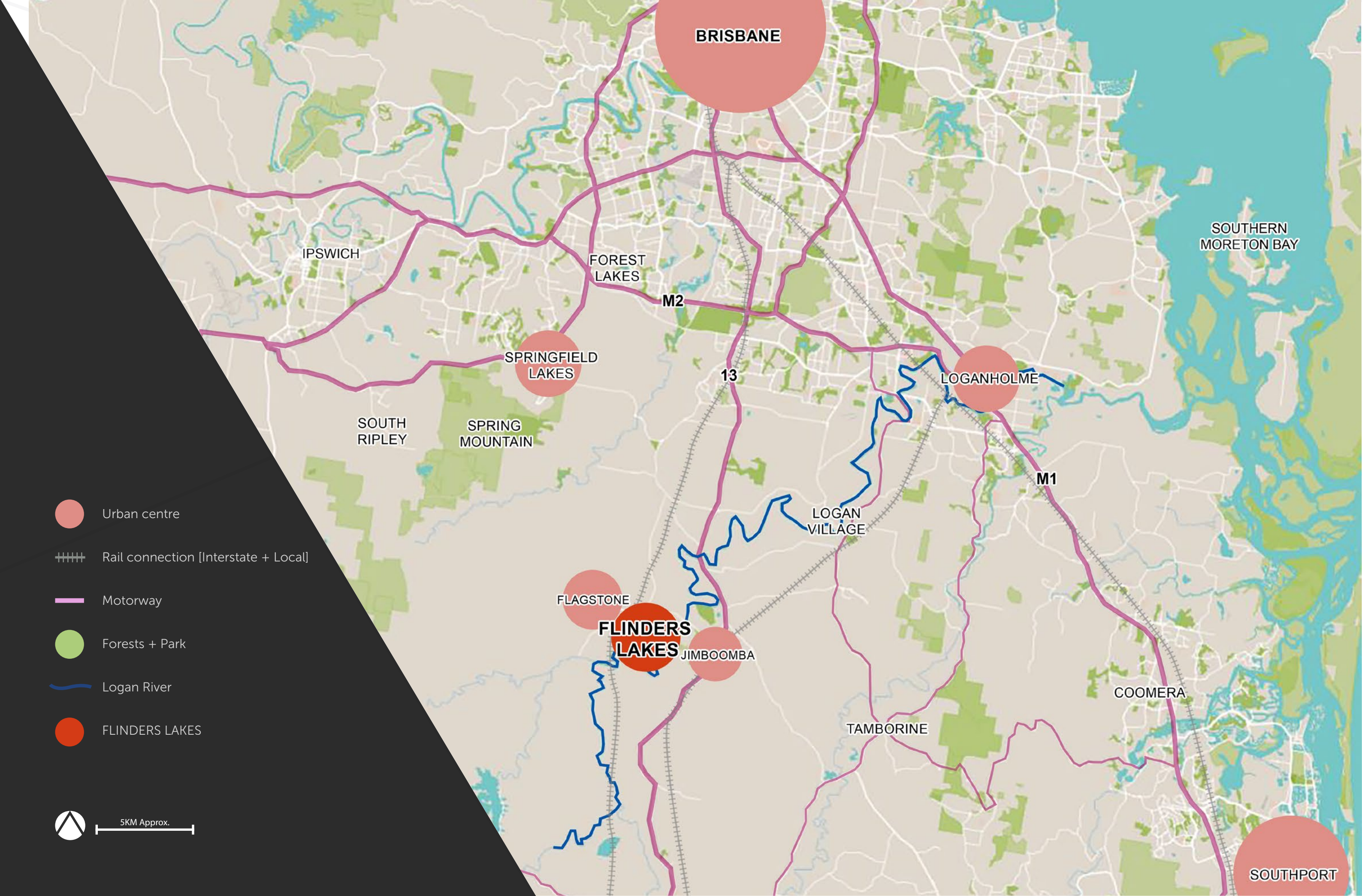
Prepared for:
Pacific International Development Corporation Pty Ltd
12 Nerang Street,
Nerang QLD 4211
T (07) 5500 4887

CONTENTS

Regional Context Plan	03
Site Analysis	04
3A Site Masterplan	05
Detailed Neighbourhood Recreation Park Plan	06
3B Site Masterplan	07
Detailed Local Recreation Park Plan	08
Proposed Internal Network	09
Indicative Finishes Palette	10
Indicative Plant Palette	11
EDQ Greenspace Compliance	12

Information within this document is the property of Saunders Havill Group Pty Ltd and is not authorised for reproduction or use in whole or part without written permission.

These plans have been prepared for the exclusive use of the client. Saunders Havill Group do not accept responsibility for any use of or reliance upon the contents of these drawings by any third party.





SITE BOUNDARY

EXISTING MINOR
WATER BODY

UNDULATED
PASTORAL AREAS

POCKETS OF
NATIVE VEGETATION



200m Approx.



LEGEND

- 1 NEIGHBOURHOOD REC PARK
- Refer to P06
- 2 REST NODE WITH BENCH SEATING
- 3 CONNECTING PATHWAY
- Refer to P09
- 4 PUBLIC OPEN SPACE/BASIN
- 5 STREET TREES
- 6 RESIDENTIAL LOTS
- 7 3B SITE PLAN
- Refer to P07



LEGEND

- 1** PLAY AREA
- Shade sails, soft fall & play equipment
- 2** INDICATIVE PATHWAYS
- 3** SHADE SHELTERS WITH PICNIC SETTINGS
- 4** CONNECTING PATHWAYS
- Refer to P09
- 5** TURF KICK-ABOUT AREA
- 6** HALF COURT
- 7** BICYCLE PARKING
- 8** LIGHTING
- 9** BENCH SEATS
- 10** RETAINING SANDSTONE BENCH SEATING
- 11** INDICATIVE STREET TREES
- Refer to Plant Palette



LEGEND

- 1 LOCAL RECREATION PARK
- Refer to P08
- 2 REST NODE WITH BENCH SEATING
- 3 CONNECTING PATHWAYS
- Refer to P09
- 4 PUBLIC OPEN SPACE/BASIN
- 5 STREET TREES
- 6 RESIDENTIAL LOTS
- 7 3A SITE PLAN
- Refer to P05



100m Approx.

3B SITE MASTERPLAN

MOUNT ELLIOT ROAD, FLINDERS LAKES - LANDSCAPE CONCEPT PLAN • SEPTEMBER 2019 • 9491 ISSUE C



LEGEND

- 1 PLAY AREA
- Shade sails, soft fall & play equipment
- 2 INDICATIVE PATHWAYS
- 3 SHADE SHELTERS WITH PICNIC SETTINGS
- 4 TURF KICK-ABOUT AREA
- 5 BENCH SEATS
- 6 CONNECTING PATHWAY
- Refer to P09
- 7 INDICATIVE STREET TREES
- Refer to Plant Palette



25m Approx.



PRELIMINARY INTERNAL
FOOTPATH CONNECTIONS
- Subject to final civil/traffic
engineer design.

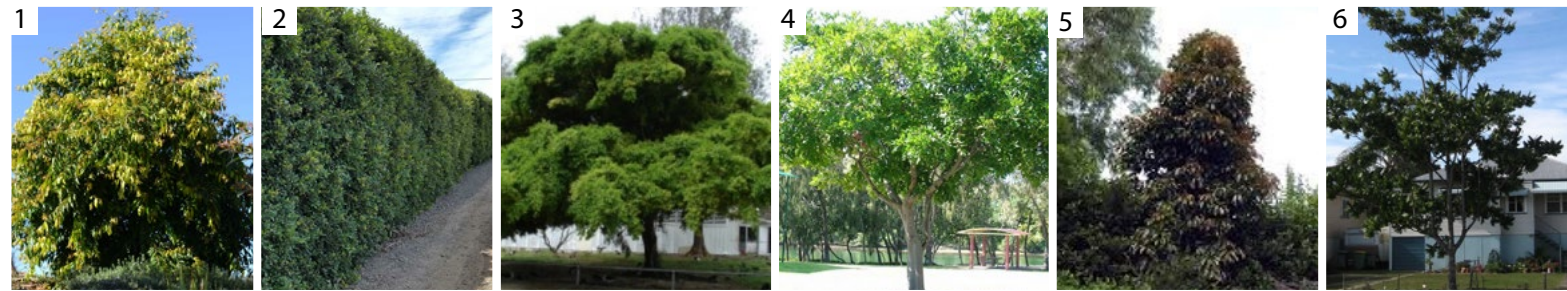
 FOOTPATH

 SHARED PATH



1. PATHWAYS
2. INTERACTIVE PLAY
3. WALLS/FENCING
4. SHELTERS
5. SEATING
6. BOLLARDS
7. WATER FEATURE





TREES

1. WATERHOUSEA floribunda
2. SYZYGIVM australe
3. FICUS benjamina
4. CUPANIOPSIS
5. ELAEOCARPUS eumundii
6. FLINDERSIA schottiana
7. LOPHOSTEMON confertus
8. BUCKINGHAMIA celissima
9. TRISTANIOPSIS laurina



SHRUBS

1. MELALEUCA viminalis
2. LEPTOSPERMUM scoparium
3. CORDYLINE rubra
4. MELALEUCA thymifolia
5. WESTRINGIA fruiticosa
6. STRELITZIA reginae
7. LEPTOSPERMUM polygalifolium
8. BAECKA virgata



GROUNDCOVERS

1. CAREX appressa
2. PHILODENDRON xanadu
3. LIRIOPE muscari
4. NANDINA domestica nana
5. TRACHELOSPERMUM jasminoides variegata
6. PHYLLANTUS minutiflora
7. LOMANDRA longfolia
8. LOMANDRA tanika
9. THEMEDA australia



EMBELLISHMENT	LINEAR PARK	SUBJECT SITE COMPLIANCE	NEIGHBOURHOOD PARK	SUBJECT SITE COMPLIANCE	LOCAL PARK	SUBJECT SITE COMPLIANCE
Internal access road(s) (1)						
Parking (cars)						
Parking (bicycles)			✓	✓		
Lighting			✓	✓		
Toilets						
Paths (pedestrian/cycle)	✓	✓	✓	✓		✓
Shade Structures			✓	✓		✓
Table and seating - uncovered	✓	✓	✓	✓		✓
Table and seating - covered			✓	✓		✓
Barbecues						
Play areas/facilities			✓	✓		✓
Informal active recreation spaces			✓	✓		✓
Half-court, rebound wall or similar			✓	✓		
Sports fields (3)						
Spectator seating area (2)						
Courts (3)						
Community events space						

Notes:

(1) Where required for internal access only.

(2) Spectator seating may be provided by grass mounds where appropriate.

(3) Sports fields and courts should comply with accepted standards for the particular sport.