

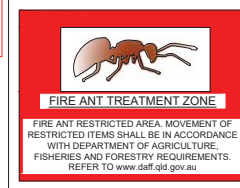
# PEBBLE CREEK DEVELOPMENT ENTRY ROAD-ENTRY STATEMENT LANDSCAPE WORKS

PREPARED FOR ORCHARD (PEBBLE CREEK) DEVELOPMENTS PTY LTD.

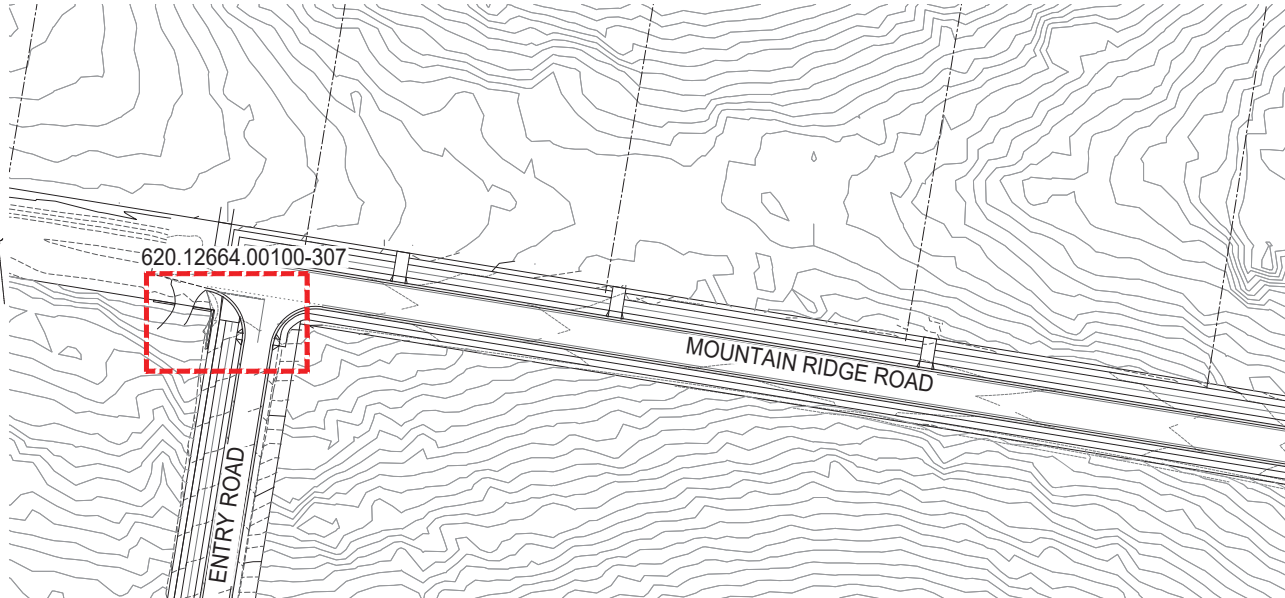
PLANS AND DOCUMENTS  
referred to in the PDA  
DEVELOPMENT APPROVAL  
Approval no: DEV2019/1041  
Date: 18 July 2019



DEV REFERENCE NUMBER:  
DEV2017/887



**A** LOCATION PLAN  
ANTS



**B** SHEET LAYOUT  
NTS

## INSPECTION SCHEDULE:

ITEM	DATE	ATTENDEES
Pre-Start Meeting	TBC	SLR Consulting EDQ Logan City Council Landscape contractor
Practical Completion Inspection	TBC	SLR Consulting EDQ Landscape contractor
On-Maintenance Inspection	TBC	SLR Consulting EDQ Landscape contractor Logan City Council
Off-Maintenance	TBC	SLR (Qld) Pty Ltd. EDQ Logan City Council Landscape contractor

## STANDARD DOCUMENTS:

Standard Council drawings & Economic Developments QLD referenced within this drawing set:

- LANDSCAPE-DEVELOPMENT-MANUAL-JULY-2010
- LOGAN PLANNING SCHEME 2015 VERSION 5.1
- LCC800242\_TYPICAL FOOTPATH SETOUT DETAIL
- EDQ GUIDELINE 12

Standard Council drawings are available for download at  
<http://www.logan.qld.gov.au/planning-and-building/planning-and-development/superseded-planning-schemes/logan-planning-scheme/logan-planning-scheme-2006/policies2>

<https://www.logan.qld.gov.au/planning-and-building/planning-and-development/logan-planning-scheme/logan-planning-scheme-version-5.1>

## SERVICES:

CONTRACTOR TO DOWNLOAD 'AS CONSTRUCTED' DRAWINGS OF MAINS SERVICES  
THE LANDSCAPE CONTRACTOR SHALL DETERMINE THE EXACT LOCATION OF SERVICES ON SITE PRIOR TO COMMENCEMENT OF WORKS.

ALL TREES MUST BE INSTALLED TO ACHIEVE OFFSET FROM SERVICES AS PER LOGAN CITY COUNCIL STANDARDS. IN ALL CASES, THE FOLLOWING MINIMUM OFFSETS FROM KNOWN FEATURES APPLY:

- Streetlights 8.0 metres
- Driveways 2.5 metres
- Services pits/inspection boxes 0.8 metres (With installation of root barrier)
- Stormwater kerb adaptors 0.8 metres (With installation of root barrier)
- Kerbs 0.6 metres
- Pedestrian crossings & bus stops, 18.0 metres on approach & 3.0 metres on departure
- Energex pad mounted transformer 2.5 metres
- Fire hydrants 0.8 metres (With installation of root barrier)
- Receding corner 3.0 metres
- Approaching corner 18.0 metres
- Power pole 2.5 metres

## DRAWING REGISTER:

620.12664.00300 - 100	COVERSHEET	620.12664.00300 - 307	LANDSCAPE PLAN
620.12664.00300 - 101	LEGEND	620.12664.00300 - 308	REMOVED FROM THIS ISSUE
620.12664.00300 - 102	PLANT SCHEDULE	620.12664.00300 - 309	REMOVED FROM THIS ISSUE
620.12664.00300 - 103	SAFETY IN DESIGN	620.12664.00300 - 310	REMOVED FROM THIS ISSUE
620.12664.00300 - 104	SAFETY IN DESIGN	620.12664.00300 - 311	REMOVED FROM THIS ISSUE
620.12664.00300 - 105	MATERIALS AND FINISHES SCHEDULE		
620.12664.00300 - 106	REMOVED FROM THIS ISSUE	620.12664.00300 - 800	LANDSCAPE DETAILS
620.12664.00300 - 107	REMOVED FROM THIS ISSUE	620.12664.00300 - 801	LANDSCAPE DETAILS
620.12664.00300 - 108	MATERIALS AND FINISHES SCHEDULE	620.12664.00300 - 802	LANDSCAPE DETAILS
620.12664.00300 - 109	MATERIALS AND FINISHES SCHEDULE	620.12664.00300 - 803	REMOVED FROM THIS ISSUE
620.12664.00300 - 110	REMOVED FROM THIS ISSUE	620.12664.00300 - 804	REMOVED FROM THIS ISSUE
620.12664.00300 - 111	REMOVED FROM THIS ISSUE	620.12664.00300 - 805	REMOVED FROM THIS ISSUE
620.12664.00300 - 112	REMOVED FROM THIS ISSUE	620.12664.00300 - 806	LANDSCAPE DETAILS
620.12664.00300 - 113	REMOVED FROM THIS ISSUE	620.12664.00300 - 807	LANDSCAPE DETAILS
620.12664.00300 - 114	REMOVED FROM THIS ISSUE	620.12664.00300 - 808	LANDSCAPE DETAILS
		620.12664.00300 - 809	LANDSCAPE DETAILS
620.12664.00300 - 300	REMOVED FROM THIS ISSUE	620.12664.00300 - 810	LANDSCAPE DETAILS
620.12664.00300 - 301	REMOVED FROM THIS ISSUE	620.12664.00300 - 811	LANDSCAPE DETAILS
620.12664.00300 - 302	REMOVED FROM THIS ISSUE	620.12664.00300 - 812	REMOVED FROM THIS ISSUE
620.12664.00300 - 303	REMOVED FROM THIS ISSUE	620.12664.00300 - 813	REMOVED FROM THIS ISSUE
620.12664.00300 - 304A / 304B	REMOVED FROM THIS ISSUE		
620.12664.00300 - 305A / 305B	REMOVED FROM THIS ISSUE		
620.12664.00300 - 306A / 306B	REMOVED FROM THIS ISSUE		

\* Dates are tentative for preliminary programming purposes only and may change as a result of delays from Council approval, civil works programming etc.

REVISIONS	DATE	DESCRIPTION
-	-	-
E	13.05.2019	FOR APPROVAL
D	29.03.2019	FOR TENDER
C	13.03.2019	FOR CERTIFICATION
B	19.12.2018	REVISION FOR CLIENT REVIEW
A	16.11.2018	REVISED FOR CLIENT REVIEW

THIS DRAWING IS THE PROPERTY OF SLR CONSULTING AUSTRALIA AND MUST NOT BE RETAINED, COPIED OR USED WITHOUT THE CONSENT OF THE COMPANY.

THIS DRAWING IS NOT TO BE USED FOR CONSTRUCTION UNLESS ENDORSED BELOW

Responsible Principal Signature \_\_\_\_\_ Date \_\_\_\_\_

DRAWN: AC	DATE: 10.10.2018
DESIGN: CW	DATE: 08.10.2018
DRG. CHECK: DB	DATE: 07.03.2019
DES. CHECK: DB	DATE: 07.03.2019



15 ASTOR TERRACE  
SPRING HILL  
QUEENSLAND 4000  
AUSTRALIA  
T: 61 7 3585 4800  
F: 61 7 3585 4801  
www.slrconsulting.com

The content contained within this document may be based on third party data.  
SLR Consulting Australia Pty Ltd does not guarantee the accuracy of any such information.



FOR APPROVAL

PROJECT: PEBBLE CREEK DEVELOPMENT - MOUNTAIN RIDGE AND ENTRY ROAD			
DRAWING TITLE: COVERSHEET			
A1	DO NOT SCALE THIS DRAWING IF IN DOUBT ASK	SCALE: AS SHOWN	DRAWING NUMBER: 620.12664.00300-100
			ISSUE: E

	A	B	C	D	E	F	G	H	I	J	K	L	M	N	O	P	Q	R	S	T	U	V	W	X	Y
1	LEGEND																								
2	EXTENT OF WORKS						NATURAL SANDSTONE BOULDER TYPE 2 (500x500) REFER LD05/815 AND SPECIFICATION						GRADING/ SETOUT +TW 3.370 TOP OF WALL HEIGHT						SEWER BY OTHERS REFER TO ENGINEER DRAWING PACKAGE						
3	PROPERTY BOUNDARY						NATURAL SANDSTONE BOULDER TYPE 3 (300x300) REFER LD05/815 AND SPECIFICATION						+BW 2.370 BOTTOM OF WALL HEIGHT						STORM WATER BY OTHERS REFER TO ENGINEER DRAWING PACKAGE						
4	EDGING TYPE 1- CONCRETE EDGE (TYP 125 x 125mm) REFER TO LD02/802 AND SPECIFICATION						CONCRETE TYPE 1 - BROOM FINISHED CONCRETE REFER TO LD01/815 AND SPECIFICATION						FLUSH FINISHED LEVEL						WATER BY OTHERS REFER TO ENGINEER DRAWING PACKAGE						
5	EDGING TYPE 2- TIMBER EDGE REFER TO LD03/802 AND SPECIFICATION						CONCRETE TYPE 2- ROCK SALT FINISH COLOURED CONCRETE REFER TO LD01/815 AND SPECIFICATION						ROAD CHAINAGE						NBN BY OTHERS REFER TO ENGINEER DRAWING PACKAGE						
6	FENCING TYPE 1A- 1900mm HIGH ACOUSTIC FENCE REFER TO LD01/804, LD01/803 AND SPECIFICATION						CONCRETE TYPE 3- EXPOSED AGGREGATE COLOURED CONCRETE REFER TO LD01/815 AND SPECIFICATION						EXISTING CONTOURS (0.2m CONTOURS) TO BE RETAINED						ELECTRICAL BY OTHERS REFER TO ELECTRICAL ENGINEER DRAWING PACKAGE						
7	FENCING TYPE 1B- 1900mm HIGH ACOUSTIC FENCE WITH RETAINING WALL REFER TO LD02/804 AND SPECIFICATION						DANLEY DIAMOND DOWELL JOINT REFER TO LD04/815 AND SPECIFICATION						DESIGN CONTOURS (0.2m CONTOURS) BY OTHERS						REFER TO ELECTRICAL ENGINEER DRAWING PACKAGE STREET LIGHT SCHEDULE - RATE 2						
8	FENCING TYPE 2A- 1900mm HIGH FEATURE ACOUSTIC PANEL REFER TO LD02/803, LD01/805 AND SPECIFICATION						PLANTING						50M WATERWAY BUFFER												
9	FENCING TYPE 2B- 1900mm HIGH FEATURE ACOUSTIC PANEL WITH RETAINING WALL REFER TO LD02/805 AND SPECIFICATION						EXISTING TREE TO BE RETAINED REFER TO LD05/800, LD06/800 AND SPECIFICATION						100M WATERWAY BUFFER												
10	ENTRY WALL REFER TO LD01/806, LD01/807, LD01/808 AND SPECIFICATION						PROPOSED TREE REFER TO LD01/800, LD02/800, LD03/800, LD04/800 AND SPECIFICATION						1 IN 5 ARI FLOOD												
11	ENTRY FEATURE TIMBER POSTS REFER TO LD02/808, LD01/809 AND SPECIFICATION						PROPOSED SHRUBS REFER TO LD01/801, LD04/801 AND SPECIFICATION						APPROX HIGH BANK												
12	NEIGHBORING LOT STRUCTURES TO BE RETAINED ON PRIVATE PROPERTY						PLANTING TYPE 1- FEATURE PLANTING REFER TO LD01/801, LD04/801 AND SPECIFICATION						FLAGSTONE CREEK CENTRE LINE												
13	TURF REFER TO LD06/801, LD01/802 AND SPECIFICATION						PLANTING TYPE 2- REVEGETATION PLANTING REFER TO LD02/801 AND SPECIFICATION						EXISTING FENCING TO BE RETAINED												
14	GRASS SEEDING BY CIVIL CONTRACTOR						PLANTING TYPE 3- REVEGETATION PLANTING WITH JUTE MAT REFER TO LD02/801, LD03/801 AND SPECIFICATION						ENTRY BRIDGE GUARDRAILS BY OTHERS												
15	PLANTING MODULE 1 REFER TO LD01/812, LD02/812 AND SPECIFICATION												ROCK ARMORING UNDER ENTRY BRIDGE BY OTHERS												
16	PLANTING MODULE 2 REFER TO LD01/813, LD02/813 AND SPECIFICATION												MULCH ONLY (BY CIVIL CONTRACTORS) BY OTHERS												
17	MULCH ONLY BY LANDSCAPE CONTRACTOR REFER TO LD05/801 AND SPECIFICATION																								
18	STANDARD BOLLARD REFER TO LD02/814 AND SPECIFICATION																								
19	FEATURE BOLLARD REFER TO LD01/814 AND SPECIFICATION																								
20	REMOVABLE BOLLARD REFER TO LD03/814 AND SPECIFICATION																								
21	NATURAL SANDSTONE BOULDER TYPE 1 (1000x1000) REFER LD05/815 AND SPECIFICATION																								
22																									
23																									
24																									
25																									
26																									
27																									
28																									
29																									
30																									
31																									
32																									
33																									
34																									
35																									
36																									
37																									
38																									
39																									
40																									
41																									
42																									
43																									
44																									
45																									
46																									
47																									
48																									
49																									
50																									
51																									
52																									
53																									
54																									
55																									
56																									
57																									
58																									
59																									
60																									
61																									
62																									
63																									
64																									
65																									
66																									
67																									
68																									
69																									
70																									
71																									
72																									
73																									
74																									
75																									
76																									
77																									
78																									
79																									
80																									
81																									
82																									
83																									
84																									
85																									
86																									
87																									
88																									
89																									
90																									
91																									
92																									
93																									
94																									
95																									
96																									
97																									
98																									
99																									
100																									
101																									
102																									
103																									
104																									
105																									
106																									
107																									
108																									
109																									
110																									
111																									
112																									
113																									
114																									
115																									
116																									
117																									
118																									
119																									
120																									
121																									
122																									
123																									
124																									
125																									
126																									
127																									
128																									
129																									
130																									
131																									
132																									
133																									
134																									
135																									
136																									
137																									
138																									
139																									
140																									
141																									
142																									
143																									
144																									
145																									
146																									
147																									
148																									
149																									
150																									
151																									
152																									
153																									
154																									
155																									
156																									
157																									
158																									
159																									
160																									
161																									
162																									
163																									
164																									
165																									
166																									
167																									
168																									
169																									
170																									
171																									
172																									
173																									
174																									
175																									
176																									
177																									
178																									
179																									
180																									
181																									
182																									
183																									
184																									
185																									
186																									
187																									
188																									
189																									
190																									
191																									
192																									
193																									
194																									
195																									
196																									
197																									
198																									
199																									
200																									
201																									
202																									
203																									
204																									
205																									
206																									
207																									
208																									
209																									
210																									
211																									
212																									
213																									
214																									
215																									
216																									
217																									
218																									
219																									
220																									
221																									
222																									
223																									
224																									
225																									
226																									
227																									
228																									
229																									
230																									
231																									
232																									
233																									
234																									
235																									
236																									
237																									
238																									
239																									
240																									
241																									
242																									
243																									
244																									
245																									
246																									
247																									
248																									
249																									
250																									
251																									
252																									
253																									
254																									
255																									
256																									
257																									
258																									
259																									
260																									
261																									
262																									
263																									
264																									
265																									
266																									
267																									

1

2

3

4

5

6

7

8

9

10

11

12

13

14

15

16

17

18

A

B

C

D

E

F

G

H

I

J

K

L

M

N

O

P

Q

R

S

T

U

V

W

X

Y

PLANTING SCHEDULE

PEBBLE CREEK- ENTRY ROAD (PEBBLE CREEK WAY)

ENTRY STATEMENT PLANTING WORKS

The quantities provided are to assist the Landscape Contractor in preparing a lump sum price for the works on a competitive basis. It is the contractors responsibility to satisfy themselves of the plant quantities and advise SLR of any discrepancies during the pricing period.

CODE	SPECIES NAME	COMMON NAME	SUPPLY SIZE	POT SIZE	STAKE	QTY
Trees						
ARA cun	Araucaria cunninghamii	Hoop Pine	6m high x calliper 80-90mm dia	Ex-Ground		3
Groundcovers						
LIR mus	Liriope muscari	Evergreen Giant	0.3m high x 0.2m spread	140mm		75
MEL CT	Melaleuca linariifolia 'Claret Tops'	Claret Tops	0.3m high x .2m spread	140mm		24
				Total		102

CONSULTANT PROJECT

620.12664

FULL SIZE ON ORIGINAL

0

10

20

30

40

50

60

70

80

90

100

A1

REVISIONS

	DATE	DESCRIPTION	
-	-	-	-
-	-	-	-
E	13.05.2019	FOR APPROVAL	CW
D	29.03.2019	FOR TENDER	CW
C	13.03.2019	FOR CERTIFICATION	CW
B	19.12.2018	REVISION FOR CLIENT REVIEW	CW
A	16.11.2018	REVISED FOR CLIENT REVIEW	CW

THIS DRAWING IS THE PROPERTY OF SLR CONSULTING AUSTRALIA AND MUST NOT BE RETAINED, COPIED OR USED WITHOUT THE CONSENT OF THE COMPANY.

THIS DRAWING IS NOT TO BE USED FOR CONSTRUCTION UNLESS ENDORSED BELOW

Responsible Principal Signature

Date

DRAWN: AC

DATE: 10.10.2018

DESIGN: CW

DATE: 08.10.2018

DRG. CHECK: DB

DATE: 07.03.2019

DES. CHECK: DB

DATE: 07.03.2019

SLR

15 ASTOR TERRACE  
SPRING HILL  
QUEENSLAND 4000  
AUSTRALIA  
T: 61 7 3585 4800  
F: 61 7 3585 4801  
www.slrconsulting.com

NO ENTRY

DIAL 1100

BEFORE YOU GO

FOR APPROVAL

The content contained within this document may be based on third party data.  
SLR Consulting Australia Pty Ltd does not guarantee the accuracy of any such information.

PROJECT:  
PEBBLE CREEK DEVELOPMENT - MOUNTAIN RIDGE AND ENTRY ROAD

DRAWING TITLE:  
PLANT SCHEDULE

A1

DO NOT SCALE THIS DRAWING  
IF IN DOUBT ASK


SCALE:  
AS SHOWN

DRAWING NUMBER:  
620.12664.00300-102

ISSUE:  
E

PLANS AND DOCUMENTS referred to in the PDA  
DEVELOPMENT APPROVAL

Approval no: DEV2019/1041  
Date: 18 July 2019




1\Projects\SLR\620-BNE\620-BNE\620-12664 Pebble Creek Development\001 Pebble Creek\003 Mountain Ridge Rd and Entry Rd\07 SLR Detail\01 Drawings\07 Current Drawings\CSSES\_740511\_Fr Approval\620.12664.00300\_100 Coversheet.dwg

SLR 

PROJECT: PEBBLE CREEK DEVELOPMENT - MOUNTAIN RIDGE AND ENTRY ROAD				ISSUED FOR:
DRAWING TITLE:  MATERIALS AND FINISHES SCHEDULE				
A1	DO NOT SCALE THIS DRAWING IF IN DOUBT ASK	SCALE: AS SHOWN	DRAWING NUMBER: 620 12664 00300-105	ISSUED BY: E

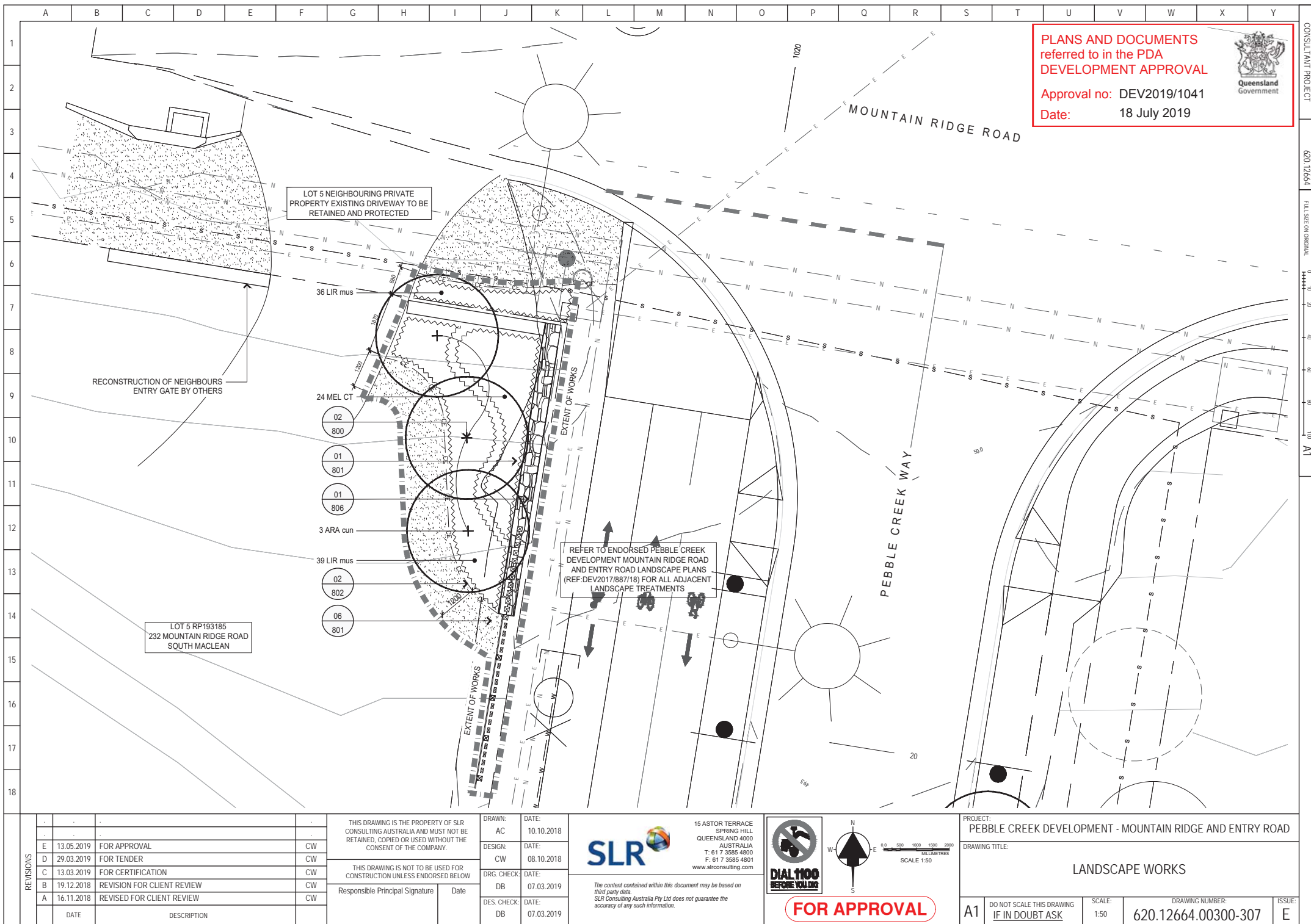


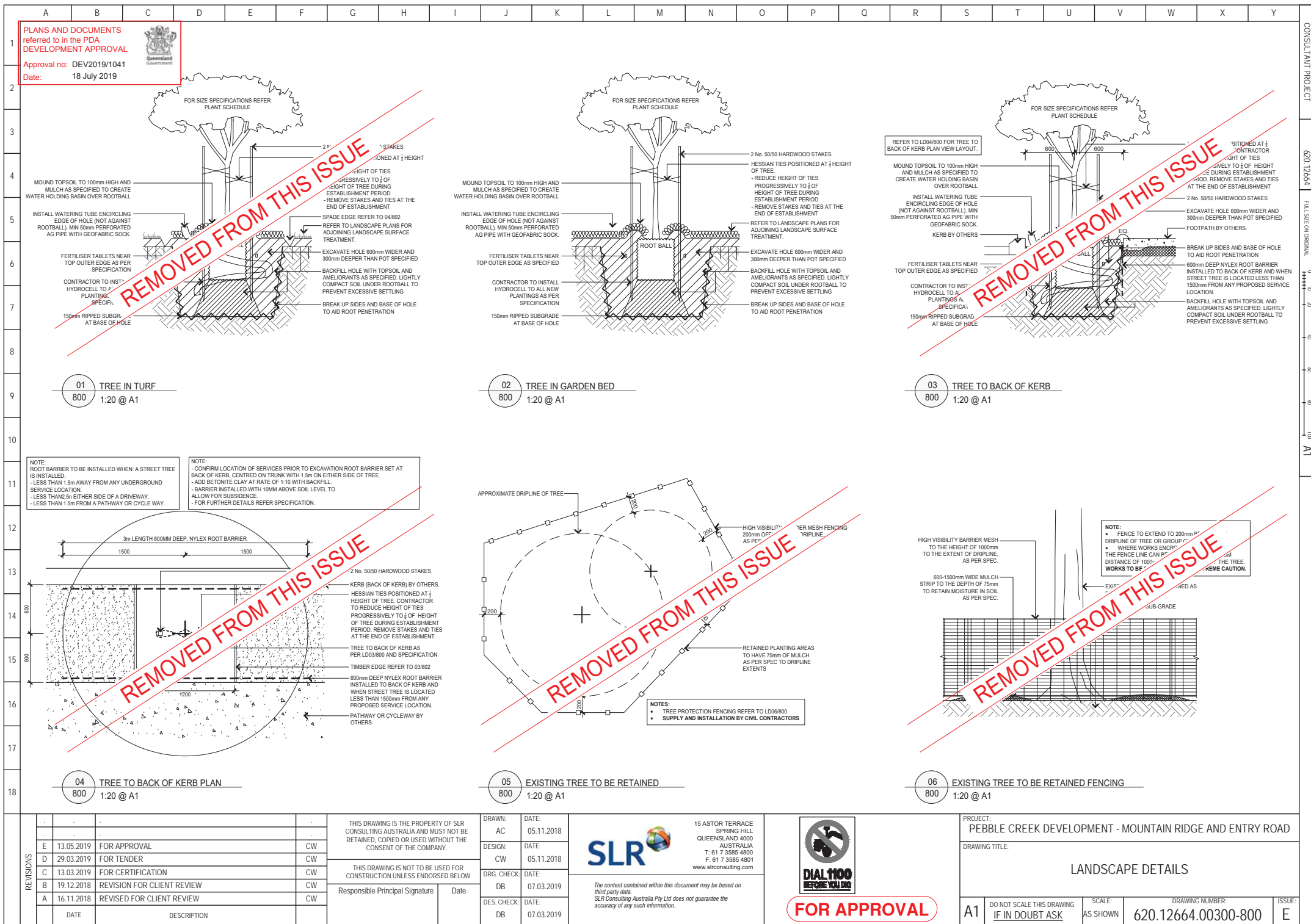


<p><b>PLANS AND DOCUMENTS</b> referred to in the PDA <b>DEVELOPMENT APPROVAL</b></p>		
<p><b>Approval no:</b> DEV2019/1041</p>		
<p><b>Date:</b> 18 July 2019</p>		

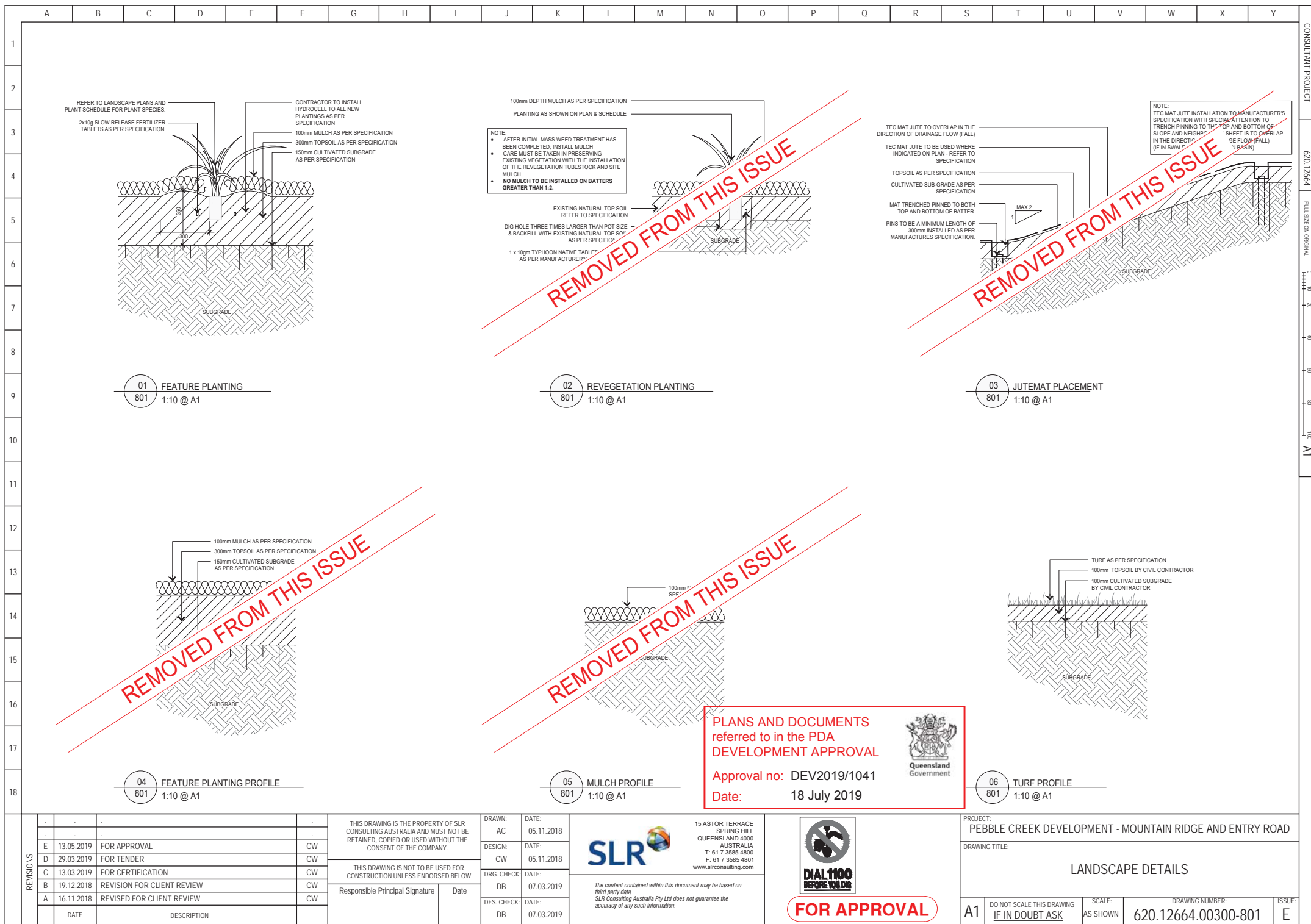
<p><b>PLANS AND DOCUMENTS</b> referred to in the PDA <b>DEVELOPMENT APPROVAL</b></p>		
<p><b>Approval no:</b> DEV2019/1041</p>		
<p><b>Date:</b> 18 July 2019</p>		

H:\Projects-SLR\620-BNE\620-BNE\620-12664-Pebble Creek Development-001-Pebble Creek\003-Mountain Ridge Rd and Entry Rd\07-SLR Data\01-Drawings\01-Current Drawings\SS\SSS-190513-For Approval\620-12664-00300-100-Coversheet.dwg

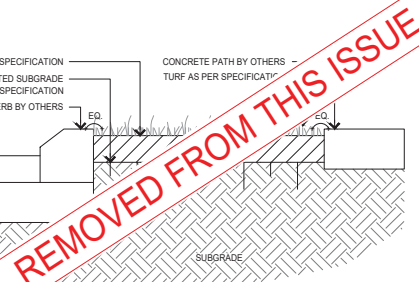




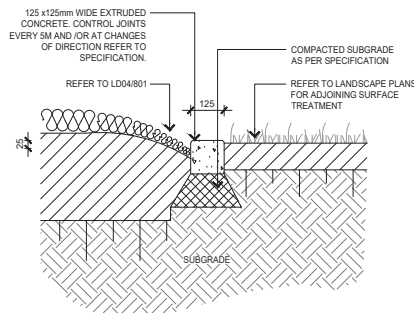




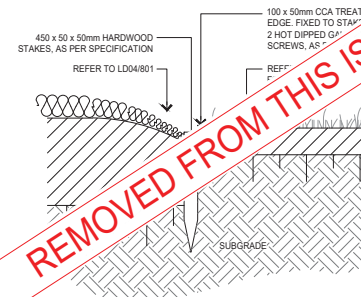
Date: 18 July 2019



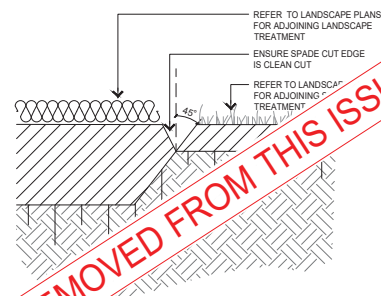
01 TURF TO BACK OF KERB  
802 1:10 @ A1



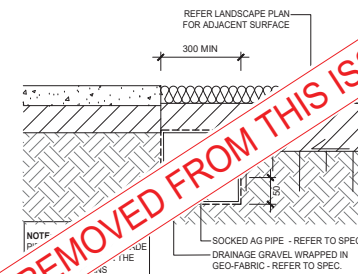
02 CONCRETE EDGE  
802 1:10 @ A1



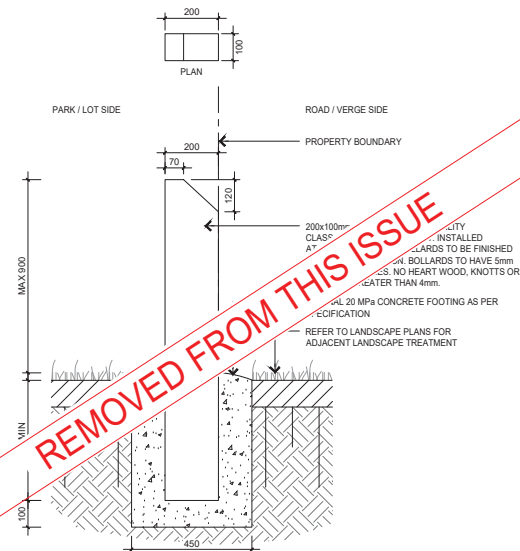
03 TIMBER EDGE  
802 1:10 @ A1



04 SPADE EDGE  
802 1:10 @ A1



05 SUBSURFACE DRAINAGE IN GARDEN BED  
802 1:10 @ A1



06 TYPICAL BOLLARD  
802 1:10 @ A1

REVISIONS	-	-	-	-
	-	-	-	-
	E	13.05.2019	FOR APPROVAL	CW
	D	29.03.2019	FOR TENDER	CW
	C	13.03.2019	FOR CERTIFICATION	CW
	B	19.12.2018	REVISION FOR CLIENT REVIEW	CW
	A	16.11.2018	REVISED FOR CLIENT REVIEW	CW
		DATE	DESCRIPTION	

THIS DRAWING IS THE PROPERTY OF SLR CONSULTING AUSTRALIA AND MUST NOT BE RETAINED, COPIED OR USED WITHOUT THE CONSENT OF THE COMPANY.

THIS DRAWING IS NOT TO BE USED FOR  
CONSTRUCTION UNLESS ENDORSED BELOW

Responsible Principal Signature	Date
---------------------------------	------

DRAWN:	DATE:
AC	05.11.2018
DESIGN:	DATE:
CW	05.11.2018
DRG. CHECK:	DATE:
DB	07.03.2019
DES. CHECK:	DATE:
DB	07.03.2019

**SLR** 

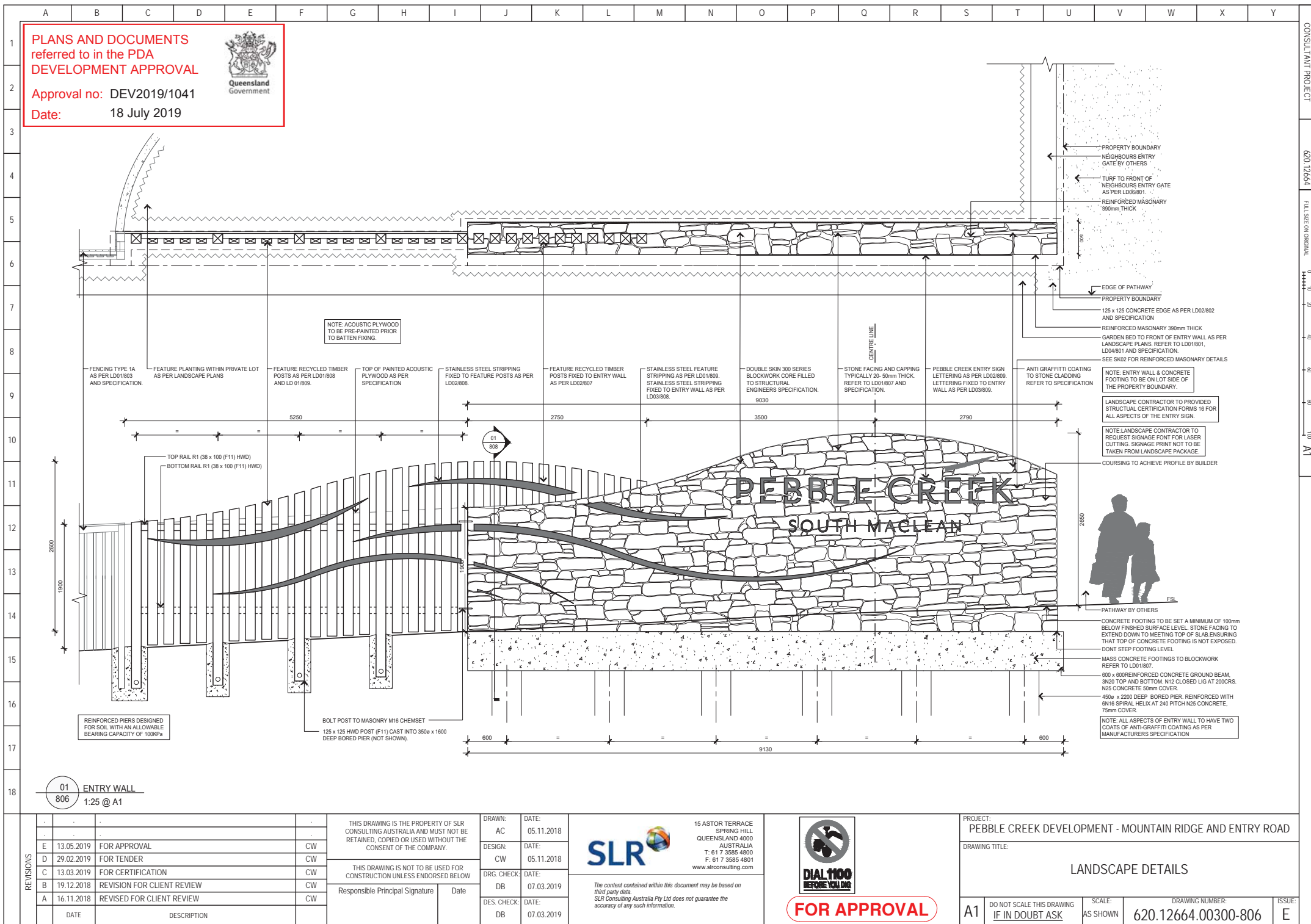
15 ASTOR TERRACE  
SPRING HILL  
QUEENSLAND 4000  
AUSTRALIA  
T: 61 7 3585 4800  
F: 61 7 3585 4801  
[www.slrconsulting.com](http://www.slrconsulting.com)

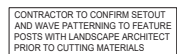
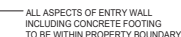
---

*The content contained within this document may be based on third party data.*  
SLR Consulting Australia Pty Ltd does not guarantee the accuracy of any such information.



PROJECT: PEBBLE CREEK DEVELOPMENT - MOUNTAIN RIDGE AND ENTRY ROAD				
DRAWING TITLE:  LANDSCAPE DETAILS				
A1	DO NOT SCALE THIS DRAWING IF IN DOUBT ASK	SCALE: AS SHOWN	DRAWING NUMBER: 620.12664.00300-802	ISSUED BY: E





REVISIONS

E	13.05.2019	FOR APPROVAL	CW
D	29.02.2019	FOR TENDER	CW
C	13.03.2019	FOR CERTIFICATION	CW
B	19.12.2018	REVISION FOR CLIENT REVIEW	CW
A	16.11.2018	REVISED FOR CLIENT REVIEW	CW
	DATE	DESCRIPTION	

THIS DRAWING IS THE PROPERTY OF SLR CONSULTING AUSTRALIA AND MUST NOT BE RETAINED, COPIED OR USED WITHOUT THE CONSENT OF THE COMPANY.

THIS DRAWING IS NOT TO BE USED FOR  
CONSTRUCTION UNLESS ENDORSED BELOW

Responsible Principal Signature	Date
---------------------------------	------

DRAWN: AC	DATE: 05.11.2018
DESIGN: CW	DATE: 16.11.2018
DRG. CHECK: DB	DATE: 07.03.2019
DES. CHECK: DB	DATE: 07.03.2019



15 ASTOR TERRACE  
SPRING HILL  
QUEENSLAND 4000  
AUSTRALIA  
T: 61 7 3585 4800  
F: 61 7 3585 4801  
[www.slrconsulting.com](http://www.slrconsulting.com)

*The content contained within this document may be based on third party data.  
SLR Consulting Australia Pty Ltd does not guarantee the accuracy of any such information.*



**FOR APPROVAL**

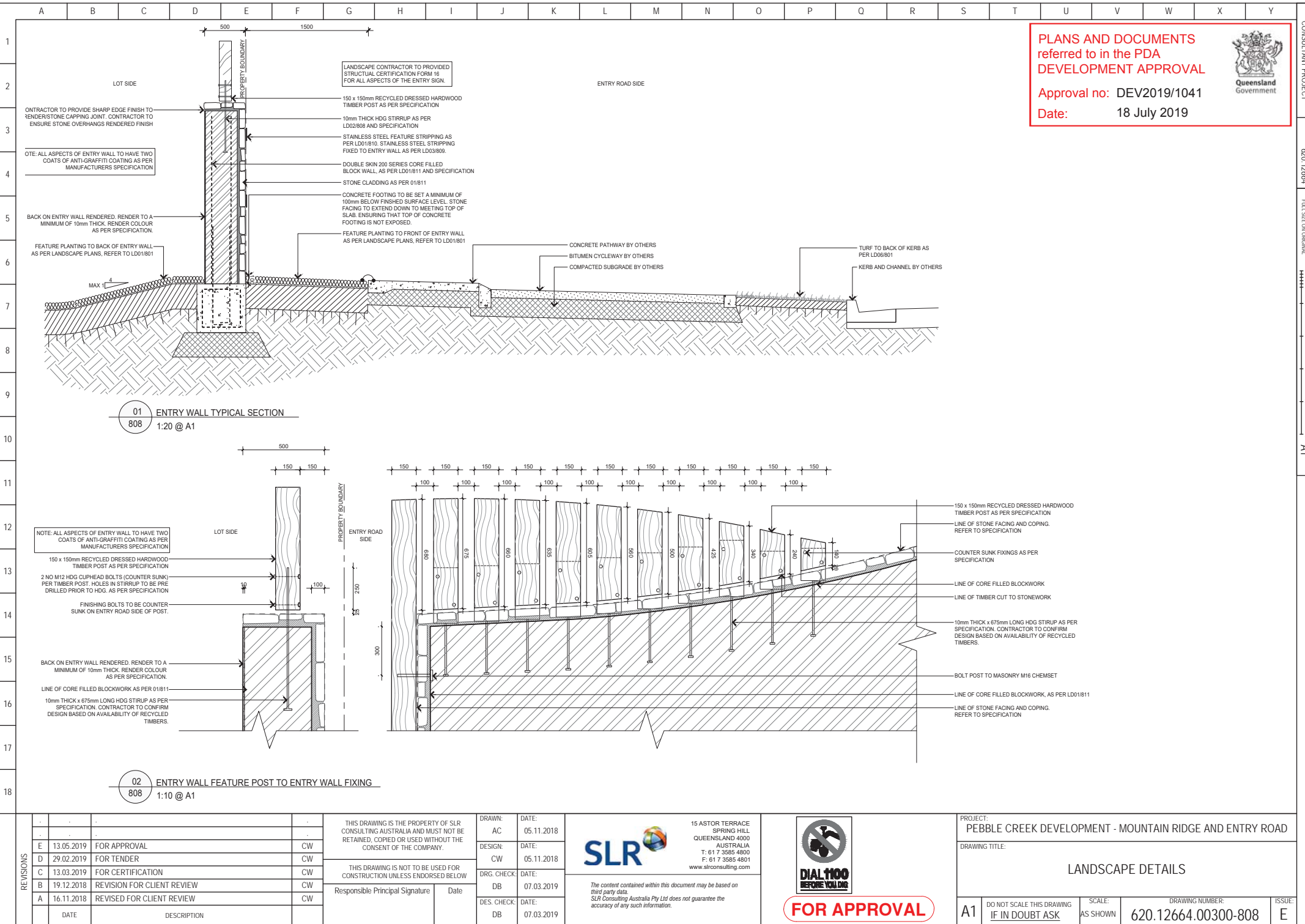
PROJECT: PEBBLE CREEK DEVELOPMENT - MOUNTAIN RIDGE AND ENTRY ROAD

DRAWING TITLE:

LANDSCAPE DETAILS

A1	DO NOT SCALE THIS DRAWING IF IN DOUBT ASK	SCALE: AS SHOWN	DRAWING NUMBER: 620.12664.00300-807	ISSUE: E
----	--	--------------------	--	-------------



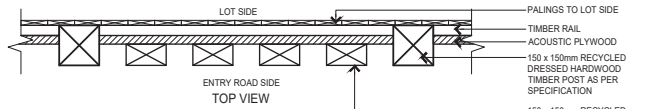


# PLANS AND DOCUMENTS referred to in the PDA DEVELOPMENT APPROVAL



Approval no: DEV2019/1041

Date: 18 July 2019



PALINGS TO LOT SIDE  
TIMBER RAIL  
ACOUSTIC PLYWOOD  
150 x 150mm RECYCLED DRESSED HARDWOOD  
TIMBER POST AS PER SPECIFICATION

150 x 150mm RECYCLED DRESSED HARDWOOD  
TIMBER POST CUT IN HALF TO CREATE 75mm THICK  
ARCHITECTURAL TIMBER POST. 75 x 150mm POST  
FIXED WITH HIDDEN FIXING TO RAIL BEHIND. ALL FIXING  
TO BE FLUSH FINISHED ALLOWING FOR INSTALLATION  
OF PALING TO LOT SIDE.

LINE OF ACOUSTIC PLYWOOD BEHIND

ADJOINS AS PER LD01/806

150 x 150mm RECYCLED DRESSED  
HARDWOOD TIMBER POST AS PER  
SPECIFICATION

LOT SIDE

ENTRY ROAD SIDE

PROPERTY BOUNDARY

HEIGHT VARIES

POST HEIGHT VARIES

ACOUSTIC PLYWOOD TO 1900mm HIGH FROM G.S.L.

G.S.L.

SIDE VIEW

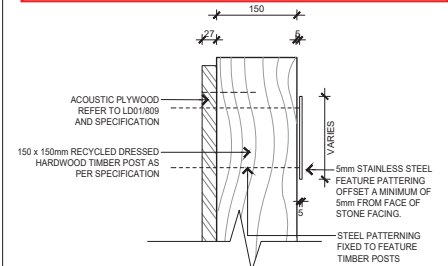
FRONT VIEW

## LASERCUT LETTERING NOTES:

- TO MINIMISE THE RISK OF FINGER ENTRAPMENT, ENSURE THAT ANY GAP THAT IS GREATER THAN 8mm IS ALSO GREATER THAN 23mm.
- LETTERING TO HAVE NO SHARP EDGES. ALL EDGE TO HAVE A MIN CORNER RADIUS 1.5mm.
- TEMPLATE TO BE REVIEWED AND APPROVED AS STRUCTURALLY SUITABLE BY FABRICATOR / ENGINEER. FINAL TEMPLATE TO BE APPROVED BY LANDSCAPE ARCHITECT PRIOR TO CONSTRUCTION.
- M16 PINS TO BE FULLY WELDED TO BACK OF LETTERING PLATE. PINS TO ALLOW FOR LETTERING TO SIT 5mm OFF FACE OF FEATURE POSTS.
- PROVIDE A ZINC RICH PRIMER TO THE BACK FACE AROUND THE FIXING HOLES.
- M16 PIN TO BE FIXED TO POST WITH THREADED ROD AND COUNTERSUNK WASHER AND NUT.
- NO FIXINGS ARE TO BE VISIBLE FROM ROAD SIDE OF WALL.
- NO DAMAGE TO HDG LETTERING OR PAINTWORK DURING CONSTRUCTION.

## FIXING NOTES:

- M16 PINS TO BE FULLY WELDED TO BACK OF LETTERING PLATE. PINS TO ALLOW FOR LETTERING TO SIT 5mm OFF FACE OF FEATURE POSTS.
- PROVIDE A ZINC RICH PRIMER TO THE BACK FACE AROUND THE FIXING HOLES.
- M16 PIN TO BE FIXED TO POST WITH THREADED ROD AND COUNTERSUNK WASHER AND NUT.
- NO FIXINGS ARE TO BE VISIBLE FROM ROAD SIDE OF WALL.
- NO DAMAGE TO HDG LETTERING OR PAINTWORK DURING CONSTRUCTION.



150 x 150mm RECYCLED DRESSED  
HARDWOOD TIMBER POST AS  
PER SPECIFICATION

ACOUSTIC PLYWOOD  
REFER TO LD01/806  
AND SPECIFICATION

5mm STAINLESS STEEL  
FEATURE PATTERNING  
OFFSET A MINIMUM OF  
5mm FROM FACE OF  
STONE FACING.

STEEL PATTERNING  
FIXED TO FEATURE  
TIMBER POSTS

02

809

ENTRY WALL STEEL PATTERNING TO FEATURE POST FIXING

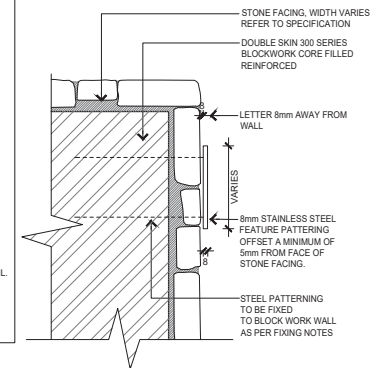
1:5 @ A1

## LASERCUT LETTERING NOTES:

- TO MINIMISE THE RISK OF FINGER ENTRAPMENT, ENSURE THAT ANY GAP THAT IS GREATER THAN 8mm.
- LETTERING TO HAVE NO SHARP EDGES. ALL EDGE TO HAVE A MIN CORNER RADIUS 1.5mm.
- TEMPLATE TO BE REVIEWED AND APPROVED AS STRUCTURALLY SUITABLE BY FABRICATOR / ENGINEER. FINAL TEMPLATE TO BE APPROVED BY LANDSCAPE ARCHITECT PRIOR TO CONSTRUCTION.

## FIXING NOTES:

- M16 PINS TO BE FULLY WELDED TO BACK OF LETTERING PLATE. PINS TO ALLOW FOR LETTERING TO SIT 5mm OFF FACE OF STONE CLADDING.
- PROVIDE A ZINC RICH PRIMER TO THE BACK FACE AROUND THE FIXING HOLES.
- M16 PIN TO BE CHAMFERED INTO BLOCK WALL.
- LANDSCAPE CONTRACTOR ENSURE THAT CHAMFER INJECTION IS EMBEDDED INTO CONCRETE TO STRUCTURAL ENGINEERS DETAIL.
- NO FIXINGS ARE TO BE VISIBLE FROM ROAD SIDE OF WALL.
- NO DAMAGE TO HDG LETTERING OR PAINTWORK DURING CONSTRUCTION.



STONE FACING, WIDTH VARIES  
REFER TO SPECIFICATION

DOUBLE SKIN 300 SERIES  
BLOCKWORK CORE FILLED  
REINFORCED

LETTER 8mm AWAY FROM  
WALL

VARIES

8mm STAINLESS STEEL  
FEATURE PATTERNING  
OFFSET A MINIMUM OF  
5mm FROM FACE OF  
STONE FACING.

STEEL PATTERNING  
TO BE FIRED  
TO BLOCK WORK WALL  
AS PER FIXING NOTES

03

809

ENTRY WALL STEEL PATTERNING TO ENTRY WALL FIXING

1:5 @ A1

01

809

ENTRY WALL FEATURE POST (IN-GROUND)

1:10 @ A1

REVISIONS

DATE	DESCRIPTION
E 13.05.2019	FOR APPROVAL
D 29.02.2019	FOR TENDER
C 13.03.2019	FOR CERTIFICATION
B 19.12.2018	REVISION FOR CLIENT REVIEW
A 16.11.2018	REVISED FOR CLIENT REVIEW

THIS DRAWING IS THE PROPERTY OF SLR CONSULTING AUSTRALIA AND MUST NOT BE RETAINED, COPIED OR USED WITHOUT THE CONSENT OF THE COMPANY.

THIS DRAWING IS NOT TO BE USED FOR CONSTRUCTION UNLESS ENDORSED BELOW

Responsible Principal Signature

Date

DRAWN:	AC	DATE:	05.11.2018
DESIGN:	CW	DATE:	05.11.2018
DRG. CHECK:	DB	DATE:	07.03.2019
DES. CHECK:	DB	DATE:	07.03.2019

**SLR**

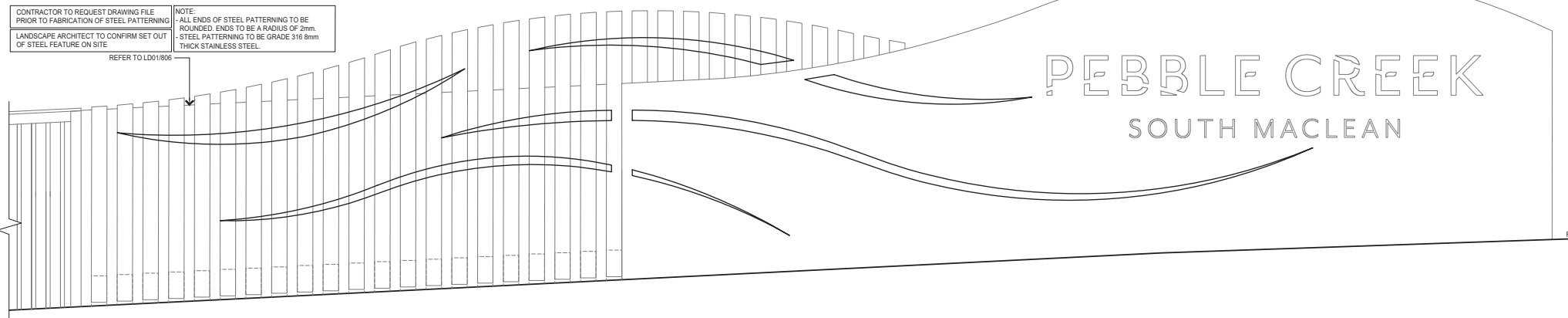
15 ASTOR TERRACE  
SPRING HILL  
QUEENSLAND 4000  
AUSTRALIA  
T: 61 7 3585 4800  
F: 61 7 3585 4801  
www.slrcconsulting.com

The content contained within this document may be based on third party data. SLR Consulting Australia Pty Ltd does not guarantee the accuracy of any such information.



**FOR APPROVAL**

PROJECT:	PEBBLE CREEK DEVELOPMENT - MOUNTAIN RIDGE AND ENTRY ROAD
DRAWING TITLE:	LANDSCAPE DETAILS
A1	DO NOT SCALE THIS DRAWING IF IN DOUBT ASK
SCALE:	AS SHOWN
DRAWING NUMBER:	620.12664.00300-809
ISSUE:	E



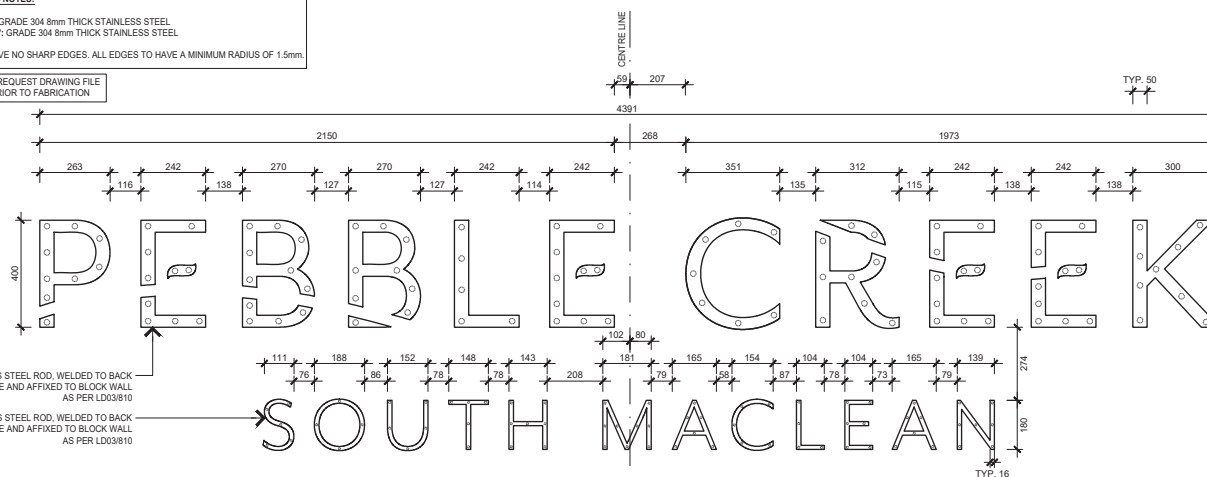
01	STEEL PATTERNING TO ENTRY WALL
810	1:20 @ A1

**LETTER FINISHING NOTES:**

"PEBBLE CREEK": GRADE 304 8mm THICK STAINLESS STEEL  
"SOUTH MACLEAN": GRADE 304 8mm THICK STAINLESS STEEL

LETTERING TO HAVE NO SHARP EDGES. ALL EDGES TO HAVE A MINIMUM RADIUS OF 1.5mm.

CONTRACTOR TO REQUEST DRAWING FILE  
FOR LETTERING PRIOR TO FABRICATION



M20 304 STAINLESS STEEL ROD, WELDED TO BACK  
OF LETTERING PLATE AND AFFIXED TO BLOCK WALL  
AS PER I D03/810

M8 304 STAINLESS STEEL ROD, WELDED TO BACK  
OF LETTERING PLATE AND AFFIXED TO BLOCK WALL  
AS PER ID03/810

02	ENTRY WALL LETTERING
10	1:10 @ A1

NOTE: REFER TO LD01/806 FOR LETTERING LOCATION.

NOTE: LANDSCAPE CONTRACTOR TO REQUEST SIGNAGE FONT FOR LASER CUTTING. SIGNAGE PRINT NOT TO BE TAKEN FROM LANDSCAPE PACKAGE

LANDSCAPE CONTRACTOR TO PROVIDED  
STRUCTURAL CERTIFICATION FORM 16 FOR  
ALL ASPECTS OF THE ENTRY SIGN.

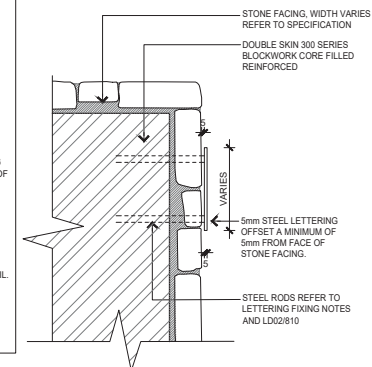
LASERCUT LETTERING NOTES:

1. TO MINIMISE THE RISK OF FINGER ENTRAPMENT, ENSURE THAT ANY GAP THAT IS GREATER THAN 8mm IS ALSO GREATER THAN 25mm .
2. LETTERING TO HAVE NO SHARP EDGES. ALL EDGE TO HAVE A MIN CORNER RADIUS 1.5mm.
3. TEMPLATE TO BE REVIEWED AND APPROVED AS STRUCTURALLY SUITABLE BY FABRICATOR / ENGINEER. FINAL TEMPLATE TO BE APPROVED BY LANDSCAPE ARCHITECT PRIOR TO CONSTRUCTION.

LASERCUT LETTERING TO BE AS PER LD02/810

LETTERING FIXING NOTES:

4. M20 AND M8 RODS TO BE FULLY WELDED TO BACK OF LETTERING PLATE. RODS TO ALLOW FOR LETTERING TO SIT 5mm OFF FACE OF STONE CLADDING.
5. PROVIDE A ZINC RICH PRIMER TO THE BACK FACE AROUND THE FIXING HOLES.
6. RODS TO BE CHISEL INTO BLOCK WALL.
7. LANDSCAPE CONTRACTOR ENSURE THAT CHEMIST INJECTION IS EMBEDDED INTO CONCRETE TO STRUCTURAL ENGINEERS DETAIL.
8. NO FIXINGS ARE TO BE VISIBLE FROM ROAD SIDE OF WALL.
9. NO DAMAGE TO HDG LETTERING OR PAINTWORK DURING CONSTRUCTION.



03 ENTRY WALL LETTERING FIXING  
810 1:5 @ A1

REVISIONS	-	-	-	-
	-	-	-	-
	E	13.05.2019	FOR APPROVAL	CW
	D	29.03.2019	FOR TENDER	CW
	C	13.03.2019	FOR CERTIFICATION	CW
	B	19.12.2018	REVISION FOR CLIENT REVIEW	CW
	A	16.11.2018	REVISED FOR CLIENT REVIEW	CW
		DATE	DESCRIPTION	

THIS DRAWING IS THE PROPERTY OF SLR CONSULTING AUSTRALIA AND MUST NOT BE RETAINED, COPIED OR USED WITHOUT THE CONSENT OF THE COMPANY.

THIS DRAWING IS NOT TO BE USED FOR CONSTRUCTION UNLESS ENDORSED BELOW	
Responsible Principal Signature	Date

DRAWN:	DATE:
AC	05.11.2018
DESIGN:	DATE:
CW	05.11.2018
DRG. CHECK:	DATE:
DB	07.03.2019
DES. CHECK:	DATE:
DB	07.03.2019



The content contained within this document may be based on third party data.  
SLR Consulting Australia Pty Ltd does not guarantee the accuracy of any such information.

15 ASTOR TERRACE  
SPRING HILL  
QUEENSLAND 4000  
AUSTRALIA  
T: 61 7 3585 4800  
F: 61 7 3585 4801  
[www.slrconsulting.com](http://www.slrconsulting.com)



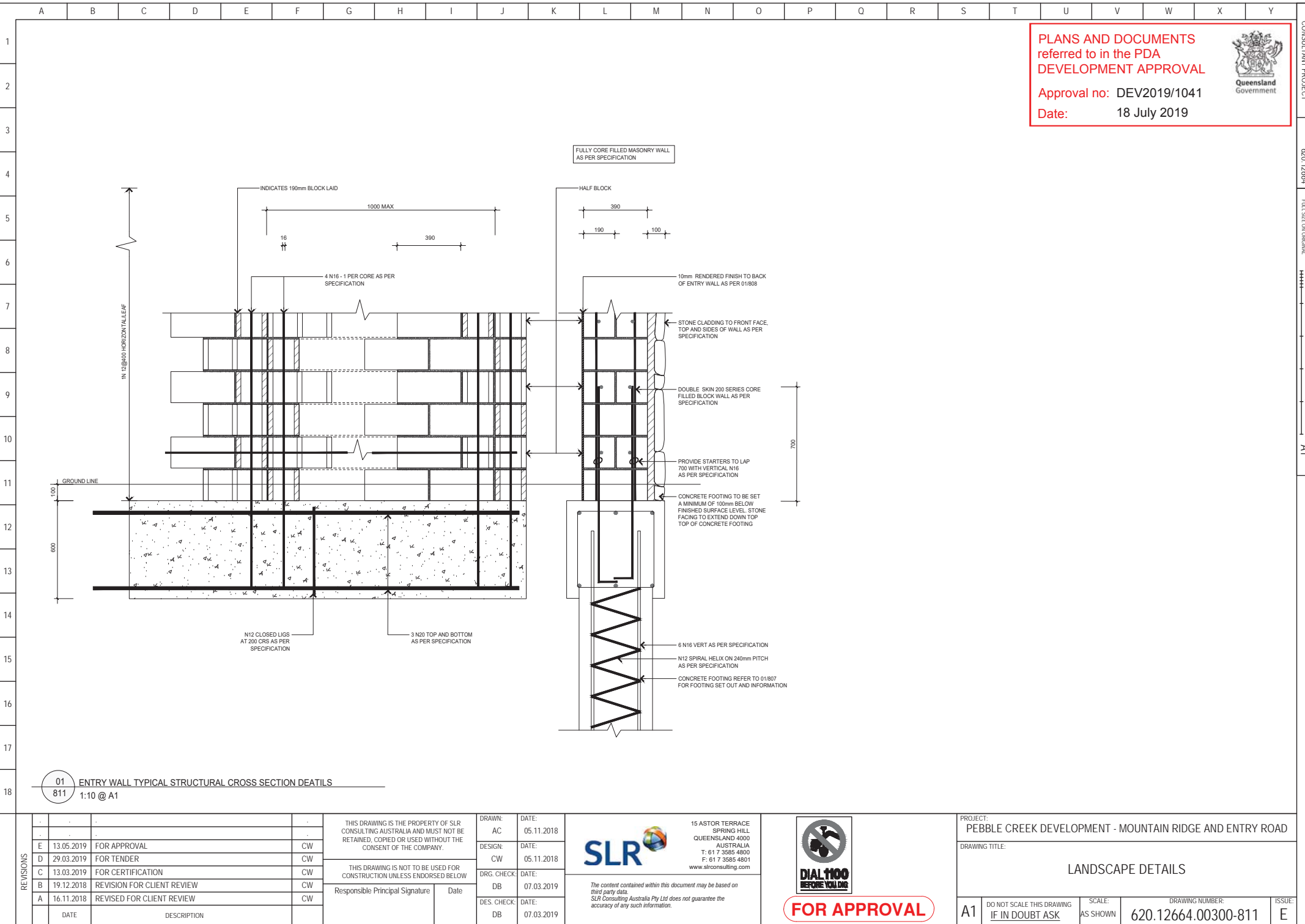
**FOR APPROVAL**

PROJECT: PEBBLE CREEK DEVELOPMENT - MOUNTAIN RIDGE AND ENTRY ROAD

DRAWING TITLE:

LANDSCAPE DETAILS

A1	DO NOT SCALE THIS DRAWING IF IN DOUBT ASK	SCALE: AS SHOWN	DRAWING NUMBER: 620.12664.00300-810	ISSUED BY: E
----	--	--------------------	--	-----------------



PLANS AND DOCUMENTS  
referred to in the PDA  
DEVELOPMENT APPROVAL



Approval no: DEV2019/1041  
Date: 18 July 2019

CONSULTANT PROJECT

620 12664

FULL SIZE ON ORIGINAL

0 10 20 40 60 80 100  
A1

01 ENTRY WALL TYPICAL STRUCTURAL CROSS SECTION DETAILS  
811 1:10 @ A1

REVISIONS	DATE	DESCRIPTION	
	-	-	-
	-	-	-
	E 13.05.2019	FOR APPROVAL	CW
	D 29.03.2019	FOR TENDER	CW
	C 13.03.2019	FOR CERTIFICATION	CW
	B 19.12.2018	REVISION FOR CLIENT REVIEW	CW
A	DATE	DESCRIPTION	
	16.11.2018	REVISED FOR CLIENT REVIEW	CW

THIS DRAWING IS THE PROPERTY OF SLR CONSULTING AUSTRALIA AND MUST NOT BE RETAINED, COPIED OR USED WITHOUT THE CONSENT OF THE COMPANY.

THIS DRAWING IS NOT TO BE USED FOR CONSTRUCTION UNLESS ENDORSED BELOW

Responsible Principal Signature \_\_\_\_\_ Date \_\_\_\_\_

DRAWN:	AC	DATE:	05.11.2018
DESIGN:	CW	DATE:	05.11.2018
DRG. CHECK:	DB	DATE:	07.03.2019
DES. CHECK:	DB	DATE:	07.03.2019



15 ASTOR TERRACE  
SPRING HILL  
QUEENSLAND 4000  
AUSTRALIA  
T: 61 7 3585 4800  
F: 61 7 3585 4801  
www.slrconsulting.com

The content contained within this document may be based on third party data.  
SLR Consulting Australia Pty Ltd does not guarantee the accuracy of any such information.



**FOR APPROVAL**

PROJECT: PEBBLE CREEK DEVELOPMENT - MOUNTAIN RIDGE AND ENTRY ROAD			
DRAWING TITLE: LANDSCAPE DETAILS			
A1	DO NOT SCALE THIS DRAWING IF IN DOUBT ASK	SCALE: AS SHOWN	DRAWING NUMBER: 620.12664.00300-811
			ISSUE: E



## LEGEND

- 1 SANDSTONE FACED WALL
- 2 PEBBLE CREEK ENTRY NAME LOGO
- 3 STAINLESS STEEL ACCENT ELEMENTS
- 4 RECYCLED TIMBER POSTS
- 5 1900mm HIGH DOUBLE PAILING ACOUSTIC FENCE
- 6 ENTRY ROAD PLANTING
- 7 LANDMARK VEGETATION  
(on adjoining property)

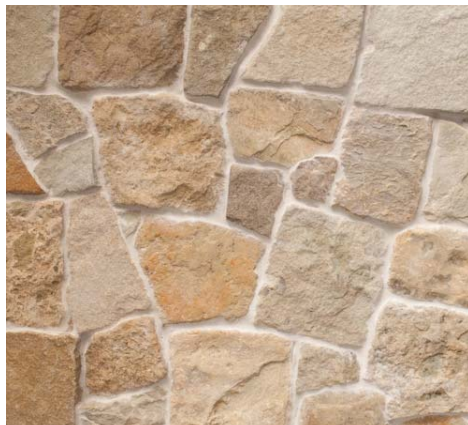




## ENTRY FENCE AND ENTRY WALL PROPOSED MATERIALS AND FINISHES LIST

### SANDSTONE FACING OPTIONS

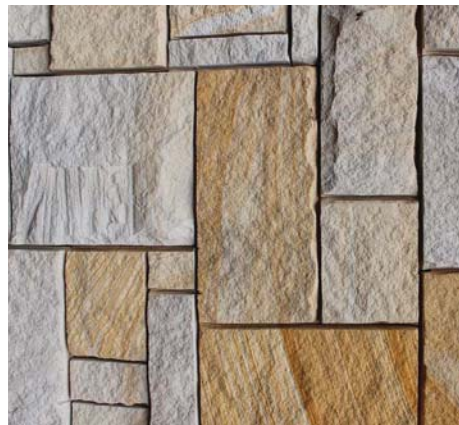
1 SANDSTONE RANDOM ASHLAR



1 SANDSTONE RANDOM ASHLAR



2 SANDSTONE ASHLAR PAVING



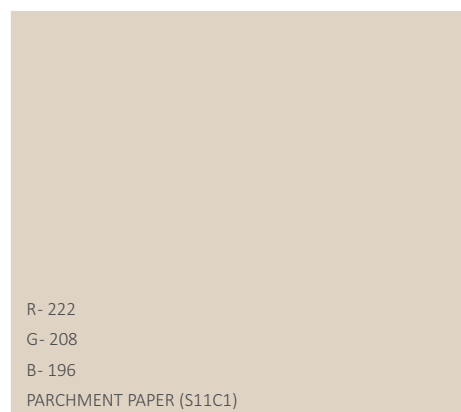
2 SANDSTONE ASHLAR PAVING



4 RECYCLED TIMBER POSTS (150 x 150)



5 FEATURE PANEL BACKGROUND COLOUR



3 HOOP PINE (*araucaria cunninghamii*)



3 MORTON BAY ASH (*corymbia tessellaris*)

