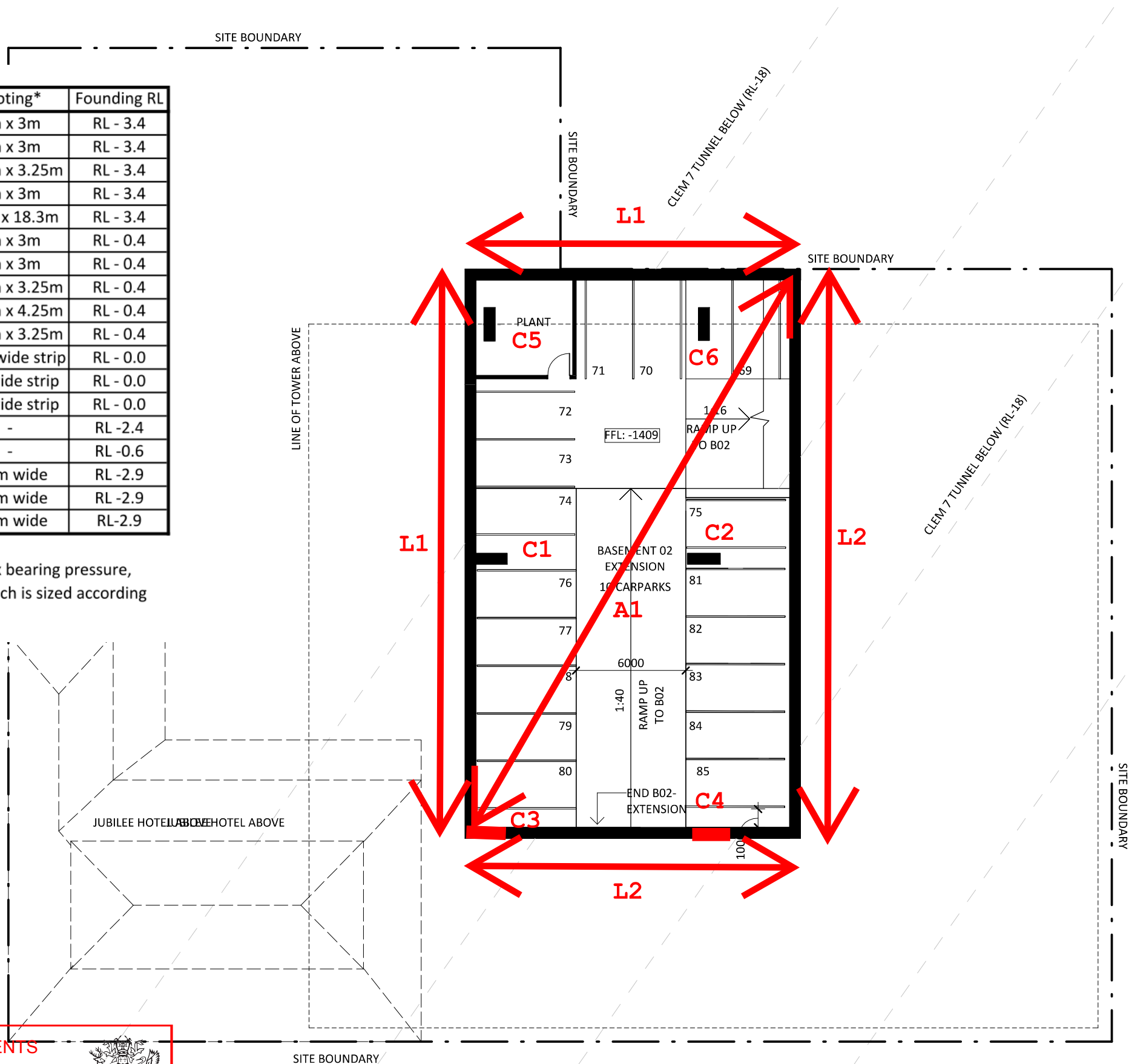


	Working Load	Footing*	Founding RL
C1	17800 kN	3m x 3m	RL - 3.4
C2	18500 kN	3m x 3m	RL - 3.4
C3	21000 kN	3.25m x 3.25m	RL - 3.4
C4	18550 kN	3m x 3m	RL - 3.4
C5 + C6	54700 kN	3.5m x 18.3m	RL - 3.4
C7	17200 kN	3m x 3m	RL - 0.4
C10	17900 kN	3m x 3m	RL - 0.4
C11	20400 kN	3.25m x 3.25m	RL - 0.4
C12	36000 kN	4.25m x 4.25m	RL - 0.4
C13	17000 kN	3.25m x 3.25m	RL - 0.4
Core 1	18000 kN	0.8m wide strip	RL - 0.0
Core 2	22000 kN	1m wide strip	RL - 0.0
Core 3	23000 kN	1m wide strip	RL - 0.0
A1	7.5 kPa	-	RL -2.4
A2	7.5 kPa	-	RL -0.6
L1	240 kN/m	0.6m wide	RL -2.9
L2	85 kN/m	0.6m wide	RL -2.9
L3	210 kN/m	0.6m wide	RL -2.9


* Based typically on a 2 MPa max bearing pressure, except for the C5/C6 Footing which is sized according to Golders advice



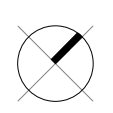
PLANS AND DOCUMENTS referred to in the PDA DEVELOPMENT APPROVAL

Approval no: DEV2017/891

Date: 19 February 2018



FOOTING LOADS
RBG DK 18/01/18
17260S 1/2



SCALE@A3
1 : 250

Proj. No
16008

Drawing No
03.00.1

Rev Issue Date

Jubilee Hotel Redevelopment
470 St Pauls Terrace, Fortitude Valley QLD 4006

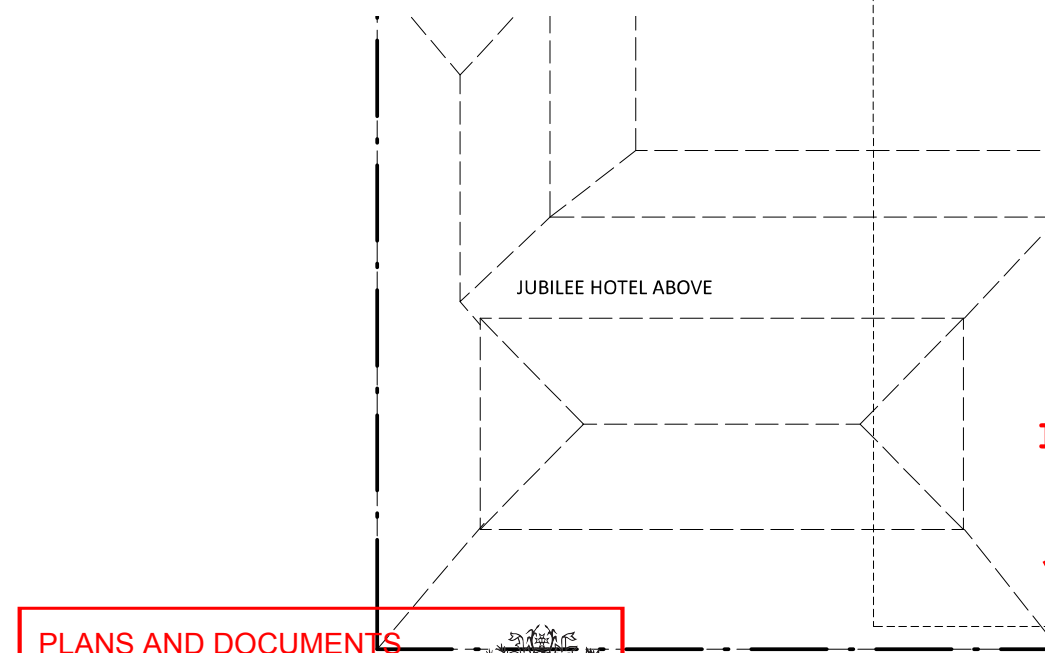
Sheet Name
OVERALL FLOOR PLAN BASEMENT 2 - EXTENSION



BlightRayner
07 3905 6500
info@blightrayner.com.au
blightrayner.com.au

	Working Load	Footing*	Founding RL
C1	17800 kN	3m x 3m	RL - 3.4
C2	18500 kN	3m x 3m	RL - 3.4
C3	21000 kN	3.25m x 3.25m	RL - 3.4
C4	18550 kN	3m x 3m	RL - 3.4
C5 + C6	54700 kN	3.5m x 18.3m	RL - 3.4
C7	17200 kN	3m x 3m	RL - 0.4
C10	17900 kN	3m x 3m	RL - 0.4
C11	20400 kN	3.25m x 3.25m	RL - 0.4
C12	36000 kN	4.25m x 4.25m	RL - 0.4
C13	17000 kN	3.25m x 3.25m	RL - 0.4
Core 1	18000 kN	0.8m wide strip	RL - 0.0
Core 2	22000 kN	1m wide strip	RL - 0.0
Core 3	23000 kN	1m wide strip	RL - 0.0
A1	7.5 kPa	-	RL -2.4
A2	7.5 kPa	-	RL -0.6
L1	240 kN/m	0.6m wide	RL -2.9
L2	85 kN/m	0.6m wide	RL -2.9
L3	210 kN/m	0.6m wide	RL -2.9

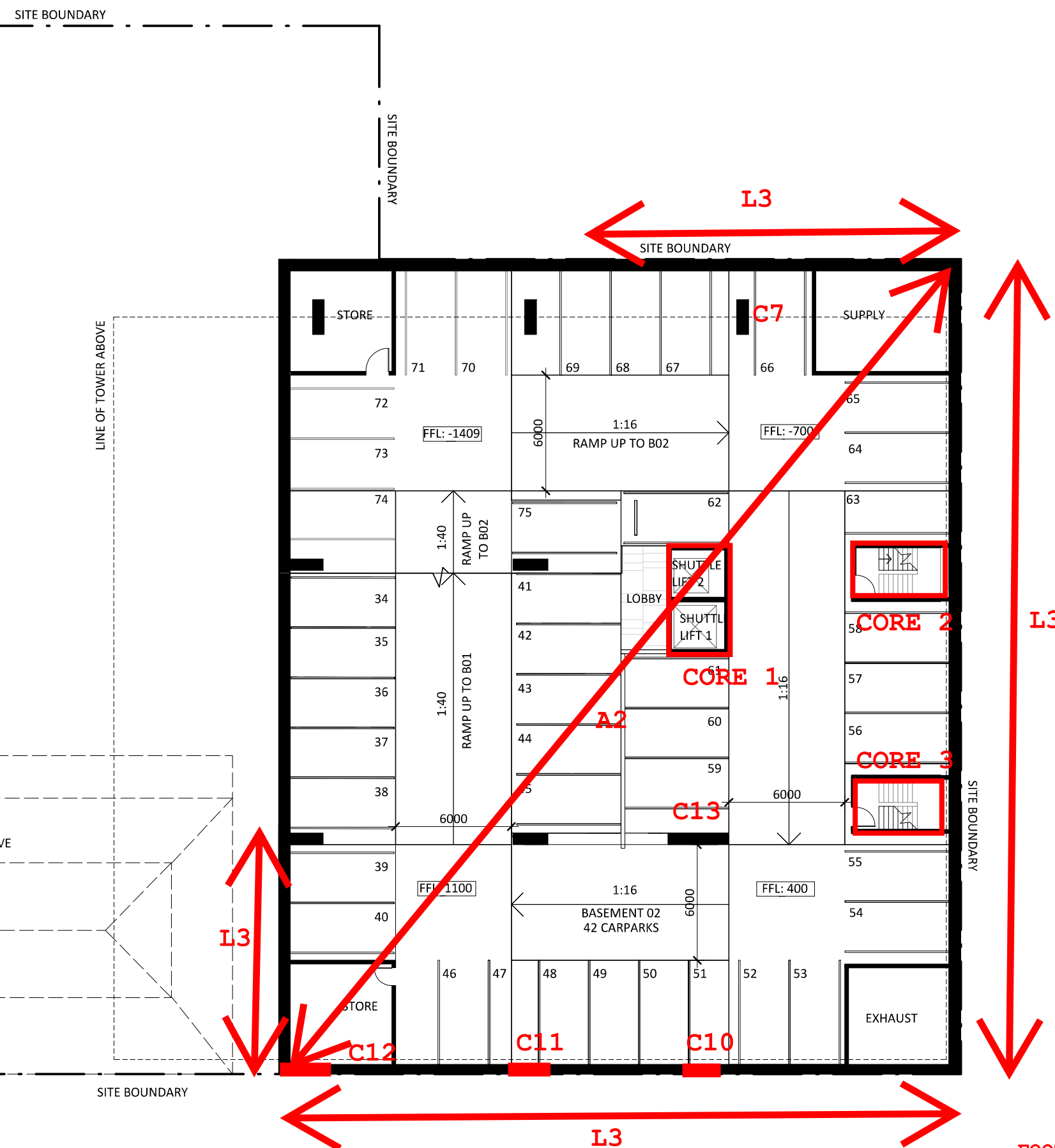
* Based typically on a 2 MPa max bearing pressure, except for the C5/C6 Footing which is sized according to Golders advice



PLANS AND DOCUMENTS referred to in the PDA DEVELOPMENT APPROVAL

Approval no: DEV2017/891

Date: 19 February 2018



FOOTING LOADS
RBG DK 18/01/18
17260S 2/2

SCALE@A3
1 : 250

Proj. No
16008

Drawing No
03.01

Rev Issue Date

Jubilee Hotel Redevelopment
470 St Pauls Terrace, Fortitude Valley QLD 4006

Sheet Name
OVERALL FLOOR PLAN BASEMENT 02



BlightRayner
07 3905 6500
info@blightrayner.com.au
blightrayner.com.au