



PLANS AND DOCUMENTS
referred to in the PDA
DEVELOPMENT APPROVAL
Approval no: DEV2014/635
Date: 23 December 2016



WREN STREET CAR PARK
PROPOSED CAR PARK

© Copyright Thomson Adsett Pty Ltd.
ABN 76 105 314 664.
Trading as ThomsonAdsett.
Telephone +61 7 3840 9999
bne@thomsonadsett.com
128 Robertson Street
Fortitude Valley
Qld 4006 Australia
thomsonadsett.com

**thomson
adsett**

PERSPECTIVES - WREN STREET VIEW
@ A1
AC 0200
05-10-2016
rev. C



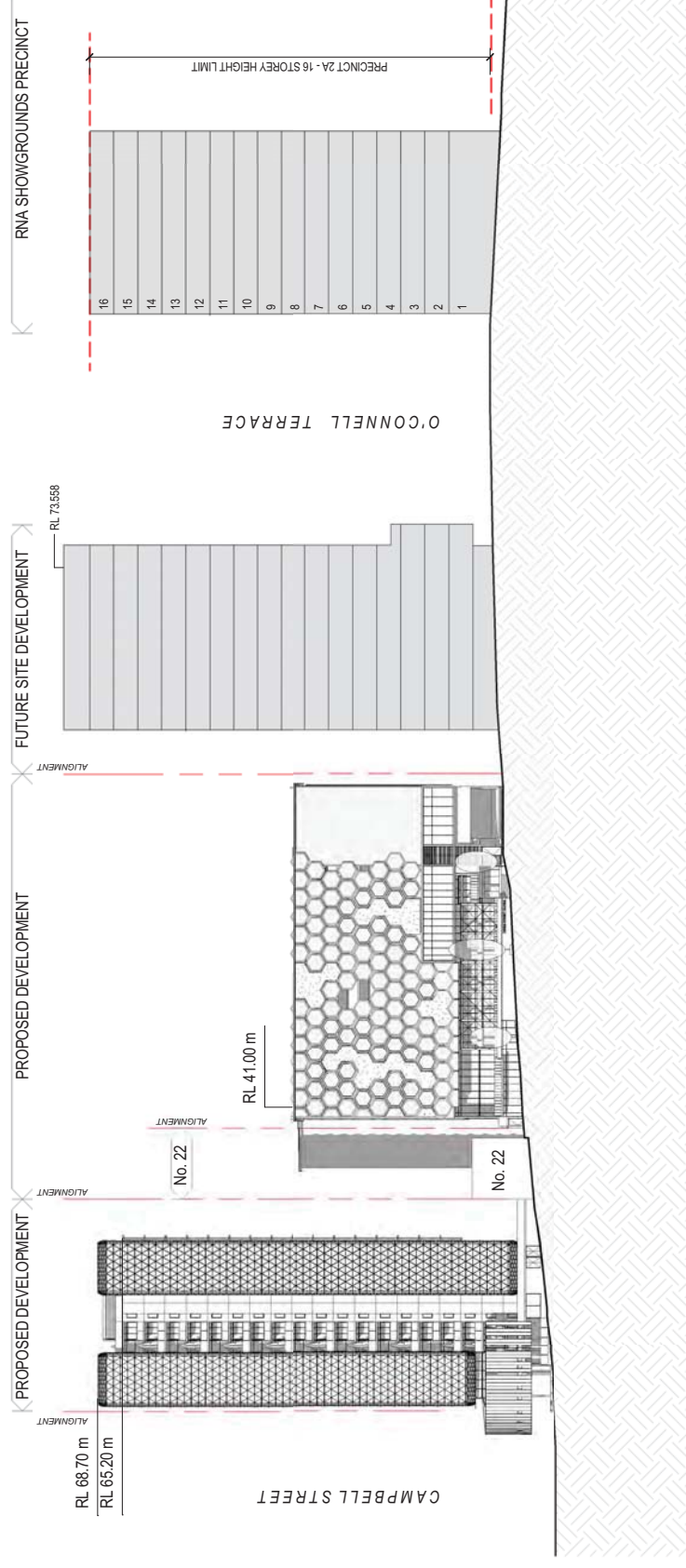
ICB VIEW



PLANS AND DOCUMENTS
referred to in the PDA
DEVELOPMENT APPROVAL

Approval no: DEV2014/635

Date: 23 December 2016




PLANS AND DOCUMENTS
 referred to in the PDA
DEVELOPMENT APPROVAL
 Approval no: DEV2014/635
 Date: 23 December 2016

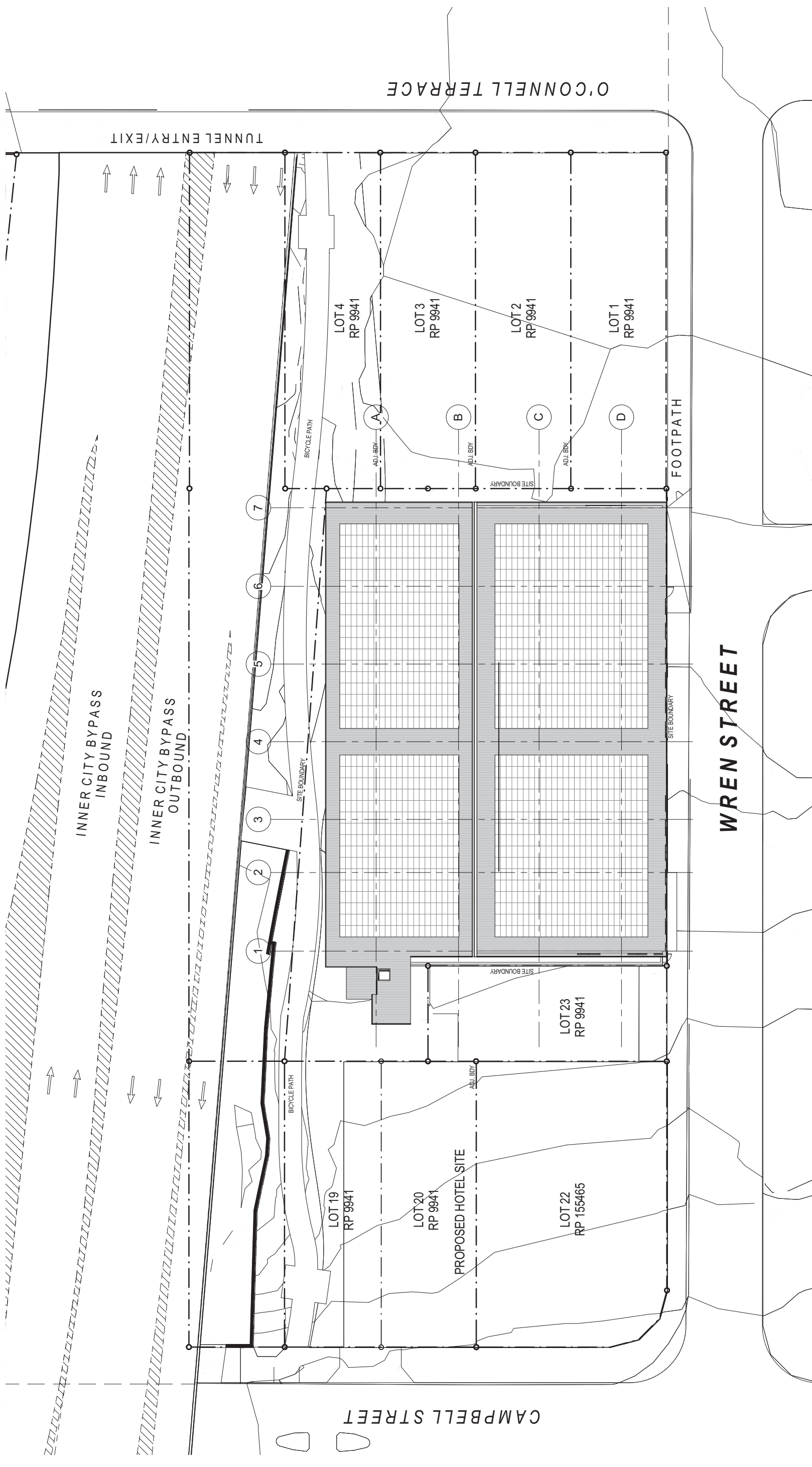
WREN STREET CAR PARK
PROPOSED CAR PARK

Telephone +61 7 3840 9999
 bne@thomsonadsett.com
 128 Robertson Street
 Fortitude Valley
 Qld 4006 Australia
 thomsonadsett.com

© Copyright Thomson Adsett Pty Ltd.
 ABN 76 105 314 634
 Trading as ThomsonAdsett.

**thomson
adsett**

WREN STREET ELEVATION
 1 : 500 @ A1
 AC 1001
 rev. C
 21-07-2016



PLANNING INFORMATION	
RPD	PROPOSED LOTS 24 TO 34 ON RP9941
SITE INFORMATION	
SITE AREA	2050m ²
SITE COVER	1807m ² = 88%
GFA (RETAIL)	3711m ²
CAR PARK NO.	313



PLANS AND DOCUMENTS referred to in the PDA DEVELOPMENT APPROVAL

Approval no: DEV2014/635
 Date: 23 December 2016



WREN STREET CAR PARK
 PROPOSED CAR PARK

© Copyright Thomson Adsett Pty Ltd.
 ABN 76 105 314 634
 Trading as ThomsonAdsett.

Telephone +61 7 3840 9999
 bne@thomsonadsett.com
 128 Robertson Street
 Fortitude Valley
 Qld 4006 Australia
 thomsonadsett.com

thomson adsett

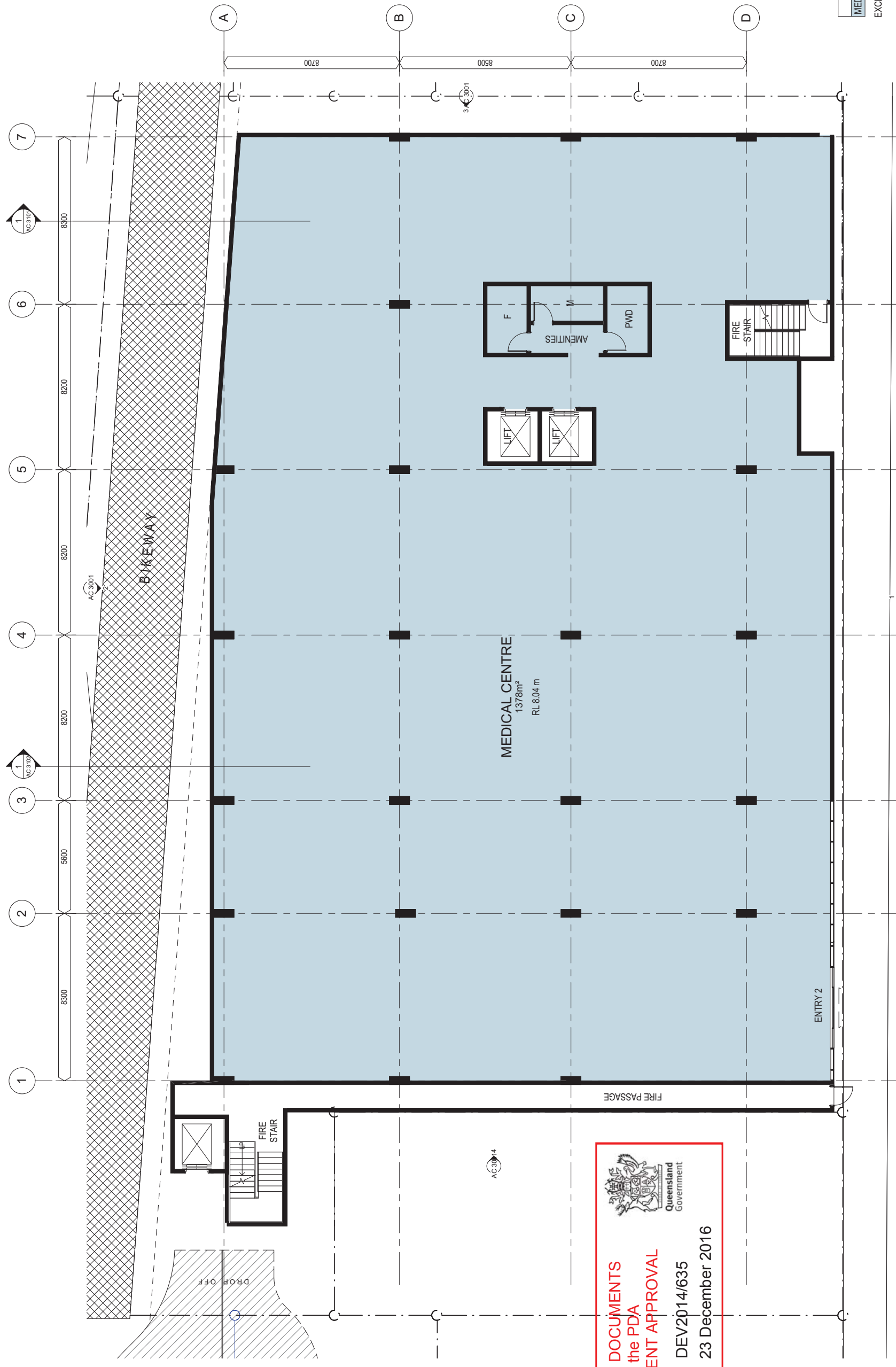
SITE PLAN

1:200 @ A1

29-08-2016

AC 1002

rev. F



TENANCY	AREA
MEDICAL CENTRE	1378 m ²

EXCL. LIFTS, SERVICES & STAIRS


PLANS AND DOCUMENTS
 referred to in the PDA
DEVELOPMENT APPROVAL
 Approval no: DEV2014/635
 Date: 23 December 2016



Telephone +61 7 3840 9999
 bne@thomsonadsett.com
 128 Robertson Street
 Fortitude Valley
 Qld 4006 Australia
 thomsonadsett.com

© Copyright Thomson Adsett Pty Ltd.
 ABN 76 105 514 654
 Trading as ThomsonAdsett.

WREN STREET CAR PARK
 PROPOSED CAR PARK

WREN STREET

PROPOSED LOWER GROUND FLOOR

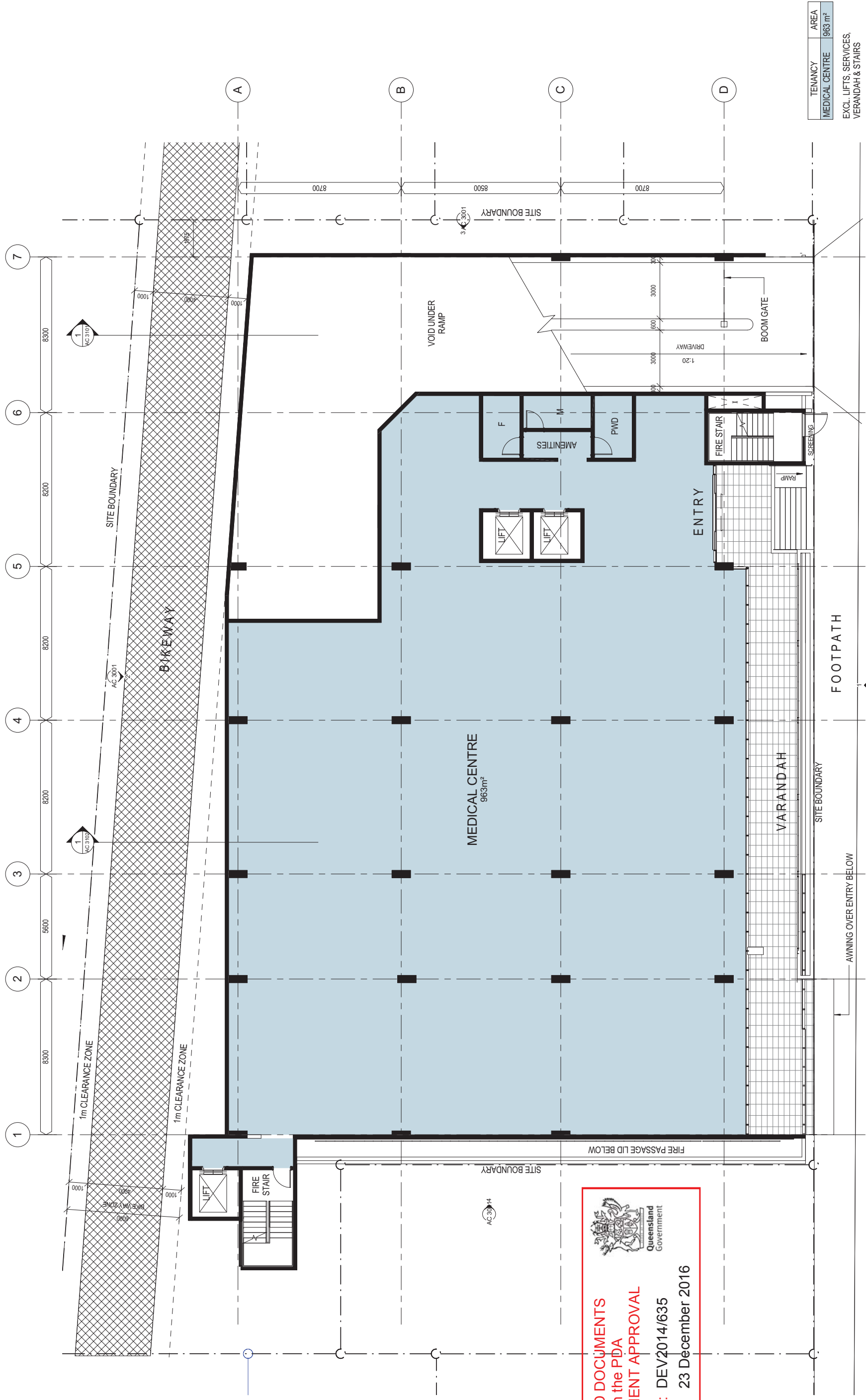
1 : 100 @ A1

29-08-2016

AC 2000

rev. D

thomson
adsett



TENANCY	AREA
MEDICAL CENTRE	963 m ²

EXCL. LIFTS, SERVICES, VERANDAH & STAIRS

PLANS AND DOCUMENTS
 referred to in the PDA
DEVELOPMENT APPROVAL
 Approval no: DEV2014/635
 Date: 23 December 2016



WREN STREET CAR PARK
 PROPOSED CAR PARK

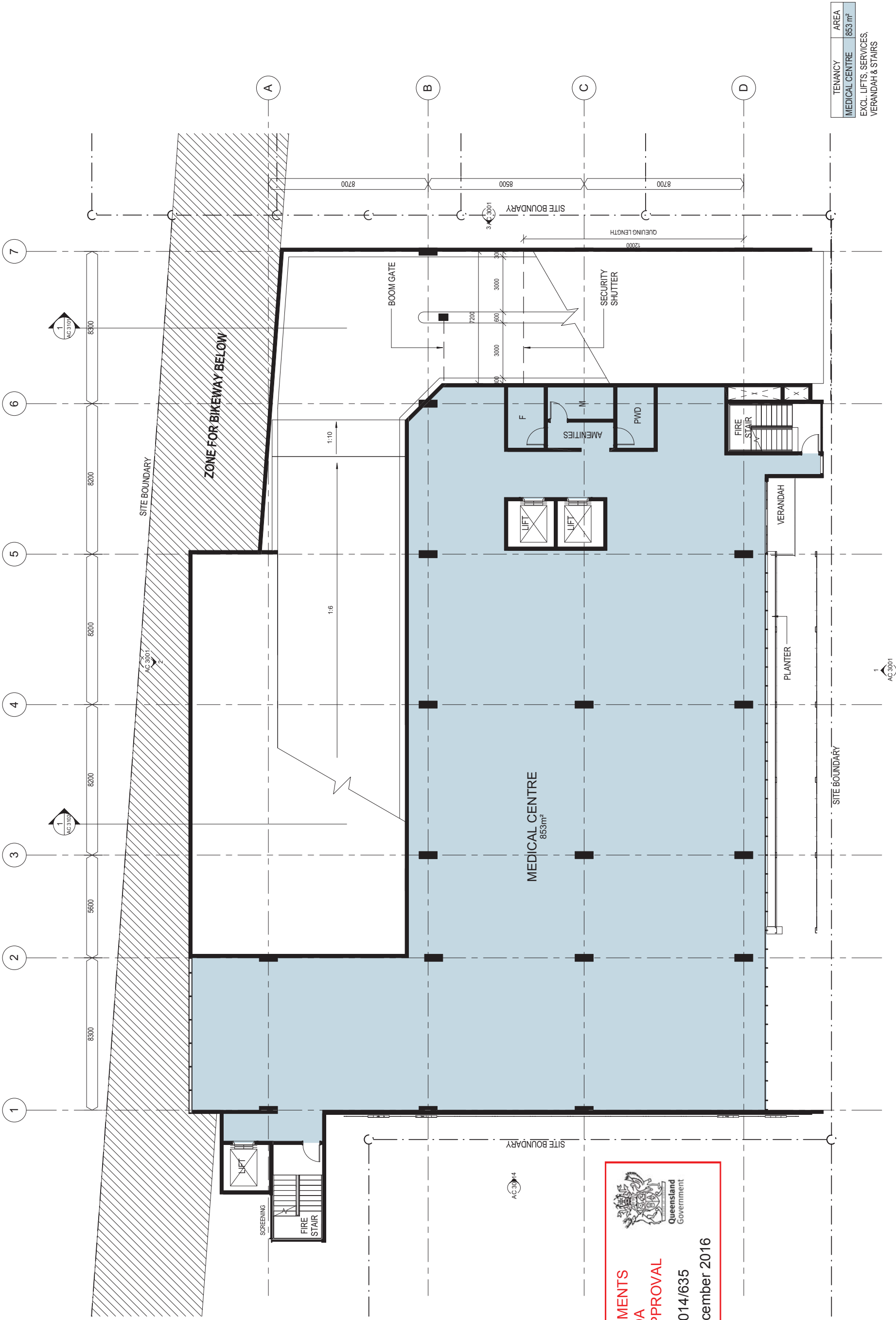
© Copyright Thomson Adsett Pty Ltd.
 ABN 76 105 314 654
 Trading as ThomsonAdsett.

Telephone +61 7 3840 9999
 bne@thomsonadsett.com
 128 Robertson Street
 Fortitude Valley
 Qld 4006 Australia
 thomsonadsett.com

**thomson
adsett**

PROPOSED GROUND FLOOR PLAN
 1 : 100 @ A1
 AC 2001
 rev. E
 29-08-2016

WREN STREET



TENANCY	AREA
MEDICAL CENTRE	853 m ²
EXCL. LIFTS, SERVICES, VERANDAH & STAIRS	


PLANS AND DOCUMENTS
 referred to in the PDA
DEVELOPMENT APPROVAL
 Approval no: DEV2014/635
 Date: 23 December 2016



WREN STREET CAR PARK
 PROPOSED CAR PARK

© Copyright Thomson Adsett Pty Ltd.
 ABN 76 105 314 654
 Trading as ThomsonAdsett.

Telephone +61 7 3840 9999
 bne@thomsonadsett.com
 128 Robertson Street
 Fortitude Valley
 Qld 4006 Australia
 thomsonadsett.com

**thomson
adsett**

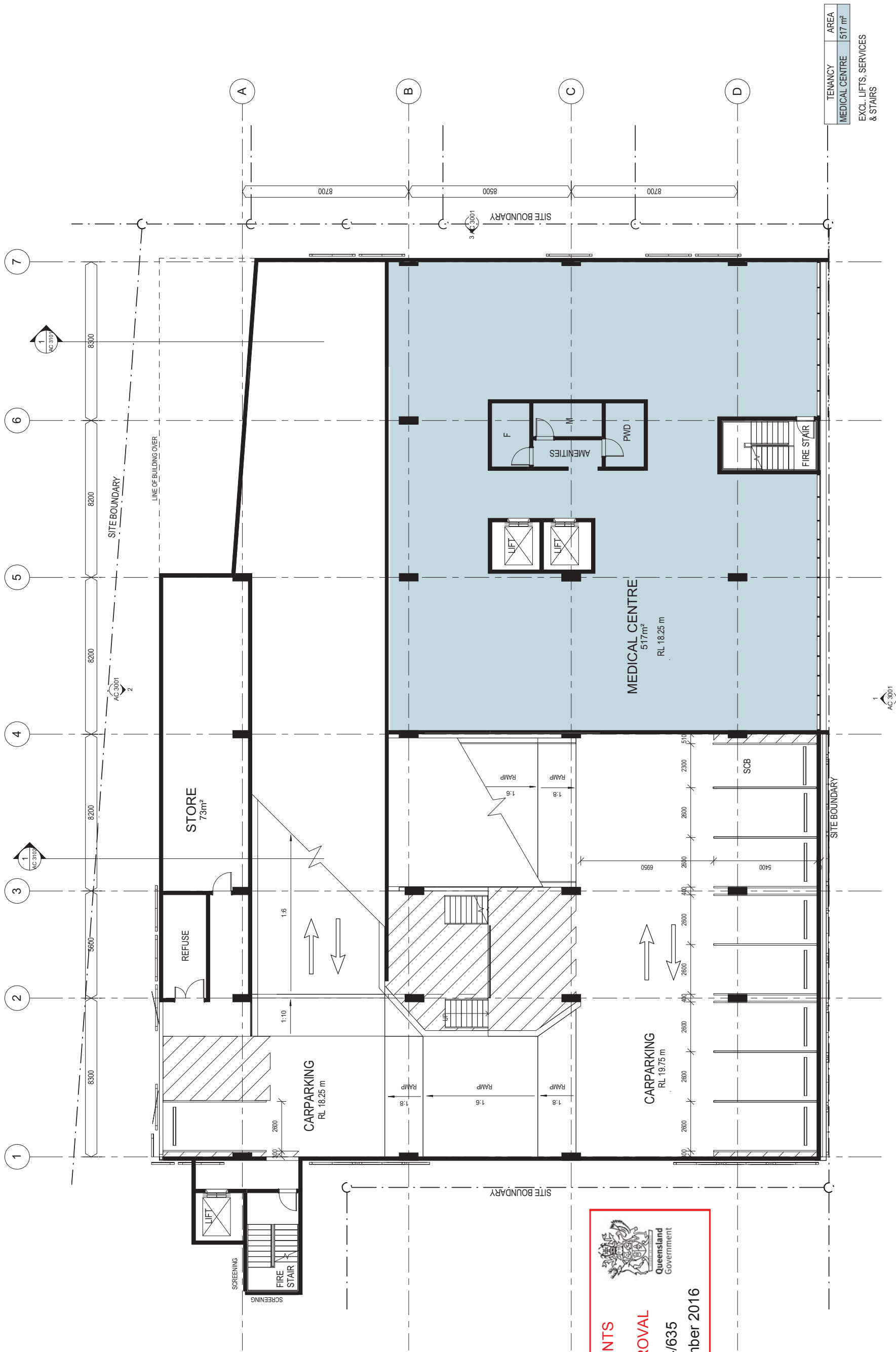
PROPOSED FIRST FLOOR

1 : 100 @ A1

21-07-2016

AC 2002

rev. D



TENANCY	AREA
MEDICAL CENTRE	517 m ²

EXCL. LIFTS, SERVICES & STAIRS


PLANS AND DOCUMENTS
 referred to in the PDA
DEVELOPMENT APPROVAL
 Approval no: DEV2014/635
 Date: 23 December 2016



WREN STREET CAR PARK
PROPOSED CAR PARK

© Copyright Thomson Adsett Pty Ltd.
 ABN 76 105 314 654
 Trading as ThomsonAdsett.

Telephone +61 7 3840 9999
 bne@thomsonadsett.com
 128 Robertson Street
 Fortitude Valley
 Qld 4006 Australia
 thomsonadsett.com



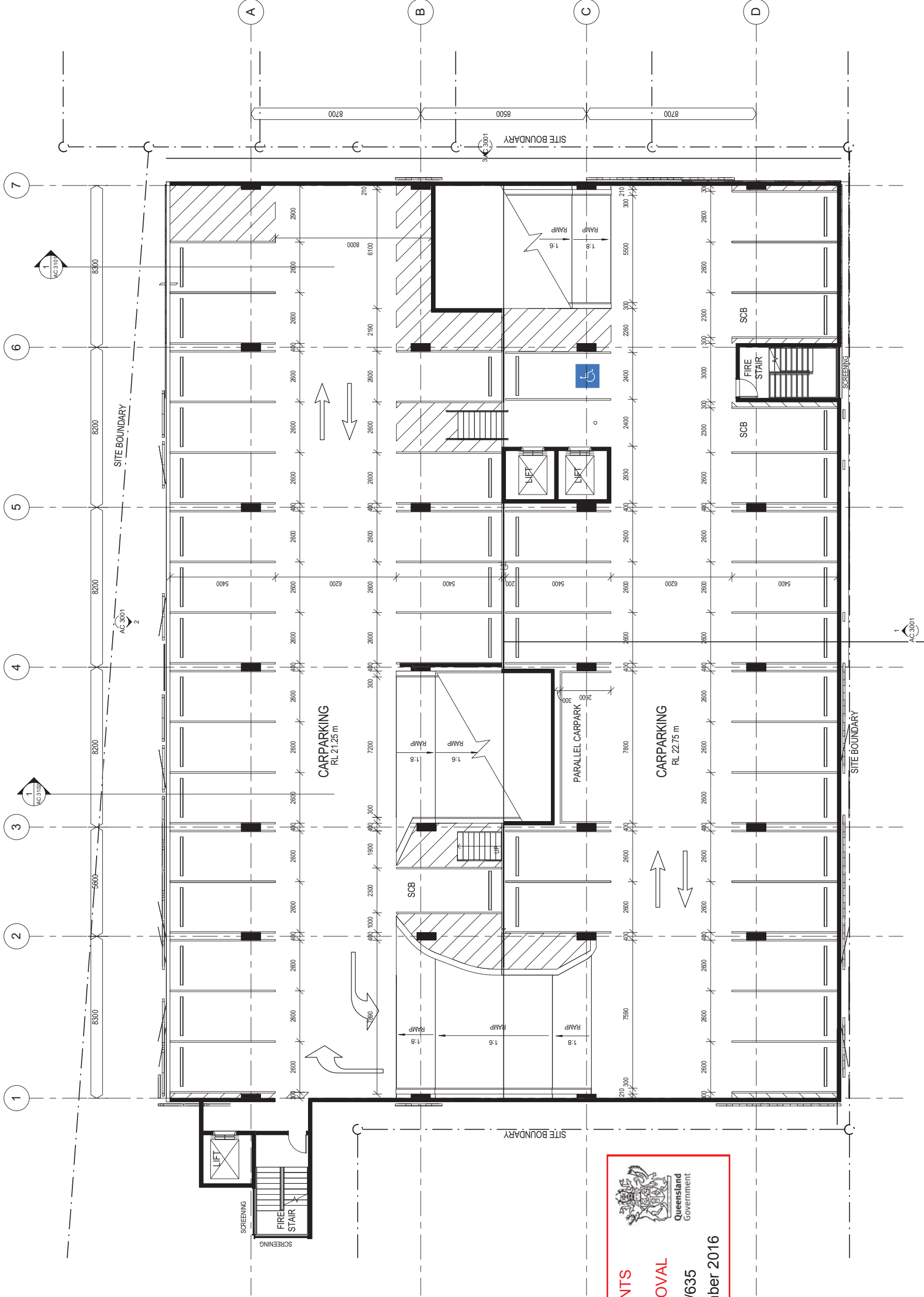
PROPOSED SECOND LEVEL

1 : 100 @ A1

29-08-2016

AC 2003

rev. E




PLANS AND DOCUMENTS
 referred to in the PDA
DEVELOPMENT APPROVAL
 Approval no: DEV2014/635
 Date: 23 December 2016



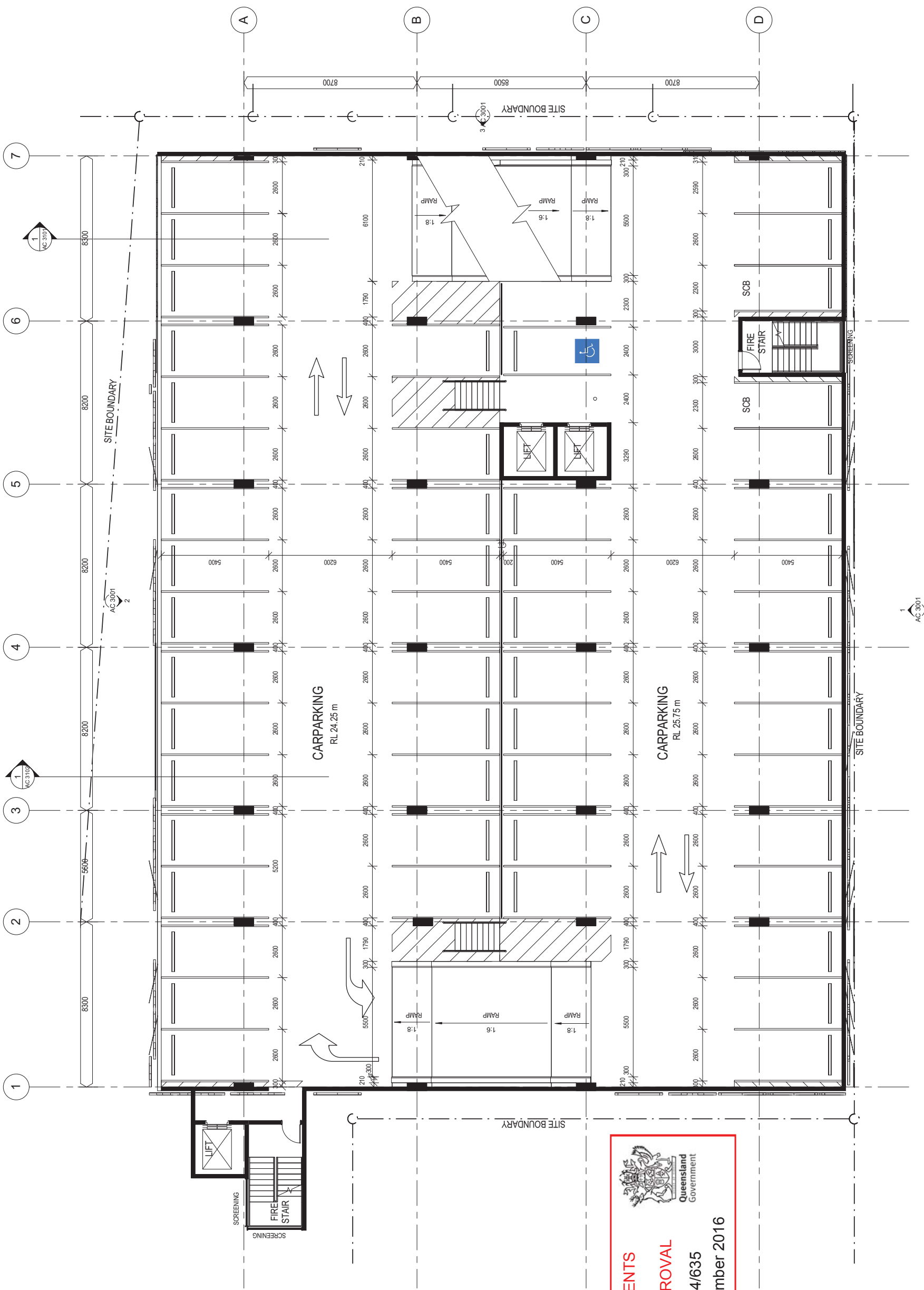
WREN STREET CAR PARK
 PROPOSED CAR PARK

© Copyright Thomson Adsett Pty Ltd.
 ABN 76 105 314 634
 Trading as ThomsonAdsett.

Telephone +61 7 3840 9999
 bne@thomsonadsett.com
 128 Robertson Street
 Fortitude Valley
 Qld 4006 Australia
 thomsonadsett.com



PROPOSED CARPARK LEVEL 3
 1 : 100 @ A1
 AC 2004
 rev. E
 28-07-2016




PLANS AND DOCUMENTS
 referred to in the PDA
DEVELOPMENT APPROVAL
 Approval no: DEV2014/635
 Date: 23 December 2016

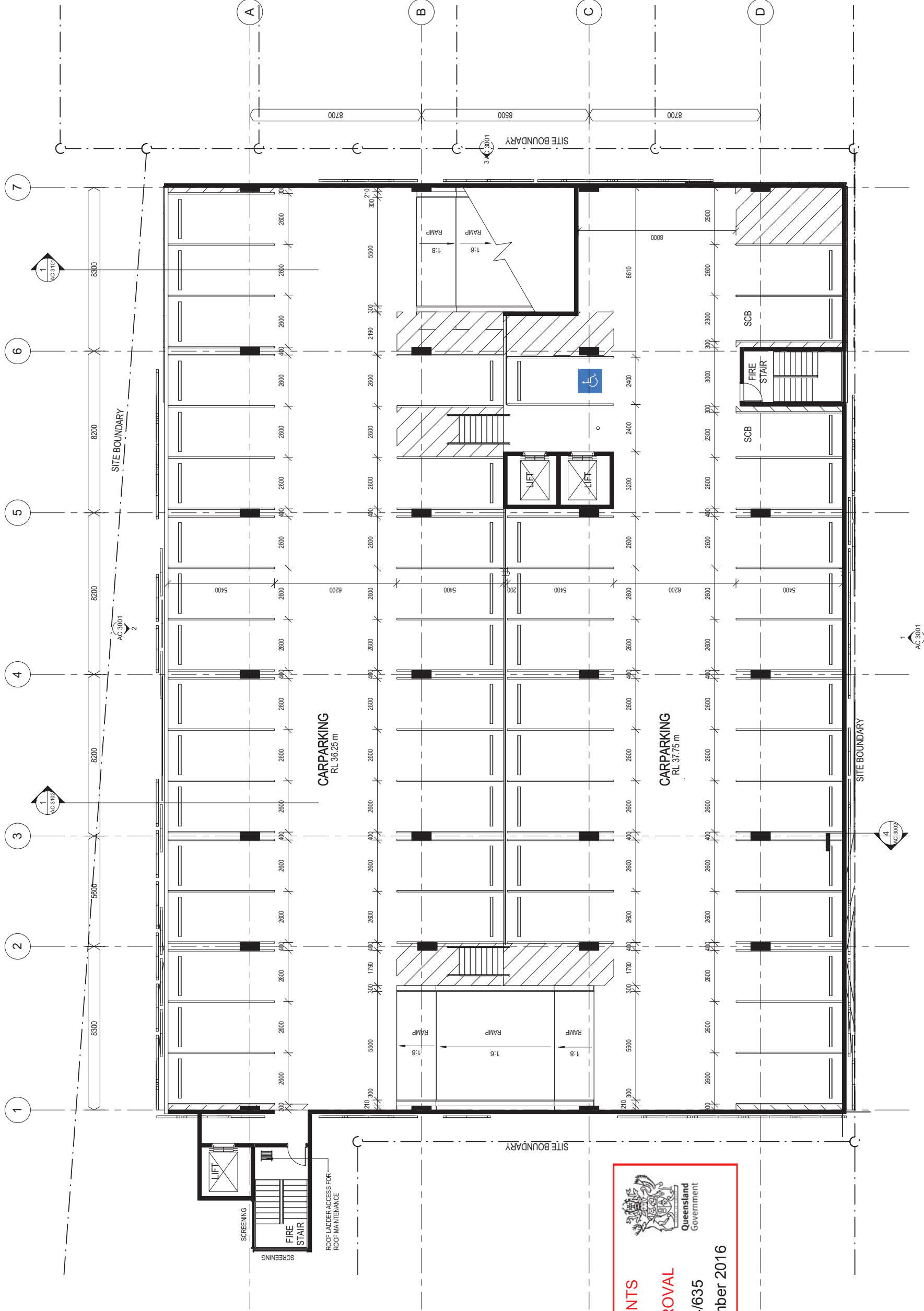


WREN STREET CAR PARK
 PROPOSED CAR PARK

© Copyright Thomson Adsett Pty Ltd.
 ABN 76 105 314 654
 Trading as ThomsonAdsett.

Telephone +61 7 3840 9999
 bne@thomsonadsett.com
 128 Robertson Street
 Fortitude Valley
 Qld 4006 Australia
 thomsonadsett.com







PLANS AND DOCUMENTS
 referred to in the PDA
DEVELOPMENT APPROVAL
 Approval no: DEV2014/635
 Date: 23 December 2016

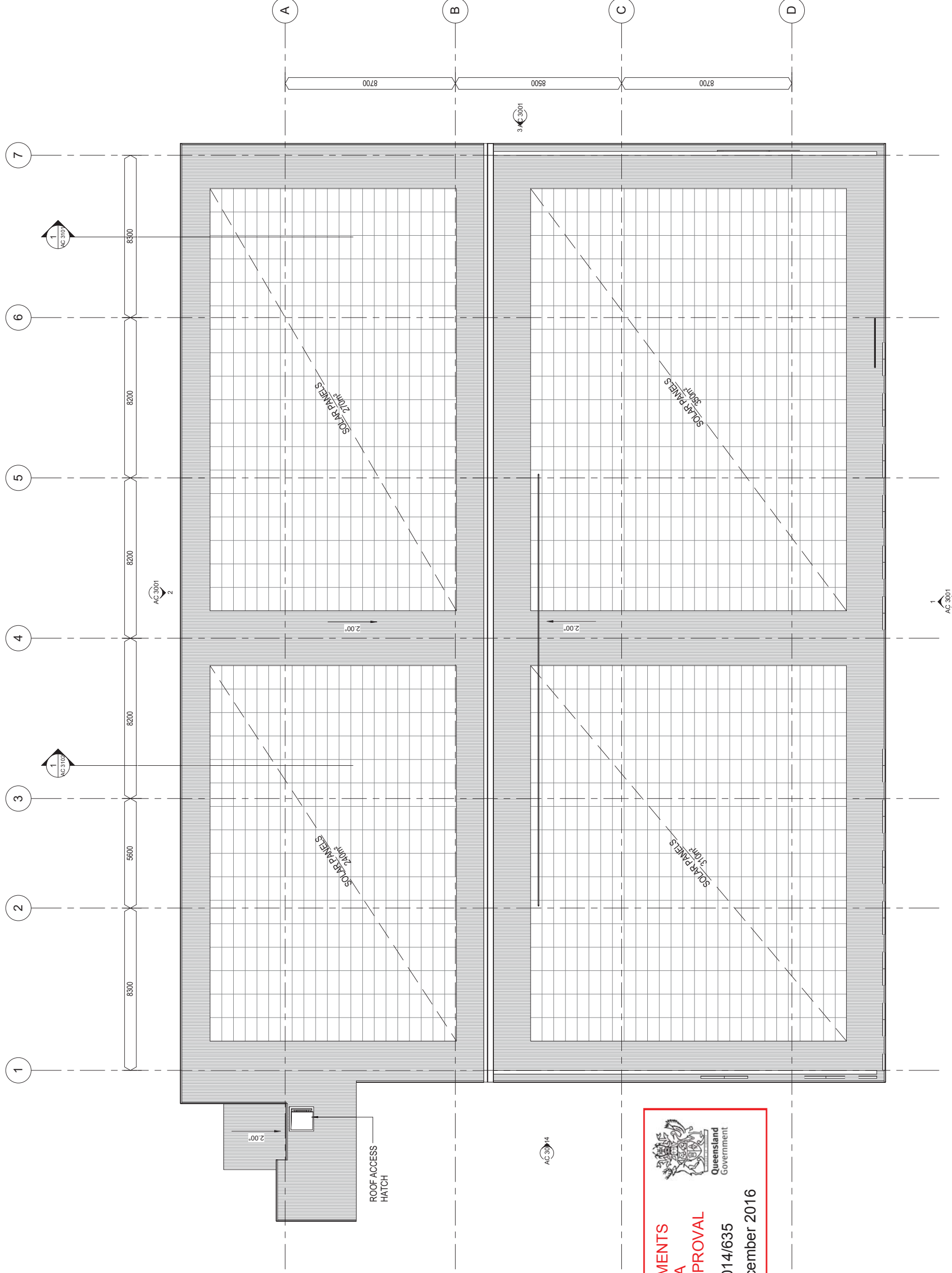


WREN STREET CAR PARK
 PROPOSED CAR PARK

© Copyright Thomson Adsett Pty Ltd.
 ABN 76 105 314 634
 Trading as ThomsonAdsett.

Telephone +61 7 3840 9999
 bne@thomsonadsett.com
 128 Robertson Street
 Fortitude Valley
 Qld 4006 Australia
 thomsonadsett.com






PLANS AND DOCUMENTS
 referred to in the PDA
DEVELOPMENT APPROVAL
 Approval no: DEV2014/635
 Date: 23 December 2016



WREN STREET CAR PARK
 PROPOSED CAR PARK

© Copyright Thomson Adsett Pty Ltd.
 ABN 76 105 314 654
 Trading as ThomsonAdsett.

Telephone +61 7 3840 9999
 bne@thomsonadsett.com
 128 Robertson Street
 Fortitude Valley
 Qld 4006 Australia
 thomsonadsett.com



ROOF PLAN

1 : 100 @ A1

AC 2007

01-06-2016

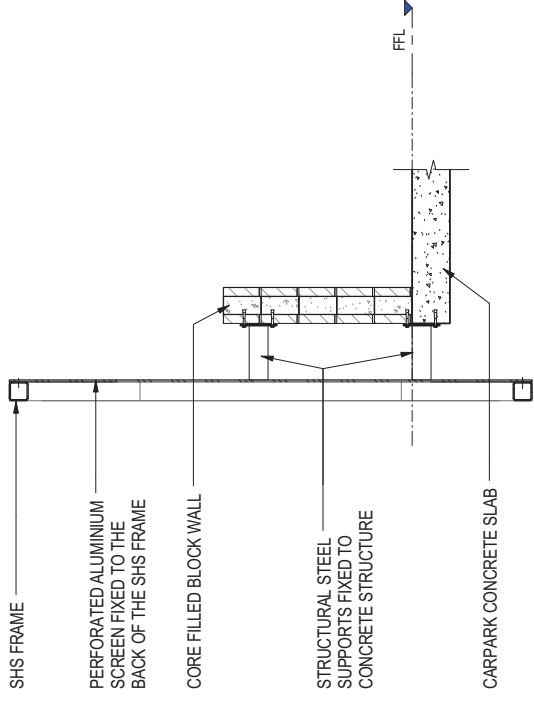
rev. A



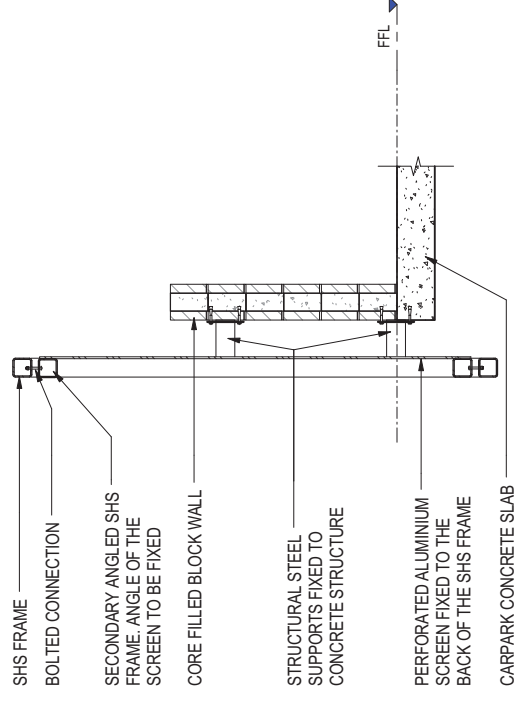
1 FACADE MODULE - TYPE 1



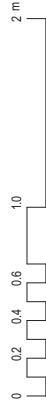
3 FACADE MODULE - TYPE 2



2 FACADE DETAIL - TYPE 1
AC 3102 1:20



4 FACADE DETAIL - TYPE 2
AC 2009 1:20



WREN STREET CAR PARK
PROPOSED CAR PARK

© Copyright Thomson Adsett Pty Ltd.
ABN 76 105 314 654
Trading as ThomsonAdsett.

Telephone +61 7 3840 9999
bne@thomsonadsett.com
128 Robertson Street
Fortitude Valley
Qld 4006 Australia
thomsonadsett.com

thomson
adsett

FACADE DETAIL

1:20 @ A1

AC 3002

rev. A

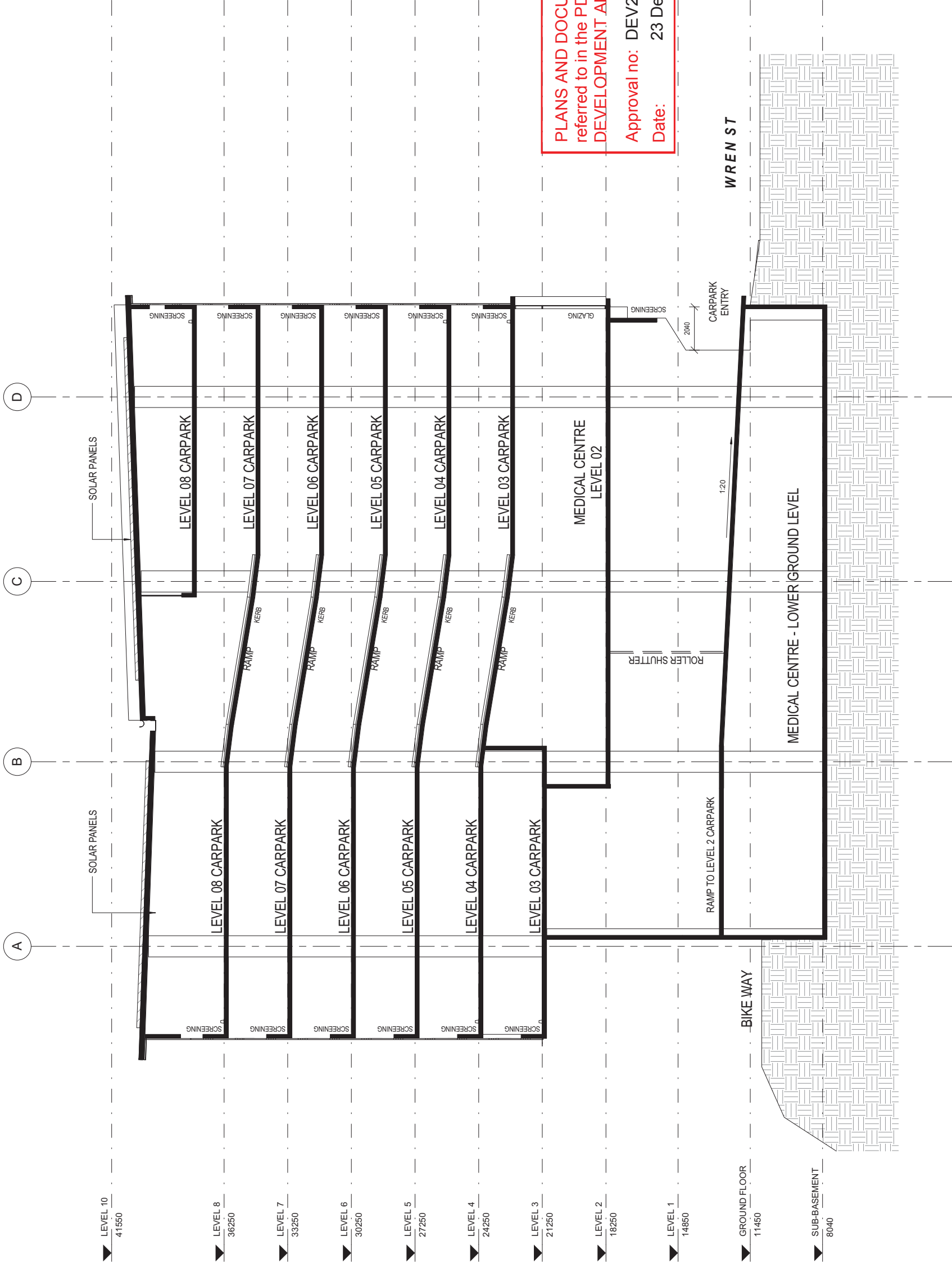
05-10-2016



PLANS AND DOCUMENTS
referred to in the PDA
DEVELOPMENT APPROVAL

Approval no: DEV2014/635

Date: 23 December 2016



PLANS AND DOCUMENTS
referred to in the PDA
DEVELOPMENT APPROVAL

Approval no: DEV2014/635

Date: 23 December 2016



WREN STREET CAR PARK
PROPOSED CAR PARK

© Copyright Thomson Adsett Pty Ltd.
ABN 76 105 514 654
Trading as ThomsonAdsett.

Telephone +61 7 3840 9999
bne@thomsonadsett.com
128 Robertson Street
Fortitude Valley
Qld 4006 Australia
thomsonadsett.com



SECTION

1 : 100 @ A1

AC 3101

21-07-2016

rev. C



WREN STREET CAR PARK
PROPOSED CAR PARK

© Copyright Thomson Adsett Pty Ltd.
ABN 76 105 314 634
Trading as ThomsonAdsett.

Telephone +61 7 3840 9999
bne@thomsonadsett.com
128 Robertson Street
Fortitude Valley
Qld 4006 Australia
thomsonadsett.com

**thomson
adsett**

SECTION

1 : 100 @ A1

AC 3102

21-07-2016

rev. C


PLANS AND DOCUMENTS
 referred to in the PDA
DEVELOPMENT APPROVAL
 Approval no: DEV2014/635
 Date: 23 December 2016

